

# Enterprise2014

## zAD21 CICS Transaction Server for VSE - Update

© Copyright IBM Corporation 2014

Technical University/Symposia materials may not be reproduced  
in whole or in part without the prior written permission of IBM.



# Trademarks

**The following are trademarks of the International Business Machines Corporation in the United States, other countries, or both.**

Not all common law marks used by IBM are listed on this page. Failure of a mark to appear does not mean that IBM does not use the mark nor does it mean that the product is not actively marketed or is not significant within its relevant market.

Those trademarks followed by ® are registered trademarks of IBM in the United States; all others are trademarks or common law marks of IBM in the United States.

For a complete list of IBM Trademarks, see [www.ibm.com/legal/copytrade.shtml](http://www.ibm.com/legal/copytrade.shtml):

\*, AS/400®, e business(logo)®, DBE, ESCO, eServer, FICON, IBM®, IBM (logo)®, iSeries®, MVS, OS/390®, pSeries®, RS/6000®, S/30, VM/ESA®, VSE/ESA, WebSphere®, xSeries®, z/OS®, zSeries®, z/VM®, System i, System i5, System p, System p5, System x, System z, System z9®, BladeCenter®

**The following are trademarks or registered trademarks of other companies.**

Adobe, the Adobe logo, PostScript, and the PostScript logo are either registered trademarks or trademarks of Adobe Systems Incorporated in the United States, and/or other countries.

Cell Broadband Engine is a trademark of Sony Computer Entertainment, Inc. in the United States, other countries, or both and is used under license therefrom.

Java and all Java-based trademarks are trademarks of Sun Microsystems, Inc. in the United States, other countries, or both.

Microsoft, Windows, Windows NT, and the Windows logo are trademarks of Microsoft Corporation in the United States, other countries, or both.

Intel, Intel logo, Intel Inside, Intel Inside logo, Intel Centrino, Intel Centrino logo, Celeron, Intel Xeon, Intel SpeedStep, Itanium, and Pentium are trademarks or registered trademarks of Intel Corporation or its subsidiaries in the United States and other countries.

UNIX is a registered trademark of The Open Group in the United States and other countries.

Linux is a registered trademark of Linus Torvalds in the United States, other countries, or both.

ITIL is a registered trademark, and a registered community trademark of the Office of Government Commerce, and is registered in the U.S. Patent and Trademark Office.

IT Infrastructure Library is a registered trademark of the Central Computer and Telecommunications Agency, which is now part of the Office of Government Commerce.

\* All other products may be trademarks or registered trademarks of their respective companies.

## Notes:

Performance is in Internal Throughput Rate (ITR) ratio based on measurements and projections using standard IBM benchmarks in a controlled environment. The actual throughput that any user will experience will vary depending upon considerations such as the amount of multiprogramming in the user's job stream, the I/O configuration, the storage configuration, and the workload processed. Therefore, no assurance can be given that an individual user will achieve throughput improvements equivalent to the performance ratios stated here.

IBM hardware products are manufactured from new parts, or new and serviceable used parts. Regardless, our warranty terms apply.

All customer examples cited or described in this presentation are presented as illustrations of the manner in which some customers have used IBM products and the results they may have achieved. Actual environmental costs and performance characteristics will vary depending on individual customer configurations and conditions.

This publication was produced in the United States. IBM may not offer the products, services or features discussed in this document in other countries, and the information may be subject to change without notice. Consult your local IBM business contact for information on the product or services available in your area.

All statements regarding IBM's future direction and intent are subject to change or withdrawal without notice, and represent goals and objectives only.

Information about non-IBM products is obtained from the manufacturers of those products or their published announcements. IBM has not tested those products and cannot confirm the performance, compatibility, or any other claims related to non-IBM products. Questions on the capabilities of non-IBM products should be addressed to the suppliers of those products.

Prices subject to change without notice. Contact your IBM representative or Business Partner for the most current pricing in your geography.

## Notice Regarding Specialty Engines (e.g., zIIPs, zAAPs and IFLs):

- Any information contained in this document regarding Specialty Engines ("SEs") and SE eligible workloads provides only general descriptions of the types and portions of workloads that are eligible for execution on Specialty Engines (e.g., zIIPs, zAAPs, and IFLs). IBM authorizes customers to use IBM SE only to execute the processing of Eligible Workloads of specific Programs expressly authorized by IBM as specified in the "Authorized Use Table for IBM Machines" provided at [http://www.ibm.com/systems/support/machine\\_warranties/machine\\_code/aut.html](http://www.ibm.com/systems/support/machine_warranties/machine_code/aut.html) ("AUT").
- No other workload processing is authorized for execution on an SE.
- IBM offers SEs at a lower price than General Processors/Central Processors because customers are authorized to use SEs only to process certain types and/or amounts of workloads as specified by IBM in the AUT.

## CICS TS for VSE History

- CICS TS for VSE/ESA 1.1.0 - released June 1999
  - VSE ported up to 100 OS/390 services
  - New CICS TS port from OS/390
  - Released with VSE/ESA 2.4
  
- Next major CICS TS update - September 2000
  - CICS TS for VSE/ESA 1.1.1
  - Provides CICS Web Support (CWS), 3270 Bridge, REXX for CICS, Subsystem Storage Protection (SSP), ...
  - Released with VSE/ESA 2.5
  
- CICS Explorer monitoring support - released June 2012
  
- Thanks to WAVV, GSE, zUniversity and customer requirements

We now have a Statement of Direction for a new CICS TS release !

## z/VSE Statement of Direction (SOD) in z/VSE 5.2 Announcement

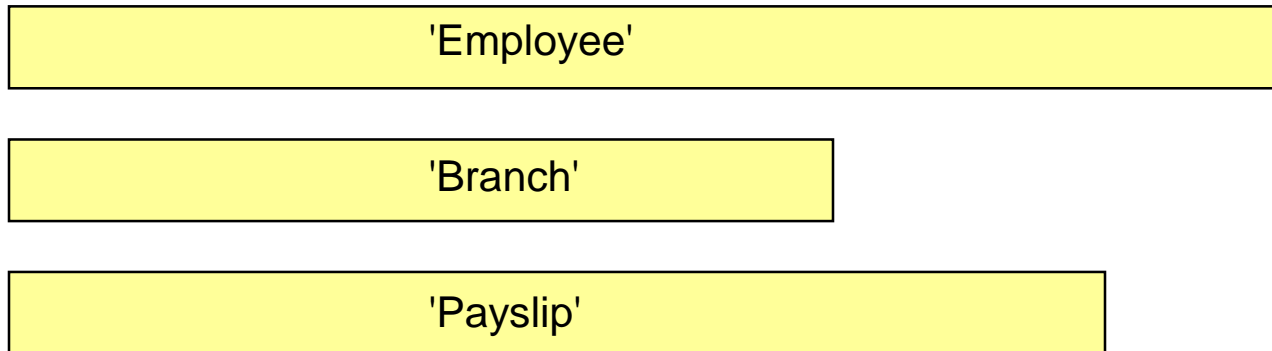
- IBM intends to provide  
  
new capability in a future release of IBM CICS Transaction Server for z/VSE, to provide:
  - (i) Updates to CICS resources for CICS Explorer, and
  - (ii) Channels and Containers to enable the transfer of large amounts of data between CICS applications.
  
- IBM intends to rename  
  
the product z/VSE Central Functions to z/VSE in a new z/VSE version.
  
- z/VSE V5.2 will be the last release that supports IBM System z9. Future releases of z/VSE will support IBM System z10 and higher.
  
- Stabilization of support and discontinued functions:
  - CICS DDM: Support for CICS Distributed Data Management (DDM) is stabilized in CICS TS for VSE/ESA V1.1.1.  
In a future release of CICS TS for z/VSE, IBM intends to discontinue support for CICS DDM.

All statements regarding IBM's plans, directions, and intent are subject to change or withdrawal without notice.

## Channels and Containers (Statement of Direction)

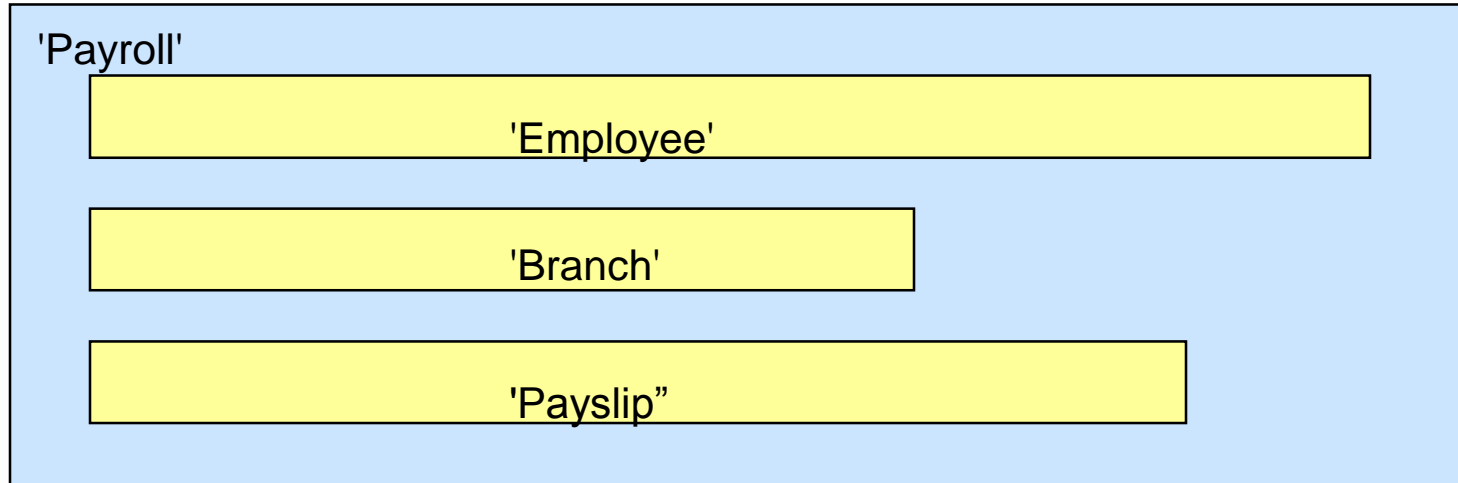
- Requirements
  - Lift 32 KB data limit (RFE 28905 / 29432 / 29422, MR1115112844, MR1114113031)
  - CICS Temporary Storage Upgrade (32K Limitation - RFE 28892, WAVV200826, MR1024084142)
  - Support for channels and containers (RFE 28883, WAVV200614, MR0526066847)
- **Channels and containers** lift the 32K Commarea limitation
  - Applicable for both LINK and XCTL, Distributed Program Link (DPL)
  - Affects the exchange of data between CICS tasks
  - Local and transaction routing
  - START with data
- z/VSE will port channel and container APIs based on CICS TS for z/OS 3.1
- Delivered as part of a new CICS TS for z/VSE release.
- Channels and Containers limitations
  - In 31 bit virtual storage only
  - No support for
    - External CICS Interface (EXCI)
    - External Call Interface (ECI)
    - CICS Web Support (CWS)
    - Business Transaction Services (BTS)
- The following charts are derived from Colin Penfold's (CICS TS for z/OS development) presentation.

## The Solution... Containers



- To solve the 32K Commarea problem a new construct will be provided
- Named block of data designed for passing information between programs
  - Like named COMMAREAs
- CONTAINER API
  - Created using (EXEC CICS) PUT CONTAINER, defines the size of the container
  - Read using (EXEC CICS) GET CONTAINER
  - Delete using (EXEC CICS) DELETE CONTAINER, to free storage, if no longer required
- No CICS enforced size limitation
  - Containers are stored within the CICS EDSA (31 bit partition virtual storage)

## The Solution... Channels



- A group of Containers
  - No limit on the number of Containers in a Channel
- A Channel is a sort of program interface
  - Passed on LINK, XCTL, pseudoconversational RETURN, and START commands
- Non-persistent
  - Non-recoverable resource similar to commareas



## A Simple Example

### PROGA

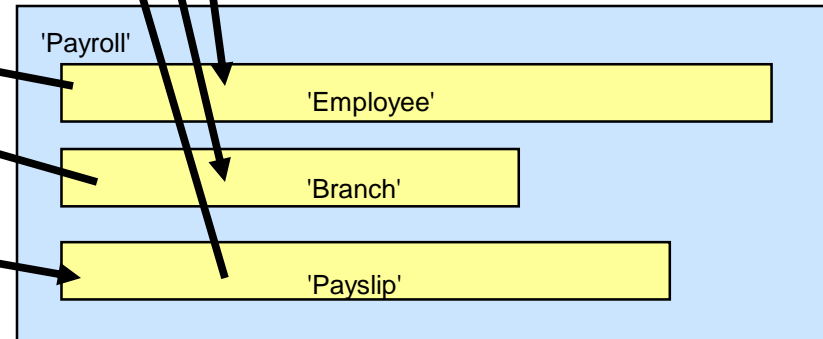
```
PUT CONTAINER('Employee') CHANNEL('Payroll') FROM(emp-data)
PUT CONTAINER('Branch') CHANNEL('Payroll') FROM(branch-data)

LINK PROGRAM('PROGB') CHANNEL('Payroll')

GET CONTAINER('Payslip') CHANNEL('Payroll') INTO(pay-data)
```

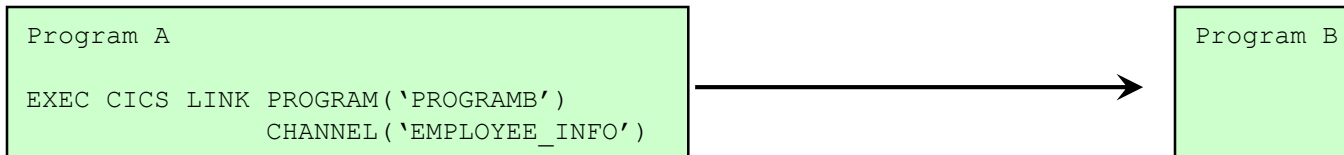
### PROGB

```
GET CONTAINER('Employee') INTO(emp-data)
GET CONTAINER('Branch') INTO(branch-data)
...
PUT CONTAINER('Payslip') FROM(pay-data)
```

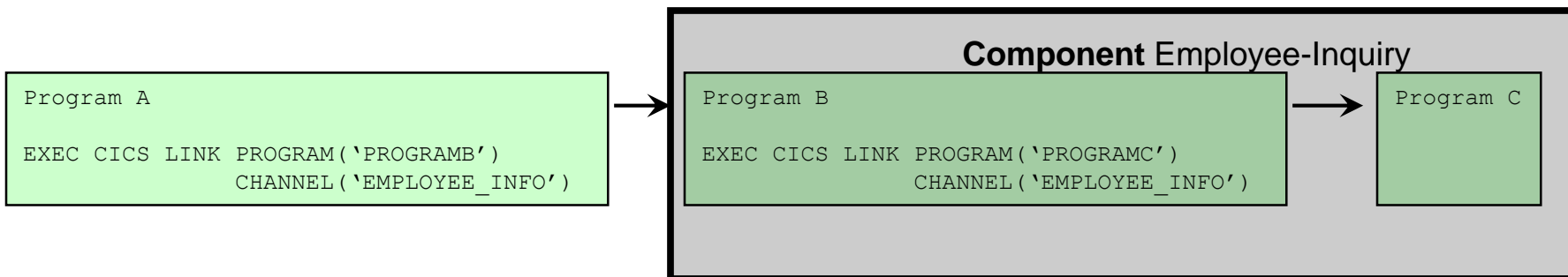


## Basic Scenarios for using Channels

- One Channel / One Program

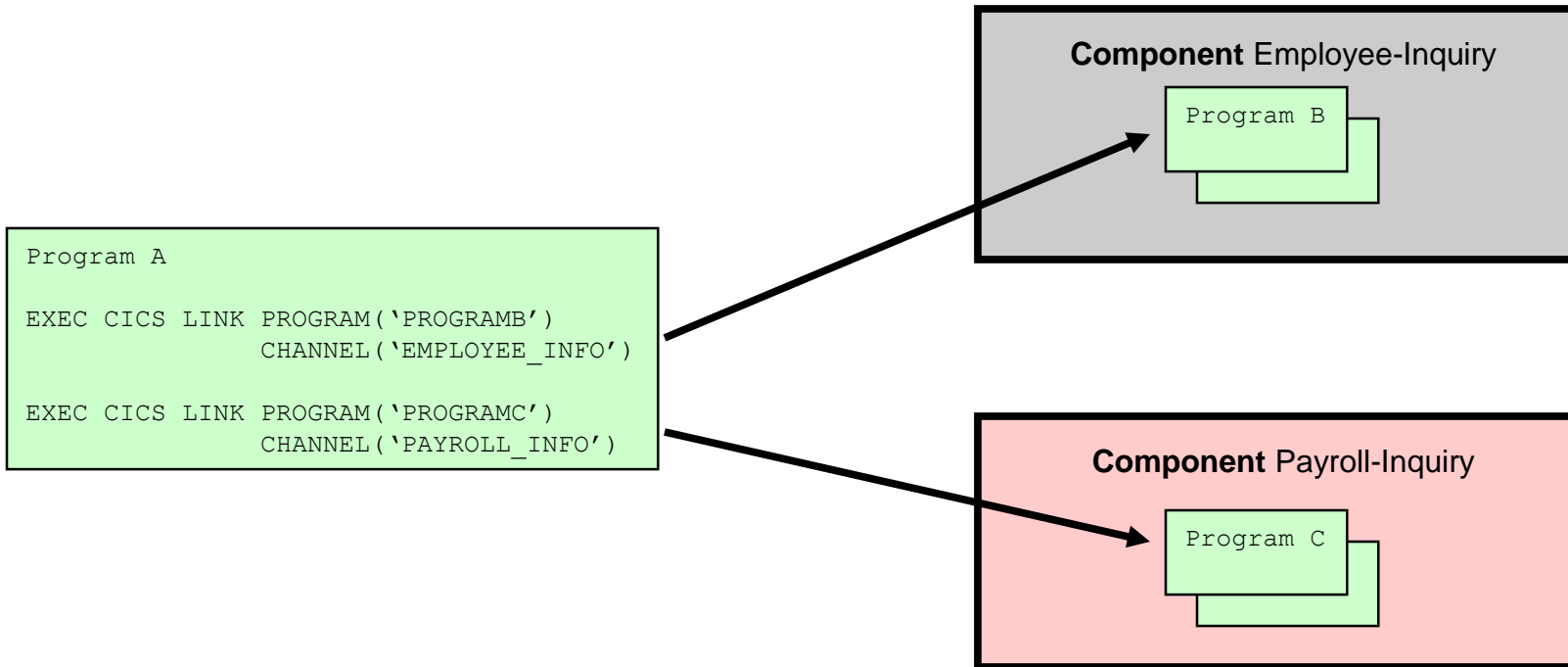


- One Channel / Multiple Programs
  - The Channel is the interface to a Component



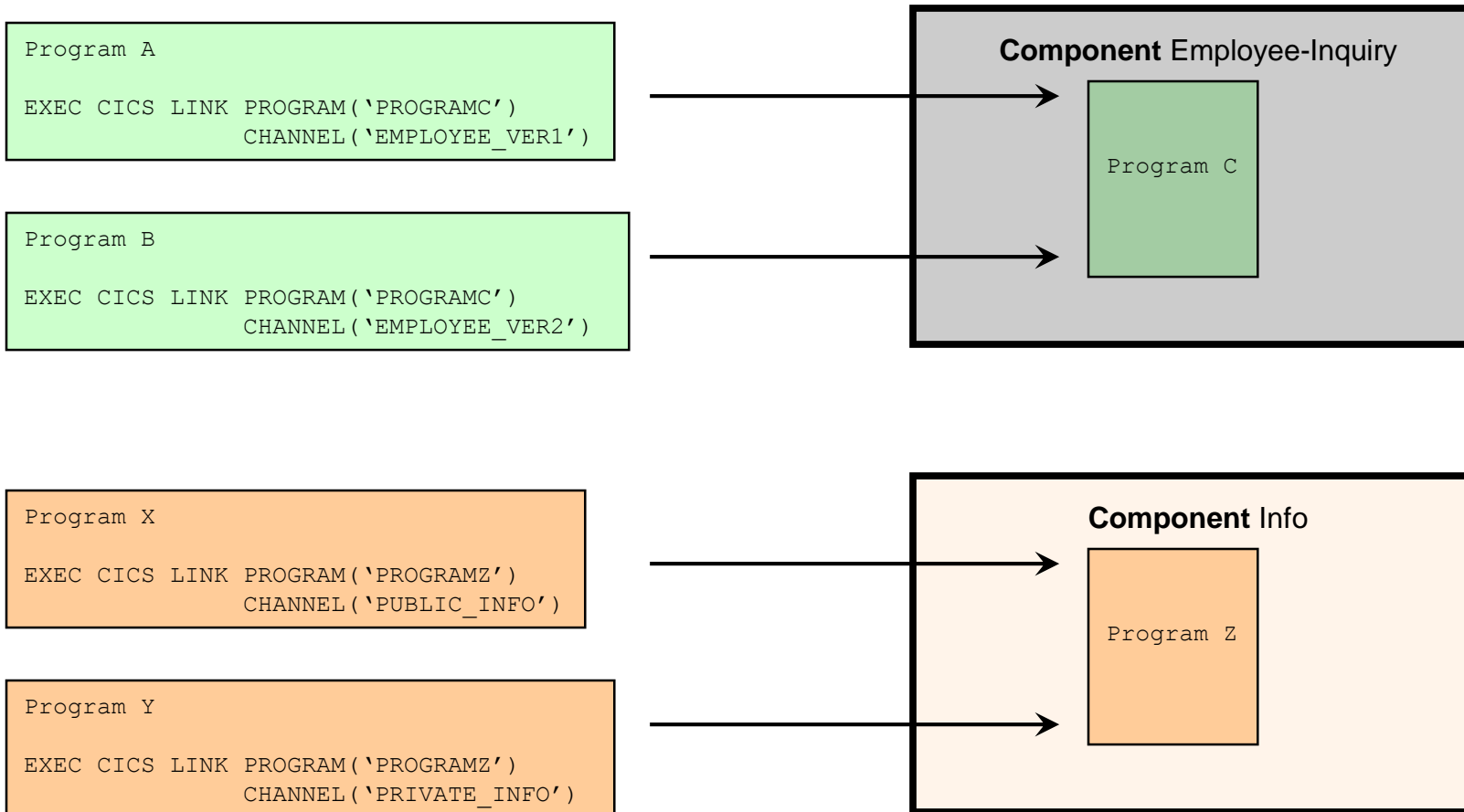
## Scenario - Multiple Components

- One Program / Multiple Channels



## Scenario - Loose Binding

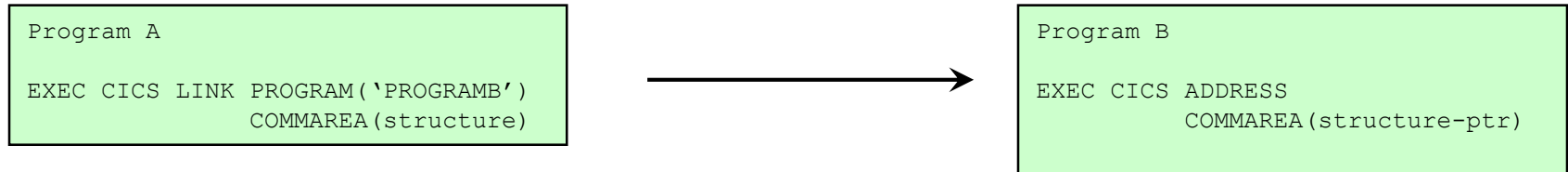
- Multiple Programs / Multiple Channels



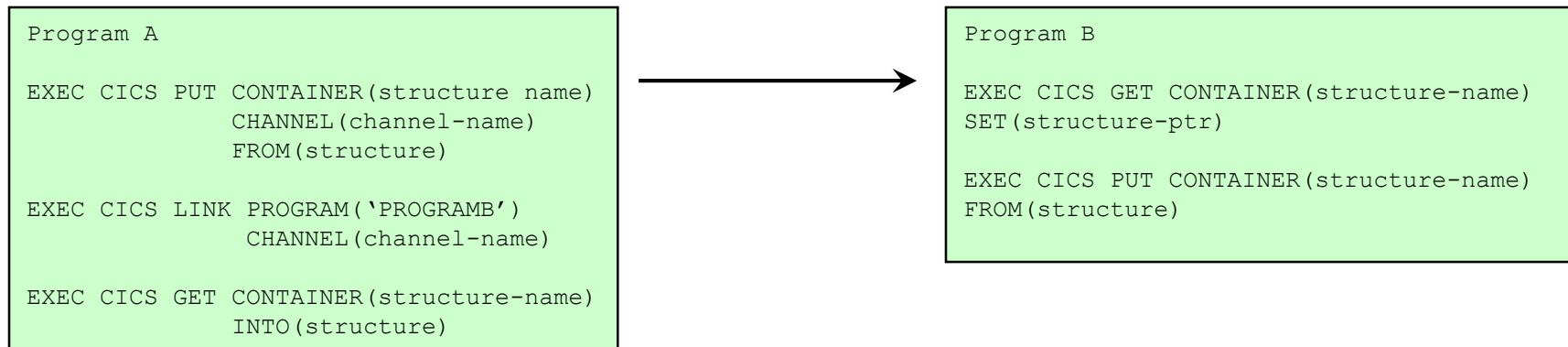
Note that CICS does not define any security mechanism to enforce who can use a Channel name.

## Migration of Programs Using LINK

- Existing application with COMMAREA



- Changed application using Channels



Note that, if Program B changes the Container data, it must PUT the Container back before returning, or the changes will not be visible to the caller.

# Migration of Programs Using START

- Existing application with START data

```
Transaction 1  
EXEC CICS START TRANSID('TRN2')  
FROM(structure)
```



```
Transaction 2  
EXEC CICS RETRIEVE  
INTO(structure)
```

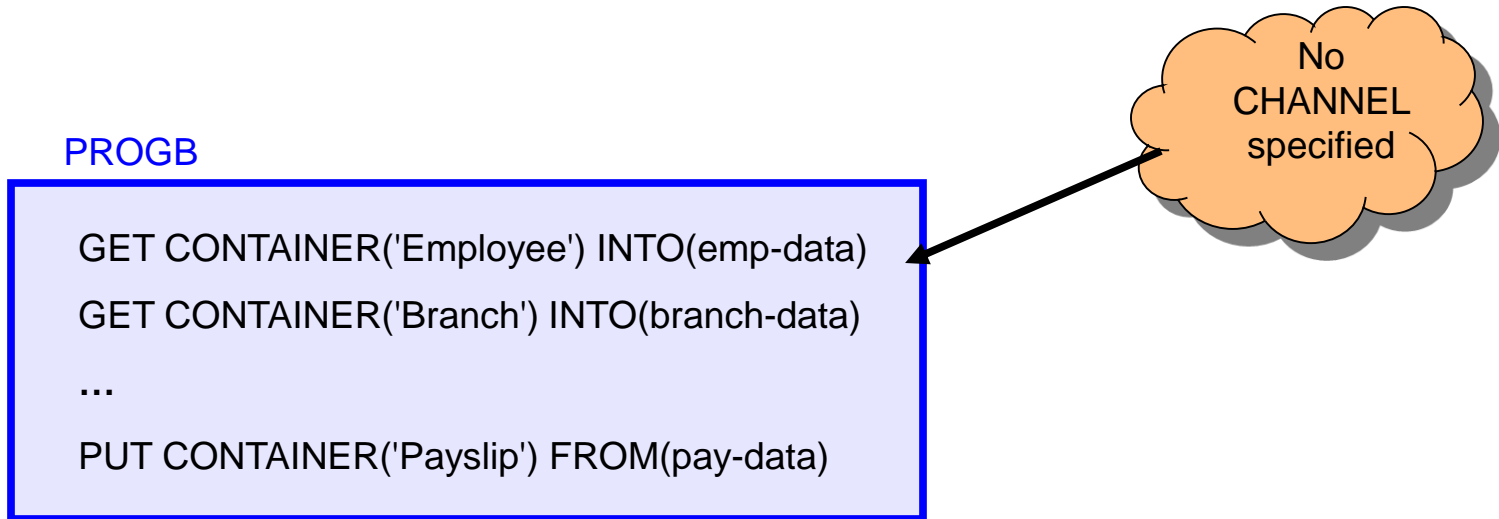
- Changed application using Channels

```
Transaction 1  
EXEC CICS PUT CONTAINER(structure-name)  
CHANNEL(channel-name)  
FROM(structure)  
  
EXEC CICS START TRANSID('TRN2')  
CHANNEL(channel-name)
```



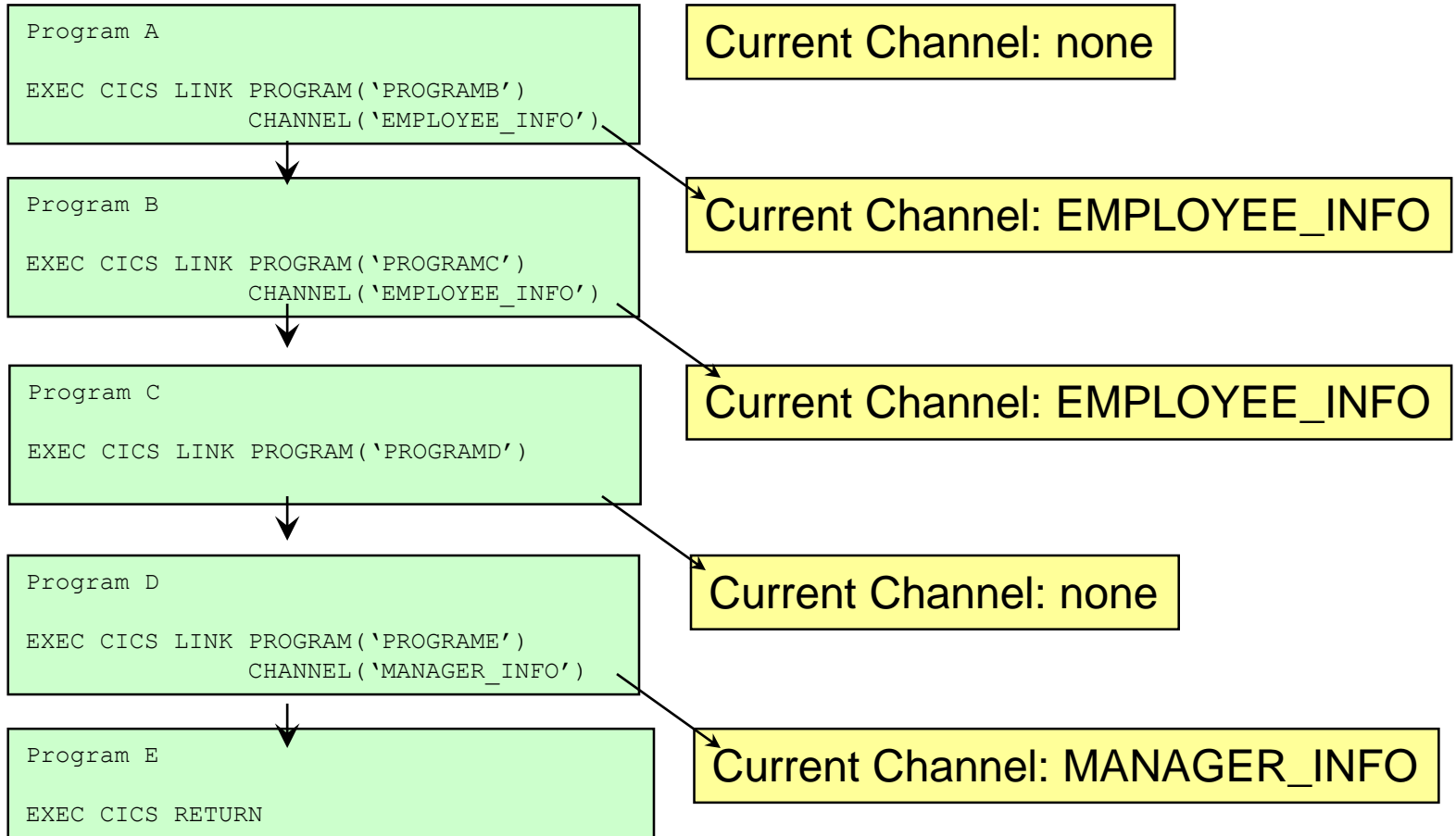
```
Transaction 2  
EXEC CICS GET CONTAINER(structure-name)  
INTO(structure)
```

# The Current Channel



- The Channel, if any, passed to the program by:
  - LINK, XCTL, START or pseudo-conversation RETURN
- Does not change during the life of the program
  - The program may create other Channels
- Default for EXEC CICS commands that do not explicitly specify a Channel name

# Current Channel

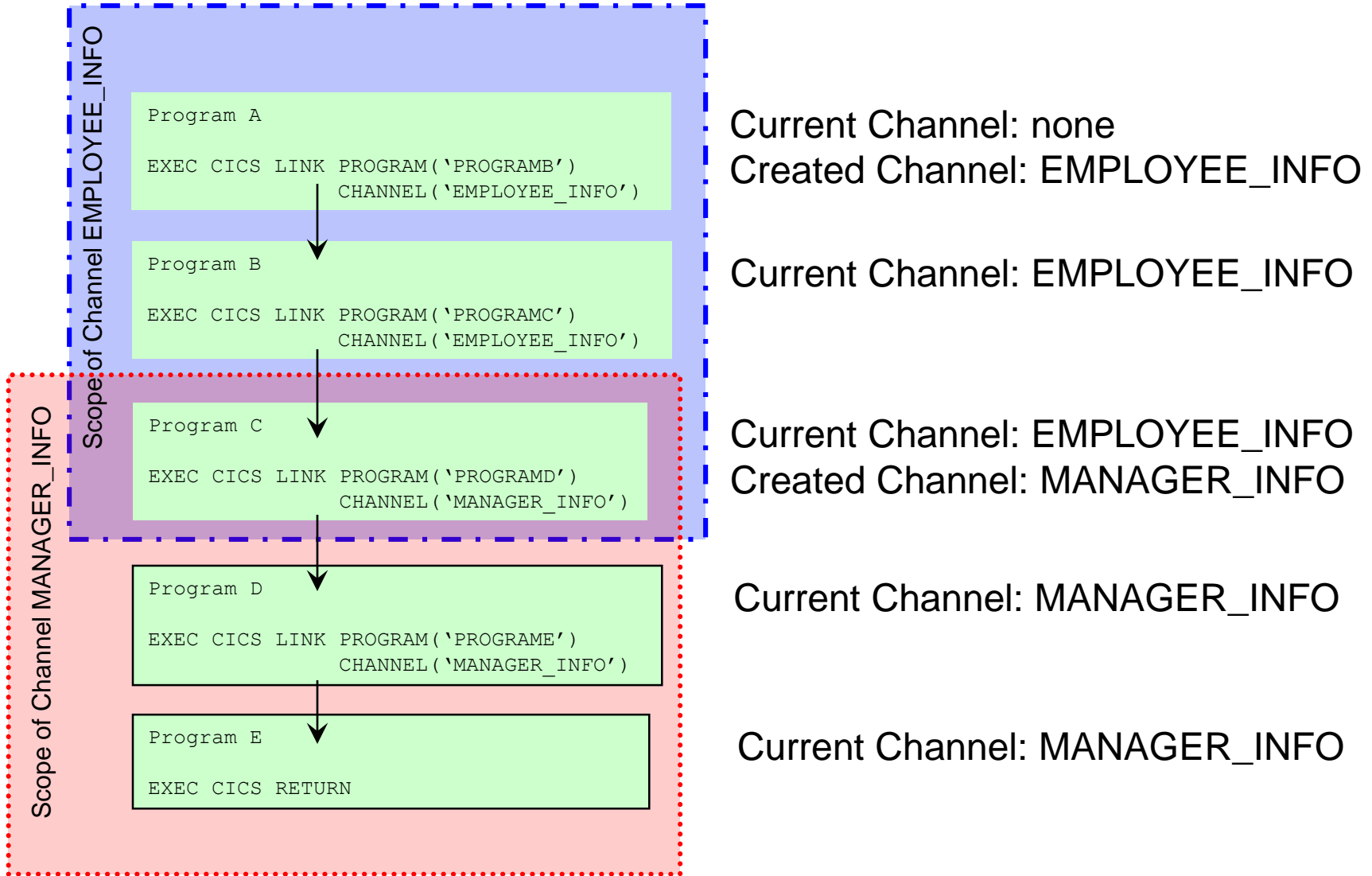




## The Scope of a Channel

- A program can access
  - Its Current Channel
  - Any other Channels it creates
  
- When no program in the link stack can access a Channel it is deleted
  - Can occur on RETURN or XCTL
  
- Channels cannot be accessed by other tasks

# Channel Scope



## API Commands

- Container commands
  - PUT CONTAINER
  - GET CONTAINER
  - MOVE CONTAINER
  - DELETE CONTAINER
  
- Program transfer commands
  - LINK PROGRAM
  - XCTL PROGRAM
  
- Inquiry commands
  - ASSIGN CHANNEL
  - STARTBROWSE CONTAINER
  - GETNEXT CONTAINER
  - ENDBROWSE CONTAINER
  
- Transaction transfer commands
  - RETURN TRANSID
  - START TRANSID

## Container Commands

- EXEC CICS PUT CONTAINER
  - Copies data into a container within the channel
  - Overwrites existing data if container already exists
  - Creates channel if it does not already exist
  
- EXEC CICS GET CONTAINER
  - Retrieve the container data into user storage
  
- EXEC CICS MOVE CONTAINER
  - Moves a container from one channel to another
  - Can be used to rename a container
  
- EXEC CICS DELETE CONTAINER
  - Deletes a container from the channel
  - Does not delete the channel, even if no containers left

# EXEC CICS PUT CONTAINER

- CONTAINER (data-value)
  - The name (1-16 characters) of the container
  
- CHANNEL (data-value)
  - The name (1-16 characters) of the channel that owns the container.
  - Defaults to current channel.
  
- FROM (data-area)
  - Specifies the data area from where the data to be saved is read.
  
- FLENGTH (data-value)
  - Specifies the length of the data area to be saved.
  - Can be 0 to very large.
  - This parameter is added by the translator if not specified (except C).
  
- FROMCCSID (data-value)
  - Specifies the current Coded Character Set of the character data to be put into the container. Defaults to the CCSID of the local CICS region.
  
- DATATYPE (CVDA)
  - BIT - The data in the container cannot be converted.
  - CHAR - Character data which can be converted.

# EXEC CICS GET CONTAINER

- CONTAINER (data-value)
  - The name (1-16 characters) of the container
- CHANNEL (data-value)
  - The name (1-16 characters) of the channel that owns the container.
  - Defaults to current channel.
- INTO (data-area)
  - Specifies the data area into which the retrieved data is to be placed.
- SET (ptr-ref)
  - Specifies a data area in which the address of the retrieved data is returned
- FLENGTH (data-area)
  - Specifies the length of the data area to be read.
  - Returns the length actually read.
- NODATA
  - Specifies the only the length of the data in the container is to be returned. The length returned will take into account the INTOCCSID.
- INTOCCSID (data-value)
  - Specifies the current Coded Character Set into which the character data is to be converted. Defaults to the CCSID of the local CICS region.

## Scenario – Simple Data Conversion

- PUT and GET can be used for data conversion
- Uses CICS or conversion tables
- Simple example of converting data to UTF-8

```
EXEC CICS PUT CONTAINER('temp') CHANNEL('dummy')  
        FROM(ebcdic-data)  
        CHAR
```

```
EXEC CICS GET CONTAINER('temp') CHANNEL('dummy')  
        SET(utf8-ptr) FLENGTH(utf8-len)  
        INTOCCSID(1208)
```

## EXEC CICS MOVE CONTAINER

- CONTAINER (data-value)
  - The name (1-16 characters) of the container
  
- CHANNEL (data-value)
  - The name (1-16 characters) of the channel that owns the container.
  - Defaults to current channel.
  
- TOCHANNEL (data-value)
  - Specifies the name of the channel that will own the target container
  
- AS (data-value)
  - Specifies the name of the target container



## EXEC CICS DELETE CONTAINER

- CONTAINER (data-value)
  - The name (1-16 characters) of the container
  
- CHANNEL (data-value)
  - The name (1-16 characters) of the channel that owns the container.
  - Defaults to current channel.
  
- Note: There is no command to delete a channel.  
These are deleted automatically when they go out of scope.

## Program Transfer Commands

- LINK PROGRAM [CHANNEL|COMMAREA]
  - Links to another program, on a local or remote system, passing the channel and container data
  - Creates the channel if it doesn't already exist
  
- XCTL PROGRAM [CHANNEL|COMMAREA]
  - Transfers control to the program on a local system passing the channel and container data
  - Creates the channel if it doesn't already exist

## Transaction Transfer Commands

- RETURN TRANSID [CHANNEL|COMMAREA]
  - Returns control to CICS, passing the channel and container data to the next transaction id
  - Creates the channel if it doesn't already exist
  
- START TRANSID [CHANNEL|FROM]
  - Starts a task, on a local or remote system
  - Copies the named channel and container data and passing it to the started task
  - Creates the channel if it doesn't already exist

## Inquiry commands

- ASSIGN CHANNEL(data-area)
  - Returns the name of the current channel
  - Spaces returned if no current channel
  
- Container browse commands
  - STARTBROWSE CONTAINER [CHANNEL(data-area)]
  - GETNEXT CONTAINER (data-area)
    - Container names returned in no particular order
  - ENDBROWSE CONTAINER

## Interface Changes

- Global User Exits (GLUEs)
  - Can create and pass channels and containers to programs they call
  
- Task Related User Exits (TRUEs)
  - Can create and pass channels and containers to programs they call
  
- User Replaceable Modules (URM)
  - Can create and pass channels and containers to programs they call
  - URMs may not access contents of application channels
  
- Monitoring
  - New monitoring group DFHCHNL
  - Changed monitoring group DFHPROG
  - Changed monitoring group DFHTASK
  
- Statistics
  - New fields in ISC/IRC system entry
  - New fields in Connections and Modenames

## Summary

- Channels and Containers allow more than 32k of data to be passed between CICS applications
  - Program to program
    - LINK and XCTL
  - Transaction to transaction
    - START and RETURN
  
- Allow better structuring of application data
  - Different containers to prevent overloaded copybooks
  
- Minimal application changes required for exploitation
  
- Allow for data conversion between different code pages
  
- We announced Channels & Containers (and CICS Explorer update) in a Statement of Direction. That is it is not yet available for z/VSE.

We are looking for beta customers. Please contact Ingolf Salm ([salm@de.ibm.com](mailto:salm@de.ibm.com)), if you are interested.

All statements regarding IBM's plans, directions, and intent are subject to change or withdrawal without notice.

## CICS Explorer for z/VSE

- Announced 04/03/2012, GA 06/15/2012
  
- CICS Explorer – The new face to CICS
  - System management framework for CICS TS
  - Consists of CICS Explorer client and a CICS TS server extension
  - CICS Explorer client
    - Read-only capabilities
    - Eclipse-based user interface on workstation
    - Connects to CICS TS via TCP/IP - Communication via HTTP requests
  - CICS Explorer server extension
    - Delivered as PTF for CICS TS for VSE/ESA 1.1.1
    - z/VSE V5 only
  
- **Statement of direction (SOD)**
  - IBM CICS Explorer to provide updates to CICS resources
    - Update resources as you would do with transactions on your CICS terminal
    - Enable / disable CICS resources
    - Change selected CICS definitions
    - ....

## CICS Explorer for z/VSE

- CICS Explorer client supports
  - CICS TS for z/OS
  - CICS TS for VSE/ESA 1.1.1
  
- Provides a view of some CICS system management functions
  
- Displays details of CICS resources in definition views
  
- Administration operations are not supported
  
- Displays the resource attributes as of CEMT / CEDA
  
- Provides context and more detailed help



## CICS Explorer for z/VSE – supported operations

- Regions
- TCP/IP services
- ISC/MRO connections
- Terminals
- Transactions
- Transaction classes
- Programs
- Tasks
- Files
- Interval control requests
- Transient data (TD) and temporary storage (TS) queues
- Document templates

# CICS Explorer for z/VSE on the web - [www.ibm.com/vse](http://www.ibm.com/vse)

IBM Systems > Mainframe servers > Operating systems > z/VSE >

## Products and components

**z/VSE Components** | z/VSE Products

z/VSE V5.1 | z/VSE V4.3

- General
- z/VSE Central Functions
- **CICS Transaction Server**
- z/VSE Connectors
- TCP/IP
- z/VSE VTAPE

 z/VSE is built on a heritage of ongoing refinement and innovation that spans more than four decades. It is designed to protect and leverage customer investments in z/VSE information assets. It brings the value of innovative IBM System z and IBM System Storage technology to z/VSE clients.

- ↓ CICS Transaction Server 5648-054
- ↓ CICS Explorer ←
- ↓ More Information about CICS

---

**CICS Transaction Server - 5648-054**

CICS Transaction Server 1.1.1 (5648-054) is part of VSE since VSE/ESA 2.4. CICS represents the current transaction monitor for the VSE operating system.

---

**Contact IBM**

-  [Email z/VSE](#)
- [Find a Business Partner](#)
-  [Call IBM: 1-866-883-8901](#)  
Priority code: 101AS13W

---

**Browse z/VSE**

- About z/VSE
- How to buy
- News & announcements
- Events
- Solutions
- Products & components ←
- Documentation
- Service & support
- Downloads
- Education
- Partners
- FAQ
- Contact z/VSE

# CICS Explorer for z/VSE on the web ...



---

[↑ Back to top](#)


---


## CICS Explorer

The new face of CICS Transaction Server for VSE/ESA V1.1

The CICS Explorer is the new systems management framework for CICS TS. It provides read-only capabilities to display CICS resources. The CICS Explorer consists of a CICS Explorer client and a CICS TS server extension. The CICS Explorer client can be downloaded from the [CICS Explorer web page](#), and the CICS TS server extension is delivered as CICS TS PTF. When used with CICS TS for VSE/ESA, it requires z/VSE V5.1, or later.

The CICS Explorer user guide provides some more information on the CICS Explorer installation and use.

 [IBM CICS Explorer User Guide V1.2b \(PDF, 500KB\)](#)

[→ IBM CICS Explorer download](#) 

[License Charges](#)

[→ Recommended Service Level](#)

[→ IBM Shopz](#)

---

### Middleware


[→ Rational \(software and systems delivery\)](#)

[→ Tivoli \(service management\)](#)

[→ Lotus \(collaboration\)](#)

---

### Rate zEnterprise product



**Tell us what you think**  
Your opinion matters and we want to hear from you. Write a review today!

[↑ Back to top](#)

# CICS Explorer for z/VSE on the web



Industries &amp; solutions Services Products Support &amp; downloads My IBM

IBM Software &gt; Products &gt; Application infrastructure &gt; Transaction processing &gt;

## CICS Explorer

Features

System requirements

What's new

Simplify CICS management with an integrated, single interface

### CICS Explorer Downloads

[Learn more](#)

IBM® CICS® Explorer is a system management tool that offers a simple, integrated and intuitive way of managing one or more CICS systems. It is based on the Eclipse platform and enables you to view and manage CICS Transaction Server regions and integrates CICS tools and the visibility and control of the CICS run time and its resources.

CICS Explorer offers a lightweight yet powerful and extensible framework with a small footprint and fast start-up. It features powerful task-oriented views, context-sensitive resource editors and wizards for access to a broad range of CICS and IBM z/OS® data and control capabilities.

It also includes IBM Explorer for z/OS®—a common connection management and single sign-on component that simplifies access to z/OS-based sub-systems.

CICS Explorer features:

- **A centralized user interface makes CICS easier to manage** and boosts productivity.
- **Smart resource editors and wizards** simplify creation or editing of complex CICS resources.

Not in United States?

United States - English

Considering a purchase?

Contact IBM

[Email IBM](#)[Request a quote](#)[Or call us at: 1-877-426-3774](#)  
Priority code: Portfolio

CICS Explorer resources

[CICS showcase: Your portal to CICS information](#)[Ecosystem: CICS Explorer \(65KB\)](#)[Download: CICS Explorer](#)[CICS Explorer Forum](#)

## CICS Explorer for z/VSE client installation

- Download CICS Explorer zip file from the web
- Installation on the local workstation or remote network drive
- Configure the way it connects to the CICS system
  - Connect credentials, CICS system connection, ...
  - z/VSE supports the CICS Management Client Interface (CMCI) only

## CICS Explorer for z/VSE - CICS TS installation

- System requirements
  - CICS Explorer connects to z/VSE Version 5 only
  - Additional extended Dynamic Storage Area (EDSA) required
    - Size depends on active CICS resources
    - Good start is 50 MB (with additional PTF)
    - May impact partition allocation
  - TCP/IP for VSE/ESA 1.5F or IPv6/VSE 1.1 or Linux Fast Path (IPv4 only)
  
- Install PTFs for CICS Explorer support (included in z/VSE 5.1.1 or higher)
  - CICS Management Client Interface (CMCI)
  - CICSplex System Management (CPSM)
  - Code will be installed into PRD1.BASE
  - No additional z/VSE Librarian definitions (LIBDEFs) required

## CICS Explorer for z/VSE - CICS TS installation ...

- CICS setup skeletons in ICCF library 59
  - CICS System Definitions (CSD)
  - Transaction security setup
  - DCT (Destination Control Table)
  - Define / initialize dataset EYUPARM (for debugging)
  
- Add DLBL / EXTENT / ASSGN statements for EYUPARM dataset to CICS start-up job
- Changing CICS SIT (SEC=YES, TCPIP=YES)
- Define TCPIPSERVICE
- Adjust EDSALIM,if additional DSA space required
- Define a conversion table – DFHCNV
- Install new groups using CEDA

# CICS Explorer for z/VSE – start CORM transaction on server

```

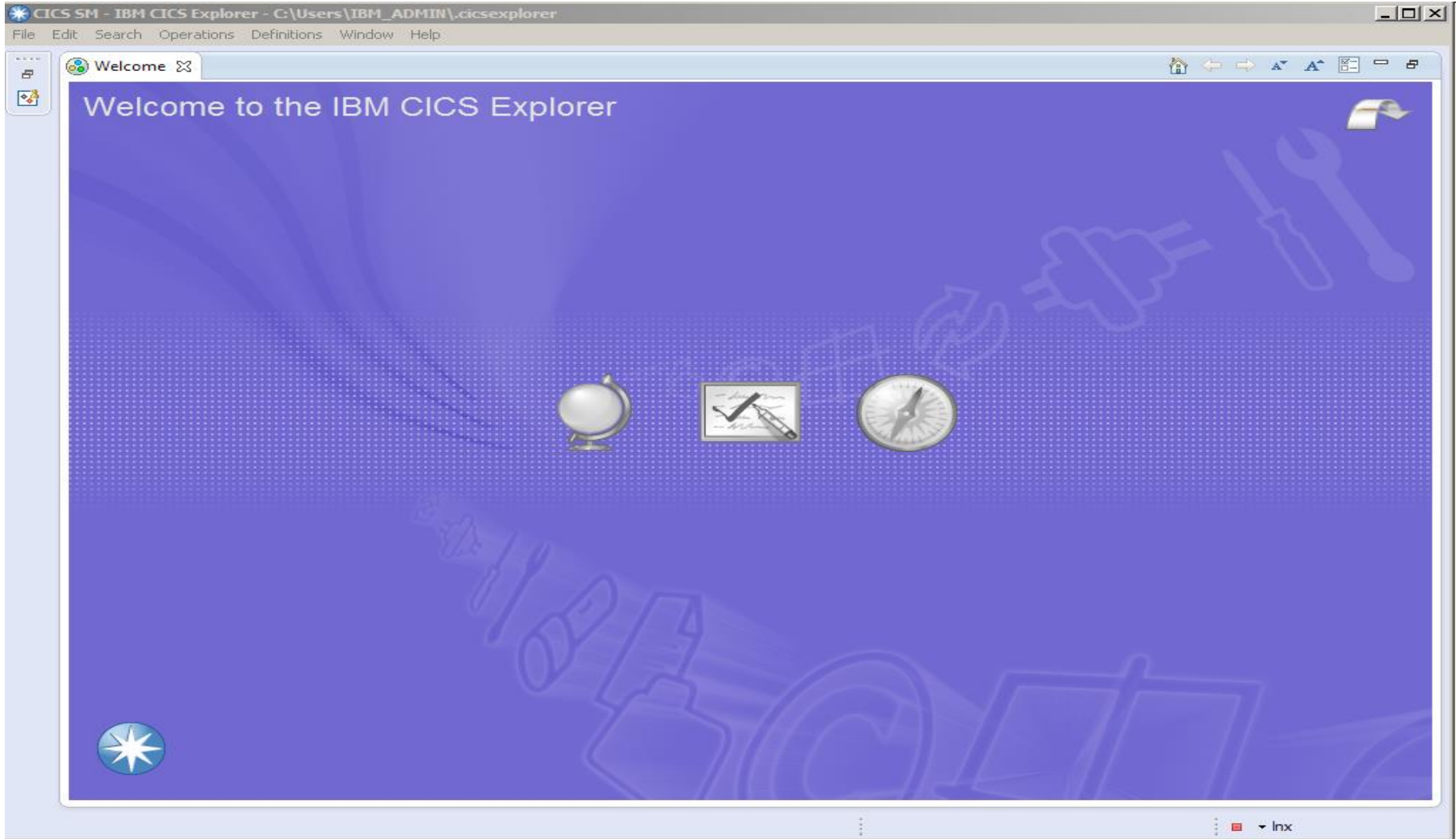
BOEVHSPB
File Edit View Communication Actions Window Help
SYSTEM: z/VSE z/VSE 5.1 TURBO (01) USER: SYS
VM USER ID:LNXSALM1 TIME: 15:35:14
F8 0488 DFHS00101I PRODCICS Sockets domain initialization has ended.
F8 0488 DFHWB1007 PRODCICS Initializing CICS Web environment.
F8 0487 BSD100I IPNRBSDC 01.05 F 09/12/11 18.37 032CE000 01E7
F8 0488 DFHWB1008 PRODCICS CICS Web environment initialization is complete.
F8 0488 DFHSI8430I PRODCICS About to link to PLT programs during the third
stage of initialization.
F8 0488 DFHSI8434I PRODCICS Control returned from PLT programs during the
third stage of initialization.
F8 0488 DFHSI1517 PRODCICS Control is being given to CICS.
F8 0488 DFHFC0208I PRODCICS
LSR pool 1 is being built dynamically by CICS because the following
are not defined: 'CI STPF' 'STDTRCC' 'MOVKEVI ENCTH' a delay
is possible. ← corm (transaction executed in CICS)
F8 0488 EYUNX0001I PRODCICS S...
F8 0488 EYUNX0030I PRODCICS SMSS successfully initiated from terminal A000
F8 0488 EYUXL0003I PRODCICS CPSM Version 420 SMSS startup in progress
F8 0488 EYUXL0119I PRODCICS CPSM Kernel loaded from EYU9XL02
F8 0488 EYUXL0005I PRODCICS Major Object created for KNL
F8 0488 EYUXL0005I PRODCICS Major Object created for TRC
F8 0488 EYUXL0005I PRODCICS Major Object created for MSG
F8 0488 EYUXL0005I PRODCICS Major Object created for SRV
F8 0488 EYUXL0005I PRODCICS Major Object created for CHE
F8 0488 EYUXL0005I PRODCICS Major Object created for DAT
F8 0488 EYUXL0005I PRODCICS Major Object created for QUE
F8 0488 EYUXL0005I PRODCICS Major Object created for MAS
==>

1=HLP 2=CPY 3=END 6=CNCL 7=BWD 8=FWD 9=EXPL 10=INP 11=PCUU 12=INFO
FILTER: ALL BWD MODE: REDISPLAY
MA a 28/006

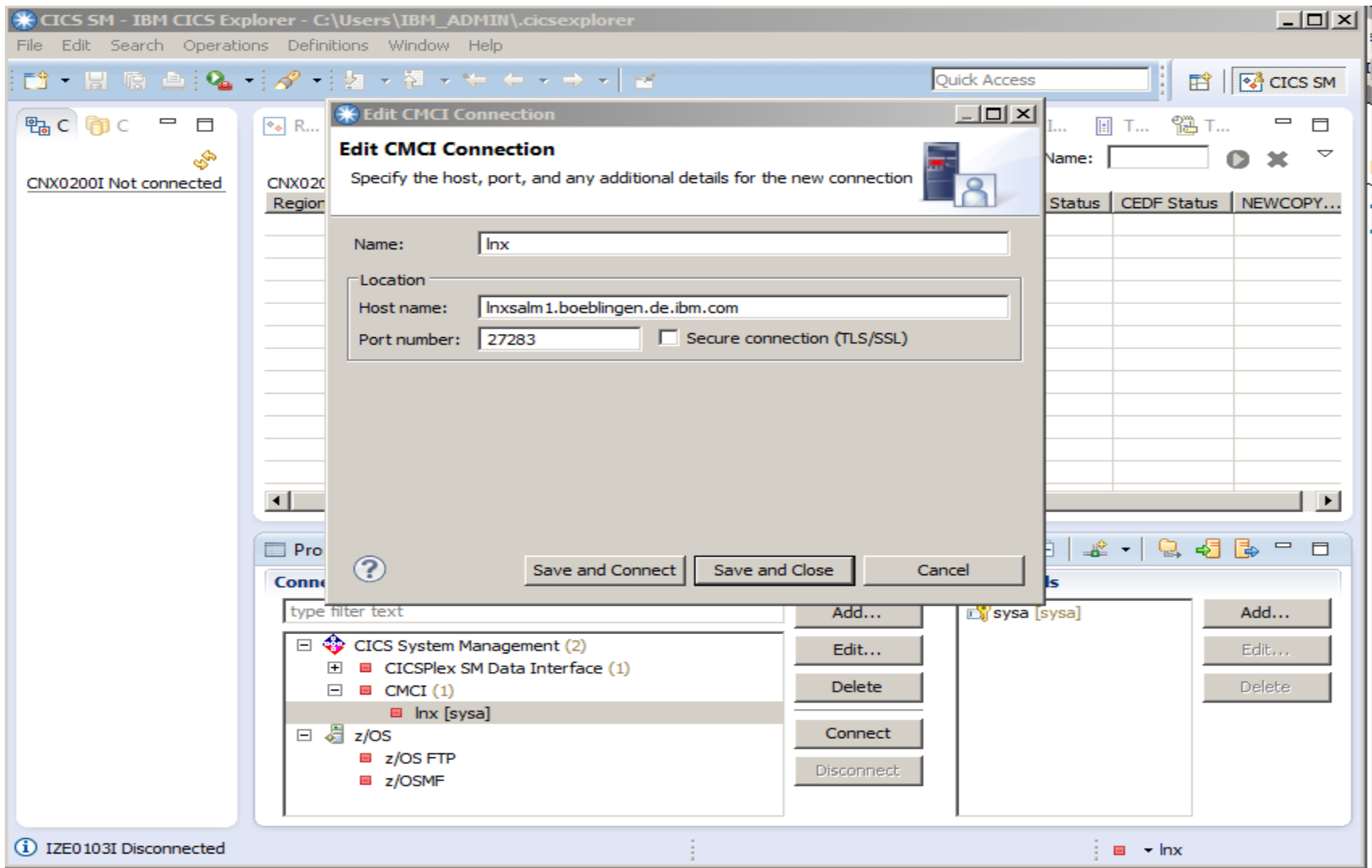
```



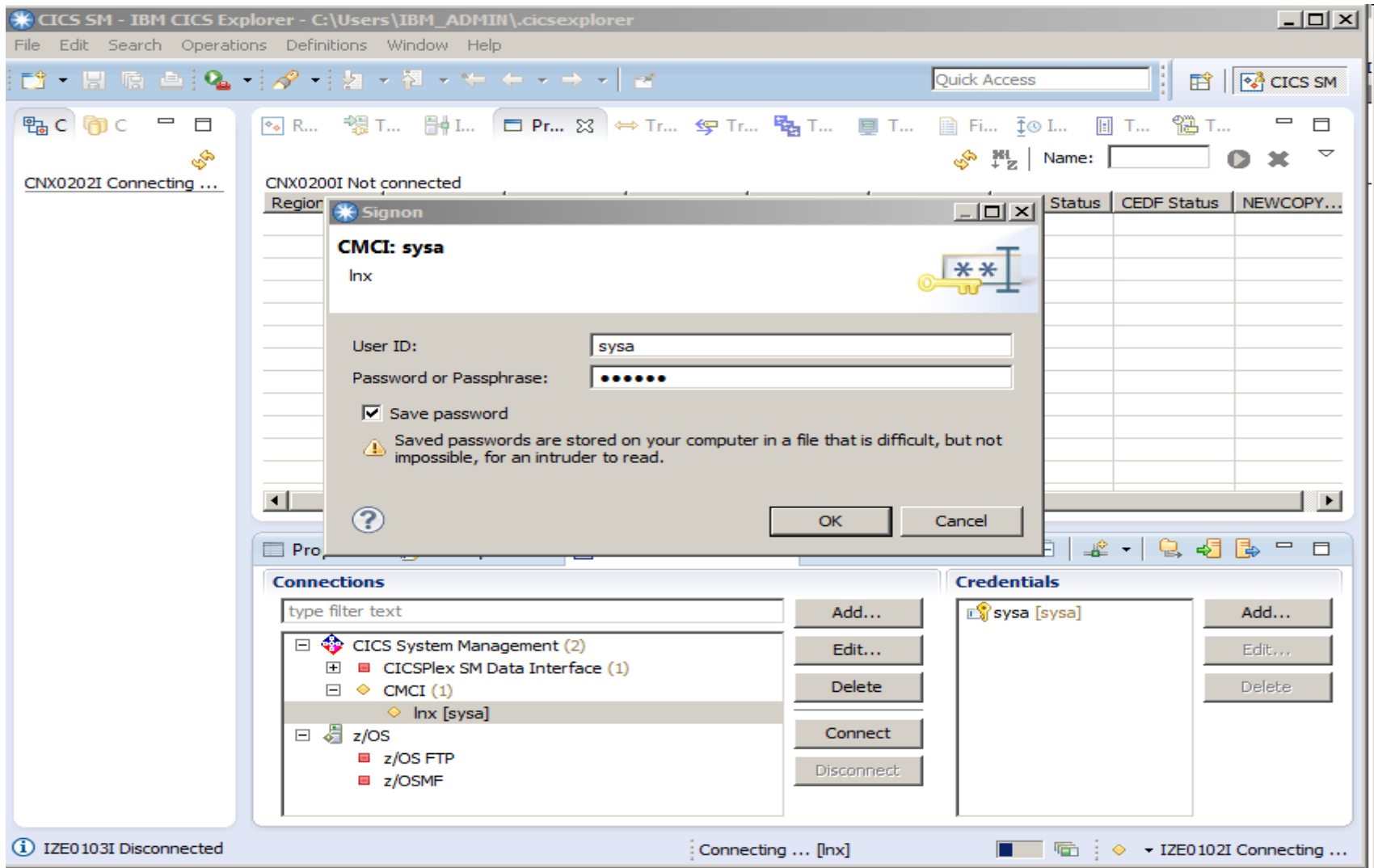
# CICS Explorer for z/VSE – welcome page



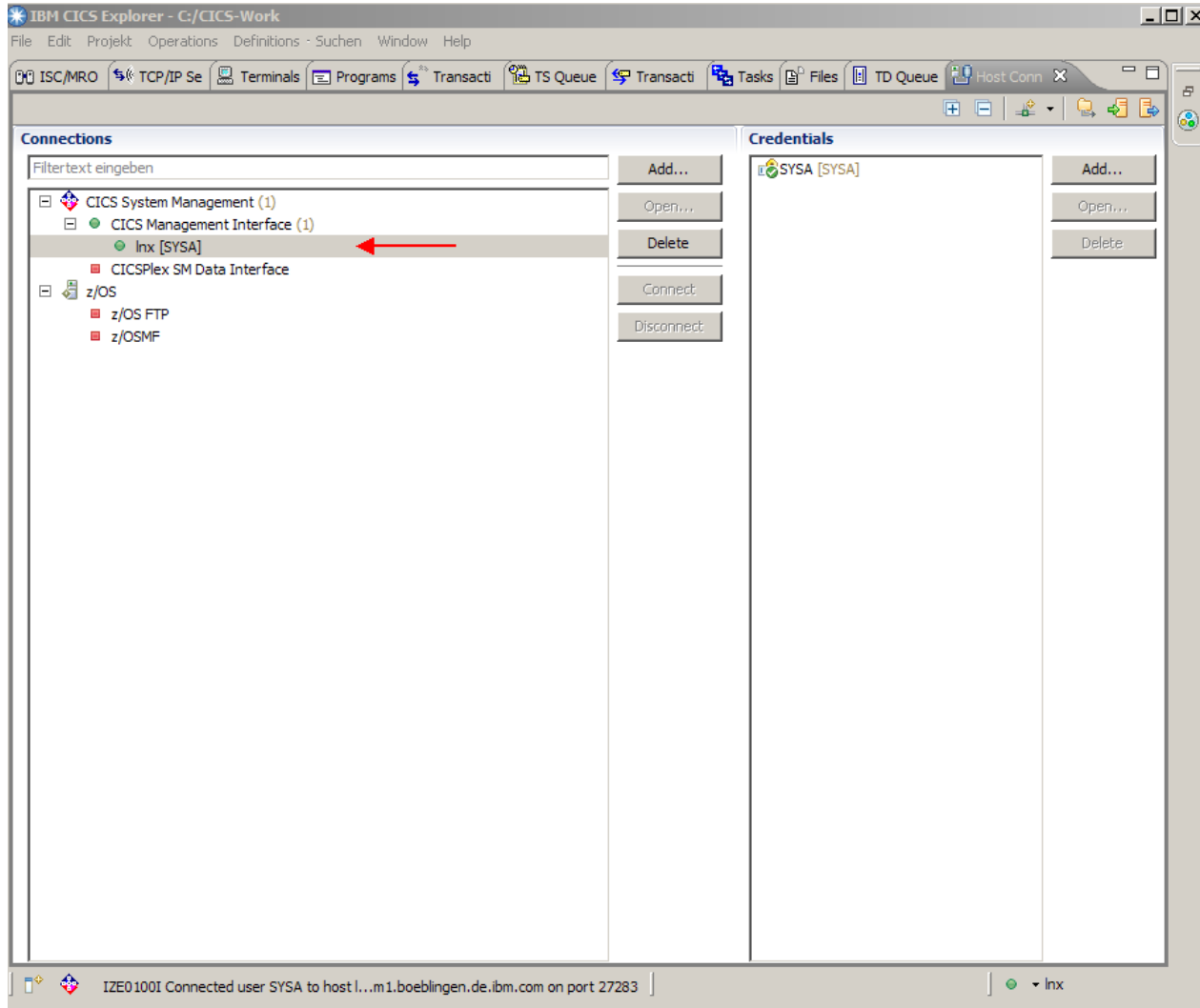
# CICS Explorer for z/VSE - configuration



# CICS Explorer for z/VSE – sign-on



# CICS Explorer for z/VSE – connected



IBM CICS Explorer - C:/CICS-Work

File Edit Projekt Operations Definitions - Suchen Window Help

Regions x Job Name:

CNX0211I Context: PRODCICS. Resource: CICS RGN. 1 records collected at 28.09.2012 17:52:13

Region	Job Name	MVS System...	Task Count	CICS Status	CICS TS L...	CICS Rele...	Total CPU	Page In C...	Page Out ...	I/O Count
PRODCICS	CICS2	N/A	4	✓ ACTIVE		V111	0000:00:0...	N/A	N/A	10144

IZE0100I Connected user SYSA to host l...m1.boeblingen.de.ibm.com on port 27283 | Inx

zAD21 - CICS TS for z/VSE Update

IBM CICS Explorer - C:/CICS-Work

File Edit Projekt Operations Definitions Suchen Window Help

ISC/MRO Con TCP/IP Servic Terminals Programs Transactions TS Queues Transaction Cl Tasks Files TD Queues

CNX0211I Context: PRODCICS. Resource: TERMNL. 62 records collected at 28.09.2012 18:02:25

Region	Name	Network Name	Acquire Status	Service Status	ATI Status	TTI Status	Session Status	User ID	Transaction ID
PRODCICS	-AAA	TMPLATE1	RELEASED	INSERVICE	ATI	TTI	NOCREATE	CICSUSER	
PRODCICS	-AAB	TMPLATE1	RELEASED	INSERVICE	ATI	TTI	CREATE	CICSUSER	
PRODCICS	-AAC	TMPLATE1	RELEASED	OUTSERVICE	ATI	TTI	CREATE	CICSUSER	
PRODCICS	-AAD	TMPLATE1	RELEASED	OUTSERVICE	ATI	TTI	CREATE	CICSUSER	
PRODCICS	-AAE	TMPLATE1	RELEASED	OUTSERVICE	ATI	TTI	CREATE	CICSUSER	
PRODCICS	-AAF	TMPLATE1	RELEASED	OUTSERVICE	ATI	TTI	CREATE	CICSUSER	
PRODCICS	-AAG	TMPLATE1	RELEASED	OUTSERVICE	ATI	TTI	CREATE	CICSUSER	
PRODCICS	-AAH	TMPLATE1	RELEASED	OUTSERVICE	ATI	TTI	CREATE	CICSUSER	
PRODCICS	-AAI	TMPLATE1	RELEASED	OUTSERVICE	ATI	TTI	CREATE	CICSUSER	
PRODCICS	-AAJ	TMPLATE1	RELEASED	OUTSERVICE	ATI	TTI	CREATE	CICSUSER	
PRODCICS	-AAK	TMPLATE1	RELEASED	OUTSERVICE	ATI	TTI	CREATE	CICSUSER	
PRODCICS	-AAL	TMPLATE1	RELEASED	OUTSERVICE	ATI	TTI	CREATE	CICSUSER	
PRODCICS	-AAM	TMPLATE2	RELEASED	INSERVICE	ATI	TTI	CREATE	CICSUSER	
PRODCICS	-AAN	TMPLATE3	RELEASED	INSERVICE	ATI	TTI	NOCREATE	CICSUSER	
PRODCICS	-AAO	TMPLATE3	RELEASED	INSERVICE	ATI	TTI	CREATE	CICSUSER	
PRODCICS	-AAP	TMPLATE3	RELEASED	OUTSERVICE	ATI	TTI	CREATE	CICSUSER	
PRODCICS	-AAQ	TMPLATE3	RELEASED	OUTSERVICE	ATI	TTI	CREATE	CICSUSER	
PRODCICS	-AAR	TMPLATE3	RELEASED	OUTSERVICE	ATI	TTI	CREATE	CICSUSER	
PRODCICS	-AAS	TMPLATE3	RELEASED	OUTSERVICE	ATI	TTI	CREATE	CICSUSER	
PRODCICS	-AAT	TMPLATE3	RELEASED	OUTSERVICE	ATI	TTI	CREATE	CICSUSER	
PRODCICS	-AAU	TMPLATE3	RELEASED	OUTSERVICE	ATI	TTI	CREATE	CICSUSER	
PRODCICS	-AAV	TMPLATE3	RELEASED	OUTSERVICE	ATI	TTI	CREATE	CICSUSER	
PRODCICS	-AAW	TMPLATE3	RELEASED	OUTSERVICE	ATI	TTI	CREATE	CICSUSER	
PRODCICS	-AAX	TMPLATE3	RELEASED	OUTSERVICE	ATI	TTI	CREATE	CICSUSER	
PRODCICS	-AAY	TMPLATE3	RELEASED	OUTSERVICE	ATI	TTI	CREATE	CICSUSER	
PRODCICS	CBRF	CBRF	RELEASED	INSERVICE	ATI	TTI	NOCREATE	CICSUSER	
PRODCICS	CERR		NOTAPPLIC	INSERVICE	NOATI	TTI	NOTAPPLIC	CICSUSER	
PRODCICS	CNSL		NOTAPPLIC	INSERVICE	ATI	TTI	NOTAPPLIC	CNSL	
PRODCICS	CO01		NOTAPPLIC	INSERVICE	ATI	TTI	NOTAPPLIC	CNSL	
PRODCICS	CO02		NOTAPPLIC	INSERVICE	ATI	TTI	NOTAPPLIC	CNSL	
PRODCICS	CO03		NOTAPPLIC	INSERVICE	ATI	TTI	NOTAPPLIC	CNSL	
PRODCICS	CO04		NOTAPPLIC	INSERVICE	ATI	TTI	NOTAPPLIC	CNSL	
PRODCICS	CO05		NOTAPPLIC	INSERVICE	ATI	TTI	NOTAPPLIC	CNSL	
PRODCICS	CO06		NOTAPPLIC	INSERVICE	ATI	TTI	NOTAPPLIC	CNSL	
PRODCICS	CO07		NOTAPPLIC	INSERVICE	ATI	TTI	NOTAPPLIC	CNSL	
PRODCICS	CO08		NOTAPPLIC	INSERVICE	ATI	TTI	NOTAPPLIC	CNSL	
PRODCICS	CO09		NOTAPPLIC	INSERVICE	ATI	TTI	NOTAPPLIC	CNSL	
PRODCICS	CO10		NOTAPPLIC	INSERVICE	ATI	TTI	NOTAPPLIC	CNSL	
PRODCICS	CO11		NOTAPPLIC	INSERVICE	ATI	TTI	NOTAPPLIC	CNSL	
PRODCICS	CO12		NOTAPPLIC	INSERVICE	ATI	TTI	NOTAPPLIC	CNSL	
PRODCICS	CO13		NOTAPPLIC	INSERVICE	ATI	TTI	NOTAPPLIC	CNSL	

IZE0100I Connected user SYSA to host l...m1.boeblingen.de.ibm.com on port 27283 | Inx

zAD21 - CICS TS for z/VSE Update

IBM CICS Explorer - C:/CICS-Work

File Edit Projekt Operations Definitions - Suchen Window Help

ISC/MRO Con TCP/IP Serv Terminal Programs Transactions TS Queues Transaction Cl Tasks Files TD Queues

CNX0211I Context: PRODCICS. Resource: PROGRAM. 1.603 records collected at 28.09.2012 18:04:08

Region	Name	Status	Use Count	Concurrent Us...	Language	Share Status	CEDF Status	NEWCOPY Status
PRODCICS	\$EDTCPM	✓ ENABLED	0	0	C	N/A	CEDF	NOTREQUIRED
PRODCICS	\$EDTCPV	✓ ENABLED	0	0	C	N/A	CEDF	NOTREQUIRED
PRODCICS	ARXITCPU	✓ ENABLED	0	0	ASSEMBLER	N/A	CEDF	NOTREQUIRED
PRODCICS	BSTADMII	✓ ENABLED	0	0	ASSEMBLER	N/A	CEDF	NOTREQUIRED
PRODCICS	CEEBINT	✓ ENABLED	1	1	ASSEMBLER	N/A	CEDF	NOTREQUIRED
PRODCICS	CEEBNATX	✓ ENABLED	0	0	ASSEMBLER	N/A	CEDF	NOTREQUIRED
PRODCICS	CEECBLDY	✓ ENABLED	0	0	ASSEMBLER	N/A	CEDF	NOTREQUIRED
PRODCICS	CEECICIS	✓ ENABLED	1	1	ASSEMBLER	N/A	CEDF	NOTREQUIRED
PRODCICS	CEECDATX	✓ ENABLED	0	0	ASSEMBLER	N/A	CEDF	NOTREQUIRED
PRODCICS	CEECMI	✓ ENABLED	0	0	ASSEMBLER	N/A	CEDF	NOTREQUIRED
PRODCICS	CEECOPT	✓ ENABLED	1	1	ASSEMBLER	N/A	CEDF	NOTREQUIRED
PRODCICS	CEECRHP	✓ ENABLED	0	0	ASSEMBLER	N/A	CEDF	NOTREQUIRED
PRODCICS	CEECXITA	✓ ENABLED	1	1	ASSEMBLER	N/A	CEDF	NOTREQUIRED
PRODCICS	CEECXTAN	✓ ENABLED	1	1	ASSEMBLER	N/A	CEDF	NOTREQUIRED
PRODCICS	CEECZST	✓ ENABLED	0	0	ASSEMBLER	N/A	CEDF	NOTREQUIRED
PRODCICS	CEEDATE	✓ ENABLED	0	0	ASSEMBLER	N/A	CEDF	NOTREQUIRED
PRODCICS	CEEDATM	✓ ENABLED	0	0	ASSEMBLER	N/A	CEDF	NOTREQUIRED
PRODCICS	CEEDAYS	✓ ENABLED	0	0	ASSEMBLER	N/A	CEDF	NOTREQUIRED
PRODCICS	CEEDCOD	✓ ENABLED	0	0	ASSEMBLER	N/A	CEDF	NOTREQUIRED
PRODCICS	CEEDSHP	✓ ENABLED	0	0	ASSEMBLER	N/A	CEDF	NOTREQUIRED
PRODCICS	CEEDYWK	✓ ENABLED	0	0	ASSEMBLER	N/A	CEDF	NOTREQUIRED
PRODCICS	CEEENV	✓ ENABLED	0	0	ASSEMBLER	N/A	CEDF	NOTREQUIRED
PRODCICS	CEEEV000	✓ ENABLED	0	0	NOTDEFINED	N/A	CEDF	REQUIRED
PRODCICS	CEEEV001	✓ ENABLED	0	0	NOTDEFINED	N/A	CEDF	REQUIRED
PRODCICS	CEEEV002	✓ ENABLED	0	0	NOTDEFINED	N/A	CEDF	REQUIRED
PRODCICS	CEEEV003	✓ ENABLED	1	1	ASSEMBLER	N/A	CEDF	NOTREQUIRED
PRODCICS	CEEEV004	✓ ENABLED	0	0	NOTDEFINED	N/A	CEDF	REQUIRED
PRODCICS	CEEEV005	✓ ENABLED	1	1	ASSEMBLER	N/A	CEDF	NOTREQUIRED
PRODCICS	CEEEV006	✓ ENABLED	0	0	NOTDEFINED	N/A	CEDF	REQUIRED
PRODCICS	CEEEV007	✓ ENABLED	0	0	NOTDEFINED	N/A	CEDF	REQUIRED
PRODCICS	CEEEV008	✓ ENABLED	0	0	NOTDEFINED	N/A	CEDF	REQUIRED
PRODCICS	CEEEV009	✓ ENABLED	0	0	NOTDEFINED	N/A	CEDF	REQUIRED
PRODCICS	CEEEV010	✓ ENABLED	1	1	ASSEMBLER	N/A	CEDF	NOTREQUIRED
PRODCICS	CEEEV011	✓ FNARFD	0	0	NOTDEFINED	N/A	CEDF	REQUIRED

IZE0100I Connected user SYSA to host l...m1.boeblingen.de.ibm.com on port 27283

Inx



The screenshot shows the IBM CICS Explorer interface. The main window displays a table of programs for the PRODCICS region. A red arrow points to the 'Programs' tab. An overlaid terminal window shows the output of a CICS command, listing program details such as name, length, language, and status.

Region	Name	Status	Use Count	Concurrent Us...	Language	Share Status	CEDF Status	NEWCOPY Status
PRODCICS	\$EDCTCPM	✓ ENABLED	0	0	C	N/A	CEDF	NOTREQUIRED
PRODCICS	\$EDTCPV	✓ ENABLED	0	0	C	N/A	CEDF	NOTREQUIRED
PRODCICS	ARXITCPU	✓ ENABLED	0	0	ASSEMBLER	N/A	CEDF	NOTREQUIRED
PRODCICS	BSTADMII	✓ ENABLED	0	0	ASSEMBLER	N/A	CEDF	NOTREQUIRED
PRODCICS	CEEBINT	✓ ENABLED	1	1	ASSEMBLER	N/A	CEDF	NOTREQUIRED
PRODCICS	CEEBNATX	✓ ENABLED	0	0	ASSEMBLER	N/A	CEDF	NOTREQUIRED
PRODCICS	CEECBLDY	✓ ENABLED	0	0	ASSEMBLER	N/A	CEDF	NOTREQUIRED
PRODCICS	CEECCICS	✓ ENABLED	1	1				
PRODCICS	CEECDATX	✓ ENABLED	0	0				
PRODCICS	CEECMI	✓ ENABLED	0	0				
PRODCICS	CEECOPT	✓ ENABLED	1	1				
PRODCICS	CEECRHP	✓ ENABLED	0	0				
PRODCICS	CEECXITA	✓ ENABLED	1	1				
PRODCICS	CEECXTAN	✓ ENABLED	1	1				
PRODCICS	CEECZST	✓ ENABLED	0	0				
PRODCICS	CEEDATE	✓ ENABLED	0	0				
PRODCICS	CEEDATM	✓ ENABLED	0	0				
PRODCICS	CEEDAYS	✓ ENABLED	0	0				
PRODCICS	CEEDCOD	✓ ENABLED	0	0				
PRODCICS	CEEDSHIP	✓ ENABLED	0	0				
PRODCICS	CEEDYWK	✓ ENABLED	0	0				
PRODCICS	CEENV	✓ ENABLED	0	0				
PRODCICS	CEEEV000	✓ ENABLED	0	0				
PRODCICS	CEEEV001	✓ ENABLED	0	0				
PRODCICS	CEEEV002	✓ ENABLED	0	0				
PRODCICS	CEEEV003	✓ ENABLED	1	1				
PRODCICS	CEEEV004	✓ ENABLED	0	0				
PRODCICS	CEEEV005	✓ ENABLED	1	1				
PRODCICS	CEEEV006	✓ ENABLED	0	0				
PRODCICS	CEEEV007	✓ ENABLED	0	0				
PRODCICS	CEEEV008	✓ ENABLED	0	0				
PRODCICS	CEEEV009	✓ ENABLED	0	0				
PRODCICS	CEEEV010	✓ ENABLED	1	1				
PRODCICS	CEEEV011	✓ FNARI FD	0	0				

```

I PROG
STATUS: RESULTS - OVERTYPE TO MODIFY
  Prog($EDCTCPM) Len(0000000) C Pro Ena Pri Ced
    Res(000) Use(0000000000) Bel Uex Ful
  Prog($EDTCPV) Len(0000000) C Pro Ena Pri Ced
    Res(000) Use(0000000000) Bel Uex Ful
  Prog(ARXITCPU) Len(0000000) Ass Pro Ena Pri Ced
    Res(000) Use(0000000000) Bel Uex Ful
  Prog(BSTADMII) Len(0000000) Ass Pro Ena Pri Ced
    Res(000) Use(0000000000) Bel Cex Ful
  Prog(CEEBINT ) Len(0000008) Ass Pro Ena Pri Ced
    Res(001) Use(0000000001) Bel Uex Ful
  Prog(CEEBNATX) Len(0000000) Ass Pro Ena Sha Ced
    Res(000) Use(0000000000) Bel Uex Ful
  Prog(CEECBLDY) Len(0000000) Ass Pro Ena Pri Ced
    Res(000) Use(0000000000) Bel Uex Ful
  Prog(CEECCICS) Len(0043464) Ass Pro Ena Sha Ced
    Res(001) Use(0000000001) Bel Uex Ful
+ Prog(CEECDATX) Len(0000000) Ass Pro Ena Pri Ced
  Res(000) Use(0000000000) Bel Uex Ful

SYSID=CIC2 APPLID=PRODCICS
RESPONSE: NORMAL TIME: 16.21.55 DATE: 09.28.12
PF 1 HELP 3 END 7 SBH 8 SFH 9 MSG 10 SB 11 SF
  
```



zAD21 - CICS TS for z/VSE Update

IBM CICS Explorer - C:/CICS-Work

File Edit Projekt Operations Definitions - Suchen Window Help

ISC/MRO Con TCP/IP Servic Terminals Programs **Transactions** TS Queues Transaction Cl Tasks Files TD Queues

CNX0211I Context: PRODCICS, Resource: LOCTRAN, 259 records collected at 28.09.2012 18:06:15

Region	Name	Status	Use Count	Program	Priority	Transaction ...	Purgeability	Dumping	Routing
PRODCICS	cler	ENABLED	0	CEL4RTO	1	DFHTCL00	NOTPURGEA...	TRANDUMP	STATIC
PRODCICS	disc	ENABLED	0	CLIENT01	1	DFHTCL00	NOTPURGEA...	TRANDUMP	STATIC
PRODCICS	emai	ENABLED	0	CLIENT01	1	DFHTCL00	NOTPURGEA...	TRANDUMP	STATIC
PRODCICS	ftp	ENABLED	0	FTP01	1	DFHTCL00	NOTPURGEA...	TRANDUMP	STATIC
PRODCICS	iccf	ENABLED	0	DTSICCF	1	DFHTCL00	NOTPURGEA...	TRANDUMP	STATIC
PRODCICS	lpr	ENABLED	0	CLIENT01	1	DFHTCL00	NOTPURGEA...	TRANDUMP	STATIC
PRODCICS	newc	ENABLED	0	EDCCNEWC	1	DFHTCL00	NOTPURGEA...	TRANDUMP	STATIC
PRODCICS	ping	ENABLED	0	CLIENT01	1	DFHTCL00	NOTPURGEA...	TRANDUMP	STATIC
PRODCICS	rexe	ENABLED	0	CLIENT01	1	DFHTCL00	NOTPURGEA...	TRANDUMP	STATIC
PRODCICS	ropc	ENABLED	0	EDCYCROP	1	DFHTCL00	NOTPURGEA...	TRANDUMP	STATIC
PRODCICS	teln	ENABLED	0	TELNET01	1	DFHTCL00	NOTPURGEA...	TRANDUMP	STATIC
PRODCICS	trac	ENABLED	0	CLIENT01	1	DFHTCL00	NOTPURGEA...	TRANDUMP	STATIC
PRODCICS	APVU	ENABLED	0	INWPCCOM	20	DFHTCL00	PURGEABLE	TRANDUMP	STATIC
PRODCICS	ARPS	ENABLED	0	DFH\$ARPS	1	DFHTCL00	NOTPURGEA...	TRANDUMP	STATIC
PRODCICS	CATA	ENABLED	1	DFHZATA	255	DFHTCL00	PURGEABLE	TRANDUMP	STATIC
PRODCICS	CATD	ENABLED	1	DFHZATD	255	DFHTCL00	PURGEABLE	TRANDUMP	STATIC
PRODCICS	CATR	ENABLED	1	DFHZATR	255	DFHTCL00	NOTPURGEA...	TRANDUMP	STATIC
PRODCICS	CCIN	ENABLED	0	DFHZCN1	254	DFHCOMCL	PURGEABLE	TRANDUMP	STATIC
PRODCICS	CDTS	ENABLED	0	DFHZATS	255	DFHTCL00	PURGEABLE	TRANDUMP	STATIC
PRODCICS	CEBR	ENABLED	0	DFHEDFBR	1	DFHTCL00	NOTPURGEA...	TRANDUMP	STATIC
PRODCICS	CECI	ENABLED	0	DFHECIP	1	DFHTCL00	PURGEABLE	TRANDUMP	STATIC
PRODCICS	CECS	ENABLED	0	DFHECSP	1	DFHTCL00	PURGEABLE	TRANDUMP	STATIC
PRODCICS	CEDA	ENABLED	0	DFHEDAP	1	DFHTCL00	PURGEABLE	TRANDUMP	STATIC
PRODCICS	CEDB	ENABLED	0	DFHEDAP	1	DFHTCL00	PURGEABLE	TRANDUMP	STATIC
PRODCICS	CEDC	ENABLED	0	DFHEDAP	1	DFHTCL00	PURGEABLE	TRANDUMP	STATIC
PRODCICS	CEDF	ENABLED	0	DFHEDFP	1	DFHTCL00	PURGEABLE	TRANDUMP	STATIC
PRODCICS	CEDX	ENABLED	0	DFHEDFP	1	DFHTCL00	PURGEABLE	TRANDUMP	STATIC
PRODCICS	CEGN	ENABLED	0	DFHCEGN	255	DFHTCL00	PURGEABLE	TRANDUMP	STATIC
PRODCICS	CEHP	ENABLED	0	DFHCHS	1	DFHTCL00	NOTPURGEA...	TRANDUMP	STATIC
PRODCICS	CEHS	ENABLED	0	DFHCHS	1	DFHTCL00	NOTPURGEA...	TRANDUMP	STATIC
PRODCICS	CEMS	ENABLED	0	DFHEMSP	1	DFHTCL00	NOTPURGEA...	TRANDUMP	STATIC
PRODCICS	CEMT	ENABLED	0	DFHEMTP	255	DFHTCL00	NOTPURGEA...	TRANDUMP	STATIC
PRODCICS	CEOS	ENABLED	0	DFHEMSP	1	DFHTCL00	NOTPURGEA...	TRANDUMP	STATIC
PRODCICS	CEOT	ENABLED	0	DFHEOTP	255	DFHTCL00	PURGEABLE	TRANDUMP	STATIC
PRODCICS	CEPW	ENABLED	0	DFHPSOP	254	DFHTCL00	NOTPURGEA...	TRANDUMP	STATIC
PRODCICS	CESC	ENABLED	0	DFHCESC	255	DFHTCL00	NOTPURGEA...	TRANDUMP	STATIC
PRODCICS	CESF	ENABLED	0	DFHSFP	1	DFHTCL00	PURGEABLE	TRANDUMP	STATIC
PRODCICS	CESN	ENABLED	0	DFHSNP	1	DFHTCL00	PURGEABLE	TRANDUMP	STATIC
PRODCICS	CEST	ENABLED	0	DFHESTP	255	DFHTCL00	PURGEABLE	TRANDUMP	STATIC
PRODCICS	CETR	ENABLED	0	DFHCETRA	255	DFHTCL00	NOTPURGEA...	TRANDUMP	STATIC
PRODCICS	CFTS	ENABLED	0	DFHZATS	255	DFHTCL00	NOTPURGEA...	TRANDUMP	STATIC

IZE0100I Connected user SYSA to host l...m1.boeblingen.de.ibm.com on port 27283 | Inx

zAD21 - CICS TS for z/VSE Update

IBM CICS Explorer - C:/CICS-Work

File Edit Projekt Operations Definitions - Suchen Window Help

ISC/MRO Con TCP/IP Servic Terminals Programs Transactions TS Queues Transaction Cl Tasks Files TD Queues

CNX0211I Context: PRODCICS. Resource: LOCFILE. 14 records collected at 28.09.2012 18:07:47

Region	Name	Status	Open Status	Add	Browse	Delete	Read	Update	LSR Pool ID	DS Name
PRODCICS	BSTCNTL	✓ ENABLED	CLOSED	ADDABLE	BROWSABLE	DELETABLE	READABLE	UPDATABLE	0	VSE.BSTCN...
PRODCICS	DFHCSD	UNENABLED	CLOSED	ADDABLE	BROWSABLE	DELETABLE	READABLE	UPDATABLE	1	CICS.CSD
PRODCICS	EZACACH	✓ ENABLED	CLOSED	ADDABLE	BROWSABLE	DELETABLE	READABLE	UPDATABLE	1	
PRODCICS	EZACONF	✓ ENABLED	CLOSED	ADDABLE	BROWSABLE	DELETABLE	READABLE	NOTUPDAT...	1	
PRODCICS	IESCNTL	✓ ENABLED	OPEN	ADDABLE	BROWSABLE	DELETABLE	READABLE	UPDATABLE	1	VSE.CONT...
PRODCICS	IESLDUM	✓ ENABLED	CLOSED	ADDABLE	BROWSABLE	DELETABLE	READABLE	UPDATABLE	1	VSE.LDAP...
PRODCICS	IESPRB	✓ ENABLED	OPEN	ADDABLE	NOTBROW...	NOTDELET...	READABLE	UPDATABLE	1	CICS2.ONL...
PRODCICS	IESROUT	✓ ENABLED	OPEN	ADDABLE	BROWSABLE	DELETABLE	READABLE	UPDATABLE	1	VSE.MESSA...
PRODCICS	IESTRFL	✓ ENABLED	OPEN	NOTADDABLE	NOTBROW...	NOTDELET...	READABLE	NOTUPDAT...	1	VSE.TEXT...
PRODCICS	INWFILE	✓ ENABLED	CLOSED	ADDABLE	BROWSABLE	DELETABLE	READABLE	UPDATABLE	1	PC.HOST.T...
PRODCICS	RFSDIR1	✓ ENABLED	CLOSED	ADDABLE	BROWSABLE	DELETABLE	READABLE	UPDATABLE	1	CICREX.FP...
PRODCICS	RFSDIR2	✓ ENABLED	CLOSED	ADDABLE	BROWSABLE	DELETABLE	READABLE	UPDATABLE	1	CICREX.FP...
PRODCICS	RFSPOL1	✓ ENABLED	CLOSED	ADDABLE	BROWSABLE	DELETABLE	READABLE	UPDATABLE	1	CICREX.FP...
PRODCICS	RFSPOL2	✓ ENABLED	CLOSED	ADDABLE	BROWSABLE	DELETABLE	READABLE	UPDATABLE	1	CICREX.FP...

IZE0100I Connected user SYSA to host l...m1.boeblingen.de.ibm.com on port 27283 | Inx

## More Information

... on VSE home page: <http://ibm.com/vse>

- Ingolf's z/VSE blog: <https://www.ibm.com/developerworks/mydeveloperworks/blogs/vse>
  
- **New:** Hints and Tips for z/VSE 5.2:
  - <http://www.ibm.com/systems/z/os/zvse/documentation/#hints>
  
- 64 bit virtual information:
  - IBM z/VSE Extended Addressability, Version 5 Release 1
  - IBM z/VSE System Macro Reference, Version 5 Release 1
  
- CICS Explorer: <http://www.ibm.com/software/htp/cics/explorer/>
  
- IBM Redbooks:
  - Introduction to the New Mainframe: z/VSE Basics  
<http://www.redbooks.ibm.com/abstracts/sg247436.html?Open>
  - Security on IBM z/VSE – updated  
<http://www.redbooks.ibm.com/Redbooks.nsf/RedbookAbstracts/sg247691.html?Open>
  - z/VSE Using DB2 on Linux for System z  
<http://www.redbooks.ibm.com/abstracts/sg247690.html?Open>
  - **New:** Enhanced Networking on IBM z/VSE  
<http://www.redbooks.ibm.com/Redbooks.nsf/RedpieceAbstracts/sg248091.html?Open>
  
- Please contact z/VSE: <https://www-03.ibm.com/systems/z/os/zvse/contact/contact.html>  
or me – Ingolf Salm – [salm@de.ibm.com](mailto:salm@de.ibm.com) – for any questions

## Questions ?



## Growing your IBM skills – a new model for training

*Meet the authorized IBM Global Training Providers in the Enterprise Solution Showcase*

- Access to training in more cities local to you, where and when you need it, and in the format you want
  - Use [IBM Training Search](#) to locate training classes near to you
- Demanding a high standard of quality / see the paths to success
  - Learn about the [New IBM Training Model](#) and see how IBM is driving quality
  - Check [Training Paths and Certifications](#) to find the course that is right for you
- [Academic Initiative](#) works with colleges and universities to introduce real-world technology into the classroom, giving students the hands-on experience valued by employers in today's marketplace
- [www.ibm.com/training](http://www.ibm.com/training) is the main IBM training page for accessing our comprehensive portfolio of skills and career accelerators that are designed to meet all your training needs.




Global Knowledge.