



2013

**IBM System z
Technical University**

10-14 June | Munchen, Germany

zVM21

z/VSE Trends & Directions

Klaus Goebel, kgoebel@de.ibm.com

Trademarks

The following are trademarks of the International Business Machines Corporation in the United States and/or other countries.

| | | | |
|---|-------------------------|------------------------------------|----------------|
| APPN* | HiperSockets | OS/390* | VM/ESA* |
| CICS* | HyperSwap | Parallel Sysplex* | VSE/ESA |
| DB2* | IBM* | PR/SM | VTAM* |
| DB2 Connect | IBM eServer | Processor Resource/Systems Manager | WebSphere* |
| DirMaint | IBM e(logo)server* | RACF* | z/Architecture |
| e-business logo* | IBM logo* | Resource Link | z/OS* |
| ECKD | IMS | RMF | z/VM* |
| Enterprise Storage Server* | Language Environment* | S/390* | z/VSE |
| ESCON* | MQSeries* | Sysplex Timer* | zSeries* |
| FICON* | Multiprise* | System z9 | |
| GDPS* | NetView* | TotalStorage* | |
| Geographically Dispersed Parallel Sysplex | On demand business logo | Virtualization Engine | |

* Registered trademarks of IBM Corporation

The following are trademarks or registered trademarks of other companies.

Java and all Java-related trademarks and logos are trademarks of Sun Microsystems, Inc., in the United States and other countries

Linux is a registered trademark of Linus Torvalds in the United States, other countries, or both.

UNIX is a registered trademark of The Open Group in the United States and other countries.

Microsoft, Windows and Windows NT are registered trademarks of Microsoft Corporation.

Red Hat, the Red Hat "Shadow Man" logo, and all Red Hat-based trademarks and logos are trademarks or registered trademarks of Red Hat, Inc., in the United States and other countries.

SET and Secure Electronic Transaction are trademarks owned by SET Secure Electronic Transaction LLC.

* All other products may be trademarks or registered trademarks of their respective companies.

Notes:

Performance is in Internal Throughput Rate (ITR) ratio based on measurements and projections using standard IBM benchmarks in a controlled environment. The actual throughput that any user will experience will vary depending upon considerations such as the amount of multiprogramming in the user's job stream, the I/O configuration, the storage configuration, and the workload processed. Therefore, no assurance can be given that an individual user will achieve throughput improvements equivalent to the performance ratios stated here.

IBM hardware products are manufactured from new parts, or new and serviceable used parts. Regardless, our warranty terms apply.

All customer examples cited or described in this presentation are presented as illustrations of the manner in which some customers have used IBM products and the results they may have achieved. Actual environmental costs and performance characteristics will vary depending on individual customer configurations and conditions.

This publication was produced in the United States. IBM may not offer the products, services or features discussed in this document in other countries, and the information may be subject to change without notice. Consult your local IBM business contact for information on the product or services available in your area.

All statements regarding IBM's future direction and intent are subject to change or withdrawal without notice, and represent goals and objectives only.

Information about non-IBM products is obtained from the manufacturers of those products or their published announcements. IBM has not tested those products and cannot confirm the performance, compatibility, or any other claims related to non-IBM products. Questions on the capabilities of non-IBM products should be addressed to the suppliers of those products.

Prices subject to change without notice. Contact your IBM representative or Business Partner for the most current pricing in your geography.

Notice Regarding Specialty Engines (e.g., zIIPs, zAAPs and IFLs):

Any information contained in this document regarding Specialty Engines ("SEs") and SE eligible workloads provides only general descriptions of the types and portions of workloads that are eligible for execution on Specialty Engines (e.g., zIIPs, zAAPs, and IFLs). IBM authorizes customers to use IBM SE only to execute the processing of Eligible Workloads of specific Programs expressly authorized by IBM as specified in the "Authorized Use Table for IBM Machines" provided at www.ibm.com/systems/support/machine_warranties/machine_code/aut.html ("AUT").

No other workload processing is authorized for execution on an SE.

IBM offers SEs at a lower price than General Processors/Central Processors because customers are authorized to use SEs only to process certain types and/or amounts of workloads as specified by IBM in the AUT.

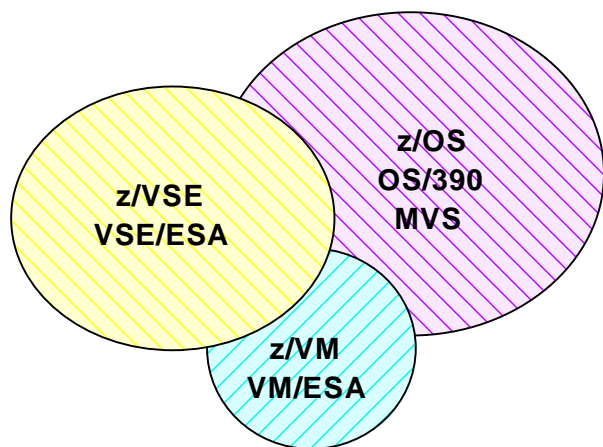
Agenda

- ➔ § **z/VSE Status & Support**
- § **z/VSE Strategy**
- § **z/VSE Modernization Options**
- § **z/VSE Reference Customers & Learning**
- § **z/VSE Functional Enhancements**
 - z/VSE V5.1
 - z/VSE V5.1+
 - z/VSE V5.1++
- § **Wrap-up**



Operating Systems on IBM System z

§ 25% of worldwide System z servers have VSE* installed

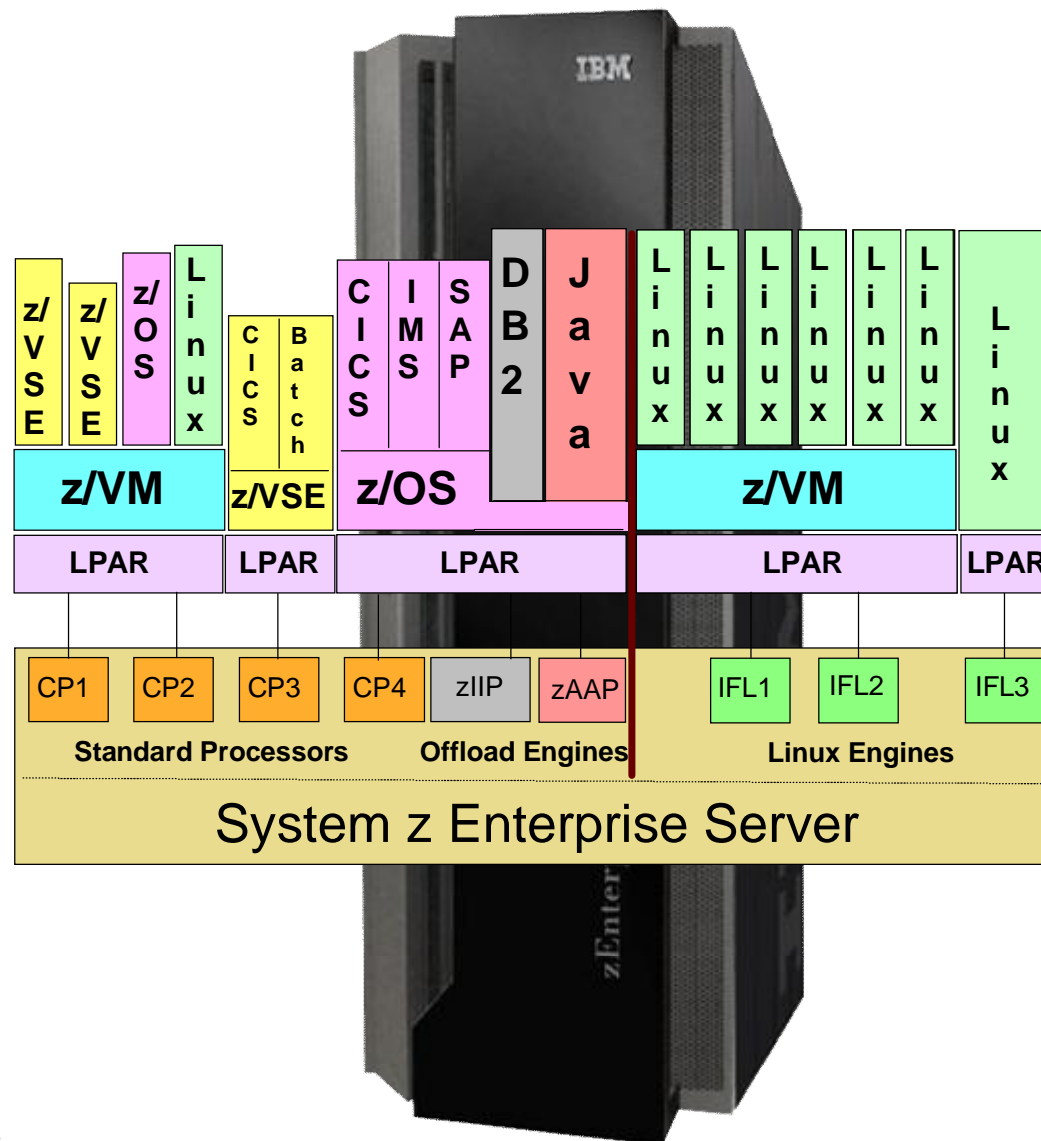


§ VSE population is 40% in US, 40% in Europe, 20% in RoW

§ Worldwide 50% run VSE under z/VM, in Europe 90+% are VSE under z/VM

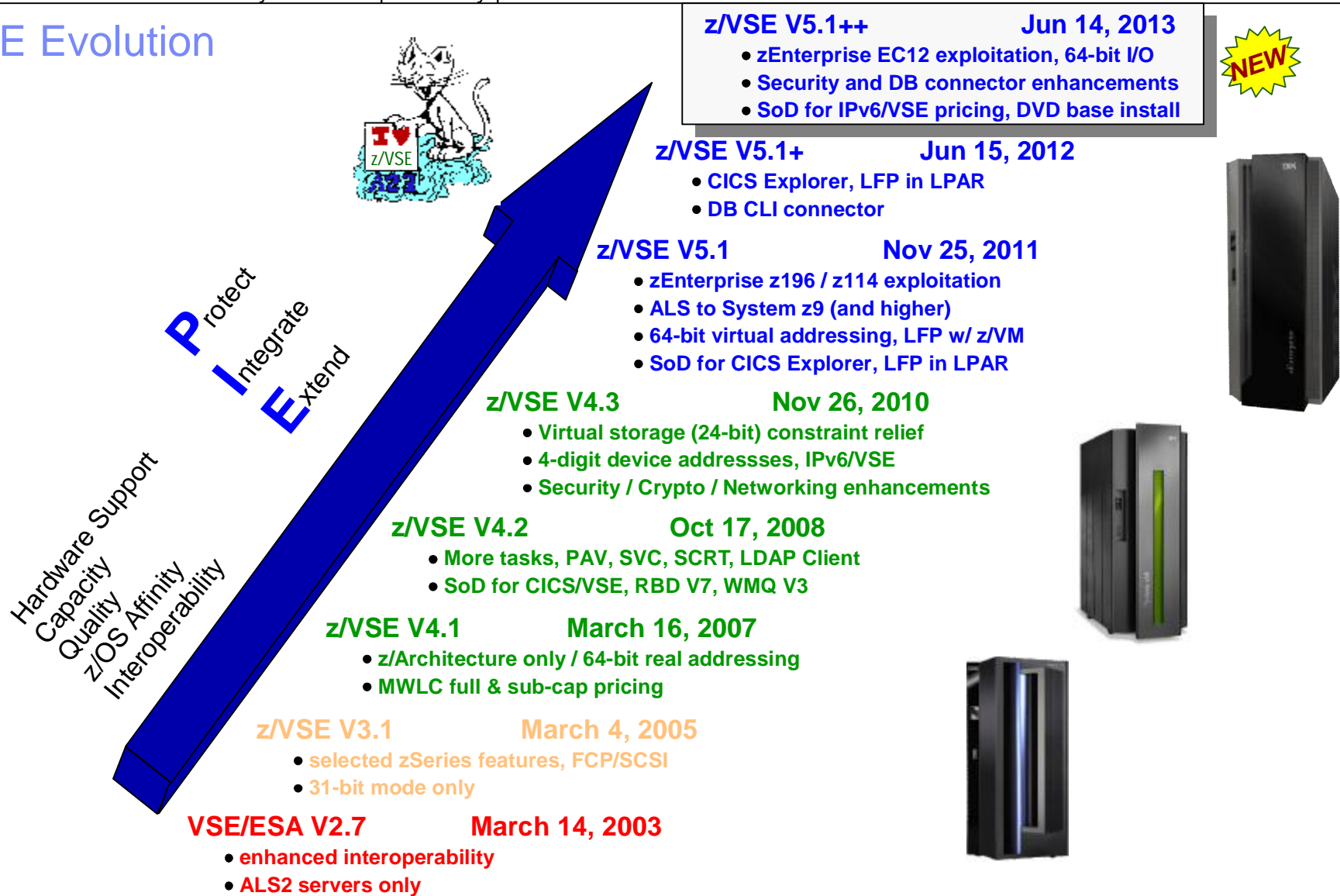
§ IFLs play an important role in VSE's strategy

§ zIIP/zAAP/ICF have no meaning to VSE



(*) The term "VSE" stands for both, VSE/ESA and z/VSE.

z/VSE Evolution



1) z/VSE V3 is 31-bit mode only. It does not implement z/Architecture, and specifically does not implement 64-bit mode capabilities. z/VSE is designed to exploit select features of IBM System z10, System z9, and zSeries hardware.
2) z/VSE V4 is designed to exploit 64-bit real memory addressing, but will not support 64-bit virtual memory addressing

* IPv6/VSE is a registered trademark of Barnard Software, Inc.



z/VSE Support Status (as of June 2013)

| VSE Version and Release | Marketed | Supported | End of Support |
|---|----------|-----------|----------------|
| z/VSE V5.1 | a | a | tbd |
| z/VSE V4.3 | r | a | 05/31/2014 |
| z/VSE V4.2 incl CICS/VSE V2.7, DL/I V1.11 | r | r | 10/31/2012 |
| z/VSE V4.1 ²⁾ | r | r | 04/30/2011 |
| z/VSE V3.1 ¹⁾ | r | r | 07/31/2009 |
| VSE/ESA V2.7 | r | r | 02/28/2007 |

Service Extension Contracts available on request

¹⁾ z/VSE V3 is 31-bit mode only. It does not implement z/Architecture, and specifically does not implement 64-bit mode capabilities. z/VSE is designed to exploit select features of IBM System z10, System z9, and zSeries hardware.

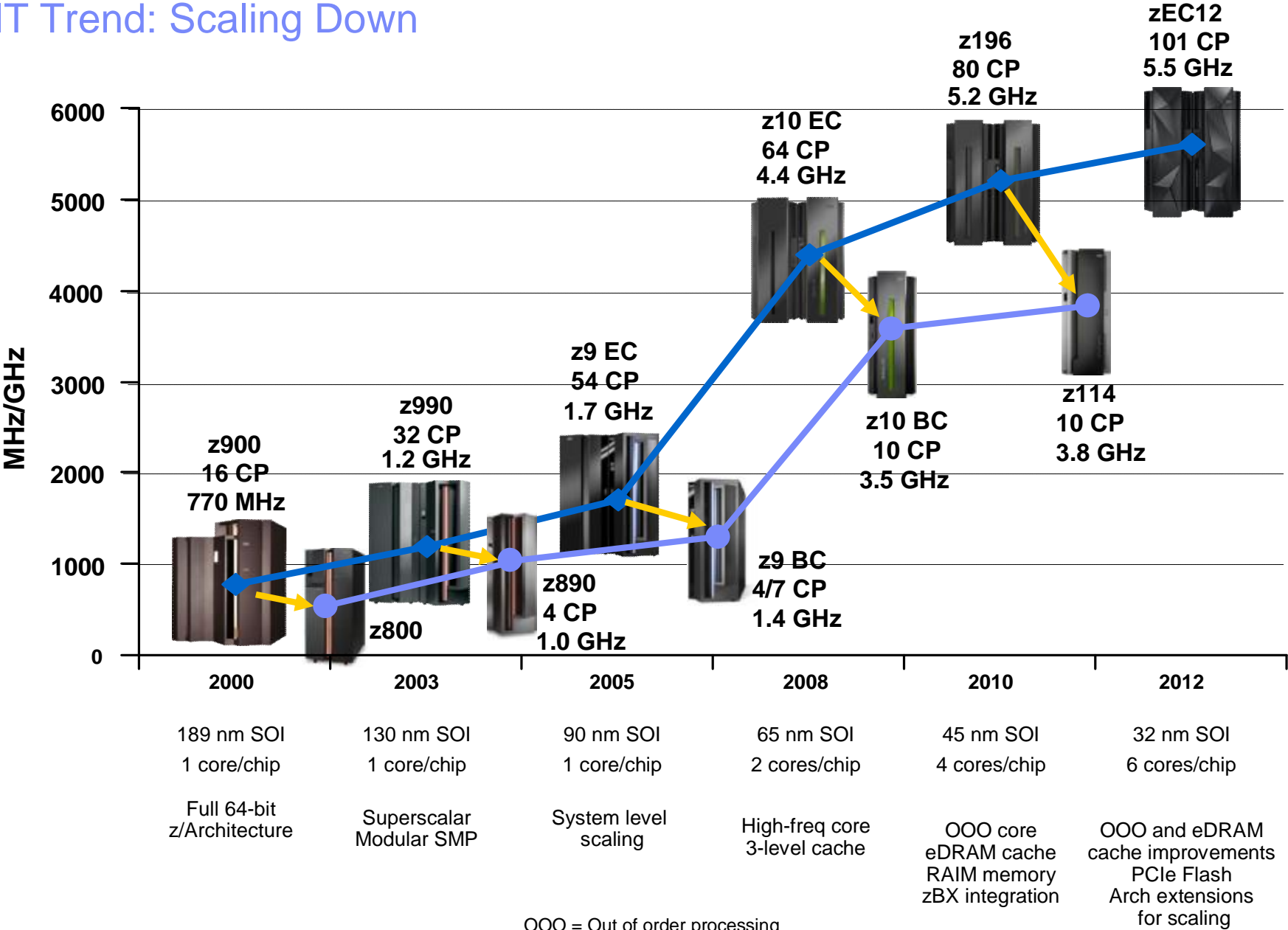
²⁾ z/VSE V4 is designed to exploit 64-bit real memory addressing, but will not support 64-bit virtual memory addressing

z/VSE Support for IBM Mainframe Servers (as of June 2013)

| IBM Servers | z/VSE V5.1 | z/VSE V4.3 | z/VSE V4.2 (out of service) | z/VSE V4.1 (out of service) |
|--|-------------------|-------------------|------------------------------------|------------------------------------|
| IBM zEnterprise EC12 | a | a | a | r |
| IBM zEnterprise 196 & 114 | a | a | a | a |
| IBM System z10 EC & z10 BC | a | a | a | a |
| IBM System z9 EC & z9 BC | a | a | a | a |
| IBM eServer zSeries 990 & 890 | r | a | a | a |
| IBM eServer zSeries 900 & 800 | r | a | a | a |



IT Trend: Scaling Down



z/VSE Support of IBM zEnterprise EC12 (zEC12)

§ z/VSE Release Support

- z/VSE supports the zEC12 with z/VSE V4.2, V4.3 and V5.1
 - No PTFs are required to run z/VSE on zEC12
 - For IOCP, EREP and HLASM PTFs, see PSP (subset 2827/ZVSE of 2827DEVICE)

§ Configurable Crypto Express4s – new with zEC12

- z/VSE toleration PTF required to use Crypto Express4s
 - Toleration PTF (DY47414) provided for z/VSE V5.1 only
- Crypto Express4s supported with existing z/VSE cryptographic functionality
 - Supported modes: (CCA) coprocessor and accelerator
 - PKCS #11 (EP11) coprocessor not supported

§ OSA-Express4s 1000BASE-T – new with zEC12

- No z/VSE PTF required
- 1000BASE-T supported with existing z/VSE functionality

§ SCRT – Subcapacity Pricing

- z/VSE 4.2 requires DY47111 (same as for z196, z114)



z/VSE Support of IBM zEnterprise 114

§ z114 is supported by z/VSE V4.2, z/VSE V4.3 and z/VSE V5.1

- Refer to z/VSE Preventive Service Planning (PSP) buckets
- z/VSE PTFs are required for subcapacity pricing customers and QVS (Query Virtual Server)

§ Features / Functions

- **Fast Path to Linux on System z in a z/VM-mode LPAR**
 - also available on z10 BC/EC
- **Fast Path to Linux on System z in an LPAR environment**
 - exclusively on zEnterprise
- **z/VSE z/VM IP Assist (VIA)**
 - exclusively on zEnterprise
- **Dynamic add of logical CPs**
 - also available on z10 BC/EC
- **Large page (1 MB frames) support for data spaces**
 - also available on z10 BC/EC
- **Dynamic add / remove of cryptographic processors**
 - also available on z10 BC/EC
- **Crypto Adjunct Processor (AP) Queue interrupt facility**
 - also available on z10 BC/EC
- **4096-bit RSA key support with configurable Crypto Express3**
 - also available on z10 BC/EC



§ zBX environment

- **z/VSE V5 provides native Intra Ensemble Data Network (IEDN) support**
 - z/VSE V4 can participate in an IEDN data network using z/VM's V6 VSWITCH support

Agenda

§ z/VSE Status & Support

→ § z/VSE Strategy

§ z/VSE Modernization Options

§ z/VSE Reference Customers & Learning

§ z/VSE Functional Enhancements

- z/VSE V5.1
- z/VSE V5.1+
- z/VSE V5.1++

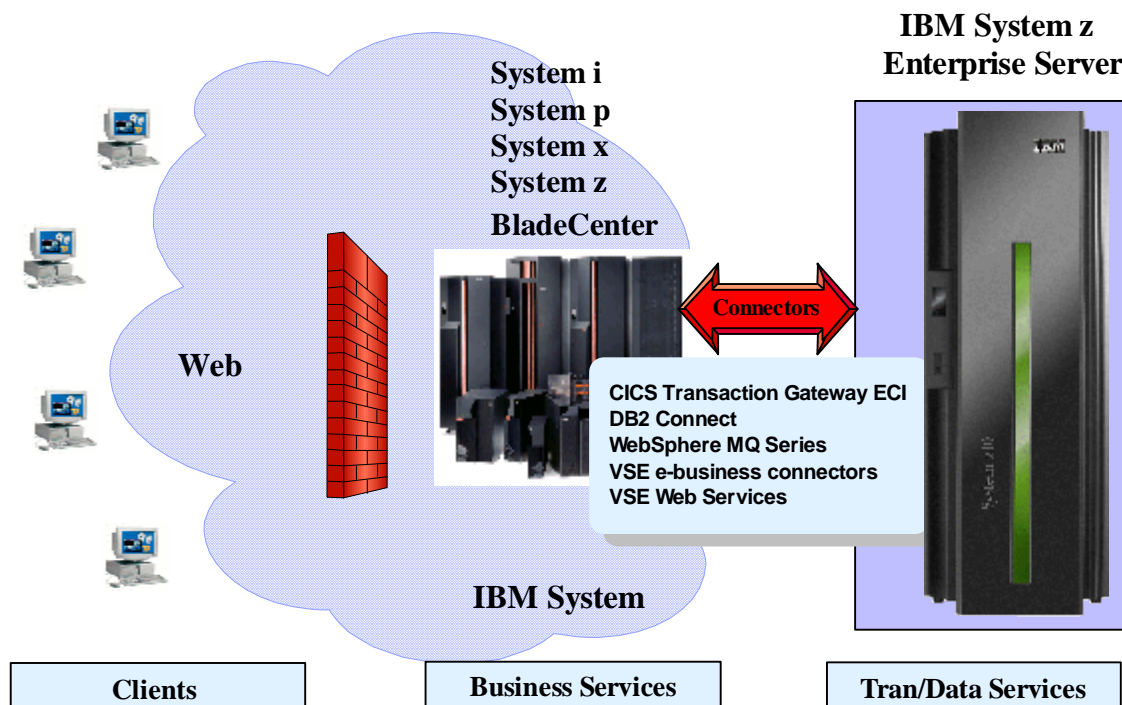
§ Wrap-up



z/VSE Strategy - Invented in Year 2000

alias

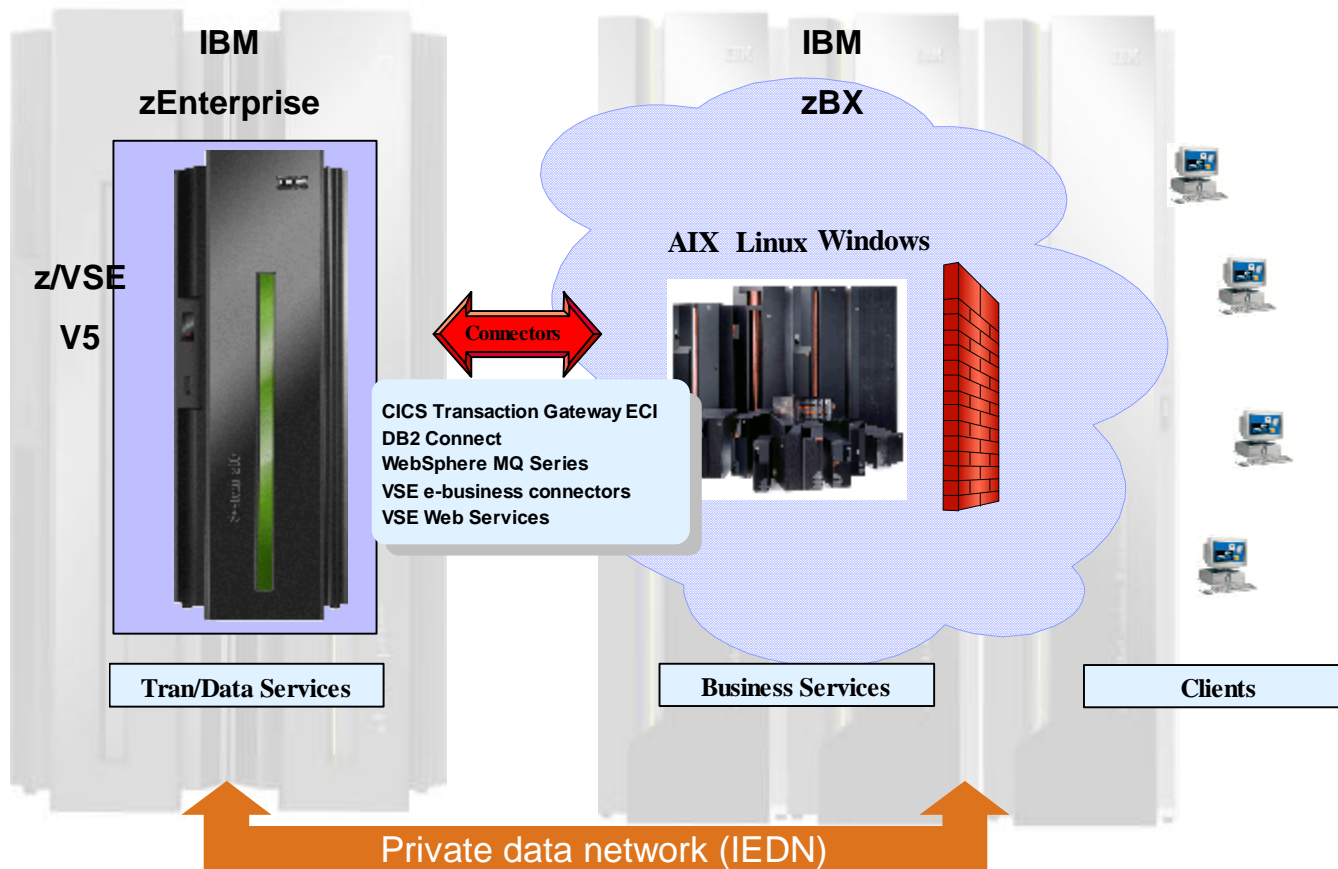
- § 3-tier Strategy
- § **Hybrid Strategy**
- § Connector Strategy
- § Migration Strategy
- § Coexistence Strategy
- § Linux Surround Strategy
- § **PIE Strategy**



- P**rotect existing z/VSE investments
- I**ntegrate using middleware and z/VSE connectors
- E**xtend with another platform to access new applications & solutions

z/VSE V5 Strategy with zEnterprise - More options, highly integrated

- alias**
- § 3-tier Strategy
 - § **Hybrid Strategy**
 - § Connector Strategy
 - § Migration Strategy
 - § Coexistence Strategy
 - § Linux Surround Strategy
 - § **PIE Strategy**

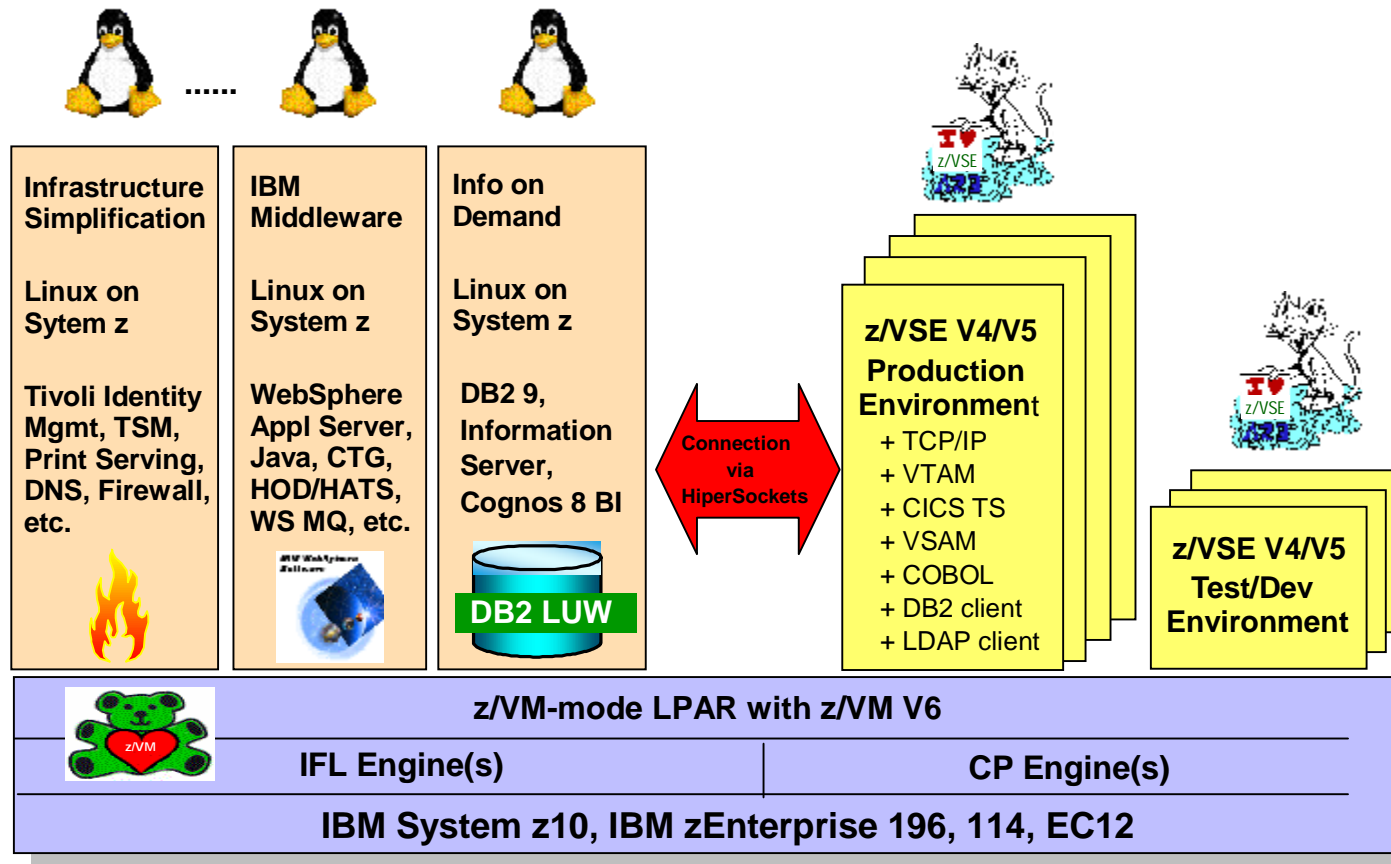


- P**rotect existing z/VSE investments
- I**ntegrate using middleware and z/VSE connectors
- E**xtend with zBX or with Linux on z to access new applications & solutions

z/VSE Strategy w/ Linux on System z

Hybrid Environment leveraging z/VSE, z/VM, and Linux on System z

- P**rotect existing VSE investments
- I**ntegrate using middleware and VSE connectors
- E**xtend with Linux on IBM System z technology & solutions



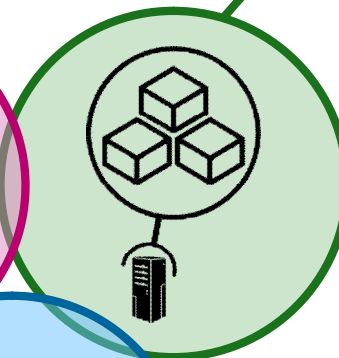
Leveraging the successful z/VSE Strategy to build a Smarter Planet

Protect existing investments

Legacy applications and data on z/VSE

Key Capabilities

- 64-bit virtual addressing to reduce memory constraints through exploitation of data in memory
- Exploitation of selected zEnterprise functions and features as well as IBM System Storage options



Integrate with other Systems

Connect to, and run backend System z applications

Build mobile applications

Key Capabilities

- z/VSE Connectors to Java capable clients, SOAP (Web Service), DRDA
- New DBCLI API for database connections
- Linux Fast Path

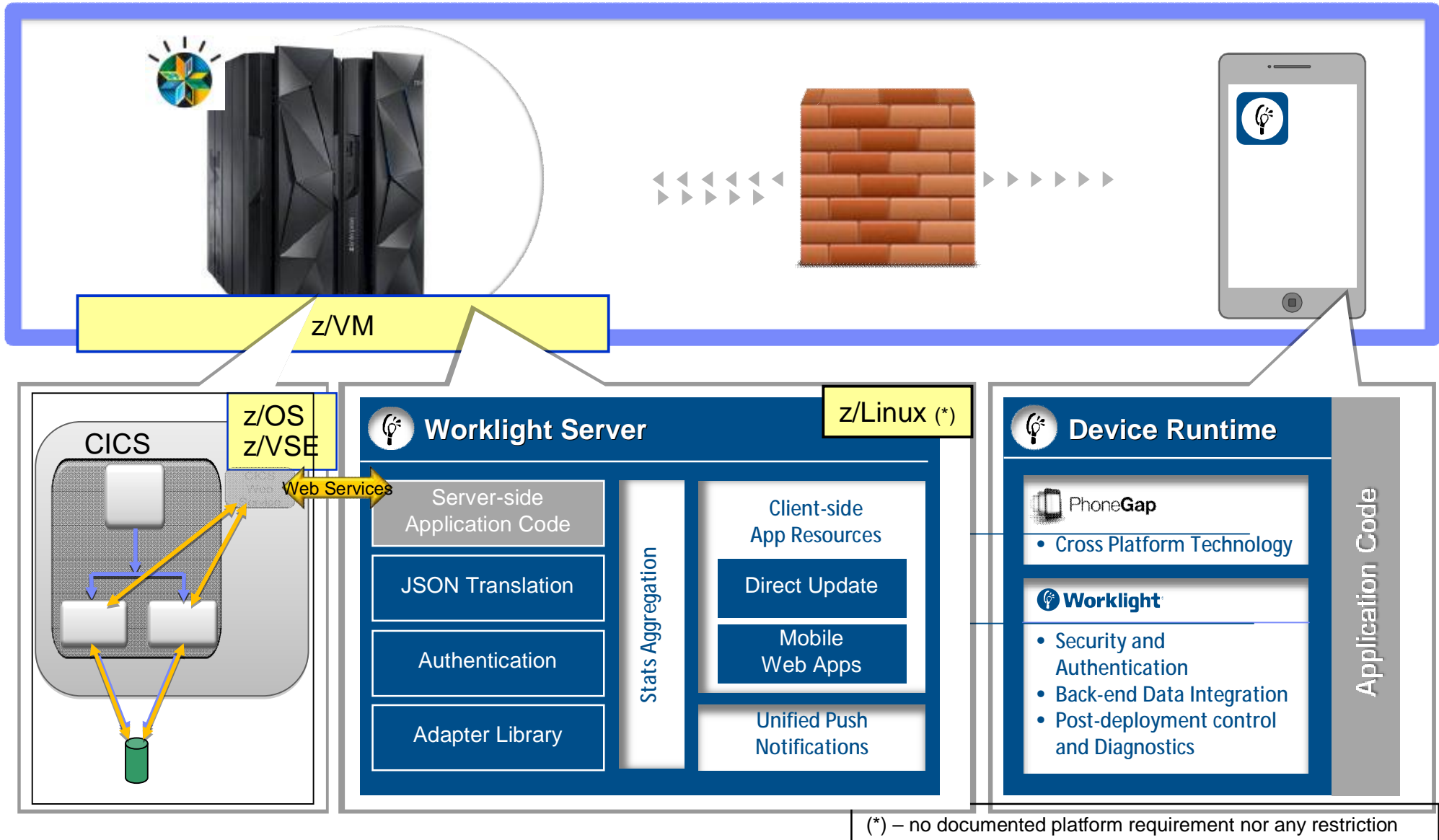
Extend for new workloads

Use the combination of Linux on System z and z/VSE

Key Capabilities

- Leverage Linux on System z for
 - Information on demand
 - IBM middleware
 - Infrastructure simplification

IBM Worklight – System z Implementation Topology



Agenda

§ **z/VSE Status & Support**

§ **z/VSE Strategy**

→ § **z/VSE Modernization Options**

§ **z/VSE Reference Customers & Learning**

§ **z/VSE Functional Enhancements**

- z/VSE V5.1
- z/VSE V5.1+
- z/VSE V5.1++

§ **Wrap-up**

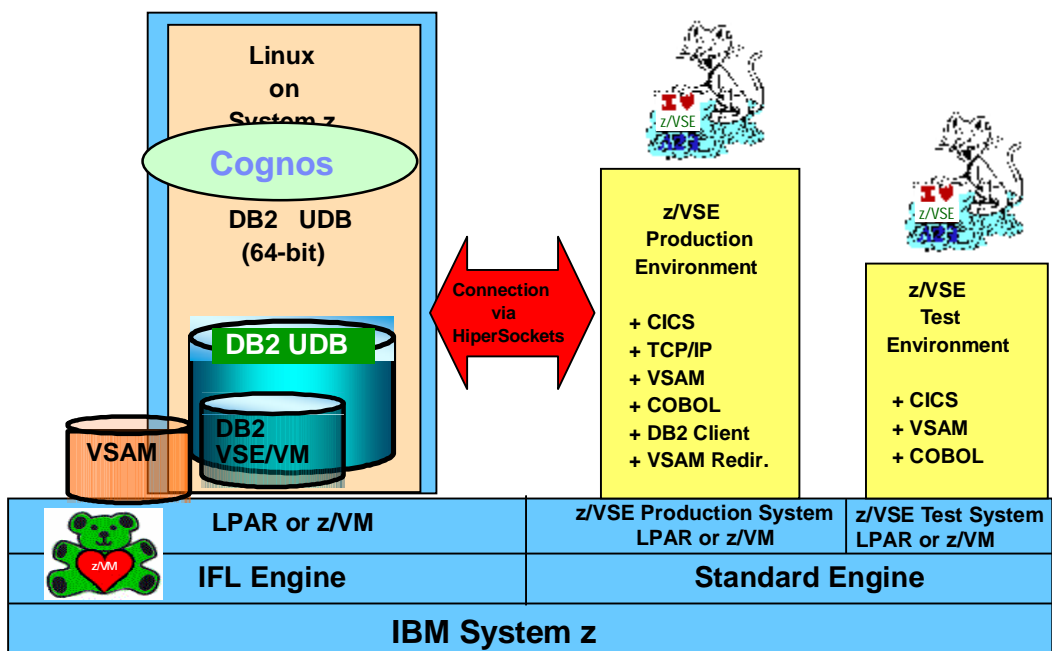


z/VSE SOA and Interoperability

| Connector Functions | z/VSE V5.1 | z/VSE V4.3 | z/VSE V4.2 | z/VSE V4.1 |
|--|------------|------------|------------|------------|
| z/VSE Connectors (no additional charge) | | | | |
| VSAM, POWER, Librarian, ICCF lib, console | Yes | Yes | Yes | Yes |
| VSAM Redirector | Yes | Yes | Yes | Yes |
| SOA Web Services, i.e. SOAP and XML | Yes | Yes | Yes | Yes |
| z/VSE Script and DL/1 | Yes | Yes | Yes | Yes |
| DB2 Stored Procedures for VSAM and DL/1 | Yes | Yes | Yes | Yes |
| VTAPE interface to IBM Tivoli Storage Manager (TSM) | Yes | Yes | Yes | Yes |
| LDAP client (LDAP server on another platform required) | Yes | Yes | Yes | |
| SNMP agent | Yes | Yes | | |
| Linux Fast Path from z/VSE to Linux TCP/IP in z/VM-mode LPAR | Yes | Yes | | |
| z/VSE z/VM IP Assist (VIA) | Yes | | | |
| GDPS client | Yes | | | |
| Linux Fast Path via zEnterprise HiperSockets Completion Queues | Yes | | | |
| DBCLI connector | Yes | | | |
| IBM Middleware (priced) | | | | |
| CICS Transaction Gateway ECI | Yes | Yes | Yes | Yes |
| Host on Demand / Host Application Transformation | Yes | Yes | Yes | Yes |
| DB2 Connect / DB2 UDB (DB2 Server for z/VSE V7.5 Client) | Yes | Yes | Yes | Yes |
| WebSphere MQ (z/VSE Client no charge) | Yes | Yes | Yes | Yes |

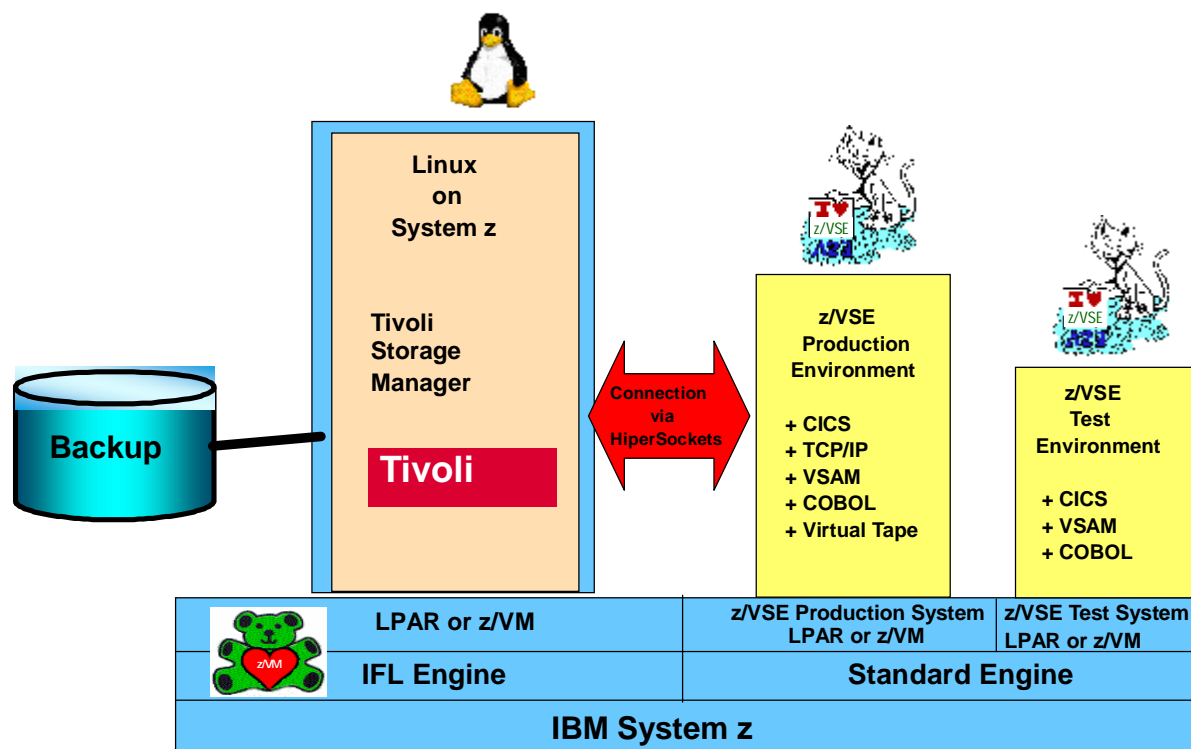
The No1 scenario, worldwide: DB2 LUW for z/VSE Customers

Data consolidation & data warehouse solutions with DB2 UDB on System z



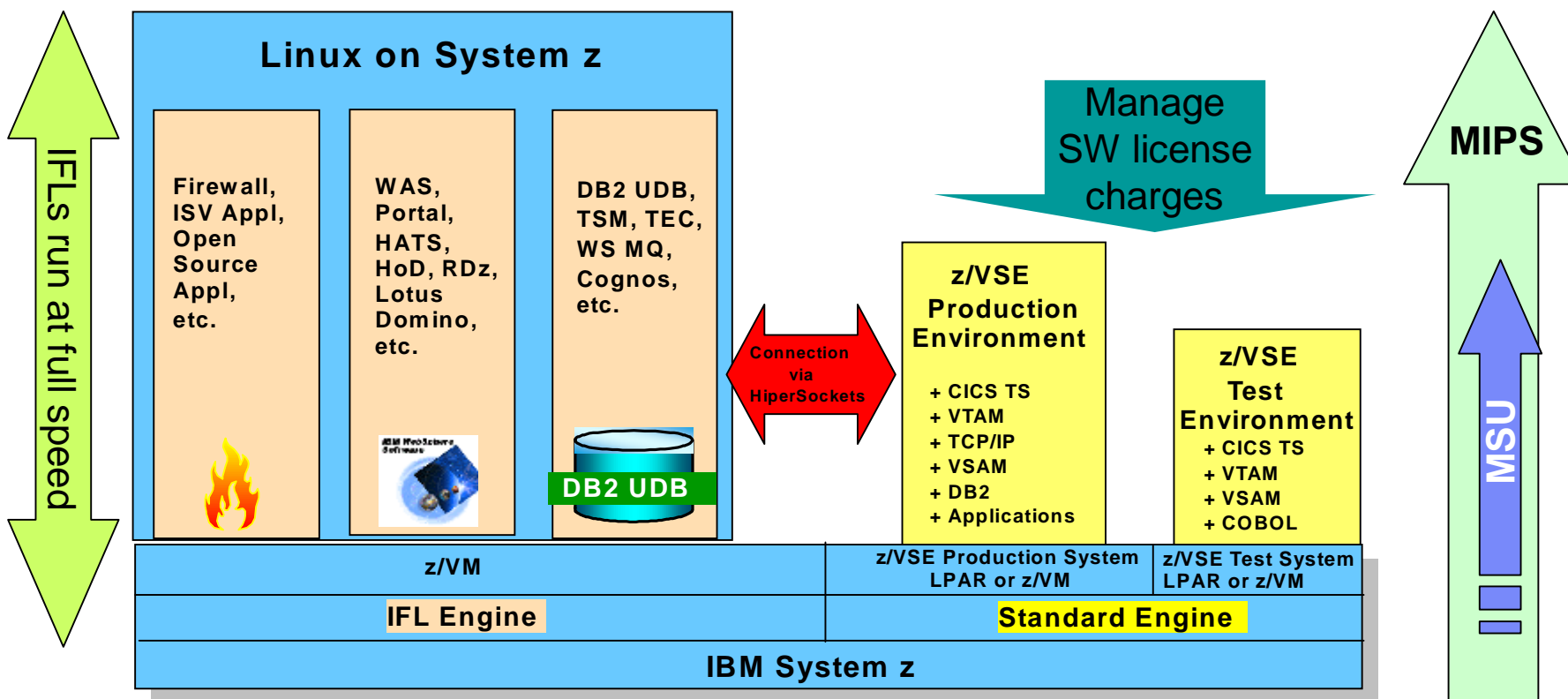
Evolving usage scenario: Backup / Restore Concept for z/VSE

Integrate z/VSE with TSM on Linux on System z

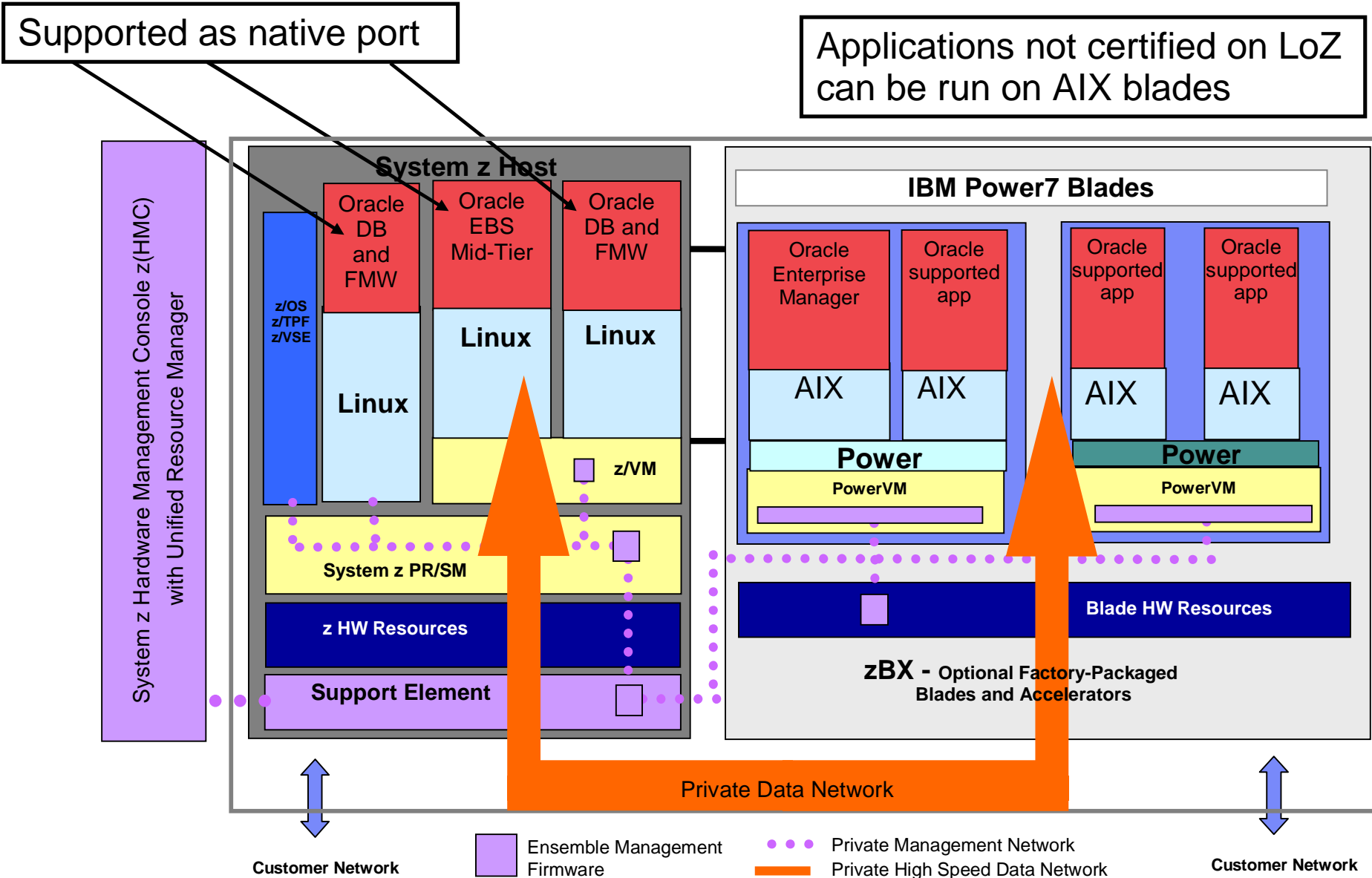


Combine the Scenarios, Manage Software Cost

- P**rotect existing z/VSE investments
- I**ntegrate using middleware and z/VSE connectors
- E**xtend with Linux technology and new solutions



Additional Options with zEnterprise (Example: Oracle e-Business Suite)



Agenda

§ **z/VSE Status & Support**

§ **z/VSE Strategy**

§ **z/VSE Modernization Options**

→ § **z/VSE Reference Customers & Learning**

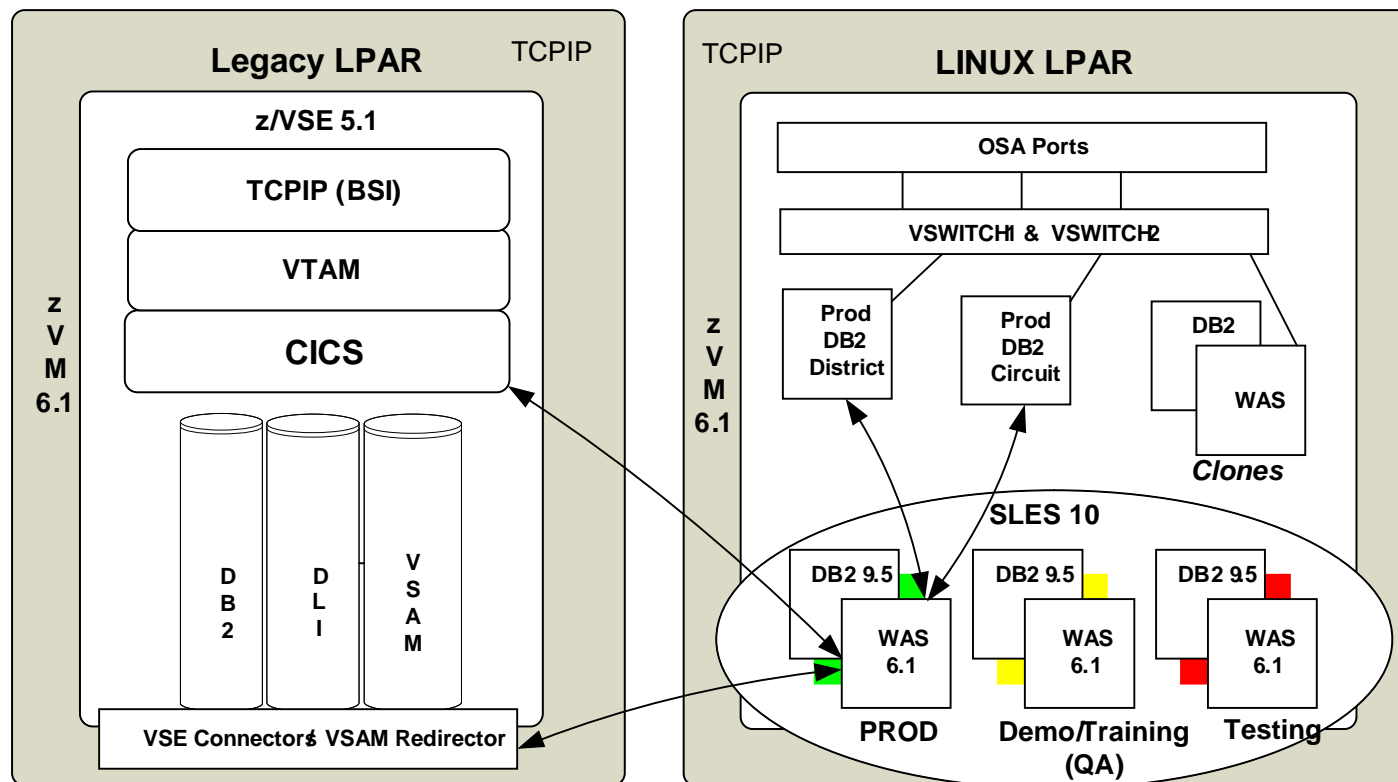
§ **z/VSE Functional Enhancements**

- z/VSE V5.1
- z/VSE V5.1+
- z/VSE V5.1++

§ **Wrap-up**



Customer Example: Supreme Court of Virginia



- 1 + 1 z10 BC L02
- 2 + 2 CPs
- 5 + 5 IFLs
- 112 + 112 GB memory
- 2 + 2 z/VM V6.1 LPARs
- 8 + 4 z/VSE V5.1 guests
- 73 + 24 SLES 10 SP2 guests
- WAS V6.1, DB2 V8.2, DB2 V9

§ z10 BC L02 for Court System (internal)

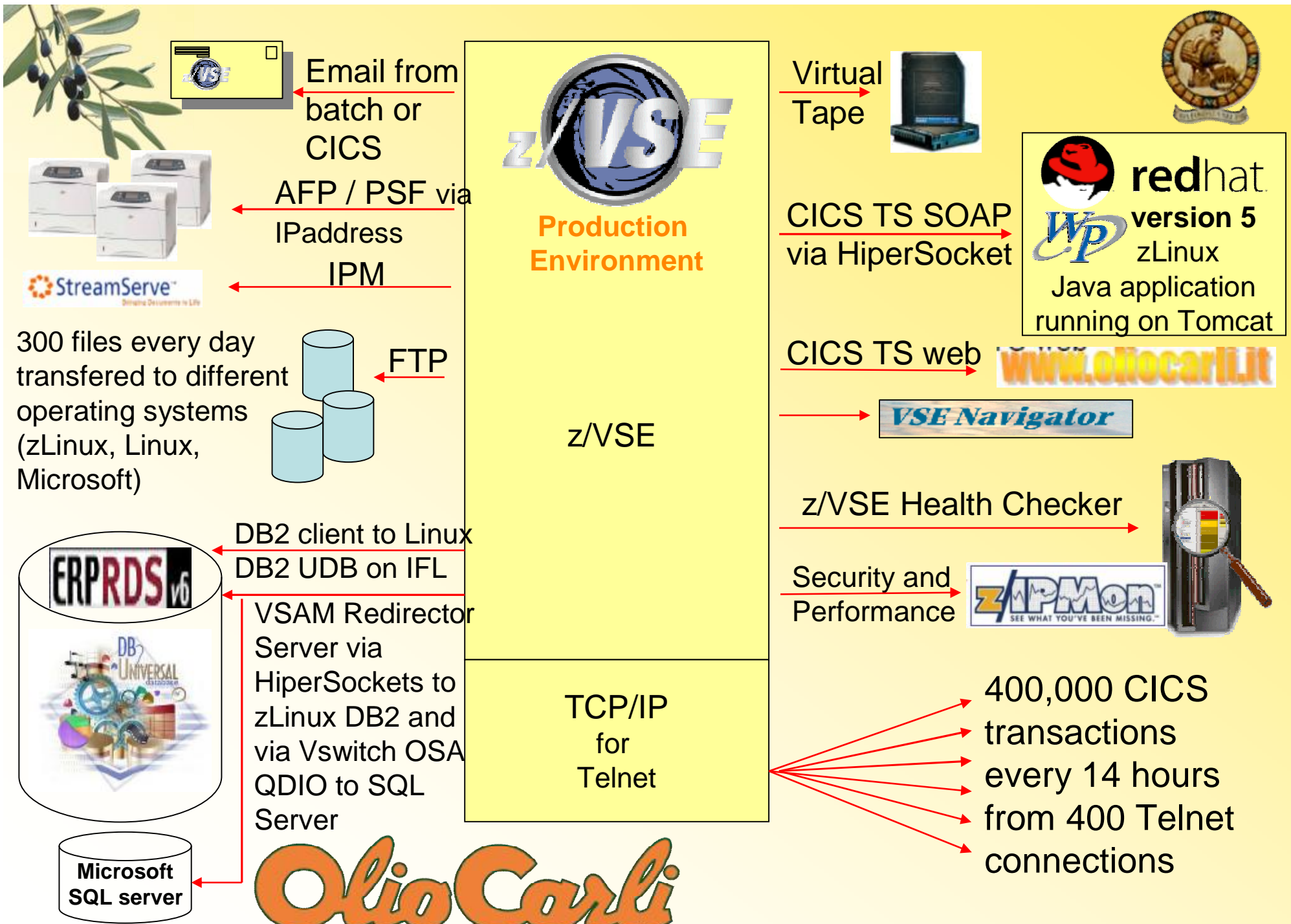
- Serves 325 courts, 5.000+ users, 4.2 million new cases in 2009
- Integrating z/VSE, DB2/UDB and WebSphere applications
- eMagistrate* system serves 125 locations, 2.800 trans per day

*2007 ComputerWorld Honors Program Laureate

§ z10 BC L02 for Internet

- eCommerce application integrating z/VSE and WebSphere apps





Olio Carli

the leading producer of premium olive oil sold directly to consumers

400,000 CICS transactions every 14 hours from 400 Telnet connections

Peter Hahn

IBM Systems enrich performance, availability and flexibility

Business challenge:

Peter Hahn, a European clothier, was growing rapidly and needed to improve data availability. With call centers operating 24/7, they could not accommodate any downtime. They also faced challenges with database performance and downtime required for backups.

Solution:

With the help of IBM and IBM Premier Business Partner COMPAREX, Peter Hahn upgraded their legacy IBM eServer™ zSeries® mainframe to IBM System z9. Peter Hahn then migrated their IBM DB2 database with IBM z/VSE® applications to a Linux environment. To enable automated backups, they installed IBM System Storage DS8100, connected to the company network by IBM System Storage SAN Volume Controller.

Benefits:

- § Improves availability and performance of the IT environment
- § Provides flexibility and capacity for the DB2 database
- § Reduces risk by enabling automated backups with zero downtime

“The change was like switching to a Porsche without having to modify our applications for this purpose.”

– Holger Schönenmann, department manager of the computer center at Peter Hahn

Solution components:

- § IBM System z9 with Integrated Facility for Linux
- § IBM System Storage DS8100
- § IBM SAN Volume Controller
- § IBM DB2

AutoData Norge AS

Success Story



AutoData Norge AS

AutoData Norge AS runs SUSE® Linux Enterprise Server for System z* alongside z/VSE on an IBM* zEnterprise* z114 mainframe. The SUSE operating system provides a lower-cost and more flexible platform for creating new web-based applications, helping AutoData to expand its offerings in an efficient manner.

Automotive Spare Parts Distributor AutoData Norge AS added **SUSE® Linux Enterprise Server** to existing IBM® mainframe running **z/VSE®** for **IBM System z®**

Reliable and flexible environment for serving customers

Reduced software maintenance cost by running new workloads on an **I**ntegrated **F**acility for **L**inux while keeping all licensed MIPS available for z/VSE

Combined

Reliability and long standing experience on z/VSE with **Simplicity, support and agility** of Linux on System z

“Everything we do is driven by our customers, and SUSE Linux Enterprise Server for System z allows us to be much more responsive to their needs..” Stein Sandvold Chief Operating Officer AutoData Norge AS

www.suse.com/success/stories/autodata-norge-as.html

NWK – Converted all z/VSE Applications onto SLES on System z



Success Story
Enterprise Linux Servers

NWK

Seeking to boost the flexibility and reliability of its mainframe environment, agricultural service provider NWK chose to migrate its entire z/VSE mainframe workload to SUSE Linux Enterprise Server for System z. The company is using one IFL on its new IBM zEnterprise 114 server, improving processing speeds by more than 70 percent compared with the old platform and gaining a stable, reliable platform for running its most important financial applications and business systems.

Overview
NWK Limited is a leading agricultural service provider, operating in the North Western Province of South Africa since 1909. The organisation provides both independent farmers and large-scale producers with a variety of products and services, as well as expert advice and financing. NWK employs more than 2,000 people and reported revenue of more than \$200 million in 2012. The company's activities include retail trading, grain storage and marketing, the production of day-old broilers, feed production, transport and food processing.

spectrum of processes from credit control to general ledger.

For the past 18 years, NWK has trusted in the reliability and stability of the IBM mainframe platform to support these vital business systems. The company previously ran all of its applications under the IBM z/VSE operating system, but a growing need for greater flexibility and support prompted the IT team to consider alternative options.

Solution
Linux quickly emerged as the front runner in NWK's search for a new operating system, its flexibility giving the company considerable scope for embracing a more open infrastructure model.

After evaluating the different distributions of Linux available on the mainframe, NWK chose to deploy SUSE Linux Enterprise Server for IBM System z—a decision that was strongly guided by the platform's reliability and the close collaboration between SUSE and IBM.



NWK at a glance:
A leading supplier of agricultural products and services, NWK has been operating in the North West Province of South Africa for more than 100 years

- Industry and Location**
Agriculture, Lichtenburg, South Africa
- Products and Services**
SUSE Linux Enterprise Server for System z
- Results**
 - Improves processing speeds and reduces database backup window by more than five times
 - Offers strong reliability for key financial applications and business systems
 - Supports a more open and flexible infrastructure model



After evaluating the different distributions of Linux[®] available on the mainframe, NWK chose to deploy SUSE Linux Enterprise Server for IBM System z[®]—a decision that was strongly guided by the platform's reliability and the close collaboration between SUSE and IBM.

“We have been running SUSE Linux Enterprise Server on the IBM zEnterprise[®] 114 (z114) for a few months now and everything has been operating very smoothly,” says Eddie Leighton.

“We support around 450 users on one IFL with an average CPU usage of 60 to 70 percent, and so far performance has been excellent, even when running at 100 percent utilization.”

The z114 running SUSE Linux Enterprise Server for System z offers 600 MIPS versus the 172 MIPS of NWK's previous mainframe, which translates into significantly faster processing for a number of key tasks.

SUSE Linux Enterprise Server provides NWK with solid performance, and a reliable platform for running its most important workloads.

“The IBM z114 is a fantastic server and SUSE Linux Enterprise Server for System z really helps us to get the most out of it. The solution has met all of our requirements in terms of performance and stability.”

- EDDIE LEIGHTON, Technology Manager, NWK

www.suse.com/success/stories/nwk.html

z/VSE and z/VM-Linux Customer Conferences in 2013

§ **WAVV in Covington (Kentucky),
April 7-10, 2013**



§ **German GSE in Leipzig (Germany),
April 22-24, 2013**

§ **IBM System z Technical University in Munich (Germany),
June 10-14, 2013**



§ **GSE European Working Group in Hamburg (Germany),
Sep 30 – Oct 2, 2013**



§ **IBM System z Technical University in Orlando (Florida),
Oct 21-25, 2013**

z/VSE Live Virtual Classes (Webcasts)

§ June 2013

- z/VSE Security Enhancements

§ April 2013

- Important Update on z/VSE Enhancements

§ March 2013

- z/VSE Release Migration Considerations - Part 2

§ February 2013

- z/VSE Release Migration Considerations - Part 1

§ December 2012

- System z Hardware Exploitation in z/VSE

§ October 2012

- VSE/POWER – all the News since z/VSE 4.2

§ September 2012

- Securing Data Transfers using IPv6/VSE

§ July 2012

- The New z/VSE Database Connector (DBCLI)

§ May 2012

- IPv6 in z/VSE

§ March 2012

- Monitoring Principles and z/VSE Monitoring Options

Replays available!

Dates and replays @

<http://www.ibm.com/zvse/education/>



Be Social with z/VSE



z/VSE Homepage:

www.ibm.com/zVSE

 **Twitter**

www.twitter.com/IBMzVSE

 **Ingolf's z/VSE Blog**

www.ibm.com/developerworks/mydeveloperworks/blogs/vse/

Join System z Advocates (Subgroup z/VSE)

www.linkedin.com



Read at the IBMs System z Blog

www-304.ibm.com/connections/blogs/systemz/

Connect at Facebook

www.facebook.com/IBMsSystemz

Watch on YouTube

www.youtube.com/user/IBMSystemZ

z/VSE Quick Reference App for Android – Available as Beta now!

<ftp://public.dhe.ibm.com/eserver/zseries/zos/vse/download/zVSEQuickReferenceBeta.apk>

| z/VSE z/VSE Quick Reference | z/VSE News | z/VSE Education |
|---|--|--|
| <p>z/VSE is an Operating System running on IBM System z. It is designed to help clients protect their investments into VSE applications and data. It addresses requirements for growing z/VSE workloads and consolidation of z/VSE systems, exploiting innovative IBM zEnterprise 196, 114 and IBM System Storage technology. z/VSE focuses on scalability, security, and hybrid solutions including Linux on System z.</p> | <p>2013/4/2 Announcement - IBM z/VSE V5.1 - Additional enhancements available</p> <p>2013/2/27 z/VSE 5.1.1 RSL updated to the Feb 21, 2013 level and z/VSE 4.3.1 RSL updated to the Feb 27, 2013 level.</p> <p>2013/2/5 Effective May 31, 2014, z/VSE V4.3 will be withdrawn from service.</p> <p>2012/11/1 z/VSE V4.2 end of service</p> <p>2012/8/28 Announcing the IBM zEnterprise EC12 (zEC12)</p> <p>2012/6/15 z/VSE V5.1.1 is now available</p> <p>2012/4/3 Announcement - IBM z/VSE V5.1 - Additional enhancements available</p> <p>2011/11/25 z/VSE V5.1 is now available</p> <p>2011/10/12 Announcement: IBM z/VSE V5.1 - 64-bit virtual for future workloads</p> | <p> Important Update on z/VSE Enhancements Listen to the playback of this session</p> <p> z/VSE Release Migration Considerations - Part 2 (March 12, 2013) Listen to the playback of this session</p> <p> z/VSE Release Migration Considerations - Part 1 (February 19, 2013) Listen to the playback of this session</p> <p> System z Hardware Exploitation in z/VSE (December 11, 2012) Listen to the playback of this session</p> <p> VSE/POWER - all the news since z/VSE V4.2 (October 30, 2012) Listen to the playback of this session</p> <p> Securing Data Transfers using IPv6/VSE (September 12, 2012) Listen to the playback of this session</p> <p> The New z/VSE Database Connector (DBCLI) (July 17, 2012) Listen to the playback of this session</p> <p> IPv6 in z/VSE (May 22, 2012) Listen to the playback of this session</p> <p> Monitoring Principles & z/VSE Monitoring Options (March 22, 2012)</p> |
| <p>What's new</p> | | |
| <p>Events</p> | | |
| <p>Education</p> | | |
| <p>Documentation</p> | | |
| <p>Communities</p> | | |

Agenda

§ z/VSE Status & Support

§ z/VSE Strategy

§ z/VSE Modernization Options

§ z/VSE Reference Customers & Learning

→ § z/VSE Functional Enhancements

- z/VSE V5.1
- z/VSE V5.1+
- z/VSE V5.1++

§ Wrap-up



z/VSE V5.1 - General Availability since Nov-25-2011

§ Introduction of an Architectural Level Set (ALS) that requires System z9 (or later)

- z/VSE V5 will run on System z9 BC/EC, z10 EC/BC, zEnterprise z196/z114, and zEC12

§ 64-bit virtual addressing for growing / future workloads

- Keep ‘more data in memory’ to benefit from increased processor storage
- Built upon 64-bit real addressing, compatible API with z/OS

§ IBM zEnterprise exploitation

- Support Static Power Save Mode for MWLC clients with subcapacity option on z196 and zEC12
- 4096-bit RSA keys with Crypto Express3 for enhanced security
- Support of OSA-Express for zBX (CHPID OSX) to participate in an Intra Ensemble Data Network (IEDN)
- z/VSE z/VM IP Assist (VIA)

§ Exploitation of IBM System Storage options

- Copy Export function of TS7700 Virtualization Engine for disaster recovery
- IBM Storwize V7000 Midrange Disk System

§ Networking enhancements

- IPv6 support added to Linux Fast Path connector
- GDPS client for high availability in z/VSE

§ Statement of Direction

- CICS Explorer capabilities for CICS TS for VSE/ESA to deliver additional value
- Allow the Linux Fast Path function to be used in an LPAR environment



z/VSE V5.1+ aka V5.1.1 - General Availability since June-15-2012

§ Support IBM CICS Explorer – the new face of CICS Transaction Server

- Add value to CICS TS for VSE/ESA
- New systems management framework for CICS TS (consists of client and server part)
- Client part of CICS Explorer common for z/OS and z/VSE, server part requires CICS TS and z/VSE V5.1
- *Fulfills SOD in z/VSE V5.1 Preview Announcement (RFA54520), 04/12/2011*

§ Fast Path to Linux on System z (LFP) in LPAR

- Allows TCP/IP applications to communicate with TCP/IP stack on Linux w/o using a TCP/IP stack on z/VSE
- LFP in a z/VM guest environment available since z/VSE V4.3 – now LPAR support is added
- LFP in LPAR requires HiperSockets Completion Queue function of zEnterprise
- *Fulfills SOD in zEnterprise Announcement (RFA54727), 07/12/2011*
- *Fulfills SOD in z/VSE V5.1 Announcement (RFA55492), 10/12/2011*

§ z/VSE database connector for z/VSE applications

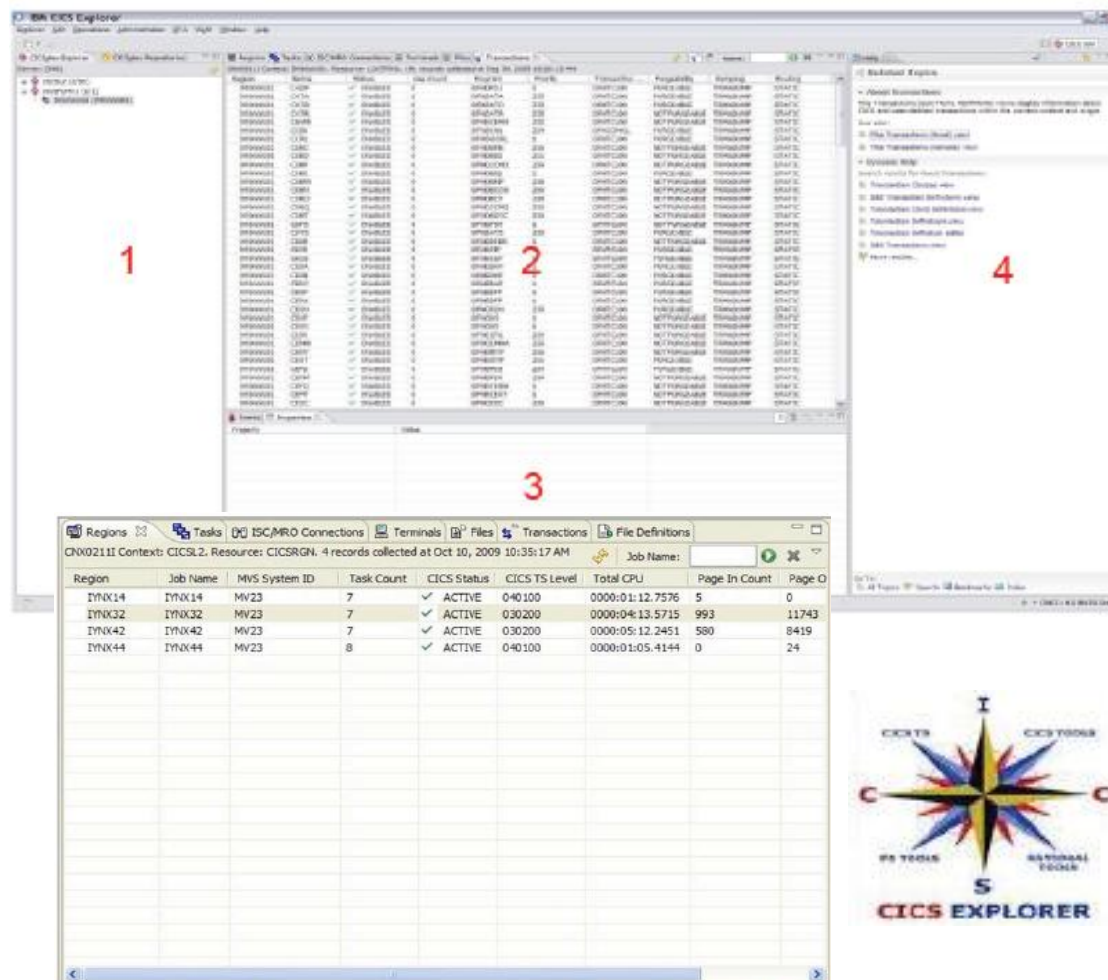
- Allows to utilize a new Call Level Interface (CLI) to advanced database functions
- Flexibility to use a database server on a platform other than z/VSE (for example in a zBX environment)

z/VSE support for IBM CICS Explorer

The new face of CICS Transaction Server for VSE/ESA

CICS Explorer

- § New systems management framework for CICS TS
- § Consists of client and server part
- § Based on the Eclipse Rich Client Platform (RCP)
- § Provides integration platform
- § Scalable and intuitive way to monitor CICS systems
- § Can be extended via plug-ins
- § Client part of CICS Explorer common for z/OS and z/VSE
- § Server part requires CICS TS and z/VSE V5.1



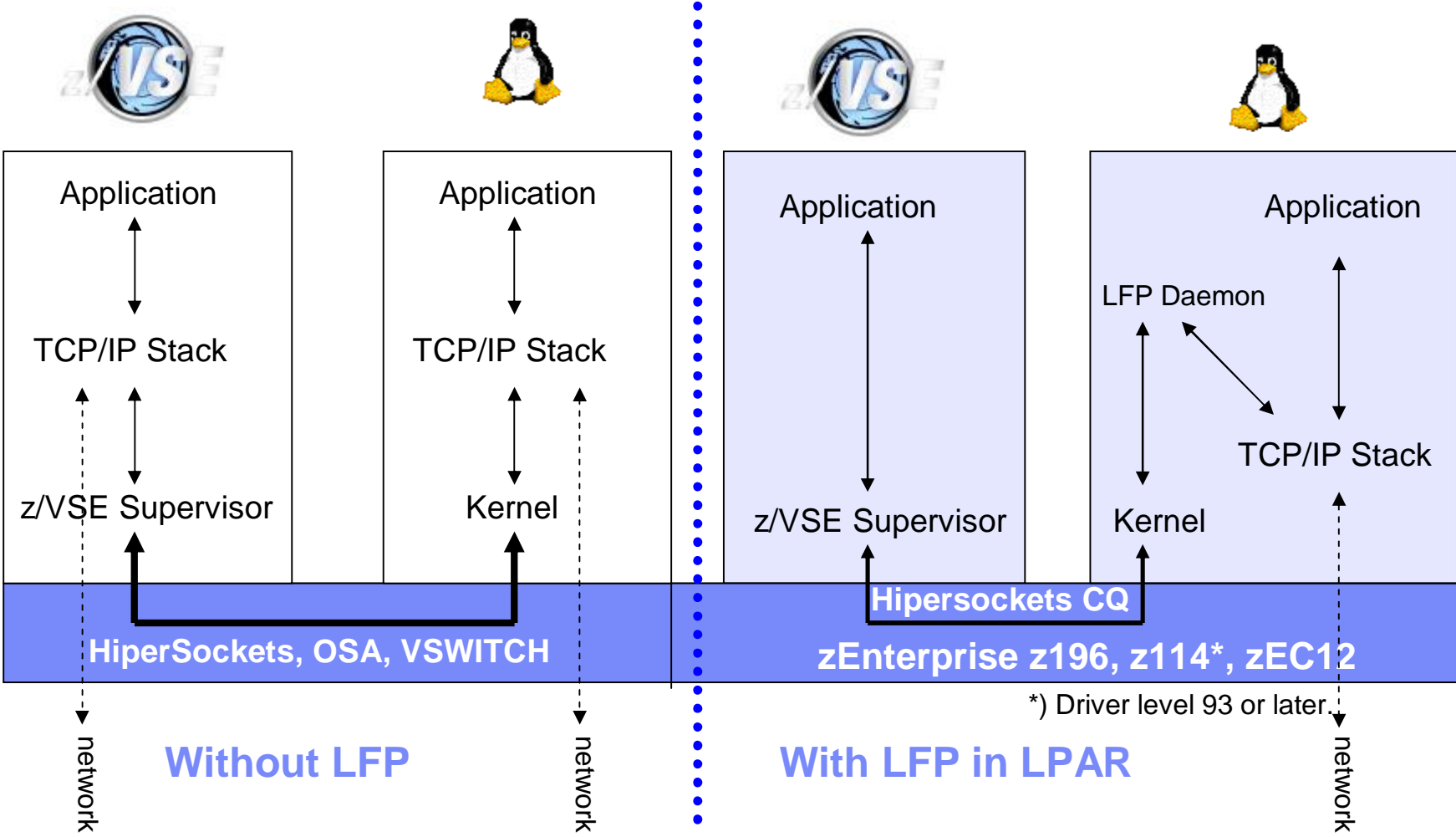
Fulfills Statement of Direction:

“IBM intends to provide CICS Explorer capabilities for CICS TS for VSE/ESA, to deliver additional value.”

Linux Fast Path in an LPAR environment with z/VSE V5.1+

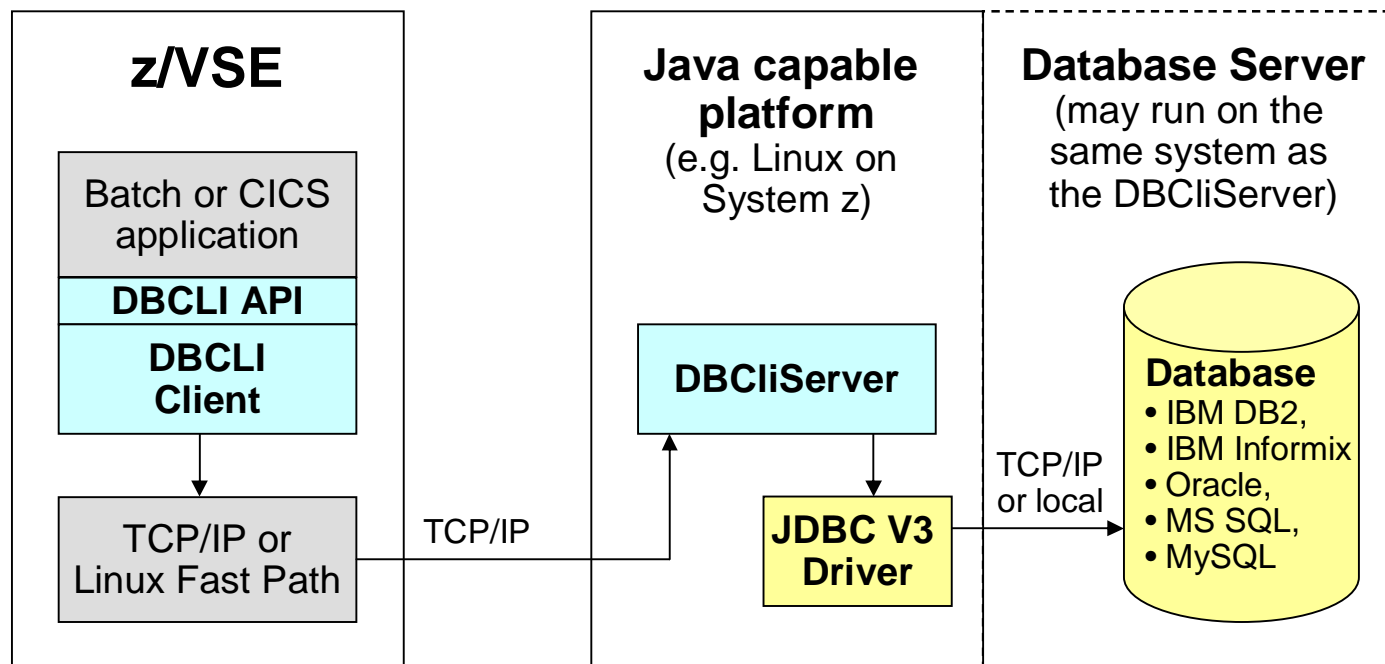
Faster communication between z/VSE and Linux applications

à Exploits the HiperSockets Completion Queue support of IBM zEnterprise



z/VSE Data Base Call Level Interface (DBCLI) with z/VSE V5.1+ z/VSE universal data base connector

- § Allows z/VSE applications to access a relational database on any suitable database server
 - IBM DB2, IBM Informix, Oracle, MS SQL Server, MySQL, etc.
 - à *The database product must provide a JDBC driver that supports JDBC V3.0 or later*
- § Utilize advanced database functions and use SQL statements
- § Flexibility to use a database server on a platform other than z/VSE
 - for example, zBX environment



z/VSE V5.1++ aka V5.1.2

Announced April-2-2013, General Availability planned for June-14-2013



§ Support innovative zEnterprise EC12 technology

- Configurable Crypto Express4S
- OSA-Express4S 1000BASE-T

§ Support enhanced IBM System Storage options

- TS1140 tape drive (with encryption capabilities)
- TS7700 Virtualization Engine Release 3.0 (includes disk-based encryption)
- DS8870 (for use with both, ECKD and FCP-attached SCSI disks)
- Storwize V7000 Release 6.4 (for use with FCP-attached SCSI disks)

§ 64-bit Input / Output processing for applications

- Enhances 64-bit virtual support by allowing to use 64-bit virtual storage also for I/O buffers
- Benefits from increased processor storage of latest zEnterprise servers

§ Extend z/VSE connectivity and networking options in heterogeneous environments

- z/VSE database connector connection pooling – performance improvement
- Configurable HiperSockets buffers – for improved throughput to Linux on System z
- IPv6/VSE: Layer-2 support for IPv4 links in addition to IPv6 links – more flexibility in mixed z/VSE, z/VM, Linux on System z configurations

§ Provide IPv6/VSE security enhancements

- Secure Sockets Layer (SSL) support – secure transmission of data to and from remote systems
- Exploits hardware-assisted encryption with System z cryptographic adapters and CPACF

Three new Statements of Direction, announced on April-2-2013

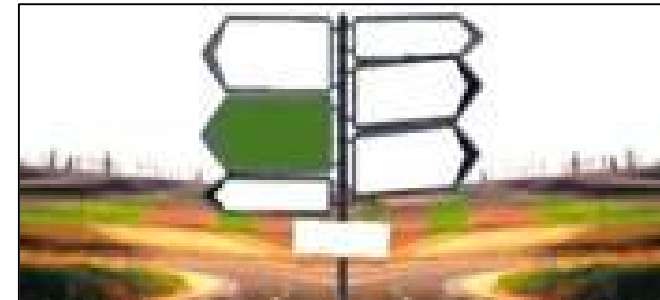


§ IBM intends to add functionality that **allows initial installation of z/VSE without requiring a physical tape.**

- Clients who use a tape for initial installation only, may no longer be forced to include a tape in the z/VSE configuration.
- With this ease of use function IBM will fulfill client requirements.


§ IBM intends in the **future to enhance IBM CICS Explorer** for IBM CICS Transaction Server for VSE/ESA to provide updates to CICS resources.

§ It is planned to **reduce** the AEWLC and MWLC **list price of IPv6/VSE V1.1.**



Note: IBM's statements regarding its plans, directions, and intent are subject to change or withdrawal without notice at IBM's sole discretion. Information regarding potential future products is intended to outline our general product direction and it should not be relied on in making a purchasing decision. The information mentioned regarding potential future products is not a commitment, promise, or legal obligation to deliver any material, code, or functionality. Information about potential future products may not be incorporated into any contract. The development, release, and timing of any future features or functionality described for our products remains at our sole discretion.

Agenda

- § **z/VSE Status & Support**
- § **z/VSE Strategy**
- § **z/VSE Modernization Options**
- § **z/VSE Reference Customers & Learning**
- § **z/VSE Functional Enhancements**
 - z/VSE V5.1
 - z/VSE V5.1+
 - z/VSE V5.1++
-  § **Wrap-up**



z/VSE continues to demonstrate IBM's commitment

Hardware Support
More Capacity
Quality
z/OS Affinity
Interoperability
Protect Integrate Extend



z/VSE V4.3 - 4Q2010

- Ø z196 toleration / exploitation
- Ø 4-digit device addresses
- Ø 24-bit virtual storage constraint relief
- Ø IPv6/VSE as optional product
- Ø Linux Fast Path with z/VM

+ SoD: 64-bit virtual support

z/VSE V5.1 - 4Q2011

- Ø zEnterprise exploitation
- Ø IEDN connection to zBX
- Ø 64-bit virtual memory objects
- Ø ALS to System z9 (+ higher)
- Ø z/VSE z/VM IP Assist (VIA)

+ SoD: CICS Explorer, LFP in LPAR

z/VSE V5.1+ - 2Q2012

- Ø CICS Explorer Monitoring
- Ø Universal database connector
- Ø Linux Fast Path in LPAR

z/VSE V5.1++ - 2Q2013

- Ø 64-bit I/O for applications
- Ø Networking enhancements
- Ø Security enhancements

+ SoD: CICS Explorer Update, DVD Install, Price Reduction IPv6/VSE

z/VSE 5.1+ and ++ denote enhancements made available via PTF

For more information, please see the z/VSE web site:
<http://www.ibm.com/zvse/>

IBM z/VSE V5.1 - Additional enhancements

Additional enhancements announced on April 2nd, 2013. In addition to function already available with z/VSE V5.1, you get supplemental enhancements that are designed to:

- Support innovative IBM zEnterprise EC12 technology
 - Configurable Crypto Express4S
 - OSA-Express4S 1000BASE-T
- Support enhanced IBM System Storage options
 - IBM System Storage TS1140
 - IBM System Storage TS7700 Virtualization Engine Release 3.0
 - IBM System Storage DS8870
 - IBM Storwize V7000 Release 6.4
- Allow 64-bit Input/Output (IO) processing for applications
- Extend the z/VSE connectivity and networking options in heterogeneous environments
- Provide IPv6/VSE V1.1 security enhancements

For more information, please see the [announcement letter](#).

Statements of Direction included in this announcement:

IBM intends to add functionality that allows initial installation of z/VSE without requiring a physical tape. IBM intends in the future to enhance IBM CICS Explorer for IBM CICS Transaction Server for VSE/ESA to provide updates to CICS resources. It is planned to reduce the AEWLC and MWLC list price of IPv6/VSE V1.1.

Note: IBM's statements regarding its plans, directions, and intent are subject to change or withdrawal without notice at IBM's sole discretion.

[↑ Back to top](#)

Live Virtual Classes

z/VSE Security Overview and Update

This session provides an introduction and best practices to the basic security concepts of z/VSE. It includes CICS and batch security, plus connector and network security. It will also cover z/VSE security concepts in an open and heterogeneous world where z/VSE may connect to anyone and everyone. This session will also show you how to exploit z/VSE security features like Encryption Facility for z/VSE and SSL (Secure Socket Layer). In addition, it will describe IBM mainframe cryptographic technology, including Crypto Express and CP Assist for Cryptographic Function (CPACF).

Speaker: Ingo Franzki, IBM

Date: Tuesday, June 4, 2013

Time: US & Europe: 11:00 AM New York, 04:00 PM London, 05:00 PM Boeblingen, 15:00 UTC

Or: Europe & AP: 04:00 PM Japan, 07:00 UTC, 03:00 AM New York, 08:00 AM London, 09:00 AM Boeblingen

Duration: 60 Minutes

Note: For most US & European locations [Daylight Saving Time \(DST\)](#) ☺ is in effect. Please select your time zone on the top right corner on the registration web page.

☞ [Register](#) for the US & Europe event (11:00 AM New York, 04:00 PM London, 05:00 PM Boeblingen, 15:00 UTC)

Contact IBM



- ✉ Email z/VSE
- ➔ Find a Business Partner
- ☎ Call IBM: 1-866-883-8901
- Priority code: 101AS13W

Browse z/VSE

- ➔ About z/VSE
- ➔ How to buy
- ➔ News & announcements
- ➔ Events
- ➔ Solutions
- ➔ Products & components
- ➔ Documentation
- ➔ Service & support
- ➔ Downloads
- ➔ Education
- ➔ Partners
- ➔ FAQ
- ➔ Contact z/VSE

Mark your calendar



2013 IBM System z Technical University (Europe)
 June 10-14, 2013, Munich, Germany
 ➔ [Enroll now!](#)



2013 IBM System z Technical University (Americas) at EnterpriseSystems2013
 October 21-25, 2013, Orlando, FL, USA
 ➔ [Enroll now!](#)



European GSE/IBM Technical University for z/VSE, z/VM and Linux on System z
 September 30-October 2, 2013, Hamburg, Germany
 ☞ [Enroll now!](#)

➔ [Other z/VSE events](#)

Stay informed

Get the latest news about z/VSE through Twitter

- 📌 Digital Edition of #Enterprise Executive May/June 2013 just arrived: [#Systemz #zLinux #SystemzSIV](http://t.co/HMjLU1GaoR) NaN days ago
- 📌 A Solid History of #Mainframe Innovation Continues Through Storage and Networking Technologies <http://t.co/HMjLU1GaoR> NaN days ago
- 📌 Looking for a Replay of past #zVSE #zVM and #Linux on #IBMSystemz webcasts? Here you go: <http://t.co/rudWp1OHR> NaN days ago
- 📌 Learn more about LE #zVSE Attention Routine Commands at <http://t.co/bdYusq4qCW> NaN days ago
- 📌 #SUSE Linux Enterprise Server for System z

Thank you for attending this session – zVM21

Don't miss these valuable opportunities:

Keep the momentum going

ibm.com/training

Now is the time to explore your options for additional training. One stop shopping for all your technical training needs.

ibm.com/training/trainingpaths

IBM Training Paths – These flowcharts map out the sequence of classes you need, to obtain a specific skill or professional certification. Get started today!

ibm.com/certify

Stand out from the crowd when you earn a valuable credential of an IBM Certified Professional. Find certifications by product or solution.

Upcoming events

[2013 IBM Systems Technical Symposium](#)

September 9 - 11, 2013 | Moscow, Russia

[2013 IBM System x and System Storage Technical Universities](#)

October 14 – 18, 2013 | Berlin, Germany

[2013 IBM Power Systems Technical University](#)

November 4 – 8, 2013 | Athens, Greece

[IBM System x Technical Symposium](#)

November 12 - 14, 2013 | Dubai, United Arab Emirates

(*Note: IBM Clients - Alumni Early Bird Pricing for you and anyone from your company. Enroll using Promotion Code A6A.)

ibm.com/systems/conferenceseries

Match your interests with other world-wide IBM Technical Events.

We value your feedback

1. Submit **Session Evaluations** on ibmtechu.com and receive an entry to WIN prizes. *The more evaluations submitted, the greater your chance of winning!*
2. Submit your **Overall Session Evaluation** and receive a free gift at the registration desk.