

2012

# IBM System z Technical University

Enabling the infrastructure for smarter computing

## zDG06 – CICS Explorer for z/VSE

Ingolf Salm

[salm@de.ibm.com](mailto:salm@de.ibm.com)

09/20/2012



## Trademarks

The following are trademarks of the International Business Machines Corporation in the United States and/or other countries.

**IBM\***  
**IBM Logo\***

\* Registered trademarks of IBM Corporation

The following are trademarks or registered trademarks of other companies.

Adobe, the Adobe logo, PostScript, and the PostScript logo are either registered trademarks or trademarks of Adobe Systems Incorporated in the United States, and/or other countries.

Cell Broadband Engine is a trademark of Sony Computer Entertainment, Inc. in the United States, other countries, or both and is used under license therefrom.

Java and all Java-based trademarks are trademarks of Sun Microsystems, Inc. in the United States, other countries, or both.

Microsoft, Windows, Windows NT, and the Windows logo are trademarks of Microsoft Corporation in the United States, other countries, or both.

INFINIBAND, InfiniBand Trade Association and the INFINIBAND design marks are trademarks and/or service marks of the INFINIBAND Trade Association.

Intel, Intel logo, Intel Inside, Intel Inside logo, Intel Centrino, Intel Centrino logo, Celeron, Intel Xeon, Intel SpeedStep, Itanium, and Pentium are trademarks or registered trademarks of Intel Corporation or its subsidiaries in the United States and other countries.

UNIX is a registered trademark of The Open Group in the United States and other countries.

Linux is a registered trademark of Linus Torvalds in the United States, other countries, or both.

ITIL is a registered trademark, and a registered community trademark of the Office of Government Commerce, and is registered in the U.S. Patent and Trademark Office.

IT Infrastructure Library is a registered trademark of the Central Computer and Telecommunications Agency, which is now part of the Office of Government Commerce.

\* All other products may be trademarks or registered trademarks of their respective companies.

### Notes:

Performance is in Internal Throughput Rate (ITR) ratio based on measurements and projections using standard IBM benchmarks in a controlled environment. The actual throughput that any user will experience will vary depending upon considerations such as the amount of multiprogramming in the user's job stream, the I/O configuration, the storage configuration, and the workload processed. Therefore, no assurance can be given that an individual user will achieve throughput improvements equivalent to the performance ratios stated here.

IBM hardware products are manufactured from new parts, or new and serviceable used parts. Regardless, our warranty terms apply.

All customer examples cited or described in this presentation are presented as illustrations of the manner in which some customers have used IBM products and the results they may have achieved. Actual environmental costs and performance characteristics will vary depending on individual customer configurations and conditions.

This publication was produced in the United States. IBM may not offer the products, services or features discussed in this document in other countries, and the information may be subject to change without notice. Consult your local IBM business contact for information on the product or services available in your area.

All statements regarding IBM's future direction and intent are subject to change or withdrawal without notice, and represent goals and objectives only.

Information about non-IBM products is obtained from the manufacturers of those products or their published announcements. IBM has not tested those products and cannot confirm the performance, compatibility, or any other claims related to non-IBM products. Questions on the capabilities of non-IBM products should be addressed to the suppliers of those products.

Prices subject to change without notice. Contact your IBM representative or Business Partner for the most current pricing in your geography.

## VSE Roadmap

Quality

**z/VSE 5.1.1 (+ Enhancements) GA 06/15/2012**

- CICS Explorer, LFP in LPAR, database connector

Connectivity

**z/VSE 5.1 GA 11/25/2011**

- 64 bit virtual, zEnterprise exploitation
- SOD: CICS Explorer, ALS: z9 or higher

z/OS Affinity

**z/VSE 4.3 11/2010**

**Virtual storage constraint relief, 4 digit cuus**  
z/VSE 4.3.1 08/2011, *end of marketing 06/25/2012*

Capacity

**z/VSE 4.2 October 2008, end of service 10/31/2012**

More tasks, more memory, EF for z/VSE 1.1, CPU balancing,  
SCRT on z/VSE, SoD for CICS/VSE

z/VSE 4.2.1 07/2009 - PAV, EF for z/VSE 1.2

z/VSE 4.2.2 04/2010 - IPv6/VSE 05/2010

**CICS/VSE end of service 10/31/2012**

**z/VSE 4.1 March 2007, end of service 04/30/2011**

- z/Architecture only, 64 bit real addressing,  
MWLC – full and sub-capacity pricing

## *CICS Explorer for z/VSE*

- Fulfills statement of general direction (SOD):

IBM intends to provide CICS Explorer capabilities for CICS TS for VSE/ESA, to deliver additional value.

- Announced 04/03/2012, GA 06/15/2012
- CICS Explorer – The new face to CICS
  - New system management framework for CICS TS
  - Consists of CICS Explorer client and a CICS TS server extension
    - CICS Explorer client
      - Read-only capabilities
      - Eclipse-based user interface on workstation
      - Connects to CICS TS via TCP/IP
      - Communication via HTTP requests
    - CICS Explorer server extension
      - Delivered as PTF for CICS TS for VSE/ESA 1.1.1
      - Available on z/VSE 5.1 only

## *CICS Explorer for z/VSE*

- CICS Explorer client supports
  - CICS TS for z/OS
  - CICS TS for VSE/ESA
- Provides a view of some CICS system management functions
- Displays details of CICS resources in definition views
- Administration operations are not supported
- Displays the resource attributes as of CEMT / CEDA
- Provides context and more detailed help

## *CICS Explorer for z/VSE – Supported Operations*

- Regions
- TCP/IP services
- ISC/MRO connections
- Terminals
- Transactions
- Transaction classes
- Programs
- Tasks
- Files
- Interval control requests
- Transient data (TD) and temporary storage (TS) queues
- Document templates



## CICS Explorer for z/VSE on the Web

The screenshot displays the IBM System z Technical University website. The top navigation bar includes the IBM logo, a search box, and links for Home, Solutions, Services, Products, Support & downloads, and My IBM. The main content area is titled "Products and components" and features a navigation menu on the left with options like "About z/VSE", "How to buy", "News & announcements", "Events", "Solutions", "Products & components", "Documentation", "Service & support", "Downloads", "Education", "Partners", "FAQ", and "Contact z/VSE". The main content area is divided into "VSE components" and "VSE products" tabs. Under "VSE products", there are links for "z/VSE V5.1", "z/VSE V4.3", and "z/VSE V4.2". A list of products includes "General", "VSE Central Functions", "CICS Transaction Server", "VSE Connectors", "TCP/IP", and "VSE VTape". A red arrow points to the "CICS Explorer" link under the "CICS Transaction Server" section. Below this, there is a section for "CICS Transaction Server - 5648-054" with a description: "CICS Transaction Server 1.1.1 (5648-054) is part of VSE since VSE/ESA 2.4. CICS represents the current transaction monitor for the VSE operating system." and a list of benefits. The right sidebar contains sections for "We're here to help" (with an "E-mail us" link), "Stay informed" (with a "Get the latest news about z/VSE through Twitter" link), and "Mark your calendar" (with a "2012 IBM System z Technical University" event listing for October 1-5, 2012 in Las Vegas, NV, USA).

## CICS Explorer for z/VSE on the Web

### CICS Explorer

The new face of CICS Transaction Server for VSE/ESA V1.1

The CICS Explorer is the new systems management framework for CICS TS. It provides read-only capabilities to display CICS resources. The CICS Explorer consists of a CICS Explorer client and a CICS TS server extension. The CICS Explorer client can be downloaded from the [CICS Explorer web page](#), and the CICS TS server extension is delivered as CICS TS PTF. When used with CICS TS for VSE/ESA, it requires z/VSE V5.1, or later.

The CICS Explorer user guide provides some more information on the CICS Explorer installation and use.

 [IBM CICS Explorer User Guide V1.2b \(PDF, 500KB\)](#)

→ [IBM CICS Explorer download](#)



↑ [Back to top](#)



**Data encryption.** Protect your critical data. Don't be the next headline.

→ [Learn more](#)

### Now available

→ [IBM Rational COBOL Runtime for z/VSE V7.5](#)

→ [IBM WebSphere MQ for z/VSE V3.0](#)



## CICS Explorer for z/VSE on the Web

The screenshot shows the IBM website interface for the CICS Explorer V1.1.1 product. The top navigation bar includes the IBM logo, a location selector for "United States", and menu items for Home, Solutions, Services, Products, Support & downloads, and My IBM. The breadcrumb trail indicates the path: Software > Host Transaction Processing > CICS family > CICS Transaction Server > CICS Explorer.

**CICS Explorer**

Features and benefits  
System requirements  
Library  
News

Overall rating: 3.0 (5 stars)  
Value for price: 4.0  
Features: 2.0  
Performance: 4.0  
Scalability: 3.0  
Ease of use: 4.0

1 out of 1 (100%) customers would recommend this product.  
→ Read 1 review  
→ Write a review

Share this product:  
f t

**IBM Software products**  
Find products

Search by keyword  
Enter search terms  
Search

### CICS Explorer V1.1.1

Now available!  
→ Download now

#### Overview

**IBM CICS Explorer – The New Face of CICS. An Integration point for CICS tooling, with rich CICS views, data and methods.**

**Learn more**

- Announcement letter
- Architecture (PDF, 408KB)

**Click here to get CICS Explorer Free Product Download**

Looking for new ways to accelerate the transfer of knowledge, skills and best practice to the next generation of technical staff/experts? Need to maintain productivity and protect service-levels? CICS Explorer and System z lead the way to platform simplification.

- Common, intuitive, Eclipse-based environment for architects, developers, administrators, system programmers and operators
- Powerful task-oriented views, context-sensitive resource editors and wizards provide integrated access to a broad range of CICS and z/OS with data and control capabilities
- An intuitive and secure way to view/edit z/OS datasets, zFS files, submit JCL, view output and job logs
- Common connection management and single-sign on simplifies access to z/OS resources and sub-systems, including z/OSMF V1.13
- Mass deployment options include Java Web Start (JWS) and centralized connection configuration
- New in CICS Explorer V1.1.1 is z/OS Explorer component, Connection Management view, JWS, copy and paste to a spreadsheet or a new resource, numerous z/OS files, dataset enhancements and CICS VSE support
- Software Development Kit for CICS Java programs, customer and 3rd-party plug-ins
- Integration point for CICS TS, CICS Tools, CICS TG, and PD Tools. Embedded in IMS Enterprise Suite Explorer for Development and Rational Developer for System z, giving tools plug-ins a consistent user experience regardless of platform

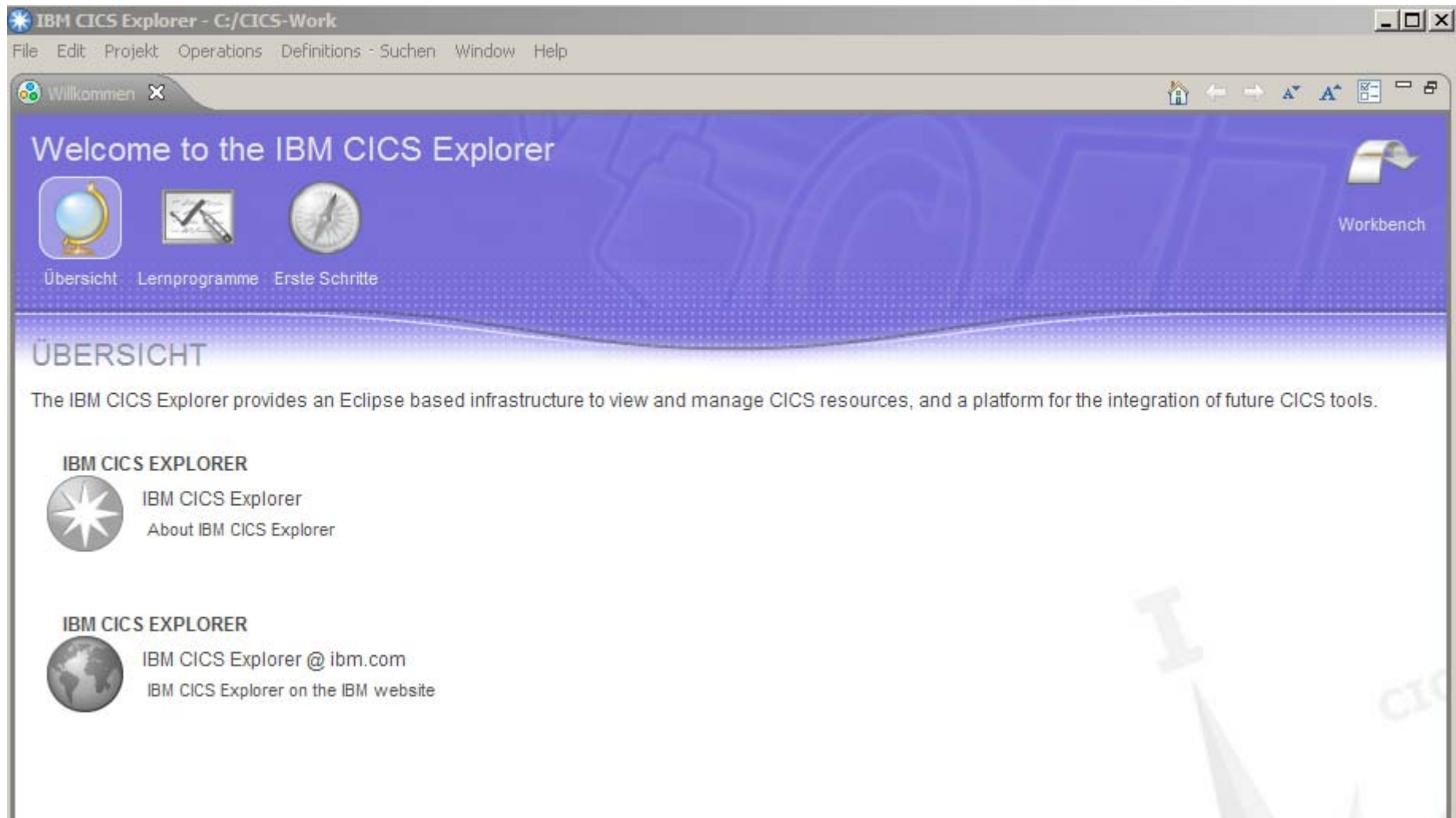
## *CICS Explorer for z/VSE - Installation*

- CICS Explorer client
  - Download CICS Explorer zip file from the web
  - Installation on the local workstation or remote network drive
  - Configure the way it connects to the CICS system
    - Connect credentials, CICS system connection, ...
    - z/VSE supports the CICS Management Interface only

## *CICS Explorer for z/VSE - Installation*

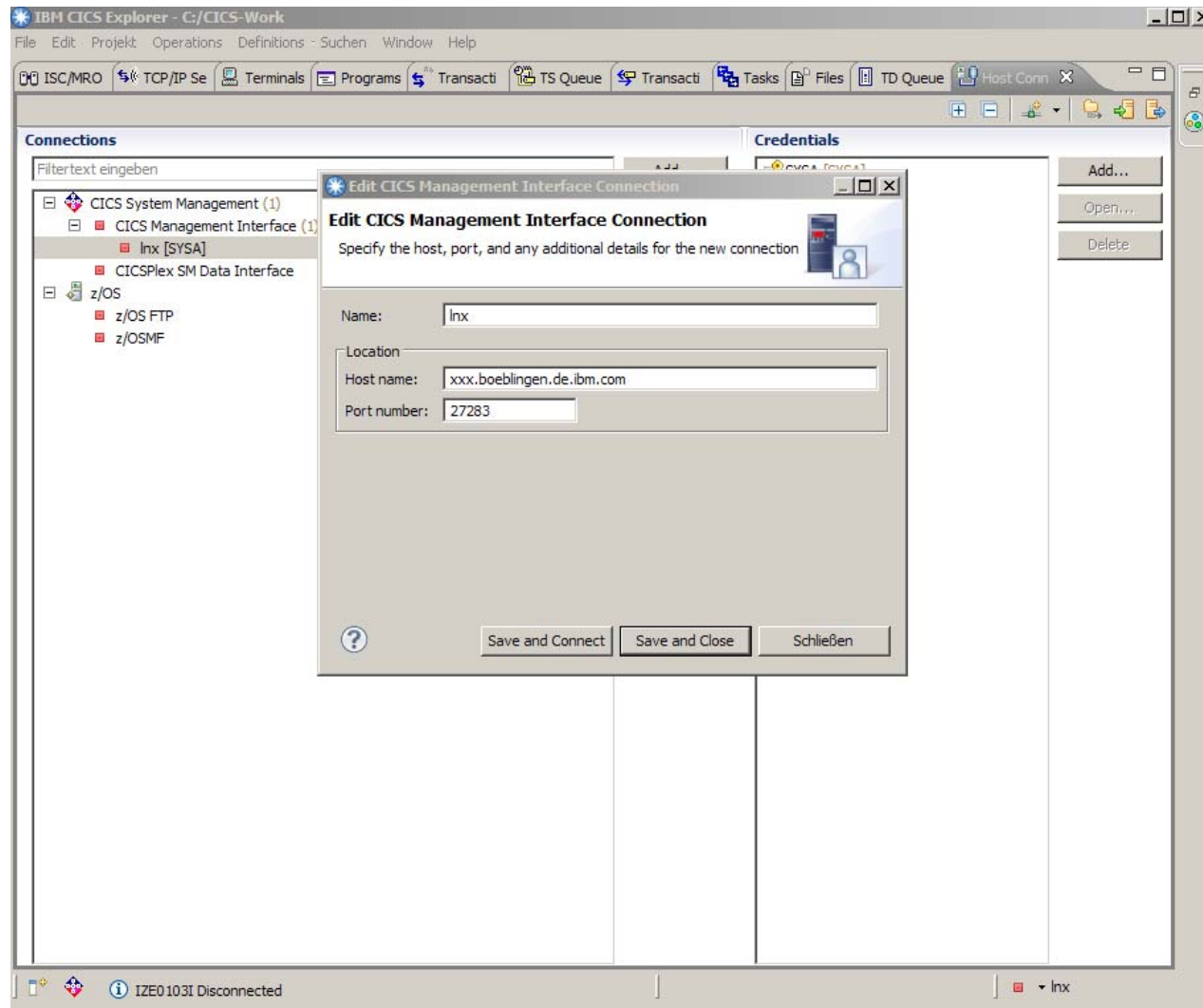
- CICS Transaction Server
  - Install PTFs for CICS Explorer support (included in z/VSE 5.1.1)
    - CICS Management Client Interface (CMCI)
    - CICSplex System Management (CPSM)
  
  - System requirements
    - CICS Explorer connects to z/VSE 5.1 only
    - Additional extended Dynamic Storage Area (DSA) required
      - Size depends on active CICS resources
      - Good start is 450 MB, new PTF reduces requirements to about 50 MB
      - May impact partition allocation
    - TCP/IP for VSE/ESA 1.5F or IPv6/VSE 1.1 or Linux Fast Path (IPv4 only)
  
  - CICS setup skeletons in ICCF library 59
    - CICS System Definitions, transaction security setup, DCT, ...
  - Changing CICS SIT (SEC=YES, TCPIP=YES)
  - Define TCPIPSERVICE
  - ...

## CICS Explorer for z/VSE – Welcome Page





## CICS Explorer for z/VSE - Configuration





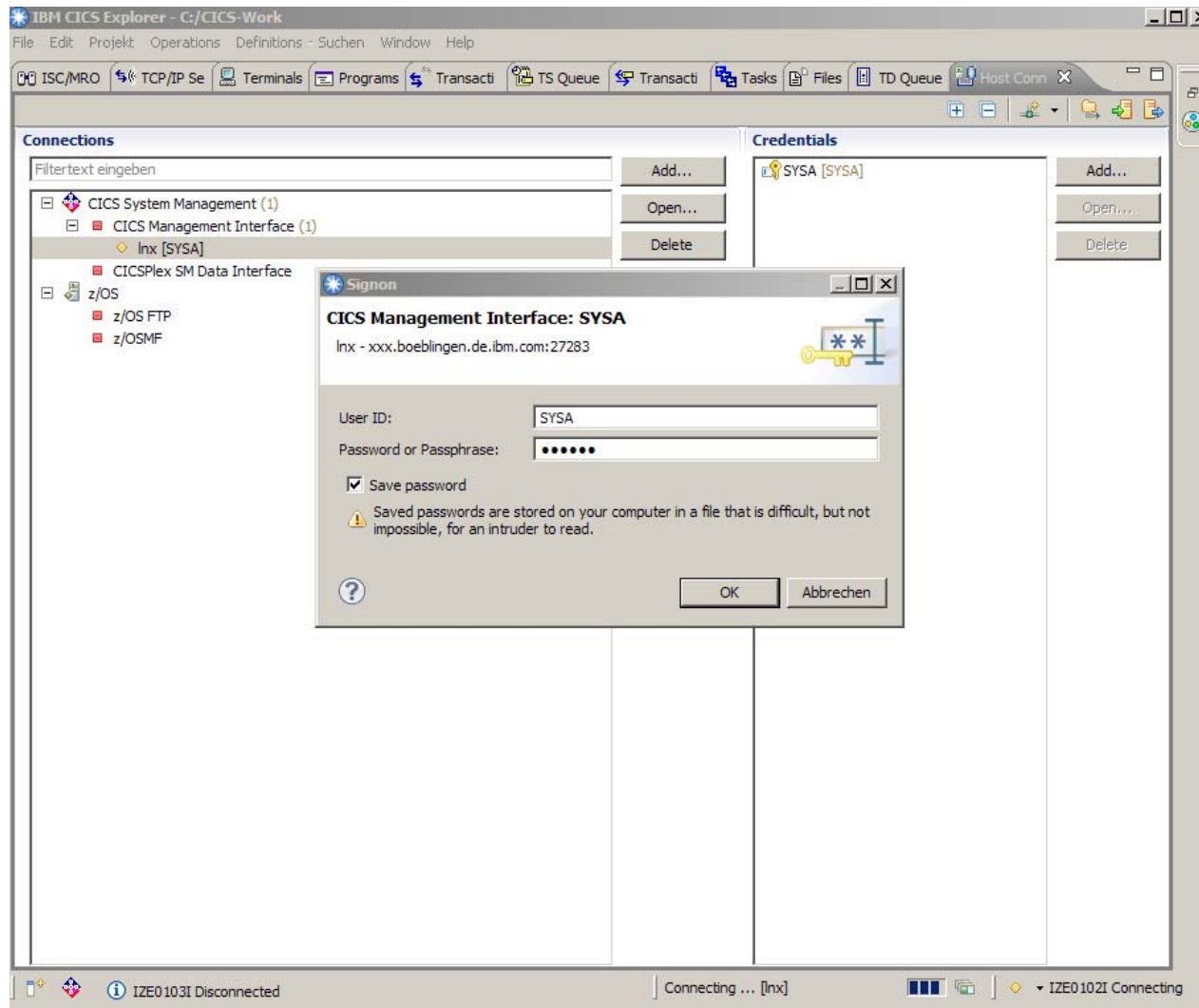
## CICS Explorer for z/VSE – Start CORM Transaction on Server

```

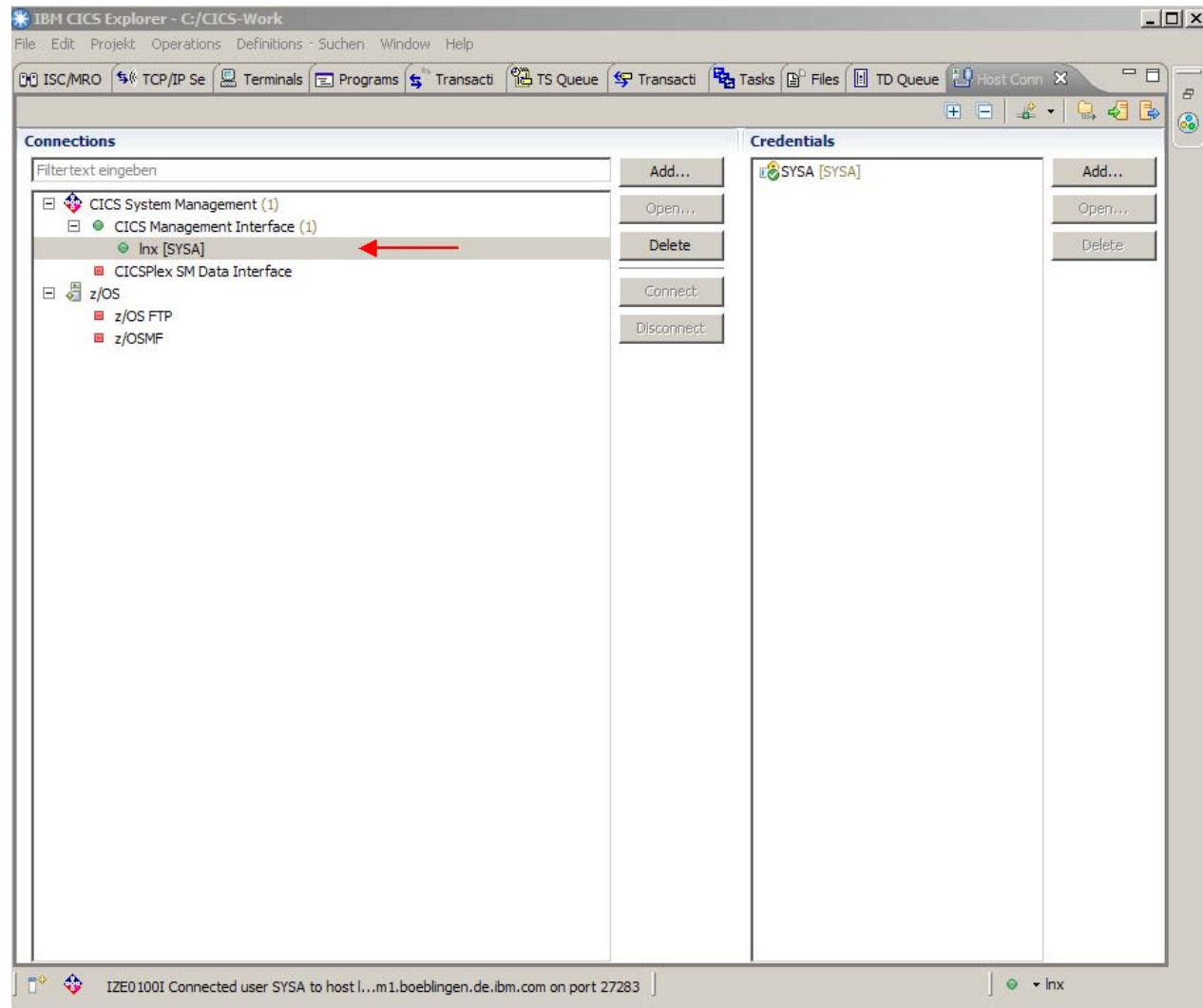
BOEVHSPB
File Edit View Communication Actions Window Help
SYSTEM: z/VSE z/VSE 5.1 TURBO (01) USER: SYS
VM USER ID: LNXSALM1 TIME: 15:35:14
F8 0488 DFHS00101I PRODCICS Sockets domain initialization has ended.
F8 0488 DFHWB1007 PRODCICS Initializing CICS Web environment.
F8 0487 BSD100I IPNRBSDC 01.05 F 09/12/11 18.37 032CE000 01E7
F8 0488 DFHWB1008 PRODCICS CICS Web environment initialization is complete.
F8 0488 DFHSI8430I PRODCICS About to link to PLT programs during the third
stage of initialization.
F8 0488 DFHSI8434I PRODCICS Control returned from PLT programs during the
third stage of initialization.
F8 0488 DFHSI1517 PRODCICS Control is being given to CICS.
F8 0488 DFHFC0208I PRODCICS
LSR pool 1 is being built dynamically by CICS because the following
are not defined: 'CI STPF' 'STDTMCC' 'MOVKEVI ENCTU' A delay
is possible. ← corm (transaction executed in CICS)
F8 0488 EYUNX0001I PRODCICS SMSS ..... program .....
F8 0488 EYUNX0030I PRODCICS SMSS successfully initiated from terminal A000
F8 0488 EYUXL0003I PRODCICS CPSM Version 420 SMSS startup in progress
F8 0488 EYUXL0119I PRODCICS CPSM Kernel loaded from EYU9XL02
F8 0488 EYUXL0005I PRODCICS Major Object created for KNL
F8 0488 EYUXL0005I PRODCICS Major Object created for TRC
F8 0488 EYUXL0005I PRODCICS Major Object created for MSG
F8 0488 EYUXL0005I PRODCICS Major Object created for SRV
F8 0488 EYUXL0005I PRODCICS Major Object created for CHE
F8 0488 EYUXL0005I PRODCICS Major Object created for DAT
F8 0488 EYUXL0005I PRODCICS Major Object created for QUE
F8 0488 EYUXL0005I PRODCICS Major Object created for MAS
==>

1=HLP 2=CPY 3=END 6=CNCL 7=BWD 8=FWD 9=EXPL 10=INP 11=PCUU 12=INFO
FILTER: ALL BWD MODE: REDISPLAY
MA a 28/006
    
```

## CICS Explorer for z/VSE – Sign-on



## CICS Explorer for z/VSE – Connected







IBM CICS Explorer - C:/CICS-Work

File Edit Projekt Operations Definitions Suchen Window Help

ISC/MRO Con TCP/IP Servic Terminals Programs Transactions TS Queues Transaction Cl Tasks Files TD Queues

CNX0211I Context: PRODCICS. Resource: TERMNL. 62 records collected at 28.09.2012 18:02:25

Region	Name	Network Name	Acquire Status	Service Status	ATI Status	TTI Status	Session Status	User ID	Transaction ID
PRODCICS	-AAA	TMPLATE1	RELEASED	INSERVICE	ATI	TTI	NOCREATE	CICSUSER	
PRODCICS	-AAB	TMPLATE1	RELEASED	INSERVICE	ATI	TTI	CREATE	CICSUSER	
PRODCICS	-AAC	TMPLATE1	RELEASED	OUTSERVICE	ATI	TTI	CREATE	CICSUSER	
PRODCICS	-AAD	TMPLATE1	RELEASED	OUTSERVICE	ATI	TTI	CREATE	CICSUSER	
PRODCICS	-AAE	TMPLATE1	RELEASED	OUTSERVICE	ATI	TTI	CREATE	CICSUSER	
PRODCICS	-AAF	TMPLATE1	RELEASED	OUTSERVICE	ATI	TTI	CREATE	CICSUSER	
PRODCICS	-AAG	TMPLATE1	RELEASED	OUTSERVICE	ATI	TTI	CREATE	CICSUSER	
PRODCICS	-AAH	TMPLATE1	RELEASED	OUTSERVICE	ATI	TTI	CREATE	CICSUSER	
PRODCICS	-AAI	TMPLATE1	RELEASED	OUTSERVICE	ATI	TTI	CREATE	CICSUSER	
PRODCICS	-AAJ	TMPLATE1	RELEASED	OUTSERVICE	ATI	TTI	CREATE	CICSUSER	
PRODCICS	-AAK	TMPLATE1	RELEASED	OUTSERVICE	ATI	TTI	CREATE	CICSUSER	
PRODCICS	-AAL	TMPLATE1	RELEASED	OUTSERVICE	ATI	TTI	CREATE	CICSUSER	
PRODCICS	-AAM	TMPLATE2	RELEASED	INSERVICE	ATI	TTI	CREATE	CICSUSER	
PRODCICS	-AAN	TMPLATE3	RELEASED	INSERVICE	ATI	TTI	NOCREATE	CICSUSER	
PRODCICS	-AAO	TMPLATE3	RELEASED	INSERVICE	ATI	TTI	CREATE	CICSUSER	
PRODCICS	-AAP	TMPLATE3	RELEASED	OUTSERVICE	ATI	TTI	CREATE	CICSUSER	
PRODCICS	-AAQ	TMPLATE3	RELEASED	OUTSERVICE	ATI	TTI	CREATE	CICSUSER	
PRODCICS	-AAR	TMPLATE3	RELEASED	OUTSERVICE	ATI	TTI	CREATE	CICSUSER	
PRODCICS	-AAS	TMPLATE3	RELEASED	OUTSERVICE	ATI	TTI	CREATE	CICSUSER	
PRODCICS	-AAT	TMPLATE3	RELEASED	OUTSERVICE	ATI	TTI	CREATE	CICSUSER	
PRODCICS	-AAU	TMPLATE3	RELEASED	OUTSERVICE	ATI	TTI	CREATE	CICSUSER	
PRODCICS	-AAV	TMPLATE3	RELEASED	OUTSERVICE	ATI	TTI	CREATE	CICSUSER	
PRODCICS	-AAW	TMPLATE3	RELEASED	OUTSERVICE	ATI	TTI	CREATE	CICSUSER	
PRODCICS	-AAX	TMPLATE3	RELEASED	OUTSERVICE	ATI	TTI	CREATE	CICSUSER	
PRODCICS	-AAY	TMPLATE3	RELEASED	OUTSERVICE	ATI	TTI	CREATE	CICSUSER	
PRODCICS	CBRF	CBRF	RELEASED	INSERVICE	ATI	TTI	NOCREATE	CICSUSER	
PRODCICS	CERR		NOTAPPLIC	INSERVICE	NOATI	TTI	NOTAPPLIC	CICSUSER	
PRODCICS	CNSL		NOTAPPLIC	INSERVICE	ATI	TTI	NOTAPPLIC	CNSL	
PRODCICS	CO01		NOTAPPLIC	INSERVICE	ATI	TTI	NOTAPPLIC	CNSL	
PRODCICS	CO02		NOTAPPLIC	INSERVICE	ATI	TTI	NOTAPPLIC	CNSL	
PRODCICS	CO03		NOTAPPLIC	INSERVICE	ATI	TTI	NOTAPPLIC	CNSL	
PRODCICS	CO04		NOTAPPLIC	INSERVICE	ATI	TTI	NOTAPPLIC	CNSL	
PRODCICS	CO05		NOTAPPLIC	INSERVICE	ATI	TTI	NOTAPPLIC	CNSL	
PRODCICS	CO06		NOTAPPLIC	INSERVICE	ATI	TTI	NOTAPPLIC	CNSL	
PRODCICS	CO07		NOTAPPLIC	INSERVICE	ATI	TTI	NOTAPPLIC	CNSL	
PRODCICS	CO08		NOTAPPLIC	INSERVICE	ATI	TTI	NOTAPPLIC	CNSL	
PRODCICS	CO09		NOTAPPLIC	INSERVICE	ATI	TTI	NOTAPPLIC	CNSL	
PRODCICS	CO10		NOTAPPLIC	INSERVICE	ATI	TTI	NOTAPPLIC	CNSL	
PRODCICS	CO11		NOTAPPLIC	INSERVICE	ATI	TTI	NOTAPPLIC	CNSL	
PRODCICS	CO12		NOTAPPLIC	INSERVICE	ATI	TTI	NOTAPPLIC	CNSL	
PRODCICS	CO13		NOTAPPLIC	INSERVICE	ATI	TTI	NOTAPPLIC	CNSL	

IZE0100I Connected user SYSA to host l...m1.boeblingen.de.ibm.com on port 27283

lnx



# 2012 IBM System z Technical University

IBM CICS Explorer - C:/CICS-Work

File Edit Projekt Operations Definitions - Suchen Window Help

ISC/MRO Con TCP/IP Servic Terminals Programs Transactions TS Queues Transaction Cl Tasks Files TD Queues

CNX0211I Context: PRODCICS. Resource: PROGRAM. 1.603 records collected at 28.09.2012 18:04:08

Region	Name	Status	Use Count	Concurrent Us...	Language	Share Status	CEDF Status	NEWCOPY Status
PRODCICS	\$EDCTCPM	✓ ENABLED	0	0	C	N/A	CEDF	NOTREQUIRED
PRODCICS	\$EDTCPV	✓ ENABLED	0	0	C	N/A	CEDF	NOTREQUIRED
PRODCICS	ARXITCPU	✓ ENABLED	0	0	ASSEMBLER	N/A	CEDF	NOTREQUIRED
PRODCICS	BSTADMII	✓ ENABLED	0	0	ASSEMBLER	N/A	CEDF	NOTREQUIRED
PRODCICS	CEEBINT	✓ ENABLED	1	1	ASSEMBLER	N/A	CEDF	NOTREQUIRED
PRODCICS	CEEBNATX	✓ ENABLED	0	0	ASSEMBLER	N/A	CEDF	NOTREQUIRED
PRODCICS	CEECBLDY	✓ ENABLED	0	0	ASSEMBLER	N/A	CEDF	NOTREQUIRED
PRODCICS	CEECICIS	✓ ENABLED	1	1	ASSEMBLER	N/A	CEDF	NOTREQUIRED
PRODCICS	CEECDATX	✓ ENABLED	0	0	ASSEMBLER	N/A	CEDF	NOTREQUIRED
PRODCICS	CEECMI	✓ ENABLED	0	0	ASSEMBLER	N/A	CEDF	NOTREQUIRED
PRODCICS	CEECOPT	✓ ENABLED	1	1	ASSEMBLER	N/A	CEDF	NOTREQUIRED
PRODCICS	CEECRHP	✓ ENABLED	0	0	ASSEMBLER	N/A	CEDF	NOTREQUIRED
PRODCICS	CEECXITA	✓ ENABLED	1	1	ASSEMBLER	N/A	CEDF	NOTREQUIRED
PRODCICS	CEECXTAN	✓ ENABLED	1	1	ASSEMBLER	N/A	CEDF	NOTREQUIRED
PRODCICS	CEECZST	✓ ENABLED	0	0	ASSEMBLER	N/A	CEDF	NOTREQUIRED
PRODCICS	CEEDATE	✓ ENABLED	0	0	ASSEMBLER	N/A	CEDF	NOTREQUIRED
PRODCICS	CEEDATM	✓ ENABLED	0	0	ASSEMBLER	N/A	CEDF	NOTREQUIRED
PRODCICS	CEEDAYS	✓ ENABLED	0	0	ASSEMBLER	N/A	CEDF	NOTREQUIRED
PRODCICS	CEEDCOD	✓ ENABLED	0	0	ASSEMBLER	N/A	CEDF	NOTREQUIRED
PRODCICS	CEEDSHP	✓ ENABLED	0	0	ASSEMBLER	N/A	CEDF	NOTREQUIRED
PRODCICS	CEEDYWK	✓ ENABLED	0	0	ASSEMBLER	N/A	CEDF	NOTREQUIRED
PRODCICS	CEENV	✓ ENABLED	0	0	ASSEMBLER	N/A	CEDF	NOTREQUIRED
PRODCICS	CEEEV000	✓ ENABLED	0	0	NOTDEFINED	N/A	CEDF	REQUIRED
PRODCICS	CEEEV001	✓ ENABLED	0	0	NOTDEFINED	N/A	CEDF	REQUIRED
PRODCICS	CEEEV002	✓ ENABLED	0	0	NOTDEFINED	N/A	CEDF	REQUIRED
PRODCICS	CEEEV003	✓ ENABLED	1	1	ASSEMBLER	N/A	CEDF	NOTREQUIRED
PRODCICS	CEEEV004	✓ ENABLED	0	0	NOTDEFINED	N/A	CEDF	REQUIRED
PRODCICS	CEEEV005	✓ ENABLED	1	1	ASSEMBLER	N/A	CEDF	NOTREQUIRED
PRODCICS	CEEEV006	✓ ENABLED	0	0	NOTDEFINED	N/A	CEDF	REQUIRED
PRODCICS	CEEEV007	✓ ENABLED	0	0	NOTDEFINED	N/A	CEDF	REQUIRED
PRODCICS	CEEEV008	✓ ENABLED	0	0	NOTDEFINED	N/A	CEDF	REQUIRED
PRODCICS	CEEEV009	✓ ENABLED	0	0	NOTDEFINED	N/A	CEDF	REQUIRED
PRODCICS	CEEEV010	✓ ENABLED	1	1	ASSEMBLER	N/A	CEDF	NOTREQUIRED
PRODCICS	CFFFV011	✓ FNARI FD	0	0	NOTDFINTFD	N/A	CFDF	RFOLITRFD

IZE0100I Connected user SYSA to host l...m1.boeblingen.de.ibm.com on port 27283

lnx

# 2012 IBM System z Technical University

IBM CICS Explorer - C:/CICS-Work

File Edit Projekt Operations Definitions - Suchen Window Help

ISC/MRO Con TCP/IP Servic Terminals Programs Transactions TS Queues Transaction Cl Tasks Files TD Queues

CNX0211I Context: PRODCICS. Resource: PROGRAM. 1.603 records collected at 28.09.2012 18:04:08

Region	Name	Status	Use Count	Concurrent Us...	Language	Share Status	CEDF Status	NEWCOPY Status
PRODCICS	\$EDCTCPM	✓ ENABLED	0	0	C	N/A	CEDF	NOTREQUIRED
PRODCICS	\$EDTCPV	✓ ENABLED	0	0	C	N/A	CEDF	NOTREQUIRED
PRODCICS	ARXITCPU	✓ ENABLED	0	0	ASSEMBLER	N/A	CEDF	NOTREQUIRED
PRODCICS	BSTADMII	✓ ENABLED	0	0	ASSEMBLER	N/A	CEDF	NOTREQUIRED
PRODCICS	CEEBINT	✓ ENABLED	1	1	ASSEMBLER	N/A	CEDF	NOTREQUIRED
PRODCICS	CEEBNATX	✓ ENABLED	0	0	ASSEMBLER	N/A	CEDF	NOTREQUIRED
PRODCICS	CEECBLDY	✓ ENABLED	0	0	ASSEMBLER	N/A	CEDF	NOTREQUIRED
PRODCICS	CEECICIS	✓ ENABLED	1	1	ASSEMBLER	N/A	CEDF	NOTREQUIRED
PRODCICS	CEECDATX	✓ ENABLED	0	0	ASSEMBLER	N/A	CEDF	NOTREQUIRED
PRODCICS	CEECMI	✓ ENABLED	0	0	ASSEMBLER	N/A	CEDF	NOTREQUIRED
PRODCICS	CEEOPT	✓ ENABLED	1	1				
PRODCICS	CEECRHP	✓ ENABLED	0	0				
PRODCICS	CEECXITA	✓ ENABLED	1	1				
PRODCICS	CEECXTAN	✓ ENABLED	1	1				
PRODCICS	CEECZST	✓ ENABLED	0	0				
PRODCICS	CEEDATE	✓ ENABLED	0	0				
PRODCICS	CEEDATM	✓ ENABLED	0	0				
PRODCICS	CEEDAYS	✓ ENABLED	0	0				
PRODCICS	CEEDCOD	✓ ENABLED	0	0				
PRODCICS	CEEDSHP	✓ ENABLED	0	0				
PRODCICS	CEEDYWK	✓ ENABLED	0	0				
PRODCICS	CEENV	✓ ENABLED	0	0				
PRODCICS	CEEEV000	✓ ENABLED	0	0				
PRODCICS	CEEEV001	✓ ENABLED	0	0				
PRODCICS	CEEEV002	✓ ENABLED	0	0				
PRODCICS	CEEEV003	✓ ENABLED	1	1				
PRODCICS	CEEEV004	✓ ENABLED	0	0				
PRODCICS	CEEEV005	✓ ENABLED	1	1				
PRODCICS	CEEEV006	✓ ENABLED	0	0				
PRODCICS	CEEEV007	✓ ENABLED	0	0				
PRODCICS	CEEEV008	✓ ENABLED	0	0				
PRODCICS	CEEEV009	✓ ENABLED	0	0				
PRODCICS	CEEEV010	✓ ENABLED	1	1				
PRODCICS	CFFFV011	✓ FNARI FD	0	0				

IZEO100I Connected user SYSA to host l...m1.boeblingen.de.ibm.com on po

BOEVHSPB

File Edit View Communication Actions Window Help

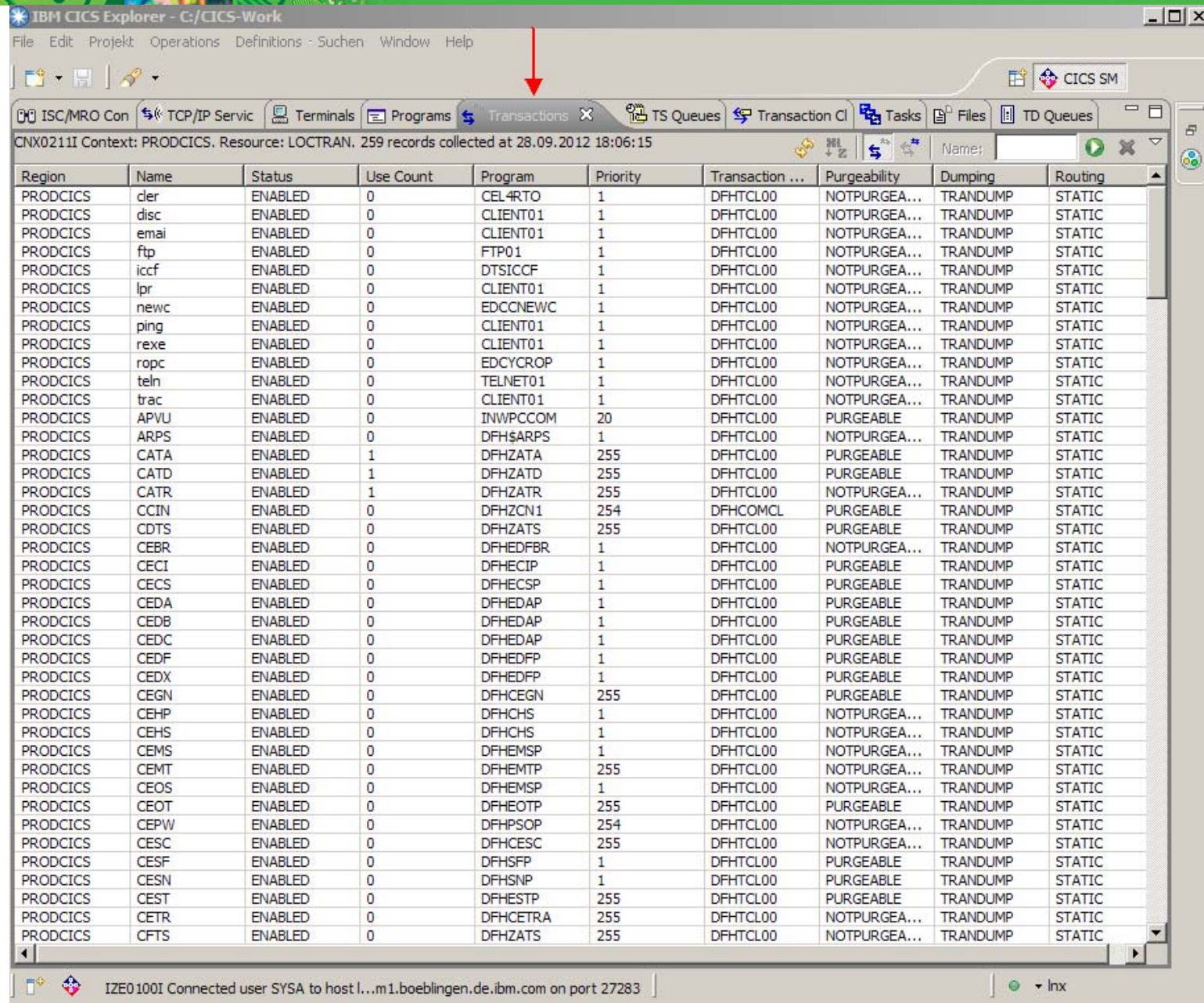
```

I PROG
STATUS: RESULTS - OVERTYPE TO MODIFY
Prog($EDCTCPM) Len(0000000) C Pro Ena Pri Ced
Res(000) Use(0000000000) Bel Uex Ful
Prog($EDTCPV) Len(0000000) C Pro Ena Pri Ced
Res(000) Use(0000000000) Bel Uex Ful
Prog(ARXITCPU) Len(0000000) Ass Pro Ena Pri Ced
Res(000) Use(0000000000) Bel Uex Ful
Prog(BSTADMII) Len(0000000) Ass Pro Ena Pri Ced
Res(000) Use(0000000000) Bel Cex Ful
Prog(CEEBINT ) Len(00000008) Ass Pro Ena Pri Ced
Res(001) Use(0000000001) Bel Uex Ful
Prog(CEEBNATX) Len(0000000) Ass Pro Ena Sha Ced
Res(000) Use(0000000000) Bel Uex Ful
Prog(CEECBLDY) Len(0000000) Ass Pro Ena Pri Ced
Res(000) Use(0000000000) Bel Uex Ful
Prog(CEECCICIS) Len(0043464) Ass Pro Ena Sha Ced
Res(001) Use(0000000001) Bel Uex Ful
+ Prog(CEECDATX) Len(0000000) Ass Pro Ena Pri Ced
Res(000) Use(0000000000) Bel Uex Ful

SYSID=CIC2 APPLID=PRODCICS
RESPONSE: NORMAL TIME: 16.21.55 DATE: 09.28.12
PF 1 HELP 3 END 7 SBH 8 SFH 9 MSG 10 SB 11 SF
    
```



# 2012 IBM System z Technical University



IBM CICS Explorer - C:/CICS-Work

File Edit Projekt Operations Definitions - Suchen Window Help

ISC/MRO Con TCP/IP Servic Terminals Programs Transactions TS Queues Transaction Cl Tasks Files TD Queues

CNX0211I Context: PRODCICS. Resource: LOCTRAN. 259 records collected at 28.09.2012 18:06:15

Region	Name	Status	Use Count	Program	Priority	Transaction ...	Purgeability	Dumping	Routing
PRODCICS	cler	ENABLED	0	CEL4RTO	1	DFHTCL00	NOTPURGEA...	TRANDUMP	STATIC
PRODCICS	disc	ENABLED	0	CLIENT01	1	DFHTCL00	NOTPURGEA...	TRANDUMP	STATIC
PRODCICS	emai	ENABLED	0	CLIENT01	1	DFHTCL00	NOTPURGEA...	TRANDUMP	STATIC
PRODCICS	ftp	ENABLED	0	FTP01	1	DFHTCL00	NOTPURGEA...	TRANDUMP	STATIC
PRODCICS	iccf	ENABLED	0	DTSICCF	1	DFHTCL00	NOTPURGEA...	TRANDUMP	STATIC
PRODCICS	lpr	ENABLED	0	CLIENT01	1	DFHTCL00	NOTPURGEA...	TRANDUMP	STATIC
PRODCICS	newc	ENABLED	0	EDCCNEWC	1	DFHTCL00	NOTPURGEA...	TRANDUMP	STATIC
PRODCICS	ping	ENABLED	0	CLIENT01	1	DFHTCL00	NOTPURGEA...	TRANDUMP	STATIC
PRODCICS	rexe	ENABLED	0	CLIENT01	1	DFHTCL00	NOTPURGEA...	TRANDUMP	STATIC
PRODCICS	ropc	ENABLED	0	EDCYCROP	1	DFHTCL00	NOTPURGEA...	TRANDUMP	STATIC
PRODCICS	teln	ENABLED	0	TELNET01	1	DFHTCL00	NOTPURGEA...	TRANDUMP	STATIC
PRODCICS	trac	ENABLED	0	CLIENT01	1	DFHTCL00	NOTPURGEA...	TRANDUMP	STATIC
PRODCICS	APVU	ENABLED	0	INWPCCOM	20	DFHTCL00	PURGEABLE	TRANDUMP	STATIC
PRODCICS	ARPS	ENABLED	0	DFH\$ARPS	1	DFHTCL00	NOTPURGEA...	TRANDUMP	STATIC
PRODCICS	CATA	ENABLED	1	DFHZATA	255	DFHTCL00	PURGEABLE	TRANDUMP	STATIC
PRODCICS	CATD	ENABLED	1	DFHZATD	255	DFHTCL00	PURGEABLE	TRANDUMP	STATIC
PRODCICS	CATR	ENABLED	1	DFHZATR	255	DFHTCL00	NOTPURGEA...	TRANDUMP	STATIC
PRODCICS	CCIN	ENABLED	0	DFHZCN1	254	DFHCOMCL	PURGEABLE	TRANDUMP	STATIC
PRODCICS	CDTS	ENABLED	0	DFHZATS	255	DFHTCL00	PURGEABLE	TRANDUMP	STATIC
PRODCICS	CEBR	ENABLED	0	DFHEDFBR	1	DFHTCL00	NOTPURGEA...	TRANDUMP	STATIC
PRODCICS	CECI	ENABLED	0	DFHECIP	1	DFHTCL00	PURGEABLE	TRANDUMP	STATIC
PRODCICS	CECS	ENABLED	0	DFHECSP	1	DFHTCL00	PURGEABLE	TRANDUMP	STATIC
PRODCICS	CEDA	ENABLED	0	DFHEDAP	1	DFHTCL00	PURGEABLE	TRANDUMP	STATIC
PRODCICS	CEDB	ENABLED	0	DFHEDAP	1	DFHTCL00	PURGEABLE	TRANDUMP	STATIC
PRODCICS	CEDC	ENABLED	0	DFHEDAP	1	DFHTCL00	PURGEABLE	TRANDUMP	STATIC
PRODCICS	CEDF	ENABLED	0	DFHEDFP	1	DFHTCL00	PURGEABLE	TRANDUMP	STATIC
PRODCICS	CEDX	ENABLED	0	DFHEDFP	1	DFHTCL00	PURGEABLE	TRANDUMP	STATIC
PRODCICS	CEGN	ENABLED	0	DFHCEGN	255	DFHTCL00	PURGEABLE	TRANDUMP	STATIC
PRODCICS	CEHP	ENABLED	0	DFHCHS	1	DFHTCL00	NOTPURGEA...	TRANDUMP	STATIC
PRODCICS	CEHS	ENABLED	0	DFHCHS	1	DFHTCL00	NOTPURGEA...	TRANDUMP	STATIC
PRODCICS	CEMS	ENABLED	0	DFHEMSP	1	DFHTCL00	NOTPURGEA...	TRANDUMP	STATIC
PRODCICS	CEMT	ENABLED	0	DFHEMTP	255	DFHTCL00	NOTPURGEA...	TRANDUMP	STATIC
PRODCICS	CEOS	ENABLED	0	DFHEMSP	1	DFHTCL00	NOTPURGEA...	TRANDUMP	STATIC
PRODCICS	CEOT	ENABLED	0	DFHEOTP	255	DFHTCL00	PURGEABLE	TRANDUMP	STATIC
PRODCICS	CEPW	ENABLED	0	DFHPSOP	254	DFHTCL00	NOTPURGEA...	TRANDUMP	STATIC
PRODCICS	CESC	ENABLED	0	DFHCESC	255	DFHTCL00	NOTPURGEA...	TRANDUMP	STATIC
PRODCICS	CESF	ENABLED	0	DFHSFP	1	DFHTCL00	PURGEABLE	TRANDUMP	STATIC
PRODCICS	CESN	ENABLED	0	DFHSNP	1	DFHTCL00	PURGEABLE	TRANDUMP	STATIC
PRODCICS	CEST	ENABLED	0	DFHESTP	255	DFHTCL00	PURGEABLE	TRANDUMP	STATIC
PRODCICS	CETR	ENABLED	0	DFHCETRA	255	DFHTCL00	NOTPURGEA...	TRANDUMP	STATIC
PRODCICS	CFTS	ENABLED	0	DFHZATS	255	DFHTCL00	NOTPURGEA...	TRANDUMP	STATIC

IZE0100I Connected user SYSA to host l...m1.boeblingen.de.ibm.com on port 27283

lnx

# 2012 IBM System z Technical University

IBM CICS Explorer - C:/CICS-Work

File Edit Projekt Operations Definitions - Suchen Window Help

ISC/MRO Con TCP/IP Servic Terminals Programs Transactions TS Queues Transaction Cl Tasks Files TD Queues

CNX0211I Context: PRODCICS, Resource: LOCFILE. 14 records collected at 28.09.2012 18:07:47

Region	Name	Status	Open Status	Add	Browse	Delete	Read	Update	LSR Pool ID	DS Name
PRODCICS	BSTCNTL	✓ ENABLED	CLOSED	ADDABLE	BROWSABLE	DELETABLE	READABLE	UPDATABLE	0	VSE.BSTCN...
PRODCICS	DFHCSD	UNENABLED	CLOSED	ADDABLE	BROWSABLE	DELETABLE	READABLE	UPDATABLE	1	CICS.CSD
PRODCICS	EZACACH	✓ ENABLED	CLOSED	ADDABLE	BROWSABLE	DELETABLE	READABLE	UPDATABLE	1	
PRODCICS	EZACONF	✓ ENABLED	CLOSED	ADDABLE	BROWSABLE	DELETABLE	READABLE	NOTUPDAT...	1	
PRODCICS	IESCNTL	✓ ENABLED	OPEN	ADDABLE	BROWSABLE	DELETABLE	READABLE	UPDATABLE	1	VSE.CONT...
PRODCICS	IESLDUM	✓ ENABLED	CLOSED	ADDABLE	BROWSABLE	DELETABLE	READABLE	UPDATABLE	1	VSE.LDAP...
PRODCICS	IESPRB	✓ ENABLED	OPEN	ADDABLE	NOTBROW...	NOTDELET...	READABLE	UPDATABLE	1	CICS2.ONL...
PRODCICS	IESROUT	✓ ENABLED	OPEN	ADDABLE	BROWSABLE	DELETABLE	READABLE	UPDATABLE	1	VSE.MESSA...
PRODCICS	IESTRFL	✓ ENABLED	OPEN	NOTADDABLE	NOTBROW...	NOTDELET...	READABLE	NOTUPDAT...	1	VSE.TEXT...
PRODCICS	INWFILE	✓ ENABLED	CLOSED	ADDABLE	BROWSABLE	DELETABLE	READABLE	UPDATABLE	1	PC.HOST.T...
PRODCICS	RFSDIR1	✓ ENABLED	CLOSED	ADDABLE	BROWSABLE	DELETABLE	READABLE	UPDATABLE	1	CICREX.FP...
PRODCICS	RFSDIR2	✓ ENABLED	CLOSED	ADDABLE	BROWSABLE	DELETABLE	READABLE	UPDATABLE	1	CICREX.FP...
PRODCICS	RFSPOL1	✓ ENABLED	CLOSED	ADDABLE	BROWSABLE	DELETABLE	READABLE	UPDATABLE	1	CICREX.FP...
PRODCICS	RFSPOL2	✓ ENABLED	CLOSED	ADDABLE	BROWSABLE	DELETABLE	READABLE	UPDATABLE	1	CICREX.FP...

IZE0100I Connected user SYSA to host l...m1.boeblingen.de.ibm.com on port 27283

inx



## *More Information*

... on VSE home page: <http://ibm.com/vse>

- Hints and Tips for :
  - z/VSE V4.3: <ftp://public.dhe.ibm.com/eserver/zseries/zos/vse/pdf3/zvse43/hintbmm2.pdf>
- 64 bit virtual information:
  - IBM z/VSE Extended Addressability, Version 5 Release 1
  - IBM z/VSE System Macro Reference, Version 5 Release 1
- CICS Explorer: <http://www-01.ibm.com/software/htp/cics/explorer/>
- IBM Redbooks:
  - Introduction to the New Mainframe: z/VSE Basics  
<http://www.redbooks.ibm.com/abstracts/sg247436.html?Open>
  - **Security on IBM z/VSE – new update available**  
<http://www.redbooks.ibm.com/Redbooks.nsf/RedbookAbstracts/sg247691.html?Open>
  - z/VSE Using DB2 on Linux for System z  
<http://www.redbooks.ibm.com/abstracts/sg247690.html?Open>