



IBM System z Technical University



October 4–8, 2010 — Boston, MA

Rational Developer for System z for z/VSE Development

zDO52

Ingo Franzki & Wilhelm Mild, IBM



Authorized

IBM | Training

© 2010 IBM Corporation

Trademarks

The following are trademarks of the International Business Machines Corporation in the United States, other countries, or both.

Not all common law marks used by IBM are listed on this page. Failure of a mark to appear does not mean that IBM does not use the mark nor does it mean that the product is not actively marketed or is not significant within its relevant market.

Those trademarks followed by ® are registered trademarks of IBM in the United States; all others are trademarks or common law marks of IBM in the United States.

For a complete list of IBM Trademarks, see www.ibm.com/legal/copytrade.shtml:

*, AS/400®, e business(logo)®, DBE, ESCO, eServer, FICON, IBM®, IBM (logo)®, iSeries®, MVS, OS/390®, pSeries®, RS/6000®, S/30, VM/ESA®, VSE/ESA, WebSphere®, xSeries®, z/OS®, zSeries®, z/VM®, System i, System i5, System p, System p5, System x, System z, System z9®, BladeCenter®

The following are trademarks or registered trademarks of other companies.

Adobe, the Adobe logo, PostScript, and the PostScript logo are either registered trademarks or trademarks of Adobe Systems Incorporated in the United States, and/or other countries. Cell Broadband Engine is a trademark of Sony Computer Entertainment, Inc. in the United States, other countries, or both and is used under license therefrom.

Java and all Java-based trademarks are trademarks of Sun Microsystems, Inc. in the United States, other countries, or both.

Microsoft, Windows, Windows NT, and the Windows logo are trademarks of Microsoft Corporation in the United States, other countries, or both.

Intel, Intel logo, Intel Inside, Intel Inside logo, Intel Centrino, Intel Centrino logo, Celeron, Intel Xeon, Intel SpeedStep, Itanium, and Pentium are trademarks or registered trademarks of Intel Corporation or its subsidiaries in the United States and other countries.

UNIX is a registered trademark of The Open Group in the United States and other countries.

Linux is a registered trademark of Linus Torvalds in the United States, other countries, or both.

ITIL is a registered trademark, and a registered community trademark of the Office of Government Commerce, and is registered in the U.S. Patent and Trademark Office.

IT Infrastructure Library is a registered trademark of the Central Computer and Telecommunications Agency, which is now part of the Office of Government Commerce.

* All other products may be trademarks or registered trademarks of their respective companies.

Notes:

Performance is in Internal Throughput Rate (ITR) ratio based on measurements and projections using standard IBM benchmarks in a controlled environment. The actual throughput that any user will experience will vary depending upon considerations such as the amount of multiprogramming in the user's job stream, the I/O configuration, the storage configuration, and the workload processed. Therefore, no assurance can be given that an individual user will achieve throughput improvements equivalent to the performance ratios stated here.

IBM hardware products are manufactured from new parts, or new and serviceable used parts. Regardless, our warranty terms apply.

All customer examples cited or described in this presentation are presented as illustrations of the manner in which some customers have used IBM products and the results they may have achieved. Actual environmental costs and performance characteristics will vary depending on individual customer configurations and conditions.

This publication was produced in the United States. IBM may not offer the products, services or features discussed in this document in other countries, and the information may be subject to change without notice. Consult your local IBM business contact for information on the product or services available in your area.

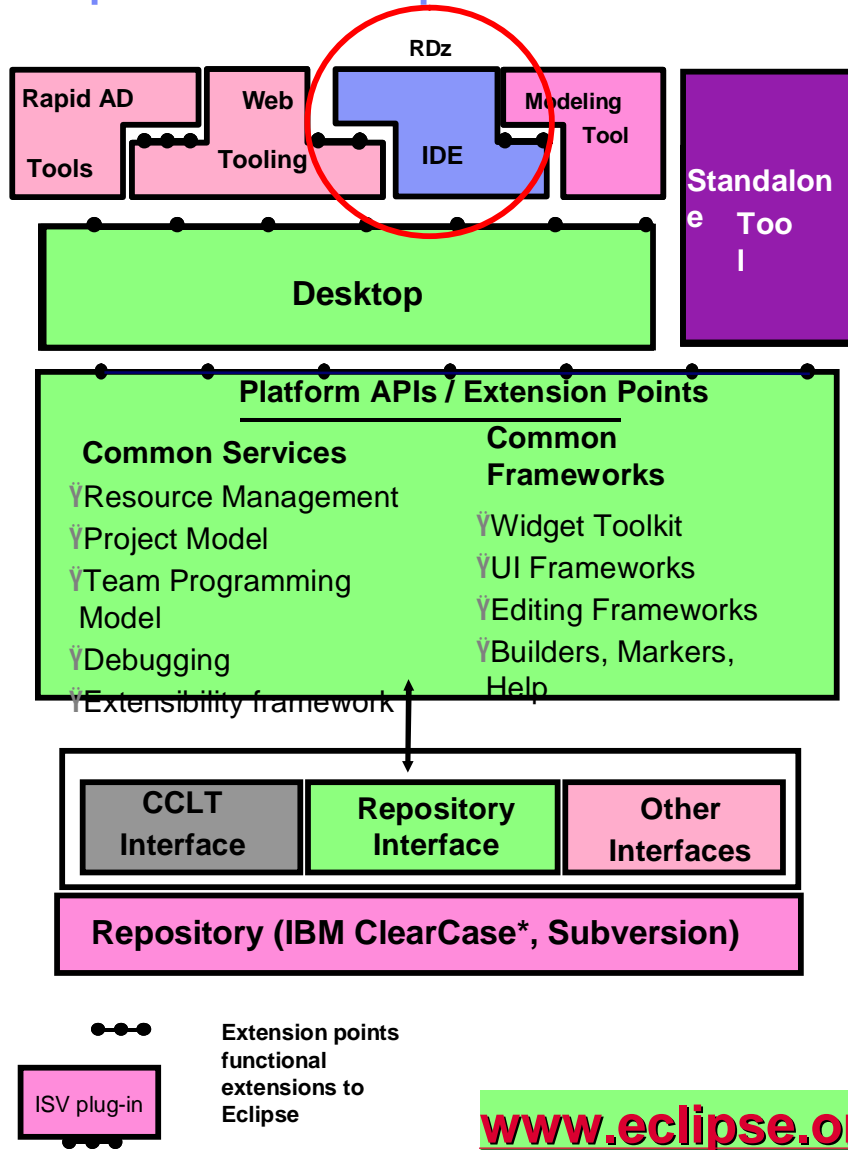
All statements regarding IBM's future direction and intent are subject to change or withdrawal without notice, and represent goals and objectives only.

Information about non-IBM products is obtained from the manufacturers of those products or their published announcements. IBM has not tested those products and cannot confirm the performance, compatibility, or any other claims related to non-IBM products. Questions on the capabilities of non-IBM products should be addressed to the suppliers of those products.

Prices subject to change without notice. Contact your IBM representative or Business Partner for the most current pricing in your geography.



Eclipse – the open Standard for application development



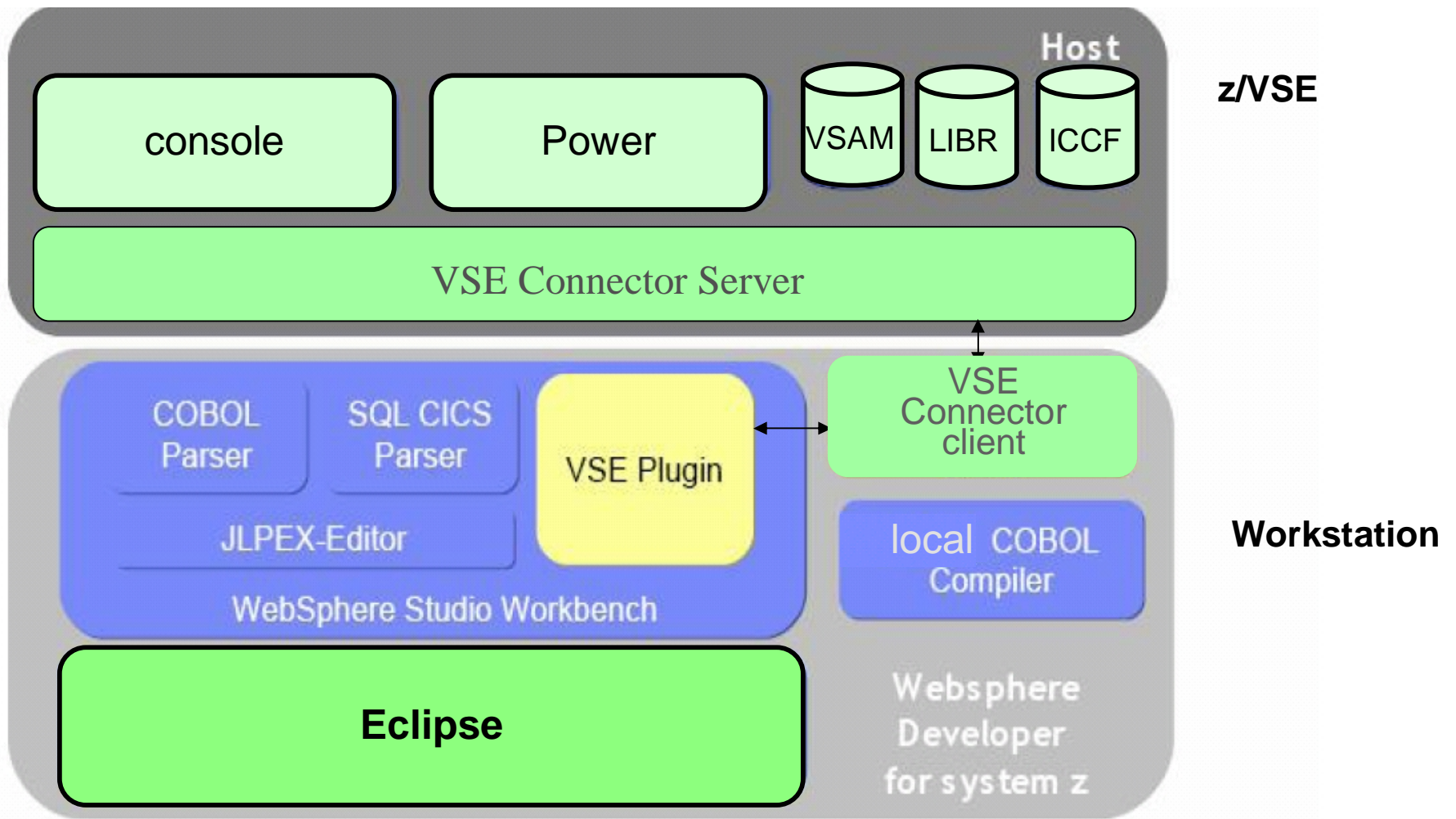
www.eclipse.org

What is Eclipse about:

- § **Open source development framework**
 - with modern Editors
 - syntax help & check
 - semantic check
- § **Centralized source code maintenance**
 - entire source code in central Repository
 - cross platform project administration
- § **Versioning software interface**
 - CVS, Subversion, or IBM ClearCase
 - automatic Workgroup-control
 - i.e. development groups, system group
- § **Open for ISVs development Plug-Ins**
 - Integrated Development Environments (IDE)
 - for System z (WDz, RDz)
 - for Java, COBOL, PL/I, ASM,C
 - Application analysis and optimization
 - Analyze the applications and workflows with graphical correlations
 - IBM HATS Development Plug-In (LVC xxx)
 - develop new front-ends to 3270 apps.
 - IBM EGL development Plug-In for z/VSE
 - follow-on to Visual Age Generator

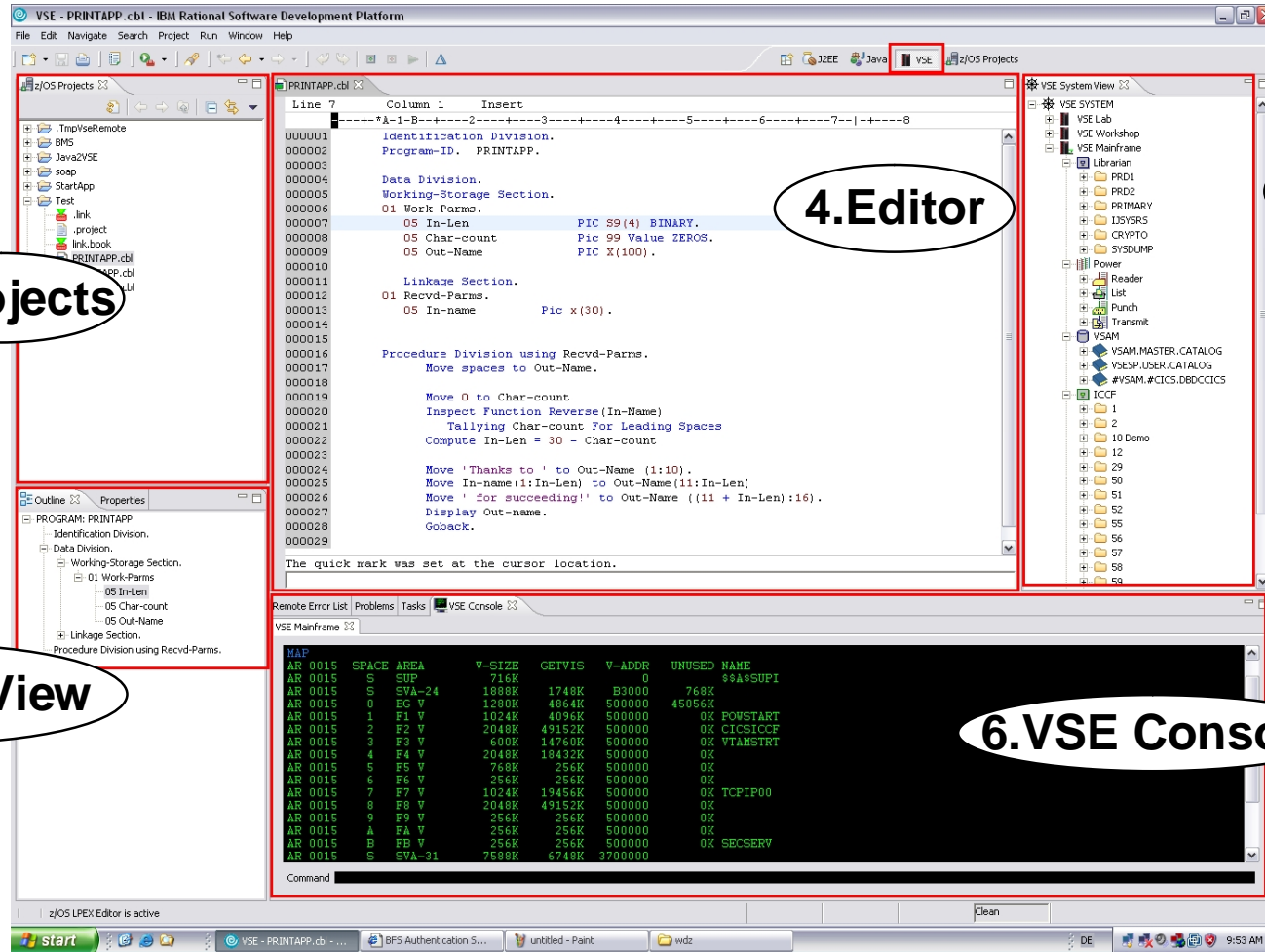


IBM Rational Developer for System z (RDz) with z/VSE Development Plug-in



IBM Rational Developer (RDz) in z/VSE perspective

1.Perspective



3.Projects

4.Editor

2.View

5.Outline View

6.VSE Console



IBM Rational Developer (RDz) in z/VSE perspective

1.Perspective

The screenshot shows the IBM Rational Developer (RDz) interface with the following components:

- z/OS Projects:** A tree view on the left showing project files like PRINTAPP.cbl and STARTAPP.cbl.
- VSE System View:** A tree view on the right showing system components like VSE SYSTEM, VSE Lab, and VSE Mainframe.
- VSE Terminal:** The central console window displaying a VSE login prompt and system information.
- Outline View:** A view at the bottom left showing the program structure for PRINTAPP.
- VSE Console:** A view at the bottom right displaying a memory map (MAP) table.

2.View

3.Projects

VSE Terminal

5.Outline View

6.VSE Console



Conclusion: Development for all platforms with one tool set

§ A modern tool set to support z/VSE development and maintenance

- modern editor for enhanced productivity
- tools to analyze and optimize existent applications and workflow

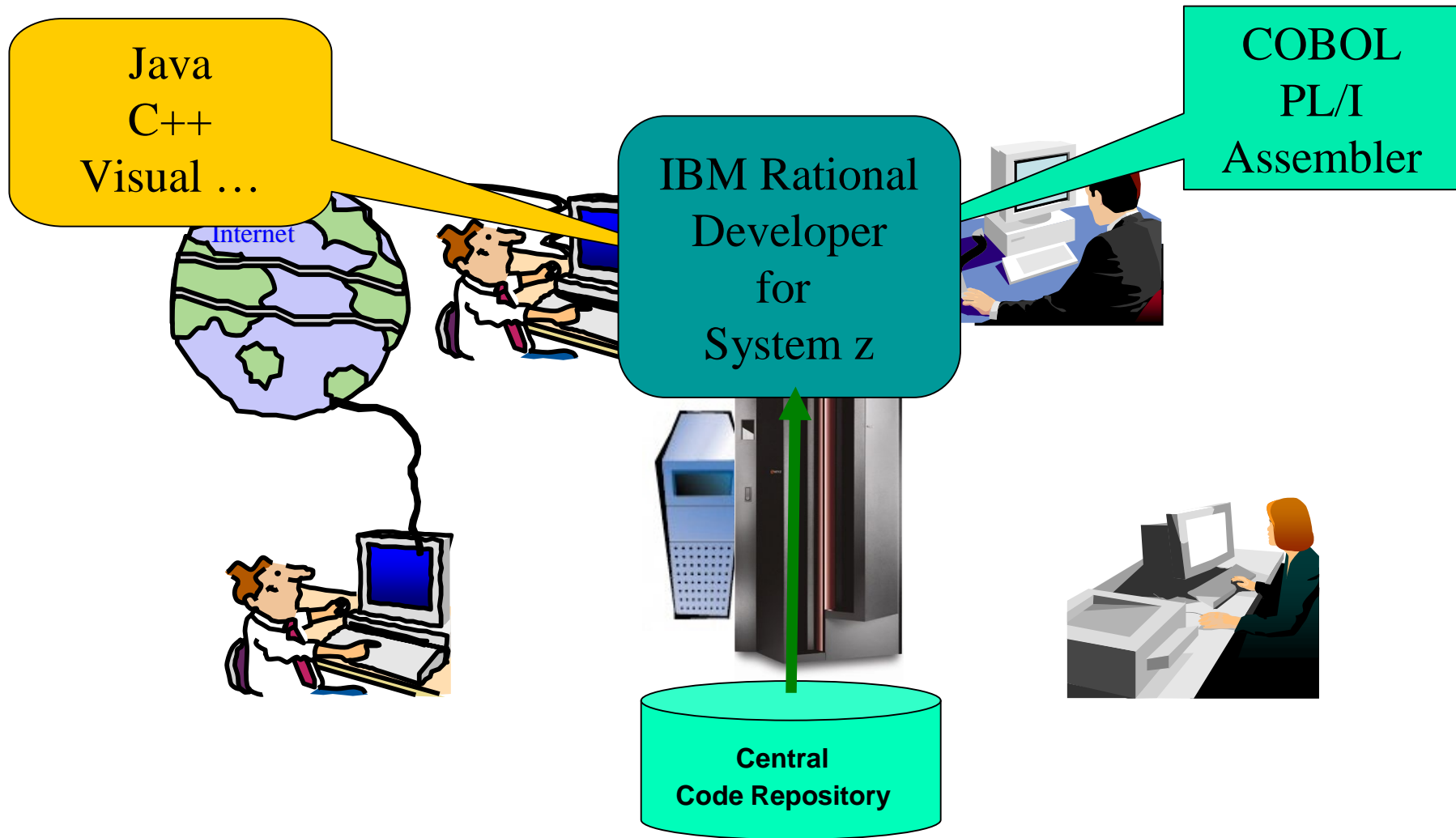
§ Common framework for enterprise development

- standard for all developers
- example: z/VSE with COBOL, Linux on System z with Java
- easy skill transfer

§ Open source framework

- commonly thought in schools and universities
- smooth introduction of new developers to the mainframe

Eclipse – an open Integrated Development Environment for the enterprise



Questions ?

