

E51

Approaches to Application Development for z/VSE

Wilhelm Mild

IBM System z Expo

September 17-21, 2007
San Antonio, TX



Trademarks

The following are trademarks of the International Business Machines Corporation in the United States and / or other counties.

CICS*	IBM*	Virtual Image Facility
DB2*	IBM logo*	VM/ESA*
DB2 Connect	IMS	VSE/ESA
DB2 Universal Database	Intelligent Miner	z/VSE
e-business logo*	Multiprise*	VisualAge*
Enterprise Storage Server	MQSeries*	VTAM*
HiperSockets	OS/390*	WebSphere*
	S/390*	xSeries
	SNAP/SHOT*	z/Architecture
		z/VM
		zSeries
		System z

* Registered trademarks of IBM Corporation

The following are trademarks or registered trademarks of other companies.

LINUX is a registered trademark of Linus Torvalds

Tivoli is a trademark of Tivoli Systems Inc.

Java and all Java-related trademarks and logos are trademarks of Sun Microsystems, Inc., in the United States and other countries

UNIX is a registered trademark of The Open Group in the United States and other countries.

Microsoft, Windows and Windows NT are registered trademarks of Microsoft Corporation.

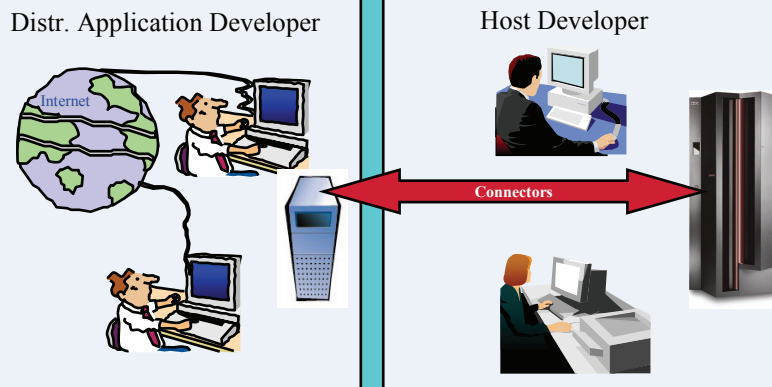
SET and Secure Electronic Transaction are trademarks owned by SET Secure Electronic Transaction LLC.

Intel is a registered trademark of Intel Corporation.

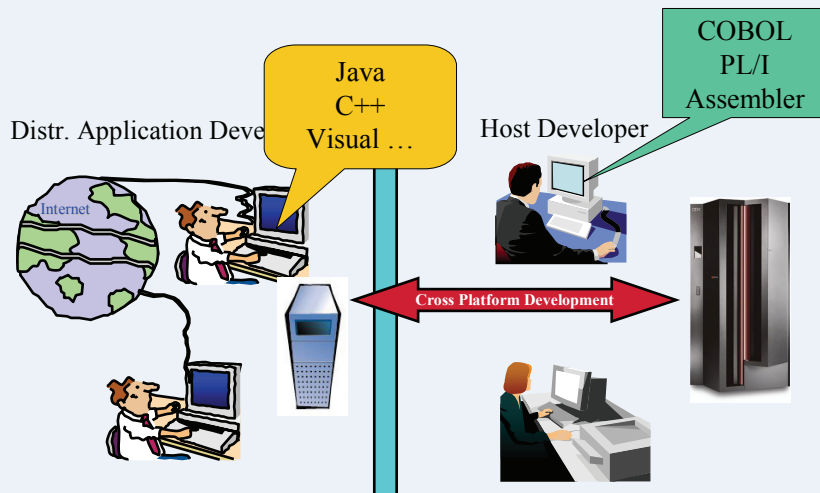
ACUCORP is a registered Trademark of ACUCORP Corporation

IT environments and their challenge

f Two IT worlds want a common solution

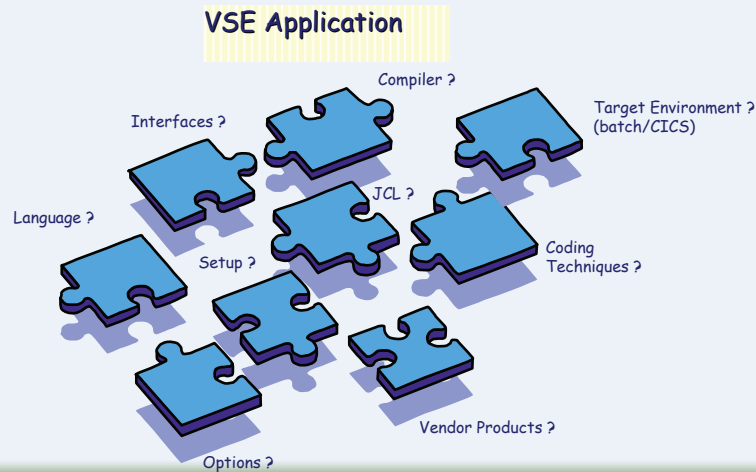


'Distributed' Development Landscape...



Native VSE Application

- Typical interdependencies ...



Goals of today's IT

- **Optimization of Development**
 - performant, less resources
- **Omit redundancies**
 - optimize processes
- **Reduce IT complexity**
 - efficient data flows and data stores

VSE Development options

- **Existing applications**
 - 1) Use of modern tools for development (i.e. PC tools instead of ICCF)
 - 2) Modernize – develop graphical interfaces (in Java or COBOL)
- **New Applications for VSE**
 - 1) Use of modern development environments (i.e. Eclipse based)
 - 2) Cross-Platform solution development environments (i.e. 4GL Methods)

VSE existing application considerations

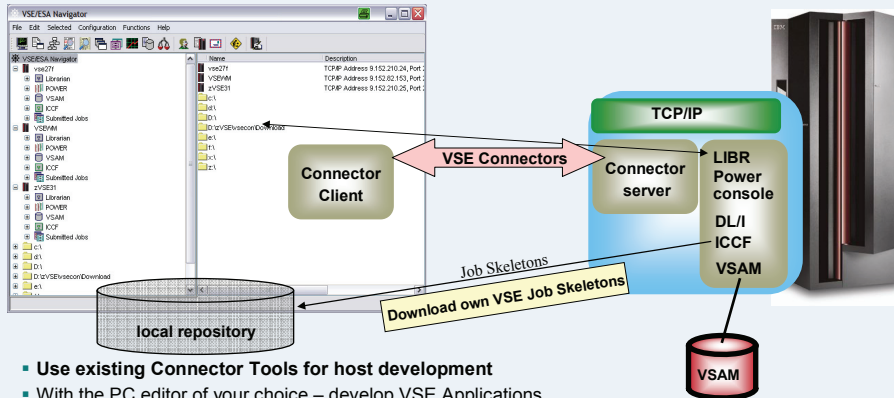
- **Interactive Interface Support to build your applications**
 - Primary Library, OPTION 8, in order to build your applications
- **JCL Skeletons for various application languages and call structures**
 - Batch main/subroutines, CICS or DB2 target environments etc.
 - Considerations for suitable translate and compile steps
 - Language independent stubs such as CICS DFHELII ...
 - Appropriate compile and pre-processor options etc.
- **Security Issues**
 - Every CICS TS transaction needs to be "security-enabled" prior to first execution
 - The IUI provides associated support via selection path "Resource Definition" --> "Define Transaction Security"
- **Program Maintenance from outside-VSE environment**
 - needs to ensure use of current compile skeletons, related options, stubs etc.

Existing Applications

(1) Use of existing modern tools for z/VSE development

PC/Workstation with VSE Navigator

z/VSE Server



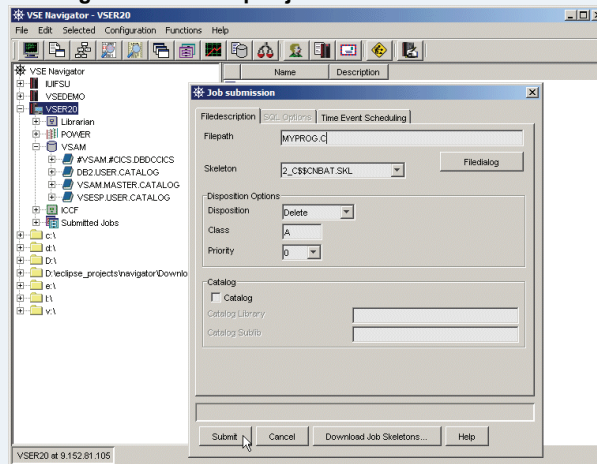
- Use existing Connector Tools for host development
- With the PC editor of your choice – develop VSE Applications
- Use Helper plugins for PC – VSE process preparation (Compile, Analysis)

Existing Applications

(1) Use of existing modern tools for z/VSE development

Helper plugins

- VSE Navigator: VSE compile/job submission ...



Existing Applications

(1) Use of existing modern tools for z/VSE development

Helper plugins

- **JCalc_LEVSE Tool**
 - SVA related Phase allocations – report, downloaded to PC ...
<http://www.ibm.com/servers/eserver/zseries/zvse/downloads/tools.html>

- **JLink_LEVSE Tool**
 - Analyze lists + generate report in Browser
<http://www.ibm.com/servers/eserver/zseries/zvse/downloads/tools.html>

- **JDisplay_AR_Commands**
 - Java front-end in WebSphere environment, connecting to z/VSE server, exploiting VSE Connector API for communication ...
<http://www.ibm.com/servers/eserver/zseries/zvse/products/connectors.html>

[z/VSE Home](#) → [Downloads](#) → [Tools](#)

JCalc_LEVSE Tool (Part 2)

□ The basic functionality

- Allocate descriptions to modules identified (focus on SVA eligible routines)
- Prepare a JTable overall view (with option to calculate a storage summary)

Routine Name	Description	Decimal Size	SVA Eligible	AMODE	RMODE	SVA List
CEEBINIT	Initialization/termination for batch	53856	YES	24	24	\$SVACEE
CEEBLIBM	Library routine retention init/term	20184	YES	ANY	24	\$SVACEE
CEEBLRR	Library routine retention interface	920	YES	ANY	24	\$SVACEE
CEEBNATX	Null Abnormal termination exit	2	YES	31	ANY	\$SVACEE
CFFRXTAN	Batch Abnormal termination exit table	274	YES	31	ANY	-

Note: Large phases marked red, default SVA entries in blue

Buttons: Help, Calculate SVA loadlist, Cancel

- Generate VSE shared virtual area (SVA) statistics/storage report

Loadlist	SVA-31 Requirement	SVA-24 Requirement	Setup Type
\$SVACEE	1122848	272808	IBM default
\$SVAEDCM	1843420	0	IBM default
\$SVAEDC	2291284	160	Optional
\$SVAIRMM	212928	37024	Recommended
\$SVAIRM	282719	37024	Optional
\$SVAIGZM	155864	0	Recommended
\$SVAIGZ	411240	189232	Optional

Buttons: OK

Existing Applications

(1) Use of existing modern tools for z/VSE development

Helper plugins

JLink_LEVSE_Analyzer Tool (Part 1)

Cross-check VSE Compile/link Lists

- GUI application front-end (3 step user-interaction: file chooser, build, show report)
- VSE application summary overview (e.g. resources involved, coding techniques ...)
- Event/context specific summaries & explanation (e.g. compile- options/messages ...)
- Specific warnings ... (e.g. indicators for improper stub usage etc.)



JLink_LEVSE_Analyzer Tool (Part 2)

Sample report generated (web browser view)

C Prelinker - Object Resolution events

CEESETL	Unresolved prelink module reference. Also check linkage editor resolution
WARNING EDC4015:	Unresolved references are detected. Verify if the reference(s) given in this section are later resolved by the linkage editor

C Prelinker - Writable Static events

INFORMATIONAL EDC4013:	No map contents displayed as no writable static was found
-------------------------------	---

Linkage editor - Autolink events

CEESG003	Signature module for CVSE has been linked into application phase	Library reference not visible in link list (typical for C)
CEESTART	Compiler generated default entry point available	Library reference not visible in link list (typical for C)
EDCINPL	LE/C initialization triggered (might involve an assembler program with EDCPRLG and EDCEPIL macros coded)	Library reference not visible in link list (typical for C)
PRINTF	C Run-Time library function - printf (Format and Write Data)	Library reference not visible in link list (typical for C)

Linkage editor - Unresolved Reference events

EXTRN CEESETL	Do not code the CEESETL callable service. For C routines the setlocale() function should be used instead
WXTRN@@DLL	Internal LE/C reference, fine to be present

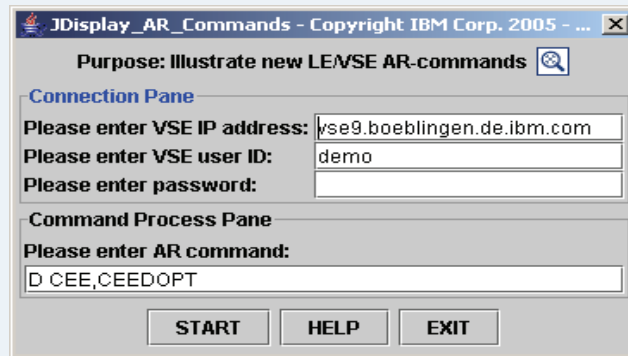
Existing Applications

(1) Use of existing modern tools for z/VSE development

Helper plugins

JDisplay_AR_Commands (Part 1)

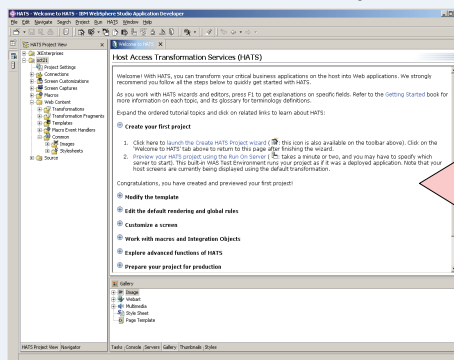
GUI Communication with VSE Console



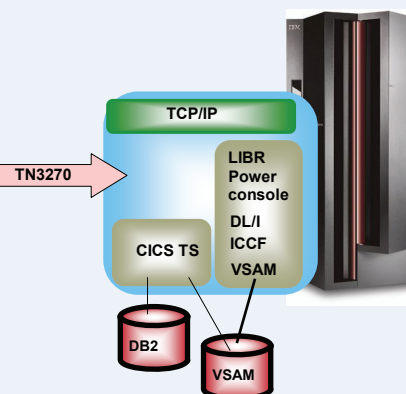
Existing Applications

(2) Modernize – Develop graphical interfaces – in Java

PC/Workstation Front-End Development



z/VSE Server



- **Application-Development – in Java** (i.e. HATS Studio or Eclipse)
- The new application accesses unchanged VSE application and data
- the new application is a web application using internet technologies

HATS Advantages:

Combine / Integrate

Host Access Transformation Server (HATS)

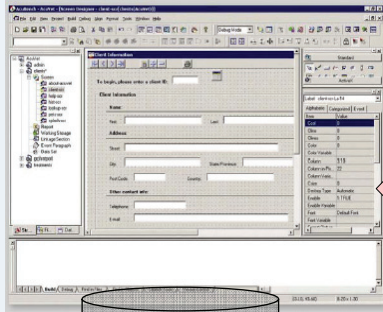
- A Web-to-host integrator, HTML emulator ...
- rules-based transformation engine, application integration ...
- converts green screens to graphical user interfaces in web applications
- improves ease-of-use of host applications.

Benefit: Easily extend existing applications to the web

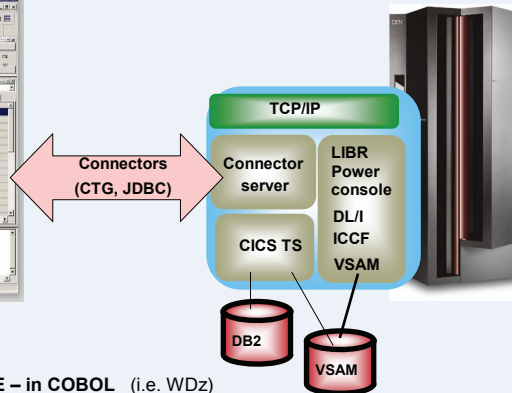
Existing and new Applications

(2) Modernize / new – Develop graphical interfaces – in Cobol

PC/Workstation COBOL Development



z/VSE Server



- Application development on PC, for VSE – in COBOL (i.e. WDz)
- Use existing COBOL expertise
- COBOL Compiler and Runtime (COBOL Virtual Machine) on PC
- New application in COBOL – access to existing data and applications via Connectors (CTG, JDBC)

Existing Applications

(1) Use of existing modern tools for z/VSE development

Conclusion

- Core applications can be developed, maintained with modernized methods
- Existing development expertise is used
- increased effectiveness
- modern versioning software can be used

VSE Development options

- Existing applications**

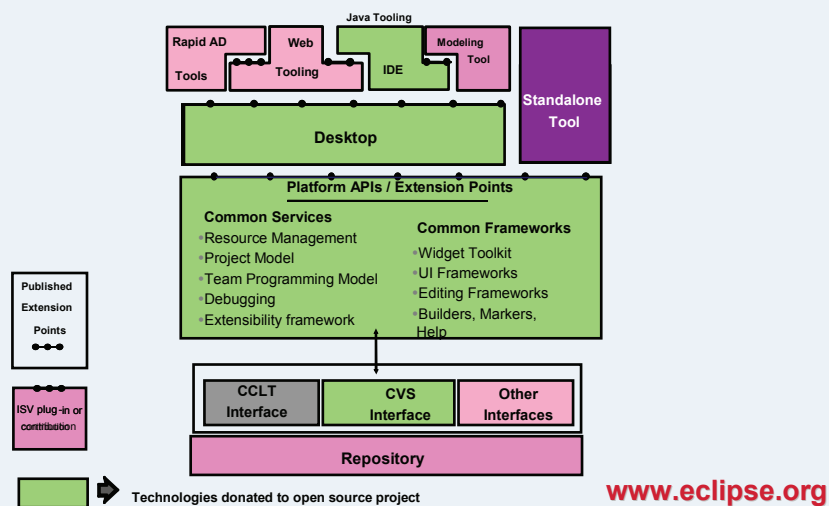
- 1) Use of modern tools for development (i.e. PC tools instead of ICCF)
- 2) Modernize – develop graphical interfaces (in Java or COBOL)

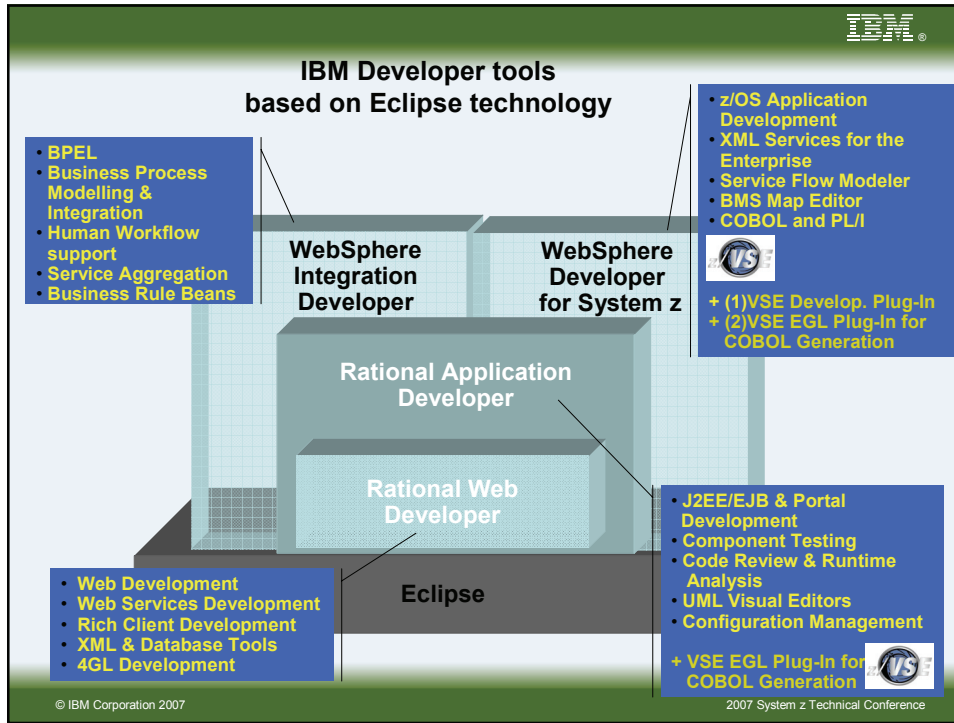
- New Application for VSE**

- 1) Use of modern development environments (i.e. Eclipse based)
- 2) Cross-Platform solution development environments (i.e. 4GL Methods)

New applications for VSE

(1) Use of modern development environment !





IBM

Rational Application Developer (RAD)

Integrated Development Environment (IDE)

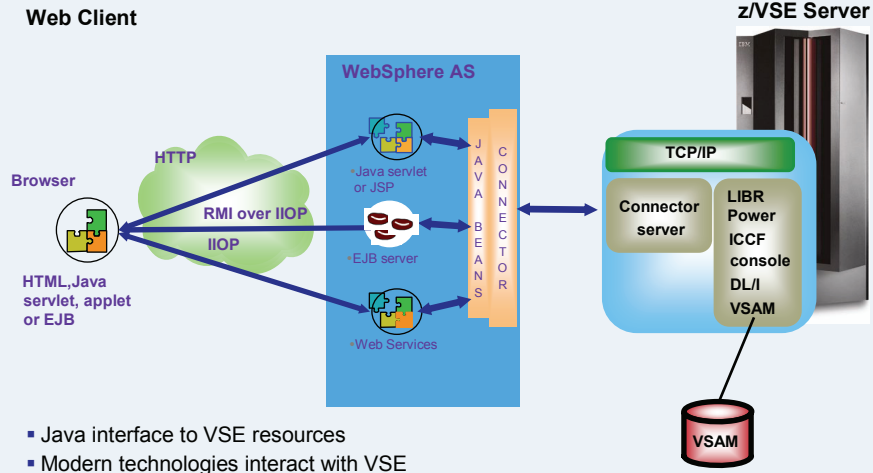
Functionality for Enterprise Development

- **Additional perspectives**
EGL ...
- **Migration Assistance:**
EGL V6 Migration, VisualAge Generator Migration
- **Control Windows/Views**
EGL generation, SQL errors ...
- **Additional developer tools:**
e.g. page designer, web site designer, portal tools, service data objects, XML tools, UML Visual Editor etc.

Tech-article: **IBM Rational Developer: Powerful support for rapid Java and J2EE development**
<http://www.ibm.com/developerworks/rational/library/dec04/parkin/>

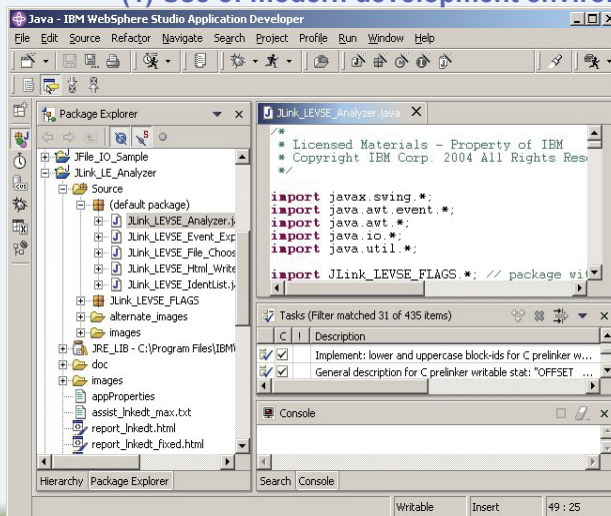
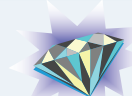
© IBM Corporation 2007 2007 System z Technical Conference

Real time access to VSE data and subsystems with Java-Based Connector



- Java interface to VSE resources
- Modern technologies interact with VSE

Rational Application Developer (RAD) New applications for VSE (1) Use of modern development environment !



Based on the eclipse platform

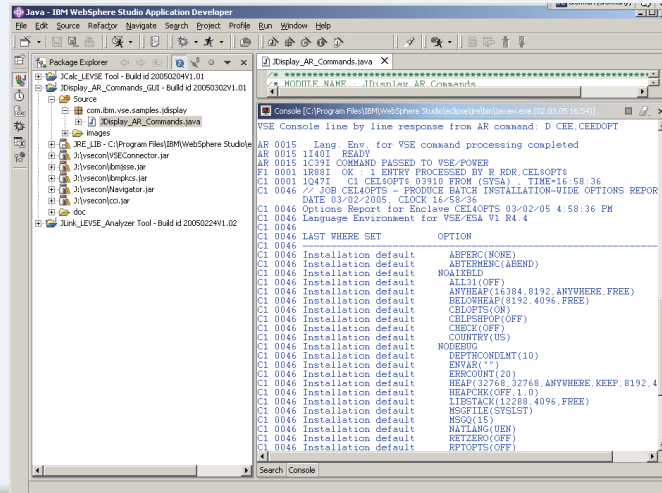
<http://www.eclipse.org>

Open architecture for integrated Web- & application development. Supports the plug-in model

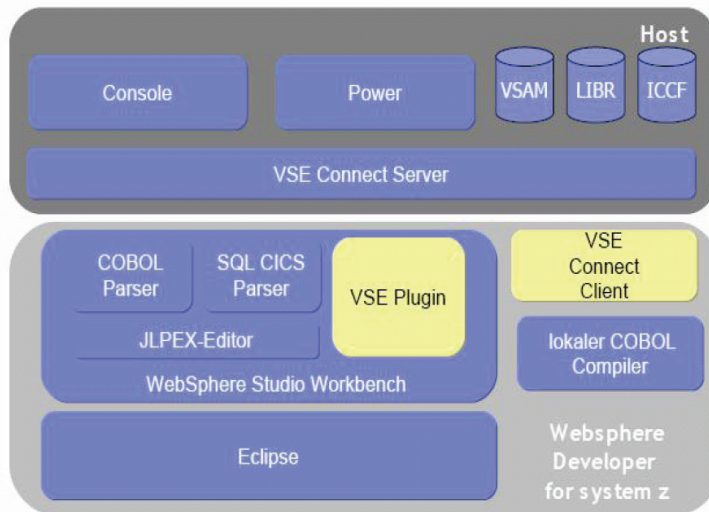
- **Different Perspectives**
Java-, Profiling-, Debugging-, CVS Repository-, J2EE-, XML ...
- **Basic Functions** like:
Project-, class-, interface-generation, code-formatting
- **Control Windows**
Source code, tasks, console-messages, package explorer ...
- **Developer Tools** like:
Profile-agents for analysis, javadoc generator
- **Tools for execution, test**

JDisplay_AR_Commands tool

VSE Console Messages in WebSphere Development Environment



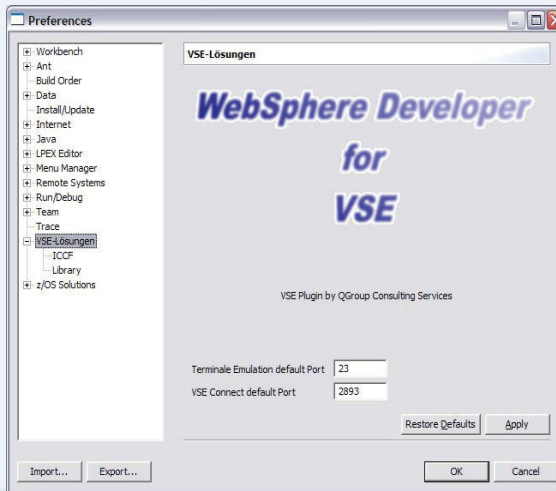
z/VSE Plug-in for WdZ (Overview)



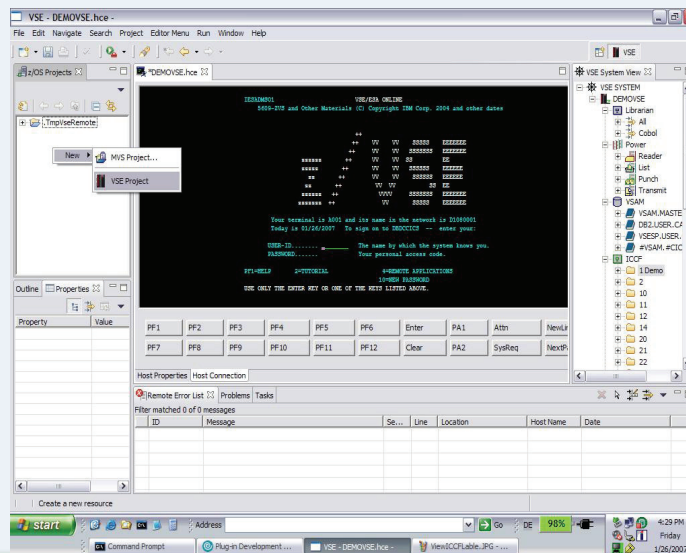
(1) Cross Platform Integrated Development Environment

Approach with WDz - WebSphere Developer for System z (*)

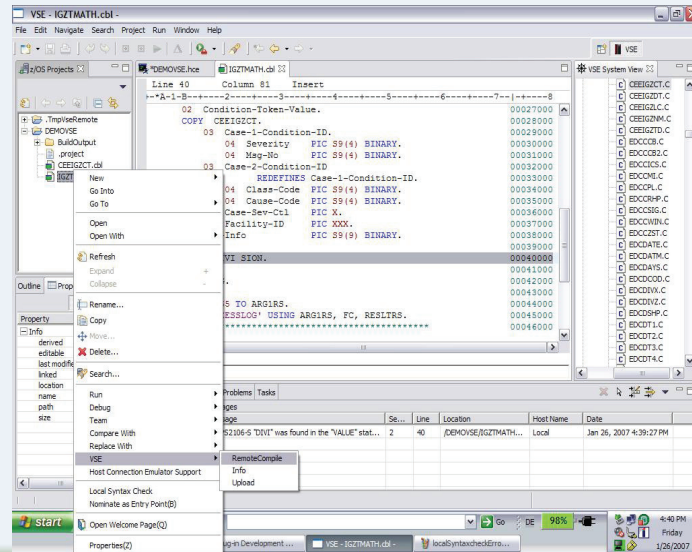
(*) In development.



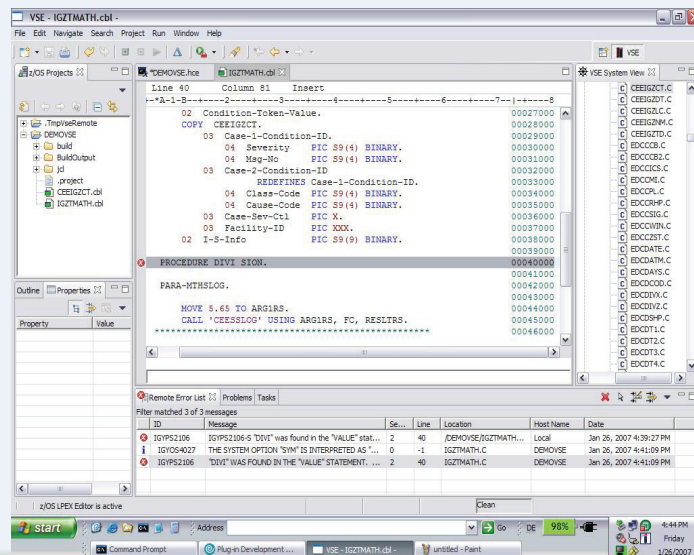
Develop a z/VSE project



z/VSE local and remote Compile



z/VSE Syntax checking and highlighting



(2) Cross Platform Solution development Approach with VisualAge Generator

**Rapid
Development**



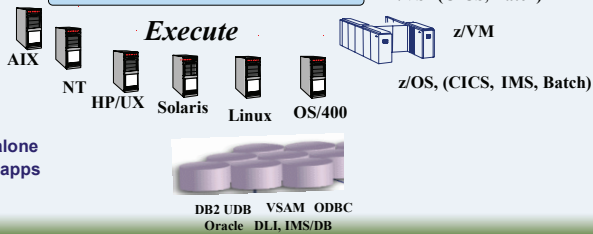
IBM 4GL history:
CSP (~1981) -> VAGen (~1994) -> EGL/ WSED (~2003)
Migration-Options available ...

Generation

Generate

Execution

GUI, Java, HTML, C++, COBOL, PL/I

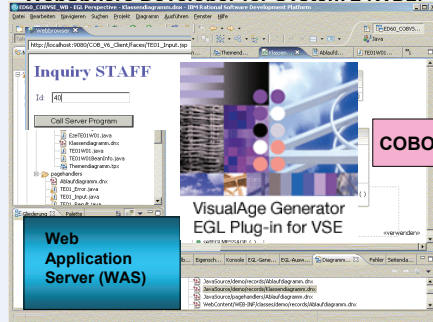


- Multiple platforms
- Client /Server Applications
- Java applets/servlets or standalone
- Multiple database/file support apps

(2) Cross Platform Solution development Approach with VisualAge Generator

*** New:** VisualAge Generator EGL Plug-in for VSE *

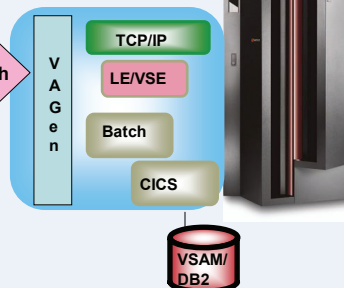
**Rational Application Developer (RAD) or
WebSphere Developer for System z (WDz)**



z/VSE

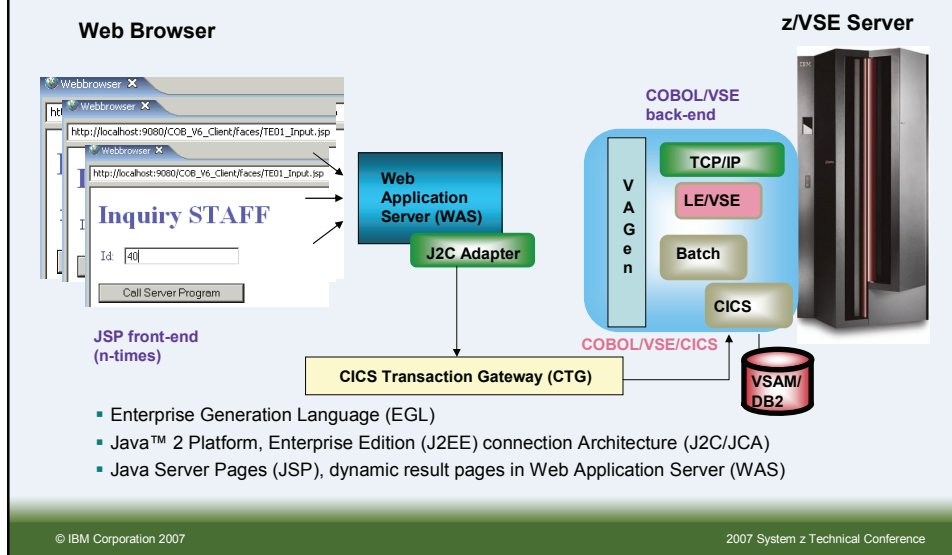
„Generate“

COBOL/CICS/batch



- Enterprise Generation Language (EGL), Visual Age Generator
- Java™ 2 Platform, Enterprise Edition (J2EE) connection Architecture (J2C/JCA)
- Java Server Pages (JSP), dynamic result page known by the Web Application Server (WAS)

Components for the 4GL runtime



Types of generated Programs via EGL

- **VSE applications**
 - **CICS applications,**
 - including the Compile/Link Jobs and CICS definitions
 - **batch applications**
 - including Compile/Link Jobs
- **It's very easy to switch the data access method (i.e from VSAM to SQL)**
- **Web applications:**
 - **Standalone (without access to VSE)**
 - **With access to Core applications (Core existing CICS, or EGL generated)**
- **Distributed Applications**
 - **Mixed applications with a client part and a VSE part in COBOL**

A 'Common' Development environment !



Eclipse is the base !

Rational Application Developer (RAD)

- **Overview RAD for WebSphere Software**
<http://www.ibm.com/software/awdtools/developer/application/index.html>
- **Download RAD V6001**
<http://www.ibm.com/support/docview.wss?uid=swg24009346>
<http://www.ibm.com/developerworks/downloads/r/rad>
- **Rational Software downloads**
<http://www.ibm.com/developerworks/websphere/downloads/plugin/>
- **Rational Technical Library**
<http://www.ibm.com/developerworks/rational/library/>
- **Rational Technical Resources + Best Practices**
<http://www.ibm.com/developerworks/rational/>
- **IBM Software Products**
<http://www.ibm.com/software/sw-bycategory/subcategory/SW740.html>

Enterprise Generation Language (EGL)

- **Visual Age Generator**
<http://www.ibm.com/software/awdtools/visgen>
- **Program Directory (includes setup prerequisites ...)**
<http://www.ibm.com/software/awdtools/visgen/library/v45docs.html>
- **Overall EGL**
 - <http://www.ibm.com/developerworks/rational/products/egl/>
- **EGL Language Resources (check for latest references - V6 level)**
 - <http://www.ibm.com/developerworks/rational/library/egldoc.html>
- **Samples / Practice**
 - EGL integration with Java using Rational Application Developer V6
http://www.ibm.com/developerworks/rational/library/05/510_java/#download
 - Generating COBOL using EGL and JSF with WebSphere Studio Enterprise Developer
http://www.ibm.com/developerworks/websphere/library/techarticles/0502_barosa/0502_barosa.html
Note: target system in this sample is not z/VSE 3.1 but can be customized !
It is recommended to use RAD V6 instead WSED !
 - Generating Java using EGL and JSF with WebSphere Studio Site Developer V5.1.2
http://www.ibm.com/developerworks/websphere/library/techarticles/0408_barosa/0408_barosa.html

z/VSE Additional Information

- z/VSE Home Page
<http://www.ibm.com/servers/eserver/zseries/zvse/>
- z/VSE Solutions and Utilities
<http://www-1.ibm.com/servers/eserver/zseries/zvse/solutions/>



- e-business Solutions for VSE/ESA SG24-5662
- e-business Connectivity for VSE/ESA SG24-5950
- CICS Transaction Server for VSE/ESA
 CICS Web Support SG24-5997-00
- *Handbook For WebSphere 5*
(Connectors to z/OS and VSE) SG24-7042

We appreciate your comments on z/VSE: zvse@de.ibm.com