

VSE/ESA 2.5 / 2.6

- e-business Connectors and Utilities -

Hans-Dieter Wehle
IBM Development
hdwehle@de.ibm.com

Agenda

VSE Connector Client - What's new

VSE/VSAM JDBC Driver

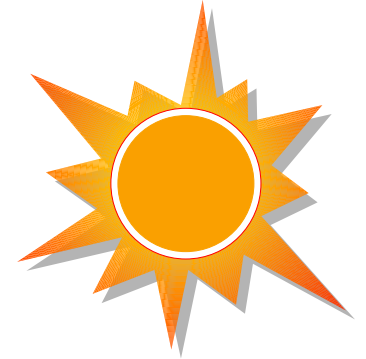
VSE Redirector Server

VSE Virtual Tape Server Utility

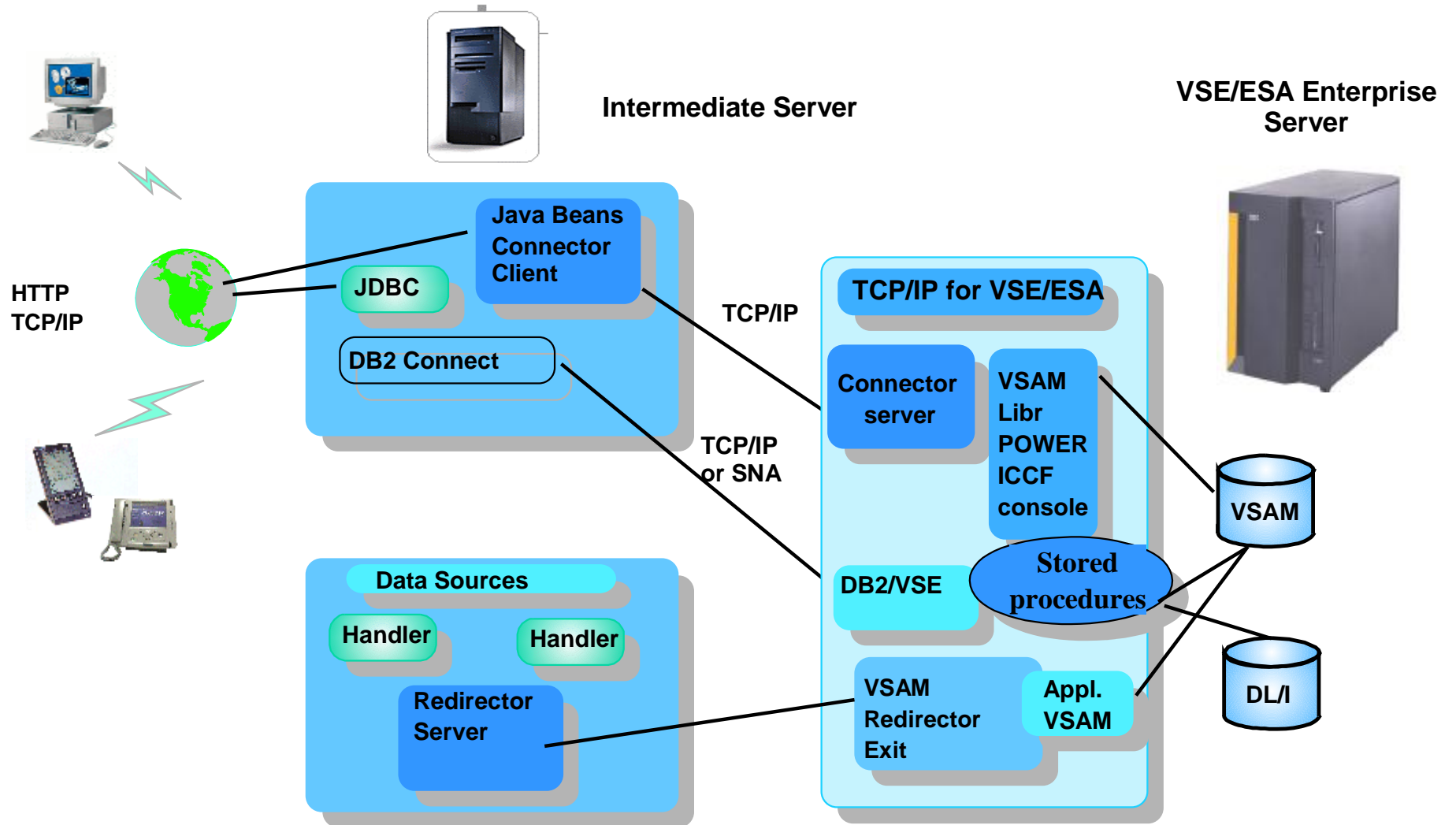
VSE/VSAM Maptool, VSEPrint Utility

JConVSE, JDataMig

TCP/IP for VSE/ESA Configuration Dialog

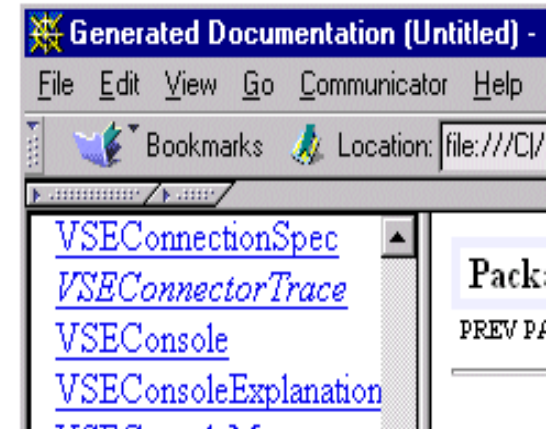


VSE/ESA e-business connectors



VSE 2.6 Connector Client - News

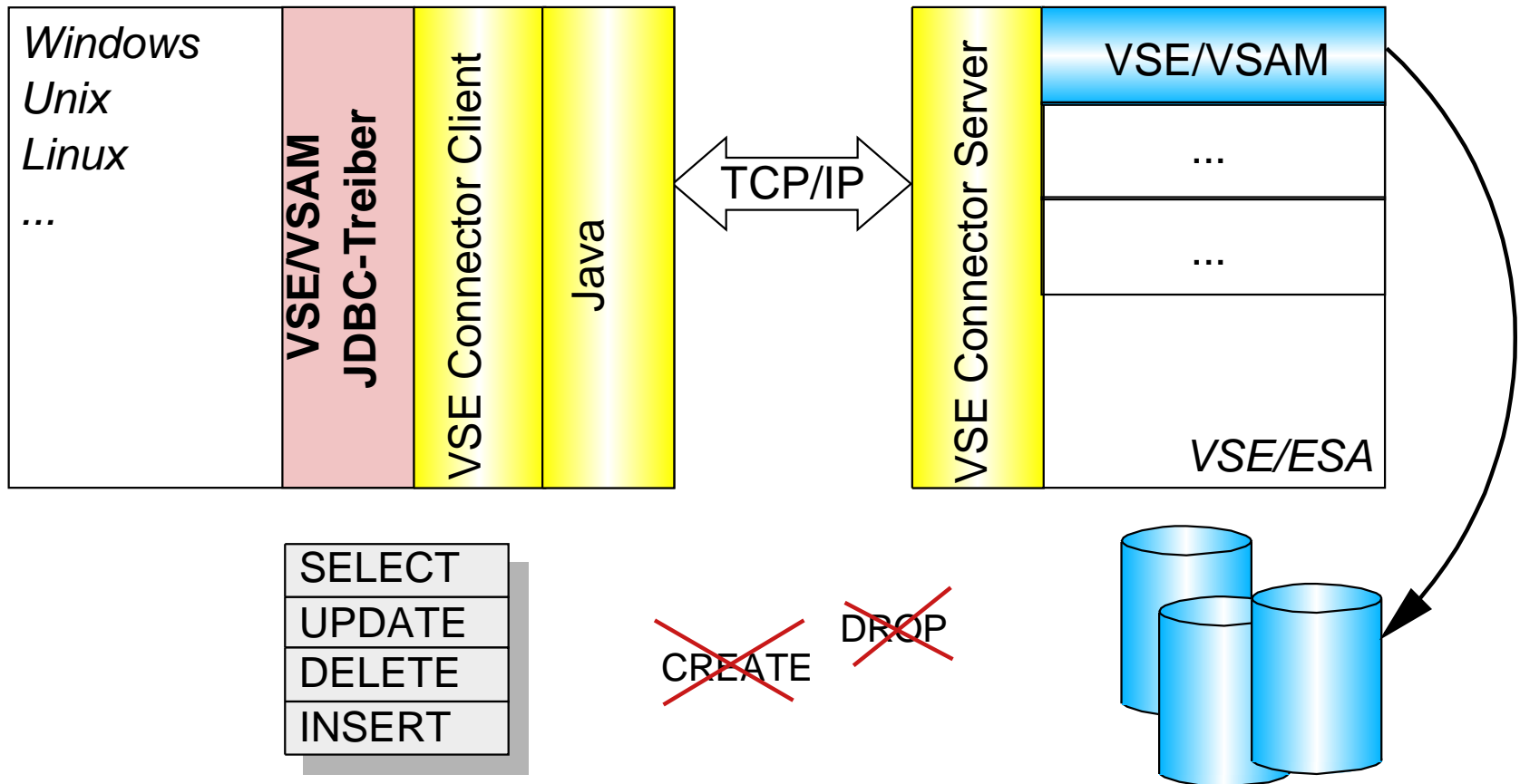
- Internet security has been improved with Secure Sockets Layer
- Support the Java 2 (J2EE) standard
- SHARE OPTION 4, no longer necessary
- VSE/VSAM JDBC Driver
 - ▶ Provides SQL queries against VSAM files



VSE/VSAM JDBC Driver - Part of VSE Connector Client

Provides SQL queries against VSE/VSAM data

Implementation Overview



VSE/VSAM JDBC Driver - Part of VSE Connector Client

VSE/VSAM Mapping

H	a	n	s		M	u	e	l	l	e	r			F	e	l	d	w	e	g				1
J	o	h	a	n	n	e	s		K	u	r	z			A	m		S	e	e				5
P	a	u	l		K	a	h	n						H	a	u	p	t	s	t	r	.		7

Data field

Data field

Data field

VSE/VSAM SQL

```
SELECT *  
FROM VSESP.USER.CATALOG\FLIGHT.ORDERING.ORDERS\ORDERS_MAP
```

Catalog | Cluster | Map

```
INSERT INTO  
VSESP.USER.CATALOG\FLIGHT.ORDERING.FLIGHTS\FLIGHTS_MAP  
(flight_number,start,destination,departure,arrival,seats,reserved,airline)  
SELECT fflight_number * 32, 'Bonn', destination, departure, arrival, fseats, reserved, airline  
FROM VSESP.USER.CATALOG\FLIGHT.ORDERING.FLIGHTS\FLIGHTS_MAP F INNER JOIN  
VSESP.USER.CATALOG\FLIGHT.ORDERING.ORDERS\ORDERS_MAP O USING (flight_number)
```

IBM @server

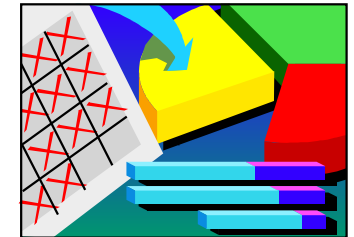
VSE/VSAM Maptool

H	a	n	s		M	u	e	l	l	e	r		F	e	l	d	w	e	g			1	
J	o	h	a	n	n	e	s		K	u	r	z		A	m		S	e	e				5
P	a	u	l		K	a	h	n						H	a	u	p	t	s	t	r	.	7

Data field

Data field

Data field



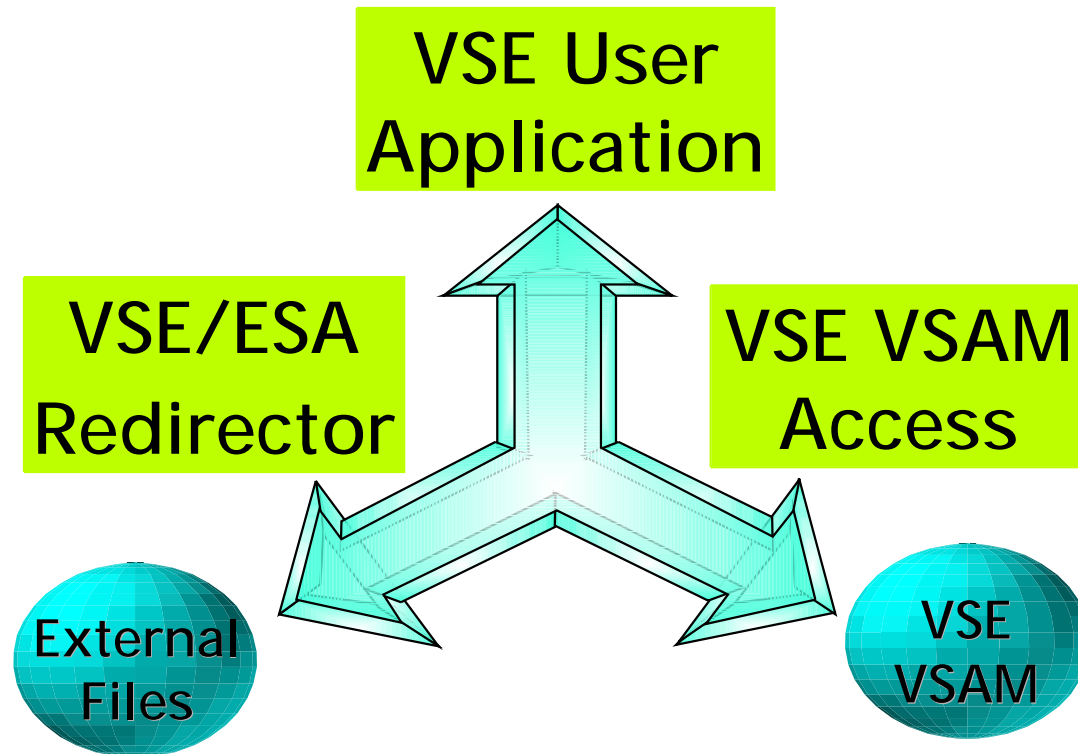
Java-based dialog to generate VSAM data maps

- **Generate VSAM data maps from an XML file, or from a COBOL copy book.**
- **Reduce your workload for VSAM map defenitions**

IBM @server

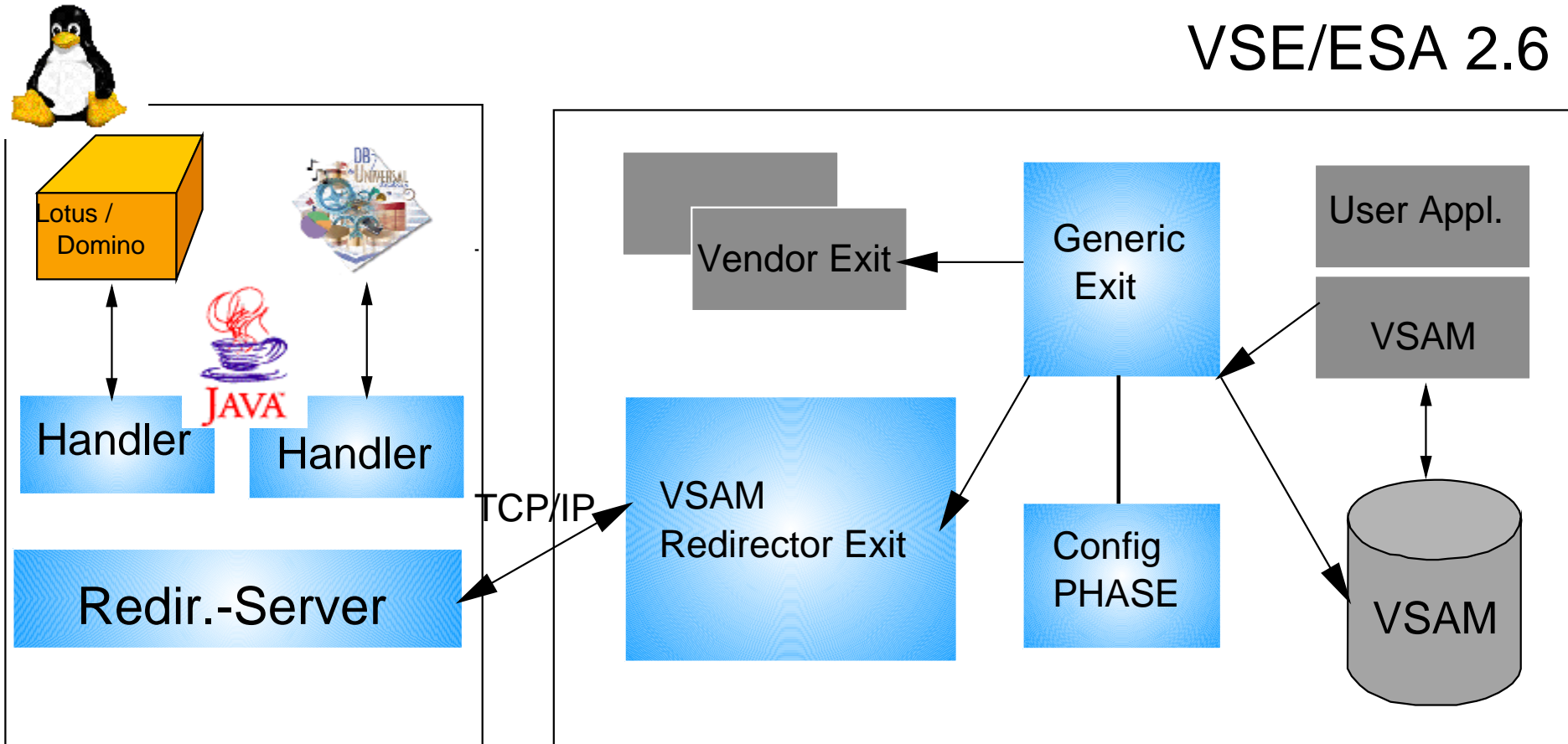
VSE VSAM Redirector Server

Existing applications work with data on any Java-enabled platform.



VSE VSAM Redirector Server

VSE/ESA 2.6



Config PHASE:

Catalog	Cluster	Exit	Owner	IP	Port	HandlerName	Option
file.a.cat	file.a	Inxredir	(VSAM/Red.)	100.100.100.1	0815	lotus	user=;

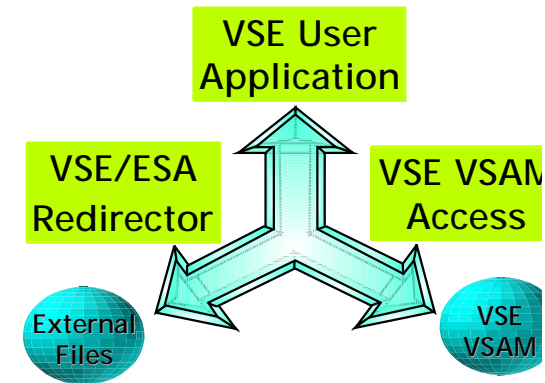
IBM @server

VSE VSAM Redirector Server

- **The VSAM Redirector Server is installed on each Java platform.**

- It is a Java program that:

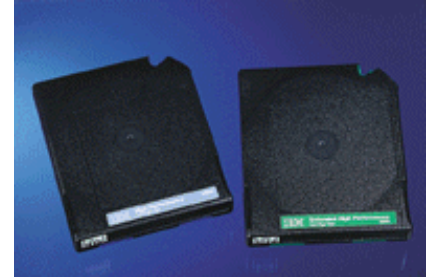
- Is responsible for connection-handling
- Is responsible for data conversion.
- Builds the interface to the different file system request handlers.
- Generates error messages that are the same as those generated before VSAM datasets were migrated. Therefore your application programs do not need to be amended for changes in error-message handling.



VSE Virtual Tape Server Utility

A virtual tape is a file or dataset containing a tape image.

- **The virtual tape is represented by a file in AWSTAPE format**
 - which can be a VSE/VSAM (ESDS) file
 - or a file on any Java-enabled platform (such as Linux or Windows system)
 - *TCP/IP is required to access the file on a remote server*



Virtual Tape support is available for 3480, 3490, and 3490E devices.

IBM @server

VSE Virtual Tape Server Utility- Sample JCL

```
* $$ JOB JNM=QQ1S1,DISP=L,PRI=9,  
* $$ NTFY=YES,  
* $$ CLASS=4  
* $$ LST DISP=H  
// JOB QQ1S1  BACKUP LIB TO TCPIP TAPE  
// SETPARM CUU=480  
// SETPARM TFILE='E:\LIB\BACKUP.TIMG'  
// SETPARM TLOC='119.164.89.252'  
VTAPE START,UNIT=&CUU,LOC=&TLOC,FILE='&TFILE',SCRATCH  
DVCUP &CUU  
MTC WTM,&CUU  
// ASSGN SYS005,&CUU,00  
// EXEC LIBR,PARM='MSHP'  
  BACKUP PRIMARY.KGRA.KGRA.PWS -  
    TAPE = SYS005      /* TAPEADDRESS    */  
/*  
DVCDN &CUU  
VTAPE STOP,UNIT=&CUU  
*  
* END OF STEP  
*  
/&  
* $$ EOJ
```

VSEPrint Utility

Formatted VSE print output



- Platform independent solution (Prereq. TCP/IP)
- Possibility to preview output
- Easy to use utility (GUI and command line)
- Print to arbitrary printing device
 - PDF, HTML

VSEPrint Utility - Meta File

/ This is a VSEPrint sample metafile. */*

// This line specifies command line parameters that will be passed to VSEPrint
"#settings# -asa -ib -po L "

// This line specifies the settings that will be used as default for the whole document
"default" monospaced 10

"1DIRECTORY DISPLAY SUBLIBRARY=PRD2.CONFIG" bold verdana u 11 blue iso

"-----" bold iso 12 red

"M E M B E R CREATION LAST BYTES LIBR CONT SVA A- R-" bold iso 10 i green

"NAME TYPE DATE UPDATE RECORDS BLKS STOR ELIG MODE" iso bold 10 i green

JConVSE - Automate your VSE jobs

JConVSE (Java console for VSE)

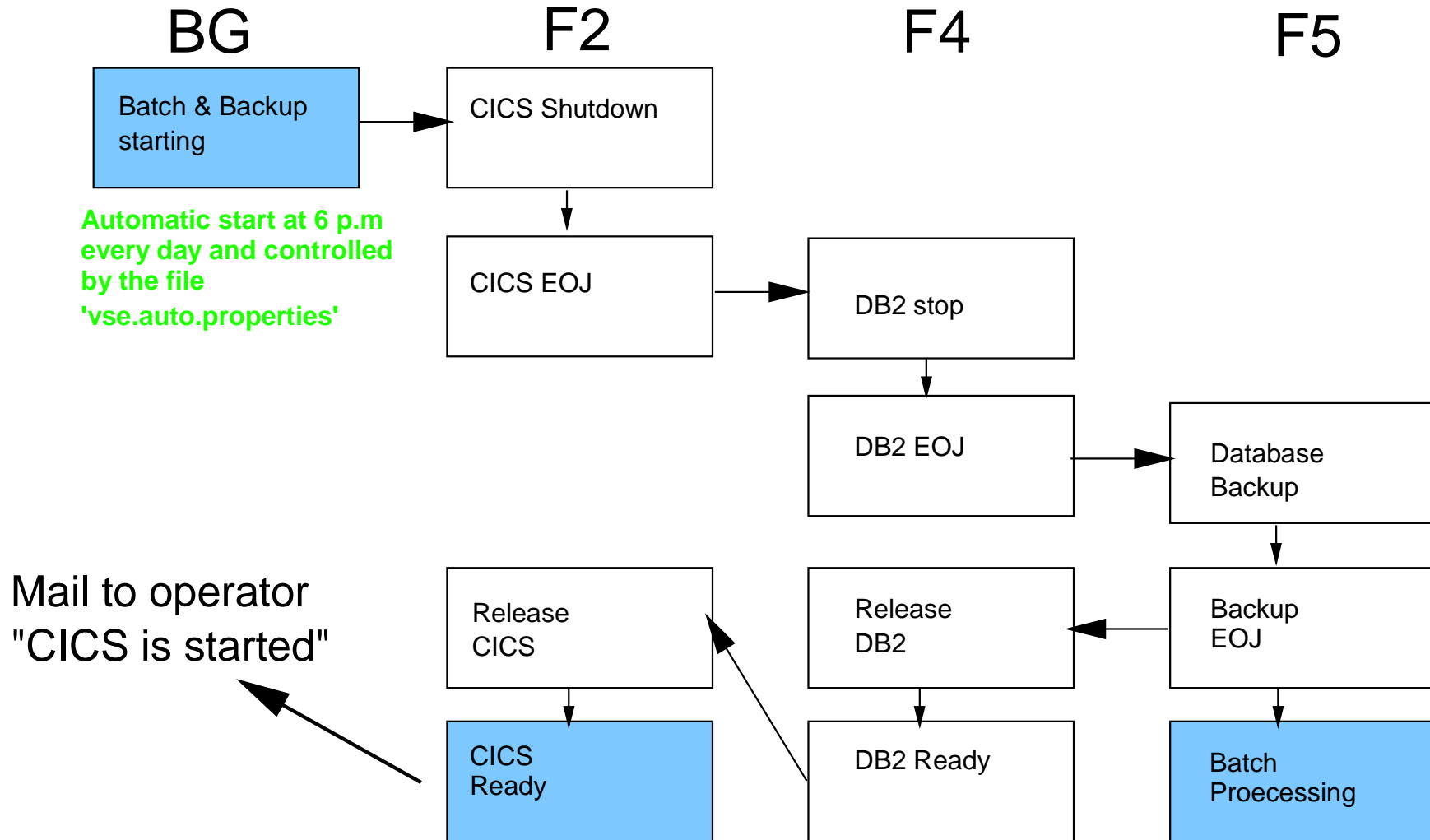
The application reacts on VSE messages and has a time control component.



This solution helps you to automate the VSE environment and to integrate VSE system in other platforms such as Linux for S/390.

JConVSE - Automate your VSE jobs

Under control from file 'vse.msg.properties'



JConVSE - Automate your VSE jobs

JConVSE - *vse.msg.properties*

Starting Backup

msg.4=0000 // PAUSE BATCH WILL NOW RELEASED

msg.4.delay=10 s

msg.4.action=Vmsg f2

msg.5=0109

msg.5.action=V109 cement p shut,i

msg.6=0002 EOJ

msg.6.delay=15 s

msg.6.action=Vmsg f4

msg.7=0004 ARI0062A SQLDS

msg.7.delay=5 s

msg.7.action=V4 sqlend quick

JConVSE - Properties Files

VSE.PROPERTIES

customize the VSE system

VSE.MSG.PROPERTIES

customize the messages

VSE.AUTO.PROPERTIES

customize the timed actions

VSE.MISC.PROPERTIES

customize the JConVSE panel

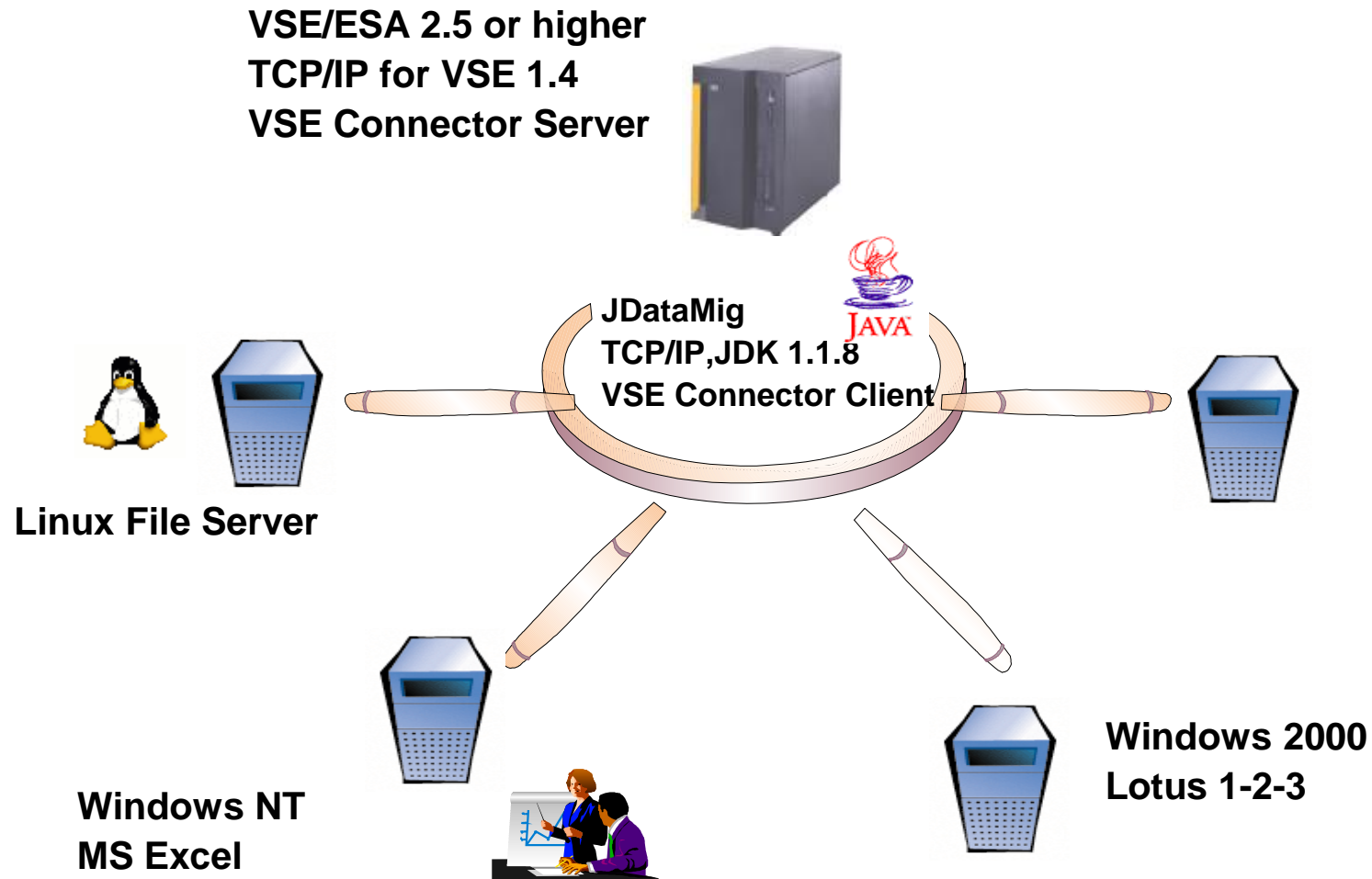
JDataMig - A VSE/VSAM data migration utility

JDataMig (Java data migration for VSE)

**The application integrated VSE VSAM data
in a heterogenous data environment**

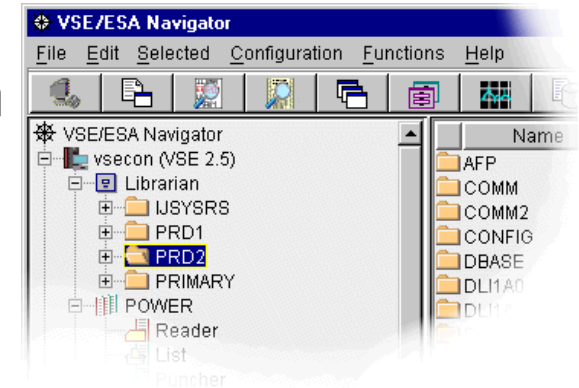
*This solution helps you to export VSAM data as
DB2 tables, SpreadSheet files or plain text files.*

JDataMig - A VSE/VSAM data migration utility



VSE Navigator - News

- Internet security has been improved with Secure Sockets Layer
- Support the Java 2 (J2EE) standard
- SHARE OPTION 4, no longer necessary
- More Plug-In:
 - ▶ Def. VSAM Cluster
 - ▶ VSAM Backup / Restore
 - ▶ Repro, Import, Export



TCP/IP for VSE/ESA Configuration Dialog

A Java-based dialog to customize the TCP/IP for VSE/ESA.



- **Create initialization and configuration members**
- **Import IPINIT members**
- **Easy to use utility**
- **Online Help**

VSE Lab Support

- Konzepte für Design und Architektur
(Integrationskonzepte, Projektpläne)
- Aufbau eines offenen VSE Environments
(e-business Konnektoren Implementierung)
- Schulung & Training für VSE Open Platform
(Java, e-business Konnektoren)
- Massgeschneiderte Prototyp Entwicklung, zusammen
mit dem Kunden



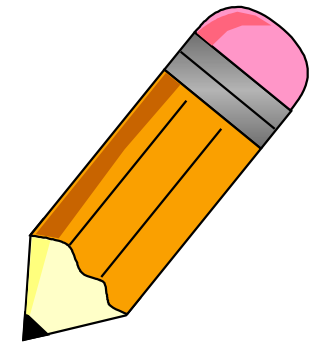
More Information on the Web

VSE/ESA e-business Connectors and Utilities

www.ibm.com/servers/eserver/zseries/os/vse/support/vseconn/conmain.htm

VSE Home Page

- Section 'Downloads' or
- Section 'ISV News / Downloads'



www.ibm.com/servers/eserver/zseries/os/vse/