

Mobility on System z

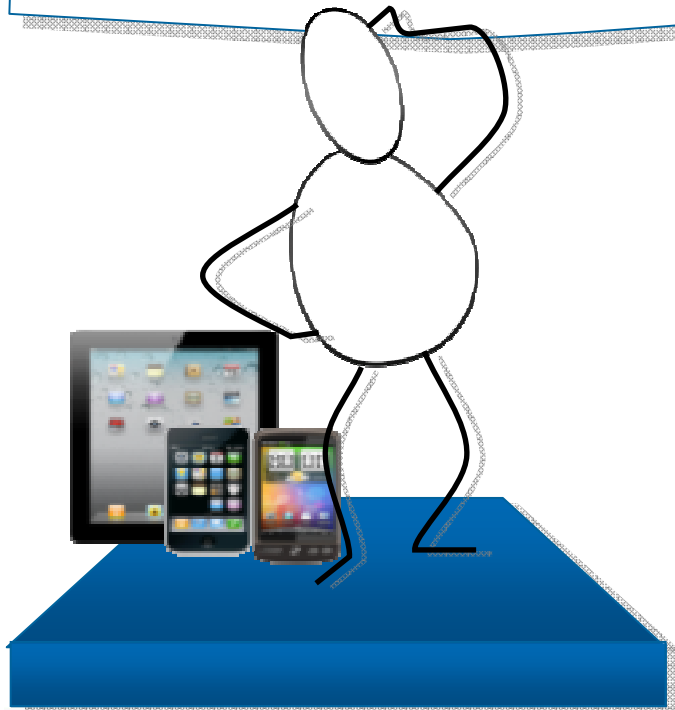
Wilhelm Mild
IT Architect
IBM



What about the mainframe?

The mainframe...

- Home to business critical applications and data
- How do we bridge the gap?



Mobile is changing the way information is used

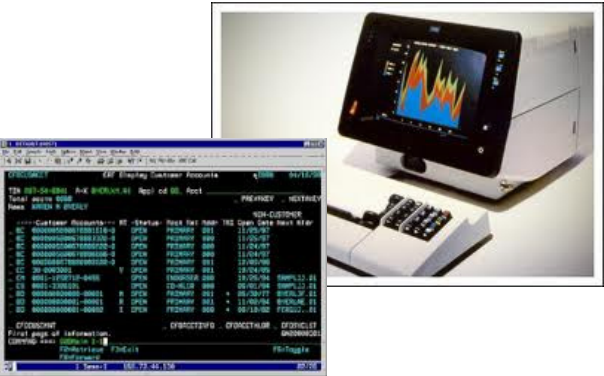


Mobile First

Information developed using multiple platforms and transformed into web services



Information restricted and developed in the data center



Mobile Applications are Not Miniature PC applications...

Mobile First

1
m



Mobile Applications

- User may be in the middle of some other activity (e.g. shopping in a supermarket)
- Interactions are short and may be interrupted
- Users are very impatient

Usage Context



PC Applications

- Using the application is the primary activity
- Interactions are longer and more focused
- Users are impatient

Mode of Interaction

- Non-keyboard: touch prevalent, also speech
- Typing should be minimized
- Screen size/real-estate is small

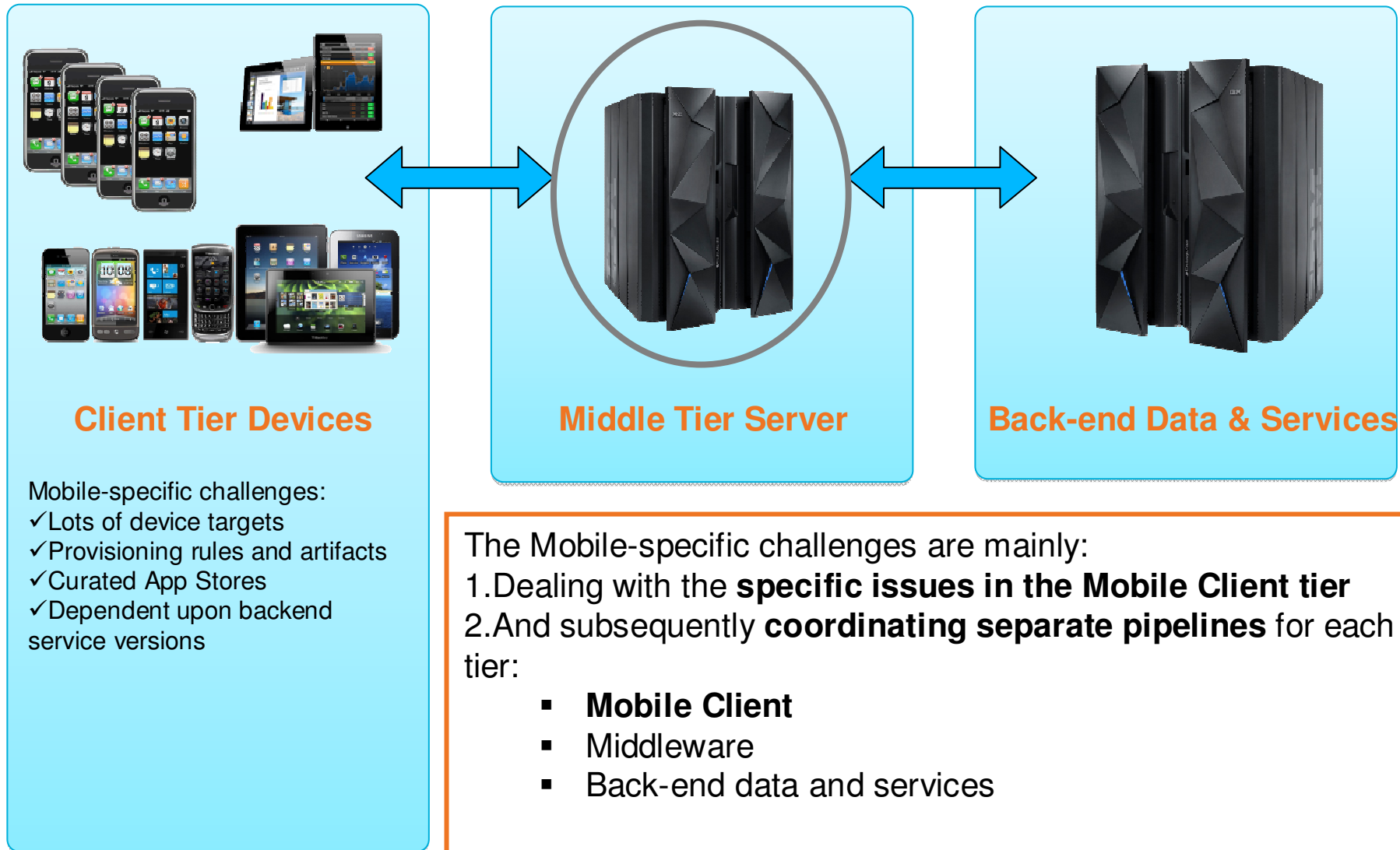
- Keyboard and mouse
- Typing is okay
- Larger screen size for presenting information

Other considerations

- Integration with device capabilities (e.g. camera, GPS, accelerometer)
- Offline behavior



MobileFirst: Multi-tier Mobile Apps – same System z

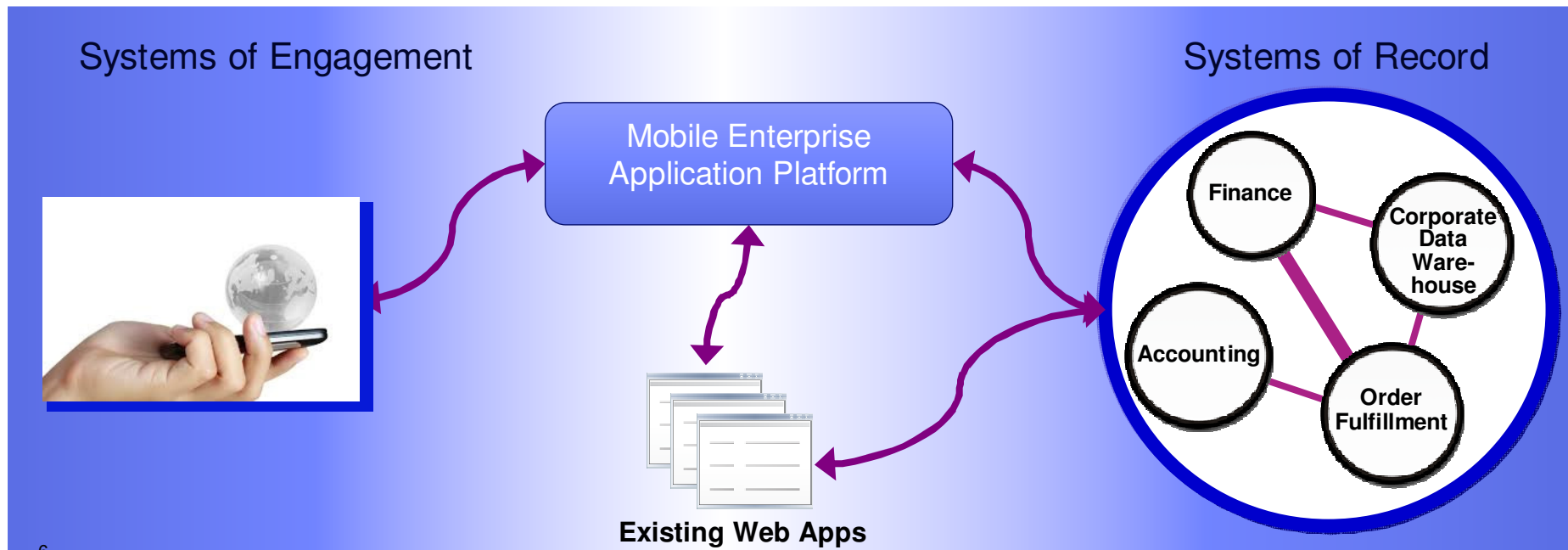


The role of System z in a mobile world

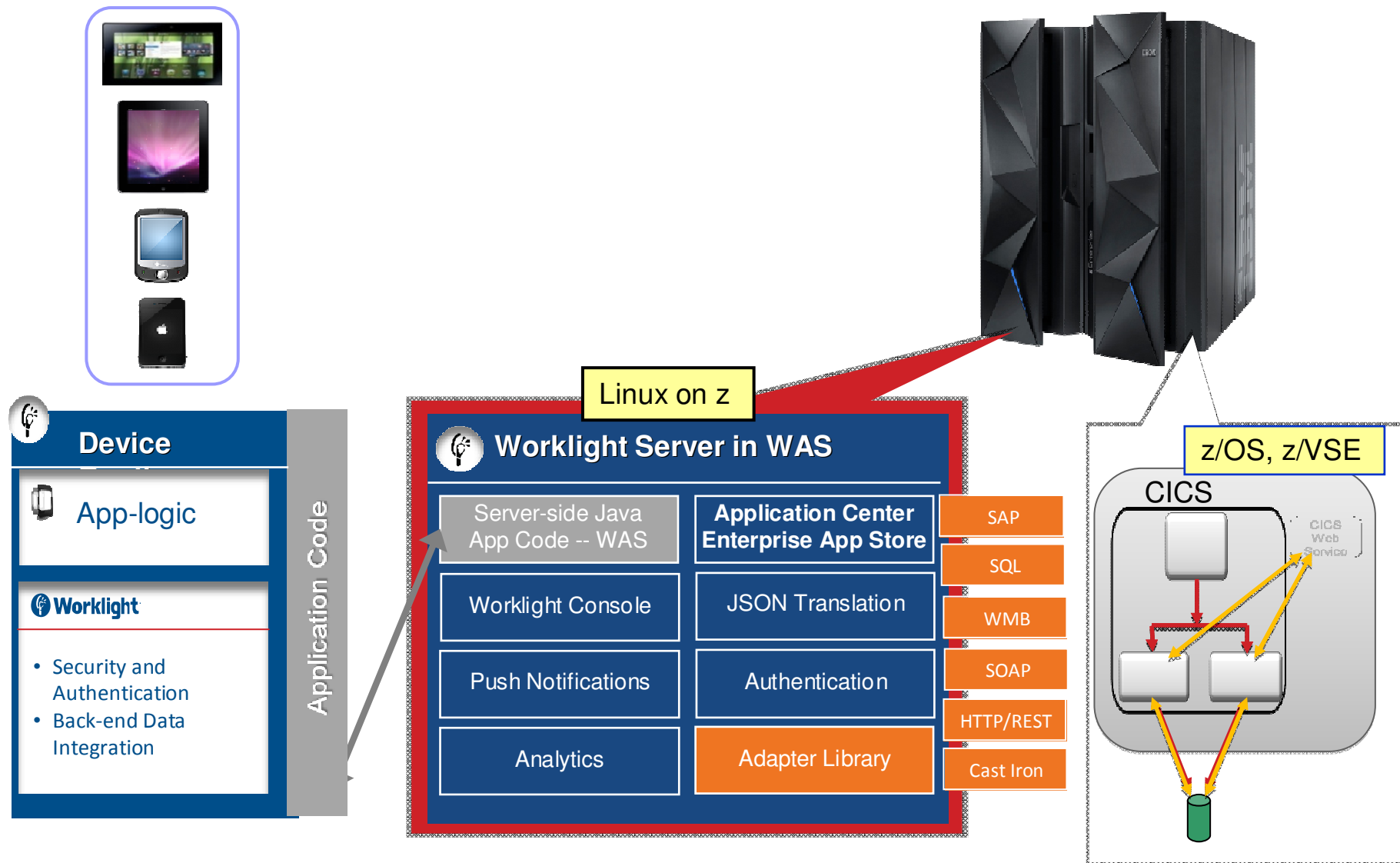
Solution to provide **secure**, **timely**, **high available** and **quick** access from mobile devices to critical data that resides on the back-end:

- Have an integrated approach to deliver applications
- Make every transaction secure
- Use mobile analytics to improve outcomes at every moment

With System z, we can bridge Systems of Engagement and Systems of Record

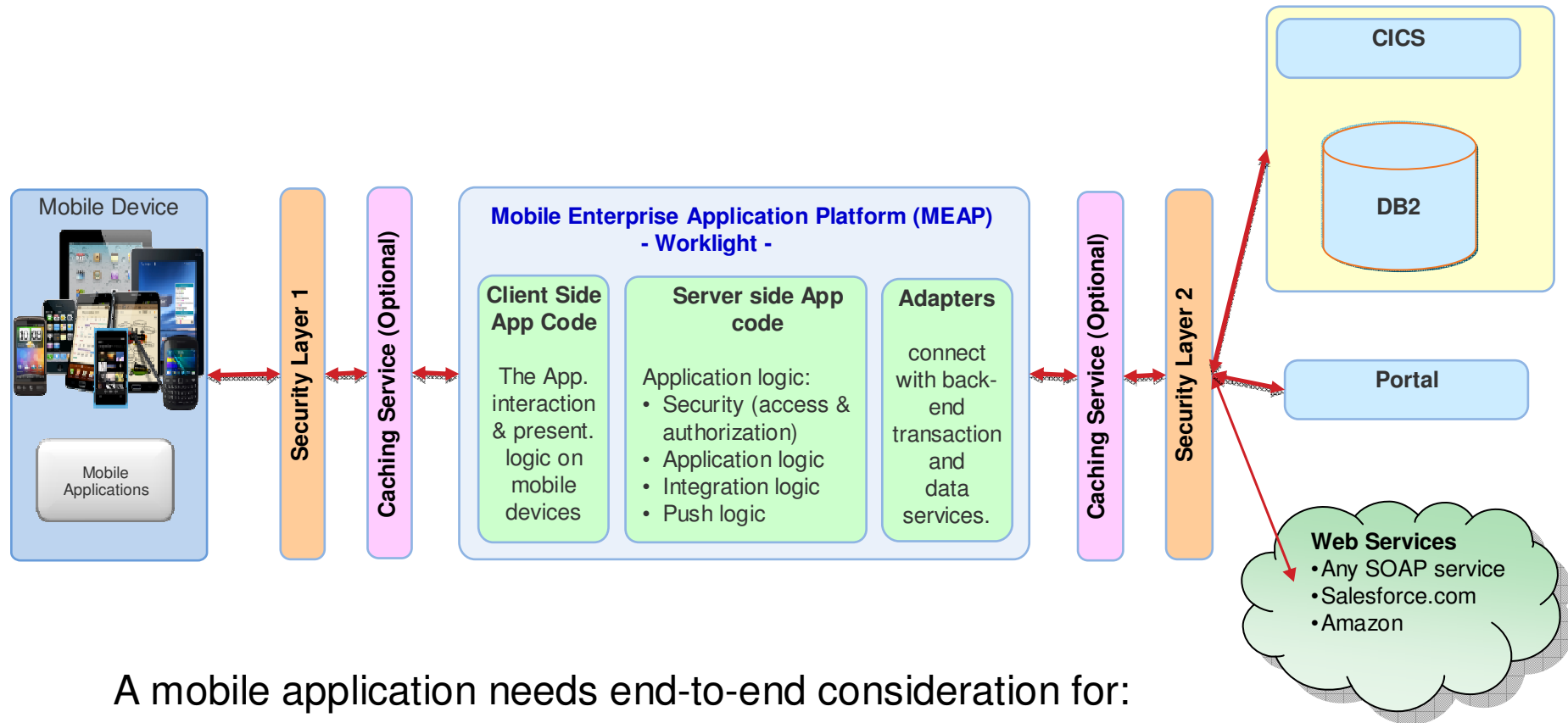


IBM Worklight Server



Worklight Video: http://www.youtube.com/watch?feature=player_embedded&v=zHnFw70XXXo

Mobile application overview diagram

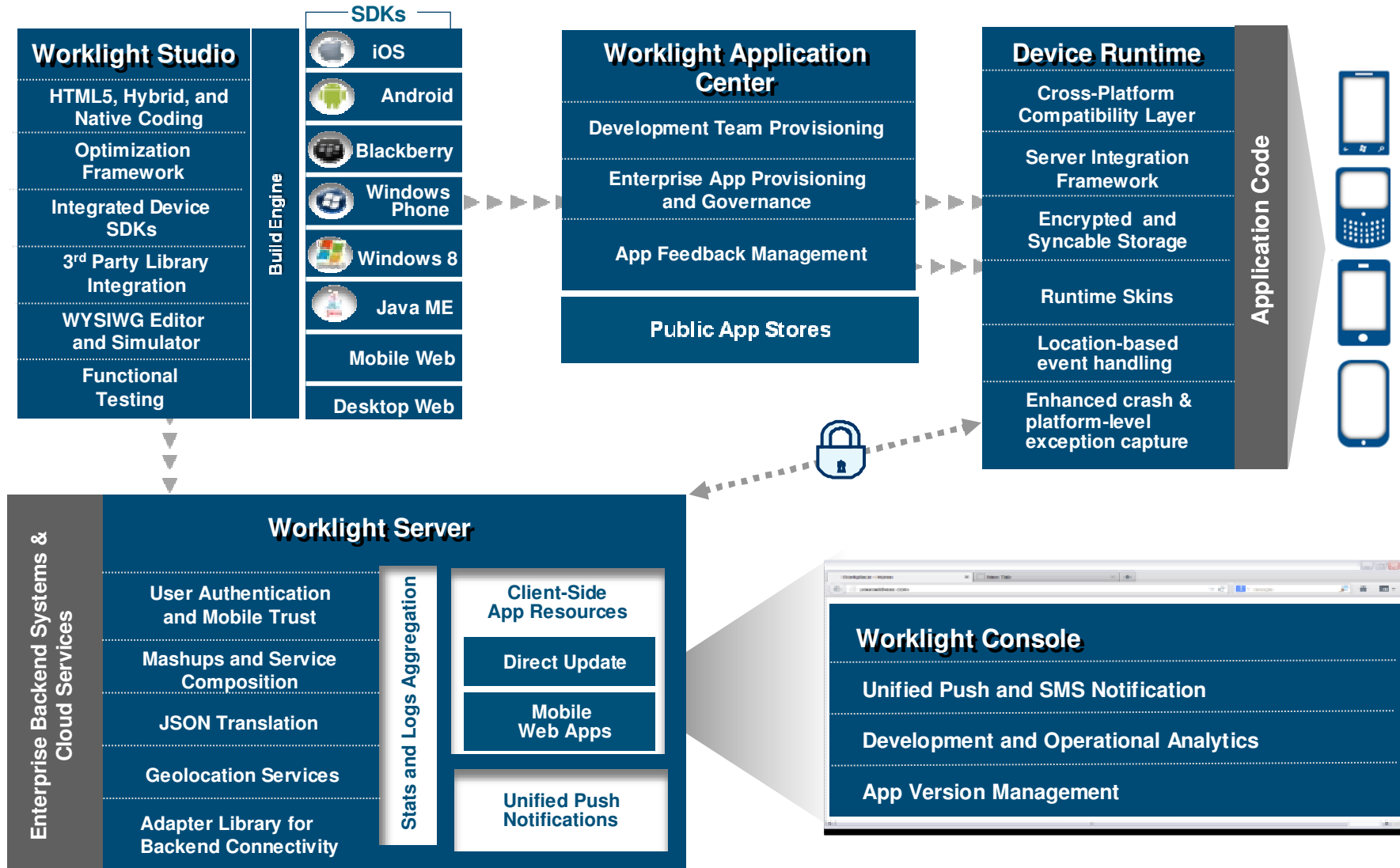


A mobile application needs end-to-end consideration for:

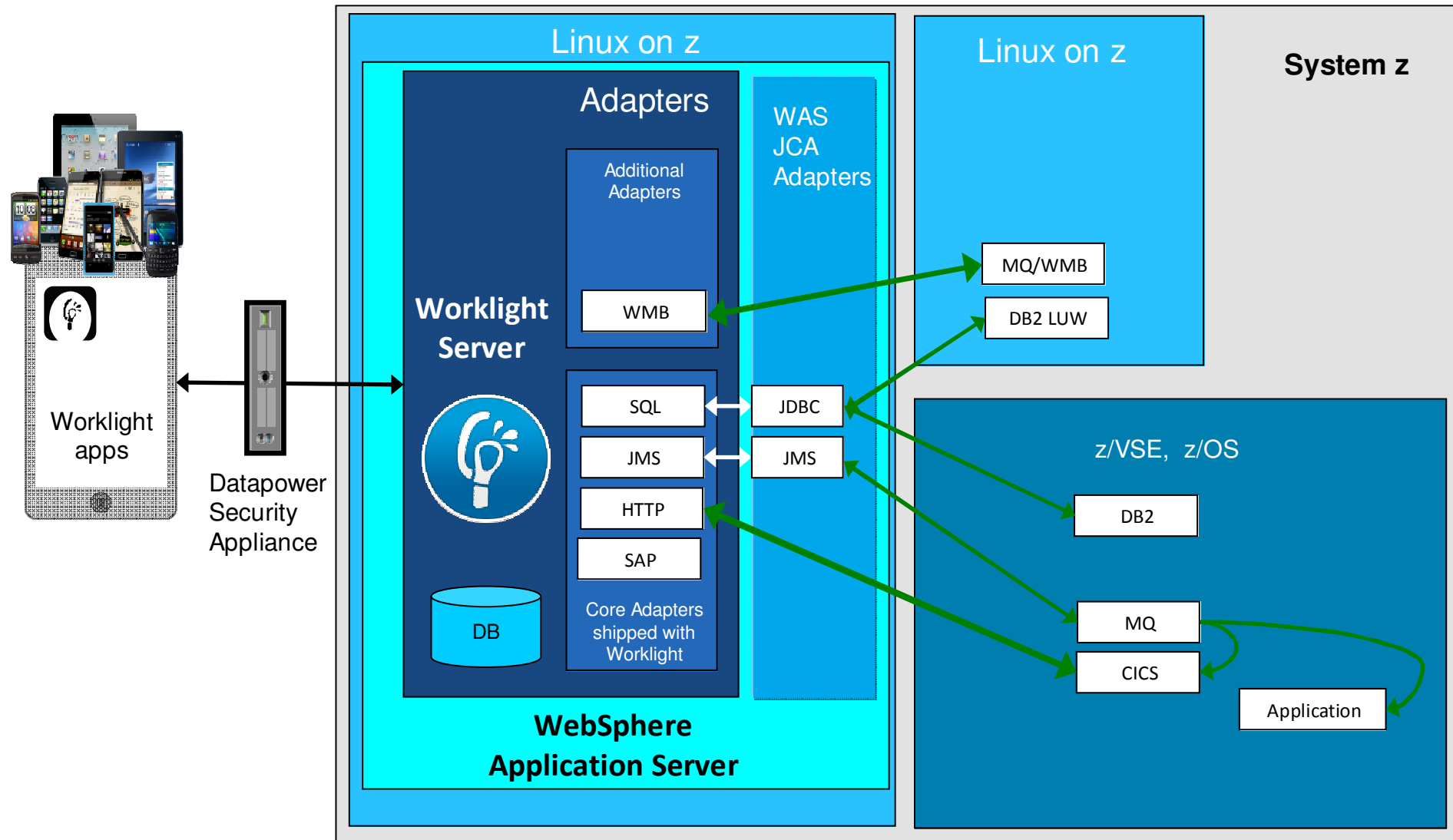
- Transactional integrity
- Data integrity
- Security

Mobile application integration is realized with Worklight Adapters

IBM Worklight Components Overview

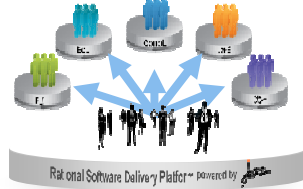


Implementation of a Mobile environment on System z - Functional diagram with WAS and Worklight Adapters



Worklight Studio with RDz a complete set of System z and Mobile Development capabilities

Integration with Team Concert for Lifecycle and Source Management

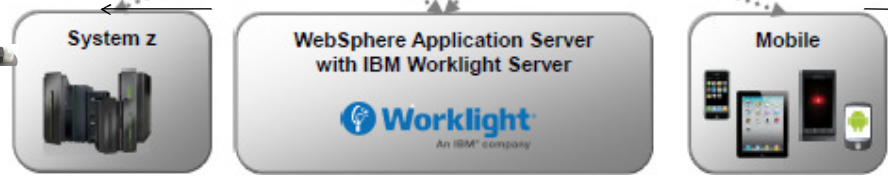


Access to typical System z sub-system functionality in z/OS, CICS, IMS, DB2, WAS



- Built on Eclipse
- Common tool set for end-to-end development
- Build, preview, and deploy within the IDE
- Mobile simulator (for unit test)
- End-to-end debug
- Integrate with third-party SDKs (e.g. Android Development Tools)

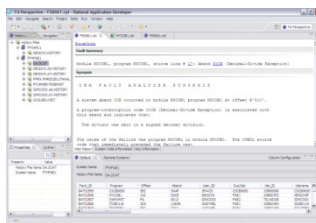
Integration with RD&T for flexible access to System z environment



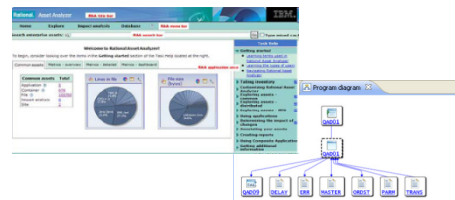
Robust Mobile Development in conjunction with Worklight



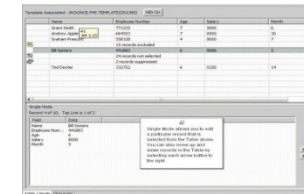
Integration with Fault Analyzer for Dump Analysis



Integration with Asset Analyzer for Application Understanding and Impact Analysis

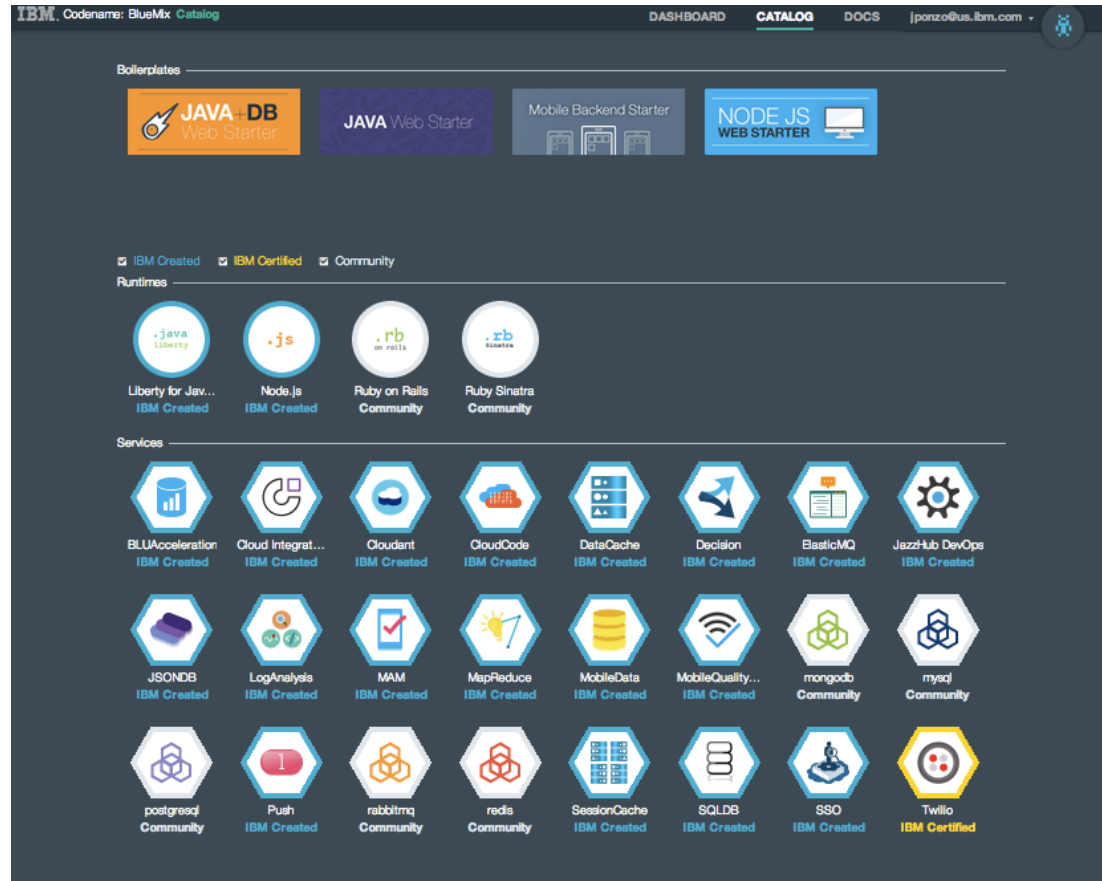


Integration with File Manager and Fault Analyzer for file and test data handling and Dump Analysis



In quick summary... BlueMix can...

Delivering a Composable Services development environment



Run Your Apps

The developer can choose any language runtime or bring their own. Just upload your code and go.

DevOps

Development, monitoring, deployment and logging tools allow the developer to run the entire application

APIs and Services

A catalog of open source, IBM and third party APIs services allow a developer to stitch together an application in minutes.

Cloud Integration

Build hybrid environments. Connect to on-premises systems of record plus other public and private clouds. Expose your own APIs to your developers.

Built on IBM SoftLayer

Runs on top of IBM's leading infrastructure as a service.

IBM MobileFirst

Mobile is transforming healthcare at
The Ottawa Hospital

See the case study

Mobile enterprise

Why IBM

Case studies

Solutions

Downloads

Developers

News & events

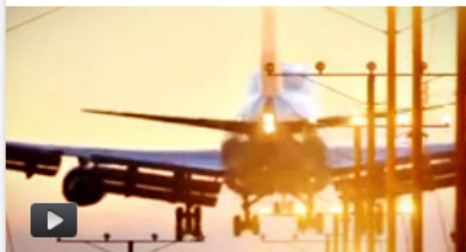
View case studies by:

All business needs

or

All industries

Travel and transportation



Air Canada

New mobile travel services cut
processing transactions 80 percent

Watch the video

Insurance

American National Insurance

Saving time in the field with rapid,
highly secure access to data from
mobile devices

Read the case study (562 KB)

Telecommunications

Avea

Cutting deployment problems almost
30 percent and reducing deployment
time for middleware services from four
hours to ten minutes

Read the case study (659 KB)

Technology

Cincom Systems

Projecting a 20 percent reduction in

Technology

CenterBeam

Delivering 98 percent policy

<http://www.ibm.com/mobilefirst/us/en/see-it-in-action/>



Quick Reference mobile app

for IBM System z

<http://www-03.ibm.com/systems/z/resources/mobileapp/>



New Quick Reference for IBM System z mobile app



Access critical System z information — from the convenience of your Smartphone

The free Quick Reference for IBM System z mobile app, now available for Android, BlackBerry and iPhone, provides quick and easy access to the latest System z product information, success stories, social networks, and z experts.

Key features

- Latest product highlights, descriptions, and specifications
- Client success stories
- Automatic content updates
- Core product content available without connectivity
- Access to relevant social networks, venues, and z experts
- One-touch communication with IBM
- Links to more System z information on the Web
- Sign-up options for additional exciting updates via e-mail or SMS

Download now

The free Quick Reference for IBM System z mobile app is available in the following ways:

- **Android users:**
[Download from Android Market](#) (link resides outside of ibm.com)
- **BlackBerry users:**
[Download](#) (link resides outside of ibm.com)
- **iPhone users:**
[Download](#) (link resides outside of ibm.com)

Contact IBM



- ✉ [Email IBM](#)
- ➔ [Find a Business Partner](#)
- ☎ **Call IBM: 1-866-883-8901**
Priority code: **101AS13W**

Browse System z

- | | |
|--------------------------|-----------------------------------|
| Hardware | Solutions |
| Software | Operating systems |
-
- | | |
|---------------------------------------|------------------------------------------|
| ➔ Advantages | ➔ News |
| ➔ Community | ➔ New to System z |
| ➔ Education | ➔ Resources |
| ➔ Literature | ➔ Success Stories |
| ➔ Migrate to System z | ➔ Support & services |

Manage your Systems from your Mobile device – HMC on System z, System p and Blades

http://ibmremote.com/IBM_Mobile_Systems_Remote/Welcome.html

IBM Mobile Systems Remote

The IBM Austin Research Lab has developed an iPhone and Android application that lets you monitor and manage multiple IBM® BladeCenters® along with their installed blades and components, System x® rack mounted systems, or zEnterprise® ensembles and CPCs.

Email: ibmremote@austin.ibm.com



Questions?



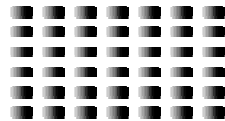
Wilhelm Mild
IBM Executive IT Architect



*IBM Deutschland Research
& Development GmbH
Schönaicher Strasse 220
71032 Böblingen, Germany*

*Office: +49 (0)7031-16-3796
mildw@de.ibm.com*

Wellcome to the Mobile era !



Notices

This information was developed for products and services offered in the U.S.A.

Note to U.S. Government Users Restricted Rights — Use, duplication or disclosure restricted by GSA ADP Schedule Contract with IBM Corp.

IBM may not offer the products, services, or features discussed in this document in other countries. Consult your local IBM representative for information on the products and services currently available in your area. Any reference to an IBM product, program, or service is not intended to state or imply that only that IBM product, program, or service may be used. Any functionally equivalent product, program, or service that does not infringe any IBM intellectual property right may be used instead. However, it is the user's responsibility to evaluate and verify the operation of any non-IBM product, program, or service.

IBM may have patents or pending patent applications covering subject matter described in this document. The furnishing of this document does not give you any license to these patents. You can send license inquiries, in writing, to: IBM Director of Licensing, IBM Corporation, North Castle Drive Armonk, NY 10504-1785 U.S.A.

The following paragraph does not apply to the United Kingdom or any other country where such provisions are inconsistent with local law: INTERNATIONAL BUSINESS MACHINES CORPORATION PROVIDES THIS PUBLICATION "AS IS" WITHOUT WARRANTY OF ANY KIND, EITHER EXPRESS OR IMPLIED, INCLUDING, BUT NOT LIMITED TO, THE IMPLIED WARRANTIES OF NON-INFRINGEMENT, MERCHANTABILITY OR FITNESS FOR A PARTICULAR PURPOSE. Some states do not allow disclaimer of express or implied warranties in certain transactions, therefore, this statement may not apply to you.

This information could include technical inaccuracies or typographical errors. Changes are periodically made to the information herein; these changes will be incorporated in new editions of the publication. IBM may make improvements and/or changes in the product(s) and/or the program(s) described in this publication at any time without notice.

Any references in this information to non-IBM Web sites are provided for convenience only and do not in any manner serve as an endorsement of those Web sites. The materials at those Web sites are not part of the materials for this IBM product and use of those Web sites is at your own risk.

IBM may use or distribute any of the information you supply in any way it believes appropriate without incurring any obligation to you.

Information concerning non-IBM products was obtained from the suppliers of those products, their published announcements or other publicly available sources. IBM has not tested those products and cannot confirm the accuracy of performance, compatibility or any other claims related to non-IBM products. Questions on the capabilities of non-IBM products should be addressed to the suppliers of those products.

This information contains examples of data and reports used in daily business operations. To illustrate them as completely as possible, the examples include the names of individuals, companies, brands, and products. All of these names are fictitious and any similarity to the names and addresses used by an actual business enterprise is entirely coincidental.

COPYRIGHT LICENSE:

This information contains sample application programs in source language, which illustrates programming techniques on various operating platforms. You may copy, modify, and distribute these sample programs in any form without payment to IBM, for the purposes of developing, using, marketing or distributing application programs conforming to the application programming interface for the operating platform for which the sample programs are written. These examples have not been thoroughly tested under all conditions. IBM, therefore, cannot guarantee or imply reliability, serviceability, or function of these programs. You may copy, modify, and distribute these sample programs in any form without payment to IBM for the purposes of developing, using, marketing, or distributing application programs conforming to IBM's application programming interfaces.

Trademarks

- This presentation contains trade-marked IBM products and technologies. Refer to the following Web site:

<http://www.ibm.com/legal/copytrade.shtml>