

Dr. Klaus Goebel

IBM Research & Development, Böblingen, [kgoebel@de.ibm.com](mailto:kgoebel@de.ibm.com)



# Aktuelles aus z/VM, z/VSE, Linux on System z



Frühjahrstagung 2014, Frankfurt, 7.-9. April 2014



## Trademarks

The following are trademarks of the International Business Machines Corporation in the United States and/or other countries.

CICS*	FlashCopy	Parallel Sysplex*	WebSphere*
DB2*	GDPS*	System Storage	z/OS*
DFSORT	HyperSwap	System z	z/VM*
DFSMS	IBM*	System z9	z/VSE
DS6000	IBM eServer	System z10	zSeries*
DS8000	IBM logo*	System z10 Business Class	z9
Enterprise Storage Server*	IMS	Tivoli	z10
ESCON*	MQSeries*	TotalStorage*	z10 BC
FICON*	OMEGAMON*	VSE/ESA	z10 EC

\* Registered trademarks of IBM Corporation

The following are trademarks or registered trademarks of other companies.

INFINIBAND, InfiniBand Trade Association and the INFINIBAND design marks are trademarks and/or service marks of the INFINIBAND Trade Association.

Intel is a trademark of Intel Corporation in the United States, other countries, or both.

Java and all Java-related trademarks and logos are trademarks of Sun Microsystems, Inc., in the United States and other countries

Linux is a registered trademark of Linus Torvalds in the United States, other countries, or both.

UNIX is a registered trademark of The Open Group in the United States and other countries.

Microsoft, Windows and Windows NT are registered trademarks of Microsoft Corporation.

Red Hat, the Red Hat "Shadow Man" logo, and all Red Hat-based trademarks and logos are trademarks or registered trademarks of Red Hat, Inc., in the United States and other countries.

\* All other products may be trademarks or registered trademarks of their respective companies.

### Notes:

Performance is in Internal Throughput Rate (ITR) ratio based on measurements and projections using standard IBM benchmarks in a controlled environment. The actual throughput that any user will experience will vary depending upon considerations such as the amount of multiprogramming in the user's job stream, the I/O configuration, the storage configuration, and the workload processed. Therefore, no assurance can be given that an individual user will achieve throughput improvements equivalent to the performance ratios stated here.

IBM hardware products are manufactured from new parts, or new and serviceable used parts. Regardless, our warranty terms apply.

All customer examples cited or described in this presentation are presented as illustrations of the manner in which some customers have used IBM products and the results they may have achieved. Actual environmental costs and performance characteristics will vary depending on individual customer configurations and conditions.

This publication was produced in the United States. IBM may not offer the products, services or features discussed in this document in other countries, and the information may be subject to change without notice. Consult your local IBM business contact for information on the product or services available in your area.

All statements regarding IBM's future direction and intent are subject to change or withdrawal without notice, and represent goals and objectives only.

Information about non-IBM products is obtained from the manufacturers of those products or their published announcements. IBM has not tested those products and cannot confirm the performance, compatibility, or any other claims related to non-IBM products. Questions on the capabilities of non-IBM products should be addressed to the suppliers of those products.

Prices subject to change without notice. Contact your IBM representative or Business Partner for the most current pricing in your geography.

## Notice Regarding Specialty Engines (e.g., zIIPs, zAAPs and IFLs):

Any information contained in this document regarding Specialty Engines ("SEs") and SE eligible workloads provides only general descriptions of the types and portions of workloads that are eligible for execution on Specialty Engines (e.g., zIIPs, zAAPs, and IFLs). IBM authorizes customers to use IBM SE only to execute the processing of Eligible Workloads of specific Programs expressly authorized by IBM as specified in the "Authorized Use Table for IBM Machines" provided at [www.ibm.com/systems/support/machine\\_warranties/machine\\_code/aut.html](http://www.ibm.com/systems/support/machine_warranties/machine_code/aut.html) ("AUT").

No other workload processing is authorized for execution on an SE.

IBM offers SEs at a lower price than General Processors/Central Processors because customers are authorized to use SEs only to process certain types and/or amounts of workloads as specified by IBM in the AUT.

## Agenda

➔ § **z/VSE**

§ **z/VM**

§ **Linux on System z**

§ **IBM Wave for z/VM**

§ **CAMS Offering**



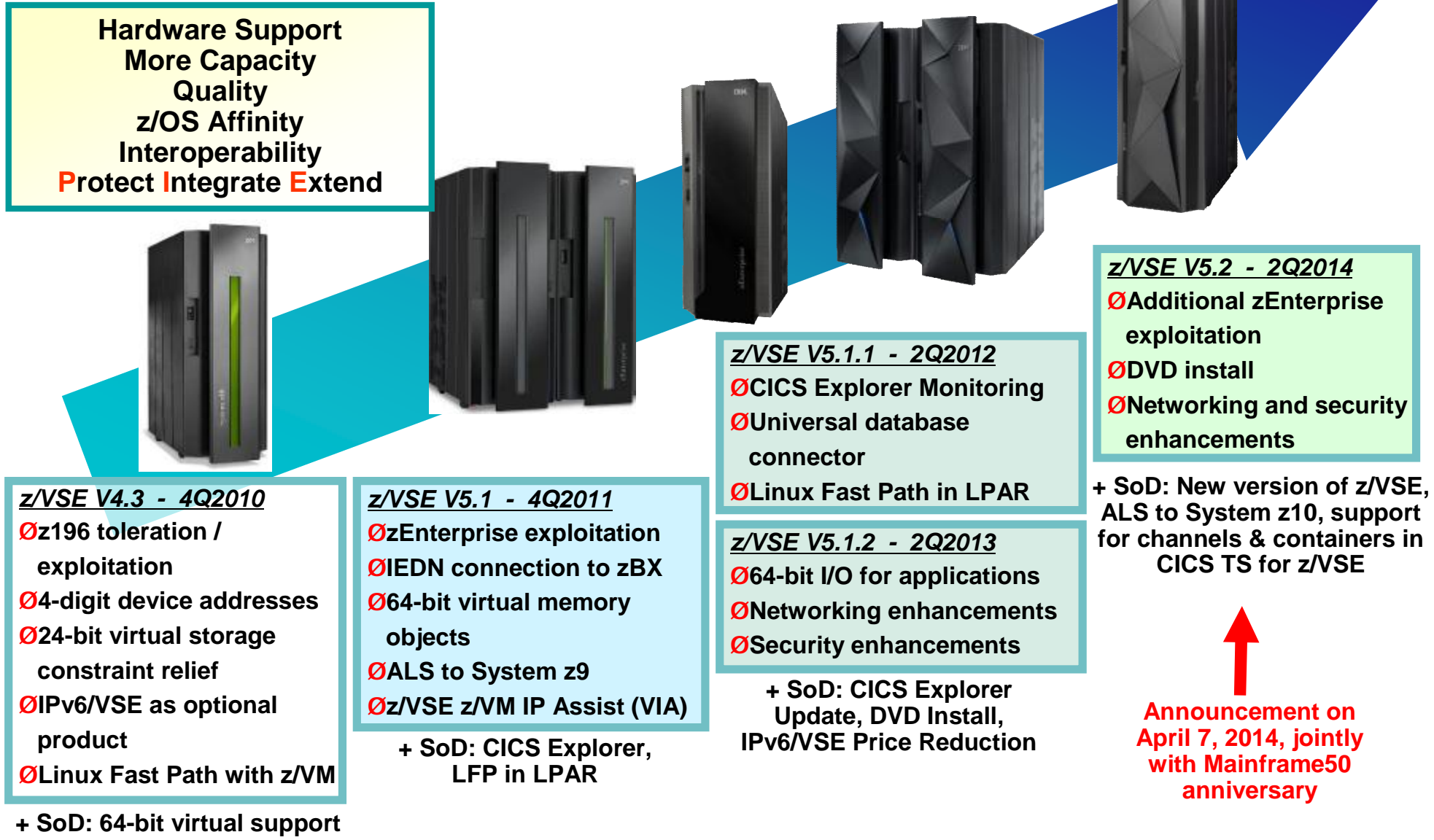
## z/VSE Support Status (as of April 2014)

VSE Version and Release	Marketed	Supported	End of Support
<b>z/VSE V5.1</b> requires z9 or newer system	a	a	tbd
<b>z/VSE V4.3</b> requires z800 or newer system	r	a	<b>10/31/2014</b>
<b>z/VSE V4.2</b> incl CICS/VSE V2.3, PL/I V1.11	r	r	10/31/2012
<b>z/VSE V4.1<sup>2)</sup></b>	r	r	04/30/2011
<b>z/VSE V3.1<sup>1)</sup></b>	r	r	07/31/2009
<b>VSE/ESA V2.7</b>	r	r	02/28/2007

1) z/VSE V3 is 31-bit mode only. It does not implement z/Architecture, and specifically does not implement 64-bit mode capabilities. z/VSE is designed to exploit select features of IBM System z10, System z9, and zSeries hardware.

2) z/VSE V4 is designed to exploit 64-bit real memory addressing, but will not support 64-bit virtual memory addressing

# z/VSE continues to demonstrate IBM's commitment



## z/VSE V5.2

*Announced April 7, 2014, General Availability planned for April 25, 2014*

### § Hardware Exploitation

- Integration of PTFs delivered with z/VSE V5.1.2+
  - zBC12 exploitation (incl. support for Crypto Express4S, OSA-Express5S)
  - TS1140 tape drive (incl. encryption capabilities)
- Virtual disk in 64-bit virtual memory objects

### § Ease of Use

- Install from DVD for ECKD devices
  - Tape-less system for initial install

### § Networking

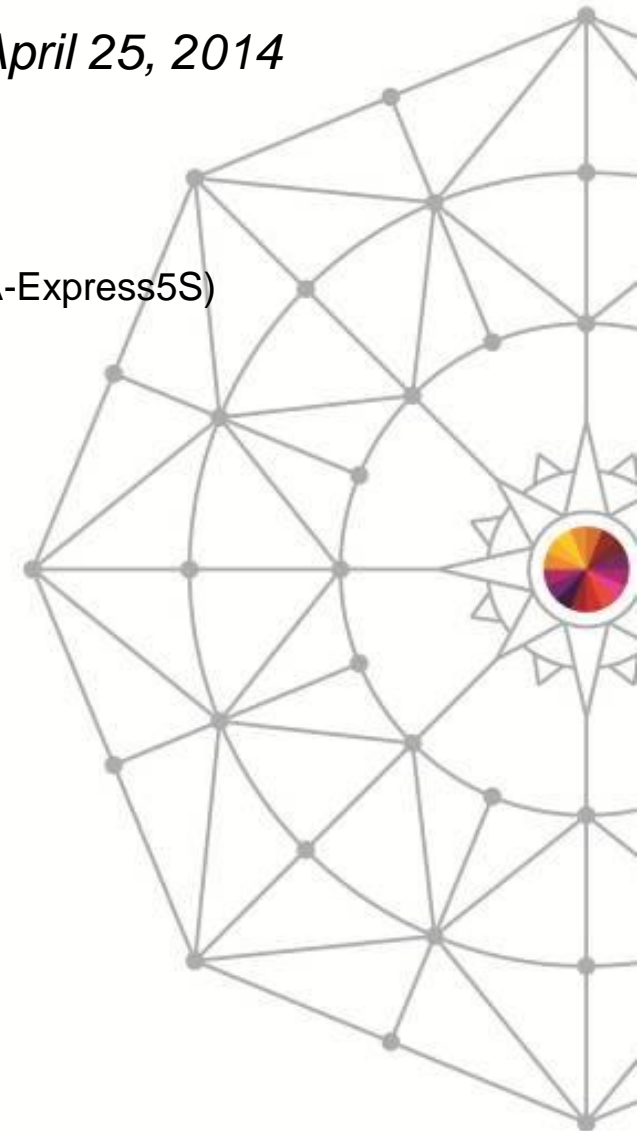
- IPv6 enhancements

### § Security

- Auditing enhancements
- OpenSSL integration

### § Customer Requirements

### § **New z/VSE Statements of Direction**



## New z/VSE Statements of Direction (SODs)

Announced April 7, 2014 – *jointly with Mainframe50 Anniversary*



- § **IBM intends to provide new capability in a future release of IBM CICS Transaction Server for z/VSE to provide:**
  - i. **Updates to CICS resources for CICS Explorer, and**
  - ii. **Channels and Containers to enable the transfer of large amounts of data between CICS applications.**
  
- § **Support for CICS Distributed Data Management (DDM) is stabilized in CICS TS for VSE/ESA V1.1.1. In a future release of CICS TS for z/VSE, IBM intends to discontinue support for CICS DDM.**
  
- § **z/VSE V5.2 will be the last release that supports IBM System z9. Future releases of z/VSE will support IBM System z10 and higher.**
  
- § **IBM intends to rename the product z/VSE Central Functions to z/VSE in a new z/VSE version.**

Note: IBM's statements regarding its plans, directions, and intent are subject to change or withdrawal without notice at IBM's sole discretion. Information regarding potential future products is intended to outline our general product direction and it should not be relied on in making a purchasing decision. The information mentioned regarding potential future products is not a commitment, promise, or legal obligation to deliver any material, code, or functionality. Information about potential future products may not be incorporated into any contract. The development, release, and timing of any future features or functionality described for our products remains at our sole discretion.



## New Redbook: Enhanced Networking on IBM z/VSE - SG24-8091

Available since February 6, 2014

<http://www.redbooks.ibm.com/Redbooks.nsf/RedpieceAbstracts/sg248091.html>

This IBM Redbooks publication helps you install, tailor, and configure new networking options for z/VSE that are available with TCP/IP for VSE/ESA, IPv6/VSE, and Fast Path to Linux on System z (Linux Fast Path). We put a strong focus on network security and describe how the new OpenSSL-based SSL runtime component can be used to enhance the security of your business.

- Chapter 1. Networking options overview
- Chapter 2. TCP/IP for VSE/ESA
- Chapter 3. IPv6/VSE
- Chapter 4. Fast Path to Linux on System z
- Chapter 5. OpenSSL
- Chapter 6. Comparison of stacks and protocols
- Appendix A. API reference

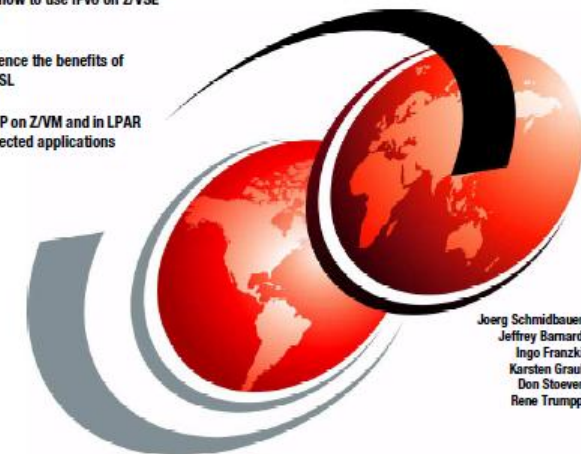


### Enhanced Networking on IBM z/VSE

Learn how to use IPv6 on z/VSE

Experience the benefits of  
OpenSSL

Use LFP on Z/VM and in LPAR  
for selected applications



Joerg Schmidbauer  
Jeffrey Barnard  
Ingo Franzki  
Karsten Graul  
Don Stoeber  
Rene Trumpp

[ibm.com/redbooks](http://ibm.com/redbooks)

**Redbooks**

## Agenda

§ z/VSE

➔ § z/VM

§ Linux on System z

§ IBM Wave for z/VM

§ CAMS Offering



## z/VM Release Status Summary (as of April 2014)



z/VM	Level	GA	End of Service	End of Marketing	Minimum Processor Level	Security Level
<b>Version 6</b>	Release 3	7/2013	4/2017		IBM System z10 <sup>®</sup>	EAL 4+[ <sup>2</sup> ] OSPP-LS
	Release 2	12/2011	12/2016 <sup>[3]</sup>	3Q/2013	IBM System z10 <sup>®</sup>	-
	Release 1	10/2009	4/2013	12/2011	IBM System z10 <sup>®</sup>	EAL 4+ OSPP-LS
<b>Version 5</b>	Release 4	9/2008	12/2014 <sup>[1]</sup>	3/2012	IBM eServer zSeries 800&900 (z800, z900)	-
	Release 3	6/2007	9/2010	9/2010	z800, z900	EAL 4+ CAPP/LSP

[<sup>1</sup>] Or later (Announced August 7, 2012)

[<sup>2</sup>] Targeted Security Level in V6.3 SOD

[<sup>3</sup>] Extended from original date (Announced February 4, 2014)

Marketed & Serviced

Serviced, but not Marketed

End of Service & Marketing

Extended support contracts are available.

## Stabilization of z/VM 5.4 Support – SOD announced July 23, 2013

The IBM zEnterprise EC12 and IBM zEnterprise BC12 are planned to be the last System z servers supported by z/VM V5.4 and the last System z servers that will support z/VM V5.4 running as a guest (second level). z/VM V5.4 will continue to be supported until December 31, 2014, or until the IBM System z9<sup>®</sup> Enterprise Class (z9 EC) and IBM System z9 Business Class (z9BC) are withdrawn from support, whichever is later. Refer to Withdrawal Announcement 912-144, (RFA56762) dated August 7, 2012.

- While support will continue to the later date of December 31, 2014, or until the z9 processors are withdrawn, support for new function and processors is being stabilized.
- z/VM 5.4 will **not** be supported on processors after the zEC12 and zBC12.
  - This includes running as a guest of a supported z/VM Version 6 release.
- Plan now to avoid a migration which would involve both hardware and software at the same time.

## CPU Pooling in z/VM 6.3 – announced Feb 24, 2014

- § Fine grain CPU limiting for a group of virtual machines
- § Define one or more pools in which a limit of CPU resources is set
- § Two flavors of limits:
  - LIMITHARD - Percentage of system
  - CAPACITY – Number of CPUs
- § Coexists with individual limit shares
  - More restrictive limit applies
- § Support details:
  - z/VM 6.3 with APAR VM65418 – June 27, 2014



DB2		DB2		DB2	DB2	WAS	WAS
WAS							
Linux 1 3 vIFL	Linux 2 3 vIFL	Linux 3 4 vIFL	Linux 4 6 vIFL	Linux 5 1 vIFL	Linux 6 2 vIFL		
Pool 1: 3 IFLs		Pool 2: 1 IFL	Pool 3: 8 IFLs		Pool 4: 4 IFLs		
LPAR zVM1: 4 dedicated IFLs			LPAR zVM2: 12 shared IFLs				
System z CEC – 16 IFLs							

## Environment Information Interface – announced Feb 24, 2014

### § New interface allows guest to capture execution environment

- Configuration and capacity information
- Various levels:
  - Machine, logical partition, hypervisor, virtual machine

### § New problem statement instruction: Store Hypervisor Information (STHYI)

### § Includes support for CPU Pooling enhancement

### § Foundation for future software licensing tools

### § Support details:

- z/VM 6.3 with APAR VM65419 – June 27, 2014



## zEC12/zBC12 Exploitation with z/VM 6.3 – announced Feb 24, 2014

### 10GbE RoCE Express Feature

- § Support for RDMA over Converged Ethernet for z/VM guests
- § Based on new hypervisor PCIe support
- § Designed to support z/OS's Shared Memory Communications-Remote Direct Memory Access (SMC-R) in z/OS V2.1
- § Helps reduce CPU resource consumption



### zEDC Express Feature

- § Guest support for zEDC Express Feature
- § High performance, low latency, low CPU consumption compression
- § Possible disk utilization reduction



### Support details:

- IBM zEC12 or zBC12 with appropriate millicode (driver 15)
- z/VM 6.3 with APAR VM65417 – June 27, 2014
- z/OS 1.12, z/OS 1.13, z/OS 2.1 with APAR OA43256 and/or OA44482, respectively
- Fulfills 2013 Statement of Direction

## Agenda

§ z/VSE

§ z/VM

➔ § Linux on System z

§ IBM Wave for z/VM

§ CAMS Offering





## Linux Distributions - Status as of April 2014

### § SLES 10 SP4

- Available since 04/2011

### § SLES 11 SP3

- Available since 07/2013

### § SLES 12

- Announced at SuseCon in 11/2013
- Expect ALS (Architecture Level Set) to IBM z196

### § RHEL 5.10

- Available since 10/2013

### § RHEL 6.5

- Available since 11/2013

### § RHEL 7

- Announced and available as Beta since 12/2013
- Expect ALS (Architecture Level Set) to IBM z196



# Oracle Database 12c R1

§ Available for Linux on System z since Jan 2014

[www.oracle.com/technetwork/database/enterprise-edition/downloads/index.html](http://www.oracle.com/technetwork/database/enterprise-edition/downloads/index.html)

ORACLE

Sign In/Register Help Country Communities I am a... I want to... Search

Products Solutions Downloads Store Support Training Partners

Oracle Technology Network > Database > Database 12c > Downloads

Database 12c

- Multitenant
- Application Development
- Data Warehousing & Big Data
- Database Cloud
- Engineered Systems
- High Availability
- Manageability
- Security
- Unstructured Data
- Windows
- Upgrades
- Migrations
- Options
- Database Technology Index

Overview Downloads Documentation Learn More Community

### Oracle Database Software Downloads

You must accept the OTN License Agreement to download this software.  
 Accept License Agreement |  Decline License Agreement

#### Oracle Database 12c Release 1 Standard Edition, Standard Edition One, and Enterprise Edition

(12.1.0.1.0)

Microsoft Windows x64 (64-bit)	File 1, File 2 (2.5 GB)	See All
Linux x86-64	File 1, File 2 (2.3 GB)	See All
Oracle Solaris (SPARC systems, 64-bit)	File 1, File 2 (2.6 GB)	See All
Oracle Solaris (x86 systems, 64-bit)	File 1, File 2 (2.3 GB)	See All
HP-UX Itanium	File 1, File 2 (3.1 GB)	See All
AIX (PPC64)	File 1, File 2 (2.7 GB)	See All
<b>zLinux64</b>	File 1, File 2 (2.3 GB)	See All

- See All page above contains **unzip instructions** plus Database Client (32 and 64-bit), Gateways, Grid Infrastructure, more

#### Oracle Database 11g Release 2 Standard Edition, Standard Edition One, and Enterprise Edition

7/13: Patch Set 11.2.0.4 for Linux and Solaris is now available on support.oracle.com. Note: it is a full installation (you do not need to download 11.2.0.1 first). See the README for more info (login to My Oracle Support required).

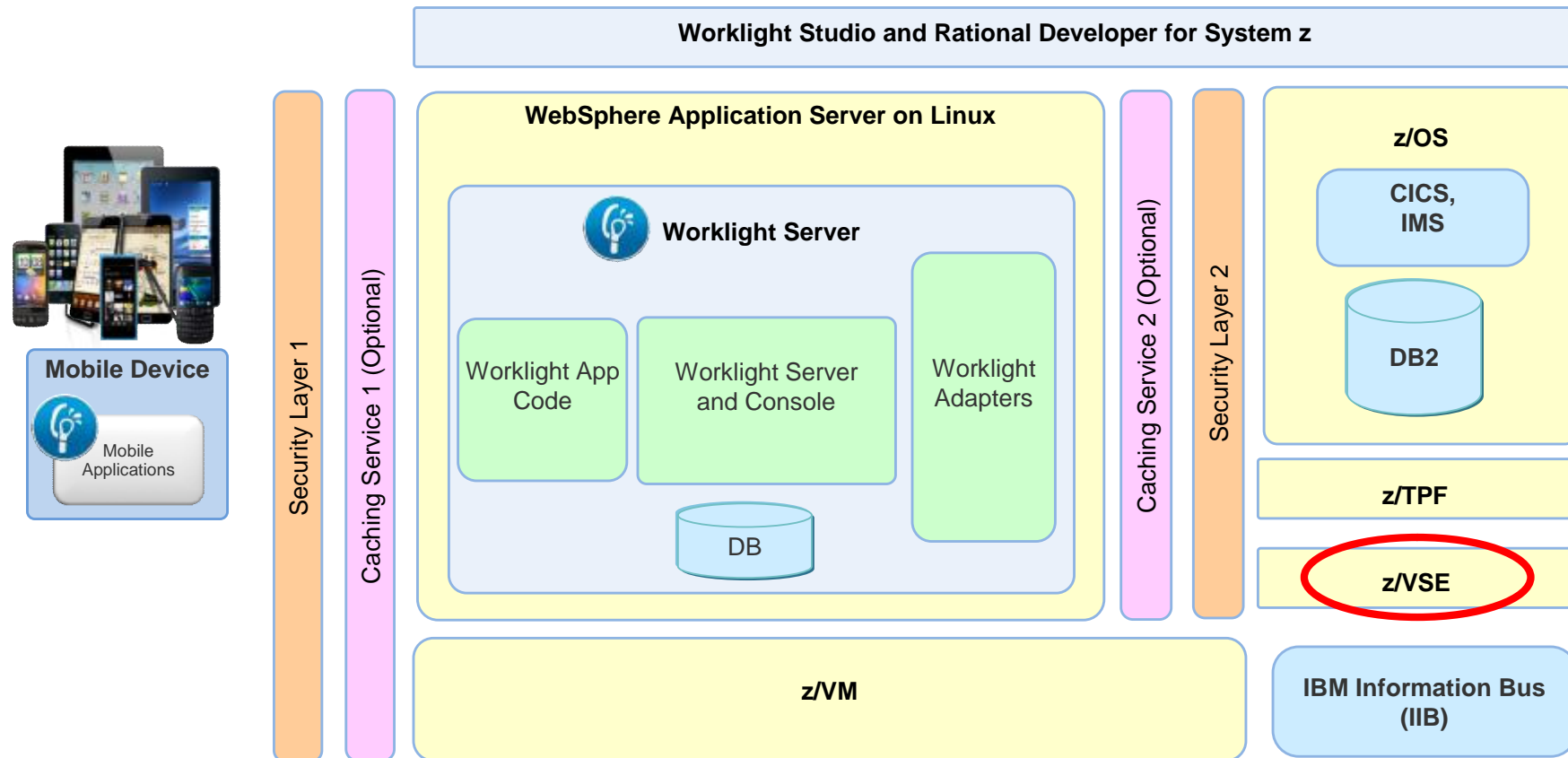
(11.2.0.2.0)

zLinux64	File 1, File 2 (2GB)	See All
----------	----------------------	---------

(11.2.0.1.0)

Microsoft Windows (32-bit)	File 1, File 2 (2GB)	See All
Microsoft Windows (x64)	File 1, File 2 (2GB)	See All
Linux x86	File 1, File 2 (2GB)	See All
Linux x86-64	File 1, File 2 (2GB)	See All
Solaris (SPARC) (64-bit)	File 1, File 2 (2GB)	See All
Solaris (x86-64)	File 1, File 2 (2GB)	See All
HP-UX Itanium	File 1, File 2 (2GB)	See All
HP-UX PA-RISC (64-bit)	File 1, File 2 (2GB)	See All
AIX (PPC64)	File 1, File 2 (2GB)	See All

# Mobile Architecture Overview for System z



## Agenda

§ **z/VSE**

§ **z/VM**

§ **Linux on System z**

 § **IBM Wave for z/VM**

§ **CAMS Offering**



## IBM Wave for z/VM V1.1

### IBM Web Administration VM Environment

- IBM Wave is a new virtualization management product for z/VM<sup>®</sup> and Linux<sup>®</sup> virtual servers that uses visualization to dramatically automate and simplify administrative and management tasks
- Enhanced Enterprise Linux Server (ELS<sup>\*</sup>) solution is also available with IBM Wave for z/VM
- New! Jumpstart Services to help customers get started with IBM Wave
- Read the announcement [here!](#)
- Announced: February 24<sup>th</sup>, 2014
- General availability: February 28<sup>th</sup>, 2014



5648-AE1 1.1. IBM Wave for z/VM  
5648-AE2 1.1. IBM Wave for z/VM S&S

Supported IBM System z<sup>®</sup> processors: IBM System z10<sup>®</sup> Enterprise Class (z10 EC<sup>™</sup>), IBM System z10 Business Class<sup>™</sup> (z10 BC<sup>™</sup>) and later

Supported z/VM versions/releases:

- § z/VM 6.3
- § z/VM 6.2
- § z/VM 5.4

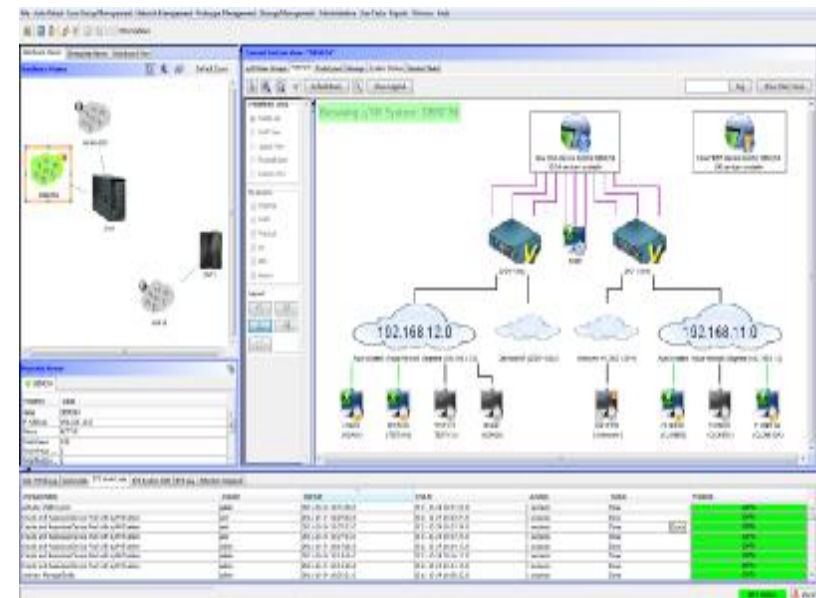


***\*Enterprise Linux Server is an integrated solution comprised of Hardware, Hypervisor, Memory, Easy to Use Virtualization Management and 3 years Service and Support designed to get customers including FIEs started with low cost scalable computing environment***

## IBM Wave for z/VM V1.1 – Overview

**IBM Wave simplifies and helps automate management and administration of z/VM and Linux virtual servers, jumpstarting the steps needed to get to cloud. With its content rich interface IBM Wave extends the reach of your staff and lets you manage z/VM and Linux intuitively and cost effectively, reducing reliance on deep expert skills.**

- § **Monitors** and **manages** virtual servers and resources from a single **graphical interface**
- § **Simplifies** and **automates** administration and management tasks
- § **Provisions** virtual resources (guests, network, storage)
- § Supports advanced z/VM capabilities such as Single System Image (**SSI**) and Live Guest Relocation (**LGR**)
- § Allows **delegation** of administrative capabilities to the appropriate teams



***A simple, intuitive graphical management, provisioning, and automation tool to help you fully leverage the power of System z virtualization on z/VM.***

## New Redbook

### Table of Contents:

1. Introduction to IBM Wave for z/VM
2. IBM Wave for z/VM architecture
3. Planning and design
4. Installation and configuration
5. How to manage and operate the user interface environment
6. How to manage z/VM
7. How to manage the Linux virtual machines

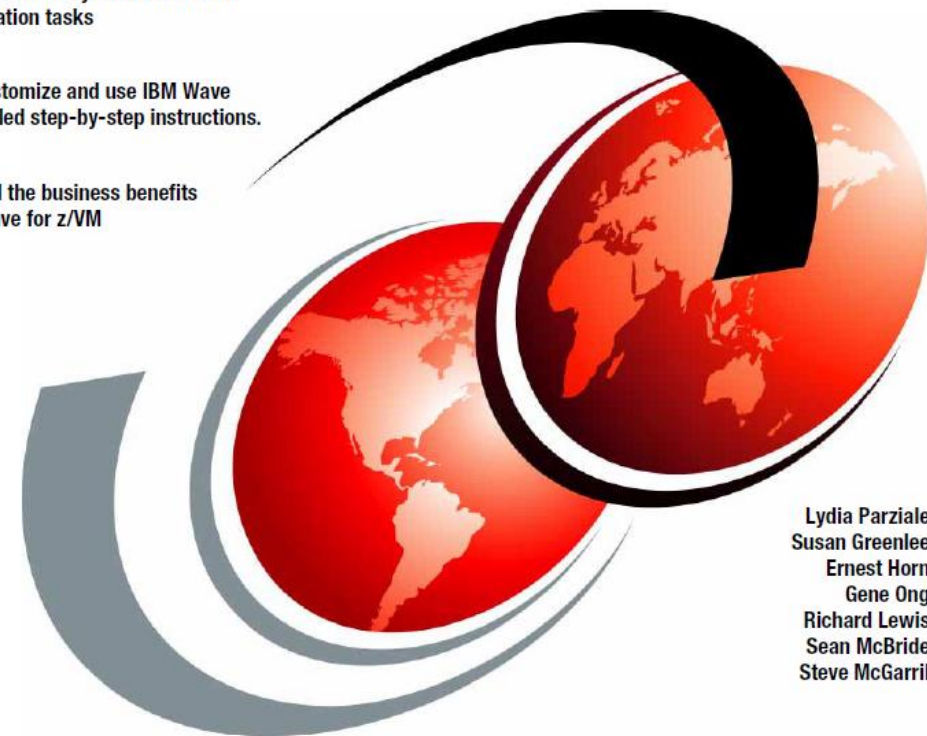
<http://www.redbooks.ibm.com/abstracts/sg248192.html>

# IBM Wave for z/VM - Installation, Implementation and Exploitation

Simplify Linux on System z and z/VM administration tasks

Install, customize and use IBM Wave with detailed step-by-step instructions.

Understand the business benefits of IBM Wave for z/VM



Lydia Parziale  
Susan Greenlee  
Ernest Horn  
Gene Ong  
Richard Lewis  
Sean McBride  
Steve McGarril

# Redbooks

## ELS and SEEL now feature IBM Wave for z/VM

*Enterprise Linux Server includes IBM zEnterprise hardware, hardware maintenance, IBM virtualization and management software components and software subscription & support*

### § Hardware options

- IBM zEnterprise server
- 32 GB memory
- Connectivity
- Maintenance

### § Virtualization software

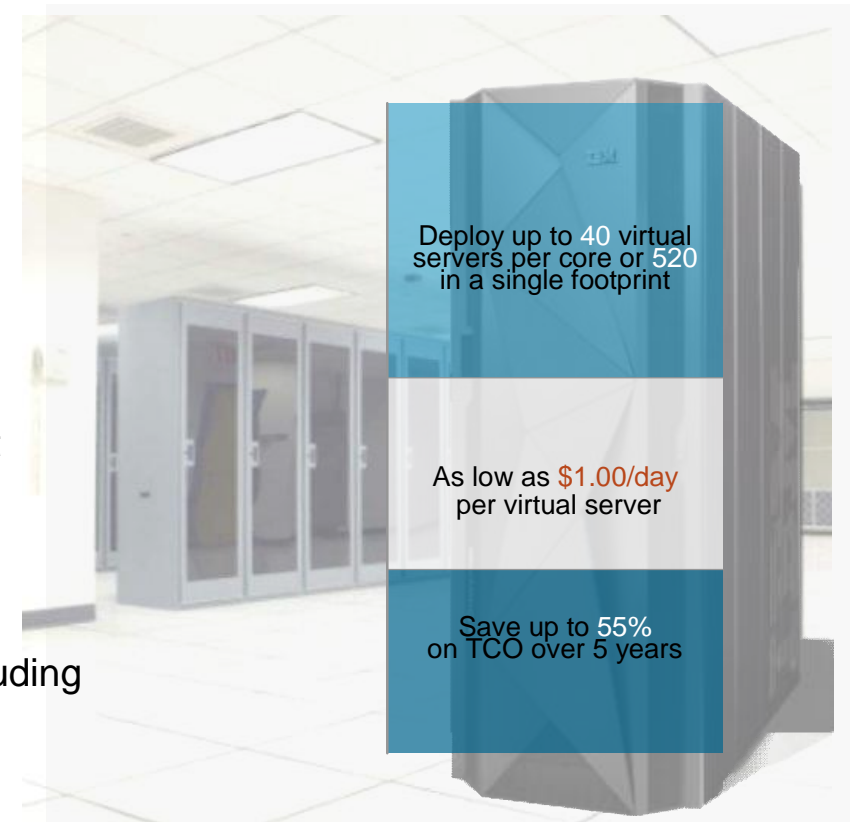
- IBM z/VM Version 6
- z/VM basic features:
  - Dirmaint, RACF®, Performance Toolkit for z/VM, RSCS
- **NEW! IBM Wave for z/VM** included, can be snapped out
- 3-5 years Subscription & Support
- **Note:** Linux ordered from Red Hat or SUSE

### § Enterprise Linux Server (ELS)

- Includes IFLs, memory, I/O adapters, z/VM software including 3-5 years of subscription & support, and maintenance

### § Solution Edition for Enterprise Linux (SEEL)

- Add incremental IFLs, memory, z/VM software and 3-5 years of subscription & support, and maintenance to existing zEnterprise server



<sup>1</sup> 28-32 GB memory on zBC12, 24 GB memory per core up to 5 IFLs on z114.



## Agenda

§ **z/VSE**

§ **z/VM**

§ **Linux on System z**

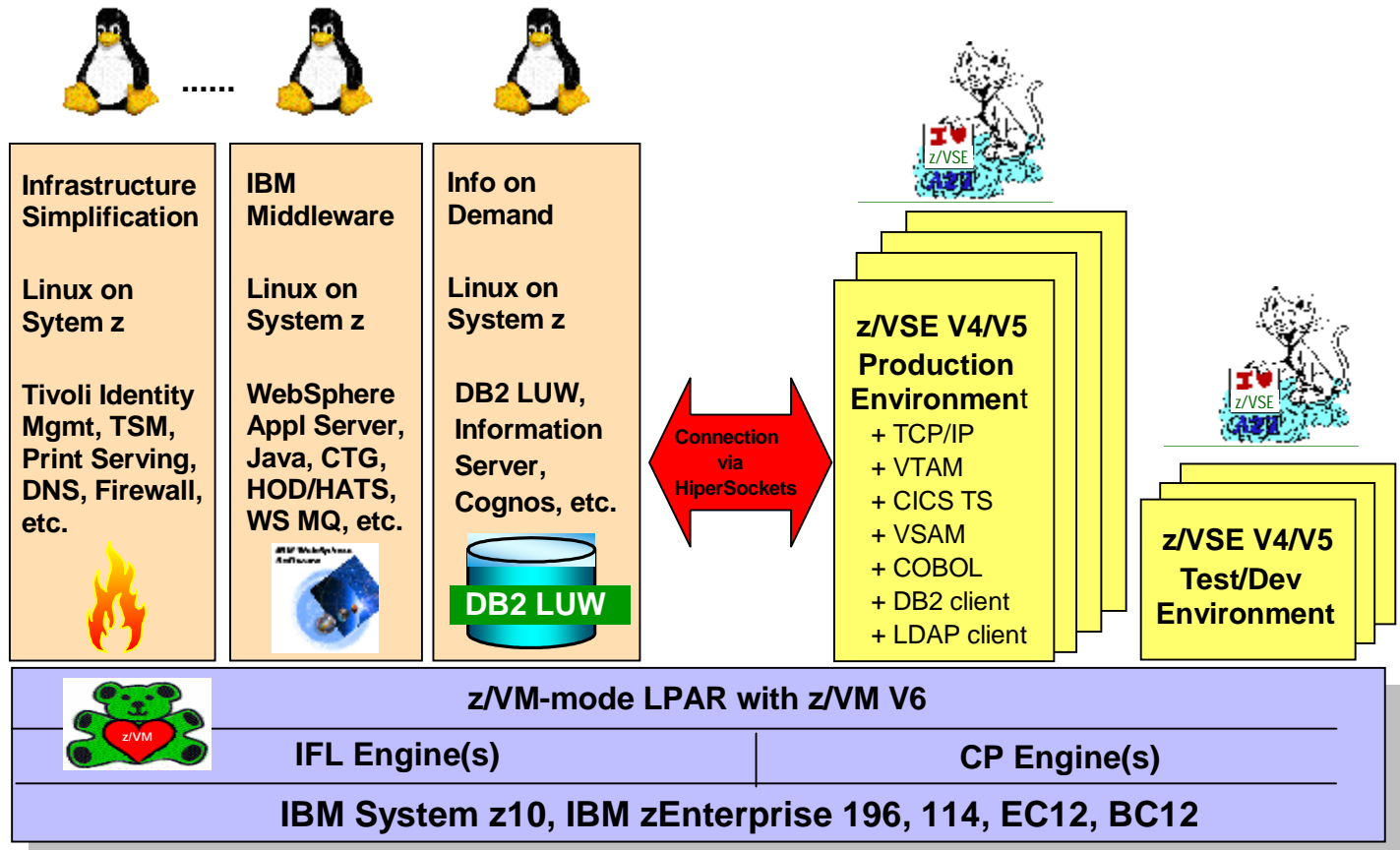
§ **IBM Wave for z/VM**

 § **CAMS Offering**



# z/VSE strategy with Linux on z Hybrid Environment leveraging z/VSE, z/VM, and Linux on System z

- P**rotect existing z/VSE investments
- I**ntegrate using middleware and z/VSE connectors
- E**xtend with Linux on IBM System z technology & solutions





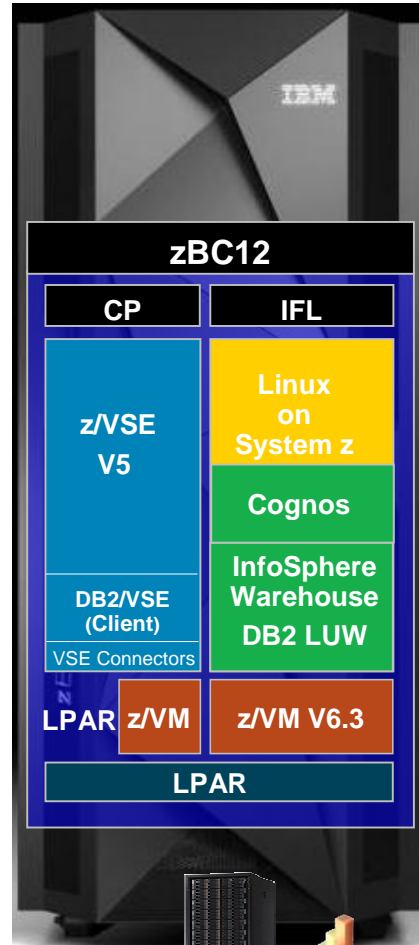
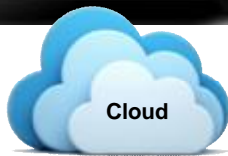
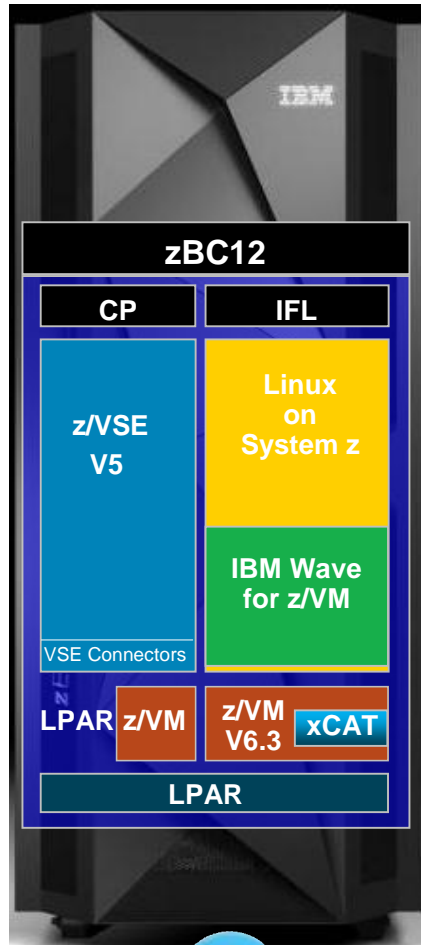
# z/VSE Linux Growth Offering – CAMS Solution Examples

**Cloud**

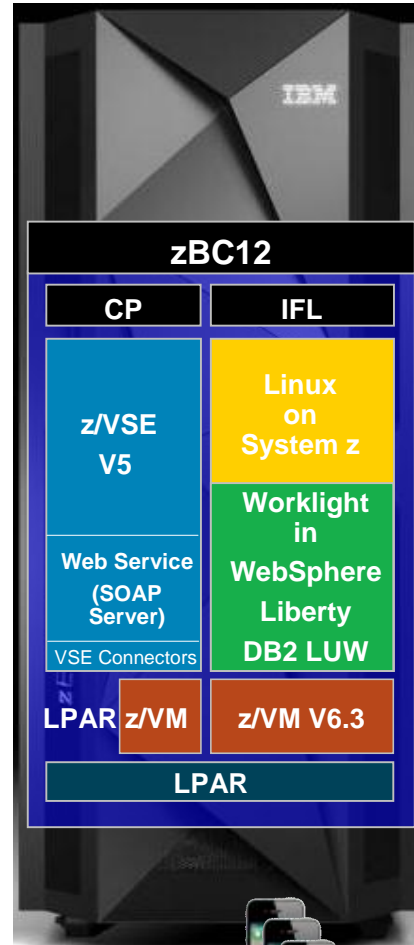
**Analytics**

**Mobile**

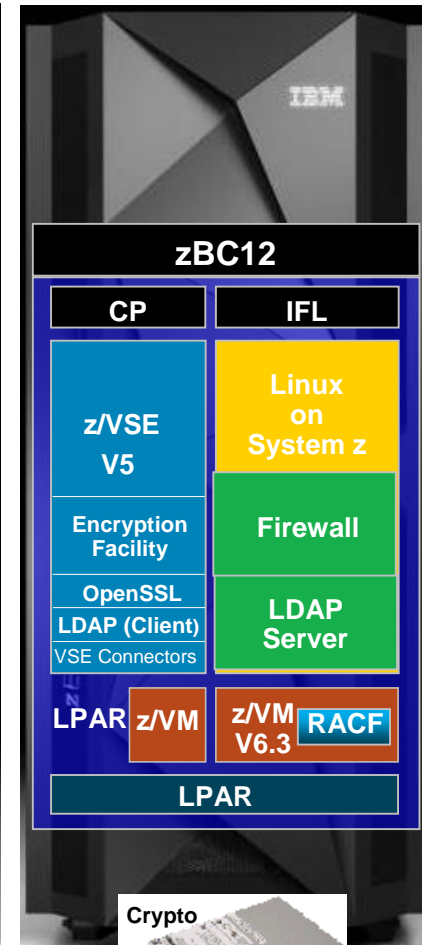
**Security**



XIV,  
DS8000



Mobile



Crypto



and  
many  
more  
....

## Questions?

