

Migration Assistance Tools

IBM Migration Checker for z/OS and EPSPT

D. Jeff Bland

z/OS Build and Installation

IBM Systems and Technology Group

Poughkeepsie, New York

bland@us.ibm.com

April 24, 2007 New York, NY

Trademarks

The following are trademarks of the International Business Machines Corporation in the United States and/or other countries.

AFP	DFP3000	FICOM	INVSOP	PROSA	VTAM
AXL	DFP3000m	HyperStrike	NetSpool	Print Services Facility	WebSphere
AnyNet	DFP300E	IBM	NetWare	Primary	zArchitecture
BaseManager	Endia	IBMLot	Open Class	RACF	zOS
CICS	ESCON	IMS	OS/390	Resource Link	zVM
DB2	Eserv	IntgrM	Parallel Sysplex	RMF	zSeries
DB2 Universal Database	FICOM	Language Environment		S/390	
DFP3000p		Mainframe		S/390 Parallel Enterprise Server	
DFP3000s		MVS		Simplex Timer	
		MVSESA		System z	
				System z	
				System z	
				ThinStorage	
				VoiceAge	
				VSE/ESA	

* Registered trademarks of IBM Corporation

The following are trademarks or registered trademarks of other companies.

Java and all Java-related trademarks and logos are trademarks of Sun Microsystems, Inc., in the United States and other countries. That Linux is a registered trademark of Linus Torvalds in the United States, other countries, or both. Microsoft, Windows and Windows NT are registered trademarks of Microsoft Corporation. UNIX is a registered trademark of The Open Group in the United States and other countries. SET and Secure Electronic Transaction are trademarks owned by SET Secure Electronic Transaction LLC.

* All other products may be trademarks or registered trademarks of their respective companies.

Notes:

Performance is based on typical configurations and configurations using standard IBM hardware. The actual throughput that any specific configuration will vary depending upon configurations such as the amount of suboptimalizing in the work's job stream, the I/O configuration, the storage configuration, and the workload period. Therefore, an occurrence can be planned that is based on individual occurrences through time periods explained in the performance within stated time.

IBM hardware products are manufactured from new parts, or new and recyclable used parts. Regardless, any warranty does not apply.

All customer samples used or described in this presentation are provided as illustrations of the manner in which some customers have used IBM products and the results they may have achieved. Actual customer results and performance characteristics will vary depending on individual customer configurations and conditions.

This publication may contain trademarks. IBM may not own the products, services or features discussed in this document or other countries, and the information may be subject to change without notice. Contact your local IBM hardware contact for information on the product or services available in your area.

All statements regarding IBM's future direction and intent are subject to change or withdrawal without notice, and represent goals and objectives only.

Information about non-IBM products is obtained from the manufacturers of those products or their published materials. IBM has not tested these products and cannot confirm the performance, compatibility, or any other claims included in non-IBM products. Describe the capabilities of non-IBM products should be addressed to the suppliers of those products.

Pricing subject to change without notice. Contact your IBM representative or Business Partner for the most current pricing in your geography.

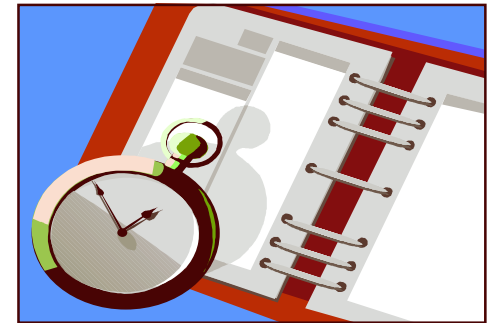
ENABLING BUSINESS.
A THROUGH Z.

Agenda

■ IBM Migration Checker for z/OS

▶ Programmatic help for Migration actions

- Problem / Solution
- The Programs
- Downloading the tool
- Setup
- Running the tool / Reviewing output



■ EPSPT

▶ Programmatic help for Coexistence fixes

- Downloading the tool
- Downloading the extract file
- Running the tool / Reviewing output

■ Summary

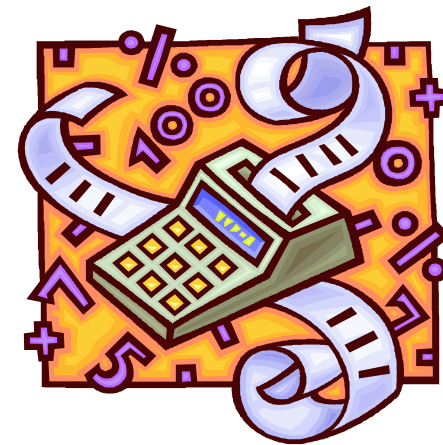
Some z/OS Migration Trivia

■ From z/OS R4 to R8:

- ▶ Approximate Migration actions: 235
 - Required migration actions: 28
 - Required migration actions if you meet a certain condition: 164
 - Recommended migration actions (Best Practices): 44

■ New migration actions introduced in:

- ▶ z/OS R5: 50
- ▶ z/OS R6: 45
- ▶ z/OS R7: 50
- ▶ z/OS R8: 90



IBM Migration Checker for z/OS



Common Migration Problems :

- There are many migration actions required for each release.
 - There are 90 new Migration actions for z/OS V1R8 alone that must be evaluated.
- The applicability of migration actions can be difficult to determine.
- Determination of the applicability is (in many cases) manual, when it could be programmatic.
- If a migration action has been completed, it can be difficult to verify.

It's easy to see that there would be great value in something that can make these tasks easier.

Wouldn't it be nice if there was :

- A way to programatically determine applicability of a migration action on my system.
- A program that can tell me what is required or recommended to be changed.
- A program that can validate my changes after I've completed them.

IBM Migration Checker for z/OS

Solution: *The IBM Migration Checker for z/OS*



- Consists of 14 Migration Checker programs for Migration to z/OS VIR8.
- Migration from z/OS VIR7 to VIR8+ was initially addressed, but the programs, when appropriate, can run on systems as low as VIR4.
- The “checking programs” will indicate applicability of certain migration actions.
- The programs will detect the need for or completeness of the migration action, not perform the action.
- The programs can be run prior to ordering the release, after the release is installed, and any time afterwards (during deployment).
- The IBM Migration Checker for z/OS is available “as is”, and can be downloaded as a web deliverable.

IBM Migration Checker for z/OS

The IBM Migration Checker for z/OS can:

- Alert you to some migration actions that you should plan for in the future.
- Detect some migration actions that you can do now to ease your migration to z/OS V1R8.
- Detect some migration actions that are required for migration to z/OS V1R8.
- Verify that you've done some migration actions correctly when you're running z/OS V1R8.
- Save you time.

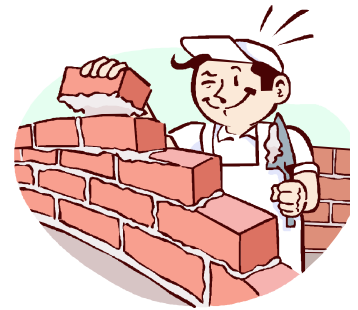
The IBM Migration Checker for z/OS can check pre-install and post-install "Migration Health" of a system.

- Knowing the applicability and correctness of migration actions..... Priceless.



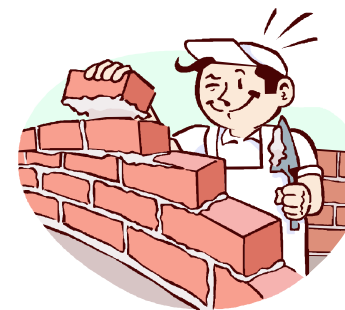
Programs included in the IBM Migration Checker for z/OS

1. **TN3270AS** - Run the TN3270E Telnet server as a separate address space from TCPIP
2. **HFSZFS** - Migrate from HFS file systems to the higher performance zFS file systems
3. **ZFSMULT** - Discontinue use of multi-file system aggregates
4. **BTSIZE** - **BLOCKTOKENSIZE** default changes from **REQUIRE** to **NOREQUIRE (IGDSMSxx)**
5. **OLDVSAM** - Redefine **VSAM** data sets that contain the **IMBED**, **REPLICATE**, or **KEYRANGE** attributes (future requirement). Currently only checks usercatalogs
6. **MASTRCON** - Accommodate the removal of the master console concept
7. **ONEBCON** - Accommodate the removal of 1-byte console IDs
8. **LLSTCAT** - Catalog **SYS1.SIEALNKE** and **SYS1.SIEAMIGE** for the default system link list in z/OS VIR8



Programs included in the IBM Migration Checker for z/OS

- 9. **NEWDS** - Add references to new data sets and paths
- 10. **OLDDDS** - Remove references to old data sets and paths
- 11. **SMSLVL** - Ensure the integrity of SMS control data sets
- 12. **ETCUSS** - Updated Communications Server and z/OS UNIX /etc configuration files
- 13. **BINDDNS** - IP Services: Migrate from BIND DNS 4.9.3 (future requirement)
- 14. **LEGPROF** - IP Services: Update profiles if still using TN3270 server legacy statements





Programmatic Help With Migration Actions

- ▶ **The IBM Migration Checker for z/OS is available from**
<http://www-03.ibm.com/servers/eserver/zseries/zos/downloads/>
- ▶ **Steps to follow:**
- ▶ **You will need to register and login before downloading.**
- ▶ **Follow the directions in the Installation and Use document which include:**
 1. **Download the 4 files (3 binary and a usage PDF).**
 2. **Allocate 3 datasets and upload the 3 binary files to your z/OS host system.**
 - **hlq.CLIST, hlq.JCL and hlq.LOAD**
 3. **Customize the hlq.CLIST(\$JOB CARD) member for your environment.**
 4. **Initialize the IBM Migration Checker for z/OS.**
 - **Run hlq.CLIST(\$SETUP)**
 5. **Provide system-specific information in hlq.CLIST(\$sysname) member.**
 6. **Verify that your user ID has TSO/E CONSOLE command authority and that your userid has an OMVS segment defined, etc.**

Programmatic Help With Migration Actions



7. Run all available Migrations checks by submitting the job \$MIGALL or run an individual Migration program you're interested in.
8. Review each member of hlq.\$sysname.OUTPUT for what was found by the Migration Checker. Rerun as necessary.

► Usage Notes:

- Evaluates the **currently active** system.
- Programs will be to detect migration actions, not to correct. Therefore you can re-run these programs as many times you want, at any point in your migration cycle.
- This tool is not supported by the IBM Service organization but rather by the tool owner on a best-can-do basis. Please report any problems, suggestions, or comments to our forum "IBM Migration Checker for z/OS Feedback", on IBM Customer Connect. To find this form, select Product Introduction on the left and then Forums.
- For access to the forums, send a note to zosmig@us.ibm.com.

IBM Migration Checker Demo

- Download
- \$jobcard edit
- Run \$setup
- Show JCL and OUTPUT datasets
- Edit \$sysname, add info
- Show job
- Submit \$migall
- Show Outputs and \$MIGALL output

```

BROWSE      MVSSSTORE.SL.CLIST($JOB CARD) - 01.19      Line 00000000 Col 001 080
Command ==>
***** Top of Data ***** Scroll ==> CSR
/*-----*/
/* Update the jobcards below to suit your system. Ensure that you */
/* use appropriate accounting information and programmers name, */
/* if necessary. */
/*
/* Select how you would like the jobs to be named. If you specify:
/*   JOBNAME=PROGNAME (the default) : the jobname will be the name
/*   of the migration program. A different jobname will be
/*   used for each job.
/*   JOBNAME=USERIDX : the jobname will be the name of the user
/*   that runs the $SETUP command, with one character appended
/*   to it. A different jobname will be used for each job.
/*   JOBNAME=USERIDX=myname : the jobname will be the name that you
/*   specify as "myname", with one character appended to it.
/*   A different jobname will be used for each job.
/*   JOBNAME=ALLSAME : all jobnames will be the name of the user
/*   with one character appended to it. The same jobname will
/*   be used for all jobs.
/*-----*/
JOBNAME=PROGNAME
JOB CARD1 = //JOBNAME      JOB 'put your acct info here', 'your prog name',
JOB CARD2 = //           CLASS=A,
JOB CARD3 = //           MSGCLASS=H,MSGLEVEL=(1,1)
JOB CARD4 = //*JOBPARM SYSAFF=*
JOB CARD5 = // *FOR JES3:  //*MAIN SYSTEM=SYSTEM_NAME
/*-----*/

```



Menu List Mode Functions Utilities Help

ISPF Command Shell

ISPF Command ==>>

Enter TSO or Workstation commands below:

```
====> ex 'mvsstore.sl.clist($setup)'
```

Place cursor on choice and press enter to Retrieve command

```
=> ex 'BLAND2.CLIST(UPDTBBHT)'  
=> ex 'BLAND2.CLIST(UPDTBBGT)'  
=> ex 'BLAND2.CLIST(UPDTBBFT)'  
=> ex 'BLAND2.CLIST(UPDTBBET)'  
=> ex 'BLAND2.CLIST(UPDTBBOT)'  
=> ex 'BLAND2.CLIST(UPDTBBCT)'  
=> ex 'BLAND2.CLIST(UPDTBBBT)'  
=> ex 'BLAND2.CLIST(UPDTBBAT)'  
=> ex 'BLAND2.CLIST(UPDTBBRT)'  
=> ex 'BLAND2.CLIST(UPDTBBZT)'
```



BROWSE MVSSTORE.SL.CLIST(\$SY1) - 01.00 Line 00000000 Col 001 000

Command ==>

Scroll ==> CSR

```
***** Top of Data *****  
/*-----*/  
/* PRESERVED USER SPECIFIED SYSTEM INFORMATION */  
/*-----*/
```

CSINAME = MVSBUILD.ZOS17.CSI

TGTZONE = TGTZ17

DLBZONE = DLBZ17

TCP/IP1 = TCP/IP

TCP/IP2 =

TCP/IP3 =

TCP/IP4 =

TCP/IP5 =

TCP/IP6 =

TCP/IP7 =

TCP/IP8 =

TELNET1 =

TELNET2 =

TELNET3 =

TELNET4 =

TELNET5 =

TELNET6 =

TELNET7 =

TELNET8 =

/*-----*/

/* \$SETUP SPECIFIED SYSTEM INFORMATION */

/*-----*/

JOBNAME = PROGRAM



Menu Functions Confirm Utilities Help

EDIT

MVSSSTORE.SL.SY1.JCL

Initial edit mvsjcljcl

Command ==>

Scroll ==> CSR

sub_	Name	Prompt	Size	Created	Changed	ID
	\$MIGALL		1188	2007/04/18	2007/04/18	09:36:50
	BINDONS					MSYSUSR
	BTSIZE					
	ETCUSS					
	HFSZFS					
	LEGPROF					
	LLSTCAT					
	MASTRCON					
	NEWDS					
	OLDDS					
	OLDVSAM					
	ONEBCON					
	SMSLVL					
	TN3270AS					
	ZFSMULT					

End



Menu Utilities Compilers Help

BROWSE MVSSTORE.SL.SY1.OUTPUT(\$MIGALL)

Line 00000000 Col 001 080

Command ==>

Scroll ==> CSR

```
***** Top of Data *****
/*-----*/
/* Summary status of the migration checker programs */
/*-----*/
BINDNS - EXCEPTION FOUND? No.
BTSIZE - EXCEPTION FOUND? Yes. MIGRATION ACTION REQUIRED? No but recommended.
HFSZFS - EXCEPTION FOUND? Yes. MIGRATION ACTION REQUIRED? No but recommended.
LEGPROF - EXCEPTION FOUND? Inconclusive.
LLSTCAT - EXCEPTION FOUND? No.
MASTRCON - EXCEPTION FOUND? No.
NEWDS - EXCEPTION FOUND? Yes. MIGRATION ACTION REQUIRED? Yes.
OLDDS - EXCEPTION FOUND? Yes. MIGRATION ACTION REQUIRED? Yes.
ONEBCON - EXCEPTION FOUND? Yes. MIGRATION ACTION REQUIRED? No but recommended.
SMSLVL - EXCEPTION FOUND? Yes. MIGRATION ACTION REQUIRED? No but recommended.
TN3270AS - EXCEPTION FOUND? Yes. MIGRATION ACTION REQUIRED? No but recommended.
ZFMSULT - EXCEPTION FOUND? No.
***** Bottom of Data *****
```



```
BROWSE      MVSSTORE.SL.SY1.OUTPUT(BINDDNS)      Line 00000000 Col 001 080
Command ===> _____ Scroll ===> CSR
```

```
***** Top of Data *****
```

```
----- BEGINNING OF MIGRATION CHECK -----
```

MIGRATION ACTION BEING CHECKED:

IP Services: Migrate from BIND DNS 4.9.3.

REASON THIS IS A MIGRATION ACTION:

In a future release of z/OS, support for BIND DNS 4.9.3 is planned to be discontinued. If you are using this name server, you are encouraged to find a replacement.

WHAT IS EXAMINED IN THIS CHECK:

- TCP/IP stacks are examined to see if any are active.
- BIND DNS name servers are examined to see what level they are (either 4.9.3 or 9.2.0).

PROCESS INFORMATION:

```
System name: SY1
System level: z/OS 01.07.00 HBB7720
Check started: 18 April 2007, 10:00:07
User ID: MSYSUSR
Program name: BINDDNS
Program output location: MVSSTORE.SL.SY1.OUTPUT(BINDDNS)
```

EXCEPTION FOUND? No.

The migration checker cannot determine whether you are using BIND



BROWSE MVSSTORE.SL.SY1.OUTPUT(BINDDNS)

Line 00000017 Col 001 080
Command ==> Scroll ==> CSR

PROCESS INFORMATION:

System name: SY1

System level: z/OS 01.07.00 HBB7720

Check started: 18 April 2007, 10:00:07

User ID: MSYSUSR

Program name: BINDDNS

Program output location: MVSSTORE.SL.SY1.OUTPUT(BINDDNS)

EXCEPTION FOUND? No.

The migration checker cannot determine whether you are using BIND
DNS 4.9.3 because no DNS name server has been started.

STEPS TO TAKE:

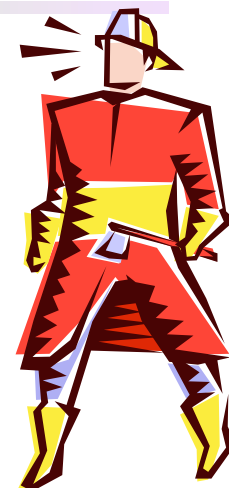
Re-run the migration checker after you have started a DNS name server.

----- END OF MIGRATION CHECK -----
***** Bottom of Data *****

IBM Migration Checker for z/OS Questions ?

EPSPT Programmatic Help With Coexistence PTFs

- ▶ **Finally, for z/OS R8 and R7! Some programmatic assistance to help you determine that you've got all the Coexistence PTFs installed for a z/OS migration!**
- ▶ **This solution uses the existing Electronic PSP Tool (EPSPT).**
 - **Coexistence PTFs are now included in the ZOSGEN subset "Extract file" for the z/OS release.**
 - **You need to use the Extract file for the z/OS release you are migrating FROM.**
 - **For example, the ZOSVIR7 ZOSGEN Extract file will contain the PTFs that z/OS R7 needs to coexist with z/OS R8.**
- ▶ **The Coexistence PTFs from the z/OS Migration book, along with any subsequently defined coexistence PTFs are now included, for a complete Coexistence PTF list.**



EPSPT Programmatic Help With Coexistence PTFs

► Steps to follow:

1. If you aren't already using EPSPT, download and install the EPSPT host tool, available from
<http://www14.software.ibm.com/webapp/set2/psp/srchBroker>
2. Download the Extract file from your current release's ZOSGEN PSP subset.
 - The coexistence PTFs needed on your "from release" for the "Migrating to release" is found in the "from" release ZOSGEN PSP bucket subset.
 - You may already be pulling the Extract file today, but perhaps not from the ZOSGEN subset.
3. Run EPSPT using the Extract file from your current release's ZOSGEN PSP bucket.
4. Review the EPSPT output report, and resolve any outstanding discrepancies.
5. Setup a job that will get the latest ZOSGEN extract file. Arrange for this job to run automatically.
6. Periodically run the EPSPT to identify any new Coexistence PTFs that have been added.



Search

Technical help database

Feedback

Technical help database

for mainframe Preventive Service Planning buckets

Search the preventive service planning database for specific installation tips, high impact or pervasive problems, and service recommendations. You will find information on both software and hardware for the zSeries family of servers. This data is updated daily. This release combines the original PSP390 and the enhanced PSP390 applications. You can now search for the contents of the PSP buckets and download their extract files from one location.

Enter search terms:

Search assistance

Go

Sort results by:

Last modified:

Rank order

All dates

EPSPT host tool

Instructions for downloading, installing, and using the EPSPT host tool.

- Download
- Install
- Use



Other search criteria:

Upgrade Name zosv1r7

Subset Name: zosgen

Other databases

- Subscription services

Downloading the EPSPT Host Tool

License Agreement

Legal Information

International License Agreement for Non-Warranted Programs Part 1 - General Terms

PLEASE READ THIS AGREEMENT CAREFULLY BEFORE USING THE PROGRAM. IBM WILL LICENSE THE PROGRAM TO YOU ONLY IF YOU FIRST ACCEPT THE TERMS OF THIS AGREEMENT. BY USING THE PROGRAM YOU AGREE TO THESE TERMS. IF YOU DO NOT AGREE TO THE TERMS OF THIS AGREEMENT, PROMPTLY RETURN THE UNUSED

Accept License Cancel

Downloading EPSPT

Prior to downloading you must review and accept the License agreement above.

The TSO TRANSMIT format binary file for EPSPT is available via anonymous ftp to ftp.software.ibm.com in directory s390/pspapartool. Click on one of the options below for detailed instructions to download EPSPT directly to the z/OS or OS/390 Host, or via the workstation.

- Downloading directly to your z/OS or OS/390 Host:
 - [Click here for instructions on submitting a Batch JOB.](#)
 - [Click here for instructions using anonymous File Transfer Protocol \(FTP\) from a TSO command line.](#)
- Downloading through the workstation:
 - [Click here for instructions to download directly from your browser to your workstation.](#)
 - [Click here for instructions using anonymous File Transfer Protocol \(FTP\) from](#)

 batch job

Using a Batch Job to Download the Host Tool

(Sample with transparent proxy)

```
//JOBNAME JOB 'XXX,XX,XXXXXX,S=I','PROG NAME',
// CLASS=X,MSGCLASS=H,MSGLEVEL=(1,1)
//*****
//* Sample using a transparent proxy
//* Use 'CAPS OFF' when editing as file names are mixed case
//*****
//FTP      EXEC PGM=FTP,REGION=5000K,
//          PARM='( EXIT'
//SYSPRINT DD  SYSOUT=$
//OUTPUT   DD  SYSOUT=$
//INPUT    DD  *
your_proxy.server.company.com
anonymous
your_email_address@company.com
cd s390/pspartool
bin
locsite recfm=fb lrecl=80 blksize=3120 tracks pri=3 sec=3
get epspt.bin 'EPSPT.DATA.SET' (REPLACE
quit
/*
```

Using a Batch Job to Download the Host Tool

(Sample signing on to proxy server)

```
//JOBNAME JOB 'XXX,XX,XXXXXX,S=I','PROG NAME',
// CLASS=X,MSGCLASS=H,MSGLEVEL=(1,1)
//*****
/* Sample using a signon to the proxy server
/* Use 'CAPS OFF' when editing as file names are mixed case
//*****
//FTP      EXEC PGM=FTP,REGION=5000K,
//          PARM='( EXIT'
//SYSPRINT DD  SYSOUT=$
//OUTPUT   DD  SYSOUT=$
//INPUT    DD  *
your_proxy.server.company.com
proxy_server_id
proxy_server_password
site ftp.software.ibm.com
user anonymous
your_email_address@company.com
cd s390/pspapartool
bin
locsite recfm=fb lrecl=80 blksize=3120 tracks pri=3 sec=3
get epspt.bin 'EPSPT.DATA.SET' (REPLACE
quit
/*
```



Search

Technical help database

Feedback

Technical help database

for mainframe Preventive Service Planning buckets

Search the preventive service planning database for specific installation tips, high impact or pervasive problems, and service recommendations. You will find information on both software and hardware for the zSeries family of servers. This data is updated daily. This release combines the original PSP390 and the enhanced PSP390 applications. You can now search for the contents of the PSP buckets and download their extract files from one locaion.

Enter search terms:

Search assistance

Go

Sort results by:

Last modified:

Rank order

All dates

EPSPT host tool

Instructions for downloading, installing, and using the EPSPT host tool.

- Download
- Install
- Use



Other search criteria:

Upgrade Name zosv1r7

Subset Name: zosgen

Other databases

- Subscription services



Installing the EPSPT Host Tool

Once you have used one of the download methods to place a dataset containing the EPSPT Host Tool (attributes are RECFM=FB, LRECL=80, BLKSIZE=3120) on your z/OS or OS/390 Host system you must use the TSO RECEIVE command from your TSO session to convert the EPSPT program back into its load module format.

- From the TSO command line, issue RECEIVE INDSN('epspt.data.set') -- where 'epspt.data.set' is the name of the FB dataset created in the previous step.

The RECEIVE INDSN(...) command will generate these messages:

Dataset WES.EPSPT.LOAD from WES on PLPSC

Members: EPSPT

Enter restore parameters or 'DELETE' or 'END' +

The original attributes of WES.EPSPT.LOAD were RECFM=U, LRECL=0, and BLKSIZE=32760. You can either receive EPSPT into an existing PDS which has identical attributes or place it into a new PDS by itself. To place it into a new or existing PDS, reply to INMR906A with the PDS name and/or with a member name (i.e. DA(PACKLIB) or DA(LIB_NAME(EPSPT)).



Search

Technical help database

Feedback

Technical help database

for mainframe Preventive Service Planning buckets

Search the preventive service planning database for specific installation tips, high impact or pervasive problems, and service recommendations. You will find information on both software and hardware for the zSeries family of servers. This data is updated daily. This release combines the original PSP390 and the enhanced PSP390 applications. You can now search for the contents of the PSP buckets and download their extract files from one location.

Enter search terms:

Search assistance

Go

Sort results by:

Last modified:

Rank order

All dates

EPSPT host tool

Instructions for downloading, installing, and using the EPSPT host tool.

- Download
- Install
- Use

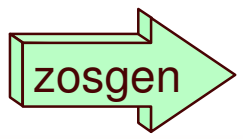
Other search criteria:

Upgrade Name zosv1r7

Subset Name: zosgen

Other databases

- Subscription services





Search

Support & downloads

Search results

Feedback

Search results

Search within results for:

Optionally, limit results by choosing one or more of the items below.

Additional search terms:

Document type:

-Preventative Service Planning

Go

Sort results by:

Date - newest first

[Search tips](#)

[New technical support search](#) [Advanced search](#) [Downloads & drivers search](#)

Product category:

Select one

Go

1 - 2 of 2 items found*

Modified date

- [1] [Upgrade ZOSV1R7, Subset ZOSGEN - Extract File](#) 2007-01-12
Extract File
[More items like this found in [z/OS](#), [OS/390](#), [MVS](#)]
- [2] [Upgrade ZOSV1R7, Subset ZOSGEN](#) 2007-01-12
Version 1, Release 6, Modification 0
[More items like this found in [z/OS](#), [OS/390](#), [MVS](#)]

*ThinkPad notebooks, ThinkCentre desktops and other PC products are now



Using a Batch Job to Download extract file (Sample with transparent proxy)

```
//JOBNAME JOB 'XXX,XX,XXXXXX,S=I','PROG NAME',  
// CLASS=X,MSGCLASS=H,MSGLEVEL=(1,1)  
//*****  
/* Sample using a transparent proxy  
/* Use 'CAPS OFF' when editing as file names are mixed case  
//*****  
//FTP      EXEC PGM=FTP,REGION=5000K,  
//          PARM='( EXIT'  
//SYSPRINT DD  SYSOUT=$  
//OUTPUT   DD  SYSOUT=$  
//INPUT    DD  *  
your_proxy.server.company.com  
anonymous  
your_email_address@company.com  
cd s390/pspartool  
locsite recfm=fb lrecl=80 blksize=3120 tracks pri=3 sec=3  
get ZOSV1R7_ZOSGEN.txt 'JBLAND.COEXIST.ZOSGEN' (REPLACE  
quit  
/*
```

```

/* Preventive Service Planning */
/* UPGRADE: ZOSV1R7, SUBSET: ZOSGEN */
/* Updates also available at ftp site: */
/* ftp site = ftp://ftp.software.ibm.com/s390/pspapartool/ */
/* ftp file = ZOSV1R7_ZOSGEN.txt */
/* Last Extract: */
/* Time = 19:13:14 */
/* Date = 03/26/2007 */
APAR(AA19950) FMID(HBB7709) FIX(UA33019) UPG(ZOSV1R7) SUB(ZOSGEN)
APAR(AA10632) FMID(HBB7720) FIX(UA26398) UPG(ZOSV1R7) SUB(ZOSGEN)
APAR(AA13294) FMID(HBB7720) FIX(UA25784) UPG(ZOSV1R7) SUB(ZOSGEN)
APAR(AA13438) FMID(HBB7720) FIX(UA24560) UPG(ZOSV1R7) SUB(ZOSGEN)
APAR(AA13837) FMID(HBB7720) FIX(UA90269) UPG(ZOSV1R7) SUB(ZOSGEN)
APAR(AA14009) FMID(HBB7720) FIX(UA24159) UPG(ZOSV1R7) SUB(ZOSGEN)
APAR(AA15144) FMID(HBB7720) FIX(UA27072) UPG(ZOSV1R7) SUB(ZOSGEN)
APAR(AA15835) FMID(HBB7720) FIX(UA25588) UPG(ZOSV1R7) SUB(ZOSGEN)
APAR(AA17662) FMID(HBB7720) FIX(UA29484) UPG(ZOSV1R7) SUB(ZOSGEN)
APAR(AA19950) FMID(HBB7720) FIX(UA33020) UPG(ZOSV1R7) SUB(ZOSGEN)
APAR(AA14334) FMID(HCS7720) FIX(UA90273) UPG(ZOSV1R7) SUB(ZOSGEN)
APAR(AA12683) FMID(HDZ11K0) FIX(UA24413) UPG(ZOSV1R7) SUB(ZOSGEN)
APAR(AA13177) FMID(HDZ11K0) FIX(UA25405) UPG(ZOSV1R7) SUB(ZOSGEN)
APAR(AA13332) FMID(HDZ11K0) FIX(UA21542) UPG(ZOSV1R7) SUB(ZOSGEN)
APAR(AA13355) FMID(HDZ11K0) FIX(UA22045) UPG(ZOSV1R7) SUB(ZOSGEN)
APAR(AA13525) FMID(HDZ11K0) FIX(UA22351) UPG(ZOSV1R7) SUB(ZOSGEN)
APAR(AA13687) FMID(HDZ11K0) FIX(UA22716) UPG(ZOSV1R7) SUB(ZOSGEN)
APAR(AA14568) FMID(HDZ11K0) FIX(UA24374) UPG(ZOSV1R7) SUB(ZOSGEN)
APAR(AA15450) FMID(HDZ11K0) FIX(UA25145) UPG(ZOSV1R7) SUB(ZOSGEN)
APAR(AA15786) FMID(HDZ11K0) FIX(UA25145) UPG(ZOSV1R7) SUB(ZOSGEN)
APAR(AA15873) FMID(HDZ11K0) FIX(UA00015) UPG(ZOSV1R7) SUB(ZOSGEN)
APAR(AA15990) FMID(HDZ11K0) FIX(UA25405) UPG(ZOSV1R7) SUB(ZOSGEN)
APAR(AA14907) FMID(HDZ11VS) FIX(UA25099) UPG(ZOSV1R7) SUB(ZOSGEN)
APAR(AA15814) FMID(HDZ11VS) FIX(UA25099) UPG(ZOSV1R7) SUB(ZOSGEN)

```


Technical help database

for mainframe Preventive Service Planning buckets

Search the preventive service planning database for specific installation tips, high impact or pervasive problems, and service recommendations. You will find information on both software and hardware for the zSeries family of servers. This data is updated daily. This release combines the original PSP390 and the enhanced PSP390 applications. You can now search for the contents of the PSP buckets and download their extract files from one location.

Enter search terms: [Search assistance](#)

Sort results by: Rank order
Last modified: All dates

Other search criteria:

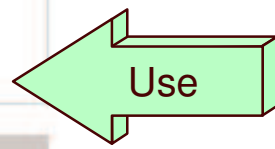
Upgrade Name zosv1r7

Subset Name: zosgen

EPSPT host tool

Instructions for downloading, installing, and using the EPSPT host tool.

- Download
- Install
- Use



Other databases

- Subscription services

Using the EPSPT Host Tool

Once the EPSPT Host Tool is installed, you may need to utilize a STEPLIB, JOBLIB, TSOLIB or LNKLSTxx to make this dataset accessible on the system.

Once the EPSPT program is in the normal module search list, any user can run the report tool.

SAMPLE JCL to run the EPSPT Host Tool is shown below. Lower case text in the sample reflects data which must be modified. Additional information follows this sample, but a basic knowledge of JCL is assumed.

```
//jobname JOB ...
//*****
/** SMP/E: RUN PSP COMPARE AND REPORT TOOL
//*****
//stepname EXEC PGM=EPSPT,PARM='zonename'
//STEPLIB DD DSN=epspt.load.lib,DISP=SHR
//SMPCSI DD DSN=smp.csi.dsname,DISP=SHR
//SYSIN DD DSN=list_of_service.dataset,DISP=SHR
//OUTPUT DD SYSOUT=*
/**OUTPUT DD DSN=output.report.dataset,DISP=(NEW,CATLG,DELETE),
//* SPACE=(TRK,(100,10)),
//* DCB=(RECFM=FB,LRECL=80,BLKSIZE=160)
//OUTPUTL DD SYSOUT=*
/**OUTPUTL DD DSN=output.log.dataset,DISP=(NEW,CATLG,DELETE),
//* SPACE=(TRK,(100,10)),
/** DCB=(RECFM=FB,LRECL=80,BLKSIZE=160)
//SYSPRINT DD *
/*
```

Using the EPSPT Host Tool (cont.)

EXEC statement parameters:

Replace "zonename" in the sample with the zone to check.

DD Statements:

DDNames SYSIN, OUTPUT, OUTPUTL and SYSPRINT are required.

SMPCSI statement:

This DD defines the SMP/E CSI dataset.

Replace "smpe.csi.dsname" in the sample with the name of the SMP/E CSI dataset.

SYSIN statement:

This DD defines the dataset containing the list of required service.

The format of the dataset is: APAR(APAR-number) FMID(FMIDxxx) FIX(PTF-number).

OUTPUT statement:

This DD defines the dataset to contain the summary report. This report will identify any service contained the

list which is NOT installed in the specified target zone.

This may be either an explicit dataset or the default output (SYSOUT=*).

OUTPUTL statement:

This DD defines the dataset to contain the output log. The log file contains the details of which FMIDs were found and not found from the input file, and for found FMIDs the results that appear in the summary report.

This may be either an explicit dataset or the default output (SYSOUT=*).

SYSPRINT statement:

This DD defines the dataset to contain the job output.

"OUTPUT" Showing Missing Fix

***** TOP OF DATA *****

Report Level: 1.04.4 Last Update: 2005/08/17

For target zone TGTZ17

HOLD	APAR	-RESOLVING	SYSMOD-	RELEVANT
FMID	NUMBER	NAME	RECEIVED	UPGRADE+SUBSET

HBB7720 AA19950 UA33020 No ZOSV1R7_ZOSGEN

NOTE: An asterisk denotes an APAR that has been previously mentioned in this report.

* SUMMARY *

FMIDs	applicable:	13
APARs	applied:	36
APARs	required:	1
PTFs	received:	0

***** BOTTOM OF DATA *****

"OUTPUTL" Showing Missing Fix

***** TOP OF DATA *****

Report Level: 1.04.4 Last Update: 2005/08/17

For target zone TGTZ17

HBB7709 AA19950 UA33019 ZOSV1R7_ZOSGEN

MSG 103: FMID HBB7709 NOT PRESENT

HBB7720 AA10632 UA26398 ZOSV1R7_ZOSGEN

MSG 102: FMID HBB7720 PRESENT

MSG 200: APAR AA10632 APPLIED

.
. .

HBB7720 AA19950 UA33020 ZOSV1R7_ZOSGEN

MSG 101: FMID HBB7720 PRESENT

MSG 201: APAR AA19950 NOT APPLIED

MSG 301: PTF UA33020 NOT RECEIVED

HCS7720 AA14334 UA90273 ZOSV1R7_ZOSGEN

MSG 102: FMID HCS7720 PRESENT

MSG 200: APAR AA14334 APPLIED

.
. .
. .

"OUTPUT" No Missing Fixes

***** TOP OF DATA *****

Report Level: 1.04.4 Last Update: 2005/08/17

For target zone TGTZ18

HOLD	APAR	-RESOLVING	SYSMOD-	RELEVANT
FMID	NUMBER	NAME	RECEIVED	UPGRADE+SUBSET

NOTE: An asterisk denotes an APAR that has been previously mentioned in this report.

* SUMMARY *

NO APARs/PTFs required.

FMIDs applicable:	0
APARs applied:	0
APARs required:	0
PTFs received:	0

***** BOTTOM OF DATA *****

Summary



The EPSPT Tool

- ▶ Use the EPSPT tool to help you identify missing Coexistence PTFs.
- ▶ Set up jobs to run weekly that will obtain the latest ZOSGEN extract file.
- ▶ Run the EPSPT tool periodically to stay current with Coexistence Requirements.

The IBM Migration Checker for z/OS

- ▶ Use this tool with the z/OS VIR8 Migration manual to help you determine the applicability of migration actions to your currently running system.
- ▶ As your system configuration changes, it is beneficial to rerun the IBM Migration Checker for z/OS. Because no changes are made to your system, it is safe to rerun the migration programs as often as you wish.
- ▶ The IBM Migration Checker for z/OS only evaluates your "currently active" system. So for complete coverage, run the tool:
 - Before installing your z/OS release
 - to detect migration actions that you can do now to ease your migration to z/OS VIR8
 - Alert you to migration actions that you should plan for in the future.
 - After you IPL your new z/OS release to verify that you've completed the migration actions correctly.
 - And each time you deploy your z/OS release into a new environment.

EPSPT Questions ?

End