

LOTUSPHERE 2002

Lotus software

# PROOF POSITIVE

SHARE 98 Session 8637  
QuickPlace for Domino/390

Rufus Woody III  
Domino/zSeries Technical Support  
IBM Advanced Technical Support

IBM

## Agenda

- What is QuickPlace?
- The QuickPlace Missions
- An Abbreviated History
- Release Strategy and Futures
- Installing QuickPlace/390
- Adding Sametime ....

LOTUSPHERE 2002

Lotus software

# PROOF POSITIVE

What is QuickPlace?



IBM

## "Instant" Team Collaboration Groupware

- Primarily designed for smaller groups or teams
- Requires minimal support from IT
- Emphasis on getting the job done
- Limited duration of use
- Easy to install, set up, and get started
- Easy for users to create, manage, and customize
  - But sophisticated customization requires detailed technical skills
    - business as usual ....
- Project-centered or activity-oriented
- Facilitates team collaboration

## Lotus QuickPlace

- The self-service Web tool for team collaboration
- Fosters the creation of secure team workspaces on the web, instantly
- Integrates with/leverages your infrastructure
- The three Cs of Lotus QuickPlace:
  - Coordinate
  - Collaborate
  - Communicate

LOTUSPHERE 2002

Lotus software

LOTUSPHERE 2002

Lotus software

# PROOF POSITIVE

The QuickPlace Missions



IBM

## The QuickPlace Product Mission

- QuickPlace enables the minds of e-business teams
- QuickPlace is easy and cost-effective to deploy, run, and manage
- QuickPlace is a standards-based platform for developing reusable team solutions
- QuickPlace is a leadership product in the IBM software strategy for e-business

LOTUSPHERE 2002

Lotus software



## Mission for QuickPlace End-users

- QuickPlace brings the team together
- QuickPlace helps people be effective team players
- QuickPlace makes it easier to run a team
- QuickPlace doesn't get in the way
- QuickPlace helps users help themselves



## Mission for QuickPlace Administrators

- QuickPlace minimizes the costs of deploying and managing large-scale, mission-critical team solutions by meeting IBM's high standards for
  - ▶ Interoperability
  - ▶ Availability
  - ▶ Scalability
  - ▶ Manageability
- QuickPlace helps users help themselves

## Mission for QuickPlace Developers

- QuickPlace is standards-based
  - HTTP, HTML, XML, J2EE, Web Services, etc.
  - Sophisticated customization requires detailed technical skills ....
- QuickPlace fosters and encourages reuse
- QuickPlace is the team component in any web application
- QuickPlace helps users help themselves

LOTUSPHERE 2002

Lotus software

# PROOF POSITIVE

*A Brief History*



IBM

## Lotus QuickPlace 1.0: 1999

- Lessons learned:
  - Strong reviews and customer interest
  - Won a big deal with a big Customer
  - Focus on enterprise requirements
  - No one deletes a QuickPlace...

LOTUSPHERE 2002

Lotus software

## QuickPlace 2.0: 2000

- **New Features:**
  - Strong Microsoft Office integration
  - Lightweight project management tools
  - Customization: PlaceTypes, Themes, PlaceBots, custom HTML forms, QDK
  - Directory integration: Domino or LDAP

## QuickPlace Today

- **Widely deployed:** >2000 enterprise Customers
  - Petroleum, retail, government, finance, insurance, automotive, consulting, health care, computer services, ....
- **Lots of enhancements since 2.0:**
  - Stability & performance improvements
  - Availability: clustering & failover
  - Manageability: admin utility
  - OSes: Microsoft Win32, Solaris, OS/400, AIX, OS/390
  - Directory options: Directory Assistance, groups
  - Security: Tivoli Policy Director, iPlanet, others
  - Fourteen languages

LOTUSPHERE 2002

Lotus software

- ▶ **Admin Utility:**
  - ▶ View statistics for the server, including total number and size of QuickPlaces, the current license count, and statistics for individual QuickPlaces including name, managers, size and time last accessed.
  - ▶ Archive QuickPlaces to secondary storage.
  - ▶ Communicate with QuickPlace managers using e-mail.
  - ▶ Enforce size and time limits by sending e-mail to managers or by archiving QuickPlaces.
  - ▶ Set up a Super User account with manager-level access to all QuickPlaces on the server.
  - ▶ Enable replication of QuickPlaces between clustered servers.

LOTUSPHERE 2002

Lotus software

# PROOF POSITIVE

Release Strategy and Futures



IBM



## QuickPlace's Next Release

- A major feature release
- Planned for 2002
- Subsequent/new releases will be scheduled to best meet business and Customer requirements
- Sneak preview of requirements/features ....

LOTUSPHERE 2002

Lotus software

## New Requirements/Features: End Users

- Awareness & chat
- Scheduled and instant e-meetings
- Calendar integration
- My QuickPlaces
- Cross-QP search
- Scoped search
- Office XP support
- Site map
- User interface refresh
- Quicker user lookup
- User-specified timezone
- Reverse folder sorting
- Accessibility (ADA)
- GBI8030
- DBCS user names
- IE 6, Windows XP
- DOLS

## New Requirements/Features: Developers

- Standards-based remote APIs (Web Services)
  - First batch:
    - ▶ Create/delete place from PlaceType
    - ▶ Add/update/remove member
    - ▶ My QuickPlaces
- Powerful template mechanism in PlaceTypes enables a whole new range of applications
  - Robust support for Refresh/Replace Design
  - Centralized refresh to all children

## New Requirements/Features: Administrators

- Multi-server QuickPlace directory
- Multi-server license & usage tracking
- More compatibility for Domino administrators
- More complete LDAP
- Consistent user names
- More concurrent users
- Clustering on all platforms
- Selective replication
- Live "qpmove"
- Better documentation

## Conclusion

- The next release of Lotus QuickPlace will be a major feature release
- It is a major step forward in our mission to...
  - Enable the minds of e-business teams
  - Be cost-effective to deploy, run, and manage
  - Be the platform for reusable team solutions

LOTUSPHERE 2002

Lotus software

# PROOF POSITIVE

Installing QuickPlace/390



IBM

## Installing QuickPlace/390

- First install Domino/390 partition ....
  - QuickPlace/390 will run on top of Domino/390
- Verify the Domino/390 installation ....
  - You'll use the same server ID and cert ID
  - Two (2) TCP/IP settings in notes.ini ....
- Shut down Domino/390
  - We're going to load QuickPlace/390 on top of Domino/390 using the same directory ....
- Do the following steps as "superuser" ....



## Installing QuickPlace/390 (cont.)

- Change to the Domino/390 installation directory
  - `cd /usr/lpp/lotus`
- Rename the current install tree
  - `mv /usr/lpp/lotus/os390 /whateveryouwant`
- Locate the tar file
  - `s390qp2080.tar`
- Extract the QuickPlace/390 ("untar") files
  - `tar -xvzf s390qp2080.tar`
- Use the install dialog
  - `./os390/install`

# Installing QuickPlace/390 (cont.)

```
Mps02 - CRT
File Edit View Options Transfer Script Window Help
-----
Lotus QuickPlace Server Installation
-----
Welcome to the QuickPlace Server Install Program.

Type h for help on how to use this program.
Press TAB to begin the installation.

Type h for help
Type e to exit installation
Press TAB to continue to the next screen.
-----
Ready          Telnet          19, 1  28 Rows, 83 Cols  VT100
```

```
Mps02 - CRT
File Edit View Options Transfer Script Window Help
-----
Lotus QuickPlace Server Installation
-----
In order to proceed with the installation of the QuickPlace Server,
you must read and agree with the terms and conditions of the
QuickPlace Software Agreement.

Press TAB to read the QuickPlace Software Agreement.

Type e to exit the Install program.
Press ESC to return to the previous screen.
Press TAB to continue to the next screen.
-----
Ready          Telnet          19, 1  28 Rows, 83 Cols  VT100
```

# Installing QuickPlace/390 (cont.)

```
Mps02 - CRT
File Edit View Options Transfer Script Window Help
-----
Lotus QuickPlace Server Installation
-----
Lotus software agreement
-----
IF YOU DO NOT AGREE WITH THESE TERMS AND CONDITIONS, DO NOT INSTALL THE
SOFTWARE AND RETURN THIS ENTIRE PACKAGE WITHIN 30 DAYS OF SALE WITH YOUR
RECEIPT FOR A FULL REFUND.

1. USE
You (an entity or a person) may use Lotus QuickPlace (the "Software"),
in the quantity purchased, if you meet the following conditions. In
addition you may make one (1) archival copy of the Software.

LOTUS QUICKPLACE
QUICKPLACE PER USER LICENSE
A QuickPlace Per User License is required for each employee or
independent contractor in your Enterprise who initiates the creation of
and/or participates in any QuickPlace applications). For users who are
not employees or independent contractors of your Enterprise, you must
acquire either a QuickPlace Per User License or a QuickPlace Extranet
Server License; however, for users who are employees or independent
contractors of your Enterprise, your sole licensing option is to
purchase one QuickPlace Per User License per each such employee or
independent contractor. You are not permitted to use the Program to
provide hosting services to any third parties.
>>> Press any key to continue <<<
Ready Telnet 27, 34 28 Rows, 83 Cols NT100
```

```
Mps02 - CRT
File Edit View Options Transfer Script Window Help
-----
8. GENERAL
No Lotus dealer, distributor, agent or employee is authorized to make
any modification or addition to this Agreement. The Software contains
cryptographic functions which are subject to special export licensing
requirements by the U.S. Department of Commerce. It is your
responsibility to comply with all such regulations. For use of the
Software in North America and Latin America, this Agreement will be
governed by the laws of the Commonwealth of Massachusetts. For all other
countries, this Agreement will be governed by the laws of the country in
which the Software was purchased.
For U.S. customers: Should you have any questions concerning this
Agreement or Lotus' software use policies, write to Inside Sales and
Service, Lotus Development Corporation, 55 Cambridge Parkway, Cambridge,
MA 02142, or call 1-800-343-5434.
For Canadian customers: Should you have any questions concerning this
Agreement or Lotus' software use policies, write to Customer Service,
Lotus Development Canada Limited, P.O. Box 679, Scarborough, Ontario M1K
5S5, or call 1-800-465-8887.
For Latin American customers: Should you have any questions concerning
this Agreement or Lotus' software use policies, call or write your local
sales office.
For customers in all other countries: Please call or write your local
Lotus sales office.

Press the Escape key to go back to the previous screen
or
Press the Tab key to continue...
Ready Telnet 28, 1 28 Rows, 83 Cols NT100
```

# Installing QuickPlace/390 (cont.)

```
Mprs02 - CRT
File Edit View Options Transfer Script Window Help
-----
Lotus QuickPlace Server Installation
-----
You may proceed with the installation only if you agree to the
terms and conditions of the QuickPlace Software Agreement.

Type e to exit the Install program.
Press ESC to return to the previous screen.
Press the Spacebar to change the setting until you get the one you want.
Press TAB to accept a setting and continue to the next screen.

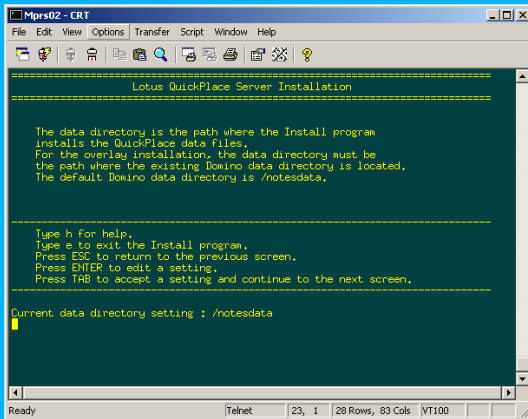
>>> Do you agree to the terms of the license agreement? [Yes]
Ready                               Tshet | 21, 63 | 28 Rows, 83 Cols | VT100
```

```
Mprs02 - CRT
File Edit View Options Transfer Script Window Help
-----
Lotus QuickPlace Server Installation
-----
The program directory is the path where the Install program
installs the QuickPlace program files.
For the overlay installation, the program directory must be
the path where the existing Domino program directory is located.
The default Domino program directory is /usr/lpp/lotus.

Type h for help.
Type e to exit the Install program.
Press ESC to return to the previous screen.
Press ENTER to edit a setting.
Press TAB to accept a setting and continue to the next screen.

Current program directory setting : /usr/lpp/lotus
Ready                               Tshet | 23, 1 | 28 Rows, 83 Cols | VT100
```

# Installing QuickPlace/390 (cont.)



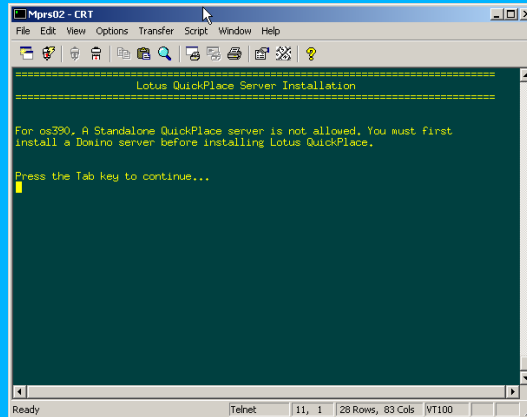
```
Mpr02 - CRT
File Edit View Options Transfer Script Window Help
-----
Lotus QuickPlace Server Installation
-----
The data directory is the path where the Install program
installs the QuickPlace data files.
For the overlay installation, the data directory must be
the path where the existing Domino data directory is located.
The default Domino data directory is /notesdata.

Type h for help.
Type e to exit the Install program.
Press ESC to return to the previous screen.
Press ENTER to edit a setting.
Press TAB to accept a setting and continue to the next screen.

Current data directory setting : /notesdata
|
Ready Telnet 23, 1 28 Rows, 83 Cols VT100
```

<== Using the WRONG directory !!

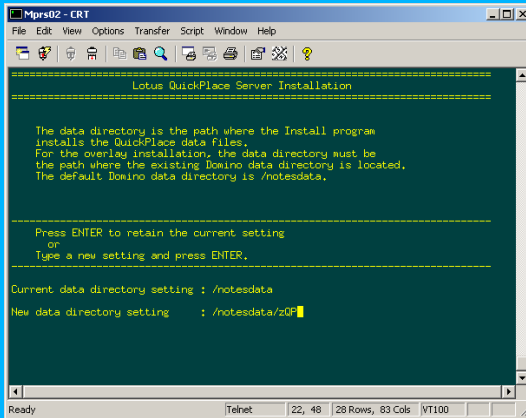
Results in this error message ==>



```
Mpr02 - CRT
File Edit View Options Transfer Script Window Help
-----
Lotus QuickPlace Server Installation
-----
For os390, a Standalone QuickPlace server is not allowed. You must first
install a Domino server before installing Lotus QuickPlace.

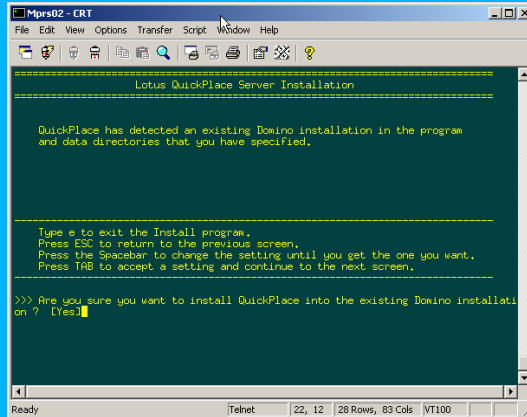
Press the Tab key to continue...
|
Ready Telnet 11, 1 28 Rows, 83 Cols VT100
```

# Installing QuickPlace/390 (cont.)

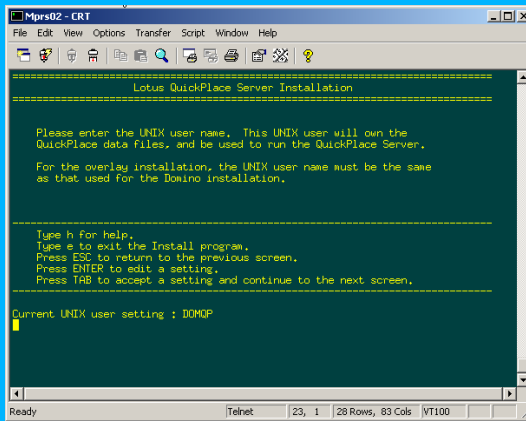


Note: The "proper" location for the QuickPlace data directory is "below" the "normal" Domino data directory ... !!

If you get this result, ==> you've specified the QuickPlace data directory correctly ....



# Installing QuickPlace/390 (cont.)



Mprsr02 - CRT

File Edit View Options Transfer Script Window Help

Lotus QuickPlace Server Installation

-----

Please enter the UNIX user name. This UNIX user will own the QuickPlace data files, and be used to run the QuickPlace Server.

For the overlay installation, the UNIX user name must be the same as that used for the Domino installation.

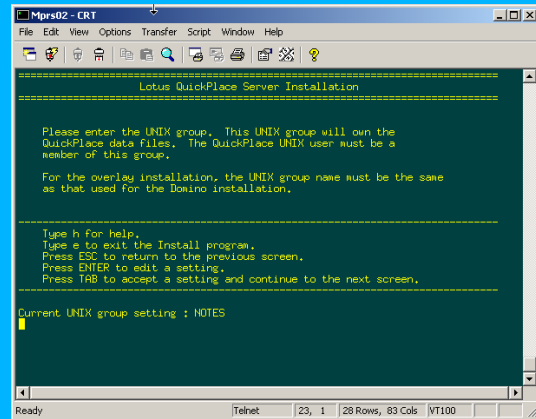
-----

Type h For help.  
Type e to exit the Install program.  
Press ESC to return to the previous screen.  
Press ENTER to edit a setting.  
Press TAB to accept a setting and continue to the next screen.

-----

Current UNIX user setting : DOMOP

Ready Telnet 23, 1 28 Rows, 83 Cols VT100



Mprsr02 - CRT

File Edit View Options Transfer Script Window Help

Lotus QuickPlace Server Installation

-----

Please enter the UNIX group. This UNIX group will own the QuickPlace data files. The QuickPlace UNIX user must be a member of this group.

For the overlay installation, the UNIX group name must be the same as that used for the Domino installation.

-----

Type h For help.  
Type e to exit the Install program.  
Press ESC to return to the previous screen.  
Press ENTER to edit a setting.  
Press TAB to accept a setting and continue to the next screen.

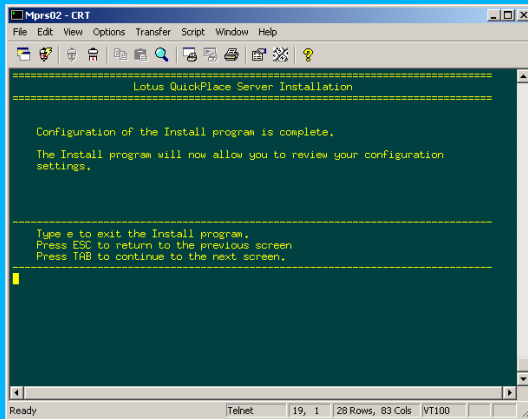
-----

Current UNIX group setting : NOTES

Ready Telnet 23, 1 28 Rows, 83 Cols VT100

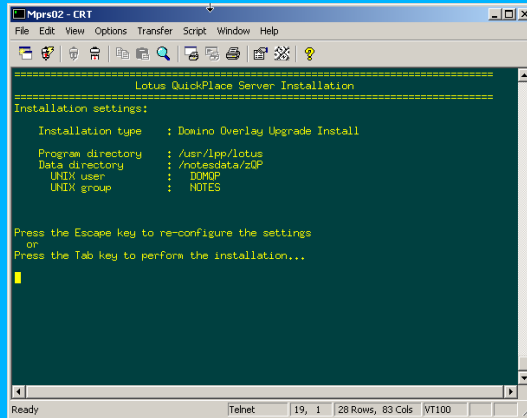


# Installing QuickPlace/390 (cont.)



```
Mprsr02 - CRT
File Edit View Options Transfer Script Window Help
-----
Lotus QuickPlace Server Installation
-----
Configuration of the Install program is complete.
The Install program will now allow you to review your configuration
settings.

Type e to exit the Install program.
Press ESC to return to the previous screen.
Press TAB to continue to the next screen.
|
Ready Telet 19, 1 28 Rows, 83 Cols VT100
```



```
Mprsr02 - CRT
File Edit View Options Transfer Script Window Help
-----
Lotus QuickPlace Server Installation
-----
Installation settings:
Installation type : Domino Overlay Upgrade Install
Program directory : /usr/lpp/lotus
Data directory : /notesdata/zQP
UNIX user : DDMQP
UNIX group : NOTES

Press the Escape key to re-configure the settings
or
Press the Tab key to perform the installation...
|
Ready Telet 19, 1 28 Rows, 83 Cols VT100
```

# Installing QuickPlace/390 (cont.)

```
Mprs02 - CRT
File Edit View Options Transfer Script Window Help

Finished 18% setup...
Status: Rebuilding full text search index for QuickPlace: "help"...
03/05/2002 09:03:20 PM Index update process started
03/05/2002 09:03:20 PM Updating search site database
"QuickPlace/help/Search.nsf"
03/05/2002 09:03:20 PM Finished updating search site database
"QuickPlace/help/Search.nsf"
03/05/2002 09:03:33 PM Index update process shutdown
Finished 27% setup...
Status: Upgrading QuickPlace: "quickplace"...
Finished 36% setup...
Status: Upgrading QuickPlace: "zseries_cafe"...
Finished 45% setup...
Finished 54% setup...
Status: Upgrading QuickPlace: "zquick"...
Finished 63% setup...
Finished 72% setup...
Finished 78% setup...
Status: Security has been successfully setup...
Finished 90% setup...
Finished 100% setup...
The installation completed successfully.

Please be sure to login as the appropriate UNIX user
before running QuickPlace - Do not run as root.

/user/lpp/lotus>
```

Now start the server (as non-superuser!) ==>

<== The QuickPlace/390 "installation" is done

```
Mprs02 - CRT
File Edit View Options Transfer Script Window Help

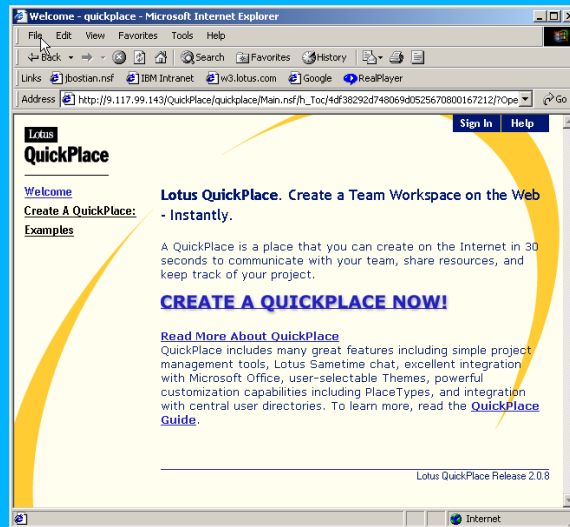
IDMNP:/notesdata/zQP: > server

Lotus Domino (r) Server, Release 5.0.8 , June 20, 2001
Copyright (c) 1985-2001, Lotus Development Corporation, All Rights Reserved

03/05/2002 09:07:21 PM Router: notes.ini setting for Log_Mailrouting being
used (note - this option may now be configured in a Server Configuration
document.)
03/05/2002 09:07:21 PM Mail Router started for domain ESERVER
03/05/2002 09:07:21 PM Router: Internet SMTP host MPRS02 in domain POK.IBM.COM
03/05/2002 09:07:25 PM Database Replicator started
03/05/2002 09:07:31 PM Index update process started
03/05/2002 09:07:36 PM Agent Manager started
03/05/2002 09:07:37 PM RMgr: Executive "1" started
03/05/2002 09:07:37 PM RMgr: Executive "2" started
03/05/2002 09:07:41 PM lHub/EServer is the Administration Server of the Domino
Directory.
03/05/2002 09:07:41 PM Administration Process started
03/05/2002 09:07:46 PM Stats agent started
03/05/2002 09:07:52 PM JVM: Java Virtual Machine initialized.
03/05/2002 09:07:56 PM Database Server started
> 03/05/2002 09:07:58 PM QuickPlace Server started. 208113.00
03/05/2002 09:08:41 PM HTTP Web Server started

03/05/2002 09:08:56 PM 0 Transactions/Minute, 0 Users
>
```

# Installing QuickPlace/390 (cont.)



QuickPlace/390 is up and running ... !!

LOTUSPHERE 2002

Lotus software

# PROOF POSITIVE

Adding Sametime



IBM

## Adding Sametime

- Current Sametime/390 plan .... :-)
- Sametime SDK
  - Sametime Java Toolkit
  - Sametime Links <== Focus here !!
  - Sametime C++ Toolkit
  - Sametime SDK Futures
- For more information, see:
  - <http://www.lotus.com/sametime>
  - and -
  - <http://www.lotus.com/sametimedevelopers>

## Adding Sametime (cont.)

- Links Toolkit (beta)
  - Simple API - Using any web design tool, existing names in a web page are turned into Sametime links simply by adding a few lines of HTML
  - Easy to use - No programming or layout changes required to enable a web page
  - Light weight - The total size of the applet embedded in the web page/application is approximately 20K
  - Rich feature set - Awareness with status icons, instant messages and n-way chat, launch instant meetings, set status, chat rooms
  - No Installation - The integration with the site/application should be transparent to the end-user. No installation or code that requires execution privileges (signed applet)
  - Extranet Support - Uses HTTP to communicate with the Sametime server for connectivity (works through firewalls)
  - Authentication - Supports transparent authentication by access token. No need to challenge users that have already logged onto the web application
  - Encryption - The same level of chat encryption provided by other Sametime clients

LOTUSPHERE 2002

Lotus software

# PROOF POSITIVE

Questions?

Rufus Woody III  
[rufusw@us.ibm.com](mailto:rufusw@us.ibm.com)

IBM