



IBM Software Group

## Enterprise Modernization Made Easy with IBM Development Tools



@business on demand software

[jocasey@us.ibm.com](mailto:jocasey@us.ibm.com)

# Enterprise Modernization Agenda

- **Positioning**
- **Improve**
- **Transform**
- **Innovate**
- **Summary**



## Meeting the On Demand Challenge

- **Significant business intelligence exists**

- ▶ "200 Billion lines of COBOL code in existence" *eWeek*
- ▶ "5 Billion lines of COBOL code added yearly" *Bill Ulrich, TSG Inc.*
- ▶ "Between 850K and 1.3 Million COBOL developers" *IDC*
- ▶ "Majority of customer data still on mainframes" *Computerworld*

- **Rewriting is an option but.....**

- ▶ How long will it take?
- ▶ Who will do it?
- ▶ How much will it cost?

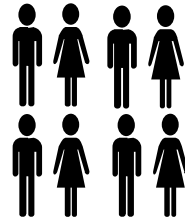


# Enterprise Modernization Strategy

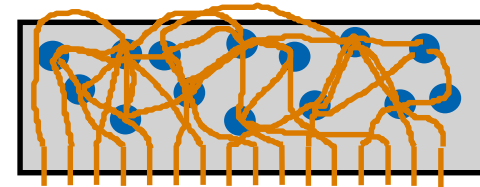
- **Leverage existing applications and skills**
  - ▶ reduce costs
  - ▶ "New code costs 5X reusing existing code"  
*Software Productivity Research*
  - ▶ achieving faster time to market



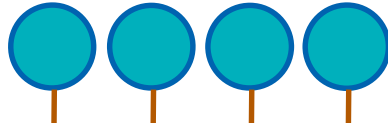
↓  
**e-business  
transaction  
server**



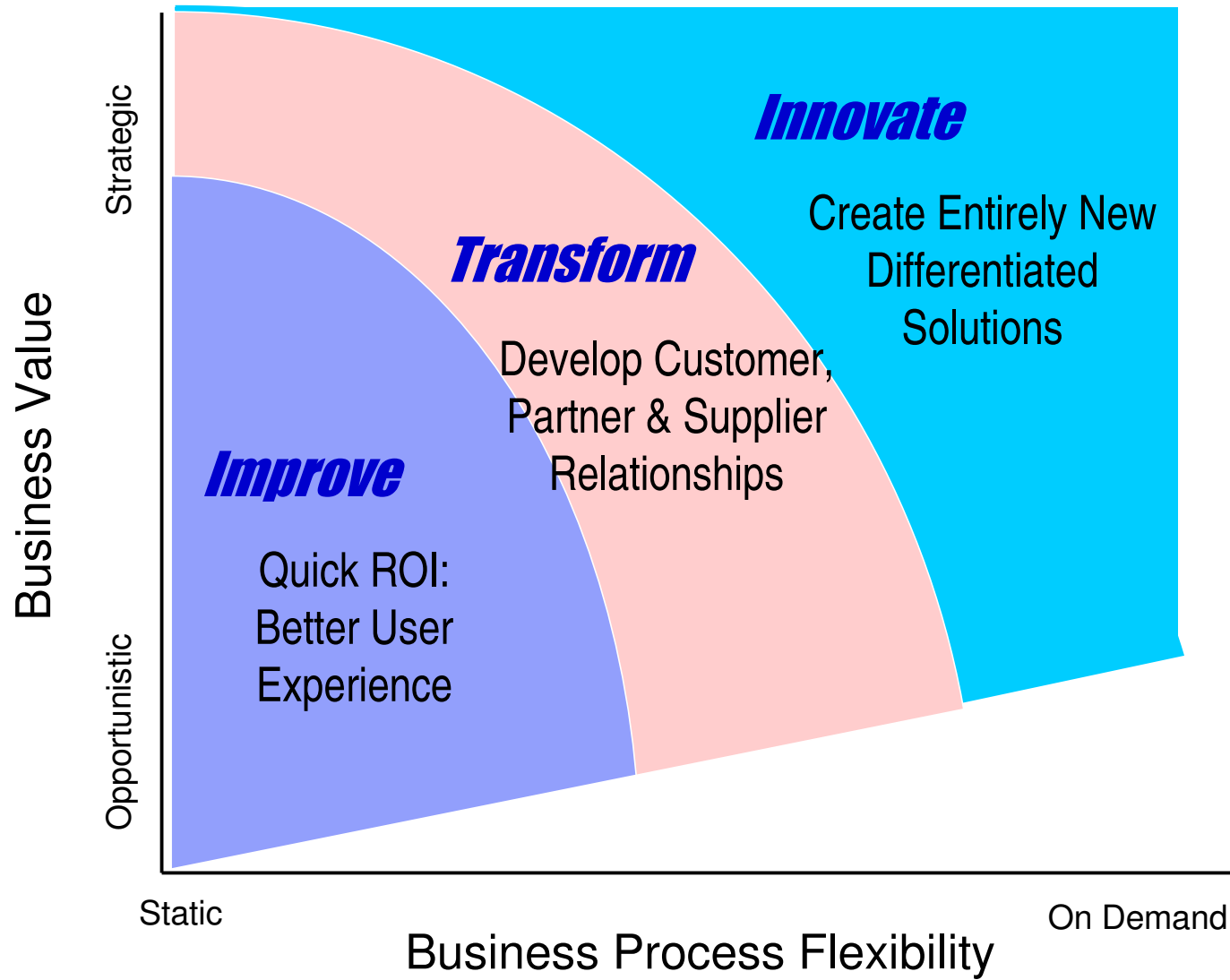
↓  
**e-business  
component  
developers**



↓  
**e-business components**



# Three Styles of Modernization



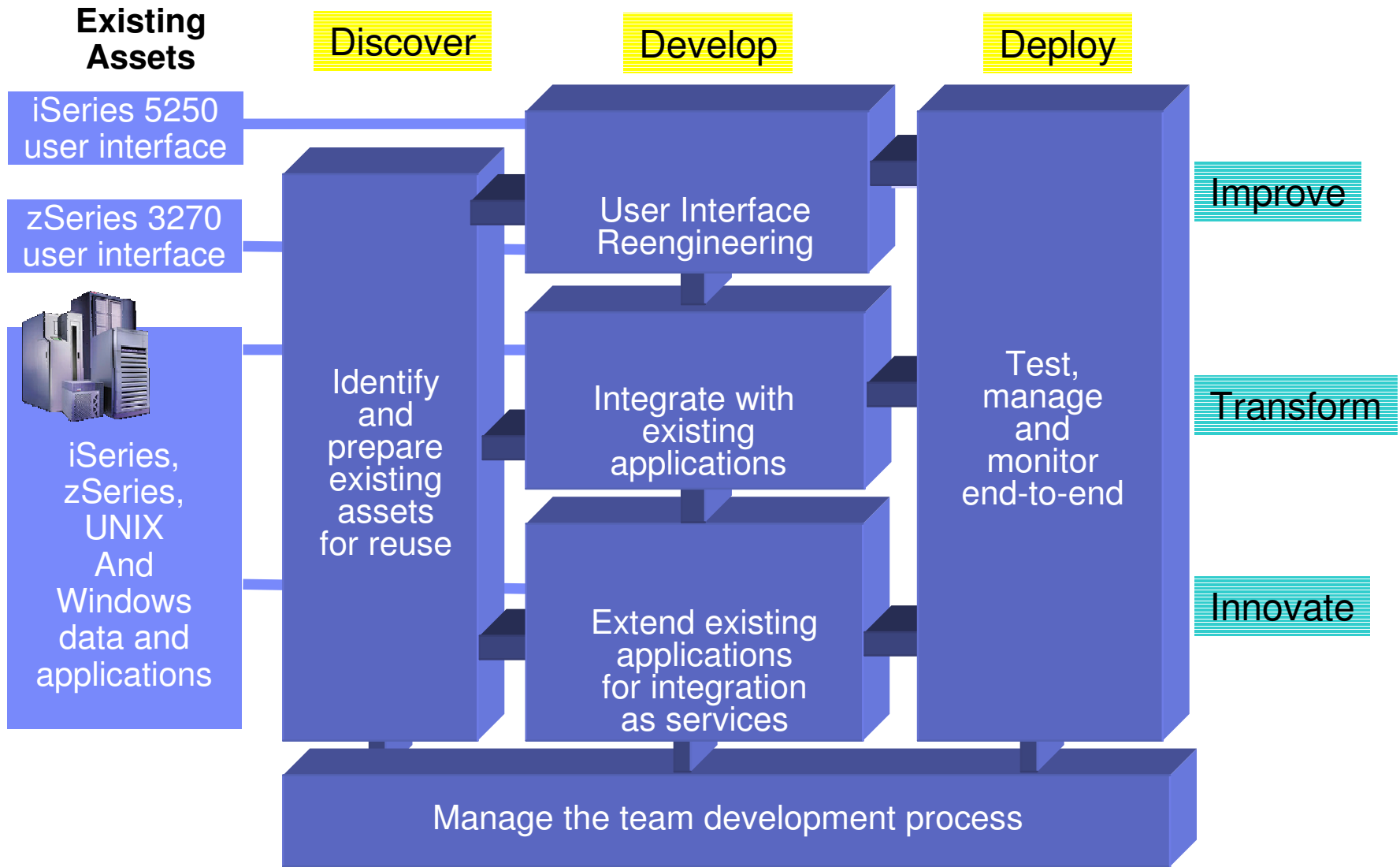
# Modernization Styles: A Continuum of Solutions

*A roadmap for solving problems....*

Segment	Problem	What value do customers want?	Solution
Improve	Application interfaces are difficult to use, user workflows are outdated	Quick ROI: Better User Experience	<b>Improve the user interface</b> and workflows of multiple mission-critical applications to reduce training costs, increase end-user productivity and extend reach to new users
Transform	Legacy applications cannot easily be integrated into modern workflows	Develop Customer, Partner & Supplier Relationships	Transform applications to participate in <b>modern e-business workflows</b> with lower risk than replacement strategies
Innovate	Mission critical processes cannot easily be adapted to changing market conditions	Create Entirely New Differentiated Solutions	Innovate by <b>componentizing mission-critical applications</b> to enable core processes to be independently modernized and flexibly integrated – on demand



# IBM's Enterprise Modernization Solution



# Enterprise Program Model

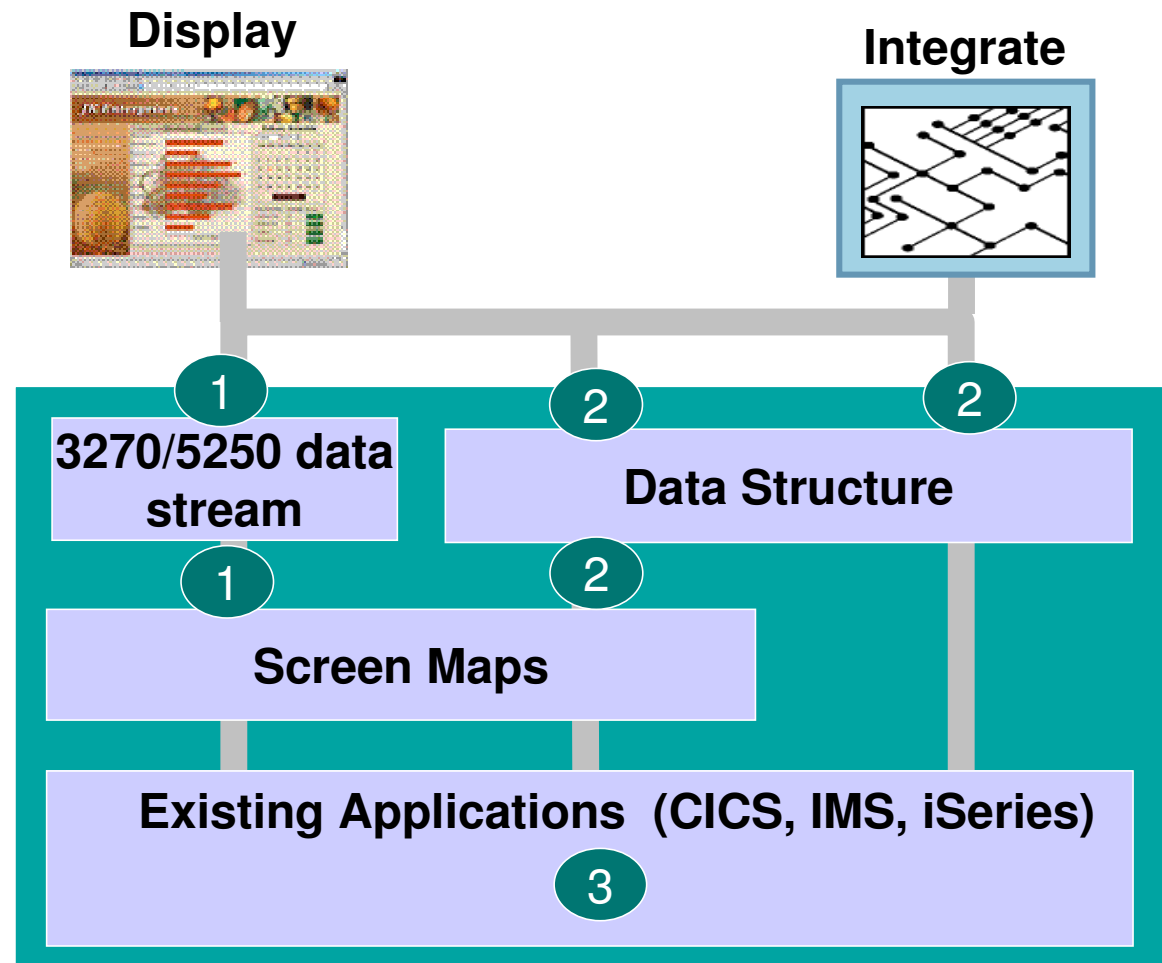
Develop

?

Value in circle = style

- Improve
- Transform
- Innovate

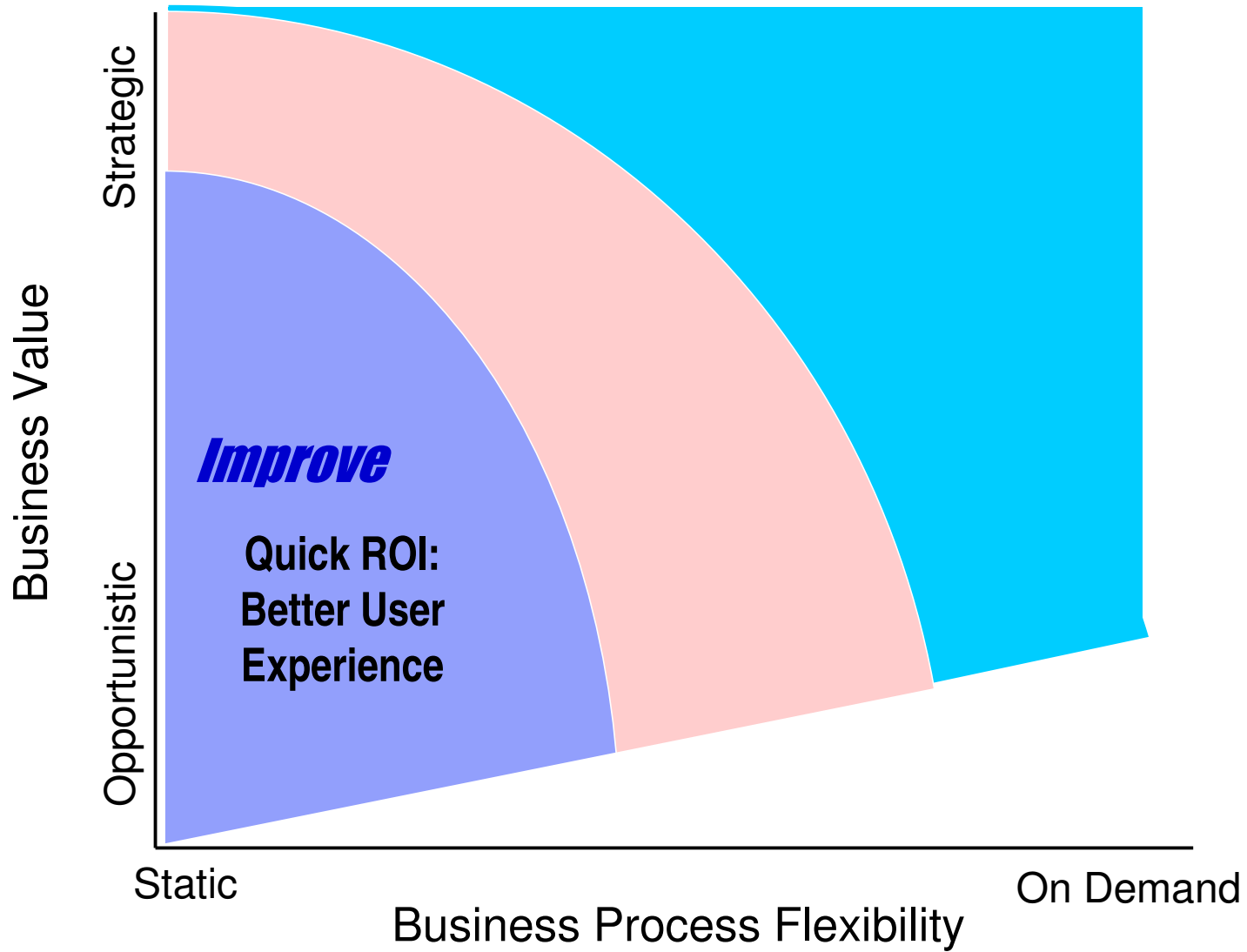
Position on diagram:  
Point of interaction  
with a program





# Three Styles of Modernization

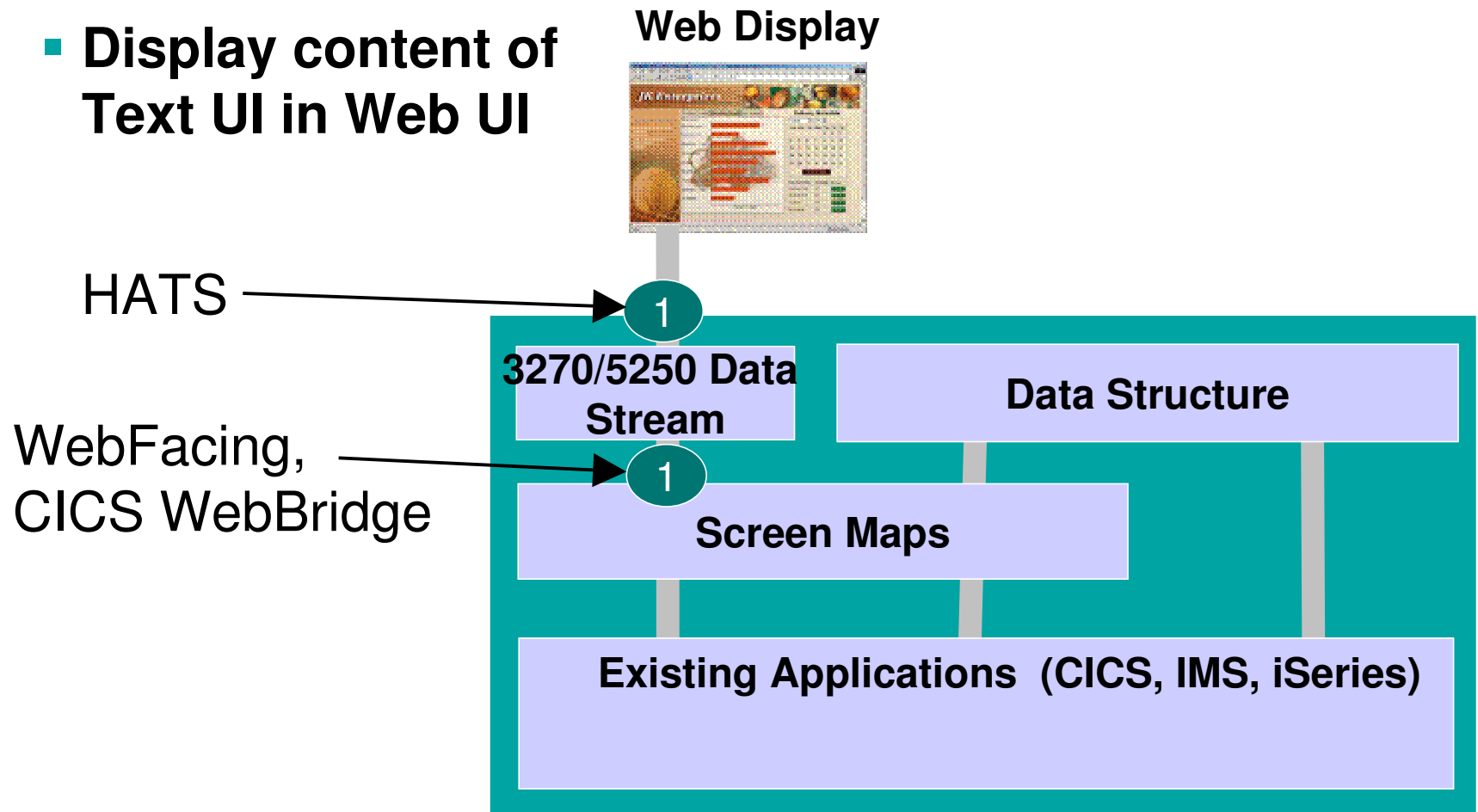
Develop



Develop

# Style 1: Improve the end-user experience

- Display content of Text UI in Web UI



# Host Access Transformation Server (HATS)

- A Web-to-host HTML emulator, with ...
- rules-based transformation engine, that...
- converts green screens to graphical user interfaces
- improves ease-of-use of host applications.

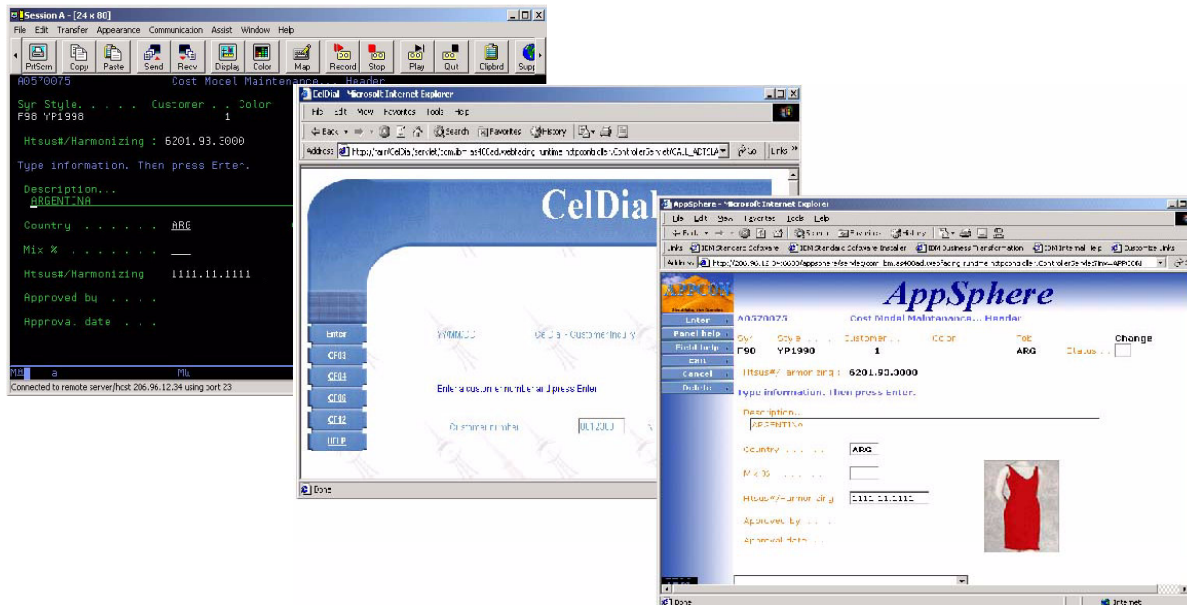


**Benefit: Easily extend existing applications to the web**



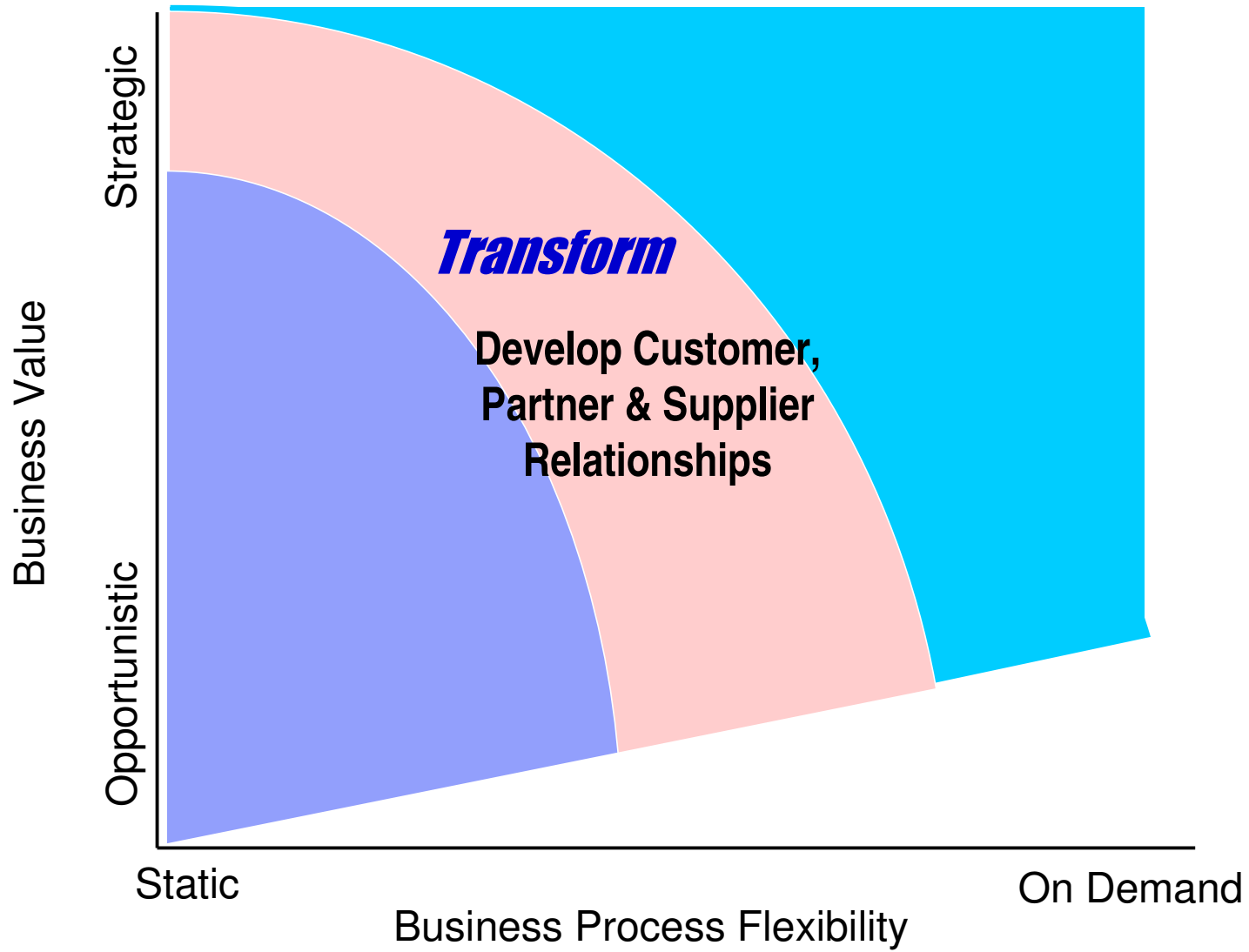
## The IBM WebFacing Tool

- Part of WebSphere Development Studio for iSeries
- Supports 5250 and web interfaces
- Convert RPG/5250 applications to GUI
- End-users access applications via browser



# Three Styles of Modernization

Develop

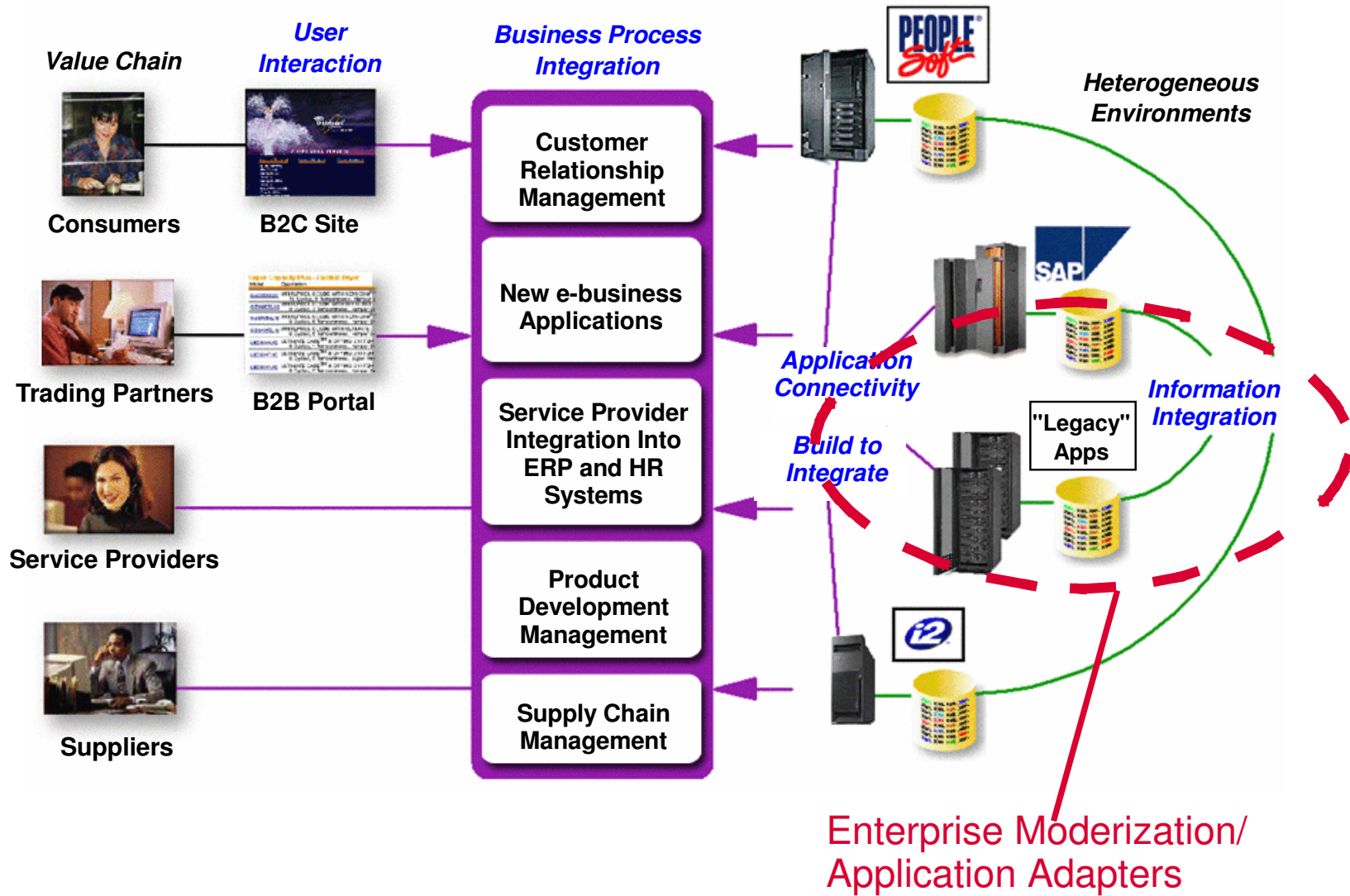


Devices

Network

Data

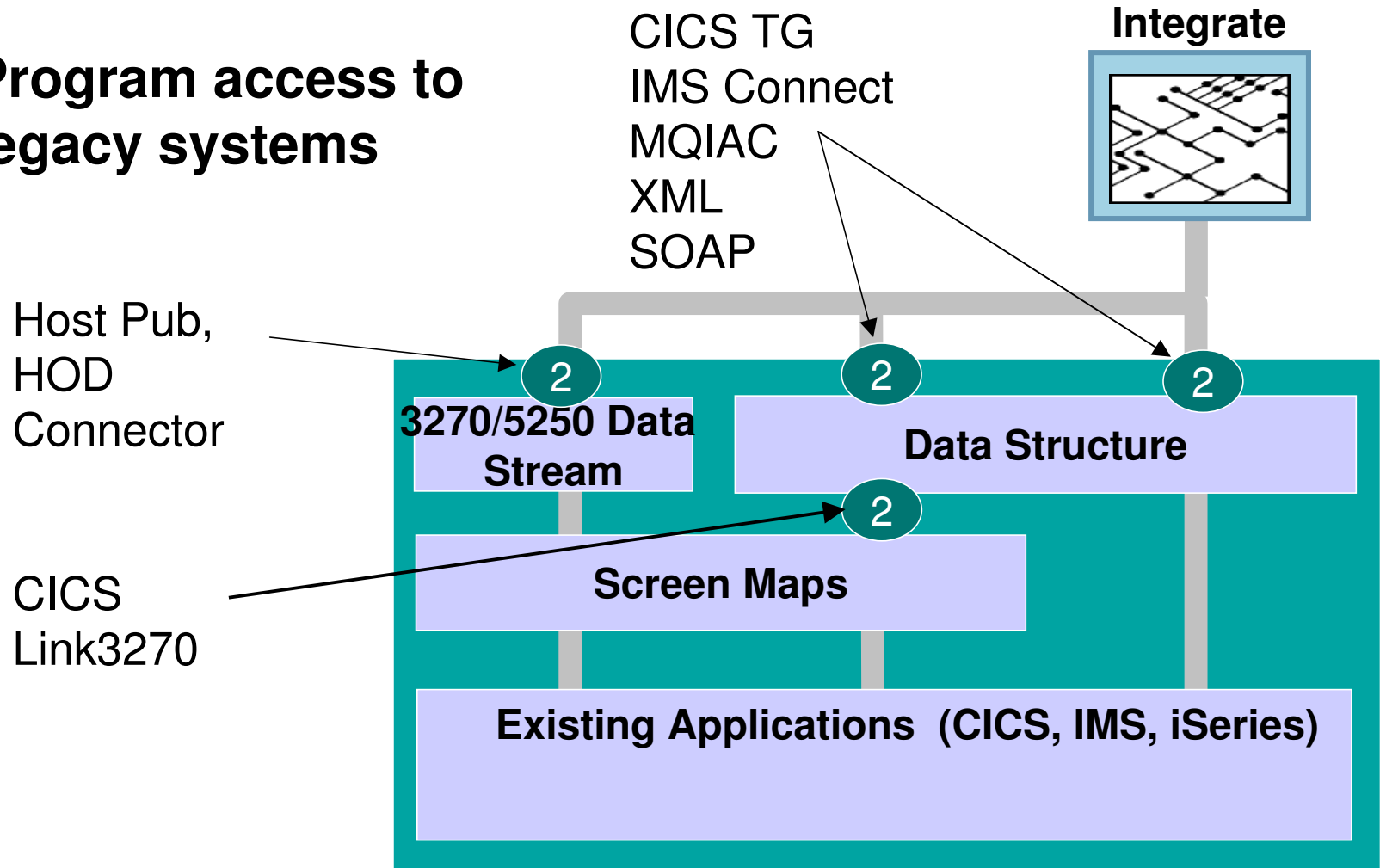
Develop



Develop

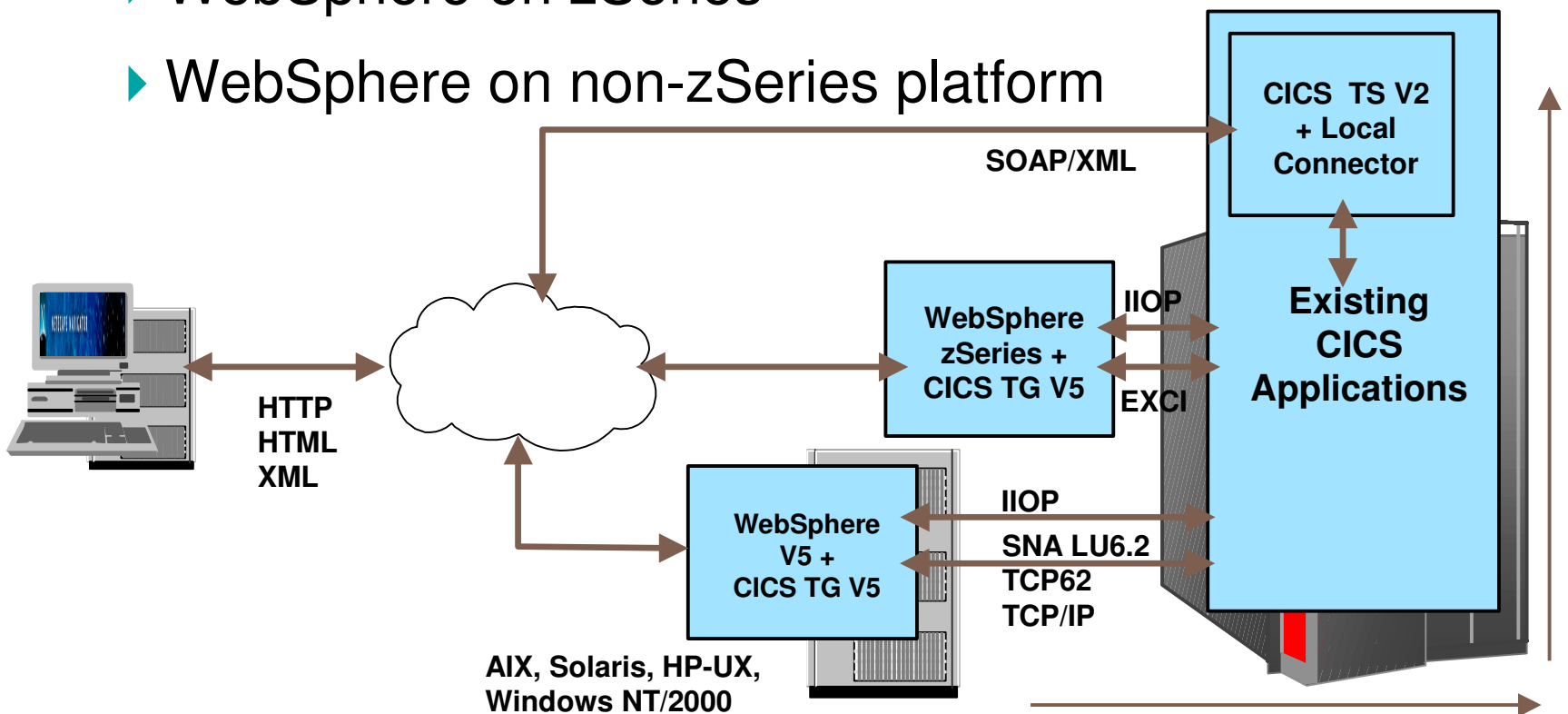
# Style 2: Transform the business process

- Program access to legacy systems



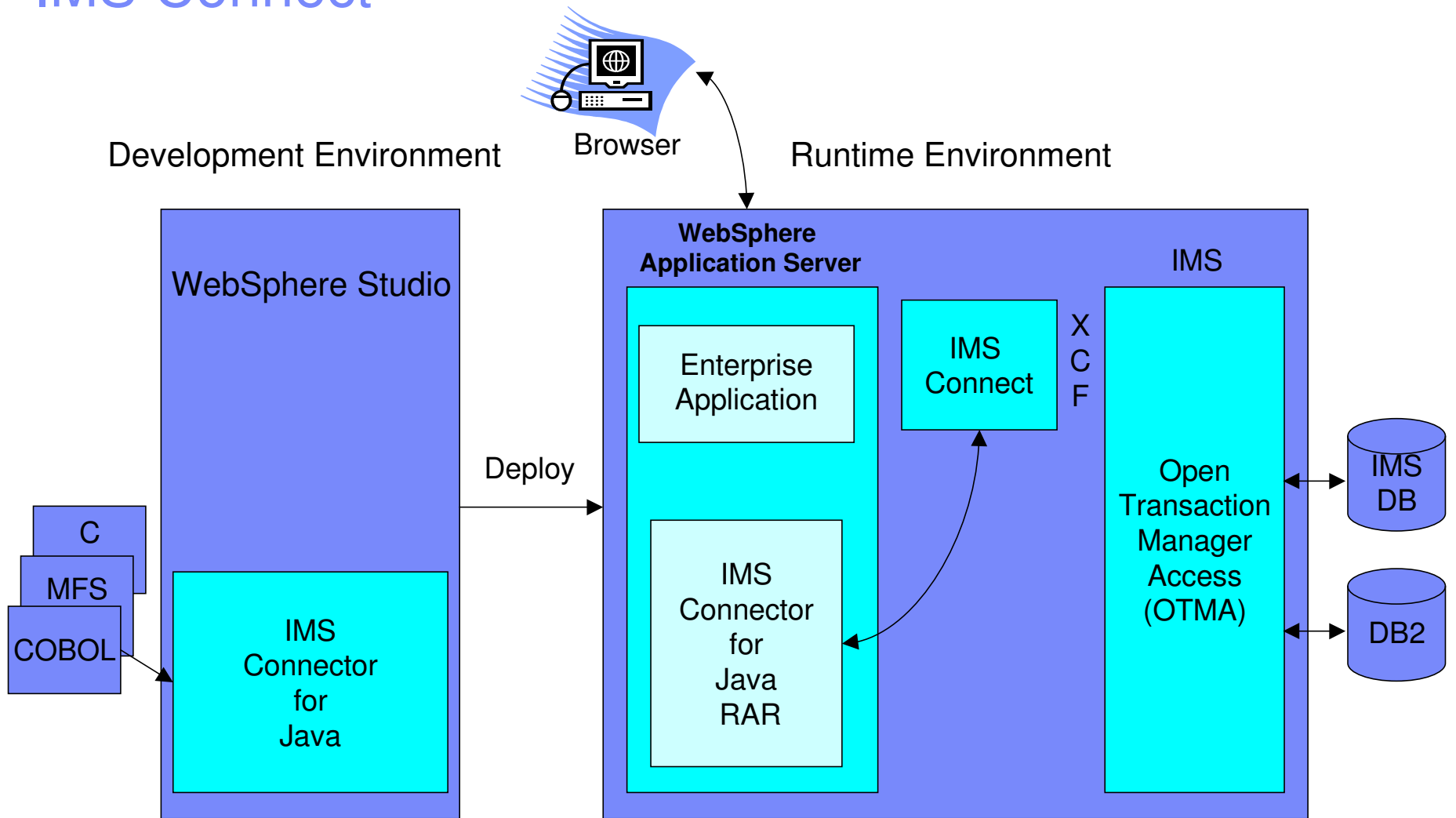
## Ways to Access Existing CICS Applications

- SOAP requests over HTTP or MQ messages
- CICS Transaction Gateway
  - ▶ WebSphere on zSeries
  - ▶ WebSphere on non-zSeries platform





# IMS Connect



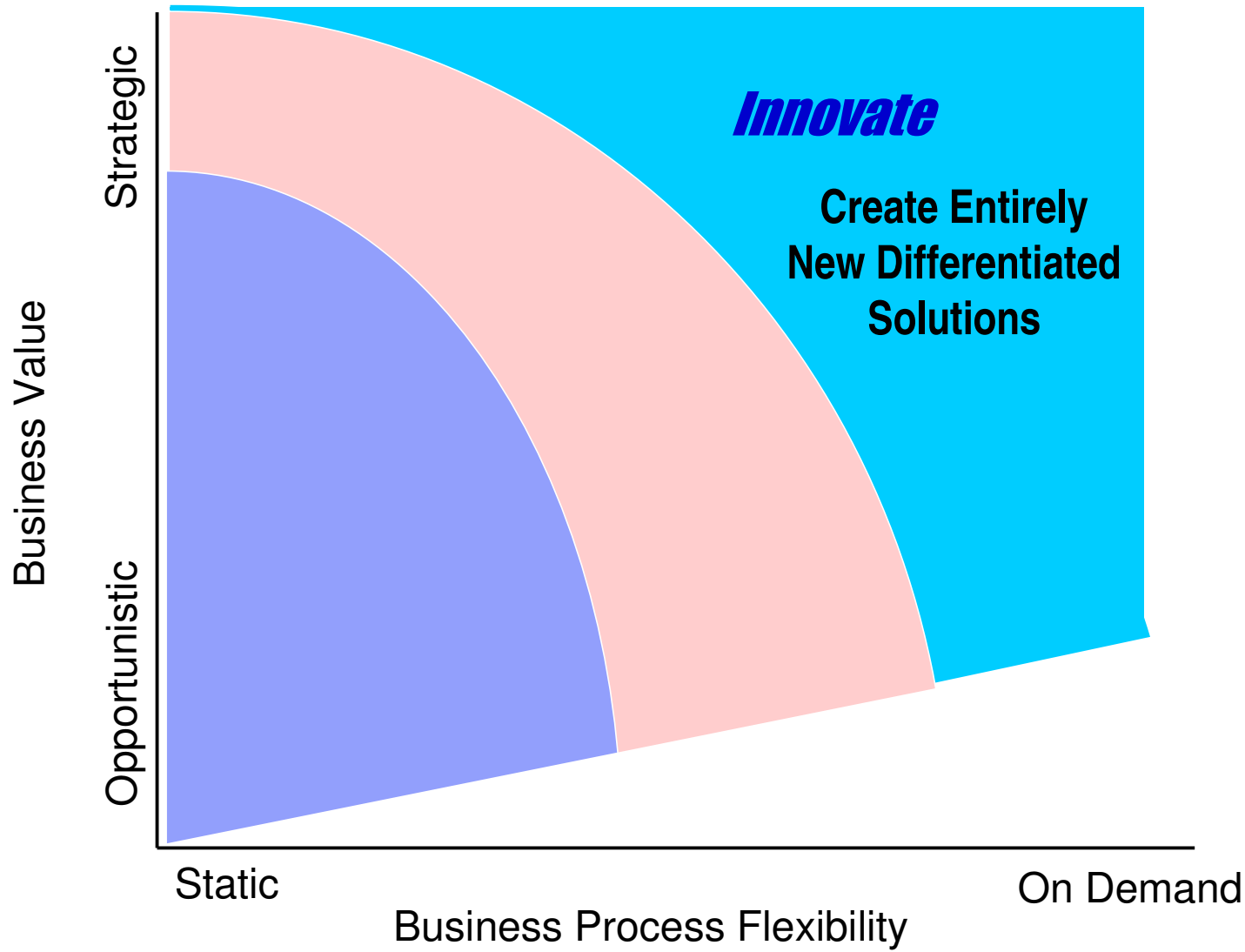
# MQSeries Integrator Agent for CICS Transaction Server

- **Enable middle-tier applications to access CICS, IMS, and others**
  - ▶ Adapter flow is surfaced as a "Business Service"
  - ▶ multiple transactions or applications accessed with one request from the client
  - ▶ e.g., Check Account Balance, Add Sales Order
  
- **Two components**
  - ▶ MQSeries Integrator Agent for CICS Adapter Builder
    - Define, model, and build adapters for application integration
  - ▶ MQSeries Integrator Agent for CICS Server Run Time
    - Execute adapters for application integration



# Three Styles of Modernization

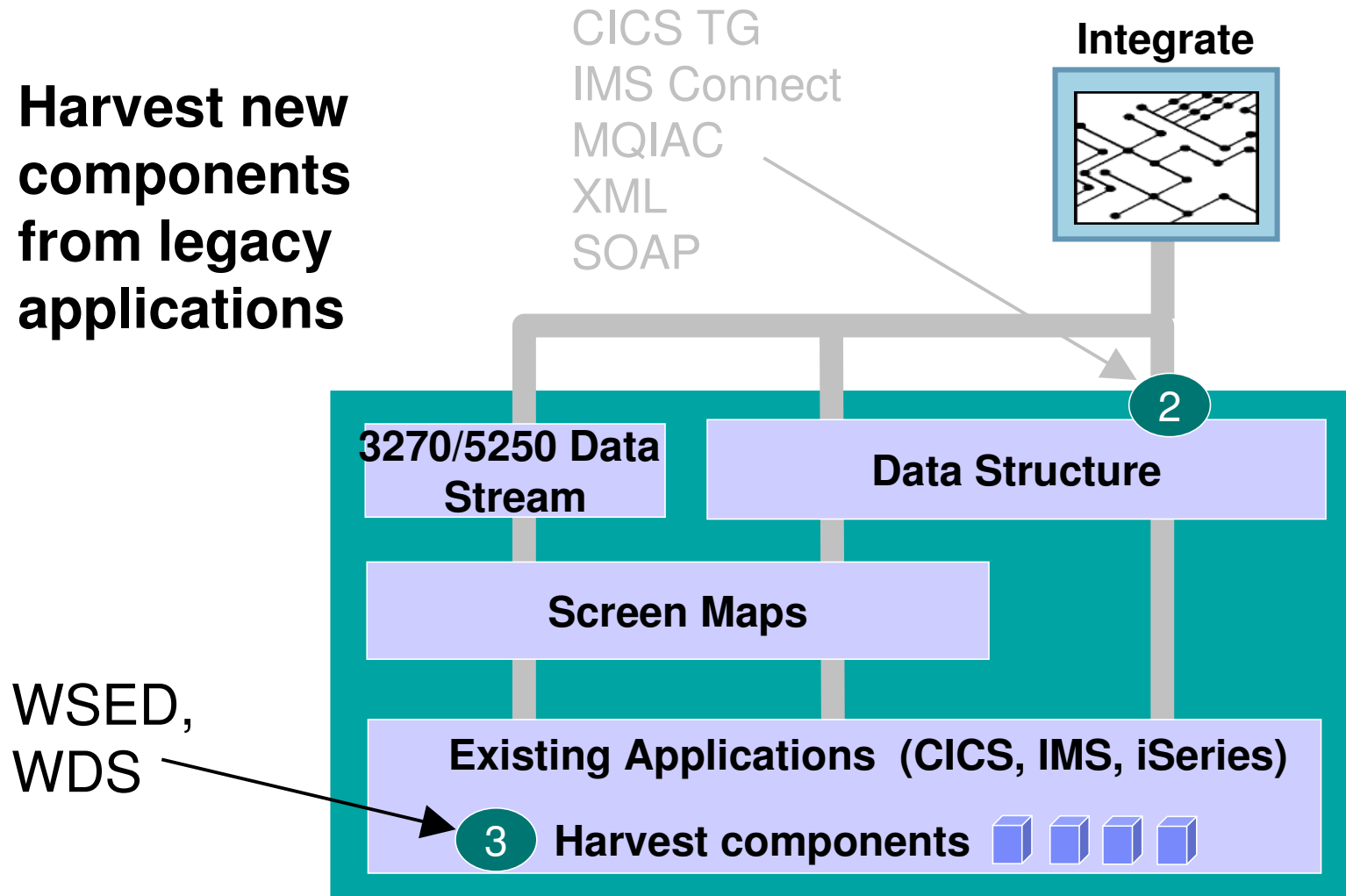
Develop



Develop

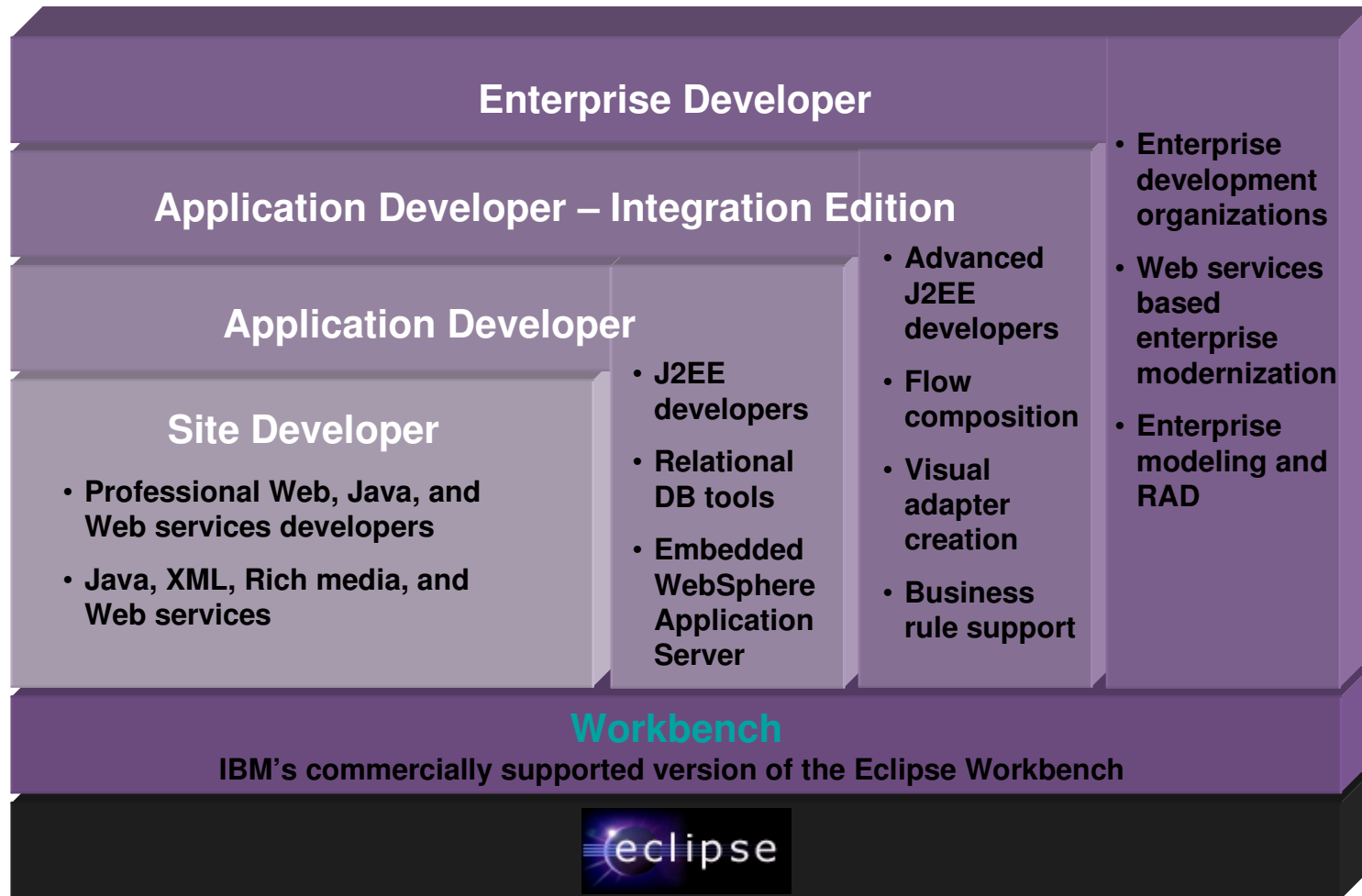
# Style 3: Innovate new business components

- Harvest new components from legacy applications



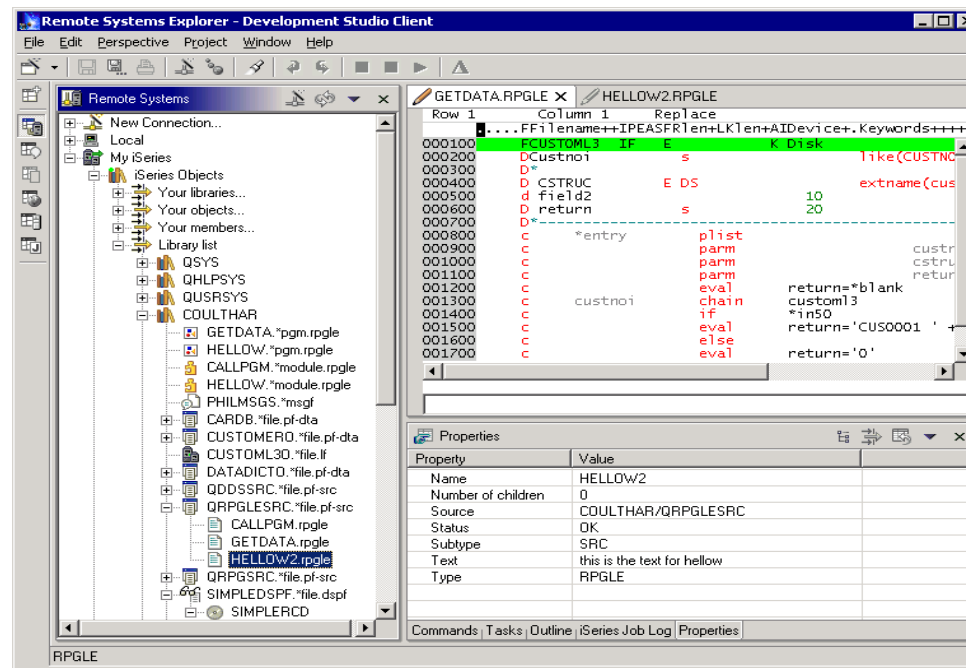
Develop

# The WebSphere Studio family



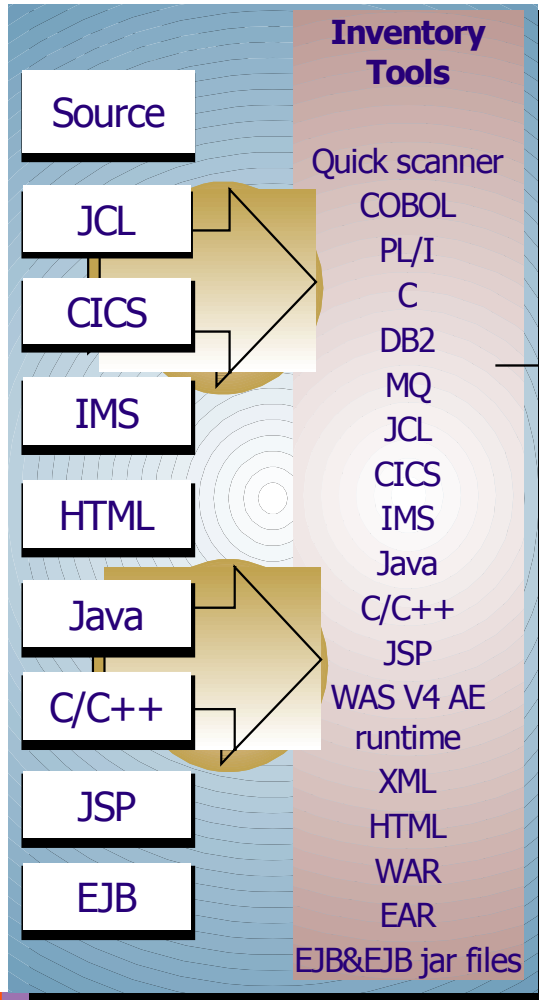
# WebSphere Development Studio for iSeries

- For existing and new AS/400 web development
- “Wrapper” RPG applications as web service
- Modernize 5250 applications via WebFacing Tool



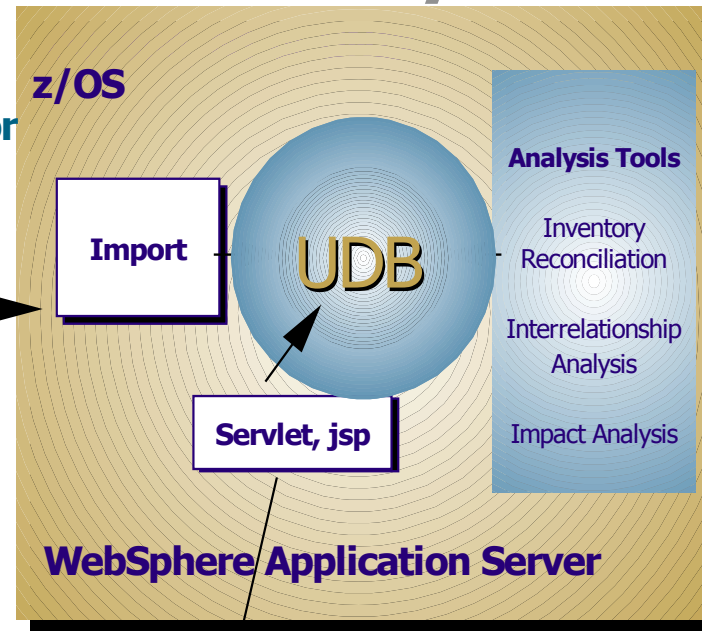
# WSAA Overview

## Data Collection



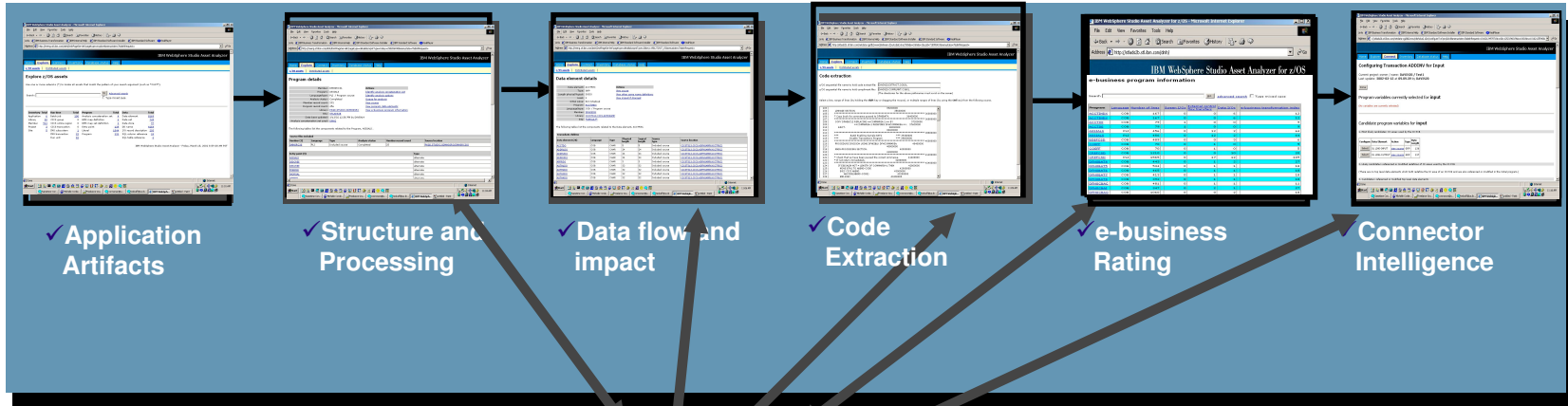
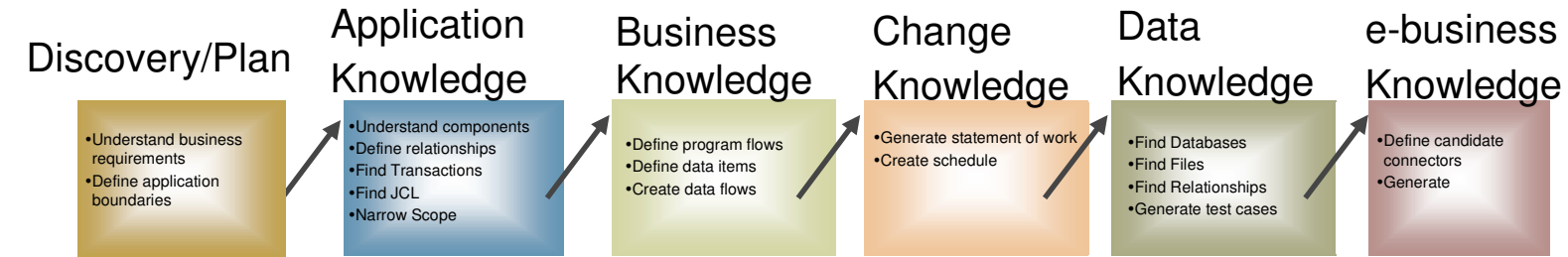
Text file for data transport

## Data Analysis

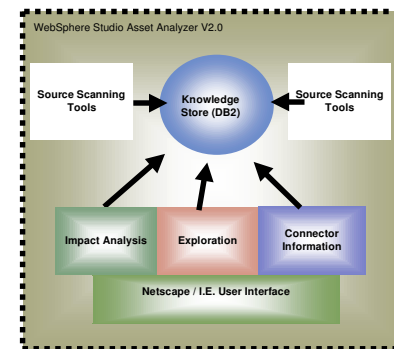
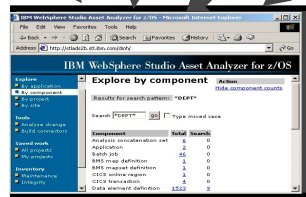


Discover

# Tools

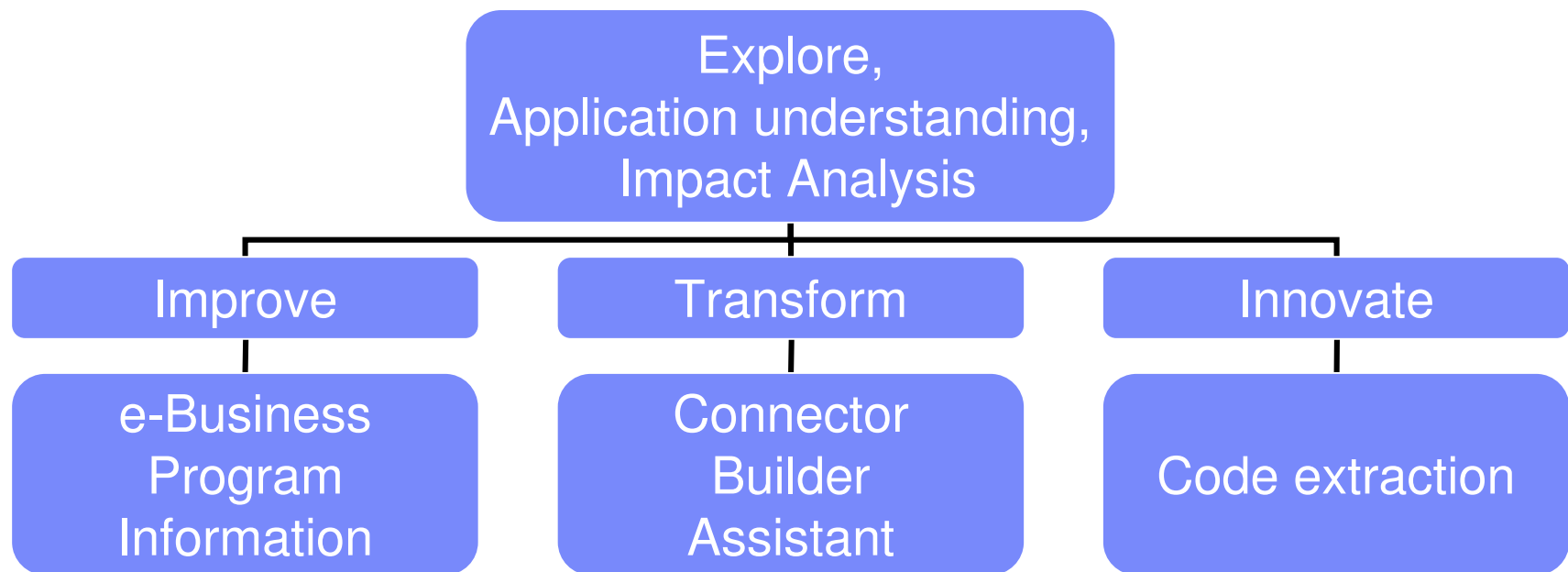


Providing End-to-End Asset Analysis for traditional, enterprise and e-business support





# Using WSAA for Enterprise Modernization



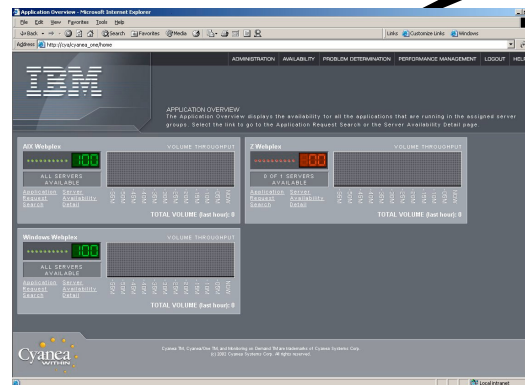
- Improve: How many screen I/O's
- Transform: Package COBOL call info for Java programmer
- Innovate: Harvest code from existing programs



Deploy

# WebSphere Studio Application Monitor

- Trouble-shooting
- Performance-monitoring
- Performance analysis



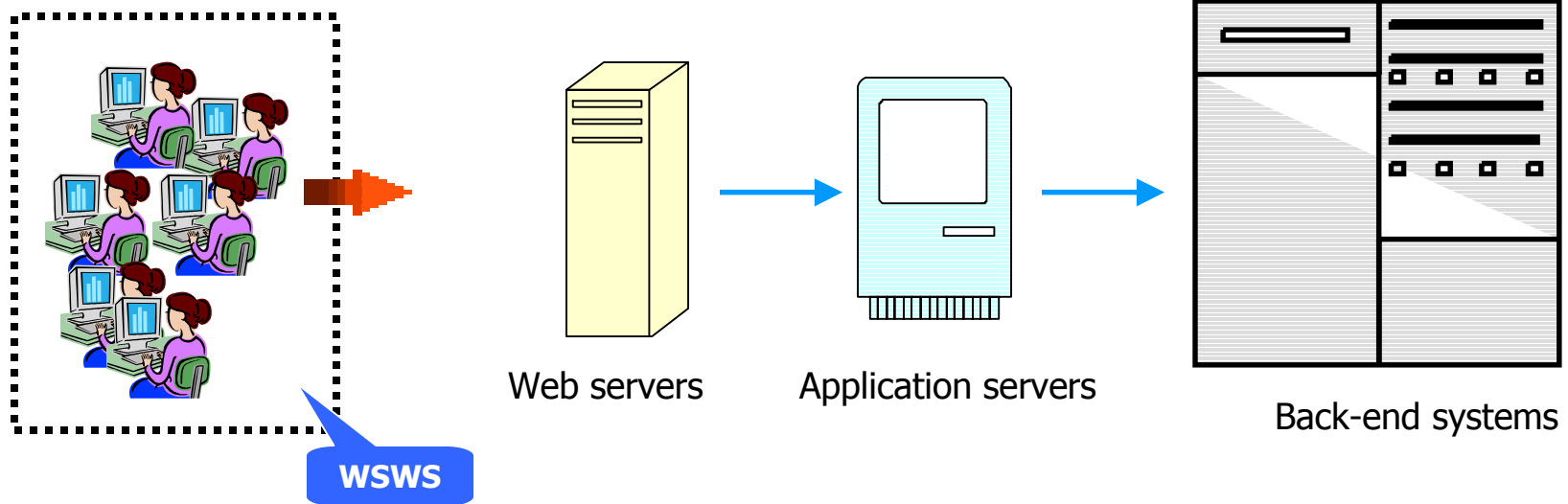
Benefit: Resolve performance problems with J2EE applications



Deploy

# WebSphere Studio Workload Simulator

- Simulate a large number of web users



## Benefits:

- Validate support for production loads
- Does not pre-req the WAS

**Benefit: Test drive Web applications before you deploy**

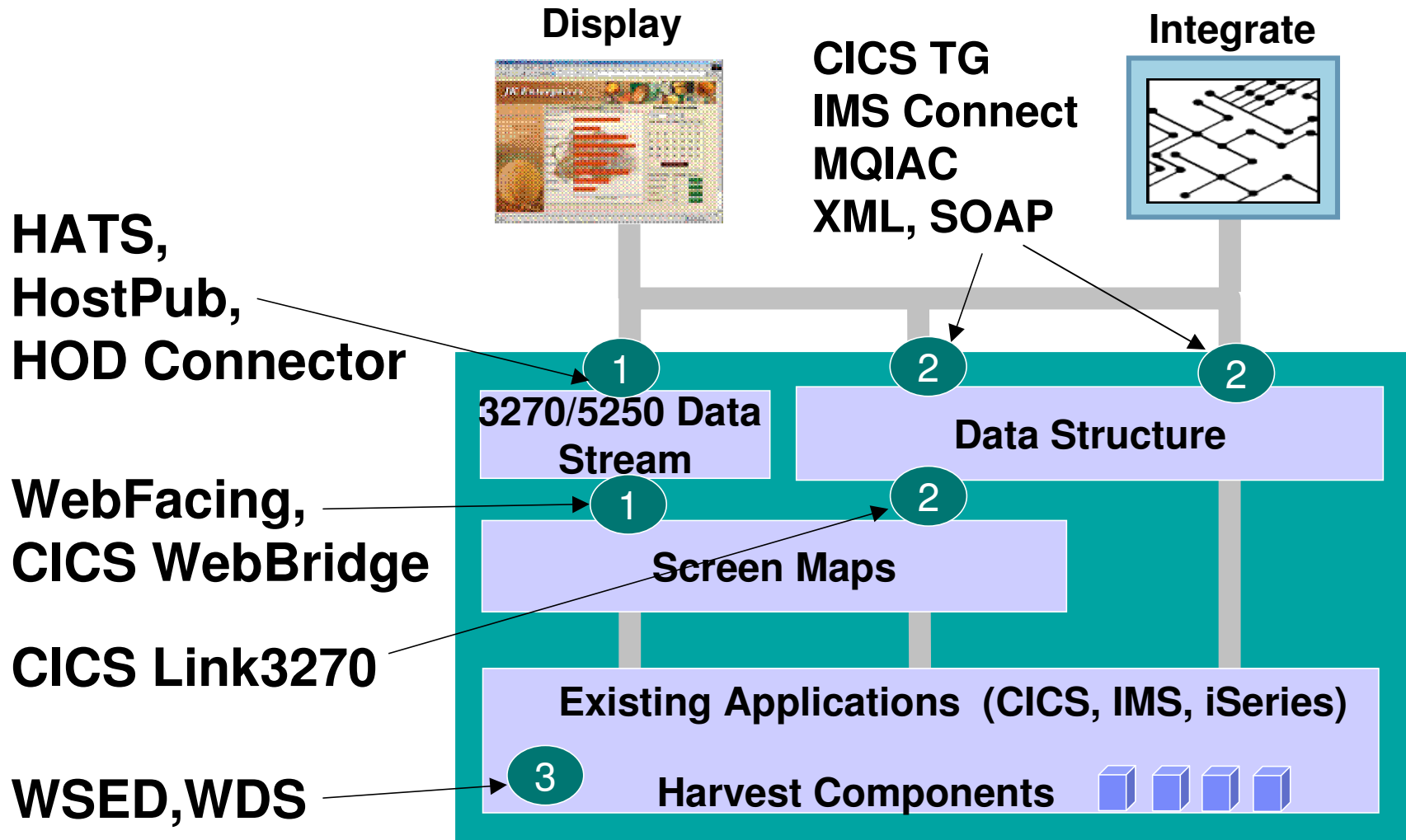


## Enterprise S/390 Development Tools

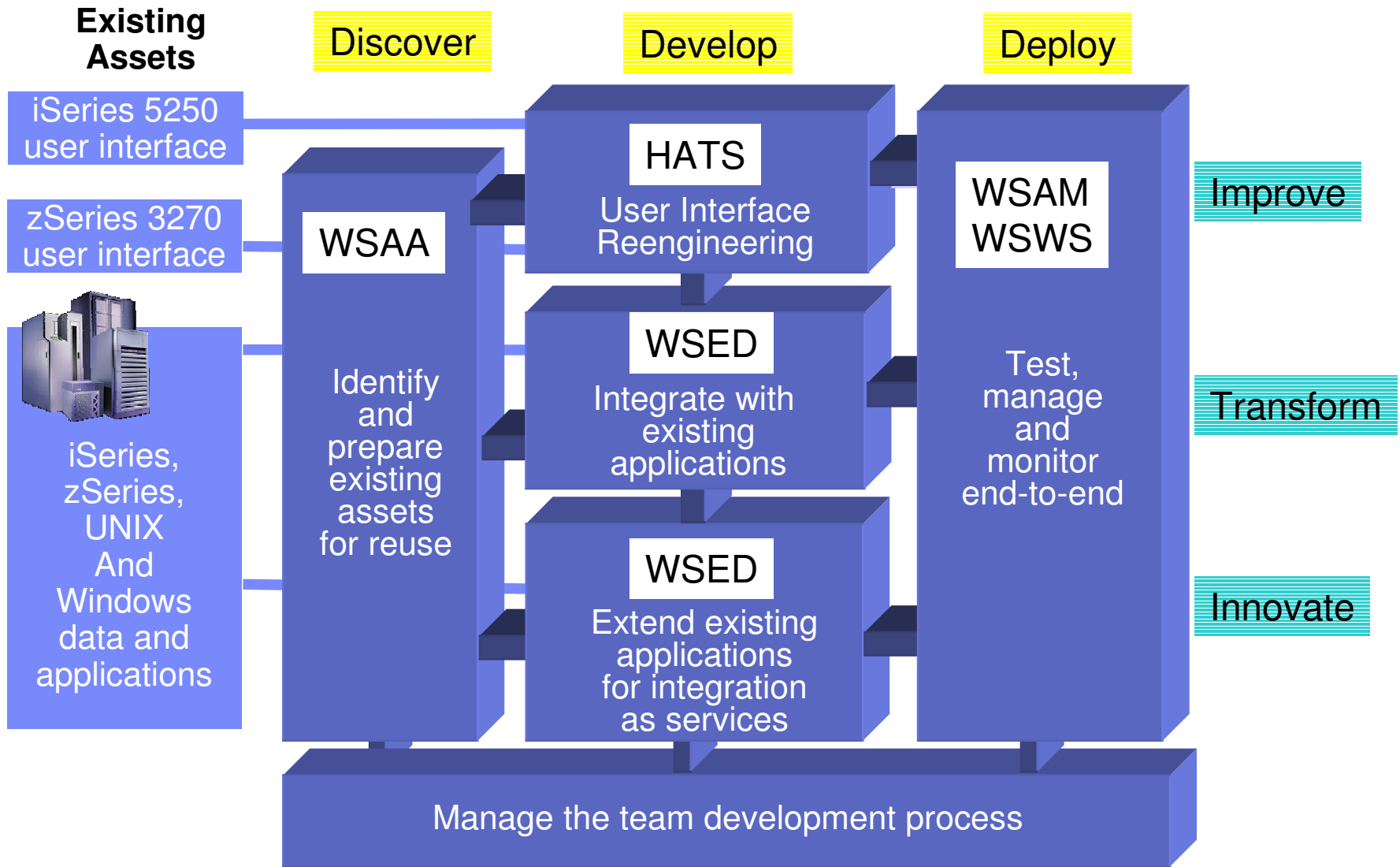
- **Application Monitor**
  - ▶ real-time bottleneck analysis
- **Debug Tool**
  - ▶ source-level diagnostics
- **Fault Analyzer**
  - ▶ application failure determination and resolution assistance
- **File Manager**
  - ▶ Manipulates test and production data across multiple file formats
- **Workload Simulator**
  - ▶ Web application load testing



# Points of Enterprise Modernization Today



# IBM's Enterprise Modernization Solution



# Three Styles of Modernization

