



Advanced Technical Support

zSeries COBOL Application Development and CICS Update

***IBM Problem Determination Tools:
Fault, Edit, Debug, Test, and Tuning***



***Dan Brown
IBM z Systems AD/CICS Tools
browndan@us.ibm.com***

Agenda

File Manager for z/OS

- Data management tool supporting key file structures like VSAM, DB2, and IMS

Fault Analyzer for z/OS

- Helps you rapidly pinpoint cause of failed application (abends)

Debug Tool Utilities & Advanced Functions for z/OS

- Source code debugging to improve development productivity

Workload Simulator for z/OS and OS/390

- Regression and Load testing of interactive z/OS applications

Application Performance Analyzer

- Monitor performance at the application level

PD Tools

IBM 2006 OFFERINGS

IMS V9
DB2 V8
CICS TSV3.1



IBM File Manager for z/OS

Use it to:

- Work with data in files, DB2 tables, and IMS databases
- Browse and edit data directly
- Easily copy, modify, reformat, and compare data

Key Features:

- Advanced data **Edit** and **Browse** **No limit to file size!**
 - Uses familiar ISPF edit commands
 - Powerful data formatting and selection capabilities
- A robust set of **utilities to create, copy, find, compare, and modify data**
- Work with data in friendly formats
 - Use a copybook or user-defined “template” to format records

IBM Fault Analyzer for z/OS

Use it to:

- Understand why an application abended
- Get information you need to diagnose and fix a problem

Key Features:

- **Automatic real-time capture** of diagnostic information
- **Automatic analysis and reporting** of application abends
 - FA can pinpoint an abend to the program and source statement
- **Interactive, point-and-shoot navigation** of abend information
 - Quickly navigate to information you need, even in large, complex applications

IBM Debug Tool and Advanced Functions for z/OS

Use it to:

- Interactively debug an application program while it runs
 - Step through source statements, set “breakpoints” and run, monitor and change program variables
- Modernize COBOL programs written for older compilers

Key Features:

- Debug **COBOL**, **PLI**, **C**, **C++**, and **Assembler** programs
- Support for **batch**, **CICS**, **IMS**, **DB2**, and **DB2 stored procedure** programs
- Set simple or conditional breakpoints; or run a script at a breakpoint
- Gives you the ability to **trap and repair abends**
- Intuitive GUI interface using WDDZ
- COBOL Conversion Utility

IBM Workload Simulator for z/OS

Use it to:

- Automatically simulate online user(s) on the system
- Perform automated functional testing
- Perform regression testing of online applications
- Perform Load and Performance testing
- Automated large volume data entry script

Key Features:

- Automatically capture test scripts from a live session
- Powerful scripting language
- Easy-to-use ISPF interface
- Organizes your testing scripts, projects, and results

IBM Rational Function Tester Extension for z/OS

Use it to:

- Automatically simulate online user(s) on the system
- Drive simulations from a workstation
- Perform regression testing of online applications

Key Features:

- An extension to Rational Functional Tester
- Automatically capture test scripts from a live session
- Powerful scripting language
- GUI interface
- Organizes your testing scripts and results

IBM Rational Performance Tester for z/OS

Use it to:

- To validate system performance
- To determine maximum system capacity
- To identify and resolve performance problems



Key Features:

- A highly scalable architecture, allowing larger tests to be run with less hardware
- A graphical schedule editor for workload and user population modeling
- Automated test creation via recording
- Test-time reporting on response time and throughput
- A graphical test editor, easily usable by novices and experts alike

File Export for z/OS

Use it to:

- Copy selected data from a related collection of data stores
- Migrate data to new environments
- Define application relationships between data in multiple files and databases

Key Features:

- flexible data selection and transformation rules
- Support for DB2, IMS, and MVS data in one product
- SQL-like definition of application relationships

Application Performance Analyzer

Use it to:

- Monitor an application while it is running
- Pinpoint the cause(s) of bad application performance, right down to the line of source code
- Capture and report application system resource consumption, (ie. file access, DB2 SQL, CPU cycles, etc.)

Key Features:

- Intuitive online ISPF interface
- Monitor application programs at the source level
- Support for batch, CICS, DB2, IMS, MQ

Application Time Facility (aka TicToc)

Use it to:

- Shift the time zone for an online region so users will see their local time
- Re-execute a failed job at the “right” time
- Test applications at end-of-period or sensitive times

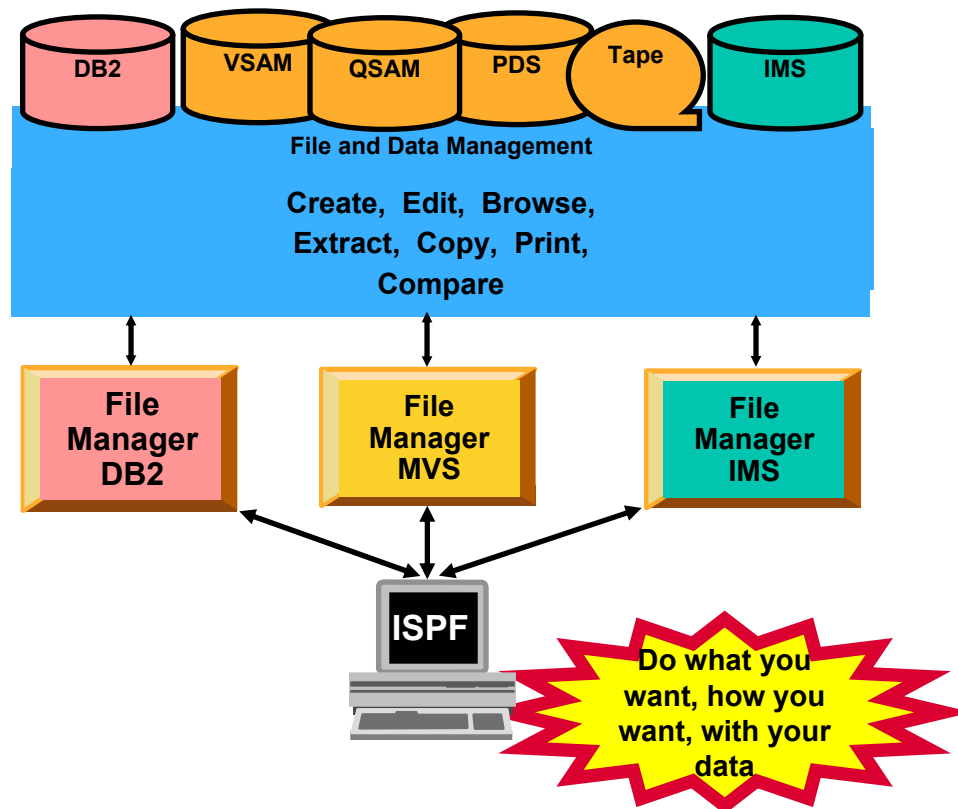
Key Features:

- a simple ISPF interface where you can easily specify jobs or groups to receive simulated dates
- Support for batch, CICS, LE, IMS, IDMS, IDEAL, DB2, and NATURAL
- handles a complete set of date formats and services

IBM File Manager

File Manager Functional Overview

File Manager is delivered as one product with three components ---- **MVS, DB2 and IMS**



File Manager Features:

- Work with data in files, DB2 tables and IMS databases
- ISPF-like Panels
- Full Function Browse And Edit
- Multiple Modes Of Edit And Browse
 - Table
 - Single
- Flexible Selection Criteria
- Copy
- File Reformatting
- Global Search And Updated Capability
- Print
- Compare
- No file limit size!

The most-used functions in File Manager

■ **EDIT and BROWSE**

- Directly and interactively work with data in a file or database

■ **COPY**

- Easily select records / rows to be copied
- *Automatically* reformat record layouts during copy
- Powerful capabilities to modify data during copy

■ **COPYBOOK MAP**

The most-used functions

- **Global FIND / CHANGE**

- Search for / change data across members in a PDS(E) or in a file

- **COMPARE**

- Compare records/fields between files
- Select fields to be compared
- Map fields between files with different layouts

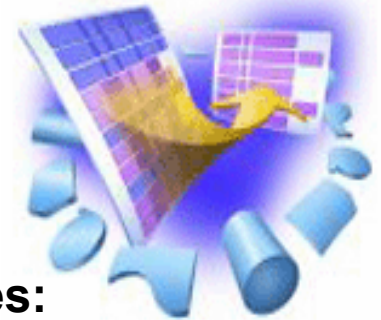
The most-used functions

- **PRINT**
 - Select records and fields
 - format a report
- **SQL Prototyping (DB2)**
 - Powerful facilities to help code and test SQL statements
- **EXPORT / IMPORT (DB2)**
- **UNLOAD / LOAD (IMS)**

File Manager EDIT and BROWSE:

- **Uses familiar ISPF-edit commands**
 - If you know how to use ISPF Edit, then FM Edit will be familiar
- **Edit a single record to an entire file/database**
 - Edit files or IMS databases of unlimited size
 - Customers tell us that FM lets them edit larger files than competing software!

File Manager Summary



- **One product, 3 environments:**
MVS, DB2, IMS
- **Modes Of Operation**
 - Interactive
 - Batch
- **Supported Data Types**
 - QSAM / PDS(E)
 - VSAM / IAM
 - DB2
 - IMS
 - Physical Disk / Tape Records
- **File Manager Features:**
 - Familiar ISPF-like Panels
 - Powerful Browse And Edit
 - Customizable Data Display and Formatting
 - Flexible Record and Field Selection Criteria
 - Copy
 - File / Database Update
 - File / Database Reformatting
 - Global Search And Updated Capability
 - Print
 - Compare
 - Export / Import

IBM Fault Analyzer

What is Fault Analyzer ?

- **A tool that helps you determine the cause of an application abend**
 - so you can more quickly identify and resolve the problem

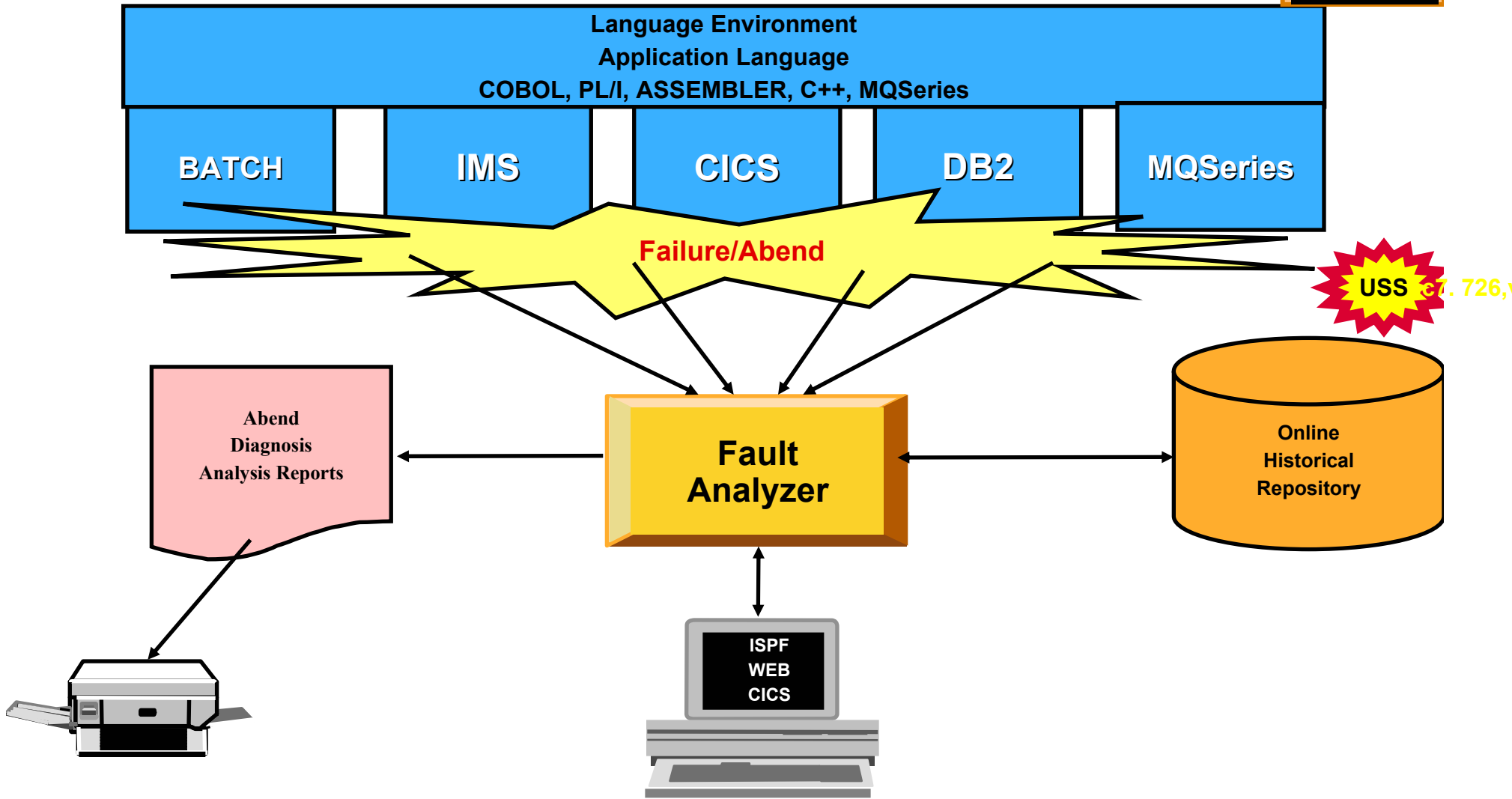
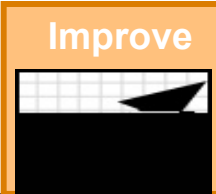
- **It provides information about an application when it has abended, to help you assess:**
 - What happened, and why?
 - What program?
 - What line of source code?
 - What source variables were involved?

What Functions does Fault Analyzer have ?

- **Real-Time Analysis**
 - Automatic analysis and report generation
 - Automatic captures of detailed application data for later interactive analysis

- **Reanalysis**
 - Point-and-shoot navigation of an abend
 - Apply program source data after an abend
without re-creating the abend

Fault Analyzer - *Helps you rapidly pinpoint why and where an enterprise application failed - and offers suggestions on how to resolve*



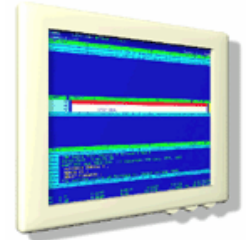
Fault Analyzer Summary



- **Single Fault Analysis Product For All Environments**
- **Consistent Across Languages**
 - COBOL, C, C++, PL/I, Assembler
- **Environments Supported**
 - CICS, TSO, JES/Batch, IMS, DB2, Unix System Services, MQSeries, WAS/z and Java
- **Modes Of Operation**
 - Real Time Analysis
 - Batch Dump Re-analysis
 - Interactive Dump Re-analysis
- **Fault Analyzer Features:**
 - Analysis At Application Level, translation of low-level “Dump” information
 - Interactive Point-and-Shoot Navigation
 - Real-Time Information Capture
 - Expands Abend Code And Message Descriptions
 - No Recompile Of Applications
 - No JCL Changes
 - Interface to File Manager
 - Integrated 64-bit DB2 version 8 support
- **Interfaces**
 - ISPF
 - Web browser
 - CICS

IBM Debug Tool Utilities and Advanced Functions

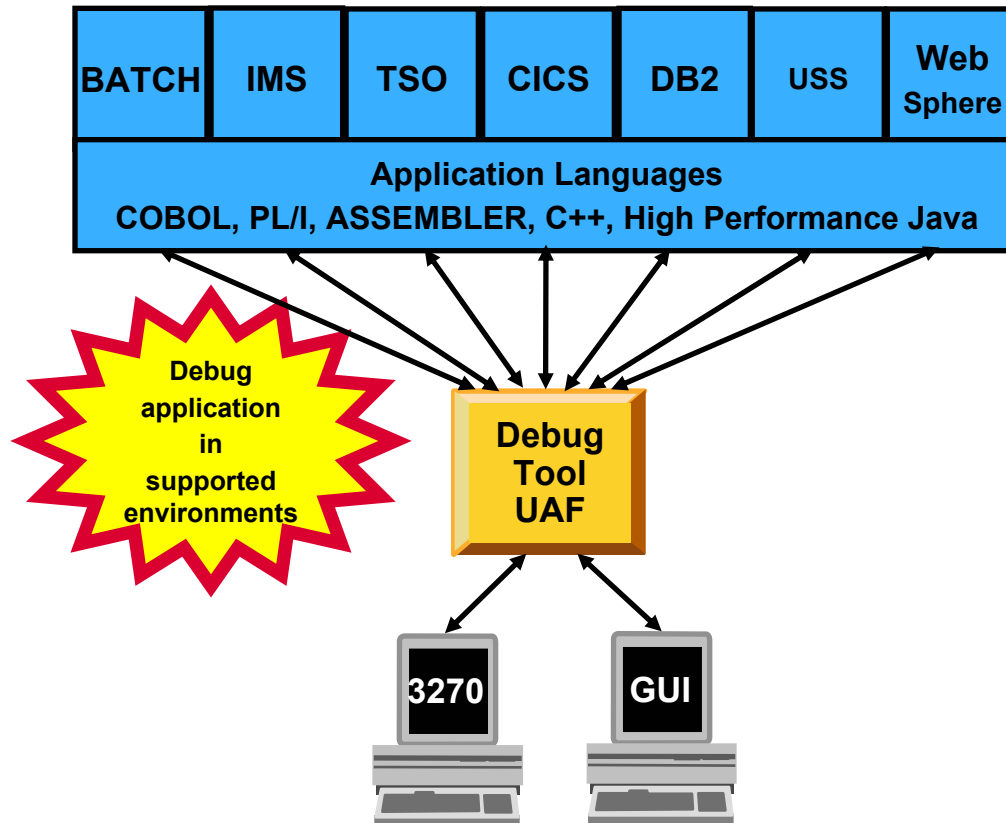
What is Debug Tool Utilities and Advanced Functions ?



- **A tool that helps you test programs, and monitor and control the execution of programs**
- **An interactive, source level debugger**
- **A set of utilities:**
 - *Load Module Analyzer*
 - *COBOL Modernization Utility*
 - *Code Coverage Utility*

Debug Tool UAF Functional Overview

Provides debugging of enterprise applications



■ Features:

- Playback support
- Automonitor support for COBOL and PL/I programs
- An interface to the Fault Analyzer tool
- A code coverage tool
- Support for identifying and converting OS/VS COBOL source programs to ANSI 85 standard COBOL
- Preparation and compile facilities for programs
- Commands to query, allocate, and free files

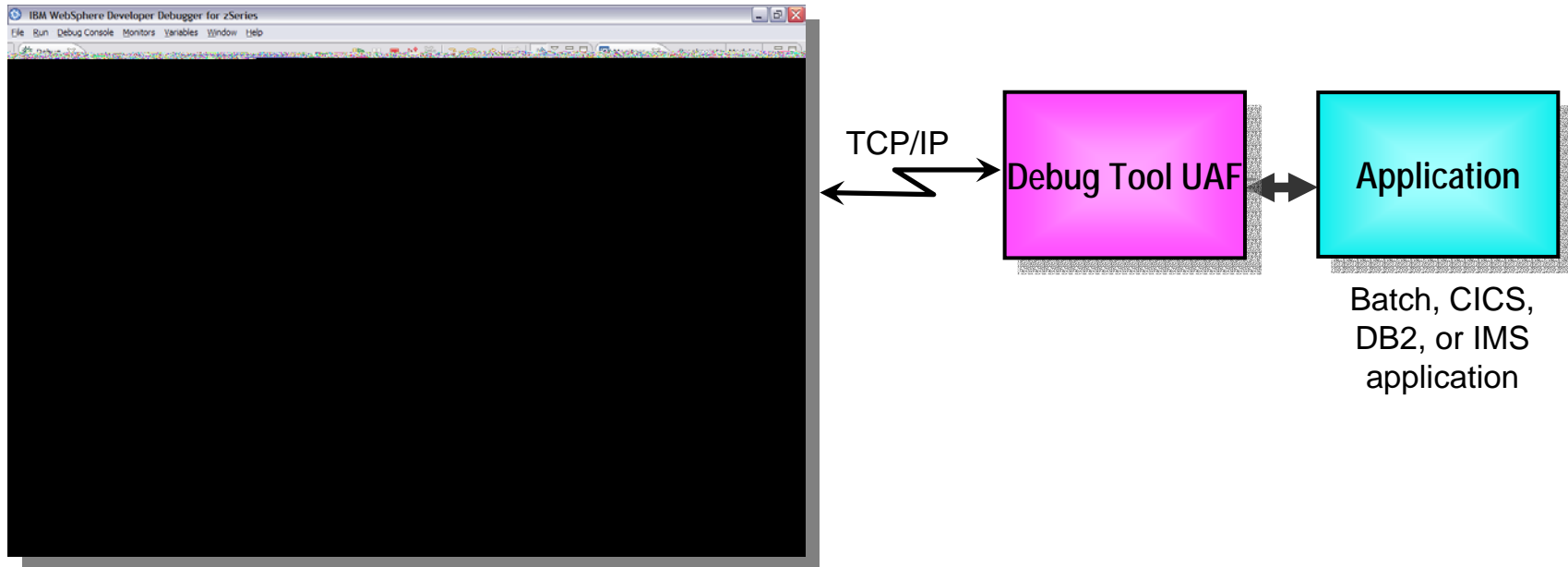
■ Consistent Across Languages

- COBOL, C, C++, PL/I, Assembler, HP Java

■ Environments Supported

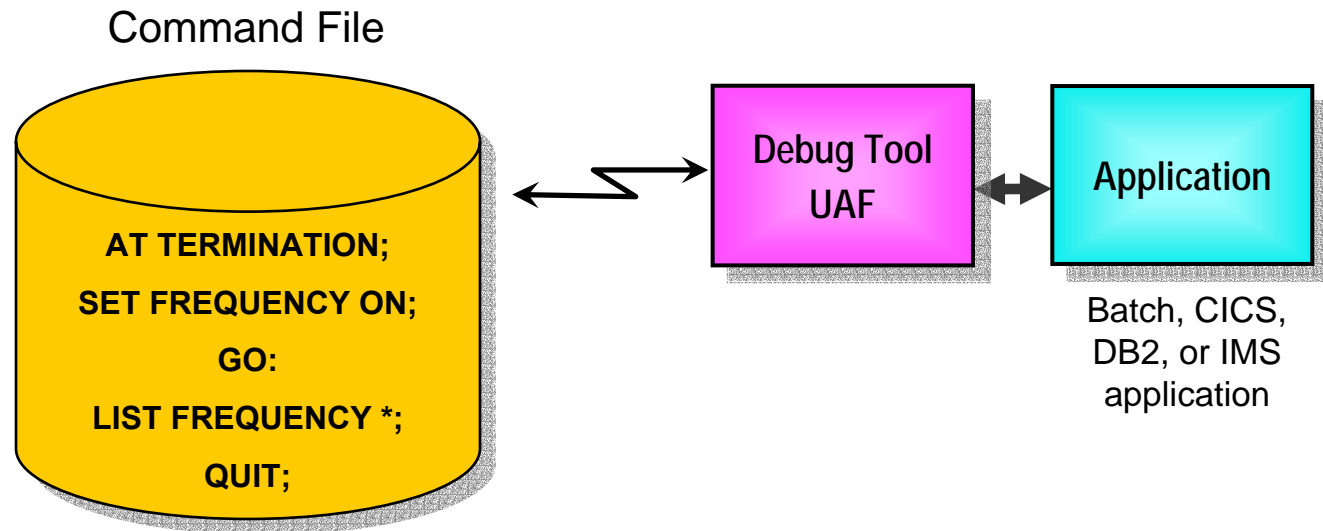
- CICS, TSO, JES/Batch, IMS Including IMS/TM, DB2 Including Stored Procedures
- Uses the GUI debug interface built into products such as:
 - *Websphere Developer for zSeries (WDz)*
 - *Websphere Dev. Debugger for zSeries (WDDz)*

How do I interface with Debug Tool UAF?



- **WebSphere Developer Debugger for zSeries (WDDz):**
 - the host application starts Debug Tool, which connects to a remote debugger on your workstation
 - Point and Click ease of use
 - Uses the GUI debug interface built into products such as:
 - **WebSphere Developer for zSeries (WDz)**

How do I interface with Debug Tool Utilities and Advanced Functions ?



■ Debug Tool “Batch” Command File mode

- Run an automatic script that controls program execution and message display
- For creation of:
 - Automated condition checking and message display
 - Regression Test cases
 - Production Runtime problem diagnosis

Debug Tool Utilities and Advanced Functions

```
COBOL  LOCATION: SAM1 initialization  
Command: >>> stop ■
```

STEP through the program
statement by statement

Enter

Debug Tool Utilities and Advanced Functions - Breakpoints

- **Debug Tool provides many types of breakpoints.**
- **For example:**
 - At any statement
 - At the change of any variable or storage area
 - When variable(s) reach a value or range
 - When a specific subroutine is called

Debug Tool Utilities and Advanced Functions provides powerful debugging features

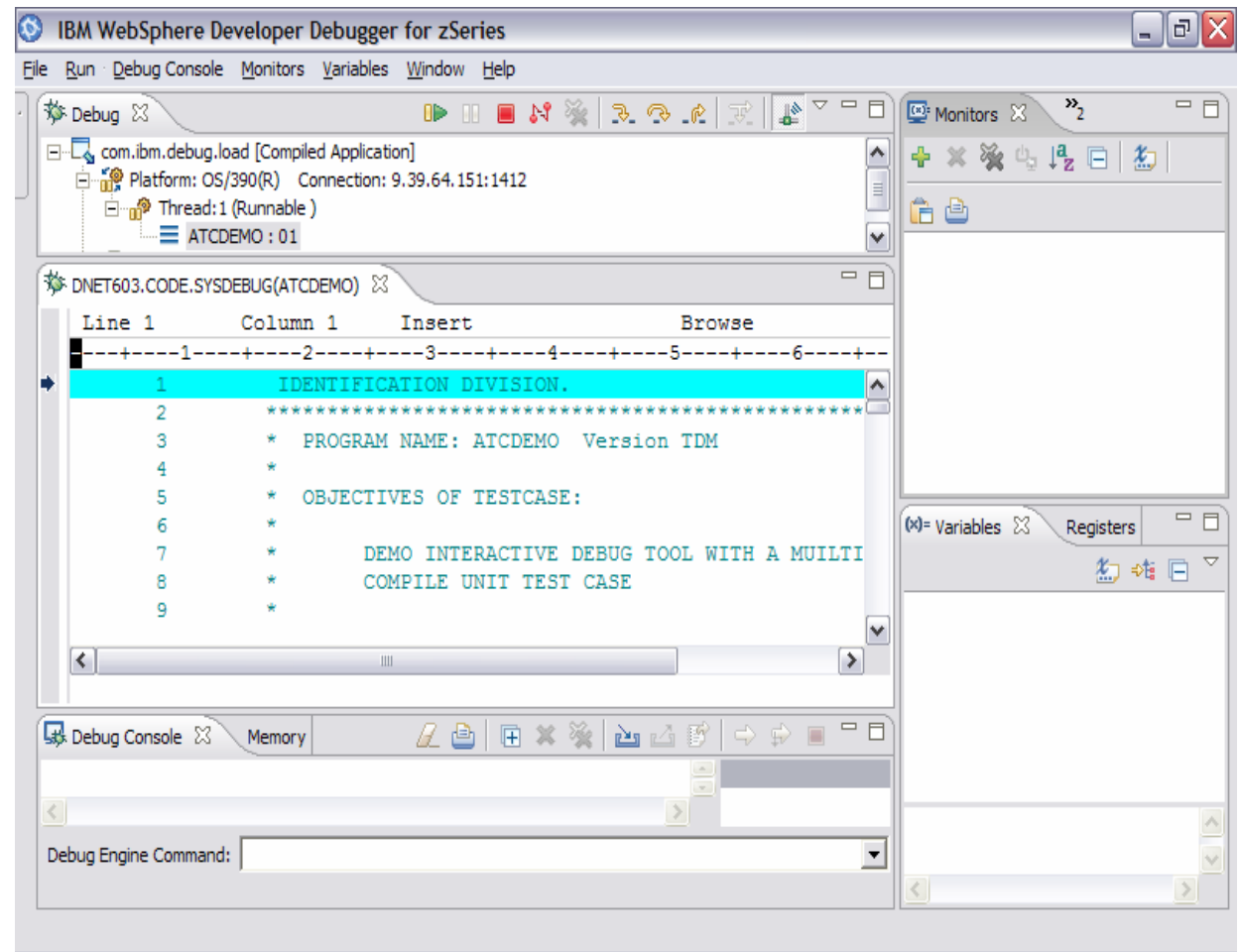
- **Step and run BACKWARD through recorded program statements**
 - See how a program executed
 - View variable values AS THEY WERE during execution
- **Make any breakpoint CONDITIONAL**
 - use COBOL, PLI, or C “IF” statements
- **Run a SCRIPT at any breakpoint**
 - Put programs statements and Debug Tool commands in the script
- **“Patch” your program – effectively add and remove statements on the fly**
- **Customize the user interface**
 - Define your own PF keys, window layouts, and commands

Websphere Developer Debugger for zSeries (WDDz):

- **Desktop Client GUI Interface built on the Eclipse Technology**
- **Common interface for all z/OS runtimes**
- **Provides a “point-and-click” interface as opposed to commands**
- **An “ease-of-use” interface to simplify use for the first time users of Debug Tool**
- **Facilitate the view/update of z/OS storage for assembler and C/C++ programs**

WebSphere Developer Debugger for zSeries:

- **DTUAF with WDDz:**
 - A workstation client software application that is started in a listen mode
 - When the z/OS application is started, the workstation IP address is passed via the LE “TEST” parameter



Present IBM COBOL Compilers and Support:

Product Name	PID(S)	Market Withdraw	Service Withdraw
MVS & VM			
OS/VS COBOL V1.2.4	5740-CB1 5740-LM1	Yes 06/30/1992 Yes 06/30/1992	Yes 06/30/1994 Yes 06/30/1994
VS COBOL II V1.4.0	5668-958 5688-022 5688-023	Yes 06/30/1997 Yes 06/30/1997 Yes 06/30/1997	Yes 03/31/2001 Yes 03/31/2001 Yes 03/31/2001
COBOL/370 1.1	5688-197	Yes 10/31/1995	Yes 09/31/1997
COBOL for MVS & VM Ver 1 Rel 2	5688-197	Yes 09/06/2000	Yes 12/31/2001
COBOL for OS/390 & VM Ver 2	5648-A25	Yes 12/31/2002 (MVS feature)	Yes 12/31/2004 (MVS only)
Enterprise COBOL for z/OS V3R1	5655-G53	Yes, 09/27/2002	Yes, 04/04/2004
Enterprise COBOL for z/OS V3R2	5655-G53	No	No
VSE			
DOS/VS COBOL V1.2.4	5746-CB1 5746-LM1	Yes 03/24/1997 Yes 03/24/1997	Yes 12/31/1999 Yes 12/31/1999
VS COBOL II V1.4.0	5668-958, 5688-022	Yes 06/30/1997	Yes 04/28/1998
COBOL for VSE/ESA	5686-068	No	No
LE for VSE/ESA V2R5	5690-VSE	Yes, 12/14/2001	Yes, 12/31/2003
LE for VSE/ESA V2R6	5690-VSE	No	No

COBOL Modernization Function:

- **Identifies COBOL language elements and CICS commands in the input COBOL source programs that are:**
 - Not supported by the target COBOL compiler release
 - Are supported with a different syntax by the target COBOL compiler release
- **Will do one of the following to the identified elements:**
 - Converts them to the equivalent in the target COBOL language release
 - Removes them if they are obsolete and not required in the target COBOL compiler release
 - Flags them for user manual conversion

COBOL Modernization Outputs:

- **Reports**

- Identification of source requiring conversion from the source COBOL compiler version to the target COBOL compiler version:
 - Source elements identified
 - Source elements converted
 - etc

- **Converted Source**

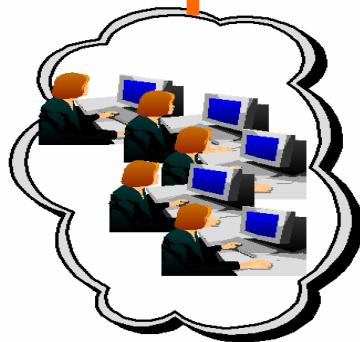
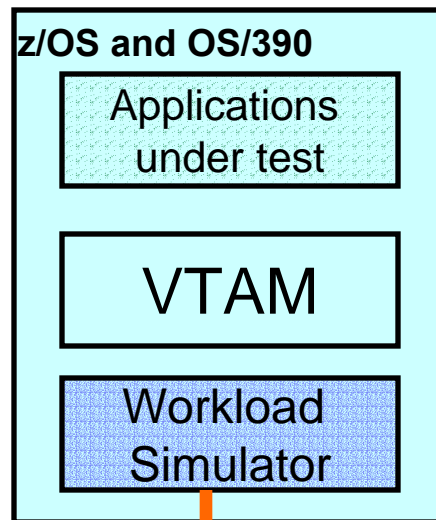
- Converted COBOL program source
- Converted COBOL copy files

Debug Tool Utilities and Advanced Functions Summary:

- **Common User Interface Across Systems And Subsystems**
- **Consistent Across Languages**
 - COBOL, C/C++, PL/I, Assembler, HP Java
- **Environments Supported**
 - CICS
 - TSO
 - JES/Batch
 - IMS Including IMS/TM
 - DB2 Including Stored Procedures
 - Unix System Services (USS)
 - MQSeries
- **Debug Tool Utilities and Advanced Functions Features:**
 - Source-level Debugging
 - Step mode debugging
 - **Multiple Breakpoints**
 - at program statements
 - at change of storage / variable
 - at subroutine call / entry
 - Recovery of program ABENDS
 - Step Mode Debugging
 - Dynamic Program Patching
 - Statement Frequency Counter
 - Enhancements for Interactive Debugging
 - “disassembly” interactive debug support
 - An interface to the Fault Analyzer tool
 - Code coverage tool for unit and regression testing
 - COBOL modernization utilities
 - Support for OS/VS COBOL source programs
- **For More Information:**
<http://www-306.ibm.com/software/awdtools/debugtool/>

IBM Workload Simulator

Workload Simulator Functional Overview



Features:

- Auto Generation Of Scripts
- Auto Generation Of Networks
- Controls Resource During Runs
- Simulates Different Terminals, Terminal Features And Terminal Operator Actions
- Executes Independently Of The System Under Test
- Provides utilities for post-test analysis
- **Capture your live 3270 session and automatically create test scripts**
- **A powerful scripting language for modifying and creating your own 3270 and TCP scripts**
- **Run test scripts to simulate network traffic against live systems and applications**
 - Simulate a single user to test application functionality
 - Simulate multiple users to generate a test load
- **Display and report Test Results**
- **Latest PTF allows Rational TestManager to run Workload Simulator**

What features does Workload Simulator provide?

- **Capture your live 3270 session and automatically create test scripts**
- **A powerful scripting language for modifying and creating your own 3270 and TCP scripts**
- **Run test scripts to simulate network traffic against live systems and applications**
 - Simulate a single user to test application functionality
 - Simulate multiple users to generate a test load
- **Display and report Test Results**

What can I test using Workload Simulator?

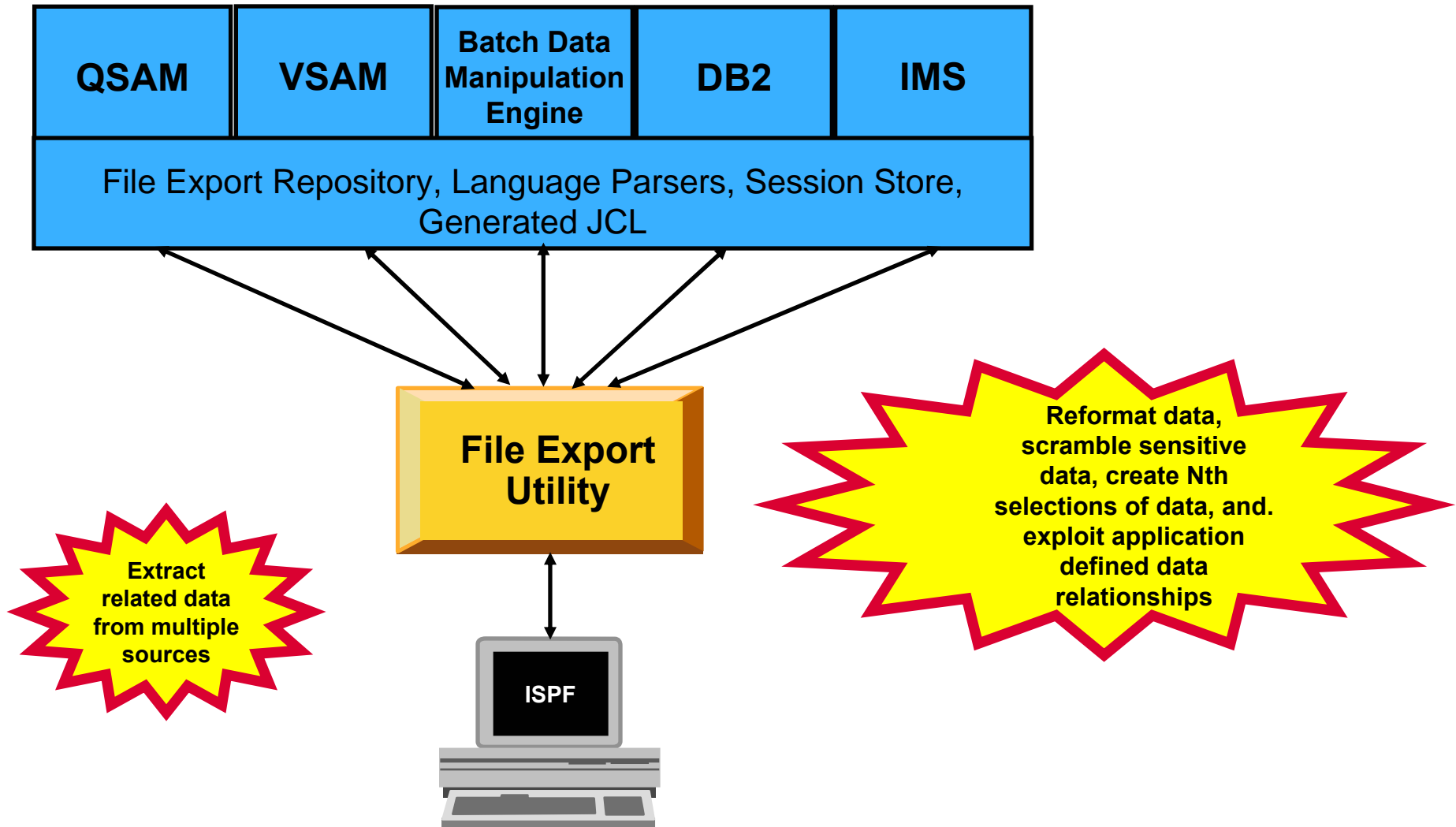
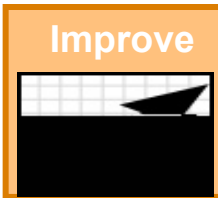
- **Regression Testing**
 - Verify correct application function after a change
 - **“Does it *still* work right?”**
- **Performance Testing**
 - **“How well can I make it perform?”**
- **Load or Capacity Testing**
 - Predict the impact of additional workload
 - **“What will happen with more users on the system?”**
- **Stress Testing**
 - Predict the impact of extremely high transaction rates
 - **“What will break first?”**

IBM File Export

File Export for z/OS

- File Export for z/OS offers highly selective data copying capabilities to simplify the complex problems of populating test environments, or migrating applications to new or additional environments.
 - **Copies all data in a related set of objects or a slice of data across a related set of objects**
 - **Supports application-defined relationships**
 - **Provides for one-to-one, one-to-many and many-to-one data creation**
 - **Includes highly flexible data selection and transformation rules**
 - **Supports DB2, IMS, and MVS data in one product**

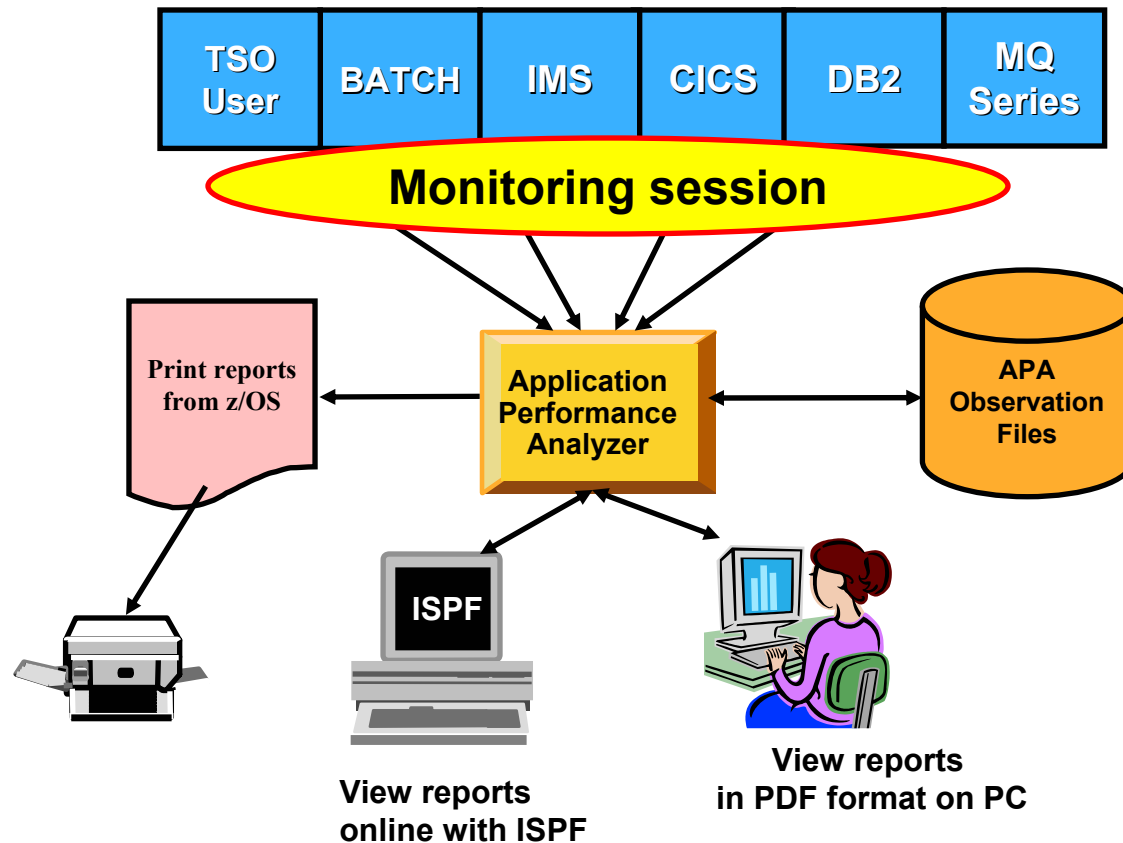
File Export Utility - *Flexible solution for exporting and importing related sets of enterprise data*



IBM Application Performance Analyzer

Application Performance Analyzer Functional Overview

Application performance analysis tooling for application developers



Features:

- Summary/Profile Reports with drill down into detailed levels via an ISPF interface or PDF hardcopy
- CPU, Load Module, and CSECT Analysis of all modules in the address space
- Source Statement (COBOL or PL1) or Instruction utilization in each CSECT
- Supports Fault Analyzer / Debug Tool Sidefiles
- Wait Time Analysis by Category, Task/Module, or Attribution
- DASD I/O Analysis by Device, DD Name, Dataset and Dataset Attributes, EXCP's, VSAM with Buffer Pool, I/O Wait, Over Time
- Sysplex Coupling Facility Reports
- DB2 SQL Analysis – Static and Dynamic – Service Times
- DB2 Analysis by DBRM, Statement, and Plan
- CICS Session Statistics, Transaction Analysis by CPU Usage, Mean and Total Service Time, and Waits by Transaction
- IMS CPU and Service Time Analysis
- MQ Series Analysis by Queue, Request, and Transaction
- Interval Reporting
- Adjustable Sampling Rate
- Repeated Observation Sessions
- Internal (APA) and External (RACF, etc) Security

What is Application Performance Analyzer ?

- A performance analyzer for application programs
 - **A tool that shows resources used by an application**
 - **so you can identify the cause of performance problems**
- Delivers information about an application, to help answer:
 - **What programs are running?**
 - **What percentage of time is spent in each program?**
 - **Which lines of code are using the most time?**
 - **What files and databases are being used?**
 - **Why is the application waiting?**

Application Performance Analyzer

- **Get information about application performance:**
 - Interactively monitor a running application
 - Schedule monitoring for an application that will run later
- **Support for application running in:**
 - Batch jobs
 - CICS transactions
 - IMS transactions
 - TSO

Application Performance Analyzer Report Summary

CICS

Session Statistics
 CPU Usage by Txn
 Mean Service Time by Txn
 Total Service Time by Txn
 Service Time by Task Id
 Wait Time by Txn

Storage & Statistics

Measurement Profile
 Load Module Attributes
 Load Module Summary
 TCB Summary
 Memory Usage Timeline
 Data Space Usage Timeline
 TCB Execution Summary
 Processor Utilization Summary

DB2

Measurement Profile
 SQL Wait Time by Statement
 SQL Activity Timeline
 SQL Wait Time by Plan
 SQL Activity by DBRM
 SQL CPU/Svc Time by DBRM
 SQL Activity by Statement
 SQL CPU/Svc Time by Stmt
 SQL Activity by Plan
 SQL CPU/Svc Time by Plan
 SQL Statement Attributes
 SQL Threads Analysis
 SQL Wait Time by DBRM
 CPU by Plan/Stored Proc

Wait

Time by Task/Category
 Time by Task/Module
 Time Referred Attribution

CPU

Usage by Category
 Usage by Procedure
 Usage by Module
 Referred Attribution
 Usage by Code Slice
 Usage Timeline
 Usage Task/Category
 Usage Task/Module

MQSeries

Activity Summary
 Serv Time by Txn
 CPU Usage by Queue
 Wait Time by Queue
 CPU Usage by Request
 Wait Time by Reque
 CPU Usage by Txn
 Wait Time by Txn
 Serv Time by Queue
 Serv Time by Request

DASD

Usage by Device
 Activity Timeline
 Usage by DDNAME
 I/O Wait Time
 Usage by Dataset
 VSAM Buffer Pool Usag
 Dataset Attributes
 Summary
 D06 DASD VSAM Statistics

IMS

DL/I Call CPU Time
 DL/I Call Service Time

Coupling Facility

Summary
 Mean Times
 Facility Total Times

IBM Application Performance Analyzer Summary

- **Non-intrusive Performance Analyzer for Applications and Systems Programs to**

- Improve response time in online applications
- Improve batch turn around time
- Identify excessive I/O activity
- Identify excessive CPU usage
- Test the effects of increasing workload
- Isolate performance problems in new and existing applications

- **Types of Observation Sessions**

- Real-Time
- Scheduled
- Via Batch Submission

- **Environments Supported**

- CICS, DB2, IMS, JES/Batch, Sysplex, MQ Series

- **Application Performance Analyzer Features:**

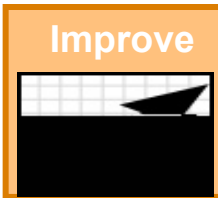
- Summary/Profile Repots with drill down into detailed levels via an ISPF interface or PDF hardcopy
- CPU, Load Module, and CSECT Analysis of all modules in the address space
- Source Statement (COBOL or PL1) or Instruction utilization in each CSECT
- Supports Fault Analyzer / Debug Tool Sidefiles
- Wait Time Analysis by Category, Task/Module, or Attribution
- DASD I/O Analysis by Device, DD Name, Dataset and Dataset Attributes, EXCP's, VSAM with Buffer Pool, I/O Wait, Over Time
- Sysplex Coupling Facility Reports
- DB2 SQL Analysis – Static and Dynamic – Service Times
- DB2 Analysis by DBRM, Statement, and Plan
- CICS Session Statistics, Transaction Analysis by CPU Usage, Mean and Total Service Time, and Waits by Transaction
- IMS CPU and Service Time Analysis
- MQ Series Analysis by Queue, Request, and Transaction
- Adjustable Sampling Rate
- Repeated Observation Sessions

- **Information Available At:**

www.ibm.com/software/awdtools/deployment

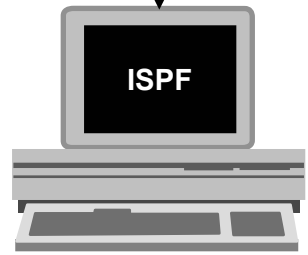
IBM Application Time Facility

Application Time Facility – *Easy for programmers to specify the jobs to receive simulated dates*



**IDMS
IDEAL
Natural**

Helps software development teams ensure their software performs as intended

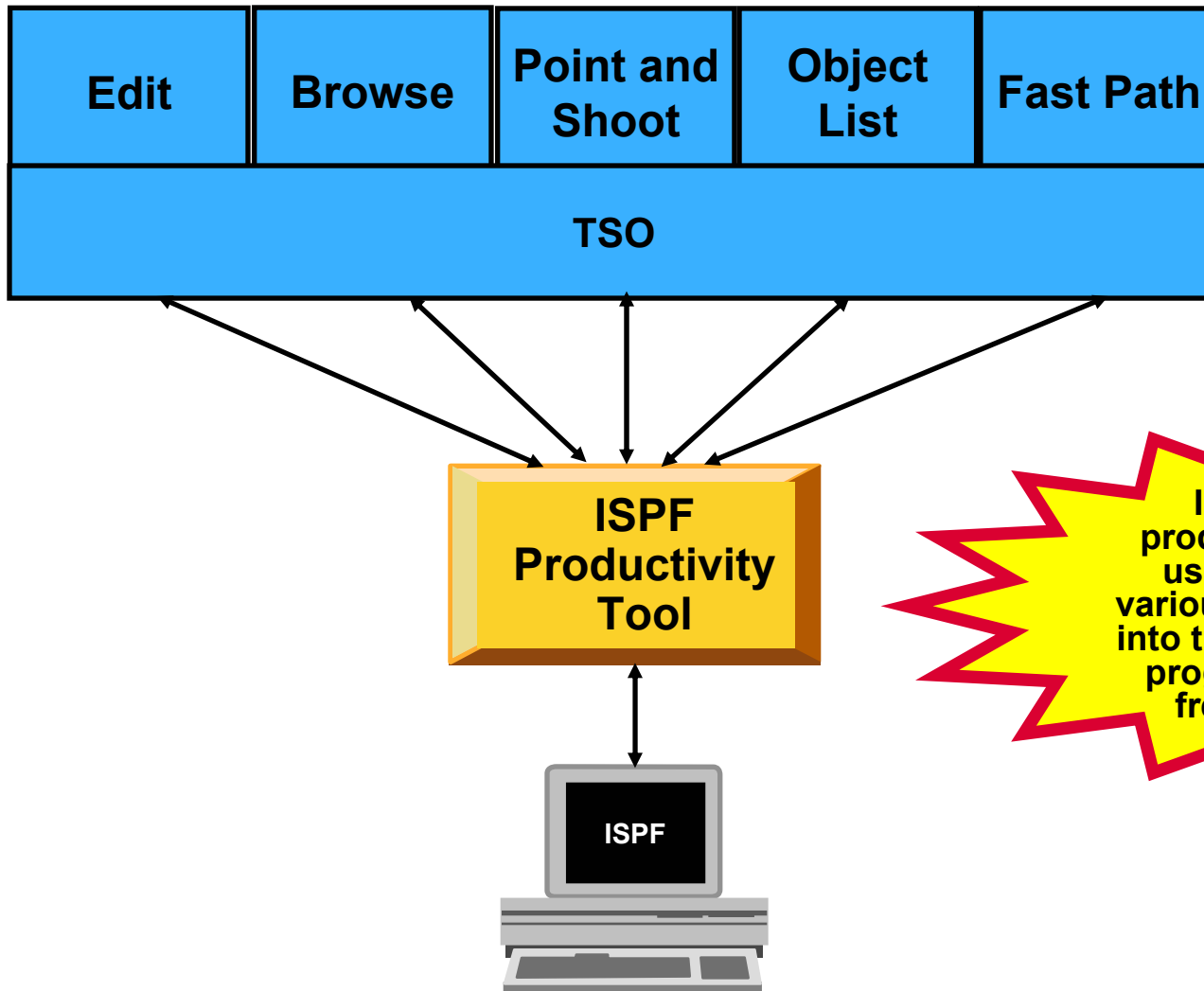
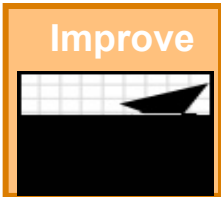


Application Time Facility Features

- **Shifts time zones for on-line regions so users will see their local time or, so dated application file updates will have the local time**
- **Restarts a failing job at the date/time it failed, ensuring that file update and reports are not affected**
- **Allows jobs that, due to unavoidable circumstances, run over a deadline to finish "on time"**
- **Handles all clock formats including decimal, binary, timer units, microseconds and TOD clock format**
- **On-line ISPF interface makes it easy for programmers to specify the jobs to receive simulated dates on an individual basis, or as generic groups by using a wild card**
- **Allows testing of applications that are reliant upon timing, time zones, or time and date formatting without changing z/Series system date / time settings**

IBM ISPF Productivity Tool

ISPF Productivity Tool – *Enhances TSO ISPF productivity*



Increases the productivity of ISPF users by packing various ISPF functions into the areas in which programmers most frequently work

ISPF Productivity Tool Features

- **Consolidates commands within a single panel**
- **Presents a comprehensive, object-oriented, project-related list of data sets**
- **Provides extensive point & shoot capabilities**
- **Extended TSO command execution**
- **Automatic PDS compression**
- **Reduces keystrokes and EXCP counts**
- **Enhanced print and clipboard capabilities**
- **Improves ISPF navigation**
- **SCLM, Librarian, Panvalet Library support**
- **IPT increases the productivity of ISPF users by packing various ISPF functions into the areas in which programmers most frequently work, such as browse, edit ,member lists, and dataset lists.**
- **New commands and functions reduce the need to navigate to additional panels to perform utility functions. This results in reduced keystrokes and increase productivity.**

Get more information about these tools at:

www.ibm.com/software/awdtools/deployment

The screenshot shows the IBM website page for z/OS Problem Determination and Deployment Tools. The page layout includes a left-hand navigation menu with links for Library, News, How to buy, Training and certification, Services, and Support. The main content area features a breadcrumb trail (Software > Software Development > z/OS Problem Determination and Deployment Tools), a descriptive paragraph about the tools' capabilities, and a search bar labeled 'Select a Product' with a 'Go' button. Below the search bar are two columns: 'Products' featuring 'Application Monitor for z/OS' and 'Solutions' featuring 'Problem Determination and Deployment Tools Information'. A right-hand sidebar titled 'Highlights' lists updates for File Manager, Fault Analyzer, and Debug Tool, along with a link for WebSphere and zSeries AD tools help. A 'Related software' section is partially visible at the bottom left.

Software > Software Development > z/OS Problem Determination and Deployment Tools

z/OS[®] Problem Determination and Deployment Tools have powerful functions and features. Organizations that choose to use them improve the health of their application portfolios.

Select a Product

Products

- Application Monitor for z/OS
A non-intrusive performance

Solutions

- Problem Determination and Deployment Tools Information

Highlights

- File Manager: Latest PTF information
- Fault Analyzer: Latest PTF information
- Debug Tool: Latest PTF information
- WebSphere and zSeries AD tools help meet on

Related software

For more information

- z/OS Problem Determination and Deployment Tools
 - www.ibm.com/software/awdtools/deployment
 - www.ibm.com/software/awdtools/faultanalyzer
 - www.ibm.com/software/awdtools/filemanager
 - www.ibm.com/software/awdtools/debugtool
 - www.ibm.com/software/awdtools/apa
 - www.ibm.com/software/awdtools/migration
 - www.ibm.com/software/awdtools/tictoc/
 - www.ibm.com/software/awdtools/ispfproductivitytool
 - www.ibm.com/software/awdtools/fileexport
 - [zSeries Application Development Tools information center](#)
 - [Introduction to the IBM Application Development Tools on z/OS Redbook](#)

IBM PD Tools Product Identification

- **Fault Analyzer for z/OS (5655-P16)**
- **File Manager for z/OS (5655-P17)**
- **Debug Tool Utilities and Advanced Functions for z/OS (5655-P15)**
- **Application Performance Analyzer for z/OS (5697-N37)**
- **Workload Simulator for z/OS & OS/390 (5655-I39)**
- **Migration Utility (5697-I89)**
- **Application Time Facility (5697-N42)**
- **ISPF Productivity Tool (5698-A81)**
- **File Export Utility (5697-I12)**

PIDS / Part #s for z Rational

CURRENT AD TOOLS Feb 1, 2006					
Rational Z Tools					
Wwide Prod Code Dscr	PID	Rev Stream	Part Dscr Long	non-zSeries Part Num	zSeries Part Num
Ratl Functional Tester	5724G25	License + Maint	RATL FUNCTIONAL TESTER AUTHORIZED USER LIC+SW MAINT 12 MO	D53NFL	D54BSLL
Ratl Functional Tester		Maint Reinstatement	RATL FUNCTIONAL TESTER AUTHORIZED USER SW MAINT REINSTATE 12 MO	D53NGLL	D54BTLL
Ratl Functional Tester		Maint Renewal	RATL FUNCTIONAL TESTER AUTHORIZED USER ANNUAL SW MAINT RNWL	E0197LL	E01I4LL
Ratl Functional Tester	5724G25	License + Maint	RATL FUNCTIONAL TESTER FLOATINGUSER LIC+SW MAINT 12 MO	D530BLL	D54BULL
Ratl Functional Tester		Maint Reinstatement	RATL FUNCTIONAL TESTER FLOATINGUSER SW MAINT REINSTATE 12 MO	D530CLL	D54BVLL
Ratl Functional Tester		Maint Renewal	RATL FUNCTIONAL TESTER FLOATINGUSER ANNUAL SW MAINT RNWL	E012DLL	E01I5LL
Ratl Functional Tester Extension	5724J07	License + Maint	RATL FUNCT TEST EXT TERMINAL BASED APS ATHUSR LIC+SW MAINT 12 MO	D53ZXLL	D53ZTLL
Ratl Functional Tester Extension		Maint Reinstatement	RATL FUNCT TEST EXT TERMINAL BASED APS ATHUSR SW MAINT REINSTATE 12 MO	D53ZYLL	D53ZULL
Ratl Functional Tester Extension		Maint Renewal	RATL FUNCT TEST EXT TERMINAL BASED APS ATHUSR ANNUAL SW MAINT RNWL	E01CDLL	E01CBLL
Ratl Functional Tester Extension	5724J07	License + Maint	RATL FUNCT TEST EXT TERMINAL BASED APS FLTUSR LIC+SW MAINT 12 MO	D53ZVLL	D53ZZLL
Ratl Functional Tester Extension		Maint Reinstatement	RATL FUNCT TEST EXT TERMINAL BASED APS FLTUSR SW MAINT REINSTATE 12 MO	D53ZWLL	E01CELL
Ratl Functional Tester Extension		Maint Renewal	RATL FUNCT TEST EXT TERMINAL BASED APS FLTUSR ANNUAL SW MAINT RNWL	E01CCLL	D5400LL
Ratl Performance Tester	5724J96	License + Maint	RATL PERFORMANCE TESTER AUTHORIZED USER LIC+SW MAINT 12 MO	D54LRLL	NA
Ratl Performance Tester		Maint Reinstatement	RATL PERFORMANCE TESTER AUTHORIZED USER SW MAINT REINSTATE 12 MO	D54LSLL	NA
Ratl Performance Tester		Maint Renewal	RATL PERFORMANCE TESTER AUTHORIZED USER ANNUAL SW MAINT RNWL	E01M9LL	NA
Ratl Performance Tester	5724J96	License + Maint	RATL PERFORMANCE TESTER FLOATING USER LIC+SW MAINT 12 MO	D54LTLL	NA
Ratl Performance Tester		Maint Reinstatement	RATL PERFORMANCE TESTER FLOATING USER SW MAINT REINSTATE 12 MO	D54LULL	NA
Ratl Performance Tester		Maint Renewal	RATL PERFORMANCE TESTER FLOATING USER ANNUAL SW MAINT RNWL	E01MALL	NA
Ratl Performance Tester for z/OS	5724J96	License + Maint	RATL PERFORMANCE TESTER FOR Z/OS PER VALUE UNIT LIC+SW MAINT 12 MO	NA	D556ULL
Ratl Performance Tester for z/OS		Maint Reinstatement	RATL PERFORMANCE TESTER FOR Z/OS PER VALUE UNIT SW MAINT REINSTATE 12 MO	NA	D556VLL
Ratl Performance Tester for z/OS		Maint Renewal	RATL PERFORMANCE TESTER FOR Z/OS PER VALUE UNIT ANNUAL SW MAINT RNWL	NA	E01UCLL