



IBM Software Group

# CICS Tools – ISV Alternatives

Cornell Keene  
AD/CICS Tools Enablement Team  
[ckeene@us.ibm.com](mailto:ckeene@us.ibm.com)



 business on demand software

# Preface

- The following terms are trademarks or registered trademarks of the International Business Machines Corporation in the United States and/or other countries:
  - ▶ CICS, CICS for MVS/ESA, CICS/ESA, CICSplex SM
  - ▶ DB2
  - ▶ DFSMS/MVS
  - ▶ IBM
  - ▶ MQSeries
  - ▶ MVS/ESA
  - ▶ OS/390
  - ▶ RMF, Resource Measurement Facility
  - ▶ S/390, z/OS
  - ▶ WebSphere
- The following terms are trademarks Tivoli Systems, an IBM Company:
  - ▶ Tivoli Management Environment, TME 10
- Java and all Java-based trademarks and logos are trademarks or registered trademarks of Sun Microsystems, Inc. in the United States and/or other countries.



# Portfolio Overview

## Problem Determination Tools

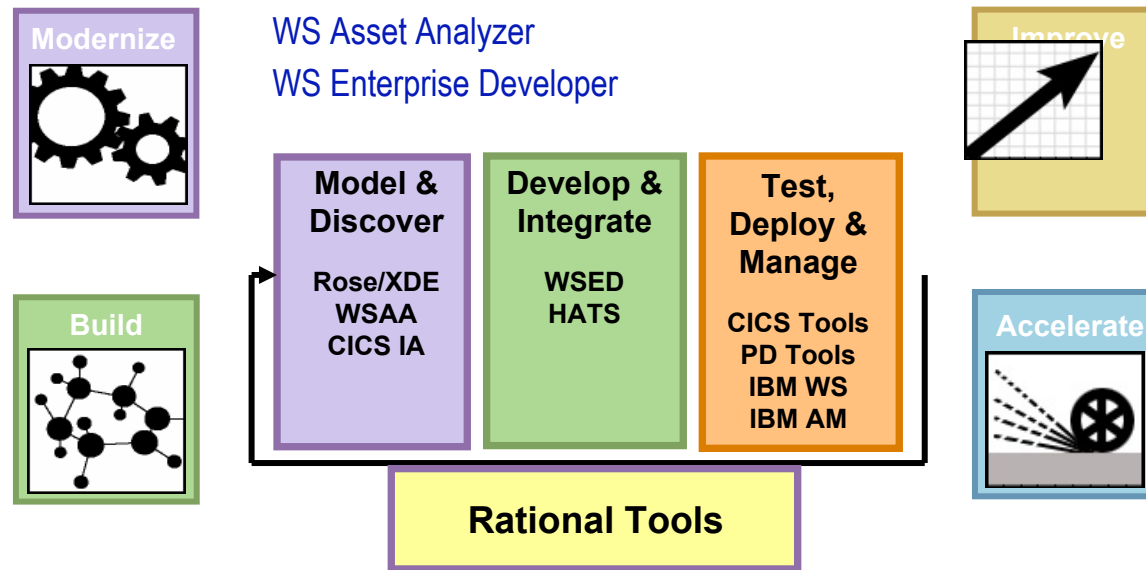
- File Manager
- File Export
- Fault Analyzer
- Debug Tool Utilities
- TicToc
- IBM Application Monitor
- IBM Workload Simulator
- Rational Functional Tester Extension

## CICS Tools

- CICS Interdependency Analyzer
- CICS Performance Analyzer
- CICS Business Event Publisher
- CICS VSAM Transparency
- CICS Batch Application Control
- IBM Session Manager
- CICS VSAM Recovery
- CICS VSAM Copy
- CICS OTTO
- CICS Configuration Manager

## WAS/z Tools

- WS Application Monitor
- WS Workload Simulator
- WS Asset Analyzer
- WS Enterprise Developer



## Host Integration Tools

- Personal Communications
- Host Publisher
- Host On Demand
- Host Access Transformation Server

## Runtimes

- WebSphere Application Server
- CICS, IMS, DB2
- Enterprise COBOL/PL/I
- Host Access Transformation Server



## What is CICS Performance Monitor for z/OS?

- Real-time and historical performance monitoring, management and troubleshooting tool
  - ▶ Friendly Graphical User Interface
    - Exception management
    - Historical task data collection
      - Extensive filtering capabilities
  - ▶ Access to detailed performance management data and the ability to change parameters
- Product number - 5655-I46
- Releases Supported ...
  - ▶ CICS Transaction Server for z/OS, Version 3
  - ▶ CICS Transaction Server for z/OS, Version 2
  - ▶ CICS Transaction Server for OS/390, Version 1.3



## CICS PM at a glance

- Comprehensive user-friendly interface to enable users to :
  - Define and modify thresholds for exception management
  - Monitor events status
  - Display alerts and their recent histories
  - Define historical task data collection criteria
  - Query historical task data using extensive filtering capabilities
  - Investigate problems online
  - Make changes to key system and resource parameters
  - ‘KILL’ function for looping tasks and system stalls

IBM CICS Performance Monitor for z/OS

Monitor Topology Event List Status Window Help

- [-] HURPLEXW ✓
  - [-] Other systems ✓
    - CICSHW61 ✓
  - [-] HURPLEX1 ✗
    - [-] ALLHCICS ✗
      - MV26AORS ✗
        - CICSHA61 ✗
        - CICSHA62 ✗
        - CICSHT61 ✗
      - MV27AORS ✗
        - CICSHA71 ✓
        - CICSHA72 ✓
        - CICSHT71 ✗
  - [-] Other systems ✓
    - CICSHA63 ✓
    - CICSHA64 ✓

Activity		
ICEs		✓
Tasks		✓
Taskfile		✓
SAM Max Tasks		✓
SAM Stall Cond		✓
SAM Tran Dump		✓
SAM Not Avail		✓
SAM Sys Dump		✓
SAM SOS		✓

Files & DB2		
CFDT Pools		✓
Data Tables		✓
DB2 Connection		✓
DB2 Entries		✓
DB2 Trans		✓
Dataset Name		✓
Local Files		✓
LSR Buffers		✓
LSR Pools		✓
Remote Files		✓

Queues		
Extra TD Queues		✓
Indirect TD Queues		✓
Remote TD Queues		✓
Transient Data		✓
TS Pools		✓
Temporary Storage		✓
Shared TSQ		✓
Intra TD Queues		✓

Connectivity		
CPIC Partners		✓
FEPI Conns		✓
ISC & MRO		✓
LU 6.2 Modenames		✓

Logging		
Journal Names		✓

Regions		
CICS Storage		✓
Region		✓
CICS Dispatcher		✓
ENQ Pools		✓
Transaction Dumps		✓

Region Histories Resources Summary

Status for scope: HURPLEXW Filter: None Clear filter

Event	Region	Resource	Identifier	Attribute	Operator	Reference value	Current value	Severity	Priority

Event Monitor Threshold Definitions Installed Threshold Definitions

Connected - winmvs26 (9.20.101.6:20231,20131)

# OMEGAMON XE for CICS

## What does it do?

- Enables proactive management of performance and availability of CICS systems – including CICS in Parallel Sysplex environments
- Helps identify bottlenecks at the record level
- Can trace transactions from one system to another
- Helps detect application performance problems
- Eases creation of complex thresholds, situations

## Exploitation

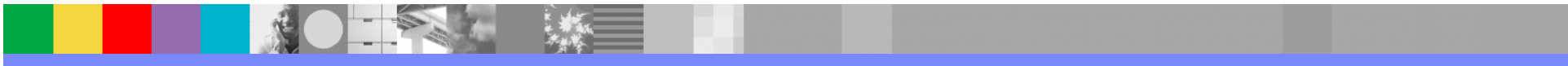
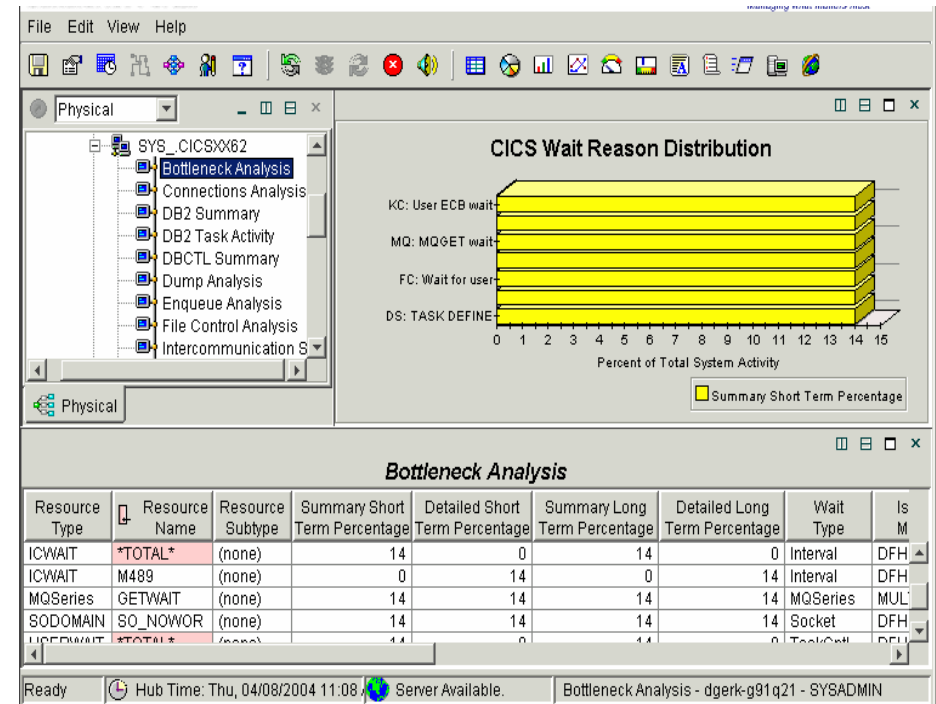
- Exploitation of CICS Transaction Server V2.3 and the upcoming V3
- CICS Dispatcher & JVM support, MVS Logger

## Product Simplification

- Merge XE & CICSplex into single package

## Performance and Scalability

- Resource consumption improvements



## CICS Tools – ISV Replacements

### **CICS Online Transmission Time Optimizer – CICS OTTO**

- Optimize 3270 data streams to increase your system performance

### **CICS VSAM Copy – CICS VC**

- Create consistent point-in-time copies of VSAM files concurrent with business-critical online processing activity

### **CICS VSAM Recovery – CICS VR**

- Automated recovery of lost VSAM data

### **CICS Batch Application Control – CICS BAC**

- Simplify and automate batch access to CICS resources

### **IBM Session Manager – ISM**

- Provide secure, reliable, and easy access to multiple z/OS and OS/390 applications from a single terminal





## CICS Tools – ISV Replacements

### **CICS Online Transmission Time Optimizer – CICS OTTO**

- Optimize 3270 data streams to increase your system performance



## What is CICS OTTO ?

- CICS Online Transmission Time Optimizer for z/OS
  - CICS OTTO optimizes
    - Data streams directed to 3270-type display stations and/or printers
    - Data streams directed to SCS-type printers
    - Data streams directed to banking terminals 3600/4700
  - CICS-specific solution (not VTAM)
- Reduces network load
- Better use of existing network resources and devices
- Easy to install, customize and use
- Statistics maintained
- Optimization features are easily controlled



# CICS OTTO - Operation

```
YCLZC07 - [24 x 80]
PRIMARY OPTION MENU           Otto for CICS V1R1           OTTOM01

OPTION ==> _____

1.  START / STOP  Otto for CICS Optimization
2.  Display and Control Otto Image Pool Size
3.  3270 Component Based Optimization Control
4.  3600/SCS Component Based Optimization Control
5.  LU Based Optimization Control
6.  Module Based Optimization Control
7.  EXCLUDE LU's from Optimization
8.  EXCLUDE Modules from Optimization
9.  SELECT LU's for Optimization
10. Trace
11. System Options
12. Statistics Control
13. Display Statistics
14. Otto Commands (Compatibility Mode)
X.  Exit

-----
F1=Help   F3=Exit

MR  c                                     04/014
Connected to remote server/host winmvs20 using port 23
```



# CICS OTTO - Statistics

```

IYCLZC07 - [24 x 80]
COMPONENT STATISTICS          Otto for CICS V1R1          OTTOM21

OPTION ==> _

          Statistics for all 3270 LU's

From      20-12-2001 11-12-25   to ***** *****

          COUNT          OPTIMIZED          PERCENTAGE
-----
Number of output messages . . :          99          98          98%

          COUNT BEFORE          COUNT AFTER          REDUCTION
-----
Number of output bytes . . . :          129.245          72.195          45%

-----
F3=End          F9=Write Statistics to OTTOSTAT or Console          F4=Return
    
```

MR c A 04/014

Connected to remote server/host winmvs20 using port 23



## CICS Tools – ISV Replacements

### **CICS Online Transmission Time Optimizer – CICS OTTO**

- Optimize 3270 data streams to increase your system performance

### **CICS VSAM Copy – CICS VC**

- Create consistent point-in-time copies of VSAM files concurrent with business-critical online processing activity



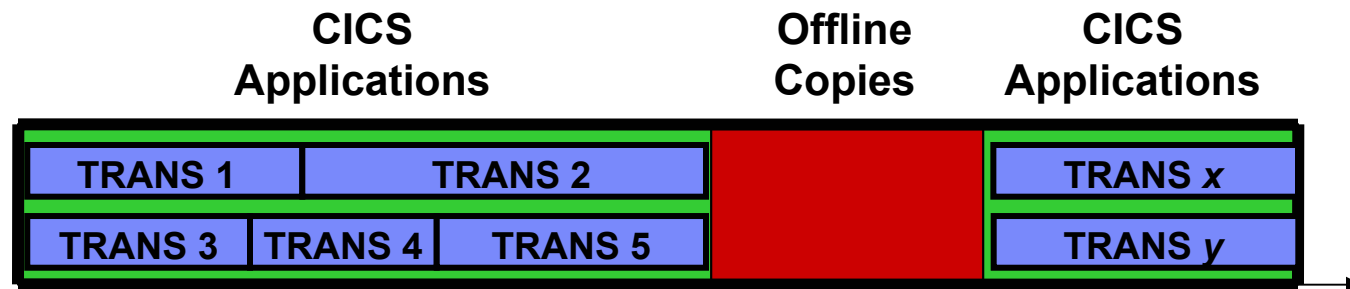
# CICS VSAM Copy for z/OS – Version 1.1

- **What does it do?**
  - ▶ Creates CONSISTENT copies of VSAM data sets
    - While they remain online and open to CICS for update
    - While they are closed to CICS
  
- **Why do I need it?**
  - ▶ Create ad-hoc copies of VSAM data sets
    - Without affecting current performance of running CICS applications
    - Produced copies are consistent (no incomplete units of work)
  
  - ▶ Work towards 24\*7 VSAM availability
    - No need to take the data set offline from CICS before creating copy



## Currently available offline copy tools

- Offline copy tools



- Advantages

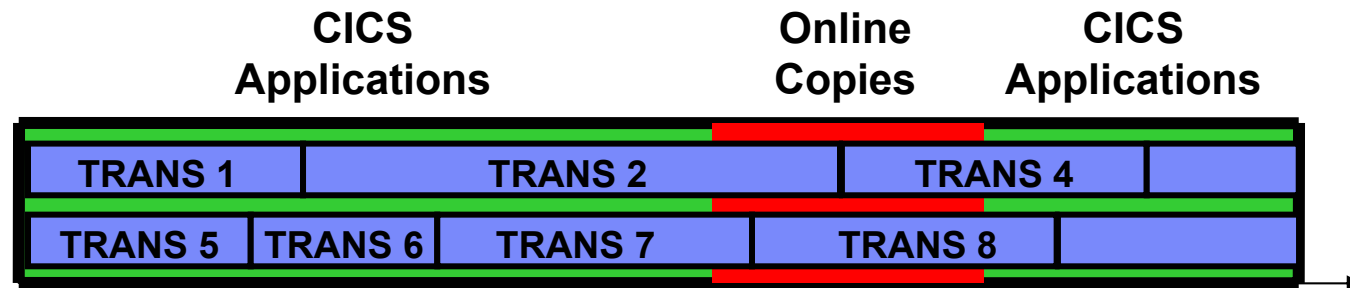
- ▶ Consistent copies produced (no incomplete units of work)
- ▶ Often fast and robust (multiple copies in one run)

- Disadvantages

- ▶ Must take data sets offline from CICS
- ▶ Usually must be scheduled in advanced

## Currently available online copy tools

- **Online copy tools**



- **Advantages**

- ▶ Data sets remain online to CICS for update

- **Disadvantages**

- ▶ Produced copy may be fuzzy (incomplete units of work included)
- ▶ Fuzzy copies require forward recovery to make them consistent





## “Snapshot Copy” Products

- **Hardware/software solution to online copy**
  - ▶ **Concurrent Copy**
  - ▶ **RVA devices**
- **Requires activity to all involved data sets be quiesced before copy process can begin**
  - ▶ **May take several minutes if manual process**
  - ▶ **May cause short interruption for online users**
  - ▶ **May cause errors/abends in CICS transactions that are not written to handle closed files**



## CICS VSAM Copy for z/OS advantages

- **Includes best of both worlds**
  - ▶ Create consistent copies of VSAM data sets
  - ▶ Create copies of data sets while they remain online to CICS for update
  - ▶ Copy multiple VSAM data sets in one run
  - ▶ No degradation to performance of running CICS transactions
  
- **Supports KSDS, ESDS, RRDS, and VRRDS VSAM data sets**
  
- **Supports copying a VSAM KSDS base cluster with alternate indices**
  
- **Automatically determines if the data set is online or offline to CICS before copy – no additional user intervention required**



## CICS Tools – ISV Replacements

### **CICS Online Transmission Time Optimizer – CICS OTTO**

- Optimize 3270 data streams to increase your system performance

### **CICS VSAM Copy – CICS VC**

- Create consistent point-in-time copies of VSAM files concurrent with business-critical online processing activity

### **CICS VSAM Recovery – CICS VR**

- Automated recovery of lost VSAM data



# CICS VSAM Recovery

- What does it do?
  - ▶ Recovers CICS and batch VSAM data after physical or logical corruption
  - ▶ Removes updates made by failed batch job steps
  - ▶ Reapplies changes made by applications since last data back up.
  
- Why do I need it?
  - ▶ Reduce business cost of VSAM errors
    - Reduce impact of batch window processing errors
    - Helps you detect and reverse errors
    - Reduce the impact for VSAM data users against the effects of physical loss or incorrect update
      - Reduce cost of down time
      - Helps you minimize recovery time



Help

CICSVR main menu

Command ==&gt; \_\_\_\_\_

Select one and press Enter.

- 1 1. List of VSAM spheres
2. List of logs (CICS V4)
3. List of log streams (CICS TS)
4. List of registered log of logs (CICS TS)
5. JCL skeleton

(C) Copyright IBM Corp. 1991, 2002. All rights reserved.

F1=Help

F3=Exit

F10=Menu bar F12=Cancel

Help

CICSVR VSAM sphere list include

Command ==> \_\_\_\_\_

Specify VSAM sphere list search criteria, then press Enter.

VSAM sphere . . . . . EMPLOYEE.PAYROLL.\*

OR

Specify the name of a data set that contains a list of VSAM spheres,  
then press Enter.

Data Set Name . . . . . \_\_\_\_\_

F1=Help    F12=Cancel

(C) Copyright IBM Corp. 1991, 2002. All rights reserved.  
F1=Help    F3=Exit    F10=Menu bar F12=Cancel

Admistrate Utilities Tools List View Help

CICSVR VSAM sphere list

Row 1 to 6 of 6

Command ==> \_\_\_\_\_

Select one or more VSAM spheres, then select an action.

N Use default parameters for selected spheres

S	VSAM sphere	Last time referenced	RLS RR flag on
-	EMPLOYEE.PAYROLL.SPHERE1	03.009 17:12:10	
-	EMPLOYEE.PAYROLL.SPHERE2	03.009 17:12:10	
<u>S</u>	EMPLOYEE.PAYROLL.SPHERE3	03.010 01:19:45	N
=	EMPLOYEE.PAYROLL.SPHERE4	03.009 17:12:10	N
-	EMPLOYEE.PAYROLL.SPHERE5	03.009 17:12:10	N
-	EMPLOYEE.PAYROLL.SPHERE6	03.009 17:12:10	N

\*\*\*\*\* Bottom of data \*\*\*\*\*

F1=Help

F3=Exit

F4=CompRec

F5=FwdRec

F6=Backout

F7=Bkwd

F8=Fwd

F10=Menu bar

F11=Dereg

F12=Cancel

Administrate Utilities Tools List View Help

Row 1 to 6 of 6

Command ==>

- |          |                            |    |
|----------|----------------------------|----|
| <u>1</u> | 1. Complete recovery...    | F4 |
|          | 2. Forward recover only... | F5 |
|          | 3. Backout only...         | F6 |

Select one or

ion.

N Use default parameters for selected spheres

S VSAM sphere

EMPLOYEE.PAYROLL.SPHERE1

EMPLOYEE.PAYROLL.SPHERE2

S EMPLOYEE.PAYROLL.SPHERE3

EMPLOYEE.PAYROLL.SPHERE4

EMPLOYEE.PAYROLL.SPHERE5

EMPLOYEE.PAYROLL.SPHERE6

Last time referenced	RLS RR flag on
03.009 17:12:10	
03.009 17:12:10	
03.010 01:19:45	N
03.009 17:12:10	N
03.009 17:12:10	N
03.009 17:12:10	N

\*\*\*\*\* Bottom of data \*\*\*\*\*

F1=Help

F3=Exit

F4=CompRec

F5=FwdRec

F6=Backout

F7=Bkwd

F8=Fwd

F10=Menu bar

F11=Dereg

F12=Cancel



## CICS Tools – ISV Replacements

### **CICS Online Transmission Time Optimizer – CICS OTTO**

- Optimize 3270 data streams to increase your system performance

### **CICS VSAM Copy – CICS VC**

- Create consistent point-in-time copies of VSAM files concurrent with business-critical online processing activity

### **CICS VSAM Recovery – CICS VR**

- Automated recovery of lost VSAM data

### **CICS Batch Application Control – CICS BAC**

- Simplify and automate batch access to CICS resources



# CICS Batch Application Control

- **New CICS tool**
  - ▶ Announced November 2, 2004
  - ▶ Generally available November 26, 2004
  
- Primarily CA-DADS replacement
- What does it do?
  - ▶ Helps a sysprog manage a batch job alongside online CICS applications (batch window)
  - ▶ Allows them to deallocate VSAM datasets from online CICS applications, then reallocate them to CICS after batch job complete
  - ▶ Powerful “group” feature enables multiple resources to be managed
  - ▶ Desktop GUI available (not mandatory – green screen access also available)
  
- Why do I need it?
  - ▶ Reduces errors and abends related to batch processing
  - ▶ Reduces manual interventions by operators and system programmers
  - ▶ Can help decrease length of batch window



# CICS Batch Application Control

- **CICS BAC advantages**
  - ▶ Incorporates the most common user requirements received for resource control
  - ▶ Takes advantage of newer CICS technologies (EXCI, SPI, RDO, etc.)
  - ▶ Provides a Windows-based GUI to perform administrative function (not required for daily operations)
  
- **CICS BAC benefits**
  - ▶ Increase CICS availability
  - ▶ Reduce user intervention
  - ▶ Reduce possibility of errors
  - ▶ Helps lower the total cost of ownership of the zSeries platform



## CICS Tools – ISV Replacements

### **CICS Online Transmission Time Optimizer – CICS OTTO**

- Optimize 3270 data streams to increase your system performance

### **CICS VSAM Copy – CICS VC**

- Create consistent point-in-time copies of VSAM files concurrent with business-critical online processing activity

### **CICS VSAM Recovery – CICS VR**

- Automated recovery of lost VSAM data

### **CICS Batch Application Control – CICS BAC**

- Simplify and automate batch access to CICS resources

### **IBM Session Manager – ISM**

- Provide secure, reliable, and easy access to multiple z/OS and OS/390 applications from a single terminal



## IBM Session Manager for z/OS V1.2

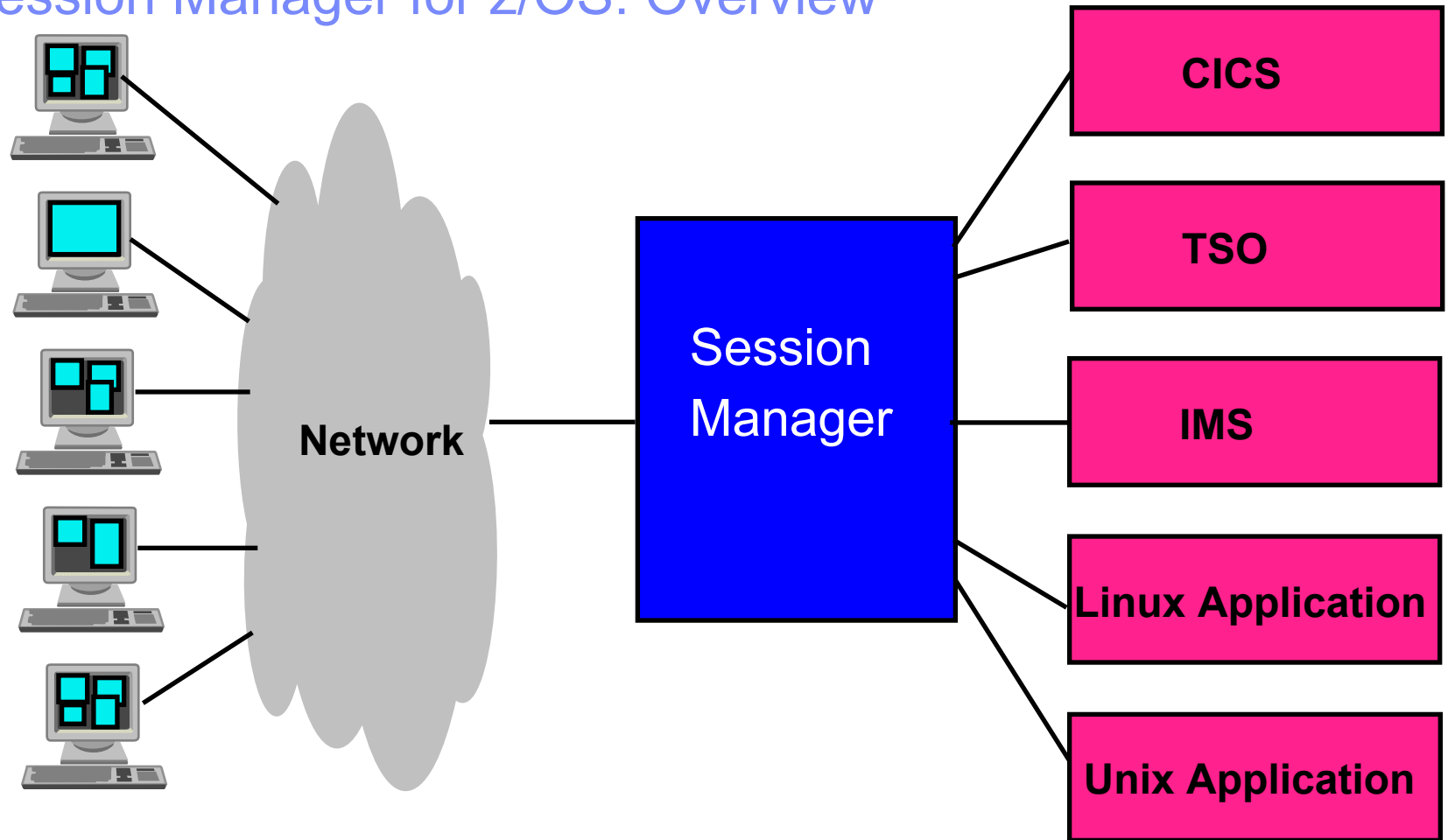
GA August 6, 2004

### **A secure and user-friendly method of accessing multiple OS/390 or z/OS systems from a single 3270 terminal - VTAM and TCP/IP**

- Password-protected menu gives access all applications in network
- Log-off procedures, security checking, audit logging and centralized administration, operations, and monitoring
- Benefits to helpdesk and operations personnel - Spy function
- Benefits in training staff – Demo function
- Centralized user ID admin and the ability to broadcast messages to end users
- Dynamic menus support



## IBM Session Manager for z/OS: Overview



# Session Manager for z/OS: Overview....

## End-User Interaction --> [Application Access](#)

```

Session A - [24 x 80]
-----
Session Manager           Menu Panel           24/01/2003 09:41:21
TN32 0914180B           JONES1

Sel      DESCRIPTION           STATUS
---
PF1      CICS TS 2.2 Demo region           Avail
PF2      CICS TS 2.2 CICS PM Demo Region 1  Avail
PF3      CICS TS 2.2 CICS PM Demo Region 2  Avail
PF4      CICS TS 2.2 CICS PM Demo Region 3  Avail
PF5      CICS TS 2.2 CICS PM Demo WUI Server Avail
PF6      CICS TS 1.3 CTG Demo Region         Avail
PF7      TS01 on S01                     Avail
PF8      Linux instance - Pok              Avail
PF23     Disconnect from Session Manager    CMD
PF24     Logoff from Session Manager        CMD

USER JONES1 signed on at TN32 0914180B
===> _____

ESCAPES:  Menu @@      Bwd <<      Fwd >>

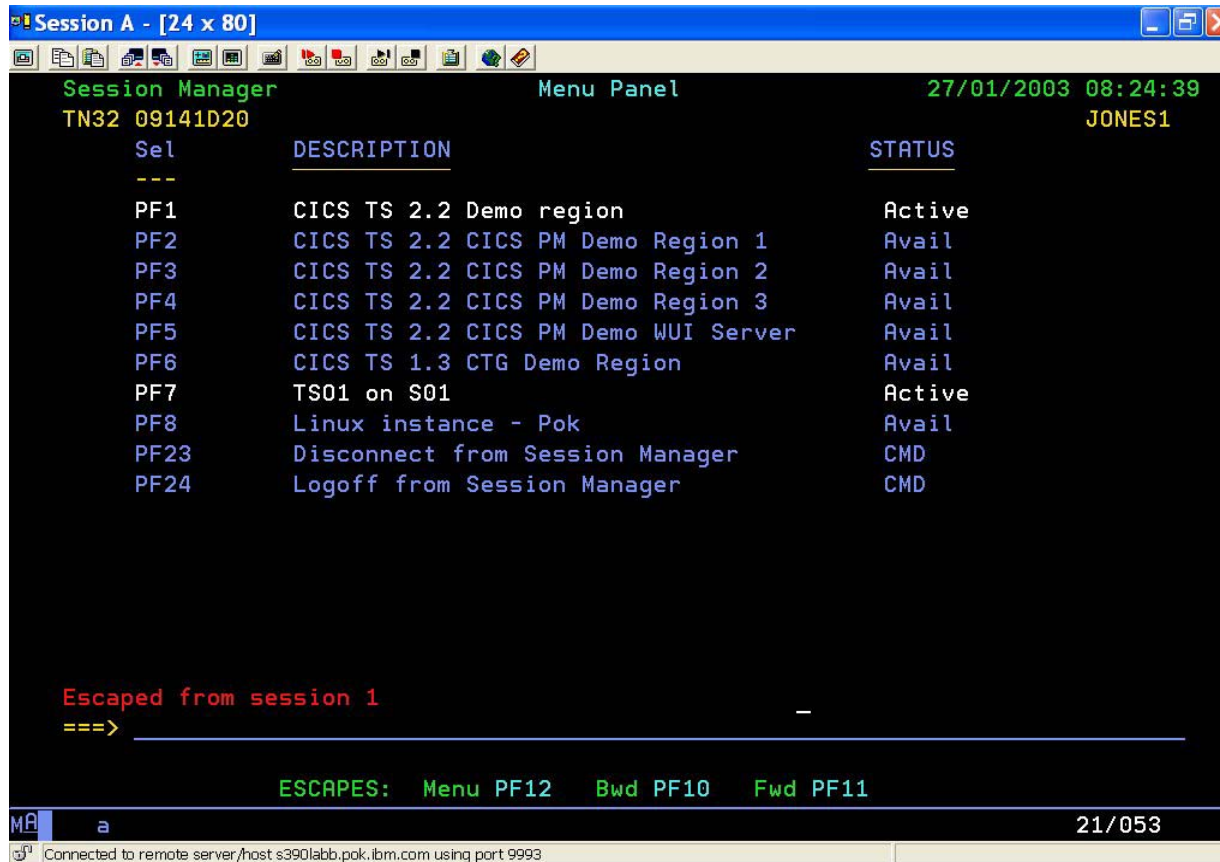
M@ a 22/007
-----
Connected to remote server/host s390labb.pok.ibm.com using port 9993
    
```

Default Application selection panel



# Session Manager for z/OS: Overview....

## End-User Interaction --> [Application Access](#)



```
Session A - [24 x 80]
Session Manager      Menu Panel      27/01/2003 08:24:39
TN32 09141D20      JONES1

Sel      DESCRIPTION      STATUS
---
PF1      CICS TS 2.2 Demo region      Active
PF2      CICS TS 2.2 CICS PM Demo Region 1      Avail
PF3      CICS TS 2.2 CICS PM Demo Region 2      Avail
PF4      CICS TS 2.2 CICS PM Demo Region 3      Avail
PF5      CICS TS 2.2 CICS PM Demo WUI Server      Avail
PF6      CICS TS 1.3 CTG Demo Region      Avail
PF7      TS01 on S01      Active
PF8      Linux instance - Pok      Avail
PF23     Disconnect from Session Manager      CMD
PF24     Logoff from Session Manager      CMD

Escaped from session 1
===>

ESCAPES:  Menu PF12  Bwd PF10  Fwd PF11

MA a 21/053
Connected to remote server/host s390labb.pok.ibm.com using port 9993
```

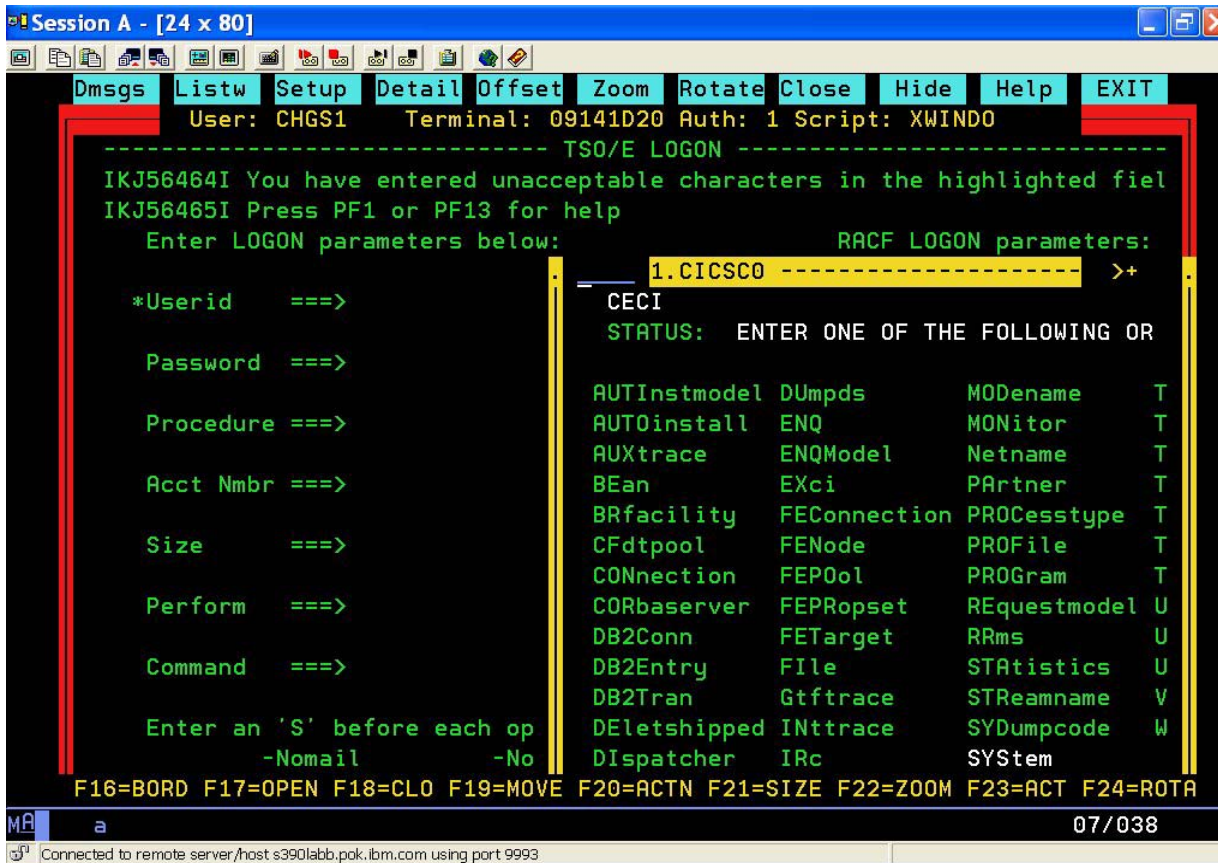
Application selection panel with escape characters changed to PF keys





# Session Manager for z/OS: Overview....

## End-User Interaction --> Windows Feature

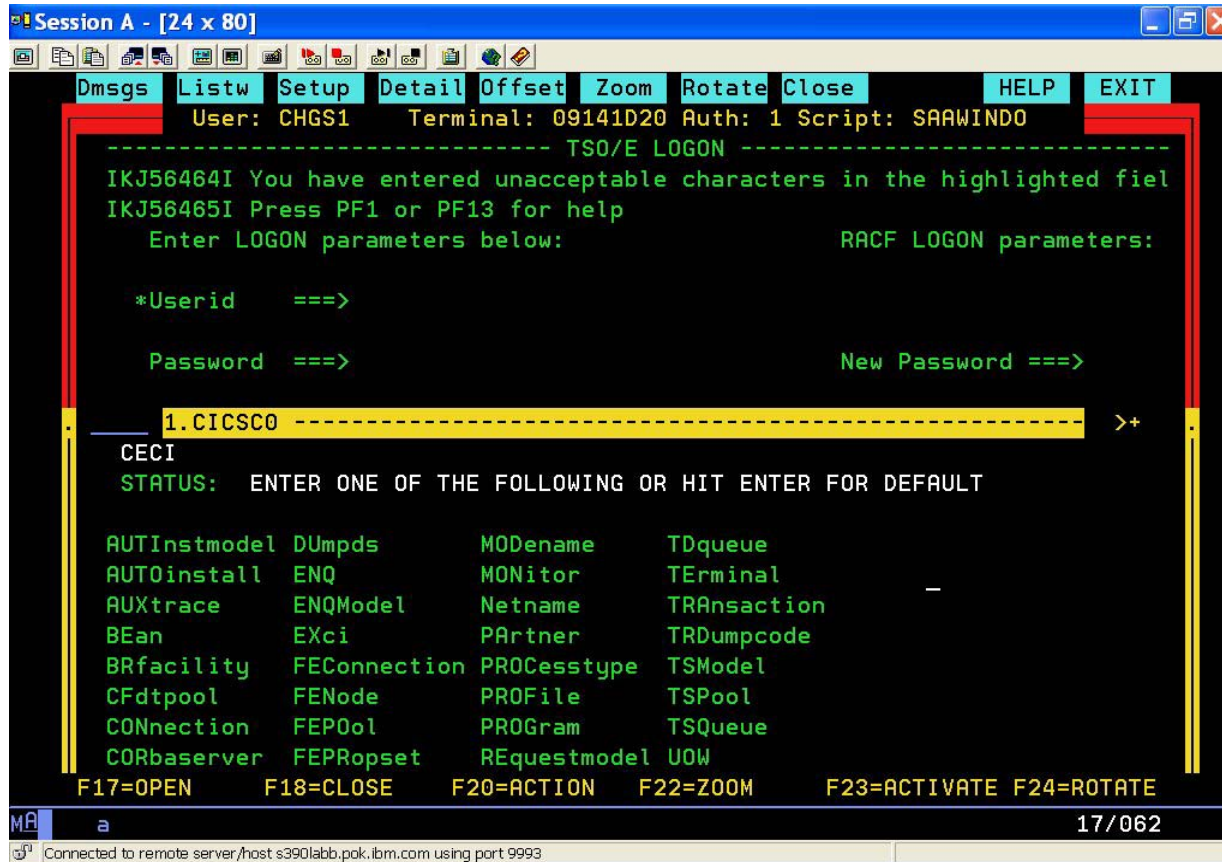


PC type windows



# Session Manager for z/OS: Overview....

## End-User Interaction --> Windows Feature



CUA type windows



## CICS Tools – ISV Replacements

### **CICS Online Transmission Time Optimizer – CICS OTTO**

- Optimize 3270 data streams to increase your system performance

### **CICS VSAM Copy – CICS VC**

- Create consistent point-in-time copies of VSAM files concurrent with business-critical online processing activity

### **CICS VSAM Recovery – CICS VR**

- Automated recovery of lost VSAM data

### **CICS Batch Application Control – CICS BAC**

- Simplify and automate batch access to CICS resources

### **IBM Session Manager – ISM**

- Provide secure, reliable, and easy access to multiple z/OS and OS/390 applications from a single terminal

