



IBM Software Group

CICS Tools – Extending Legacy Applications

Transform your CICS applications

Cornell Keene
AD/CICS Tools Enablement Team
ckeene@us.ibm.com



 business on demand software

Preface

- The following terms are trademarks or registered trademarks of the International Business Machines Corporation in the United States and/or other countries:
 - ▶ CICS, CICS for MVS/ESA, CICS/ESA, CICSplex SM
 - ▶ DB2
 - ▶ DFSMS/MVS
 - ▶ IBM
 - ▶ MQSeries
 - ▶ MVS/ESA
 - ▶ OS/390
 - ▶ RMF, Resource Measurement Facility
 - ▶ S/390, z/OS
 - ▶ WebSphere
- The following terms are trademarks Tivoli Systems, an IBM Company:
 - ▶ Tivoli Management Environment, TME 10
- Java and all Java-based trademarks and logos are trademarks or registered trademarks of Sun Microsystems, Inc. in the United States and/or other countries.



Portfolio Overview

Problem Determination Tools

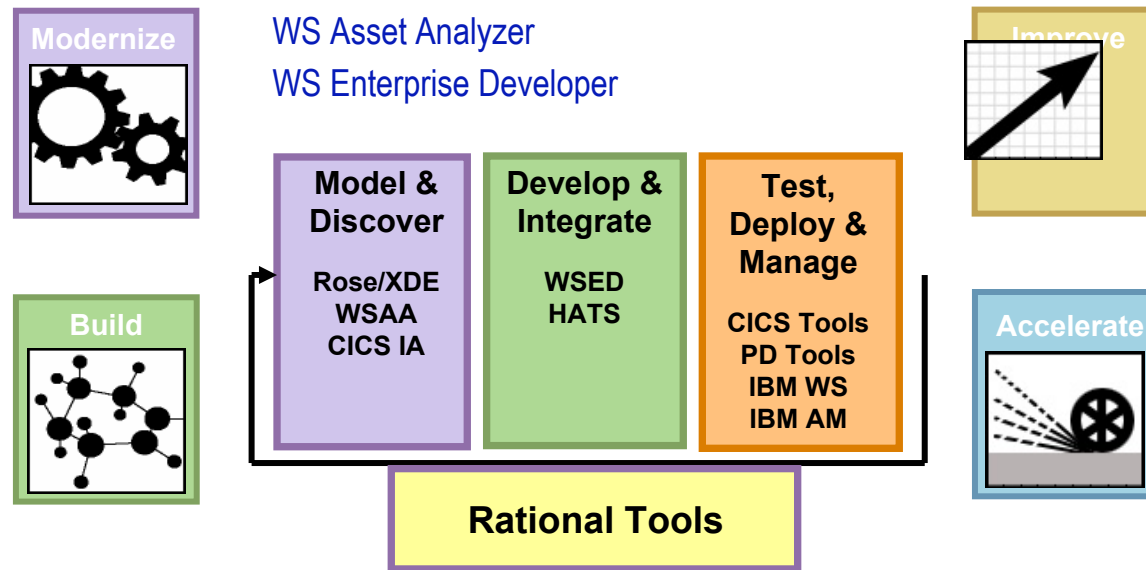
- File Manager
- File Export
- Fault Analyzer
- Debug Tool Utilities
- TicToc
- IBM Application Monitor
- IBM Workload Simulator
- Rational Functional Tester Extension

CICS Tools

- CICS Interdependency Analyzer
- CICS Performance Analyzer
- CICS Business Event Publisher
- CICS VSAM Transparency
- CICS Batch Application Control
- IBM Session Manager
- CICS VSAM Recovery
- CICS VSAM Copy
- CICS OTTO
- CICS Configuration Manager

WAS/z Tools

- WS Application Monitor
- WS Workload Simulator
- WS Asset Analyzer
- WS Enterprise Developer



Host Integration Tools

- Personal Communications
- Host Publisher
- Host On Demand
- Host Access Transformation Server

Runtimes

- WebSphere Application Server
- CICS, IMS, DB2
- Enterprise COBOL/PL/I
- Host Access Transformation Server



Transform your CICS applications

CICS Application Transformation Tools

- **Extend and modernize CICS applications efficiently**
- **Improve end-user productivity**
- **Increase customer satisfaction**



Transform your CICS applications

- **Extend and modernize CICS applications efficiently**

- **Improve end-user productivity**

- **Increase customer satisfaction**

CICS Application Transformation Tools

CICS Business Event Publisher for MQSeries®



Transform your CICS applications

- **Extend and modernize CICS applications efficiently**

- **Improve end-user productivity**

- **Increase customer satisfaction**

CICS Application Transformation Tools

CICS Business Event Publisher for MQSeries®

- Extend CICS applications and associated data to new environments using events, without changing the original application or data



New release: CICS Business Event Publisher for MQSeries V1.2

- **Quick solution to get legacy customer applications to exploit MQSeries functions without the need for Application program changes**
- Integrate legacy applications and data to new environments (CICS, IMS and DB2 events)
- Creates MQPUT messages for MQSeries queue from events and associated information
- Based on user-specified message content rules, Queue names and MQPUT options
- Provides easy to use workstation GUI for selection and rules creation
- Real time action and results
- Offers low cost, low risk integration strategy

Value:

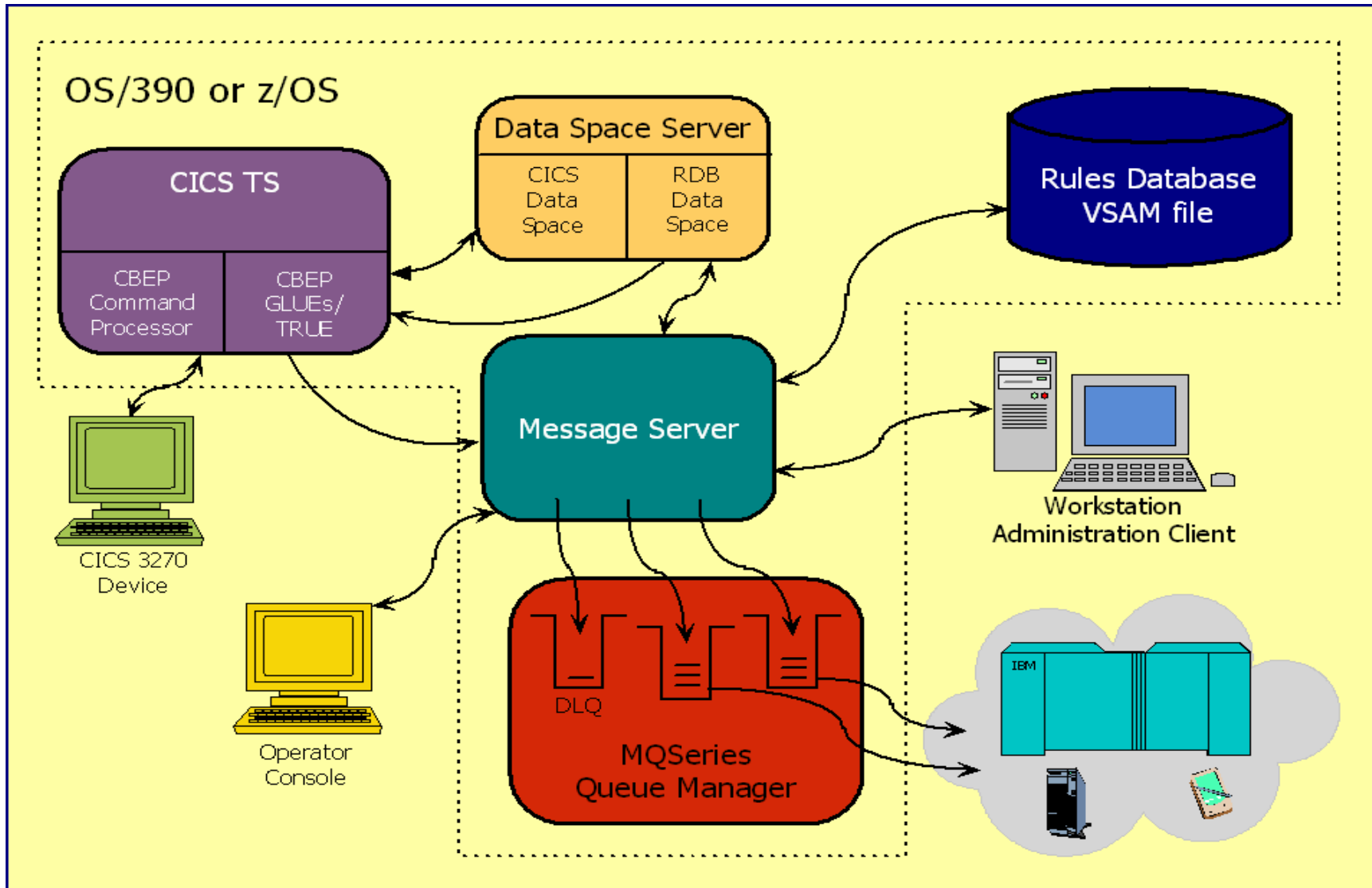
- No change to existing application programs or data
- Extends legacy to new environments

CICS BEP scenarios:

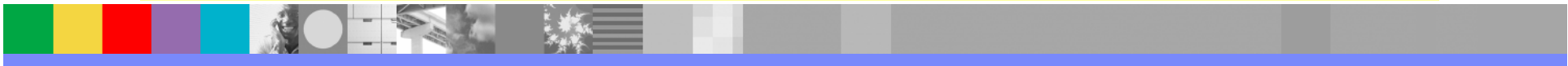
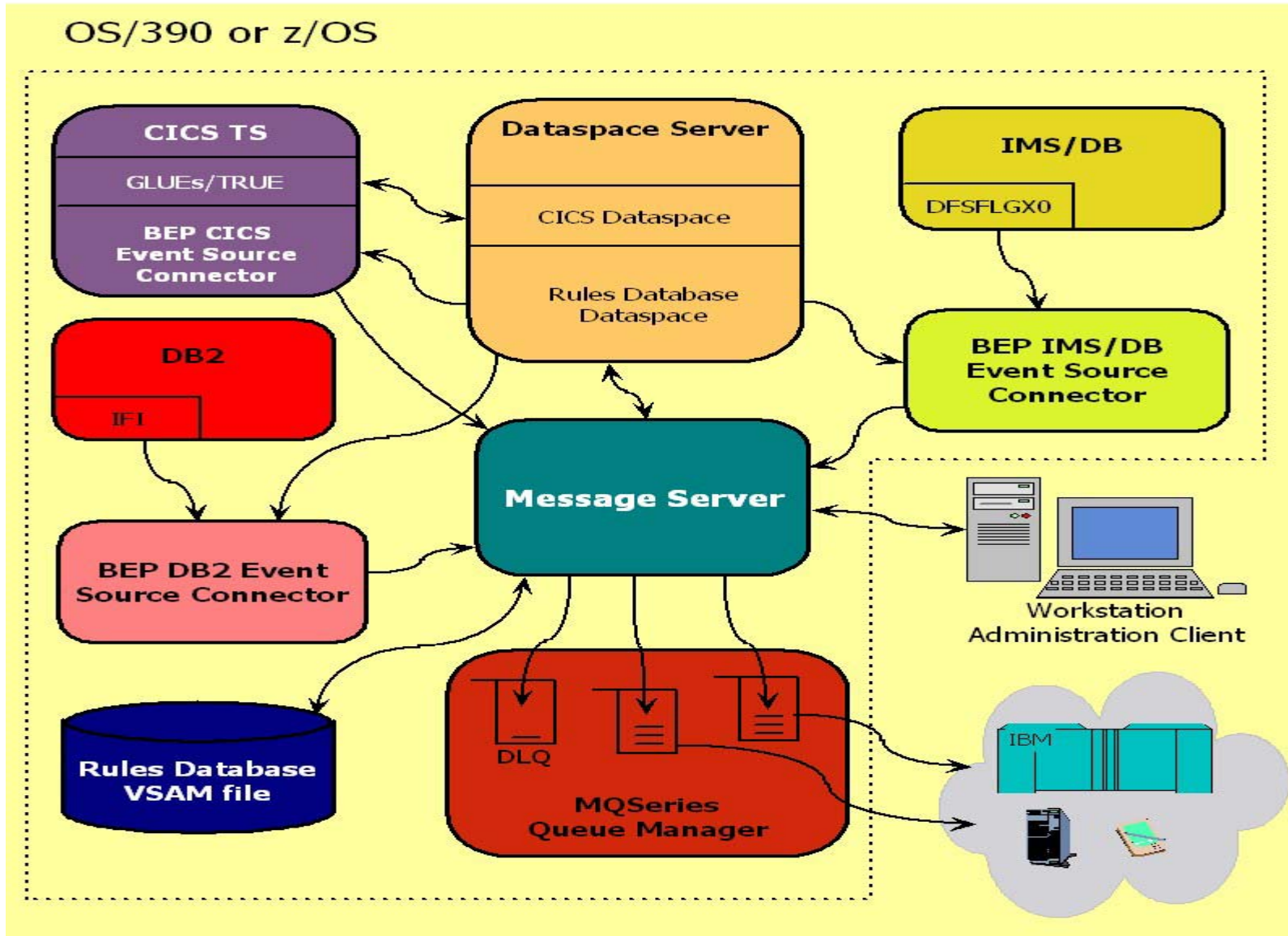
- Event notification – new customer added, account = zero
- Activity Audits – who, what, when is accessing the file?
- Error notification – create message when error detected
- Threshold notification – stock running low
- Automation – removal of manual or latency in business process
- Data source for Message Brokers
- Data transfer
- External logging or notification



V1R1 architecture



V1R2 architecture



IBM CICS Business Event Publisher for MQSeries

File Edit View Help

*CICS Business Event Publisher for MQSeries*TM

Group Lists and Rule Groups

- CICS Business Event Publisher
 - Group Lists
 - Rule Groups

To begin, you may use the toolbar or "File/New" menu option to create new Rule Groups or Group Lists. The same options may be used to create new rules and lists in Rule Groups and Group Lists, respectively.

Once you have created rules and lists, you can work with them by expanding Rule Groups or selecting Group Lists in the tree at the left. Then clicking a specific Rule Group or Group List shows you its members, and double-clicking one of those (or pressing Enter) lets you view the details, edit, delete, or rename it.

Host computer: 192.168.10.100:51577 02/09/2003 12:49 AM Normal Mode

IBM CICS Business Event Publisher for MQSeries

File Edit View Help

CICS Business Event Publisher for MQSeries™

Group Lists and Rule Groups		Group List Name	Date Created	Date Last Modified	Date Last Accessed
CICS Business Event Publisher		PRODUCTION LIST A	11/17/2002 10:18:...	12/25/2002 2:54:1...	02/08/2003 11:12:...
Group Lists		PRODUCTION LIST B	02/08/2003 11:12:...	02/08/2003 11:12:...	02/08/2003 11:12:...
Rule Groups		TEST LIST A	02/08/2003 11:13:...	02/08/2003 11:13:...	02/08/2003 11:13:...

All Group Lists displayed. Host computer: 192.168.10.100:51577 02/08/2003 11:26 PM Normal Mode



The current rule is NEW ORDER

File Help

Save Cancel Clear UserID Set Host Help

CICS Business Event Publisher for MQSeries™

Rule Type Selection Criteria MQPUT Options Message Options Return Options

Select one of the resource types on this page

CAUTION: Changing the Resource Type for a Rule will cause all Resource-dependent values in the Rule to be reset to their default values resulting in the loss of the existing values.

CICS Resources

- File Control (VSAM)
- Temporary Storage Queues
- Transient Data Queues
- Interval Control
- Terminal Control
- Program Control
- Task Initiation/Termination

CICS Transaction Include/Exclude

- Transaction Include
- Transaction Exclude



The current rule is NEW ORDER

File Help

Save Cancel Clear UserID Set Host Help

CICS Business Event Publisher for MQSeries™

Rule Type Selection Criteria MQPUT Options Message Options Return Options

File Name ORDRFILE

Enter Selection Criteria

Selection Criteria Enabled

All fields below are case sensitive

Select by Transaction ID

Include

Exclude

Select by User ID

Include

Exclude

Select by Terminal ID

Include

Exclude

Select by APPLID

Include

Exclude

Advanced Selection Criteria

Intercept These Request Types

WRITE

REWRITE

READ

READ With Update

STARTBR

RESETBR

READNEXT

READNEXT With Update

READPREV

READPREV With Update

ENDBR

DELETE

UNLOCK



Advanced Selection Criteria for NEW ORDER

Resource Name: Resource Type:

Current Selection Criteria

And/Or	Field Name/Type	Index	Offset	Length	OP	Compare to

Datamap Fields

Level	Field name	Occu...	Type	Picture	Usage	Length

Datamap Name:

Field Name	Length	Index	Operator	Compare to Data Type	Compare to
<input type="text"/>	<input type="text"/>	<input type="text"/>	<input type="text"/>	<input type="text"/>	<input type="text"/>

Fields by Offset/Length

Offset	Length	Operator	Compare to Data Type	Compare to
<input type="text" value="0"/>	<input type="text"/>	<input type="text"/>	<input type="text"/>	<input type="text"/>

Create a message on these conditions: Conditions Selected:

NORMAL
 ERROR
 CHANGED

Action:

Enable Complex Selection Criteria



Advanced Selection Criteria for NEW ORDER

Resource Name: ResourceType:

Current Selection Criteria

And/Or	Field Name/Type	Index	Offset	Length	OP	Compare to

Remove and Edit Message Field
 Remove from List

Datamap Fields

Level	Field name	Occu...	Type	Picture	Usage	Length
03	ORDER-DATE-SEC		Numeric: zoned	9(2)	Display	2
02	ORDER-ITEMS	10	Group		Display	54
03	ITEM-NUMBER	10	Numeric: zoned	9(8)	Display	8
03	ITEM-QUANTITY	10	Numeric: binary	S9(4)	Binary (CO...	2
03	ITEM-ON-HAND	10	Numeric: binary	S9(8)	Binary (CO...	4
03	ITEM PRICE	10	Numeric: zoned	9(6)	Display	8

Datamap Name:

 Field Name Length Index Operator Compare to Data Type Compare to

Fields by Offset/Length

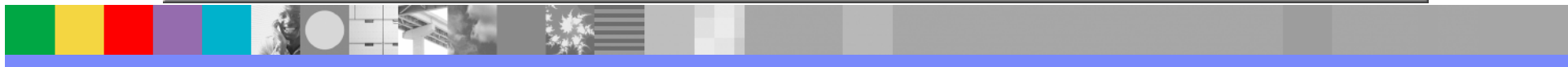
 Offset Length Operator Compare to Data Type Compare to

Create a message on these conditions: Conditions Selected:

NORMAL
 ERROR
 CHANGED

Action:

Enable Complex Selection Criteria



Advanced Selection Criteria for NEW ORDER

Resource Name: Resource Type:

Current Selection Criteria

And/Or	Field Name/Type	Index	Offset	Length	OP	Compare to
	ITEM-ON-HAND	1		4	EQ	0

Datamap Fields

Level	Field name	Occu...	Type	Picture	Usage	Length
02	ORDER-ITEMS	10	Group		Display	54
03	ITEM-NUMBER	10	Numeric: zoned	9(8)	Display	8
03	ITEM-QUANTITY	10	Numeric: binary	S9(4)	Binary (CO...	2
03	ITEM-ON-HAND	10	Numeric: binary	S9(8)	Binary (CO...	4
03	ITEM-PRICE	10	Numeric: zoned	9(6)...	Display	8
03	ITEM COMMENTS	10	Alphanumeric	V(32)	Display	32

Datamap Name:

Fields by Offset/Length

Create a message on these conditions: Conditions Selected:

NORMAL
 ERROR
 CHANGED

Action:

Enable Complex Selection Criteria



The current rule is NEW ORDER

File Help

Save Cancel Clear UserID Set Host Help

CICS Business Event Publisher for MQSeries™

Rule Type Selection Criteria **MQPUT Options** Message Options Return Options

Queue Name
new.orders.queue

Queue Manager Name

Specify Message Descriptor Options (MQMD_*)

Specify Put Message Options (MQPMD_*)



IBM CICS Business Event Publisher for MQSeries

File Edit View Help

CICS Business Event Publisher for MQSeries™

Group Lists and Rule Groups

- CICS Business Event Publisher
 - Group Lists
 - Rule Groups

To begin, you may use the toolbar or "File/New" menu option to create new Rule Groups or Group Lists. The same options may be used to create new rules and lists in Rule Groups and Group Lists, respectively.

Once you have created rules and lists, you can work with them by expanding Rule Groups or selecting Group Lists in the tree at the left. Then clicking a specific Rule Group or Group List shows you its members, and double-clicking one of those (or pressing Enter) lets you view the details, edit, delete, or rename it.

Host computer: 192.168.10.100:51577

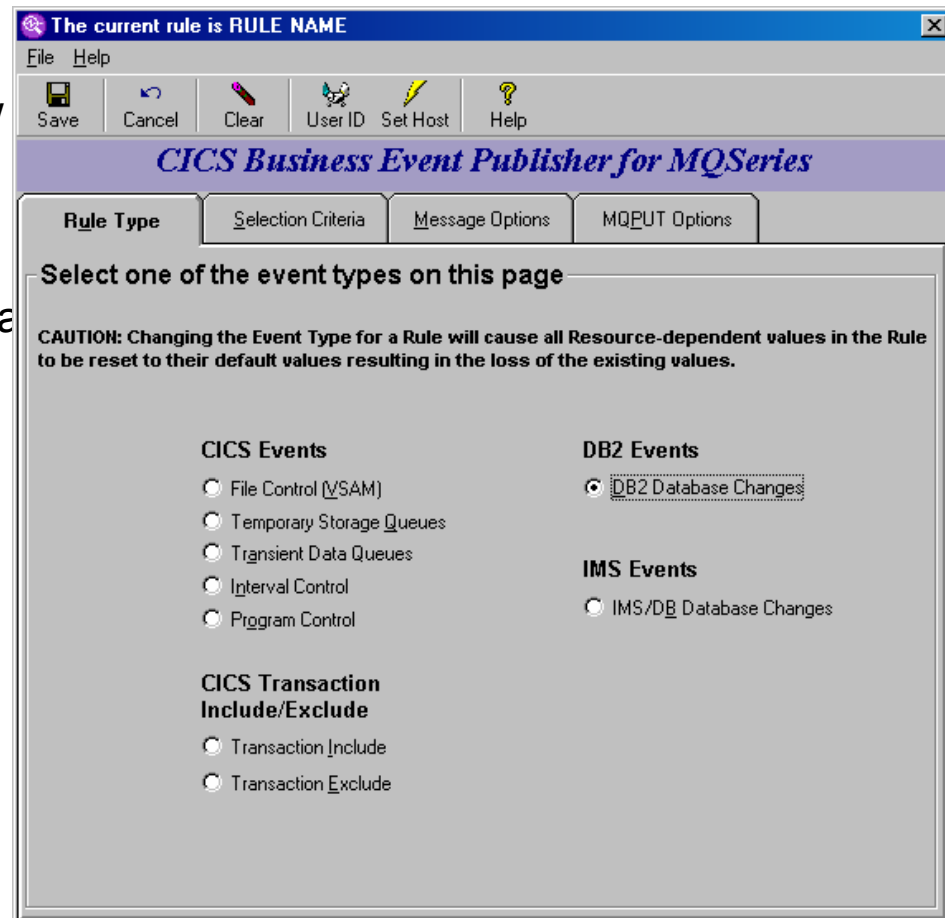
02/09/2003

12:49 AM

Normal Mode

Rule Type Tab

- DB2 and IMS show up as new categories
- User should select DB2 Database Changes
- Then click on Selection Criteria tab



Selection Criteria Tab

- Selection Criteria is DB2 specific
- Can target INSERT, UPDATE and/or DELETE statements
- User may enter table name or click on Select a table name from a list

The screenshot shows a software window titled "The current rule is RULE NAME" with a menu bar (File, Help) and a toolbar (Save, Cancel, Clear, User ID, Set Host, Help). The main title is "CICS Business Event Publisher for MQSeries". Below the title are four tabs: "Rule Type", "Selection Criteria" (selected), "Message Options", and "MQPUT Options".

The "Selection Criteria" tab contains the following elements:

- A "Table Name" field with a dropdown arrow and a button labeled "Select a table name from a list".
- A section titled "Enter Selection Criteria" containing:
 - A checkbox for "Selection Criteria Enabled".
 - Multiple selection criteria, each with "Include" and "Exclude" checkboxes and a text input field:
 - Select by Correlation ID
 - Select by User ID
 - Select by Plan Name
 - Select by Connection Name
 - Select by Thread Type
 - Select by DB2 Subsystem
 - Select by Data Sharing Group
 - Select by Network ID
 - Select by LU Name
 - An "Advanced Selection Criteria" button.
- A section titled "Intercept These Request Types" containing checkboxes for "Insert", "Update", and "Delete".

Show Available Tables

DB2 Subsystem Browse host for DB2 Subsystem names...

Table Owner

Table name Browse host for table names...

Selected table

Accept Selected Table Name Cancel

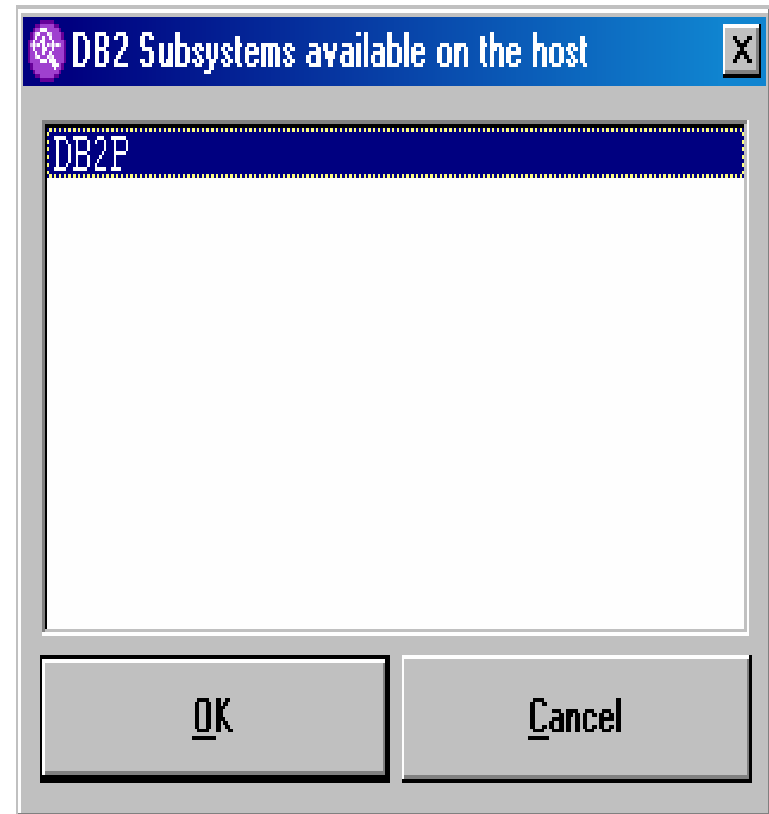
Enter or edit the DB2 subsystem name, owner and table name pattern

- User can enter patterns to list possible candidates
- User can manually enter DB2 subsystem name or click on Browse host for DB2 subsystem names

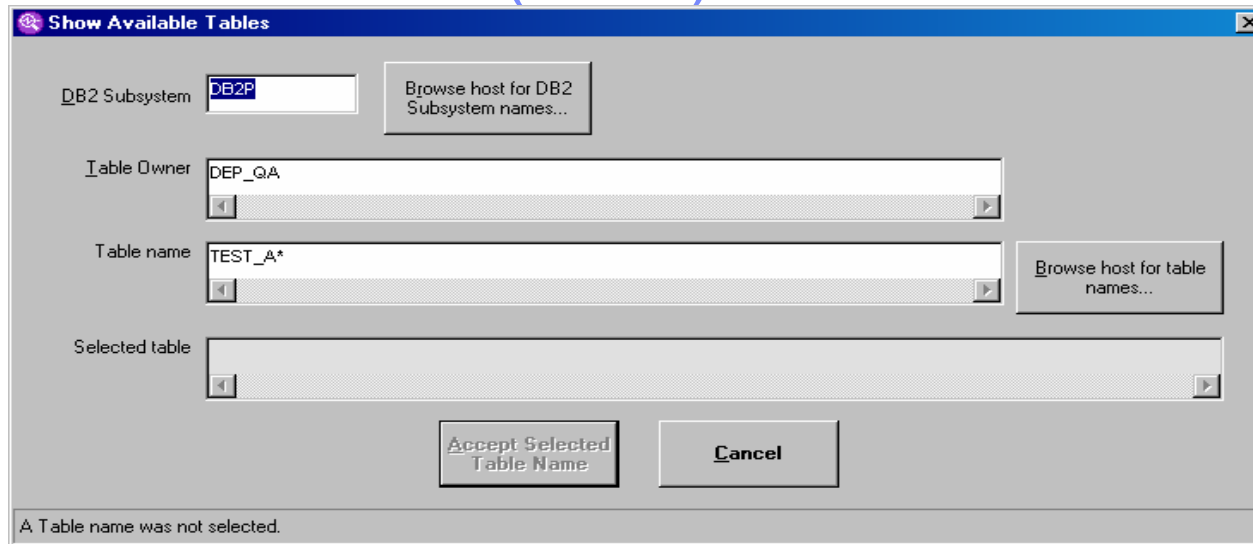


DB2 subsystems available on host

- This presents the available DB2 subsystems which are being monitored by an Event Processor
- Select the desired entry and click OK



Show Available Tables (cont.)



DB2 Subsystem: DB2P

Table Owner: DEP_QA

Table name: TEST_A*

Selected table:

Buttons: Accept Selected Table Name, Cancel

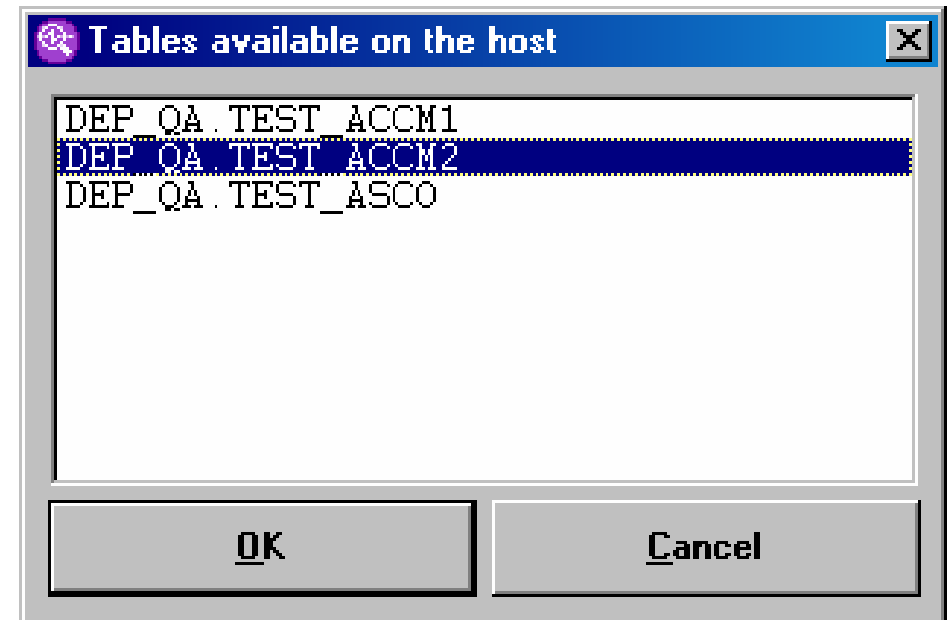
Status: A Table name was not selected.

- Owner ID and table name accepts wildcards
 - ▶ ? for single character match
 - ▶ * for trailing character match
- Click on Browse host for table names

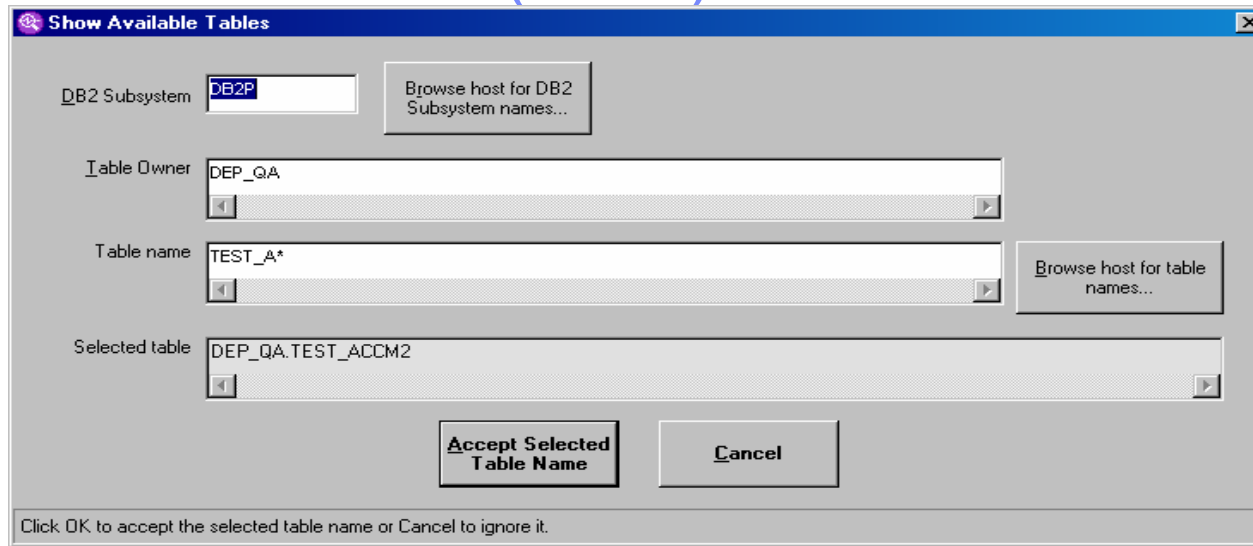


Tables available on the host

- This lists the tables which match the specified pattern
 - ▶ Limited to first 200 matches
- Select the desired table name and click OK



Show Available Tables (cont.)



Show Available Tables

DB2 Subsystem:

Table Owner:

Table name:

Selected table:

Click OK to accept the selected table name or Cancel to ignore it.

- Pattern process can be repeated until desired table is found
- Once the desired table name has been selected, simply click Accept Selected Table Name



Selection Criteria Tab (cont.)

- Selecting Selection Criteria Enabled allows specification of DB2 specific qualifiers
 - ▶ Include/Exclude is the same as for CICS
 - ▶ ? and * are valid wildcards
- Click Advanced Selection Criteria to specify column level checks

The screenshot shows a software window titled "The current rule is RULE NAME". The window has a menu bar with "File" and "Help", and a toolbar with icons for Save, Cancel, Clear, User ID, Set Host, and Help. Below the toolbar is a title bar for "CICS Business Event Publisher for MQSeries". The main area has several tabs: "Rule Type", "Selection Criteria" (which is active), "Message Options", and "MQPUT Options".

In the "Selection Criteria" tab, there is a "Table Name" field containing "DEP_QA.TEST_ACCM2" and a dropdown arrow. To the right of this field is a button labeled "Select a table name from a list".

Below the table name field is a section titled "Enter Selection Criteria". It contains a checked checkbox labeled "Selection Criteria Enabled". Underneath, there are several groups of options for selecting or excluding records based on various criteria:

- Select by Correlation ID:** Includes "Include" and "Exclude" checkboxes with text input fields.
- Select by User ID:** Includes "Include" and "Exclude" checkboxes with text input fields.
- Select by Plan Name:** Includes "Include" and "Exclude" checkboxes with text input fields.
- Select by Connection Name:** Includes "Include" and "Exclude" checkboxes with text input fields.
- Select by Thread Type:** Includes "Include" and "Exclude" checkboxes with a dropdown menu.
- Select by DB2 Subsystem:** Includes "Include" and "Exclude" checkboxes with text input fields.
- Select by Data Sharing Group:** Includes "Include" and "Exclude" checkboxes with text input fields.
- Select by Network ID:** Includes "Include" and "Exclude" checkboxes with text input fields.
- Select by LU Name:** Includes "Include" and "Exclude" checkboxes with text input fields.

At the bottom of the "Enter Selection Criteria" section is a button labeled "Advanced Selection Criteria".

On the right side of the window, there is a section titled "Intercept These Request Types" with three checkboxes: "Insert", "Update", and "Delete", all of which are currently unchecked.



Advanced Selection Criteria

- Looks similar to CICS
- Data maps replaced by columns for selected table
- Click on Download Table Columns to populate the column list

Advanced Selection Criteria for RULE NAME

Table Name: DEP_GA.TEST_ACCM2 Type: DB2 Database Changes

Current Selection Criteria

And/Or	Column Name	Length	OP	Compare to

Move Up Remove and Edit Message Field
Move Down Remove from List

Table Columns

Column Name	Type	Scale	Nullable	Length

Download Table Columns

AND OR Column Length Operator Compare to Data Type Compare to Add to Criteria

Action: Create Message

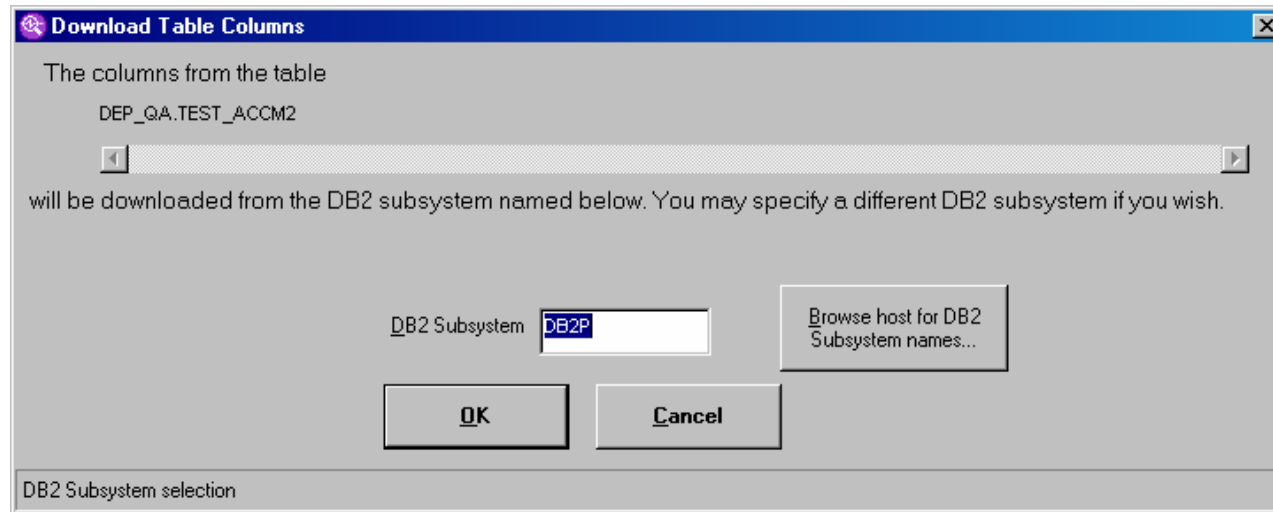
Enable Advanced Selection Criteria

OK Cancel

Host: 10.5.16.11:35678 CP: US English - 037 (P) | Normal Mode



Download Table Columns



- This allows the selection of the DB2 from which the column list is to be obtained
- The rule is not DB2 specific unless specified as such in the Selection Criteria
- Click OK to use the indicated DB2 subsystem



Advanced Selection Criteria (cont.)

- Selecting a column allows an entry to be built for that column
- Note the additional DB2 specific operators
 - ▶ IsNull
 - ▶ IsNotNull
 - ▶ Only allowed if the column has a Y in the Nullable column

Advanced Selection Criteria for RULE NAME

Table Name: DEP_GA.TEST_ACCM2 Type: DB2 Database Changes

Current Selection Criteria

And/Or	Column Name	Length	OP	Compare to

Table Columns

Column Name	Type	Scale	Nullable	Length
COL01	CHAR		Y	5

Download Table Columns

AND OR Column Length Operator Compare to Data Type Compare to Add to Criteria

EQ
GE
LE
NE
GT
LT
IsNull
IsNotNull

Create Message

Enable Advanced Selection Criteria

OK Cancel

Table columns download complete. Host: 10.5.16.11:35678 CP: US English - 037 (P) | Normal Mode



Advanced Selection Criteria (cont.)

- This definition will create a message when COL01 is NULL or when COL01 is equal to 'DAVID'
- Click OK when finished with Advanced Selection Criteria

Advanced Selection Criteria for RULE NAME

Table Name: DEP_GA.TEST_ACCM2 Type: DB2 Database Changes

Current Selection Criteria

And/Or	Column Name	Length	OP	Compare to
	COL01	5	IsNull	
OR	COL01	5	EQ	DAVID

Table Columns

Column Name	Type	Scale	Nullable	Length
COL01	CHAR		Y	5

Download Table Columns

AND Column Length Operator Compare to Data Type Compare to Add to Criteria

OR

Action: Create Message

Enable Advanced Selection Criteria

OK Cancel

Table columns download complete. Host: 10.5.16.11:35678 CP: US English - 037 (P) | Normal Mode



Transform your CICS applications

- **Extend and modernize CICS applications efficiently**

- **Improve end-user productivity**

- **Increase customer satisfaction**

CICS Application Transformation Tools

CICS Business Event Publisher for MQSeries®

- Extend CICS applications and associated data to new environments using events, without changing the original application or data

CICS VSAM Transparency



Transform your CICS applications

- **Extend and modernize CICS applications efficiently**

- **Improve end-user productivity**

- **Increase customer satisfaction**

CICS Application Transformation Tools

CICS Business Event Publisher for MQSeries®

- Extend CICS applications and associated data to new environments using events, without changing the original application or data

CICS VSAM Transparency

- Enable VSAM to DB2 migration without rewriting applications



Customer business issue

- Strategic decision made to migrate VSAM to DB2
 - ▶ Modernise existing CICS applications
 - ▶ Build new apps that need that data in a RDMS
 - ▶ Compliance with Corporate or legal requirements

BUT

- Project on hold
 - ▶ CICS applications need to be rewritten to talk to DB2
 - ▶ time
 - ▶ resource
 - ▶ \$\$
- Pain!!
 - ▶ project delivery schedule not met
 - ▶ Project costs spiral – hire AD resource



VSAM based applications

- VSAM is not designed for open data access (i.e. management reporting, analytics)
- VSAM data does not easily integrate with data from DB2 and other systems
- VSAM is not easily accessible from other platforms
- VSAM is not designed to support 24*7 mixed online and batch workloads
- Maintenance and re-organization tools are lacking the richness of DBMS tools



Why migrate data to DB2?

- 24x7 availability – batch and online sharing
- Integration with new applications based on DB2 technology, such as online and e-business systems
- Running ad hoc queries
- Ability to perform data analysis
- Creating visual information, such as executive dashboards
- Exploitation of database maintenance tools



IBM's solution – CICS VSAM Transparency

A tool which allows migration of data from VSAM to DB2 without the need to rewrite CICS/VSAM applications



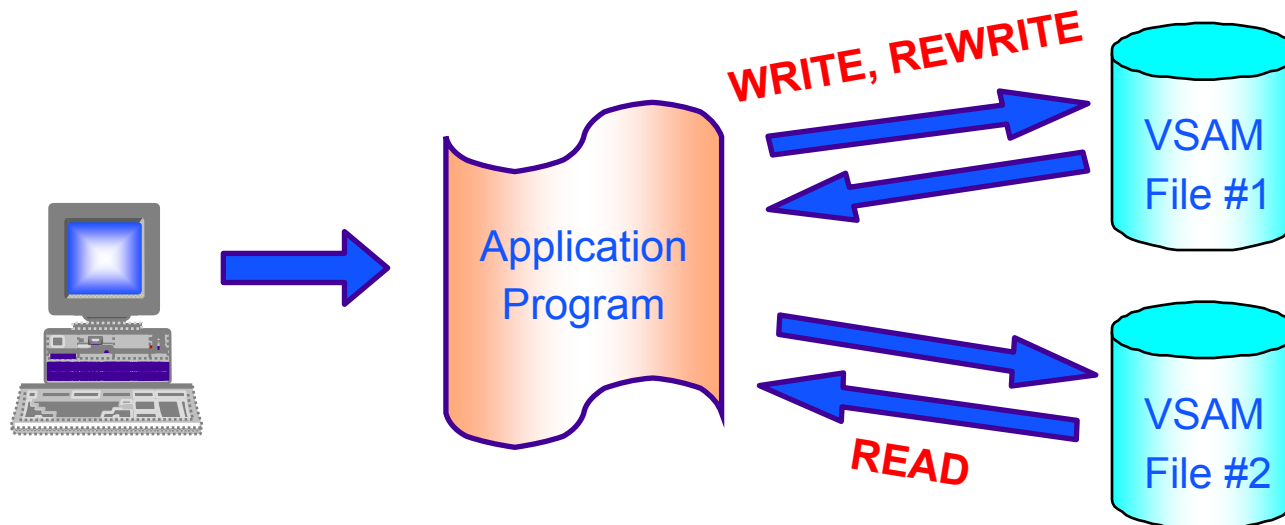
What is CICS VT?

- **Quick solution to get legacy customer applications to exploit DB2 functions without the need for Application program changes**
- Migrates legacy VSAM files to DB2 without changing application programs
- Completely separate from application program
- Transparent access to data in DB2
- CICS and batch programs access data in DB2 under the control of CICS VT
- Migrated data can be accessed by SQL by new programs
- Existing programs enhanced using SQL
- Lower risk migration strategy
- Migration of individual VSAM files as required
- Enabling new applications to be fully DB2 technology-based
- Preserving investments



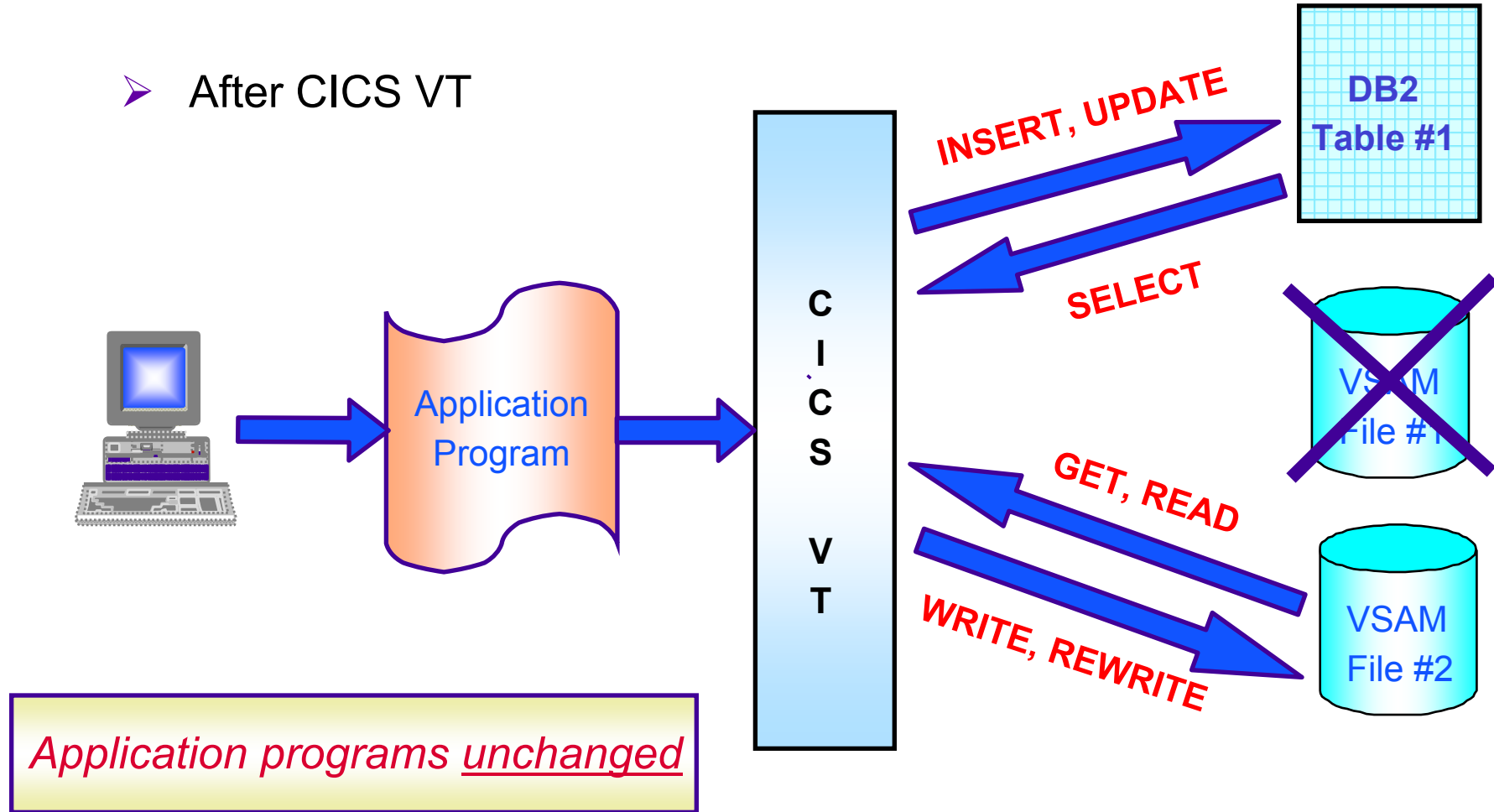
How does CICS VSAM Transparency works?

➤ Before CICS VT



How does CICS VSAM Transparency works (continued)?

➤ After CICS VT



CICS VT HIGHLIGHTS

- Completely separate from application program
- Transparent access to data in DB2
- 100% static SQL
- Migrate on a file by file basis
- Single copy of data
- Data can be re-engineered
 - Same data returned to VSAM programs
 - Enhanced data available using SQL



CICS VT COMPONENTS

- Mapping component
 - Establishes relationship between VSAM record layout and DB2 row
- Data migration component
 - Utilities to migrate data to DB2 and re-engineer if required
- Run time component
 - Intercepts application calls to VSAM data sets migrated to DB2



TYPICAL DB2 TABLE DESIGN

02 ITEM-NUMBER PIC X(6).		CREATE TABLE VID_ITEM
02 ITEM-NAME PIC X(12).		(ITEM_NUMBER CHAR(6)
03 ITEM-COLOUR PIC X(6).		,ITEM_NAME CHAR(12)
03 ITEM-WEIGHT PIC X(4).		,ITEM_COLOUR CHAR(6)
03 ITEM-COST PIC S99999V99 COMP-3.		,ITEM_WEIGHT CHAR(4)
02 ITEM-REORDER-QUANTITY PIC S999.	↔	,ITEM_COST DEC(7,2)
02 ITEM-SUPPLIER-CODE PIC X(3).		, ITEM_REORDER_NO SMALLINT
02 ITEM-DATE-FIRST-SHIP PIC S9(9) COMP-3.	↔	,ITEM_SUPP_CODE CHAR(3)
02 ITEM-SHELF-LIFE PIC X(2).		, ITEM_DATE_FSHIP DATE
02 ITEM-DESCRIPTION PIC X(35) .		,ITEM_SHELF_LIFE CHAR(2)
		,ITEM_DESCRIPTION CHAR(35)

- Numeric fields re-engineered
- Date field re-engineered



WHY USE CICS VT ?

- Lowest risk migration methodology
 - One file at a time
 - No application program changes
 - Extensive re-engineering capabilities
 - Complete set of migration tools
 - Automated mapping facility



CICS VT investment case scenario

Assumptions:

Typical application consists of 100 programs
The application calls 10 VSAM files
Rewrite and test a CICS program = 3 days
Map and migrate VSAM file to SQL/DB2 = 3 days

Without CICS VT

Customer wants to migrate a CICS/VSAM app to CICS/DB2
 $(100 \times 3) + (10 \times 3) = \mathbf{330 \text{ days}}$ of AD time for one application
Other knock on costs e.g. app downtime
Customer will have done total costing of VSAM to DB2 migration

With CICS VT

Customer wants to migrate VSAM data to DB2 but leave CICS app untouched
Assume 50% of application rewrite is testing = 150 days
Assume 7 of the 10 VSAM files are single record and the rest have 3 records each...mapping/migration takes one day per single record view and 3 days per multiple record view file – therefore 16 days of mapping/migration (7 + 9)
So with CICS VT it's **166 days** effort in total
Assuming customer wants to test *everything*

Conclusion

Saving of 164 days = c. \$84K of AD effort
CICS VT could pay for itself after just 1 app
Could be even quicker if user decides not to test everything



Further Info on CICS VT

- CICS VT web page

 - *www.ibm.com/cics/vt*

- Publications

 - *www.ibm.com/cics/library*

 - CICS VT data sheet – G244-7285

 - CICS VT user guide – SC34-6343



Transform your CICS applications

- **Extend and modernize CICS applications efficiently**

- **Improve end-user productivity**

- **Increase customer satisfaction**

CICS Application Transformation Tools

CICS Business Event Publisher for MQSeries®

- Extend CICS applications and associated data to new environments using events, without changing the original application or data

CICS VSAM Transparency

- Enable VSAM to DB2 migration without rewriting applications

