



# CICS Transaction Server V2.3 or 3.1 Technical Overviews

Guy Shevik

## Acknowledgements

**The following are trademarks of International Business Machines Corporation in the United States, other countries, or both: IBM, CICS, CICS/ESA, CICS TS, CICS Transaction Server, DB2, MQSeries, OS/390, S/390, WebSphere, z/OS, zSeries, Parallel Sysplex.**

**Java, and all Java-based trademarks and logos, are trademarks of Sun Microsystems, Inc. in the United States, other countries, or both.**

**Microsoft, Windows, Windows NT, and the Windows logo are trademarks of Microsoft Corporation in the United States, other countries, or both.**

**Other company, product, and service names and logos may be trademarks or service marks of others.**

# Session Agenda

- **CICS TS 2.3 Overview / Enhancements**
  - IBM Java Virtual Machine (JVM)
  - Enterprise Java Beans
  - Application Development
  - Enterprise Management
  - Miscellaneous Changes
- **CICS TS 3.1 Overview / Enhancements**
  - Strategic Themes
  - Web Services
  - OTE exploitation
  - CPSM Web User Interface
  - Removal of obsolete functions
- **Which CICS Release should I choose?**

# CICS TS 2.3 Overview / Enhancements

# IBM Java Virtual Machine (JVM)

## ■ Continuous JVM

- Greater transaction throughput and lower CPU
- Three levels of reusability – Controlled by REUSE option in JVM profile
  - Single Use REUSE=NO
  - Resettable REUSE=RESET
  - Continuous REUSE=YES

## ■ Shared Class Cache

- JVM's start up more quickly and lower storage requirements
- Created using –Xjvmset option
- JVM's can share a single cache of class files
- Replaces system heap and application class system heap

## ■ Miscellaneous Changes for JVM

- Dedicated Storage Monitor
- Can now run in User Key
- Statistics and INQUIRE JVM

## Enterprise Java Beans

- **Provides SPI and CEMT commands to enable/disable CorbaServer**
  - Allows CICS to remain active
  - CPSM recognizes DISABLED state
- **CTG includes ECI Resource Adapter (CCI)**
  - Standard CCI interface using COMMAREA's
  - Written in any CICS support Language
  - May not perform terminal input/output
- **Improved Authentication / Encryption for SSL**
  - IIOp can use asserted identity authentication
  - HTTP/IIOp can select level of encryption
- **EJB Trace enhancements**
  - New SPI commands
    - INQUIRE WORKREQUEST
    - SET WORKREQUEST

## Java Application Support

- **Supports CICS applications written in Java**
  - Allows CICS Java programs to integrate and interoperate with CICS programs written in any other language
  - May be invoked as stand-alone transactions, as Session Beans or as CORBA objects
  
- **Access to existing programs and data**
  - CICS services accessed by using JCICS classes

## Java Application Support...

### ■ CICS Java Classes

- Provide access to CICS services using Java programming model
  - File Control
  - Program Control
  - Temporary Storage
  - Document API
  - APPC
  - Abend Handling
  - Interval Control
  - Task Control
  - Transient Data
  - Web API
  - Limited 3270 Terminal Control
  - Diagnostics
- No requirement for CICS translator

### ■ Support for DB2

- SQLJ and JDBC support
  - Compatible with current CICS DB2 support
  - Uses the existing CICS/DB2 attach



# Application Development

## ■ Improved Interactive Debugging

- Support for debuggers
  - Work-station based
    - WSED 5.0.1 or later
    - WSAD 5.0.1 or later
  - Host-based
    - Debug Tool 3.1 with UQ77541 or later
  - Web-based interface
    - Microsoft Internet Explorer 6.0
    - Netscape Navigator 7.0
    - Mozilla 1.4

## Application Development...

### ▪ **JCICS Support for Web-aware applications**

#### – API now supports CICS Commands

- DOCUMENT CREATE
- DOCUMENT INSERT
- DOCUMENT RETRIEVE
- DOCUMENT SET
- EXTRACT CERTIFICATE
- EXTRACT TCPIP
- EXTRACT WEB
- WEB READ
- WEB WRITE
- WEB SEND
- WEB RECEIVE
- WEB RETRIEVE
- WEB STARTBROWSE
- WEB READNEXT
- WEB ENDBROWSE
- WEB EXTRACT

# Enterprise Management

- **Dynamic workload management LINK3270 Bridge**
  - CPSM workload balancing
  - CPSM workload separation
- **CICSplex System Manager Web User Interface**
  - Introduces Create, Update and Remove actions
  - Enhanced security for views/menus with audit trail
  - Enhanced starter set of views/menus

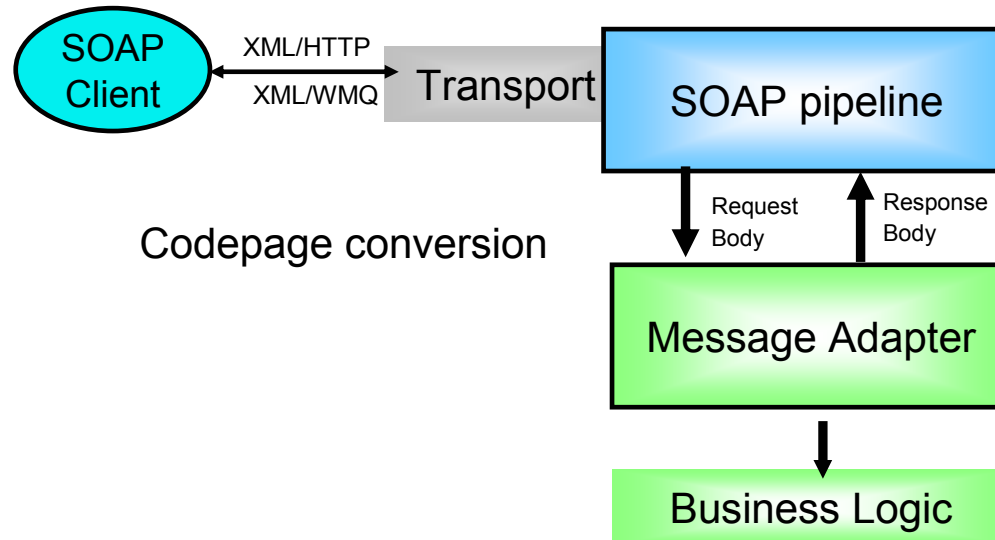
## Miscellaneous Changes

- **TCP/IP address of VTAM autoinstalled terminals which connect via TELNET 3270**
- **Improved statistics utility program DFHSTUP**
  - Customizable reports
- **VS COBOL II, OS PL/I and C/370 runtimes have been removed**
- **CEDA transaction supports mixed case attributes**
- **Supports enhanced DB2 restart-light capability (DB2 V8)**
- **Extended threadsafe EXEC CICS commands**
- **Link3270 bridge supports the ACCUM option**
  - EXEC CICS SEND MAP, SEND TEXT and SEND CONTROL commands

# SOAP for CICS feature

## Why process SOAP in CICS?

- ▶ Easily and efficiently reuse CICS assets from SOAP clients
  - drive existing CICS programs with user supplied XML<->COMMAREA mapping
  - Supports IBM WSED generated code for mapping
- ▶ Performance focused
- ▶ Language neutral approach, works for COBOL, C and Java
- ▶ Synergy with WebSphere and industry direction for Web Services



## SOAP for CICS

- Transport
- Envelope parsing
- URI mapping
- Envelope building

## COBOL code

- generated by WSED

## SOAP for CICS feature...

- **Enables CICS to be a SOAP 1.1 server and client**
  - SOAP over HTTP uses the proven and easy to use CICS Web support, incl. SSL
    - CICS TS V2 required to initiate outbound HTTP
  - SOAP over WebSphere MQ provides guaranteed delivery
  - Simple SOAP processing node - limited SOAP header processing
- **SOAP for CICS optional feature**
  - Free orderable feature with CICS TS V2.2 and V2.3
  - Inbound and outbound HTTP support
  - Fully supported for production use by normal IBM CICS service
- **SOAP for CICS SupportPac CA1M**
  - Free download from [ibm.com/software/hfp/cics/soap/index.html](http://ibm.com/software/hfp/cics/soap/index.html)
  - Requires CICS TS V1.3 or above
  - Supplied AS-IS and unsupported although there is a public newsgroup
- **Requirements**
  - OS/390 V2R10 LE with APAR PQ65085 or above
  - Some means to parse XML eg. Enterprise COBOL or Enterprise PL/I in user program

# CICS TS 3.1 Overview / Enhancements

## CICS TS Version 3 Strategic Themes

- **e-Business Access to CICS Applications**

Enable the re-use of CICS applications within e-Business scenarios, via standard APIs and protocols

- **Application Modernization**

Enable the enhancement of existing applications, and construction of new applications, using contemporary programming languages, constructs and tools

- **Enterprise Management**

Enable the effective management of large runtime configurations via modern user interfaces



# CICS Transaction Server Version 3 Highlights

|                     | e-business<br>Access to CICS  | Application<br>Modernization   | Enterprise<br>Management  |
|---------------------|---|--|---|
| <b>CICS TS V3.1</b> | Web Services<br>- SOAP 1.2<br>- Configurable pipelines<br>Web Services for CICS tooling<br>HTTP 1.1 support<br>- Easier setup with URIMAPs<br>Outbound HTTP API<br>Transport Layer Security<br>256-bit encryption<br>Increased max SSL connections<br>CICS Integrator Adapter runtime | OTE Exploitation<br>- Threadsafe WEB commands<br>- XPlink for C & C++ programs<br>- SSL connection management<br>LE Main for assembler programs<br>Container and channels<br>Codepage conversion<br>enhancements<br>Architectural patterns<br>- "Example" Web Service app<br>IBM SDK for z/OS, Java 2<br>Technology Edition V1.4.2 | CPSM WUI<br>- User favorites<br>- Group profiles<br>- Result set warnings<br>- 2 column views<br>Batchrep enhancements<br>Eclipse based Info Center |

## HTTP Enhancements

- Support for HTTP in CICS has been extended
  - Compliant with the HTTP/1.1 specification
    - Date and time formats
    - Persistent Connections
    - Pipelining and Chunking of messages
  
- Codepage Conversions
  - CICS will use conversion services provided by z/OS support for Unicode
    - Convert character data between UTF-8 or UTF-16 and any of the currently supported EBCDIC codepages
  - Codepage conversions can be specified using:
    - EXEC CICS WEB commands
    - An analyzer program
    - A URIMAP definition

# HTTP Enhancements...

## ▪ **New URIMAP resource definition**

- Specifies how CICS is to treat the request
  - Server: inbound request
  - Client: outbound request
  - Pipeline: web service request
- Determine type of processing for inbound requests (Usage=SERVER)
  - Dynamic Application response
  - Redirection
  - Static response

## ▪ **Web API Commands**

- EXEC CICS CONVERTTIME
  - Converts HTTP formats to ABSTIME
- EXEC CICS FORMATTIME
  - Converts ABSTIME to HTTP format
- EXEC CICS WEB OPEN
  - Opens a session to a remote server
- EXEC CICS WEB CONVERSE
- EXEC CICS WEB CLOSE
  - Close a session with a remote server
- EXEC CICS WEB PARSE URL
  - Breaks down URL string into: scheme, host, port, path, and query string

## Security Enhancements...

- **Support for Transport Layer Security (TLS)**
- **Support for mixed case passwords**
- **Cipher suites**
  - Support for AES Cipher suites (128-bit and 256-bit)
  - Specification of minimum and maximum encryption level
- **Changes to revocation processing**
  - EXEC CICS VERIFY processing
  - Certificate revocation lists
- **Performance Enhancements**
  - SSL Caching support
  - Support for increased number of secure connections

# Enhanced Inter-program Data Transfer

- **New CICS programming constructs:**
  
- **Container**
  - Named block of data designed for passing information between programs
    - “Named” COMMAREAs
  - No CICS enforced size limitation
    - Channels are stored above the line but below the bar
  - Multiple containers can be passed between programs
  
- **Channel**
  - A group of Containers
    - No limit on the number of Containers in a Channel
  - Non-persistent
    - Non-recoverable resource
  - Specified on LINK, XCTL, START and RETURN commands
    - Only one channel can be passed
    - Mutually exclusive with COMMAREA

## Enhanced Inter-program Data Transfer...

- **New CICS commands and options:**
  - EXEC CICS PUT CONTAINER CHANNEL
  - EXEC CICS GET CONTAINER CHANNEL
  - EXEC CICS MOVE CONTAINER TOCHANNEL
  - EXEC CICS DELETE CONTAINER CHANNEL
  
  - EXEC CICS STARTBROWSE CONTAINER CHANNEL
  - EXEC CICS GETNEXT CONTAINER (data-area)
  - EXEC CICS ENDBROWSE CONTAINER
  
  - EXEC CICS ASSIGN CHANNEL
  
  - EXEC CICS LINK PROGRAM CHANNEL
  - EXEC CICS XCTL PROGRAM CHANNEL
  - EXEC CICS RETURN TRANSID CHANNEL
  - EXEC CICS START TRANSID CHANNEL

# Web Services

- **Evolution of SOAP for CICS feature**
  - New infrastructure to act as a first class Web service end-point
  - Simplification of pipeline and system management
  - Fully integrated into CICS
    - RDO, problem determination, monitoring & statistics
    - New tooling support for easier application development
  
- **New features**
  - Resource definitions
    - URIMAP, PIPELINE, WEBSERVICE
  - Flexible configuration of the pipeline
  - Utility programs to:
    - Generate language structure from WSDL
    - Generate WSDL from language structures
  - Data mapping support in runtime
    - Between SOAP messages and language structures
  - New EXEC CICS API to support outbound requests

# Open Transaction Environment Exploitation

- **OPENAPI program support**
  - COBOL, PL/I, Assembler, C (not compiled with XPLink)
  - Programs must be thread safe
    - Programs will run on new L8 and L9 TCBs
  
- **C/C++ programs can be compiled with XPLINK option**
  - Higher performance for C/C++ function calls
  - Programs must be thread safe to use XPLink
    - XPLink programs will start and run on new X8 and X9 TCBs
  
- **OTE exploitation by CICS SSL connection management**
  - New SP mode TCB
    - Reduces system storage requirements
  - Existing S8 TCBs
    - Now only allocated for the duration of the SSL requests
    - Provides for increased number of simultaneous SSL sessions
  
- **EXEC CICS WEB commands are now thread safe**



## Architectural Patterns

- **New CICS example application**
  - Generic catalog manager and purchase order application
    - COBOL application
    - VSAM data files
  - Can be used to illustrate end to end scenarios
    - Demonstrate CICS Web Services
      - WMQ and http transports
      - “Bottom up”, “Top down” and “Meet in the middle” approaches
  - “Best Practices”
    - Separation of presentation, business and data access logic
    - Use of Channels and COMMAREAs

## CICS Integrator Adapter for z/OS V6

- **Equivalent to MQIAC V1.1.3+**
  - Renamed from MQIAC
  
- **Runtime included in CICS TS V3.1 packaging**
  - Tooling to be provided by next version of WSED
    - WebSphere Studio based user interface
  
- **Enhancements**
  - Additional vector handling and usability enhancements
    - Support for SEND / SEND TEXT type commands, ACCUM option
    - Remove prereq of WMQ
  - Support for XML messages
    - Will use XML parser of Enterprise COBOL of z/OS

## CICS Integrator Adapter for z/OS V6...

- **Support of new processing patterns**
  - In MQIAC
    - Aggregate connector, persistent
  - In CICS Integrator Adapter
    - Aggregate connector, persistent
    - Aggregate connector, non-persistent (new)
    - Single connector, persistent (new)
    - Single connector, non-persistent (new)
  
- **Support for LINK3270 bridge passthrough processing**

## CPSM Web User Interface Usability Enhancements

- **WUI now is functionally equivalent to the TSO EUI**
  - Dynamic selection lists
    - Generates lists of potential values for various attributes in the WUI
  - Filter confirmation
    - Specify a filter criteria before displaying the view
  - Result set warning count
    - Users can be warned before navigating to a view that will generate large amounts of records
  - User group profiles
    - Allow administrators to configure the WUI in different ways for different groups of users (e.g. operators, sysprogs)
  - Favorites support
    - Save views that are used frequently
  - BATCHREP enhancements

## Language Environment Enhancements

- **Support for LE Assembler programs**
  - Application programs with LE MAIN
    - Not for Global or Task Related User Exits
  - New translator option LEASM
    - Must be Linkedited with DFHELII
  - High Level Assembler for MVS & VM & VSE Release 4+
    - Allows for use of LE debugger

## Language Environment Enhancements...

### ■ Integrated Translator for C and C++ Programs

#### – Benefits

- Translation and Compilation are combined
- Evaluation of preprocessor statements
  - #include and #define
- Easier to use with on-line debuggers
- C/C++ source can be in HFS Files or PDS/PDSE Data sets
- Removal of CICS translator input source restrictions such as Margins, columns

#### – Requires:

- z/OS 1.7 C/C++ compiler

## Support for:

- **IBM Software Developer Kit for z/OS, Java 2 Technology Edition - Version 1.4.2**
  - Features of Java 1.4.2 are:
    - Enhancements to security, XML, networking, and debugging support
    - Numerous fixes and minor improvements
  
- **WebSphere Application Server**
  - Version 5 and 6

## Support for:

- **EJB 2.1 deployment descriptor toleration**

- Allows use of WebSphere V6 tooling, ASTK, for the deployment of EJB 1.1 session beans

- **64-bit toleration**

- Toleration of 64-bit code in CICS address space
  - CICS TS V3.1 does not support execution of 64-bit applications
  - Extensions are provided to the CICS abend capture mechanisms
    - Report the contents of the full 64-bit general purpose registers



## The Information Center

- **Migration to Eclipse**
  - Linux in Intel
    - Suse and RedHat
- **Consistent look and feel**
- **New welcome page**
- **Improved search engine**
- **What's New section**
- **Learning paths**
- **Information roadmaps**
- **Navigation revision**
- **e-support plugin**

# The Information Center...

“can support many information centers in the same framework.”

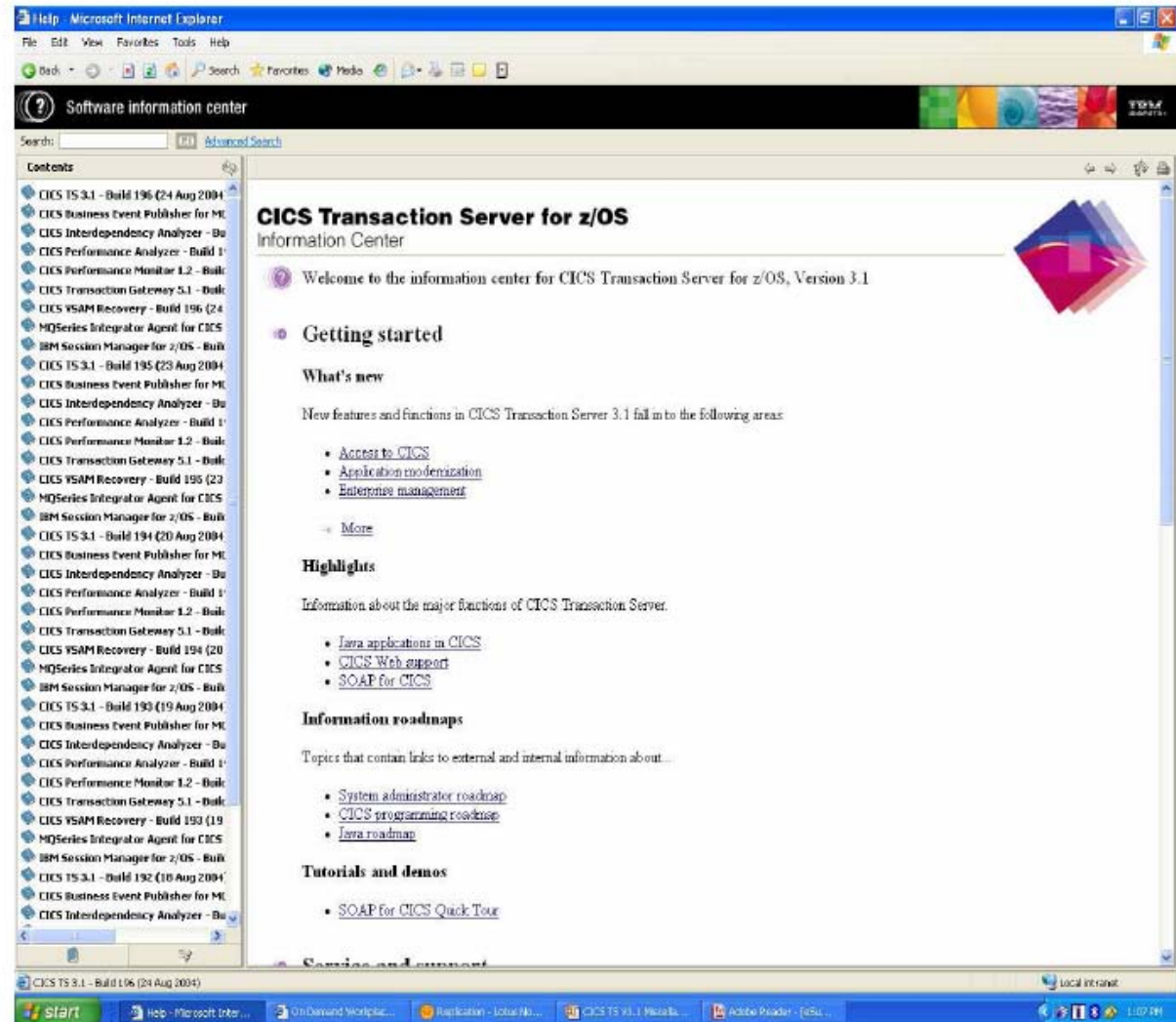
Standard look and feel

New welcome page

New navigation tree

Immediate access to key information:

- What's New
- Highlights
- Information roadmaps
- Learning paths

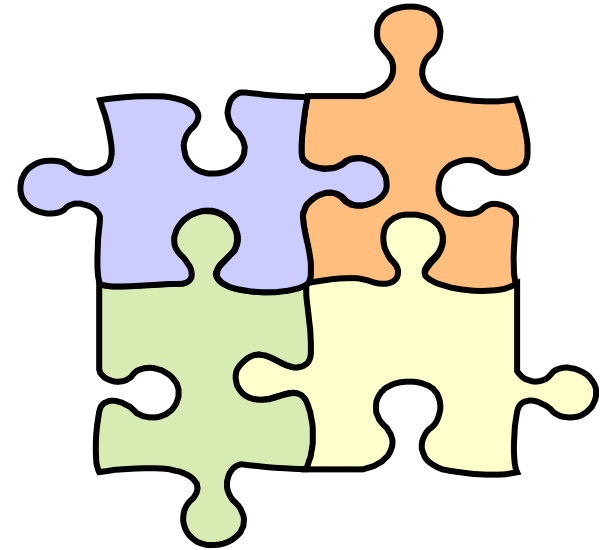
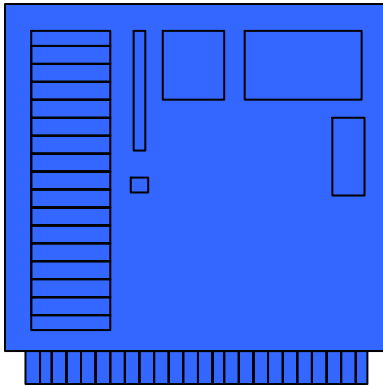


## Functionality Removals

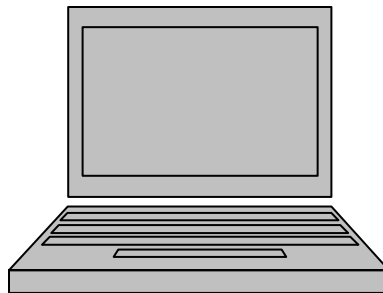
- **OS/VS COBOL**
  - Programs using this level of COBOL will abend APCE
- **1 byte console ids**
- **High Performance Java**
- **ECI base classes (ECIREQUEST)**
- **Common Connector Framework (CCF)**
- **TCAM TOR**
  - Network support
- **BTAM**
- **CPSM remote MAS agent for Windows**
- **Affinity Analysis Utility**
  - Merged with the Interdependency Analysis tool (CICS IA)

## Planning Information

- **CICSplex SM TSO End User Interface**
  - Will be removed in the next release of CICS TS for z/OS
- **ONC RPC feature**
  - Will be removed in a future release of CICS TS for z/OS
- **CICS Web Interface COMMAREA interfaces**
  - Will be removed in a future release of CICS TS for z/OS
- **CICS Web Server plug-in**
  - Will be removed in a future release of CICS TS for z/OS



# Which CICS Release ?



## Which Release ?

- **Software Currency**

- Single most important factor

- Supported Software
- New Technology and Enhanced Functionality
- Industry Standards
- Ease of use

- **Business Requirements**

- Allows for fast ROI

- Reuse of existing applications
- Multi-language support
- Application interfaces
- WWW usage

# Summary

## **CICS today**

- CICS is IBM's premier transaction processor for the z/OS and OS/390 environments

## **The role of CICS TS in an enterprise solution on z/OS is to enable:**

- Efficient and optimized extension and reuse of existing CICS applications
- Allow enterprises to create applications using new technologies by building on CICS skills
- Support and manage mixed application types and workloads

## **CICS TS 3.1 new features**

- CICS TS 3.1 provides a platform from which an enterprise can evolve towards the adoption of e-business exploiting all the advantages of the evolutionary approach while capturing new opportunities derived from the latest industry standard e-business technologies
  - e-business Access to CICS
  - Application Modernization
  - Enterprise Management