

Emulating 3270 terminals using WebSphere Developer for zSeries Version 6.0



Enabling a 3270 (TN3270) screen in the WebSphere Developer for zSeries workbench

By: Dana Boudreau

IBM Software Group

Copyright

Copyright 2005 IBM Corporation, all rights reserved.

References in this publication to IBM products, programs, or services do not imply that IBM intends to make these available in all countries in which IBM operates. Any reference to an IBM product, program, or service is not intended to state or imply that only that IBM product, program, or service may be used. Subject to IBM's valid intellectual property or other legally prosecutable rights, any functionally equivalent product, program, or service may be used instead of the IBM product, program, or service. The evaluation and verification of operation in conjunction with other products, except those expressly designated by IBM, are the responsibility of the user.

IBM may have patents or pending patent applications covering subject matter in this document. The furnishing of this document does not give you any license to these patents. You can send license inquiries, in writing, to:

IBM Director of Licensing
IBM Corporation
500 Columbus Avenue
Thornwood, NY 10594 U.S.A.

Purpose

Some customer asked for the capability to go to the TSO from WSED and execute ISPF commands, like interactive CLISTS.

Although WebSphere® Developer for zSeries® (WD/z) does not provide a TN3270 screen, the basic Java™ classes are available, but not accessible by the user.

This paper describes an available plug-in that when installed can provide a 3270 (TN3270) screen in the WD/z workbench.

Installing and configuring the Host Connect plugin

1. Installation of the required WD/z plug-in:

The Host Connect plugin has an installshield wizard. This pops up after clicking on the install .exe file (HostConnectTP.exe) or the setup.exe icon. Follow this wizard, accept the license, and finish the install.

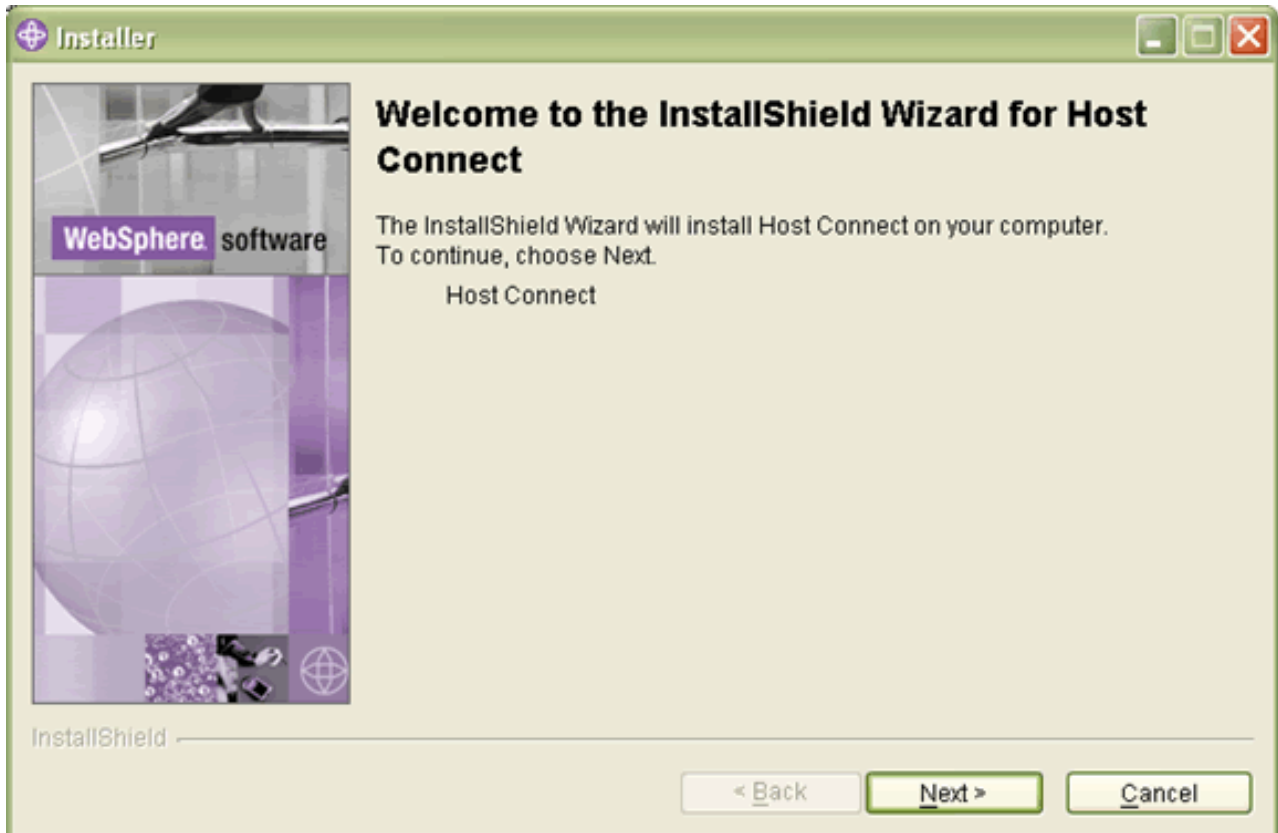


Figure 1. Install Welcome

At this point the installation is complete. The next time that WD/z is started this plug-in is linked into the desktop.

Note: If after restarting WD/z the plug-in does not show up in the File -> New -> Other... menu then you will need to restart the WD/z desktop with the '-clean' option. To do that - go to Windows® Start -> Run and type in <install directory> \IBM\Rational\SDP\6.0\rational_sdp.exe -clean and click on OK

For example:

```
D:\Program Files\IBM\Rational\SDP\6.0\rational_sdp.exe  
-clean
```

2. Setup for each desktop

Create a simple project to contain the 3270 terminal sessions

a. Create a Simple project

File -> New -> Other... -> Simple -> Project

b. Enter the Service project name, like HostConnect and click Finish.

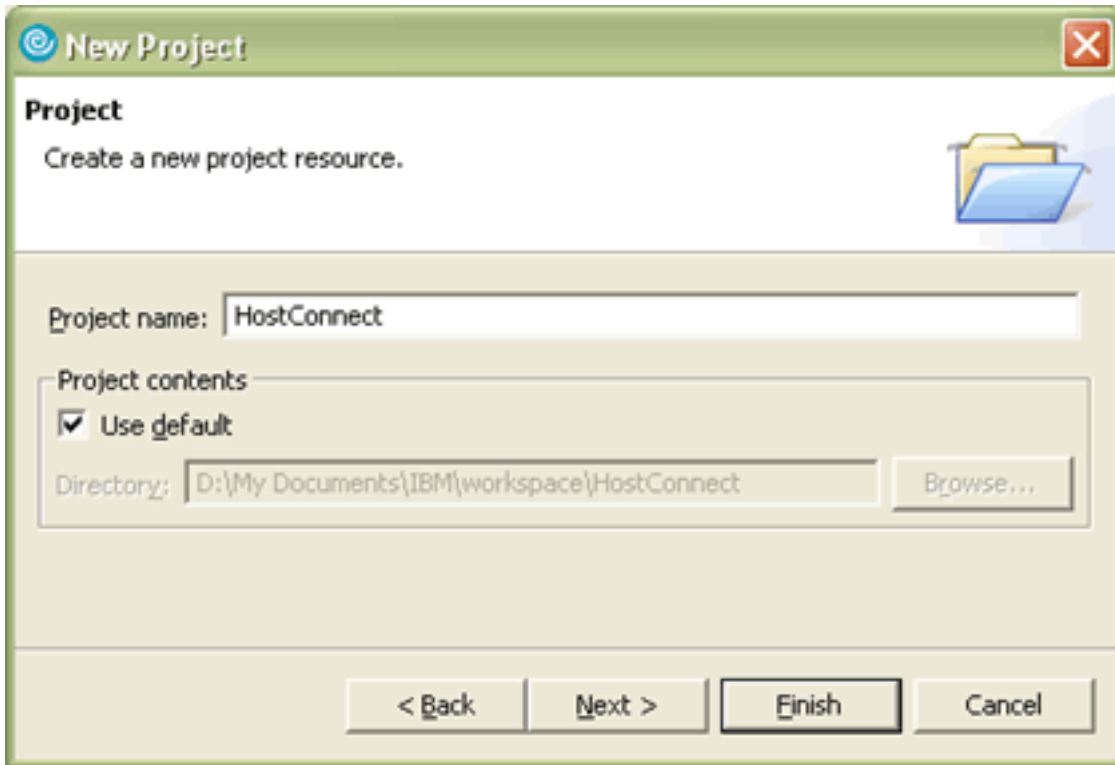


Figure 2. Create a simple project

3. Create a 3270 session

The next step is to add a 3270 connection to the simple project. If the plug-in does not show up in the menu list, then close down WD/z and restart it with the '- clean option'. See the notes in the install section on -clean.

- 3.1. Create a 3270 connection window:

File -> New -> Other... -> Sample Host Connection Wizards -> Host Connect Editor file

Note: You may have to select show all wizards to see the Sample Host Connection Wizard

Click Next

Enter the container name, like HostConnect (Optionally use the browse button to select the project you just created).

Optionally change new_file.hce to a new file name. For example:

CTFMVS07.hce

Note: The extension must be .hce

Enter the Host name or IP address to the host that you want to connect to. For example:

crfmvs07.rtp.raleigh.ibm.com

If you don't do this now you can change it later.

Optionally you can change the screen size, session type, Host port number or code page.

Click on Connect. (Once Connected, if you want to Disconnect then click on the Disconnect button)

Click Finish

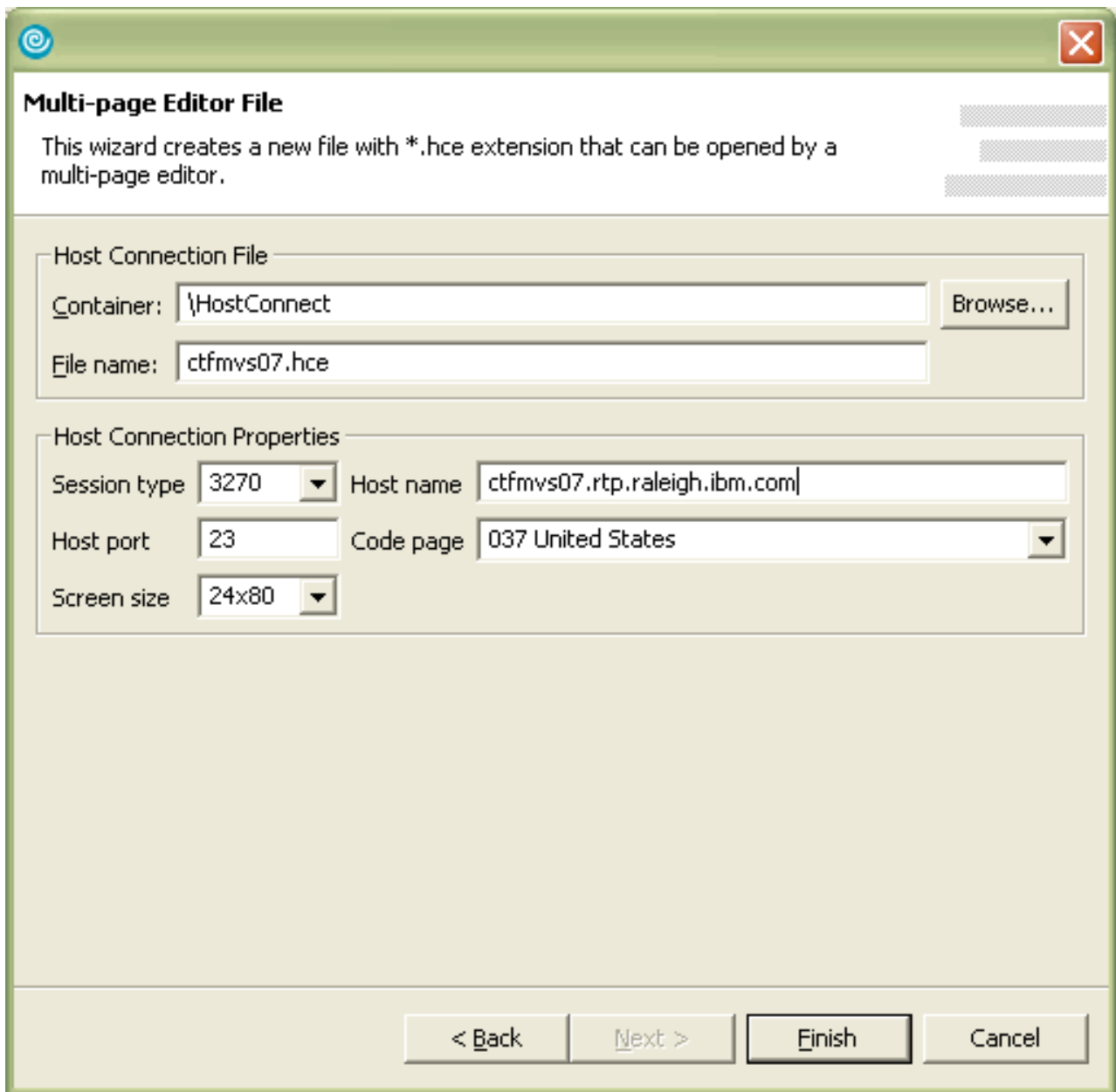


Figure 3. Create 3270 session

Note: To create another 3270 session, to say another ID or system, repeat step 3 and give the file name a different name. For example

CTFMVS08.hce

4. Connecting to a host system

To connect to the host TSO to interact with ISPF, or execute CLIST or other 3270 applications complete the following:

- a. 4.1. Open the z/OS® projects perspective and double click on 3270.terminal your created earlier.

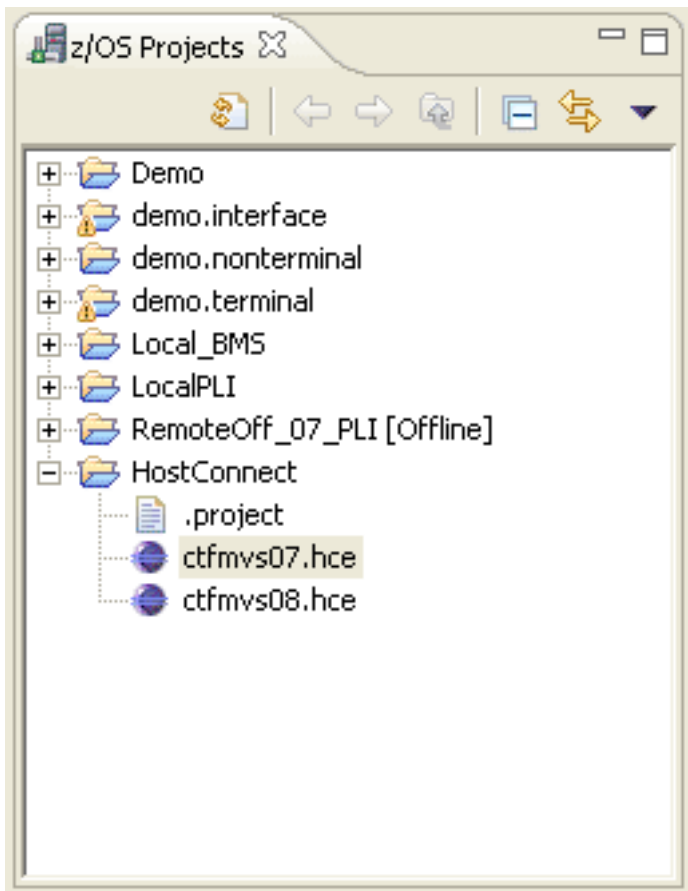


Figure 4. Click on a Project

- b. 4.2. Select the Host Properties tab

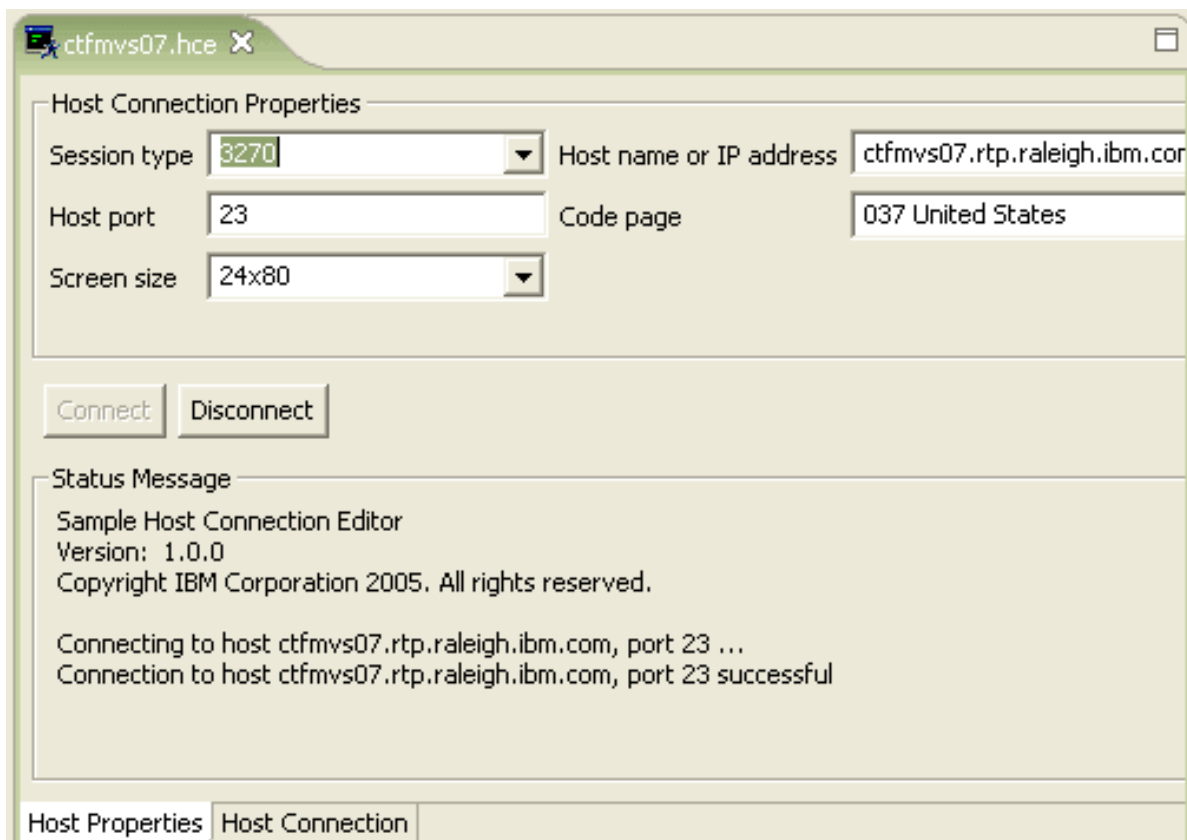


Figure 5. Host connection properties

If the properties were set up during the create session stage (described earlier) no additional steps are required to define the session. If you need to add or change session information then continue. Enter or change the Host name or IP address to the host that you want to connect to. For example: `ctfmvs07.rtp.raleigh.ibm.com`

Optionally you can change the screen size, session type, Host port number or code page.

Click on Connect. The status message will update with the current connect status. You will automatically jump to the Host Connection tab to login and interact with the host.

Once connected, if you want to Disconnect then select the Host Properties tab and click on the Disconnect button. A confirmation dialog will appear and after selecting Yes the session will disconnect.

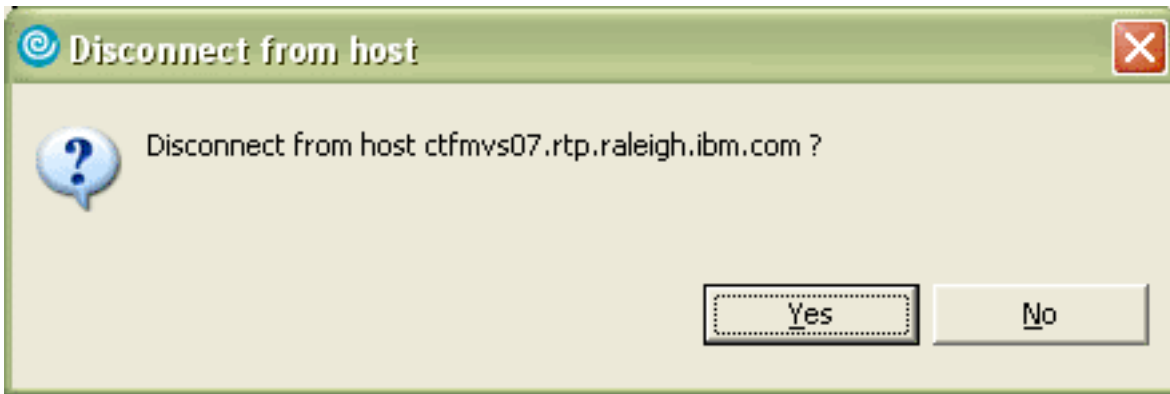


Figure 6. Disconnect confirmation dialog

- c. 4.3. At this point you should be connected and the screen switched to the Host Connection tab

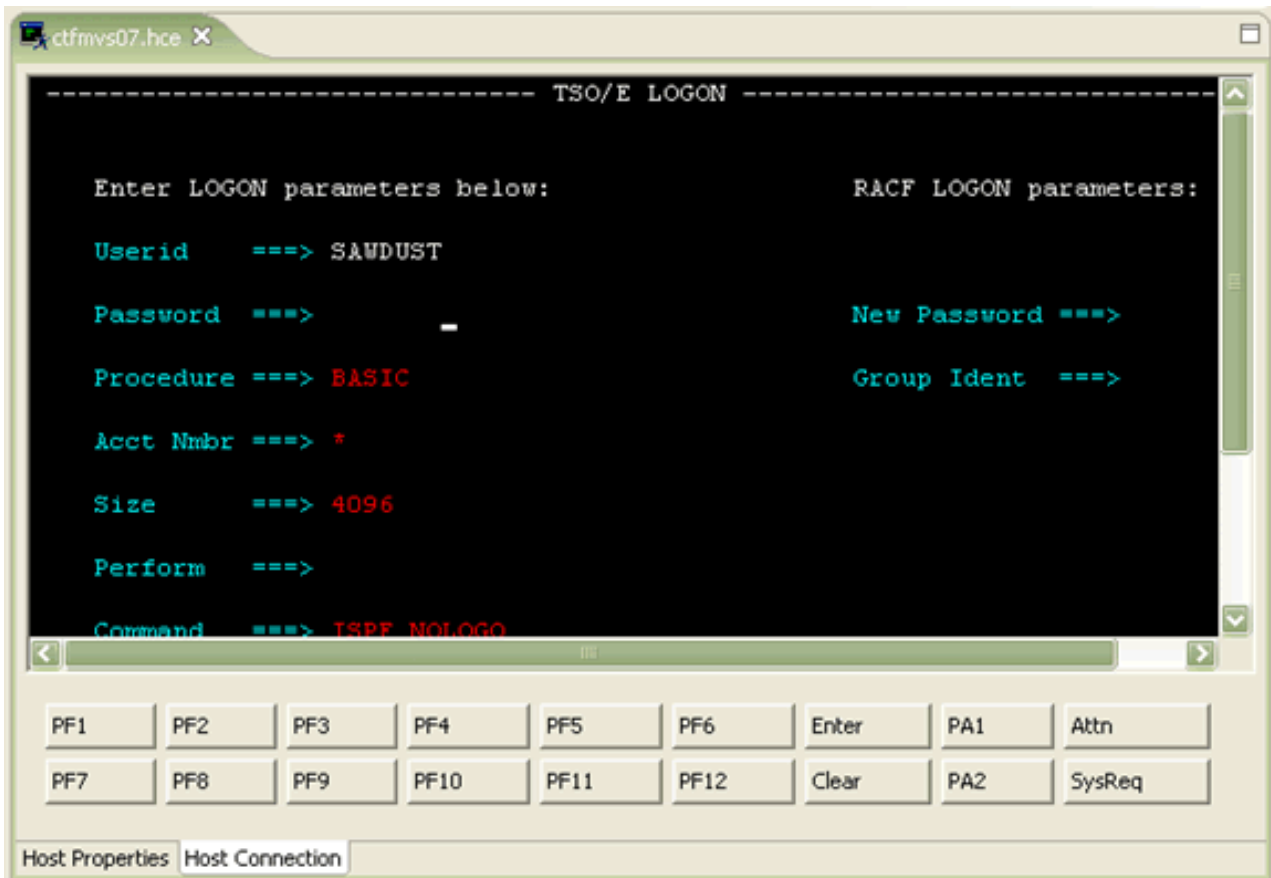


Figure 7. 3270 Session

You can now logon as necessary. To get a full screen double click on the editor tab.

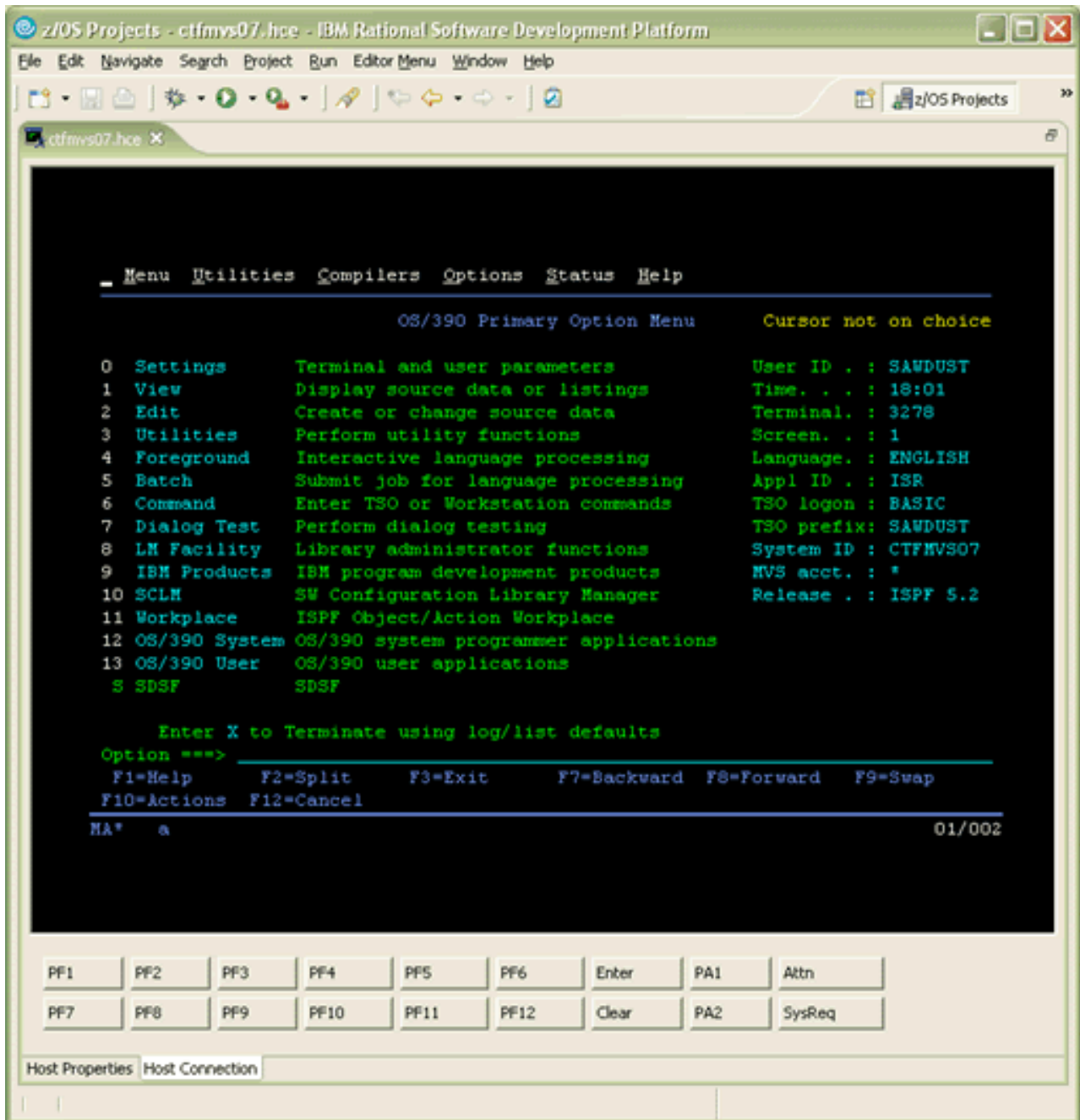


Figure 8. Full screen ISPF panel

Notices

Note to U.S. Government Users Restricted Rights - Use, duplication or disclosure restricted by GSA ADP Schedule Contract with IBM® Corp.

This information was developed for products and services offered in the U.S.A. IBM may not offer the products, services, or features discussed in this document in other countries. Consult your local IBM representative for information on the products and services currently available in your area. Any reference to an IBM product, program, or service is not intended to state or imply that only that IBM product, program, or service may be used. Any functionally equivalent product, program, or service that does not infringe any IBM intellectual property right may be used instead. However, it is the user's responsibility to evaluate and verify the operation of any non-IBM product, program, or service.

IBM may have patents or pending patent applications covering subject matter described in this document. The furnishing of this document does not give you any license to these patents. You can send license inquiries, in writing, to:

IBM Director of Licensing IBM Corporation North Castle Drive Armonk, NY 10504-1785 U.S.A.

For license inquiries regarding double-byte (DBCS) information, contact the IBM Intellectual Property Department in your country or send inquiries, in writing, to:

IBM World Trade Asia Corporation
Licensing
2-31 Roppongi 3-chome, Minato-ku
Tokyo 106, Japan

IBM may use or distribute any of the information you supply in any way it believes appropriate without incurring any obligation to you.

The following paragraph does not apply to the United Kingdom or any other country where such provisions are inconsistent with local law: INTERNATIONAL BUSINESS MACHINES CORPORATION PROVIDES THIS PUBLICATION "AS IS" WITHOUT WARRANTY OF ANY KIND, EITHER EXPRESS OR IMPLIED, INCLUDING, BUT NOT LIMITED TO, THE IMPLIED WARRANTIES OR CONDITIONS OF NON-INFRINGEMENT, MERCHANTABILITY OR FITNESS FOR A PARTICULAR PURPOSE. Some states do not allow disclaimer of express or implied warranties in certain transactions, therefore, this statement may not apply to you.

This information could include technical inaccuracies or typographical errors. Changes are periodically made to the information herein; these changes will be incorporated in new editions of the publication. IBM may make improvements and/or changes in the product(s) and/or the program(s) described in this publication at any time without notice.

Licensees of this program who wish to have information about it for the purpose of enabling: (i) the exchange of information between independently created programs and other programs (including this one) and (ii) the mutual use of the information which has been exchanged, should contact:

IBM Corporation
P.O. Box 12195, Dept. TL3B/B503/B313
3039 Cornwallis Rd.
Research Triangle Park, NC 27709-2195
U.S.A.

Such information may be available, subject to appropriate terms and conditions, including in some cases, payment of a fee.

The licensed program described in this document and all licensed material available for it are provided by IBM under terms of the IBM Customer Agreement, IBM International Program License Agreement or any equivalent agreement between us.

Information concerning non-IBM products was obtained from the suppliers of those products, their published announcements or other publicly available sources. IBM has not tested those products and cannot confirm the accuracy of performance, compatibility or any other claims related to non-IBM products. Questions on the capabilities of non-IBM products should be addressed to the suppliers of those products.

Any references in this information to non-IBM Web sites are provided for convenience only and do not in any manner serve as an endorsement of those Web sites. The materials at those Web sites are not part of the materials for this IBM product and use of those Web sites is at your own risk.

This information contains examples of data and reports used in daily business operations. To illustrate them as completely as possible, the examples may include the names of individuals, companies, brands, and products. All of these names are fictitious and any similarity to the names and addresses used by an actual business enterprise is entirely coincidental.

Trademarks and service marks

The following terms are trademarks or registered trademarks of International Business Machines Corporation in the United States, or other countries, or both:

- IBM
- WebSphere
- z/OS
- zSeries

Java and all Java-based trademarks and logos are trademarks or registered trademarks of Sun Microsystems, Inc. in the United States and other countries.

Windows and the Windows logo are trademarks or registered trademarks of Microsoft[®] Corporation in the United States, or other countries, or both.

Other company, product, and service names, which may be denoted by a double asterisk(**), may be trademarks or service marks of others.

First edition (July 2005)

This edition applies to version 6.0 of IBM WebSphere Developer for zSeries (product number 5724-L44) and to all subsequent releases and modifications until otherwise indicated in new editions.

Order publications by phone or fax. IBM Software Manufacturing Solutions takes publication orders between 8:30 a.m. and 7:00 p.m. eastern standard time (EST). The phone number is (800) 879-2755. The fax number is (800) 445-9269. Faxes should be sent Attn: Publications, 3rd floor.

You can also order publications through your IBM representative or the IBM branch office serving your locality. Publications are not stocked at the address below.

IBM welcomes your comments. You can send your comments by mail to the following address:

IBM Corporation, Attn: Information Development, Department 53NA Building 501, P.O. Box 12195, Research Triangle Park, NC 27709-2195.

When you send information to IBM, you grant IBM a nonexclusive right to use or distribute the information in any way it believes appropriate without incurring any obligation to you.

© **Copyright International Business Machines Corporation 2005. All rights reserved.**

US Government Users Restricted Rights – Use, duplication or disclosure restricted by GSA ADP Schedule Contract with IBM Corp.

GI10-3361-00

