

WebSphere® Business Integration for Financial Networks



Command Center

Version 1.2.0.1

Readme

Note

Before using this information and the product it supports, be sure to read the general information under “Notices” on page 11.

Sixth Edition, March 2006

Readme for SupportPac: WebSphere BI for FN Command Center.

IBM provides the code described in this document AS IS without any warranty or liability. This code has not been thoroughly tested under all conditions. IBM therefore, cannot guarantee or imply reliability, serviceability or function of these programs.

© **Copyright International Business Machines Corporation 2002, 2006. All rights reserved.**

US Government Users Restricted Rights – Use, duplication or disclosure restricted by GSA ADP Schedule Contract with IBM Corp.

Contents

Summary of changes	v	
Version 1.2.0.1	v	
Version 1.2.0.0	v	
Version 1.1.0.4	v	
Version 1.1.0.3	v	
Version 1.1.0.2	v	
 WebSphere BI for FN Command Center	1	
Package content	1	
Prerequisites	1	
Installing the Command Center	2	
Setting the Command Center parameters	4	
Using the Command Center	6	
Troubleshooting	7	
Using Application Server Toolkit (ASTK) to import WBIforFN_CommandCenter.war.	7	
		Using Application Server Toolkit (ASTK) to modify Web Deploy Descriptor (web.xml) 8
		Using Application Server Toolkit (ASTK) to modify existing Context Parameters 8
		Using Application Server Toolkit (ASTK) to add new Context Parameters 8
		Using Application Server Toolkit (ASTK) to export WAR file. 8
		Using the WebSphere Application Assembly Tool to set parameters 8
		Using the administrative console to install a Web module 9
		Notices 11

Summary of changes

Version 1.2.0.1

The following improvements were implemented:

1. Version 1.2.0.1 Fix the problem of sending out message with incorrect user identification to WebSphere BI for FN.
2. Provide required information of custom property to make Command Center work on WAS version latter than V5.1.1.

Version 1.2.0.0

The following improvements were implemented:

1. Support for the WebSphere BI for FN Version 1 release 2 commands introduced in April 2005.
2. Remove SAG 4.0 Support.

Version 1.1.0.4

The following improvements were implemented:

1. A missing property file, which led to incorrect display when receiving DNFJ3017I and DNFJ3018I response messages, has been added.
2. A Java exception no longer thrown when the result of an LT status query is displayed.
3. The code page set in the message header has been corrected.

Version 1.1.0.3

Support for the new WebSphere BI for FN commands introduced in July 2004.

Version 1.1.0.2

Support for the new WebSphere BI for FN commands introduced in March 2004.

WebSphere BI for FN Command Center

WebSphere BI for FN Command Center (abbreviated to Command Center) provides a Web based interface for WebSphere BI for FN operating and administration tasks. You can use it to issue commands from any Web browser within a network where the Command Center is installed.

The Command Center:

- Lets you issue all WebSphere BI for FN commands, including those provided by Extension for SWIFTNet and Bridge for SWIFTNet
- Does not require insecure telnet or tn3270 access
- Requires no installation on end-user workstations
- Centralizes software installation and updates
- Provides secure access using encrypted communication and authentication
- Can be used in conjunction with any number of WebSphere BI for FN instances
- Lets you combine single commands into easy to use forms
- Lets you select commands from a panel, eliminating the need to memorize commands and their syntax
- Offers online help for all commands
- Is a J2EE 1.2 compatible Web application
- Lets you use the High Availability functionality offered by IBM WebSphere Application Server (WAS)

Package content

The Command Center package contains the following files:

LA_en.txt

International License Agreement for Non-Warranted Programs.

license2.txt

IBM LICENSE AGREEMENT FOR CATEGORY 2 SUPPORTPACS. Please read before installing the package on a WebServer.

ReadMe.pdf

Information about the WebSphere BI for FN Command Center.

WBIforFN_CommandCenter.war

WebSphere BI for FN Command Center Web application.

WBIforFN_CommandCenterHelp.war

Online help for WebSphere BI for FN Command Center.

Prerequisites

The Command Center requires the following software:

- IBM WebSphere BI for FN Version 1.2.0 Base (PID 5639-N50)
- If commands associated with SWIFTNet (for example, SAG configuration and operation commands) are to be issued, one of the following:
 - WebSphere BI for FN Extension for SWIFTNet
 - WebSphere BI for FN Bridge for SWIFTNet

- IBM WebSphere Application Server 5.1 Standard (or Express) for Windows
- WebSphere MQ classes for Java 5.3
- WebSphere Application Server Toolkit for WAS V5.1

Note: The Command Center can be used in conjunction with any application server that supports J2EE 1.2 or 1.3; however, such configurations are untested.

Installing the Command Center

To install the Command Center:

1. Download 1.2.0.1-WS-WBIFNCC.zip to a temporary directory
2. Uncompress 1.2.0.1-WS-WBIFNCC.zip using a ZIP-file tool (for example, InfoZip Unzip, which can be downloaded from <http://www.info-zip.org/pub/infozip/>).
3. Set the Command Center parameters as described in “Setting the Command Center parameters” on page 4. If you use WebSphere Application Server (WAS) as your application server, it is recommended that you use the WebSphere Application Assembly Tool to set these parameters (see “Using the WebSphere Application Assembly Tool to set parameters” on page 8 for step-by-step instructions).
4. Install WBIforFN_CommandCenterHelp.war.¹
5. Install WBIforFN_CommandCenter.war.¹
6. Set up user IDs:
 - Assign the role **all** to **All authenticated users** or to list of specific users or groups.
 - Each user that is to use the Command Center must have the same user ID (case sensitive) on both the Windows server and the WebSphere BI for FN host.
 - If the WebSphere BI for FN host is a z/OS system, all user IDs must use only uppercase letters.
 - On the host, each user ID must have the rights to perform whichever WebSphere BI for FN commands are to be issued from the Command Center.
 - A user ID cannot be the same as the WAS computer name.
 - The user ID running the server requires Administrator permission.
 - The Command Center uses the WebSphere MQ Client Java API to communicate with the WebSphere MQ server. The following parameters define the connection to the WebSphere MQ server:
 - DNI_QM_<instance>
 - DNI_HOST_<instance>
 - DNI_PORT_<instance>
 - DNI_CHNL_<instance>
 - DNI_CONTYPE_<instance>
 - The user ID under which the Web server runs must have **alternate user authority** rights on the WebSphere MQ server.

1. To install a Web application to a WAS configuration, you can use the administrative console. For more information, refer to “Using the administrative console to install a Web module” on page 9 or the WAS Infocenter (<http://www-3.ibm.com/software/webservers/appserv/infocenter.html>).

- To authenticate an user, WAS can use either the security features provided by the local operating system, or an LDAP server such as IBM Directory Server on z/OS.
 - The Command Center uses MQSeries Client to connect to the WebSphere BI for FN server. It is recommended that you secure the connection between the application server on which the Command Center runs and the WebSphere BI for FN server. If you use WebSphere MQ 5.3 on your WebSphere BI for FN server, you can use Secure Sockets Layer (SSL) to secure the connection. SSL provides communication encryption, authentication, and message integrity. For more information, see *WebSphere MQ Security*, SC34-6079.
7. Make sure that the Command Center has access to the WebSphere MQ classes for Java (WebSphere MQ base Java) library:
 - a. Log on to the WebSphere Administrative Console.
 - b. Ensure that the WebSphere MQ installation paths are configured in the WebSphere Application Server:
 - 1) Navigate to **Environment > Manage WebSphere Variables**.
 - 2) Ensure that the variable MQ_INSTALL_ROOT points to the WebSphere MQ installation directory.
 - c. Create a new shared library entry:
 - 1) Navigate to **Environment > Shared Libraries**.
 - 2) Click on **New**.
 - 3) Enter a name; for example **WMQBaseLib**.
 - 4) In the classpath, enter the following:
 - On Windows:


```
{MQJMS_LIB_ROOT}\com.ibm.mq.jar
```

```
{MQJMS_LIB_ROOT}\connector.jar
```
 - On other operating systems:


```
{MQJMS_LIB_ROOT}/com.ibm.mq.jar
```

```
{MQJMS_LIB_ROOT}/connector.jar
```
 - 5) Click **OK**.
 - d. Add the shared library to the Command Center entry:
 - 1) Navigate to **Applications > Enterprise Applications**.
 - 2) Click on the enterprise application with the name **WBIforFN_CommandCenter**.
 - 3) In the Additional Properties section, click **Libraries**.
 - 4) Click **Add**, select the library **WMQBaseLib**, and click **OK**.
 - e. Save all changes:
 - 1) In the top line of the WebSphere Administrative Console, click **Save**.
 - 2) In the following page, click on **Save** to make the changes persistent.
 8. Add additional custom property.

Note: This is required if WAS version is latter than V5.1.1.

- a. Navigate to **Servers > Application Servers > Web Container**.
- b. Click **Custom Properties**.
- c. In the Custom Properties panel , click **New**.
- d. Enter the following:
 - 1) In the Name field enter **JSPParameterEncodedEnabled**.
 - 2) In the Value field enter **True**.

- 3) Click **OK**.
- e. Click **Save** to apply the change.
- f. Restart WebSphere application server to make the change become effective.

Note: Users who use older version should do a fully backup before installing WBIforFN_CommandCenter Version 1.2.0.0.

Setting the Command Center parameters

The Command Center parameters are located in the Web deployment descriptor file, which has the fully qualified name WBIforFN_CommandCenter\WebContent\WEB-INF\web.xml. Set each as described here.

DNI_HELPURL_PATH

The URL of online help application.

Examples:

- If installed on a different Web server:
DNI_HELPURL_PATH: http://www.name.com:8080/WBIforFN_CommandCenterHelp
- If installed locally:
DNI_HELPURL_PATH: /WBIforFN_CommandCenterHelp

DNI_INSTANCES

A list of all instances for which the command center is to be used. Instance names must be separated by a colon (:).

Example:

DNI_INSTANCES: INST1:INST2

DNI_PROFILE_INDEXFILES

A list of the index files of all available WebSphere BI for FN messages. Do not change this value!

DNI_OUS_<instance>

A list of the OUs available for each of the instances specified for the DNI_INSTANCES parameter. OU names must be separated by a colon (:).

Example:

DNI_OUS_INST1: SYSOU:OU1:OU2
DNI_OUS_INST2: SYSOU:BANKA

DNI_QM_<instance>

The name of the queue manager of each of the instances specified for the DNI_INSTANCES parameter.

Example:

DNI_QM_INST1: QM_INST1
DNI_QM_INST2: QBRK

DNI_HOST_<instance>

The host name (IP address or IP name) of each of the instances specified for the DNI_INSTANCES parameter.

Example:

DNI_HOST_INST1: 122.42.19.99
DNI_HOST_INST2: inst2.boeblingen.de.ibm.com

DNI_PORT_<instance>

The port number of each of the instances specified for the DNI_INSTANCES parameter.

Example:

```
DNI_PORT_INST1: 1414
DNI_PORT_INST2: 1415
```

DNI_CHNL_<instance>

The server channel name of each of the instances specified for the DNI_INSTANCES parameter.

Example:

```
DNI_CHNL_INST1: S_inst1
DNI_CHNL_INST2: SYSTEM.DEF.SVRCONN
```

DNI_CONTYPE_<instance>

The connection type of each of the instances specified for the DNI_INSTANCES parameter. Possible values:

- MQSeries Client
- MQSeries Bindings

Example:

```
DNI_CONTYPE_INST1: MQSeries Client
DNI_CONTYPE_INST2: MQSeries Bindings
```

DNI_INSTALLED_CMDS

A list of properties files describing available WebSphere BI for FN services. File names must be separated by a colon (:). The following are currently available:

```
/dnicmds0.properties - DniEventAdmin
/dnicmds1.properties - DniMonitor
/dnicmds2.properties - DniRCP
/dnicmds3.properties - DniSecAdm - roles
/dnicmds4.properties - DniSecAdm - users
/dnicmds5.properties - DniSyscAdm - cos
/dnicmds6.properties - DniSyscAdm - ct
/dnicmds7.properties - DniSyscAdm - ou
/dnicmds8.properties - DniMsgAccounting
/dnfcmds0.properties - DnfIlcCmd
/dnfcmds1.properties - DnfSagOp (for SWIFTAlliance Gateway 5)
/dnfcmds2.properties - DnfSagCfg (for SWIFTAlliance Gateway 5)
/dnfcmds3.properties - DnfIacSnf
```

Example:

```
DNI_INSTALLED_CMDS: /dnicmds0.properties:/dnicmds1.properties:
/dnicmds2.properties:/dnicmds3.properties:/dnicmds4.properties:
/dnicmds5.properties:/dnicmds6.properties:/dnicmds7.properties:
/dnfcmds0.properties:/dnfcmds1.properties:/dnfcmds2.properties:
/dnfcmds3.properties:/dnfcmds4.properties
```

DNI_OUS_<propfile>

A list of the OUs for which each service is available. Replace <propfile> with the short name, in uppercase letters, of each of the property files specified for the DNI_INSTALLED_CMDS parameter. OU names must be separated by a colon (:). A percent symbol (%) represents all the OUs specified in the DNI_OUS_<instance> parameters.

Example:

```
DNI_OUS_DNICMDS0: %
DNI_OUS_DNICMDS1: SYSOU
DNI_OUS_DNICMDS2: SYSOU
```

```

DNI_OUS_DNICMDS3: SYSOU
DNI_OUS_DNICMDS4: %
DNI_OUS_DNICMDS5: SYSOU
DNI_OUS_DNICMDS6: SYSOU
DNI_OUS_DNICMDS7: SYSOU
DNI_OUS_DNFCMDS0: BANKA:OU1:OU2
DNI_OUS_DNFCMDS1: DNFSYSOU
DNI_OUS_DNFCMDS2: DNFSYSOU
DNI_OUS_DNFCMDS3: DNFSYSOU

```

Using the Command Center

After the Command Center is installed, you can access it from any workstation connected to the application server. Use a Web browser to access https://YourServerName:9443/WBIforFN_CommandCenter. If required, you can change the security port in a server configuration profile. A log-on panel for the Command Center is displayed.

Log on to the Command Center. Remember that the user ID must contain only uppercase letters if the host is located on a z/OS system. The Command Center is displayed (see Figure 1).

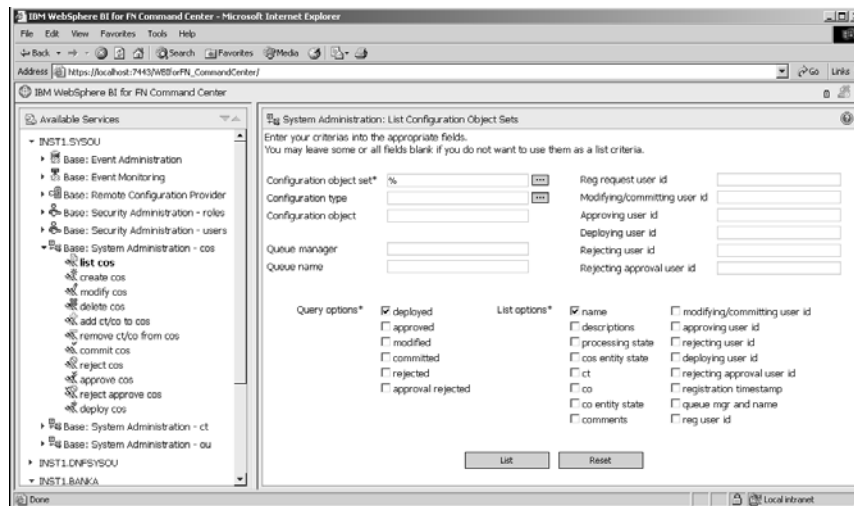


Figure 1. WebSphere BI for FN Command Center

The Command Center displays, on the left, a hierarchical list of all the organizational units (OUs), services, and commands. Which commands you see depends on the setting of the DNI_ACCHECK_FLAG parameter (see “Setting the Command Center parameters” on page 4).

To issue a command:

1. Select it from the list on the left.
2. Specify values for the appropriate parameters in the fields displayed on the right. Mandatory parameters are marked with an asterisk (*).
3. To issue the command, click the button located below the parameters.

To reset the contents of all fields to their default values, click the Reset button. For information about the meaning of a parameters, click the question mark (?) symbol in the upper right-hand corner of the Command Center (see Figure 2 on page 7).



Figure 2. Getting online help for the Command Center

If a security administrator changes the role assignments for your user ID while you are logged on to the Command Center, these changes do not become effective until you log off and log on again.

To log off, press the log-off button in the upper right-hand corner of the Command Center (see Figure 3).



Figure 3. Logging off the Command Center

Troubleshooting

In case of an error, the Command Center displays an exception message and Java stack that indicate the cause of the problem. If this information is insufficient to determine the exact cause, you can activate a trace by clicking the Trace button in the upper right-hand corner of the detailsPage window (see Figure 4). This causes the Command Center to record additional information in the WAS SystemErr.log and SystemOut.log.

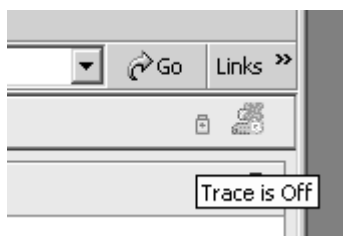


Figure 4. Activating the trace for the Command Center

Using Application Server Toolkit (ASTK) to import WBIforFN_CommandCenter.war

Do the following:

1. From the top menu bar choose **File > Import**.
2. On the Import select page select **WAR file** and press **Next**.

3. On the Import WAR file page select WAR file **WBIforFN_CommandCenter.war** using the **Browse** button.
4. Click the **New** button to create a new web project.
5. On the dynamic web project page type the project name *WBIforFN_CommandCenter* and click **Finish** button.
6. On the WAR file page click the **Finish** to complete the import.

Using Application Server Toolkit (ASTK) to modify Web Deploy Descriptor (web.xml)

Do the following:

1. In Navigator Window find the WBIforFN_CommandCenter project.
2. From the project step down to **WebContent > WEB-INF > lib** to locate **web.xml**.
3. Click **Parameters** tab to modify Web Context parameters. Examples are described in “Using Application Server Toolkit (ASTK) to modify existing Context Parameters” and “Using Application Server Toolkit (ASTK) to add new Context Parameters.”

Using Application Server Toolkit (ASTK) to modify existing Context Parameters

To add a new DNI instance do the following:

1. On the Context Parameters page select **DNI_INSTANCES** context parameter.
2. Modify the contents of the value field by appending **INST3** with preceding colon, for example: **INST1:INST2:INST3**

Using Application Server Toolkit (ASTK) to add new Context Parameters

To add a Queue Manager for Instance 3 do the following:

1. On the Context Parameters page select (New Context parameter).
2. Fill in the contents of the value field, for example, **QMINST3**.
3. Fill in the contents of the description value field, for example, Queue Manager for INST3.
4. Rename (New ContextParameter) to **DNI_QM_INST3**.

Using Application Server Toolkit (ASTK) to export WAR file

To export WBIforFN_CommandCenter project to WBIforFN_CommandCenter.war, do the following:

1. Select the WBIforFN_CommandCenter project.
2. From the top menu bar choose **File > Export**.
3. In the Export pop-up window, select WAR file and click **Next**.
4. Fill in the war filename into the Destination field.
5. Click **Finish** to complete Export.

Using the WebSphere Application Assembly Tool to set parameters

Do the following:

1. Start the WebSphere Application Assembly Tool (in the Windows environment, click **Start > Programs > IBM WebSphere > Application Server V5.0 > Application Assembly Tool**).
2. In the Welcome to the Application Assembly Tool window, click Cancel.
3. Click **File > Open**, then navigate to the temporary folder to which WBIforFN_CommandCenter.war was extracted.
4. Highlight the WBIforFN_CommandCenter.war file and click OK.
5. On the left side of the Application Assembly Tool window:
 - a. Click **Context Parameters**.
 - b. On the right side of the window, you will see a list of attributes to be modified. Modify them as described in "Setting the Command Center parameters" on page 4. Click Apply after changing or adding a parameter value.
6. Click File.
7. Click Save.
8. After receiving of the Message "AATL0011I: Archive was saved successfully", close the application (Click **File > Exit**).

Using the administrative console to install a Web module

Note: If you have begun the steps below and you decide not to install the application, click Cancel to exit. Do not move to another administrative console page without first clicking Cancel on an application installation page.

Do the following:

1. In the console navigation tree, click **Applications > Enterprise Applications**. The Enterprise Applications page is shown.
2. Check whether WBIforFN_CommandCenter.war is already installed on the server. If you find "WBIforFN_CommandCenter.war" in the Name column, you will need to stop and uninstall the application. To do this:
 - a. Select WBIforFN_CommandCenter.war row and click Stop.
 - b. After receiving of message "Application WBIforFN_CommandCenter.war on server <your server name> and node <your node> stopped successfully", select WBIforFN_CommandCenter.war row and click Uninstall.
 - c. Save the changes and restart the server.
3. In the console navigation tree, click **Applications > Install New Application**.
4. On the first **Preparing for application install** page:
 - a. Specify the full path name of the source application file (WBIforFN_CommandCenter.war). The .war file that you are installing can be on either:
 - The client machine (the machine that runs the Web browser)
 - The server machine (the machine to which the client is connected)

If you specify a .war file on the client machine, the administrative console uploads the .war file to the machine on which the console is running and proceeds with application installation.
 - b. Specify the context root (WBIforFN_CommandCenter).
 - c. Click Next.

5. On the second **Preparing for application install** page, click Next. The Install New Application pages are displayed.
6. On the **Step 1: Provide options to perform the installation panel** page:
 - a. Ensure that the Pre-compile JSP checkbox is not ***.
 - b. For Directory to Install Application, specify the directory to which the application .war file will be installed. The default value is the value of APP_INSTALL_ROOT/cell_name, where the APP_INSTALL_ROOT variable is install_root/installedApps; for example, C:\WebSphere\AppServer\installedApps\cell_name.
 You can specify an absolute path or use a pathmap variable such as \${MY_APPS}. You can use a pathmap variable in any installation. A WAS variable \${CELL} that denotes the current cell name can also be in the pathmap variable; for example, \${MY_APP}/\${CELL}.
 - c. Click Next.
7. On the **Step 2: Map virtual hosts for web modules** page:
 - a. Select a virtual host from the list that should map to a Web module defined in the application. The port number specified in the virtual host definition is used in the URL that is used to access artifacts such as servlets and JSP files in the Web module. Each Web module must have a virtual host to which it is mapped. Not specifying all needed virtual hosts will result in a validation error after you click Finish on the Summary panel.
 - b. Click Next.
8. On the **Step 3: Map modules to application servers** page:
 - a. Select a target server or a cluster from the Clusters and Servers list.
 - b. Click Next.
9. WbiforFN_CommandCenter has the security role **all** defined in its deployment descriptor. On the **Step 4: Map security roles to users/groups** page:
 - a. Specify users and groups that are mapped to the **all** security role. Place a check mark in the check box beside the **all** role and specify that predefined users such as Everyone or All Authenticated users are mapped to it. To select specific users or groups from the user registry:
 - 1) Select a role and click 'Lookup users' or 'Lookup groups'. A 'Lookup users' or 'Lookup groups' panel is displayed.
 - 2) Enter search criteria to obtain a list of users or groups from the user registry.
 - 3) Select individual users or groups from the results displayed.
 - 4) Click OK to map the selected users or groups to the role selected on the Step: Map security roles to users/groups panel.
 - b. Click Next.
10. On the "Step 5: Summary" page:
 - a. Check all settings.
 - b. Click Finish.
11. To save the changes to your configuration, click "Save to Master Configuration" or "Save" on the administrative console taskbar. The application is registered with the administrative configuration and application files are copied to the target directory:
 - For a single-server installation, application files are copied to the destination directory when you click Save.

- For the Network Deployment installation, files are copied to remote nodes when the configuration on the deployment manager synchronizes with the configuration on individual nodes.

The default target directory is `install_root/installedApps/cell_name`.

12. In the console navigation tree, click Applications > Enterprise Applications. The Enterprise Applications page is shown
 - a. Place a checkmark in the checkbox for `WBIforFN_CommandCenter`
 - b. Click Start.

The Command Center is started.

13. You can open a browser and log on to the Command Center using URL: `https://<yourhostname>:<securityport>/WBIforFN_CommandCenter` (for example, `https://localhost:9443/WBIforFN_CommandCenter`).

Notices

The following paragraph does not apply in any country where such provisions are inconsistent with local law.

INTERNATIONAL BUSINESS MACHINES CORPORATION PROVIDES THIS PUBLICATION "AS IS" WITHOUT WARRANTY OF ANY KIND, EITHER EXPRESS OR IMPLIED, INCLUDING, BUT NOT LIMITED TO, THE IMPLIED WARRANTIES OF MERCHANTABILITY OR FITNESS FOR A PARTICULAR PURPOSE.

Some states do not allow disclaimer of express or implied warranties in certain transactions, therefore this statement may not apply to you. References in this publication to IBM products, programs, or services do not imply that IBM intends to make these available in all countries in which IBM operates. Any reference to an IBM licensed program or other IBM product in this publication is not intended to state or imply that only IBM's program or other product may be used. Any functionally equivalent program that does not infringe any of the intellectual property rights may be used instead of the IBM product. Evaluation and verification of operation in conjunction with other products, except those expressly designated by IBM, is the user's responsibility. IBM may have patents or pending patent applications covering subject matter in this document. The furnishing of this document does not give you any license to these patents. You can send license inquiries, in writing, to the IBM Director of Licensing, IBM Corporation, 500 Columbus Avenue, Thornwood, New York 10594, USA.

The information contained in this document has not been submitted to any formal IBM test and is distributed AS IS. The use of the information or the implementation of any of these techniques is a customer responsibility and depends on the customer's ability to evaluate and integrate them into the customer's operational environment. While each item has been reviewed by IBM for accuracy in a specific situation, there is no guarantee that the same or similar results will be obtained elsewhere. Customers attempting to adapt these techniques to their own environments do so at their own risk.

The following terms are trademarks of the International Business Machines Corporation in the United States and/or other countries:

- WebSphere MQ
- WebSphere Application Server
- IBM

- OS/390
- z/OS

The following terms are trademarks of other Microsoft Corporation in the United States and/or other countries:

- Windows NT
- Windows 2000