



IBM Software Group

IBM WebSphere® Data Interchange V3.3

Common Event Handling



@business on demand.



Objectives

- Discuss new WDI error handling features
- Discuss the setup involved with the new features
- Discuss how these features might be used in various environments
- Discuss operational requirements involved with the new features
- Discuss default actions associated with the new features

WDI 3.3 Error Handling Features

- XML version of the print file
- Data format (fixed record) version of the print file
- Ability to route print files to destinations based on error severity and/or the occurrence of a specific error
- Greater flexibility with regard to filtering error messages to print files (and event log)
- Provide more information about the documents involved with an error
- Write print file messages during DT processing

WDI Print Files

- Created when running PERFORM commands
- Regular print file: PRTFILE
- XML print file: XMLPRNT
 - ▶ Defined VB, greater than or equal to 132
- Data format print file: ADFPRNT
 - ▶ Defined FB or VB, 132 bytes
- If one of these files is to be routed, the file must be able to be opened for write and read
 - ▶ JCL invocations: No **//PRTFILE DD SYSOUT=***

XML Print File - Sample

```
<DocInfo>
  <DocId>2222222222</DocId>
  <SenderId>ANY</SenderId>
  <SenderQual>ANY</SenderQual>
  <Syntax>edi</Syntax>
</DocInfo>
<Message>
  <MsgId>UT0008</MsgId>
  <DocId>2222222222</DocId>
  <Severity>0</Severity>
  <Text>Map name being processed: POTEST.</Text>
  <InsertData>POTEST</InsertData>
</Message>
```



Data Format Print File – Record Layouts

Message Record

```
char  rectype;      /* Record type (M = Message)      */
char  msgcont;     /* (Y = message record continuation) */
char  msgid[6];    /* Error message ID                */
char  sev[2];      /* Severity of error                */
char  docid[20];   /* Document ID                      */
char  numimbed[2]; /* Number of imbeds                 */
```

Text or Imbed Record

```
char  rectype;     /* Record type (T = Text or I = Imbed) */
char  msgcont;     /* (Y = message record continuation) */
char  imbcont;     /* (Y = imbed record continuation) */
char  textlen[3];  /* Length of text to follow          */
char  text[122];  /* Message text or imbed text        */
```

Application Defaults Profile

- Select whether to create an XML print file (default: no)
- Select whether to create an ADF print file (default: no)
- Select whether event log is active (default: yes)
- Choose error severity thresholds for the three print files and the event log
- Select specific error messages that can override severity thresholds
 - ▶ To be included or to be omitted from print files and event log regardless of severity

Application Defaults Profile – General Tab

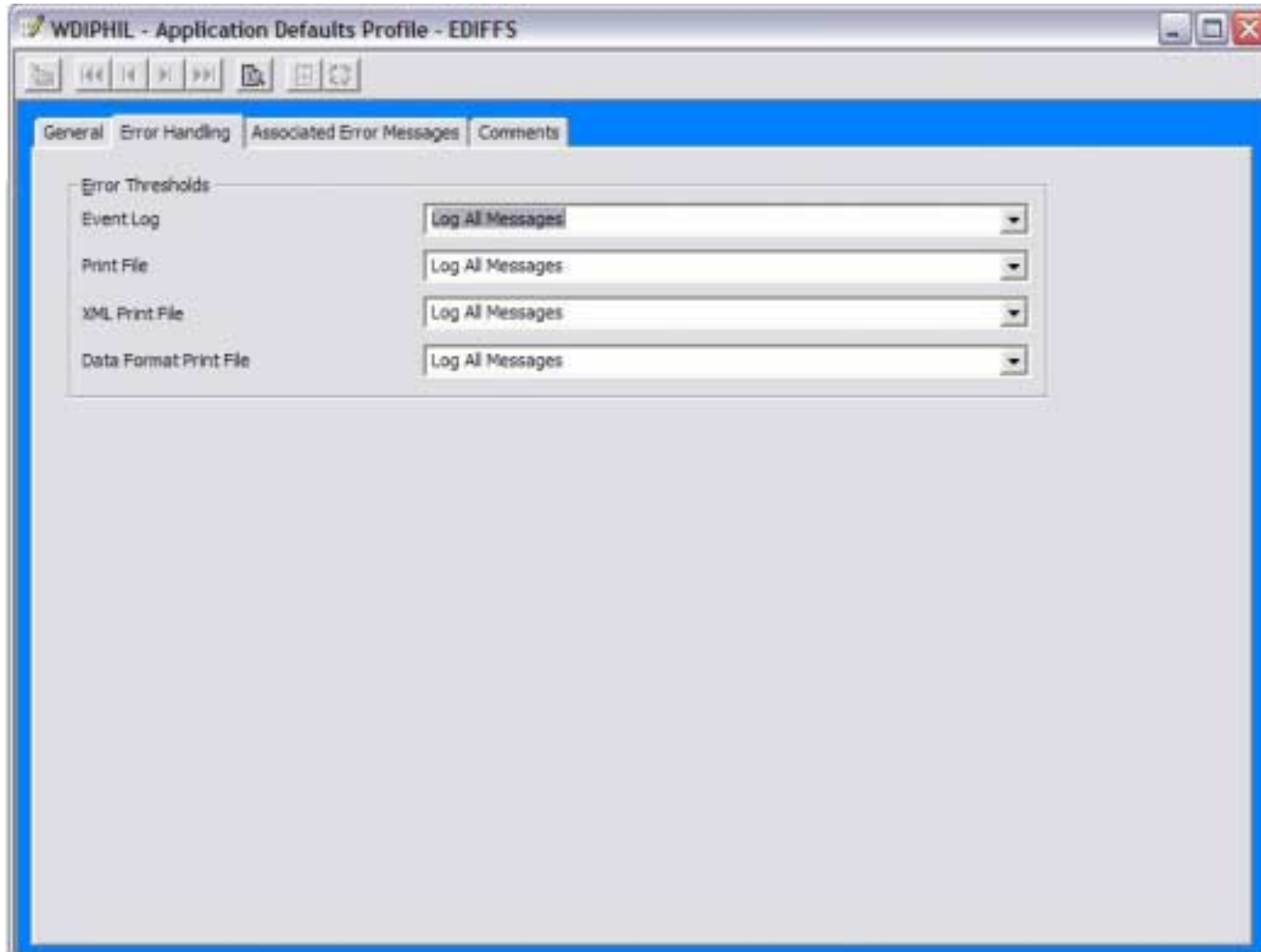
The screenshot shows a Windows-style dialog box titled "WDIPHIL - Application Defaults Profile - EDIFFS". The "General" tab is selected, showing various configuration options for the application. The fields are as follows:

- Application ID:** EDIFFS
- Description:** (Empty text box)
- Event Log Active:**
- Allow Production Rule or Usage for Test Messages:**
- Management Reporting:**
- Monitor Program:** (Empty dropdown menu)
- Century Control Year:** 10
- Alphanumeric Data Validation Table:** ALPHANUM
- Character Data Validation Table:** CHARSET
- Document Store:**
 - Save Information About All EDI Documents to the Document Store
 - Save Information About All Documents to the Document Store (all syntaxes)
 - Save Information About Successfully Translated EDI Documents to the Document Store
 - Save Information About EDI Documents that Fail Translation to the Document Store
 - Do Not Save Information to the Document Store
- Transaction Image:** Do Not Save Images of Documents
- Functional Acknowledgement Image:** Do Not Save Images of Functional Acknowledgements

Additional options on the right side of the dialog:

- Create XML Print File:**
- Create Data Format Print File:**
- End of Translation Message:**

Application Defaults Profile – Error Handling Tab



Filtering Messages To Event Log – Order of Precedence

- **Event Log Active** box not checked in the APPDEFS profile, no logging will occur
- **Write Message To Event Log** specified in the APPDEFS profile, the message will be written when it occurs regardless of severity
- **Do Not Write Message To Event Log** specified in the APPDEFS profile, the message will not be written regardless of severity
- Messages with severities that meet the **Event Log Error Threshold** in the APPDEFS profile will be written
 - ▶ Default is to log messages with severity 8 and higher

Filtering Messages To Print Files – Order of Precedence

- Utility keywords **IGNOREINFO** and **IGNOREWARN** will filter severity 0 and 4 messages respectively
- Utility keyword **FILTERMSGs** will filter specified messages with severity less than 8
- **Write Message To Print File** specified in the APPDEFS profile, the message will be written when it occurs regardless of severity
- **Do Not Write Message To Print File** specified in the APPDEFS profile, the message will not be written regardless of severity
- Messages with severities that meet the **Print File Error Threshold** in the APPDEFS profile will be written
 - ▶ Default for regular print file: Log All Messages
 - ▶ Default for XML and ADF print files: Do Not Log Messages

Event Destination Profile

- New 3.3 profile
- Used for routing print files to destinations for further processing
- Primarily this profile specifies:
 - ▶ What type of print file is to be routed (regular, XML, ADF)
 - ▶ The triggering criteria (severity threshold or specific message)
 - ▶ The destination (MQ queue, file, directory, or CICS TSQ, TDQ, or ESDS VSAM file)

Print Files To Be Routed

- The print file to be routed (whether PRTFILE, XMLPRNT, or ADFPRNT) must be able to be opened for write as well as opened for read
- Only messages that pass filtering and are written to the print file, will be used to determine whether the print file gets routed

XML Routed Print Files

- Can include a header (this is indicated by a check box in the Event Destination profile) that includes the name of the ED profile that triggered the routing, and the properties associated with the ED profile
- Include document information (within the DocInfo tags)
 - ▶ Document ID, syntax, dictionary, document
 - ▶ Sender and Receiver trading partner nickname
 - ▶ Sender and Receiver ID and qualifier

CICS Operational Considerations

- Default XML print file name: XMLPRNT
- Default ADF print file name: ADFPRNT
- Default XML and ADF print file type: TS
- These defaults can be overridden in the FFUS structure
- The size of the FFUS structure has increased from 248 to 300
- A new field within the original 248 bytes is used to indicate if the structure is 248 or 300 in length
- Current applications do not need to be changed
- Default file names (XMLPRNT and ADFPRNT) will be used unless overridden in the FFUS extension area
- Whether the XML or ADF print files are used at all, is determined in the Application Defaults profile

How a Routed Print File Might Be Handled

- z/OS Batch: A job step subsequent to WDI can attempt to open the previously established destination file, and if the file was written to by WDI, then process the data
- CICS: A destination file can be defined in the Event Destination profile as being an intra-partition TDQ, defined to trigger a CICS transaction that will process the data
- All Platforms: The destination can be defined to be an MQ queue and the data processed off the queue as desired

Summary

- Two new types of print files (XML and data format)
- New filtering mechanisms control what gets written to the print files and the event log
- Ability to route print files based on certain criteria (error message severity or the occurrence of a specific message)
- Default settings mean that current applications do not need to change