



IBM Software Group

IBM WebSphere® Data Interchange V3.3

Audit Trail



@business on demand.

Agenda

- What is the WDI Audit Trail enhancement?
- How does the new Audit Trail differ from WDI 3.2?
- How is the Audit Trail activated or configured?
- When is the Audit Trail updated?
- How is the Audit Trail viewed?
- How is the Audit Trail maintained?

What is the WDI Audit Trail enhancement?

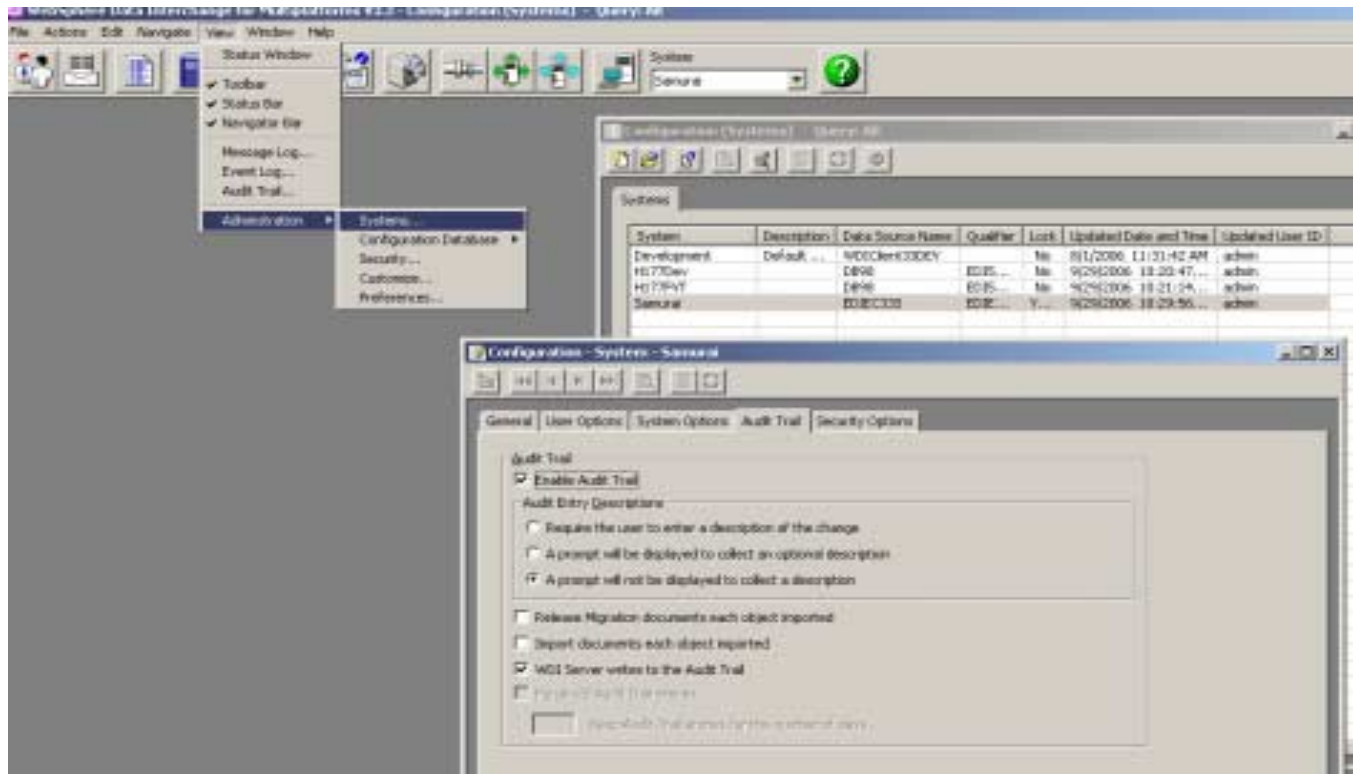
- The WDI Audit Trail logs entry for each change to a WDI object
- The Audit Trail is database / system dependent
- Controls on Audit Trail logging include
 - Making it active or inactive
 - Specifying if update reasons must be entered
 - Specifying other options
- Viewing of changes as a separate list
- A tool for maintaining the log entries is provided

How does the new Audit Trail differ from WDI 3.2?

- With WDI 3.2, only the last user, date and time of a change were logged
- Only Client changes were logged
- The log feature was not optional

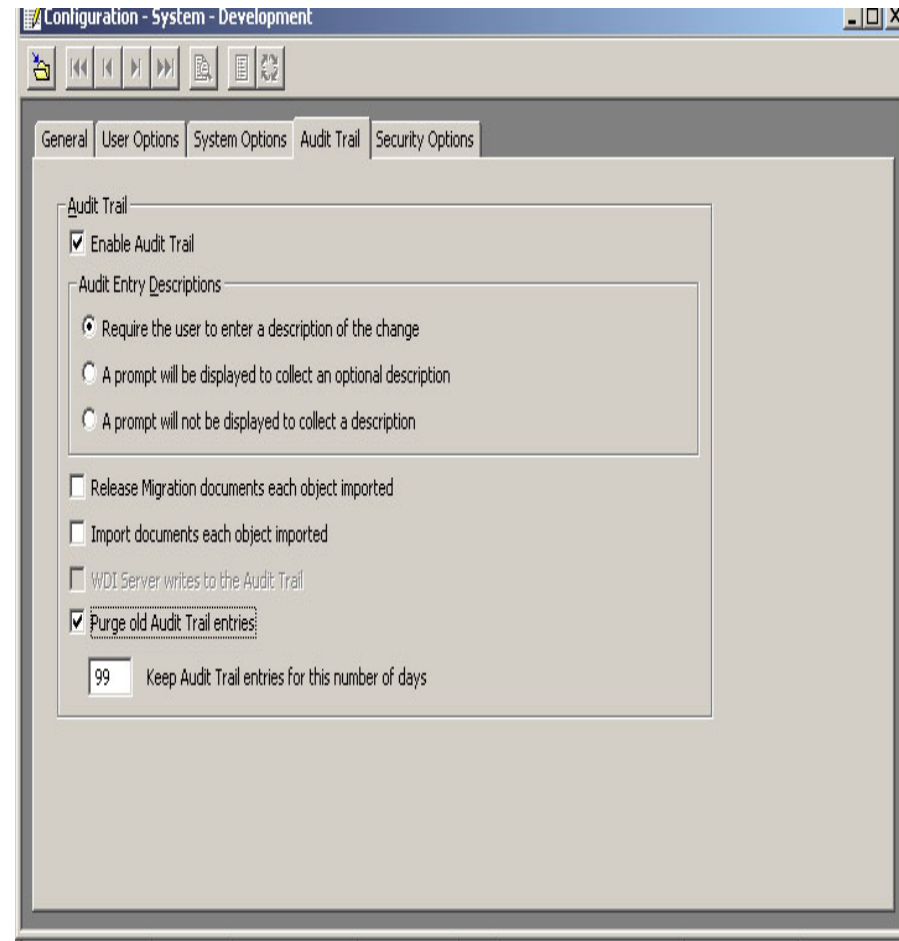
How is the Audit Trail activated or configured?

- To activate the Audit Trail on a database
 - Open the System definition of the database, and select the Audit Trail tab



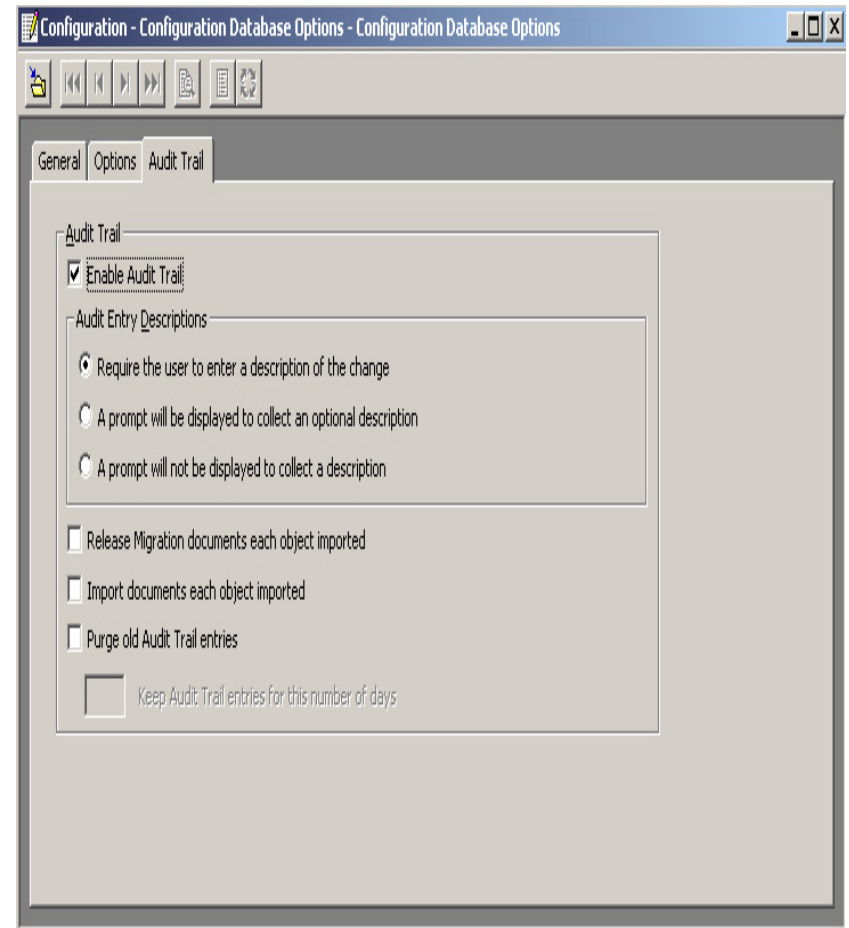
How is the Audit Trail activated or configured? (Contd.)

- Is audit trail logging active?
- Choose the option for each entry
 - Must one key a reason?
 - Is a reason optional?
 - Are reasons not required?
- Will all objects be documented?
- Should the Server update the Audit Trail on import?
- Should the Audit Trail be purged automatically after a specified number of days?
- The Development database does not support logging of Server imports.



How is the Audit Trail activated or configured? (Contd.)

- The configuration database stores Client objects, like Queries, preferences, and systems
- Options are the same as for Runtime databases, except that the Server Import option is not available

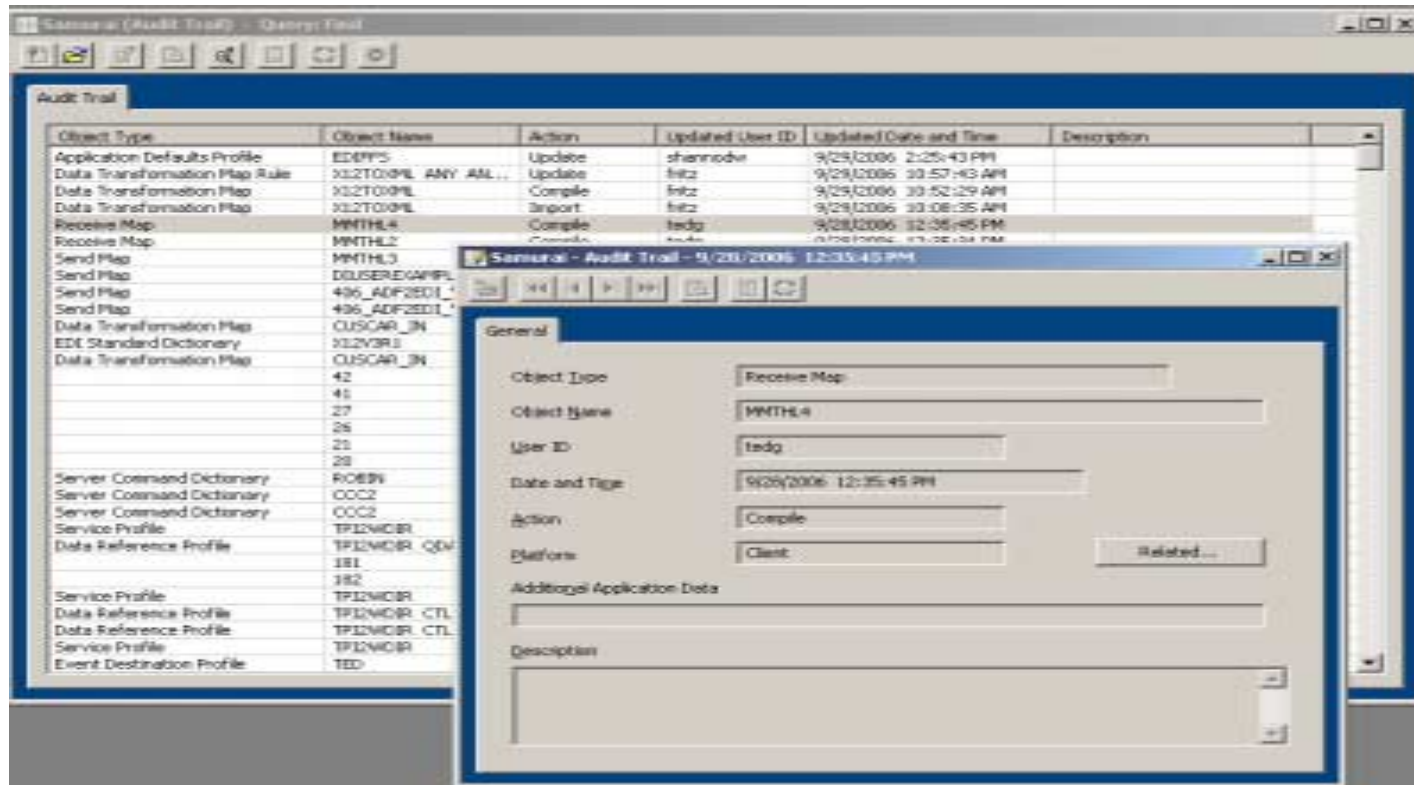


When is the Audit Trail updated?

- When enabled, Audit Trail entries are created when an object is changed
- This includes Adds, Deletes, Updates, and Imports
- Export is not logged, nor is Viewing an object
- The Server Import (PERFORM IMPORT) will update the Audit Trail if specified

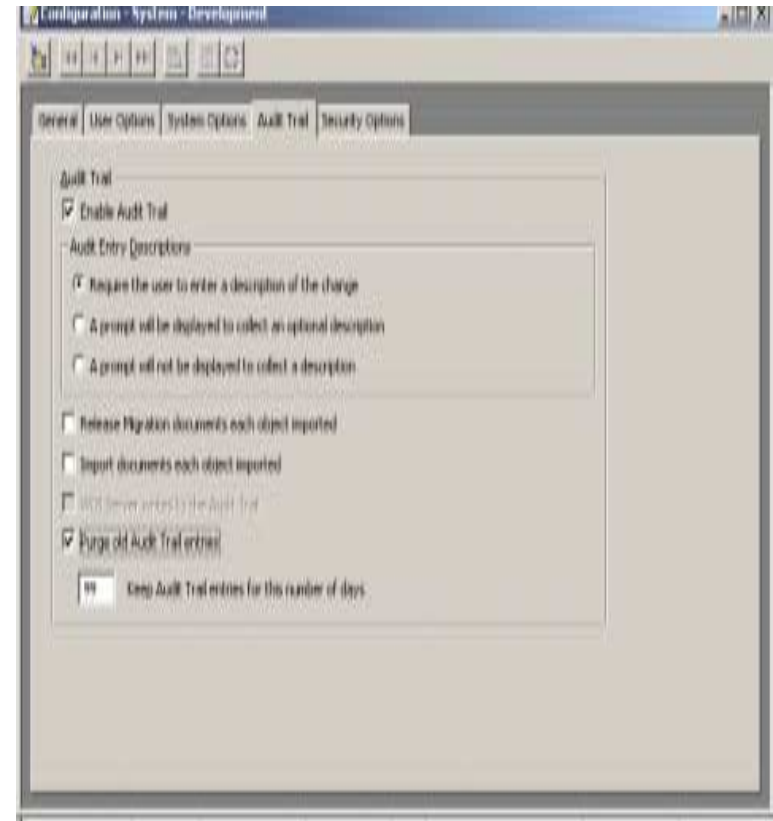
How is the Audit Trail viewed?

- With the System desired in focus, select View->Audit Trail, and the Audit Trail list window will be displayed
- Double click on an entry to Open the log entry view



How is the Audit Trail maintained?

- Audit Trail configuration allows for specification of purging the audit trail entries after a number of days
- A batch job can also be used, by way of the **PERFORM REMOVE AUDIT TRAIL WHERE ...**



Perform Remove Command

- **PERFORM REMOVE AUDIT TRAIL** LOGDATE(*starting date*) TO(*ending date*) LOGUSER(*starting user ID*)

- Examples:

```
PERFORM REMOVE AUDIT TRAIL WHERE  
LOGDATE(12/14/06) TO(12/17/06)
```

```
PERFORM REMOVE AUDIT TRAIL WHERE  
LOGUSER(USR0890)
```

Summary

- An Audit Trail is available for each database and for the Client Configuration database
- When activated, changes to WDI objects log an entry into the Audit Trail
- Server import also logs an entry into an active Audit Log
- Administrators can purge the Audit Trail DB Tables

Questions

- Thanks for your attention

Trademarks, copyrights, and disclaimers

The following terms are trademarks or registered trademarks of International Business Machines Corporation in the United States, other countries, or both:

IBM	CICS	IMS	MQSeries	Tivoli
IBM(logo)	Cloudscape	Informix	OS/390	WebSphere
e(logo)business	DB2	iSeries	OS/400	xSeries
AIX	DB2 Universal Database	Lotus	pSeries	zSeries

Java and all Java-based trademarks are trademarks of Sun Microsystems, Inc. in the United States, other countries, or both.

Microsoft, Windows, Windows NT, and the Windows logo are registered trademarks of Microsoft Corporation in the United States, other countries, or both.

Intel, ActionMedia, LANDesk, MMX, Pentium and ProShare are trademarks of Intel Corporation in the United States, other countries, or both.

UNIX is a registered trademark of The Open Group in the United States and other countries.

Linux is a registered trademark of Linus Torvalds.

Other company, product and service names may be trademarks or service marks of others.

Product data has been reviewed for accuracy as of the date of initial publication. Product data is subject to change without notice. This document could include technical inaccuracies or typographical errors. IBM may make improvements and/or changes in the product(s) and/or program(s) described herein at any time without notice. Any statements regarding IBM's future direction and intent are subject to change or withdrawal without notice, and represent goals and objectives only. References in this document to IBM products, programs, or services does not imply that IBM intends to make such products, programs or services available in all countries in which IBM operates or does business. Any reference to an IBM Program Product in this document is not intended to state or imply that only that program product may be used. Any functionally equivalent program, that does not infringe IBM's intellectual property rights, may be used instead.

Information is provided "AS IS" without warranty of any kind. THE INFORMATION PROVIDED IN THIS DOCUMENT IS DISTRIBUTED "AS IS" WITHOUT ANY WARRANTY, EITHER EXPRESS OR IMPLIED. IBM EXPRESSLY DISCLAIMS ANY WARRANTIES OF MERCHANTABILITY, FITNESS FOR A PARTICULAR PURPOSE OR NONINFRINGEMENT. IBM shall have no responsibility to update this information. IBM products are warranted, if at all, according to the terms and conditions of the agreements (e.g., IBM Customer Agreement, Statement of Limited Warranty, International Program License Agreement, etc.) under which they are provided. Information concerning non-IBM products was obtained from the suppliers of those products, their published announcements or other publicly available sources. IBM has not tested those products in connection with this publication and cannot confirm the accuracy of performance, compatibility or any other claims related to non-IBM products. IBM makes no representations or warranties, express or implied, regarding non-IBM products and services.

The provision of the information contained herein is not intended to, and does not, grant any right or license under any IBM patents or copyrights. Inquiries regarding patent or copyright licenses should be made, in writing, to:

IBM Director of Licensing
IBM Corporation
North Castle Drive
Armonk, NY 10504-1785
U.S.A.

Performance is based on measurements and projections using standard IBM benchmarks in a controlled environment. All customer examples described are presented as illustrations of how those customers have used IBM products and the results they may have achieved. The actual throughput or performance that any user will experience will vary depending upon considerations such as the amount of multiprogramming in the user's job stream, the I/O configuration, the storage configuration, and the workload processed. Therefore, no assurance can be given that an individual user will achieve throughput or performance improvements equivalent to the ratios stated here.

© Copyright International Business Machines Corporation 2006. All rights reserved.

Note to U.S. Government Users - Documentation related to restricted rights-Use, duplication or disclosure is subject to restrictions set forth in GSA ADP Schedule Contract and IBM Corp.

