



IBM Software Group

2006 B2B Customer Conference

B2B – Catch the Next Wave

ENVELOPE PROFILES, USAGE and ADVANTAGES

WebSphere. software



ON DEMAND BUSINESS™

Objectives

- Describe envelope profiles
- Discuss default envelope profiles
- Associate envelope profiles to maps
- Understand the hierarchy of envelope attributes
- Learn differences in next release
- Review an example
- Summary
- Q & A



What is an envelope profile?

- An envelope profile is used to provide specific default values for envelope attributes that are not mapped or assigned a value elsewhere in the transformation process.
- The default values are constants.
- Envelope profiles are given a name and defined based on the standard: E, I, T, U, X.



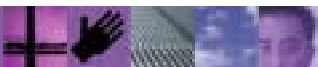
What attributes are found in an envelope profile?

- Envelope profile attributes come from elements found in the envelope standard.
- For an X12 ISA, the attributes would be ISA01, ISA02, ISA03, etc.
- For an EDIFACT UNG, the attributes would be UNG01, UNG0201, UNG0202, etc.



Default Envelope Profiles

- A default envelope profile should be created within the appropriate envelope profile type for each EDI standard maintained in the system
- Default envelope profile names match the EDI standard IDs
- For example, the EDIFACT standard EDI96A should have a corresponding E Envelope profile named EDI96A
- With the release of 3.2, default envelope profiles were included in the standard import files

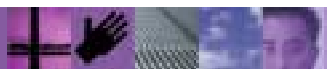
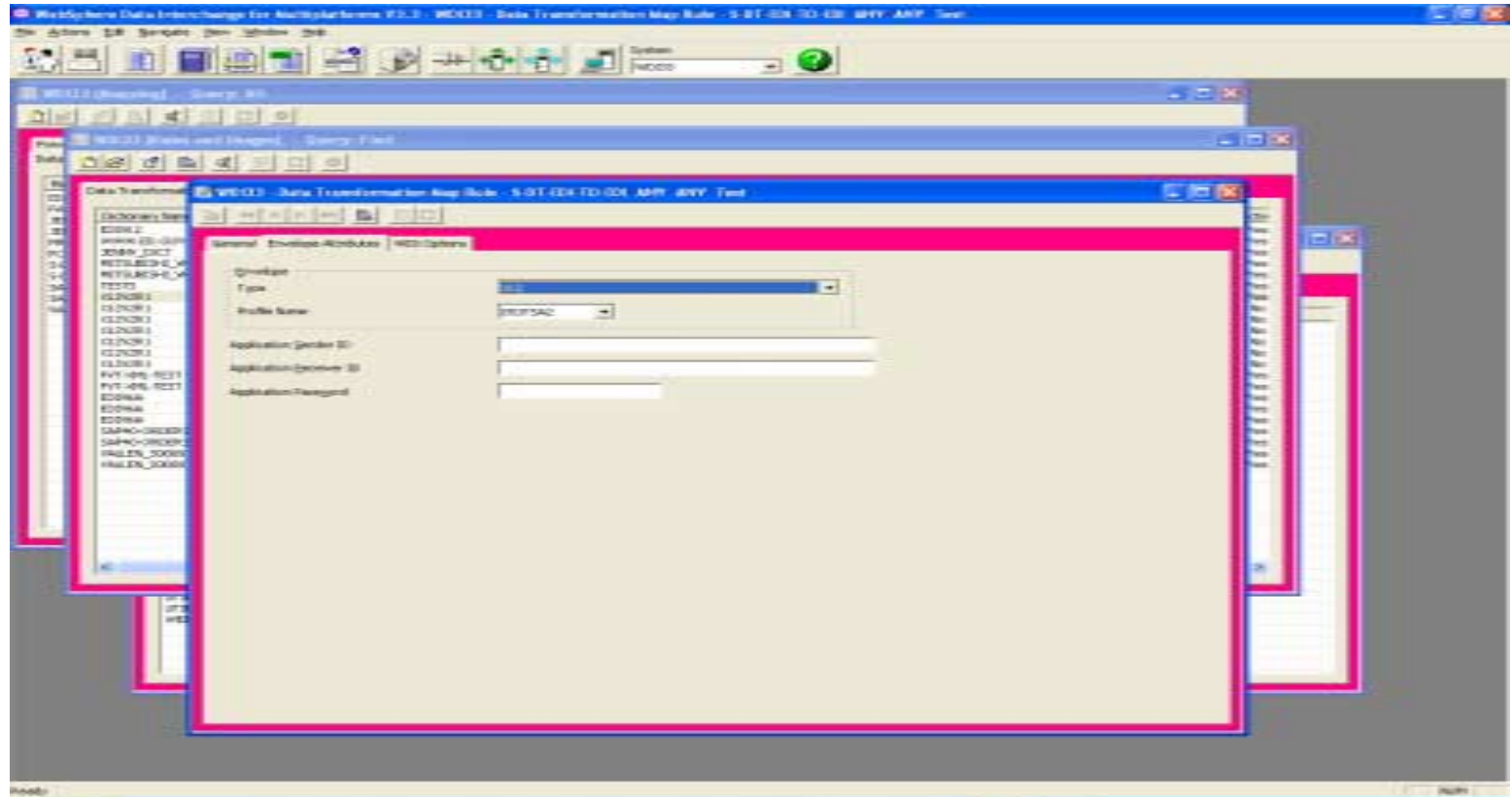


Associate Envelope Profiles to Maps

- You can also add profiles with names that do not match an EDI standard ID, and then use these names when creating Rules and Usages to override the default profile
- Envelope profiles are used by adding them to the Envelope Attributes tab of the Rules and Usages
- Select the Envelope Type and Profile Name



Example – Envelope Profile in Rule



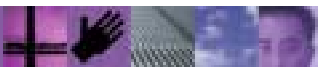
Hierarchy of Envelope Attributes

- When creating an envelope, WDI follows a hierarchy to determine what value to use for each attribute or element of the envelope
- The hierarchy (possible exceptions like GS08)
 - Special handling: date, time, count
 - Specific property value: ISA01, UNB0101, EG01
 - Generic property value: IchgSndrQl , IchgSndrId
 - Envelope profile



What's new?

- More information about each field
 - UNB0302 (Receiver ID Qualifier)
- Named according to the EDI Standard
 - UNG0202 rather than UNG03
- New EDI standard envelope fields
- Includes only fields that WDI Server will use a value from



New EDI Standard Envelope Fields

- ST03
- UNB0103, UNB0104, UNB0105
- UNB0204
- UNB0304
- UNH0206, UNH0207
- UNH0501, UNH0502, UNH0503, UNH0504
- UNH0601, UNH0602, UNH0603, UNH0604
- UNH0701, UNH0702, UNH0703, UNH0704

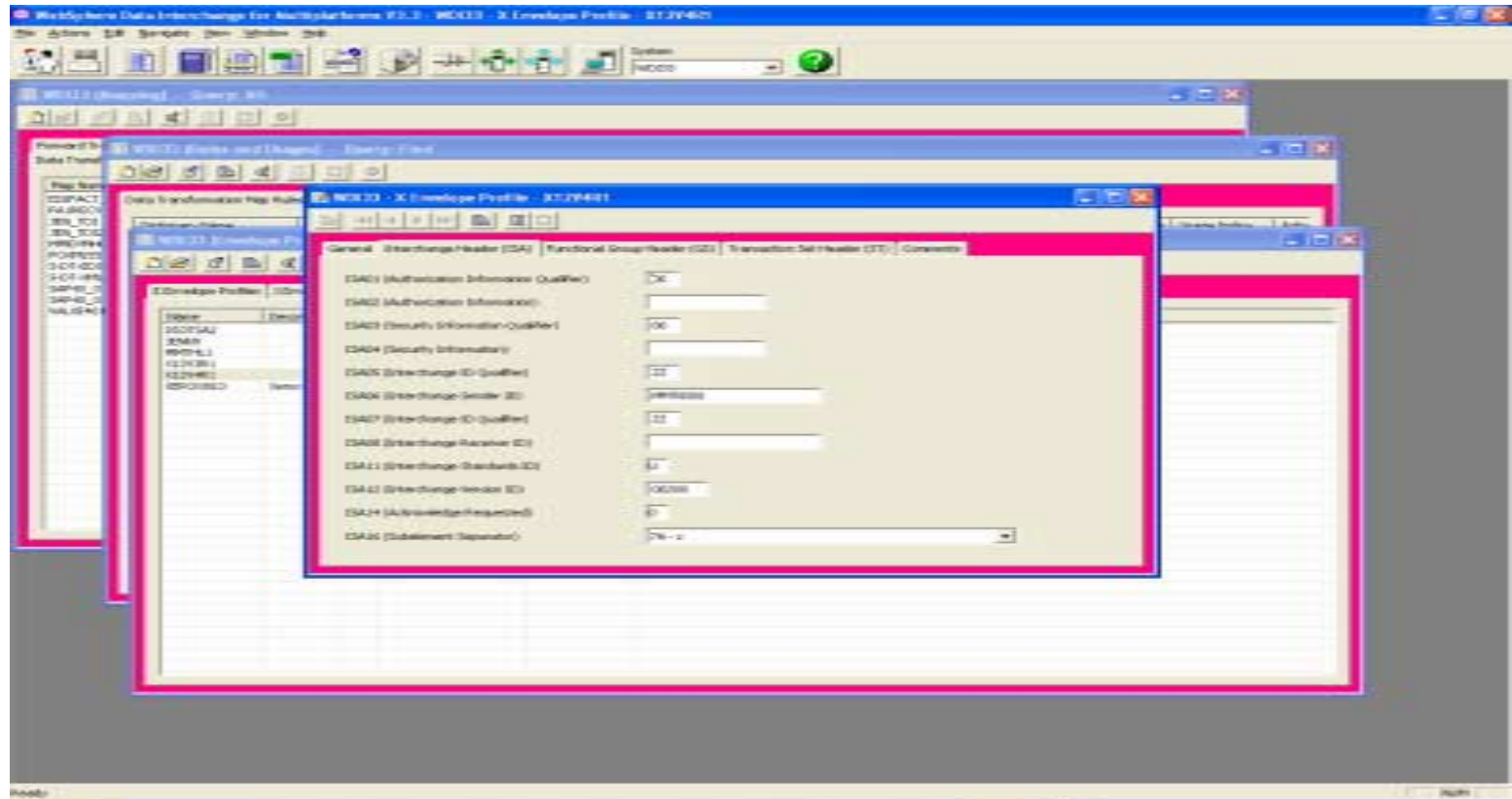


Fields No Longer Available – X12

- ISA09, GS04 (date)
- ISA10, GS05 (time)
- ISA13, GS06, ST02, SE02, GE02 , IEA02 (control number)
- ISA15 (usage indicator)
- ST01 (Transaction Set Id)
- SE01, GE01, IEA01 (number of segments)

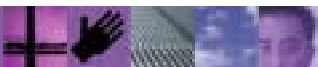


Example - X12 Envelope Profile Fields

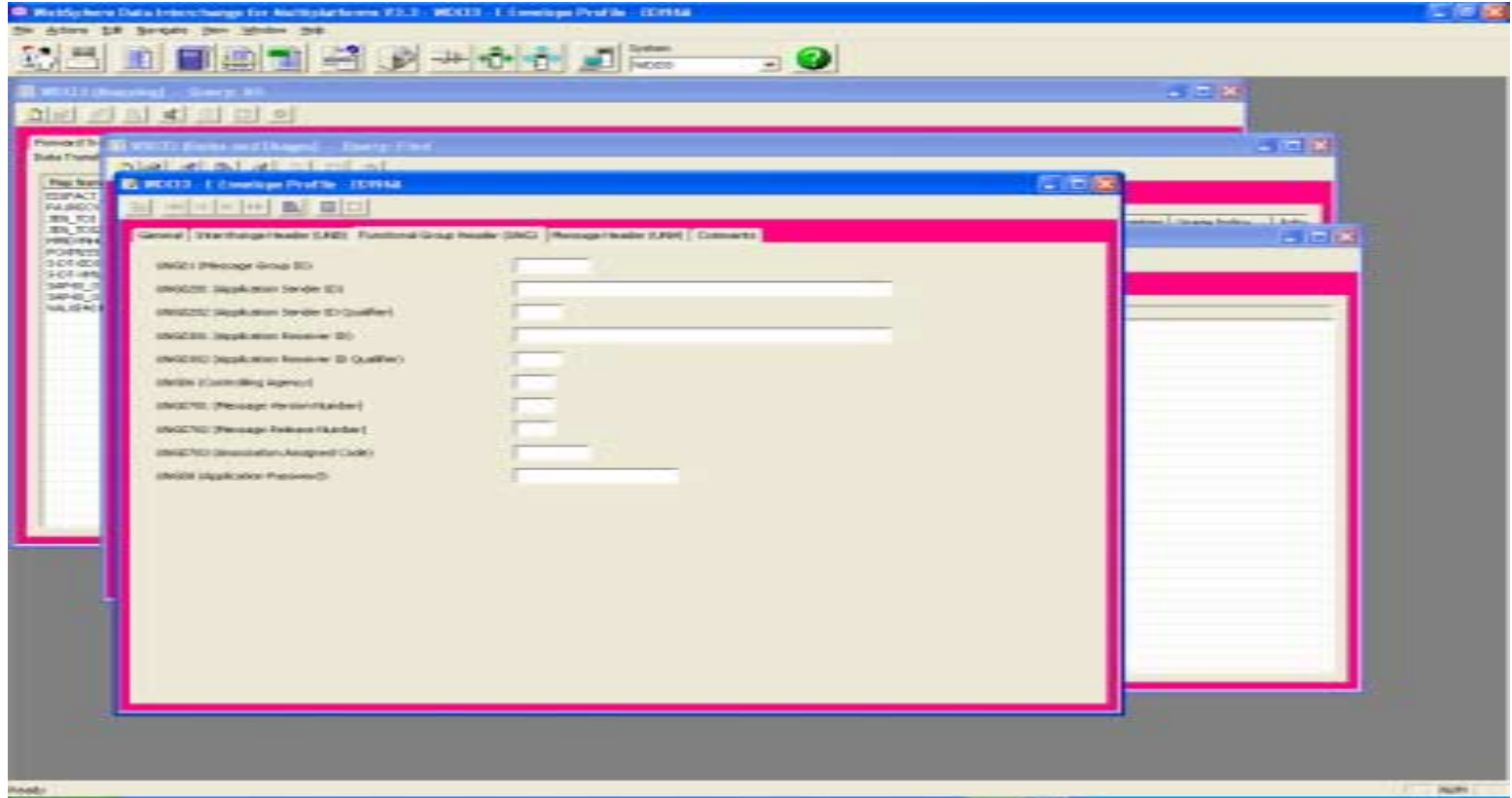


Fields No Longer Available – EDIFACT

- UNB0401, UNG0401 (date)
- UNB0402, UNG0402 (time)
- UNB05, UNH01 (control number)
- UNB11 (test indicator)
- UNG05, UNT02, UNE02, UNZ02 (reference number)
- UNH0201 (message type)
- UNH0202 (message version number)
- UNT01, UNE01, UNZ01 (number of segments)



Example - EDIFACT Envelope Profile Fields

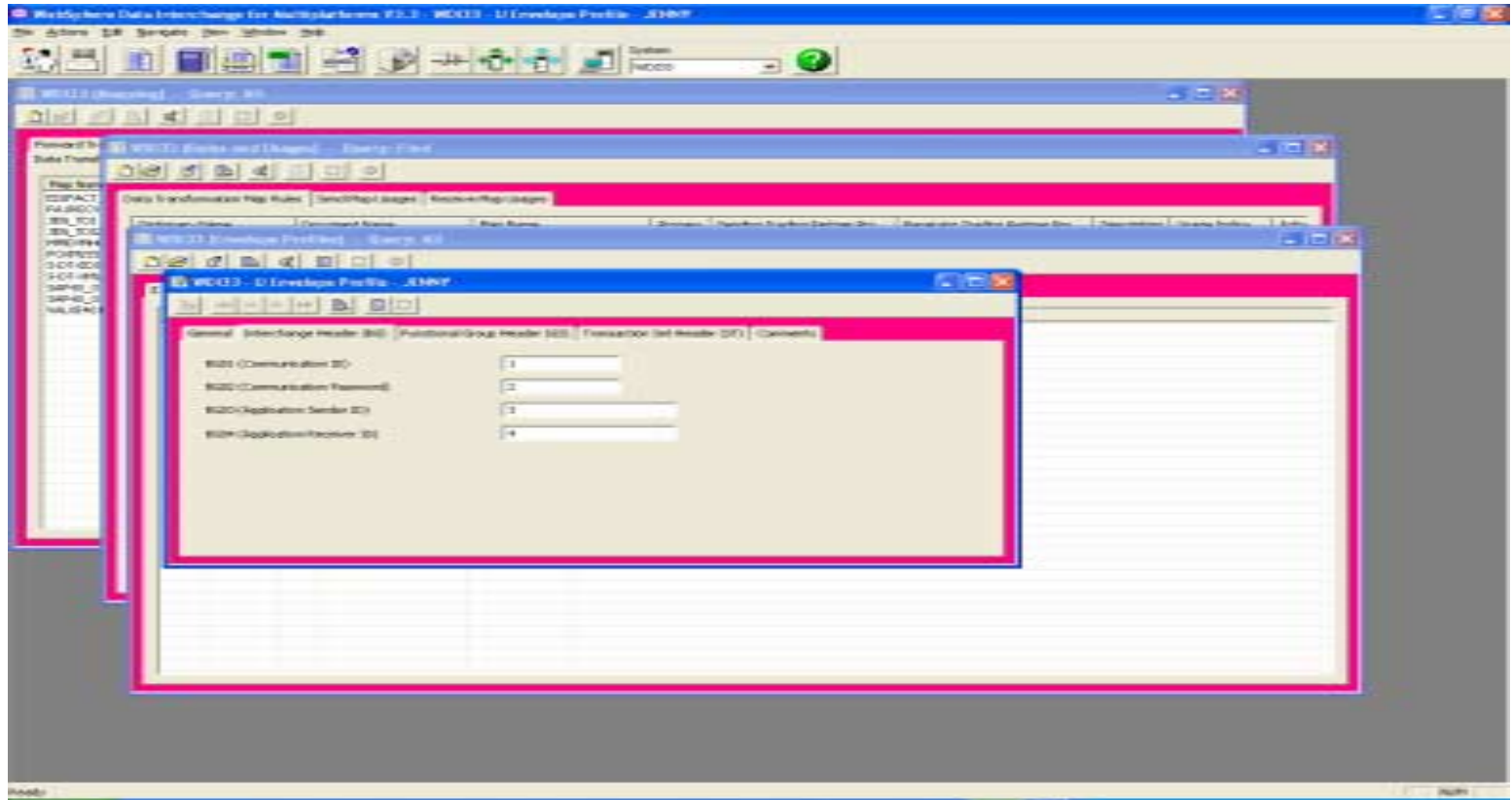


Fields No Longer Available – UCS

- BG05, GS04 (date)
- BG06, GS05 (time)
- BG07, GS06, ST02, SE02, GE02, EG01 (control number)
- ST01 (transaction set id)
- SE01, GE01, EG02, EG03, EG04 (number of segments)

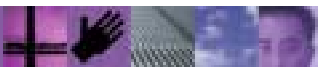


Example - UCS Envelope Profile Fields

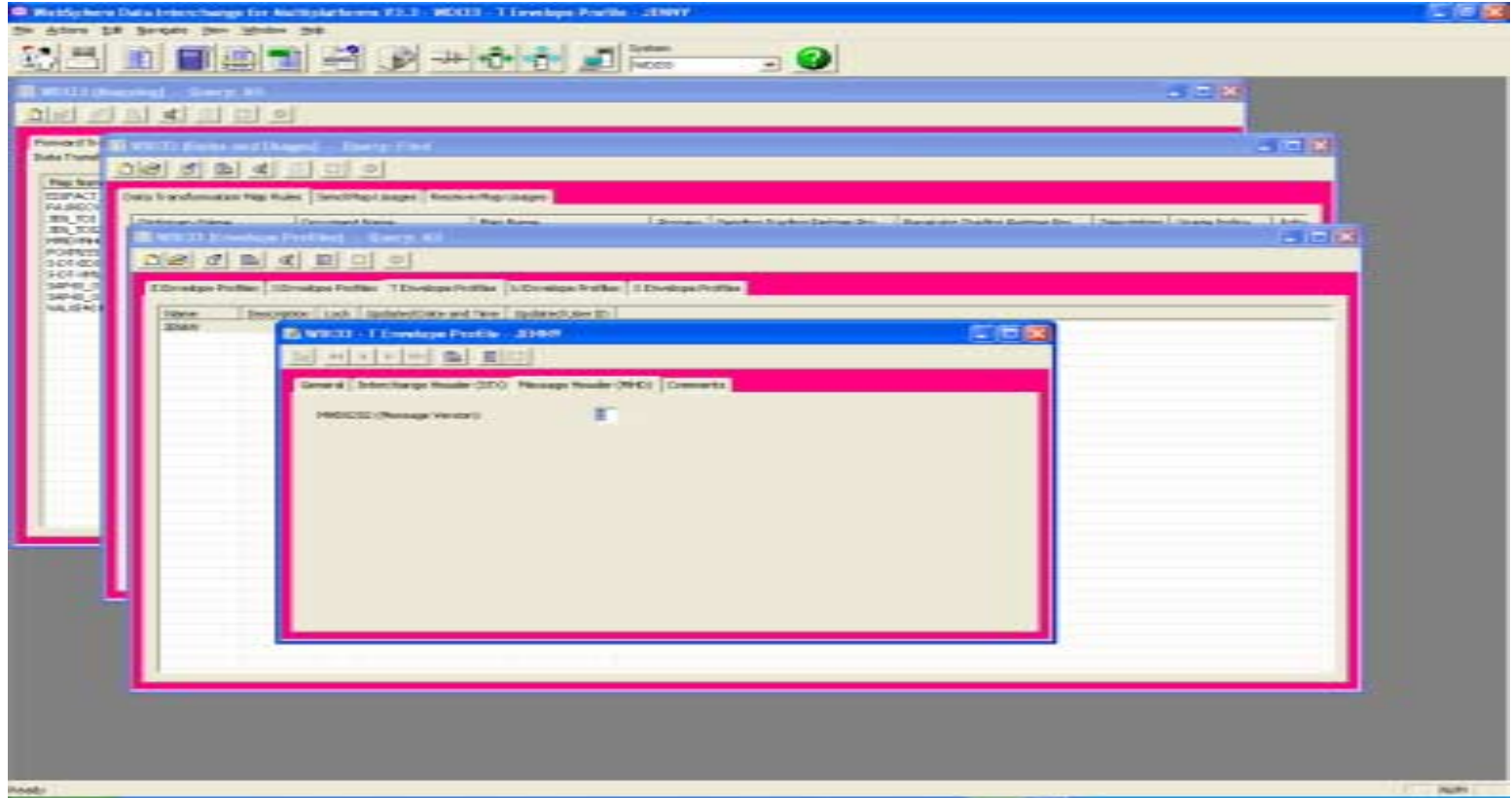


Fields No Longer Available – UNTDI

- STX0401 (date)
- STX0402 (time)
- STX05 (control reference)
- MHD01 (message reference)
- MHD0201 (message type)
- MTR01, END01 (number of segments)
- MHD03, MHD0401, MHD0402 (not used)

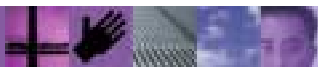


Example - UNTDI Envelope Profile Fields



Demo

- Demonstrate the usage of an envelope profile in the Rules and Usages
- Show how mapping commands can be used to override the envelope profile



Summary

- Envelope profiles are used to provide default values for the envelope segments
- Default envelope profiles are provided with the EDI standard
- Different envelope profiles can be created and added to the Rules and Usages
- WDI follows a hierarchy to determine which value is used in the envelope
- Several new envelope fields were added in the new release

