



IBM Software Group

# 2006 B2B Customer Conference

## *B2B – Catch the Next Wave*

## Query Subsystem

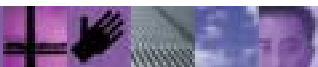
WebSphere. software

A horizontal decorative banner with various colored squares and abstract images, including a globe, a person's face, and a grid of circles.

**ON** DEMAND BUSINESS™

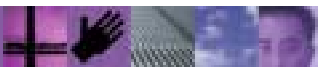
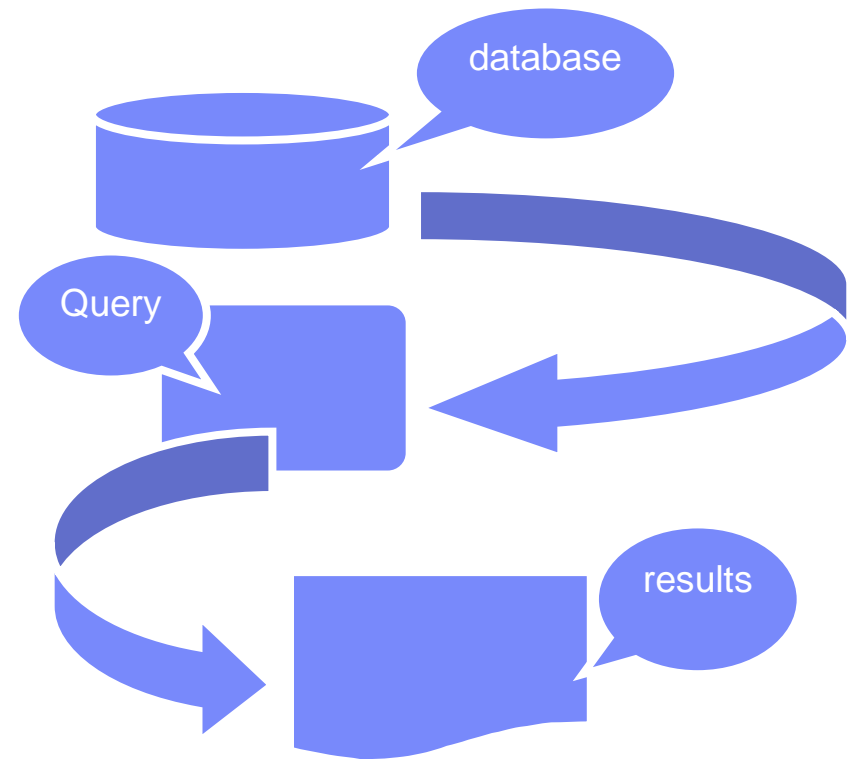
# Query Subsystem

- Benefits of Custom Queries
  - Default Queries – Find, All
  - Use cases for custom queries
- Defining a new query
  - Assigning columns
  - Sorting
  - Filtering
- Assigning the Query to a List Window
- Example
  - Message filtering query



# Query and the database

- A Query operates against the database to identify the data to be display
- Each instance of data is a row



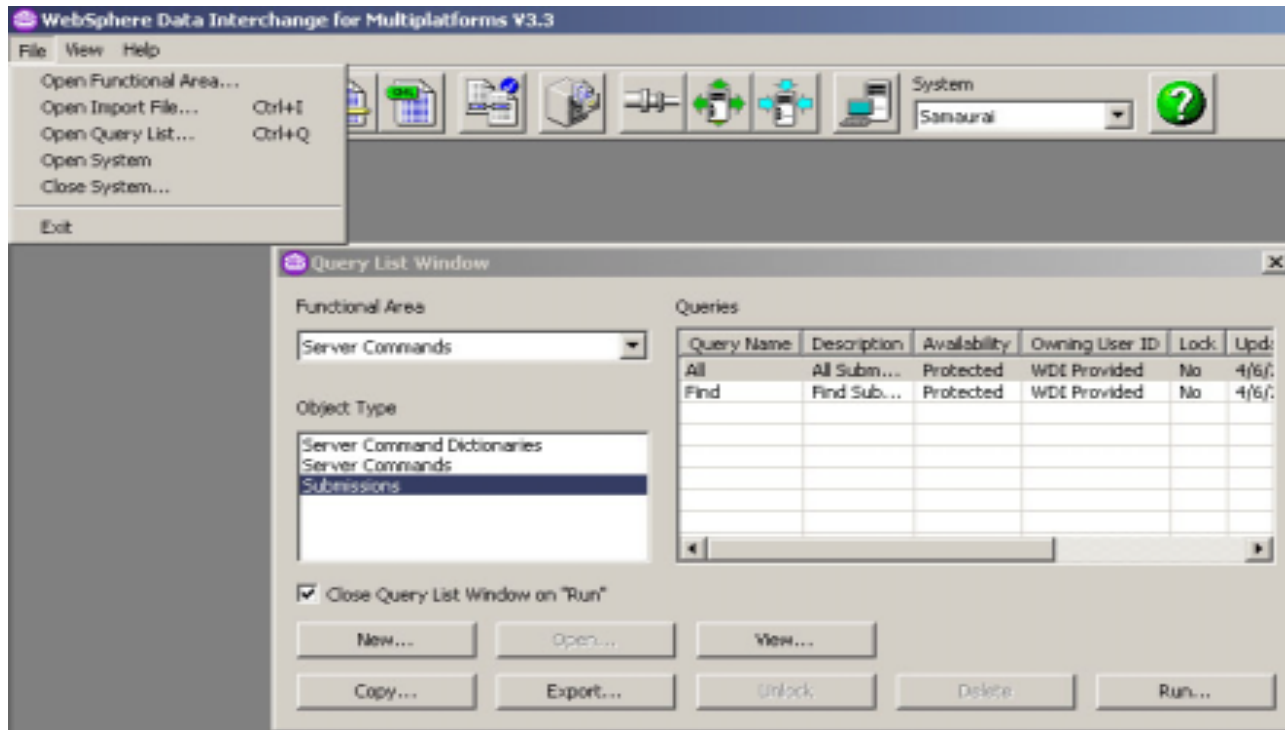
# Benefits of Custom Queries

- WDI provides a Find Query
  - Which prompts the user for a key value to select a row
- WDI provides an All Query
  - Which displays all rows for an object, e.g. Trading Partners
- Custom Query allows for
  - Selection of which data rows are displayed
  - Selection of which columns in a row are displayed
  - Reduces search time and network traffic
- Use cases for custom queries
  - Allow display of a subset of objects, e.g. all trading partners with ADMIN1 in TP user field 1
  - Allow display of all maps that begin with MMP



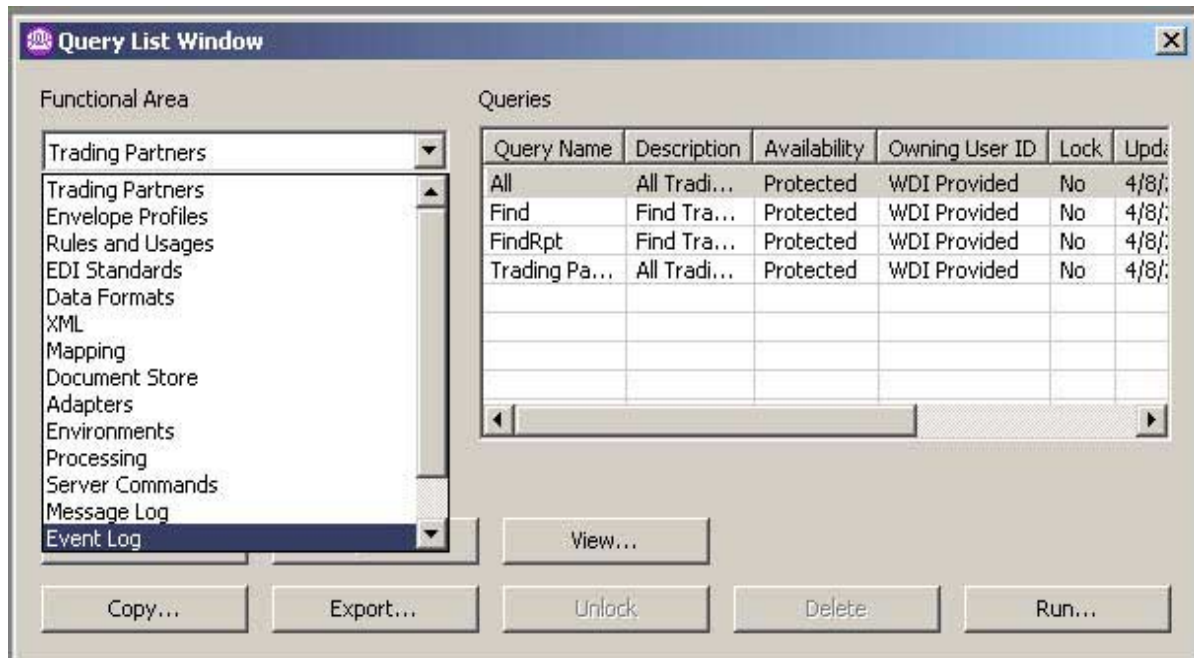
# Defining a new query

- From the File Menu, select the Open Query List functions
- Then select the Functional Area and Object Type, and click on “New”



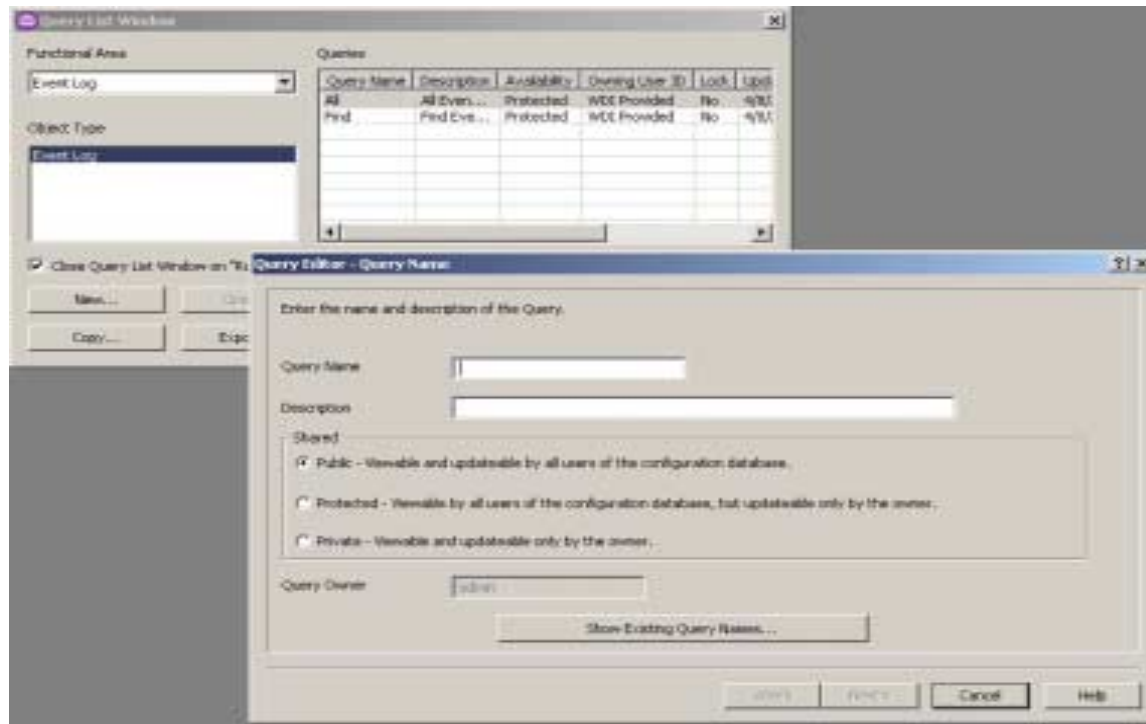
# Defining a new query

- There are a number of functional areas, select the one that represents the list you wish to customize



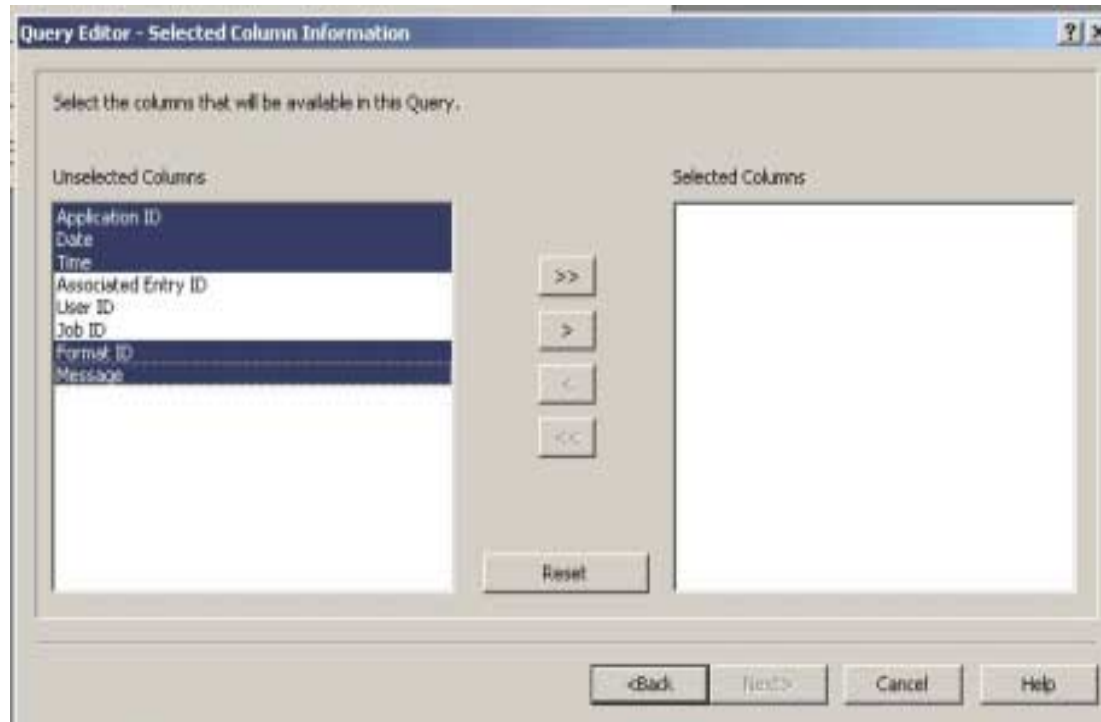
# Defining a new query

- Type the information required and click on “Next”



## Defining a new query – identifying columns to be used

- Select the columns and transfer them from “available” to “selected” with the “>” button





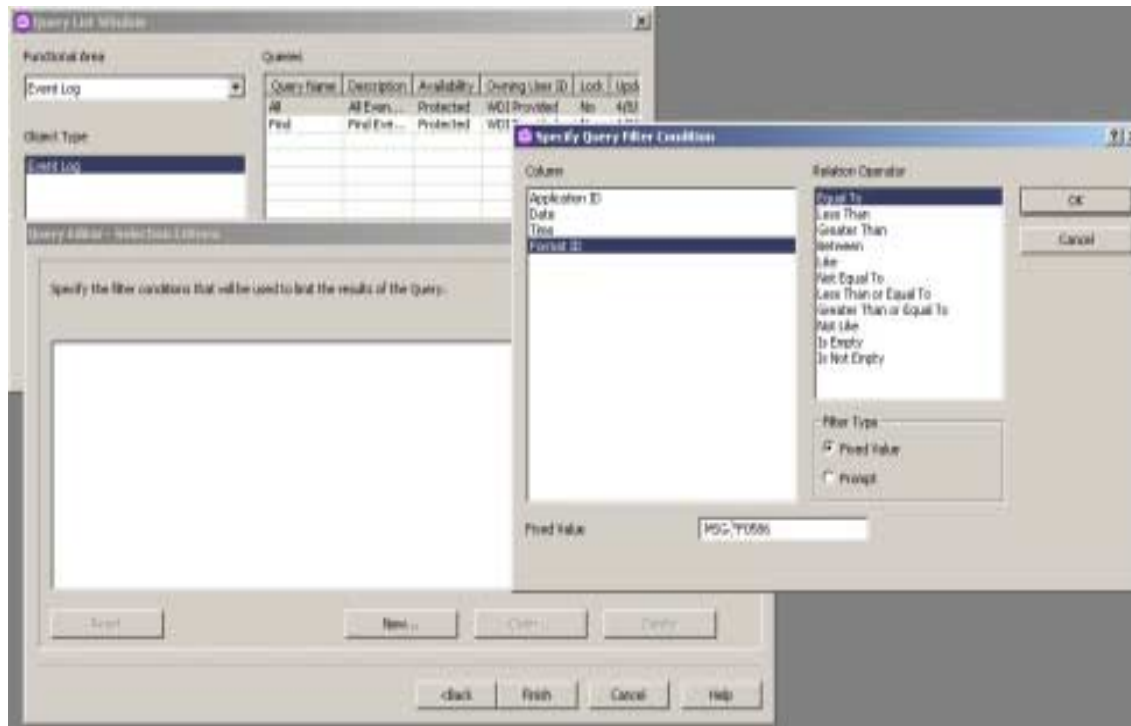
## Defining a new query – defining the column sort

- Select the columns that will sort the data and transfer them from “available” to “selected”



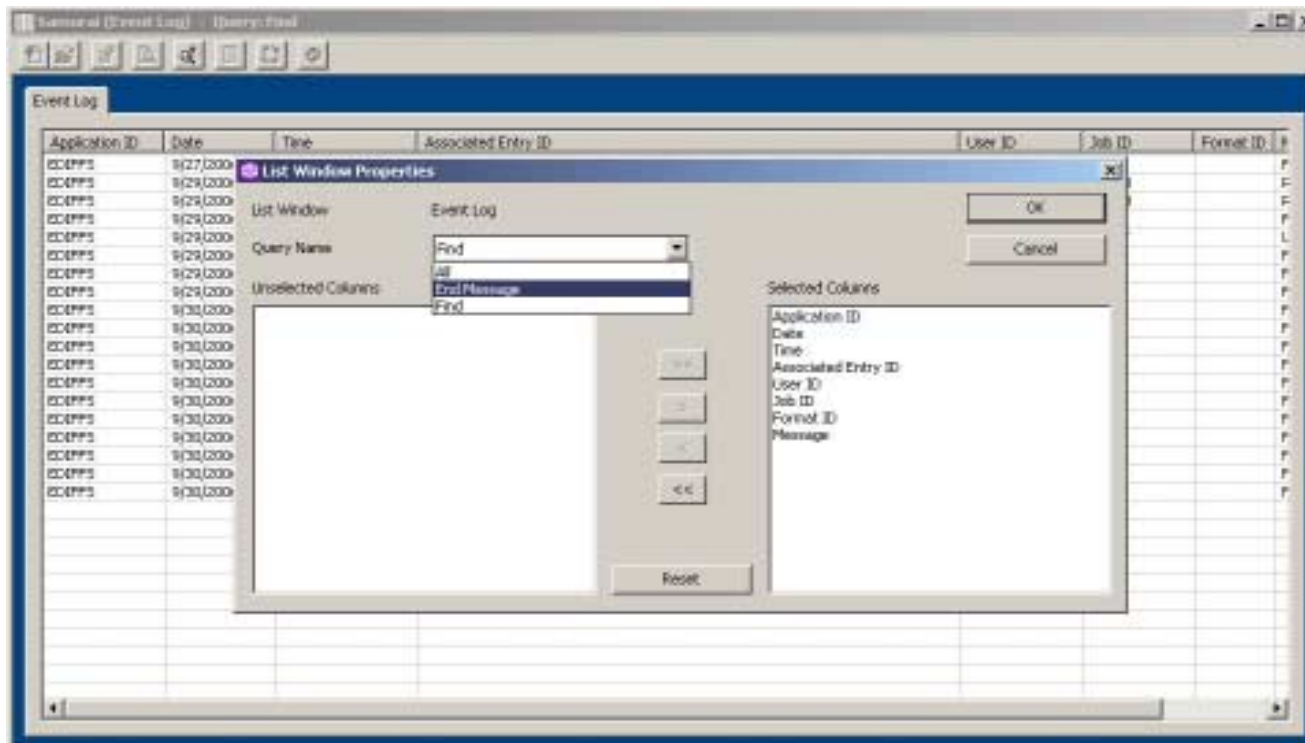
# Defining a new query – filtering data

- Filtering is defining a set of values that will “accept” or “reject” a row from the solution set – the rows that will be displayed
- Select the column to filter and the value to filter by
- Use multiple filters if needed
- When all filters have been provided, click on “Finish” to save the Query



# Assigning the Query to a List Window

- From the object List Window, select the “properties” button
- Select the query desired from the dropdown for Query name
- Click “OK”



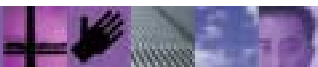
# Example

- Filter the Event Log so that only FF0586 messages are shown
- See the “End Message” Query



# Summary

- Queries determine the amount of data to be displayed
- Query subsystem is accessed from the File Menu
- Queries can restrict columns show, sort rows, and filter rows based on custom criteria
- Query is assigned to an object as a default query, and can be overridden or changed at any time



# Questions

- Thank you

