



IBM Software Group

2006 B2B Customer Conference

B2B – Catch the Next Wave

Audit Trail

WebSphere. software



ON DEMAND BUSINESS™

Topics to be Covered

- What is the WDI Audit Trail enhancement?
- How does the new Audit Trail differ from WDI 3.2?
- How is the Audit Trail activated or configured?
- When is the Audit Trail updated?
- How is the Audit Trail viewed?
- How is the Audit Trail maintained?



What is the WDI Audit Trail enhancement?

- The WDI Audit Trail logs and entry for each change to a WDI object
- The Audit Trail is database / system dependent
- Controls on Audit Trail logging include
 - Making it active or inactive
 - Specifying if update reasons must be entered
 - Specifying other options
- Viewing of changes as a separate list
- A tool for maintaining the log entries is provided



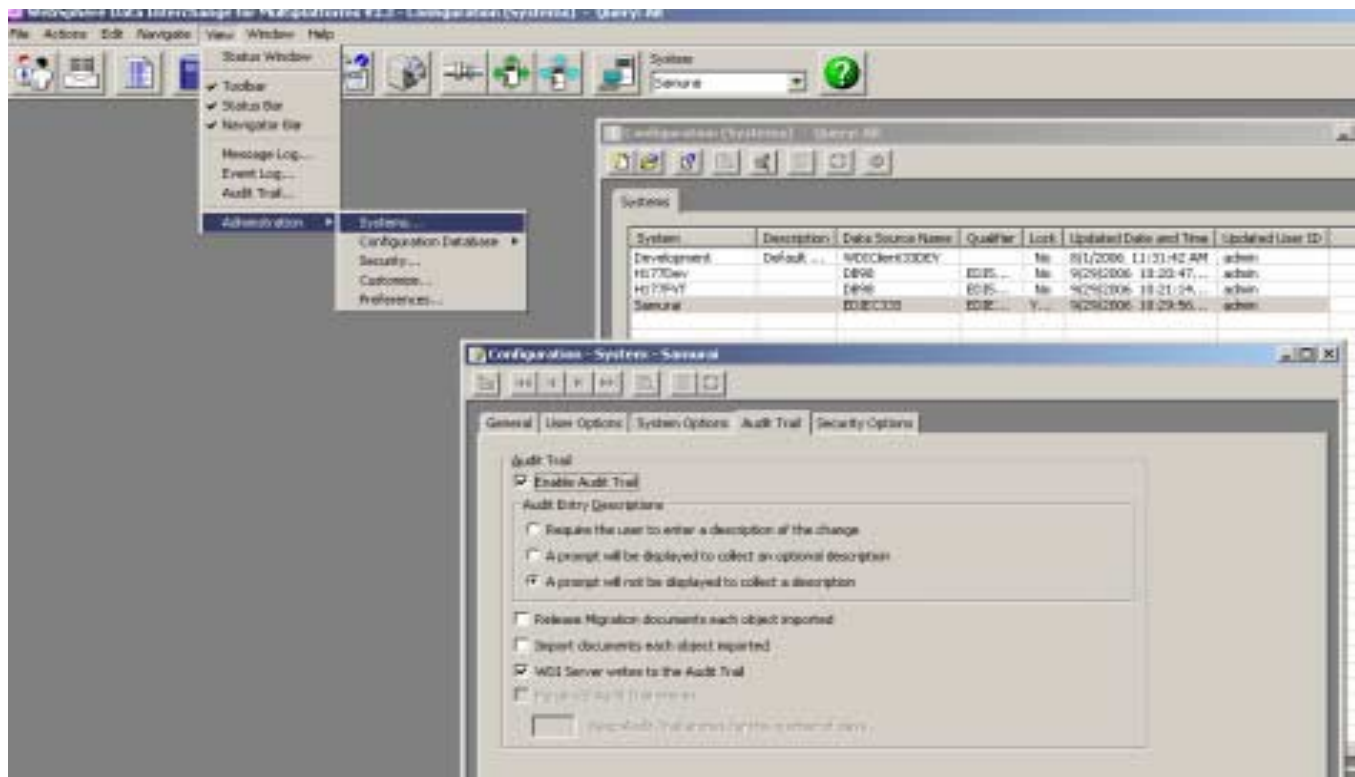
How does the new Audit Trail differ from WDI 3.2?

- With WDI 3.2, only the last user, date and time of a change were logged
- Only Client changes were logged
- The log feature was not optional



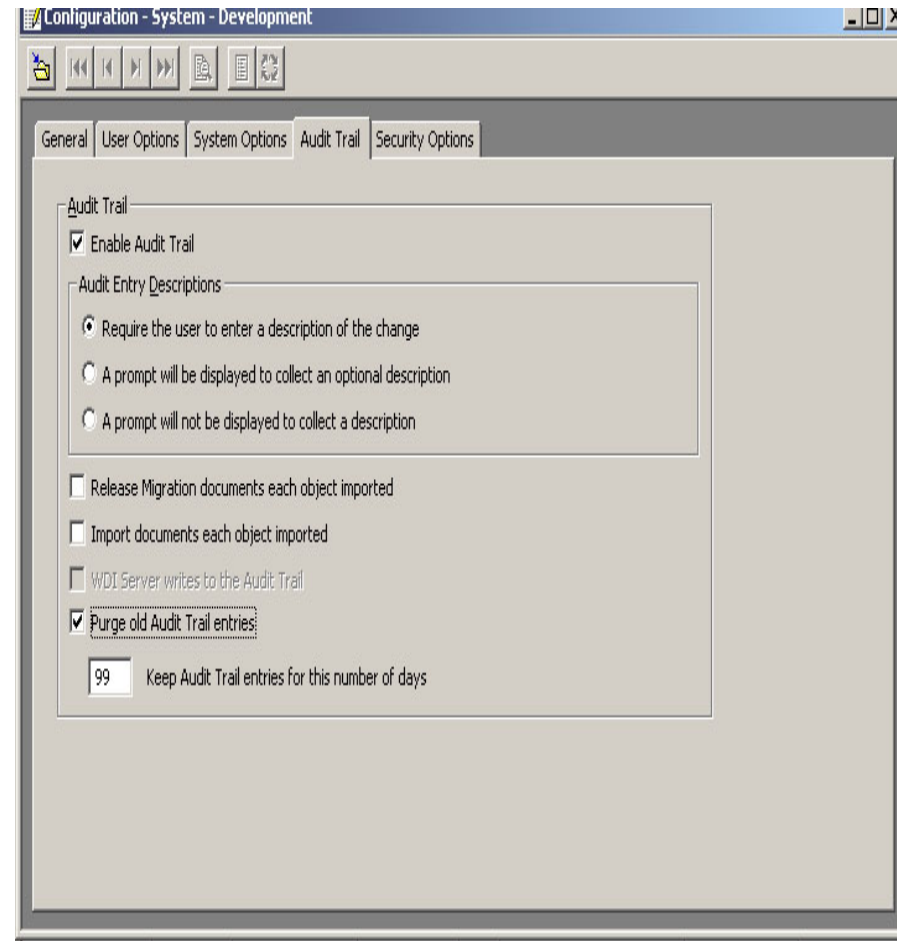
How is the Audit Trail activated or configured?

- To activate the Audit Trail on a database
 - Open the System definition of the database, and select the Audit Trail tab



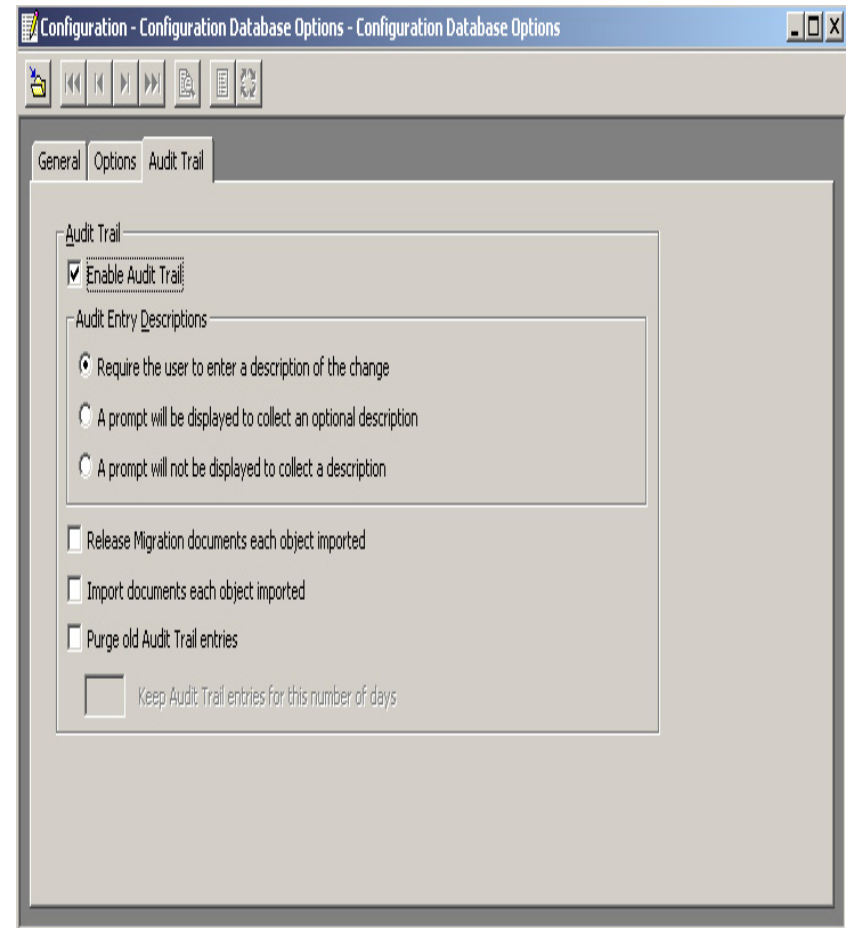
How is the Audit Trail activated or configured?

- Is audit trail logging active?
- Choose the option for each entry
 - Must one key a reason?
 - Is a reason optional?
 - Are reasons not required?
- Will all objects be documented?
- Should the Server update the Audit Trail on import?
- Should the Audit Trail be purged automatically after a specified number of days?
- The Development database does not support logging of Server imports.



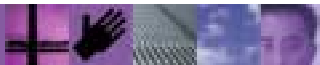
How is the Audit Trail activated or configured?

- The configuration database stores Client objects, like Queries, preferences, and systems
- Options are the same as for Runtime databases, except that the Server Import option is not available



When is the Audit Trail updated?

- When enabled, Audit Trail entries are created when an object is changed
- This includes Adds, Deletes, Updates, and Imports
- Export is not logged, nor is Viewing an object
- The Server Import (PERFORM IMPORT) will update the Audit Trail if specified



How is the Audit Trail viewed?

- With the System desired in focus, select View->Audit Trail, and the Audit Trail list window will be displayed
- Double click on an entry to Open the log entry view

The screenshot shows the 'Audit Trail' window with the following table:

Object Type	Object Name	Action	Updated User ID	Updated Date and Time	Description
Application Defaults Profile	EDFFPS	Update	shannodw	9/29/2006 2:25:43 PM	
Data Transformation Map Rule	XL2TD09L ANY ALL...	Update	frtz	9/29/2006 10:57:43 AM	
Data Transformation Map	XL2TD09L	Compile	frtz	9/29/2006 10:52:29 AM	
Data Transformation Map	XL2TD09L	Import	frtz	9/29/2006 10:08:35 AM	
Receive Map	MNTHL4	Compile	tedg	9/28/2006 12:35:45 PM	
Receive Map	MNTHL2	Compile	tedg	9/28/2006 12:35:45 PM	
Send Map	MNTHL3	Compile	tedg	9/28/2006 12:35:45 PM	
Send Map	DUSERE(W)PL	Compile	tedg	9/28/2006 12:35:45 PM	
Send Map	496_ADF2EDL_	Compile	tedg	9/28/2006 12:35:45 PM	
Send Map	496_ADF2EDL_	Compile	tedg	9/28/2006 12:35:45 PM	
Data Transformation Map	CUSCAR_IN	Compile	tedg	9/28/2006 12:35:45 PM	
EDE Standard Dictionary	XL2V0R3	Compile	tedg	9/28/2006 12:35:45 PM	
Data Transformation Map	CUSCAR_IN	Compile	tedg	9/28/2006 12:35:45 PM	
	42				
	41				
	27				
	26				
	21				
	20				
Server Command Dictionary	ROBRV	Compile	tedg	9/28/2006 12:35:45 PM	
Server Command Dictionary	CCC2	Compile	tedg	9/28/2006 12:35:45 PM	
Server Command Dictionary	CCC2	Compile	tedg	9/28/2006 12:35:45 PM	
Service Profile	TF12V0R	Compile	tedg	9/28/2006 12:35:45 PM	
Data Reference Profile	TF12V0R_QEV	Compile	tedg	9/28/2006 12:35:45 PM	
	181				
	182				
Service Profile	TF12V0R	Compile	tedg	9/28/2006 12:35:45 PM	
Data Reference Profile	TF12V0R_CTL	Compile	tedg	9/28/2006 12:35:45 PM	
Data Reference Profile	TF12V0R_CTL	Compile	tedg	9/28/2006 12:35:45 PM	
Service Profile	TF12V0R	Compile	tedg	9/28/2006 12:35:45 PM	
Event Destination Profile	TED	Compile	tedg	9/28/2006 12:35:45 PM	

The secondary window shows the details for the entry with Object Name 'MNTHL4':

General

Object Type: Receive Map

Object Name: MNTHL4

User ID: tedg

Date and Time: 9/28/2006 12:35:45 PM

Action: Compile

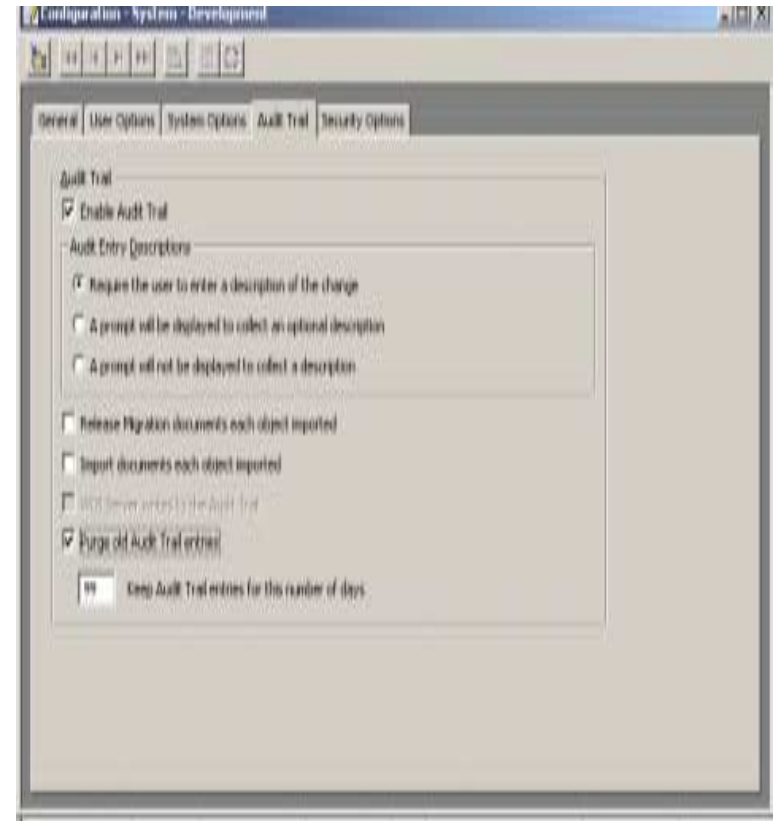
Platform: Client

Additional Application Data:

Description:

How is the Audit Trail maintained?

- Audit Trail configuration allows for specification of purging the audit trail entries after a number of days
- A batch job can also be used, by way of the **PERFORM REMOVE AUDIT TRAIL WHERE ...**



Summary

- An Audit Trail is available for each database and for the Client Configuration database
- When activated, changes to WDI objects log an entry into the Audit Trail
- Server import also logs an entry into an active Audit Log
- Administrators can purge the Audit Trail DB Tables



Questions

- Thanks for your attention

