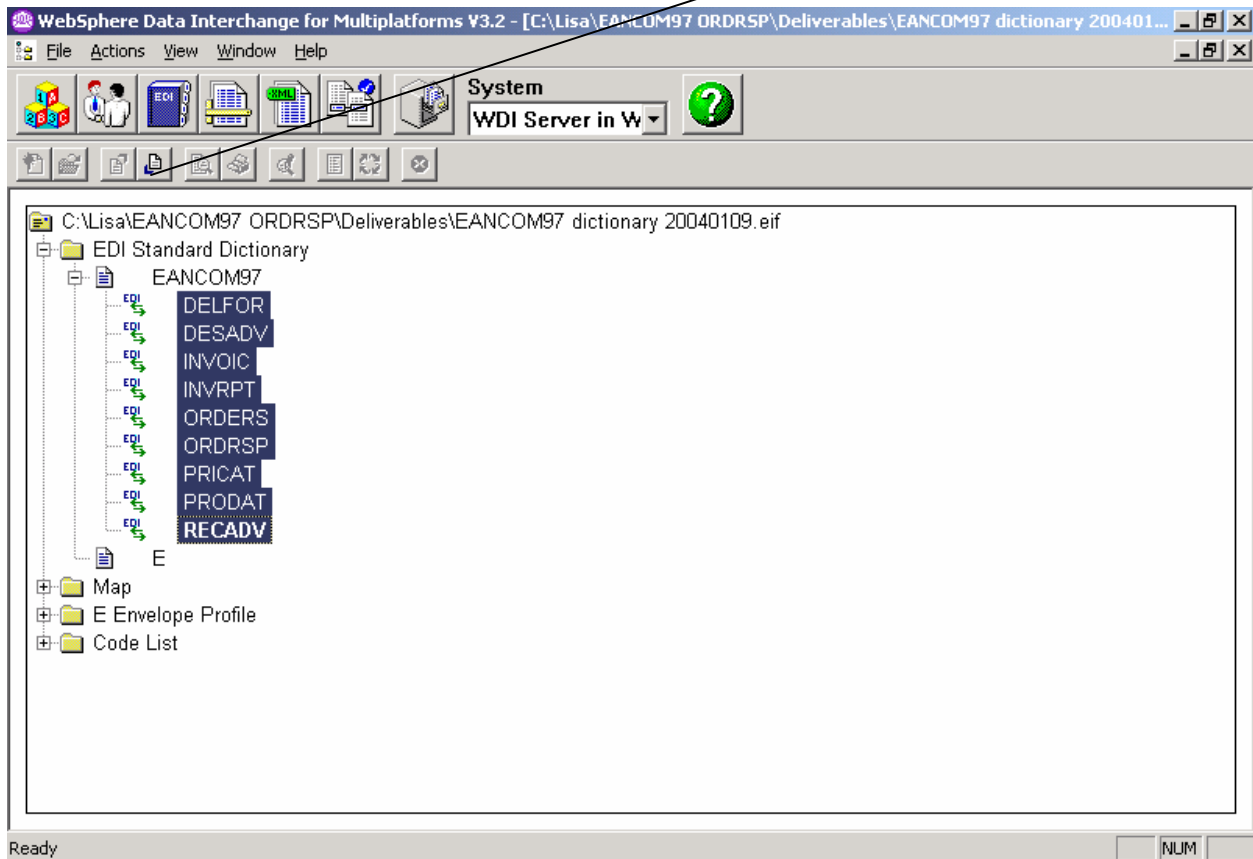


Import the standards

- Detach the standard .eif file on your harddrive.
- In WDI, select File, Open Import File, and select the .eif file you detached above.
- Open the file that says 'EDI Standard Dictionary', then expand EANCOM97 to see the transactions. Select them all (hold down the Cntl key while selecting each one), and once they are all selected, click on the Import button (or from the menu, click on Actions, then Import).



Select the appropriate EDI system to receive them into and click OK.

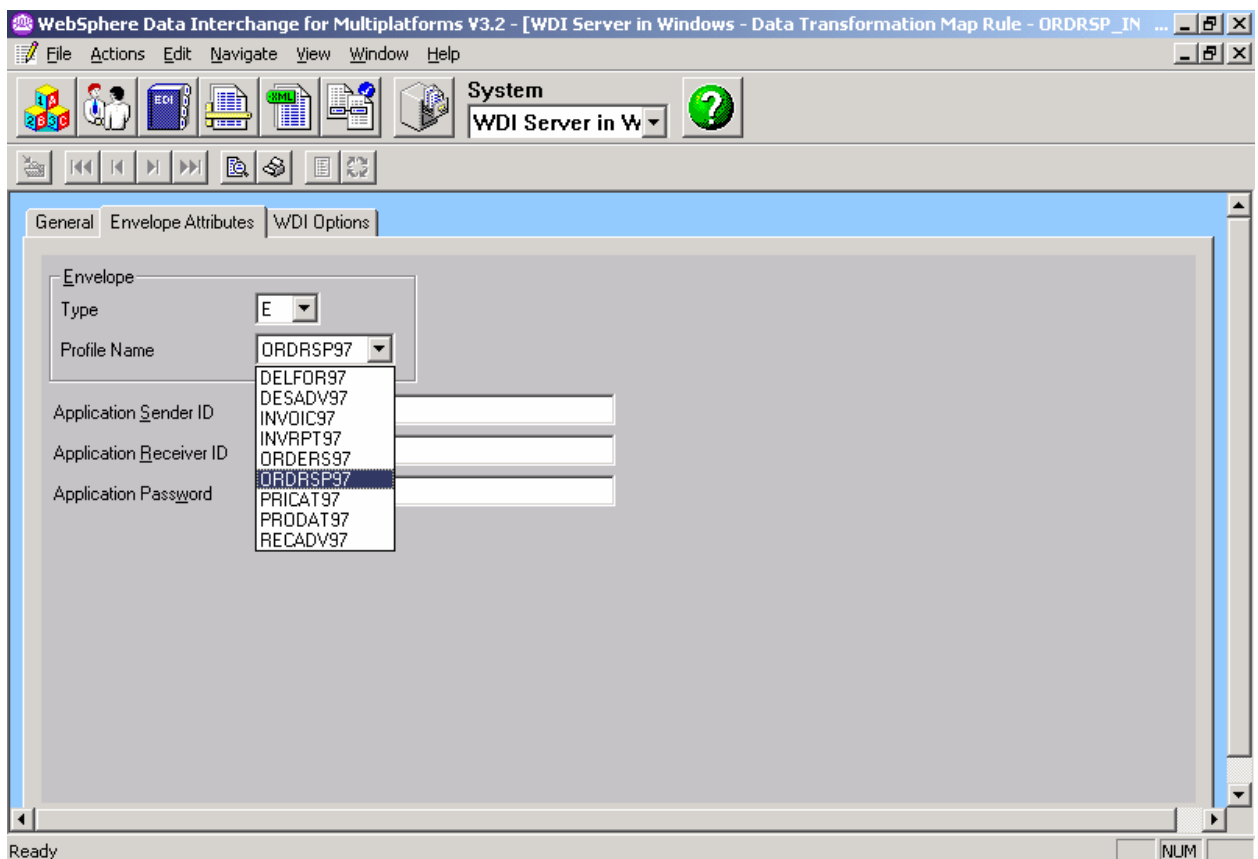
You will also need to import everything in the E standard, as it contains the standard envelope profiles. You can do so using the instructions above.

Once the import is complete:

- Click on EDI Standards to open that window, or refresh it (View, Refresh) if you already have it open. Make sure you have a dictionary named EANCOM97. Open it and click on Transactions. Make sure you have DELFOR, DESADV, INVOIC, INVRPT, ORDERS, ORDRSP, PRICAT, PRODAT, and RECADV.
- Click on the File drop down menu and select Open Query List. Select 'EDI Standards' for the functional area. Select 'Code Lists' for the Query Type. Select 'Find' for the Query List and click on Run. On the Specify Filter Values pop-up window, for the Code Lists like, put %EA% and click OK. This will display only the Code lists that end with EA. You should have 211 of them.

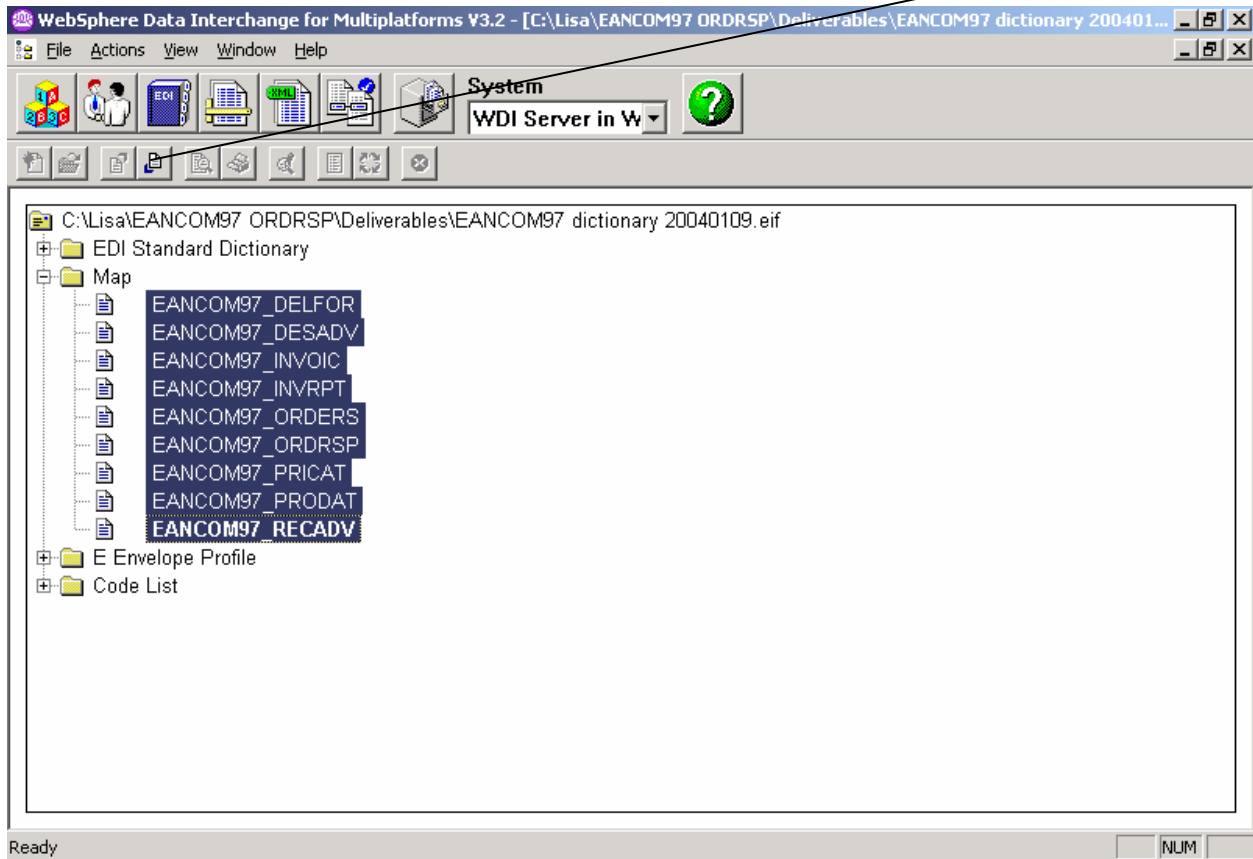
- If you don't then the import did not complete successfully. I exported the code lists separately in the event that this happens. Go through the import step again but this time select the "Code Lists" from the import file and import those.
 - You can click on the first one, then scroll to the bottom of the list, hold the SHIFT key down and click on the last one – this will select all of the code lists to be imported.
 - Click on the import key to import the entire list group of lists. Since some may have been successfully imported previously, WDI will ask if you want to replace the previous code list with the one you're currently importing.
 - Say 'Yes' to each one that it asks about.
 - Once this is done, Run the Query List on Code Lists like %EA% again to verify that you have all 211 of the code lists.

Just a note about the envelope profiles. I had to create 1 for each transaction because of the UNH S009_0057 Association assigned code being different for each transaction. The appropriate one will need to be referenced on the rule of the data transformation map. See below. (Note: These will need to be imported from the .eif file you downloaded).



Import Validation Maps into WDI

Detach the .eif file onto your hard drive. In WDI Client, click on File, Open Import File. Select both maps (select one using the mouse and hold down the Shift key OR the Control Key and select the other one with the mouse). Then click on Import Files



Select the appropriate EDI system to import them into and click OK. Once the import is complete, you should see them on the Validation Maps tab in the Mapping Window.

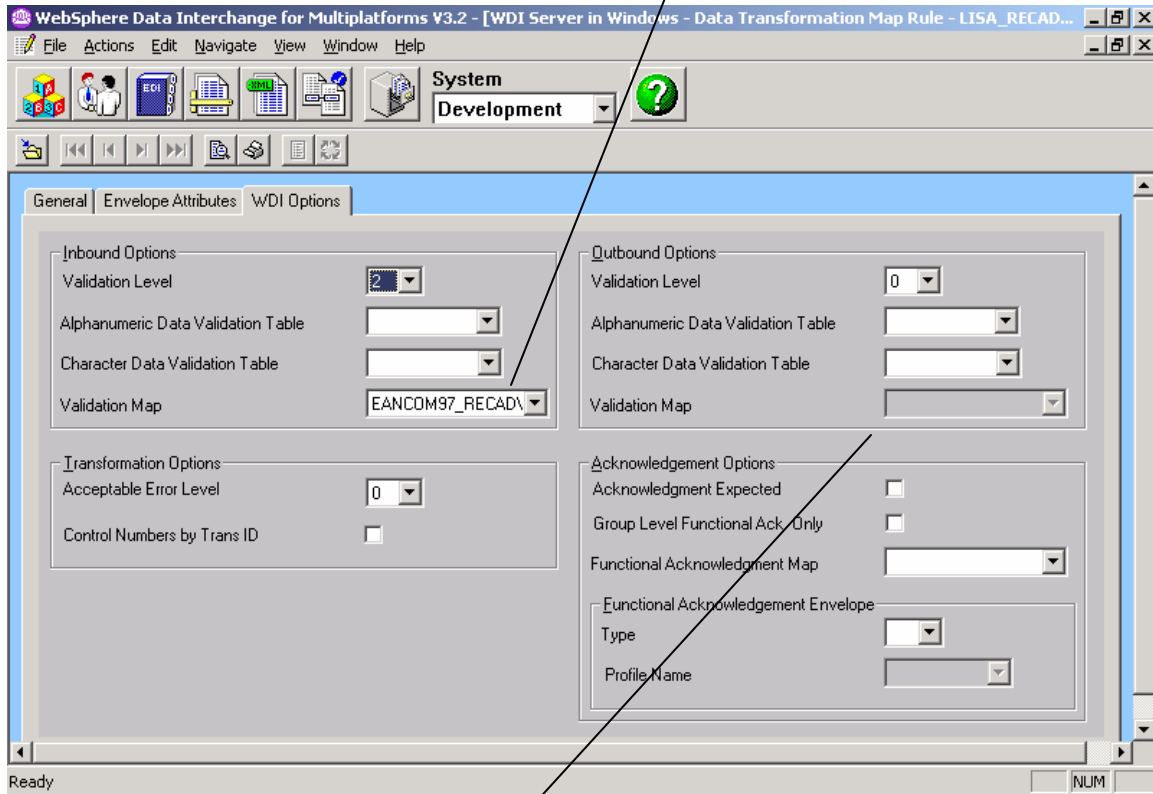
Referencing a Validation Map on a Rule

For each of the transactions being provided for this project, the validation map will need to be referenced on the map rule (formerly known as the usage). On the WDI Options tab, there's a drop-down list for Validation Maps. Validation maps can only be used to validate EDI. The drop-down list will be gray for the direction that does NOT use EDI.

For inbound EDI, the EDI data is validated against the validation map before it is translated using the data transformation map. If validation errors are found, data translation will not take place.

For outbound EDI, the data translation takes place first, then the outbound EDI is validation against the validation map referenced on the map rule.

This is a sample of how it would look for inbound EDI.



Notice that the validation map field is gray for the outbound side because this particular map is Inbound EDI to data format.

Here's an example of how to reference a validation map for outbound EDI.

