
WAREHOUSE MANAGER CLIENT

STRATEGY® 4.x

Quick Start Guide



0601

TABLE OF CONTENTS



CHAPTER 1: WELCOME TO WAREHOUSE MANAGER CLIENT.....	5
WHAT'S THE PURPOSE OF THIS GUIDE?	5
WHO SHOULD READ THIS GUIDE?.....	5
WHAT DOCUMENTATION & RESOURCES ARE AVAILABLE?.....	5
Books	5
Online Help	6
WHAT IS WAREHOUSE MANAGER CLIENT?.....	6
Alias Manager	7
Analyzer OLAP	7
License Manager.....	7
Profiles.....	7
Resource Manager	7
Security Manager.....	7
CHAPTER 2: GETTING STARTED.....	8
THREE WAREHOUSE MANAGER CLIENT METHODS	8
ODBC Data Sources	8
Method 1: Warehouse Manager Client Explorer.....	8
Method 2: Warehouse Manager Wizards	10
Method 3: Fast Paths	10
USING THE METHODS TO ACCESS FEATURES	11
MORE INFORMATION	11
CHAPTER 3: DATA ADMINISTRATOR.....	12
WHAT IS A DATA ADMINISTRATOR?.....	12
To Grant Data Administrator Privileges.....	12
MORE INFORMATION	13
CHAPTER 4: PROFILES	14
GROUP, USER, AND *PUBLIC PROFILES	14
User Level Control	14
Group Level Control.....	14
Public Level Control.....	14
To View AS/400 Profiles	14
To Create a New AS/400 User Profile	15
To Create a New AS/400 Group Profile.....	16
To Change an AS/400 Profile.....	16
To Change an AS/400 User Profile to a Group Profile	17
To Move AS/400 User Profiles Between Groups	17
MORE INFORMATION	17

CHAPTER 5: SECURITY	18
STEPS TO APPLYING SECURITY	18
SHOWCASE AND AS/400 SECURITY	18
SHOWCASE AND THIRD PARTY SECURITY	19
JD Edwards	19
Infinium	19
SERVER OPTIONS	19
To Manage Server Options for a Server Library (Explorer)	19
LIBRARY, TABLE, AND COLUMN SECURITY	20
To Apply Library, Table, or Column Security (Explorer)	21
More Information	21
ROW SECURITY (WAREHOUSE MANAGER PRODUCTS ONLY)	21
To Apply Row Security (Explorer)	22
More Information	22
APPLICATION SECURITY	22
To Apply Application Security (Explorer):	23
More Information	23
MORE INFORMATION	24
CHAPTER 6: RESOURCE SETTINGS	25
RESOURCE SETTINGS	25
Resource vs. Security Settings	26
To Apply Resource Settings (Explorer)	26
MORE INFORMATION	27
USING DEFAULT PROFILES TO APPLY RESOURCES TO PROFILES	27
CHAPTER 7: ALIASES	28
WHAT ARE ALIASES?	28
To Manage Library, Table, and Column Aliases (Explorer)	29
MORE INFORMATION	29
Alias Questions and Tips	30
CHAPTER 8: ANALYZER OLAP	31
ANALYZER OLAP FUNCTIONALITY	31
To Add Essbase/400 Databases for Analyzer Users	31
SYSTEM MANAGER	31
System Manager and Analyzer	32
System Manager and Analyzer Designer	32
To Grant System Manager Privileges	32
MORE INFORMATION	32
CHAPTER 9: REPORTS & AUDITING	33
WAREHOUSE MANAGER QUERIES AND REPORTS	33
Important Setup Information for System Queries	33
AUDITING	34
Step 1: Set Up and Run the Audit	34
Step 2: Analyze the Audit Information	34
Step 3: Make Resource Changes	35
MORE INFORMATION	35

CHAPTER 10: LICENSING	36
CONCURRENT LICENSING	36
PER-SEAT LICENSING	36
To View Per-Seat Licenses in Use	37
To Remove a Per-Seat License.....	37
To Add or Change a Password for an Application.....	37
To View Who is Currently Using an Application	37
MORE INFORMATION.....	38

WELCOME TO WAREHOUSE MANAGER CLIENT

What's the Purpose of This Guide?

This guide introduces you to Warehouse Manager Client by providing the following:

- **Results.** See how you can apply Warehouse Manager Client directly to your job and business to solve your business problems. We have included examples, business problems, scenarios, tips, tricks, and design guidelines.
- **Step by step instruction.** We want to give you enough information to get you started, so we've provided steps for some basic tasks. For additional step by step instruction, see the Warehouse Manager Client online Help.
- **Direction.** This guide does not duplicate the Warehouse Manager Client online Help, but rather intends to provide a launch pad to get you started. As a result, we may direct you to other sources of documentation and learning avenues.

Who Should Read This Guide?

Warehouse Manager Client users are primarily ShowCase STRATEGY administrators. These are people responsible for setting up security, auditing to monitor AS/400 usage, or applying aliases to AS/400 objects. If you are an experienced Warehouse Manager Client user, this guide can help you become a more productive user by learning the quickest and best ways to accomplish tasks you may already know how to do.

What Documentation & Resources Are Available?

In addition to this guide, Warehouse Manager Client documentation includes books, online Help, miscellaneous online publications, and sample databases.

Books

Warehouse Manager Client documentation includes the following books, which are available in Adobe Acrobat Portable Document Format (.pdf) on the ShowCase STRATEGY Installation CD and on the ShowCase STRATEGY menu on your PC.



• **Installation Guide.** The *Installation Guide* explains how to install ShowCase STRATEGY server and PC software and includes a release overview with enhancements, release notes, and general deployment information.



• **Administrator's Guide.** The *Administrator's Guide* explains how to maintain the ShowCase STRATEGY AS/400 software (Warehouse Manager Server and Essbase/400).

Online Help

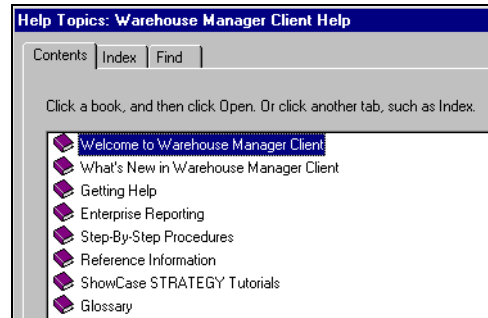


Online

Warehouse Manager Client includes online Help and reference information, including context-sensitive help from dialog boxes. You can access this help in three ways: (1) using the Warehouse Manager Client Help menu (**Help | Help Topics**), (2) clicking the **Help** button, or (3) pressing the **F1** key while you're in a dialog box.

Figure 1-1 shows the table of contents in the Warehouse Manager Client online Help.

Figure 1-1: Warehouse Manager Client Online Help



Welcome

Introduces each ShowCase STRATEGY product and includes tips to get you started.

What's New

Contains a detailed list of enhancements and release notes for the latest release.

Getting Help

Explains how to use the Help system and includes technical support information.

Enterprise Reporting

Provides information for Query/Report Publishers to share data on the Web.

Step-By-Step Procedures

Provides you with cue-card driven help to tasks performed with the software.

Reference Information

Each product contains online reference information with overview information about the menus and dialog boxes.

Tutorials

Use the STRATEGY tutorials to practice using the software. Each contains a number of lessons that lead you through tasks. Examples include working with ShowCase security and viewing active connections.

Online Glossary

Use the ShowCase online glossary to look up definitions. The glossary contains helpful terms specific to ShowCase STRATEGY, Essbase/400, and data warehousing.

What is Warehouse Manager Client?

Warehouse Manager Client allows database administrators to manage the data warehouse. With this application, you can manage warehouse security, profiles, resources, aliases, Analyzer databases, and user access to

ShowCase STRATEGY. Very simply, Warehouse Manager Client is a “mask” for the AS/400 interface, and it provides a more graphic way of interacting with AS/400 objects. It also provides support for third-party software such as JD Edwards and Infinium.

Here is a brief description of the Warehouse Manager Client components.

Alias Manager

Assign meaningful names to AS/400 libraries, tables, and columns to conceal complex AS/400 names. You can also assign foreign language names to the same objects and specify whether a particular column can be used by a profile in a join or as a distinct column in a query statement. Moreover, this feature allows you to import and export ShowCase alias names. See “Aliases” on page 7-28.

Analyzer OLAP

Work with administration of Analyzer-related applications, which use the Analyzer OLAP functionality on the AS/400. You can give AS/400 profiles System Manager privileges, add and remove Essbase/400 databases, remove Analyzer data models, assign user-friendly names to Essbase/400 databases, choose Essbase/400 alias tables, and format members of Essbase/400 databases and Analyzer data models. See “Analyzer OLAP” on page 8-31.

License Manager

Enter and modify STRATEGY application license information. You can maintain ShowCase passwords and monitor who is actively using STRATEGY applications. See “Licensing” on page 10-36.

Profiles

Create and manage AS/400 group and user profiles from your PC. To learn how to create profiles, see “Profiles” on page 4-14.

Resource Manager

Control the impact Query and Report Writer users have on AS/400 resources. You can specify whether users must run queries to the batch subsystem, whether they can build their own queries, and, once they have data in Query, whether they can print it, save it, or use it in other applications. Resource settings are based on AS/400 group, user, and *PUBLIC profiles. See “Resource Settings” on page 6-25.

Security Manager

Secure AS/400 libraries, tables, and columns without impacting applications already using AS/400 security, secure data at the row level, and control access to STRATEGY applications. Security is based on AS/400 group, user, and *PUBLIC profiles. Moreover, this feature allows you to import and export ShowCase security settings. See “Security” on page 5-18.



The Warehouse Manager Client features apply only when users connect to AS/400 data sources through ShowCase ODBC. Security settings cannot be enforced on a Query user who connects to a server through a non-ShowCase ODBC driver.

CHAPTER
2
GETTING STARTED

Three Warehouse Manager Client Methods

There are three general ways to work with Warehouse Manager Client: Warehouse Manager Client Explorer, Wizards, and Fast Paths. The Explorer allows you to access every feature. The Wizards and Fast Paths are alternative methods for some of the features.

ODBC Data Sources

Before you begin working with the methods described in this chapter, you must add data sources to your list of AS/400 data sources in the Warehouse Manager Client Explorer.



Online

In the Warehouse Manager Client online help, see “To add a ShowCase ODBC data source.”



Install

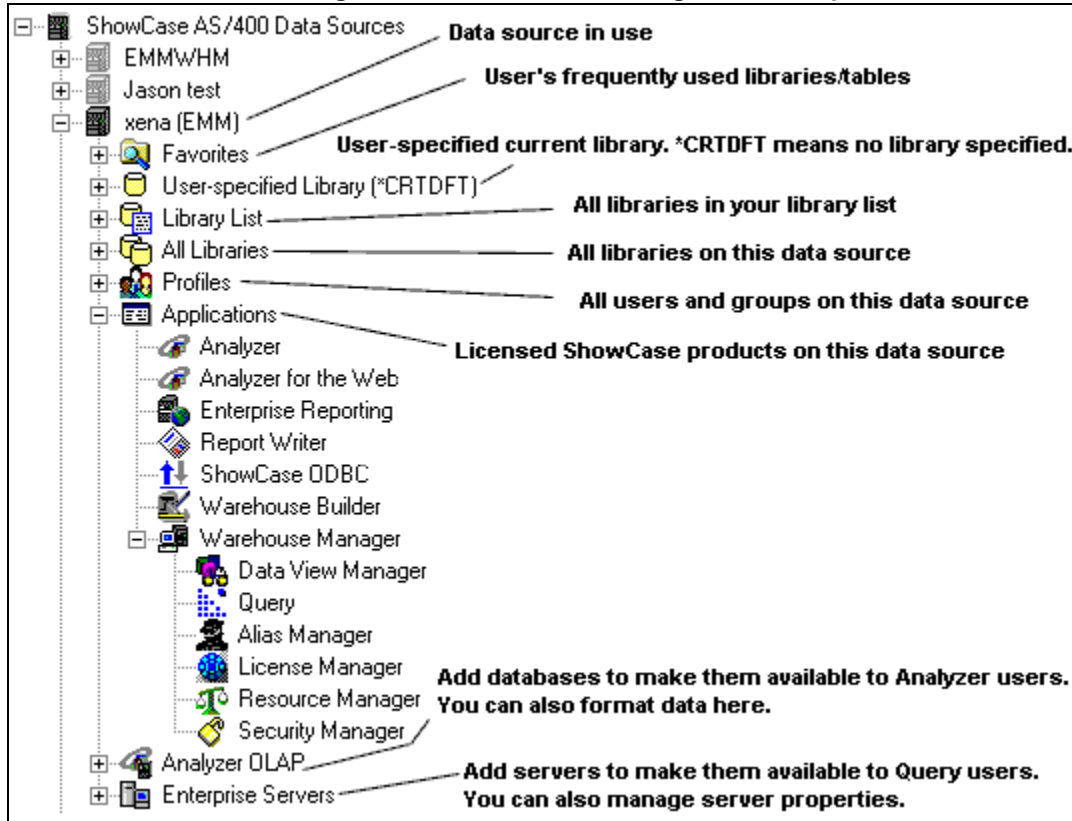
In the ShowCase STRATEGY *Installation Guide*, read Chapter 8, “Setting Up a ShowCase ODBC Data Source.”

Method 1: Warehouse Manager Client Explorer

The Windows Explorer-like interface allows you to navigate through your ShowCase AS/400 data sources, AS/400 objects and profiles, STRATEGY applications, and Analyzer databases (under the Analyzer OLAP item).

Figure 2-1 explains the components of the Warehouse Manager Client Explorer.

Figure 2-1: Warehouse Manager Client Explorer











To Use the Warehouse Manager Client Explorer:

To practice using the Explorer, open Warehouse Manager Client. Double-click an item on the left side to display its contents. To display all layers of data, continue double-clicking an item (See Figure 2-1). For example, double-click a library to show the tables in that library; double-click a table to show the columns in that table. To select multiple items on the right side, use the SHIFT or CTRL key.

You can also work with the Explorer features via the **Manage** menu. If you want explanations on the commands, highlight the command and press **F1**. For example, on the **Manage** menu, highlight **Row Security**, and press **F1** to learn about what happens when you choose the Row Security command and why it may be unavailable to you.

Table 2-1: ShowCase Warehouse Manager Client Icons

	Previous Window		Next Window
	Connect to AS/400		Disconnect from AS/400
	Manage Security		Manage Resource Settings
	Manage Aliases		Change Profile

Additional Explorer tips:




- For specific instructions on using the Warehouse Manager Client features, see the online Help.
- If an object or profile that you created, changed, or deleted from an AS/400 command line is not reflected in the Explorer view, press F5 to refresh the Explorer.
- To change the size of either side of the window, drag the bar that separates the two sides.
- Experiment with right-clicking the items in the Explorer view. The right-click menus give you quick access to common functions.

Method 2: Warehouse Manager Wizards

The Wizards provide easy access to the application's common features. If you are a new Warehouse Manager Client user, you could start with the Wizards because they lead you through tasks. You can use them to work with ShowCase security settings, resource settings, and aliases, and you can define default settings for the Warehouse Manager Server and designate user profiles as Warehouse Manager Data Administrators.

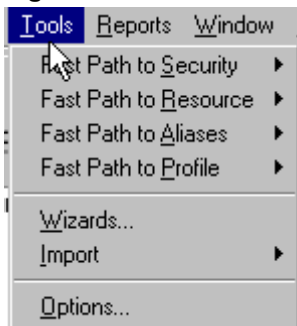
To use Warehouse Manager Wizards: Click Tools | Wizards.

You can also click the  icon.

Method 3: Fast Paths

When you know the specific information you want to work with, use the Fast Paths to quickly access Warehouse Manager Client functions, including ShowCase security settings, resource settings, aliases, and profiles. For example, if you want to secure columns in a specific table in a specific library, use Fast Path to Security. If you want to change a specific profile, use Fast Path to Profile.

Figure 2-2: Fast Paths



To use Fast Paths:
On the Tools menu, click a path.

Using the Methods to Access Features

Use Table 2-2 to compare the methods for accessing Warehouse Manager Client features. You can find each of the Explorer features on the **Manage** menu. The Wizards and Fast Paths are on the **Tools** menu.

Table 2-2: Accessing Warehouse Manager Client Features

	Explorer	Wizard	Fast Path
Security Settings	x	x	x
Resource Settings	x	x	x
Aliases	x	x	x
Server Options	x	x	
Data Administrators	x	x	
Profiles	x		x
Enterprise Servers	x		
Data Source Mapping	x		
AS/400 Data Sources	x		
Auditing	x		
Licensing	x		
Analyzer OLAP	x		

More Information



Online

You can find additional information about the Explorer, Fast Paths, and Wizards in the online help.

What is a Data Administrator?

To understand ShowCase authorities, it is helpful to be familiar with AS/400 security levels. You should first know that AS/400 *ALLOBJ (All Object) authority gives the user access to all objects (libraries, tables, columns) on the AS/400.

Data Administrator authority is a ShowCase-only authority given to a user. The authority is *ALLOBJ-like, but it does not have *ALLOBJ authority. Data Administrators cannot be excluded from libraries, tables, columns, or rows using Warehouse Manager Client, but they are restricted by AS/400 security rules. Data Administrators require AS/400 *ALL authority so they can apply ShowCase security to the objects they administer.

Data Administrators have these privileges:

- Exempt from ShowCase security rules applied to libraries, tables, columns, and rows
- Able to work with server options
- Auditing authority
- Can have ShowCase Manage authority to all libraries, tables, and columns in Warehouse Manager products provided their authority is not overridden by AS/400 security. (Data Administrators do not have implied Manage authority to STRATEGY applications; they must be given authority to these applications like other users. All users with ShowCase Manage authority to a STRATEGY application can grant user profiles Read or Exclude authority to that application.)

If the user who implements ShowCase security does not have *ALLOBJ authority, it is a good idea to make that user a ShowCase Data Administrator.

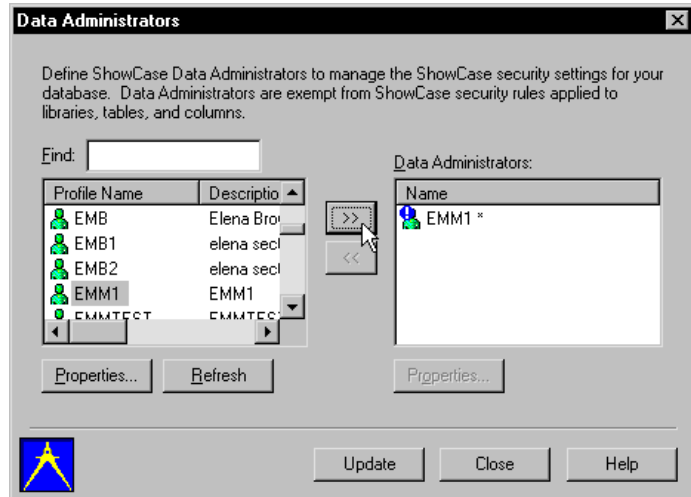
To Grant Data Administrator Privileges

To give user profiles Data Administrator authority, you must have one or more of the following authorities:

- AS/400 QSECOFR authority
- AS/400 *ALLOBJ authority (valid only if ShowCase security is not enforced on *ALLOBJ users)
- ShowCase Data Administrator authority
- AS/400 *SECADM user class
- AS/400 *SECOFR user class

Figure 3-1: Data Administrators Dialog Box

1. In Warehouse Manager Client Explorer, select the data source on which you want to work with Data Administrators.
2. Click **Manage | Data Administrators**. If you are already connected to the data source, the Data Administrator dialog box appears. (See Figure 3-1.)
3. Choose the AS/400 profiles who will be Data Administrators.
4. Click to add these users to the Data Administrators box.
5. Click **Update** to grant these users Data Administrator privileges



More Information

Find additional Data Administrator information in these places:



Admin

ShowCase STRATEGY *Administrator's Guide*, Version 4.0. See the section titled “Designate ShowCase Data Administrators.”



Online

4.0 Warehouse Manager Client online help

CHAPTER 4 PROFILES

Group, User, and *PUBLIC Profiles

Warehouse Manager allows you to work with AS/400 profiles at three levels: user, group, and public. Each serves a specific purpose.

User Level Control

Apply security and resource settings to individual profiles. Each AS/400 user profile can have its own settings. User level is the highest level of control and overrides group or public level settings.

Group Level Control

Apply security and resource settings to groups of similar user profiles. For example, configure the SALES group to have Run-time Query Access Only instead of applying the same setting to each sales profile. Group level settings override public level settings but are overridden by user level settings.

Public Level Control

Apply default security and resource settings to profiles without user or group level settings. Public level control (*PUBLIC) specifies settings common to all user and group profiles on the AS/400. *PUBLIC settings are overridden by user or group level settings. *PUBLIC settings override the Exclude Users from Libraries and Tables by Default security options.



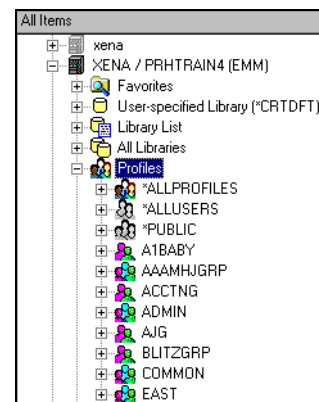
Warehouse Manager products will honor authority if it is gained through an AS/400 supplemental group. However, it is not possible to administer supplemental groups with Warehouse Manager Client. This includes row level security, which works only for AS/400 primary groups, not supplemental groups.

You can only see the profiles to which you have AS/400 Read authority. If you do not have authority to a profile, you will not see that profile in Warehouse Manager Client.

To View AS/400 Profiles

1. In Warehouse Manager Client Explorer, connect to the AS/400 data source on which you want to view profiles.
2. Double-click **Profiles** to list all groups on that AS/400.

Figure 4-1: Managing Profiles



3. To view all groups and users, double-click *ALLPROFILES. To view only users, double-click *ALLUSERS. To view the users in a group, double-click the group.



If you cannot see a profile that you know exists, you do not have authority to that profile. You must have at least AS/400 Read authority to the profile.

To Create a New AS/400 User Profile

To create, change, and delete AS/400 profiles, you must be in *SECADM user class. To create a user profile on an AS/400 command line, use the command CRTUSRPRF.

1. In Warehouse Manager Client Explorer, connect to the AS/400 data source on which you want to create the profile.
2. Click **Manage | Profile | Create User**. The Create User Profile dialog box appears. See figure 4-2.

Figure 4-2: Create User Profile Dialog Box

The screenshot shows a dialog box titled "Create User Profile - XENA / PRHTRAIN4". It has several tabs: General, Privileges, Job, Local Settings, Workstation, and Group. The "General" tab is selected. The fields are as follows:

Profile Name:	DBM
Description:	Don Miller
Group Profile:	*NONE
Owner:	*USRPRF
Group Authority:	*USE
Accounting Code:	*BLANK
Assistance Level:	*SYSVAL
Limit Device Sessions:	*SYSVAL

At the bottom of the dialog, there are three buttons: "Update", "Close", and "Help".

3. Type a name and description for the profile.
4. Define settings on the General, Privileges, Job, Local Settings, or Workstation tabs.
5. On the Group tab, select the groups this user will join. Before you can add the user to supplemental groups, you must specify a primary group. If a primary group isn't specified, any new user automatically becomes a member of *PUBLIC.
6. Click **Update**.



If the user profile you are creating shares similar attributes with an existing user profile, you can more quickly create a new profile by doing one of the following:

- On the **Manage | Profile** menu, use the **Create a Copy** command.
- Use the **Fast Path** method: Click **Tools | Fast Path to Profile | Create User Profile**. After selecting a data source, click **Copy an Existing Profile** and then specify the name of the profile to copy. If you know the exact name, the **Fast Path** method is faster than searching for the name in Explorer.

*If you create a profile on the AS/400 using the CRTUSRPRF command, that profile will not appear in the profiles list in Explorer until you manually refresh the list. Press **F5** to refresh.*

To Create a New AS/400 Group Profile

To create, change, and delete AS/400 profiles, you must be in *SECADM user class. To create a group profile on an AS/400 command line, use the command CRTUSRPRF.

1. In Warehouse Manager Client Explorer, connect to the AS/400 data source.
2. Click **Manage | Profile | Create Group**. The Create Group Profile dialog box appears.
3. Type a name and description for the profile.
4. Define other settings on the General, Privileges, Job, Local Settings, or Workstation tabs.
5. Click the Members tab, and select the users for this group.
6. Click **Update**.



*If you create a profile on the AS/400 using the CRTUSRPRF command, that profile will not appear in the profiles list in Explorer until you manually refresh the list. Press **F5** to refresh.*

To Change an AS/400 Profile

You must be in *SECADM user class to perform this task. To create a group profile on an AS/400 command line, use the command CHGUSRPR.

1. In Explorer, connect to the AS/400 data source.
2. To list all groups on that AS/400, double-click Profiles. To view only users, double-click *ALLUSERS.
3. Select the user or group profile to change.
4. Click **Manage | Profile | Change Profile**. The Change Profile dialog box appears.
5. Make changes.
6. Click **Update**.



*If you know the exact name, the **Fast Path** method is faster than searching for the name in Explorer:*

*Click **Tools | Fast Path to Profile | Change Profile**. After selecting a data source, specify the name of the profile to change.*

To Change an AS/400 User Profile to a Group Profile

You must be in *SECADM user class to perform this task. Once you change a user to a group, you cannot change the group back to a user via this product.

1. In Warehouse Manager Client Explorer, connect to the AS/400 data source.
2. To list all groups on that AS/400, double-click Profiles. To view only users, double-click *ALLUSERS.
3. Select the user profile you want to convert to a group profile.
4. Click **Manage | Profile | Change to Group**.
If the user currently belongs to a group(s), you are asked if you really want to change the user to a group. In this case, changing the user to a group will remove the user from its current group(s). If you choose Yes on the message prompt, the Change User to a Group dialog box appears. The user profile settings are retained.
5. Make changes on the General, Privileges, Job, Local Settings, or Workstation tabs.
6. Click the Members tab, then select the users you want to be members of this group.
7. Click **Update**.



After you create the group profile, you can sign on to the AS/400 with the group profile because it inherits the password from the former user profile.

To Move AS/400 User Profiles Between Groups

You must be in *SECADM user class to perform this task.

1. In Warehouse Manager Client Explorer, connect to the AS/400 data source.
2. To list all groups on that AS/400, double-click Profiles. To view only users, double-click *ALLUSERS.
3. Select any of the following combinations of profiles for the move: a single user, users from the same group, users from two different groups, a group, or two groups. Use the SHIFT or CTRL key to select multiples in the right side of Explorer.
4. Click **Manage | Profile | Move**. In the Move Users dialog box, move users to the new group.
5. Click **Update**.

More information



In your Warehouse Manager Client online help, learn how to copy a profile, delete a profile, and more.

CHAPTER 5 SECURITY

When you set security for ShowCase Warehouse Manager Server, it will affect all ShowCase client applications that connect to Warehouse Manager Server. These include:

- Warehouse Manager Client
- Warehouse Builder
- Query
- Report Writer
- Enterprise Reporting
- Analyzer
- Analyzer for the Web

Steps to Applying Security

When you apply ShowCase security, you will generally follow these steps:

- Designate at least one user profile as a ShowCase Data Administrator. See Chapter 3.
- Review your user profile scheme and update if desired. See Chapter 4.
- Decide on your general security policy. Choose whether to restrict global access to files and then authorize specific users to specific files, or to allow global access to files and then exclude specific users from specific files. Implementing this decision takes two steps:
 - Set the server options to allow all users to see all libraries and tables, or to exclude all users from all libraries and tables. See “Server Options” on page 5-19.
 - Apply authorities to specific libraries and tables for specific users. See “Library, Table, and Column Security” on page 5-20.
- Decide whether to restrict users to libraries within their AS/400 library lists. See “Server Options” on page 5-19.
- Apply column filters. See “Library, Table, and Column Security” on page 5-20.
- Apply row filters. See “Row Security (Warehouse Manager Products Only)” on page 5-21.
- Ensure that the correct users are authorized to or restricted from specific ShowCase applications. See “Application Security” on page 5-22.
- If desired, use Warehouse Manager products to direct output to libraries that users are authorized to use. For information, see “Resource Settings” on page 6-25. Look for the batch tab.

ShowCase and AS/400 Security

You can't give users **more** ShowCase authority to an object than what their AS/400 security level allows—but you can give users **less** ShowCase authority than their AS/400 authority. For example, if users have AS/400 Read

access to an object, you can't give them ShowCase Manage authority to it. However, you can exclude users from an object even if their AS/400 authority allows them access to that object.



Warehouse Manager Client applies security to primary groups only. ShowCase security applied to a supplemental group via Warehouse Manager Client is not supported. Row level security works only for AS/400 primary groups, not supplemental groups.

ShowCase and Third Party Security

JD Edwards

ShowCase will honor JD Edwards Business Unit Security (Row security) and Field Level Security. Any JDE user, user group, or file with Business Unit Security defined in the JDE environment will be supported. It will be applied to the Query as a WHERE condition. Also, if you have set up Field Level Security in World Writer, you will not see the fields you have been secured from in a new Query. JD Edwards security support is integrated into ShowCase code, and ShowCase supports the code.

Infinium

To provide Infinium SAM (Security Access Module) support, ShowCase code calls Infinium security code modules. The SAM module provides basic row level security against Infinium users of Infinium data files. Row security is applied to a select statement that is passed to the Infinium modules by the ShowCase server. The SAM module is supported by Infinium.

Server Options

Use Server Options to set default options for a Warehouse Manager server. You will typically only set these options once because they act as global options. To define server options, you must select a data source and have the required authority.

How does ShowCase security affect profiles with *ALLOBJ authority?

By default, *ALLOBJ profiles cannot be secured by ShowCase security. But in STRATEGY, the *ALLOBJ Server Option allows you to enforce ShowCase security for libraries, tables, and columns on *ALLOBJ profiles.

To Manage Server Options for a Server Library (Explorer)



First-Time User?

*If you are managing server options for the first time, try using the Wizard instead of the Explorer method. The Wizard will lead you through the steps for applying server options. Click the **Help** button if you get lost.*

1. In Warehouse Manager Client Explorer, select the data source that represents the desired server library.
2. Click **Manage | Server Options**. You will see a dialog box like the one in Figure 5-1.

Figure 5-1: Server Options Dialog Box

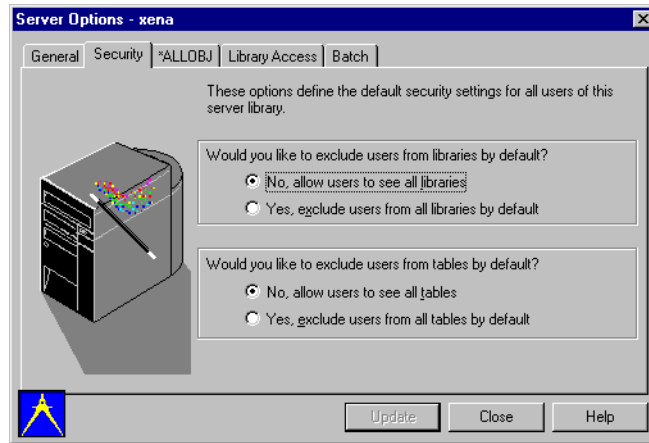


Table 5-1: Server Options Dialog Box Tabs

Tab	Function (Applies to Warehouse Manager Server libraries)
Security	Set default security on AS/400 libraries and tables for all users of the specified server library.
*ALLOBJ	Choose how ShowCase security rules for libraries, tables, and columns affect *ALLOBJ users.
Library Access	Specify libraries to be returned when requesting all libraries from the PC.
Batch	Query and Report Writer allow users to create result tables from a batch query. You can control who can clear these tables.
JD Edwards	Set JDE cache options (only if you have a JDE enabled password)

Library, Table, and Column Security

Use library, table, and column security to assign Read, Manage, or Exclude authority to users or groups in a specific library, table, or column. To manage ShowCase security for AS/400 objects and STRATEGY applications, you should have the following authorities:

- ShowCase Manage authority to Warehouse Manager Client.
- Because you're using both ShowCase and AS/400 security, you must also have AS/400 manage authority to the objects you will work with.



ShowCase column security controls only Warehouse Manager products.

ShowCase column security allows users to see specific columns of a database. For example, an employee master file might contain employee names, titles, department numbers, hire dates, and social security numbers. Although specific users may need access to the information, you may want to keep the social security numbers confidential. Using ShowCase column security, you can exclude all users or specific users from seeing the social security column, while allowing access to all other columns.

When applying column security, ensure that users have authority to see the database file. If you want to restrict everyone from seeing the column, choose the user profile *PUBLIC. If you want to restrict specific users, choose those user profiles and specify Exclude authority.

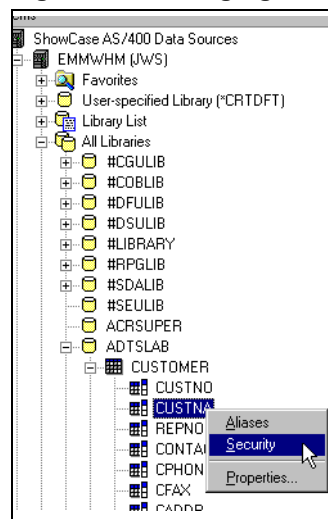
To Apply Library, Table, or Column Security (Explorer)



First-Time User?

*If you are applying security settings for the first time, try using the Wizard instead of the Explorer method. The Wizard will lead you through the steps for applying security settings. Click the **Help** button if you get lost.*


Figure 5-2: Managing Security



1. Connect to your data source, and in the All Libraries list, choose a library (or libraries), table(s), or column(s) to manage. Use the SHIFT or CTRL key to select multiples in the right side of Explorer.


2. Click **Manage | Security**—or click .

In the Security window, you will see your objects (libraries, tables, or columns) in the Selected Items section.

3. Click **Security | Add**—or click .

Choose the profile(s) or group(s) you want to apply authority to. To apply security to all groups and users, select *PUBLIC.

4. Give the profile(s) Read, Manage, or Exclude authority.

5. To save the security setting and update the server, click .

More Information



See these Warehouse Manager Client online help topics:

- To manage library security (Explorer) or (Fast Path)
- To manage table security (Explorer) or (Fast Path)
- To manage column security (Explorer) or (Fast Path)



In Fast Path security, you can specify columns from different tables in different libraries, which you can't do in Explorer. If you don't know the name of the library or table that owns the column:

- For library, click **Library**, then click **Show Libraries**.
- For table, click **Table**, then click **Show Tables**.

Row Security (Warehouse Manager Products Only)

ShowCase row security allows users to see some rows of a database file while restricting them from seeing other rows. For example, a prospective customer file might contain information for your company's potential clients around the world. However, you only want the sales managers in each country to be able to view information

about prospects in their own country. Using ShowCase row security, you can exclude users from seeing the rows that contain information about prospects in other countries.

When applying row security, using the example above, first ensure that each sales manager has access to the prospect file. For the U.S. sales manager, choose that person’s user profile, and for the row condition enter \COUNTRY\='USA', where COUNTRY is the name of the column containing country information. Then, choose the German sales manager and enter \COUNTRY\='DEU', and repeat this for the sales manager in each country.

To Apply Row Security (Explorer)

1. Connect to your data source, and in the All Libraries list, choose a table(s) to manage. Use the SHIFT or CTRL key to select multiples in the right side of Explorer.

2. Click **Manage | Row Security**.

3. Click **Row | Add**—or click .

Choose the profile(s) or group(s) you want to apply authority to. To apply security to all groups and users, select *PUBLIC.

4. Choose to add a new row authority.

5. To filter the information for the profile(s) you chose, type a condition for the row. A row condition consists of a column in a table, a SQL operator, and data to be filtered. For example, if the row condition is

\STATE\='WI' AND \CITY\='MADISON',

and a user to which the condition is applied runs a query against the selected table, all rows where the state is Wisconsin and the city is Madison will be returned.

6. Click **Validate** to validate the row condition for proper SQL syntax.


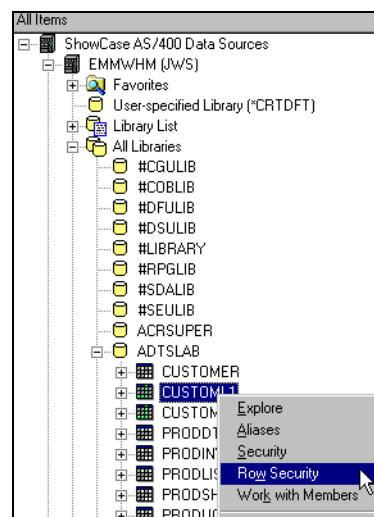
7. To save the security setting and update the server, click .

Figure 5-3: Applying Row Security



More Information



See this Warehouse Manager Client online help topic:

To manage row security (Explorer) or (Fast Path)



*In Fast Path row security, you can specify tables from different libraries, which you can't do in Explorer. If you don't know the name of the library that owns the table, click **Library**, then click **Show Libraries**.*

Application Security

Application security allows you to grant or deny access to ShowCase applications. Some ShowCase applications allow users to do more than access files. For example, Warehouse Builder can create new files, and Warehouse

Manager Client can apply security, alias, and resource settings. In most cases, you should exclude all users from using these applications except administrators.

Another example: John and Mary manage different portions of your data warehouse: John handles aliases, and Mary handles security. If you expand Warehouse Manager in the Explorer tree, you can see the various Warehouse Manager components.

You can give both John and Mary Read access to Warehouse Manager. Then you can give John Manage authority to Alias Manager and Mary Manage authority to Security Manager. This way, both John and Mary can see the entire application, but they can only work with specific aspects.

Authority to use Query and Report Writer can generally be given to all users. However, it is possible to create batch output files with these products.

To manage ShowCase security for AS/400 objects and STRATEGY applications, you should have ShowCase Manage authority to Warehouse Manager Client.



First-Time User?

*If you are applying application settings for the first time, try using the Wizard instead of the Explorer method. The Wizard will lead you through the steps for applying application settings. Click the **Help** button if you get lost.*

To Apply Application Security (Explorer):

1. Connect to your data source, and in the Applications list, choose an application (or applications) to manage. Use the SHIFT or CTRL key to select multiples in the right side of Explorer.

2. Click **Manage | Security**—or click  .

3. In the Security window, you will see your application(s) in the Selected Items section.

4. Click **Security | Add**—or click  .

Choose the profile(s) or group(s) you want to apply authority to. To apply security to all groups and users, select *PUBLIC.

5. Give the profile(s) Read, Manage, or Exclude authority to the application(s).


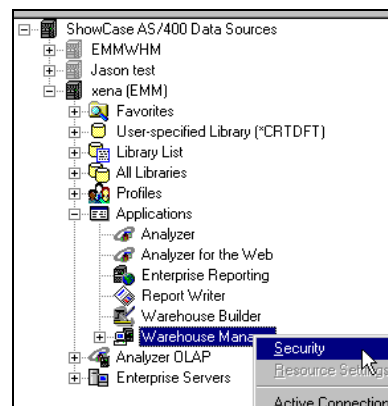
6. To save the security setting and update the server, click  .

Figure 5-4: Applying Application Security



More Information



See this Warehouse Manager Client online help topic:

To manage application security (Explorer) or (Fast Path)

More Information



Admin

For details about security considerations when deploying ShowCase STRATEGY, see the ShowCase STRATEGY *Administrator's Guide*, Chapter 3, section titled "Planning Security."

For details about setting up Essbase/400 integrated security, see the ShowCase STRATEGY *Administrator's Guide*, Chapter 7, section titled "Integrated Security."

Resource Settings

Resource settings allow you to apply AS/400 limits and restrictions to selected profiles. These settings affect how users can use and run queries when the profiles connect to the selected data source from Query or Report Writer.

You can add resource settings at the user, group, or PUBLIC level.

To manage Query and Report Writer system usage, you should have ShowCase Manage authority to Warehouse Manager Client.



Since Query and Report Writer share the same resource settings, you only need ShowCase Manage authority to either product; thus, you have implied authority to change resource settings for both products.

Figure 6-1: Resource Settings Dialog Box

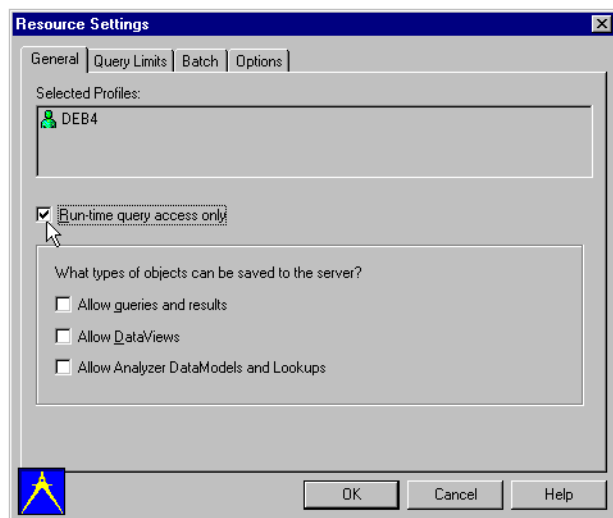


Table 6-1: Resource Settings Dialog Box Tabs

Tab	Function
General tab	Choose if users can create, modify, and run queries—or just run queries. You can also specify what types of results can be saved to server to be shared among users as shared queries.
Query Limits tab	When users submit queries from Query or Report Writer, you can force them to run Interactive, Batch, or Both. Then, limit the time allowed to run queries and choose the job priority of queries.
Batch tab	Apply AS/400 batch settings to the selected profiles. You can allow or not allow users to store results in a table. Also, choose a job description that the profile is to use when running batch queries.

Table 6-1: Resource Settings Dialog Box Tabs

Options tab	<p>You can allow or not allow users to:</p> <ul style="list-style-type: none"> • Save queries to a PC • Print query results • Choose another viewer or link to other applications (such as Excel) • See the database name in Query
-------------	--

Resource vs. Security Settings

Are Warehouse Manager Client resource settings and security independent of each other?

Resource settings on a component will override security settings. For example, if a profile has Run-time Only access in Query resource settings and Manage authority for Query, the user can run queries for only the selected data source.



Why should I validate my settings?


Some resource settings have a numeric values with a specific range like 0–100. Entering 2000 for a value would be invalid. This menu option is in the Resource Settings window. Click **Resource | Validate Settings**.

To Apply Resource Settings (Explorer)



You can only change resource settings for Query/Report Writer users. Since Query and Report Writer share the same resource settings, changing the settings for one product changes the settings for both products.

1. Connect to your data source, and in the Applications list, select Query or Report Writer. To select Query, expand Warehouse Manager.
2. Click **Manage | Resource Settings**—or click .
3. In the Security window, on the **Security** menu, click **Add**—or click .

Choose the profile(s) or group(s) you want to apply authority to. To apply security to all groups and users, select *PUBLIC.
4. Click **Next**.
5. To copy an existing profile's resource settings onto your selected profile(s), choose **Copy from Profile**. If there are currently no profiles with resource settings defined, click **Use Defaults**. The defaults are pre-set in Warehouse Manager Client.
6. To save the security setting and update the server, click .



First-Time User?

*If you are applying resource settings for the first time, try using the Wizard instead of the Explorer method. The Wizard will lead you through the steps for applying resource settings. Click the **Help** button if you get lost.*

More Information



Online


See these Warehouse Manager Client online help topics:

- To manage resource settings (Explorer)
- To manage resource settings (Fast Path)

Using Default Profiles to Apply Resources to Profiles

Resource settings for users are often similar in groups such as sales, marketing, or management. Default profiles allow you to quickly copy resource settings to a new employee's profile. For example, if you want to create a resource settings profile for managers, you must first create the manager profile. For instructions on creating a profile, see "Profiles" on page 4-14.

Example 1: Creating a Default Resource Settings Profile for Managers

1. Set resource settings for your manager profile. To do this, in the Resource Settings window, select your sales manager default profile, select **Use Defaults** and click **Finish**.
2. Edit the resource settings for your default sales manager. In the Resource Settings window, select the sales manager profile and click the Edit button .
3. Authorize managers to save Queries, Views, and Analyzer Models to the server. Click the **Query Limits** tab. Click **Both** to allow managers to run in both interactive and batch mode. Set query limits to 1 minute for interactive and *NOMAX for batch queries. This prevents managers from running large or poorly written queries interactively and ensures that none of the managers' batch queries is stopped by the governor.

You have now finished setting up your default manager profile. This will simplify setting up resource settings for new managers. Simply copy the settings from the default profile to the new profile.

Example 2: Creating a Default Resource Settings Profile for US Sales Reps

Company policy states that US Sales Reps can only run queries in batch mode and only if the query will take less than 10 minutes to run. Unlike managers, sales reps should not have the ability to save objects to the server. To work with the US Sales Rep profile, you must create a default profile. To do this, see "Profiles" on page 4-14.

1. Follow Steps 1 and 2 above, and replace sales manager with US Sales Rep.
2. On the **General** tab, check the Run-time Query Access Only. This will prohibit the reps from modifying queries and let them simply run queries. Then uncheck the other three boxes to prohibit these users from saving objects to the server.

Examples in Use: Copying Resource Settings to New Employee Profiles

Your company has two new employees, US Sales Representative Don Miller and US Sales Manager Mary Olson. You can use the default profiles you just created to copy resource settings to the new employees.

1. In the Resource Settings window, click the Add button  and choose the new sales manager, Mary Olson, and click **Next**.
You now can choose to **Use Defaults** or **Copy from Profile**.
2. To copy the resource settings from the default to Mary Olson, choose **Copy from Profile** and select your sales manager default profile. Click **Finish**.
3. Repeat the steps for Don Miller, using the default US Sales Rep profile.

Mary and Don's resource settings are now set up with the same settings as the default profiles that you set up earlier.

CHAPTER 7 ALIASES

What Are Aliases?

The Alias Manager allows you to assign meaningful names to AS/400 libraries, tables, and columns, thereby concealing the complexities of AS/400 naming conventions. You can also assign foreign language names to the same objects, and specify whether a particular column can be used in a join or as a distinct column in a query statement.

This feature will not create new AS/400 objects and will not change the physical layout of your database. Moreover, alias names only appear in ShowCase client products that access the Warehouse Manager Server. Therefore, ShowCase aliases do not affect third-party or AS/400 applications (such as RPG programs).



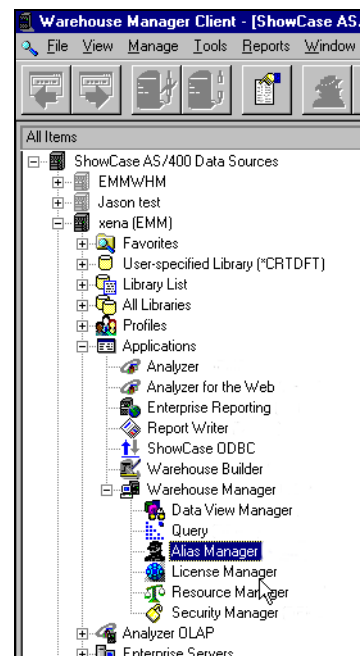
Be careful not to assign a name that is already used by an existing system object; otherwise, you and your users will be prevented from accessing that object. In Query, alias names take precedence over system names.

After you apply aliases, you and your users will see the alias names for these libraries, tables, or columns instead of their system names in Warehouse Manager Client, Warehouse Builder, Query, and Report Writer.


To manage ShowCase aliases for AS/400 libraries, tables, or columns on a data source, you must select a library, table, or column and have the following authorities.

- ShowCase Manage authority to Warehouse Manager Client.
- Because you're using both ShowCase and AS/400 security, you must also have AS/400 manage authority to the objects you will work with.

Figure 7-1: Alias Manager



To Manage Library, Table, and Column Aliases (Explorer)

1. Connect to your data source, and in the All Libraries list, choose an object (library/libraries, tables, or columns) to manage. Use the SHIFT or CTRL key to select multiples in the right side of Explorer. Only one alias can be applied per object.
2. Click **Manage | Aliases**—or click  .



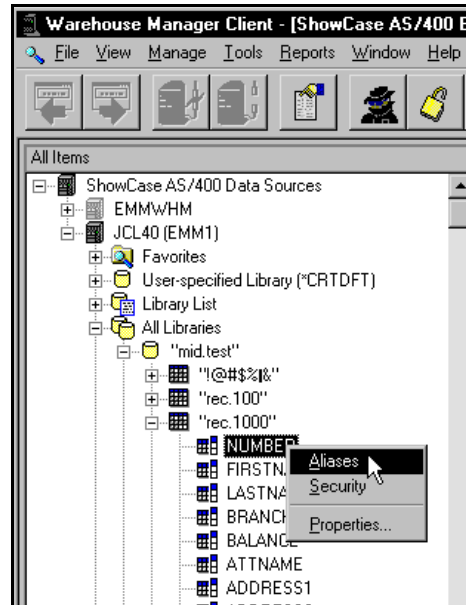
In the Aliases window, you will see your objects (libraries, tables, or columns) in the Selected Items section. If you haven't assigned an alias name to your object, the system will write the default alias as the System Name.
3. Select the object, and click **Aliases | Edit**—or click  .
4. In the **Edit Alias** dialog box, change any of the following details: Alias name, Description, Heading (columns only), Allow in Join (columns only), Allow as Distinct (columns only).
5. If you selected multiple objects and want to change other aliases, click **Next** or **Previous**.
6. To save the alias and update the server, click  .

Figure 7-2: Managing Aliases



First-Time User?

*If you are managing aliases for the first time, try using the Wizard instead of the Explorer method. The Wizard will lead you through the steps for applying aliases. Click the **Help** button if you get lost.*



In Fast Path aliases, you can specify columns from different tables in different libraries, which you can't do in Explorer. If you don't know the name of the library and table in which the column belongs:

- For library, click **Library**, then click **Show Libraries**.
- For table, click **Table**, then click **Show Tables**.

More Information



See these Warehouse Manager Client online help topics:

- To manage library aliases (Explorer) or (Fast Path)
- To manage table aliases (Explorer) or (Fast Path)
- To manage column aliases (Explorer) or (Fast Path)
- To remove an alias for a specific language
- To import aliases
- To export aliases
- Warehouse Manager Client tutorials, Lesson 6

Alias Questions and Tips

What is a visible language alias?

This is the alias for the language in the Language ID column. The visible language alias could be your AS/400 running language or *SYSVAL, the default AS/400 system language (QLANGID).

You must have a visible language alias. Alias names are based on the AS/400 language identifier assigned to the profile using a Warehouse Manager product. If there is no alias defined with that language ID, the visible language alias is used. If there is no visible language alias, the default AS/400 name (long name or system name) is used.

Can I give multiple aliases to the same AS/400 object?

Yes, as long as each alias has a unique language ID. If there are multiple aliases for an object, only the visible language alias is apparent.

Alias names appear in place of system names in Warehouse Manager products. However, the underlying system names are used when requesting data.

Can I change the alias name whenever I want?

Yes, the alias names are used for display purposes in Warehouse Manager products only. The underlying system names are still used when requesting data.

If I put a ShowCase alias name on an object, will it affect my AS/400 programs?

No, ShowCase aliases do not affect AS/400 or vendor programs. Only Warehouse Manager products use ShowCase aliases.

CHAPTER 8 ANALYZER OLAP

Analyzer OLAP Functionality

Analyzer-related applications use the Analyzer OLAP functionality of Warehouse Manager Server on the AS/400. In Warehouse Manager Client, you can add and remove Essbase/400 databases to make them available to Analyzer users, give AS/400 profiles System Manager privileges, remove Analyzer data models, assign user-friendly names to Essbase/400 databases, choose Essbase/400 alias tables, and format members of Essbase/400 databases and Analyzer data models.

All this can be done using the Warehouse Manager Client Explorer. Click **Manage | Analyzer OLAP**. If you want an explanation of a command before you choose it, highlight it and press **F1**.

To Add Essbase/400 Databases for Analyzer Users

You must have *ALLOBJ authority to perform this task, which only applies to Essbase/400 databases.

1. In Warehouse Manager Client Explorer, connect to the data source.
2. Double-click Analyzer OLAP and select the Databases item.
3. Click **Manage | Analyzer OLAP | Add Database**.
4. In the Essbase System Logon dialog box, specify an Essbase/400 server to connect to and enter your Essbase/400 user name and password.

If you enter the alias name of an AS/400 IP address instead of the IP numbers, you must create the same alias name on the AS/400 and on each PC that accesses that name.

5. Click **OK** to display the Add Database dialog box.
6. Choose the databases to which you want Analyzer users to have access, and click **OK**.

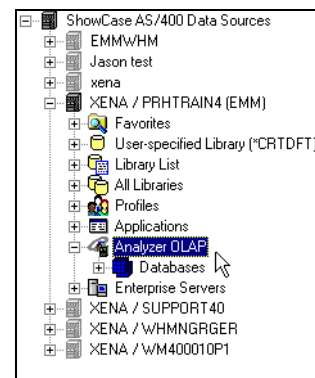
The databases are added to the Warehouse Manager Server on the selected AS/400 data source, and to the list under the Databases item.

System Manager

When AS/400 or Essbase user IDs are set up in Warehouse Manager, they can be defined with regular User permissions or System Manager permissions. System Manager is a role and a privileged authority that unlocks special features reserved for advanced users or IS professionals. System Manager authority doesn't affect AS/400, ShowCase, or third-party (such as JD Edwards) security rules.

The following sections explain what a user with System Manager authority can do in each component.

Figure 8-1: Analyzer OLAP



System Manager and Analyzer

- **Administer view groups:** Users with System Manager privileges can give view group ownership to a user (e.g., "Joe User") or to the System Manager ID, {system}. While all users can share view groups, generally only the user that created them can change or delete them. However, users with System Manager privileges can administer view groups owned by {system}. This capability is especially useful with your most critical shared views and groups, in sharing administration among a group of users.
- **Share lists:** To allow users flexibility in creating their lists (ad-hoc member groups), lists are owned by specific user IDs and are not shared unless they are owned by {system}. Lists created by a user with System Manager privileges are automatically shared.
- **Share SlideShows:** SlideShows are also owned by specific user IDs. SlideShows created by a System Manager are shared. SlideShows are stored on your PC, not on the AS/400.

System Manager and Analyzer Designer

- **Create custom displays:** These include pinboards (custom graphical displays) and forms (composite displays containing multiple linked views and OLAP-aware controls).



Analyzer Designer is restricted to users with System Manager authority. All custom forms and pinboards are owned by the System Manager user ID {system}, and may be administered only by System Managers. However, any user can use an Analyzer form and even copy it into their own groups. Similarly, anyone can use a pinboard—but only System Managers can create and modify their structure. Analyzer Designer is covered fully in the Analyzer Designer online help.

To Grant System Manager Privileges

To work with administration of Analyzer-related applications, you must have *ALLOBJ authority.

1. Connect to the data source.
2. Double-click Analyzer OLAP and select the Databases item.
3. Click **Manage | Analyzer OLAP | User Settings**. The User Settings dialog box appears.
 - If integrated security is ON, AS/400 profiles appear.
 - If integrated security is OFF, you must log on to the Essbase System to display Essbase profiles.
4. Choose the AS/400 or Essbase/400 profiles that you will grant System Manager authority to.
5. Click to add these users to the System Managers box. To select multiple profiles, use the SHIFT or CTRL key.
6. Click **OK** to grant these users System Manager privileges.



Individual profiles in a group profile do not inherit the group's authorities. If you assign System Manager authority to a group profile, you must log on as the group to use that authority.

More Information



Admin

For details about setting up Essbase/400 integrated security, see the ShowCase STRATEGY Administrator's Guide, Chapter 7, section titled "Integrated Security."



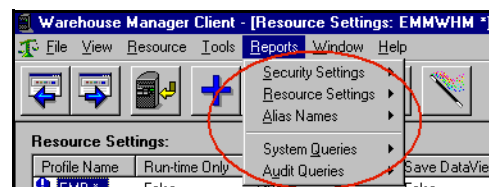
Online

For additional information on using Analyzer OLAP, see the Warehouse Manager Client online help.

Warehouse Manager Queries and Reports

Warehouse Manager Client includes pre-built queries and reports that query AS/400 catalogs and files. The resulting data are displayed in Query or Report Writer. The data may include ShowCase security settings, resource settings, aliases, or AS/400 system information defined on the selected ShowCase AS/400 data source.

Figure 9-1: Pre-built Queries & Reports



To run the **queries** or system queries, you must have installed Report Writer (which includes Query) or Query and the Administration Queries. To run the **reports**, you must have installed Report Writer and the Administration Reports.

There are several queries and reports. For information about one, click **Reports**, highlight the query or report you're interested in, and press **F1** for an explanation of the query or report and when to use it.

Important Setup Information for System Queries

To avoid run-time errors, use the following commands on an AS/400 command line to generate the files referenced by the system queries. Before using the queries in the future, you must re-run both commands to display the most recent system statistics.

1. DSPOBJD OBJ (*ALL/*ALL) OBJTYPE (*ALL) DETAIL (*FULL) OUTPUT (*OUTFILE) OUTFILE (QGPL/DSPOBJD)
2. DSPUSRPRF USRPRF (*ALL) TYPE (*BASIC) OUTPUT (*OUTFILE) OUTFILE (QGPL/USRPRF)

These commands require that you have AS/400 operational authority to the objects, at least AS/400 Execute authority to the libraries, and AS/400 Read authority to the profiles. If needed, change the authority to the outfiles to protect their information. Alternately, the files could be put in a secured library and the queries altered to point to the new library.



To optimize performance, run these commands in batch mode or during non-business hours. Depending on how many objects are on the system, the DSPOBJD command may take up to two hours to complete

Auditing

Auditing provides information to make decisions about how your company uses AS/400 resources, and it is the first step to identifying problems and reallocating resources. An audit records information every time a ShowCase application runs a SQL statement on the server library being audited. You can specify the duration and file size of the audit, and when the audit finishes you can run pre-built audit queries and reports to see results and spot trends.

For example, an audit may identify individuals who use too many resources (large queries) during work hours. To improve AS/400 performance you could suggest they batch their jobs to run overnight.

Three steps to auditing: Set up and run the audit. Analyze the audit information. Make resource changes.

Step 1: Set Up and Run the Audit

You must have *ALLOBJ or *SECOFR authority to audit.

1. Select a data source.
2. Click **Manage | Auditing**.
3. On the Auditing dialog box under Time Limit, specify how long you want the audit to run. For example, to stop the audit after 2 hours, select Hours and type 2.
4. Under File Size Limit, specify the maximum file size (kilobytes).
5. To start the audit, click the **Start Audit** button. Once auditing starts, the Start Auditing button changes to Stop Auditing.
6. The audit stops when it reaches the time limit, file size limit, or the Stop Auditing button is clicked.

Step 2: Analyze the Audit Information

1. To run an audit query, click **Reports | Audit Queries**.
2. From the list, select the audit query or report to run. If you don't know which query or report to run, highlight one and press **F1** for an explanation of the query or report and when to use it.



You can run audit queries during and after an audit. The results include the audit information as it exists when you run the query.

Figure 9-2: Auditing a Data Source

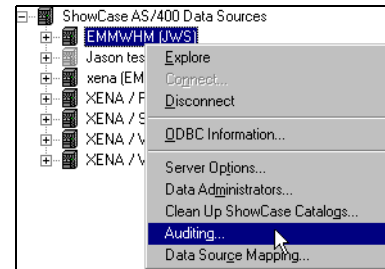
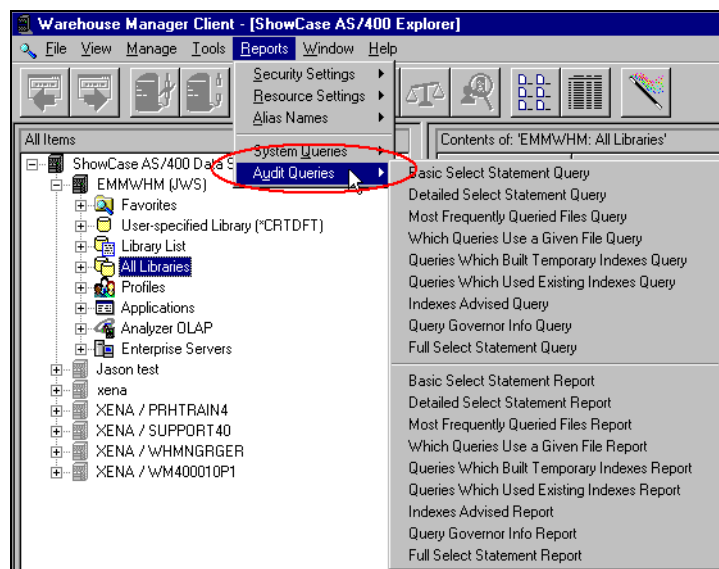


Figure 9-3: Audit Queries



Step 3: Make Resource Changes

Figure 9-4 is an example of the Detailed Select Statement query. It returns the date and time of each query, the user, the application used, and the run time. For example, you notice that user SLD is using Warehouse Manager Client, but she shouldn't have access to this application. You can correct this by adjusting your application security settings and excluding SLD from Warehouse Manager Client.

Figure 9-4: Detailed Select Statement Query

	Query Date/Time	User	Job Number	Unique Statement Number	ShowCase Application	CPU Time Used (milliseconds)	Rows Returned	
1	07/19/1999 13:22:53.783	FHB	392191	1	Query	53	21	SELE
2	07/19/1999 13:32:25.321	KVMDJ	392215	1	Warehouse Builder	90	37	SELE
3								
4	07/19/1999 13:34:44.056	MMCROBERTS	392217	1	Query	120	79	SELE
5	07/19/1999 13:39:21.685	MMCROBERTS	392233	1	Query	135	28	SELE
6								
7	07/19/1999 14:11:22.113	SLD	392355	1	Warehouse Manager	86	0	SELE
8	07/19/1999 14:16:42.378	SLD	392355	6	Warehouse Manager	114	0	SELE
9	07/19/1999 14:46:30.055	FHB	392541	1	Query	55	62	SELE
10	07/19/1999 14:46:45.954	FHB	392541	2	Query	29	21	SELE
11	07/19/1999 14:47:10.488	FHB	392541	3	Query	27	79	SELE
12	07/19/1999 15:08:28.932	MMCROBERTS	392761	2	Query	12	1	SELE
13	07/19/1999 15:08:50.263	MMCROBERTS	392761	3	Query	17	0	SELE
14	07/19/1999 15:09:24.906	MMCROBERTS	392761	4	Query	11	1	SELE
15	07/19/1999 15:19:41.574	QTEST	392793	1	Warehouse Builder	158	37	SELE
16								

More Information



See the ShowCase STRATEGY *Administrator's Guide*, Chapter 3.

Admin



See Warehouse Manager Client online help and Warehouse Manager Client tutorial, lessons 11 and 13.

Online

CHAPTER 10 LICENSING

Your organization will have either concurrent or per-seat licensing.

Concurrent Licensing

Warehouse Manager Server requires one password from each ShowCase PC product before enabling connections from the software. Concurrent license passwords allow a defined number of simultaneous connections to the AS/400, but an unlimited number of PC installations. Warehouse Manager Server monitors the number of users who are connected simultaneously, and when the maximum number of connections allowed by your license is reached, the server prohibits additional connections until one or more users disconnect. Connection is granted on a first-come, first-served basis.

Per-Seat Licensing

Per-seat passwords allow a defined number of PCs a license to connect to the AS/400 for each product (e.g., x licenses for Warehouse Builder, x licenses for Report Writer). The number of connections allowed to this sever is determined by your password.

The PCs are granted licenses on a first-come, first-served basis. The first PCs installed with the ShowCase software will retain a license until the license is removed in Warehouse Manager Client. Every time you install on a PC, you use a new license (even if it is the same PC). If you plan to reinstall ShowCase software, you must first remove this license from Warehouse Manager Client and then reinstall. If you accidentally remove an existing license from Warehouse Manager Client, you must reinstall on the PC whose license was removed to reissue the license.

To View Per-Seat Licenses in Use

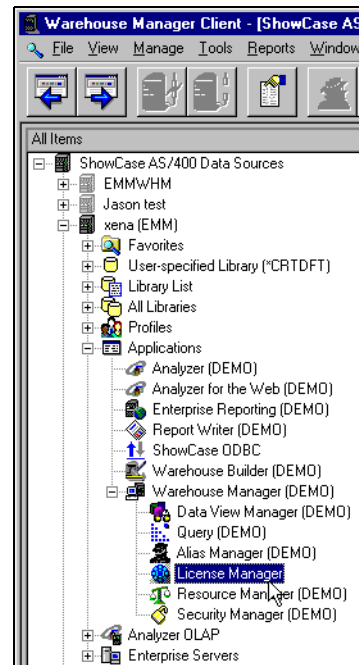
To manage per-seat licenses, you need ShowCase Manage authority to Warehouse Manager Client. You must also enter a per-seat password (SCS or JDS prefix) for each applicable product. The Per-seat Licenses command is always disabled during the product trial period (DEMO) after initial installation. Once you enter a per-seat password, the trial period no longer applies.

1. In Warehouse Manager Client Explorer, connect to the data source.
2. Double-click Applications.
3. Select a product that has a per-seat password (SCS or JDS prefix).
4. Click **Manage | Per-seat Licenses** to display all PCs licensed to the selected application.

To Remove a Per-Seat License

1. Choose the PCs you no longer want licensed to the selected application.
2. Click **Licenses | Remove PC**.
You are asked to confirm that you want to delete the selected PC names and thereby their licenses. Once you remove a license, the only way to establish a new license using that PC name is by reinstalling the application software.

Figure 10-1: License Manager



To view PCs you removed licenses from, click **View | Removed PC Licenses**. To view a user's complete name, click **Licenses | Last User Properties**. To update the list, click **View | Refresh**.

To Add or Change a Password for an Application

1. In Explorer, connect to the data source.
2. To add a password, select Applications. To change a password, select the application you will change.
3. Click **Manage | Passwords | Add Password** or **Change Password**.
4. Type the values for the password (password, number of users, expiration date). The password indicates the product you want to license.
5. Click **Update**.



You can also work with password information with the **CHGSCAUT** command on an AS/400 command line. To run this command, first add the Warehouse Manager Server library (for example, **SCSERVER**) to your library list.

To View Who is Currently Using an Application

1. Connect to the data source on which you want to view active connections.
2. Double-click Applications to list the available applications.
3. Select a single product or the entire Applications item.

- Click **Manage | Active Connections**. The users who are currently connected to the specified server library for the data source are listed.

Figure 10-2: Active Connections

Profile Name	Application	Server Library	Job Name	User Name	Job Number	Status
AMA	Query	SUPPORT25	SCTCPSRV	QUSER	563752	Active
DEP	Query	SUPPORT31	QJVACMDS...	QUSER	563683	Active
DEP	Query	SUPPORT31	SCTCPSRV	QUSER	563953	Active
DEP	Warehouse Manager	SUPPORT31	SCTCPSRV	QUSER	563949	Active
DFJ	Analyzer	SUPPORT35	QJVACMDS...	QUSER	562190	Active
DFJ	Query	PRHTRAIN4	PRHTRAIN4	QUSER	562585	Active
DFJ	Warehouse Manager	PRHTRAIN4	SCTCPSRV	QUSER	563801	Active
DFJ	Enterprise Reporting	PRHTRAIN4	PRHTRAIN4	QUSER	562585	Active
DRW	Query	SUPPORT31	SCTCPSRV	QUSER	563990	Active
EMM	Warehouse Manager	WR40000_01	SCTCPSRV	QUSER	563751	Active
FHB	Query	WR40000_01	SCTCPSRV	QUSER	563544	Active
JEP	Analyzer	WM350020P2	QJVACMDS...	QUSER	562887	Active
JEP	Analyzer for the Web	WM350020P2	QJVACMDS...	QUSER	562887	Active
MAC	Query	SUPPORT31	SCTCPSRV	QUSER	564044	Active
MAC	Query	SUPPORT31	SCTCPSRV	QUSER	564030	Active



To view all connections to the data source, click **View | All Connections on This AS/400**. You can see all users who are currently connected to server libraries on the data source. To view a user's complete name, right-click on the profile and then click **Properties**. To update the list, click **View | Refresh**.

More Information



See your ShowCase STRATEGY *Installation Guide*, Chapter 4.

Install