

ShowCase®
a division of SPSS

STRATEGY™ 4.5
Installation Guide

18796 001

For more information about SPSS® software products, please visit our Web site at <http://www.spss.com> or contact

SPSS Inc.
233 South Wacker Drive, 11th Floor
Chicago, IL 60606-6412
Tel: (312) 651-3000
Fax: (312) 651-3668

SPSS is a registered trademark and its other product names are the trademarks of SPSS Inc. for its proprietary computer software. No material describing such software may be produced or distributed without the written permission of the owners of the trademark and license rights in the software and the copyrights in the published materials.

The SOFTWARE and documentation are provided with RESTRICTED RIGHTS. Use, duplication, or disclosure by the Government is subject to restrictions as set forth in subdivision (c)(1)(ii) of The Rights in Technical Data and Computer Software clause at 52.227-7013. Contractor/manufacturer is SPSS Inc., 233 South Wacker Drive, 11th Floor, Chicago, IL 60606-6412.

Acrobat is a registered trademark of Adobe Systems Inc.
AS/400 is a registered trademark of IBM Corporation.
Essbase is a registered trademark of Hyperion Solutions Corporation.
Orion is a trademark of Evermind Data HB.
ShowCase is a registered trademark of ShowCase Corporation, a division of SPSS Inc.
Windows is a registered trademark of Microsoft Corporation.

General notice: Other product names mentioned herein are used for identification purposes only and may be trademarks or registered trademarks of their respective companies in the United States and other countries.

STRATEGY™ 4.5 Installation Guide
Copyright © 2001 by SPSS Inc.
All rights reserved.
Printed in the United States of America.

No part of this publication may be reproduced, stored in a retrieval system, or transmitted, in any form or by any means, electronic, mechanical, photocopying, recording, or otherwise, without the prior written permission of the publisher.

1 2 3 4 5 6 7 8 9 0 05 04 03 02

ISBN 1-56827-280-4

Preface

Welcome to the *STRATEGY™ 4.5 Installation Guide*. This preface provides the following information:

- What you'll find in this guide
- Where to find additional information
- How to find documentation online
- How to contact the documentation team to provide feedback about this guide

Adobe Acrobat (.pdf) versions of the STRATEGY guides are available on the STRATEGY CD-ROM. Viewing and printing the documents requires Adobe Acrobat Reader. If necessary, you can download it at no cost from www.adobe.com, or you can install it from the STRATEGY CD-ROM. Click Browse the CD-ROM, and open the Tools folder. Use the Adobe Acrobat Reader online Help to get answers to your questions about viewing and navigating the documents.

About This Guide

Chapter 1, "Technical Support," contains ShowCase contact information.

Chapter 2, "Release Overview," contains STRATEGY 4.5 enhancements and release notes.

Chapter 3, "Environment Requirements," contains hardware and software prerequisites.

Chapter 4, "Passwords and Licensing," describes passwords, licensing, and PC naming.

Chapter 5, "Installing Server Software," covers the iSeries® (AS/400®) software installation.

Chapter 6, "Installing and Uninstalling PC Software," covers the PC software installation, including network installations.

Chapter 7, "Setting Up Silent Installations," covers silent installations.

Chapter 8, "Setting Up an ODBC Data Source," explains how to configure ODBC data sources.

Chapter 9, "Connecting to the iSeries (AS/400)," explains how to access an iSeries (AS/400) with STRATEGY PC software.

Appendix, "Installing Essbase/400 Sample Applications," explains how to set up the Essbase sample applications and databases.

Additional Resources

- For information about STRATEGY iSeries (AS/400) software (Warehouse Manager Server and Essbase/400) maintenance, see the *STRATEGY 4.5 Administrator's Guide*.
- For information about product features unrelated to the STRATEGY installation, see the online Help in each application or the *Quick Start* guides on the SPSS Support Web site at <http://support.spss.com>. After you log on, click Documentation and then STRATEGY Manuals.
- For information about upgrading to STRATEGY 4.5, see the *STRATEGY 4.5 Upgrade Guide* at <http://support.spss.com/upgradeinfo/>.

Finding Documentation Online

You can view and download additional documentation after you install STRATEGY. You must have an Internet connection to view the documents. From the Windows Start menu, choose:

Programs
ShowCase STRATEGY 4.5
Documentation

Send Us Your Comments

Your comments are important to us. Please tell us what you think about the STRATEGY documentation by contacting:

Documentation Team
ShowCase, a division of SPSS
4115 Highway 52 NW, Suite 300
Rochester, MN 55901-0144
Tel: (507) 288-5922
E-mail: docfeedback@spss.com

Customer Service

If you have any questions concerning your shipment or account, contact your local office, listed on p. v. Please have your serial number ready for identification when calling.

ShowCase
A Division of SPSS
233 S. Wacker Drive.
11th Floor
Chicago, IL 60606
TEL +312.651.3000

ShowCase UK Limited
4 River Court, Albert Drive
Woking, Surrey GU21 5RP
TEL +44 (0) 1483 744300

ShowCase France
22-24 Avenue Hoche
75008 Paris
TEL +33 (0) 1 56 69 18 18

ShowCase Benelux
Buro & Design Center, B38
Heizel Esplanade Heysel
B-1020 Brussels
TEL +32 2 474 03 60

ShowCase Deutschland GmbH
Mergenthalerallee 79-81
D-65760 Eschborn
TEL +49 6196 6510 0

ShowCase Nederland
Lichtenauerlaan 102-120
Postbus 4365
3006 AJ Rotterdam
TEL +31 (0) 10 204 57 40

Spain SPSS
Luchana 23
5 Planta
28010, Madrid
TEL +39 91 443 37 00

SPSS Japan Inc
ShowCase Division
10/F Ebisu Prime Square,
1-1-39 Hiroo, Shibuya-Ku,
Tokyo 150
TEL +81 3-5466-5512

SPSS Australasia Pty Ltd
ShowCase Division
Level 9, 181 Miller Street
North Sydney, Australia
NSW 2060
TEL +61 2 9954 5560

Sweden AB
(formerly SPSS Scandinavia)
Target 1
Sundbyberg, Sweden
SE-17267
TEL +46 8 506 105 50

SPSS Singapore Pte. Ltd.
21 Cantonment Road
The Courtyard, Level 1
Singapore, Singapore
089742
TEL +65 324 5150

Contents

1	Technical Support	1
	Contacting Support	1
	Internet Support.	1
	North American Support.	2
	European Support.	2
	Japan and Asia Pacific Support	3
2	Release Overview	5
	Enhancements	5
	General Enhancements	5
	Enterprise Reporting Enhancements.	5
	Home Site Enhancements	9
	Documentation Enhancements	9
	Essbase/400 Enhancements.	9
	J.D. Edwards (JDE) Enhancements	10
	Query and Report Writer Enhancements	11
	Hyperion Analyzer and Hyperion Web Client Enhancements.	11
	Warehouse Builder Enhancements	12
	Warehouse Manager Server Enhancements	12
	Release Notes.	13
	General Release Notes	13
	Enterprise Reporting Release Notes	13
	Analyzer Release Notes	14
	Analyzer for the Web Release Notes	15
	Migrating from STRATEGY Analyzer to Hyperion Analyzer	15
	Hyperion Analyzer and Hyperion Web Client Release Notes	16
	Report Writer Release Notes	16
	Warehouse Builder Release Notes	16

3 Environment Requirements 17

iSeries (AS/400) Requirements	17
OS/400 Requirements	17
Disk Space	17
Server Preparation	17
J.D. Edwards Requirements	18
Warehouse Manager Server Requirements	18
Warehouse Manager Server Installation Tips	19
Additional Considerations	19
Essbase/400 Server Requirements	20
Essbase/400 Installation Tips	20
Client PC Software and Hardware Requirements	21
Analyzer for the Web Requirements	22
HTTP Server Requirements	22
Web Browser Requirements	22
Double-Byte System Requirements	22
Server Requirements for Enterprise Reporting	22
Non-DB2 Data Source Requirements	23
Warehouse Builder Requirements	23
Warehouse Builder Remote iSeries Setup	24
Windows NT, Windows 2000, and Windows XP Requirements	24

4 Passwords and Licensing 25

Naming PCs	25
Naming Tips	25
Changing the PC Name	25
Warehouse Manager Server Licensing	26
Concurrent Licensing	26
Per-Seat Licensing	27
Using Warehouse Manager Server Passwords	27
Temporary Passwords	27
Permanent Passwords	28
Entering Passwords	28

Using Essbase/400 Server Passwords	29
Temporary Product Serial Numbers	29
Permanent Product Serial Numbers	29
Managing Per-Seat Licenses	30
Transferring or Removing a PC License	30
Reinstalling STRATEGY PC Software.	30

5 *Installing Server Software* 31

Before You Install	31
Beginning Server Installation	32
Initial Installation Options	32
STRATEGY Servers.	32
National Language Support	33
Warehouse Manager Server Installation Options	33
Warehouse Manager Server Library.	33
STRATEGY Interlink for J.D. Edwards	34
Warehouse Manager TCP/IP Port Configuration	34
Work Management and CCSID Configuration	35
Orion Application Server	37
Enterprise Reporting Configuration	37
Enterprise Reporting Migration	38
Schedule JAR File Compile	38
Security Settings	39
Storage CCSID Configuration	39
Warehouse Builder Configuration	40
Sample Database.	41
Finalizing Warehouse Manager Server Installation Options	41
Essbase/400 Installation Options	41
Essbase/400 Server Library	41
Essbase/400 Server.	41
Starting Essbase	43
Finalizing Essbase/400 Server Installation Options.	44
Installing and Running on a Double-Byte System.	44
Using the Correct CCSID.	44
Using the Correct EBCDIC CCSID.	44
Changing CCSIDs for Profiles and Jobs	44
Setting Up Your PC for Double-Byte Character Data.	45

6 Installing and Uninstalling PC Software 49

Before You Begin	49
Enterprise Server Considerations	49
Hyperion Analyzer Considerations	50
Network Installation Considerations for Analyzer Users	50
Analyzer for the Web Considerations	52
Essbase Client Considerations	52
Running Installation Multiple Times	52
Accessing the STRATEGY CD via a Network	52
Installing STRATEGY to PCs	53
CD Installation	53
Network Installation	54
Uninstalling STRATEGY	55

7 Setting Up Silent Installations 57

Before You Begin	58
Creating a Silent Installation	58
Creating Multiple Silent Installations	59
Silent Setup.log File	60
Tips and Troubleshooting	61

8 Setting Up an ODBC Data Source 63

Adding a ShowCase ODBC Data Source	63
Modifying a ShowCase ODBC Data Source	65

9 Connecting to the iSeries (AS/400) 67

Connecting to Warehouse Manager Server.	67
Connecting with STRATEGY PC Applications	67
Connecting with the AS/400 Test and Configure Application	69
Troubleshooting Warehouse Manager Connection Failures	69
Troubleshooting Query and Report Writer	69
Troubleshooting TCP/IP	70
Connecting to Essbase/400	71
Troubleshooting Essbase/400 Connection Failures.	72

Appendix Installing Essbase/400 Sample Applications 73

Creating the Sample Applications	74
Moving Objects from the Client to Essbase/400 Server	75
Opening the Object.	76
Saving the Object.	76
Setting Up the Environment for Samppart and Sampeast	77
Creating the Partition User	78
Changing the Server Name in Sample Partition Definitions.	79
Loading and Calculating the Sample Databases	80
Demo Basic	81
Drinks Demo.	81
Sample Basic	82
Samppart Company	83
Sampeast East	84
Scsample Sales.	85
Providing User Access to the Sample Applications	86

Index 87

Technical Support

Contacting Support

Phone. Our goal is to provide one-on-one technical support. However, based on the complexity and/or frequency of calls, you may reach our phone-mail system. Leave your name, company name, and telephone number, and a support member will call you back.

Fax. Send your name, company name, and telephone and fax numbers along with the details of your request and the name of the product with which you need assistance.

Internet. Enter your request on the Support Web site. You can also use the site to find documentation, download patches, open a case, and participate in the customer forum. See “Internet Support” below.

E-mail. Include your name, e-mail address, company name, the feature that you have a question about, and your question or request.

Internet Support

Table 1-1
Internet addresses

Site	Address
Support Web site	http://support.spss.com
ShowCase, a division of SPSS, Web site	http://www.spssshowcase.com
Documentation team e-mail	docfeedback@spss.com

The following information is on the SPSS Support Web site at <http://support.spss.com>. To access STRATEGY support, click the ShowCase Division Products link.

Frequently asked questions. Find answers to some of the most common questions.

Frequently used resolutions. View the top resolutions of the week, month, and all time periods.

STRATEGY manuals. View and download the latest documentation, including the *Installation Guide*, *Administrator's Guide*, *Upgrade Guide*, and *Quick Start* guides.

Technical bulletins and newsletters. View and download technical bulletins or browse the newsletter archive for technical issues.

Patches. Download patches for all supported STRATEGY products.

Case information. Open a support case and view the status of your cases.

STRATEGY customer forum. Network with other maintenance customers in this discussion group.

Contact information. Find current phone and fax numbers and e-mail addresses for North America, Europe, and Japan/Asia Pacific.

North American Support

Table 1-2

North American services and support information

Topic	Phone	Fax	E-mail
North American support (relational products)	(507) 288-5922 Option 2, then option 1	(507) 287-2809	scsupport@spss.com
North American support (multidimensional products)	(507) 288-5922 Option 2, then option 2	(507) 287-2809	scsupport@spss.com
Product training and consulting services	(312) 261-6544	(847)779-6544	TrainingServices@spss.com

European Support

Table 1-3

European support information

Country	Language	Phone	Fax	E-mail
Austria	German	49 89 48 9074 333	49 89 44 83115	suppge@spss.de
Belgium	Dutch	32 2 477 17 00	32 2 474 03 63	eursupport@spss.com
Belgium	French	32 2 477 17 01	32 2 474 03 63	eursupport@spss.com
Belgium	German	32 2 477 17 02	32 2 474 03 63	eursupport@spss.com
Denmark	English	45 361 58731	32 2 474 03 63	eursupport@spss.com
France	French	33 155 21 25 32	32 2 474 03 63	eursupport@spss.com
Germany	German	49 89 48 9074 333	49 89 44 83115	suppge@spss.de
Italy	Italian and English	39 0280 663036	32 2 474 03 63	eursupport@spss.com
Luxembourg	French	32 2 477 17 03	32 2 474 03 63	eursupport@spss.com
Switzerland	French	41 227 100034	32 2 474 03 63	eursupport@spss.com
Switzerland	German	49 89 48 9074 333	49 89 44 83115	suppge@spss.de
The Netherlands	Dutch	31 205 82 94 96	32 2 474 03 63	eursupport@spss.com
United Kingdom	English	44 1483 719 202	44 1483 719 290	support@spss.co.uk

Japan and Asia Pacific Support

Table 1-4
Japan and Asia Pacific support information

Region	Phone	Fax	E-mail
Japan and Asia Pacific	81 3 5466 7187	81 3 5466 5622	jpscsupport@spss.com

Release Overview

For the latest release notes, see the *4.5 Readme (screadme.doc)*. If you are upgrading to STRATEGY 4.5, read the *STRATEGY 4.5 Upgrade Guide*. See Table 2-1.

Table 2-1
Supplemental documentation

Documentation	Location	Instructions
<i>STRATEGY 4.5 ReadMe</i>	Documentation Web page	From the Start menu, choose Programs > ShowCase STRATEGY 4.5 >Documentation.
<i>STRATEGY 4.5 ReadMe</i>	http://support.spss.com	After you log on to the ShowCase division support site, click Documentation >STRATEGY Manuals.
<i>STRATEGY 4.5 Upgrade Guide</i>	http://support.spss.com/upgradeinfo	No logon required.

Enhancements

General Enhancements

Support of Microsoft, Oracle, and Domino Data Sources

You can use Warehouse Builder to pull data from Microsoft Access and Excel, Oracle on AIX, Windows NT or Windows 2000, Lotus Domino, and SQL Server. You can also access Oracle data on Windows NT or Windows 2000 and Lotus Domino data via Query, Report Writer, and Enterprise Reporting. For setup instructions, see the Non-DB2 Data Source guides. To access them from the STRATEGY 4.5 menu, choose Documentation.

Enterprise Reporting Enhancements

There have been significant Enterprise Reporting enhancements.

Orion Application Server

If you are a current Enterprise Reporting user, you will use Orion Application Server instead of IBM HTTP Server or Websphere. Orion configuration is automated during installation.

SPSS Web Deployment Framework

Enterprise Reporting has been redesigned on top of a new, centralized, Java-based Web application framework. This new architecture uses a database repository for all objects and metadata, thereby simplifying administration. It also provides a robust set of new content management, security, personalization, and administration services that will result in new capabilities for consumers and publishers and faster, easier deployment of Web applications for administrators.

Unstructured Content

Enterprise Reporting 4.5 allows organizations to manage all types of enterprise information, including query and report definitions, query and report output, documents, images, manuals, etc. All of the information is stored in a central library that is accessible via a browser. This greatly simplifies the information landscape, making it easy for users to find exactly what they need.

Expiration Dates

Enterprise Reporting 4.5 enables information publishers to assign expiration dates to repository content. Expiration dates ensure that access to information is restricted as soon as information becomes obsolete. This ensures that everyone who accesses the library is viewing the current and correct version of every document.

Metadata Attributes

All information stored in the Enterprise Reporting 4.5 repository is cataloged by attribute, such as author, date, title, abstract, document type, and expiration date, ensuring that consumers receive the context that they need to easily find relevant content. In addition, the Enterprise Reporting solution provides a customizable library or catalog structure so that publishers can categorize information in whatever way makes sense in their organization. The library itself uses a folder-like hierarchy to store information, making it easy and intuitive to categorize and locate content and enabling users to model the content hierarchy after the structure of their business.

Security Attributes

Enterprise Reporting 4.5 incorporates a security model integrated with iSeries user and group profiles. Publishers can assign read, write, and administrative privileges, which can be granted on a user or group basis directly from a browser or from within Query or Report Writer when publishing information. Security attributes can be assigned globally to categories of information or users and to individual pieces of content. This ensures a flexible and granular security model that ensures that information stored in the central library is accessible only by those entitled to view it.

Search

Enterprise Reporting 4.5 enables information consumers to locate the right information quickly by conducting repository searches. Searchable attributes include title, abstract, author, and keywords.

Browser-based Publishing

Enterprise Reporting 4.5 enables information publishers to easily post information, including query and report definitions and result sets and unstructured content to the central library directly from their Web browser. In addition, users with appropriate authorities can edit content attributes, move or delete content, and modify the categorization of content all from a simple browser interface.

Personalization Services

Each Enterprise Reporting user is greeted with a personal home page. Users can customize the home page with direct links to frequently-used documents. They can also directly access the results of previously run reports, maintain personal contact information, and directly access content they own. The home page provides direct access to publishing and administrative tools for authorized users, and administrators can further customize the system to include shortcuts to other Web-based tools such as Analyzer for the Web or Web-based e-mail systems.

Customization Services

Enterprise Reporting 4.5 provides support for customized “flavors” that enable organizations to quickly and easily modify the look and feel of the application to match their organization’s corporate image or Web sites.

Browser-based Administration

Enterprise Reporting 4.5 provides a Web-based administrative interface that enables administrators to efficiently manage a number of system attributes via a browser and from remote locations. Administrators can manage user authorities, build and manage the content hierarchy and security, specify server settings and attributes, and audit user activities.

LDAP

Enterprise Reporting 4.5 can be configured to use the Lightweight Directory Access Protocol (LDAP) to authenticate users accessing the application.

Additional Enterprise Reporting Documentation

The following documents provide information on product installation, configuration, and Help access.

STRATEGY Installation Guide

See Chapter 5 for instructions on installing Orion Application Server for Enterprise Reporting.

Enterprise Reporting Administrator's Guide

Migrate existing objects and documents, configure Enterprise Reporting, and set up security. Before you install STRATEGY, you can find this guide at <http://support.spss.com>. Log on to the ShowCase division support site, click Documentation, and then STRATEGY Manuals.

After you install STRATEGY, find the guide on the Documentation Web page. From the Windows Start menu, choose:

Programs
ShowCase STRATEGY 4.5
Documentation

Browser Help and Tutorials

After you set up Enterprise Reporting, use the Help and tutorials to navigate Enterprise Reporting and get step-by-step instruction. Two Help systems are available from your browser: the SPSS Web Deployment Framework (SWDF) Help and the Enterprise Reporting Help. Each system comes with its own table of contents, index, and tutorials.

SWDF Help. SWDF is designed to work with a broad range of applications, some of which have specific requirements for publishing and managing data. As a result, the SWDF Help is a general Help system that covers basic browser tasks, such as using the Home page and locating and viewing documents using the Catalog. Availability of specific features documented here may vary by site. For example, categories, passwords, URLs, security settings, and other features are configured locally at each site by the administrator and may vary slightly depending on the application deployed within the framework.

To access the SWDF Help:

- ▶ Click the Help icon from any of the main SWDF pages such as Home, Catalog, or Publisher. Working with SPSS Web Content appears in the browser title bar.

To access the SWDF Tutorial:

- ▶ From the SWDF Help table of contents, click Additional Resources, and then click any of the tutorial links.

Enterprise Reporting Help. Enterprise Reporting is an application designed to work within the SPSS Web deployment framework. The Enterprise Reporting application has a Help system specific to Enterprise Reporting tasks and features.

To Access the Enterprise Reporting Help:

- ▶ Click the Help icon from an Enterprise Reporting screen such as Submitted Reports, or click Help when you open an Enterprise Reporting document in your browser (for example, a query or report). Working with Enterprise Reporting appears in the browser title bar.

To access the Enterprise Reporting Tutorial:

- ▶ From the Enterprise Reporting Help table of contents, click Additional Resources. Then click any of the Enterprise Reporting tutorial links.

Home Site Enhancements

To use Enterprise Reporting and/or Analyzer for the Web 4.5 with your existing STRATEGY Home Site, see *Migrating Home Site to STRATEGY 4.5* to update the STRATEGY Home Site links. You can access this document on the Documentation Web page from the STRATEGY 4.5 menu.

Documentation Enhancements

You can view and download additional documentation after you install STRATEGY. You must have an Internet connection to view the documents.

To launch the Documentation Web page:

- ▶ From the Windows Start menu, choose:
 - Programs
 - ShowCase STRATEGY 4.5
 - Documentation

Essbase/400 Enhancements

STRATEGY 4.5 supports Hyperion Essbase 6.1 features and functions.

MaxL Command Interface

Essbase/400 supports the MaxL command interface. Users can administer Essbase/400 Server from an iSeries command line using MaxL/400. Traditionally, ESSCMD/400 has provided functionality consistent with the PC ESSCMD (ESSCMD and ESSCMDW). Hyperion has positioned MaxL as the next generation of ESSCMD.

While ESSCMD/400 and the ESSCMD API continue to be supported, many new Essbase features are accessible only through the MaxL/400 interface. Thus, we recommend using MaxL/400 to automate and maintain your Essbase/400 Server. Users can use MaxL in script, command line, or interactive mode. For help with specific MaxL commands, see the Hyperion *MaxL User's Guide*. ESSCMD/400 users should refer to the *STRATEGY Administrator's Guide*.

New Server Commands

RUNMAXLSTM command. Start the command line interface to issue MaxL/400 commands from an OS/400 command line.

ESSMSH command. Process an input or script file containing MaxL statements.

For more information about these commands, see the *STRATEGY Administrator's Guide*. For help with specific MaxL commands, see the *Hyperion MaxL User's Guide*.

J.D. Edwards (JDE) Enhancements

Non-iSeries Profile Sign-On

Previously, JDE OneWorld users needed an OS/400 user profile for STRATEGY to recognize their environment information. The new SETJDEOWA command enables STRATEGY to recognize environment information for OneWorld users who don't have an iSeries (AS/400) user profile.

Non-iSeries profiles cannot be used with Warehouse Builder, Warehouse Manager Client, or Enterprise Reporting. For more information about this command, see the *STRATEGY Administrator's Guide*.

Editing ShowCase.cfg to Use an Alternate F0094 File

The *F0094* file in JDE OneWorld usually contains the Master Library List data. STRATEGY JDE OneWorld integration uses this file to set the library list upon connecting to the database through the Web or application interface. Occasionally, the JDE OneWorld environment administrator may choose to omit the *F0094* file in the OneWorld Client environment and use information in a Client Access Data Source. Since STRATEGY cannot determine the data source used for the library lists, a new method uses an alternate file (which must contain *F0094* data). This method involves duplicating the *F0094* file and editing the configuration file (*showcase.cfg*).

To set up this alternate configuration, see the *STRATEGY Administrator's Guide*.

User Defined Codes (UDC)

During the initial JDE system setup, an administrator will customize descriptions for users based on category codes that exist with the system. A user can select these UDC customized descriptions in the STRATEGY columns display. In STRATEGY 4.5, UDC customized descriptions are available in Query, Report Writer, and when running interactive reports via a browser using Enterprise Reporting.

Multiple Library List Environments

STRATEGY retrieves library list environments that are set up in the JDE environment. A user who has been set up in the JDE system to have multiple library list environments has the option of selecting an environment on the initial connection or having one set as the default. In STRATEGY 4.5, an enhancement allows the prompting for library list environments when running interactive reports via a browser using Enterprise Reporting. Another enhancement allows prompting for library list environments if the environment is defined for the users group instead of the individual profile.

Query and Report Writer Enhancements

The Save to ShowCase Server dialog boxes have been enhanced to allow you to specify document properties displayed to Enterprise Reporting users in the browser. These document properties include general information (for example, title and description) and read/write security settings.

Figure 2-1

New Save to ShowCase Server dialog box

The screenshot shows a dialog box titled "Save To ShowCase Server" with a close button (X) in the top right corner. The dialog has three tabs: "Location", "General", and "Security". The "General" tab is selected. The fields are as follows:

- Title: Sales.dbq
- Author: Joe Smith
- Language: (empty)
- Keywords: (empty)
- Description: (empty text area)
- Template: Default
- Expiration Date: Never, Expires on 10/17/2000

At the bottom of the dialog are three buttons: "Save", "Cancel", and "Help".

Hyperion Analyzer and Hyperion Web Client Enhancements

For enhancement information, see the Hyperion documentation accompanying your Hyperion Analyzer CD.

Warehouse Builder Enhancements

The STRDD (Start data distribution) and SBMDD (Submit data distribution) commands now run Warehouse Builder distribution sets by set (object) name (OBJNAME).

For example, the following commands run the distribution set named *Sales*:

```
STRDD OBJNAME('Sales') OBJID(*NONE)
```

or

```
STRDD OBJNAME('Sales')
```

You can still run the commands by set (object) ID (OBJID). For example, the following commands run the distribution set with an ID of 51:

```
STRDD OBJNAME(*OBJID) OBJID(51)
```

or

```
STRDD OBJID(51)
```

If you are running sets from your own CL programs with the object IDs hard-coded in either the STRDD or SBMDD command, and you restore Warehouse Builder information into a server library already containing distribution definitions, the object IDs of the distribution sets will change. To avoid this problem, use the object name of the distribution set in the STRDD or SBMDD commands. See the *STRATEGY Administrator's Guide*, for more information.

Warehouse Manager Server Enhancements

Installation

In STRATEGY versions prior to 4.0, the AOS and Warehouse Manager Server (SCSERVER) used two separate ports. However, with versions 4.0 and later, the AOS port is incorporated into the Warehouse Manager Server port. If you are upgrading to version 4.5 and you use Analyzer, you can retain both ports, but future STRATEGY releases will support only one port. For information, see “Warehouse Manager TCP/IP Port Configuration” on p. 34.

Authority Requirements Removed

The STRSCSVR command now requires only *JOBCTL authority. The ENDSCSVR command now requires only *JOBCTL and *ALLOBJ authority.

New Server Commands

INSTORI command. If you are installing Enterprise Reporting, you must install Orion Application Server, available during server installation. If you defer Orion installation at that time, you can use the INSTORI command to install it later with the STRATEGY CD. The command requires QSECOFR or equivalent authority (*ALLOBJ, *IOSYSCFG, *SAVSYS, *JOBCTL, and *SECADM special authorities are needed).

STRORI command. Starts Orion Application Server. Requires *JOBCTL authority.

ENDORI command. Ends Orion Application Server. Requires *JOBCTL and *ALLOBJ authority.

For more information about the Orion Application Server commands, see the *Enterprise Reporting Administrator's Guide*.

SETJDEOWA command. Previously, JDE OneWorld users needed an OS/400 user profile for STRATEGY to recognize their environment information. The new SETJDEOWA command enables STRATEGY to recognize environment information for OneWorld users who do not have an iSeries (AS/400) user profile. For more information, see the *STRATEGY Administrator's Guide*.

MIGSCREP command. The MIGSCREP command migrates STRATEGY 3.0, 3.5, 4.0, or 4.1 Information Directory objects and documents to the STRATEGY 4.5 Web deployment framework. If you defer migration during Warehouse Manager Server or Orion Application Server installation, use the iSeries MIGSCREP command to schedule the migration. The command requires QSECOFR or equivalent authority (*ALLOBJ, *IOSYSCFG, *SAVSYS, *JOBCTL, and *SECADM special authorities are needed).

Release Notes

For the latest Release Notes, see the *4.5 Readme (screadme.doc)*. You can find the *Readme* in the following locations:

- At <http://support.spss.com>. After you log on to the ShowCase division support site, click Documentation, then STRATEGY Manuals.
 - After installation, you can find it in the root folder in which you installed STRATEGY client components.
 - After installation, you can find it on the Documentation Web page:
- From the Windows Start menu, choose:
- Programs
 - ShowCase STRATEGY 4.5
 - Documentation

General Release Notes

APPC communications protocol is no longer supported.

Enterprise Reporting Release Notes

Migrating to Enterprise Reporting 4.5

If you are a new or current Enterprise Reporting user, you must install Orion Application Server, an integrated application server and Web server package. This server will replace your existing HTTP server and WebSphere. You can install the Orion server when you install the server software, or you can install it later with the INSTORI command.

If you used Enterprise Reporting in STRATEGY 3.0, 3.5, 4.0, or 4.1, you must migrate the objects and documents in your current Information Directory to the STRATEGY 4.5 Web deployment framework. You won't have access to your existing Enterprise Reporting objects until you migrate.

For information, see the *Enterprise Reporting Administrator's Guide*. Before you install STRATEGY, you can find this guide at <http://support.spss.com>. After you log on to the ShowCase division support site, click Documentation, then STRATEGY Manuals.

After you install STRATEGY, you can find the guide on the Documentation Web page.

- ▶ From the Windows Start menu, choose:

- Programs
- ShowCase STRATEGY 4.5
- Documentation

Reports Manually Copied to Enterprise Reporting

Reports must be saved to the server through Query, Report Writer, or the Enterprise Reporting Publisher in the browser to appear in Enterprise Reporting. Manually copying reports via WRKLNK, Client Access, or FTP is not supported. Also, reports previously copied will not appear in Enterprise Reporting.

Submitting a Dynamic Report with Prompting

- Prompts are not supported if a report references an external data source not mapped in the ODBC/JDBC mapping tables. Instead the query will process "as is."
- Prompts that require a PC file as the data source are not supported.
- STRATEGY 3.0 queries (*.dbq*) and reports (*.rpt*) with prompting must be saved in Query or Report Writer 4.0 or later for the prompting to work with Dynamic Web Reporting.

Analyzer Release Notes

- Form linking is supported for both view linking and data cell linking, but links can only be created in views, not in forms. To add a link to a view and save it, you must edit the actual view using Analyzer.
- In a form containing more than one view, all views will show custom filtering, if applicable.
- If you drill down on a member that was not selected in any of the views in the form you are linking to, Analyzer will put that member in the filters.
- If you drill down on a member whose dimension does not exist in the data model view that is in the form that you are linking to, the form will load with no changes at all.
- If you drill down on a member that does not exist (but the dimension does) in the data model view that is in the form that you are linking to, Analyzer will put that member in the column/row and show all zeros for data.
- If you drill down on a member that doesn't exist in a linked component (for example, a drop-down list) that is in the form that you are linking to, the member will not appear as the current selection in the component.

Analyzer for the Web Release Notes

- Analyzer for the Web requires Internet Explorer 5.5 or later.
- Data models with prompts or variables are not supported.
- When you try to link forms, the form will open but the members you filtered will not be sent to the next view. You will receive a message stating this.

Migrating from STRATEGY Analyzer to Hyperion Analyzer

Beginning with STRATEGY 4.0, two versions of Analyzer are available: STRATEGY Analyzer and Hyperion Analyzer. STRATEGY Analyzer continues to use the iSeries (AS/400) as a repository while Hyperion Analyzer uses Oracle, SQL Server, Paradox, and DB2 on NT. Likewise, STRATEGY Analyzer for the Web will continue to use the iSeries while the Hyperion Web Client will require an NT server.

If you are migrating to Hyperion Analyzer or Hyperion Web Client or are considering migrating, this section contains general considerations, migration issues, and installation issues for end users. For administrative Hyperion Analyzer migration information such as installing Hyperion Analyzer, migrating groups and views, and database maintenance, see the *STRATEGY 4.5 Upgrade Guide* at <http://support.spss.com/upgradeinfo/>.

Considerations

- The Disable print/export, Report Cancel Retrieval, and Cache Member List features of STRATEGY Analyzer are not available in Hyperion Analyzer.
- Support for data models in STRATEGY Analyzer for the Web is not available in Hyperion Web Client or Hyperion Analyzer. Access to relational data is supported through virtual cubes in Hyperion Web Client and Hyperion Analyzer.
- For more information about Hyperion Analyzer features, see the Hyperion documentation.

Installation Issues

The Hyperion Analyzer CD does not install Essbase Runtime Client, Virtual Cube support (ODBC), or the Group Export utility. For more information, see “Hyperion Analyzer Considerations” on p. 50 in Chapter 6.

Migration Issues

The following list includes tasks that you may need to perform as a part of the migration process:

- When migrating your Analyzer groups from STRATEGY Analyzer to Hyperion Analyzer, export your groups from STRATEGY Analyzer and import them into Hyperion Analyzer. For more information about migrating groups and about the STRATEGY Group Export tool, see the *STRATEGY 4.5 Upgrade Guide* at <http://support.spss.com/upgradeinfo/>.
- A STRATEGY Analyzer form that is imported and loaded into Hyperion Analyzer may not display the individual tabs for a Tab Set box if the panel containing the Tab Set box is too narrow. If the panel has a splitter, you can increase the width of the panel and see the individual

tabs. If the panel does not have a splitter, you must open the form in Analyzer Designer and add a splitter to that panel.

- Because the Chart Tool has been updated in Hyperion Analyzer, you will see differences in chart views in terms of layout, background, colors, etc.
- All lists created in STRATEGY Analyzer must be recreated in Hyperion Analyzer.
- If you are migrating from STRATEGY 3.0 and your calculations were created in a prior release without being resaved in STRATEGY 3.0, the calculations will not migrate.
- If a view was created prior to STRATEGY 2.5 and migrated to 2.5 or later and was never resaved, calculations, traffic lighting, and formatting will not migrate.

Migrating STRATEGY Analyzer Groups

To migrate your STRATEGY Analyzer groups to Hyperion Analyzer, you use the STRATEGY Group Export utility and the Hyperion Import/Export utility. For more information, see the *STRATEGY 4.5 Upgrade Guide* at <http://support.spss.com/upgradeinfo/>.

Hyperion Analyzer and Hyperion Web Client Release Notes

For release notes and migration information, see the Hyperion documentation accompanying your Hyperion Analyzer CD.

Report Writer Release Notes

You can no longer insert pictures of file types *.gif* and *.wmf* into Report Writer.

Warehouse Builder Release Notes

When Warehouse Builder runs a definition, it pulls data in blocks of records, inserts the data into the target table, and converts the data mapping errors in the rows of the blocks to null values.

Environment Requirements

This chapter describes the environment requirements for STRATEGY installation and setup.

Warning: If you fail to meet the software requirements in this chapter, STRATEGY may not function properly. Read this information carefully.

iSeries (AS/400) Requirements

OS/400 Requirements

STRATEGY iSeries software requires OS/400 Version 4, Release 5 (V4R5) or later.

Disk Space

Make sure that you have enough free disk space to install the servers.

Table 3-1

Disk space required for server installation

Component	Space Required
Warehouse Manager Server	280MB
Essbase/400 Server	150MB
Temporary Space	280MB (After installation, this space is freed when the installer signs off.)

Server Preparation

If you are a new or current Enterprise Reporting user, *or* if you will save, share, and manage query and report definitions via ShowCase Server, you must install Orion Application Server. When you install Orion, you will be prompted to enter the Orion Install key. If you do not have a key, contact ShowCase Support before you begin server installation.

Back Up Existing Libraries

You must install Warehouse Manager and Essbase/400 servers in separate installation libraries. If you plan to install in an existing Warehouse Manager Server library, first stop the server in that library and verify that no users are connected. For instructions on stopping the servers, see the *STRATEGY Administrator's Guide*.

Always back up your Warehouse Manager and Essbase/400 libraries before installation. Although the servers will install over existing 3.0, 3.5, 4.0, or 4.1 server libraries, we recommend backing up your libraries to guard against installation failure. See the *STRATEGY Administrator's Guide*.

Configure and Start TCP/IP

You must configure and start iSeries TCP/IP before installing the servers. Someone trained in TCP/IP network administration should ensure proper setup, use, and maintenance of TCP/IP.

For more information on configuring TCP/IP, see the *STRATEGY Administrator's Guide*. Also see your IBM documentation.

J.D. Edwards Requirements

STRATEGY 4.5 supports versions A7.x and A8.x of J.D. Edwards WorldSoftware and version B7.33.x of J.D. Edwards OneWorld Software.

STRATEGY provides user profile, data dictionary, and cost center security support for these WorldSoftware versions. Due to internal changes to the WorldSoftware database structure, user-developed queries or other STRATEGY applications may not be interchangeable across WorldSoftware release boundaries. See your J.D. Edwards documentation for changes to WorldSoftware database structures.

Administrators can now use the SETJDEOWA command to enable STRATEGY to recognize environment information for OneWorld users who do not have an iSeries user profile. For instructions, see the *STRATEGY Administrator's Guide*.

Warehouse Manager Server Requirements

The server installation requires and verifies the following requirements:

- OS/400 V4R5 or later
- Java Developer Kit (option during OS/400 installation)
 - V4R5:** 5769JV1 Java Developer Kit 1.3
 - V5R1:** 5722JV1 Java Developer Kit 1.3
- Toolbox for Java installed
 - V4R5:** 5769JC1 Toolbox for Java
 - V5R1:** 5722JC1 Toolbox for Java

- QShell Interpreter
V4R5: 5769SS1 OS/400 QShell Interpreter
V5R1: 5722SS1 OS/400 QShell Interpreter

S36 files are no longer supported. You must use DB2/400 externally described files.

Warehouse Manager Server Installation Tips

- Install Warehouse Manager Server in an existing Warehouse Manager Server library of version 3.0 or later or in a new library. Do not install it in an existing user library or an Essbase/400 library.
- Configure and start iSeries (AS/400) TCP/IP before you enable STRATEGY TCP/IP. You do not have to enable STRATEGY TCP/IP support at installation time. You can enable it later using the CHGSCSVRA command.
- Remember the IP address of your iSeries (AS/400) and the port number assigned to each library. You and your users will need this information to complete ODBC setup.
- If you are installing Enterprise Reporting, remember your Orion Application Server port number for use in the browser.

During Warehouse Manager Server installation, you will be prompted to add the Warehouse Manager library to QALWUSRDMN. The default setting for the QALWUSRDMN system value is *ALL. If that setting isn't acceptable for your environment, before you install Warehouse Manager Server, specify the following libraries for QALWUSRDMN: QSYS, QRPLOBJ, QTEMP, and the Warehouse Manager Server library (default SCSERVER).

These libraries help Warehouse Manager Server install correctly and help prevent unpredictable results when you run client applications. To work with system values, use the iSeries (AS/400) command WRKSYSVAL and choose option 2 to change QALWUSRDMN.

Additional Considerations

- Warehouse Manager Server sets *PUBLIC Exclude as the default authority to Warehouse Manager Client and Warehouse Builder. A profile with *ALLOBJ authority can use Warehouse Manager Client to authorize other users to access Warehouse Manager Client or Warehouse Builder.
- The user profile QUSER should have the Maximum Allowed Storage (MAXSTG) parameter set to the default *NOMAX. Otherwise, you may have difficulty connecting through TCP/IP and running large queries in batch.
- ShowCase security applied to a supplemental group (via Warehouse Manager Client) is not supported. However, AS/400 security applied to a supplemental group (via a non-ShowCase interface) *is* supported. iSeries authorities applied to a user profile as a result of supplemental groups will be honored when the user is running applications connected to Warehouse Manager Server. Thus, STRATEGY supports iSeries security against supplemental groups, but it does not recognize STRATEGY security applied to a supplemental group.

Essbase/400 Server Requirements

- OS/400 V4R5 or later
- TCP/IP configured and started on the iSeries (AS/400)
- Java Developer Kit
 - V4R5:** 5769JV1 Java Developer Kit 1.3
 - V5R1:** 5722JV1 Java Developer Kit 1.3

If you have more than one Essbase/400 Server installed on a single iSeries, each server must have its own IP address. For more information, see “Essbase/400 Server” on p. 41 in Chapter 5.

Essbase/400 Installation Tips

- Install Essbase/400 in an existing Essbase/400 library of version 3.0 or later or in a new library. Do not install it in an Essbase/400 library of version 2.5 or earlier, an existing user library, or a Warehouse Manager Server library.
- If you are reinstalling an existing Essbase/400 library that is in use, stop the server before installation. See the *STRATEGY Administrator’s Guide*.
- During Essbase/400 installation, you will be prompted to add the Essbase/400 library to QALWUSRDMN. The default setting for the QALWUSRDMN system value is *ALL. If that setting is not acceptable for your environment, before you install Essbase/400, specify the following libraries for QALWUSRDMN: QSYS, QRPLOBJ, QTEMP, the Warehouse Manager Server library (default SCSEVER), and the Essbase/400 Server library (default ESSBASE). These libraries help Essbase/400 install correctly and help prevent unpredictable results when you run client applications (including Analyzer). To work with system values, use the iSeries (AS/400) command WRKSYSVAL and choose option 2 to change QALWUSRDMN.
- On double-byte systems, if you are using *HEX CCSID value 65535, the language identifier for the job may cause a default CCSID value of 5026 that does not support lowercase English characters. If you must run the job under the *HEX CCSID, change the language ID of the job so OS/400 does not calculate 5026 as the default CCSID. For example, configure the job to use ENP as the language ID. OS/400 will calculate a default CCSID value of 37, which is supported by Essbase/400. For more information, see “Installing and Running on a Double-Byte System” on p. 44 in Chapter 5.
- Essbase/400 data load and dimension build operations are most efficient with SQL interface support. The SQL interface support is shipped as part of the base Essbase/400 package; you do not need to install a separate SQL interface module.

To set up your iSeries to allow SQL loads:

- ▶ At an iSeries command line, type WRKRDBDIRE and press Enter. If you do not see an entry for *LOCAL, use option 1 to add a *LOCAL entry.

Client PC Software and Hardware Requirements

Table 3-2 lists requirements for the STRATEGY PC software applications.

Table 3-2
PC requirements

Computer	IBM or IBM-compatible personal computer
Operating System	One of the following Microsoft Windows operating systems: Windows 98, Windows 2000, Windows NT 4.0 (Service Pack 5 or later), or Windows XP <i>Note:</i> The Enterprise Server and the Hyperion Analyzer for the Web server require Windows NT 4.0 (Service Pack 5 or later), Windows 2000, or Windows XP.
Web Browser	Internet Explorer 5.5 or later, or Netscape Navigator 6.2 or later.
Microprocessor	Pentium 133 or the minimum required by your operating system.
RAM	64MB of RAM or the minimum required by your operating system.
Hard Disk Space	300MB or greater available hard disk space for the following applications (space needed will vary depending on components selected): Warehouse Manager Client Analyzer Warehouse Builder Report Writer (including Query) Query Excel Add-in Query Lotus Add-in Essbase Application Manager Essbase Spreadsheet Add-in for Lotus Millennium or later Essbase Spreadsheet Add-in for Excel 97 and Excel 2000 Enterprise Server (requires Windows NT, Windows 2000, or Windows XP) Sample files
Display	VGA monitor (640 x 480 resolution minimum; 800 x 600 or more recommended).
Network Protocol	Warehouse Manager Server requires a TCP/IP connection to the iSeries. For Analyzer and Essbase client applications (Application Manager, spreadsheet add-ins), configure a Windows Socket compliant TCP/IP connection between your client PC and your Essbase/400 Server. See the <i>STRATEGY Administrator's Guide</i> .
Other	CD-ROM drive (or network access to a CD-ROM drive).

Analyzer for the Web Requirements

HTTP Server Requirements

To use Analyzer for the Web, you must install and configure an HTTP server. If you also use Enterprise Reporting, use Orion Application Server as an HTTP server. It is available during server installation. If you do not use Enterprise Reporting, you can use the IBM HTTP server.

- To install Orion, see “Orion Application Server” on p. 37 in Chapter 5.
- To set up Orion as the HTTP server, see “Configuring the Orion Application Server for Analyzer for the Web” in Chapter 5 of the *STRATEGY Administrator’s Guide*.
- To set up the IBM HTTP server, see “Configuring the iSeries HTTP Server” in Chapter 5 of the *STRATEGY Administrator’s Guide*.

If you want external users to access Analyzer for the Web through a firewall, additional configuration is required.

- To configure firewall support for Orion or Websphere, see “Analyzer for the Web Support for Firewalls and Proxy Servers” in Chapter 5 of the *STRATEGY Administrator’s Guide*.

Web Browser Requirements

Analyzer for the Web requires Internet Explorer 5.5 or later.

For information and requirements on Hyperion’s Analyzer version for NT, see the Hyperion documentation.

Double-Byte System Requirements

If you are using a double-byte character set (DBCS) to represent character data (for example, Japanese or Chinese), use these steps to set up your systems.

- ▶ Install Client Access version V4R5 or later from your iSeries. The path is:
/qibm/ProdData/CA400/Express/Install/Image
- ▶ Install STRATEGY as described in Chapter 5 and Chapter 6.
- ▶ To complete your DBCS setup, follow the steps in “Setting Up Your PC for Double-Byte Character Data” on p. 45.

Server Requirements for Enterprise Reporting

Enterprise Reporting enables users to access (via a Web browser) shared queries and reports saved to Warehouse Manager Server. It requires the following server components:

- IBM Host Servers
 - V4R5** requires 5769SS1 OS/400 Host Servers
 - V5R1** requires 5722SS1 OS/400 Host Servers
- Java Group PTFs
 - V4R5** requires SF99068
 - V5R1** requires SF99069
- Database Group PTFs
 - V4R5** requires SF99105
 - V5R1** requires SF99501
- Warehouse Manager Server
- Orion Application Server. You can choose to install this server during server installation. For instructions, see Chapter 5.

For a complete list of the Enterprise Reporting requirements, see the *Enterprise Reporting Administrator's Guide* at <http://support.spss.com>. After installation, you can find the guide on the Documentation page:

- From the Windows Start menu, choose:

- Programs
 - ShowCase STRATEGY 4.5
 - Documentation

Non-DB2 Data Source Requirements

If you are using data sources such as SQL Server, Oracle, or Domino, you can find the requirements and setup instructions at <http://support.spss.com>. After you log on, click Documentation, and then STRATEGY Manuals.

Warehouse Builder Requirements

If you are using iSeries data sources, the following are the installation requirements and recommendations for Warehouse Builder.

- You must have an iSeries for a control server. The control server must be the same STRATEGY version as the client version you are installing (4.5).
- By default, only users with *ALLOBJ authority can use Warehouse Builder. To authorize users, grant them application authority in Warehouse Manager Client.
- Distribution performance is better if the target table is not journaled. To avoid using journaled tables: verify that the target collection is created using the CRTLIB command rather than the SQL command CREATE COLLECTION. Also, open Warehouse Builder, and from the Tools menu, choose Options. On the Defaults tab, make sure Create Target SQL Collection is not selected. Deselected is the default setting.
- The job queue SCDDJOBQ is added to the subsystem that you choose during installation. The maximum number of jobs on the Job Queue entry of the subsystem is set to *NOMAX by default.

- A routing entry is added to the subsystem that you choose during installation (if the routing entry doesn't exist). It uses the class QGPL/QWCPLSUP. If you want to use a different class, you can change it after the installation is complete. For details, see Chapter 5 of the *STRATEGY Administrator's Guide*.
- If either of the Warehouse Manager Server options Exclude users from libraries by default or Exclude users from tables by default is selected, you must have *ALLOBJ or data administrator authority to access all information when using Warehouse Builder to create tables.
- OS/400 V4R5 users only: To work with Warehouse Builder definitions that contain JDE data and UDC columns, you must apply the following PTF or the definitions will not run: 5769SS1 V4R5M0 SF64377.

Warehouse Builder Remote iSeries Setup

- To use Warehouse Builder with remote iSeries, distributed relational database architecture (DRDA) communication is required between each remote iSeries and the control server iSeries. If your iSeries are not connected and you need help configuring DRDA, consult your IBM documentation.
- You must enable the DRDA-compliant communications between your control server and remote iSeries. You can use SNA or TCP/IP communications for your DRDA connections.
- The iSeries acting as the control server must have a relational database directory entry for each remote iSeries. To add the entry, use the ADDRDBDIRE command on your control server.

Windows NT, Windows 2000, and Windows XP Requirements

For all types of client installations, you must have administrator authority to your PC registry to install STRATEGY. For more information, see your Windows documentation.

Passwords and Licensing

Naming PCs

Each PC has one name for connecting to all Warehouse Manager Server libraries across all iSeries (AS/400s). Therefore, the PC name must distinguish your PC from others running STRATEGY. Under per-seat licensing, the PC name registers your computer as a licensed PC to a Warehouse Manager Server library.

All clients must enter a PC name when installing STRATEGY. The default name that appears during installation is based on the PC's Windows network name (if one exists). The name entered during installation appears during subsequent product installations.

The PC name is case sensitive and can contain up to 50 characters, including:

A-Z	>	'	-
a-z	%	(.
+	&)	/
<	*	,	:
=	“	_	;

Naming Tips

You may want to establish company-wide PC naming guidelines that make sense to you and your users to simplify license maintenance. For example, if PCs stay with users when the users move, you may use naming conventions based on user names. But if PCs stay with a department, you may use naming conventions based on a department name or code. Choose the naming convention that suits your situation, and be consistent with those guidelines.

Changing the PC Name

Windows NT

- ▶ From the desktop, right-click on Network Neighborhood.
- ▶ On the Network Identification tab, your PC name appears.
- ▶ To change the name, click the Change button.

Windows 2000

- ▶ From the desktop, right-click on My Computer.
- ▶ On the Identification tab, your PC name appears.
- ▶ To change the name, click the Properties button.

Using the AS/400 Test Connection

After installation, you can see or change your PC name using the AS/400 Test Connection.

- ▶ From the Windows Start menu, choose:
 - Programs
 - ShowCase STRATEGY 4.5
 - AS/400 Test Connection
- ▶ Click Global Settings.
- ▶ On the Licensing tab, enter a name for your PC.

If you have previously connected to Warehouse Manager Server under your old PC name, the new PC name uses a new license when it successfully connects to Warehouse Manager Server, and the old PC name retains a license. In other words, using a different PC name uses another PC license. If this occurs, you can remove the old PC license through Warehouse Manager Client. To remove a PC license, see “Transferring or Removing a PC License” on p. 30.

Warehouse Manager Server Licensing

Depending on your agreement, licensing for Warehouse Manager Server will be per-seat or concurrent.

Concurrent Licensing

Warehouse Manager Server requires one password from each STRATEGY client product before enabling connections for the software. Concurrent license passwords allow a defined number of simultaneous connections to the iSeries but an unlimited number of PC installations. Warehouse Manager Server monitors the number of users connected simultaneously, and when you reach the maximum number of licensed connections, the server prohibits connections until one or more users disconnect. Connection is granted on a first-come, first-served basis.

Per-Seat Licensing

Under per-seat licensing, you purchase a particular number of PC licenses for specific STRATEGY products to enable users to connect to Warehouse Manager Server data sources on one or more of your iSeries (for example, x licenses for Query, x licenses for Report Writer). The first time a user connects to the Warehouse Manager Server data source, the PC name is checked, and, if the name is valid and unique and there are available licenses to that product, the user is granted a license to the product and is allowed to continue.

Once a PC initializes a license, it reserves one license regardless of its connection status or the number of Warehouse Manager Server libraries on a single iSeries to which it can connect. When the maximum number of licenses is used (the total number of PC licenses per product purchased), no additional connections to the data source are allowed. A user attempting to connect after the maximum number of licenses are in use will receive an error message.

Then you must either remove unused licenses or purchase additional licenses. When you purchase additional licenses, a new password allows you to increase your maximum number of licenses. If a PC license is removed, that PC cannot connect to Warehouse Manager Server until the PC software is reinstalled. To remove a PC license, see “Transferring or Removing a PC License” on p. 30.

Using Warehouse Manager Server Passwords

Passwords control STRATEGY licensing. The servers (Warehouse Manager and Essbase/400) each maintain the application passwords licensed to them.

When you install Warehouse Manager Server, you will have demo access to all STRATEGY PC software that connects to the server, including Warehouse Manager Client, Warehouse Builder, Query, Report Writer, Analyzer, Analyzer for the Web, and Enterprise Reporting. Demo access allows you to try the software for 60 days.

For the Warehouse Manager Server to access Essbase/400, a STRATEGY Essbase/400 license must be available or the connection will be rejected. For more information, see “Using Essbase/400 Server Passwords” on p. 29.

To use Warehouse Manager Server products beyond the 60-day demo period, use temporary or permanent passwords.

Temporary Passwords

Temporary passwords expire on a specific date. Occasionally, temporary passwords are issued if the demo period has expired and you have not received a permanent password, or if you are conducting a training class and need temporary additional access to STRATEGY. Contact your sales representative or ShowCase support for temporary passwords.

Permanent Passwords

Permanent passwords never expire. However, you must have a new password if you upgrade to a different iSeries model or serial number.

Warehouse Manager Server requires separate passwords for the following products:

- Warehouse Manager Client (includes Query)
- Warehouse Builder
- Report Writer
- Enterprise Reporting
- Analyzer
- Analyzer for the Web

Entering Passwords

You can enter Warehouse Manager Server passwords in the following ways.

To Enter Passwords from the iSeries

- ▶ Log on with QSECOFR or equivalent authority (*ALLOBJ, *IOSYSCFG, *SAVSYS, *JOBCTL, and *SECADM authorities are needed).
- ▶ To add the Warehouse Manager Server library to your library list, type the command ADDLIBLE SCSEVER, where SCSEVER is the name of your Warehouse Manager Server library.
- ▶ Type the command CHGSCAUT, and press Enter.
- ▶ Enter the values for each password (password, number of users, expiration date). The product name is not specified because it is stored with the password. Thus, when you enter the password, you are specifying the product name.
- ▶ Repeat the previous step for each password you received.

To Enter Passwords from Warehouse Manager Client

- ▶ Open Warehouse Manager Client.
- ▶ Click the data source to which you want to connect.
- ▶ On the File menu, click Connect.
- ▶ Connect to your iSeries (AS/400) with QSECOFR or equivalent authority (*ALLOBJ, *IOSYSCFG, *SAVSYS, *JOBCTL, and *SECADM special authorities are needed).

- ▶ Double-click the data source to list the data types (libraries, profiles, and applications.)
- ▶ Double-click Applications to display a list of licensed products for Warehouse Manager Server.
- ▶ Click the product (for example, Warehouse Builder, Query, Analyzer, Analyzer for the Web) to which you want to add a license.
- ▶ From the Manage menu, choose:
 - Passwords
 - Add Password
- ▶ Enter the values for the password (password, number of users, expiration date).
- ▶ Click Update.

Repeat these steps for each password that you received.

For more information about licensing, see “Managing Per-Seat Licenses” on p. 30.

Using Essbase/400 Server Passwords

The Essbase/400 password is the iSeries (AS/400) product serial number, and it is valid only for a single installation of the Essbase/400 Server. The serial number allows a defined number of first-come, first-served connections to the Essbase/400 Server from Essbase/400-compliant software (for example, Analyzer, Warehouse Builder, Microsoft Excel, Lotus 1-2-3, Essbase/400 Application Manager).

When you install the latest version of Essbase/400 into an existing STRATEGY Essbase/400 library, you must enter the product serial number (or specify *DEFER).

If you specify *DEFER, you can enter the product serial number after installation by running the iSeries Essbase/400 CHGESSENV command. You must enter this number before Essbase/400 will allow connections to the server.

There are two types of product serial numbers, temporary and permanent, which are discussed in the following two sections.

Temporary Product Serial Numbers

Temporary product serial numbers expire on a specific date.

Permanent Product Serial Numbers

Permanent product serial numbers never expire. However, you must have a new product serial number if you upgrade to a different iSeries model or serial number.

To enter the product serial number (if you did not enter it during installation):

- ▶ Log off the iSeries and log on with QSECOFR or equivalent authority (*ALLOBJ, *IOSYSCFG, *SAVSYS, *JOBCTL, and *SECADM authorities are needed).
- ▶ To add the Essbase/400 library to your library list, type the command ADDLIBLE ESSBASE, where ESSBASE is the name of your Essbase/400 library.
- ▶ Type the command CHGESSENV, and press F4.
- ▶ Enter the value for the serial number. Leave the value as it is (*SAME) for the other options.

Managing Per-Seat Licenses

This section applies to per-seat licensing of Warehouse Manager Server and the PC products Warehouse Manager Client, Query, and Report Writer.

Transferring or Removing a PC License

Transferring or removing a PC license applies to STRATEGY per-seat licenses. You need to transfer or remove a license only when the PC no longer needs the license. Use Warehouse Manager Client to view the available licenses and remove them.

To transfer or remove a license:

- ▶ Open Warehouse Manager Client, and connect to a data source.
- ▶ Double-click Applications to list the available applications for the data source.
- ▶ Click the desired application.
- ▶ From the Manage menu, choose Per-Seat Licenses to display PCs licensed to the application.

For each PC, the user who most recently connected to the application using that PC and the date/time of the connection is displayed.

Note: If the command is not available to you, highlight it, and press F1 for an explanation.

- ▶ Click the PCs that you no longer want licensed to the selected application.
- ▶ From the License menu, choose Remove. You will be asked to confirm that you want to delete the selected PC names and their licenses.

Important: When you remove a license, the PC can no longer connect to Warehouse Manager Server until the PC software is reinstalled.

Reinstalling STRATEGY PC Software

If a PC license is removed using Warehouse Manager Client, you must reinstall the PC software to get a new license. The original PC name will appear as the default name if STRATEGY is reinstalled, but you can change it.

Installing Server Software

This chapter covers the STRATEGY server installation including Warehouse Manager Server and Essbase/400 Server.

Before You Install

- Refer to the *STRATEGY 4.5 Upgrade Guide* at <http://support.spss.com/upgradeinfo/>.
- Always save server information with the SAVSRVRINF command before you install over STRATEGY 3.0 or later. For more information, see Chapter 5 of the *STRATEGY Administrator's Guide*.
- Read Chapter 3 for all prerequisites. If you are installing on a system with double-byte character set (DBCS) support, see “Installing and Running on a Double-Byte System” on p. 44.
- When you install STRATEGY, the installation selects a TCP/IP port number for you. If you want to select your own port number, use the WRKSRVTBLE command before installation to find an available number.
- *Important:* If you are using Enterprise Reporting, you must migrate your 3.0, 3.5, 4.0, or 4.1 Information Directory objects and documents to the new Web deployment framework. You will have the option to migrate during installation, or you can choose to migrate later. For information, see the *Enterprise Reporting Administrator's Guide* at <http://support.spss.com>. After installation, you can find the guide on the Documentation page by following the steps below:
 - ▶ From the Windows Start menu, choose:
 - Programs
 - ShowCase STRATEGY 4.5
 - Documentation

Beginning Server Installation

- ▶ Save your current server information with the SAVSRVRINF command. For more information, see the *STRATEGY Administrator's Guide*.
- ▶ Load the STRATEGY iSeries (AS/400) CD into the iSeries CD drive.
- ▶ Log on with QSECOFR or equivalent authority (*ALLOBJ, *IOSYSCFG, *SAVSYS, *JOBCTL, and *SECADM special authorities are needed). **The profile that you use must be a permanent profile that does not belong to any groups or supplemental groups.** If it is removed from the system, you may have to reinstall the server.
- ▶ Type LODRUN and press F4.
- ▶ You will be prompted for a device name. Choose *OPT or the name of your optical device.
- ▶ You will be prompted for a path name. Accept the default path.
- ▶ Follow the screen instructions and use this chapter to complete the installation.

Initial Installation Options

The options that you choose from the initial installation screens determine the screens, options, and order of your installation. Each heading in the following sections matches a screen in the server installation.

The installation displays recommended values for the options. If you are upgrading STRATEGY server software, existing values are retrieved.

STRATEGY Servers

Choose the STRATEGY server(s) to install:

Warehouse Manager Server. This server supports Query, Report Writer, Warehouse Builder, Warehouse Manager Client, Analyzer, Analyzer for the Web, and Enterprise Reporting.

Essbase/400 Server. This server supports Analyzer, Analyzer for the Web, Essbase/400 Application Manager, Microsoft Excel and Lotus 1-2-3 Essbase/400 add-ins, and other Essbase/400-compliant PC software.

Note: You cannot install Warehouse Manager Server and Essbase/400 Server into the same server library.

Table 5-1 lists the STRATEGY software and the server with which it communicates.

Table 5-1
STRATEGY PC Software

PC Software	Purpose	Server*
Analyzer	Data analysis	ESS, WM
Analyzer for the Web	Data analysis via an intranet or extranet	ESS, WM
Query	Relational and multidimensional database query tool	WM, ESS
Report Writer	Relational and multidimensional database report writer	WM, ESS
Enterprise Server	Enterprise reporting	WM
Warehouse Builder	Data cleansing, transformation, and distribution	WM, ESS
Warehouse Manager Client	Database administration	WM
Essbase/400 Application Manager	Multidimensional database administration	ESS
Essbase/400 Excel add-ins	Data analysis	ESS
Essbase/400 Lotus 1-2-3 Millennium add-ins	Data analysis	ESS

*WM refers to Warehouse Manager Server. ESS refers to Essbase/400 Server.

National Language Support

Specify the primary and secondary languages for the STRATEGY products. Choose ENU for English lowercase or ENP for English uppercase. STRATEGY commands use the primary language.

If you are installing Warehouse Manager Server, continue with the next section. Otherwise, skip to “Essbase/400 Installation Options” on p. 41.

Warehouse Manager Server Installation Options

This section describes the Warehouse Manager Server installation. Each heading matches a screen in the installation. For the Essbase/400 Server installation, see “Essbase/400 Installation Options” on p. 41.

Warehouse Manager Server Library

Specify the library in which to install Warehouse Manager Server. The screen displays current Warehouse Manager Server libraries. Choose a library to upgrade, or press F6 to install a new library.

The default library name is SCSEVER. In addition, the root Integrated File System (IFS) path used for the installation is based on the specified library name (the default is /SCSEVER).

Auxiliary Storage Pool (ASP) ID. If you add a library, you are prompted to enter the ASP ID. Accept the default or enter the number of the ASP from which the system should allocate storage for the Warehouse Manager Server library. (IFS information installed with Warehouse Manager Server is always placed in the system ASP.)

To Change the Library After Installation

To change the library, you must reinstall it. Before you install a new library, save the catalog files from the old library using the SAVSRVRINF command and restore into the new library using the RSTSRVRINF command. For more information, see the *STRATEGY Administrator's Guide*.

STRATEGY Interlink for J.D. Edwards

Choose this option to enable STRATEGY Interlink for J.D. Edwards. For details, see the *STRATEGY Administrator's Guide*.

To Enable STRATEGY Interlink for J.D. Edwards After Installation

If you installed *without* STRATEGY Interlink for J.D. Edwards, you must install the product passwords for STRATEGY Interlink for J.D. Edwards support. Enter the passwords in Warehouse Manager Client or with the iSeries (AS/400) command CHGSCAUT. For instructions, see “Entering Passwords” on p. 28 in Chapter 4.

Warehouse Manager TCP/IP Port Configuration

TCP/IP communications runs STRATEGY and Essbase/400 client applications, and the installation requires a valid TCP/IP port number. Previously, the Warehouse Manager Server and the Analyzer OLAP Server (AOS) used two separate ports. With the release of STRATEGY 4.0, the AOS was incorporated into the Warehouse Manager Server, but you have the option to keep both ports. If you currently have two ports, see “Should I Use One or Two Ports?” below.

If you are installing over STRATEGY 4.x and you currently have only one port, accept the default port number (43419 or the next available number) or enter a port number in the range of 6000–65535, using the iSeries command WRKSRVTBLE to find available port numbers.

Note: Record your TCP/IP port number. You will need it when installing the client software.

Should I Use One or Two Ports?

In STRATEGY versions prior to 4.0, the AOS and Warehouse Manager Server (SCSERVER) used two separate ports. However, with versions 4.0 and later, the AOS port is incorporated into the Warehouse Manager Server port. If you are upgrading to version 4.5 and use Analyzer, you can retain both ports. However, future STRATEGY releases will support only one port.

If you choose to use only the Warehouse Manager Server port and wish to save data to the ShowCase Server, you must later configure your AOS connections on each PC to use the Warehouse Manager Server port number. Use port numbers greater than 6000.

To change the AOS port number:

- ▶ Open Query.
- ▶ From the Tools menu, choose ShowCase Servers.
- ▶ Choose your server, and click the Edit the Server Properties tool.
- ▶ In the Edit ShowCase Server dialog box, change the port number to match the Warehouse Manager Server port number that you chose at installation.

In Analyzer, change the port number in the OLAP Connection dialog box.

To Change the TCP/IP Port Number After Installation

Note: The CHGSCSVRA command will stop the server, disconnect all current users, and stop current jobs. It will also start the server after changes have been made.

- ▶ Add the server library name to your library list.
- ▶ Type WRKSRVTBLE to determine if the port that you want to use is available.
- ▶ Type CHGSCSVRA, and add the new port number, subsystem, and library.

Note: If you retain both ports from a STRATEGY 3.x or 4.x release, you can configure the second port with the CHGSCSVRA parameter SecondaryTCPIPPort. For more information on CHGSCSVRA settings for Analyzer functionality, see Appendix A in the *STRATEGY Administrator's Guide*.

Work Management and CCSID Configuration

Specify the following options for Warehouse Manager Server. If you will not use Analyzer-related applications, accept the defaults for the Analyzer OLAP options.

Relational Subsystem and Library. Warehouse Manager TCP/IP jobs will run in the relational subsystem. Your current subsystem, as determined by the QCTLSBSD system value, is displayed and should not be changed.

Note: If the controlling subsystem is QBASE, then QBASE is the default. If the controlling subsystem is QCTL, then QCMN is the default. To find the controlling subsystem, type DSPSYSVAL SYSVAL(QCTLSBSD).

The subsystem description resides in the specified library. QSYS is the default.

AO Server CCSID (EBCDIC). Warehouse Manager Server uses the Analyzer OLAP Server (AO) Extended Binary Coded Decimal Interchange Code (EBCDIC) coded-character set identifier (CCSID) to represent character data when interacting with Essbase/400, DB2/400, and OS/400. The recommended EBCDIC CCSID value for your system is displayed.

The EBCDIC CCSID must be the same for each Essbase/400 server that Analyzer and Analyzer for the Web users access. Also, you can specify only one EBCDIC CCSID for each Warehouse Manager installation library. For CCSID pairs, see Table 5-2.

AO Client CCSID (ASCII). Warehouse Manager Server uses the AO Client ASCII CCSID for PC-based operations. It is used during startup time, before the client CCSID is determined, and it supports translation to and from the EBCDIC CCSID. This does not affect what code page or encoding Windows and Web clients are able to run. Warehouse Manager Server supports multiple Windows and Web clients on any code page or encoding that supports translation to the EBCDIC CCSID.

The installation calculates this value based on the EBCDIC CCSID value. For example, if the EBCDIC CCSID is 37, the matching ASCII CCSID is 1252, which supports Western European languages (English, French, German, Italian). To find valid CCSID pairs, see Table 5-2.

To Change CCSIDs After Installation

To change the server CCSID, reinstall Warehouse Manager Server. To change the client CCSID, see the *STRATEGY Administrator's Guide*.

CCSID Pairs

The following EBCDIC and ASCII CCSID pairs are recommended for Warehouse Manager Server and Essbase/400 Server. For details on Essbase/400 CCSIDs, see “Essbase/400 Server” on p. 41.

Table 5-2

Recommended Warehouse Manager Server and Essbase/400 EBCDIC and ASCII CCSID Pairs

Country, Geographic Region, or Language Group	EBCDIC CCSID	Matching ASCII CCSID
United States/Canada/Brazil	37, 1140	1252
Multi-national #1	256	1252
Germany/Austria	273, 1141	1252
Denmark/Norway	277, 1142	1252
Finland/Sweden	278, 1143	1252
Italy	280, 1144	1252
Spain/Latin America	284, 1145	1252
United Kingdom	285, 1146	1252
France	297, 1147	1252
Greece	423, 875	1253
Multi-national #5	500, 1148	1252
Korea (single-byte)	833	1040, 1088
Korea (double-byte)	933	944, 949
Chinese Simplified (single-byte)	836	1115
Chinese Simplified (double-byte)	935	1381
Chinese Traditional (double-byte)	937	938

Country, Geographic Region, or Language Group	EBCDIC CCSID	Matching ASCII CCSID
Chinese Traditional (single-byte)	37, 28709	904
Japan (double-byte)	939, 5035	932, 943
Japan (single-byte)	1027	932
Thailand	838, 9030	874
Central Europe (Bosnia, Croatia, Czech Republic, Hungary, etc.)	870	1250
Iceland	871, 1149	1252
Cyrillic Multinational	880, 1025	1251
Baltics	1112, 1122	1250
Hebrew	62235	1255
Arabic (Essbase only; not yet supported in Analyzer.)	62224	1256

Orion Application Server

If you are a new or current Enterprise Reporting user, *or* if you will save, share, and manage query and report definitions via the ShowCase Server, you must install the Orion Application Server. To install the Orion server, enter Y. If you are not installing Enterprise Reporting, enter N. You can also enter N and install the server later with the INSTORI command. If you entered Y to install Orion, you will be prompted to enter the Orion Install Key. If you do not have a key, follow the instructions on the installation screen to obtain one.

If you are a current Enterprise Reporting user, you must also migrate your 3.0, 3.5, 4.0, or 4.1 Information Directory objects and documents to the new Web deployment framework. When you install the Orion server, you have the option to migrate immediately after installation or defer until later. For information, see the *Enterprise Reporting Administrator's Guide* at <http://support.spss.com>. After installation, you can find the guide on the Documentation page:

- From the Windows Start menu, choose:

- Programs
 - ShowCase STRATEGY 4.5
 - Documentation

Enterprise Reporting Configuration

If you are installing the Orion server, enter the following information.

Orion Server Port. The Orion server requires a port number different from the Warehouse Manager Server port number. Accept the default port number (48671 or the next available number) or enter a port number in the range of 6000–65535. To see what port numbers are already in use, run the WRKSRVTBLE command from an iSeries command line.

Note: Remember this port number. You will use it to set up Enterprise Reporting.

JMS Server Port. This port is required by the Orion server. Accept the default (45577 or the next available number) or enter a port number in the range of 6000–65535.

User Profile and Password. Enter an existing user profile with *ALLOBJ and *SECADM authorities and a password to be stored and used for Enterprise Reporting security.

Subsystem and Library. Your current subsystem, as determined by the QCTLSBSD system value, is displayed and should not be changed.

Note: If the controlling subsystem is QBASE, then QBASE is the default. If the controlling subsystem is QCTL, then QCMN is the default. To find the controlling subsystem, type DSPSYSVAL SYSVAL(QCTLSBSD). The subsystem description resides in the specified library. QSYS is the default.

Note: To set up Enterprise Reporting, see the *Enterprise Reporting Administrator's Guide* at <http://support.spss.com>. After installation, you can find the guide on the Documentation page.

- ▶ From the Windows Start menu, choose:

- Programs
 - ShowCase STRATEGY 4.5
 - Documentation

Enterprise Reporting Migration

If you are installing over a previous release in which you used Enterprise Reporting *and* you are installing the Orion server, you must migrate your data.

If you enter *IMMED, the date parameter will be ignored and the migration will begin immediately after installation. If you enter a time and date, the migration will begin at the time and date you specify. You may enter *DEFER to postpone the migration and run it manually later. For more information, see the *Enterprise Reporting Administrator's Guide* at <http://support.spss.com>.

Schedule JAR File Compile

To reduce server start-up time, the *.jar* files installed in your Integrated File System (IFS) must be compiled before you start the server. Because the compile may affect system performance, you can compile immediately after installation or enter a date and time to compile.

If you enter *IMMED, the date parameter will be ignored and the *.jar* files will compile immediately after installation. If you enter a time and date, the files will compile at the time and date you specify.

Important: If you are migrating Enterprise Reporting objects, we recommend scheduling the *.jar* files to compile after the migration. For best performance, choose *DEFER now and use the CMPSCJAR command to compile the *.jar* files after migration. Or schedule the compile during off-peak hours after migration. Compile time may vary from three to four hours or more depending on system resources and will be shorter if the Warehouse Manager Server is not running.

To Compile JAR Files After Installation

At an iSeries command line, run the CMPSCJAR command. You should also run the command after you apply PTFs to the Java Toolbox.

Security Settings

Specify whether your Warehouse Manager users will have access to all libraries (*ALL) on the iSeries or only libraries and files in their library list (*LIBL). This setting applies only to STRATEGY applications using Warehouse Manager Server.

To Change Security Settings After Installation

- ▶ Open Warehouse Manager Client.

- ▶ From the menus, choose:

- Manage
 - Server Options
 - Security

You can also use the iSeries commands SETLIBACC and CHGSRVRDFT, located in the Warehouse Manager Server library. SETLIBACC determines library access. CHGSRVRDFT defines default server security options. To run these commands, first add the Warehouse Manager Server library (for example, SCSERVER) to your library list.

Storage CCSID Configuration

The storage CCSID value specifies the coded character set identifier that stores library, file, and column alias names. It also stores data views, Warehouse Builder distribution sets and definitions, and shared query information.

This value must be a STRATEGY-supported, single-byte EBCDIC CCSID. Enter your five-digit CCSID value, or use *CALC or *HEX to let the installation calculate it based on your iSeries (AS/400) system settings. Table 5-3 shows the EBCDIC CCSIDs supported for the Warehouse Manager storage CCSID value.

Important: If you are using Enterprise Reporting, you must use a valid, specific storage CCSID. Do not use a storage CCSID of 65535 or *HEX. If you are installing on a double-byte system, use 65535 (*HEX). See “Installing and Running on a Double-Byte System” on p. 44.

Table 5-3
Supported Warehouse Manager Storage EBCDIC CCSIDs

Country, Geographic Region, or Language Group	EBCDIC CCSID
United States/Canada/Brazil	37
Multi-national #1	256
Germany/Austria	273
Denmark/Norway	277
Finland/Sweden	278
Italy	280
Spain/Latin America	284
United Kingdom	285
France	297
Greece	423, 875
Hebrew	62235
Multi-national #5	500
Korea	833
Chinese Simplified	836
Chinese Traditional	37, 28709
Thailand	838
Central Europe (Bosnia, Croatia, Czech Republic, Hungary, etc.)	870
Iceland	871
Cyrillic Multinational	880, 1025
Japan	1027
Iran	1097
Hexadecimal (*HEX)	65535

Note: For general information about iSeries CCSIDs, including complete language and country settings, see the IBM AS/400 National Language Support manual.

To Change Storage CCSIDs After Installation

Reinstall Warehouse Manager Server and specify a different CCSID.

Warehouse Builder Configuration

Warehouse Builder Subsystem and Library. Warehouse Builder distribution jobs run in the Warehouse Builder Subsystem. Your current subsystem, as determined by the QCTLSBSD system value, is displayed and should not be changed. You should use the same subsystem as your TCP/IP subsystem.

Note: If the controlling subsystem is QBASE, then QBASE is the default. If the controlling subsystem is QCTL, then QCMN is the default. To find the controlling subsystem, type DSPSYSVAL SYSVAL(QCTLSBSD). The current subsystem description resides in the specified library.

Sample Database

The STRATEGY sample database, SCSAMPLE45, will be installed in the SCSAMPLE45 library. You will use this database in the STRATEGY tutorials. For more information about the database, see Appendix B in the *STRATEGY Administrator's Guide*.

To Reinstall the Sample Database After Installation

You can install or reinstall the sample database with the RSTSMPLB command.

Finalizing Warehouse Manager Server Installation Options

At this point, you have finished setting Warehouse Manager Server installation options. If you chose to install Essbase/400, the installation options will follow. If not, the Warehouse Manager installation will begin.

Essbase/400 Installation Options

STRATEGY 4.5 supports Hyperion Essbase 6.1 features and functions. If you chose to install the Essbase/400 Server, this section describes the Essbase/400 Server installation. The recommended values are displayed; change options as required.

Essbase/400 Server Library

Specify the library in which to install Essbase/400. The screen displays current Essbase/400 libraries. Choose a library to upgrade, or press F6 to install a new library. The library you select to upgrade cannot be running.

The default library name is ESSBASE. In addition, the root Integrated File System (IFS) path used for the installation is based on the specified library name (the default is /ESSBASE).

Auxiliary Storage Pool ID. If you add a library, you are prompted to enter the ASP ID. Accept the default or enter the number of the ASP from which the system should allocate storage for the Essbase/400 installation library. IFS information installed with Essbase/400 is placed in the ASP.

Essbase/400 Server

Product Serial Number. Enter the serial number to license this copy of Essbase/400. Each serial number is unique to one iSeries (AS/400) because it uses the iSeries serial number to validate the Essbase license. Essbase/400 will not run if it is installed on an iSeries other than the one for which the serial number was issued. If you are licensed to install multiple copies of the Essbase/400 Server, you should have a unique serial number for each installation. Two servers installed on the same iSeries cannot use the same serial number.

If you do not know your serial number, enter *DEFER. However, before trying to use the Essbase/400 Server, you must specify a serial number with the CHGESSENV command. For more information, see Chapter 4.

EBCDIC CCSID. Essbase/400 uses the EBCDIC CCSID to represent character data when interacting with DB2/400 and OS/400. The recommended EBCDIC CCSID value for your system is displayed. Essbase/400 converts all character data to the EBCDIC CCSID when:

- Using an Essbase/400 OS/400 interface or command (these interfaces include the Essbase/400 Server, ESSCMD command interface, MaxL command interface, and Warehouse Builder run-time interfaces)
- Loading data using SQL and referencing iSeries physical or logical files
- Writing messages to the OS/400 job log

You can specify only one EBCDIC CCSID for each Essbase/400 Server. The Essbase/400 Server supports single-byte and double-byte CCSIDs. If your environment requires double-byte character support, see “Installing and Running on a Double-Byte System” on p. 44.

If you installed Warehouse Manager Server, the EBCDIC CCSID for Warehouse Manager Server must be the same as the EBCDIC CCSID for all of the Essbase/400 servers it uses. Multiple Essbase/400 servers must all use the same EBCDIC CCSID if they are accessed through the same Warehouse Manager Server.

ASCII CCSID. The Essbase/400 Server uses the ASCII CCSID to represent character data when interacting with Essbase/400 client software (for example, Analyzer, Excel add-ins). The recommended ASCII CCSID value for your system is displayed.

The installation calculates this value based on the EBCDIC CCSID value. For example, if the EBCDIC CCSID is 37, the matching ASCII CCSID is 1252, which supports Western European languages (English, French, German, Italian). For the recommended EBCDIC and ASCII CCSID pairs, see Table 5-2 on p. 36.

You can specify only one ASCII CCSID for each Essbase/400 server. Therefore, all PC clients that access the Essbase/400 Server must use the same ASCII CCSID. The ASCII CCSID should be supported by Windows (ANSI code). If you do not use an ANSI-equivalent CCSID, characters sent from the Essbase/400 Server may appear incorrectly.

Essbase/400 converts all character data to the ASCII CCSID when:

- Communicating with a PC client (for example, Analyzer, Excel add-ins)
- Saving and loading Essbase/400 outlines (.otl), load and build rule files (.rul), and calculation script files (.csc) to the Integrated File System (IFS)

Note: For general information about iSeries CCSIDs, including complete language/country settings, see the IBM AS/400 National Language Support manual.

Server Threads. Enter the maximum number of server threads that can be created by Essbase/400 when an application is started. The default is 5. This value should be the average number of concurrent report requests expected for each application.

IP Address. Enter the IP address that Essbase/400 Server should use to listen for incoming client requests. You must enter a value for this option. If you do not know the value, enter *DEFER.

However, before using Essbase/400, you must specify an IP address using the CHGESSENV command. The value must be unique for each Essbase/400 library.

Notes:

- If you are installing over an existing library, the current IP address is displayed.
- To display the IP addresses configured on your iSeries (AS/400), enter the command CFGTCP and choose option 1.
- Enter *ALL if you have only one Essbase/400 library and it listens for incoming client TCP/IP requests using all IP interfaces configured on the iSeries. When your iSeries is configured with multiple TCP/IP interfaces connected to different IP subnetworks, specifying *ALL prevents you from running multiple copies of Essbase/400 on a single iSeries.

To Change the Essbase/400 Options After Installation

To Change the Product Serial Number: Use the CHGESSENV command.

To Change CCSID Values: See the *STRATEGY Administrator's Guide*.

To Change Server Threads: Use the CHGESSENV command.

To Change the IP Address: Use the CHGESSENV command. The value must be unique for each Essbase/400 library.

Starting Essbase

If you did not provide a serial number or IP address, you will not see this screen. Enter Y if:

- You are installing Essbase/400 in a new library
- You want to initialize the Essbase/400 security file
- You did not choose *DEFER for the product serial number and IP address.

Note: The only time the Essbase/400 Server is started *automatically* is if you choose Y at this prompt.

Enter and remember the following security information:

Company Name. Enter the name of your company. This information will be displayed in the registration message when you start Essbase. The name must be at least three letters long.

User ID. Enter the Essbase administrator's user ID, which is needed for security administration and ending the server. This ID is not the OS/400 user ID. The Essbase user ID must be at least three characters long. Write down your user ID.

Password. Enter the password for the Essbase administrator's user ID. The password must be at least six characters long and different from the user ID. Write down your password.

To Start Essbase After Installation

For more information, see the *STRATEGY Administrator's Guide*.

Finalizing Essbase/400 Server Installation Options

You have finished setting Essbase/400 installation options. If you deferred any options, configure them later with the CHGESSENV command. To start installation, press Enter.

Installing and Running on a Double-Byte System

This section applies to countries using a double-byte character set (DBCS) to represent character data (for example, Japan).

Using the Correct CCSID

If you are installing STRATEGY on a system with DBCS support, use a CCSID that supports lowercase English characters or 65535 (*HEX). If you set the CCSID value to 65535, the iSeries chooses a default CCSID for the job based on the job's language identifier. However, make sure that the default CCSID supports lowercase English characters (ENU).

For example, if the job CCSID is 65535 (*HEX) with a language identifier of JPN, 5026 becomes the default CCSID. But for Essbase/400, 5026 does not support standard lowercase English characters and is not supported for Essbase/400 installation or operation.

If you must run an Essbase job under a *HEX CCSID, change the job's language ID so that 5026 isn't the default CCSID. For example, using ENP (English uppercase) will calculate a default CCSID of 37.

Using the Correct EBCDIC CCSID

The CCSID of the iSeries job running the Essbase/400 Server or command interface must be the same as the Essbase/400 EBCDIC CCSID or 65535 (*HEX). Otherwise, you may get unpredictable results.

Any job that performs Essbase/400 operations (for example, starts the server, ESSCMD, MaxL, Warehouse Builder) must also use the same EBCDIC CCSID that Essbase/400 uses or 65535 (*HEX).

Use 65535 only when data stored in DB2/400 tables for dimension building or data loading have the wrong CCSID for the data stored in them.

When using 65535 for the Essbase/400 Server job CCSID, the data contained in the DB2 files must use the server EBCDIC CCSID. For more information, see the *STRATEGY Administrator's Guide*.

To change CCSIDs after Essbase/400 is installed, see the *STRATEGY Administrator's Guide*.

Changing CCSIDs for Profiles and Jobs

The CCSID can be changed once for each OS/400 user by changing the OS/400 user profile or by changing the current job each time a user signs on.

To Change the CCSID for a User Profile

If you have *SECOFR authority, use the following command. The *ccsidvalue* should be a CCSID that supports lowercase English characters or 65535 (*HEX).

```
CHGUSRPRF USRPRF(userid) CCSID(ccsidvalue)
```

After the command is run, the user specified by *userid* should sign off the system and back on.

To Change the CCSID for a Job

Use the following command each time that you sign on to the system.

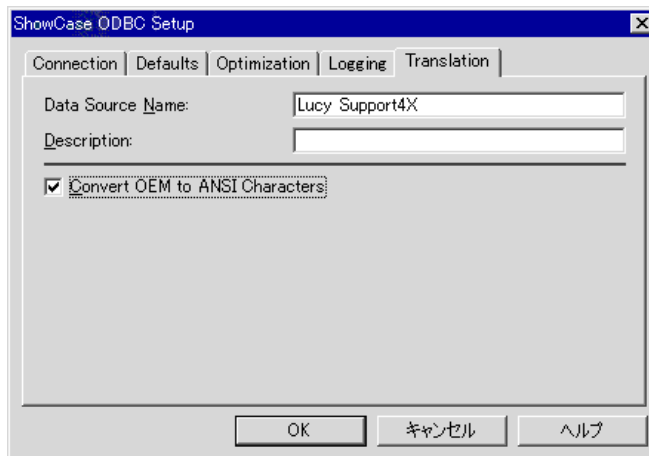
```
CHGJOB JOB(*) CCSID(ccsidvalue)
```

Setting Up Your PC for Double-Byte Character Data

If you are using a double-byte character set (DBCS) to represent character data (for example, Japanese or Chinese), use the following steps to set up your PCs:

- ▶ Install Client Access version V4R5 or later from your iSeries. The path is:
/qibm/ProdData/CA400/Express/Install/Image
- ▶ Install STRATEGY as described in this chapter and Chapter 6.
- ▶ Configure a data source as described in Chapter 8.
- ▶ To open the AS/400 Test Connection, from the Windows Start menu, choose:
Programs
 ShowCase STRATEGY 4.5
 AS/400 Test Connection
- ▶ Highlight your data source, and click Setup.
This opens the ShowCase ODBC Setup dialog box.
- ▶ Click the Translation tab, and select Convert OEM to ANSI Characters, as shown in Figure 5-1.

Figure 5-1
Convert OEM to ANSI characters



- ▶ Click OK.

- ▶ Click Global Settings.

This opens the Settings dialog box.

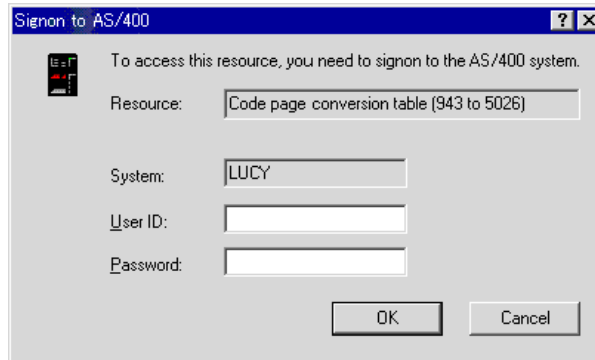
- ▶ Click the Double Byte tab, and choose the correct translation for your data, as shown in Figure 5-2.

Figure 5-2
Choosing the correct translation



- ▶ When you open STRATEGY for the first time, you will be prompted to log on to the iSeries with Client Access to load EBCDIC to ASCII translation tables. See Figure 5-3.

Figure 5-3
Sign on to load translation tables



After this initial connection, the tables will exist on your PC.

Installing and Uninstalling PC Software

Before You Begin

- If you are upgrading to STRATEGY 4.5, read the *STRATEGY 4.5 Upgrade Guide* at <http://support.spss.com/upgradeinfo/>.
- The STRATEGY setup will allow you to automatically uninstall versions of STRATEGY 3.0 and later. If the STRATEGY setup detects a previous installation, you will be asked if you want the previous version removed. The STRATEGY setup will display the older products and installation path as defaults. If you choose not to remove the previous version, you must choose an installation folder other than the existing path.

Note: A 4.5 silent installation will automatically uninstall versions 3.0 and later.

- If you have versions of STRATEGY prior to 3.0, you must uninstall the client applications manually. Installing STRATEGY 4.5 into the same folder as a 2.x installation will not fully replace the previous version. See the *STRATEGY 4.5 Upgrade Guide* at <http://support.spss.com/upgradeinfo/>.
- Before installing PC software, the server software must be installed and running. See Chapter 5.
- Each PC that installs STRATEGY must have a different name. For PC naming guidelines, see “Transferring or Removing a PC License” on p. 30 in Chapter 4.

Enterprise Server Considerations

Any PC with the Enterprise Server installed must also have Query and Report Writer installed to run scheduled and dynamic reports.

The Enterprise Server has the following restrictions:

- It must be installed on computers running Windows NT 4.0, Windows 2000, or Windows XP.
- The network workstation installation option is not available.

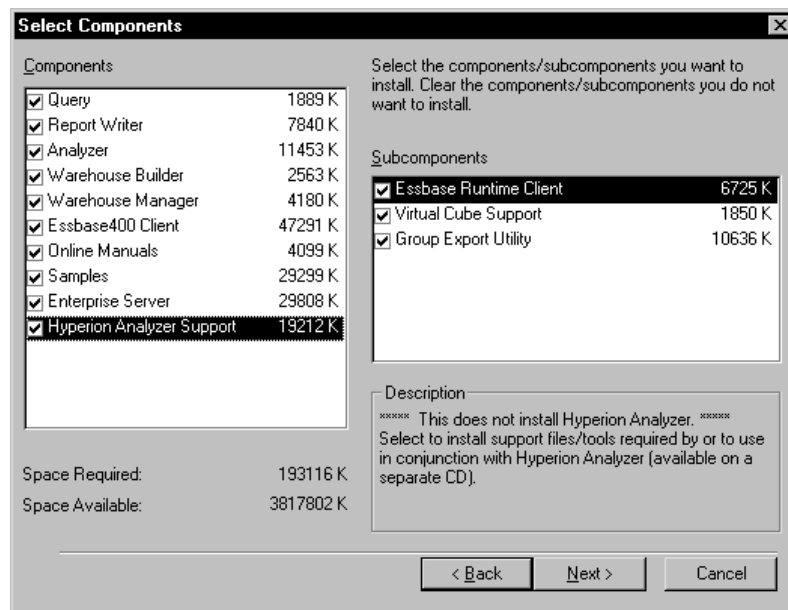
Hyperion Analyzer Considerations

STRATEGY Analyzer is based on Hyperion Analyzer 4.0. If you use Hyperion Analyzer 5.0 and want to access relational data in Hyperion Analyzer or export groups from STRATEGY Analyzer to Hyperion Analyzer, you will need the Virtual Cube support and the Group Export tool. You can install them from the STRATEGY CD.

To install Hyperion Analyzer Support:

- ▶ From the STRATEGY CD, start the client installation.
- ▶ In the Components list, select Hyperion Analyzer Support, as shown in Figure 6-1.
- ▶ In the Subcomponents list, select Essbase Runtime Client. Support for Virtual Cubes and the Group Export tool is optional, and you may choose to deselect these options.

Figure 6-1
Hyperion Analyzer Support



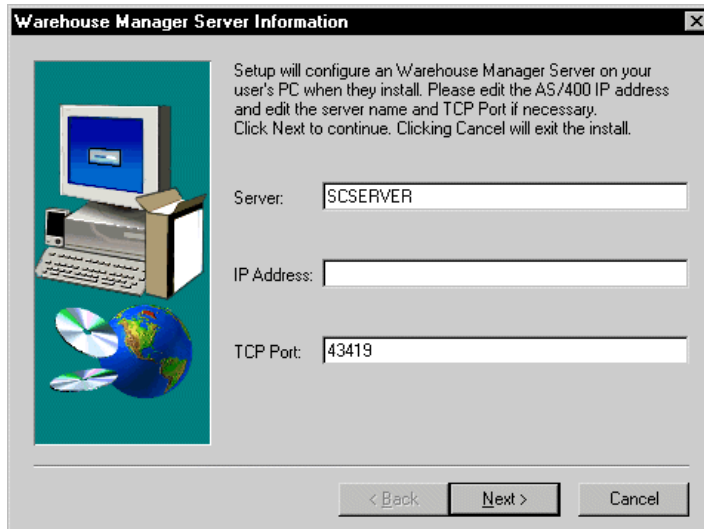
Network Installation Considerations for Analyzer Users

Providing Server Information

If you perform a network installation to allow users to run setups from the network location, you will be asked to provide information for Warehouse Manager Server. This information will be entered in the users' registries when they install Analyzer products, allowing them to automatically connect to Warehouse Manager Server. You may skip this information when you install, but you must enter it the first time that you connect to Warehouse Manager Server from Analyzer or

Analyzer for the Web. If you do not use Analyzer products, you can skip this screen by clicking Next. See Figure 6-2.

Figure 6-2
Entering Warehouse Manager Server information during network installation



Server name. Represents Warehouse Manager Server in the Server dialog box when Analyzer is first started. The default name is SCSERVER. Enter your custom information below.

My server name: _____

iSeries (AS/400) IP Address. IP number of the iSeries where Warehouse Manager Server is installed. Enter your custom information below.

My iSeries (AS/400) IP address: _____

TCP Port. Port number specified during the installation of Warehouse Manager Server on the iSeries. Enter your custom information below.

My TCP port: _____

Granting Write Authority to the Network Directory

If you install Analyzer to a network directory so users can perform workstation installations, you must also grant users write authority to the network directory. Users must have write access to the network directory to save slides or slide shows stored in the *SSHOW* network directory.

If you do not want your users to have write access to the network directory, use the following procedure to enable users who perform workstation installations to store slides and slide shows on their local hard drives:

- ▶ Create a directory called *SSHOW* on the local hard drive.
- ▶ From the Windows Start menu, choose Run.

- ▶ Type REGEDIT and locate
`HKEY_CURRENT_USER\SOFTWARE\SHOWCASE\ANALYZER\SETTINGS\SLIDESHOWPATH`.
- ▶ Right click (Default), and click Modify.
- ▶ In the Value Data dialog box, change the path to point to the *SSHOW* directory created in the first step—for example, `C:\PROGRAM FILES\SHOWCASE STRATEGY\SSHOW`.
- ▶ Click OK.

Analyzer for the Web Considerations

Users don't have to install Analyzer for the Web software if they have TCP/IP configured and a supported Web browser on their PCs. After installing and configuring the server, instruct users to point their browser to the designated Web page (IP address or URL). The Java applet will run automatically.

Essbase Client Considerations

When you install Essbase/400 components, the files are installed in the *STRATEGY* folder (for example, `ShowCase STRATEGY\bin`) and the environment settings are updated to point to that folder. After installation, you can uninstall any previous Essbase folders.

SQL Drill-Through

After you install STRATEGY, you can install SQL Drill-Through. On the STRATEGY CD, go to the `\SqlDrill` folder, and run *Setup.exe*.

Running Installation Multiple Times

If you run the installation at different times to install different STRATEGY components, it will use the same folder in which STRATEGY was first installed. This will log installed software for easy uninstallation.

Accessing the STRATEGY CD via a Network

Important: When you access the STRATEGY CD via a network, **map a drive to the CD** rather than accessing it via Network Neighborhood. Network Neighborhood uses the Universal Naming Convention, which may occasionally cause path errors in various products, including Adobe Acrobat.

Installing STRATEGY to PCs

There are three ways to deploy STRATEGY. Choose the best method for your situation. Step-by-step instructions are in the following sections.

Important: Do not use the Microsoft Add/Remove Programs application to initiate the STRATEGY installation.

CD installation. Installs STRATEGY from the CD to user PCs. If STRATEGY users don't have CD-ROM access, you can copy the contents of the CD to a network drive and have users install it from there.

Network installation. Installs STRATEGY to the network so users can install or run STRATEGY from a shared location. A network installation allows your users to choose either a local installation to install STRATEGY to their PCs or a workstation installation that uses a minimum amount of the user's hard drive space.

Silent installation. Installs to the user PCs setup options that the administrator records. This method requires no user intervention; dialog boxes inform the user of the installation progress. See Chapter 7.

CD Installation

Important: We recommend **disabling all antivirus software** before installing STRATEGY. Some antivirus software changes file properties and could prevent correct installation.

- ▶ Insert the STRATEGY CD into a local or shared CD-ROM drive. If neither is available to all users, copy the CD to the network, and have users click the *Setup.exe* icon or file from the network CD image.
- ▶ If you're using a local CD-ROM and autorun is enabled, the STRATEGY installation screen will appear.
- ▶ If the installation screen doesn't appear, click the *Setup.exe* icon or file on the CD, or:
 - From the Windows Start menu, choose Run.
 - In the Run dialog box, type G:\Setup.exe (where G is the letter assigned to the local or network CD-ROM drive.)
 - Click OK.
- ▶ Choose from the STRATEGY installation screen options.

Note: Adobe Acrobat Reader is required to view some STRATEGY documentation. If necessary, you can download it free of charge from www.adobe.com or install it from the CD. Click Install Adobe Acrobat Reader.

Note: To find the Read Me file, click Browse the CD-ROM, and click SCReadMe.txt.

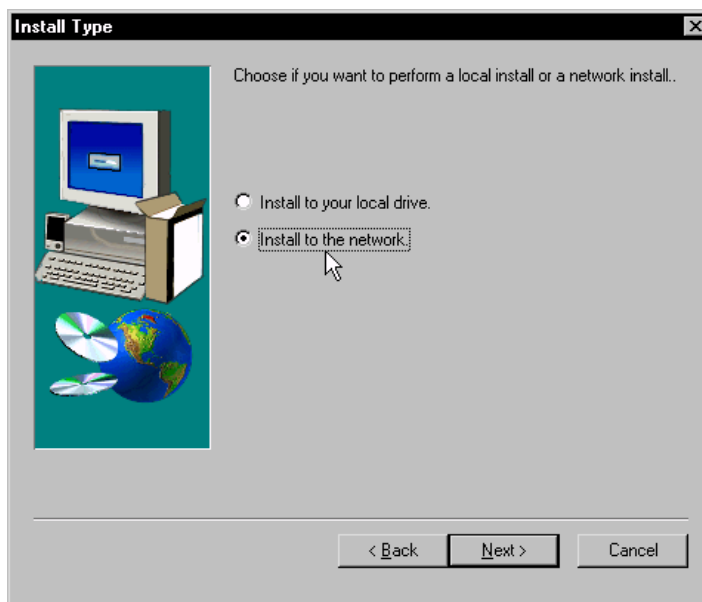
Network Installation

During network installation, the administrator installs the STRATEGY setup and client files to a shared network location. End users can then run *Setup.exe* to install files to their local PC (local installation) or access files from the network (workstation installation.)

Step 1: Install STRATEGY to the Network

Follow the instructions in “CD Installation” on p. 53. In the Install Type dialog box, choose Install to the network.

Figure 6-3
Installing to the network



Note: If you plan to keep multiple versions of STRATEGY software on the network, you may want to retain the release version in the default folder path.

Step 2: Install STRATEGY Files to User PCs

Users have two options:

- **Local installation.** Install STRATEGY files to the PC.
- **Workstation installation.** Install only required files to the PC and point to the software on the network. The product, online Help, sample files, etc., reside on the network.

To Perform a Local or Workstation Installation

- ▶ Using Windows Explorer, find the network folder in which STRATEGY was installed, and double-click the *Setup.exe* icon or file.
or
From the Windows Start menu, choose Run. Browse to the network folder where the STRATEGY *Setup.exe* file is located. Open the *Setup.exe* file, and click OK.
Note: To prevent time-out issues due to network performance, add -SMS (all capital letters) to the command—for example: *setup.exe -SMS*.
- ▶ The setup will guide you through the installation. At the Install Type dialog box, select the appropriate option (local or workstation).

Uninstalling STRATEGY

This section explains how to uninstall STRATEGY 4.5 PC software. If you want to uninstall any release prior to STRATEGY 4.5, see the *STRATEGY 4.5 Upgrade Guide* at <http://support.spss.com/upgradeinfo/>.

To Uninstall STRATEGY 4.5 from PCs

- ▶ From the Windows Start menu, choose:
 - Settings
 - Control Panel
- ▶ Double-click Add/Remove Programs.
- ▶ Choose ShowCase STRATEGY 4.5, and click Add/Remove.
- ▶ After uninstalling, reboot the computer before installing STRATEGY again.

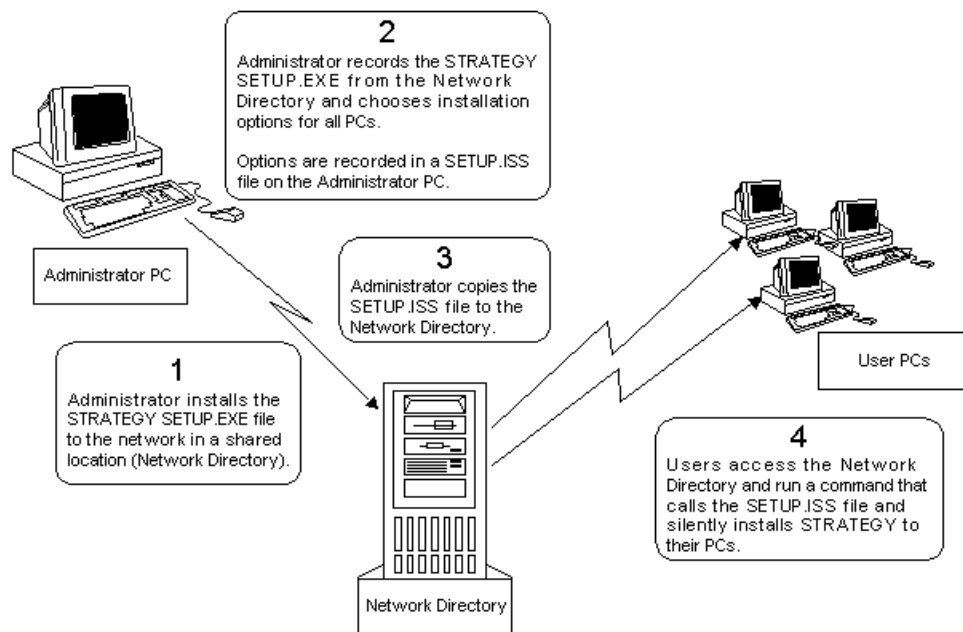
To Uninstall STRATEGY 4.5 from the Network

You must manually delete the folder from the network drive.

Setting Up Silent Installations

Silent installations allow users to install STRATEGY with installation options specified in advance and saved in a response file (*.iss) by an administrator. This installation deploys STRATEGY to many users and ensures that the same software is installed on each PC. During the silent installation, users see messages about the progress, but they cannot make installation choices.

Figure 7-1
Silent installation



Before You Begin

Important: Enterprise Server can be installed only on computers running Windows NT 4.0, Windows 2000, or Windows XP. Attempted installation of Enterprise Server on a Windows 98 machine will fail.

- A STRATEGY 4.5 silent installation will automatically uninstall versions of STRATEGY 3.0 and later. See the *STRATEGY 4.5 Upgrade Guide* or go to <http://support.spss.com/upgradeinfo/>.
- You can perform silent installations on PCs running Windows 98, Windows NT 4.0, Windows 2000, or Windows XP.
- To begin recording silent installation options, you do not have to have STRATEGY installed on your PC.
- When you record silent installation options, STRATEGY does not get installed on your computer. However, when you run the silent installation, it will be installed on the PC that you're using.
- The Back button is not active when you record a silent installation. If you need to go back and change something, you must restart recording the installation from the beginning.
- A silent installation can be done only after STRATEGY is installed on the network. It cannot be done after copying the CD to the network.
- Each PC using silent installation must have a unique PC name. If you use Microsoft Networking, the PC's Microsoft Networking name will be detected automatically.

If you don't use Microsoft Networking, the PC name remains undefined. See Chapter 4 for more information.

Creating a Silent Installation

- ▶ To install the software for which you want to create a silent installation, follow the instructions in Chapter 6.
- ▶ From the Support Web site at <http://support.spss.com/>, apply current patches to the network folder. Apply the Network Installation patch last.
- ▶ From the Windows Start menu, choose Run and enter the command:

```
e:\sourcefolder\setup.exe -r
```

where *e:\sourcefolder* is the path of the network folder in which you installed software in the first step. This command does not install STRATEGY software on the PC.

- ▶ Press Enter.

Note: If you do not use the `setup.exe -r` command as instructed above, the software will be installed on your system. No *setup.iss* file will be created.

- ▶ Follow the onscreen instructions to select installation options for users who conduct the silent installation. The path and options that you select are recorded in your *C:\Windows* folder in a *setup.iss* file.
- ▶ Copy the *setup.iss* file to the network folder in which you installed software in the first step.
- ▶ To perform the silent installation, give your users the following instructions. Alternately, you can create a batch file that automatically runs the command.

A file called *setup.log* is created in the *sourcefolder* when the silent installation runs. If installation is successful, the value of **ResultCode** in the log is 0.

For users with write authority to the sourcefolder:

From the Windows Start menu, choose Run and enter the command:

```
e:\sourcefolder\setup.exe /s
```

where *e:\sourcefolder* is the path of the network folder in which you installed software in the first step.

If installation is successful, the value of **ResultCode** in the log is 0.

For users without write authority to the sourcefolder:

From the Windows Start menu, choose Run and enter the command:

```
e:\sourcefolder\setup.exe /s -f2path\logfilename
```

where:

- *e:\sourcefolder* is the path of the network folder in which you installed software in the first step.
- *path* specifies where the log file should be created.
- *logfilename* is the name of the log file.

Using the command example above, the command would be:

```
e:\sourcefolder\setup.exe /s -f2c:\temp\setup.log
```

Creating Multiple Silent Installations

It is possible to create multiple silent installations that install specific STRATEGY applications from the same network location. To do this, you must create a separate response file (*.iss) to initiate each silent installation.

- ▶ Follow the first five steps of “Creating a Silent Installation” on p. 58.
- ▶ After the *setup.iss* file is copied to the network folder in which you installed the software, rename the file using a unique name and retaining the *.iss* extension. For example, if you want a user to install only Query and Report Writer, you could rename the *setup.iss* file *rwquery.iss*.

The path to the renamed *.iss* file must be used as an argument and a command line switch in the command line call.

Note: If there is a space in the folder name, place quotation marks around the path name.

<Path to setup.exe> <Path to new .iss> /s -f1<Path to new .iss> (optional -f2<Path to setup.log >)

Using the command example above, this would be:

```
"e:\source folder\setup.exe" "e:\source folder\rwquery.iss" /s -f1"e:\source folder\rwquery.iss" -
f2c:\temp\setup.log
```

This allows the setup program to receive the name of the renamed *.iss* file as an argument and look for recorded results in the file if your user's PC environment requires different actions than the PC used to record the installation.

Silent Setup.log File

Setup.log is the default name for the silent setup log file. It will be created in *sourcefolder* when the silent installation runs. If users do not have write authority to *sourcefolder*, the user should create a *setup.log* file on each PC. See "Creating a Silent Installation" on p. 58.

The *setup.log* file contains three sections. The first section, [InstallShield Silent], identifies the version of InstallShield Silent used in the silent setup. It also identifies the file as a log file.

The second section, [Application], identifies the installed application's name and version, and the company name.

The third section, [ResponseResult], contains the result code indicating whether the silent setup succeeded. An integer value is assigned to the **ResultCode** keyname in the [ResponseResult] section.

InstallShield places one of the following return values after the **ResultCode** keyname:

0	Success
-1	General error
-2	Invalid mode
-3	Required data not found in the <i>Setup.iss</i> file
-4	Not enough memory available
-5	File does not exist
-6	Cannot write to the response file
-7	Unable to write to the log file
-8	Invalid path to the Silent response file
-9	Not a valid list type (string or number)
-10	Data type is invalid
-11	Unknown error during setup
-12	Dialog boxes are out of order
-51	Cannot create the specified folder
-52	Cannot access the specified file or folder
-53	Invalid option selected

The following is an example of a *setup.log* file for a successful silent setup of InstallShield:

```
[InstallShield Silent]
Version=v5.1.000
File=Log File

[Application]
Name=STRATEGY
Version=4.5
Company=SPSS
Lang=0009

[ResponseResult]
ResultCode=0
```

Tips and Troubleshooting

I receive an error message that reads, "Not enough disk space."

This is likely an erroneous message, and the PC has enough disk space. There are two possible solutions:

- Copy the network installation to any local drive and install from that drive.
or
- Record the installation from a different PC.

Can I perform a silent installation into a folder with a space in the name?

Yes, if you put quotation marks around the path name. Here is an example of a multiple installation with the -f1 and -f2 parameters:

```
"N:\Applications\ShowCase STRATEGY\4.5\setup.exe" "N:\Applications\ShowCase
STRATEGY\4.5\desktop.iss" /s
-f1"N:\Applications\ShowCase STRATEGY\4.5\desktop.iss" -f2c:\temp\setup.log
```

Will the silent installation install STRATEGY on the PC that I record from?

When you record the silent installation options, STRATEGY does not get installed on your computer. However, when you run the silent installation, it will be installed on the PC that you're using.

If you want to silently install STRATEGY on the PC that you record from, refer to the sixth step in "Creating a Silent Installation" on p. 58.

Setting Up an ODBC Data Source

To set up data sources, use Microsoft ODBC Administrator (*odbcad32.exe*) installed with STRATEGY PC software. You can access it via the STRATEGY group on the Windows Start menu.

Relational components. Set up a ShowCase ODBC data source on each PC that accesses iSeries (AS/400) Warehouse Manager Server through STRATEGY applications. You will need:

- iSeries IP address
- Warehouse Manager library port number

Multidimensional components. PCs that use only multidimensional query components (Analyzer against Essbase, Essbase reporting in Query/Report Writer, or the Essbase Spreadsheet Add-ins) do not require an ODBC data source.

Non-DB2 data sources. Set up data sources to access the following:

- Microsoft Access and Excel
- Microsoft SQL Server
- Lotus Domino
- Oracle on AIX, Windows NT, or Windows 2000

For non-DB2 data source setup information, see the non-DB2 guides at <http://support.spss.com/>. After you log in, click Documentation and then click STRATEGY Manuals.

Adding a ShowCase ODBC Data Source

You should add a ShowCase ODBC data source if:

- This is your first STRATEGY installation and setup and/or you received the following message at the end of the PC installation: Setup has not created a sample ShowCase ODBC data source.
- You installed Warehouse Manager Server to a new library and want to access both the new and old Warehouse Manager libraries.

To add a ShowCase ODBC data source:

- From the Windows Start menu, choose:

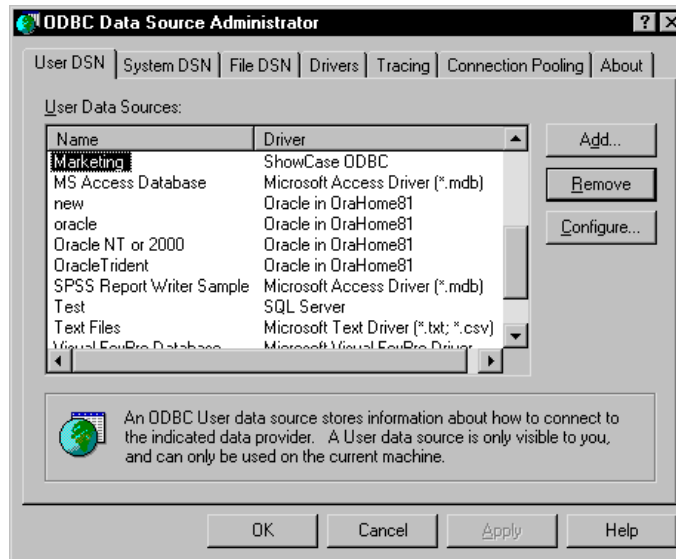
Programs

ShowCase STRATEGY 4.5

Microsoft ODBC Administrator

Figure 8-1

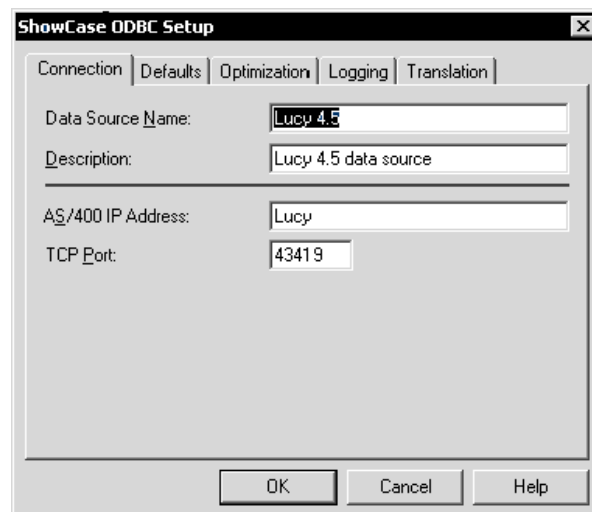
Microsoft ODBC Data Source Administrator dialog box



- Click Add.
- In the Create New Data Source dialog box, select ShowCase ODBC and click Finish.

Figure 8-2

ShowCase ODBC Setup dialog box



- ▶ Enter a data source name. Adding a description is optional.
Note: If you are sharing queries, using the same data source name on all PCs will make sharing queries easier for novice users.
- ▶ Enter your iSeries (AS/400) IP address.
- ▶ Enter your Warehouse Manager Server TCP port number. The default is 43419.
Note: If you don't know the TCP port number, use the iSeries (AS/400) WRKSRVTBLE command and search for SCSSERVERlibname, where libname is the Warehouse Manager Server library name.
- ▶ Click OK.

Modifying a ShowCase ODBC Data Source

You can modify a ShowCase ODBC data source if Warehouse Manager Server was installed to a new library and you do not want to access the old library—or if you need to change your data source name, IP address, or TCP port number.

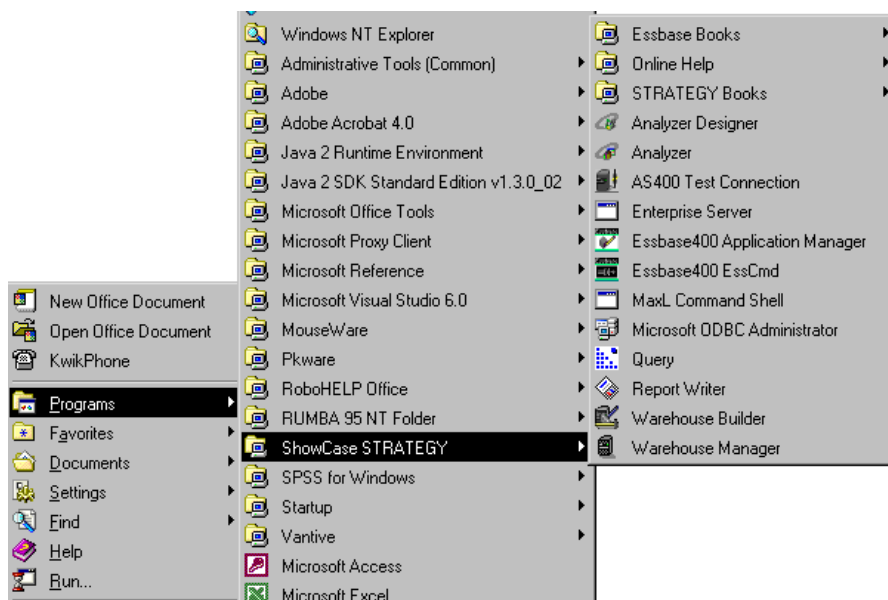
To modify a ShowCase ODBC data source via Microsoft ODBC Administrator:

- ▶ From the Windows Start menu, choose:
 - Programs
 - ShowCase STRATEGY 4.5
 - Microsoft ODBC Administrator.You will see a screen similar to Figure 8-1.
- ▶ Select the data source that you want to modify and click Configure.
A ShowCase ODBC Setup dialog box similar to Figure 8-2 appears.
- ▶ Modify the ODBC setup information as necessary.
- ▶ Click OK.

To modify a ShowCase ODBC data source via AS/400 Test Connection:

- ▶ From the Windows Start menu, choose:
 - Programs
 - ShowCase STRATEGY 4.5
 - AS/400 Test Connection
- ▶ Select the data source that you want to modify.
- ▶ Click Setup and change the information as necessary.
- ▶ Click OK.

Connecting to the iSeries (AS/400)



Connecting to Warehouse Manager Server

You can connect to Warehouse Manager Server with any of the STRATEGY PC products or with the AS/400 Test and Configure application.

Connecting with STRATEGY PC Applications

- ▶ To open a STRATEGY application, from the Windows Start menu, choose:
Programs
ShowCase STRATEGY

Query

- ▶ Open Query and from the menus, choose:
 - File
 - New
 - Query
- ▶ If you have not specified a default data source, Query will prompt you to select one. Select a data source and click Next.
- ▶ In the ShowCase ODBC Logon dialog box, enter your user ID and password and click OK.
- ▶ If your logon is successful, the Tables dialog box appears and your PC is connected to Warehouse Manager Server. If your logon is not successful, see “Connecting with the AS/400 Test and Configure Application” on p. 69.

Report Writer

- ▶ Open Report Writer and from the menus, choose:
 - File
 - New
- ▶ In the Choose Report Style dialog box, select Columnar Report and click OK.
- ▶ If you have not specified a default data source, Report Writer will prompt you to select one. Select a data source and click Next.
- ▶ In the ShowCase ODBC Logon dialog box, enter your iSeries (AS/400) user ID and password and click OK.
- ▶ If your logon is successful, the Tables dialog box appears and your PC is connected to Warehouse Manager Server. If your logon is not successful, see “Connecting with the AS/400 Test and Configure Application” on p. 69.

Warehouse Builder

- ▶ Open Warehouse Builder and select a data source to use as a control server. This is the Warehouse Manager Server library in which you want to store your distribution definitions. Click OK.
- ▶ If you have not specified a default data source, Warehouse Builder will prompt you to select one. Select a data source and click OK.
- ▶ In the ShowCase ODBC Logon dialog box, enter your iSeries user ID and password and click OK.
- ▶ If your logon is successful, the Warehouse Builder Assistant dialog box appears and your PC is connected to Warehouse Manager Server. If your logon is not successful, see “Connecting with the AS/400 Test and Configure Application” on p. 69.

Warehouse Manager Client

- ▶ Open Warehouse Manager Client and select the data source to which you want to connect.
- ▶ On the File menu, choose Connect, or click the Connect tool.
- ▶ In the ShowCase ODBC Logon dialog box, enter your iSeries user ID and password and click OK.
- ▶ If your logon is successful, your user ID appears in parentheses after the data source and your PC is connected to Warehouse Manager Server. If your logon is not successful, see “Connecting with the AS/400 Test and Configure Application” below.

Connecting with the AS/400 Test and Configure Application

The AS/400 Test and Configure application tests the ODBC data source setup. Use it to:

- Verify your connection to the correct system and library.
- Add, edit, or remove a ShowCase data source.

The Test and Configure application does not test the special checks made when STRATEGY software connects to the iSeries (AS/400). That is, there are times when Test and Configure will connect but a product will not, such as when a user is not authorized to use a product or when an application password has expired.

To open the AS/400 Test and Configure Application:

- ▶ From the Windows Start menu, choose:
 - Programs
 - ShowCase STRATEGY 4.5
 - AS/400 Test Connection

Troubleshooting Warehouse Manager Connection Failures

Troubleshooting Query and Report Writer

- Make sure that you entered your password correctly.
- Verify your default data source:
- ▶ Open Query and from the menus, choose:
 - Tools
 - Options
- ▶ Click the Data Source tab, and verify your default data source.

Troubleshooting TCP/IP

■ Verify your IP address:

Use the Microsoft ODBC Administrator to determine whether your IP address is valid.

At the MS-DOS prompt, type PING *ipaddress*, where *ipaddress* is the IP address you want to use.

If you receive a reply similar to Reply from 172.16.1.84: bytes=32 time=84ms TTL=64, your IP address is valid and the TCP/IP connection is working.

If you receive the message Request timed out, your IP address may be incorrect or TCP/IP may not be configured correctly on either your PC or the server.

For more information, see Chapter 8.

■ Verify your library port number:

At the iSeries command line, type WRKSRVTBLE and press Enter.

In the *Port* column, look for the port number you want to use. The port's service entry should be SCSSERVER *serverlib*, where *serverlib* is the name of the Warehouse Manager Server library. If you do not find the port, look for the correct library name under Service and check the correct port number for that library.

Tools
Options

■ Verify that IBM's TCP/IP is active on your iSeries (AS/400):

At the iSeries command line, type WRKACTJOB JOB(QTCPIP) and press Enter.

If you cannot find the job, type the STRTCP command and press Enter to start TCP/IP on the server.

For more information on starting and stopping TCP/IP, see the *STRATEGY Administrator's Guide*.

For more information on TCP/IP problems, see the IBM TCP/IP manual.

■ Verify that the TCP/IP master job has started on the server:

At the iSeries command line, type WRKACTJOB JOB(*serverlib*), where *serverlib* is the name of the Warehouse Manager Server library, and press Enter.

There should be an entry in the *subsystem/job* column with the same name as the library in which Warehouse Manager Server is installed. Use option 5 to work with this job and then option 11 to display the call stack. The program *TCPMASTER* in the library containing the installation should be the first program on the stack (use F11 to change the display until you see the program and library names).

For more information on using TCP/IP with STRATEGY, see the *STRATEGY Administrator's Guide*.

■ If IBM TCP/IP and the TCP/IP master job are both active, complete the steps listed below:

- ▶ At the iSeries command line, type:

```
CHGJOB JOB(serverlib/SCTCPSRV) LOG(4 00 *SECLVL) LOGCLPGM(*YES)
```

where *serverlib* is the name of the library in which Warehouse Manager Server is installed.

- ▶ Run the following iSeries commands to attempt a connection test, and note the iSeries system date and time:

```
DSPSYSVAL SYSVAL(QDATE)
DSPSYSVAL SYSVAL(QTIME)
```

- ▶ To view spooled files in the QUSER spooled file list, type the iSeries command WRKSPFL SELECT(QUSER).
- ▶ Press F6 to go directly to the bottom of the spooled list. There should be a spooled file named QPJOBLOG with a user data attribute of SCTCPSRV. Press F11 until the display shows the creation date and time. Look for the date and time of the connection failure. If you find a matching spooled file, skip the next two steps and resume the process.

Note: Almost all connection failure job logs can be found in the QUSER spooled file list. However, certain types of errors may suddenly terminate the connection directly after the initial connection is complete, and thus the job log may be in the profile's spooled file list. To find the spooled file for the ODBC profile, complete the next step.

- ▶ If you do not see a spooled file matching the date and time of the connection failure in the QUSER spooled file list, use the iSeries command WRKSPFL SELECT(odbcprofile), where *odbcprofile* is the iSeries user profile specified in the connection dialog box.
- ▶ Repeat the step beginning with "Press F6."
- ▶ Use option 5 to display the spooled file from the spooled file list. Page down and look for messages indicating the cause of the connection failure.
- ▶ If you need help in determining the cause of the connection failure, contact ShowCase Support. A copy of the job log for the failing connection will help to diagnose the connection failure.

Note: Once the connections are working, run the following command to avoid generating job logs for all connections:

```
CHGJOB JOB(serverlib/SCTCPSRV) LOG(4 00 *NOLIST) LOGCLPGM(*NO)
```

where *serverlib* is the name of the library in which the server is installed.

Note: If you need further assistance, contact ShowCase Support (see Chapter 1 for details).

Connecting to Essbase/400

Before connecting to Essbase/400 Server, use the WRKACTJOB command to verify that the server is running. The server job will have a name identical to the job description name, a job type of BCH, and a function of PGM-ESSBASE. Applications run under separate jobs with the job name identical to the application name and a job type of BCI.

To connect to Essbase/400 Server from Essbase/400 Application Manager:

- ▶ Open Essbase/400 Application Manager.
- ▶ On the Server menu, choose Connect.
- ▶ In the Essbase System Logon dialog box, enter or select the TCP/IP address or the host alias name of your Essbase/400 server in the Server drop-down list.
- ▶ Enter your user name and password, and click OK.
- ▶ If your logon is successful, your PC is ready to use Essbase/400 Server. If your logon is not successful, see “Troubleshooting Essbase/400 Connection Failures” below.

Troubleshooting Essbase/400 Connection Failures

Problem. In the Application Manager’s Essbase System Logon dialog box, no servers appear in the Server drop-down list.

Solution. Originally, the server IP or hostname must be manually entered in the Server drop-down list. After a valid connection is established, the server IP and hostname are stored.

Problem. The following error message is displayed: Network Error (10060): Unable to Connect to (x.x.x.x). The client timed out waiting to connect to the Essbase Agent using TCP/IP.

Solution. Verify your TCP/IP address. Run the DSPESEENV INFO(*ALL) command in an Essbase server library and check the second-level text of the Essbase/400 Server attributes error message. This will display the Essbase Server TCP/IP address.

Problem. The following error message is displayed: Error 1042017: The client or server timed out waiting to receive data using TCP/IP.

Solution. Create or edit the NETDELAY & NETRETRYCOUNT settings in the *.cfg* file to override the default settings. The *.cfg* file resides in the Essbase library on the server or in the */bin* folder on your PC (for example, *ShowCase STRATEGY\bin*). The file may reside on both the server and your PC.

NETDELAY dictates how long (in milliseconds) Essbase waits before retrying an unsuccessful operation. The default is 200.

NETRETRYCOUNT dictates how many times the network tries to connect to the host. The default is 600.

Increase the values based on the frequency of the error (the more often the error occurs, the larger the value). For example, increase the value of a less frequent error by hundreds; increase the value of a more frequent error by thousands.

In addition, consider how many users experience the problem. If only a few users are affected, change the PC file; if more users are affected, change the iSeries file. After editing the file, stop and restart Essbase Server.

Installing Essbase/400 Sample Applications

When you install Essbase/400 Application Manager samples on your PC, the files required to create the sample databases will be copied into the *ShowCase STRATEGY\Client* folder on your hard drive. After a network installation, you can find the files in the *ShowCase STRATEGY\Client* folder on the network. After installation, you must create the sample applications and databases and prepare them for use. This appendix explains these procedures.

Note: It is assumed that the samples and references to the sample applications in the Essbase/400 documentation set are installed from a server. However, the sample applications shipped with Essbase/400 are installed from a client PC. Therefore, be sure to specify the location of the applications accordingly. In most cases, select the Location group box of a given dialog box and choose the Client option.

Essbase/400 includes six sample applications that can be installed on your server.

- **Demo.** Contains one database—Basic—referred to in the *Essbase Technical Reference*.
- **Drinks.** Contains one database—Demo—referred to in the Analyzer documentation.
- **Sample.** Contains one database referred to throughout the Essbase/400 documentation set as Basic. The spreadsheet user guides provide a step-by-step tutorial through the spreadsheet clients.
- **Samppart.** The first of two applications designed to show the features of Essbase/400 partitioning. Samppart contains the Company database that is the target of a partitioned database.
- **Sampeast.** The second of two applications designed for Essbase/400 partitioning. Sampeast contains an East database, the source of data for a partitioned database.
- **Scsample.** Contains one database—Sales—referred to in the Query and Report Writer online Help and tutorials.

Note: To use the Samppart and Sampeast applications, your Essbase/400 Server must be registered with a license number supporting partitioning.

Creating the Sample Applications

This section explains how to set up the framework of Essbase/400 sample applications. The following instructions do not load or calculate the databases. For that information, see “Loading and Calculating the Sample Databases” on p. 80.

Complete the following six steps for each application.

- ▶ Make sure that you know:
 - The Essbase/400 Server is running
 - The server’s TCP/IP address
 - A valid user ID and associated password
- ▶ To connect to the Essbase/400 Server, from the Essbase/400 Application Manager menu, choose:
 - Server
 - Connect

The Connect dialog box requires the TCP/IP alias name or address, and a user ID and password.

- ▶ To create a new application on the server, from the menus, choose:
 - File
 - New
 - Application

Give the application the appropriate sample name: Sample, Demo, Samppart, Sampeast, Drinks, or Scsample.

- ▶ To create a new database for the application, choose:
 - File
 - New
 - Database

Name each database as follows:

Application name	Database name
Sample	Basic
Demo	Basic
Samppart	Company
Sampeast	East
Drinks	Demo
Scsample	Sales

- ▶ Move the sample database outline to the Essbase/400 Server. For instructions, see “Moving Objects from the Client to Essbase/400 Server” on p. 75. In these instructions, for file type, select Outlines

(.otl). Select the outline with the same name as the database that you're creating. See the following table:

Application/database name	Outline name
Demo Basic	Basic
Drinks Demo	Demo
Sample Basic	Basic
Samppart Company	Company
Sampeast East	East
Scsample Sales	Sales

- ▶ To continue creating the sample databases, follow the instructions below for the appropriate database:
 - **Drinks Demo.** Load and calculate the Drinks Demo database by following the instructions under “Drinks Demo” on p. 81.
 - **Demo Basic.** Move the report scripts of the Demo Basic database to Essbase/400 Server. For instructions, see “Moving Objects from the Client to Essbase/400 Server” below. In these instructions, for Files of Type, select Report Scripts (.rep). Repeat the instructions (opening and saving) for all report scripts in the folder.
 - **Sample Basic.** Move the rule objects of the Sample Basic database to Essbase/400 Server. For instructions, see “Moving Objects from the Client to Essbase/400 Server” below. While following these instructions, for Files of Type, select Rule Objects (.rul). Repeat the instructions (opening and saving) for all rule objects in the folder.
 - **Samppart Company.** Follow the instructions in “Setting Up the Environment for Samppart and Sampeast” on p. 77, and then load and calculate the database with the instructions in “Samppart Company” on p. 83.
 - **Sampeast East.** Follow the tasks in “Setting Up the Environment for Samppart and Sampeast” on p. 77, and then load and calculate the database with the instructions in “Sampeast East” on p. 84.
 - **Scsample Sales.** Move the rule object of the Scsample Sales database to Essbase/400 Server. For instructions, see “Moving Objects from the Client to Essbase/400 Server” below. In these instructions, for Files of Type, select Rule Objects (.rul) and select Textload.rul.

Moving Objects from the Client to Essbase/400 Server

This section helps you move outlines, calculation scripts, rule objects, and report scripts from the client to Essbase/400 Server.

To move an outline, calculation script, rule object, or report script, you must complete all steps in “Opening the Object” on p. 76 and “Saving the Object” on p. 76 for each object.

Opening the Object

When opening an outline file in Application Manager, you may get an error message indicating that long filenames are not supported. To solve this problem, move the client folder containing your outlines, calculation scripts, report files, and rules files (for example, *C:\Program Files\ShowCase STRATEGY\Client*) to your root folder.

- ▶ From the Essbase/400 Application Manager menu, choose:
 - File
 - OpenThe Open Object dialog box appears.
- ▶ In the Location group, select Client.
- ▶ In the Application box, select the application for which you want to move an outline, calculation script, rule object, or report script.
- ▶ In the Database box, select the database for which you want to move an outline, calculation script, rule object, or report script.
- ▶ Click File System. The Open Client File dialog box appears.
- ▶ Navigate to the folder in which you installed STRATEGY sample applications (for example, *C:\Program Files\ShowCase STRATEGY\Client*).
- ▶ Click the folder corresponding to the sample database that you're creating: Demo, Drinks, Sampeast, Sample, Samppart, or Scsample.
- ▶ In the Files of Type box, select the file type of the object that you want to move: Outlines (.otl), Calc Scripts (.csc), Rule Objects (.rul), or Report Scripts (.rep).
- ▶ Select the file to move and click Open.

Saving the Object

- ▶ From the File menu, choose Save As. The Save Object dialog box appears.
- ▶ In the Location group, select Server.
- ▶ In the Server box, select the TCP/IP name or address of the server to which you want to move the outline, calculation script, rule object, or report script.
- ▶ In the Application box, select the application for which you are saving the outline, calculation script, rule object, or report script.

- ▶ In the Database box, select the database for which you are saving the outline, calculation script, rule object, or report script.
- ▶ In the List Objects of Type box, select the appropriate object: Outlines, Calc Scripts, Rule Objects, or Report Scripts.
- ▶ In the Object Name box, type the object name of the outline, calculation script, rule object, or report script that you are saving.
- ▶ Click OK.
 - If Essbase/400 displays a message indicating that the object already exists and asks if you would like to replace the existing object, click Yes.
 - If Essbase/400 displays a message indicating that the object is unlocked and asks if you would like to replace the existing object, click Yes.
 - If Essbase/400 displays a message indicating that the object did not originate from the latest version of the server and that you could lose data and then asks if you want to continue, click Yes.
- ▶ Close the appropriate window: outline viewer, calculation script editor, rule object editor, or report script editor.
- ▶ To finish creating the Demo Basic, Drinks Demo, Sample Basic, or Scsample Sales databases, you must load the data. The following table indicates where to find the instructions to load data into the sample database that you are creating.

Database name	Reference
Demo Basic	“Demo Basic” on p. 81
Drinks Demo	“Drinks Demo” on p. 81
Sample Basic	“Sample Basic” on p. 82
Scsample Sales	“Scsample Sales” on p. 85

Setting Up the Environment for Samppart and Sampeast

Essbase/400 includes two sample applications and databases that show the features of partitioning: Samppart Company and Sampeast East. They include partition definitions stored in *.ddb* files.

The *.ddb* files define the map between member combinations in the target database (Company) and the source database (East). For instructions on setting up partitions, see the *Essbase Database Administrator's Guide*. This guide also explains member combinations and the differences between target and source databases.

For these applications to work in your environment, you must match or change the information contained in the *.ddb* files. To use the applications, do the following:

- Create the user name that designed the applications.
- Change the server name embedded in the applications.

Note: Do not physically change the *.ddb* file information. Instead, complete the steps in the following sections. “Creating the Partition User” describes how to create the user name so your

users can use these applications. “Changing the Server Name in Sample Partition Definitions” on p. 79 describes how to change the embedded server name to the name of your Essbase/400 Server.

Creating the Partition User

Because the Samppart and Sampeast applications were designed by a user called *partitionuser*, you must create a user called *partitionuser* to work with these applications. Partitionuser must have Application Designer access to these applications on the server where they are installed. If you are unsure how to create a user and you use the Integrated Security feature of Essbase/400, see the *STRATEGY Administrator's Guide*. If you do not use Integrated Security, complete the following steps:

- ▶ From the Essbase/400 Application Manager menu, choose:
 - Server
 - Connect
- ▶ Connect to the server with the Samppart and Sampeast applications. Log on as a user that has supervisor privilege.
- ▶ From the Security menu, choose Users/Groups.
- ▶ In the User/Group Security dialog box, click the New User button to open the New User dialog box.
- ▶ In the Username box, enter *partitionuser*, using lowercase letters.
- ▶ In the Password box, enter a password.
- ▶ In the Confirm Password box, type your password again.
- ▶ Click the App Access button to open the User/Group Application Access dialog box.
- ▶ Select the Sampeast application, and then select App Designer in the Access group box.
- ▶ Select the Samppart application, and then select App Designer in the Access group box.
- ▶ Double-click OK to return to the User/Group Security dialog box.
- ▶ Click Close.
- ▶ From the Server menu, choose Disconnect to log off of the server. Click OK.
- ▶ From the Server menu, choose Connect and log on as *partitionuser*. The Application Desktop window appears. You are ready to continue setting up the Samppart and Sampeast applications. See “Changing the Server Name in Sample Partition Definitions” on p. 79.

Changing the Server Name in Sample Partition Definitions

The following steps change the embedded server name in the partition definition files (.ddb) to the Essbase/400 Server name. The .ddb files shipped with Samppart and Sampeast are based on the server name *Localhost*.

Note: You must complete the steps in “Creating the Partition User” on p. 78 before continuing.

Changing the Server Name for the Samppart Company Database

The following steps change the server name in the Samppart Company .ddb file.

- ▶ In the Application Desktop window, select the Samppart application and Company database.
- ▶ From the Database menu, choose Partition Manager to open the Partition Manager dialog box.
Note: If the Partition Manager dialog box doesn't appear or if it doesn't contain definition entries, contact your Essbase/400 system administrator. Your Essbase/400 Server must be registered with a license number that supports partitioning.
- ▶ In the Source Cube list, select the first definition entry—Localhost:Sampeast:East.
- ▶ Click Edit. The Dangling Remote Reference dialog box appears. Because you are not connected to a server named *Localhost*, Essbase/400 is warning you before it allows you to edit the definition.
- ▶ Click Advanced. The Fix Dangling Partition Reference dialog box appears.
- ▶ In the Action group, select Correct the invalid partition reference.
- ▶ In the Reconnect group, in the Server text box, replace *Localhost* with the name of your Essbase/400 Server (for example, ESSBASE).
- ▶ Click Apply. You are returned to the Partition Manager dialog box.
- ▶ In the Source Cube list, select the second definition entry—Localhost:Sampeast:East.
- ▶ Repeat the four steps beginning with “Click Edit” and ending with “Click Apply.”
- ▶ In the Target Cube list, select the first definition entry—Localhost:Sampeast:East.
- ▶ Repeat the four steps beginning with “Click Edit” and ending with “Click Apply.”
- ▶ From the Partition menu, choose Close to return to the Application Desktop window.
You have successfully changed the server name in the Samppart Company .ddb file.

Changing the Server Name for the Sampeast East Database

The following steps change the server name in the Sampeast East *.ddb* file.

- ▶ In the Application Desktop window, select the Sampeast application and East database.
- ▶ From the Database menu, choose Partition Manager to open the Partition Manager dialog box.
- ▶ In the Source Cube list, select the first definition entry—*Localhost:Samppart:Company*.
- ▶ Click Edit. The Dangling Remote Reference dialog box appears. Because you are not connected to a server named *Localhost*, Essbase/400 is warning you before it allows you to edit the definition.
- ▶ Click Advanced. The Fix Dangling Partition Reference dialog box appears.
- ▶ In the Action group, select Correct the invalid partition reference.
- ▶ In the Reconnect group, in the Server text box, replace *Localhost* with the name of your Essbase/400 Server (for example, ESSBASE).
- ▶ Click Apply. You are returned to the Partition Manager dialog box.
- ▶ In the Source Cube list, select the first definition entry—*Localhost:Samppart:Company*.
- ▶ Repeat the four steps beginning with “Click Edit” and ending with “Click Apply.”
- ▶ In the Target Cube list, select the second definition entry—*Localhost:Samppart:Company*.
- ▶ Repeat the four steps beginning with “Click Edit” and ending with “Click Apply.”
- ▶ From the Partition menu, choose Close to return to the Application Desktop window.

You have successfully changed the server name in the Sampeast East *.ddb* file.

Note: When you have completed the instructions in “Setting Up the Environment for Samppart and Sampeast” on p. 77, you can continue building the Samppart or Sampeast databases. See “Samppart Company” on p. 83 or “Sampeast East” on p. 84.

Loading and Calculating the Sample Databases

Now that you’ve created the new application and database for the sample database and saved any necessary rule files or report scripts on the server, you’re ready to load the data into the database and calculate it. The following sections will cover loading and calculating each sample database.

Demo Basic

The Demo application contains one database called Basic. To prepare it for use, you must load and calculate the data.

Note: When loaded, the Demo Basic database uses approximately 2MB of disk space on the server, in addition to the size of the data source file.

- ▶ From the Essbase/400 Application Manager menu, choose:
 - Server
 - Connect
- ▶ Connect to the server on which the Demo application is installed.
- ▶ In the Applications box, select Demo.
- ▶ In the Databases list, select Basic.
- ▶ From the Database menu, choose Load Data to open the Data Load dialog box.
- ▶ Click Find to locate a data file to load. The Open Server Data File Objects dialog box appears.
- ▶ In the Location group, select Client.
- ▶ Make sure Text files is selected in the List Objects of Type box.
- ▶ In the Objects list, select DATA.
- ▶ Click OK. The Data Load dialog box is updated to display the data file that you chose.
- ▶ Click OK to load the selected file. The data file is approximately 660KB. It will take a minute or two to load, and then the Data Load Completed dialog box appears.
- ▶ Click Close.

Once the data is loaded into the database, Essbase/400 automatically commits the data to the disk. You can safely stop the application or server and then restart it.

Drinks Demo

The Drinks application contains one database called Demo. To prepare it for use, you must load and calculate the data.

- ▶ From the Essbase/400 Application Manager menu, choose:
 - Server
 - Connect

- ▶ Connect to the server on which the Drinks application is installed.
- ▶ In the Applications box, select DRINKS.
- ▶ In the Databases list, select Demo.
- ▶ From the Database menu, choose Load Data to open the Data Load dialog box.
- ▶ Click Find to locate a data file to load. The Open Server Data File Objects dialog box appears.
- ▶ In the Location group, select Client.
- ▶ Make sure Text files is selected in the List Objects of Type box.
- ▶ In the Objects list, select DATA.
- ▶ Click OK. The Data Load dialog box is updated to display the data file that you chose.
- ▶ Click OK to load the selected file. The data file is approximately 3MB. It will take several minutes to load, and then the Data Load Completed dialog box appears.
- ▶ Click Close.
- ▶ To calculate the database, from the Database menu, choose Calculate.
- ▶ Select (Default) in the Calc Scripts list box and click OK.

Once the data is loaded into the database, Essbase/400 automatically commits the data to the disk. You can safely stop the application or server and then restart it.

Sample Basic

The first database in the Sample application is called Basic. To prepare it for use, you must load and calculate the data.

Note: When loaded, the Sample Basic database uses approximately 5MB of disk space on the server, in addition to the size of the data source file.

- ▶ From the Essbase/400 Application Manager menu, choose:
 - Server
 - Connect
- ▶ Connect to the server on which the Sample application is installed.
- ▶ In the Applications box, select Sample.
- ▶ In the Databases list, select Basic.

- ▶ From the Database menu, choose Load Data to open the Data Load dialog box.
- ▶ Click Find to locate a data file to load. The Open Server Data File Objects dialog box appears.
- ▶ In the Location group of the Open Server Data File Objects dialog box, select Client.
- ▶ In the List Objects of Type box, be sure that Text files is selected.
- ▶ In the Objects list box, select CALCDAT.
- ▶ Click OK. The Data Load dialog box is updated to display the data file that you chose.
- ▶ Click OK to load the selected file. The data file is approximately 3MB. It will take several minutes to load, and then the Data Load Completed dialog box appears.
- ▶ Click Close.

Once the data is loaded into the database, Essbase/400 automatically commits the data to the disk. You can safely stop the application or server and then restart it.

Samppart Company

After setting up the environment for the Samppart and Sampeast applications (as described in “Providing User Access to the Sample Applications” on p. 86), you must load data into the database of each application. This section explains how to load and calculate the Samppart Company data.

Note: When loaded, the Samppart Company database uses approximately 2MB of disk space on the server, in addition to the size of the data source file.

- ▶ From the Essbase/400 Application Manager menu, choose:
 - Server
 - Connect
- ▶ Connect to the server on which the Demo application is installed. Log on as partitionuser or as a user with supervisor privilege.
- ▶ In the Applications box, select Samppart.
- ▶ In the Databases list, select Company.
- ▶ From the Database menu, choose Load Data to open the Data Load dialog box.
- ▶ Click Find to locate a data file to load. The Open Server Data File Objects dialog box appears.
- ▶ In the Location group, select Client.
- ▶ Make sure Text files is selected in the List Objects of Type box.

- ▶ In the Objects list, select CALCCOMP.
- ▶ Click OK. The Data Load dialog box is updated to display the data file that you chose.
- ▶ Click OK to load the selected file. The data file is a large, fully calculated data set. It should take about a minute to load, and then the Data Load Completed dialog box appears.
- ▶ Click Close.

Once the data is loaded into the database, Essbase/400 automatically commits the data to the disk. You can safely stop the application or server and then restart it.

Sampeast East

After setting up the environment for the Samppart and Sampeast applications (as described in “Providing User Access to the Sample Applications” on p. 86), you must load data into the database of each application. This section explains how to load and calculate the Sampeast East data.

Note: When loaded, the Sampeast East database uses approximately 1.5MB of disk space on the server, in addition to the size of the data source file.

- ▶ From the Essbase/400 Application Manager menu, choose:
 - Server
 - Connect
- ▶ Connect to the server on which the Demo application is installed. Log on as `partitionuser` or as a user with supervisor privilege.
- ▶ In the Applications box, select Sampeast.
- ▶ In the Databases list, select East.
- ▶ From the Database menu, choose Load Data to open the Data Load dialog box.
- ▶ Click Find to locate a data file to load. The Open Server Data File Objects dialog box appears.
- ▶ In the Location group, select Client.
- ▶ Make sure that Text files is selected in the List Objects of Type box.
- ▶ In the Objects list, select CALCEAST.
- ▶ Click OK. The Data Load dialog box is updated to display the data file that you chose.
- ▶ Click OK to load the selected file. The data file is a small, fully calculated data set. It should take about a minute to load, and then the Data Load Completed dialog box appears.
- ▶ Click Close.

Once the data is loaded into the database, Essbase/400 automatically commits the data to the disk. You can safely stop the application or server and then restart it.

Scsample Sales

The Scsample application contains one database called Sales. To prepare it for use, you must load and calculate the data.

- ▶ From the Essbase/400 Application Manager menu, choose:
 - Server
 - Connect
- ▶ Connect to the server on which the Scsample application is installed.
- ▶ In the Applications box, select Scsample.
- ▶ In the Databases list, select Sales.
- ▶ From the Database menu, choose Load Data to open the Data Load dialog box.
- ▶ Click Find to locate a data file to load. The Open Server Data File Objects dialog box appears.
- ▶ In the Location group, select Client.
- ▶ Click the File System button. The Open Client Data Files dialog box appears.
- ▶ Navigate to the *C:\Program Files\ShowCase STRATEGY\Client* folder and select the *Scsample* folder.
- ▶ In the Files of Type box, verify that Text Files (.txt) is selected.
- ▶ Select DATA.txt and click OK. The Data Load dialog box is updated to display the data file you that chose.
- ▶ Select the Use Rules option and click the Find button below the Use Rules option. The Open Server Rules Object dialog box appears.
- ▶ In the Open Server Rules Object dialog box, verify the following options:
 - For Location, verify that Server is selected.
 - For Server, verify that the IP address of the Essbase/400 Server containing the Scsample application is selected.
 - For Application, verify that Scsample is selected.
 - For Database, verify that Sales is selected.
 - For List Objects of Type, verify that Rule Objects is selected.

- ▶ In the Objects box, select Textload and click OK to load the data. The data file is approximately 430KB. It will take several minutes to load, and then the Data Load Completed dialog box appears.
- ▶ Click Close.
- ▶ To calculate the database, from the Database menu, choose Calculate.
- ▶ Select (Default) in the Calc Scripts list box and click OK.

Once the data is loaded into the database, Essbase/400 automatically commits the data to the disk. You can safely stop the application or server and then restart it.

Providing User Access to the Sample Applications

Essbase/400 provides a comprehensive security system for a secure multi-user environment. By default, the sample applications are created with a security access level of No Access, which means no user can connect to the database without supervisor authority.

The first user on the client is the user name defined when the Essbase/400 Server was installed. This user automatically has supervisor privilege.

To provide all users with write access to the database:

- ▶ From the Essbase/400 Application Manager menu, choose:
 - Server
 - Connect
- ▶ Connect to the server on which the sample application is installed.
- ▶ In the Applications box, select the sample application to which you want to grant access.
- ▶ From the Application menu, choose Settings. The Application Settings dialog box appears.
- ▶ In the Minimum Database Access group, select Write.
- ▶ Click OK.
- ▶ Repeat the above steps for each sample application to which you want to give your users access.

At this point, the Essbase/400 sample applications are ready for use. Next, create the appropriate user IDs and security settings so that your users can log on to Essbase/400. For more information on Essbase/400 security, see the *STRATEGY Administrator's Guide*.

- Access (Microsoft) data sources, 5
- accessing the STRATEGY CD via a network, 52
- adding a new ShowCase ODBC data source, 63
- Adobe Acrobat, 52
 - installing, 53
 - internal errors, 52
- Analyzer
 - migrating to Hyperion Analyzer, 15
 - setup, 50
- Analyzer for the Web, 52
 - release notes, 15
- APPC support, 13
- AS/400
 - connecting to, 27, 67, 71
 - IP address, 51
 - remote setup, 24
 - requirements, 17
- AS/400 Test Connection
 - connecting with, 69
- ASCII CCSID, 42
- Asia Pacific support, 3
- Automating
 - client installation, 57
- Auxiliary Storage Pool ID (ASP), 34, 41

- backing up existing libraries, 18
- before you install, 49

- CCSID, 42
- changing
 - CCSIDs for profiles and jobs, 44
 - PC names, 25
 - server name for the Samppart Company database, 79
 - server names for the Sampeast East database, 80
 - server names in the sample partition definitions, 79
- client requirements, 21
- commands
 - new, 12
- concurrent licensing, 26
- configuring
 - Essbase options, 44
 - storage CCSIDs, 39
 - Warehouse Builder, 40
 - configuring and starting TCP/IP, 18
- connecting
 - to the iSeries (AS/400), 27, 67
 - to Warehouse Manager Server, 67
- contacting
 - documentation team, iv
 - support, 1
- copying
 - the CD to the network, 53
- creating
 - sample applications, 73
 - the partition user, 78

- data
 - loading into Essbase/400, 20
- data sources
 - editing, 65
 - modifying, 65
- DB2/400
 - loading data into Essbase/400, 20
- .DDB files, 77
- deleting software, 55
- demo access period, 27
- Demo Basic database, 81
- deployment tips, 57
- disk space, 17
- documentation
 - enhancements, 9
 - online, iv
 - providing direct feedback, iv
- Domino data sources, 5
- double-byte considerations, 20
- DRDA, 24

- EBCDIC CCSID, 40, 42
- e-mail support, 1
- entering passwords
 - Essbase, 30
 - Warehouse Manager Client, 28
- Enterprise Reporting
 - enhancements, 5
 - migrating data, 31, 37

- release notes, 16
 - storage CCSID, 39
- environment requirements, 17
- Essbase client requirements, 21
- Essbase/400
 - Auxiliary Storage Pool ID, 41
 - CCSID, 42
 - concurrent report requests, 42
 - connecting to, 71
 - double-byte run-time issues, 44
 - EBCDIC CCSID, 42
 - enhancements, 9
 - installation library, 41
 - installation parameters, 41
 - installing, 31
 - IP address, 42
 - loading data, 20
 - partitioning sample applications, 73
 - passwords, 29
 - product serial number, 41
 - sample applications, 73
 - server, 29
 - server requirements, 20
- European support, 2
- Excel data sources, 5
- fax support, 1
- firewalls, 22
- general enhancements, 5
- general requirements, 17
- hardware requirements, 17, 21
- HTTP server requirements, 22
- Hyperion Analyzer, 9
 - migrating to, 15
- Hyperion Web Client, 11
- installation
 - local, 54
 - options, 32
 - PC software, 53
 - silent, 57
 - workstation, 54
- installation library
 - Essbase/400, 41
 - Warehouse Manager Server, 33
- installation parameters
 - Essbase/400, 41
 - Warehouse Manager Server, 33
- installing
 - Essbase/400 sample applications, 73
 - from CD, 53
 - on a double-byte system, 44
 - sample applications, 73
 - sample database, 41
 - tips, 19, 20
 - to a large group of users, 57
 - Warehouse Manager Server, 32
- Internet browser requirements
 - Analyzer for the Web, 22
 - PC, 21
- Internet support, 1
- IP address, 42
- iSeries (AS/400)
 - connecting to, 27, 67
 - IP address, 51
 - remote setup, 24
 - requirements, 17
- J.D. Edwards
 - enhancements, 10
 - requirements, 18
 - STRATEGY Interlink, 34
- Japan and Asia Pacific support, 3
- Java Developer Kit, 18, 20
- Java Toolbox, 18, 19
- licenses, 41, 49
 - concurrent, 26
 - managing, 30
 - per-seat, 26, 27
 - removing, 30
 - transferring, 30
- loading data into Essbase/400, 20
- managing per-seat licenses, 30
- MaxL command interface, 9
- modifying a ShowCase ODBC data source, 65
- moving
 - objects from the client to Essbase/400 Server, 75
- naming your PC, 49
- national language support, 33

- network
 - accessing the ShowCase STRATEGY CD, 52
 - copying the CD, 53
 - installation, 54
- network installation, 50
- non-DB2 data sources, 5
- North American support, 2

- ODBC, 69
 - testing the configuration, 69
- online documentation, iv
- options
 - installation, 32
- Oracle data sources, 5
- Orion Application Server
 - Analyzer for the Web, 22
 - installing, 37

- parameters
 - installation, 32
- partition definitions, 77
- partitioning sample applications, 73
- passwords, 41, 49
 - permanent, 28
 - temporary, 27
- PC licenses
 - managing, 30
 - removing, 30
 - transferring, 30
- PC naming, 25, 49
 - overview, 25
- permanent passwords, 28
- permanent product serial numbers, 29
- per-seat licensing, 27
- preparing
 - Demo Basic database, 81
 - Drinks Demo database, 81
 - Sampeast East database, 84
 - Sample Basic database, 82
 - Samppart Company database, 83
- prerequisites, 17
- product serial numbers, 29, 41
 - permanent, 28, 29
 - temporary, 29
- providing user access to sample applications, 86

- Query, 11, 69
 - connecting to the iSeries (AS/400), 68
 - enhancements, 11

- reinstalling STRATEGY PC software, 30
- release notes, 13
- remote iSeries setup for Warehouse Builder, 24
- removing
 - PC license, 30
 - PC software, 55
- Report Writer, 68, 69
 - connecting to the iSeries (AS/400), 68
 - release notes, 16
- requirements, 17
 - Analyzer for the Web, 22
 - disk space, 17, 21
 - Enterprise Reporting, 22
 - environment, 17
 - Essbase client, 21
 - HTTP server, 22
 - Internet browser, 21
 - RAM, 21
 - software and hardware, 21
 - TCP/IP, 18
 - Warehouse Builder, 23
 - Warehouse Manager Server, 18
 - Windows NT, 24
 - Windows version, 21
- running
 - setup multiple times, 52

- S36 files, 19
- Sampeast application
 - setting up the environment, 77
- Sampeast East database, 84
 - changing the server name, 80
- sample applications, 73
- Sample Basic database, 82
- sample database
 - installing, 41
- Samppart application
 - setting up the environment, 77
- Samppart Company database, 83
 - changing the server name, 79
- security
 - supplemental groups, 19
- security settings, 39
- server
 - commands, 12
 - installing, 32
 - preparation, 17
- setting
 - Essbase/400 installation parameters, 41
 - library access, 39

- setting up
 - a ShowCase ODBC data source, 63
 - silent installations, 57
 - the environment for the sample applications, 77
- ShowCase STRATEGY
 - installing, 31, 49
 - removing, 52, 55
- silent installations, 57
- software requirements, 21
- SQL
 - loading data into Essbase/400, 20
- SQL drill-through
 - release notes, 16
- starting Essbase Server, 43
- Storage CCSID configuration
 - Warehouse Manager, 39
- STRATEGY
 - environment requirements, 17
 - reinstalling, 30
- supplemental groups, 19
- support
 - Internet, 1
- system requirements, 17
 - Warehouse Manager Server, 18
- TCP port, 51
- TCP/IP, 31
 - checking job logs, 70
 - verifying TCP/IP is started, 70
 - verifying the port number address, 70
- telephone support, 1
- temporary passwords, 27
- temporary product serial numbers, 29
- transferring or removing a PC license, 30
- troubleshooting
 - TCP/IP, 70
 - Warehouse Manager connections, 69
- uninstalling
 - PC software, 49, 55
- uninstalling ShowCase STRATEGY, 52, 55
- V4R5 requirements, 18, 20
- V5R1 requirements, 18, 20
- Warehouse Builder, 68
 - connecting to the iSeries (AS/400), 68
 - release notes, 16
 - remote iSeries (AS/400s), 24
 - requirements, 23
- Warehouse Manager Client
 - connecting to the iSeries (AS/400), 69
 - entering passwords, 28
- Warehouse Manager Server
 - Auxiliary Storage Pool ID, 34
 - choosing a library, 33
 - enhancements, 12
 - installing, 31
 - licensing, 26
 - passwords, 27
 - requirements, 18
 - storage CCSID, 39
 - troubleshooting connection failures, 69
 - using passwords, 27
- Warehouse Manager Server library, 33
- Websphere
 - Analyzer for the Web, 22
- Windows NT
 - requirements, 24
- workstation installations, 54