

# Configuring Microsoft IIS 5.0 and Tomcat 4.0.4 for Analyzer Fix Pack 2

This document explains how to configure Microsoft IIS 5.0 and Tomcat 4.0.4 so that they work together. The following instructions are based on the Windows 2000 Professional SP3 platform. The manual configuration steps and files are referenced from R. Barr and A. Conrad (<http://www.getnet.net/~rbarr/TomcatOnIIS/default.htm>).

NOTE: All Path information listed in this document is pointing to default paths taken during Installation of all products (including Analyzer Windows Client which is covered in general in a different document regarding how to install Analyzer Fix Pack 2)

## Overview of steps

1. Download the file iis\_tomcat.zip
2. Extract the zip file into C:\Program Files\Apache Tomcat 4.0
3. Update the Windows Registry by double clicking the file called isapi\_redirector.reg
4. Create a new Virtual Directory called “jakarta” in IIS
5. Add a new ISAPI Filter called “jakarta” within IIS
6. Stop and restart IIS

The file paths specified in this document refer to the default paths that you can select during the installation of a given product. If you custom file paths instead of the defaults provided during the Tomcat installation and Analyzer Windows Client installation, you need to change the workers.properties file and uriworkermap.properties file as noted. However, if you use the default file paths, the updated workers.properties file and uriworkermap.properties file been are included in the iis\_tomcat.zip file and you do not need to make additional changes to these files.

## Prerequisites

1. Ensure that IIS 5.0 is installed and running on Port 80 of your Windows server. You can verify that IIS is correctly running by opening <http://hostname> in a Web browser.
2. Set the JAVA\_HOME environmental variable as a system variable so that it points to the file path that the Analyzer Windows Client is installed to (the default file path is: C:\hyperion\analyzer\jdk).
3. Ensure that Tomcat 4.0.4 is installed and running on the default Port 8080. You can verify that Tomcat is correctly running by opening <http://hostname:8080> in a Web browser.
4. Ensure that the CATALINA\_HOME environmental variable is set to the path that Tomcat 4.0.4 is installed to (the default file path is: C:\Program Files\Apache Tomcat 4.0).
5. Ensure that Tomcat 4.0.4 can serve the example Java Server Page (JSP) files. You can verify that Tomcat can serve the JPS files by opening <http://localhost:8080/examples/jsp/dates/date.jsp> in a Web browser.
6. Set the registry settings for isapi\_redirector.dll and double check workers.properties file and uriworkermap.properties file for correct information as listed below.

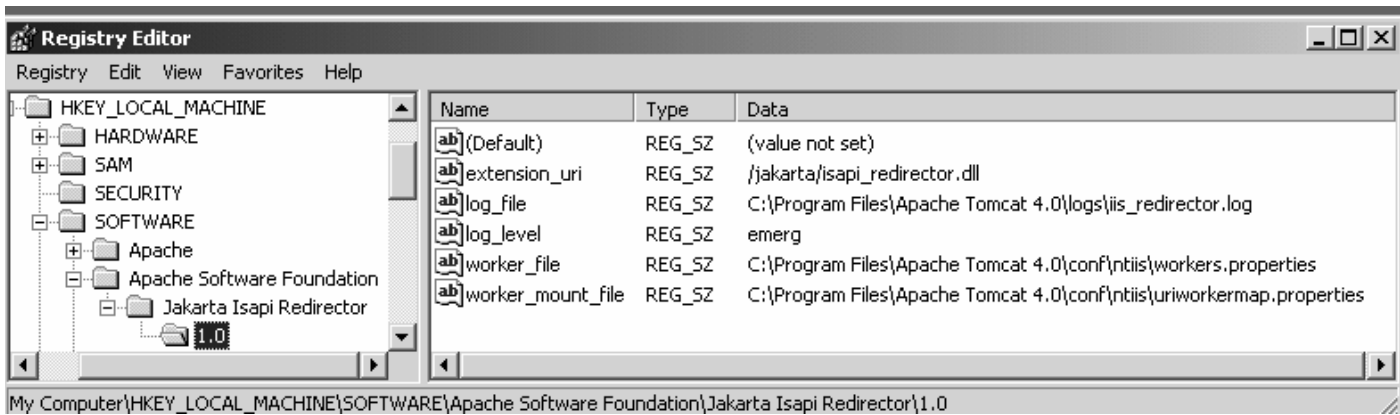
## Download iis\_tomcat.zip

1. Download iis\_tomcat.zip from [ftp://ftp.service.ibm.com/ps/products/db2olap/fixes/v81/fp2/iis\\_tomcat.zip](ftp://ftp.service.ibm.com/ps/products/db2olap/fixes/v81/fp2/iis_tomcat.zip). The iis\_tomcat.zip file contains the following 4 files:
  - isapi\_redirector.reg, which sets up the necessary information into the Windows registry
  - isapi\_redirector.dll which provides the bridge between IIS and Tomcat
  - workers.properties which is a required file for ISAPI
  - uriworkermap.properties which is a required file for ISAPI
2. Extract iis\_tomcat.zip into your CATALINA\_HOME directory (default path is C:\Program Files\Apache Tomcat 4.0).

**NOTE: You must extract the iis\_tomcat.zip zip file into the CATALINA\_HOME directory. This zip file creates necessary subdirectories and files into specific, required locations.**

## IIS registry file

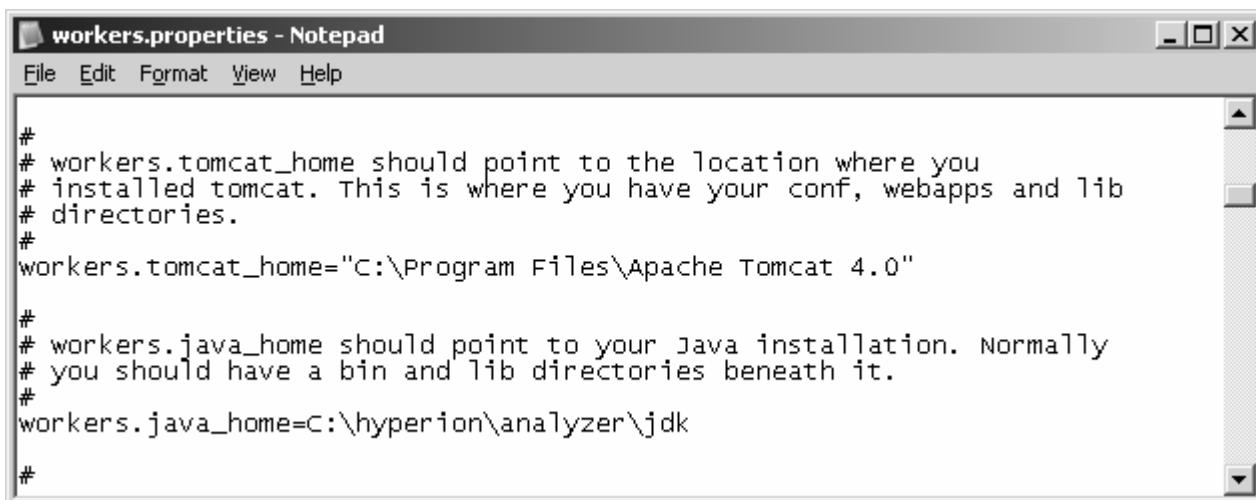
1. In a text editor, open the isapi.redirector.reg registry file located in the CATALINA\_HOME directory. If you did not use the default paths and settings, change the path information as necessary so that:
  - Log\_file points to the CATALINA\logs\iis\_redirector.log  
(C:\Program Files\Apache Tomcat 4.0\logs\iis\_redirector.log)
  - worker\_file points to CATALINA\conf\ntiis\workers.properties  
(C:\Program Files\Apache Tomcat 4.0\conf\ntiis\workers.properties)
  - worker\_mount\_file points to the CATALINA\conf\ntiis\uriworkermap.properties  
(C:\Program Files\Apache Tomcat 4.0\conf\ntiis\uriworkermap.properties)
2. Save the file if you made any changes, then close the file.
3. Double-click the isapi.redirector.reg registry file to open it in the Registry Editor.
4. To view the registry values, as shown in Figure 1:
  - a. Expand the HKEY\_LOCAL\_MACHINE folder
  - b. Expand the Software folder.
  - c. Expand the Apache Software Foundation folder
  - d. Expand the Jakarta ISAPI Redirector folder.
  - e. Expand the 1.0 folder.



**Figure 1 - The isapi.redirector.reg registry file in the Registry Editor**

## Editing the workers.properties file

A modified version of the workers.properties file is included in the iis\_tomcat.zip file. It has been modified to include the correct values for the two values that need to be set. Figure 2 shows the portion of the workers.properties file that includes the modified workers.tomcat\_home and workers.java\_home values.



**Figure 2- Modified workers.properties file**

If you did not install IIS or Tomcat in the default directories, you need to edit the workers.properties file by completing the following steps so that the values correspond to your custom installation paths:

1. In a text editor, open the workers.properties file located in the CATALINA\_HOME\conf\ntiis directory.
2. Edit the workers.tomcat\_home value so that it refers to the CATALINA\_HOME directory.
3. Edit the workers.java\_home value so that it refers to the JAVA\_HOME directory.

## Configuring IIS

To configure IIS:

1. Start the Microsoft IIS Internet Services Manager.
2. Right-click **Default Web Site** and select **Properties**.
3. Click the Directory Security page.
4. Click the **Anonymous Access and Authentication Control Edit** button
5. Ensure that the Anonymous user is a valid Windows user and has read, write, or change privileges.
6. Click **OK**.
7. Right-click **Default Web Site** and select **New --> Virtual Directory**.
8. Enter jakarta in the **Alias** field as shown in Figure 3. The new alias name must be jakarta. Click **Next**.



Figure 3 – New alias name

9. Enter the path to the directory that contains the isapi\_redirector.dll file. The default path is: C:\CATALINA\_HOME\bin as shown in Figure 4. Click **Next**.

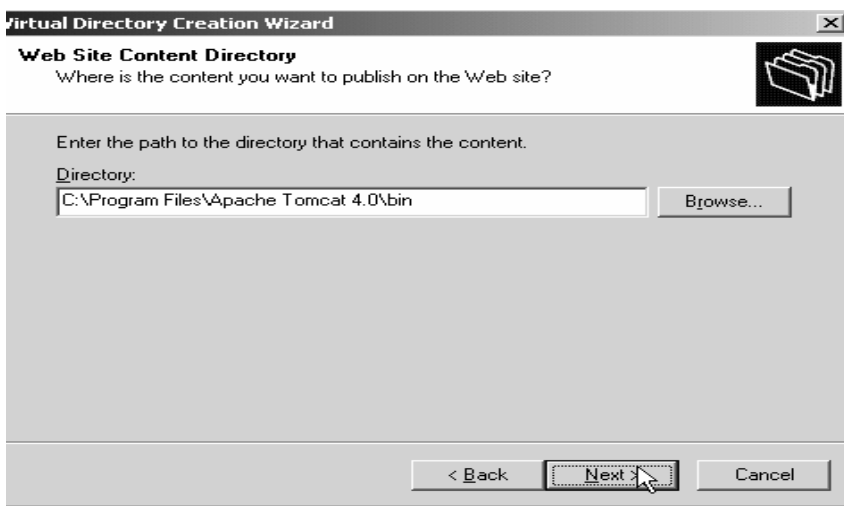


Figure 4 - Directory path to the isapi\_redirector.dll file

10. Ensure that the **Read** and **Execute** checkboxes are selected as shown in Figure 5. Click **Finish**.



Figure 5 - Access permission settings

## Adding the ISAPI filter

To add the ISAPI filter:

1. Right-click **Default Web Site** and select **Properties**.
2. Click the ISAPI Filters page.
3. Click **Add**. The Filter Properties window opens.
4. Enter `jakarta` in the **Filter Name** field as shown in Figure 6. The new filter name must be `jakarta`.

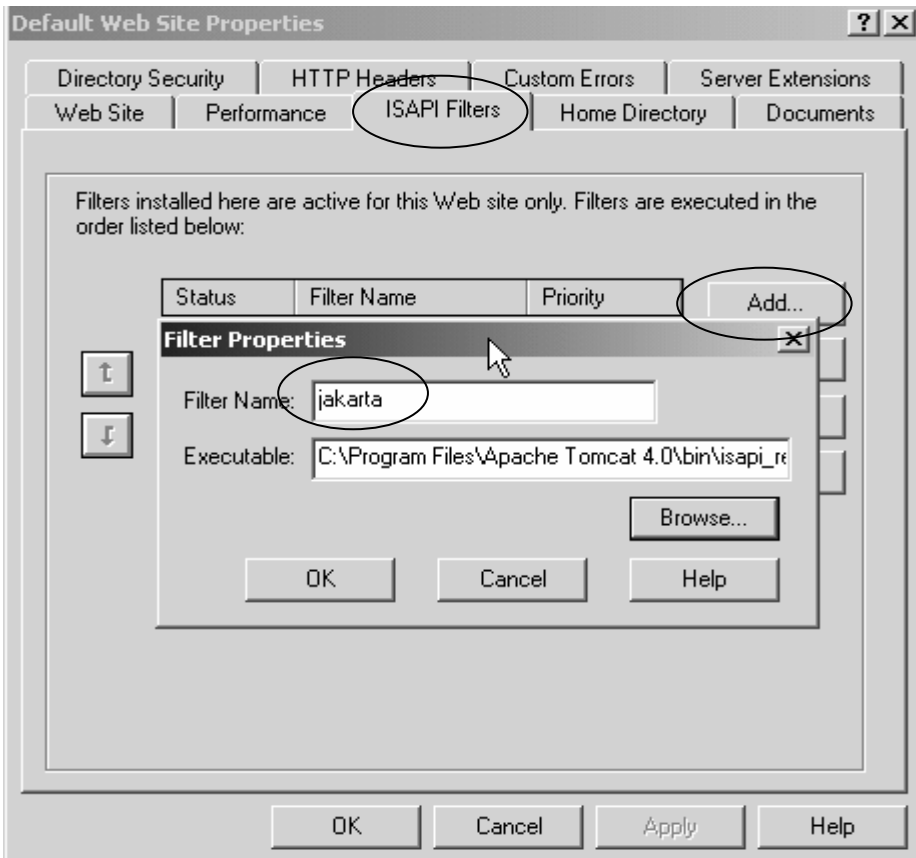


Figure 6 - ISAPI Filters page

5. Enter the path to the directory that contains the isapi\_redirector.dll file. The default path is: C:\CATALINA\_HOME\bin as shown in Figure 4. Click **OK**.
6. On the main page, click **Apply** and then click **OK**.
7. Start IIS again.
8. Open the ISAPI Filters page of the Default Web Site Properties window again. Ensure that the jakarta filter has a green arrow in the status column as shown in Figure 7. If the status column does not contain a green arrow, a configuration error might have occurred.
9. To test that the filter works, open the following URL in a Web browser:  
http://hostname/examples/jsp/dates/date.jsp.

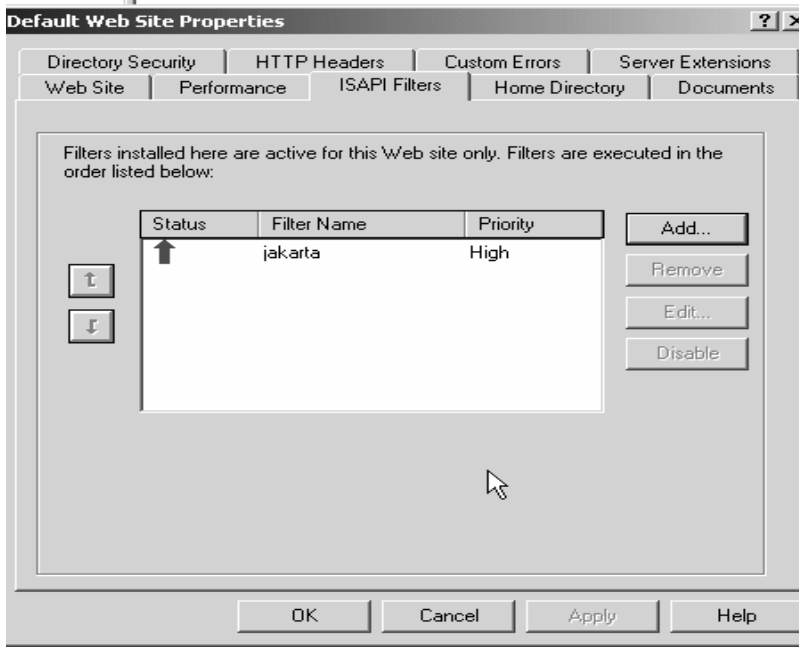


Figure 7 - Updated ISAPI Filters page

## Editing uriworkermap.properties

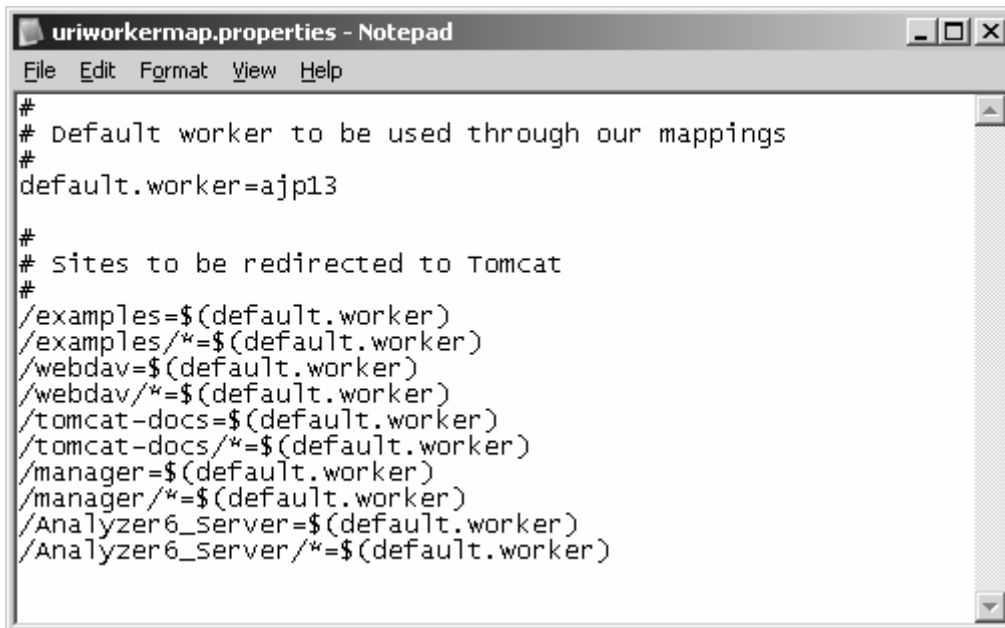
To define the correct directory to the ISAPI redirector, you need to modify the uriworkermap.properties file. A modified version of the uriworkermap.properties file is included in the iis\_tomcat.zip file. It has been modified to specify the correct values for the two values that need to be added. **Error! Reference source not found.** shows the portion of the workers.properties file that includes the two additional values.

If you did not install IIS or Tomcat in the default directories, you need to edit the workers.properties file by completing the following steps so that the values correspond to your custom installation paths:

4. In a text editor, open the uriworkermap.properties file.
5. Add the following two values to the list of sites to be redirected to Tomcat, where Analyzer6\_Server corresponds to the context root that was used when Analyzer was installed:

```
/Analyzer6_Server=$(default.worker)  
/Analyzer6_Server/*=$(default.worker)
```

6. Save the uriworkermap.properties file.



```
uriworkermap.properties - Notepad
File Edit Format View Help
#
# default worker to be used through our mappings
#
default.worker=ajp13
#
# sites to be redirected to Tomcat
#
/examples=$(default.worker)
/examples/*=$(default.worker)
/webdav=$(default.worker)
/webdav/*=$(default.worker)
/tomcat-docs=$(default.worker)
/tomcat-docs/*=$(default.worker)
/manager=$(default.worker)
/manager/*=$(default.worker)
/Analyzer6_Server=$(default.worker)
/Analyzer6_Server/*=$(default.worker)
```

**Figure 8 - Modified uriworkermap.properties file**

After editing the original uriworkermap.properties file or replacing the original file with the modified file provided in the iis\_tomcat.zip file, complete the following steps:

1. Start the IIS Service again to reload the ISAPI redirector.
2. Open the following URL in a Web browser: [http://hostname/Analyzer6\\_Server/index.html](http://hostname/Analyzer6_Server/index.html).