

# Installing FixPak 2 for DB2 OLAP Server Analyzer, V8.1 -- Refreshed

This document explains each field of the Installation program to upgrade to FixPak 2 for Analyzer, V8.1 – Refreshed. The installation pages are similar on both the Windows and UNIX platforms. This document explains how to upgrade the Analyzer server. The following two installation pages are not included when installing the Windows client:

- Select Application Server page
- Configure Application Server page

## Language page

Select a language as shown in Figure 1 and click **Next**.

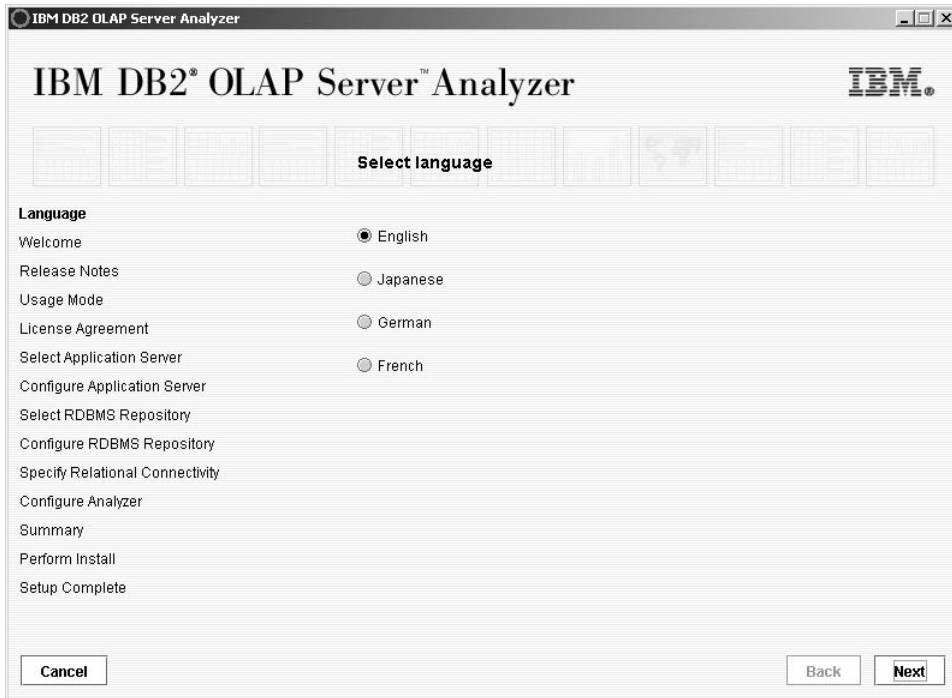


Figure 1 – Language page

## Welcome page

Click **Next** to continue to the next page as shown in Figure 2.

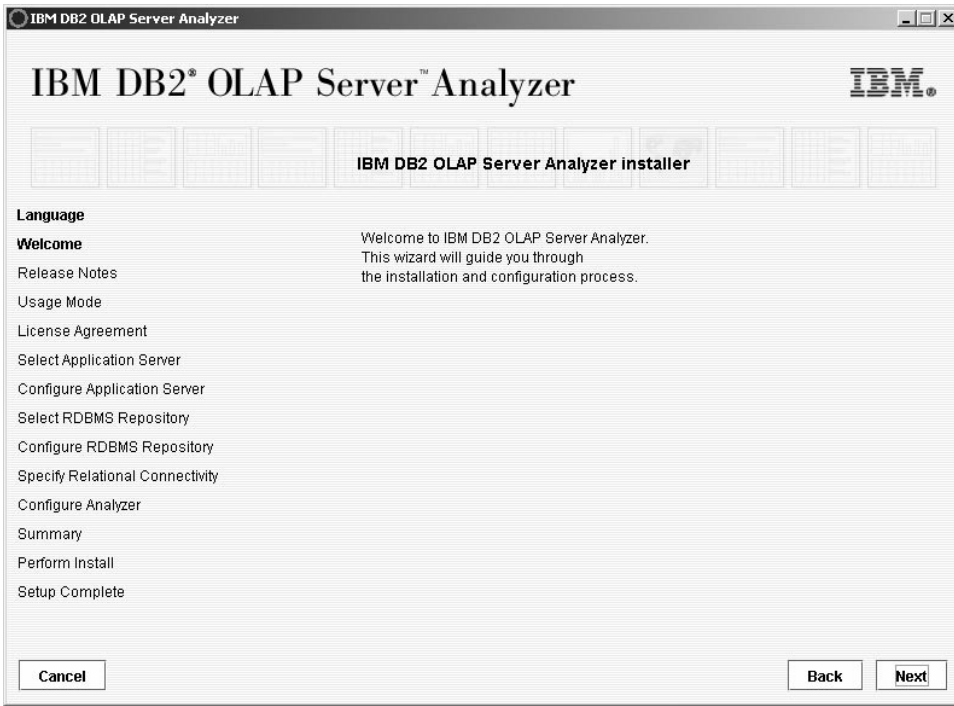


Figure 2 – Welcome page

## Release Notes page

Read the Release Notes which contain important information about installing the fix pack. You can view the release notes by opening the readme.txt file included in FixPak 2.

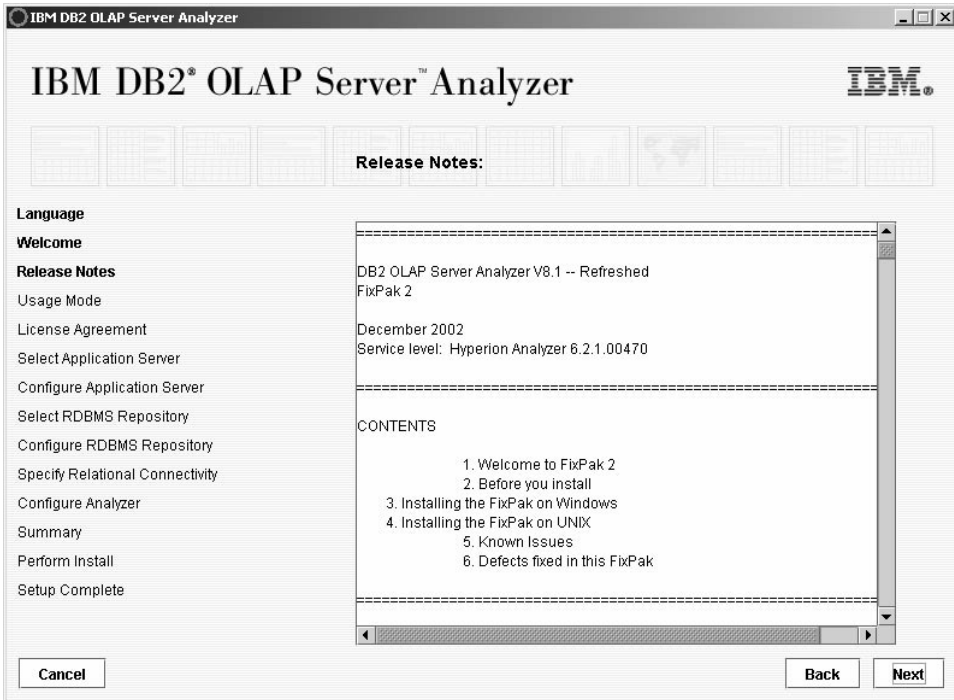


Figure 3 – Release Notes page

## Usage Mode page – license information

Enter the number of users that you purchased a DB2 OLAP Server license for. The default value is 20 users as shown in

Figure 4.

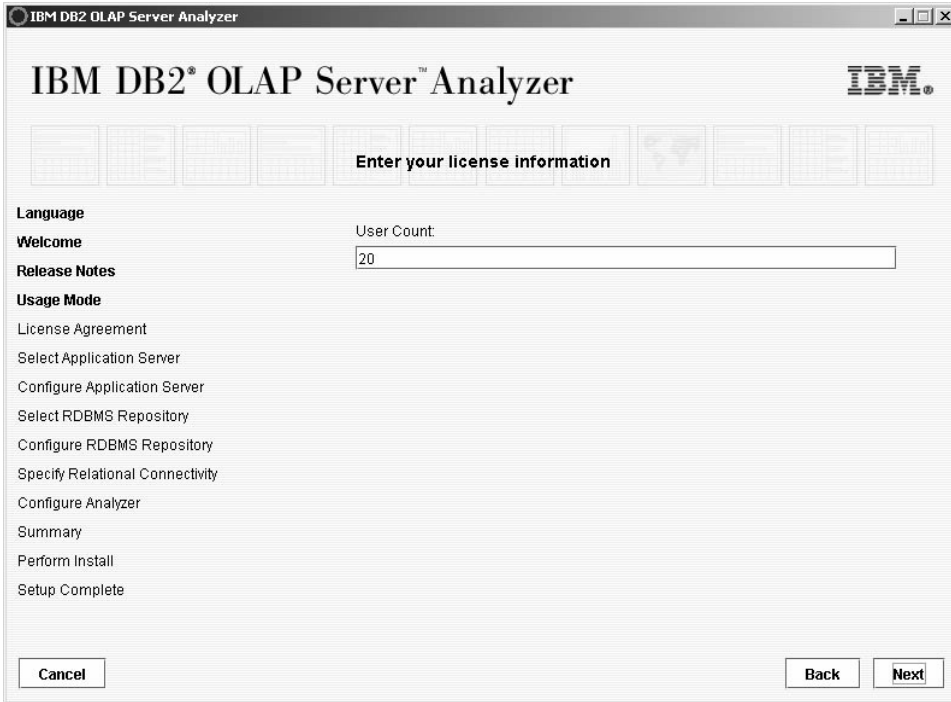


Figure 4 – Usage Mode page – license information

### Usage Mode page – setup type

The Analyzer Windows Client and Analyzer Server are installed separately. Select one of the following options:

- **Windows Client** to install the Analyzer Windows Client.
- **Enterprise Edition** to install the Analyzer Server. For this document, Enterprise Edition is selected.

This document continues with the installation for Analyzer Server as shown in Figure 5.

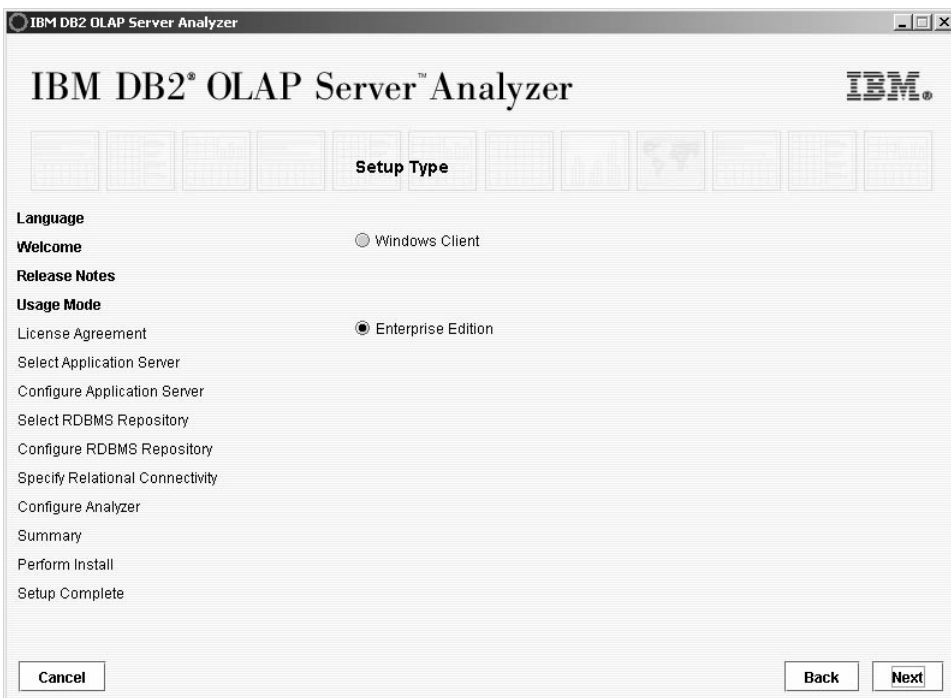


Figure 5 – Usage Mode page – setup type

## License Agreement page

Read the license agreement and select one of the following options:

- **I Disagree**  
A message will appear asking if you want to quit the installation. You must agree with the terms of the license agreement to continue with the installation. Click **OK** button to close the message window. Select **I Agree** or click **Cancel** to close the installation program.
- **I Agree**  
By selecting **I Agree**, you are agreeing to the terms of the License Agreement. Click **Next** to continue with the installation.

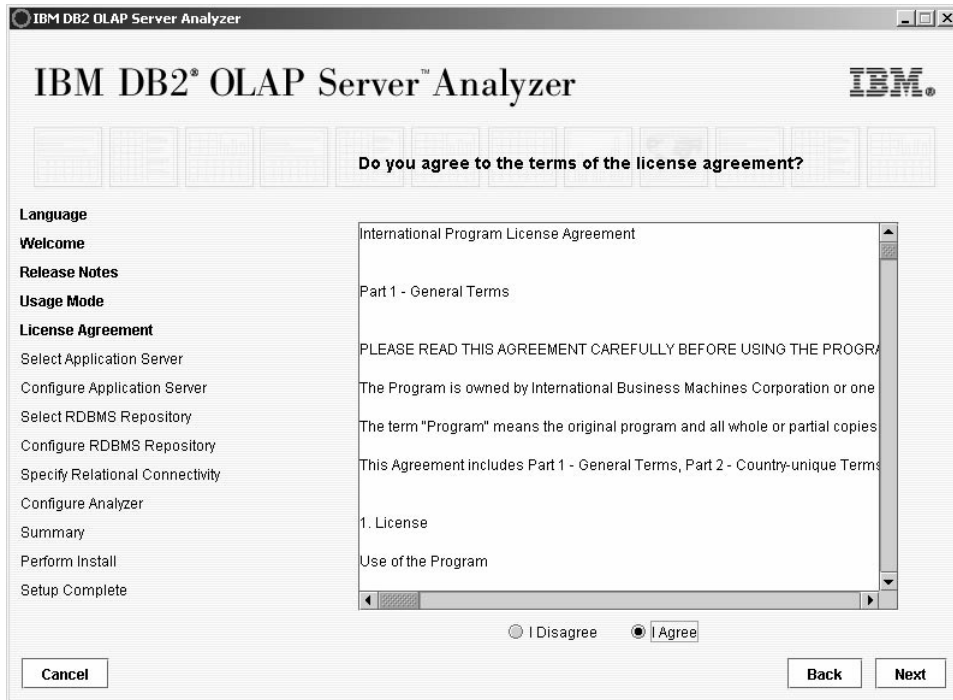


Figure 6 – License Agreement page

## Select Application Server page

Select the application server that you are currently using. The application server must be installed before you install Analyzer. For this example, Tomcat 4.0.4 is the application server type, as shown in Figure 7. Click **Next**.

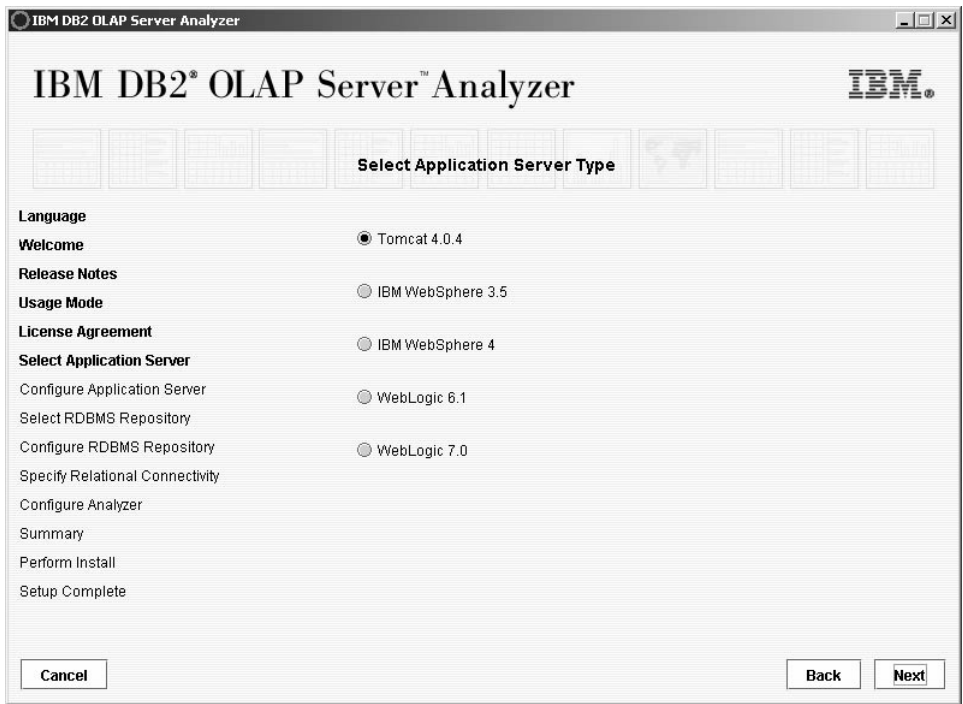


Figure 7 – Select Application Server page

## Configure Application Server page

Complete the following steps:

1. In the **Application Server Location** field, enter the installation path for your application server.
2. In the **HTTP Port Addr** field, enter the port number that your application server uses for HTTP protocol

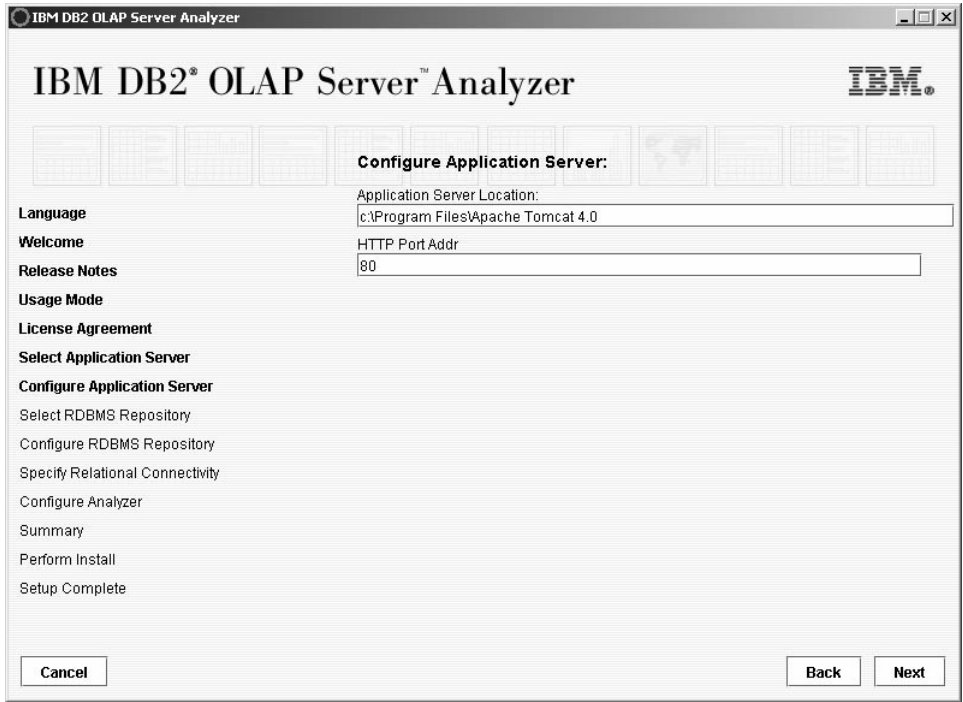


Figure 8 – Configure Application Server page

## Select RDBMS Repository page

Select the type of relational database that you are using. The relational database must be installed before you install Analyzer.

For each of three database type options, you can select one, both, or none of the following:

- **Create Database**  
Creates the database for Analyzer. The default name for the database in FixPak 2 is ANALYZ62. The default name of the database that was installed with the base code is ANALYZ60.
- **Create Repository**  
Creates the necessary tables and default data in the ANALYZ62 database that Analyzer needs.

If you select **DB2 7.2** as your database type:

- Create the database for the Analyzer repository in DB2 before installing FixPak 2. If you are installing the Analyzer repository into a new database, select **Create Database**.
- If you are using an existing Analyzer repository from the base installation, ensure that **Create Database** and **Create Repository** are not selected.

If you select **Oracle (8.1.7 or 9i)** as your database type:

- If you select **Create Repository**, do not create the table space or repository yourself.
- If you are using an existing Analyzer repository from the base installation, ensure that **Create Database** and **Create Repository** are not selected.

For this example, **SQL Server 2000** is selected and an existing Analyzer repository is being used from the base installation. The **Create Database** and **Create Repository** options are not selected, as shown in Figure 9.

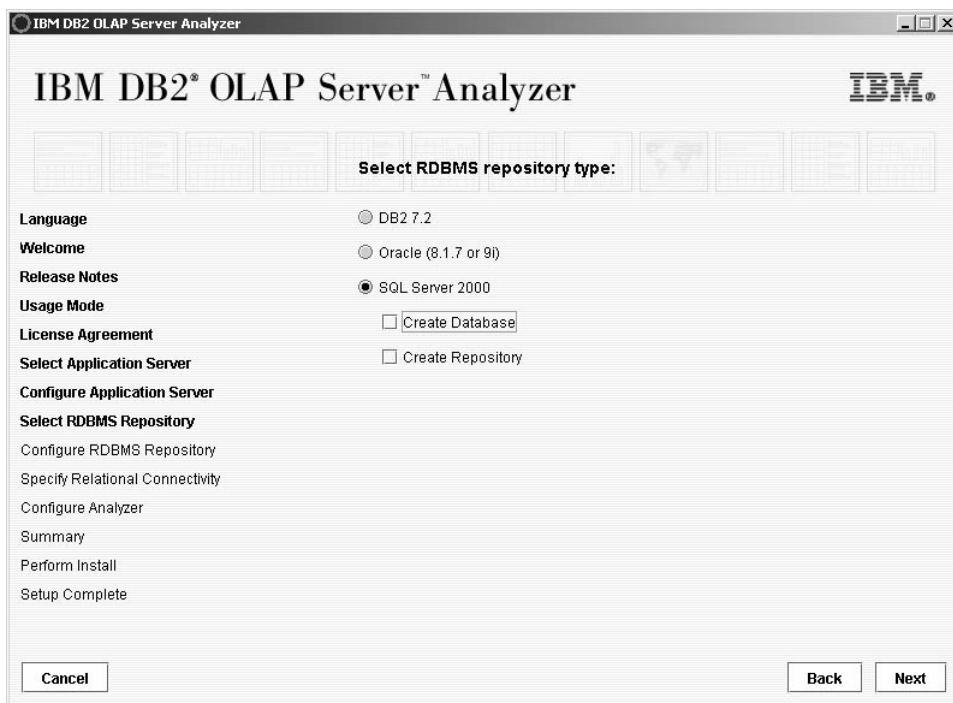


Figure 9 – Select RDBMS repository type

## Configure RDBMS Repository page

For this example using SQL Server 2000 and an existing Analyzer repository from the base installation, the settings are shown in Figure 10. Complete the following steps:

1. In the **MSSQL Server** field, enter the server name that SQL Server is installed on. Do not enter `localhost`.
2. In the **SQL Server Database Name** field, change the default database name from ANALYZ62 to ANALYZ60. ANALYZ60 is the default name of the existing database that was installed with the base code.
3. In the **JDBC Driver Path** field, click on the ... button to browse the file system. Select the path in which the JDBC

driver file is located.

- For SQL Server 2000, the JDBC driver file is called `mssqlserver.jar`.
- For DB2 7.2, the JDBC driver file is called `db2java.zip`.
- For Oracle (8.1.7 or 9i), the JDBC driver file is called `classes12.jar`.

If you selected both **Create Database** and **Create Repository** on the **Select RDBMS Repository** page, then the **Configure RDBMS Repository** page will require you enter more information. Some additional required information includes:

- For DB2 7.2, enter the actual administrator name for DB2, such as `db2admin` or `db2inst1`, in the **Administrator Name** field.
- For Oracle (8.1.7 or 9i), enter the Oracle SID that the Analyzer table space will be installed into.
- For SQL Server 2000, ensure that the password for the `sa` user is set within SQL Server, and that the same `sa` user and password exist in the operating system.

IBM DB2 OLAP Server Analyzer

# IBM DB2® OLAP Server™ Analyzer

Enter SQL Server 2000 connection information:

MSSQL Server:

SQL Server Database Name:

JDBC Driver Path: (e., mssqlserver.jar)  ...

Cancel Back Next

Figure 10 – Configure RDBMS Repository page

## Specify Relational Connectivity page

Specify any additional relational connections that might be needed by selecting one of the following options:

- **DB2 Enterprise**  
Select this option if additional relational connections to DB2 are needed. If selected, browse to where the JDBC driver, called `db2java.zip` is located. The default path is: `C:\Program Files\SQLLIB\java`.
- **Oracle**  
Select this option if additional relational connections to Oracle are needed. If selected, browse to where the JDBC driver, called file `classes12.jar` is located. The default path is: `C:\<Oracle_home>\jdbc\lib`.
- **MS SQL Server 2000**  
For this example, the **MS SQL Server 2000** option is not available because it is already selected as the primary RDBMS repository type and the JDBC driver information has been provided.

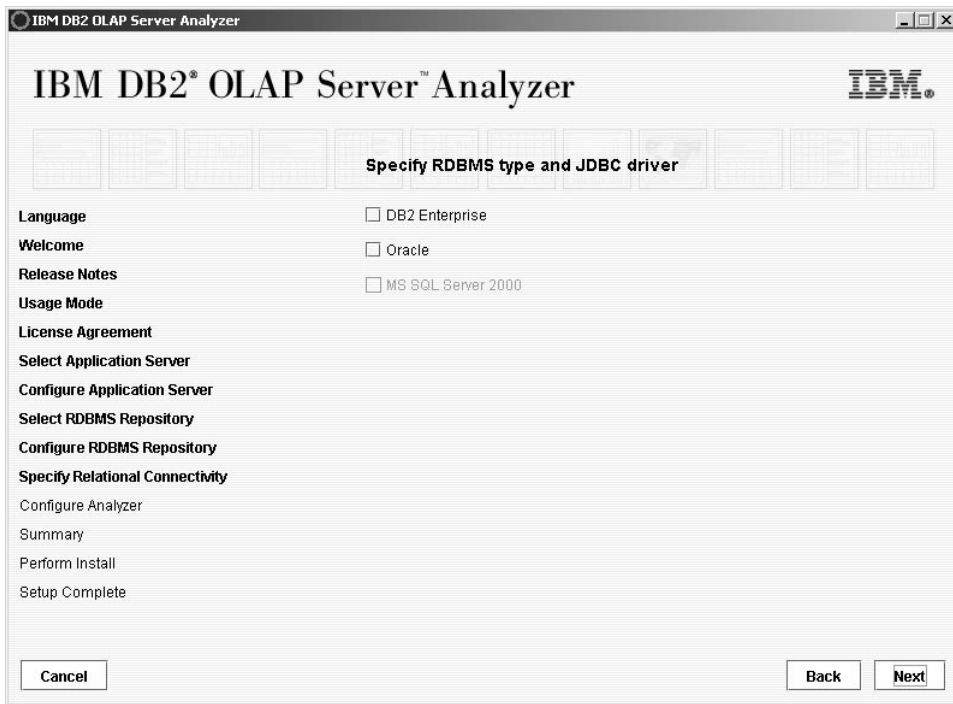


Figure 11 – Specify Relational Connectivity page

## Configure Analyzer page

Complete the following steps, to complete the information shown in Figure 12:

1. In the **Destination Folder** field, enter the path where you want Analyzer to be installed.
2. In the **Servlet Engine Name** field, enter a name for the Analyzer servlet engine.
3. In the **RDBMS Repository Username** field, enter a user for the Analyzer database that can access the database. The provided username must match the username used in the base code installation and is limited to 8 characters in length. The table schema name will match the username that is provided.
4. In the **RDBMS Repository Password** field, enter the password for the RDBMS username provided above. The password must match the password that is used for this username in base code installation.
5. Click **Next**.

**Note:** The RDBMS username and password fields are not automatically populated. You must enter the correct information that matches what was used in the previous installation of Analyzer. On Windows, Analyzer will automatically create the user in the operating system. On UNIX, you must manually create the user in the operating system before you install Analyzer.



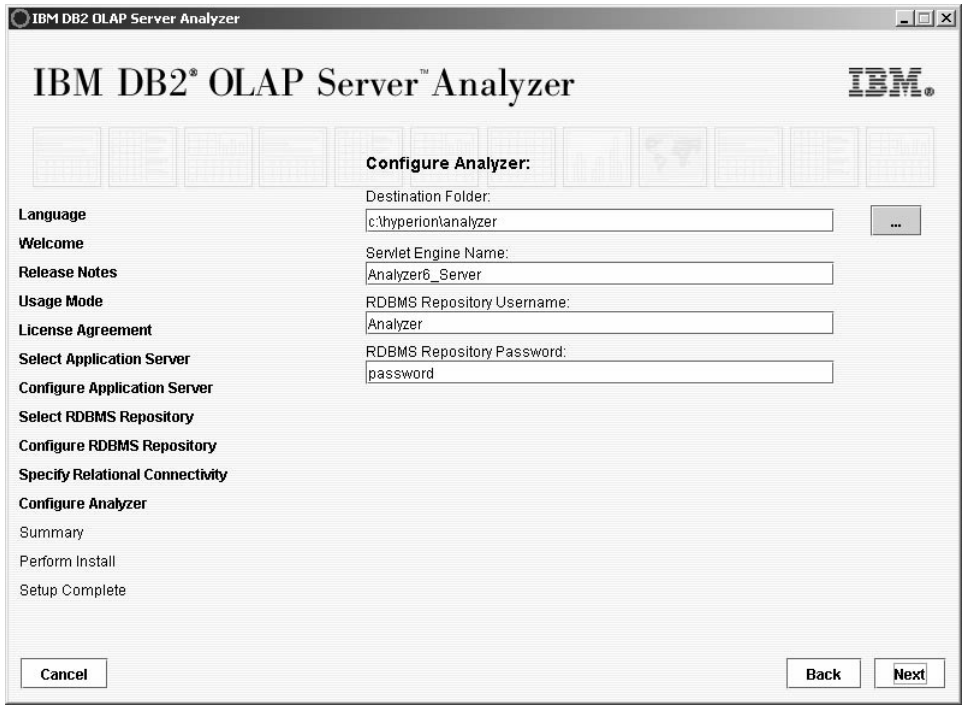


Figure 12 – Configure Analyzer page

## Summary page

Ensure that the options you chose, as shown in Figure 13 are correct. Click **Next** to start installing Analyzer.

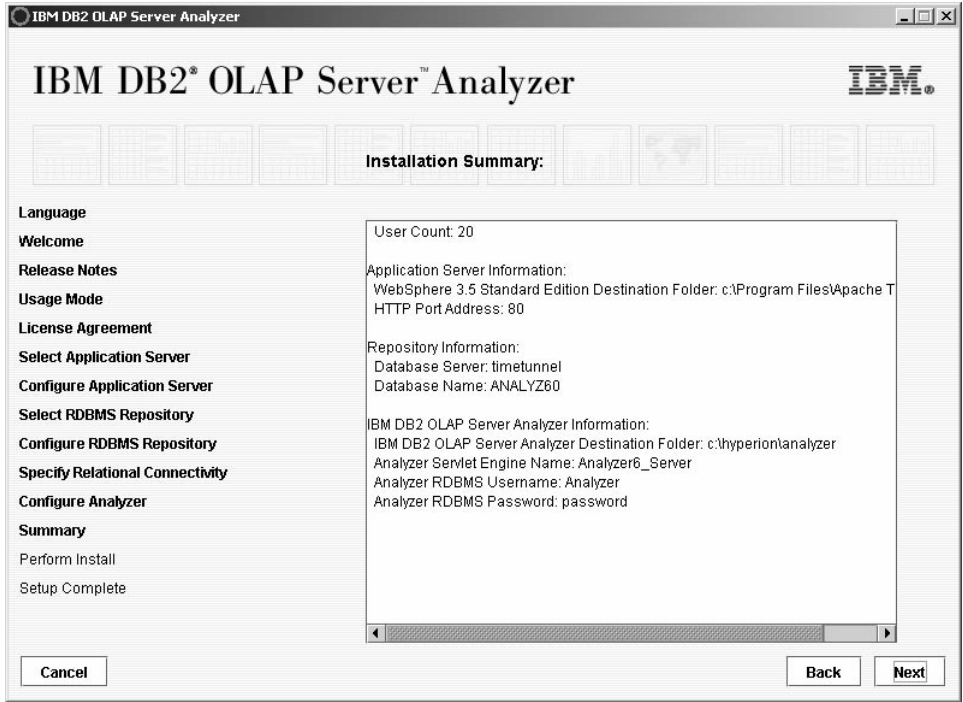


Figure 13 – Summary page