

IBM DB2 Cube Views



# Bridge for Integration Server User's Guide

*Version 8*



IBM DB2 Cube Views



# Bridge for Integration Server User's Guide

*Version 8*

**Note**

Before using this information and the product it supports, be sure to read the information in “Notices” on page 11.

**First Edition (June 2003)**

This edition applies to Version 8.1 of DB2 Cube Views bridge for Integration Server (program number 5724-E15) and to all subsequent releases and modifications until otherwise indicated in new editions.

Portions of this manual Copyright © 2003 SPSS Inc. All Rights Reserved.

© **Copyright International Business Machines Corporation 2003. All rights reserved.**

US Government Users Restricted Rights – Use, duplication or disclosure restricted by GSA ADP Schedule Contract with IBM Corp.

---

## Contents

<b>Introduction . . . . .</b>	<b>1</b>
Prerequisites . . . . .	1
<b>What is the bridge for Integration Server</b>	<b>3</b>
<b>Mapping and importing metadata. . . . .</b>	<b>5</b>
<b>Exporting metadata. . . . .</b>	<b>9</b>

<b>Notices . . . . .</b>	<b>11</b>
Trademarks . . . . .	12
<b>Contacting IBM . . . . .</b>	<b>15</b>
Product Information . . . . .	15



---

## Introduction

The bridge helps you import or export metadata objects to and from the IBM® DB2 Universal Database™ (DB2® UDB) catalog and the DB2 OLAP Integration Server add-on feature of IBM DB2 OLAP Server™ or Hyperion® Essbase® Integration Services™. To complete the import or export process, you use the OLAP Center in DB2 Cube Views.

In this book, DB2 OLAP Integration Server and Hyperion Integration Services are referred to as *Integration Server*.

To use the the bridge for Integration Server, you need the following additional documentation:

- DB2 Cube Views, Version 8.1 *Setup and User's Guide*
- Relevant information for the DB2 Universal Database, Version 8.1.2 catalog
- Relevant information for IBM DB2 OLAP Integration Server, Version 8.1 or Hyperion Integration Services 6.5

To exchange metadata objects between Integration Server and the DB2 UDB catalog, you should know how to create Integration Server models and metaoutlines and be familiar with the DB2 UDB catalog tables. You should also know how to use the OLAP Center in DB2 Cube Views to import or export metadata XML files to and from Integration Server and DB2 UDB.

---

## Prerequisites

You must have the following software to use the bridge for Integration Server:

- Windows NT®, Windows® 2000, and Windows XP
- IBM DB2 Universal Database, Version 8.1.2 or later
- DB2 OLAP Server, Version 8.1 (with DB2 OLAP Integration Server) or Hyperion Essbase Integration Services 6.5





---

## What is the bridge for Integration Server

DB2 Cube Views provides a utility called a bridge that maps Integration Server model or metaoutline objects to their corresponding DB2 Cube Views metadata objects. The bridge creates an XML file that creates mapped associations between Integration Server metadata objects and DB2 Cube Views metadata objects. You can use the bridge XML file to import model or metaoutline objects to the DB2 UDB catalog via DB2 Cube Views. See the Integration Server documentation for information about importing and exporting models or metaoutlines as XML files.

After you use the bridge to create an XML file, use the OLAP Center in DB2 Cube Views to import the XML file to the DB2 UDB catalog. After you populate the DB2 UDB catalog with metadata objects, you can view the metadata objects by using the OLAP Center interface. See the DB2 Cube Views *Setup and User's Guide* for more information about how to use the OLAP Center.

You can also export DB2 Cube Views metadata objects from the DB2 UDB catalog to Integration Server. With the OLAP Center, you can export an XML file that is then read by the bridge. The bridge maps the metadata objects from the DB2 UDB catalog to model or metaoutline metadata objects.

Figure 1 on page 4 shows how metadata is imported or exported between Integration Server and the DB2 UDB catalog.

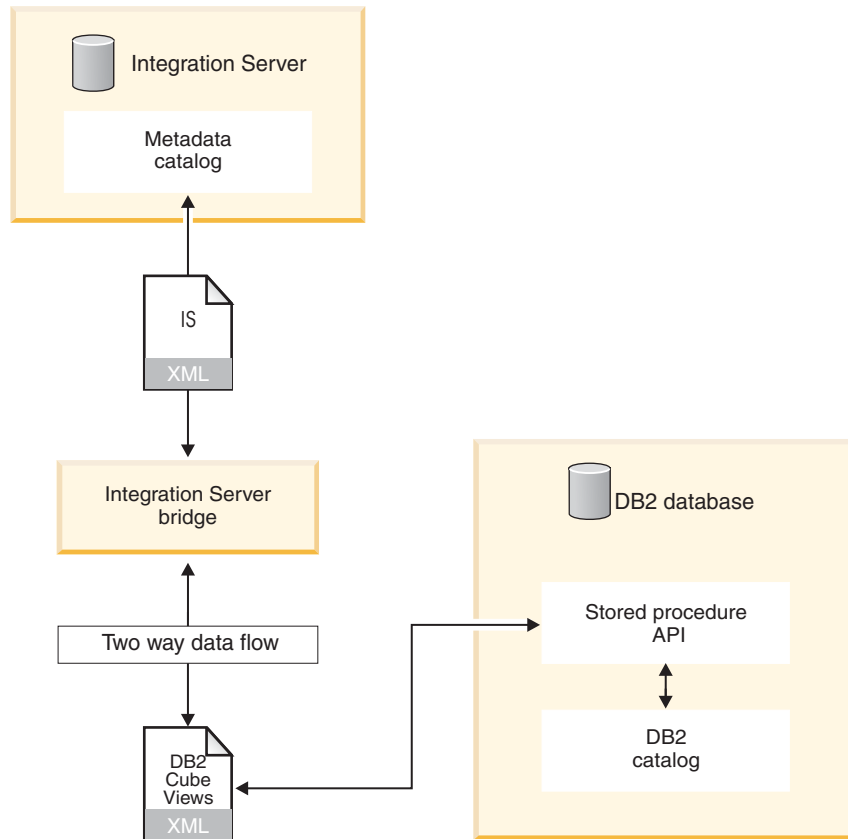


Figure 1. How the bridge helps to import or export metadata

You can use the XML file that is created by the bridge to import (exported from the DB2 UDB catalog) the metadata objects to Integration Server. See the Integration Server documentation for information about importing XML files to Integration Server.

---

## Mapping and importing metadata

With the bridge, you can create an XML file that the OLAP Center Import wizard uses to import metadata objects from Integration Server to the DB2 UDB catalog. Before you use the bridge, you must export your models or metaoutlines to an XML file. The bridge then maps the Integration Server metadata objects to DB2 Cube Views metadata objects.

The following table shows how Integration Server metadata objects map to DB2 Cube Views metadata objects.

*Table 1. How Integration Server objects map to DB2 Cube Views objects*

Integration Server object	DB2 Cube Views object
Model	Cube model
Fact	Facts
Numeric member of fact	Measure
Dimension	Dimension
Dimension view member	Attribute
Hierarchy	Hierarchy
Join (logical and physical)	Join
Metaoutline	Cube
Nonaccounts dimension	Cube dimension
Accounts dimension	Cube facts
Metaoutline dimension hierarchy	Cube hierarchy

Mapping and importing metadata from Integration Server to DB2 UDB is a three-step process:

1. With Integration Server, export the model or metaoutline as an XML file.
2. Map the Integration Server OLAP objects to their corresponding DB2 Cube Views metadata objects.

Use the bridge to create a DB2 Cube Views XML file that maps Integration Server metadata objects to DB2 Cube Views metadata objects.

3. Import the DB2 Cube Views metadata objects to the DB2 UDB catalog.  
Use the Import wizard in the OLAP Center to import the XML file to the DB2 UDB catalog.

### **Restrictions:**

If you map a metaoutline, you must also map its model.

The bridge cannot map the following Integration Server metadata objects to DB2 Cube Views metadata objects:

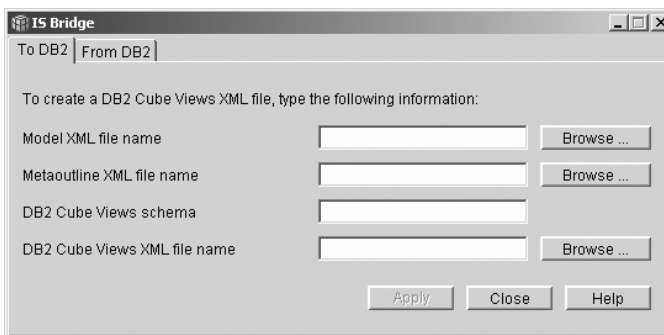
- Members that have the PASSTHRU expression or formula
- Hidden members that are not used in joins
- Metaoutline dimension members that are below outline and Hybrid Analysis levels

- Measures that do not reference other measures and do not specify an aggregation type or specify NONE for the aggregation
- Measures that are used in a join
- Implicit measures
- Joins that are used to define recursive hierarchies
- User-defined dimensions and members
- Attribute dimensions
- Hierarchies and metaoutline dimensions in which none of the members are mapped

**Procedure:**

To map Integration Server metadata objects to a DB2 Cube Views metadata objects:

1. Start the bridge by double-clicking the `isbridge.bat` file in the `SQLLIB\BIN` directory or by typing `isbridge` from a command prompt.
2. Click the **To DB2** tab.



3. Type or browse for the following files and information:
  - a. Model XML file name: The XML file that is generated by the Integration Server for a model
  - b. Optional: Metaoutline XML file name: The XML file that is generated by the Integration Server for a metaoutline
  - c. DB2 Cube Views Schema name: The schema name that is used for all DB2 Cube Views objects that are generated by the bridge
  - d. DB2 Cube Views XML file name: The XML file that is generated by the bridge
4. Click **Apply**.

To start the bridge from a command line and import a model or a model with a metaoutline, enter the following command on one line:

```
ISBridge -Model model XML file [-Metaoutline metaoutline XML file]  
-OutFile output XML file -OLAPSchema schema name  
[-Log Yes|No]
```

See step 3 in the previous section for a description of each file. Output XML file is the DB2 Cube Views XML file name.

If you enter Yes for the log command, the bridge creates a log file. The default is No.

Now you can use the OLAP Center in DB2 Cube Views to import the new XML file to the DB2 UDB catalog. See the *DB2 Cube Views Setup and User's Guide* for information about how to import XML files.



---

## Exporting metadata

You can export DB2 Cube Views metadata objects to Integration Server by using the bridge. The bridge creates an XML file that you can import to Integration Server.

### Restrictions:

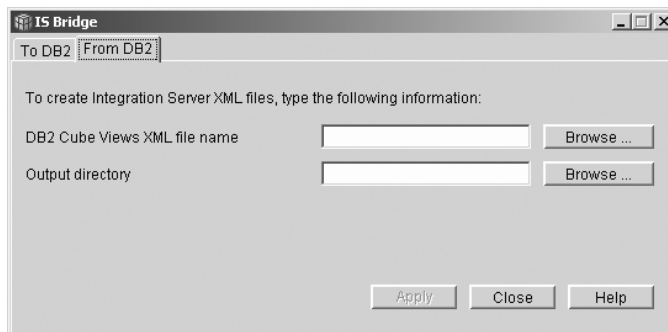
The bridge cannot map the following DB2 Cube Views metadata objects to Integration Server metadata objects:

- Attributes, measures, dimensions, or hierarchies that are not used in a cube model
- Measures whose aggregation is not one of the following types: SUM, AVG, MAX, MIN, COUNT, NONE
- Measures that have multiple aggregations
- Measures that do not have aggregations and whose expressions do not allow the construction of a measure hierarchy in a metaoutline accounts dimension
- Attributes and measures that reference unmapped objects
- Joins that form a loop
- Joins whose type is not inner, or the operator is not =, or the cardinality is n:m
- Joins that do not link relational columns
- Hierarchies whose type is not balanced or whose deployment is not standard
- Dimensions whose facts-to-dimension join is not mapped
- Cube hierarchies that reference unmapped hierarchies
- Cube dimensions that reference either unmapped dimensions or unmapped hierarchies
- Attribute relationships

### Procedure:

To export DB2 Cube Views metadata objects to Integration Server:

1. Start the bridge by double-clicking the `isbridge.bat` file in the `SQLLIB\BIN` directory or by typing `isbridge` from a command prompt.
2. Click the **From DB2** tab.



3. Type or browse for the following files and information:
  - a. DB2 Cube Views XML file: The XML file that is generated by DB2 Cube Views

b. Output directory: The location where the output model and metaoutline are stored

4. Click **Apply**.

To export metadata from DB2 Cube Views to Integration Server from a command line, enter the following command on one line:

```
ISBridge -DB2MetadataFile DB2 Cube Views XML file  
-outDirectory output directory [-Log Yes|No]
```

See step 3 in the previous section for a description of each file.

If you enter Yes for the log command, the bridge creates a log file. The default is No.

Now you can import the new XML file to Integration Server. See the Integration Server documentation for information about how to import model and metaoutline XML files.



---

## Notices

This information was developed for products and services offered in the U.S.A.

IBM may not offer the products, services, or features discussed in this document in other countries. Consult your local IBM representative for information on the products and services currently available in your area. Any reference to an IBM product, program, or service is not intended to state or imply that only that IBM product, program, or service may be used. Any functionally equivalent product, program, or service that does not infringe any IBM intellectual property right may be used instead. However, it is the user's responsibility to evaluate and verify the operation of any non-IBM product, program, or service.

IBM may have patents or pending patent applications covering subject matter described in this document. The furnishing of this document does not give you any license to these patents. You can send license inquiries, in writing, to:

IBM Director of Licensing  
IBM Corporation  
North Castle Drive  
Armonk, NY 10504-1785  
U.S.A.

For license inquiries regarding double-byte (DBCS) information, contact the IBM Intellectual Property Department in your country or send inquiries, in writing, to:

IBM World Trade Asia Corporation  
Licensing  
2-31 Roppongi 3-chome, Minato-ku  
Tokyo 106, Japan

**The following paragraph does not apply to the United Kingdom or any other country where such provisions are inconsistent with local law:**

INTERNATIONAL BUSINESS MACHINES CORPORATION PROVIDES THIS PUBLICATION "AS IS" WITHOUT WARRANTY OF ANY KIND, EITHER EXPRESS OR IMPLIED, INCLUDING, BUT NOT LIMITED TO, THE IMPLIED WARRANTIES OF NON-INFRINGEMENT, MERCHANTABILITY OR FITNESS FOR A PARTICULAR PURPOSE. Some states do not allow disclaimer of express or implied warranties in certain transactions, therefore, this statement may not apply to you.

This information could include technical inaccuracies or typographical errors. Changes are periodically made to the information herein; these changes will be incorporated in new editions of the publication. IBM may make improvements and/or changes in the product(s) and/or the program(s) described in this publication at any time without notice.

IBM may use or distribute any of the information you supply in any way it believes appropriate without incurring any obligation to you.

Licensees of this program who wish to have information about it for the purpose of enabling: (i) the exchange of information between independently created programs and other programs (including this one) and (ii) the mutual use of the information which has been exchanged, should contact:

IBM Corporation  
J46A/G4  
555 Bailey Avenue  
San Jose, CA 95141-1003  
U.S.A.

Such information may be available, subject to appropriate terms and conditions, including in some cases, payment of a fee.

The licensed program described in this information and all licensed material available for it are provided by IBM under terms of the IBM Customer Agreement, IBM International Program License Agreement, or any equivalent agreement between us.

Information concerning non-IBM products was obtained from the suppliers of those products, their published announcements or other publicly available sources. IBM has not tested those products and cannot confirm the accuracy of performance, compatibility or any other claims related to non-IBM products. Questions on the capabilities of non-IBM products should be addressed to the suppliers of those products.

This information contains examples of data and reports used in daily business operations. To illustrate them as completely as possible, the examples include the names of individuals, companies, brands, and products. All of these names are fictitious and any similarity to the names and addresses used by an actual business enterprise is entirely coincidental.

Any performance data contained herein was determined in a controlled environment. Therefore, the results obtained in other operating environments may vary significantly. Some measurements may have been made on development-level systems and there is no guarantee that these measurements will be the same on generally available systems. Furthermore, some measurement may have been estimated through extrapolation. Actual results may vary. Users of this document should verify the applicable data for their specific environment.

Information concerning non-IBM products was obtained from the suppliers of those products, their published announcements or other publicly available sources. IBM has not tested those products and cannot confirm the accuracy of performance, compatibility or any other claims related to non-IBM products. Questions on the capabilities of non-IBM products should be addressed to the suppliers of those products.

If you are viewing this information softcopy, the photographs and color illustrations may not appear.

---

## Trademarks

The following terms are trademarks of International Business Machines Corporation in the United States, other countries, or both:

DB2 Universal Database  
DB2 OLAP Server  
IBM

The following terms are trademarks or registered trademarks of other companies:

Lotus and 1-2-3 are trademarks of Lotus Development Corporation in the United States, other countries, or both.

Microsoft, Windows, Windows NT, Windows 2000, Windows XP, and Microsoft Excel are trademarks or registered trademarks of Microsoft Corporation.

Hyperion Essbase Integration Services is a registered trademark in the United States, other countries or both.

Other company, product, or service names may be trademarks or service marks of others.



---

## Contacting IBM

If you have a technical problem, please review and carry out the actions suggested by the product documentation before contacting DB2 UDB Customer Support. This guide suggests information that you can gather to help DB2 UDB Customer Support to serve you better.

For information or to order any of the DB2 UDB products, contact an IBM representative at a local branch office or contact any authorized IBM software remarketer.

If you live in the U.S.A., you can call one of the following numbers:

- 1-800-237-5511 for customer support
- 1-888-426-4343 to learn about available service options

---

## Product Information

If you live in the U.S.A., then you can call one of the following numbers:

- 1-800-IBM-CALL (1-800-426-2255) or 1-800-3IBM-OS2 (1-800-342-6672) to order products or get general information.
- 1-800-879-2755 to order publications.

**<http://www.ibm.com/software/data/db2/db2md/>**

Provides links to information about DB2 Cube Views.

**<http://www.ibm.com/software/data/support/>**

Provides links to technical support for IBM DB2 information management software products.

**[http://www.elink.ibm.com/public/applications/](http://www.elink.ibm.com/public/applications/publications/cgibin/pbi.cgi)**

**[publications/cgibin/pbi.cgi](http://www.elink.ibm.com/public/applications/publications/cgibin/pbi.cgi)** The International Publications ordering Web site provides information about how to order books.

**<http://www.ibm.com/education/certify/>**

The Professional Certification Program from the IBM Web site provides certification test information for a variety of IBM products.

**Note:** In some countries, IBM-authorized dealers should contact their dealer support structure instead of the IBM Support Center.







Program Number: 5724-E15

Printed in USA

SC18-7300-00

