

IBM DB2 Universal Database
Personal Edition



Quick Beginnings

Version 6

IBM DB2 Universal Database
Personal Edition



Quick Beginnings

Version 6

Before using this information and the product it supports, be sure to read the general information under "Appendix G. Notices" on page 93.

This document contains proprietary information of IBM. It is provided under a license agreement and is protected by copyright law. The information contained in this publication does not include any product warranties, and any statements provided in this manual should not be interpreted as such.

Order publications through your IBM representative or the IBM branch office serving your locality or by calling 1-800-879-2755 in the United States or 1-800-IBM-4YOU in Canada.

When you send information to IBM, you grant IBM a nonexclusive right to use or distribute the information in any way it believes appropriate without incurring any obligation to you.

© **Copyright International Business Machines Corporation 1993, 1999. All rights reserved.**

US Government Users Restricted Rights – Use duplication or disclosure restricted by GSA ADP Schedule Contract with IBM Corp.

Contents

Welcome to DB2 Universal Database!	v	
Conventions	v	
<hr/>		
Part 1. Installing DB2 Personal Edition	1	
<hr/>		
Chapter 1. Planning for Installation	3	
Memory Requirements	3	
DB2 Universal Database Requirements	3	
Disk Requirements	4	
Estimating Fixed Disk Requirements	4	
Software Requirements.	4	
Product Requirements	5	
Possible Client-to-Server Connectivity Scenarios	6	
<hr/>		
Chapter 2. Installing DB2 Universal Database on Windows 9x or Windows NT	9	
Before You Begin.	9	
Performing the Installation	10	
Verifying the Installation	12	
Software Registration	14	
<hr/>		
Chapter 3. Installing DB2 Universal Database on OS/2	17	
Before You Begin.	17	
Performing the Installation	18	
Verifying the Installation	19	
Software Registration	20	
<hr/>		
Part 2. Configuring DB2 Personal Edition	23	
<hr/>		
Chapter 4. Configuring Client-to-Server Communications Using the Client Configuration Assistant	25	
Configuration Steps	26	
Adding a Database Using a Profile.	26	
Adding a Database Using Discovery	28	
Adding a Database Manually	30	
Creating and Using Profiles	32	
Server Profiles.	32	
Client Profiles.	33	
<hr/>		
Part 3. Appendixes	37	
<hr/>		
Appendix A. Basic Task Knowledge.	39	
Starting First Steps	39	
Starting the Software Registration Tool	39	
Starting the Client Configuration Assistant	39	
Starting the Control Center	40	
Entering Commands Using the Command Center	40	
Entering Commands Using the Command Line Processor	42	
Command Line Mode	42	
Interactive Input Mode.	43	
Working with the System Administrative Group	44	
<hr/>		
Appendix B. Migrating from Previous Versions and Releases	45	
Migrating from Previous Versions of DB2	45	
Pre-Installation Migration Steps	45	
Step 1. Back Up Databases	45	
Step 2. Verify that Databases Can Be Migrated	46	
Post-Installation Steps	52	
Migrating Databases	53	
Optional Post Migration Actions	53	
<hr/>		
Appendix C. National Language Support (NLS)	57	
Code Page and Language Support	57	
<hr/>		
Appendix D. Naming Rules	59	
General Naming Rules	59	
Database, Database Alias, and Catalog Node Name Rules	59	
Object Name Rules	60	
Username, User ID, Group Name, and Instance Name Rules	61	
Workstation Name (nname) Rules	61	
DB2SYSTEM Naming Rules	62	
Password Rules	62	
<hr/>		
Appendix E. About the DB2 Family of Products	63	

Working with Data Using DB2 UDB Personal Edition	67	Completing Tasks with SmartGuides	77
Administering Instances and Databases with the DB2 Administration Tools.	68	Accessing Online Help	78
Managing Instances and Database Objects Using the Control Center	69	DB2 Information – Hardcopy and Online	80
Managing Communications on the Server	71	Viewing Online Information	87
Monitoring Databases Using DB2 Performance Monitor	72	Accessing Information with the Information Center	88
Viewing SQL Access Plans Using Visual Explain	72	Setting Up a Document Server	89
Managing Connections to Databases Using the Client Configuration Assistant	73	Searching Online Information	90
Understanding the Administration Server	74	Printing the PostScript Books.	90
Developing Applications Using the DB2 Software Developer's Kit	74	Ordering the Printed Books	91
Running Your Own Applications	75	Appendix G. Notices	93
Appendix F. How the DB2 Library Is Structured.	77	Trademarks	94
		Trademarks of Other Companies	94
		Index	97
		Contacting IBM	101

Welcome to DB2 Universal Database!

The DB2 Universal Database Quick Beginnings books provide a focused introduction to the installation and configuration of DB2 products.

This *Quick Beginnings* book will guide you through the planning, installation, migration (if necessary), and set up of a DB2 Personal Edition workstation.



Conventions

This book uses the following highlighting conventions:

- **Boldface** indicates commands or graphical user interface (GUI) controls such as names of fields, folders, icons, or menu choices.
- *Italics* indicates variables that you should replace with your own value. It is also used to indicate book titles and to emphasize words.
- Monospace indicates file names, directory paths, and examples of text you enter exactly as shown.



This icon marks a fast path. A fast path guides you to information specific to your configuration where multiple options are available.



This icon marks a tip. It provides additional information that can help you complete a task.

For a complete description of the DB2 library, see “Appendix F. How the DB2 Library Is Structured” on page 77.



- If you do not follow the documented installation method with the recommended defaults, it may be necessary to refer to the *Administration Guide* and the *Command Reference* to complete the installation and configuration.
- The term *Windows 32-bit operating systems* refers to Windows 95, Windows 98, or Windows NT.
- The term *Windows 9x* refers to Windows 95 or Windows 98.
- The term *DB2 client* refers to a DB2 Run-Time Client or a DB2 Administration Client.
- The term *DB2 Universal Database* refers to DB2 Universal Database on OS/2, UNIX, and Windows 32-bit operating systems, unless otherwise stated.

Part 1. Installing DB2 Personal Edition

Chapter 1. Planning for Installation



If you know that your system meets all the hardware and software requirements, and you want to begin installing your DB2 product right away, go to “Chapter 2. Installing DB2 Universal Database on Windows 9x or Windows NT” on page 9 or “Chapter 3. Installing DB2 Universal Database on OS/2” on page 17.

For information on the DB2 family of products, see “Appendix E. About the DB2 Family of Products” on page 63.

There are many components that you might want to use in your environment. Use the product and planning information in this section to ensure that your system meets the prerequisites and to decide which components you want to install.

Before you begin your DB2 product installation, you should determine the requirements for the system that you are planning to install and configure.

Memory Requirements

This section shows the *suggested* amount of memory that is required to run a DB2 product. The memory requirements listed here are estimates; the actual amounts required depend on the functions you are using. Use this information to plan for systems with a large number of concurrent clients or databases.

For information about memory requirements during the day-to-day operations of your databases, refer to the *Administration Guide*.

DB2 Universal Database Requirements

The amount of memory that you require depends on the size of your databases. We suggest that you have a minimum of 32 MB of memory to accommodate average sized databases while using the DB2 GUI tools. For more information, refer to the *Administration Guide*.

Disk Requirements

This section shows the *minimum* amount of disk space that is required to install your DB2 product and components. It does not include the disk requirements necessary for the operating system, application development tools, and communications products. Consult each product's documentation for these values. Estimates for disk space requirements are listed here; the actual amounts required depend on the functions you are using.

For information about space requirements for data, refer to the *Administration Guide*.

Estimating Fixed Disk Requirements

To estimate the disk requirements for a particular configuration, add the recommended minimum disk sizes for the products and components that you want to install. Include an allowance for your application data.

Components

Use Table 1 to estimate the amount of disk space you need to install DB2 and associated components on your operating system.

Table 1. Estimating Disk Requirements

	Recommended Minimum Disk (MB)
DB2 Universal Database for OS/2	
DB2 Personal Edition	60 MB
DB2 GUI Tools	60 MB
Online documentation in HTML format (English)	31 MB
Far-East Code Page Conversion Support	5 MB
Total Disk Space Required	__ MB
DB2 Universal Database for Windows NT	
DB2 Personal Edition	33 MB
DB2 GUI Tools	68 MB
Online documentation in HTML format (English)	31 MB
Far-East Code Page Conversion Support	5 MB
Total Disk Space Required	__ MB

Software Requirements

This section outlines the software required to run DB2 products.

Product Requirements

Table 2 lists the operating system and communications software required for DB2 Universal Database.

Table 2. Software Requirements

Product	Hardware/Software Requirements	Communications
		OS/2
• DB2 Universal Database	<ul style="list-style-type: none"> • OS/2 Warp Version 3 and Version 4 • OS/2 Warp Connect Version 3 • OS/2 Warp Server Version 4 • OS/2 Warp Server Advanced V4 • OS/2 Warp Server Advanced V4 with SMP Feature • OS/2 Warp Server for e-business <p>Versions of OS/2 with built-in communications capabilities such as OS/2 Warp Connect, Warp Server, Warp Server Advanced, and OS/2 Warp Version 4 are recommended.</p> <p>Notes:</p> <ol style="list-style-type: none"> 1. The DB2 SNMP subagent requires DPI 2.0 support provided by the OS/2 Warp Server installed. If you plan to use DB2 SNMP subagent for system management, you will have to use OS/2 Warp Server. 	<p>APPC, IPX/SPX, NetBIOS, or TCP/IP</p> <ul style="list-style-type: none"> • For local IPX/SPX connectivity, you require Novell NetWare Requester, Version 2.10 or later. • For local NetBIOS connectivity, you require IBM NTS/2 Version 1.0, or IBM Communications Manager Version 1.x or later, or IBM OS/2 LAN Requester. • For TCP/IP connectivity, you require IBM TCP/IP Version 3.0 or later for OS/2 Warp Versions 3 and 4, and for OS/2 Warp Connect Version 3. The OS/2 Warp Server Version 4 base operating system provides TCP/IP connectivity, if selected during installation. • For SNA (APPC) connectivity, one of the following communications products is required: <ul style="list-style-type: none"> – IBM eNetwork Communications Server for OS/2 Warp Version 5 – IBM eNetwork Personal Communications for OS/2 Warp Version 4.2 – IBM Communication Server for OS/2 Version 4

Table 2. Software Requirements (continued)

Product	Hardware/Software Requirements	Communications
Windows 32-bit Operating Systems		
• DB2 Universal Database	• Windows 95 Version 4.00.950 or later	APPC, TCP/IP, and MPTN (APPC over TCP/IP)
	• Windows 98	• The Windows NT base operating system provides NetBIOS, IPX/SPX, Named Pipes, and TCP/IP connectivity.
	• Windows NT Version 4.0 with Service Pack 3, or later	For SNA (APPC) connectivity, one of the following communication products is required: <ul style="list-style-type: none"> • IBM Communications Server for Windows NT Version 5.01 or later
Notes: <ol style="list-style-type: none"> 1. If SNA two-phase commit is necessary, then IBM Communications Server for Windows NT Version 5.01 or later is required. 2. If you plan to use DCE (Distributed Computing Environment) with Version 6 of DB2 Universal Database, you will need: <ul style="list-style-type: none"> • A DCE product that is at OSF DCE level 1.1 with IBM DCE for Windows NT Version 2.0. • To ensure that if you are connecting to DB2 for OS/390 V5.1 database that it is enabled for DCE support using OS/390 DCE Base Services Version 3. <p>In addition, DB2 also supports Gradient PC-DCE for Windows 32-bit operating systems Version 2.0 Runtime Media Kit.</p> 3. If you plan to use LDAP (Lightweight Directory Access Protocol), you require the IBM eNetwork LDAP Directory Client Version 3.1. For more information, refer to the <i>Administration Guide</i>. 4. If you plan to use the ADSTAR Distributed Storage Manager (ADSM) facilities for backup and restore of your databases, you require the ADSM Client Version 3 or later. 5. If you have the IBM Antivirus program installed on your operating system, it must be Version 3.0 or later. 6. If you plan to use the Simple Network Management Protocol (SNMP) subagent, you require DPI 2.0 provided by IBM Netfinity Agent. 		

Possible Client-to-Server Connectivity Scenarios

The following table shows the communication protocols that can be used when connecting a specific LAN, host or AS/400 DB2 client to a specific DB2 server or DB2 Connect server.



DB2 Workgroup, DB2 Enterprise, and DB2 Enterprise - Extended Editions can service requests from host or AS/400 clients (DRDA ARs).

Table 3. Possible Client-to-Server Connectivity Scenarios

Client	Server					
	AIX	HP-UX	Linux	OS/2	Solaris	Windows NT
AS/400 V4R1	SNA	N/A	N/A	SNA	SNA	SNA
AS/400 V4R2	SNA TCP/IP	TCP/IP	TCP/IP	SNA TCP/IP	SNA TCP/IP	SNA TCP/IP
AIX	APPC TCP/IP	TCP/IP	TCP/IP	APPC TCP/IP	APPC TCP/IP	APPC TCP/IP
HP-UX	APPC TCP/IP	TCP/IP	TCP/IP	APPC TCP/IP	APPC TCP/IP	APPC TCP/IP
Linux	TCP/IP	TCP/IP	TCP/IP	TCP/IP	TCP/IP	TCP/IP
MVS	SNA	N/A	N/A	SNA	SNA	SNA
OS/2	APPC IPX/SPX(1),(2) TCP/IP	TCP/IP	TCP/IP	APPC IPX/SPX(1),(2) NetBIOS TCP/IP	APPC IPX/SPX(1) TCP/IP	APPC IPX/SPX(1) NetBIOS TCP/IP
OS/390	SNA TCP/IP	TCP/IP	TCP/IP	SNA TCP/IP	SNA TCP/IP	SNA TCP/IP
Silicon Graphics IRIX	TCP/IP	TCP/IP	TCP/IP	TCP/IP	TCP/IP	TCP/IP
SQL/DS	SNA	N/A	N/A	SNA	SNA	SNA
Solaris	APPC TCP/IP	TCP/IP	TCP/IP	APPC TCP/IP	APPC TCP/IP	APPC TCP/IP
VSE & VM V6	SNA	N/A	N/A	SNA	SNA	SNA
VSE V6	SNA	N/A	N/A	SNA	SNA	SNA
VM V6	SNA TCP/IP	TCP/IP	TCP/IP	SNA TCP/IP	SNA TCP/IP	SNA TCP/IP
Windows 9x	TCP/IP	TCP/IP	TCP/IP	NetBIOS TCP/IP	TCP/IP	IPX/SPX(1) NPIPE NetBIOS TCP/IP
Windows NT	APPC IPX/SPX(1) TCP/IP	TCP/IP	TCP/IP	APPC IPX/SPX(1) NetBIOS TCP/IP	APPC IPX/SPX(1) TCP/IP	APPC IPX/SPX(1) NPIPE NetBIOS TCP/IP
1. Direct Addressing 2. File Server Addressing						

Chapter 2. Installing DB2 Universal Database on Windows 9x or Windows NT



If you are migrating from a previous version of DB2, you must complete certain procedures before installing DB2 Universal Database Version 6. Go to “Appendix B. Migrating from Previous Versions and Releases” on page 45.

This section describes how to install DB2 Universal Database Personal Edition on Windows 32-bit operating systems. For information on how to deploy this product using a distributed installation or install a DB2 Administration Client to remotely administer this system, refer to the *Installation and Configuration Supplement*.

Before You Begin

Before you begin the installation, ensure that you have the following items and information:

- ___ 1. Ensure that your system meets all of the memory, hardware, and software requirements to install your DB2 product. For more information, see “Chapter 1. Planning for Installation” on page 3.
- ___ 2. A user account that will be used to perform the installation. The account you specify must:
 - Be defined on the local machine.
 - Belong to the Local Administrator’s group.
 - Have the *Act as part of the operating system* advanced user right.



You can perform the installation without the *Act as part of the operating system* advanced user right, however, the setup program will be unable to validate the account that you specify for the Administration Server. We recommend that any user account used to install this product have this advanced user right.

For information on how to grant user rights, refer to the Windows NT online help.

- ___ 3. During installation, you will provide a user account that will be used by the Administration Server to log on to the system. The account you specify must:
 - Be defined on the local machine.
 - Belong to the Local Administrator’s group.
 - Have the *Act as part of the operating system* advanced user right.

By default, the setup program will create a user account using the username `db2admin` and password `db2admin`. You can accept these default values, create your own user account by modifying the default values, or provide your own. If you create or provide your own user account, ensure that it conforms to DB2's naming rules. For more information, see "Appendix D. Naming Rules" on page 59.



If you use the default user account `db2admin`, and do not change the default password on the setup screen, you should change this password immediately following the installation since `db2admin` is the default password for any installation and is therefore well known.

To change the password that is associated with the Administration Server, enter the following command:

```
db2admin setid username password
```

- 4. To verify that DB2 installed correctly, you will need to have a user account that belongs to the System Administrative (SYSADM) group, is 8 characters or less, and complies with all of DB2's naming rules.

By default, any user that belongs to the *Local Administrators* group, on the local machine where the account is defined, has SYSADM authority on the instance. For more information, see "Working with the System Administrative Group" on page 44. For more information on valid DB2 usernames, see "Appendix D. Naming Rules" on page 59.

Performing the Installation

To install your DB2 product, perform the following steps:

- Step 1. Log on to the system with the user account that you created to perform the installation.
- Step 2. Shut down any other programs so that the setup program can update files as required.
- Step 3. Insert the CD-ROM into the drive. The auto-run feature automatically starts the setup program. The setup program will determine the system language, and launch the setup program for that language. If you want to run the setup program in a different language, or the setup program failed to auto-start, see the tip that follows.



To manually invoke the setup program, perform the following steps:

- a. Click on **Start** and select the **Run** option.
- b. In the **Open** field, enter the following command:

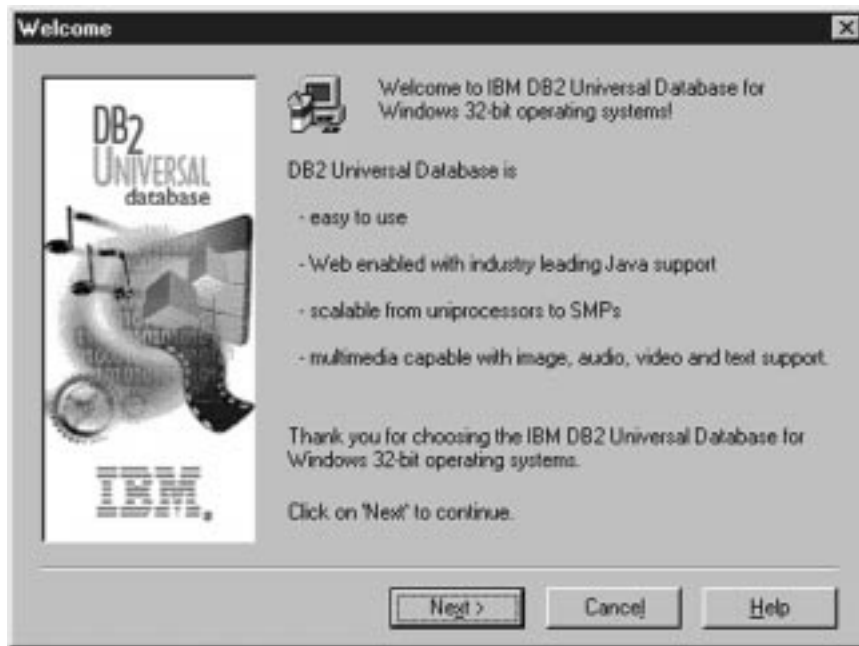
`x:\setup /i language`

where:

- *x*: represents your CD-ROM drive
- *language* represents the country code for your language (for example, EN for English). Table 5 on page 57 lists the code for each available language.

- c. Click on **OK**.

Step 4. The Welcome window opens.



Step 5. Respond to the setup program's prompts. Online help is available to guide you through the remaining steps. Invoke the online help by clicking on the **Help** push button or pressing the **F1** key at any time. You can click on the **Cancel** push button at any time to end the installation.



For information on errors encountered during installation, see the db2.log file. The db2.log file stores general information and error messages resulting from the install and uninstall activities. By default, the db2.log file is located in the x:\db2log directory, where x: represents the drive on which your operating system is installed.

For more information, refer to the *Troubleshooting Guide*.

Based on your component selections, the installation program has:

- Created DB2 program groups and items (or shortcuts).
- Created the following services on Windows NT: DB2 Governor, DB2 JDBC Applet Server, DB2 Security Server.
- Updated the Windows registry (Windows NT only).
- Created a default instance named DB2.

On Windows NT, it was added as a service; if you selected to **Automatically start the DB2 instance at boot time**, the service's startup type was set to **Automatic**, otherwise, it was set to **Manual**.

On Windows 9x, if you selected to **Automatically start the DB2 instance at boot time**, the **db2start** command was added to the **Startup** folder.

- Created the DB2 Administration Server.

Verifying the Installation

You can verify that DB2 is installed correctly by creating the SAMPLE database on your system, and accessing data from the database.

To verify the installation, if you installed First Steps, perform the following steps:

- Step 1. Log on to the system with the user account that you created to verify the installation.
- Step 2. Start First Steps. For more information, see "Starting First Steps" on page 39.
- Step 3. Click on the **Create the SAMPLE Database** graphic button on the main panel of First Steps.

This command may take a few minutes to process. For a detailed description of the contents of the SAMPLE database, refer to the *Administration Guide*. When the SAMPLE database has been created, you will receive a completion message. Click on **OK**.
- Step 4. Once the database is created, click on the **View the SAMPLE database** graphic button to select data from the SAMPLE database. This action launches the Command Center. The Command Center allows

you to use a supplied script to view data from the database. Click on the **Execution** icon (the gears icon in the top left corner of the screen) to begin the query.

- Step 5. Click on the **Work with the SAMPLE Database** graphic button to start the Control Center. The Control Center allows you to perform administration tasks on different instance and database objects. For more information, see “Administering Instances and Databases with the DB2 Administration Tools” on page 68.

If you did not install the DB2 tools, you can verify the installation by creating the SAMPLE database and connecting to it using the command line processor as follows:

- Step 1. Log on to the system with the DB2 user account that you created to verify the installation.

- Step 2. Enter the **db2sampl** command to create the SAMPLE database.

By default, the SAMPLE database will be created on the drive where DB2 was installed; however, you can specify a drive on which to create this database. For example, to create the SAMPLE database on the F: drive, enter the following command:

```
db2sampl F:
```

This command may take a few minutes to process. There is no completion message; when the command prompt returns, the process is complete.

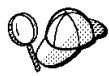
The SAMPLE database is automatically catalogued with the database alias SAMPLE when it is created.

- Step 3. Start the database manager by entering the **db2start** command.

- Step 4. Enter the following commands to connect to the SAMPLE database, retrieve a list of all the employees that work in department 20, and reset the database connection:

```
db2cmd
db2 connect to sample
db2 "select * from staff where dept = 20"
db2 connect reset
```

For information about entering DB2 commands, see “Entering Commands Using the Command Center” on page 40 or “Entering Commands Using the Command Line Processor” on page 42.



After you have verified the installation, you can remove the SAMPLE database to free up disk space. Enter the **db2 drop database sample** command to drop the SAMPLE database.

Software Registration

The Software Registration tool is used to register IBM Software with IBM and update IBM's Software Customer Profiles. A customer profile contains identification and demographic information about the users of each IBM software product. The software registration tool contains information and instructions on how to register IBM software by modem, telephone, Internet, FAX, or postal service. To register your software with IBM, perform the following steps:

- Step 1. Start the IBM Software Registration tool. For more information, see "Starting the Software Registration Tool" on page 39.
- Step 2. Enter the appropriate information and complete the IBM Software Registration Smart Guide. Click on the **Help** push button if you need assistance.



Upgrading from a Try-and-Buy License

To upgrade from a Try-and-Buy license, perform the following steps:

- Step 1. Start the Control Center. For more information, see "Starting the Control Center" on page 40.
- Step 2. Click on the **License Center** icon from the Control Center toolbar. The License Center opens.
- Step 3. Complete the steps to upgrade your DB2 license. For more information, refer to the License Center's online help by pressing the **F1** key.

If you are upgrading your DB2 product to a higher entitlement, you must ensure that you uninstall your current installation of DB2 and then reinstall your new licensed product.

For example, if you have a Try-and-Buy version of DB2 Workgroup Edition installed on your machine, and you purchased a license for DB2 Enterprise Edition, you must ensure that you remove the installed copy of DB2 Workgroup Edition and then reinstall DB2 Enterprise Edition.

If you did not install the DB2 tools, you can upgrade your Try-and-Buy license using the **db2licm** command. For more information, refer to the *Command Reference*.

Note: *Your Proof of Entitlement and License Information* booklets identify the products for which you are licensed.



If you are migrating from a previous version of DB2, go to “Post-Installation Steps” on page 52 for information on how to complete the migration process.

Go to the section that describes that task that you want to perform:

- To install a DB2 Administration client that will remotely administer your DB2 Personal Edition workstation, refer to the *Installation and Configuration Supplement*.
 - To set up your DB2 Personal Edition workstation to act as a client to remote server, see “Chapter 4. Configuring Client-to-Server Communications Using the Client Configuration Assistant” on page 25.
-

Chapter 3. Installing DB2 Universal Database on OS/2



If you are migrating from a previous version of DB2, you must complete certain procedures before installing DB2 Universal Database Version 6.0. See “Appendix B. Migrating from Previous Versions and Releases” on page 45 for further information.

This section describes how to install DB2 Universal Database Personal Edition on an OS/2 workstation. For information on how to deploy this product using a distributed installation or install a DB2 Administration Client to remotely administer this system, refer to the *Installation and Configuration Supplement*.

Before You Begin

Before you begin the installation, be sure that you have the following items and information:

- ___ 1. Ensure that your system meets all of the memory, hardware, and software requirements to install your DB2 product. For more information, see “Chapter 1. Planning for Installation” on page 3.
- ___ 2. A user ID to perform the installation.
If UPM is installed, the user ID you specify must have *Administrator* or *Local Administrator* authority. Create a user ID with these characteristics if necessary.
If UPM is not installed, DB2 will install it and set up the userid USERID with password PASSWORD.
- ___ 3. A user ID for the Administration Server.
If UPM is installed, the user ID you specify must have *Administrator* or *Local Administrator* authority. Create a userid with these characteristics if necessary.
If UPM is not installed, DB2 will install it and the userid specified for the Administration Server will be created.
- ___ 4. To verify that DB2 installed correctly, you will need to have a user account that belongs to the System Administrative (SYSADM) group, is 8 characters or less, and complies with all of DB2’s naming rules.
By default, any user that belongs to the *Local Administrators* group, on the local machine where the account is defined, has SYSADM authority on the instance. For more information, see “Working with the System Administrative Group” on page 44. For more information on valid DB2 usernames, see “Appendix D. Naming Rules” on page 59.

Performing the Installation

To install your DB2 product, perform the following steps:

Step 1. Log on to the system with the user ID that you created to perform the installation.

Step 2. Insert the CD-ROM in the drive.

Step 3. Open an OS/2 command window and set the directory to your CD-ROM drive by entering the following command:

```
cd x:
```

where *x:* represents your CD-ROM drive.

Step 4. Enter the following command:

```
x:\install
```

where *x:* represents your CD-ROM drive.

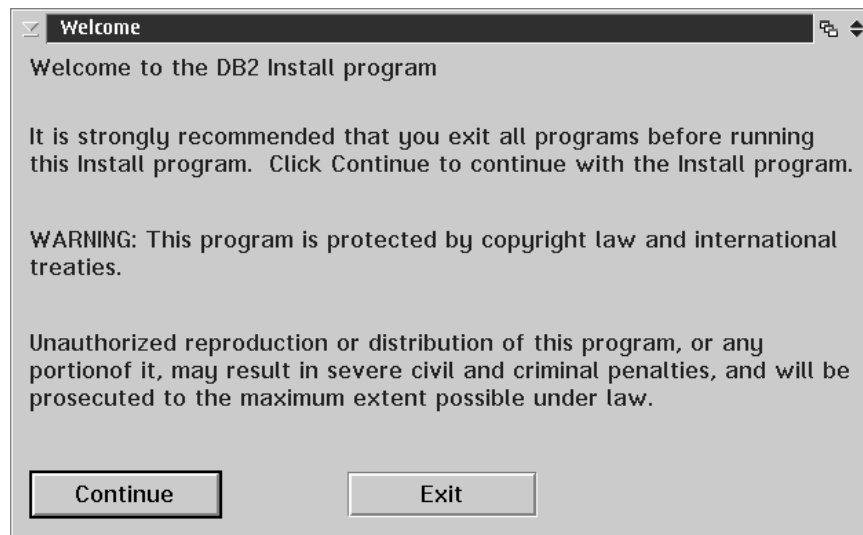


To manually invoke the installation program, enter the following command:

```
x:\install /i language
```

where *x:* represents your CD-ROM drive and *language* represents the country code for your language.

Step 5. The Welcome window opens.



Step 6. Respond to the install program's prompts. Online help is available to guide you through the remaining steps. Invoke online help by

clicking on the **Help** push button or the **F1** key at any time. You can click on the **Cancel** push button at any time to end the installation.



For information on errors encountered during installation, see the 11.log and 12.log files. These files store general information and error messages resulting from installation and uninstall activities. By default, these files are located in the x:\db2log directory; where x: represents the drive on which your operating system is installed.

For more information, refer to the *Troubleshooting Guide*.

Verifying the Installation

You can verify that DB2 is installed correctly by creating the SAMPLE database on your system, and accessing data from the database.

To verify the installation, if you installed First Steps, perform the following steps:

Step 1. Log on to the system with the user account that you created to verify the installation.

Step 2. Start First Steps. For more information, see “Starting First Steps” on page 39.

Step 3. Click on the **Create the SAMPLE Database** graphic button on the main panel of First Steps.

This command may take a few minutes to process. For a detailed description of the contents of the SAMPLE database, refer to the *Administration Guide*. When the SAMPLE database has been created, you will receive a completion message. Click on **OK**.

Step 4. Once the database is created, click on the **View the SAMPLE database** graphic button to select data from the SAMPLE database. This action launches the Command Center. The Command Center allows you to use a supplied script to view data from the database. Click on the **Execution** icon (the gears icon in the top left corner of the screen) to begin the query.

Step 5. Click on the **Work with the SAMPLE Database** graphic button to start the Control Center. The Control Center allows you to perform administration tasks on different instance and database objects. For more information, see “Administering Instances and Databases with the DB2 Administration Tools” on page 68.

If you did not install the DB2 tools, you can verify the installation by creating the SAMPLE database and connecting to it using the command line processor as follows:

Step 1. Log on to the system with the DB2 user account that you created to verify the installation.

Step 2. Enter the **db2samp1** command to create the SAMPLE database.

By default, the SAMPLE database will be created on the drive where DB2 was installed; however, you can specify a drive on which to create this database. For example, to create the SAMPLE database on the F: drive, enter the following command:

```
db2samp1 F:
```

This command may take a few minutes to process. There is no completion message; when the command prompt returns, the process is complete.

The SAMPLE database is automatically catalogued with the database alias SAMPLE when it is created.

Step 3. Start the database manager by entering the **db2start** command.

Step 4. Enter the following commands to connect to the SAMPLE database, retrieve a list of all the employees that work in department 20, and reset the database connection:

```
db2cmd
db2 connect to sample
db2 "select * from staff where dept = 20"
db2 connect reset
```

For information about entering DB2 commands, see “Entering Commands Using the Command Center” on page 40 or “Entering Commands Using the Command Line Processor” on page 42.



After you have verified the installation, you can remove the SAMPLE database to free up disk space. Enter the **db2 drop database sample** command to drop the SAMPLE database.

Software Registration

The Software Registration tool is used to register IBM Software with IBM and update IBM's Software Customer Profiles. A customer profile contains identification and demographic information about the users of each IBM software product. The software registration tool contains information and instructions on how to register IBM software by modem, telephone, Internet, FAX, or postal service. To register your software with IBM, perform the following steps:

Step 1. Start the IBM Software Registration tool. For more information, see “Starting the Software Registration Tool” on page 39.

Step 2. Enter the appropriate information and complete the IBM Software Registration Smart Guide. Click on the **Help** push button if you need assistance.



Upgrading from a Try-and-Buy License

To upgrade from a Try-and-Buy license, perform the following steps:

- Step 1. Start the Control Center. For more information, see “Starting the Control Center” on page 40.
- Step 2. Click on the **License Center** icon from the Control Center toolbar. The License Center opens.
- Step 3. Complete the steps to upgrade your DB2 license. For more information, refer to the License Center’s online help by pressing the **F1** key.

If you are upgrading your DB2 product to a higher entitlement, you must ensure that you uninstall your current installation of DB2 and then reinstall your new licensed product.

For example, if you have a Try-and-Buy version of DB2 Workgroup Edition installed on your machine, and you purchased a license for DB2 Enterprise Edition, you must ensure that you remove the installed copy of DB2 Workgroup Edition and then reinstall DB2 Enterprise Edition.

If you did not install the DB2 tools, you can upgrade your Try-and-Buy license using the **db2licm** command. For more information, refer to the *Command Reference*.

Note: Your *Proof of Entitlement* and *License Information* booklets identify the products for which you are licensed.



If you are migrating from a previous version of DB2, go to “Post-Installation Steps” on page 52 for information on how to complete the migration process.

Go to the section that describes that task that you want to perform:

- To install a DB2 Administration client that will remotely administer your DB2 Personal Edition workstation, refer to the *Installation and Configuration Supplement*.
- To set up your DB2 Personal Edition workstation to act as a client to remote server, see “Chapter 4. Configuring Client-to-Server Communications Using the Client Configuration Assistant” on page 25.

Part 2. Configuring DB2 Personal Edition

Chapter 4. Configuring Client-to-Server Communications Using the Client Configuration Assistant



To configure communications from a DB2 client to a server, the remote server must be configured to accept inbound client requests. By default, the server installation program automatically detects and configures most protocols on the server for inbound client connections.

If you have added a new protocol to your network that is not detectable, or wish to modify any of the default settings, refer to the *Installation and Configuration Supplement*.

If you are adding a host or AS/400 database, refer to the Configuring DB2 Connect to Host or AS/400 Communications Using the Client Configuration Assistant section in your *DB2 Connect Quick Beginnings* manual.

The information in this section describes how to use the Client Configuration Assistant (CCA) to configure your OS/2, Windows 9x, or Windows NT clients to access remote servers. To complete the steps in this section, you should be familiar with how to start the CCA, for more information, see “Starting the Client Configuration Assistant” on page 39.

With the CCA, you can:

- Configure database connections that applications can use.
- Update or delete existing configured database connections.
- Display the information for existing configured connections.
- Test a connection to a database.
- Enable or disable databases to be configured as CLI or ODBC data sources.
- Export client profiles, or import client and server profiles which contain information for the setup of a client.
- Update client configuration settings.
- Discover remote databases (if enabled).
- Bind user applications and utilities to databases.
- Change your server password.

The CCA provides three methods to set up a database connection to a server:

- Using a profile.
- Searching the network for databases.
- Manually entering database and communication protocol information for a server.



When you add a database using this configuration method, the Client Configuration Assistant will generate a default node name for the server where the database resides.

Configuration Steps

To configure your workstation to access a database on a remote server, perform the following steps:

Step 1. Log on to the system with a valid DB2 user ID. For more information, see “Appendix D. Naming Rules” on page 59.



If you are adding a database to a system that has a DB2 or DB2 Connect server product installed, log on to this system as a user with System Administrative (SYSADM) or System Controller (SYSCTRL) authority on the instance. For more information, see “Working with the System Administrative Group” on page 44.

This restriction is controlled by the *catalog_noauth* database manager configuration parameter. For more information, refer to the *Administration Guide*.

Step 2. Start the CCA. For more information, see “Starting the Client Configuration Assistant” on page 39.

The Welcome window opens each time you start the CCA, until you add at least one database to your client.

Step 3. Click on the **Add Database** or **Add** push button to configure a connection.



Go to the section that describes the configuration method that you want to use:

- “Adding a Database Using a Profile”.
- “Adding a Database Using Discovery” on page 28.
- “Adding a Database Manually” on page 30.

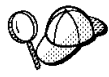
Adding a Database Using a Profile

A profile contains information about instances and databases on a system, and databases within each instance. For information on profiles, see “Creating and Using Profiles” on page 32.

If your administrator provided you with a profile, perform the following steps:

Step 1. Select the **Use an access profile** radio button and click on the **Next** push button.

- Step 2. Click on the ... push button and select a profile.
- Step 3. Enter a local database alias name in the **Database alias** field and add a comment that describes this database in the **Comment** field. Click on the **Next** push button.



If you do not specify a database alias name, the default will be the same as the remote database alias name.

- Step 4. Register this database as an ODBC data source.



If you are not planning to use ODBC, click on the **Done** push button and go to the next step.

- a. Ensure that the **Register this database for ODBC** check box is selected.
 - b. Select the radio button that describes how you would like to register this database:
 - If you would like all users on your system to have access to this data source, select the **As a system data source** radio button.
 - If you would like only the current user to have access to this data source, select the **As a user data source** radio button.
 - c. If you would like to create an ODBC data source file to share database access, select the **Create a file data source** check box and enter the path and filename for this file in the **File data source name** field.
 - d. Click on the **Optimize for application** drop down box and select the application for which you want to tune the ODBC settings.
 - e. Click on the **Done** push button to add the database that you selected. The Confirmation window opens.
- Step 5. Click on the **Test Connection** push button to test the connection. The Connect to DB2 Database window opens.
- If the database that you want to add was not added successfully, click on the **Change** push button to change any settings that you may have incorrectly specified or click on the **Help** push button for more information. For even more detailed information, refer to the *Troubleshooting Guide*.
- Step 6. Enter your user ID and password and click on **OK**. If the connection is successful, a message confirming the connection appears.
- Step 7. You are now able to use this database. To finish using the Add Database SmartGuide, click on the **Close** push button; you can then add more databases by clicking on the **Add** push button or exit the CCA.

Adding a Database Using Discovery



This option cannot return information about pre-Version 5 DB2 systems or any systems where an Administration Server is not running. For more information, refer to the *Administration Guide*.

You can use the Discovery feature to search the network for databases. To add a database to your system using Discovery, perform the following steps:

- Step 1. Select the **Search the network** radio button and click on the **Next** push button.
- Step 2. Click on the [+] sign beside the **Known Systems** icon to list all the systems known to your client.
- Step 3. Click on the [+] sign beside a system to get a list of the instances and databases on it. Select the database that you want to add, click on the **Next** push button, and proceed to Step 4.

If the system that contains the database that you want to add is not listed, perform the following steps:

- a. Click on the [+] sign beside the **Other Systems (Search the network)** icon to search the network for additional systems.
- b. Click on the [+] sign beside a system to get a list of the instances and databases on it.
- c. Select the database that you want to add, click on the **Next** push button, and proceed to Step 4.



The Client Configuration Assistant may be unable to detect a remote system if:

- The Administration Server is not running on the remote system.
- The Discovery function times out. By default, the Discovery function will search the network for 40 seconds; this may not be long enough to detect the remote system. You can set the *DB2DISCOVERYTIME* registry variable to specify a longer period of time.
- The network that the Discovery request is running on is configured so that the Discovery request does not reach the remote system desired.
- You are using NetBIOS as the Discovery protocol. You may need to set the *DB2NBDISCOVERRCVBUFS* registry variable to a larger value to enable the client to receive more concurrent Discovery replies.

For more information, refer to the *Administration Guide*.

If the system that you want to add is still not listed, it can be added to the list of systems by performing the following steps:

- a. Click on the **Add System** push button

- b. Enter the required communication protocol parameters for the remote Administration Server and click on **OK**. A new system is added. For more information, click on the **Help** push button.
- c. Select the database that you want to add and click on the **Next** push button.

Step 4. Enter a local database alias name in the **Database alias** field and add a comment that describes this database in the **Comment** field. Click on the **Next** push button.



If you do not specify a database alias name, the default will be the same as the remote database alias name.

Step 5. Register this database as an ODBC data source.



If you are not planning to use ODBC, click on the **Done** push button and go to the next step.

- a. Ensure that the **Register this database for ODBC** check box is selected.
- b. Select the radio button that describes how you would like to register this database:
 - If you would like all users on your system to have access to this data source, select the **As a system data source** radio button.
 - If you would like only the current user to have access to this data source, select the **As a user data source** radio button.
- c. If you would like to create an ODBC data source file to share database access, select the **Create a file data source** check box and enter the path and filename for this file in the **File data source name** field.
- d. Click on the **Optimize for application** drop down box and select the application for which you want to tune the ODBC settings.
- e. Click on the **Done** push button to add the database that you selected. The Confirmation window opens.

Step 6. Click on the **Test Connection** push button to test the connection. The Connect to DB2 Database window opens.

If the database that you want to add was not added successfully, click on the **Change** push button to change any settings that you may have incorrectly specified or click on the **Help** push button for more information. For even more detailed information, refer to the *Troubleshooting Guide*.

Step 7. Enter your user ID and password and click on **OK**. If the connection is successful, a message confirming the connection appears.

Step 8. You are now able to use this database. To finish using the Add Database SmartGuide, click on the **Close** push button; you can then add more databases by clicking on the **Add** push button or exit the CCA.

Adding a Database Manually

If you have the protocol information for the server that you want to connect to, you can manually enter all of the configuration information. This method is analogous to entering commands via the command line processor, however, the parameters are presented graphically for you.

To add a database to your system manually, perform the following steps:

Step 1. Select the **Manually configure a connection to a DB2 database** radio button and click on the **Next** push button.



If you are not using Lightweight Directory Access Protocol (LDAP), this tab will not be shown, skip this step and go to Step 3.

Step 2. Select the radio button that corresponds to the location where you would like your DB2 directories to be maintained.

- If you would like to maintain the DB2 directories locally, select the **Add database to your local machine** radio button and click on the **Next** push button.
- If you would like to maintain the DB2 directories globally at an LDAP server, select the **Add database using LDAP** radio button and click on the **Next** push button.

Step 3. Select the radio button that corresponds to the protocol that you want to use from the **Protocol** list and click on the **Next** push button.



If you have installed a DB2 Connect product or the DB2 Connect Server Support feature available with DB2 Enterprise Edition or DB2 Enterprise - Extended Edition, and have selected the **TCP/IP** or **APPC** radio button, select the radio button from the **Target operating system** list that corresponds to the type of system where the database that you are trying to connect to resides.

Step 4. Enter the required communication protocol parameters and click on the **Next** push button. For more information, click on the **Help** push button.

Step 5. Enter the database alias name of the remote database that you want to add in the **Database name** field and a local database alias name in the **Database alias** field. Add a comment that describes this database in the **Comment** field and click on the **Next** push button.

If you are adding a database that resides on a host or AS/400 system, the **Database name** field will appear as follows:

OS/390 or MVS
Location name

AS/400
RDB name

VM or VSE
DBNAME



When a database is created on the remote server, if a database alias is not specified during database creation, the database is created with a database alias=*database_name*; otherwise, the database alias is the name that was specified when the database was created.

Step 6. Register this database as an ODBC data source.

- a. Ensure that the **Register this database for ODBC** check box is selected.
- b. Select the radio button that describes how you would like to register this database:
 - If you would like all users on your system to have access to this data source, select the **As a system data source** radio button.
 - If you would like only the current user to have access to this data source, select the **As a user data source** radio button.
- c. If you would like to create an ODBC data source file to share database access, select the **Create a file data source** check box and enter the path and filename for this file in the **File data source name** field.
- d. Click on the **Optimize for application** drop down box and select the application for which you want to tune the ODBC settings.
- e. Click on the **Done** push button to add the database that you selected. The Confirmation window opens.



If you are adding a database using the *manual* method, you can also select the **Node Options** tab, the **Security Options** tab, or the **Host or AS/400 Options** tab (if you are adding a host or AS/400 database) to specify more detailed catalog information. Refer to the online help in each tab for more information.

If you want to use the default settings for the node, security, and host or AS/400 (if applicable) options, click on the **Done** push button and go to the next step.

Step 7. Click on the **Test Connection** push button to test the connection. The Connect to DB2 Database window opens.

If the database that you want to add was not added successfully, click on the **Change** push button to change any settings that you may

have incorrectly specified or click on the **Help** push button for more information. For even more detailed information, refer to the *Troubleshooting Guide*.

- Step 8. Enter your user ID and password and click on **OK**. If the connection is successful, a message confirming the connection appears.
- Step 9. You are now able to use this database. To finish using the Add Database SmartGuide, click on the **Close** push button; you can then add more databases by clicking on the **Add** push button or exit the CCA.



You can use the Export feature of the CCA to create a Client Profile for an existing client configuration and use it to create identical target clients across your network. A Client Profile contains database connection, ODBC/CLI, and configuration information for an existing client. Use the CCA Import feature to set up multiple clients across your network. Each target client will have the same configuration and settings as the existing client. For more information on creating and using Client Profiles, see “Creating and Using Profiles”.



You have now completed all the tasks that are involved in Quick Beginnings and are ready to start using DB2 Universal Database.

If you want to deploy this product using a distributed installation, refer to the *Installation and Configuration Supplement*.

Creating and Using Profiles

The information in this section describes how to create and use profiles to set up connections between DB2 clients and servers. You can use either a *Server Profile* or a *Client Profile* to configure database connections on a client.



Go to the section that describes the type of profile that you want to use:

- “Server Profiles”.
- “Client Profiles” on page 33.

Server Profiles

A Server Profile contains information about instances on a server system, and databases within each instance. The information for each instance includes the protocol information required to set up a client to connect to databases in that instance.

To generate a Server Profile, use the Export Server Profile function provided in the Control Center. When a profile is generated, it includes instances that

have the *discover_inst* database manager configuration parameter and databases with the *discover_db* database configuration parameter set to *ENABLE*. The *discover* parameter in the Administration Server's configuration file must be set to either *SEARCH* or *KNOWN* to generate a profile for a server system.

The default settings for these configuration parameters enable you to discover all instances and databases on your network. For information on setting the *discover_inst*, *discover_db*, and *discover* configuration parameters, refer to the *Administration Guide*.



We recommend that you create a Server Profile only after you have created the DB2 databases that you want your remote clients to access.

To create a Server Profile, perform the following steps:

Step 1. Start the Control Center. For more information, refer to “Starting the Control Center” on page 40.

Step 2. Select the system that you want to create a profile for and click on the right mouse button.



If the system that you want to create a profile for is not shown, select the **Systems** icon, click on the right mouse button, and select the **Add** option. Click on the **Help** push button and follow the online help.

Step 3. Select the **Export server profile** option.

Step 4. Enter a path and filename for this profile and click on the **Export** push button.



You are ready to use this profile on your system. For more information on how to add a database to your system using a Server Profile, go to “Configuration Steps” on page 26.

Client Profiles

Information in a Client Profile can be used to configure clients using the Import function in the Client Configuration Assistant (CCA). These clients can import all or a subset of the configuration information in a profile.



This scenario assumes that the database connections configured on one client will be exported and used to set up one or more clients.

A Client Profile is generated from a client using the Export function of the CCA. The information contained in a Client Profile is determined during the export process. Depending on the settings chosen, it can contain the existing client's:

- Database connection information (including CLI or ODBC settings).
- Client settings (including database manager configuration parameters, DB2 registry variables).
- CLI or ODBC common parameters.
- Configuration data for the local APPC or NetBIOS communications subsystem.

To create a Client Profile, perform the following steps:

- Step 1. Start the CCA. For more information, see “Starting the Client Configuration Assistant” on page 39.
- Step 2. Click on the **Export** push button. The Select Export Option window opens.
- Step 3. Select one of the following export options:
- If you want to create a profile that contains all of the databases cataloged on your system, and all of the configuration information for this client, select the **All** radio button, click on **OK**, and go to Step 6.
 - If you want to create a profile that contains all of the databases cataloged on your system *without* any of the configuration information for this client, select the **Database connection information** radio button, click on **OK**, and go to Step 6.
 - If you want to select a subset of the databases that are cataloged on your system, or a subset of the configuration information for this client, select the **Customize** radio button, click on **OK**, and go to the next step.
- Step 4. Select the databases to be exported from the **Available DB2 databases** box and add them to the **Selected databases** box by clicking on the > push button.



To add all of the available databases to the **Databases to be exported** box, click on the >> button.

- Step 5. Select the check boxes from the **Select custom export option** box that correspond to the options that you want to set up for the target client.

To customize settings, click on the appropriate **Customize** push button. The settings that you customize will only affect the profile to be exported, no changes will be made to your workstation. For more information, click on the **Help** push button.

- Step 6. Click on **OK**. The Export Client Profile window opens.
- Step 7. Enter a path and file name for this Client Profile and click on **OK**. The DB2 Message window opens.
- Step 8. Click on **OK**.

To import a Client Profile, perform the following steps:

- Step 1. Start the CCA. For more information, see “Starting the Client Configuration Assistant” on page 39.
- Step 2. Click on the **Import** push button. The Select Profile window opens.
- Step 3. Select a Client Profile to import and click on **OK**. The Import Profile window opens.
- Step 4. You can select to import all or a subset of the information in a Client Profile. Select one of the following import options:
- To import all the databases defined in a Client Profile, select the **All** radio button.
 - To import a specific database, or settings, that are defined in a Client Profile, select the **Customize** radio button. Select the check boxes that correspond to the options that you want to customize.
- Step 5. Click on **OK**.



If you selected the **All** radio button, you are now ready to start using your DB2 product. For more advanced topics, refer to the *Administration Guide* and the *Installation and Configuration Supplement* online document.

- Step 6. You are presented with a list of systems, instances, and databases. Select the database that you want to add and click on the **Next** push button.
- Step 7. Enter a local database alias name in the **Database alias** field and add a comment that describes this database in the **Comment** field. Click on the **Next** push button.



If you do not specify a database alias name, the default will be the same as the remote database alias name.

- Step 8. Register this database as an ODBC data source.



If you are not planning to use ODBC, click on the **Done** push button and go to the next step.

- Ensure that the **Register this database for ODBC** check box is selected.
- Select the radio button that describes how you would like to register this database:

- If you would like all users on your system to have access to this data source, select the **As a system data source** radio button.
 - If you would like only the current user to have access to this data source, select the **As a user data source** radio button.
- c. If you would like to create an ODBC data source file to share database access, select the **Create a file data source** check box and enter the path and filename for this file in the **File data source name** field.
 - d. Click on the **Optimize for application** drop down box and select the application for which you want to tune the ODBC settings.
 - e. Click on the **Done** push button to add the database that you selected. The Confirmation window opens.
- Step 9. Click on the **Test Connection** push button to test the connection. The Connect to DB2 Database window opens.
- If the database that you want to add was not added successfully, click on the **Change** push button to change any settings that you may have incorrectly specified or click on the **Help** push button for more information. For even more detailed information, refer to the *Troubleshooting Guide*.
- Step 10. Enter your user ID and password and click on **OK**. If the connection is successful, a message confirming the connection appears.
- Step 11. You are now able to use this database. To finish using the Add Database SmartGuide, click on the **Close** push button; you can then add more databases by clicking on the **Add** push button or exit the CCA.

Part 3. Appendixes

Appendix A. Basic Task Knowledge

This section describes the basic tasks that you will need to know to use this product effectively.



Go to the task that you want to perform:

- “Starting First Steps”.
 - “Starting the Software Registration Tool”.
 - “Starting the Client Configuration Assistant”.
 - “Starting the Control Center” on page 40.
 - “Entering Commands Using the Command Center” on page 40.
 - “Entering Commands Using the Command Line Processor” on page 42.
 - “Working with the System Administrative Group” on page 44.
-

Starting First Steps

Start First Steps as follows:

OS/2 Click on the **OS/2 Warp** button and select **DB2 for OS/2->First Steps**.

Windows 9x or Windows NT
Click on **Start** and select **Programs->DB2 for Windows->First Steps**

Starting the Software Registration Tool

Start the Software Registration Tool as follows:

OS/2 Click on **OS/2 Warp** and select **DB2 for OS/2->Registration**

Windows 9x or Windows NT
Click on **Start** and select **Programs->DB2 for Windows->Registration**

Starting the Client Configuration Assistant

Start the Client Configuration Assistant (CCA) as follows:

OS/2 Click on **OS/2 Warp**, and select **DB2 for OS/2->Client Configuration Assistant**

Windows 9x or Windows NT
Click on **Start** and select **Programs->DB2 for Windows->Client Configuration Assistant**



You can also start the CCA by entering the **db2cca** command at a command prompt.

Starting the Control Center

Start the Control Center in one of the following ways:

On OS/2

- Enter the **db2cc** command at a command prompt.
or
- Click on the **OS/2 Warp** button and select **DB2 for OS/2->Control Center**.

Note: You must have the prerequisite Java Runtime Environment (JRE) level to launch the Control Center using this command. For more information, refer to the Control Center readme, which can be found in the `x:\sqllib\cc\prime` directory, where `x` is drive where you installed your DB2 product.

On Windows 9x or Windows NT

- Enter the **db2cc** command at a command prompt.
or
- Click on **Start** and select **Programs->DB2 for Windows->Control Center**.



You can also run the Control Center as an applet through a web browser. For more information, refer to the Control Center readme, which can be found in the `x:\sqllib\cc\prime` directory, where `x` is drive where you installed your DB2 product.

Entering Commands Using the Command Center

This section describes how to enter commands using the Command Center. The Command Center provides an interactive window to:

- Run SQL statements, DB2 commands, and operating system commands.
- See the execution result of SQL statements and DB2 commands in a results window. You can scroll through the results and save the output to a file.

- Save a sequence of SQL statements and DB2 commands to a script file. You can then schedule the script to run as a job. When a saved script is modified, all jobs dependent on the saved script inherit the new modified behavior.
- Recall and run a script file.
- See the execution plan and statistics associated with a SQL statement before execution. You do this by invoking Visual Explain in the interactive window.
- Get quick access to database administrative tools from the main tool bar.
- Display all the command scripts known to the system through the Script Center, with summary information listed for each.

Start the Command Center in one of the follows ways:

- Click on the **Command Center** icon in the Control Center.
- Enter the **db2ctr** command.
- Launch the Command Center from the toolbar as follows:

On Windows 9x or Windows NT

- Click on the **Start** button and select **Programs->DB2 for Windows->Command Center**.

On OS/2

- Click on the **OS/2 Warp** button and select **DB2 for OS/2 ->Command Center**.

The Command Center contains a large input area in which you enter your commands. To run the commands you have entered, click on the **Execution** icon (the gears icon), or press **CTRL+Enter**.



In the Command Center, you do not have to enter a command with the db2 prefix; instead you just enter the DB2 command. For example:

```
list database directory
```

To enter operating system commands, precede the operating-system command with an exclamation mark (!). For example:

```
!dir
```

If you want to enter multiple commands, you must end each command with the termination character, then press then **Enter** key to start the next command on a new line. The default termination character is a semicolon (;). To specify a different termination character, click on the **Tools Settings** icon in the menu toolbar.

For example, you could connect to a database called SAMPLE and list all the system tables by entering the following command:

```
connect to sample;  
list tables for system
```

After you have clicked on the **Execution** icon (or pressed **CTRL+Enter**), the Command Center switches to the Results window which informs you how the commands are proceeding.

To recall commands that you have entered, select the **Script** Tab, click on the drop down box, and select a command.

To save commands as scripts, select **Script->Save as** from the menu bar. For more information, click on the **Help** push button or press the **F1** key.



If you want to store commonly used SQL statements or DB2 commands as scripts, click on the **Script Center** icon from the main tool bar. For more information, click on the **Help** push button or press the **F1** key.

Entering Commands Using the Command Line Processor

You can use the command line processor to enter DB2 commands, SQL statements, and operating system commands. It operates in the following modes:

Command Line Mode

The DB2 command line processor behaves like a command window from your operating system. You can enter operating system commands, DB2 commands, or SQL statements and view their output.

Interactive Input Mode

The db2 prefix that you use for DB2 commands (in Command Line Mode) is pre-entered for you. You can enter operating systems commands, DB2 commands, or SQL statements and view their output.

File Input Mode

Processes commands that are stored in a file. For information on the file input mode, refer to the *Command Reference*.

Command Line Mode

To invoke a DB2 Command window, do the following:

OS/2 Click on **OS/2 Warp**, and select **DB2 for OS/2->Command Line Processor**, or open any command window.

Windows 9x or Windows NT

Click on **Start** and select **Programs->DB2 for**

Windows->Command Window



You can also invoke the DB2 command window by entering the **db2cmd** command at an MS-DOS prompt.

If you are entering commands via the Command Window, you must include the db2 prefix. For example:

```
db2 list database directory
```



If the DB2 command contains characters that have special meaning on the operating system you are using, you will need to enter the command in quotation marks to ensure that it is run properly.

For example, the following command would retrieve all the information from the *employee* table, even if the * character has a special meaning on the operating system:

```
db2 "select * from employee"
```

If you need to enter a long command that does not fit on one line, use the line continuation character, \. When you have reached the end of the line, press the **Enter** key to continue entering the command on the next line. For example:

```
db2 select empno, function, firstname, lastname, birthdate, from \
db2 (cont.) => employee where function='service' and \
db2 (cont.) => firstname='Lily' order by empno desc
```

Interactive Input Mode

To invoke the command line processor in interactive input mode, do the following:

OS/2 Click on **OS/2 Warp**, and select **DB2 for OS/2->Command Line Processor** or enter the **db2** command.

Windows 9x or Windows NT Click on **Start**, and select **Programs->DB2 for Windows->Command Line Processor**.



You can also invoke the command line processor in interactive input mode by entering the **db2cmd** command followed by the **db2** command at an MS-DOS prompt.

In interactive input mode, the prompt looks like this:

```
db2 =>
```

In interactive input mode, you do not have to enter DB2 commands with a db2 prefix; instead, you just enter the DB2 command. For example:

```
db2 => list database directory
```

To enter operating system commands in interactive mode, precede the operating-system command with an exclamation mark (!). For example:

```
db2 => !dir
```

If you need to enter a long command that does not fit on one line, use the line continuation character, \. When you have reached the end of the line, press the **Enter** key to continue entering the command on the next line. For example:

```
db2 => select empno, function, firstname, lastname, birthdate, from \
db2 (cont.) => employee where function='service' and \
db2 (cont.) => firstname='Lily' order by empno desc
```

To end interactive input mode, enter the **quit** command.

For more information on advanced topics using the CLP, refer to the *Command Reference*.

Working with the System Administrative Group

By default, System Administrative (SYSADM) authority is granted to the following:

- | | |
|-------------------|--|
| OS/2 | Any valid DB2 user ID which belongs to the Administrator or Local Administrator group. |
| Windows 9x | Any Windows 9x user. |

For information on how to change the default SYSADM settings and how to assign this authority to a different user or set of users, refer to the *Administration Guide*.

Appendix B. Migrating from Previous Versions and Releases

This section describes how to migrate previous versions of DB2 to the Version 6 format.

DB2 Universal Database Version 6 supports the migration of DB2 Version 2.x, Database Server Version 4x, and DB2 Version 5.x to a format usable by DB2 Version 6.

Migrating from Previous Versions of DB2

This section describes the steps required to migrate either a DB2 Common Server Version 2.x, a Database Server Version 4.x, or a DB2 Universal Database Version 5.x database system to a Version 6 database system.



The migration process for Database Server Version 4 is identical to that used for DB2 Common Server Version 2. Whenever Version 2 is mentioned in this section, the same information also applies to Version 4.

DB2 migration involves the following procedures:

- “Pre-Installation Migration Steps”.
- “Post-Installation Steps” on page 52.



To avoid difficulties during database migration, read this entire appendix before starting the migration process.

Pre-Installation Migration Steps

These steps will help you to ensure that all databases on your system can be migrated to the new DB2 Version 6 format. Before installing your new version of DB2, perform the following steps:

Step 1. Back Up Databases

You should back up all databases before installing your new version of DB2. To back up the databases, perform the following steps:

Step 1. Complete all database transactions.

Step 2. Ensure all applications disconnect from each database.

To list all applications that are connected to a database, enter the **db2 list applications** command. If all applications are disconnected, this command will return the following message:

```
SQL1611W No data was returned by the Database System Monitor.  
SQLSTATE=00000
```

To force all applications to disconnect from the database, enter the **db2 force applications all** command.

Step 3. Ensure all databases are cataloged. To view a list of all the cataloged databases in the current instance, enter the following command:

```
db2 list database directory
```

Step 4. Make a backup copy of all databases. For more information on backing up databases, refer to the *Administration Guide* for the DB2 version you are backing up. For the syntax of the backup command, refer to the *Command Reference* for the DB2 version you are backing up.



Make sure that this is the most recent backup copy of the database before you start the next procedure.

Step 5. Stop the database manager by entering the **db2stop** command.

Step 2. Verify that Databases Can Be Migrated

DB2 provides the **db2ckmig** command to check that databases can be migrated. This command must be run prior to installation. The command is located on the product CD-ROM.

To run the **db2ckmig** command:

1. Insert the CD-ROM into the drive.



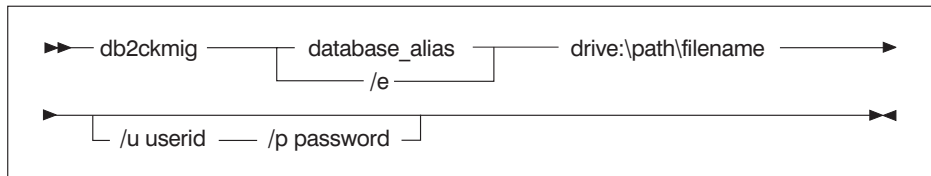
If you are installing DB2 on a Windows 95, Windows 98, or Windows NT workstation, the setup program might be started automatically via the operating system's autorun feature. In this case, do not proceed with the install. Instead, cancel and proceed to the next step.

2. Change to the following directories on the CD-ROM:

- `x:\db2\os2\language\install` on OS/2
- `x:\db2\winnt9x\language\install` for Windows 95 and Windows NT

where *x*: is the CD-ROM drive and *language* is the two-character file name that represents your language. For information on the directory names for each language, see Table 5 on page 57.

3. Enter the **db2ckmig** command to verify that the databases on your system can be correctly migrated. The syntax of the command is as follows:



- database_alias** Specifies a *database_alias* name of a database to be verified for migration. This parameter is required if the **/e** parameter is not specified.
- /e** Specifies that all cataloged databases are to be verified for migration. This parameter is required if the *database_alias* parameter is not specified.
- /l drive:\path\filename** Specifies a drive, target path and filename to keep a list of errors and warnings generated for the scanned database. The *path* variable is optional; if you do not specify a path, the path from which you execute the **db2ckmig** command will be used. You must specify a *filename*.
- /u userid** Specifies the user account used to connect to the database. This parameter must be specified if the **/p** parameter is specified.
- /p password** Specifies the password of the user account used to connect to the database. This parameter must be specified if the **/u** parameter is specified.



You can enter the **db2ckmig** command on remote systems. The database parameter must specify the *database_alias* name of the remote database. You can run this command from any database partition server. The file will be written on your local system.

For example, to check that all databases cataloged on your system can be migrated and to log all the messages from this command to the `c:\temp\message.txt` file, enter the following command:

```
x:\db2\common\db2ckmig /e /l c:\temp\message.txt
```

where *x*: represents your CD-ROM drive.

4. If any errors are found, the **db2ckmig** command generates a log file and places it in the path and file specified by the **/l** option. If there are errors,

see Table 4 for suggested corrective actions. Once the errors have been corrected, re-enter the **db2ckmig** command to ensure that the databases are ready to be migrated.

Table 4. Correcting Error Messages

Error	Action
A database is in backup pending state	Perform a backup of the database.
A database is in roll-forward pending state	Recover the database as required. Perform or resume a roll-forward database to end of logs and stop.
Table space ID is not in normal state	Recover the database and table space as required. Perform or resume a roll-forward database to end of logs and stop.
A database is in an inconsistent state	Restart the database to return it to a consistent state.
The Version 2 database contains database objects that have a schema name of SYSCAT, SYSSTAT, or SYSFUN	<p>These schema names are reserved for the Version 6 database manager. To correct this error, perform the following steps:</p> <p>Step 1. Back up the database.</p> <p>Step 2. Export the data from the database object (catalogs or tables).</p> <p>Step 3. Drop the object.</p> <p>Step 4. Recreate the object with another schema name.</p> <p>Step 5. Import/Load the data into the object.</p> <p>Step 6. Run the db2ckmig command against the database again, ensuring that the database passes the db2ckmig check.</p> <p>Step 7. Make a backup copy of the database. For more information, refer to the <i>Administration Guide</i>.</p>

Table 4. Correcting Error Messages (continued)

Error	Action
<p>The Version 2 database contains database objects that have a dependency on the SYSFUN.DIFFERENCE function. Possible violated database objects are:</p> <ul style="list-style-type: none"> • Constraint • Function • Trigger • View 	<p>The SYSFUN.DIFFERENCE function must be dropped and recreated during database migration. However, if there is a database object that is dependent on this function, migration will fail. To correct this error:</p> <p>Constraint Enter the alter table command to drop the constraint.</p> <p>Function Enter the drop function command to drop the function dependent on SYSFUN.DIFFERENCE.</p> <p>Trigger Enter the drop trigger command to drop the trigger.</p> <p>View Enter the drop view command to drop the view.</p> <p>Note: Any package dependent on the SYSFUN.DIFFERENCE function will be marked inoperative after migration. Therefore, the db2ckmig command will not report any package that is dependent on the SYSFUN.DIFFERENCE function. For more information, refer to the <i>Administration Guide</i>.</p>

Table 4. Correcting Error Messages (continued)

Error	Action
The database contains user-defined distinct types (UDTs) that use the type name BIGINT, DATALINK, REAL or REFERENCE.	<p>These data type names are reserved for the Version 6 database manager. To correct this error, perform the following steps:</p> <p>Step 1. Back up the database.</p> <p>Step 2. Export the data from any tables that are dependent on the data types.</p> <p>Step 3. Drop any tables dependent on the data types, and then drop the data types. These drops may drop other objects such as views, indexes, triggers, or functions.</p> <p>Step 4. Create data types with different type names and recreate the tables using the new data type names. Recreate any dropped views, indexes, triggers, or functions.</p> <p>Step 5. Import/Load the data into the object.</p> <p>Step 6. Run the db2ckmig command against the database again, ensuring that the database passes the db2ckmig check.</p> <p>Step 7. Make a backup copy of the database. For more information, refer to the <i>Administration Guide</i>.</p>

Table 4. Correcting Error Messages (continued)

Error	Action
Structured type and function have the same name.	<p>A structured type and function (with no arguments) belonging to the same schema cannot have the same name. The type or function and objects using the type or function have to be dropped and recreated using another name. To correct this error, perform the following steps:</p> <p>Step 1. Back up the database.</p> <p>Step 2. Export the data from any tables that are dependent on the structured types or functions.</p> <p>Step 3. Drop any tables dependent on the structured types or functions, and then drop the structured types or functions. These drops may drop other objects such as views, indexes, triggers, or functions.</p> <p>Step 4. Create structured types or functions with different type or function names and recreate the tables using the new data type or function names. Recreate any dropped views, indexes, triggers, or functions.</p> <p>Step 5. Import/Load the data into the object.</p> <p>Step 6. Run the db2ckmig command against the database again, ensuring that the database passes the db2ckmig check.</p> <p>Step 7. Make a backup copy of the database. For more information, refer to the <i>Administration Guide</i>.</p>

Migration Considerations for the DB2 Version 2.x User Exit Program



These instructions apply only to the DB2 Version 2.x **db2uexit** user exit program. If you are not using the Version 2.x **db2uexit** user exit program, skip this section and go to “Installing DB2 Version 6” on page 52.

DB2 Version 6 uses the **db2uexit** user exit program to archive and retrieve log files. For more information on the **db2uexit** interfaces, refer to the *Administration Guide*.

Note: These instructions do not apply to OS/2 operating systems.

The following should be considered before migrating from Version 2.x to Version 6 on Windows 95 and Windows NT.

- If the Version 2.x user exit program, **db2uexit.exe**, is found in the `\sqllib\bin` directory before installation, it will remain in this directory after the installation completes. The **db2uext2.exe** program will also be installed in this directory. Its function is to invoke the **db2uexit.cmd** or **db2uexit.exe** user exit programs using the Version 2.x interface. This allows the old user exit program to be used on Version 6.
- If **db2uexit.exe** is in a directory other than the `sqllib\bin` directory, it will remain there after installation, but **db2uext2.exe** will not be installed in the `sqllib\bin` directory. Following installation, if you want to use the old user exit program, you will have to copy it to the `sqllib\bin` directory, then copy **db2uext2.v2** from the `sqllib\misc` directory to the `sqllib\bin` directory, and rename it to **db2uext2.exe**.

If you are migrating from DB2 Version 2.x, you should modify your user exit program to use the DB2 Version 6 interfaces. The new user exit program **db2uexit** should replace **db2uext2** in the `sqllib\bin` directory.

Installing DB2 Version 6

After you have successfully completed the pre-installation checks, you can now start installing DB2 Version 6 using either the interactive or distributed method. During the installation of DB2 Version 6, instance migration for instances created in previous versions of DB2 occurs. For installation procedures, see the following sections:

- “Chapter 2. Installing DB2 Universal Database on Windows 9x or Windows NT” on page 9 or “Chapter 3. Installing DB2 Universal Database on OS/2” on page 17 for interactive installation.
- *Installation and Configuration Supplement* for distributed installation.

Post-Installation Steps

After installing DB2 Version 6, you can now migrate databases and complete other migration activities. Do not scale the database system before migrating all the databases; otherwise, the database migration will fail.

Migrating Databases

To migrate pre-Version 6 databases owned by an instance, perform the following steps:

- Step 1. Log in with a user account that has SYSADM authority. See “Working with the System Administrative Group” on page 44 for more information.
- Step 2. Ensure that the databases you want to migrate are cataloged. To retrieve a list of all cataloged databases on your system, enter the **db2 list database directory** command.
- Step 3. Migrate the database using the **db2 migrate database** command. For more information refer to the *Command Reference*.

Optional Post Migration Actions

There are optional activities you may want to undertake following database migration. You can also apply these optional activities to a down-level database backup which is restored to Version 6, because at the end of the restore, the database is migrated to Version 6.

- **Migration of Unique Indexes (db2uiddl)**

DB2 Versions 5 and 6 support deferred checking for duplicate index key values until the end of UPDATE statements. This ensures that temporary duplicate index key values which *may* be present in mid-UPDATE, but no longer are present at the end of the UPDATE, will not cause the statement to fail.

With DB2 Version 2 the same UPDATE statement may fail because checking for duplicate key index values is performed row by row as the statement processes the table. For example, if a row with value 1 is changed to value 2, but a row with value 2 already exists, a duplicate value 2 will be detected causing the DB2 Version 2 UPDATE statement to fail.

Version 2.x and 5.x unique indexes are not automatically migrated to Version 6 semantics for several reasons:

- Converting unique indexes is a very time-consuming operation.
- You may have applications that depend on the previous version’s unique index semantics.
- You may want to manage the staged conversion of unique indexes on your own schedule, when needed, using the **db2uiddl** command.



All existing applications will continue to work even if the unique indexes are not converted to Version 6 semantics. You have to convert unique indexes to Version 6 semantics only if support for deferred uniqueness checking is required.

To convert unique indexes, you need to perform the following steps:

- Step 1. Log in with a user account that has SYSADM authority. See “Working with the System Administrative Group” on page 44 for more information.
- Step 2. Start the database manager by entering the **db2start** command.
- Step 3. Run the **db2uiddl** command against your migrated database. Refer to the *Command Reference* for the syntax of this command.
The **db2uiddl** command searches the database catalog tables and generates all the CREATE UNIQUE INDEX statements for user tables in an output file.
- Step 4. Review the output generated from the **db2uiddl** command. We recommend that you remove any unwanted indexes from the output file to reduce the time needed to execute it. Comments in the output will flag other situations that require your attention.
- Step 5. Connect to the database by entering the **db2 connect to database_alias** command, where *database_alias* is the alias of the database you are migrating.
- Step 6. Execute the output file, generated by the **db2uiddl** command, as a DB2 Command Line Processor command file, using a command similar to the following:

```
db2 -tvf filename
```


where *filename* is the name of the file generated by the **db2uiddl** command.
- Step 7. Disconnect from the database by entering the **db2 connect reset** command.

DB2 interprets the re-creation of an existing unique index using the **db2uiddl** command to signal that the index is ready to be converted to Version 6 semantics.

- **Update Statistics**

When database migration is completed, the old statistics that are used to optimize query performance are retained in the catalogs. However, Version 6 of DB2 has statistics that are modified or do not exist in Versions 2.x or 5.x. To take advantage of these, you may want to execute the **runstats** command on tables, particularly those tables that are critical to the performance of your SQL queries.

Refer to the *Command Reference* for the syntax of the **runstats** command. For details on the statistics, refer to the *Administration Guide*.

- **Rebind Packages**

During database migration, all existing packages are invalidated. After the migration process, each package is rebuilt when it is used for the first time by the Version 6 database manager.

For better performance we recommend that you run the **db2rbind** command to rebuild all packages stored in the database. In DB2 Version 6 this command has a new option, **all**, which, when specified, rebinds all packages (valid and invalid). If the **all** option is not specified with the **db2rbind** command, only those packages marked as invalid are rebound. Refer to the *Command Reference* for the syntax of this command.

- **Update database and database manager configuration**

Some of the database configuration parameters are changed to Version 6 defaults or to other values during database migration. The same is true for database manager configuration parameters which may have changed to Version 6 defaults or to other values. Refer to the *Administration Guide* for more information about configuration parameters.



We recommend that you run the DB2 Performance Monitor for suggestions in choosing appropriate configuration parameters. For more information, refer to the *Administration Guide*.

- **Migrate Explain Tables**

To migrate the explain tables in a database that has been migrated to Version 6, run the following command:

```
db2exmig -d dbname -e explain_schema [-u userid password]
```

where:

- *dbname* represents the database name. This parameter is required.
- *explain_schema* represents the schema name of the explain tables to be migrated. This parameter is required.
- *userid* and *password* represent the current user's ID and password. These parameters are optional.

The explain tables belonging to the user ID that is running **db2exmig**, or that is used to connect to the database, will be migrated. The explain tables migration tool will rename the Version 2 or Version 5 tables, create a new set of tables, using the **EXPLAIN.DDL**, and copy the contents of the old tables to the new tables. Finally, it will drop the old tables. The migration utility, **db2exmig**, will preserve any user added columns on the explain tables.

Appendix C. National Language Support (NLS)



This feature applies if you intend to use DB2 Personal Edition as a client to access remote servers.

This section contains information about the National Language Support (NLS) provided by DB2, including information about supported languages and code pages. For information on developing applications that use NLS, refer to the *Application Development Guide*.

Code Page and Language Support

During installation of DB2, the country, codepage, and regional settings are established. However, you can change these settings after installing DB2: including regional settings such as code page, country language (for monetary, date, and numeric formatting), and time zone. When a new connection to a database is made, the database manager uses these new values.



You must ensure that your regional settings are set correctly. DB2 may not produce the expected results if the country, code page, or regional settings are incorrect for the intended language.

Table 5 shows the languages into which the DB2 messages are translated.

Note: The code page values in the table that follows are also used as directory names on DB2 CD-ROMs. For example, a reference to `x:\language\win32\install` would be `x:\en\win32\install` for English. For more detailed information on the languages and code pages support, refer to the *Administration Guide*.

Table 5. Languages and Code Pages

Country Code	Language
bg	Bulgarian
br	Brazilian Portuguese
cn	Simplified Chinese (PRC)
cz	Czech
de	German
dk	Danish
en	English

Table 5. Languages and Code Pages (continued)

Country Code	Language
es	Spanish
fi	Finnish
fr	French
gr	Greek
hu	Hungarian
il	Hebrew
it	Italian
jp	Japanese
kr	Korean
nl	Dutch
no	Norwegian
pl	Polish
pt	Portuguese
ru	Russian
se	Swedish
si	Slovenian
tr	Turkish
tw	Traditional Chinese (Taiwan)

Appendix D. Naming Rules



Go to the section that describes the naming rules that you require information on:

- “General Naming Rules”
- “Database, Database Alias, and Catalog Node Name Rules”
- “Object Name Rules” on page 60
- “Username, User ID, Group Name, and Instance Name Rules” on page 61
- “Password Rules” on page 62
- “DB2SYSTEM Naming Rules” on page 62
- “Workstation Name (nname) Rules” on page 61

General Naming Rules

Unless otherwise specified, all names can include the following characters:

- A through Z



When used in most names, characters A through Z are converted from lowercase to uppercase.

- 0 through 9
- @, #, \$, and _ (underscore)

Unless otherwise specified, all names must begin with one of the following characters:

- A through Z
- @, #, and \$

Do not use SQL reserved words to name tables, views, columns, indexes, or authorization IDs.

For a list of SQL reserved words, refer to *SQL Reference*.

Database, Database Alias, and Catalog Node Name Rules

Database names are the identifying names assigned to databases in the database manager.

Database alias names are synonyms given to remote databases. Database aliases must be unique within the System Database Directory in which all aliases are stored.

When naming a database or database alias, see “General Naming Rules” on page 59.

In addition, the name you specify can *only* contain 1 to 8 characters.



To avoid potential problems, do not use the special characters @, #, and \$ in a database name if you intend to have a client remotely connect to a host database. Also, because these characters are not common to all keyboards, do not use them if you plan to use the database in another country.

On Windows NT systems, ensure that no instance name is the same as a service name.

Object Name Rules

Database objects include:

- Tables
- Views
- Columns
- Indexes
- User-defined functions (UDFs)
- User-defined types (UDTs)
- Triggers
- Aliases
- Table spaces
- Schemas

When naming database objects, see “General Naming Rules” on page 59.

In addition, the name you specify:

- Can contain 1 to 18 characters *except* for the following:
 - Table names (including view names, summary table names, alias names, and correlation names), which can contain up to 128 characters; and
 - column names, which can contain up to 30 characters
- Cannot be any of the SQL reserved words that are listed in the *SQL Reference*.



Using delimited identifiers, it is possible to create an object that violates these naming rules; however, subsequent use of the object could result in errors.

For example, if you create a column with a + or – sign included in the name and you subsequently use that column in an index, you will experience problems when you attempt to reorganize the table. To avoid potential problems with the use and operation of your database, *do not* violate these rules.

Username, User ID, Group Name, and Instance Name Rules

*Username*s or *User IDs* are the identifiers assigned to individual users. When naming users, groups, or instances, see “General Naming Rules” on page 59.

In addition, the name you specify:

- Can contain 1 to 8 characters
- Cannot be any of the following:
 - USERS
 - ADMINS
 - GUESTS
 - PUBLIC
 - LOCAL
- Cannot begin with:
 - IBM
 - SQL
 - SYS
- Cannot include accented characters
- In general, when naming users, groups, or instances:

OS/2 Use uppercase names.

Windows 32-bit operating systems
Use any case.

Workstation Name (nname) Rules

A *workstation* name specifies the NetBIOS name for a database server or client or DB2 Personal Edition that resides on the local workstation. This name is stored in the database manager configuration file. The workstation name is known as the *workstation nname*. When naming workstations, see “General Naming Rules” on page 59.

In addition, the name you specify:

- Can contain 1 to 8 characters
- Cannot include &, #, and @
- Must be unique within the network

DB2SYSTEM Naming Rules

DB2 uses the *DB2SYSTEM* name to identify a physical DB2 machine, system, or workstation within a network. On OS/2, you must specify the *DB2SYSTEM* name during install. On Windows 32-bit operating systems, you do not need to specify a *DB2SYSTEM* name; the DB2 setup program detects the NT Computer name and assigns it to *DB2SYSTEM*.

When creating a *DB2SYSTEM* name, see “General Naming Rules” on page 59.

In addition, the name you specify:

- Must be unique within a network
- Can contain a maximum of 21 characters

Password Rules

When determining passwords, consider the following rules:

OS/2 A maximum of 14 characters.

UNIX A maximum of 8 characters.

Windows 9x or Windows NT
A maximum of 14 characters.

Appendix E. About the DB2 Family of Products

The DB2 Family of Products consists of DB2 Universal Database (UDB) and DB2 Connect, as well as some associated DB2 products. Each product is available in different versions that address the needs of today's marketplace. This section provides a brief description of the IBM DB2 Family of Products:

DB2 Universal Database

DB2 Universal Database Enterprise - Extended Edition

DB2 UDB Enterprise - Extended Edition provides a relational database management system that is web-enabled with Java support; scalable from single processors to symmetric multiprocessors; and multimedia capable with image, audio, video, and text support. With DB2 Universal Database, local and remote client applications can create, update, control, and manage relational databases using Structured Query Language (SQL), DB2 APIs (Application Programming Interfaces), ODBC (Open Database Connectivity), JDBC (Java Database Connectivity), SQLJ (Embedded SQL for Java), or DB2 CLI (Call Level Interface).

DB2 Universal Database Enterprise - Extended Edition offers the ability to partition a database across multiple independent machines of a common platform. To the end-user and application developer, the partitioned database still appears as a single database on a single machine. This fully scalable database system enables an application to use multiple machines for a database that is too large for a single machine to handle efficiently. SQL operations and utilities can execute in parallel both within and between the individual database partitions, which can speed up the execution time of a single query or command.

DB2 Universal Database Enterprise - Extended Edition includes DB2 Connect functionality that allows access to DB2 databases on AS/400, MVS/ESA, OS/390, VM, or VSE systems. This product also includes the Federated Database Object Support feature which provides transparent read access to a collection of heterogeneous and semiautonomous data sources, and the ability to perform Distributed Requests.

This product is currently available for AIX, Solaris, and Windows NT operating systems.

DB2 Universal Database Enterprise Edition

DB2 UDB Enterprise Edition provides a relational database management system that is web-enabled with Java support; scalable from single processors to symmetric multiprocessors; and multimedia

capable with image, audio, video, and text support. With DB2 Universal Database, local and remote client applications can create, update, control, and manage relational databases using Structured Query Language (SQL), DB2 APIs (Application Programming Interfaces), ODBC (Open Database Connectivity), JDBC (Java Database Connectivity), SQLJ (Embedded SQL for Java), or DB2 CLI (Call Level Interface).

DB2 Universal Database Enterprise Edition also includes the DB2 Connect functionality that allows access to DB2 databases on AS/400, MVS/ESA, OS/390, VM, and VSE systems. This product also includes the Federated Database Object Support feature which provides transparent read access to a collection of heterogeneous and semiautonomous data sources, and the ability to perform Distributed Requests.

This product is currently available on AIX, HP-UX, Linux, OS/2, Solaris and Windows NT operating systems.

DB2 Universal Database Workgroup Edition

DB2 UDB Workgroup Edition provides a relational database management system that is web-enabled with Java support; scalable from single processors to symmetric multiprocessors; and multimedia capable with image, audio, video, and text support. With DB2 Universal Database, local and remote client applications can create, update, control, and manage relational databases using Structured Query Language (SQL), DB2 APIs (Application Programming Interfaces), ODBC (Open Database Connectivity), JDBC (Java Database Connectivity), SQLJ (Embedded SQL for Java), or DB2 CLI (Call Level Interface).

This product is currently available for Linux, OS/2, and Windows NT.

DB2 Universal Database Personal Edition

DB2 UDB Personal Edition provides a relational database management system that is web-enabled with Java support; and multimedia capable with image, audio, video, and text support. DB2 Universal Database enables local applications to create, update, control, and manage relational databases using the same rich set of APIs as DB2 Enterprise Edition.

DB2 Personal Edition can also act as a client to access remote DB2 servers and can accept inbound Administration Client requests to remotely manage its resources.

This product is currently available for OS/2, Linux, Windows 9x, and Windows NT.

DB2 Universal Database Satellite Edition

DB2 Satellite Edition is a small-footprint version of DB2 Universal

Database that is appropriate for single-user systems, both mobile and branch offices, that occasionally connect to a DB2 control server to exchange data with corporate systems. Administration of DB2 Satellite Edition is scalable, and can be performed through batch jobs that are stored in a control database that resides on a DB2 Workgroup, DB2 Enterprise, or DB2 Enterprise - Extended Edition server.

This product is currently available for Windows 9x and Windows NT.

DB2 Connect

DB2 Connect Enterprise Edition

DB2 Connect Enterprise Edition is a connectivity server that concentrates and manages connections from multiple desktop clients and web applications to DB2 database servers running on host or AS/400 systems. IBM's DB2 for AS/400, DB2 for OS/390, and DB2 for VSE & VM databases continue to be the systems of choice for managing most critical data for the world's largest organizations. While these host and AS/400 databases manage the data, there is a great demand to integrate this data with applications running on Windows, UNIX, OS/2 and Apple workstations.

DB2 Connect Enterprise Edition enables local and remote client applications to create, update, control, and manage DB2 databases and host systems using Structured Query Language (SQL), DB2 APIs (Application Programming Interfaces), ODBC (Open Database Connectivity), JDBC (Java Database Connectivity), SQLJ (Embedded SQLJ for Java), or DB2 CLI (Call Level Interface). In addition, DB2 Connect supports Microsoft Windows data interfaces such as ActiveX Data Objects (ADO), Remote Data Objects (RDO), and OLE DB.

DB2 Connect Enterprise Edition is currently available for AIX, HP-UX, Linux, OS/2, Solaris, and Windows NT operating systems. These servers provide support for applications running on Windows 3.1, Windows 9x, Windows NT, UNIX (AIX, SCO UnixWare 7, Solaris, HP-UX, Linux, Silicon Graphics IRIX, SINIX), OS/2, and Apple Macintosh workstations.

DB2 Connect Personal Edition

DB2 Connect Personal Edition provides access from a single workstation to DB2 databases residing on servers such as MVS/ESA, OS/390, OS/400, VM and VSE, as well as to DB2 Universal Database servers on Windows NT, UNIX, and OS/2. DB2 Connect Personal Edition provides the same rich set of APIs as DB2 Connect Enterprise Edition, and also features integrated SNA support on all Windows platforms.

This product is currently available for OS/2, Linux, Windows 9x, and Windows NT operating systems.

Associated DB2 Products

DB2 Universal Developer's Edition

DB2 Universal Developer's Edition provides all the tools and software you need to create and test multimedia database client/server applications that can run on any DB2 UDB product.

DB2 Universal Developer's Edition contains a collection of DB2 Universal Database servers, DB2 clients, DB2 Connect products, DB2 Software Developer's Kits, extenders for audio, video, image, and text, and application development tools for all supported operating systems.

DB2 Personal Developer's Edition

DB2 Personal Developer's Edition provides all the tools and software you need to create and test multimedia database applications that run only on DB2 UDB Personal Edition products.

The DB2 Personal Developer's Edition contains a collection of DB2 Universal Database servers, DB2 clients, DB2 Connect Personal Edition, DB2 Software Developer's Kits, extenders for audio, video, image, and text, and application development tools for all supported operating systems.

DB2 Run-Time Client CD-ROMs

DB2 Run-Time Client CD-ROMs contain all the latest DB2 Run-Time Clients. A DB2 Run-Time Client provides the ability for workstations from a variety of platforms to access DB2 databases. These workstations are known as DB2 Run-Time Clients.

DB2 Run-Time Client CD-ROMs are included with all DB2 server and DB2 Developer's Edition product packages.

DB2 Administration Client CD-ROMs

DB2 Administration CD-ROMs contain all the latest DB2 Administration Clients.

A DB2 Administration Client provides the ability for workstations from a variety of platforms to access and administer DB2 databases. These workstations are known as DB2 Administration Clients. The DB2 Administration Client that matches the operating system of the DB2 product that is installed is included as a component with all DB2 Universal Database and DB2 Connect products.

The DB2 Administration Client has all of the features of the DB2 Run-Time Client and also includes all the DB2 Administration GUI tools, documentation, and support for Thin Clients. The DB2

Administration Client CD-ROMs are included with all DB2 server and DB2 Developer's Edition product packages.

DB2 DataJoiner

DB2 DataJoiner allows you to access data residing on multiple and diverse platforms, both IBM and multi-vendor, relational and non-relational, as a single database image. With DB2 DataJoiner, you can access all the data in your enterprise as if it were local.

DB2 Data Links Manager

DB2 Data Links Manager manages data files that are not normally found in a database (for example, engineering blueprints or medical x-rays). These data files can be on a file system outside of the database. Manipulation of this data is managed and controlled by DATALINK values in a DB2 database. Use DB2 Data Links Manager to control access to files that are external to a DB2 database.

This product is currently available for AIX and Windows NT operating systems.

DB2 Query Patroller

DB2 Query Patroller provides query and resource management for decision support systems enabling the success of highly scalable data warehouses. As an application, it takes ODBC queries from a client, analyzes them and then dynamically distributes the workload across different nodes on the DB2 UDB Enterprise - Extended Edition installation.

This product is currently available for AIX and Solaris operating systems.

DB2 Net.Data

IBM Net.Data is an application that allows Web developers to easily build dynamic Internet applications using "Web Macros". Net.Data Web Macros have the simplicity of HTML and the power of dynamic SQL. Net.Data provides database connectivity to a variety of data sources including information stored in relational databases and flat files. Data sources, such as DB2, Oracle, and Sybase, and DRDA enabled data sources, can be on a wide range of platforms.

Working with Data Using DB2 UDB Personal Edition

As well as providing a relational database to store your data, DB2 UDB Personal Edition lets you issue requests to query, update, insert, or delete data from local applications. Figure 1 shows DB2 UDB Personal Edition with local applications accessing the local database.

DB2 Personal Edition

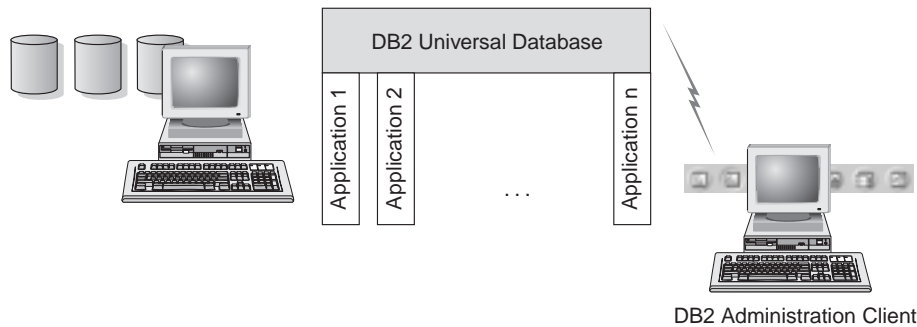


Figure 1. DB2 Personal Edition with Local Applications

DB2 UDB Personal Edition includes graphical tools that enable you to tune performance, access remote DB2 servers, manage all servers from a single site, and process SQL queries. For a description of these tools, see “Administering Instances and Databases with the DB2 Administration Tools”.

Administering Instances and Databases with the DB2 Administration Tools

You can administer local or remote servers using the DB2 Administration Tools. Use the *Control Center* to perform administration tasks such as configuring DB2 instances and databases, backing up and recovering data, scheduling jobs, and managing media, all from a graphical interface.

Note: This option is only available on DB2 Enterprise Edition, DB2 Enterprise - Extended Edition, DB2 Connect Personal Edition, and DB2 Connect Enterprise Edition.

If you want to access DB2 for OS/390 functions from the Control Center:

1. Verify the following information with your systems administrator:
 - a. You have a DB2 for OS/390 license (Version 5 or later).
 - b. You are using DB2 UDB for Enterprise Edition.
2. Apply a function modification identifier. Read the DB2 for OS/390 Program Directory. The program directory identifies and describes the contents of FMIDs for each tape or cartridge.
3. Apply any additional service to DB2 as described in the program directory.
4. Ensure that you enabled the stored procedures address space.

Managing Instances and Database Objects Using the Control Center

The Control Center displays instances and database objects (such as table spaces, tables, and packages) and their relationships to each other. Using the Control Center, you can manage local and remote servers from a single point of control. See Figure 2 for an example of the main Control Center window.

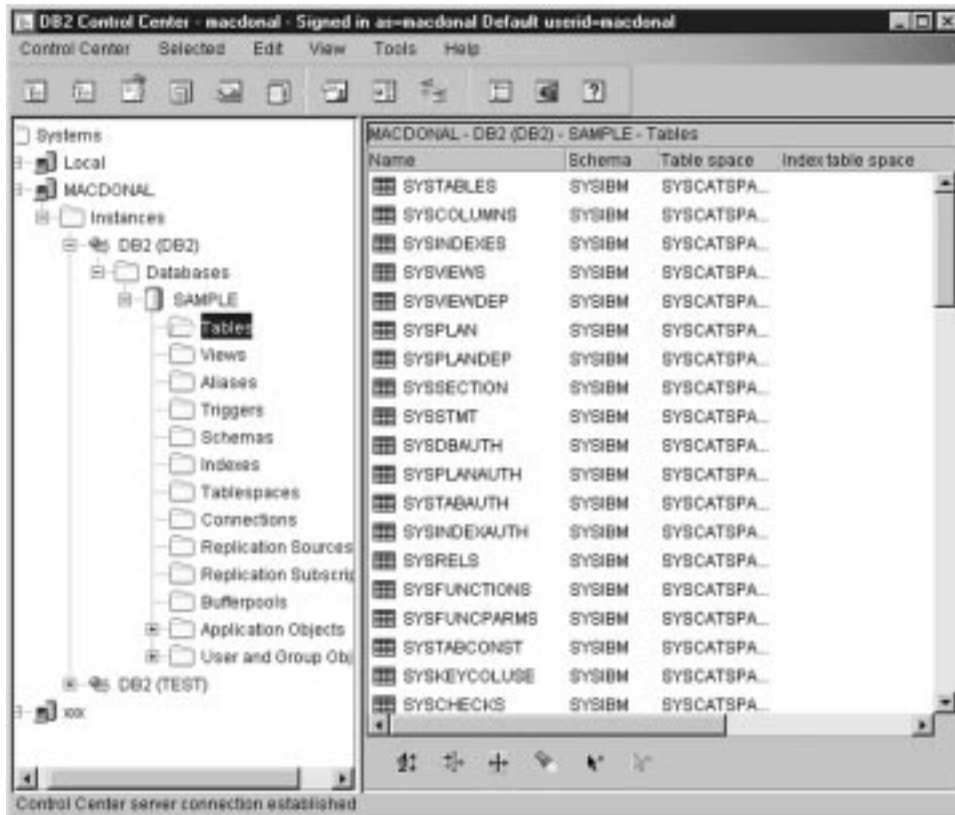


Figure 2. Control Center Main Window

From the Control Center, you can perform operations on database objects. These operations include:

- Create and drop a database
- Create, alter, and drop a table space or table
- Create, alter, and drop an index
- Backup and recover a database or table space
- Define the replication sources and subscriptions to replicate data between systems

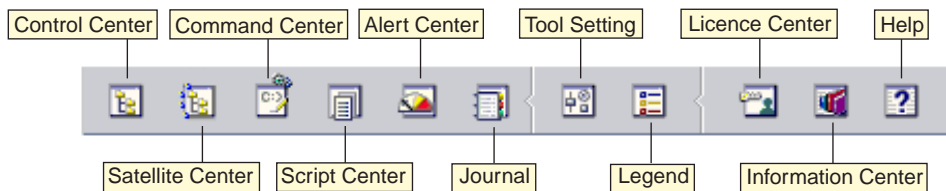
- Monitor resources and events on a server.

You can also control DB2 instances by:

- Maintaining communication protocols
- Setting database manager and database configuration values that affect performance.

SmartGuides are provided to help you perform complex tasks. For example, a SmartGuide is available to tune the performance of your system. See “Completing Tasks with SmartGuides” on page 77 for descriptions of the various SmartGuides and how to start them.

The Control Center provides additional functionality to assist you in managing your servers:



Control Center

Use the Control Center to start another session of the Control Center to administer a server.

Satellite Center

Use the Satellite Center to manage the Satellites that are served by a particular DB2 Control Server. It provides create, remove, modify, and manage functions for Satellites and Groups. You can also create and manage scripts to administer the Satellites.

Command Center

Use the Command Center to enter DB2 commands and SQL statements in an interactive window and see the execution result in a result window. You can scroll through the results and save the output to a file.

Script Center

Use the Script Center to create scripts, which you can store and invoke at a later time. These scripts can contain DB2 commands, SQL statements, as well as operating system commands. Scripts can be scheduled to run unattended. These jobs can be run once or set up to run on a repeating schedule; a repeating schedule is particularly useful for tasks like backup.

Alert Center

Use the Alert Center to monitor your system for early warnings of potential problems or to automate actions to correct problems discovered.

Journal

Use the Journal to view all available information about jobs that are pending execution, executing, or that have completed execution. You can also view the recovery history log, the alerts log, and the messages log; and review the results of jobs that are run unattended.

Tools Setting

Use the Tools Setting to change the settings for the DB2 Administration Tools.

License Center

Use the License Center to manage licenses and display license status and usage of any DB2 products installed on your system. You can also use the License Center to configure your system for proper license monitoring.

Information Center

The Information Center provides quick access to DB2 product information. This product information includes such items as: database tasks, reference material, DB2 documentation, troubleshooting aids, sample programs for application development, and DB2 web-related URLs.

You can also analyze performance using the DB2 Performance Monitor and Visual Explain. These tools are available from the Control Center.



Use the **DB2 Performance Monitor** to monitor the performance of your system. You can monitor activity by sampling data over a period of time or using data for a particular event. See “Monitoring Databases Using DB2 Performance Monitor” on page 72 for more information.



Use **Visual Explain** to view the access plan for explained SQL statements as a graph. You can use the information available from the graph to tune your SQL queries for better performance. See “Viewing SQL Access Plans Using Visual Explain” on page 72 for more information.

You can find additional information in the *Administration Guide* or in the online help.

Managing Communications on the Server

The Control Center allows you to view, update, and reset server protocol settings. These functions are accessed by clicking with the right mouse button

on an instance and selecting the **Setup communications** option from the pop-up menu. This tool helps database administrators to:

- Configure communication parameters in the database manager by clicking with the right mouse button on an instance and selecting the **Configure** option from the pop-up menu.



By default, the setup program automatically detects and configures most communication protocols that it detects on your system.

- Export database information in a profile that can be used to configure clients by clicking with the right mouse button on a system and selecting the **Export** option from the pop-up menu.



DB2 Personal Edition does not accept inbound client requests for data. You can only configure inbound communications on a DB2 Personal Edition workstation to allow administrative requests from a DB2 Administration Client.

For information on how to configure server communications, refer to the *Installation and Configuration Supplement*.

Monitoring Databases Using DB2 Performance Monitor

With the DB2 Performance Monitor, you can:

- Identify and analyze performance problems in database applications or the database manager.
- Use the early warning system to detect potential problems.
- Automate actions to correct problems that are discovered.
- Define your own statistics, in addition to the default set that is provided.

You can choose to monitor the current state of database activity or collect information when specific events occur. The Performance Monitor allows you to capture point-in-time information at specified intervals. The Event Analyzer allows you to view information about the occurrence of events such as deadlocks and transaction completions.

For additional information, refer to the *Administration Guide* or the online help.



You are also able to use the Windows NT Performance Monitor to monitor both database and system performance. For information on how to register DB2 resources and to use the Windows NT Performance Monitor, refer to the *Administration Guide*.

Viewing SQL Access Plans Using Visual Explain

Visual Explain helps database administrators and application developers to:

- View the access plan chosen by the database manager's optimizer for a given SQL statement.
- Tune SQL statements for better performance.
- Design application programs and databases.
- View all the details of an access plan, including the statistics in the system catalogs.
- Decide whether or not to add an index to a table.
- Identify the source of problems by analyzing the access plan or performance of SQL statements.
- Use the portable snapshot function to view snapshots from any remote DB2 server.
- Display access plans for queries on all supported DB2 configurations.

For additional information, refer to the *Administration Guide* or the online help.

Managing Connections to Databases Using the Client Configuration Assistant

The Client Configuration Assistant (CCA) helps you manage your database connections to remote servers. The CCA is available on OS/2 and Windows 32-bit operating systems. This is the preferred method to set up any OS/2, Windows 9x, or Windows NT client to communicate with a server.

You can use the command line processor to set up DB2 clients on any platform. For more information, refer to the *Installation and Configuration Supplement*.

With the Client Configuration Assistant, you can:

- Catalog databases so that they can be used by applications. Three methods are available:
 - Search the network for available databases and selecting one. Client access is automatically set up for that database.
 - Use a database access profile provided by a database administrator to automatically define your connections. Client access is automatically set up for that database.
 - Manually configure a connection to a database by entering the required connection parameters.
- Remove cataloged databases, or change the properties of a cataloged database.
- Test connections to local or remote databases identified on your system.
- Bind applications to a database by selecting utilities or bind files from a list.

- Tune the client configuration parameters on your system. Parameters are logically grouped and suggested settings are provided on the interface as parameters are selected.

Understanding the Administration Server

The Administration Server responds to requests from the DB2 Administration Tools and the Client Configuration Assistant (CCA). The DB2 Administration Tools allow you to start, stop, and set database manager configuration parameters for servers. These tools are also used by the CCA to catalog databases for a client.

The Administration Server must reside on every server that you want to administer and detect. The Administration Server is automatically created and started for you; its default name is DB2DAS00.

Developing Applications Using the DB2 Software Developer's Kit

The DB2 Software Developer's Kit is a collection of tools that are designed to meet the needs of database application developers. It includes libraries, header files, documented APIs, and sample programs to build character-based, multimedia, or object-oriented applications.

A platform-specific version of the DB2 Software Developer's Kit is available for each of the supported operating systems and is currently available in the DB2 Universal Developer's Edition and the DB2 Personal Developer's Edition. Applications that are developed with the DB2 Software Developer's Kit will run on any platform where the equivalent DB2 client component is installed. Through a DB2 client, these applications can access all servers and, by using the DB2 Connect product (or the DB2 Connect functionality supplied with DB2 Enterprise - Extended or DB2 Enterprise Edition), they can also access DB2 Universal Database for AS/400, DB2 Universal Database for OS/390, and DB2 for VSE & VM database servers.

The DB2 Software Developer's Kit allows you to develop applications that use the following interfaces:

- Embedded SQL
- Call Level Interface (CLI) development environment (which is compatible with ODBC from Microsoft)
- Java Database Connectivity (JDBC)
- Embedded SQL for Java (SQLJ)
- DB2 Application Programming Interfaces (APIs) that use administrative functions to manage a DB2 database.

The DB2 Software Developer's Kit includes:

- Precompilers for Java, C, C++, COBOL, and FORTRAN.
- Libraries, include files, and code samples to develop applications that use SQLJ and DB2 CLI.
- JDBC and SQLJ support to develop Java applications and applets.
- Interactive SQL, through the CLP, to prototype SQL statements and perform ad-hoc database queries.
- An API to enable other application development tools to implement precompiler support for DB2 directly with their products.
- An SQL92 and MVS Conformance Flagger to identify embedded SQL statements in applications not conforming to the ISO/ANSO SQL92 Entry Level standard, or which are not supported by DB2 for OS/390.

For complete information on the functionality of the Software Developer's Kit, and instructions on how to use them, as well as a full list of supported compilers for your platform, refer to the *Application Building Guide*.

Running Your Own Applications

Various types of applications can access DB2 databases:

- Applications developed using a DB2 Software Developer's Kit that include embedded SQL (including Java SQLJ applications and applets), APIs, stored procedures, user-defined functions, calls to DB2 CLI, or calls to JDBC applications and applets.
- ODBC applications such as Lotus Approach.
- Net.Data macros containing HTML and SQL.

The DB2 CLI/ODBC driver is an optional component during a DB2 client install. It is required to run CLI, ODBC, JDBC, and some SQLJ applications.

For more information on running your own applications, refer to the *Installation and Configuration Supplement*.

Appendix F. How the DB2 Library Is Structured

The DB2 Universal Database library consists of SmartGuides, online help, books and sample programs in HTML format. This section describes the information that is provided, and how to access it.

To access product information online, you can use the Information Center. You can view task information, DB2 books, troubleshooting information, sample programs, and DB2 information on the Web. See “Accessing Information with the Information Center” on page 88 for details.

Completing Tasks with SmartGuides

SmartGuides help you complete some administration tasks by taking you through each task one step at a time. SmartGuides are available through the Control Center and the Client Configuration Assistant. The following table lists the SmartGuides.

Note: Create Database, Index, and Configure Multisite Update SmartGuide are available for the partitioned database environment.

SmartGuide	Helps You to...	How to Access...
<i>Add Database</i>	Catalog a database on a client workstation.	From the Client Configuration Assistant, click Add .
<i>Back up Database</i>	Determine, create, and schedule a backup plan.	From the Control Center, click with the right mouse button on the database you want to back up and select Backup->Database using SmartGuide .
<i>Configure Multisite Update SmartGuide</i>	Perform a multi-site update, a distributed transaction, or a two-phase commit.	From the Control Center, click with the right mouse button on the Database icon and select Multisite Update .
<i>Create Database</i>	Create a database, and perform some basic configuration tasks.	From the Control Center, click with the right mouse button on the Databases icon and select Create->Database using SmartGuide .

SmartGuide	Helps You to...	How to Access...
<i>Create Table</i>	Select basic data types, and create a primary key for the table.	From the Control Center, click with the right mouse button on the Tables icon and select Create->Table using SmartGuide .
<i>Create Table Space</i>	Create a new table space.	From the Control Center, click with the right mouse button on the Table spaces icon and select Create->Table space using SmartGuide .
<i>Index</i>	Advise which indexes to create and drop for all your queries.	From the Control Center, click with the right mouse button on the Index icon and select Create->Index using SmartGuide .
<i>Performance Configuration</i>	Tune the performance of a database by updating configuration parameters to match your business requirements.	From the Control Center, click with the right mouse button on the database you want to tune and select Configure using SmartGuide .
<i>Restore Database</i>	Recover a database after a failure. It helps you understand which backup to use, and which logs to replay.	From the Control Center, click with the right mouse button on the database you want to restore and select Restore->Database using SmartGuide .

Accessing Online Help

Online help is available with all DB2 components. The following table describes the various types of help. You can also access DB2 information through the Information Center. For information see “Accessing Information with the Information Center” on page 88.

Type of Help	Contents	How to Access...
<i>Command Help</i>	Explains the syntax of commands in the command line processor.	<p>From the command line processor in interactive mode, enter:</p> <p><i>? command</i></p> <p>where <i>command</i> is a keyword or the entire command.</p> <p>For example, <i>? catalog</i> displays help for all the CATALOG commands, while <i>? catalog database</i> displays help for the CATALOG DATABASE command.</p>

Type of Help	Contents	How to Access...
Control Center Help Client Configuration Assistant Help Event Analyzer Help Command Center Help	Explains the tasks you can perform in a window or notebook. The help includes prerequisite information you need to know, and describes how to use the window or notebook controls.	From a window or notebook, click the Help push button or press the F1 key.
Message Help	Describes the cause of a message, and any action you should take.	<p>From the command line processor in interactive mode, enter:</p> <p><code>? XXXnnnnnn</code></p> <p>where <i>XXXnnnnnn</i> is a valid message identifier.</p> <p>For example, <code>? SQL30081</code> displays help about the SQL30081 message.</p> <p>To view message help one screen at a time, enter:</p> <p><code>? XXXnnnnnn more</code></p> <p>To save message help in a file, enter:</p> <p><code>? XXXnnnnnn > filename.ext</code></p> <p>where <i>filename.ext</i> is the file where you want to save the message help.</p>
SQL Help	Explains the syntax of SQL statements.	<p>From the command line processor in interactive mode, enter:</p> <p><code>help statement</code></p> <p>where <i>statement</i> is an SQL statement.</p> <p>For example, help SELECT displays help about the SELECT statement.</p> <p>Note: SQL help is not available on UNIX-based platforms.</p>
SQLSTATE Help	Explains SQL states and class codes.	<p>From the command line processor in interactive mode, enter:</p> <p><code>? sqlstate</code> or <code>? class-code</code></p> <p>where <i>sqlstate</i> is a valid five-digit SQL state and <i>class-code</i> is the first two digits of the SQL state.</p> <p>For example, <code>? 08003</code> displays help for the 08003 SQL state, while <code>? 08</code> displays help for the 08 class code.</p>

DB2 Information – Hardcopy and Online

The table in this section lists the DB2 books. They are divided into two groups:

Cross-platform books

These books contain the common DB2 information for all platforms.

Platform-specific books

These books are for DB2 on a specific platform. For example, there are separate *Quick Beginnings* books for DB2 on OS/2, on Windows NT, and on the UNIX-based platforms.

Cross-platform sample programs in HTML

These samples are the HTML version of the sample programs that are installed with the SDK. They are for informational purposes and do not replace the actual programs.

Most books are available in HTML and PostScript format, or you can choose to order a hardcopy from IBM. The exceptions are noted in the table.

On OS/2 and Windows platforms, HTML documentation files can be installed under the doc\html subdirectory. Depending on the language of your system, some files may be in that language, and the remainder are in English.

On UNIX platforms, you can install multiple language versions of the HTML documentation files under the doc/%L/html subdirectories. Any documentation that is not available in a national language is shown in English.

You can obtain DB2 books and access information in a variety of different ways:

View	See “Viewing Online Information” on page 87.
Search	See “Searching Online Information” on page 90.
Print	See “Printing the PostScript Books” on page 90.
Order	See “Ordering the Printed Books” on page 91.

Name	Description	Form Number	HTML Directory
		File Name for Online Book	
Cross-Platform Books			

Name	Description	Form Number File Name for Online Book	HTML Directory
<i>Administration Guide</i>	<p><i>Administration Guide, Design and Implementation</i> contains information required to design, implement, and maintain a database. It also describes database access using the Control Center(whether local or in a client/server environment), auditing, database recovery, distributed database support, and high availability.</p> <p><i>Administration Guide, Performance</i> contains information that focuses on the database environment, such as application performance evaluation and tuning.</p> <p>You can order both volumes of the <i>Administration Guide</i> in the English language in North America using the form number SBOF-8922.</p>	<p>Volume 1 SC09-2839 db2d1x60</p> <p>Volume 2 SC09-2840 db2d2x60</p>	db2d0
<i>Administrative API Reference</i>	Describes the DB2 application programming interfaces (APIs) and data structures you can use to manage your databases. Explains how to call APIs from your applications.	SC09-2841 db2b0x60	db2b0
<i>Application Building Guide</i>	<p>Provides environment setup information and step-by-step instructions about how to compile, link, and run DB2 applications on Windows, OS/2, and UNIX-based platforms.</p> <p>This book combines the <i>Building Applications</i> books for the OS/2, Windows, and UNIX-based environments.</p>	SC09-2842 db2axx60	db2ax
<i>APPC, CPI-C and SNA Sense Codes</i>	<p>Provides general information about APPC, CPI-C, and SNA sense codes that you may encounter when using DB2 Universal Database products.</p> <p>Note: Available in HTML format only.</p>	No form number db2apx60	db2ap

Name	Description	Form Number File Name for Online Book	HTML Directory
<i>Application Development Guide</i>	Explains how to develop applications that access DB2 databases using embedded SQL or JDBC, how to write stored procedures, user-defined types, user-defined functions, and how to use triggers. It also discusses programming techniques and performance considerations. This book was formerly known as the <i>Embedded SQL Programming Guide</i> .	SC09-2845 db2a0x60	db2a0
<i>CLI Guide and Reference</i>	Explains how to develop applications that access DB2 databases using the DB2 Call Level Interface, a callable SQL interface that is compatible with the Microsoft ODBC specification.	SC09-2843 db2l0x60	db2l0
<i>Command Reference</i>	Explains how to use the command line processor, and describes the DB2 commands you can use to manage your database.	SC09-2844 db2n0x60	db2n0
<i>Data Movement Utilities Guide and Reference</i>	Explains how to use the Load, Import, Export, Autoloader, and Data Propagation utilities to work with the data in the database.	SC09-2858 db2dmx60	db2dm
<i>DB2 Connect Personal Edition Quick Beginnings</i>	Provides planning, installing, and configuring information for DB2 Connect Personal Edition.	GC09-2830 db2c1x60	db2c1
<i>DB2 Connect User's Guide</i>	Provides concepts, programming and general usage information about the DB2 Connect products.	SC09-2838 db2c0x60	db2c0
<i>Connectivity Supplement</i>	Provides setup and reference information on how to use DB2 for AS/400, DB2 for OS/390, DB2 for MVS, or DB2 for VM as DRDA application requesters with DB2 Universal Database servers, and on how to use DRDA application servers with DB2 Connect application requesters. Note: Available in HTML and PostScript formats only.	No form number db2h1x60	db2h1
<i>Glossary</i>	Provides a comprehensive list of all DB2 terms and definitions. Note: Available in HTML format only.	No form number db2t0x50	db2t0

Name	Description	Form Number File Name for Online Book	HTML Directory
<i>Installation and Configuration Supplement</i>	Guides you through the planning, installation, and set up of platform-specific DB2 clients. This supplement contains information on binding, setting up client and server communications, DB2 GUI tools, DRDA AS, distributed installation, and the configuration of distributed requests and access methods to heterogeneous data sources.	GC09-2857 db2iyx60	db2iy
<i>Message Reference</i>	Lists messages and codes issued by DB2, and describes the actions you should take.	GC09-2846 db2m0x60	db2m0
<i>Replication Guide and Reference</i>	Provides planning, configuration, administration, and usage information for the IBM Replication tools supplied with DB2.	SC26-9642 db2e0x60	db2e0
<i>SQL Getting Started</i>	Introduces SQL concepts, and provides examples for many constructs and tasks.	SC09-2856 db2y0x60	db2y0
<i>SQL Reference, Volume 1 and Volume 2</i>	Describes SQL syntax, semantics, and the rules of the language. Also includes information about release-to-release incompatibilities, product limits, and catalog views. You can order both volumes of the <i>SQL Reference</i> in the English language in North America with the form number SBOF-8923.	SBOF-8923 Volume 1 db2s1x60 Volume 2 db2s2x60	db2s0
<i>System Monitor Guide and Reference</i>	Describes how to collect different kinds of information about databases and the database manager. Explains how to use the information to understand database activity, improve performance, and determine the cause of problems.	SC09-2849 db2f0x60	db2f0
<i>Troubleshooting Guide</i>	Helps you determine the source of errors, recover from problems, and use diagnostic tools in consultation with DB2 Customer Service.	S10J-8169	db2p0

Name	Description	Form Number File Name for Online Book	HTML Directory
<i>What's New</i>	Describes the new features, functions, and enhancements in DB2 Universal Database, Version 6.0, including information about Java-based tools.	SC09-2851 db2q0x60	db2q0
Platform-Specific Books			
<i>Administering Satellites Guide and Reference</i>	Provides planning, configuration, administration, and usage information for satellites.	GC09-2821 db2dsx60	db2ds
<i>DB2 Personal Edition Quick Beginnings</i>	Provides planning, installation, migration, and configuration information for DB2 Universal Database Personal Edition on the OS/2, Windows 95, and Windows NT operating systems.	GC09-2831 db2i1x60	db2i1
<i>DB2 for OS/2 Quick Beginnings</i>	Provides planning, installation, migration, and configuration information for DB2 Universal Database on the OS/2 operating system. Also contains installing and setup information for many supported clients.	GC09-2834 db2i2x60	db2i2
<i>DB2 for UNIX Quick Beginnings</i>	Provides planning, installation, migration, and configuration information for DB2 Universal Database on UNIX-based platforms. Also contains installing and setup information for many supported clients.	GC09-2836 db2ixx60	db2ix
<i>DB2 for Windows NT Quick Beginnings</i>	Provides planning, installation, migration, and configuration information for DB2 Universal Database on the Windows NT operating system. Also contains installing and setup information for many supported clients.	GC09-2835 db2i6x60	db2i6
<i>DB2 Enterprise - Extended Edition for UNIX Quick Beginnings</i>	Provides planning, installation, and configuration information for DB2 Enterprise - Extended Edition for UNIX. Also contains installing and setup information for many supported clients.	GC09-2832 db2v3x60	db2v3

Name	Description	Form Number File Name for Online Book	HTML Directory
<i>DB2 Enterprise - Extended Edition for Windows NT Quick Beginnings</i>	Provides planning, installation, and configuration information for DB2 Enterprise - Extended Edition for Windows NT. Also contains installing and setup information for many supported clients.	GC09-2833 db2v6x60	db2v6
<i>DB2 Connect Enterprise Edition for OS/2 and Windows NT Quick Beginnings</i>	Provides planning, migration, installation, and configuration information for DB2 Connect Enterprise Edition on the OS/2 and Windows NT operating systems. Also contains installation and setup information for many supported clients. This book was formerly part of the <i>DB2 Connect Enterprise Edition Quick Beginnings</i> .	GC09-2828 db2c6x60	db2c6
<i>DB2 Connect Enterprise Edition for UNIX Quick Beginnings</i>	Provides planning, migration, installation, configuration, and usage information for DB2 Connect Enterprise Edition in UNIX-based platforms. Also contains installation and setup information for many supported clients. This book was formerly part of the <i>DB2 Connect Enterprise Edition Quick Beginnings</i> .	GC09-2829 db2cyx60	db2cy
<i>DB2 Data Links Manager for AIX Quick Beginnings</i>	Provides planning, installation, configuration, and task information for DB2 Data Links Manager for AIX.	GC09-2837 db2z0x60	db2z0
<i>DB2 Data Links Manager for Windows NT Quick Beginnings</i>	Provides planning, installation, configuration, and task information for DB2 Data Links Manager for Windows NT.	GC09-2827 db2z6x60	db2z6
<i>DB2 Query Patroller Administration Guide</i>	Provides administration information on DB2 Query Patrol.	SC09-2859 db2dwx60	db2dw
<i>DB2 Query Patroller Installation Guide</i>	Provides installation information on DB2 Query Patrol.	GC09-2860 db2iwx60	db2iw
<i>DB2 Query Patroller User's Guide</i>	Describes how to use the tools and functions of the DB2 Query Patrol.	SC09-2861 db2wwx60	db2ww

Name	Description	Form Number File Name for Online Book	HTML Directory
Cross-Platform Sample Programs in HTML			
Sample programs in HTML	Provides the sample programs in HTML format for the programming languages on all platforms supported by DB2 for informational purposes (not all samples are available in all languages). Only available when the SDK is installed. See <i>Application Building Guide</i> for more information on the actual programs. Note: Available in HTML format only.	No form number	db2hs/c db2hs/cli db2hs/clp db2hs/cpp db2hs/cobol db2hs/cobol_mf db2hs/fortran db2hs/java db2hs/rexx

Notes:

1. The character in the sixth position of the file name indicates the language of a book. For example, the file name db2d0e60 indicates that the *Administration Guide* is in English. The following letters are used in the file names to indicate the language of a book:

Language	Identifier
Brazilian Portuguese	b
Bulgarian	u
Czech	x
Danish	d
Dutch	q
English	e
Finnish	y
French	f
German	g
Greek	a
Hungarian	h
Italian	i
Japanese	j
Korean	k
Norwegian	n
Polish	p
Portuguese	v
Russian	r
Simp. Chinese	c
Slovenian	l
Spanish	z

Swedish	s
Trad. Chinese	t
Turkish	m

2. For late breaking information that could not be included in the DB2 books:

- On UNIX-based platforms, see the Release.Notes file. This file is located in the DB2DIR/Readme/%L directory, where %L is the locale name and DB2DIR is:
 - /usr/lpp/db2_06_01 on AIX
 - /opt/IBMDB2/V6.1 on HP-UX, Solaris, SCO UnixWare 7, and Silicon Graphics IRIX
 - /usr/IBMDB2/V6.1 on Linux.
- On other platforms, see the RELEASE.TXT file. This file is located in the directory where the product is installed.
- Under Windows Start menu

Viewing Online Information

The manuals included with this product are in Hypertext Markup Language (HTML) softcopy format. Softcopy format enables you to search or browse the information, and provides hypertext links to related information. It also makes it easier to share the library across your site.

You can view the online books or sample programs with any browser that conforms to HTML Version 3.2 specifications.

To view online books or sample programs on all platforms other than SCO UnixWare 7:

- If you are running DB2 administration tools, use the Information Center. See “Accessing Information with the Information Center” on page 88 for details.
- Select the Open Page menu item of your Web browser. The page you open contains descriptions of and links to DB2 information:
 - On UNIX-based platforms, open the following page:
`file:/INSTHOME/sql1lib/doc/%L/html/index.htm`

 where %L is the locale name.
 - On other platforms, open the following page:
`sql1lib\doc\html\index.htm`

The path is located on the drive where DB2 is installed.

If you have not installed the Information Center, you can open the page by double-clicking on the **DB2 Online Books** icon. Depending on the system you are using, the icon is in the main product folder or the Windows Start menu.

To view online books or sample programs on the SCO UnixWare 7:

- DB2 Universal Database for SCO UnixWare 7 uses the native SCOhelp utility to search the DB2 information. You can access SCOhelp by the following methods:
 - entering the "scohelp" command on the command line,
 - selecting the Help menu in the Control Panel of the CDE desktop or
 - selecting Help in the Root menu of the Panorama desktop

For more information on SCOhelp, refer to the *Installation and Configuration Supplement*.

Accessing Information with the Information Center

The Information Center provides quick access to DB2 product information. The Information Center is available on all platforms on which the DB2 administration tools are available.

Depending on your system, you can access the Information Center from the:

- Main product folder
- Toolbar in the Control Center
- Windows Start menu
- Help menu of the Control Center

The Information Center provides the following kinds of information. Click the appropriate tab to look at the information:

Tasks	Lists tasks you can perform using DB2.
Reference	Lists DB2 reference information, such as keywords, commands, and APIs.
Books	Lists DB2 books.
Troubleshooting	Lists categories of error messages and their recovery actions.
Sample Programs	Lists sample programs that come with the DB2 Software Developer's Kit. If the Software Developer's Kit is not installed, this tab is not displayed.
Web	Lists DB2 information on the World Wide

Web. To access this information, you must have a connection to the Web from your system.

When you select an item in one of the lists, the Information Center launches a viewer to display the information. The viewer might be the system help viewer, an editor, or a Web browser, depending on the kind of information you select.

The Information Center provides some search capabilities, so you can look for specific topics, and filter capabilities to limit the scope of your searches.

For a full text search, click the Search button of the Information Center follow the *Search DB2 Books* link in each HTML file.

The HTML search server is usually started automatically. If a search in the HTML information does not work, you may have to start the search server by double-clicking its icon on the Windows or OS/2 desktop.

Refer to the release notes if you experience any other problems when searching the HTML information.

Note: Search function is not available in the Linux and Silicon Graphics environments.

Setting Up a Document Server

By default, the DB2 information is installed on your local system. This means that each person who needs access to the DB2 information must install the same files. To have the DB2 information stored in a single location, use the following instructions:

1. Copy all files and subdirectories from \sqllib\doc\html on your local system to a Web server. Each book has its own subdirectory containing all the necessary HTML and GIF files that make up the book. Ensure that the directory structure remains the same.
2. Configure the Web server to look for the files in the new location. For information, see the NetQuestion Appendix in *Installation and Configuration Supplement*.
3. If you are using the Java version of the Information Center, you can specify a base URL for all HTML files. You should use the URL for the list of books.
4. Once you are able to view the book files, you should bookmark commonly viewed topics. Among those, you will probably want to bookmark the following pages:

- List of books
- Tables of contents of frequently used books
- Frequently referenced articles, such as the *ALTER TABLE* topic
- The Search form

For information about setting up a search, see the NetQuestion Appendix in *Installation and Configuration Supplement* book.

Searching Online Information

To search for information in the HTML books, you can do the following:

- Click on **Search the DB2 Books** at the bottom of any page in the HTML books. Use the search form to find a specific topic. This function is not available in the Linux or Silicon Graphics IRIX environments.
- Click on **Index** at the bottom of any page in an HTML book. Use the index to find a specific topic in the book.
- Display the table of contents or index of the HTML book, and then use the find function of the Web browser to find a specific topic in the book.
- Use the bookmark function of the Web browser to quickly return to a specific topic.
- Use the search function of the Information Center to find specific topics. See “Accessing Information with the Information Center” on page 88 for details.

Printing the PostScript Books

If you prefer to have printed copies of the manuals, you can decompress and print PostScript versions. For the file name of each book in the library, see the table in “DB2 Information – Hardcopy and Online” on page 80. Specify the full path name for the file you intend to print.

On OS/2 and Windows platforms:

1. Copy the compressed PostScript files to a hard drive on your system. The files have a file extension of .exe and are located in the `x:\doc\language\books\ps` directory, where `x`: is the letter representing the CD-ROM drive and *language* is the two-character country code that represents your language (for example, EN for English).
2. Decompress the file that corresponds to the book that you want. Each compressed book is a self-extracting executable file. To decompress the book, simply run it as you would run any other executable program. The result from this step is a printable PostScript file with a file extension of .ps.

3. Ensure that your default printer is a PostScript printer capable of printing Level 1 (or equivalent) files.
4. Enter the following command from a command line:

```
print filename.ps
```

On UNIX-based platforms:

1. Mount the CD-ROM. Refer to your *Quick Beginnings* manual for the procedures to mount the CD-ROM.
2. Change to `/cdrom/doc/%L/ps` directory on the CD-ROM, where `/cdrom` is the mount point of the CD-ROM and `%L` is the name of the desired locale. The manuals will be installed in the previously-mentioned directory with file names ending with `.ps.Z`.
3. Decompress and print the manual you require using the following command:
 - For AIX:

```
zcat filename | qprt -P PSprinter_queue
```
 - For HP-UX, Solaris, or SCO UnixWare 7:

```
zcat filename | lp -d PSprinter_queue
```
 - For Linux:

```
zcat filename | lpr -P PSprinter_queue
```
 - For Silicon Graphics IRIX:

```
zcat < filename | lp -d PSprinter_queue
```

where *filename* is the full path name and extension of the compressed PostScript file and *PSprinter_queue* is the name of the PostScript printer queue.

For example, to print the English version of *DB2 for UNIX Quick Beginnings* on AIX, you can use the following command:

```
zcat /cdrom/doc/en/ps/db2ixe60.ps.Z || qprt -P ps1
```

Ordering the Printed Books

You can order the printed DB2 manuals either as a set or individually. There are three sets of books available. The form number for the entire set of DB2 books is SB0F-8926-00. The form number for the books listed under the heading "Cross-Platform Books" is SB0F-8924-00.

Note: These form numbers only apply if you are ordering books that are printed in the English language in North America.

You can also order books individually by the form number listed in "DB2 Information – Hardcopy and Online" on page 80. To order printed versions,

contact your IBM authorized dealer or marketing representative, or phone
1-800-879-2755 in the United States or 1-800-IBM-4YOU in Canada.

Appendix G. Notices

Any reference to an IBM licensed program in this publication is not intended to state or imply that only IBM's licensed program may be used. Any functionally equivalent product, program or service that does not infringe any of IBM's intellectual property rights may be used instead of the IBM product, program, or service. Evaluation and verification of operation in conjunction with other products, except those expressly designated by IBM, is the user's responsibility.

IBM may have patents or pending patent applications covering subject matter in this document. The furnishing of this document does not give you any license to these patents. You can send license inquiries, in writing, to the

IBM Director of Licensing
IBM Corporation, North Castle Drive
Armonk, NY 10504-1785
U.S.A.

Licensees of this program who wish to have information about it for the purpose of enabling: (i) the exchange of information between independently created programs and other programs (including this one) and (ii) the mutual use of the information which has been exchanged, should contact:

IBM Canada Limited
Office of the Lab Director
1150 Eglinton Ave. East
North York, Ontario
M3C 1H7
CANADA

Such information may be available, subject to appropriate terms and conditions, including in some cases, payment of a fee.

This publication may contain examples of data and reports used in daily business operations. To illustrate them as completely as possible, the examples include the names of individuals, companies, brands, and products. All of these names are fictitious and any similarity to the names and addresses used by an actual business enterprise is entirely coincidental.

Trademarks

The following terms are trademarks or registered trademarks of the IBM Corporation in the United States and/or other countries:

ACF/VTAM	MVS/ESA
ADSTAR	MVS/XA
AISPO	OS/400
AIX	OS/390
AIXwindows	OS/2
AnyNet	PowerPC
APPN	QMF
AS/400	RACF
CICS	RISC System/6000
C Set++	SP
C/370	SQL/DS
DATABASE 2	SQL/400
DataHub	S/370
DataJoiner	System/370
DataPropagator	System/390
DataRefresher	SystemView
DB2	VisualAge
DB2 Connect	VM/ESA
DB2 Universal Database	VSE/ESA
Distributed Relational Database Architecture	VTAM
DRDA	WIN-OS/2
Extended Services	
FFST	
First Failure Support Technology	
IBM	
IMS	
LAN Distance	

Trademarks of Other Companies

The following terms are trademarks or registered trademarks of the companies listed:

C-bus is a trademark of Corollary, Inc. in the United States, other countries, or both.

HP-UX is a trademark of Hewlett-Packard.

Java, HotJava, Solaris, Solstice, and Sun are trademarks of Sun Microsystems, Inc.

Microsoft, Windows, Windows NT, Visual Basic, and the Windows logo are trademarks or registered trademarks of Microsoft Corporation in the United States, other countries, or both.

PC Direct is a trademark of Ziff Communications Company in the United States, other countries, or both and is used by IBM Corporation under license.

ActionMedia, LANDesk, MMX, Pentium, and ProShare are trademarks of Intel Corporation in the United States, other countries, or both.

UNIX is a registered trademark in the United States, other countries or both and is licensed exclusively through X/Open Company Limited.

Other company, product, or service names, which may be denoted by a double asterisk (**), may be trademarks or service marks of others.

Index

A

- Access Profile
 - creating 33
 - using 32
- Administering Satellites Guide and Reference 84
- Administration Guide 80
- Administration Server
 - overview 74
 - setup 46
- Administrative API Reference 81
- ADSM
 - software requirements 6
- Alert Center 71
- APPC
 - software requirements 5, 6
 - support on Windows NT
 - IBM Communications Server for NT 6
 - Microsoft SNA Server 6
 - supported platforms 6
- APPC, CPI-C and SNA Sense Codes 81
- Application Building Guide 81
- Application Development Guide 81

C

- CD-ROM
 - installing DB2 Universal Database 17, 18
- CLI Guide and Reference 82
- Client Configuration Assistant
 - administering clients
 - communications 26
 - changing privileges 44
 - client profiles 27
 - exporting 34
 - using 33
 - overview 73
 - searching the network 26
 - using access profiles 32
- client profile
 - exporting 34
- Command Center
 - entering DB2 commands 40
 - entering SQL statements 40
 - overview 68
- Command Reference 82

- commands
 - alter table 49
 - db2ckmig 46, 51
 - db2start 54
 - db2uidl 54
 - drop function 49
 - drop trigger 49
 - drop view 49
- communication protocols
 - APPC 6
 - IPX/SPX 6
 - Named Pipes 6
 - NetBIOS 6
 - TCP/IP 6
- communications
 - configuring the client 26
 - managing
 - Client Configuration Assistant 26
 - Control Center 72
 - configuration parameters
 - setting DB2 44
 - SYSADM_GROUP 44
 - configuring client communications
 - setting configuration parameters 55
 - using the Client Configuration Assistant 26
 - configuring communications
 - using Client Configuration Assistant 26
 - configuring server communications
 - setting DB2COMM 33
- Connectivity Supplement 82
- Control Center
 - components 69
 - overview 68

D

- Data Movement Utilities Guide and Reference 82
- database
 - authentication type 52
 - migration 53
 - naming rules 59
- database administration tools
 - Control Center 68
 - overview 68
- database alias
 - naming rules 59

- database objects
 - naming rules 60
- DB2 Connect
 - overview 66
- DB2 Connect Enterprise Edition for OS/2 and Windows NT Quick Beginnings 85
- DB2 Connect Enterprise Edition for UNIX Quick Beginnings 85
- DB2 Connect Personal Edition
 - host communications
 - OS/2 5
- DB2 Connect Personal Edition Quick Beginnings 82
- DB2 Connect User's Guide 82
- DB2 Data Links Manager for AIX Quick Beginnings 85
- DB2 Data Links Manager for Windows NT Quick Beginnings 85
- DB2 Enterprise - Extended Edition
 - disk requirements 4
- DB2 Enterprise - Extended Edition for UNIX Quick Beginnings 84
- DB2 Enterprise - Extended Edition for Windows NT Quick Beginnings 84
- DB2 Enterprise Edition
 - configuration planning 3
 - memory requirements 3
- DB2 library
 - books 80
 - Information Center 88
 - language identifier for books 86
 - late-breaking information 87
 - online help 78
 - ordering printed books 91
 - printing PostScript books 90
 - searching online information 90
 - setting up document server 89
 - SmartGuides 77
 - structure of 77
 - viewing online information 87
- DB2 Personal Edition Quick Beginnings 84
- DB2 Query Patroller Administration Guide 85
- DB2 Query Patroller Installation Guide 85

- DB2 Query Patroller User's Guide 85
- DB2 Universal Database
 - components included
 - Client Configuration Assistant 73
 - Control Center 68, 69
 - DB2 Performance Monitor 72
 - Visual Explain 72
 - installing on OS/2 18
 - overview 69
 - platforms supported 68
 - software requirements 4, 5
- DB2 Workgroup Edition
 - configuration planning 3
 - disk requirements 4
 - memory requirements 3
- db2ckmig command 51
- db2imigr command 46
- db2uidl command 54
- disk requirements
 - client 4
 - server 4
- Distributed Computing Environment
 - software requirements 6

E

- error handling
 - migration 48
- execs
 - db2uexit.exe 51, 52
 - db2uext2.exe 51, 52

F

- fixed disks
 - hardware requirements 4

G

- Glossary 82

H

- hardware requirements
 - fixed disk 4

I

- installation
 - CID using SystemView LAN 12, 19
 - clients
 - OS/2 17
 - disk requirements
 - client 4
 - server 4
 - errors 12, 19
 - log 12, 19

- installation (*continued*)
 - memory requirements
 - client 3
 - server 3
 - servers
 - OS/2 17
 - verifying the installation 12, 19
- Installation and Configuration Supplement 82
- instances
 - naming restrictions 61

J

- Journal 71

M

- managing connections
 - client
 - overview 73
 - using the Client Configuration Assistant 26, 73
 - server
 - overview 73
 - using the Client Configuration Assistant 26
- managing databases using the Control Center 69
- managing server communications
 - overview 72
- memory requirements
 - client 3
 - estimating 3
 - recommended 3
 - server 3
- Message Reference 83
- migration
 - database 53
 - DB2 Version 2.x 45
 - db2chkmig 51
 - post-installation 52
 - post-migration
 - rebinding packages 55
 - unique index conversion 53
 - updating database and database manager configuration 55
 - updating statistics 54
 - pre-installation 45
 - previous releases 45
 - user exit program 51

N

- naming rules
 - database 59
 - database alias 59
 - database objects 60

- naming rules (*continued*)
 - general 59
 - groups 61
 - instance names 61
 - password 63
 - userids 61
 - username 61
 - workstation name (nname) 61
- National Language Support (NLS)
 - code set 57
 - codepage support 57
 - determining codepage 59

P

- parameters
 - SYSADM_GROUP 44
- password
 - naming rules 63
- Performance Monitor
 - using 72
- planning
 - DB2 configuration 3
 - DB2 Connect configuration 3
- privileges
 - required 44
- product
 - descriptions 66
 - overview 66
- programs
 - db2chkmig 46

Q

- Quick Beginnings for OS/2 84
- Quick Beginnings for UNIX 84
- Quick Beginnings for Windows NT 84

R

- Replication Guide and Reference 83
- restrictions
 - instance name 61

S

- Script Center 70
- setting up client communications
 - using the Client Configuration Assistant 26
- setting up document server 89
- Software Developer's Kit
 - overview 74
- software requirements
 - communication protocols 4, 5
 - DB2 client 4
 - DB2 Connect 4, 5
 - DB2 Software Developer's Kit 4, 5

software requirements *(continued)*

DB2 Universal Database 4, 5

SQL

access plans

viewing using Visual

Explain 72

SQL Getting Started 83

SQL Reference 83

SYSADM

privileges

controlling 44

SYSADM_GROUP parameter 44

System Monitor Guide and

Reference 83

T

Tools Setting 71

Troubleshooting Guide 83

U

username

naming rules 61

using the command line processor

(CLP)

cataloging a database 53

V

verifying the installation

server 12, 19

Visual Explain

overview 72

W

What's New 83

Contacting IBM

This section lists ways you can get more information from IBM.

If you have a technical problem, please take the time to review and carry out the actions suggested by the *Troubleshooting Guide* before contacting DB2 Customer Support. Depending on the nature of your problem or concern, this guide will suggest information you can gather to help us to serve you better.

For information or to order any of the DB2 Universal Database products contact an IBM representative at a local branch office or contact any authorized IBM software remarketer.

Telephone

If you live in the U.S.A., call one of the following numbers:

- 1-800-237-5511 to learn about available service options.
- 1-800-IBM-CALL (1-800-426-2255) or 1-800-3IBM-OS2 (1-800-342-6672) to order products or get general information.
- 1-800-879-2755 to order publications.

For information on how to contact IBM outside of the United States, see Appendix A of the IBM Software Support Handbook. You can access this document by accessing the following page:

<http://www.ibm.com/support/>

then performing a search using the keyword “handbook”.

Note that in some countries, IBM-authorized dealers should contact their dealer support structure instead of the IBM Support Center.

World Wide Web

<http://www.software.ibm.com/data/>

<http://www.software.ibm.com/data/db2/library/>

The DB2 World Wide Web pages provide current DB2 information about news, product descriptions, education schedules, and more. The DB2 Product and Service Technical Library provides access to frequently asked questions, fixes, books, and up-to-date DB2 technical information. (Note that this information may be in English only.)

Anonymous FTP Sites

<ftp.software.ibm.com>

Log on as anonymous. In the directory /ps/products/db2, you can find demos, fixes, information, and tools concerning DB2 and many related products.

Internet Newsgroups

comp.databases.ibm-db2, bit.listserv.db2-l

These newsgroups are available for users to discuss their experiences with DB2 products.

CompuServe

GO IBMDB2 to access the IBM DB2 Family forums

All DB2 products are supported through these forums.

To find out about the IBM Professional Certification Program for DB2 Universal Database, go to http://www.software.ibm.com/data/db2/db2tech/db2cert.html
--



Part Number: CT6D5NA



Printed in the United States of America
on recycled paper containing 10%
recovered post-consumer fiber.

GC09-2831-00



CT6D5NA

