

Providing cost-effective print management across your enterprise—and across the world.



IBM Infoprint Manager Interoperability

Highlights

Provide access to Infoprint Manager for AIX features from Windows NT environments

Manage and monitor from remote locations

Submit jobs to managed printers using familiar applications

Balance printer workload

Maximize processing capability of multiple servers

Extend and centralize job notification

Combining the power of AIX® technology with the flexibility of Microsoft Windows® 2000 and Windows NT® environments, IBM® Infoprint® Manager delivers centralized output management for small, medium and large enterprises with increasingly global operations.

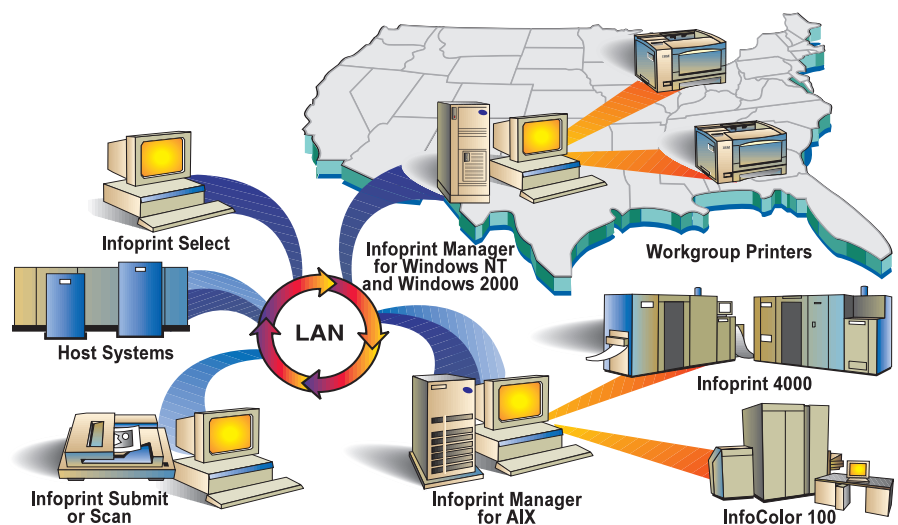
Consider the following scenario:

A large bank with regional branches administrates its printing at the central office. Before installing Infoprint Manager servers, print jobs were sent from the branch offices to the central location, scheduled, and sent back. Needless to say, network traffic was high and print delays caused by bottlenecks were prevalent. Now, with

Infoprint Manager for Windows NT and Windows 2000 installed at branch locations and an Infoprint Manager for AIX server at the central location, efficient print administration is possible. The print administrator simply creates logical destination objects to collect information needed for accounting and scheduling. The actual destination objects reside on the NT servers at the location where the jobs actually print. Local printing is now faster, huge jobs don't have to be transmitted over the network, and administration is centralized.

Configure, manage and monitor from anywhere

Infoprint Manager's easy-to-use graphical user interfaces enable



IBM Infoprint Manager delivers centralized output management for small, medium and large enterprises.

IBM's 24 x 7 customer service ensures reliable print operations around the clock.

centralized management of printers and jobs from anywhere on the network, even remote locations. Through these interfaces, you can:

- View, set or change the defaults and characteristics of both printers and jobs in your enterprise
- Monitor the status of printers and jobs
- Start, stop, delete, and move (reorder and resubmit) jobs
- Start, stop, forward space, back space, or shut down printers
- Interoperate with Infoprint Manager for AIX Version 3.2.1 servers
- Using Infoprint Select, a component of Infoprint Manager, users can access a greater number of printers from their current applications

Route your jobs to the right destinations

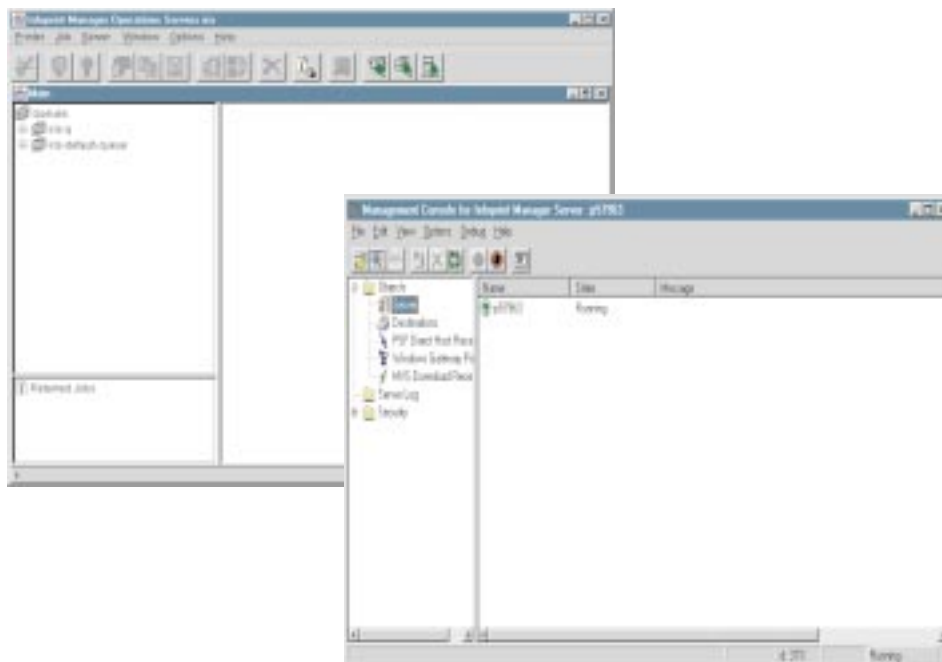
- Intelligent routing of jobs based on print job characteristics, with the ability to manually override

- Each printer schedules jobs using a combination of the following:
 - jobs with the highest priority first
 - jobs in the order they are submitted
 - jobs in order of size, longest first
 - jobs in order of size, shortest first
- Match jobs to destinations based on a rich set of routing characteristics, such as:
 - job size (select short jobs for higher cost-per-page printers)
 - data stream resolution (240, 300, and 600 dpi supported)
 - job group (batch)
 - printer model or name
 - media type (legal, letter, etc.)
- Control when jobs print by specifying:
 - a print-after time
 - a time by which the job must print or be automatically discarded
 - a job group (batch)
- Jobs are scheduled only to destinations that support their characteristics, such as duplex and document format, which is determined automatically

- Schedules jobs only to destinations currently accepting jobs to maximize printer productivity

Balance printer workload

- Configure your printing environment to balance workload and maximize utilization
- Easily reroute jobs while changing supplies or performing preventative maintenance
- Prevent loss of jobs by:
 - configuring to hold jobs that fail
 - automatically disabling printers with problems
- Transform data and print concurrently
- Save processed (RIPped) files for efficient reprinting or for printing multiple copies
- Configure to retry jobs automatically following network failures
- Pool (cluster) printers to maximize utilization
- Support multiple formats on the same printer



Maximize processing capability of multiple servers

Keep servers busy and maximize productivity by off-loading work of heavily queued servers to remote servers.

Increase Access

Increase access to Infoprint Manager for AIX features and supported printers from the Infoprint Manager for Windows NT and Windows 2000 environments.

- Allows access to AIX-only transforms
- Print to and manage printers not yet supported on the Windows NT and Windows 2000 platforms
- Interoperate with other features of Infoprint Manager for AIX, such as support for SAP, email, fax, Tivoli and web access

Scalability

Infoprint Select, a component of Infoprint Manager, enables users on the network to access a greater number of printers from their current applications. Use Infoprint Select to send jobs from workstations on the LAN to printers controlled by Infoprint Manager for AIX or Infoprint Manager for Windows NT and

Windows 2000. Furthermore, you can improve throughput and optimize resource use by distributing certain Infoprint Manager tasks across different servers. Different Windows NT and Windows 2000 and AIX servers can:

- Process commands and receive job submission requests
- Manage and schedule jobs for printing
- Drive printers

For example, you can add additional Infoprint for Windows NT and Windows 2000 servers that will drive printers that are fed from the original server supervising the work flow. Infoprint Manager provides centralized management by allowing you to manage and monitor all these servers from a single location.

To learn more about the distributed, interoperable Infoprint Manager print solution, contact your IBM Printing Systems representative or call the Printer Selection Center at (800) 358-6661, and select option 3.

IBM Infoprint Manager at a glance

Prerequisites

Infoprint Manager for Windows NT and Windows 2000

- Workstation with 450 MHz Pentium processor, 128 MB RAM, 10GB hard disk, and graphics display
- Microsoft Windows 2000 (Professional, Server or Terminal Server) or Microsoft Windows NT Version 4.0 (Workstation, Server or Terminal Server) at Service Pack level 4 or higher
- TCP/IP printer connection (Token-Ring, Ethernet, FDDI)

Infoprint Manager for AIX

- IBM RS/6000® with AIX operating system 4.21 or 4.3
 - Use of AIXwindows (motif) required for graphic version of Infoprint Manager
 - TCP/IP printer connection (Token-Ring, Ethernet, FDDI)
-



© International Business Machines Corporation 2000

IBM Printing Systems
Dept. HT7/001H
P.O. Box 1900
Boulder, CO 80301-9191

Printed in North America
1-00

All Rights Reserved

References in this publication to IBM products or services do not imply that IBM intends to make them available outside North America.

Visit our home page at

www.ibm.com/printers

The following terms are trademarks of IBM Corporation in the United States and/or other countries: IBM, AIX, InfoColor, Infoprint and RS/6000.

Microsoft, Windows, and Windows NT are registered trademarks of Microsoft Corporation.

Adobe and PostScript are registered trademarks of Adobe Systems, Incorporated.

Other company, product and service names may be trademarks or service marks of others.