

Chapter 9. AFP Manager

This section provides an overview of the AFP Manager included in Client Access express V5R1. The AFP manager is a new graphical interface for managing and creating AFP resources on the iSeries server.

This section does not attempt to provide complete information about the AFP Manager. Many functions are detailed further in related chapters throughout this book. The AFP Manager is used as a vehicle other than green screens for most of the new functions. The following topics are described in this section:

- AFP Manager overview
- Import AFP resources
- Installing and starting the AFP Manager

The following topics are described in different chapters:

- Chapter 1, "Font Mapping Table" on page 4
- Chapter 75, "PSF configuration object" on page 130

An overview of the AFP Manager is shown in the Figure 87.

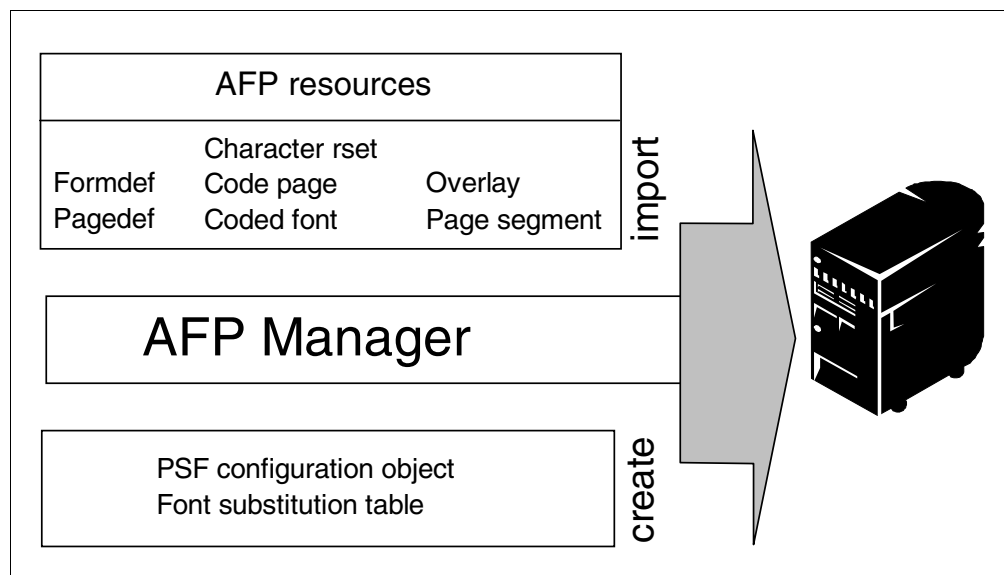


Figure 87. AFP Manager overview

Three different functions are available in the AFP Manager:

- **Import AFP resources to the iSeries:** This function provides an easy way to transfer AFP resources from a PC, folder, or IFS to the iSeries server. Three different steps were required in the past. The AFP Manager allows you to upload resources in only one step and create the iSeries AFP object in a library. The following resources are supported:
 - Code page
 - Coded font
 - Font character set
 - Form definition
 - Overlay

- Page definition
- Page segment

The Section 1.7, “Convert TIFF, GIF and JPEG images to AFP objects” on page 25 use the import function to transfer Page segment and Overlays to the iSeries.

- The AFP Manager provides a graphical interface environment for creating and maintaining PSF configuration objects. The PSF configuration object is used to manage Print Services Facility (PSF) functions on the iSeries server. New functions of the InfoPrint Server for iSeries, such as PDF and e-mail, must be configured in the PSF configuration object under V5R1. Refer to Chapter 7, “PSF configuration object” on page 129, and Section 1.5, “AFP to PDF” on page 24, for additional informations.
- Create and manage a Font substitution table. This function is described in Chapter 1, “Font Mapping Table” on page 3.

The following sections describe how to install and start the AFP Manager.

9.1 Importing AFP resources from a PC to the iSeries server

This sections explains how to import AFP resources from a PC to the iSeries server. Figure 88 shows the AFP Manager window.

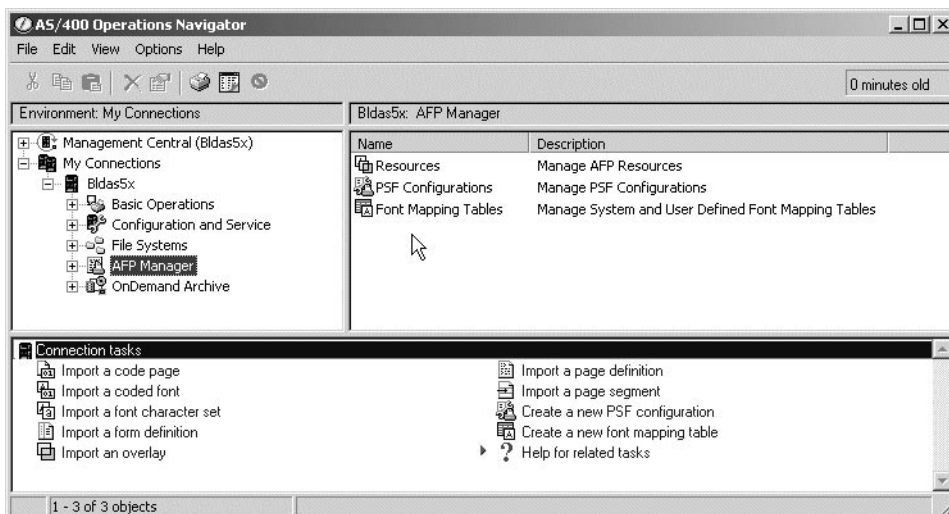


Figure 88. AFP Manager

The AFP manager import function provides an upload function for AFP resources. Choose the corresponding import function for your resource. If your PC file does not match the requested format, no resource is created.

The AFP manager invokes the native command to upload the resource and create the iSeries object. The temporary files created for this process are deleted at the end of each upload request. Figure 89 shows the Import a Page Segment window. The fields are explained in the list that follows.

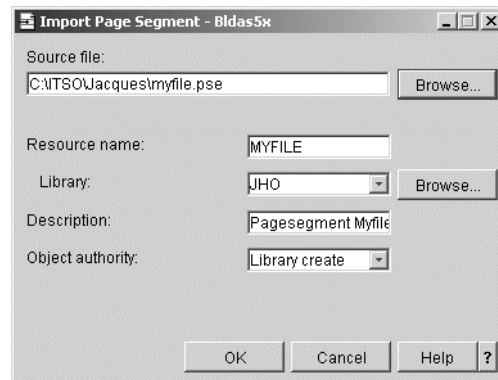


Figure 89. Import a Page Segment window

- Source file** Specify the name of the file you want to import. Click **Browse...** to search for the file. The file must be in a supported format and correspond to the selected AFP resource.
- Resource name** Specify a name for the resource you want to create. The name cannot be more than eight characters long and must meet AS/400 name requirements.
- Library** Specify the library where the new resource is located. You can store it in the current library or a different library. To specify a different library, enter the name or click **Browse...** to search for a library. The library you specify must exist.
- Description** Enter a description of the resource you want to create. This parameter is recommended but not required. The description cannot contain more than 50 characters.
- Library create** When the library containing this object was created on the server using the Create Library command (CRTLIB), a value was specified on the Create authority prompt (CRTAUT parameter). When you select Library create as the object authority, PSF/400 uses that value to determine the authority for this object. If the value specified on the Create authority prompt is changed, the new value does not affect any existing objects.

9.2 Installing the AFP Manager

AFP Manager is a plug-in to Operations Navigator, a component of Client Access Express V5R1. You require AFP Manager to perform many of the tasks in this section. You can install AFP Manager using three methods:

- When you install Client Access Express, select full install.
- When you install Client Access Express, select custom install. From the Component Selection dialog, select AFP Manager.
- Add AFP Manager after installation. Follow these steps to add AFP Manager after installation

The following section describes the installation with the selective set up. Double-click the **Client Access Express** icon on your workspace to start.

Figure 90 shows the Client Access Express window.

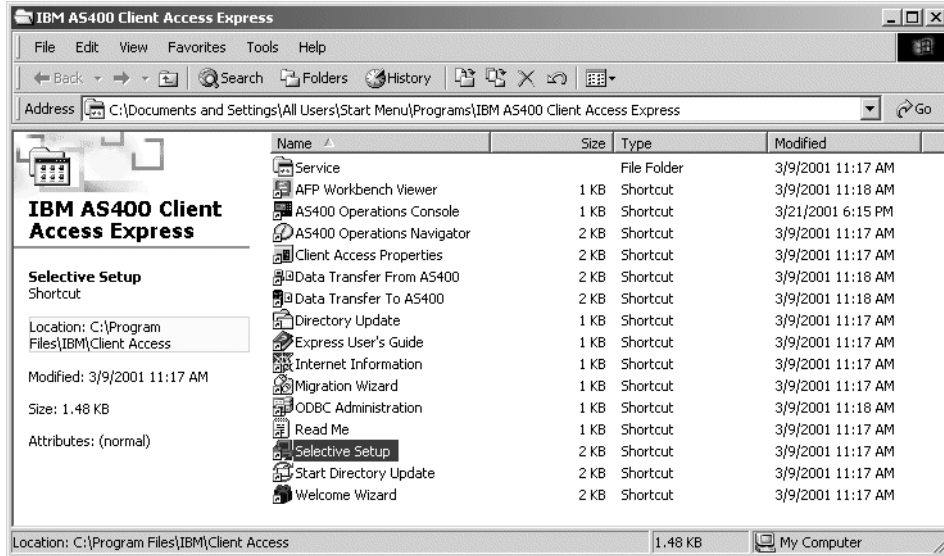


Figure 90. Client Access Express window

Select the **Selective Setup** in the Client Access Express window. This command allows you to install components that were not initially installed. Figure 91 shows all installed and installable components. Use the rulers to scroll down through the different selections.

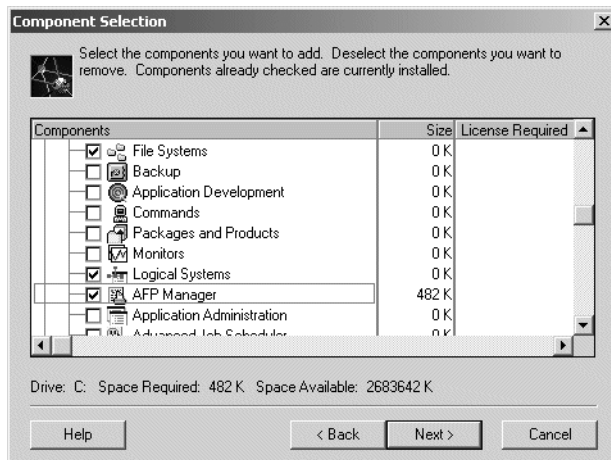


Figure 91. Component Selection

Select the AFP manager component. The installation shield guides you through the installation. Complete the installation and start the AFP Manager by following the instructions in Chapter 9.3, "Start the AFP Manager" on page 162.

9.3 Start the AFP Manager

This section describes how to start the AFP Manager. Creating and managing the PSF configuration object is described in Chapter 7, "PSF configuration object" on page 129.

The first step is to start Client Access Express. Select the corresponding Icon on your desktop. The icon becomes available after the installation of AFP manager.

Figure 92 shows the Client Access Express Window as it should appear on your display:

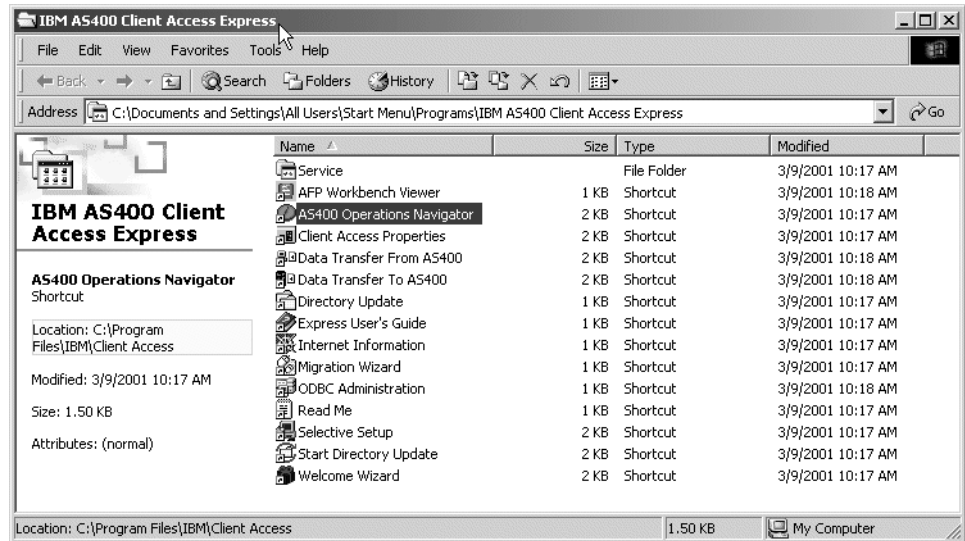


Figure 92. Client Access Express window

Invoke Operations Navigator by double-clicking the component name. The Operations Navigator window appears as shown in Figure 93.

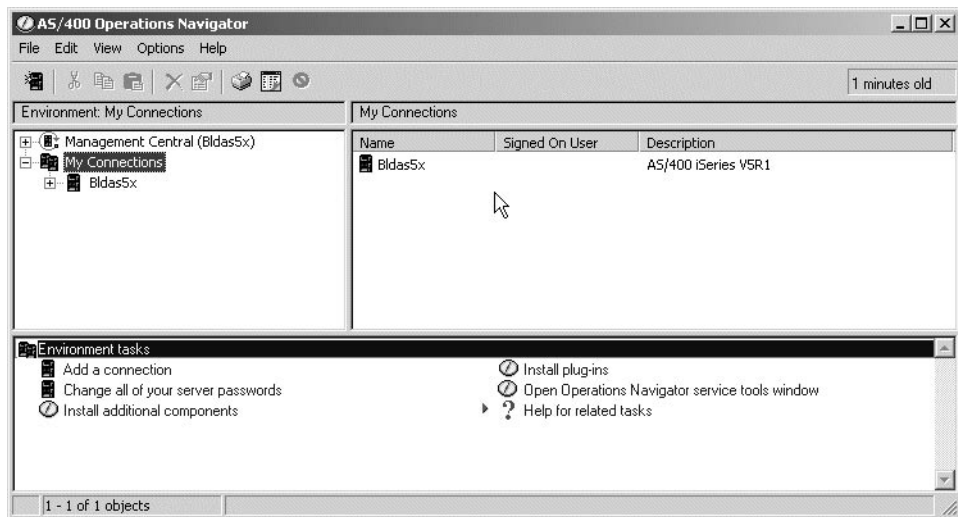


Figure 93. Operations Navigator window

Select the iSeries servers with which you want to work. The number of systems shown in the windows depends on your environment.

Figure 94 shows the Operations Navigator window with the available components.

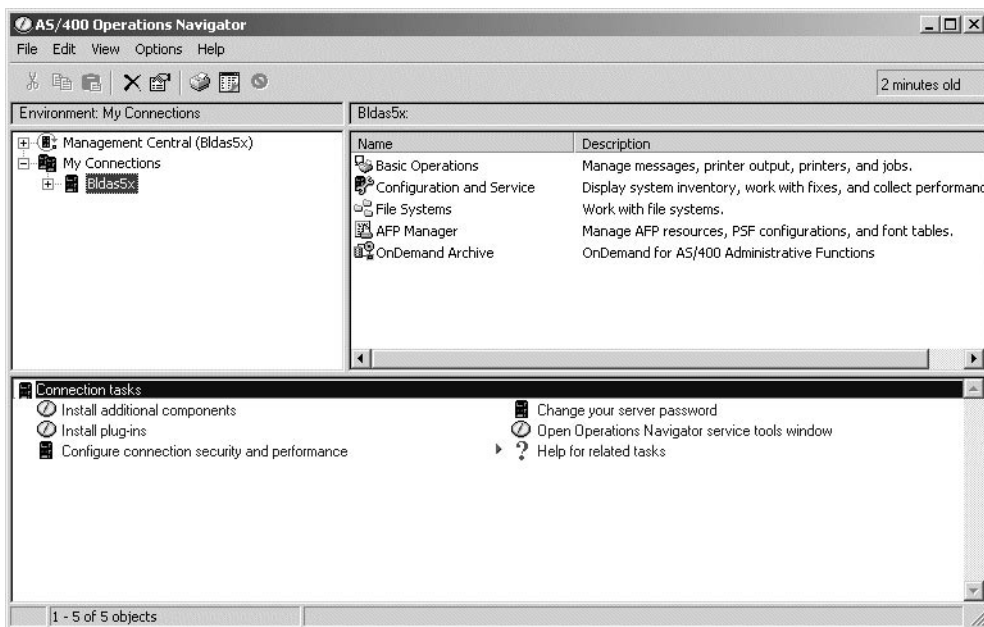


Figure 94. Selecting your system in Operations Navigator

Invoke the AFP Manager by double-clicking the component name. Figure 95 shows the AFP Manager.

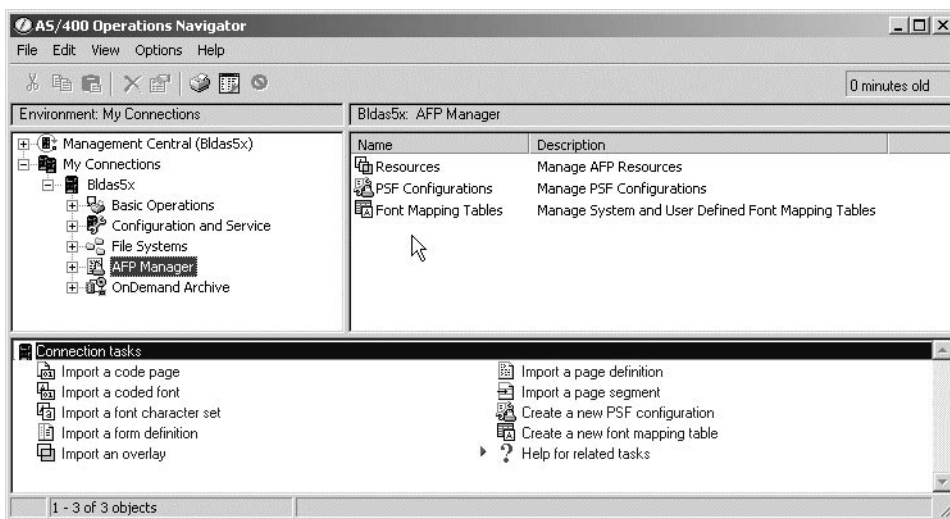


Figure 95. AFP Manager window

The AFP Manager provides the ability to import AFP resources from a PC to your iSeries server and to create specific AFP objects. Different sections of this book use functions of the AFP manager, or objects are created with the AFP Manager. The related sections are:

- Chapter 7, “PSF configuration object” on page 129
- Chapter 1, “Font Mapping Table” on page 3
- Chapter 2.8.1.2, “Upload your AFP resources with the AFP Manager” on page 28

9.4 Displaying objects from other libraries

The AFP Manager displays the user library by default. This section shows how to select other libraries or use common iSeries Libraries lists.

Figure 96 shows the list of objects from the user library only.

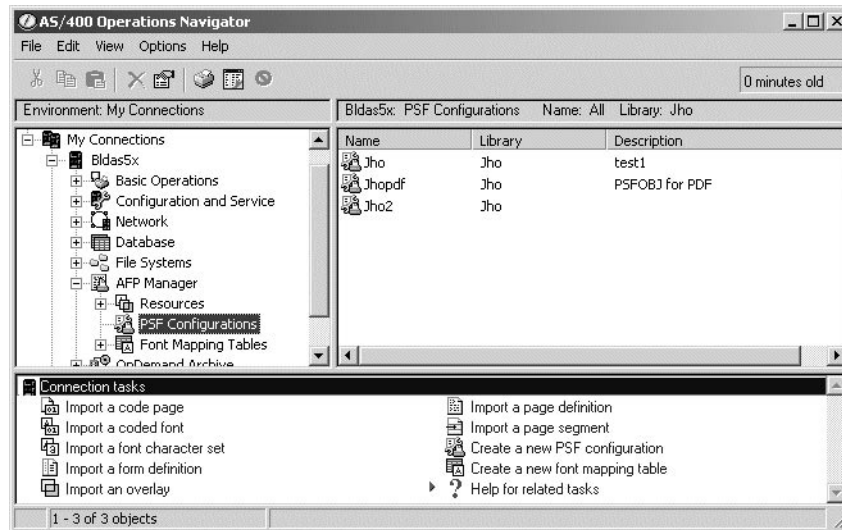


Figure 96. AFP Manager objects

Open the option menu in the menu task bar and select the **Include** option. The include window appears as shown in Figure 97.

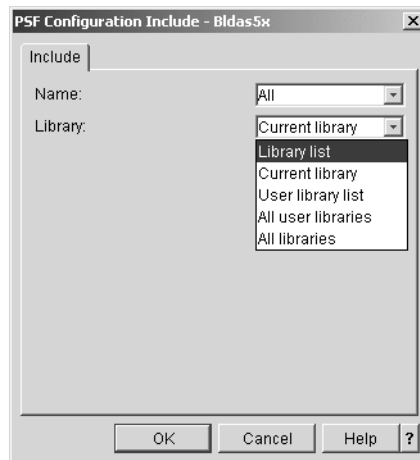


Figure 97. Include window

Click the right arrow to open the pull-down window. Choose one selection and confirm by clicking **OK**. The new selection appears as shown in Figure 98.

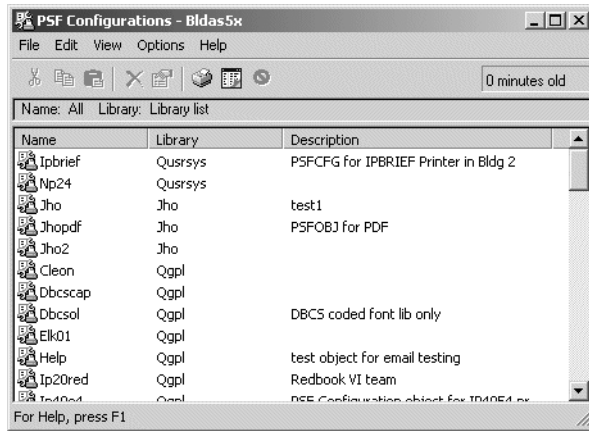


Figure 98. AFP Manager object list