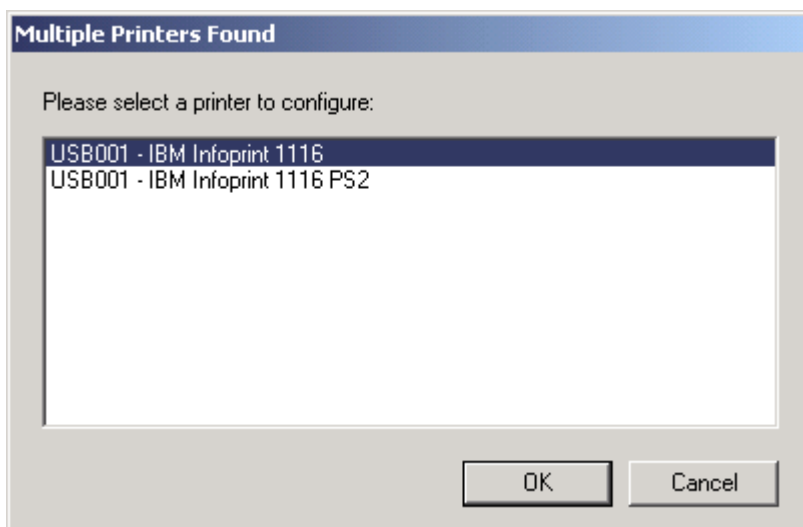


# IBM Infoprint 1116 Setup Utility

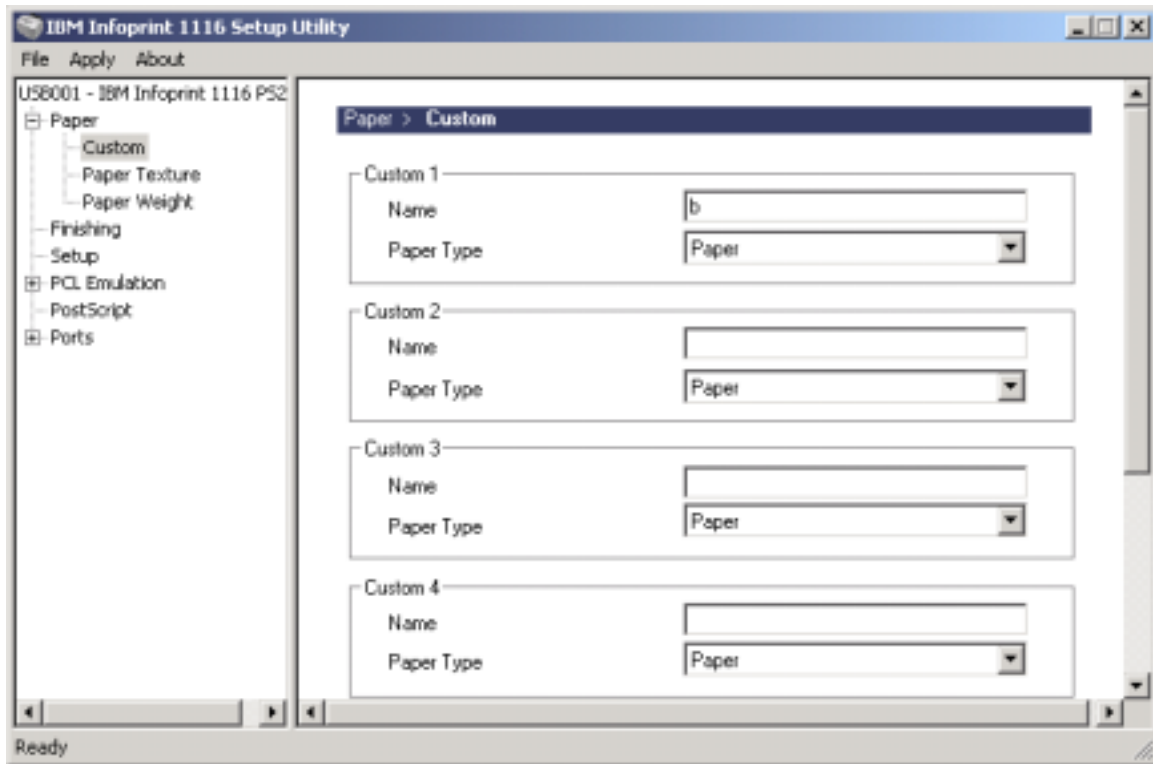
(Machine Type 4516)

The IBM Infoprint 1116 Setup Utility is a simple tool that can be used to configure specific settings on the IBM Infoprint 1116. Most users will not have a need for this utility. In order to use the utility, the printer must be locally attached via either USB or Parallel and the driver must be installed. The following screen shots provide an overview of the utility.

This screen prompts the user to select which printer to configure. Here the user is being asked whether to use PCL or PS.



The next screen provides a tree view of selections for the types of settings that can be changed. Once the user clicks on one of the settings on the right hand side the options appear on the left.



## Settings Supported by IBM Infoprint 1116 Setup Utility

- Paper Settings
  - Blank Pages
  - Separator Sheets
  - Separator Source
  - Paper Texture per Paper Type
  - Paper Weight per Paper Type
  - Paper Size Tray 1
  - Paper Size Tray 2
  - Paper Type Tray 1
  - Paper Type Tray 2
- Custom Settings
  - Media Name
  - Media Type
- PCL Default Settings
  - A4 Width
  - Lines Per Page
  - Auto CR
  - Auto LF
  - Manual Env Renumber
  - Manual Paper Renumber

- Tray Renumbering
- PS/PPDS Default Settings
  - Feed Timeout
  - Job Timeout
  - Wait Timeout
  - Font Priority
- Setup Defaults
  - Printer Language (i.e. Emulation: PCL, PS)
  - Jam Recovery
  - Print Area
  - Resolution Reduction
  - Resource Save
  - Power Saver
  - Print Timeout
  - Auto Continue
  - Printer Display Language (Test Page/Menus Page)
  - Reset Control
  - Print Buffer Control
- Finisher Defaults
  - Toner Alarm
  - PQET
- Port Settings
  - PCL Smartswitch for Parallel
  - PCL Smartswitch for USB
  - PS Smartswitch for Parallel
  - PS Smartswitch for USB
  - Honor Init
  - Parallel Mode 1
  - Parallel Mode 2
  - Parallel Advanced Status
  - Parallel Protocol (Fastbytes, etc)

## Settings NOT Supported by IBM Infoprint 1116 Setup Utility

- Paper Settings
  - Paper Source
  
- PCL Default Settings
  - Orientation
  - Font Source (used/not used)
  - Font Source (all/not all)
  - Font Name
  - Symbol Set
  - Point/Pitch Size
  
- PS/PPDS Default Settings
  - Picture Grade
  - Print PS Error
  
- Setup Defaults
  - Page Protect
  
- Finisher Defaults
  - Number of Copies
  - Collation
  - Toner Saver
  - Resolution
  - Print Darkness
  - N-up Print
    - ✓ Number of Pages
    - ✓ Order
    - ✓ Border
    - ✓ View
  - Image Orientation
  - IET

**The following is a list of items to keep in mind while using this utility.**

1. There is a very limited help function.
2. There is No bidi support over Parallel on Windows NT/2000/XP.
3. The Parallel Options show up for IBM Infoprint 1116 network model even though it does not ship with parallel.
  - If user attempts to change one of these settings in items three or four, no error message will be displayed – it will appear as though the setting was taken, however, the printer discards the setting and changes nothing.
4. The printer choice dialog will show a listing for each printer driver installed on the system that is pointing to a USB or Parallel port regardless of whether there is a printer attached or even if the printer objects are pointing to the same port.
5. A reboot will be required on Win 9x if the MFC42.dll file is updated by our install.
6. There is no option to restore factory default settings.
7. In order for the user to change the Printer Language to PPDS he/she must first turn PPDS on in the printer. If the user tries to choose this setting without first activating PPDS on the printer, the printer will discard the request and changes nothing.