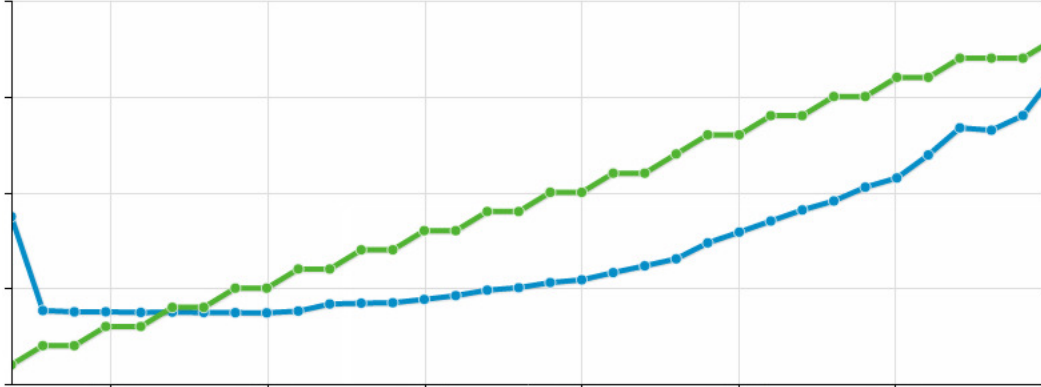




- 1. What two items are managed by the developer in a Platform as a Service (PaaS) service model?**
  - A. data
  - B. storage
  - C. application
  - D. networking
  - E. operating system
- 2. What are two ways to start, stop, bind, and unbind services for applications running in IBM Bluemix PaaS?**
  - A. using the Load Balancer
  - B. using the Cloud Controller
  - C. using cf command-line tool
  - D. using the Droplet Execution Agent
  - E. using the Cloud Foundry dashboard
- 3. In IBM Bluemix PaaS, what is the role of a buildpack in staging an application?**
  - A. to provide app framework and runtime support on the Droplet Execution Agent
  - B. push application code from the development workstation to IBM Bluemix PaaS
  - C. notify Health Manager of successful application instance start
  - D. start application request handling by sending a status message to the Router
- 4. What file lists the module dependencies for a Node.js application?**
  - A. app.js
  - B. pom.xml
  - C. manifest.yml
  - D. package.json
- 5. Based on the Twelve-Factor App methodology, how should an developer handle their application's log output on IBM Bluemix PaaS?**
  - A. write as an unbuffered stream to stdout
  - B. write to the application runtime file system
  - C. write to a logging service external to the application
  - D. follow the logging best practices for each specific runtime
- 6. A developer runs a load test on an application in IBM Bluemix PaaS and receives the**

following results:



Green graph shows the Number of Virtual Users  
Blue graph shows Virtual User Load Time.

The application requirements stipulate a constant response time under load. The application is configured with caching, scaling and other managed services. What should be investigated to understand why the application is not scaling?

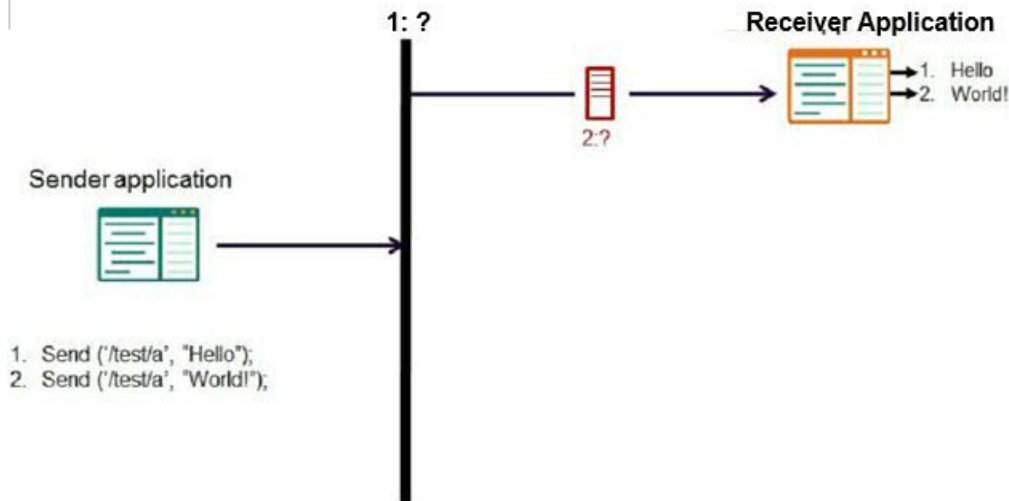
- A. Review the logs to see if the application has stopped.
- B. Review Session Cache Service for misses.
- C. Review the Auto-Scaling Service Scaling History panel for evidence of scaling activity during load test.
- D. Review the SSO Service logs for failed external authentications.

7. A developer is going into production with a consumer web application in IBM Bluemix PaaS. The developer is keen to understand how the application is performing to maximize customer retention.

To investigate a complaint on performance, the developer uses the Monitoring and Analytics service. In addition to metrics such as CPU usage, memory usage and throughput, what other useful metric is available from the service?

- A. context interrupts
- B. disk space usage
- C. request response time
- D. number of network connection failures

8. Based on IBM MQ Light service for Bluemix concepts, what are the correct labels for 1:? and 2:? in the image?



- A. 1:Queue, 2:Topic
- B. 1:Topic, 2:Queue
- C. 1:Topic, 2:Destination
- D. 1:Queue, 2: Destination

9. Which is a key value pair service in IBM Bluemix?

- A. Data Cache
- B. DataWorks
- C. dashDB
- D. SQL database

10. Which statement is true regarding the ability to delete documents from a Cloudant database using the Cloudant Dashboard or API?

- A. Multiple documents can be deleted in one operation.
- B. Multiple documents can only be deleted with multiple operations.
- C. Cloned documents cannot be deleted unless the original document is removed beforehand.
- D. Documents can be marked for deletion, but are discarded only when the database is deleted.

11. A development team is using the agile process and has a series of work items that need to be prioritized in order to plan their first sprint. Which IBM Bluemix DevOps Services Track & Plan feature would best meet the team's needs?

- A. Scrum
- B. Backlog
- C. Project Planner
- D. Iteration Planner

**Answer Key:**

1. AC
2. EC
3. A
4. D
5. A
6. C
7. C
8. C
9. A
10. A
11. B