

# IBM Enterprise2013 CICS Explorer for z/VSE



# Enterprise2013

## Trademarks

The following are trademarks of the International Business Machines Corporation in the United States and/or other countries.

**IBM\***  
**IBM Logo\***

\* Registered trademarks of IBM Corporation

The following are trademarks or registered trademarks of other companies.

Adobe, the Adobe logo, PostScript, and the PostScript logo are either registered trademarks or trademarks of Adobe Systems Incorporated in the United States, and/or other countries. Cell Broadband Engine is a trademark of Sony Computer Entertainment, Inc. in the United States, other countries, or both and is used under license therefrom.

Java and all Java-based trademarks are trademarks of Sun Microsystems, Inc. in the United States, other countries, or both.

Microsoft, Windows, Windows NT, and the Windows logo are trademarks of Microsoft Corporation in the United States, other countries, or both.

INFINIBAND, InfiniBand Trade Association and the INFINIBAND design marks are trademarks and/or service marks of the INFINIBAND Trade Association.

Intel, Intel logo, Intel Inside, Intel Inside logo, Intel Centrino, Intel Centrino logo, Celeron, Intel Xeon, Intel SpeedStep, Itanium, and Pentium are trademarks or registered trademarks of Intel Corporation or its subsidiaries in the United States and other countries.

UNIX is a registered trademark of The Open Group in the United States and other countries.

Linux is a registered trademark of Linus Torvalds in the United States, other countries, or both.

ITIL is a registered trademark, and a registered community trademark of the Office of Government Commerce, and is registered in the U.S. Patent and Trademark Office.

IT Infrastructure Library is a registered trademark of the Central Computer and Telecommunications Agency, which is now part of the Office of Government Commerce.

\* All other products may be trademarks or registered trademarks of their respective companies.

### Notes:

Performance is in Internal Throughput Rate (ITR) ratio based on measurements and projections using standard IBM benchmarks in a controlled environment. The actual throughput that any user will experience will vary depending upon considerations such as the amount of multiprogramming in the user's job stream, the I/O configuration, the storage configuration, and the workload processed. Therefore, no assurance can be given that an individual user will achieve throughput improvements equivalent to the performance ratios stated here.

IBM hardware products are manufactured from new parts, or new and serviceable used parts. Regardless, our warranty terms apply.

All customer examples cited or described in this presentation are presented as illustrations of the manner in which some customers have used IBM products and the results they may have achieved. Actual environmental costs and performance characteristics will vary depending on individual customer configurations and conditions.

This publication was produced in the United States. IBM may not offer the products, services or features discussed in this document in other countries, and the information may be subject to change without notice. Consult your local IBM business contact for information on the product or services available in your area.

All statements regarding IBM's future direction and intent are subject to change or withdrawal without notice, and represent goals and objectives only.

Information about non-IBM products is obtained from the manufacturers of those products or their published announcements. IBM has not tested those products and cannot confirm the performance, compatibility, or any other claims related to non-IBM products. Questions on the capabilities of non-IBM products should be addressed to the suppliers of those products.

Prices subject to change without notice. Contact your IBM representative or Business Partner for the most current pricing in your geography.



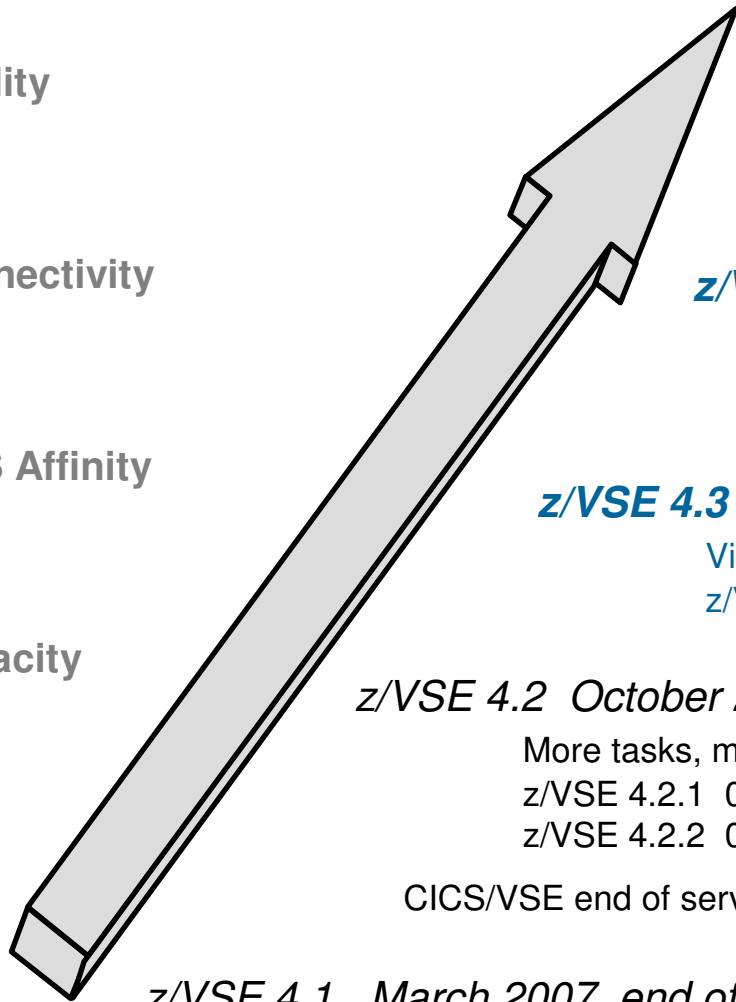
# z/VSE roadmap

Quality

Connectivity

z/OS Affinity

Capacity



## z/VSE Statement of Direction (SOD)

Install from DVD  
CICS Explorer update

### z/VSE 5.1.1 (+ Enhancements) GA 06/14/2013

TS1140, 64 bit I/O, openssl and database connector enhancements

### z/VSE 5.1 GA 11/25/2011

64 bit virtual, zEnterprise exploitation, z9 or higher  
z/VSE 5.1.1 06/2012: CICS Explorer, LFP in LPAR, database connector

### z/VSE 4.3 11/2010

Virtual storage constraint relief, 4 digit cuus  
z/VSE 4.3.1 08/2011, *end of support 05/31/2014*

### z/VSE 4.2 October 2008, end of service 10/31/2012

More tasks, more memory, EF for z/VSE 1.1, CPU balancing, SCRT on z/VSE  
z/VSE 4.2.1 07/2009 - PAV, EF for z/VSE 1.2  
z/VSE 4.2.2 04/2010 - IPv6/VSE 05/2010

CICS/VSE end of service 10/31/2012

### z/VSE 4.1 March 2007, end of service 04/30/2011

z/Architecture only, 64 bit real addressing, MWLC – full and sub-capacity pricing



## CICS Explorer for z/VSE

- Announced 04/03/2012, GA 06/15/2012
- CICS Explorer – The new face to CICS
  - New system management framework for CICS TS
  - Consists of CICS Explorer client and a CICS TS server extension
    - CICS Explorer client
      - Read-only capabilities
      - Eclipse-based user interface on workstation
        - Integrated Development Environment (IDE)
        - Workspace and plug-ins
        - Open source software (Eclipse Public License)
      - Connects to CICS TS via TCP/IP
      - Communication via HTTP requests
    - CICS Explorer server extension
      - Delivered as PTF for CICS TS for VSE/ESA 1.1.1
      - Available on z/VSE 5.1 only



## CICS Explorer for z/VSE

- CICS Explorer client supports
  - CICS TS for z/OS
  - CICS TS for VSE/ESA 1.1.1
- Provides a view of some CICS system management functions
- Displays details of CICS resources in definition views
- Administration operations are not supported
- Displays the resource attributes as of CEMT / CEDA
- Provides context and more detailed help



## CICS Explorer for z/VSE – supported operations

- Regions
- TCP/IP services
- ISC/MRO connections
- Terminals
- Transactions
- Transaction classes
- Programs
- Tasks
- Files
- Interval control requests
- Transient data (TD) and temporary storage (TS) queues
- Document templates



# CICS Explorer for z/VSE on the web - [www.ibm.com/vse](http://www.ibm.com/vse)

IBM Systems > Mainframe servers > Operating systems > z/VSE >

## Products and components

**z/VSE Components** | z/VSE Products

z/VSE V5.1 | z/VSE V4.3

- General
- z/VSE Central Functions
- **CICS Transaction Server**
- z/VSE Connectors
- TCP/IP
- z/VSE VTAPE

z/VSE is built on a heritage of ongoing refinement and innovation that spans more than four decades. It is designed to protect and leverage customer investments in z/VSE information assets. It brings the value of innovative IBM System z and IBM System Storage technology to z/VSE clients.

- ↓ CICS Transaction Server 5648-054
- ↓ CICS Explorer ←
- ↓ More Information about CICS

---

**CICS Transaction Server - 5648-054**

CICS Transaction Server 1.1.1 (5648-054) is part of VSE since VSE/ESA 2.4. CICS represents the current transaction monitor for the VSE operating system.

**Contact IBM**

- [Email z/VSE](#)
- [Find a Business Partner](#)
- Call IBM: 1-866-883-8901  
Priority code: 101AS13W

---

**Browse z/VSE**

- About z/VSE
- How to buy
- News & announcements
- Events
- Solutions
- Products & components
- Documentation
- Service & support
- Downloads
- Education
- Partners
- FAQ
- Contact z/VSE



# CICS Explorer for z/VSE on the web ...

IBM

↑ **Back to top**

→ Linux on IBM System z

→ z/OS

→ z/VM

License Charges

→ Recommended Service Level

→ IBM Shopz

---

### CICS Explorer

The new face of CICS Transaction Server for VSE/ESA V1.1

The CICS Explorer is the new systems management framework for CICS TS. It provides read-only capabilities to display CICS resources. The CICS Explorer consists of a CICS Explorer client and a CICS TS server extension. The CICS Explorer client can be downloaded from the [CICS Explorer web page](#), and the CICS TS server extension is delivered as CICS TS PTF. When used with CICS TS for VSE/ESA, it requires z/VSE V5.1, or later.

The CICS Explorer user guide provides some more information on the CICS Explorer installation and use.

📄 [IBM CICS Explorer User Guide V1.2b \(PDF, 500KB\)](#)

→ [IBM CICS Explorer download](#) ←

---

### Middleware

→ [Mainframe software for IBM System z](#)

→ [WebSphere \(integration and optimization\)](#)

→ [Information Management \(DB2, Informix, InfoSphere\)](#)


→ [Rational \(software and systems delivery\)](#)

→ [Tivoli \(service management\)](#)

→ [Lotus \(collaboration\)](#)

---

### Rate zEnterprise product

 **Tell us what you think**  
Your opinion matters and we want to hear from you. Write a review today!

↑ **Back to top**





# CICS Explorer for z/VSE on the web

IBM Software > Products > Application infrastructure > Transaction processing >

## CICS Explorer

IBM Software See what smarter software can do for you.

**Features** System requirements What's new

The integrated workbench for CICS with rich views, data and actions

### CICS Explorer downloads

[→ Learn more](#)

IBM® CICS® Explorer provides a common, intuitive, Eclipse-based rich client platform (RCP) for architects, developers, programmers, and administrators (all IT roles who work with CICS).

CICS Explorer integrates the visibility and control of the CICS runtime and its resource definitions within a single, consistent user interface. A wide range of IBM CICS and Problem Determination tools can be installed into the CICS Explorer from the IBM web-based repository.

**Considering a purchase?**

**Contact IBM**

- [✉ Email IBM](#)
- [📄 Request a quote](#)
- [📞 Or call us at: 1-877-426-3774](#)  
Priority code: 109HH03W

**Featured resources**

- [→ CICS Showcase](#)
- [📄 Ecosystem: CICS Explorer \(65KB\)](#)
- [→ Download: CICS Explorer](#) ←
- [→ CICS Explorer Forum](#)

IBM Problem Determination Tools for



## CICS Explorer for z/VSE client installation

- Download CICS Explorer zip file from the web
- Installation on the local workstation or remote network drive
- Configure the way it connects to the CICS system
  - Connect credentials, CICS system connection, ...
  - z/VSE supports the CICS Management Client Interface (CMCI) only



## CICS Explorer for z/VSE - CICS TS installation

- System requirements
  - CICS Explorer connects to z/VSE 5.1 only
  - Additional extended Dynamic Storage Area (DSA) required
    - Size depends on active CICS resources
    - Good start is 50 MB (with additional PTF)
    - May impact partition allocation
  - TCP/IP for VSE/ESA 1.5F or IPv6/VSE 1.1 or Linux Fast Path (IPv4 only)
- Install PTFs for CICS Explorer support (included in z/VSE 5.1.1 or higher)
  - CICS Management Client Interface (CMCI)
  - CICSplex System Management (CPSM)
  - Code will be installed into PRD1.BASE
  - No additional z/VSE Librarian definitions (LIBDEFs) required



## CICS Explorer for z/VSE - CICS TS installation ...

- CICS setup skeletons in ICCF library 59
  - CICS System Definitions (CSD)
  - Transaction security setup
  - DCT (Destination Control Table)
  - Define / initialize dataset EYUPARM (for debugging)
  
- Add DLBL / EXTENT / ASSGN statements for EYUPARM dataset to CICS start-up job
- Changing CICS SIT (SEC=YES, TCPIP=YES)
- Define TCPIP SERVICE
- Adjust EDSALIM, if additional DSA space required
- Define a conversion table – DFHCNV
- Install new groups using CEDA



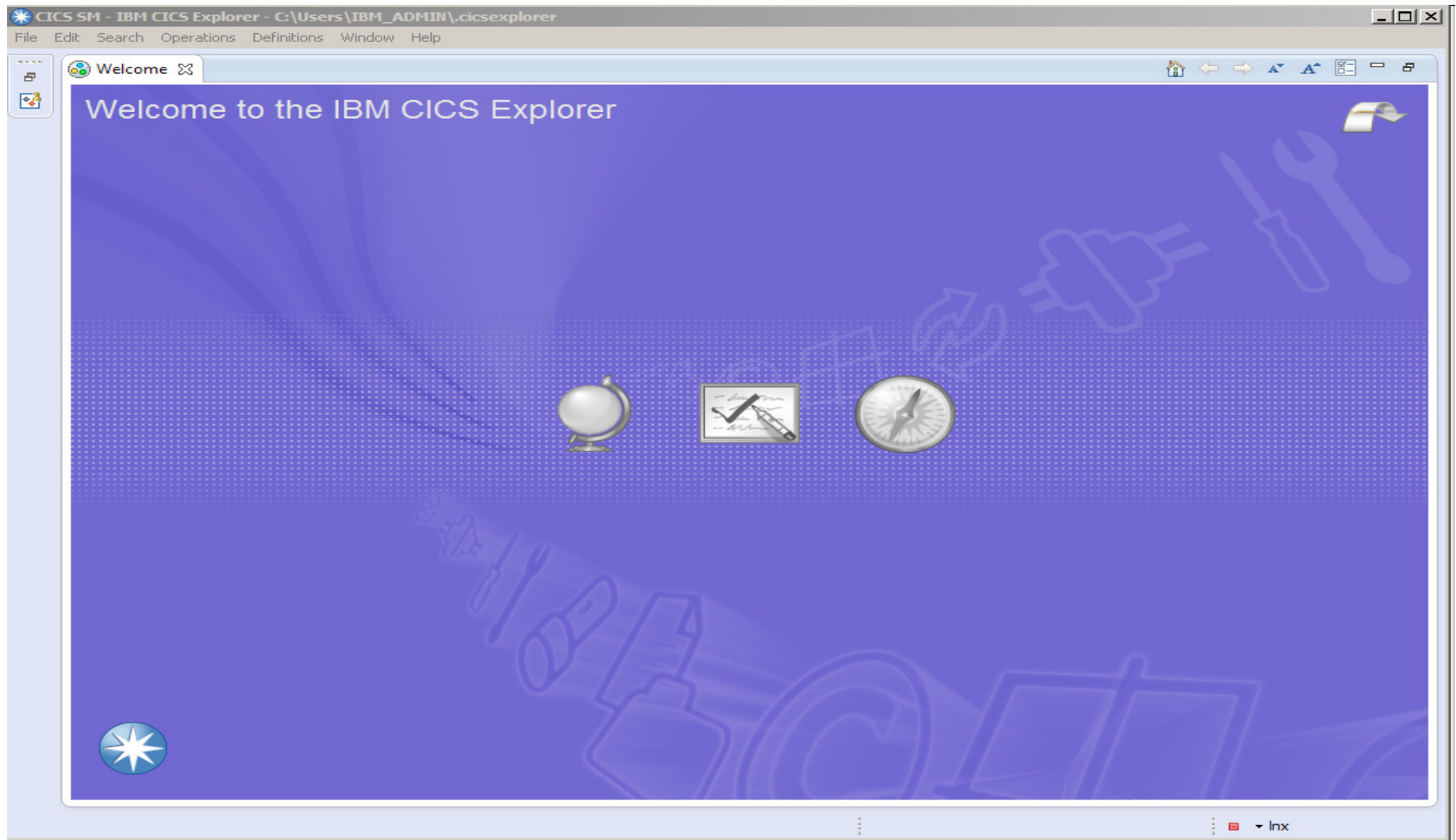
# CICS Explorer for z/VSE – start CORM transaction on server

```

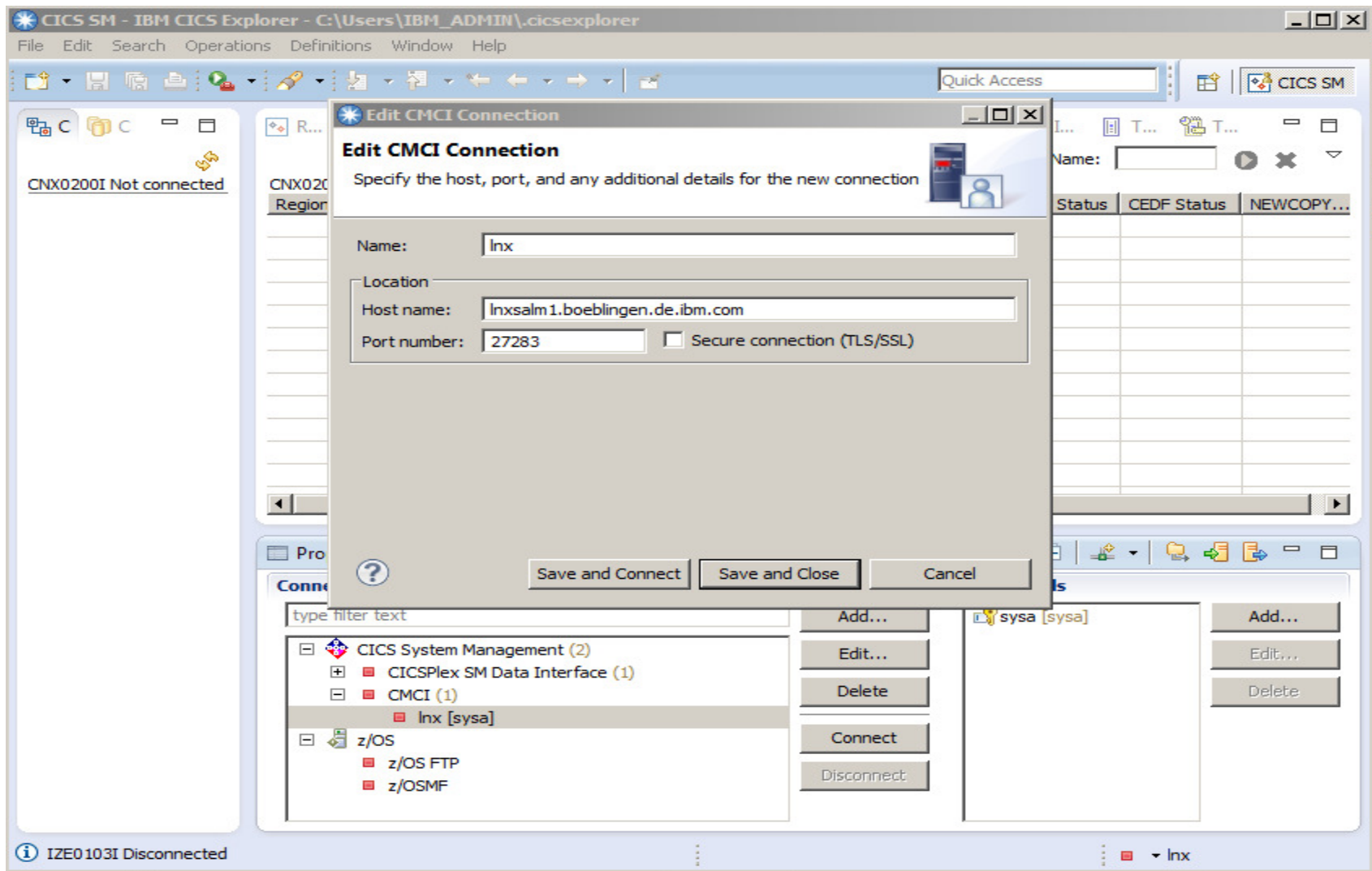
BOEVMSPB
File Edit View Communication Actions Window Help
SYSTEM: z/VSE z/VSE 5.1 TURBO (01) USER: SYS
VM USER ID:LNXSALM1 TIME: 15:35:14
F8 0488 DFHS00101I PRODCICS Sockets domain initialization has ended.
F8 0488 DFHWB1007 PRODCICS Initializing CICS Web environment.
F8 0487 BSD100I IPNRBSDC 01.05 F 09/12/11 18.37 032CE000 01E7
F8 0488 DFHWB1008 PRODCICS CICS Web environment initialization is complete.
F8 0488 DFHSI8430I PRODCICS About to link to PLT programs during the third
stage of initialization.
F8 0488 DFHSI8434I PRODCICS Control returned from PLT programs during the
third stage of initialization.
F8 0488 DFHSI1517 PRODCICS Control is being given to CICS.
F8 0488 DFHFC0208I PRODCICS
LSR pool 1 is being built dynamically by CICS because the following
are not defined: 'CI STPF' 'STDIMCC' 'MOVKEVI ENCTU' A delay
is possible. ← corm (transaction executed in CICS)
F8 0488 EYUNX0001I PRODCICS S...
F8 0488 EYUNX0030I PRODCICS SMSS successfully initiated from terminal A000
F8 0488 EYUXL0003I PRODCICS CPSM Version 420 SMSS startup in progress
F8 0488 EYUXL0119I PRODCICS CPSM Kernel loaded from EYU9XL02
F8 0488 EYUXL0005I PRODCICS Major Object created for KNL
F8 0488 EYUXL0005I PRODCICS Major Object created for TRC
F8 0488 EYUXL0005I PRODCICS Major Object created for MSG
F8 0488 EYUXL0005I PRODCICS Major Object created for SRV
F8 0488 EYUXL0005I PRODCICS Major Object created for CHE
F8 0488 EYUXL0005I PRODCICS Major Object created for DAT
F8 0488 EYUXL0005I PRODCICS Major Object created for QUE
F8 0488 EYUXL0005I PRODCICS Major Object created for MAS
==>
1=HLP 2=CPY 3=END 6=CNCL 7=BWD 8=FWD 9=EXPL 10=INP 11=PCUU 12=INFO
FILTER: ALL BWD MODE: REDISPLAY
MA a 28/006
    
```



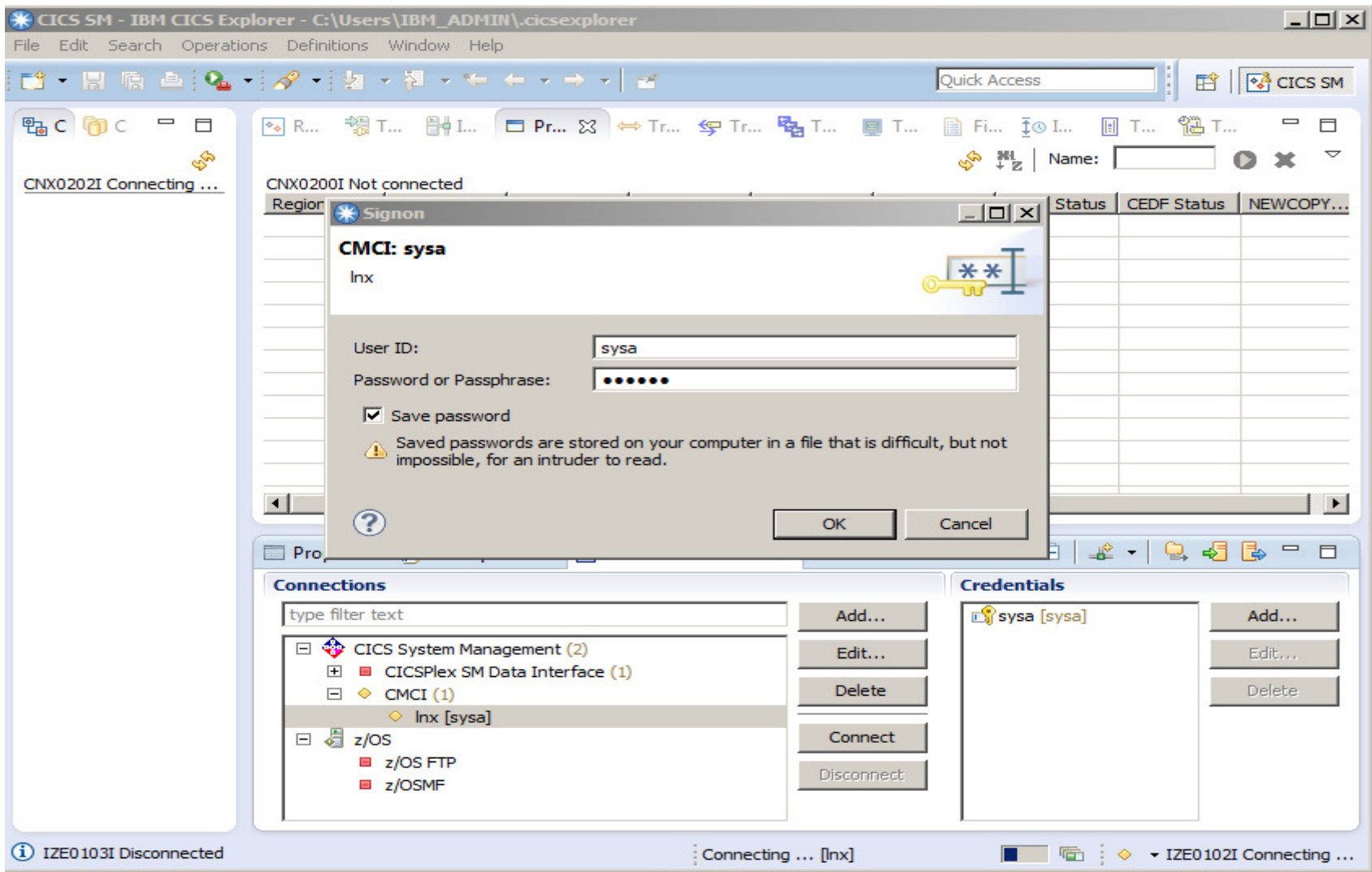
# CICS Explorer for z/VSE – welcome page



# CICS Explorer for z/VSE - configuration

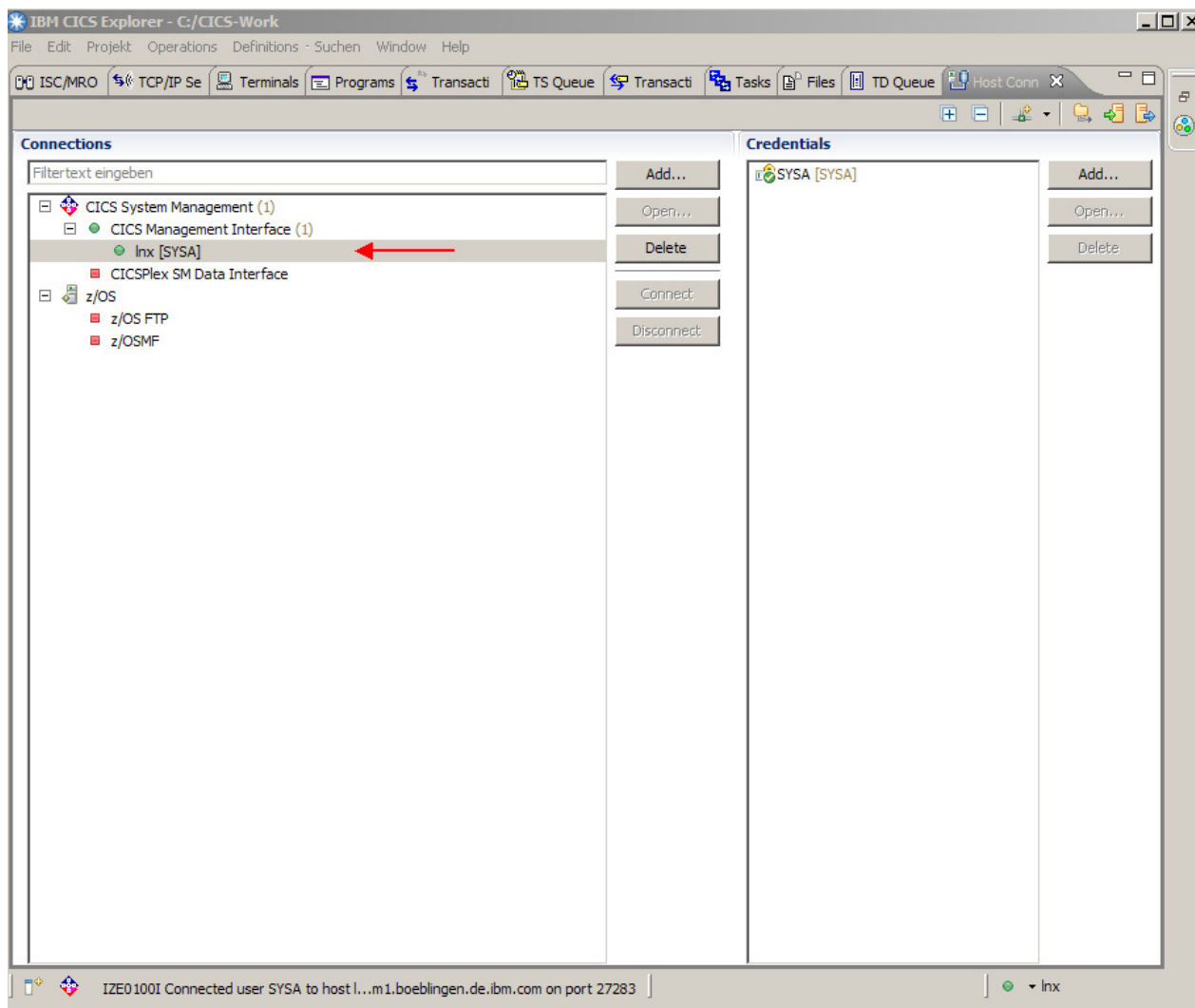


# CICS Explorer for z/VSE – sign-on





# CICS Explorer for z/VSE – connected



IBM CICS Explorer - C:/CICS-Work

File Edit Projekt Operations Definitions - Suchen Window Help

Regions x Job Name:

CNX0211I Context: PRODCICS. Resource: CICSRCN. 1 records collected at 28.09.2012 17:52:13

Region	Job Name	MVS System...	Task Count	CICS Status	CICS TS L...	CICS Rele...	Total CPU	Page In C...	Page Out ...	I/O Count
PRODCICS	CICS2	N/A	4	✓ ACTIVE		V111	0000:00:0...	N/A	N/A	10144

IZE0100I Connected user SYSA to host l...m1.boeblingen.de.ibm.com on port 27283 | Inx



IBM CICS Explorer - C:/CICS-Work

File Edit Projekt Operations Definitions Suchen Window Help

ISC/MRO Con TCP/IP Servic Terminals Programs Transactions TS Queues Transaction Cl Tasks Files TD Queues

CN0211I Context: PRODCICS. Resource: TERMNL. 62 records collected at 28.09.2012 18:02:25

Region	Name	Network Name	Acquire Status	Service Status	ATI Status	TTI Status	Session Status	User ID	Transaction ID
PRODCICS	-AAA	TMPLATE1	RELEASED	INSERVICE	ATI	TTI	NOCREATE	CICSUSER	
PRODCICS	-AAB	TMPLATE1	RELEASED	INSERVICE	ATI	TTI	CREATE	CICSUSER	
PRODCICS	-AAC	TMPLATE1	RELEASED	OUTSERVICE	ATI	TTI	CREATE	CICSUSER	
PRODCICS	-AAD	TMPLATE1	RELEASED	OUTSERVICE	ATI	TTI	CREATE	CICSUSER	
PRODCICS	-AAE	TMPLATE1	RELEASED	OUTSERVICE	ATI	TTI	CREATE	CICSUSER	
PRODCICS	-AAF	TMPLATE1	RELEASED	OUTSERVICE	ATI	TTI	CREATE	CICSUSER	
PRODCICS	-AAG	TMPLATE1	RELEASED	OUTSERVICE	ATI	TTI	CREATE	CICSUSER	
PRODCICS	-AAH	TMPLATE1	RELEASED	OUTSERVICE	ATI	TTI	CREATE	CICSUSER	
PRODCICS	-AAI	TMPLATE1	RELEASED	OUTSERVICE	ATI	TTI	CREATE	CICSUSER	
PRODCICS	-AAJ	TMPLATE1	RELEASED	OUTSERVICE	ATI	TTI	CREATE	CICSUSER	
PRODCICS	-AAK	TMPLATE1	RELEASED	OUTSERVICE	ATI	TTI	CREATE	CICSUSER	
PRODCICS	-AAL	TMPLATE1	RELEASED	OUTSERVICE	ATI	TTI	CREATE	CICSUSER	
PRODCICS	-AAM	TMPLATE2	RELEASED	INSERVICE	ATI	TTI	CREATE	CICSUSER	
PRODCICS	-AAN	TMPLATE3	RELEASED	INSERVICE	ATI	TTI	NOCREATE	CICSUSER	
PRODCICS	-AAO	TMPLATE3	RELEASED	INSERVICE	ATI	TTI	CREATE	CICSUSER	
PRODCICS	-AAP	TMPLATE3	RELEASED	OUTSERVICE	ATI	TTI	CREATE	CICSUSER	
PRODCICS	-AAQ	TMPLATE3	RELEASED	OUTSERVICE	ATI	TTI	CREATE	CICSUSER	
PRODCICS	-AAR	TMPLATE3	RELEASED	OUTSERVICE	ATI	TTI	CREATE	CICSUSER	
PRODCICS	-AAS	TMPLATE3	RELEASED	OUTSERVICE	ATI	TTI	CREATE	CICSUSER	
PRODCICS	-AAT	TMPLATE3	RELEASED	OUTSERVICE	ATI	TTI	CREATE	CICSUSER	
PRODCICS	-AAU	TMPLATE3	RELEASED	OUTSERVICE	ATI	TTI	CREATE	CICSUSER	
PRODCICS	-AAV	TMPLATE3	RELEASED	OUTSERVICE	ATI	TTI	CREATE	CICSUSER	
PRODCICS	-AAW	TMPLATE3	RELEASED	OUTSERVICE	ATI	TTI	CREATE	CICSUSER	
PRODCICS	-AAX	TMPLATE3	RELEASED	OUTSERVICE	ATI	TTI	CREATE	CICSUSER	
PRODCICS	-AAY	TMPLATE3	RELEASED	OUTSERVICE	ATI	TTI	CREATE	CICSUSER	
PRODCICS	CBRF	CBRF	RELEASED	INSERVICE	ATI	TTI	NOCREATE	CICSUSER	
PRODCICS	CERR		NOTAPPLIC	INSERVICE	NOATI	TTI	NOTAPPLIC	CICSUSER	
PRODCICS	CNSL		NOTAPPLIC	INSERVICE	ATI	TTI	NOTAPPLIC	CNSL	
PRODCICS	CO01		NOTAPPLIC	INSERVICE	ATI	TTI	NOTAPPLIC	CNSL	
PRODCICS	CO02		NOTAPPLIC	INSERVICE	ATI	TTI	NOTAPPLIC	CNSL	
PRODCICS	CO03		NOTAPPLIC	INSERVICE	ATI	TTI	NOTAPPLIC	CNSL	
PRODCICS	CO04		NOTAPPLIC	INSERVICE	ATI	TTI	NOTAPPLIC	CNSL	
PRODCICS	CO05		NOTAPPLIC	INSERVICE	ATI	TTI	NOTAPPLIC	CNSL	
PRODCICS	CO06		NOTAPPLIC	INSERVICE	ATI	TTI	NOTAPPLIC	CNSL	
PRODCICS	CO07		NOTAPPLIC	INSERVICE	ATI	TTI	NOTAPPLIC	CNSL	
PRODCICS	CO08		NOTAPPLIC	INSERVICE	ATI	TTI	NOTAPPLIC	CNSL	
PRODCICS	CO09		NOTAPPLIC	INSERVICE	ATI	TTI	NOTAPPLIC	CNSL	
PRODCICS	CO10		NOTAPPLIC	INSERVICE	ATI	TTI	NOTAPPLIC	CNSL	
PRODCICS	CO11		NOTAPPLIC	INSERVICE	ATI	TTI	NOTAPPLIC	CNSL	
PRODCICS	CO12		NOTAPPLIC	INSERVICE	ATI	TTI	NOTAPPLIC	CNSL	
PRODCICS	CO13		NOTAPPLIC	INSERVICE	ATI	TTI	NOTAPPLIC	CNSL	

IZE0100I Connected user SYSA to host l...m1.boeblingen.de.ibm.com on port 27283 | Inx



IBM CICS Explorer - C:/CICS-Work

File Edit Projekt Operations Definitions - Suchen Window Help

ISC/MRO Con TCP/IP Serv Terminal Programs Transactions TS Queues Transaction Cl Tasks Files TD Queues CICS SM

CNX0211I Context: PRODCICS. Resource: PROGRAM. 1.603 records collected at 28.09.2012 18:04:08

Region	Name	Status	Use Count	Concurrent Us...	Language	Share Status	CEDF Status	NEWCOPY Status
PRODCICS	\$EDTCPM	✓ ENABLED	0	0	C	N/A	CEDF	NOTREQUIRED
PRODCICS	\$EDTCPV	✓ ENABLED	0	0	C	N/A	CEDF	NOTREQUIRED
PRODCICS	ARXITCPU	✓ ENABLED	0	0	ASSEMBLER	N/A	CEDF	NOTREQUIRED
PRODCICS	BSTADMII	✓ ENABLED	0	0	ASSEMBLER	N/A	CEDF	NOTREQUIRED
PRODCICS	CEEBINT	✓ ENABLED	1	1	ASSEMBLER	N/A	CEDF	NOTREQUIRED
PRODCICS	CEEBNATX	✓ ENABLED	0	0	ASSEMBLER	N/A	CEDF	NOTREQUIRED
PRODCICS	CEECBLDY	✓ ENABLED	0	0	ASSEMBLER	N/A	CEDF	NOTREQUIRED
PRODCICS	CEECICIS	✓ ENABLED	1	1	ASSEMBLER	N/A	CEDF	NOTREQUIRED
PRODCICS	CEECDATX	✓ ENABLED	0	0	ASSEMBLER	N/A	CEDF	NOTREQUIRED
PRODCICS	CEECMI	✓ ENABLED	0	0	ASSEMBLER	N/A	CEDF	NOTREQUIRED
PRODCICS	CEECOPT	✓ ENABLED	1	1	ASSEMBLER	N/A	CEDF	NOTREQUIRED
PRODCICS	CEECRHP	✓ ENABLED	0	0	ASSEMBLER	N/A	CEDF	NOTREQUIRED
PRODCICS	CEECXITA	✓ ENABLED	1	1	ASSEMBLER	N/A	CEDF	NOTREQUIRED
PRODCICS	CEECXTAN	✓ ENABLED	1	1	ASSEMBLER	N/A	CEDF	NOTREQUIRED
PRODCICS	CEECZST	✓ ENABLED	0	0	ASSEMBLER	N/A	CEDF	NOTREQUIRED
PRODCICS	CEEDATE	✓ ENABLED	0	0	ASSEMBLER	N/A	CEDF	NOTREQUIRED
PRODCICS	CEEDATM	✓ ENABLED	0	0	ASSEMBLER	N/A	CEDF	NOTREQUIRED
PRODCICS	CEEDAYS	✓ ENABLED	0	0	ASSEMBLER	N/A	CEDF	NOTREQUIRED
PRODCICS	CEEDCOD	✓ ENABLED	0	0	ASSEMBLER	N/A	CEDF	NOTREQUIRED
PRODCICS	CEEDSHP	✓ ENABLED	0	0	ASSEMBLER	N/A	CEDF	NOTREQUIRED
PRODCICS	CEEDYWK	✓ ENABLED	0	0	ASSEMBLER	N/A	CEDF	NOTREQUIRED
PRODCICS	CEEENV	✓ ENABLED	0	0	ASSEMBLER	N/A	CEDF	NOTREQUIRED
PRODCICS	CEEEV000	✓ ENABLED	0	0	NOTDEFINED	N/A	CEDF	REQUIRED
PRODCICS	CEEEV001	✓ ENABLED	0	0	NOTDEFINED	N/A	CEDF	REQUIRED
PRODCICS	CEEEV002	✓ ENABLED	0	0	NOTDEFINED	N/A	CEDF	REQUIRED
PRODCICS	CEEEV003	✓ ENABLED	1	1	ASSEMBLER	N/A	CEDF	NOTREQUIRED
PRODCICS	CEEEV004	✓ ENABLED	0	0	NOTDEFINED	N/A	CEDF	REQUIRED
PRODCICS	CEEEV005	✓ ENABLED	1	1	ASSEMBLER	N/A	CEDF	NOTREQUIRED
PRODCICS	CEEEV006	✓ ENABLED	0	0	NOTDEFINED	N/A	CEDF	REQUIRED
PRODCICS	CEEEV007	✓ ENABLED	0	0	NOTDEFINED	N/A	CEDF	REQUIRED
PRODCICS	CEEEV008	✓ ENABLED	0	0	NOTDEFINED	N/A	CEDF	REQUIRED
PRODCICS	CEEEV009	✓ ENABLED	0	0	NOTDEFINED	N/A	CEDF	REQUIRED
PRODCICS	CEEEV010	✓ ENABLED	1	1	ASSEMBLER	N/A	CEDF	NOTREQUIRED
PRODCICS	CFFV011	✓ FNARFD	0	0	NOTDEFINED	N/A	CEDF	REQUIRED

IZE0100I Connected user SYSA to host l...m1.boeblingen.de.ibm.com on port 27283 | Inx



The screenshot displays the IBM CICS Explorer interface. The main window shows a table of programs for the context 'CNX0211I'. A red arrow points to the 'Programs' tab. An overlaid terminal window shows the output of the 'I PROG' command, listing program details such as name, length, language, and status.

Region	Name	Status	Use Count	Concurrent Us...	Language	Share Status	CEDF Status	NEWCOPY Status
PRODCICS	\$EDCTCPM	✓ ENABLED	0	0	C	N/A	CEDF	NOTREQUIRED
PRODCICS	\$EDTCPV	✓ ENABLED	0	0	C	N/A	CEDF	NOTREQUIRED
PRODCICS	ARXITCPU	✓ ENABLED	0	0	ASSEMBLER	N/A	CEDF	NOTREQUIRED
PRODCICS	BSTADMII	✓ ENABLED	0	0	ASSEMBLER	N/A	CEDF	NOTREQUIRED
PRODCICS	CEEBINT	✓ ENABLED	1	1	ASSEMBLER	N/A	CEDF	NOTREQUIRED
PRODCICS	CEEBNATX	✓ ENABLED	0	0	ASSEMBLER	N/A	CEDF	NOTREQUIRED
PRODCICS	CEECBLDY	✓ ENABLED	0	0	ASSEMBLER	N/A	CEDF	NOTREQUIRED
PRODCICS	CEECCICS	✓ ENABLED	1	1				
PRODCICS	CEECDATX	✓ ENABLED	0	0				
PRODCICS	CEECMI	✓ ENABLED	0	0				
PRODCICS	CEECOPT	✓ ENABLED	1	1				
PRODCICS	CEECRHP	✓ ENABLED	0	0				
PRODCICS	CEECXITA	✓ ENABLED	1	1				
PRODCICS	CEECXTAN	✓ ENABLED	1	1				
PRODCICS	CEECZST	✓ ENABLED	0	0				
PRODCICS	CEEDATE	✓ ENABLED	0	0				
PRODCICS	CEEDATM	✓ ENABLED	0	0				
PRODCICS	CEEDAYS	✓ ENABLED	0	0				
PRODCICS	CEEDCOD	✓ ENABLED	0	0				
PRODCICS	CEEDSHP	✓ ENABLED	0	0				
PRODCICS	CEEDYWK	✓ ENABLED	0	0				
PRODCICS	CEENV	✓ ENABLED	0	0				
PRODCICS	CEEEV000	✓ ENABLED	0	0				
PRODCICS	CEEEV001	✓ ENABLED	0	0				
PRODCICS	CEEEV002	✓ ENABLED	0	0				
PRODCICS	CEEEV003	✓ ENABLED	1	1				
PRODCICS	CEEEV004	✓ ENABLED	0	0				
PRODCICS	CEEEV005	✓ ENABLED	1	1				
PRODCICS	CEEEV006	✓ ENABLED	0	0				
PRODCICS	CEEEV007	✓ ENABLED	0	0				
PRODCICS	CEEEV008	✓ ENABLED	0	0				
PRODCICS	CEEEV009	✓ ENABLED	0	0				
PRODCICS	CEEEV010	✓ ENABLED	1	1				
PRODCICS	CFFFV011	✓ FNARI FD	0	0				

```

I PROG
STATUS: RESULTS - OVERTYPE TO MODIFY
Prog($EDCTCPM) Len(0000000) C Pro Ena Pri Ced
Res(000) Use(0000000000) Bel Uex Ful
Prog($EDTCPV) Len(0000000) C Pro Ena Pri Ced
Res(000) Use(0000000000) Bel Uex Ful
Prog(ARXITCPU) Len(0000000) Ass Pro Ena Pri Ced
Res(000) Use(0000000000) Bel Uex Ful
Prog(BSTADMII) Len(0000000) Ass Pro Ena Pri Ced
Res(000) Use(0000000000) Bel Cex Ful
Prog(CEEBINT ) Len(0000008) Ass Pro Ena Pri Ced
Res(001) Use(0000000001) Bel Uex Ful
Prog(CEEBNATX) Len(0000000) Ass Pro Ena Sha Ced
Res(000) Use(0000000000) Bel Uex Ful
Prog(CEECBLDY) Len(0000000) Ass Pro Ena Pri Ced
Res(000) Use(0000000000) Bel Uex Ful
Prog(CEECCICS) Len(0043464) Ass Pro Ena Sha Ced
Res(001) Use(0000000001) Bel Uex Ful
+ Prog(CEECDATX) Len(0000000) Ass Pro Ena Pri Ced
Res(000) Use(0000000000) Bel Uex Ful

SYSID=CIC2 APPLID=PRODCICS
RESPONSE: NORMAL TIME: 16.21.55 DATE: 09.28.12
PF 1 HELP 3 END 7 SBH 8 SFH 9 MSG 10 SB 11 SF
01/010
  
```



IBM CICS Explorer - C:/CICS-Work

File Edit Projekt Operations Definitions - Suchen Window Help

ISC/MRO Con TCP/IP Servic Terminals Programs **Transactions** TS Queues Transaction Cl Tasks Files TD Queues

CNX0211I Context: PRODCICS, Resource: LOCTRAN, 259 records collected at 28.09.2012 18:06:15

Region	Name	Status	Use Count	Program	Priority	Transaction ...	Purgeability	Dumping	Routing
PRODCICS	cler	ENABLED	0	CEL4RTO	1	DFHTCL00	NOTPURGEA...	TRANDUMP	STATIC
PRODCICS	disc	ENABLED	0	CLIENT01	1	DFHTCL00	NOTPURGEA...	TRANDUMP	STATIC
PRODCICS	emai	ENABLED	0	CLIENT01	1	DFHTCL00	NOTPURGEA...	TRANDUMP	STATIC
PRODCICS	ftp	ENABLED	0	FTP01	1	DFHTCL00	NOTPURGEA...	TRANDUMP	STATIC
PRODCICS	iccf	ENABLED	0	DTSJICF	1	DFHTCL00	NOTPURGEA...	TRANDUMP	STATIC
PRODCICS	lpr	ENABLED	0	CLIENT01	1	DFHTCL00	NOTPURGEA...	TRANDUMP	STATIC
PRODCICS	newc	ENABLED	0	EDCCNEWC	1	DFHTCL00	NOTPURGEA...	TRANDUMP	STATIC
PRODCICS	ping	ENABLED	0	CLIENT01	1	DFHTCL00	NOTPURGEA...	TRANDUMP	STATIC
PRODCICS	rexe	ENABLED	0	CLIENT01	1	DFHTCL00	NOTPURGEA...	TRANDUMP	STATIC
PRODCICS	ropc	ENABLED	0	EDCYCROP	1	DFHTCL00	NOTPURGEA...	TRANDUMP	STATIC
PRODCICS	teln	ENABLED	0	TELNET01	1	DFHTCL00	NOTPURGEA...	TRANDUMP	STATIC
PRODCICS	trac	ENABLED	0	CLIENT01	1	DFHTCL00	NOTPURGEA...	TRANDUMP	STATIC
PRODCICS	APVU	ENABLED	0	INWPCCOM	20	DFHTCL00	PURGEABLE	TRANDUMP	STATIC
PRODCICS	ARPS	ENABLED	0	DFH\$ARPS	1	DFHTCL00	NOTPURGEA...	TRANDUMP	STATIC
PRODCICS	CATA	ENABLED	1	DFHZATA	255	DFHTCL00	PURGEABLE	TRANDUMP	STATIC
PRODCICS	CATD	ENABLED	1	DFHZATD	255	DFHTCL00	PURGEABLE	TRANDUMP	STATIC
PRODCICS	CATR	ENABLED	1	DFHZATR	255	DFHTCL00	NOTPURGEA...	TRANDUMP	STATIC
PRODCICS	CCIN	ENABLED	0	DFHZCN1	254	DFHCOMCL	PURGEABLE	TRANDUMP	STATIC
PRODCICS	CDTS	ENABLED	0	DFHZATS	255	DFHTCL00	PURGEABLE	TRANDUMP	STATIC
PRODCICS	CEBR	ENABLED	0	DFHEDFBR	1	DFHTCL00	NOTPURGEA...	TRANDUMP	STATIC
PRODCICS	CECI	ENABLED	0	DFHECIP	1	DFHTCL00	PURGEABLE	TRANDUMP	STATIC
PRODCICS	CECS	ENABLED	0	DFHECSP	1	DFHTCL00	PURGEABLE	TRANDUMP	STATIC
PRODCICS	CEDA	ENABLED	0	DFHEDAP	1	DFHTCL00	PURGEABLE	TRANDUMP	STATIC
PRODCICS	CEDB	ENABLED	0	DFHEDAP	1	DFHTCL00	PURGEABLE	TRANDUMP	STATIC
PRODCICS	CEDC	ENABLED	0	DFHEDAP	1	DFHTCL00	PURGEABLE	TRANDUMP	STATIC
PRODCICS	CEDF	ENABLED	0	DFHEDFP	1	DFHTCL00	PURGEABLE	TRANDUMP	STATIC
PRODCICS	CEDX	ENABLED	0	DFHEDFP	1	DFHTCL00	PURGEABLE	TRANDUMP	STATIC
PRODCICS	CEGN	ENABLED	0	DFHCEGN	255	DFHTCL00	PURGEABLE	TRANDUMP	STATIC
PRODCICS	CEHP	ENABLED	0	DFHCHS	1	DFHTCL00	NOTPURGEA...	TRANDUMP	STATIC
PRODCICS	CEHS	ENABLED	0	DFHCHS	1	DFHTCL00	NOTPURGEA...	TRANDUMP	STATIC
PRODCICS	CEMS	ENABLED	0	DFHEMSP	1	DFHTCL00	NOTPURGEA...	TRANDUMP	STATIC
PRODCICS	CEMT	ENABLED	0	DFHEMTP	255	DFHTCL00	NOTPURGEA...	TRANDUMP	STATIC
PRODCICS	CEOS	ENABLED	0	DFHEMSP	1	DFHTCL00	NOTPURGEA...	TRANDUMP	STATIC
PRODCICS	CEOT	ENABLED	0	DFHEOTP	255	DFHTCL00	PURGEABLE	TRANDUMP	STATIC
PRODCICS	CEPW	ENABLED	0	DFHPSOP	254	DFHTCL00	NOTPURGEA...	TRANDUMP	STATIC
PRODCICS	CESC	ENABLED	0	DFHCESC	255	DFHTCL00	NOTPURGEA...	TRANDUMP	STATIC
PRODCICS	CESF	ENABLED	0	DFHSFP	1	DFHTCL00	PURGEABLE	TRANDUMP	STATIC
PRODCICS	CESN	ENABLED	0	DFHSNP	1	DFHTCL00	PURGEABLE	TRANDUMP	STATIC
PRODCICS	CEST	ENABLED	0	DFHESTP	255	DFHTCL00	PURGEABLE	TRANDUMP	STATIC
PRODCICS	CETR	ENABLED	0	DFHCETRA	255	DFHTCL00	NOTPURGEA...	TRANDUMP	STATIC
PRODCICS	CFTS	ENABLED	0	DFHZATS	255	DFHTCL00	NOTPURGEA...	TRANDUMP	STATIC

IZE0100I Connected user SYSA to host l...m1.boeblingen.de.ibm.com on port 27283 | Inx



IBM CICS Explorer - C:/CICS-Work

File Edit Projekt Operations Definitions - Suchen Window Help

ISC/MRO Con TCP/IP Serv Terminal Programs Transactions TS Queues Transaction Cl Tasks Files TD Queues

CNX0211I Context: PRODCICS. Resource: LOCFILE. 14 records collected at 28.09.2012 18:07:47

Region	Name	Status	Open Status	Add	Browse	Delete	Read	Update	LSR Pool ID	DS Name
PRODCICS	BSTCNTL	✓ ENABLED	CLOSED	ADDABLE	BROWSABLE	DELETABLE	READABLE	UPDATABLE	0	VSE.BSTCN...
PRODCICS	DFHCSD	UNENABLED	CLOSED	ADDABLE	BROWSABLE	DELETABLE	READABLE	UPDATABLE	1	CICS.CSD
PRODCICS	EZACACH	✓ ENABLED	CLOSED	ADDABLE	BROWSABLE	DELETABLE	READABLE	UPDATABLE	1	
PRODCICS	EZACONF	✓ ENABLED	CLOSED	ADDABLE	BROWSABLE	DELETABLE	READABLE	NOTUPDAT...	1	
PRODCICS	IESCNTL	✓ ENABLED	OPEN	ADDABLE	BROWSABLE	DELETABLE	READABLE	UPDATABLE	1	VSE.CONT...
PRODCICS	IESLDUM	✓ ENABLED	CLOSED	ADDABLE	BROWSABLE	DELETABLE	READABLE	UPDATABLE	1	VSE.LDAP...
PRODCICS	IESPRB	✓ ENABLED	OPEN	ADDABLE	NOTBROW...	NOTDELET...	READABLE	UPDATABLE	1	CICS2.ONL...
PRODCICS	IESROUT	✓ ENABLED	OPEN	ADDABLE	BROWSABLE	DELETABLE	READABLE	UPDATABLE	1	VSE.MESSA...
PRODCICS	IESTRFL	✓ ENABLED	OPEN	NOTADDABLE	NOTBROW...	NOTDELET...	READABLE	NOTUPDAT...	1	VSE.TEXT...
PRODCICS	INWFILE	✓ ENABLED	CLOSED	ADDABLE	BROWSABLE	DELETABLE	READABLE	UPDATABLE	1	PC.HOST.T...
PRODCICS	RFSDIR1	✓ ENABLED	CLOSED	ADDABLE	BROWSABLE	DELETABLE	READABLE	UPDATABLE	1	CICREX.FP...
PRODCICS	RFSDIR2	✓ ENABLED	CLOSED	ADDABLE	BROWSABLE	DELETABLE	READABLE	UPDATABLE	1	CICREX.FP...
PRODCICS	RFSPOL1	✓ ENABLED	CLOSED	ADDABLE	BROWSABLE	DELETABLE	READABLE	UPDATABLE	1	CICREX.FP...
PRODCICS	RFSPOL2	✓ ENABLED	CLOSED	ADDABLE	BROWSABLE	DELETABLE	READABLE	UPDATABLE	1	CICREX.FP...

IZE0100I Connected user SYSA to host l...m1.boeblingen.de.ibm.com on port 27283

lnx



## Statement of general direction

- Statement of general direction (SOD) of April announcement:
  - IBM intends in the future to enhance IBM CICS Explorer for IBM CICS Transaction Server for VSE/ESA to provide updates to CICS resources.
  
- IBM CICS Explorer to provide updates to CICS resources
  - Update resources as you would do with transactions on your CICS terminal
  - Enable / disable CICS resources
  - Change selected CICS definitions
  - ....

All statements regarding IBM's plans, directions, and intent are subject to change or withdrawal without notice.





## More Information

... on VSE home page: <http://ibm.com/vse>

- Ingolf's z/VSE blog: <https://www.ibm.com/developerworks/mydeveloperworks/blogs/vse>
- Hints and Tips for z/VSE 5.1:
  - <http://www.ibm.com/systems/z/os/zvse/documentation/#hints>
- 64 bit virtual information:
  - IBM z/VSE Extended Addressability, Version 5 Release 1
  - IBM z/VSE System Macro Reference, Version 5 Release 1
- CICS Explorer: <http://www.ibm.com/software/htp/cics/explorer/>
- IBM Redbooks:
  - Introduction to the New Mainframe: z/VSE Basics  
<http://www.redbooks.ibm.com/abstracts/sg247436.html?Open>
  - Security on IBM z/VSE – updated  
<http://www.redbooks.ibm.com/Redbooks.nsf/RedbookAbstracts/sg247691.html?Open>
  - z/VSE Using DB2 on Linux for System z  
<http://www.redbooks.ibm.com/abstracts/sg247690.html?Open>
- Please contact z/VSE: <https://www-03.ibm.com/systems/z/os/zvse/contact/contact.html>  
or me – Ingolf Salm – [salm@de.ibm.com](mailto:salm@de.ibm.com) – for any questions

