



E55

z/VSE Health Checker

Ingo Franzki, IBM

IBM
SYSTEM z9 AND zSERIES EXPO
October 9 - 13, 2006

Orlando, FL



IBM System z9 and zSeries EXPO

E55 - z/VSE Health Checker



DEMAND BUSINESS™



ON DEMAND BUSINESS™

Trademarks

The following are trademarks of the International Business Machines Corporation in the United States and / or other countries.

CICS*	IBM*	Virtual Image
DB2*	IBM logo*	Facility
DB2 Connect	IMS	VM/ESA*
DB2 Universal	Intelligent	VSE/ESA
Database	Miner	VisualAge*
e-business logo*	Multiprise*	VTAM*
Enterprise Storage	MQSeries*	WebSphere*
Server	OS/390*	xSeries
HiperSockets	S/390*	z/Architecture
	SNAP/SHOT	z/VM
	*	z/VSE
		zSeries

* Registered trademarks of IBM Corporation

The following are trademarks or registered trademarks of other companies.

LINUX is a registered trademark of Linus Torvalds

Tivoli is a trademark of Tivoli Systems Inc.

Java and all Java-related trademarks and logos are trademarks of Sun Microsystems, Inc., in the United States and other countries

UNIX is a registered trademark of The Open Group in the United States and other countries.

Microsoft, Windows and Windows NT are registered trademarks of Microsoft Corporation.

SET and Secure Electronic Transaction are trademarks owned by SET Secure Electronic Transaction LLC.

Intel is a registered trademark of Intel Corporation.

VSE Health Checker

§ Why such a tool?

- VSE has a lot of settings/parameters
- Some settings are dependent on other settings
- Only experienced VSE experts know all these settings and their meanings
- Troubleshooting is often very time consuming
- Asking for all the setting values via phone (L2 service) is very lengthy and painful
- VSE experts are often not on site

The Idea

- § **Diagnosis tool for displaying and analyzing VSE system settings**
- § **Graphical display, diagrams, charts**
- § **Automatic system diagnosis**
- § **Captured data can be**
 - saved to disk (XML format)
 - read from disk
 - sent via e-mail to an VSE expert (e.g. to IBM)
- § **Java based tool running on a PC**
- § **Only base VSE system functions required**
 - Java based Connector to access VSE
 - No additional vendor (priced) products

Benefits

- § **Find out about upcoming problems**
 - Before they occur
- § **Increased stability and performance**
 - when system settings are tuned correctly
- § **Data from different settings can be combined**
- § **Education about VSE settings by using the tool**

- § **Note:**
 - It can take up to 5 minutes to collect all the data
 - Manual collection would take much more time

Procedure

§ 1. Step:

- Collection and user friendly display of the data

§ 2. Step:

- Analysis of the data
- Find and show dependencies

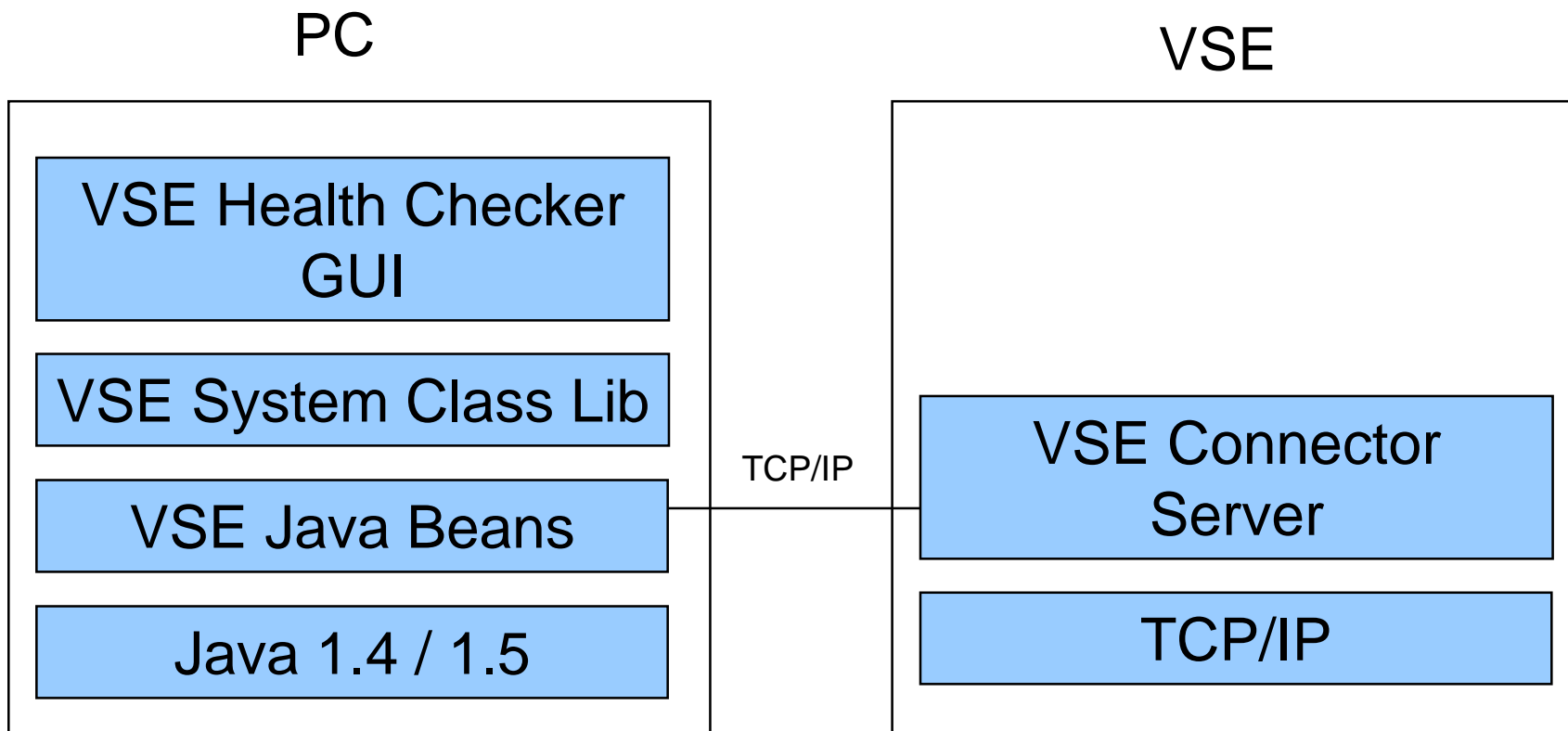
§ 3. Step:

- Modify settings that may cause problems

§ Practical use:

- Preventive use, run about 4 times a year
- Comparison of settings with previous run

Overview



Requirements

- § **VSE/ESA 2.6 (PQ88809 / UQ88864)**
- § **VSE/ESA 2.7 (PQ88809 / UQ88865)**
- § **z/VSE 3.1 GA System or higher**
- § **TCP/IP for VSE**
- § **VSE Connector Server must be running**
- § **VSE Connector Client installed on PC**
- § **Java Version 1.4 or higher on PC**
- § **No other (priced) products on VSE or PC**
- § **STAT transaction defined in order to get CICS TS statistics**
- § **CHKT transaction defined in order to get TS Queues list**

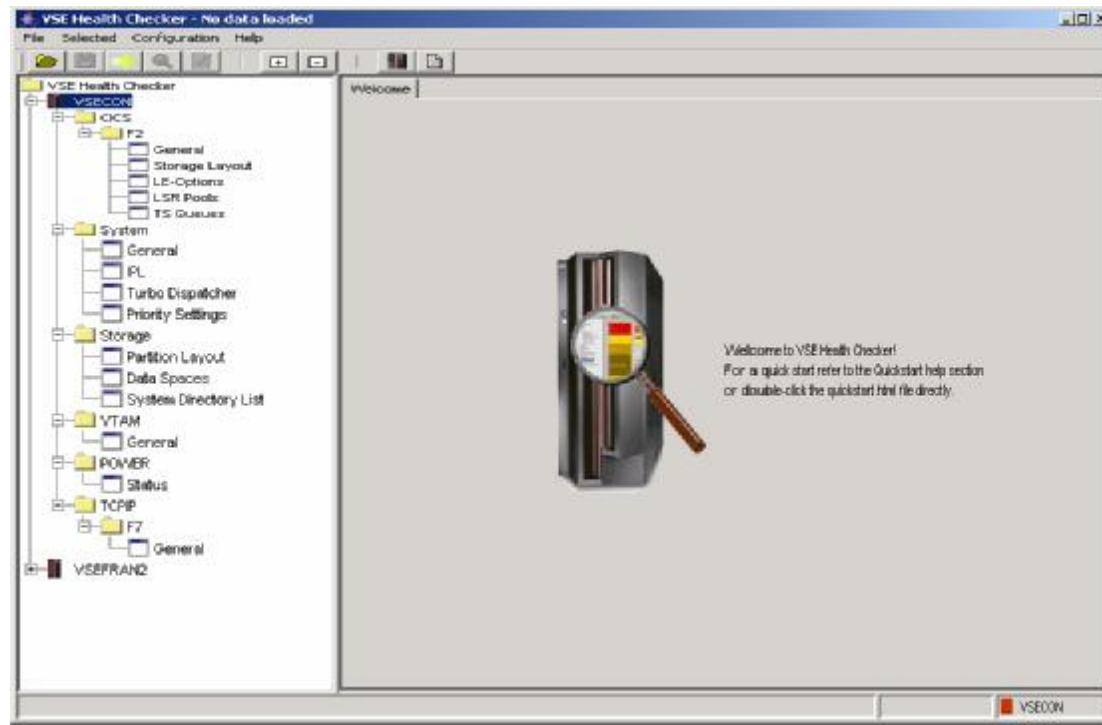
Latest news

- § **List of CICS Transactions (from CICS Statistics)**
- § **LIBLIST display**
- § **VTAM 31 Bit I/O Buffer**
- § **TCP/IP 1.5E**
- § **Security Server Crypto enhancements**
- § **Vendor Product list**
- § **All submitted jobs can be adapted**
 - Jobs are created using skeletons (see skeletons directory)
 - Variables in job skeletons are replaced with values when the job is submitted
 - Example:

```
* $$ JOB JNM=%JOBNAME(1,8,"LSDSL"% ,CLASS=%JOBCLASS(1,1,"0"% ,DISP=%JOBDISP(1,1,"D"% )%
* $$ LST LST=%LST(1,6,"SYSLST"% ,CLASS=%LSTCLASS(1,1,"0"% ,DISP=%LSTDISP(1,1,"H"% )%
// JOB %JOBNAME(1,8,"LSDSL"% )% - VSE HEALTH CHECK
// EXEC LIBR
LD SDL,OUTPUT=%OUTPUT(,"ST"% )%
/*
/&
* $$ EOJ
```

Live Demo – Part 1

- § **Configure a host**
- § **Get the data (takes about 5 min)**



VSE Health Checker - No data loaded

File Selected Configuration Help

VSE Health Checker

- VSECON
 - CICS
 - F2
 - General
 - Storage Layout
 - LE-Options
 - LSR Pools
 - TS Queues
 - System
 - General
 - IPL
 - Turbo Dispatcher
 - Priority Settings
 - Storage
 - Partition Layout
 - Data Spaces
 - System Directory List
 - VTAM
 - General
 - POWER
 - Status
 - TCPIP
 - F7
 - General
- VSEFRAN2

Welcome

Welcome to VSE Health Checker!
 For a quick start refer to the Quickstart help section
 or double-click the quickstart.html file directly.

VSECON

VSE Health Checker - No data loaded

File Selected Configuration Help

Look and feel

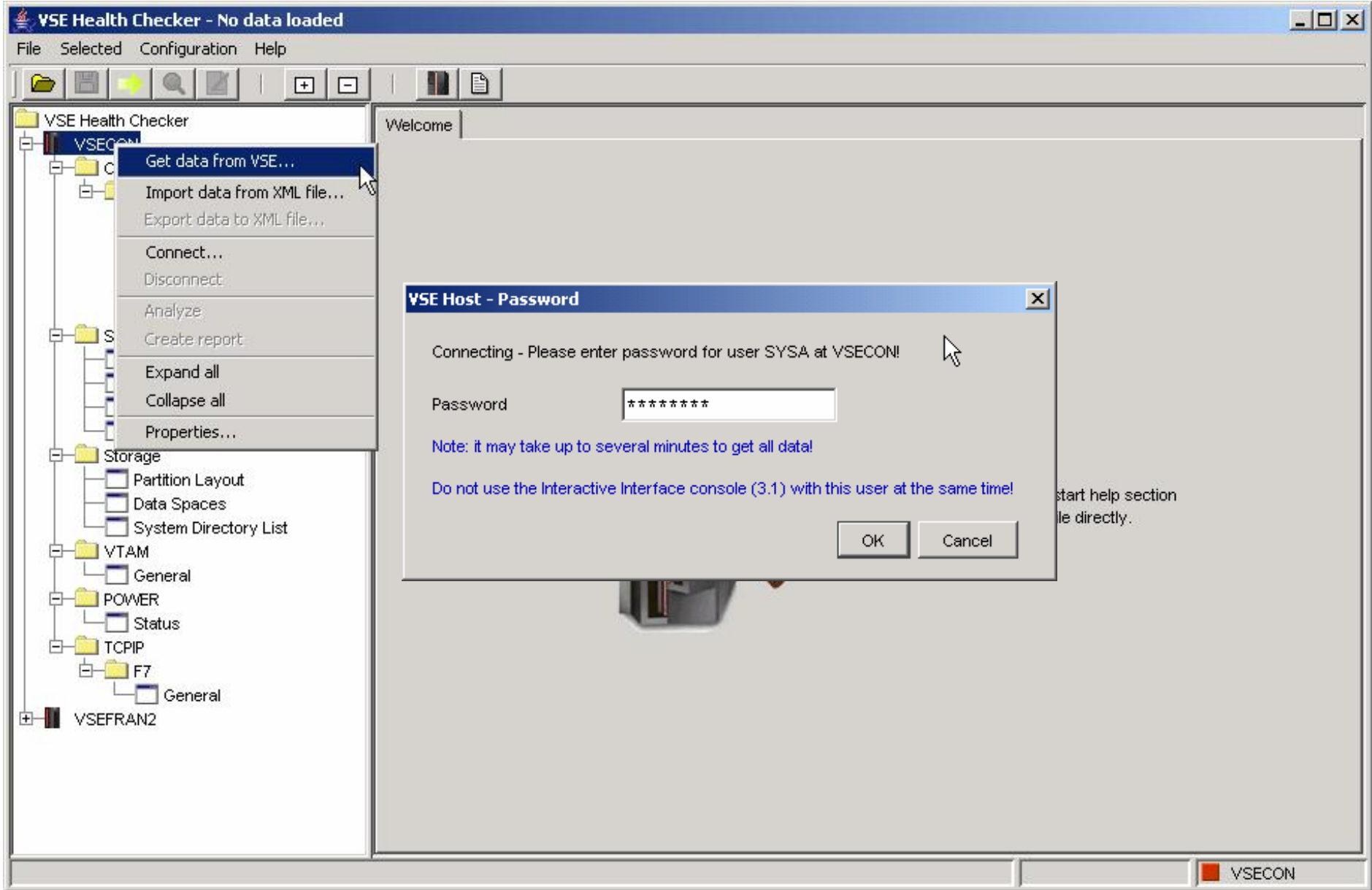
VSE Health | VSE Host Properties | Welcome

VSE Host - Properties

Hostname	VSECON	New
IP Address	vsecon.boeblingen.de.ibm.com	Add
Port	2893	Cancel
VSE User	SYSA	Delete
VSE Job Class	A	Change
CICS TS Partition(s)	F2 like: F2 F5 D1	
TCP/IP Partition(s)	F7	
Power Password (Optional)		
Machine Group	<input type="radio"/> Slow <input checked="" type="radio"/> Medium <input type="radio"/> Fast	
Memo		

Close Help

VSECON



VSE Health Checker vs. native VSE commands

§ Data displayed can be combined from different commands

§ Example: Priority

Priority	Share	Partition	Application
20	0	F1	NN1POWER
19	100	R	TCPIP00 NN1VTAM NN1CICF2
19	100	R1	
19	100	F3	
18	0	F2	STARTVCS
17	0	Z	
16	0	W1	NN1CICF5
16	0	W1	
15	0	X	
14	0	U	
13	0	F4	
12	0	F5	
11	0	F6	

MAP nn

PRTY

D DYNC

VSE Health Checker vs. native VSE commands

- § **Data displayed can be calculated from different values**
- § **Example: POWER storage above**

Partition Storage	
Total	18432 KB
Above	7168 KB

ESA270, Munich

Partition Storage	
Total	5120 KB
Above	0 KB

VSEDEMO, Boeblingen

§ **Formula:**

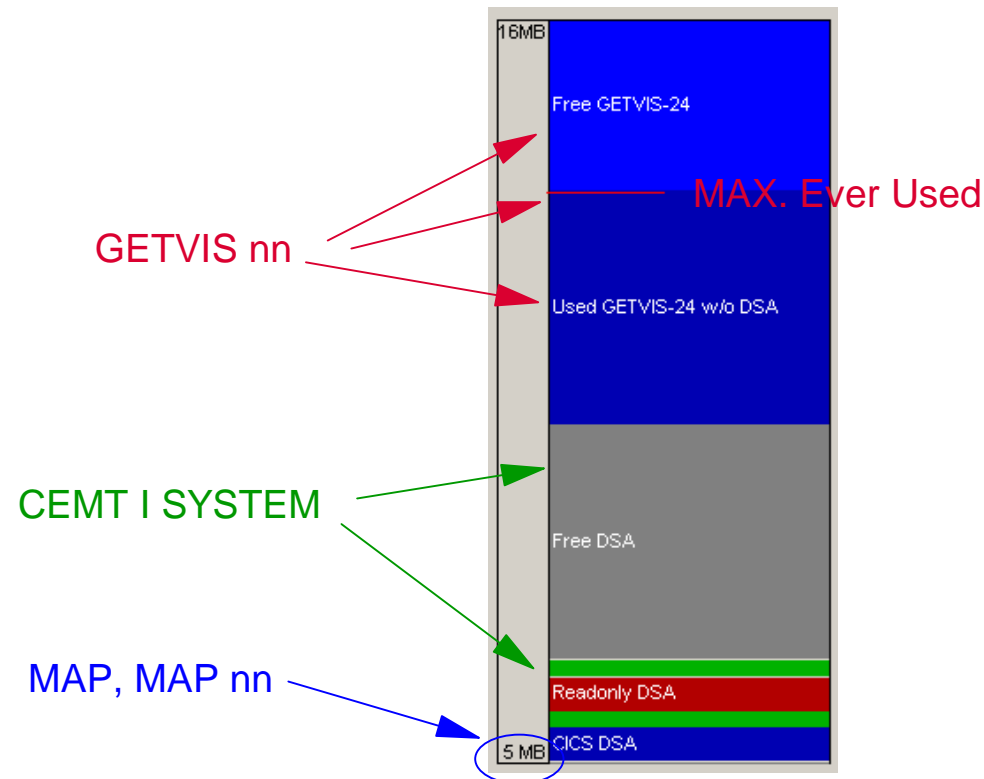
- $\text{part_size} = 16384 - (\text{VADDR} / 100000) * 1024$;
- $\text{stor_above} = \text{ALLOC-VIRTUAL} - \text{part_size}$

§ **Important for POWER Queue File in memory**

VSE Health Checker vs. native VSE commands

§ Data can be displayed as charts or diagrams

§ Example: CICS Storage Layout



VSE Health Checker vs. native VSE commands

§ Hide unimportant data

§ Example: VTAM Buffer Usage

SGA		SGA 24	
Limit	No Limit	Limit	No Limit
Current	736 KB	Current	94 KB
Max	737 KB	Max	94 KB
Max Used	753 KB	Max Used	95 KB

VTAM Private	
Current	4851 KB
Max	4866 KB

VTAM Buffers					
Buffer	Size	Times Exp.	Curr. Total	Max. Total	Max. Used
SF	112	0	32	32	21
IO	359	0	70	70	16
SP	144	0	210	210	0
LP	2032	0	12	12	8
LF	120	0	90	90	2
BS	216	0	34	34	0
XD	681	0	10	10	0
CR	164	1	60	82	32

```

d net,bfruse
AR 0015 1C39I COMMAND PASSED TO ACF/VTAM
F3 0003 IST097I DISPLAY ACCEPTED
F3 0003 IST350I DISPLAY TYPE = BUFFER POOL DATA
F3 0003 IST920I SF          BUFF SIZE 112          EXP INCREMENT 32
F3 0003 IST921I          TIMES EXP 0              EXP/CONT THRESH 1 / *NA*
F3 0003 IST922I          CURR TOTAL 32            CURR AVAILABLE 30
F3 0003 IST923I          MAX TOTAL 32            MAX USED 2
F3 0003 IST924I -----
F3 0003 IST920I IO          BUFF SIZE 359          EXP INCREMENT 20
F3 0003 IST921I          TIMES EXP 0              EXP/CONT THRESH 6 / *NA*
F3 0003 IST922I          CURR TOTAL 70            CURR AVAILABLE 70
F3 0003 IST923I          MAX TOTAL 70            MAX USED 13
F3 0003 IST989I          EXP LIMIT 2147483647    BUFFS REQUESTED 0
F3 0003 IST924I -----
F3 0003 IST920I SP          BUFF SIZE 144          EXP INCREMENT 51
...
...
...
F3 0003 IST449I SGALIMIT = NO LIMIT, CURRENT = 625K, MAXIMUM = 625K
F3 0003 IST790I MAXIMUM SGA USED = 625K
F3 0003 IST449I SGA24 LIMIT = NO LIMIT, CURRENT = 77K, MAXIMUM = 78K
F3 0003 IST790I MAXIMUM SGA24 USED = 78K
F3 0003 IST595I IRNLIMIT = NO LIMIT, CURRENT = 0K, MAXIMUM = 0K
F3 0003 IST981I VTAM PRIVATE: CURRENT = 3583K, MAXIMUM USED = 3583K
F3 0003 IST924I -----
    
```

VSE Health Checker vs. native VSE commands

§ Support of “undocumented” or “unknown” settings

§ Example: TCP/IP:

- SET CLOSE_DEPTH = { nn | 10 }
Important when sending big files via FTP.
See Q SET command: “Close Connection Depth”.
- SET CONNECT_QUEUE = { ON | OFF }
Solves “listen backlog” problem. When turned ON, up to 10 simultaneous connections can be accepted.
See Q SET command: “Connection queuing”.

Analysis

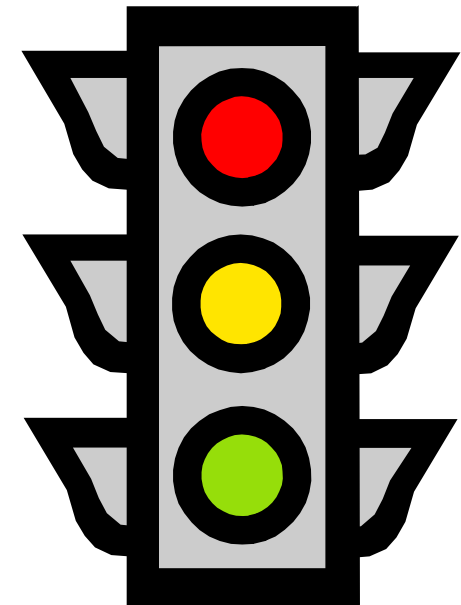
§ Analysis is based on a knowledgebase

- Stored in an XML file
- Contains rules (traffic-light analogy)
 - Green (OK):
 - E.g. `$TIMES_AT_MXT == 0`
 - Yellow (Warning):
 - E.g. `$TIMES_AT_MXT > 0 && $TIMES_AT_MXT < 9`
 - Red (Severe):
 - E.g. `$TIMES_AT_MXT > 8`
 - Description:
 - E.g. With CICS TS this value must not be equal to zero, but it should not be higher than 8.

§ Results are displayed in the GUI

- By marking the values with the appropriate color

§ Detailed report can be generated (HTML)



Live Demo – Part 2

§ Data has been received

§ Analyze the data

- There are some values to check (red or yellow)
 - DEBUG=ON
 - CICS LE Runtime Options:
 - DEBUG=ON
 - ALL31=ON
 - TCP/IP:
 - CLOSE_DEPTH = 10
 - CONNECT_QUEUE = OFF

§ Generate report

§ Fix the problems

§ Get the data again (takes about 5 minutes)

VSE Health Checker - Data loaded from: VSECON(vsecon.boeblingen.de.ibm.com)

File Selected Configuration Help

Storage Below | Storage Above | CDSA / SDSA | RDSA / UDSA | ECDSA / ESDSA | ERDSA / EUDSA

16MB

Area	Size (KB)	Size (MB)
Free GETVIS-24	2376	2.32
Used GETVIS-24...	3768	3.67
Free DSA	3840	3.75
User DSA (UDSA)	256	0.25
Readonly DSA (...)	256	0.25
Shared DSA (SD...)	256	0.25
CICS DSA (CDSA)	512	0.50
Partition Program...	4	0.00

5 MB

CICS DSA

- Public Key (90)
- Partition Key (B0)
- Readonly Key (00)

Job Name	CICSICCF	Peak DSA Size	1280 KB
Phase Name	DFHSIP	Peak DSA Used	784 KB
Part. Begin Addr.	500000	DSA Limit	5120 KB
Storage Prot.	Active	Max. Ever Used GETVIS-24	11260 KB —

Note: issue a GETVIS nn,RESET after CICS startup to get a correct max_ever_used_24 value.

VSECON

VSE Health Checker - Data loaded from: VSECON_2006_08_29_16.38.44.xml - Timestamp: Aug 29, 2006 4:32:50 PM

File Selected Configuration Help

VSE Health Checker

- VSECON
 - CICS
 - F2
 - General
 - Storage Layout
 - LE-Options
 - LSR Pools
 - TS Queues
 - System
 - General**
 - IPL
 - Turbo Dispatcher
 - Priority Settings
 - Storage
 - Partition Layout
 - Data Spaces
 - System Directory List
 - VTAM
 - General
 - POWER
 - Status
 - TCPIP
 - F7
 - General
- VSEFRAN2

General | High Water Marks | CPU Addrs | Standard Options | Security Server (BSM) | Vendor Software

System

System	z/VSE 3.1.0 DR_8 11/18/2004
AF Level	7.1.0 DY46577 05/05/2006
POWER	7.1.0 DY46528 01/30/2006
Turbo Disp.	ACTIVE
Int. TD Level	45: z/VSE 3.1
JCL Proc.	\$\$JCL

CPU

CPU ID VM	00016F6A20848000
VM System	z/VM 4.4.0 (0302) U
CPU ID VSE	FF08200020848000
Processor	IBM 2084-332 02 (16F6A02) LPAR = CT1 No. = 000
	IBM eServer zSeries 990

Security

Security Mgr.	BASIC
Security	ONLINE

Page In

Total	876
Pages/sec.	28

Other

Debug	OFF
MSECS	976

Page Out

Total	1478
Pages/sec.	2

Hardware

VSECON

VSE Health Checker - Data loaded from: VSECON(vsecon.boeblingen.de.ibm.com)

File Selected Configuration Help

Runtime Options for CICS Runtime Options for Batch

General

Enclave EDCYCROP

Environment VSE/ESA V1 R4.4

Options

AbTermEnc	ABEND	CLER CICS Override
All31	ON	Installation default
Debug		CLER CICS Override
Heap	4096,4080,ANYWHERE,KEEP,4096,4080	Installation default
Stack	4096,4080,ANYWHERE,KEEP	Installation default
Storage	00,NONE,NONE,0	Installation default
Test	ALL,"*", "PROMPT", ""	Installation default
Trace	OFF,4096,DUMP,LE=0	Installation default
TermThdAct	TRACE,MSGFL,0	Installation default
Trap	ON,MAX	Installation default

VSECON

VSE Health Checker - Data loaded from: VSECON_2006_08_29_16.38.44.xml - Timestamp: Aug 29, 2006 4:32:50 PM

File Selected Configuration Help

VSE Health Checker

- VSECON
 - CICS
 - F2
 - General
 - Storage Layout
 - LE-Options
 - LSR Pools
 - TS Queues
 - System
 - General
 - IPL
 - Turbo Dispatcher
 - Priority Settings
 - Storage
 - Partition Layout
 - Data Spaces
 - System Directory List
 - VTAM
 - General
 - POWER
 - Status
 - TCPIP
 - F7
 - General
- VSEFRAN2

General | DNS | Discover best MTU | Fixes Applied | LIBLIST

General Service Pack 01.05 D IBM APAR PQ79563 IP Address 9.152.80.24 Subnet Mask 255.255.248.0 Max. Segment 32684 System ID 00		Performance Window Size 35535 Fixed Retransmission OFF Dynamic Routing ON Debug OFF Memory Verification OFF Record OFF Gateway ON Checksum Calculation Software Pulse Time 18000 Uppercase (DBCS) OFF		Events Event Pause Interval 9000 (30 Seconds) Max. Events - Current Events - Max. LPR Events 5 Current LPR Events 0 Max. FTP Events 1 Current FTP Events 0 Max. Email Events 1 Current Email Events 0	
Connection Handling Close Connection Depth 10 Connection Queuing ON Connect Sequence OFF		Security Security Processing ON ARP Checking OFF IP Address Checking OFF ----- 1.5E only: ----- Exit Data Automatic Security Security Exit Batch Security			

VSECON

VSE Health Checker - Generated Report - Microsoft Internet Explorer

File Edit View Favorites Tools Help

← Back → Search Favorites Media

Address D:\Performance\Presentations\Wavv 2005\VSECON_report.html Links >>

Report for Host VSECON

Generated at: Fr, 29 Apr 2005 16:10:01

DEBUG

Debug should always be OFF in a production system.

How to display this parameter on VSE

```
debug
AR 0015 DEBUG OFF
AR 0015 TRACE=PCK,TEST,REGS,TASK,INT,SIO,EXT,DISP,SVC,TERM,SWCH,DATA,USER

AR 0015 TRACE=TDTR
```

How to change this parameter

DEBUG (ON | OFF)

More information

[IBM Online Bookshelf](#)

Calculation: (\$DEBUG == true);

Partition: -

Analysis Result: **Severe**

Done My Computer

```

Session A - [32 x 80]
File Edit View Communication Actions Window Help
CLER 04/29/05
14:16:06

Language Environment for VSE/ESA V1 R4.4
Dynamic CICS Runtime Option Modification Facility

ABPERC: ( NONE ) STORAGE: ( 00 , NONE , NONE , 0 )
ABTERMENC: ( ABEND ) TERMTHD: ( TRACE , MSGFL , 0 )
ALL31: ( ON ) TRAP: ( ON , MAX )
CBLPSHPOP: ( ON ) USRHDLR: ( )
CHECK: ( OFF ) TERMTHDACT LSTQ OPTIONS :
DEBUG: ( ON ) CLASS: ( L ) DISPOSITION: ( D )
DEPTHCOND: ( 10 ) NODE-ID: ( )
ERRCOUNT: ( 20 ) USER-ID: ( )
HEAP: ( 4096 , 4080 , ANYWHERE , KEEP , 4096 , 4080 )
LIBSTACK: ( 4096 , 4080 , FREE )
MSGFILE: ( CESE )
RPTOPTS: ( OFF )
RPTSTG: ( OFF )
STACK: ( 4096 , 4080 , ANYWHERE , KEEP )

Please change the runtime option to the setting required.

<PF3> Exit <PF4> Restore Defaults <PF5> Update <PF12> Exit(No Change)

MA a 11/016
Connected to remote server/host boevmct1 using port 23 Print to Disk - Append

```

```
Session A - [32 x 80]
File Edit View Communication Actions Window Help
SYSTEM: z/VSE z/VSE 3.1 TURBO (01) USER: FRAN
VM USER ID: VSECON TIME: 14:18:15
F7-0100 IPN000I Enter TCP/IP Command
100 set close_depth=20
F7 0097 IPN020I Close Connection Depth is set to 20
F7-0100 IPN300I Enter TCP/IP Command
100 set connect_queue=on
F7 0097 IPN009I Connection queuing set to on
F7-0100 IPN300I Enter TCP/IP Command
debug off
AR 0015 1140I READY
debug
AR 0015 DEBUG OFF
AR 0015 TRACE=PCK,TEST,REGS,TASK,INT,SIO,EXT,DISP,SVC,TERM,SWCH,DATA,USER

AR 0015 TRACE=TDTR

==> _
1=HLP 2=CPY 3=END 4=RTN 5=DEL 6=DELS 7=RED 8=CONT 9=EXPL 10=HLD 12=RTRV
ACT_MSG: HOLDRUN PAUSE: 01 SCROLL: 1 MODE: CONSOLE
MÁ a 28/006
Connected to remote server/host boevmct1 using port 23 Print to Disk - Append
```

VSE Health Checker - Data loaded from: VSECON(vsecon.boeblingen.de.ibm.com)

File Selected Configuration Help

VSE Health Checker

VSECON

- Get data from VSE...
- Import data from XML file...
- Export data to XML file...
- Connect...
- Disconnect
- Analyze
- Create report
- Expand all
- Collapse all
- Properties...

Storage

- Partition Layout
- Data Spaces
- System Directory List

VTAM

- General

POWER

- Status

TCPIP

- F7
- General

VSEFRAN2

Welcome

Welcome to VSE Health Checker!
For a quick start refer to the Quickstart help section or double-click the quickstart.html file directly.

VSECON

Analysis - extended

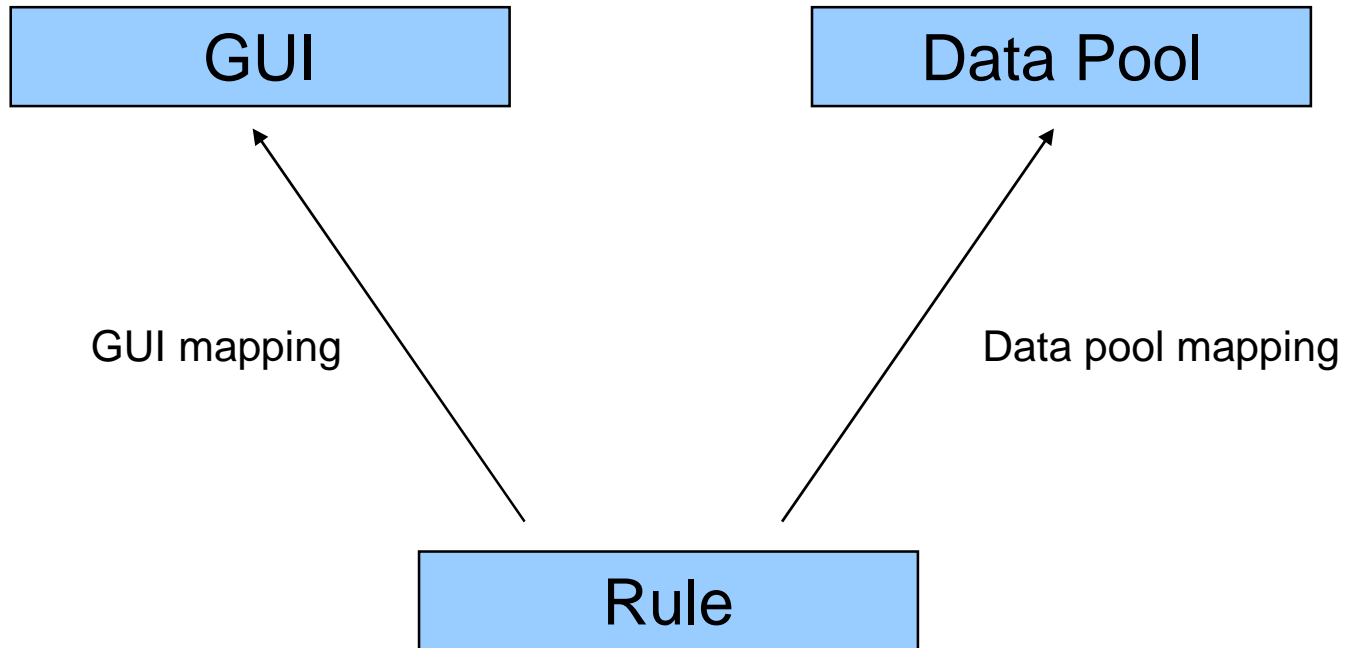
§ Rules can be valid for

- All partitions
- All dynamic partitions
- All static partitions
- Specific partitions
 - E.g. special applications
- Special applications
 - CICS
 - VTAM
 - TCP/IP

§ Some values may be dependent on the speed of the processor

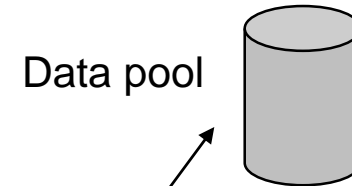
- Machine group limits
 - slow, medium, fast
- e.g. PRTY aging

Mappings



Example – Times at MXT

Transactions	
Total Transactions	1224
Max. Tasks	20
Times at MXT	0
Peak Active User transactions	4



```
<TIMES_AT_MXT>
  [CICS:General;Times at MXT]
</TIMES_AT_MXT>
```

```
<TIMES_AT_MXT>
  [StatDataCollection;TimesAtMxt]
</TIMES_AT_MXT>
```

```
<TIMES_AT_MXT>
<rule>
  <green> ($TIMES_AT_MXT == 0); </green>
  <yellow> ($TIMES_AT_MXT > 0) && ($TIMES_AT_MXT < 9); </yellow>
  <red> ($TIMES_AT_MXT > 8); </red>
</rule>
</TIMES_AT_MXT>
```


Known problems

§ **Dependencies to OEM products, e.g. console managers, like MLOG**

§ **Parsing errors caused by**

- Different console output
 - e.g. TCP/IP 1.5E updates
- Different contents of IPLPROC
- Adapting the JCL of submitted jobs may help

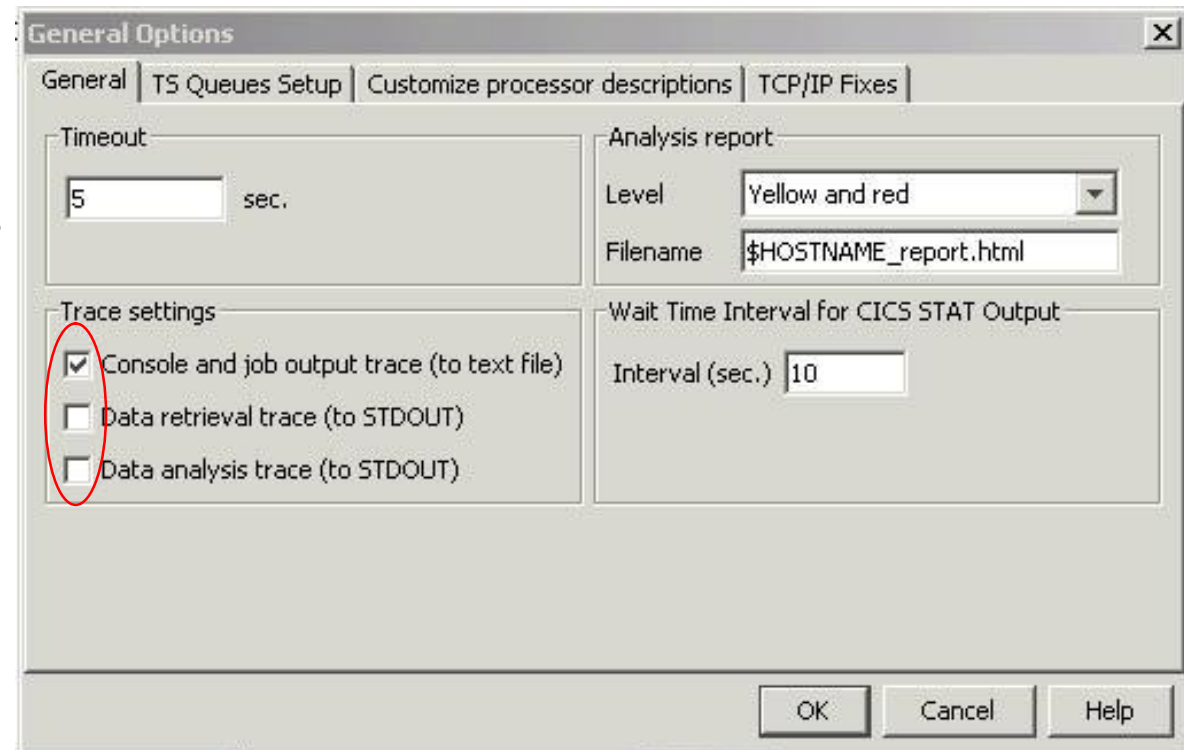
§ **If you encounter a problem**

- Contact zvse@de.ibm.com
- Send debug info (see next foil)

Debugging

§ Write console and job output to local text file

§ Internal debug trace (data retrieval and analysis)



Live Demo – Part 3

§ **Data has been received (second time)**

§ **Analyze the data once more**

– The problems no longer exists

§ **Save the data**

– For archiving it

– For sending it to IBM support people

VSE Health Checker - Data loaded from: VSECON-no-problems.xml - Timestamp: 29.04.2005 16:29:35

File Selected Configuration Help

Runtime Options for CICS | Runtime Options for Batch

General

Enclave EDCYCROP

Environment VSE/ESA V1 R4.4

Options

AbTermEnc	ABEND	CLER CICS Override
All31	ON	Installation default
NO Debug		CLER CICS Override
Heap	4096,4080,ANYWHERE,KEEP,4096,4080	Installation default
Stack	4096,4080,ANYWHERE,KEEP	Installation default
Storage	00,NONE,NONE,0	Installation default
NO Test	ALL,"*", "PROMPT", ""	Installation default
Trace	OFF,4096,DUMP,LE=0	Installation default
TermThdAct	TRACE,MSGFL,0	Installation default
Trap	ON,MAX	Installation default

VSECON

VSE Health Checker - Data loaded from: VSECON-no-problems.xml - Timestamp: 29.04.2005 16:29:35

File Selected Configuration Help

VSE Health Checker

- VSECON
 - CICS
 - F2
 - General
 - Storage Layout
 - LE-Options
 - LSR Pools
 - TS Queues
 - System
 - General**
 - IPL
 - Turbo Dispatcher
 - Priority Settings
 - Storage
 - Partition Layout
 - Data Spaces
 - System Directory List
 - VTAM
 - General
 - POWER
 - Status
 - TCPIP
 - F7
 - General
- VSEFRAN2

General		High Water Marks	CPU Addr	Standard Options
System				
System	z/VSE 3.1.0 DR_8 11/18/2004		CPU	CPU ID VM 0011981420640000
AF Level	7.1.0 DY46233 04/06/2005		VM System	VMESA (LPAR) 4.4.0
POWER	7.1.0 7.1 DR8 09/30/2004		CPU ID VSE	FF08200020640000
Turbo Disp.	ACTIVE		Processor	IBM 2064-109 02 / ESA (64-BIT)
Int. TD Level	45: z/VSE 3.1		IBM eServer zSeries 900	
JCL Proc.	\$\$JCL			
Security				
Security Mgr.	BASIC		Other	Debug OFF
Security	ONLINE		MSECS	976
Page In				
Total	409		Page Out	
Pages/sec.	7		Total	884
			Pages/sec.	2

VSECON



VSE Health Checker - Data loaded from: VSECON-no-problems.xml - Timestamp: 29.04.2005 16:29:35

File Selected Configuration Help

VSE Health Checker

- VSECON
 - CICS
 - F2
 - General
 - Storage Layout
 - LE-Options
 - LSR Pools
 - TS Queues
 - System
 - General
 - IPL
 - Turbo Dispatcher
 - Priority Settings
 - Storage
 - Partition Layout
 - Data Spaces
 - System Directory List
 - VTAM
 - General
 - POWER
 - Status
 - TCPIP
 - F7
 - General
 - VSEFRAN2

General DNS Discover best MTU Fixes Applied

General		Performance		Events	
Service Pack	01.05 D	Window Size	65535	Event Pause Interval	9000 (30 Seconds)
IBM APAR	PQ79563	FTP Max. Buffers	0	Max. Events	-
IP Address	9.152.80.24	Fixed Retransmission	OFF	Current Events	-
Subnet Mask	255.255.248.0	Dynamic Routing	ON	Max. LPR Events	5
Max. Segment	32684	Debug	OFF	Current LPR Events	0
System ID	00	Memory Verification	OFF	Max. FTP Events	1
Security		Record	OFF	Current FTP Events	0
Security	ON	Gateway	ON	Max. Email Events	1
ARP Security	OFF	Checksum Calculation	Software	Current Email Events	0
IP Security	OFF	Pulse Time	18000		
Connection Handling		Uppercase (DBCS)	OFF		
Close Connection Depth	20				
Connection Queuing	ON				
Connect Sequence	OFF				

VSECON

VSE Health Checker - Data loaded from: VSECON-no-problems.xml - Timestamp: 29.04.2005 16:29:35

File Selected Configuration Help

Import data from XML file...
Export data to XML file...
 Exit

+ - | [Icons]

General DNS Discover best MTU Fixes Applied

General		Performance		Events	
Service Pack	01.05 D	Window Size	65535	Event Pause Interval	9000 (30 Seconds)
IBM APAR	PQ79563	FTP Max. Buffers	0	Max. Events	-
				Event LPR Events	5
				Event LPR Events	0
				Event FTP Events	1
				Event FTP Events	0
				Event Email Events	1
				Event Email Events	0

Save data to XML file ...

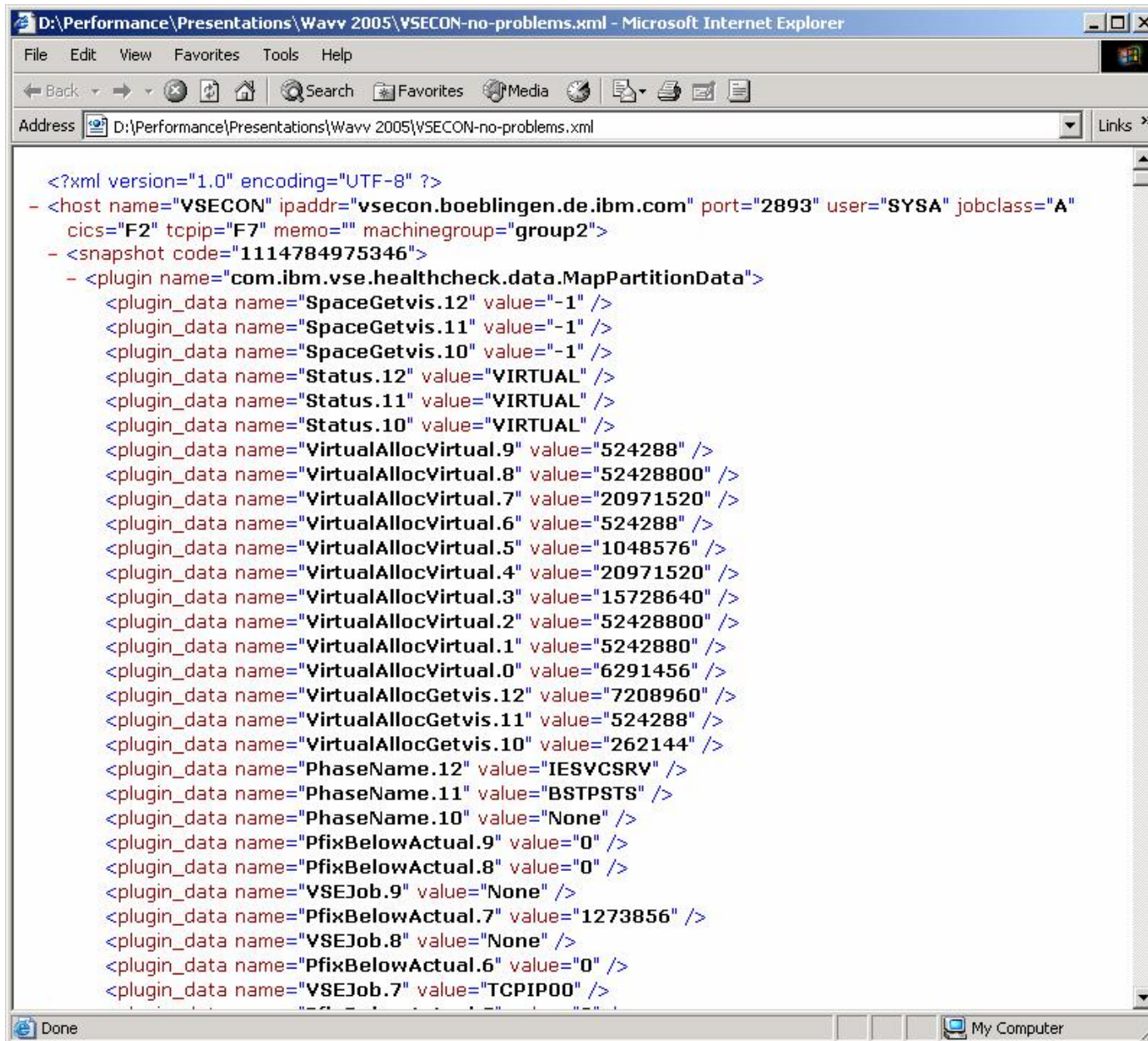
Save in: System (C:)

CallCenter	NVIDIA	Seti
DataArmour	odbcsdk	swd
Documents and Settings	Program Files	Temp
Lotus	PSM	WINNT
MSOffice	RKA	zeta
Notes	Sdwork	NTNetDBPart.TLB

File name: VSECON_2005_04_29_16.32.53.xml Save Cancel

Save as type: Alle Dateien (*.*)

VSEFRAN2 VSECON



```

<?xml version="1.0" encoding="UTF-8" ?>
- <host name="VSECON" ipaddr="vsecon.boeblingen.de.ibm.com" port="2893" user="SYSA" jobclass="A"
  cics="F2" tcpip="F7" memo="" machinegroup="group2">
- <snapshot code="1114784975346">
  - <plugin name="com.ibm.vse.healthcheck.data.MapPartitionData">
    <plugin_data name="SpaceGetvis.12" value="-1" />
    <plugin_data name="SpaceGetvis.11" value="-1" />
    <plugin_data name="SpaceGetvis.10" value="-1" />
    <plugin_data name="Status.12" value="VIRTUAL" />
    <plugin_data name="Status.11" value="VIRTUAL" />
    <plugin_data name="Status.10" value="VIRTUAL" />
    <plugin_data name="VirtualAllocVirtual.9" value="524288" />
    <plugin_data name="VirtualAllocVirtual.8" value="52428800" />
    <plugin_data name="VirtualAllocVirtual.7" value="20971520" />
    <plugin_data name="VirtualAllocVirtual.6" value="524288" />
    <plugin_data name="VirtualAllocVirtual.5" value="1048576" />
    <plugin_data name="VirtualAllocVirtual.4" value="20971520" />
    <plugin_data name="VirtualAllocVirtual.3" value="15728640" />
    <plugin_data name="VirtualAllocVirtual.2" value="52428800" />
    <plugin_data name="VirtualAllocVirtual.1" value="5242880" />
    <plugin_data name="VirtualAllocVirtual.0" value="6291456" />
    <plugin_data name="VirtualAllocGetvis.12" value="7208960" />
    <plugin_data name="VirtualAllocGetvis.11" value="524288" />
    <plugin_data name="VirtualAllocGetvis.10" value="262144" />
    <plugin_data name="PhaseName.12" value="IESVCSRV" />
    <plugin_data name="PhaseName.11" value="BSTPSTS" />
    <plugin_data name="PhaseName.10" value="None" />
    <plugin_data name="PfixBelowActual.9" value="0" />
    <plugin_data name="PfixBelowActual.8" value="0" />
    <plugin_data name="VSEJob.9" value="None" />
    <plugin_data name="PfixBelowActual.7" value="1273856" />
    <plugin_data name="VSEJob.8" value="None" />
    <plugin_data name="PfixBelowActual.6" value="0" />
    <plugin_data name="VSEJob.7" value="TCPIP00" />
  
```


Download and documentation

§ VSE Health Checker

- <http://www.ibm.com/servers/eserver/zseries/zvse/downloads/#healthchecker>

§ VSE Connector Client

- <http://www.ibm.com/servers/eserver/zseries/zvse/downloads/#vsecon>

§ z/VSE V3.1 Administration, SC33-8224

§ z/VSE V3.1 Operation, SC33-8239

§ z/VSE V3.1 System Control Statements, SC33-8225

Questions ?

