



40 Jahre VSE



## 40 Jahre rund um z/VSE

Karl Klink, Dipl. Ing., 71155 Altdorf

[karl\\_klink@freenet.de](mailto:karl_klink@freenet.de)

**ON** DEMAND BUSINESS™

© 2005 IBM Corporation



# 40 Jahre rund um VSE





# Evolution Hardware



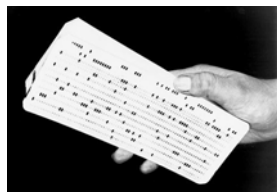
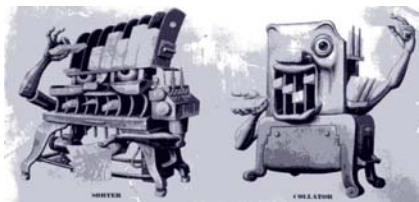
IBM System z9



IBM S/360

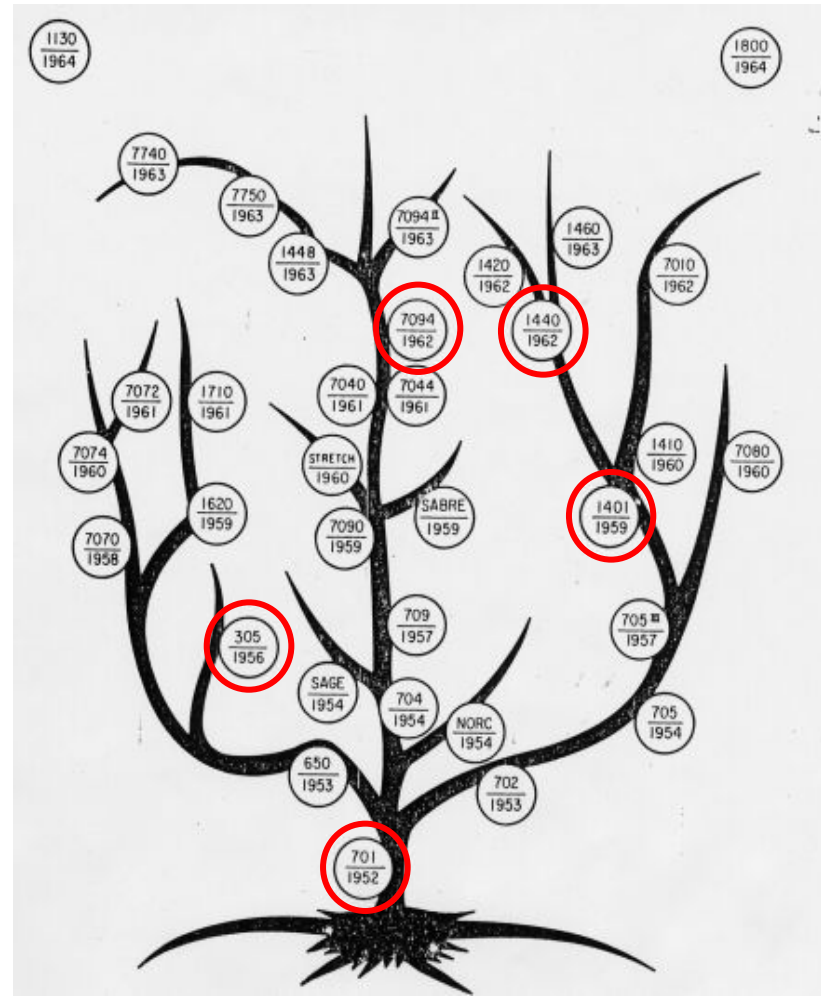


IBM 701



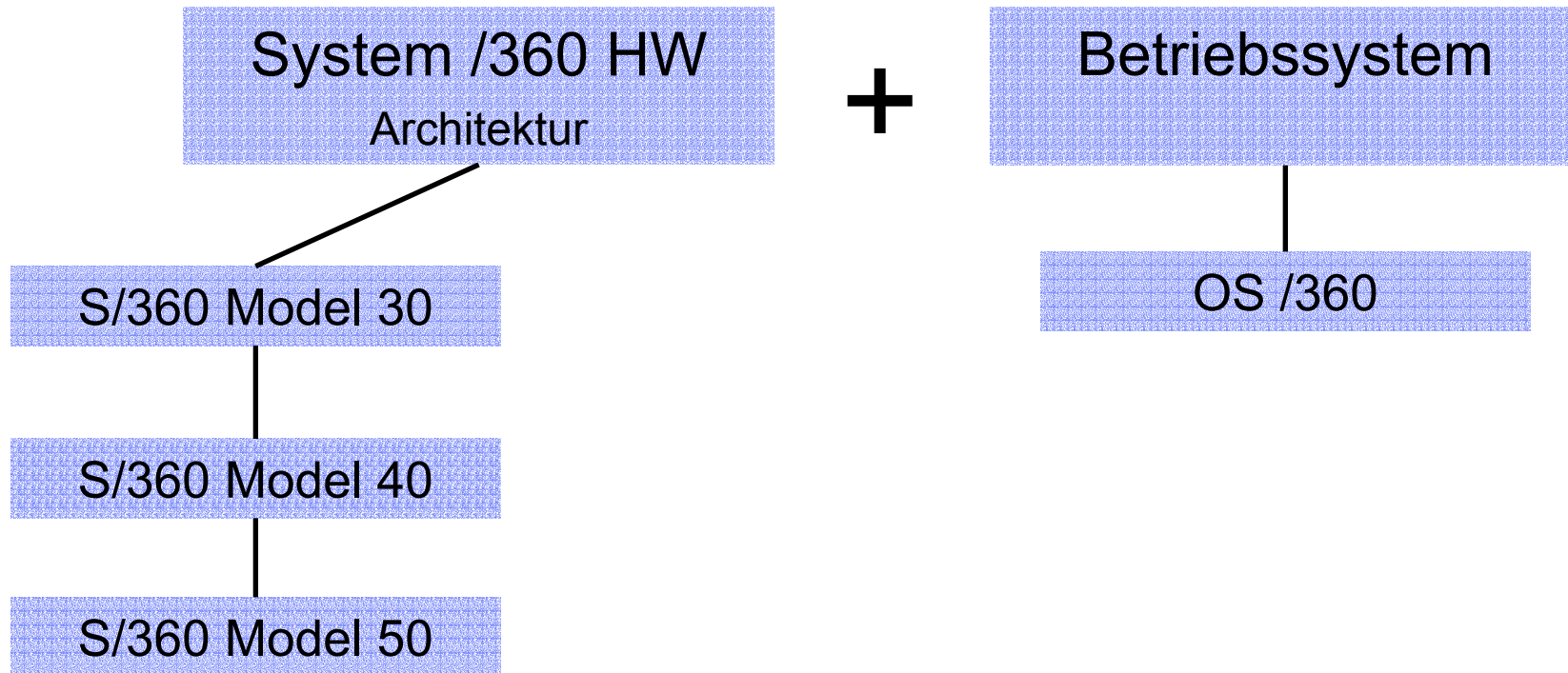


# IBM's elektronische Rechenmaschinen um 1960





# System /360 & OS /360



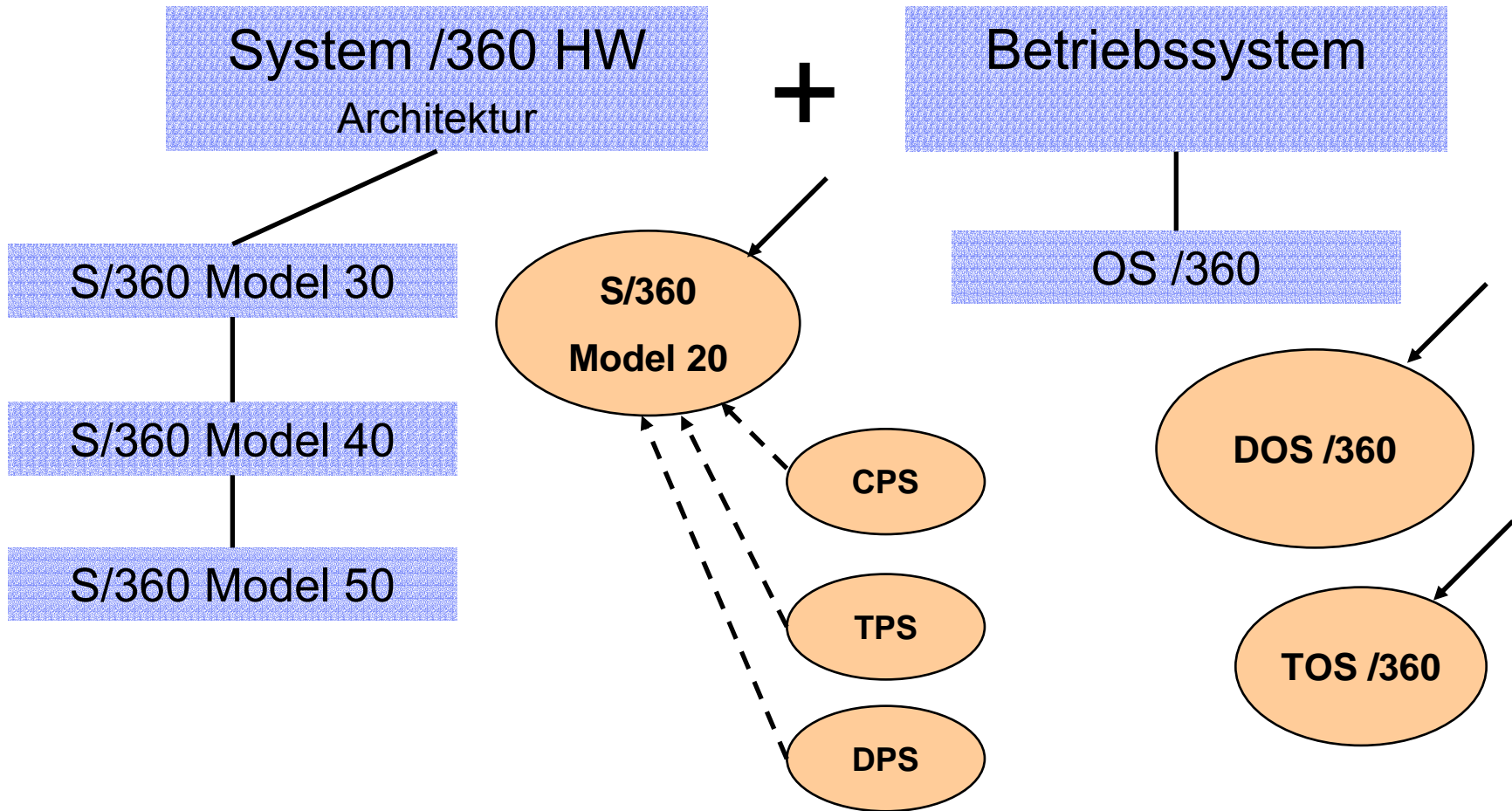


# Der erste DOS/360 Programmierer



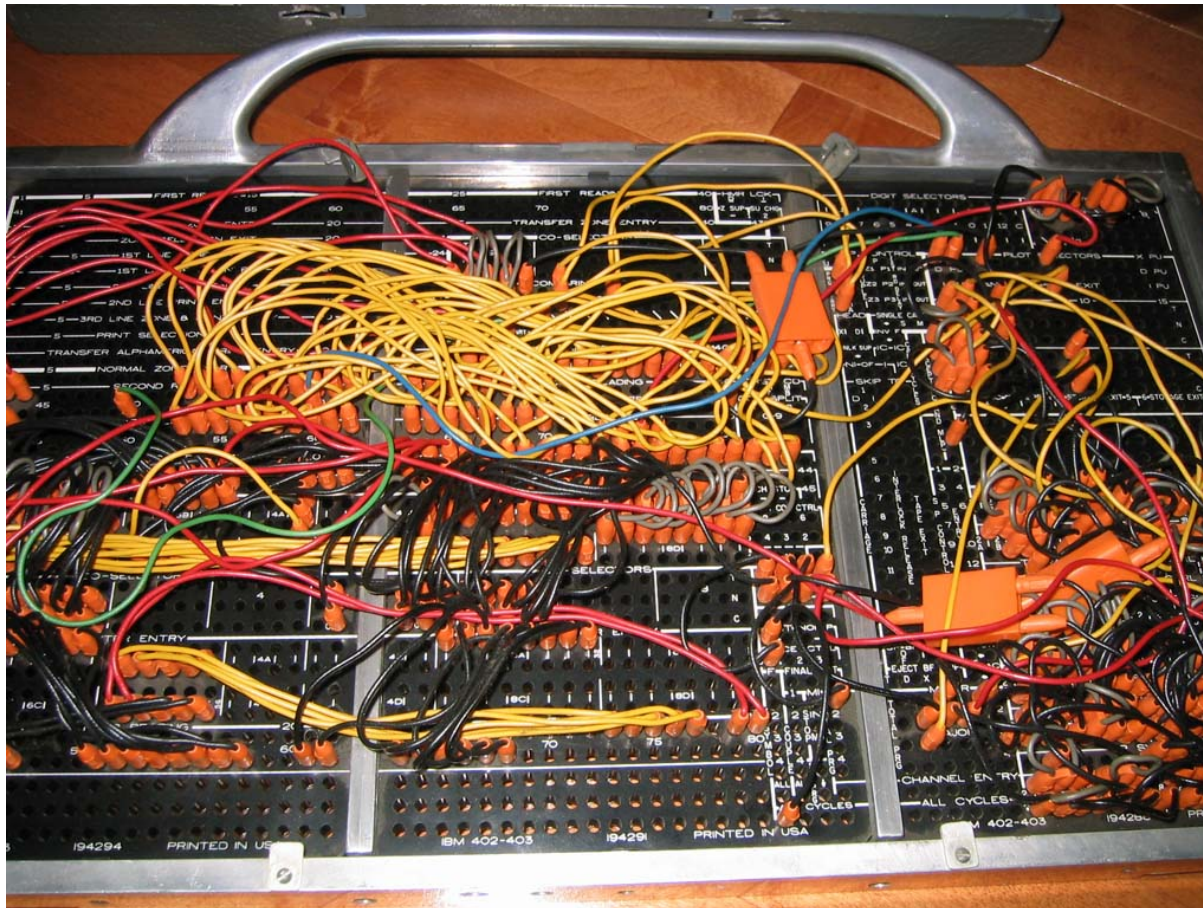


# System /360 & OS /360





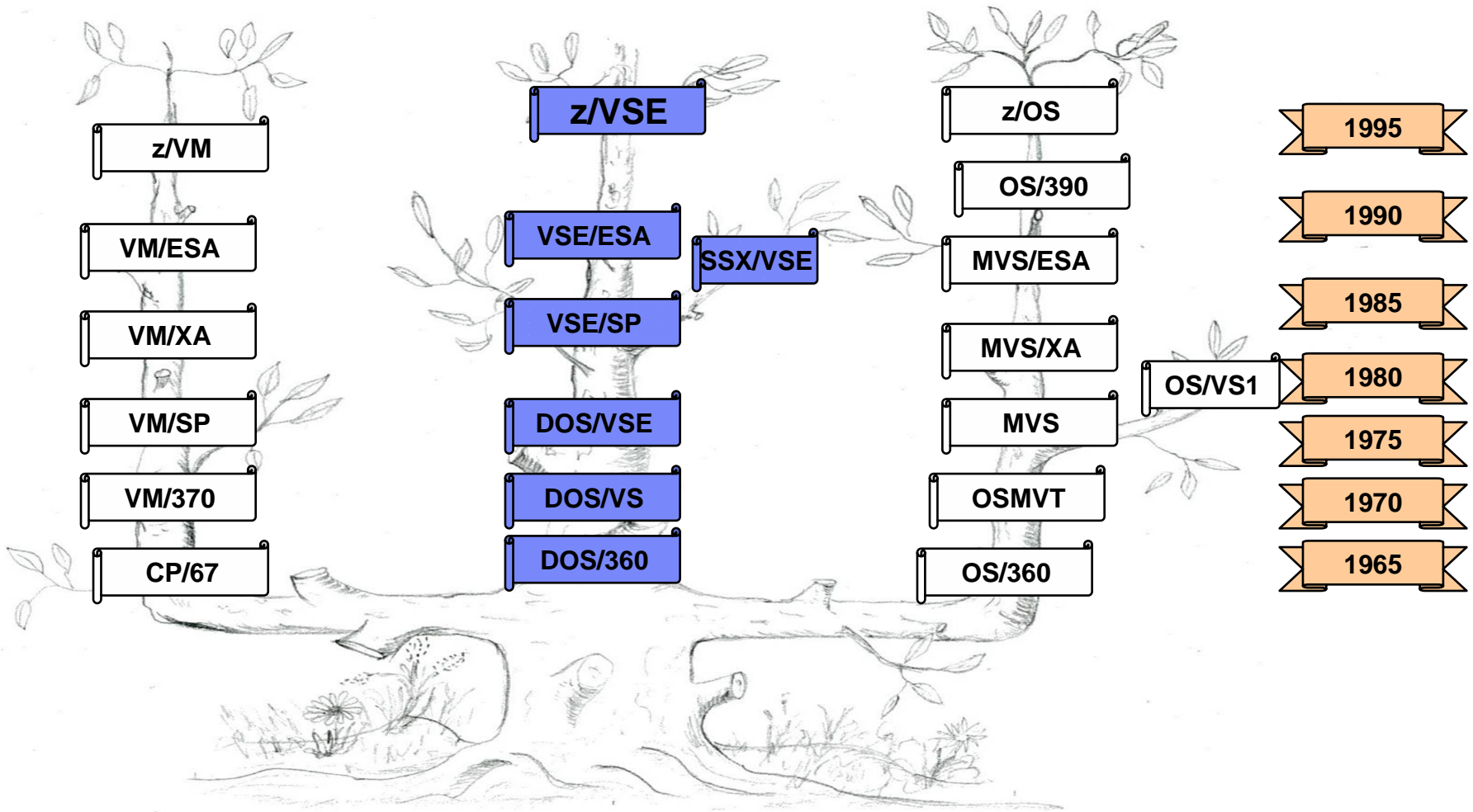
# Ahnengalerie von VSE







# Stammbaum





# DOS/360 – Release 1



- **Hauptspeicher ab 16 kb**
- **Programmbibliotheken auf Platte**
- **1 Batch partition**
- **Speicher “Overlays”**
  - ▶ Roll-in / roll – Out
- **Compiler**
  - ▶ Assembler
  - ▶ RPG
  - ▶ Cobol, Fortran, PL/1
- **IOCS (input/output Control System)**
  - ▶ 3 Zugriffsmethoden
    - SEQUENTIAL (DTFSD)
    - DIRECT (DAM)
    - INDEX-SEQUENTIAL (ISAM)

6 KB

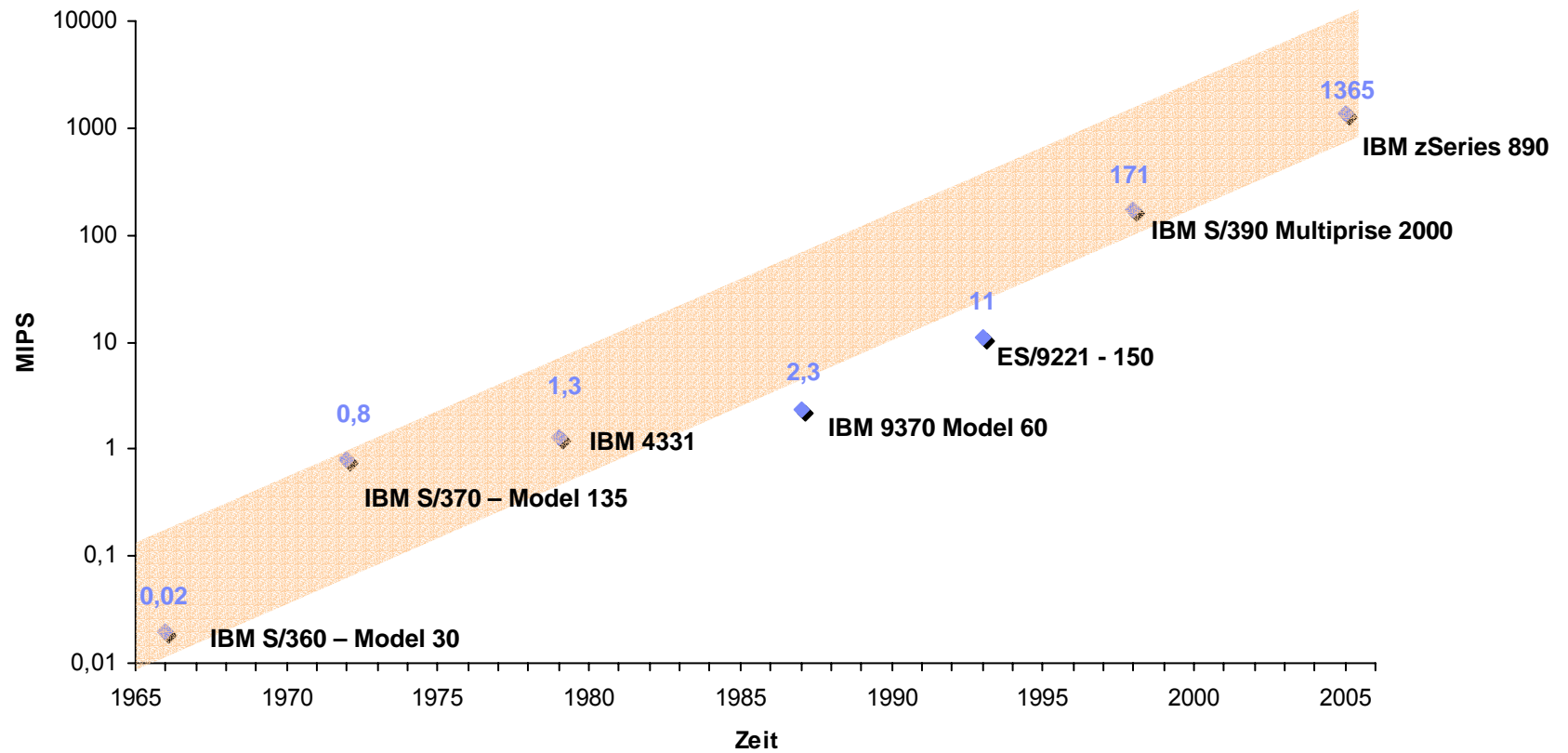
10KB

## SUPERVISOR

- ▶ Physical Transient Area (1kb)
- ▶ Logical Transient Area (1kb)

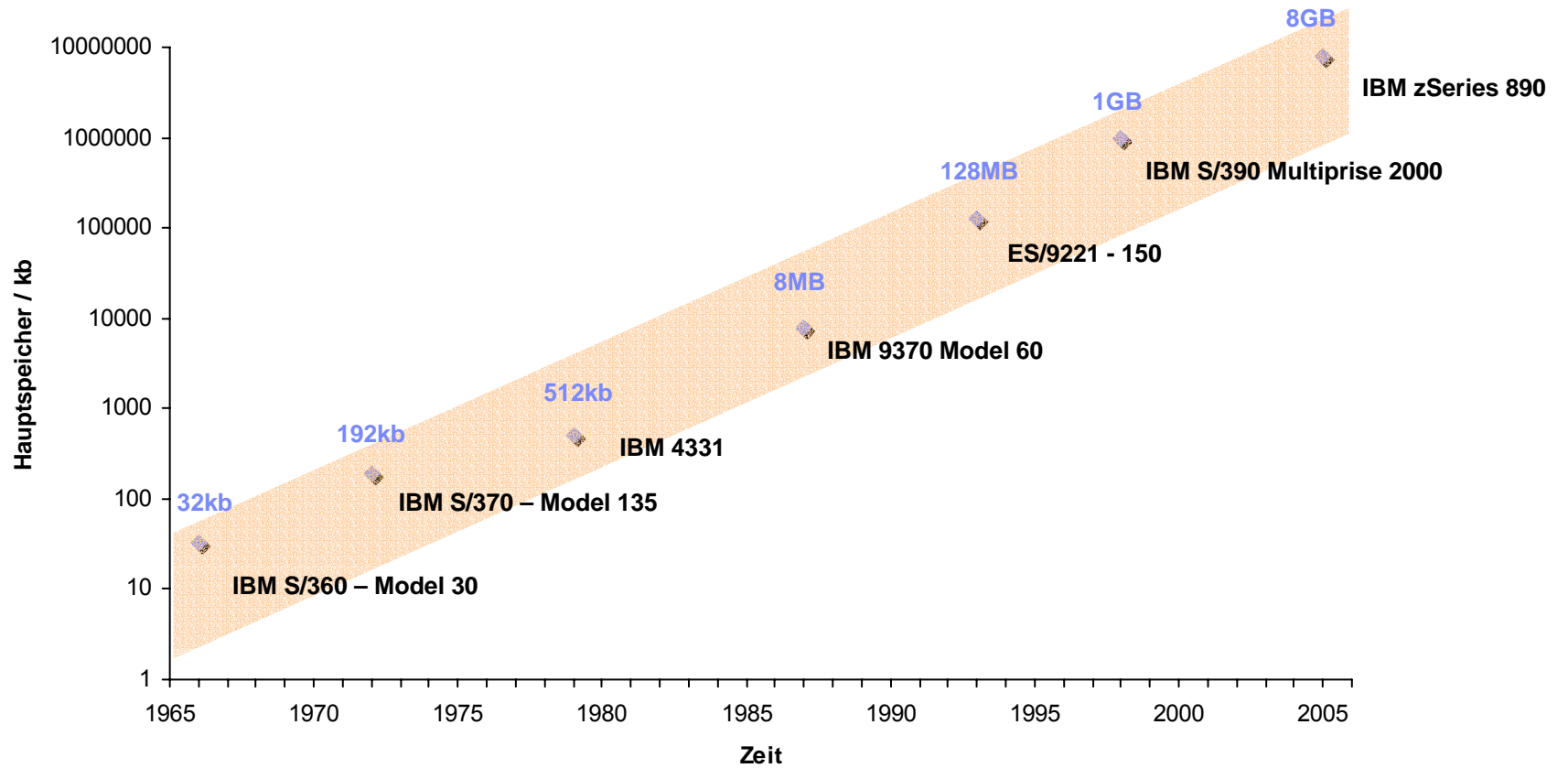
## BENUTZERPROGRAMME

- ▶ Dynamisch ladbare Systemprogramme
  - JCL
  - Librarian
  - Linkage Editor
  - Emulatoren /z.B. 1401)
  - SORT
  - .....



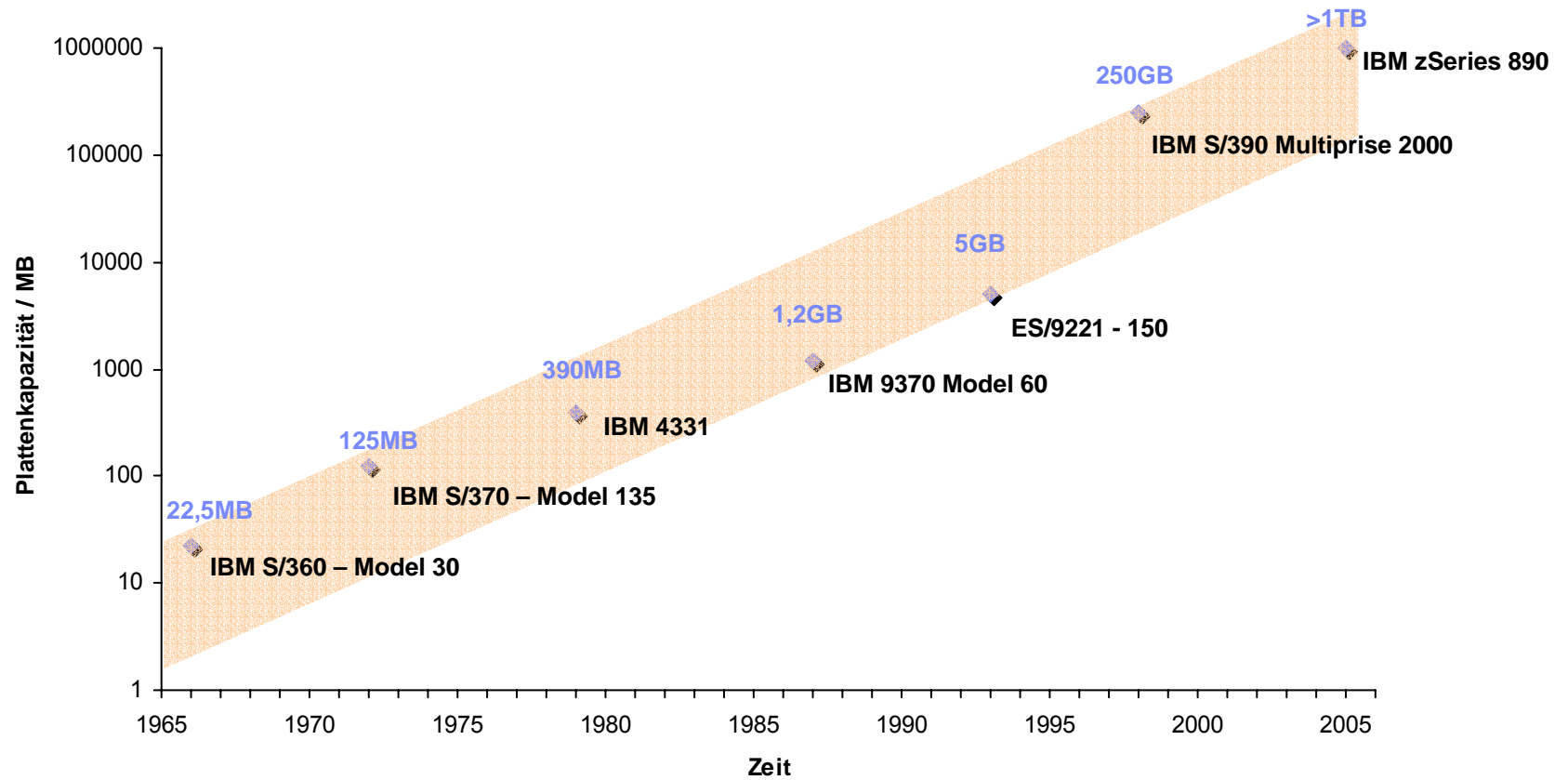


# Hauptspeicher



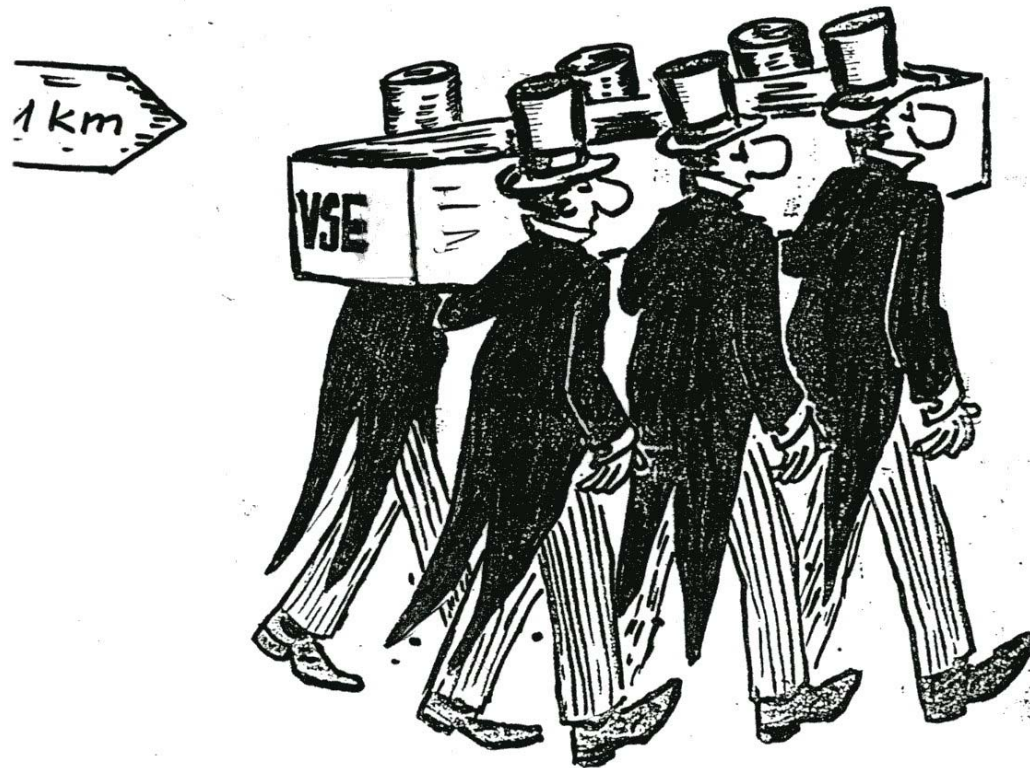


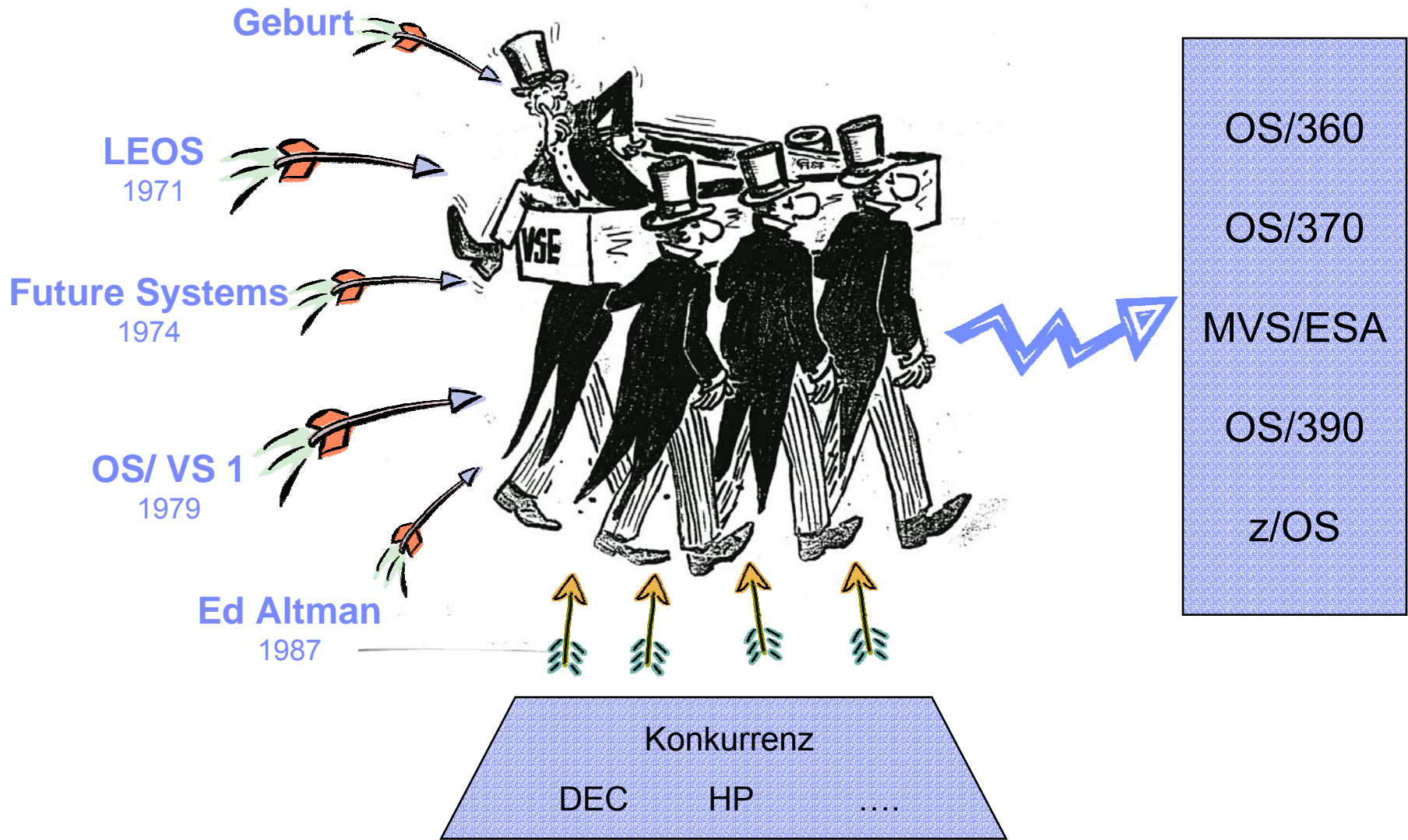
# Plattenspeicher





# Aus dem Leben von VSE







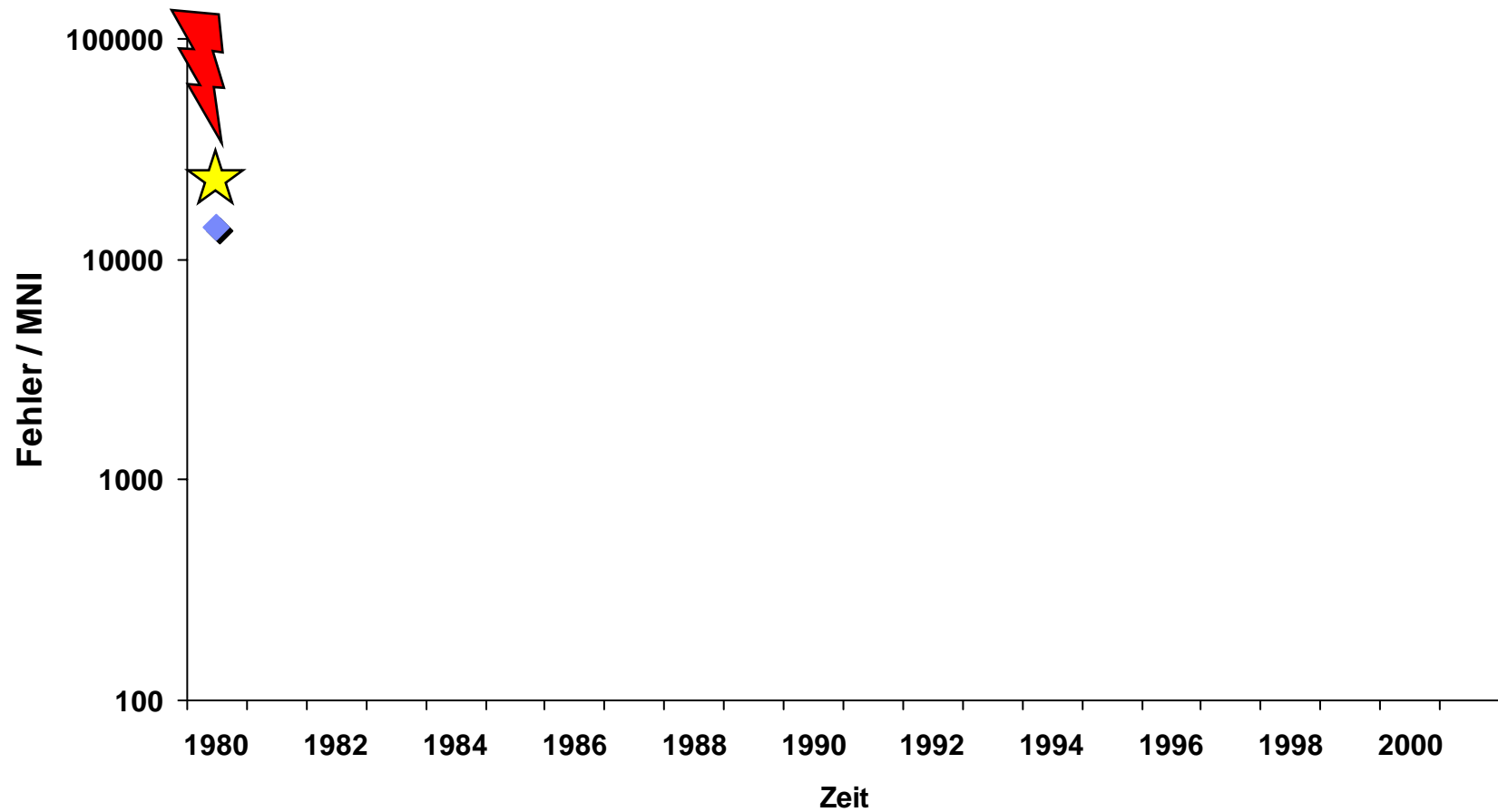
# Unsere Kunden





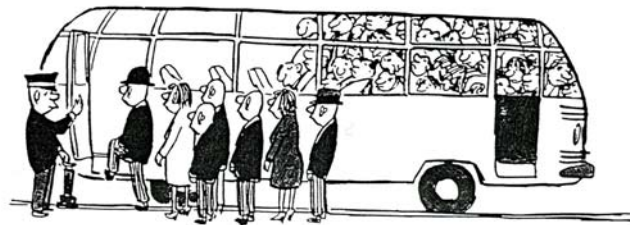
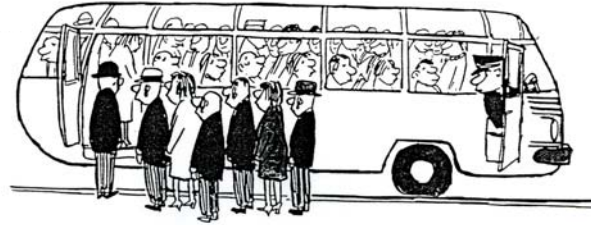


# Entwicklungsqualität



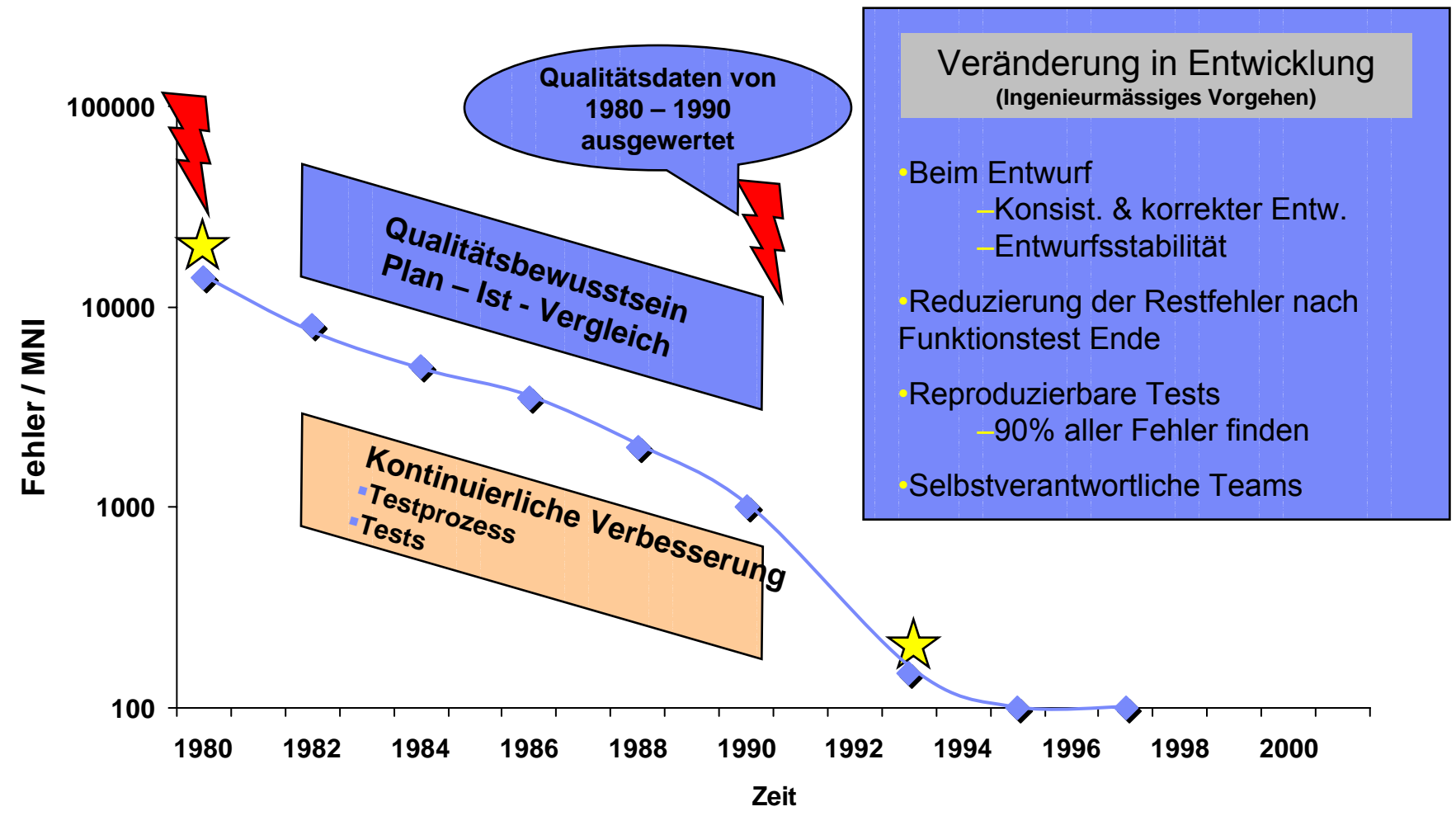


# Ingenieurmässiges Vorgehen





# Entwicklungsqualität





## Einige Fehler



Man erzählt sich, dass alles mit einem Fehler in einem Programm begann.



Hallo Supervisor ...



11. April 1980



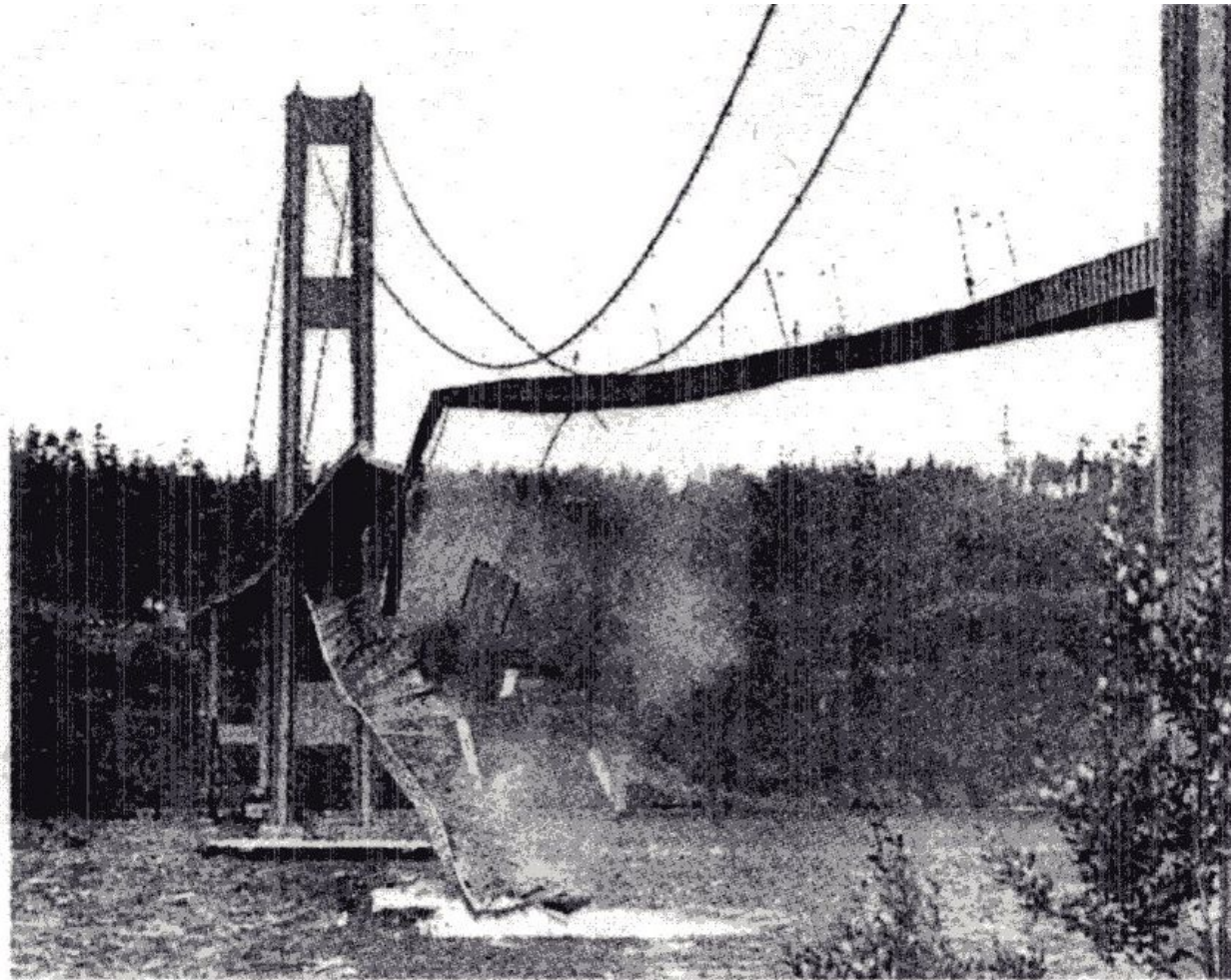


# Hallo Supervisor

```
Session A - [24 x 80]
File Edit View Communication Actions Window ZipPrint Help
Ready; T=0.01/0.01 14:21:33
SPECIFY YOUR SUPERVISOR NAME.
STEVE A. SMITH
SUPERVISOR NOT FOUND
RUNNING EMEAVM2
MR a 23/001
Connected to remote server/host tn3270.de.ibm.com using lu/pool FU0V8769 and port 23
EPSON Stylus C70 Series LPT1 on LPT1:
```

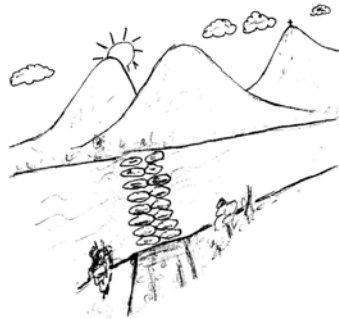


Qualität





# 40 Jahre VSE



3000 v. Chr.

1930



um Chr. Geburt

1966



2000

2005









40 Jahre VSE



Vielen Dank...



© 2005 IBM Corporation