

LOTUSPHERE 2002

Lotus software

PROOF POSITIVE

SHARE 98 Session 8615
Domino 6 Server Overview

Rufus Woody III
Domino/zSeries Technical Support
IBM Advanced Technical Support

IBM

- ▶ Step #1
- ▶ introduce the title
- ▶ Introduce Ray and Ted
- ▶ Introduce team members in the audience
- ▶ Step#2
- ▶ Domino 6 tagline - Productivity, anywhere.
- ▶
- ▶ Domino 6 themes - Increase productivity and lowers costs or ownership
- ▶ Benefit derived from listening to our presentation
 - ▶ First of all Domino 6 continues to drive down your Cost of Ownership
 - ▶ We continue to Improve your Return on Investment in Domino
 - ▶ Finally, Domino 6 improves Global awareness
- ▶ Domino 6 elevator pitch:
- ▶ Today you need the ability to operate at peak efficiency wherever you are. With Domino Rnext, you have it. Domino Rnext enables you to communicate and use line-of-business applications the same whether you're in your office or half a world away. It fits seamlessly into your existing infrastructure, extending it over the Web and via mobile devices to provide access where and when you need it. And Rnext's scalability and reliability mean your total cost of ownership stays low. Domino Rnext means you can produce: efficiently, effectively, anywhere.
- ▶
- ▶ So now let's go one level deeper and talk about the key areas we will focus on in this presentation.

What does Domino 6 offer you?

- **Performance and Reliability**
- Powerful Administrative Tools
- Standards-based Directory Support
- Enhanced Security
- World-class Messaging
- Built-in Globalization
- Domino (R5) server add-ins

Increase productivity and lowers cost of ownership

LOTUSPHERE 2002

Lotus software

Performance and Reliability

- Fault Recovery
- Database Improvements
- Network Enhancements
- Clustering Enhancements
- Web Server
- Full Text and Formula Engine

LOTUSPHERE 2002

Lotus software

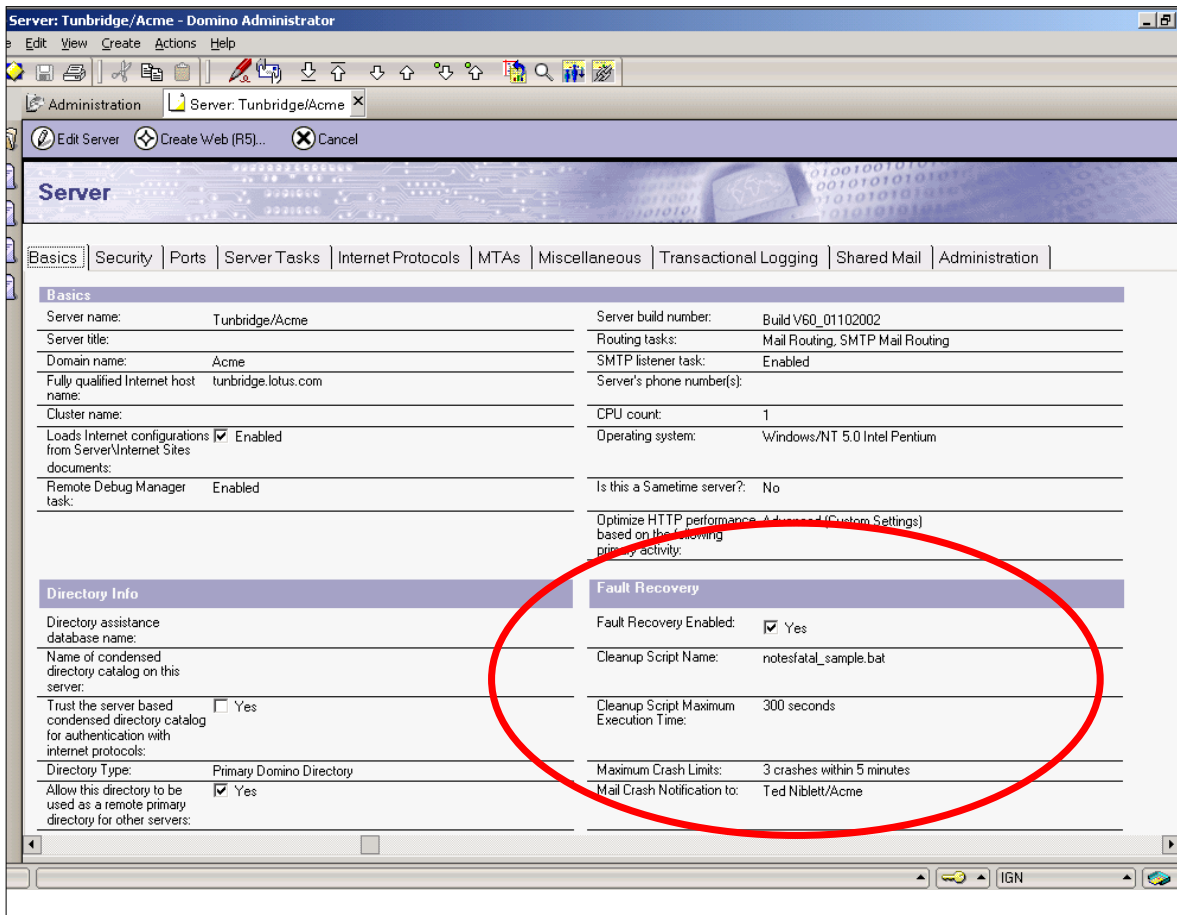
Fault Recovery

- Automatic cleanup and restart
- Simplified management through Server doc
- Java Controller for out-of-band management

LOTUSPHERE 2002

Lotus software

- ▶ Domino Rnext offers automated crash recovery on all platforms. This has been around for a while on UNIX, but configuration was managed through the server's notes.ini, which made it somewhat complicated to centralize (it could be done through the NOTES.INI section of a server configuration document). In Rnext, automated fault recovery is configured centrally in the Domino Directory, and provides additional options not available in R5:
 - ▶ Fault Recovery Enabled: Y/N
 - ▶ Cleanup Script Name: refers to a batch file or shell script in the server's data directory that typically calls nsd to take a system snapshot, remove any leftover processes and shared memory segments, and restart the server
 - ▶ Cleanup Script Maximum Execution time - mostly self-explanatory. If script execution runs too long, WHAT DO WE DO?
 - ▶ Maximum crash limits - keeps a server from getting stuck in crash loops. When the limit is reached (e.g., 3 in 5 minutes), the server stays down.
 - ▶ Mail Crash Notification - let admins know that we've restarted after crash
- ▶ Additionally, if the Java Controller is running on the server, an administrator listed with System Administrator or Full Administrator rights in the server doc can send shell commands to the downed server's host OS through the Domino Console (TCP port 2050), allowing him or her to clean up from the crash manually when it's not possible to reach Domino on port 1352.



- ▶ rem Switch to the data directory of the current partition
- ▶ cd %Directory%
- ▶
- ▶ rem Run nsd to capture crash information
- ▶ nsd.exe -batch
- ▶
- ▶ rem Kill all Domino processes
- ▶ nsd.exe -kill
- ▶
- ▶ rem Restart server
- ▶ nserver.exe
- ▶
- ▶ @echo off

Domino 6 Database Enhancements

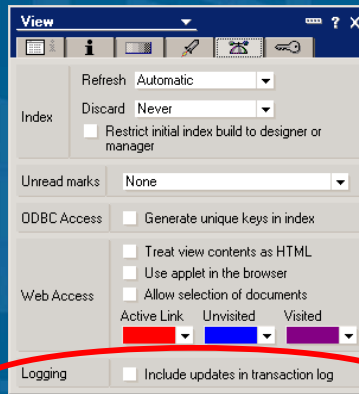
- New database format (ODS 43)
- Better attachment compression
- Single-Copy Template (SCT)
- Alternative quota methods
- Transaction logging improvements
- Document locking

LOTUSPHERE 2002

Lotus software

- ▶ Record locking within a database can improve performance by reducing contention for a file. Instead of locking an entire file when a single user writes to the database, Rnext introduces record locking, allowing multiple transactions (writes) to take place concurrently, as long as they don't overlap. Record locking is invisible to users.
- ▶ LZ1 attachment compression is a new option in ODS 43 databases, typically improving attachment compression by 10-50%. To avoid the overhead of on-the-fly conversion for R5 servers and clients, LZ1 should be enabled after all clients and servers have upgraded to Rnext
- ▶ SCT lets administrators store a single copy of commonly-used design elements (think mail servers), reducing disk space requirements, time and I/O required to maintain database designs
- ▶ Alternate Quota Methods ?
- ▶ TL Improvements -View Update Logging for faster restarts. Rnext allows DB Designers to enable individual logging of key database views in the directory and in applications
- ▶ Document locking, in contrast, is entirely visible to users: If you have Author access or higher to a document, and document locking is enabled for the database, you can lock the document on any replica while you are working in it. Locking a document allows you to lock out others who have editing access so they cannot modify the document at the same time you are, even if they are working on a different replica.

Enabling Transaction Logging in View Design



LOTUSPHERE 2002

Lotus software

- ▶ Designer, Select View outline.
- ▶ option enabled on a per db basis
- ▶ can we automatically enable for all DB's ? NO

Networking Enhancements

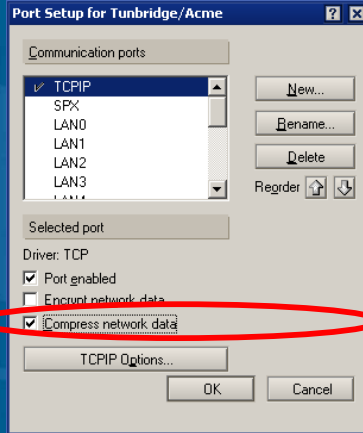
- Streaming replication minimizes effects of latency
 - VPN/dialup users
 - TCPIP only
- LZ1 data compression option reduces bytes transmitted
- IPV6 support for Internet services on UNIX servers

LOTUSPHERE 2002

Lotus software

- ▶ Streaming, which is enabled by default between Rnext endpoints, allows RNext servers and clients to read (replicate) all the incoming notes in a single transaction, reducing client, server, and network overhead, and allowing the source and destination to work independently, instead of taking turns.
- ▶ Compression, which must be explicitly enabled per-port like network encryption, allows Domino to reduce the number of bytes transferred over a network connection. Speaking of encryption, because compression is applied before network data is encrypted, compression can be used even in environments which encrypt all network data.
- ▶ Compression and streaming both require Rnext endpoints. The two features are complementary, but entirely unrelated
- ▶ IPV6 - 16 byte addresses rather than 4 byte addresses.
- ▶ IPV6 is, its the next set of standards for the Internet designed to solve a number of problems resulting from the growth of the Internet in recent years. The biggest change introduced by IPV6 is the use of 16 byte addresses rather than 4 byte addresses, so that there will be an adequate number of addresses for all far into the future.

Network Data Compression



Clustering Enhancements

- Quotas support
- Disabling Cluster Replicator
 - availability without constant traffic
- Cluster-aware Dialogs
 - Replica creation & User registration

LOTUSPHERE 2002

Lotus software

- ▶ CLREPL_OBEYS_QUOTAS - Override mail quotas assigned to DB's in a Domino Cluster. Allows document to be delivered or posted.
- ▶
- ▶ Disabling Cluster Replicator, server availability w/o network cluster network traffic - Failover only. Sch replication w/o load balancing.
- ▶
- ▶ Cluster-aware Dialogs Replica creation & User reg. Displays a list of cluster members for selection.

Web Server

- New Web Site architecture
 - simplified configuration
 - scalability and reliability
- LTPA for SSO integration with WebSphere
- WebSphere plug-ins
 - Initial support for IIS, other stacks to follow
- WebDAV = Distributed Authoring and Versioning

LOTUSPHERE 2002

Lotus software

- ▶ The new Web Site architecture makes it much easier to configure a single instance of Domino to support virtual servers, but even better, it guarantees availability by letting multiple Domino servers participate in the same web site.
- ▶
- ▶ The LTPA (lightweight 3rd party authentication) token mechanism introduced in R5.0.5 still exists. It's not new to Rnext, but it's key to providing SSO integration for a seamless user experience on sites that combine Domino and Websphere technology.(basically a cookie)
- ▶
- ▶ HTTP Plugins - reverse proxy - Allows Domino to support add'l HTTP stacks in the future. For example, Apache & iPlanet
- ▶
- ▶ WebDAV - Distributed authoring. Provides a mechanism to organize your app. so, multiple developers can contribute.

Formulas and Searches

- **Formula Engine**
 - Faster Agent Execution, View Refresh, Form Rendering
- **Full Text Engine**
 - Better Resource Utilization
 - Faster Boolean Searches

LOTUSPHERE 2002

Lotus software

- ▶ Formula Engine - these fall into the category of low-level performance improvements that end-users will notice.
- ▶ FT Engine - The exception may be the FT engine, which improves its memory management by integrating with Domino's UBM (universal buffer manager, introduced in R5)

What does Domino 6 offer you?

- Performance and Reliability
- **Powerful Administrative Tools**
- Standards-based Directory Support
- Enhanced Security
- World-class Messaging
- Built-in Globalization

LOTUSPHERE 2002

Lotus software

Administration

- Policy-based Management
- Roaming User Support
- Smart Update
- All-New Web Administrator Client
- AdminP
- Console Improvements
- Tivoli Advanced Monitoring Addin

LOTUSPHERE 2002

Lotus software

Policy-Based Management

- Central Control of Domain-wide User Settings
 - Registration defaults
 - Archive settings
 - Desktop and client version management
 - Welcome Page Deployment
 - Password Management
 - more...

Roaming User Support

- Notes 6 Client Desktop secured on roaming server
 - ID File, bookmarks, address book, &c.
- Portable preferences
- Replication keeps central files updated
- Configurable, automated cleanup

LOTUSPHERE 2002

Lotus software

- ▶ roaming users may launch Notes from virtually any workstation. Instead of taking their address book, ID file, journal, and bookmarks with them on a CD or Zip drive, they access these files on a Domino server, effectively running an abbreviated setup to retrieve their ID file and other data the first time they start Notes from a given workstation. Much of the information previously stored in desktop5.dsk is now stored in the user's bookmarks, so it roams easily
- ▶ Cleanup is configurable per-user by the administrator: a roaming user's data may be purged after a period of inactivity, each time the user exits Notes, or never.

Lotus Notes Smart Upgrade

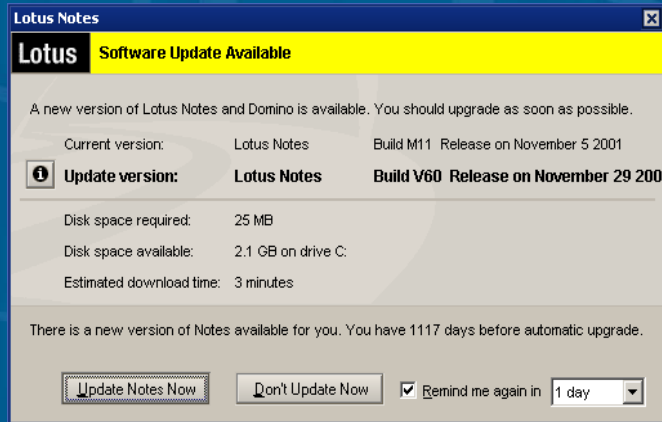
- Central control of Notes 6+ client upgrades
- Targeted rollout via policies
- No deskside visit required

LOTUSPHERE 2002

Lotus software

- ▶ Smart Update adds components to the Rnext client and server that make it easier than ever for administrators to upgrade users to new releases of Notes.
- ▶ The heart of Smart Update is a database which contains either attached update kits, or pointers to these kits on a file server.
- ▶ Because this database is advertised to all the servers in a domain via the global server configuration document, it's accessible to all via the domain catalog, so it doesn't have to reside on every server in the domain (though of course it can)
- ▶ Policies are the link between the Smart Update database and the users: Administrators specify a target version and a must-upgrade date in a desktop settings document. When Rnext clients authenticate with their home servers, they retrieve the desktop settings via dynconfig, and prompt the user to upgrade. If the user chooses to upgrade immediately, or if the mandatory upgrade date has passed, the Rnext client downloads the update kit, exits, installs the upgrade, and restarts. In beta, there's also a menu option that allows users to check for client updates manually. It's not certain whether that will ship.

Smart Upgrade Prompt



LOTUSPHERE 2002

Lotus software

Web Administrator Application

- Admin client interface and features via HTTP
 - Netscape 4.7x and IE 5.5+
- Role-Based UI
- ACL Repair
- User Registration
- Database Tools

LOTUSPHERE 2002

Lotus software

- ▶ The new web administrator application is so much like the Domino Administrator client that it's easy to take it for granted: users familiar with the Domino Administrator will be immediately productive

Start | Lotus Domino Server: T... | Tunbridge/Acme Web A... | Compact Database - ... | 11:57 AM

Tunbridge/Acme Web Administration - Microsoft Internet Explorer

Back Forward Stop Refresh Home Search Favorites Media History Mail Print Edit Discuss

Address http://tunbridge.lotus.com/webadmin.nsf?OpenDatabase

People & Groups | Files | Server... | Messaging... | Replication | Configuration | Help | Preferences | Logout

Server: Tunbridge/Acme
Host: tunbridge.lotus.com

Show me: Databases only - 24 Refresh Tools

C:\Lotus\Domino\Data

- domino
- gtrhome
- help
- icl
- iNotes
- mail
- w32
- Catalog (V6)

Title	Filename
Java AgentRunner	AgentRunner.nsf
Administration Requests (R6)	
Bookmarks (R6)	
Catalog (V6)	
Server Certificate Admin	
Cluster Directory (R6)	
Local free time info	
Domino Server.Planner Sample	
DbDirManCacheDb	
Offline Services	
Domino Server.Planner User Gui	
Monitoring Configuration	
homepage	
Notes Log (Tunbridge/Acme)	
Acme's Directory	
Reports for Tunbridge/Acme	
Domino LDAP Schema	
Domino Configuration (6.0)	
Smart Update Kist	
Tunbridge Stats/Acme	
Monitoring Results	
User Registration Queue	
Web Admin (R6)	webadmin.nsf
Welcome Pages &c.	welcomepages.nsf

Compact Database - Microsoft Internet Explorer

Use this tool to compact and archive databases. Only previously configured databases can be archived.

Selected: 3 Databases

Compact only if unused space is greater than 15 %

Discard any built view indexes

Set maximum size of database to 4GB

Keep or revert database back to R5 format

Archive database

How should the database be compacted?

In-place (recommended)

In-place with file size reduction

Copy style Allow access while compacting

Ignore errors during compaction

OK Cancel

Internet

AdminP Enhancements

- Rename Web-only users
- Manage all Names fields
- Manages names in multiple directories
- Improved handling of ACLs, Names field updates
- xAdmin servers share Directory management

Console Enhancements

- Client-based Event Handling
- Filtering by Event Type and Severity
- Stop Triggers
- Color and Font Controls
- Event Information
- Fixed command entry field
- Standalone Domino Console (Java)
 - Java Controller

Administration Live Console Help

Administration

People & Groups Files Server... Messaging... Replication Configuration

Status Analysis Monitoring Statistics Performance

Server: Tunbridge/Acme
Windows NT 5.0

Server Tasks
Server Users
Database Users
Server Console
Schedules
Programs
Agents
Mail Routing
Replication

Events

- 12/11/2001 03:29:07 PM IMAP4 Invalid Atom Character String.
- 12/11/2001 03:29:10 PM Unknown operator in field query.
- 12/11/2001 03:29:13 PM MT Collector: No message tracking state file
- 12/11/2001 03:29:16 PM Notes requires a NetWare OS/2 Requester
- 12/11/2001 03:29:19 PM Unknown NetWare Error
- 12/11/2001 03:29:22 PM Warning: Cannot record event - cannot keep
- 12/11/2001 03:29:25 PM Bad parameters to API function
- 12/11/2001 03:29:28 PM TEST001[1244620]: Unable to get translation
- 12/11/2001 03:29:31 PM AMgr: Error executing agent '<string>' in '<f
- 12/11/2001 03:29:34 PM Test event generator message TEST001, t
- 12/11/2001 03:29:34 PM NNTP Server: Timeout waiting for response
- 12/11/2001 03:29:37 PM Too many pages in prefetch page list - list l
- 12/11/2001 03:29:40 PM The Administration Process is waiting for cr
- 12/11/2001 03:29:43 PM NETBIOS not loaded or not running
- 12/11/2001 03:29:46 PM error: proxy connect to '<string>' port '<number>' failed
- 12/11/2001 03:29:49 PM The Administration Request database - '<string>' - on '<string>' is currently a wildcard replica.
- 12/11/2001 03:29:52 PM Error opening modem command file
- 12/11/2001 03:29:55 PM Specified private key does not exist
- 12/11/2001 03:29:58 PM NNTP: Received NTI buffer
- 12/11/2001 03:30:01 PM Lite transaction attempted over passthru
- 12/11/2001 03:30:04 PM Error processing message list
- 12/11/2001 03:30:07 PM Test event generator message TEST001, 1244620, TEST003.
- 12/11/2001 03:30:07 PM Insufficient network, or adapter resources. Consult Network documentation to increase the maximum number of sessions.: Server
- 12/11/2001 03:30:10 PM Object Store for
- 12/11/2001 03:30:13 PM Insufficient memory - Job Scheduling Path Cache Pool is full.
- 12/11/2001 03:30:16 PM Proxy Server: Endpoint initialization failed.

Server Console

Font	Size	Style
Courier	8	Plain
Courier New	10	Bold
Courier New CE	12	Italic
Courier New CYR	14	Underline
Courier New Greek	18	Strikethrough
Courier New TUR	24	Superscript
Default Monospace		Subscript
Default MultiLingual		Shadow
Default Sans Serif	8	Emboss

Domino Command: Send Commands...

The Domino Java Console

The screenshot shows the Domino Console application window. The title bar reads "Domino Console". The menu bar includes "File", "Edit", "View", "Commands", and "Help". The main area displays system logs with the following content:

```
User: localAdmin
Platform: Windows/NT 5.0 Intel
Server: Tunbridge/Acme

12/11/2001 03:16:42 PM You must first open the ID file before attempting that operation
12/11/2001 03:16:45 PM DNS Resolver failed to initialize.
12/11/2001 03:16:48 PM Unable to send mail; no match found in Name & Address Book(s)
<consoletext seqnumber="000000AD" password="false" prompt="false" time="006F6808-85256B1F" execname="eÀ" proci
12/11/2001 03:16:54 PM Test event generator message TEST001, 1244620, TEST003.
12/11/2001 03:16:54 PM No formula specified
<consoletext seqnumber="000000B0" password="false" prompt="false" time="006F6A62-85256B1F" execname="eÀ" proci
12/11/2001 03:17:00 PM <Database Driver>Too few values supplied to where-parms
12/11/2001 03:17:03 PM Internet Messaging Extension error: No temporary object store.
<consoletext seqnumber="000000B3" password="false" prompt="false" time="006F6DE7-85256B1F" execname="eÀ" proci
<consoletext seqnumber="000000B4" password="false" prompt="false" time="006F6F16-85256B1F" execname="eÀ" proci
12/11/2001 03:17:12 PM Unable to find the Notes SPX SAP Daemon DLL.
12/11/2001 03:17:15 PM There is not enough memory available to launch the application. To make more memory av
<consoletext seqnumber="000000B7" password="false" prompt="false" time="006F729A-85256B1F" execname="eÀ" proci
12/11/2001 03:17:21 PM [0584:0002-0438] POP3Client: TEST001
12/11/2001 03:17:24 PM Unable to load saved search; search is corrupt.: Server not responding
12/11/2001 03:17:27 PM Test event generator message TEST001, 1244620, TEST003.
12/11/2001 03:17:27 PM <Database Driver>Corrupted envblk
12/11/2001 03:17:30 PM Unable to open log file
```

At the bottom of the window, there is a "Domino Command:" input field, a "Send" button, and a "Commands ..." dropdown menu. Below this, there is a section for "Show events of these types:" with several checkboxes:

- Fatal
- Failure
- Warning(High)
- Warning(Low)
- Normal
- Unknown

The background of the slide features a blue grid pattern with a yellow banner at the bottom left containing the text "LOTU" and a "tware" logo at the bottom right.

Tivoli Advanced Monitoring Addin

- Runs inside the Domino Administrator Client
- Server Health Monitoring
 - reports responsiveness of key components
 - recommends corrective actions
- Activity Trends
 - analyzes server activity by user/protocol/DB
 - isolates trouble spots
 - workload balancing
 - stability and predictability

What does Domino 6 offer you?

- Performance and Reliability
- Powerful Administrative Tools
- **Standards-based Directory Support**
- Enhanced Security
- World-class Messaging
- Built-in Globalization

LOTUSPHERE 2002

Lotus software

Directories

- Central Directory
- xSP & xACL
- LDAP Enhancements
- ADSync

LOTUSPHERE 2002

Lotus software

Central/Configuration Directory Option

- Two components to Domino Directory:
 1. Domain Configuration detail (small)
 2. User Directory (potentially large)
- Centralizing #2 reduces footprint
 - Configuration still on every server
- Address resolution, Group expansion via Directory Assistance

xSP Hosting

- Secures multiple organizations on a single instance of Domino
- Virtual Directory
 - Each organization isolated
- Extended ACL (xACL) refines directory access control

LDAP Enhancements

- Authentication for all Internet protocols
- Faster LDAP queries
- Replicating LDAP Schema DB
- LDAP Upgrade Service

LOTUSPHERE 2002

Lotus software

Active Directory Integration

- Seamlessly manage two user directories from a single console
- ADSync snap-in to MMC automates Domino Directory updates
 - User registration & deletion
 - Name changes
 - Group management

Pushing Existing AD Users to Domino

The screenshot shows the 'Active Directory Users and Computers' console window. The 'Tree' pane on the left shows the hierarchy: Active Directory Users and Computers [pe] > ibm.com > Users. The main pane displays a list of 20 objects:

Name	Type	Description
Administrator	User	Built-in account for admini...
Cert Publishers	Security Group ...	Enterprise certification an...
DnsAdmins	Security Group ...	DNS Administrators Group
DnsUpdatePr...	Security Group ...	DNS clients who are permi...
Domain Admins	Security Group ...	Designated administrators...
Domain Comp...	Security Group ...	All workstations and serve...
Domain Contr...	Security Group ...	All domain controllers in th...
Domain Guests	Security Group ...	All domain guests
Domain Users	Security Group ...	All dom...
Enterprise Ad...	Security Group ...	Design...
Group Policy ...	Security Group ...	Membe...
Guest	User	Built-in
IUSR_PENDR...	User	Built-in
IWAM_PEND...	User	Built-in
krbtgt	User	Key D...

A dialog box titled 'Choose Registration Options for Windows Users and Groups' is overlaid on the right. It contains the following text and options:

You have 1 user(s) and 2 group(s) pending Notes registration.

- Prompt for the name and password of each user, and for name and members of each group
- Register users and groups at once without additional prompts; use defaults (Generated Notes passwords will be saved to ntsync45.nsf)
- If error happens during registration of some users and/or groups, try to register them later
- If registration is cancelled for some users and/or groups, try to register them later

Buttons: Register now, Register later, Do not register, Help

LOTUSPHERE 2002

Lotus software

What does Domino 6 offer you?

- Performance and Reliability
- Powerful Administrative Tools
- Standards-based Directory Support
- **Enhanced Security**
- World-class Messaging
- Built-in Globalization

LOTUSPHERE 2002

Lotus software

Security

- Certificate Authority process
- Notes-HTTP Password synchronization
- Password & ECL management
- SmartCard support

Certificate Authority

- Secure, delegated certificate management
- Single process (CA) integrates Notes and Internet certification
- Separates registration from certificate ownership

LOTUSPHERE 2002

Lotus software

Password Management

- Admin can enable Notes->HTTP password sync
 - Notes ID password change initiates automatic HTTP password update
- Simple to change password length/quality settings
- Policies centralize password checking options and ECLs

What does Domino 6 offer you?

- Performance and Reliability
- Powerful Administrative Tools
- Standards-based Directory Support
- Enhanced Security
- **World-class Messaging**
- Built-in Globalization

LOTUSPHERE 2002

Lotus software

Messaging

- Archiving
- Server Rules
- Out of Office Agents
- Quota Management
- RBL Support
- Shared Mail

LOTUSPHERE 2002

Lotus software

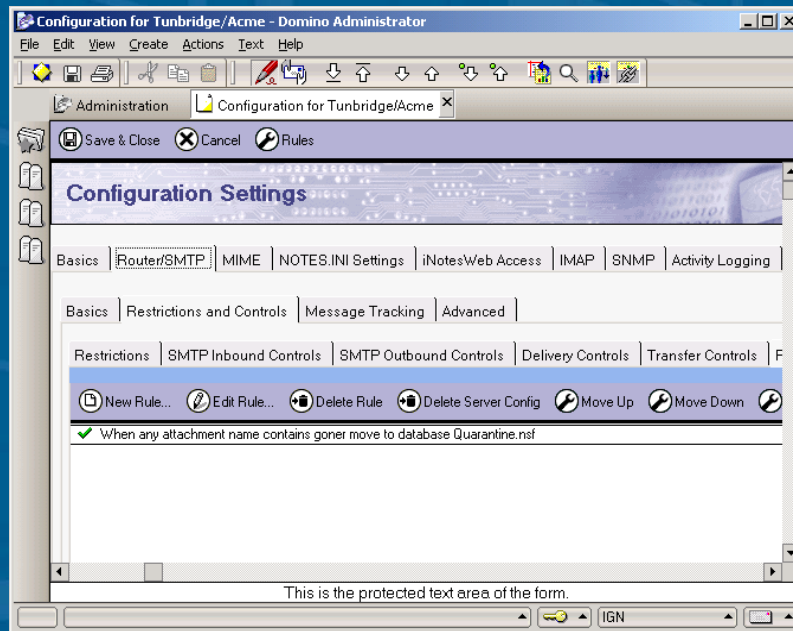
Rnext Archiving Architecture

- Giving control back to Administrators
 - prohibit archiving completely
 - restrict users' private settings
- Managed by Policies
 - enterprise-wide standards
- Archive to another server
- Attachment pruning
- Folder-based archiving

Server Mail Rules

- Define conditions and actions for mail filtering
 - Journalling
 - Blocking spam
 - Intercepting questionable content
- Works in conjunction with antivirus software

Server Mail Rules

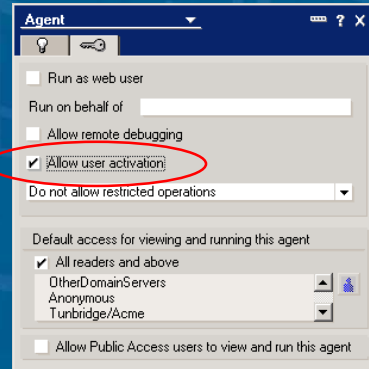


LOTUSPHERE 2002

Lotus software

Out of Office Agents

- R5 requires Designer access to enable Out of Office agent
- Rnext gives Editors full function



Quota Management

- Alternate quota measurement option
 - check DB usage or file size
- Cluster replicator
- Cross-client notification
- Enforcement options

Realtime Black Hole List (RBL) Support

- Optional inbound SMTP control
- Check MAPS (mail-abuse.org) for connecting host's IP address
- Log, tag, or reject mail from reported open relays

Shared Mail Enhancements

- Simplified configuration
- Multiple active shared mail DBs and directories
 - distributed I/O
- Transaction logging support
- Size-based disposition
- Quotas

LOTUSPHERE 2002

Lotus software

- ▶ shared mail is managed entirely through the server document in Rnext

What does Domino 6 offer you?

- Performance and Reliability
- Powerful Administrative Tools
- Standards-based Directory Support
- Enhanced Security
- World-class Messaging
- **Built-in Globalization**

LOTUSPHERE 2002

Lotus software

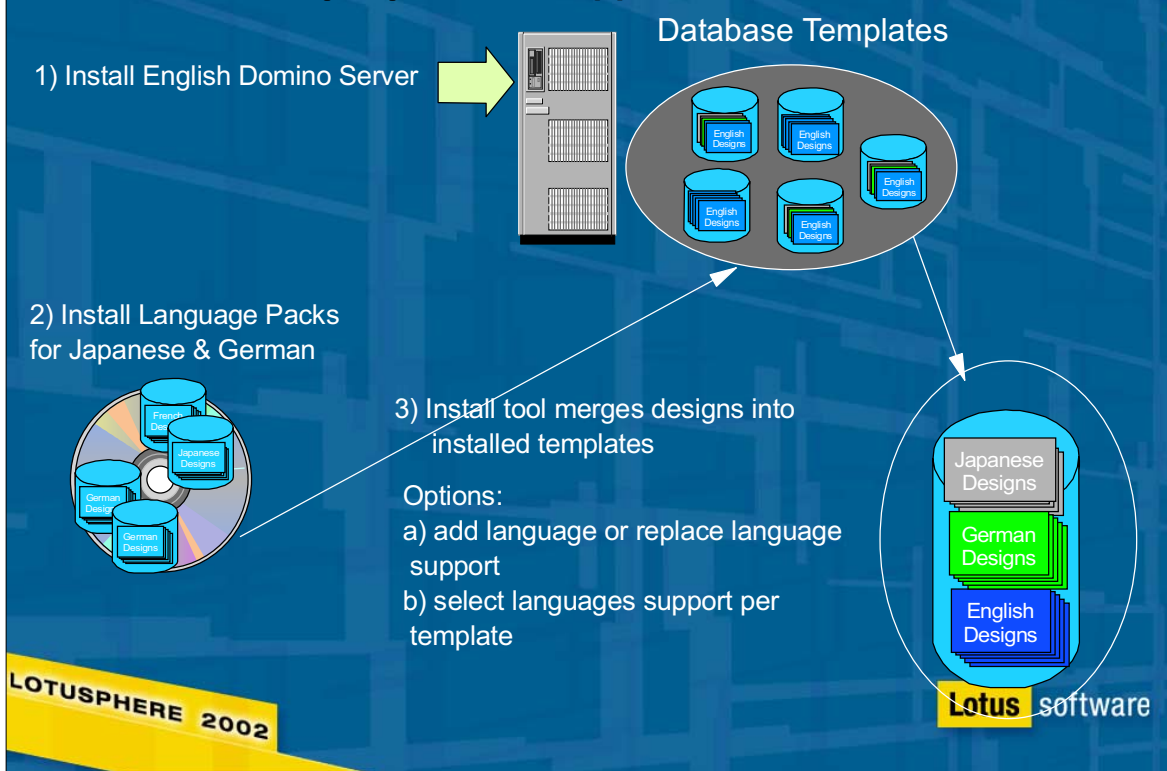
Domino 6 Global Enhancements

- One server, many languages
- Add-on language packs
- Support for multiple languages and locales on Web server

LOTUSPHERE 2002

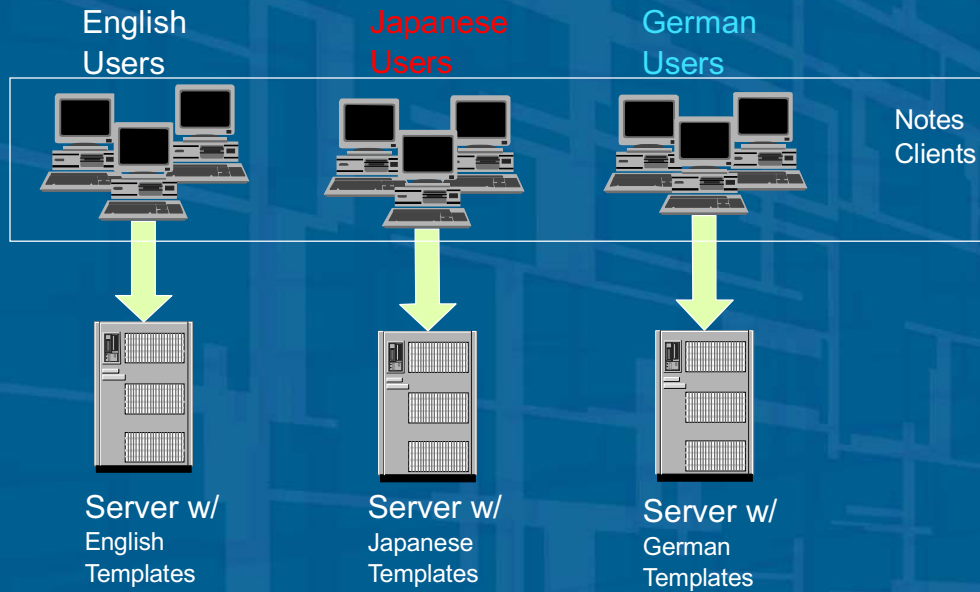
Lotus software

Language Pack Support in Domino 6



- ▶ Using Language Pack Support in Domino 6
- ▶ Multi-language templates - can add and remove language support with templates.
- ▶ you can have single or multiple language Databases supported with your multilaungage template
- ▶ or you can us any combination of languages supported by the template
- ▶
- ▶ Demo Multi-Language website

Supporting Diverse Users with R5 Servers



**Server requires templates to create and maintain applications such as Mail.
A server can host templates for only one language in R5.**

Supporting Diverse Users with Domino 6

English
Users

Japanese
Users

German
Users



Notes
Clients

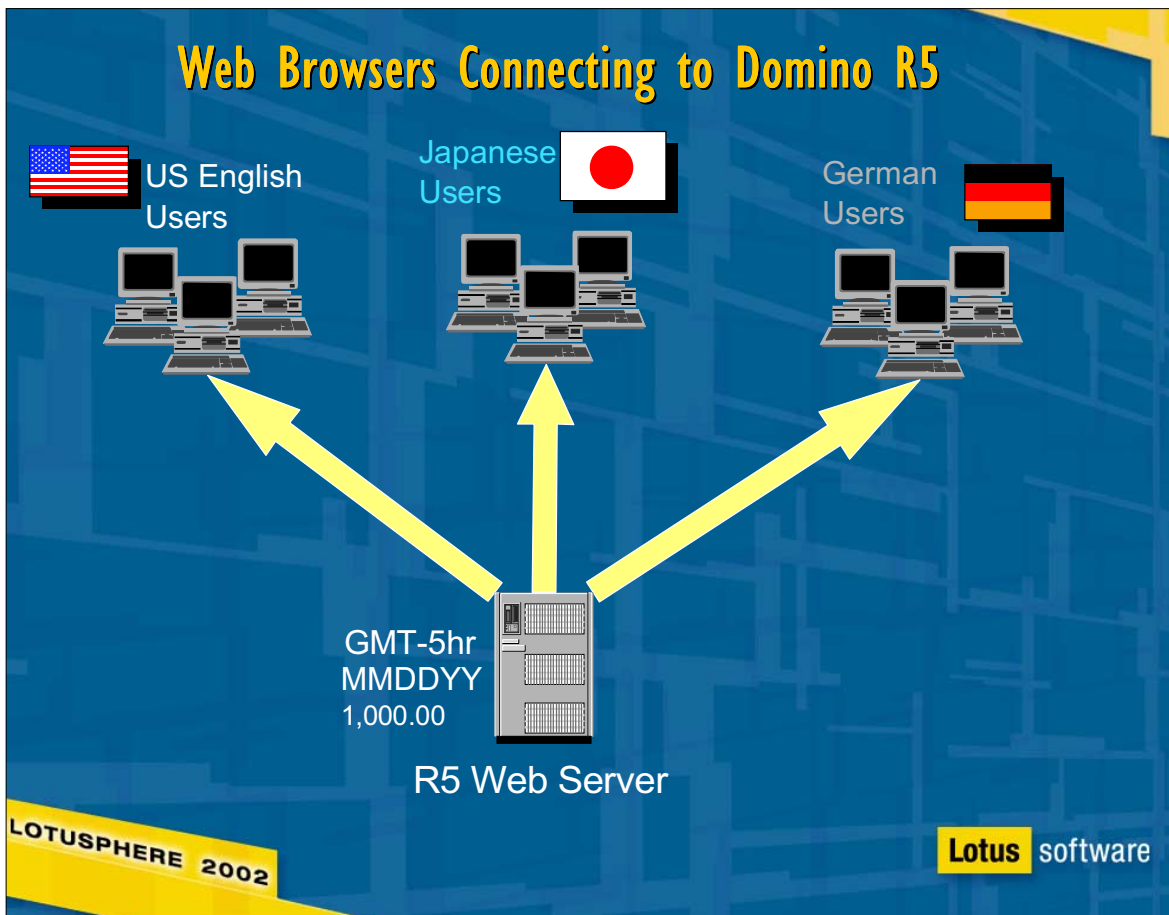
Domino 6 Server with
English, Japanese & German
Template Support

Server will host multiple language templates using Language Pack.
Require fewer servers to support diverse user population.

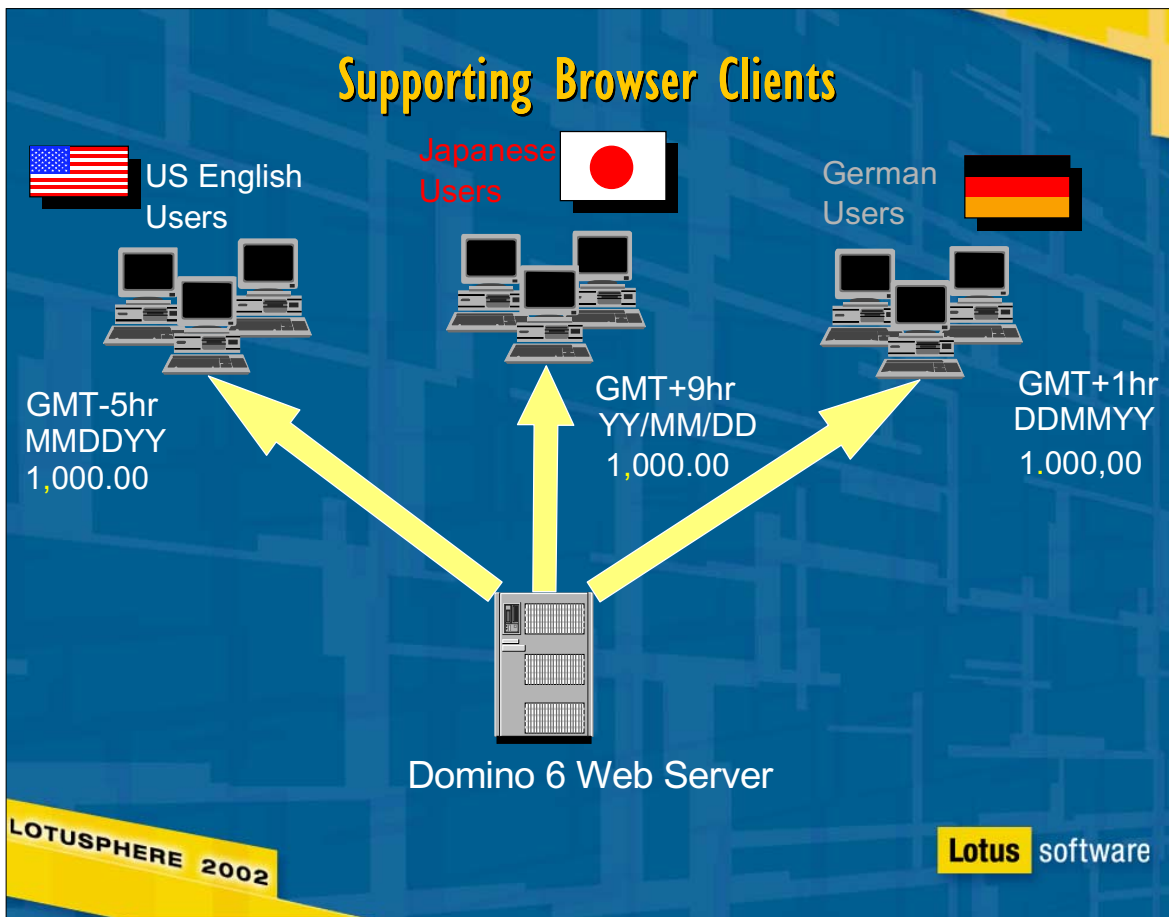
Less server + Simplified administration => Lower TCO

LOTUSPHERE 2002

Lotus software



- ▶ Server wide settings used for locale and language:
- ▶ affects text resources, time-zone, date-time etc.
- ▶ Browsers accept server settings



- ▶ Server uses the user's browser language preferences to provide each user with a more familiar and flexible user experience.
- ▶
- ▶ Users' local preference settings used for locale
- ▶ and language: time-zone, date format, & numeric format.
 - ▶ note if we were talking about the Yen - then no decimal for Japanese numeric format.
 - ▶ UI Language dependent on Browser

Summary

- Increase productivity and lowers cost of ownership
- Implement a "single" global server
- Start your early deployment campaign today

LOTUSPHERE 2002

Lotus software

- ▶ Theme - Increase productivity and lowers cost of ownership
- ▶
- ▶ YOUR ACTION ITEM
 - ▶ Implement a single global server - immediate TCO reduction
 - ▶ Start your early deployment campaign today

Q&A

- Increase productivity and lowers cost of ownership
- Implement a "single" global server
- Start your early deployment campaign today

LOTUSPHERE 2002

Lotus software

- ▶ ID201 Abstract :
- ▶ This session will begin with a quick overview of all the feature area enhancements in the Directory, Hosted Applications, Web Application, Security, Messaging and Admin. Client - just to name a few. Then, we'll dive into more detail on topics including: Network Compression, Active Directory considerations and HTTP Server enhancements. Finally, we'll discuss how these features can be used to benefit your organizations!*

Domino R5 Server Products Overview Platforms and Availability

- ▶ NT / Intel
- ▶ NT / Alpha
- ▶ Linux / Intel
- ▶ Solaris Intel
- ▶ OS/2
- ▶ HP-UX *
- ▶ AIX
- ▶ Solaris SPARC
- ▶ AS/400
- ▶ S/390

LOTUSPHERE 2002

Lotus software

What's New and/or Coming?

- ▶ **Domino Everyplace**
 - Domino Everyplace Access Server
 - Domino Everyplace Short Message Service (SMS) Server
 - Domino Everyplace Enterprise Server
- ▶ **ISP / ASP area**
- ▶ **Distance Learning**
- ▶ **Knowledge Management**
- ▶ **Workflow**

R5 Application Extensions & Frameworks Products

ASP / ISP

Operating System	AIX	Solaris Sparc	Linux	OS/400	OS/390
ASP Solution Pack	Available	Available	In Plan	Available	Not For Sale
QuickPlace	Available	Available	In Plan	Available	Available
Sametime 2.0	R1.5 Beta	In Plan	In Plan	R1.5 Beta	In Plan

LOTUSPHERE 2004



Port Complete or Underway



In Plan



Not For Sale

Lotus software

R5 Application Extensions & Frameworks Products

Distance Learning

Operating System	AIX	Solaris Sparc	Linux	OS/400	OS/390
ASP Solution Pack	Available	Available		Available	
QuickPlace		Available		Available	
Sametime 2.0	R1.5 Beta			R1.5 Beta	
LS Forum	Available	Available	In Plan	Available	Available
LS "Athena"	In Plan	In Plan	In Plan	In Plan	Not Planned

LOTUSPHERE 2004



Port Complete or Underway



In Plan



Not Planned

Lotus software

R5 Application Extensions & Frameworks Products

Operating System	AIX	Solaris Sparc	Linux	OS/400	OS/390
ASP Solution Pack	Available	Available		Available	
QuickPlace		Available		Available	
Sametime 2.0	R1.5 Beta			R1.5 Beta	
LS Forum	Available	Available		Available	Available
LS "Athena"					
Discovery Server					
Extended Search					
Domino.Doc 3.0	Available	Available		Available	Available

Knowledge Management

LOTUSPHERE 2002



Port Complete or Underway



In Plan



Not For Sale

Lotus software

R5 Application Extensions & Frameworks Products

Operating System	AIX	Solaris Sparc	Linux	OS/400	OS/390
ASP Solution Pack	Available	Available		Available	
QuickPlace		Available		Available	
Sametime 2.0				R1.5 Beta	
LS Forum	Available	Available		Available	Available
LS "Athena"					
Discovery Server					
Extended Search					
Domino.Doc 3.0	Available	Available		Available	Available
Fax Domino				Available	
Workflow	Available	Available	Available	Available	Available

Workflow

LOTUSPHERE 2004



Port Complete or Underway



In Plan



Not For Sale

Lotus software