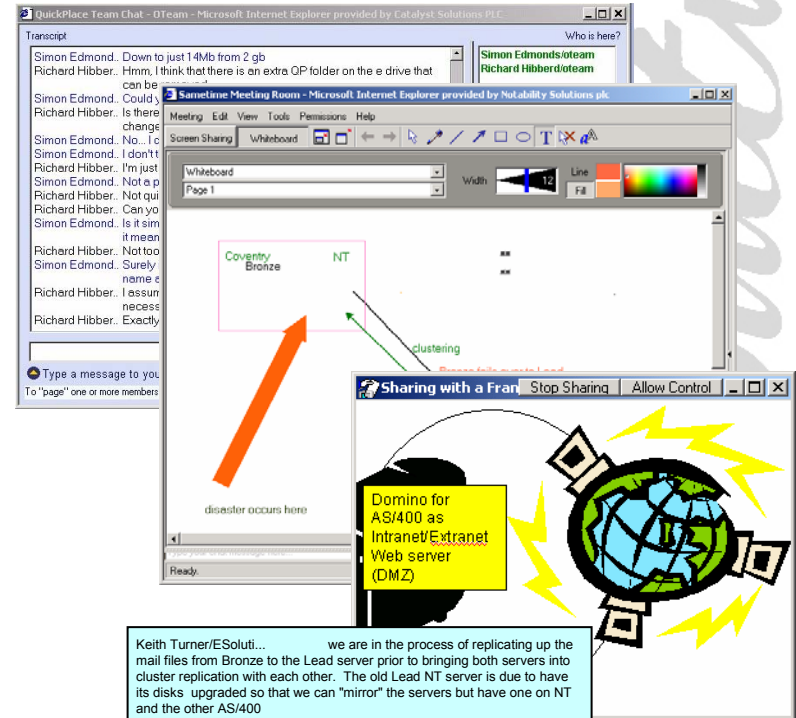
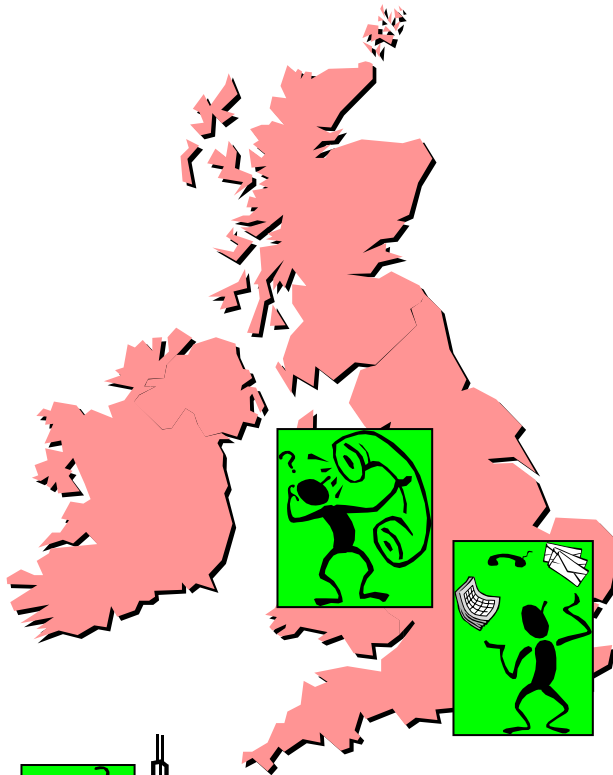


Cheap, quick, effective communication

Sametime



Keith Turner/ESoluti... we are in the process of replicating up the mail files from Bronze to the Lead server prior to bringing both servers into cluster replication with each other. The old Lead NT server is due to have its disks upgraded so that we can "mirror" the servers but have one on NT and the other AS/400

Pete Morgan/ESoluti... no disks ordered as yet - still in discussion

Keith Turner/ESoluti... This last task is taking place slowly and unfortunately has other side effects that we are trying to minimise as quickly as possible.

Mandy Shaw/ESolu... Can I put in a word here re disk space etc

Mandy Shaw/ESolu... happening? Any comments?

Richard Hibberd/ES... Lead & Bronze are to become a cluster?

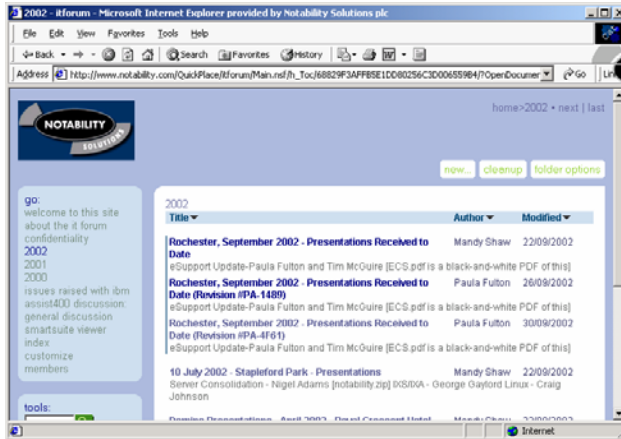
Mandy Shaw/ESolu... Yes they are

Richard Hibberd/ES... But we need more disk space?

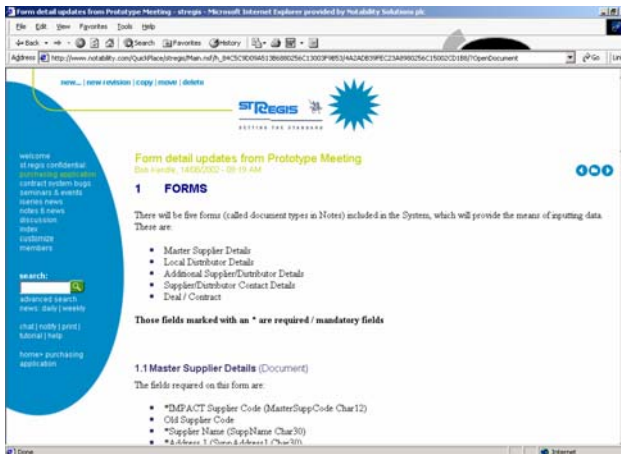


Secure collaboration over the Internet

QuickPlace



'lets IBM, Notability and the customer share project information in an easily accessible and secure way'



Business intelligence from Domino data

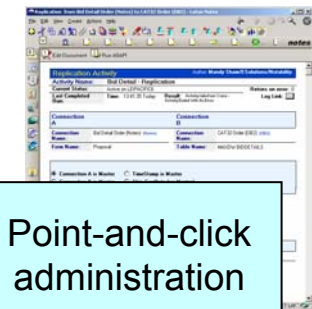
Lotus Enterprise Integrator

MaxManager and Personnel applications

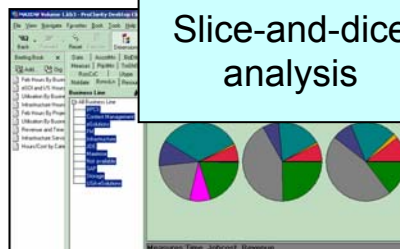
LEI

DB2 UDB on iSeries

Slice-and-dice analysis



Point-and-click administration



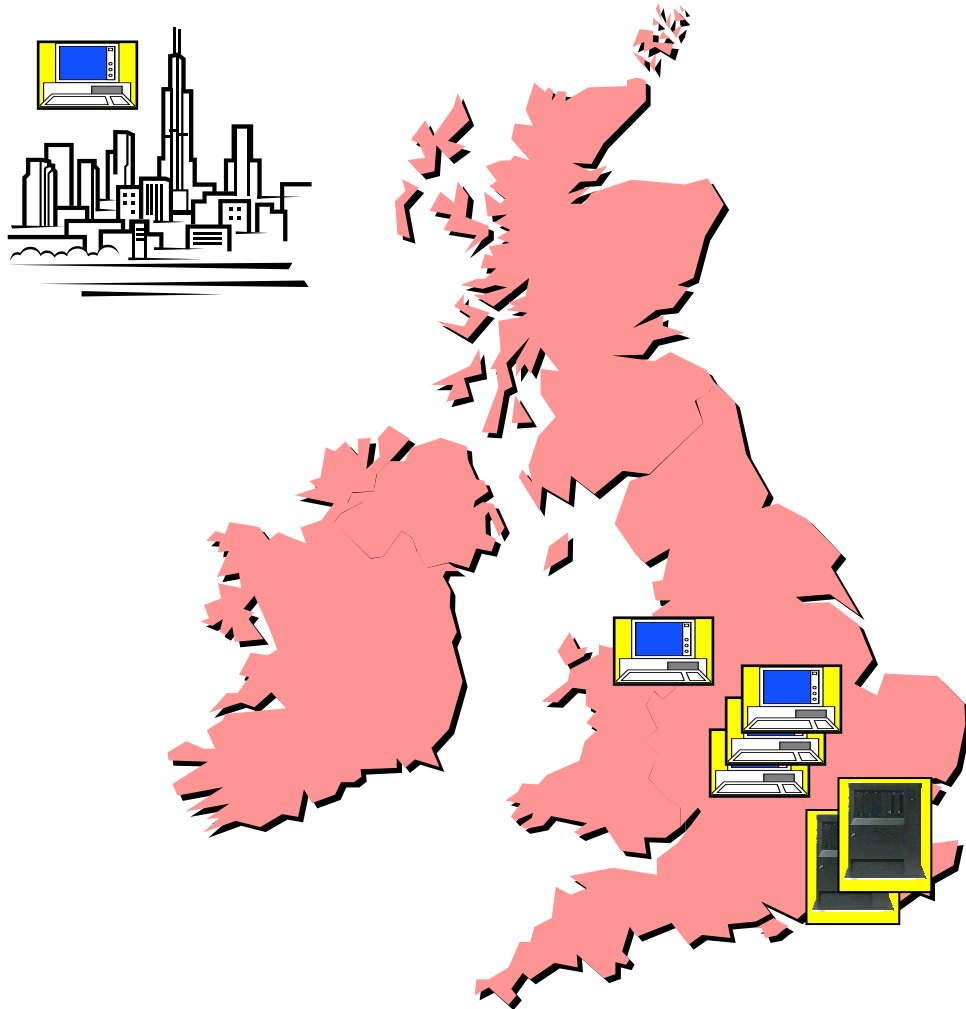
Management reporting

		Billing Year: 2002											
		Billing Month: 06											
		Employee Type: Permanent											
Cost Centre	Consultant	Number of Days											
		Type: Administration	Customer Approved	Customer Changeable	Customer Fixed Price	Customer Pre-sales	Customer Support Contracts	Customer Support (Mobility)	Departmental Support	Downtime	Education and R&D	Holidays (paid)	
BPCS Services	Consultant 1	3.20	11.77						0.33	1.00	17.53	1.00	19.53
	Consultant 2		8.67					0.27			0.13		15.43
	Consultant 3	1.80	9.60				6.33			3.00			20.07
	Consultant 4		2.40	9.60							10.00	1.00	23.00
	Consultant 5	1.67	3.60				4.13				2.00	2.27	14.67
	Consultant 6	1.67	4.13				0.87		0.40		2.00	6.00	15.07



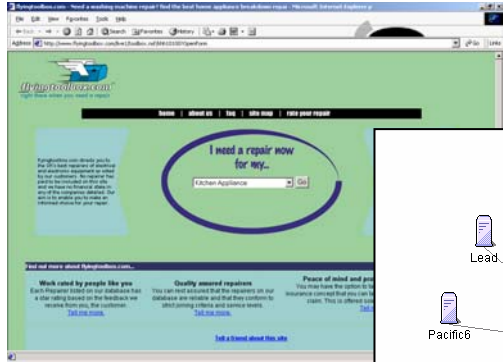
Infrastructure

.domino

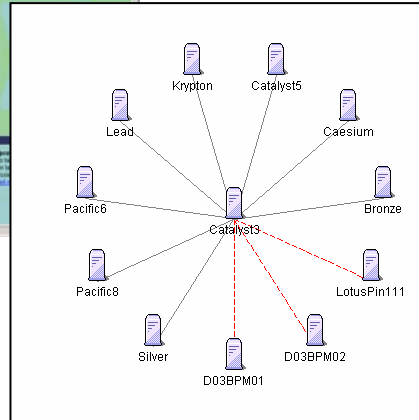


- iSeries in Head Office for flexibility, resilience, reliability, scalability, manageability and DB2 integration
- Distributed xSeries servers in branch offices
- Vast majority of employees use local replicas

What do we do for our customers?



Domino.Doc



- Custom development
- Web solutions
- Integrated solutions
- Rollouts
- Training
- Migration
 - Exchange
 - Groupwise
 - OfficeVision/400
 - NT to iSeries
- Consolidation
- Document management
- Fax solutions
- Problem solving

