

# *Summary*

## Summary

- V5R2 extends IBM's Autonomic Computing goals to deliver additional self-managing tasks and systems automation
  - ▶ Self-configuring wizards for all complex operational tasks
  - ▶ Self-protecting security
  - ▶ Self-healing monitors activated on thresholds
  - ▶ Self-optimizing database, storage virtualization, quality of service and work management
- iSeries Navigator continues to ease management of iSeries through automation
  - ▶ Single system environment
  - ▶ Multiple iSeries servers
  - ▶ Consolidated environments, including WebSphere, Linux, Windows integration, Lotus Domino, and printing



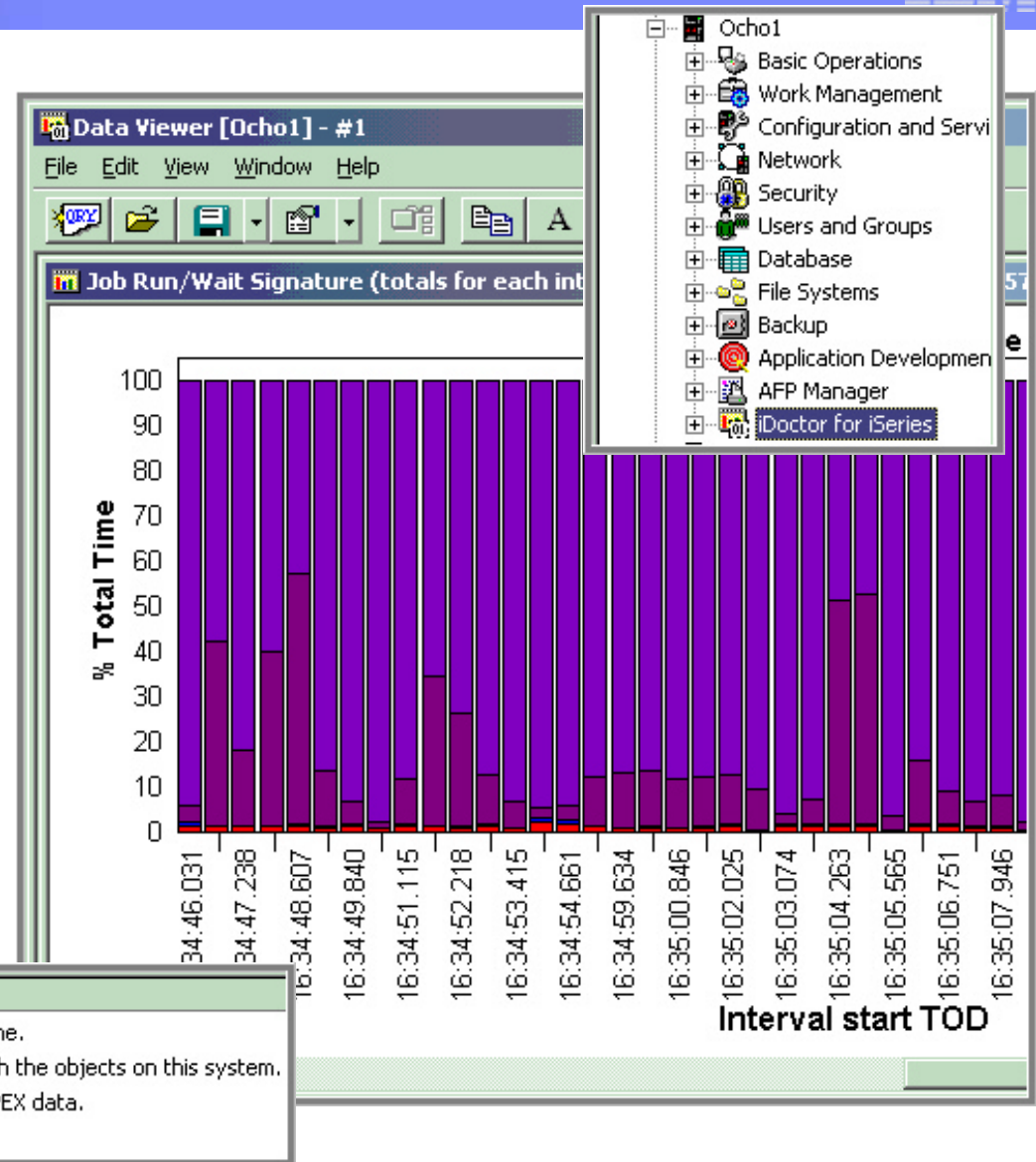
<http://www.ibm.com/eserver/series/navigator>

# *Resources, Tools, Services*



# iDoctor for iSeries

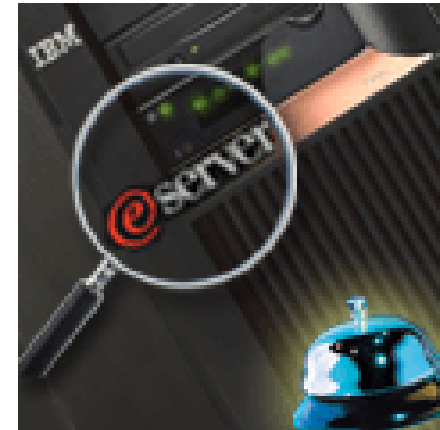
- Graphical Service Tool for detailed performance analysis
  - ▶ Job Watcher to monitor job activity in real-time
  - ▶ Object Explorer
  - ▶ Performance Explorer for analyzing system or application performance
- Ideal for Java and WebSphere workloads
- Performance Analysis Class
  - ▶ AS033



[http://www-912.ibm.com/i\\_dir/idoctor.nsf](http://www-912.ibm.com/i_dir/idoctor.nsf)

## IBM Services and Support

- IBM Global Services
- Partner Services
- iSeries Custom Technology Center
- IBM @server iSeries Support
  - ▶ Performance Management (PM/400)
  - ▶ Workload Estimator
  - ▶ Support Center/400



## iSeries Custom Technology Center

- World-class team of experienced IT architects and programmers
  - ▶ Extension of Rochester Development Laboratory
- Jump start new technologies with experienced professionals
  - ▶ WebSphere, WebSphere Commerce, Java, Domino, Web Facing, iConnect, and Linux
- Extend base functions with reusable components
  - ▶ LPAR API Toolkit
  - ▶ RPG CGI Toolset
  - ▶ XML Parser APIs
  - ▶ DDS to Java, Web Enablement Framework
  - ▶ File Re-Org While Active
  - ▶ Retail Application Interface Suite
  - ▶ Several TCP/IP utilities for secure sockets and FTP

<http://www.ibm.com/servers/eserver/series/service/ctc/>

## Reference Material

- Web Sites
  - ▶ <http://www-1.ibm.com/servers/eserver/series/sftsol/MgmtCentral.htm>
  - ▶ <http://www-1.ibm.com/servers/eserver/series/service/brms/>
  - ▶ <http://www-3.ibm.com/software/data/ondemand/400/index.html>
  - ▶ <http://www.tivoli.com/products/index/storage-mgr/>
  - ▶ <http://www-1.ibm.com/servers/eserver/series/access/>
  - ▶ <http://www-1.ibm.com/servers/eserver/series/navigator/index.htm>
- Presentations
  - ▶ System Sales for iSeries V5R2

© IBM Corporation 1994-2002. All rights reserved.

References in this document to IBM products or services do not imply that IBM intends to make them available in every country.

The following terms are trademarks or registered trademarks of International Business Machines Corporation in the United States, other countries, or both:

400	BRMS	Host Integration Series	JustMail	Payment Manager	Stylized <sup>®</sup>
ADSTAR	Client Series	Host on Demand	MQSeries	Payment Server	SystemView
Advanced Function Printing	ClusterProven	Host Publisher	MQSeries Integrator	PCOM	VisualAge for Java
AFP	CODE/400	HTTP Server for AS/400	Net.Commerce	PowerPC	VisualAge for RPG
AIX	DataGuide	IBM	Net.Data	PowerPC AS	WebSphere
AnyNet	DB2	IBM Logo	Netfinity	Print Service Facility	WebSphere Advanced Edition
Application Development	DB2 Extenders	IBM Network Station	NetView	pSeries	WebSphere Commerce Suite
APPN	DB2 UDB for AS/400	Information Warehouse	NUMA-Q	PSF	WebSphere Development Tools for AS/400
AS/400	DB2 Universal	Integrated Language Environment	OfficeVision	S/390	WebSphere Standard Edition
AS/400e	e-business logo	Intelligent Printer Data Stream	OS/2	SanFrancisco	Workpad
AT	e(logo) Server	IPDS	Operating System/400	Screen Publisher	xSeries
BrioQuery	Enterprise Storage Server	iSeries	OS/400	SmoothStart	

cc:Mail, Domino.Doc, Freelance, LearningSpace, Lotus, Lotus Domino, Lotus Notes, iNotes, QuickPlace, Sametime, and Word Pro are trademarks of Lotus Development Corporation in the United States, other countries, or both.

Tivoli and NetView are trademarks of Tivoli Systems Inc. in the United States, other countries, or both.

C-bus is a trademark of Corollary, Inc. in the United States, other countries, or both.

Java and all Java-based trademarks and logos are trademarks or registered trademarks of Sun Microsystems, Inc. in the United States, other countries, or both.

Microsoft, Windows, Windows NT, and the Windows logo are trademarks of Microsoft Corporation in the United States, other countries, or both.

PC Direct is a trademark of Ziff Communications Company in the United States, other countries, or both and is used by IBM Corporation under license.

ActionMedia, LANDesk, MMX, Pentium and ProShare are trademarks of Intel Corporation in the United States, other countries, or both.

IBM's VisualAge products and services are not associated with or sponsored by Visual Edge Software, Ltd.

Linux is a registered trademark of Linus Torvalds.

UNIX is a registered trademark of The Open Group in the United States and other countries.

SET and the SET Logo are trademarks owned by SET Secure Electronic Transaction LLC.

Other company, product and service names may be trademarks or service marks of others.

Information is provided "AS IS" without warranty of any kind.

All customer examples described are presented as illustrations of how those customers have used IBM products and the results they may have achieved. Actual environmental costs and performance characteristics may vary by customer.

Information in this presentation concerning non-IBM products was obtained from a supplier of these products, published announcement material, or other publicly available sources and does not constitute an endorsement of such products by IBM. Sources for non-IBM list prices and performance numbers are taken from publicly available information, including vendor announcements and vendor worldwide homepages. IBM has not tested these products and cannot confirm the accuracy of performance, capability, or any other claims related to non-IBM products. Questions on the capability of non-IBM products should be addressed to the supplier of those products.

All statements regarding IBM future direction and intent are subject to change or withdrawal without notice, and represent goals and objectives only. Contact your local IBM office or IBM authorized reseller for the full text of the specific Statement of Direction.

Some information in this presentation addresses anticipated future capabilities. Such information is not intended as a definitive statement of a commitment to specific levels of performance, function or delivery schedules with respect to any future products. Such commitments are only made in IBM product announcements. The information is presented here to communicate IBM's current investment and development activities as a good faith effort to help with our customers' future planning.

Performance is based on measurements and projections using standard IBM benchmarks in a controlled environment. The actual throughput or performance that any user will experience will vary depending upon considerations such as the amount of multiprogramming in the user's job stream, the I/O configuration, the storage configuration, and the workload processed. Therefore, no assurance can be given that an individual user will achieve throughput or performance improvements equivalent to the ratios stated here.

Photographs shown are of engineering prototypes. Changes may be incorporated in production models.



## *Additional / Backup Information*

## System and Job Management

- Easy, customizable System Status and Output Queues
- Building on V5R1 support for active jobs, job queues, subsystems
- Direct access to jobs and run time attributes
- Integrated tools to convert spooled files to PDF files
- Enabled through Infoprint® Server

The screenshot displays the IBM Work Management console. The top pane shows a tree view of system components, with 'System Status' selected. The bottom pane shows a table of spooled files with a context menu open over one of the rows.

Output na...	User-specifi...	User	Status	Pag...	Time C...	Date Cre
Qp...		QSECOFR	Ready	2	11:17:43	03/20/0
Qp...		QSECOFR	Ready	2	11:18:22	03/20/0
Qp...		QUSER	Ready	8	11:28:16	03/20/0
Qs...		QSECOFR	Ready	1	12:22:20	03/20/0
Pt...		QSECOFR	Ready	3	14:01:17	03/20/0
Pt...		QSECOFR	Ready	3	14:46:51	03/20/0
Tc...		QSECOFR	Ready	3	14:59:26	03/21/0
Tc...		QSECOFR	Ready	3	15:08:32	03/21/0
Qs...		QUSER	Ready	8	15:36:04	03/21/0
Qs...		KMILL	Ready	3	23:23:39	03/21/0
Lv...		AREK	Ready	3	10:56:55	03/22/0
Qp...		QSYS	Still b...	0	19:18:03	03/22/0
Qp...		QSYS	Still b...	0	19:18:03	03/22/0



## Software Management with iSeries Navigator

- Package and distribute
  - ▶ files, folders, software
- Compare and update fixes across network
  - ▶ Based on a model system
  - ▶ Automatic load and apply of fixes
- Self-guided graphical interfaces for automation
- Hardware, software inventory audit and reporting

The screenshot displays the IBM iSeries Navigator interface for software management. The left pane shows a tree view of the 'Management Central (Rchascat)' environment, with 'Product' and 'Fixes Inventory' highlighted. The right pane shows a table of fixes with columns for 'Fix' and 'Status'.

Fix	Status
L056134	Superseded
L056135	Installed permanen...
L056136	Installed permanen...
L056137	Installed
L056138	Superseded
L056140	Installed permanen...
L056141	Installed permanen...
L056142	Superseded
L056143	Installed permanen...
L056146	Superseded
L056147	Installed
L056150	Installed
L056152	Installed permanen...
L056153	Installed permanen...
L056155	Installed permanen...
L056156	Installed permanen...
L056157	Installed permanen...
L056167	Installed permanen...
L056168	Installed permanen...
L056169	Superseded
L056170	Installed permanen...
L056173	Superseded
L056175	Installed permanen...
L056177	Installed permanen...
L056183	Installed
L056197	Installed permanen...
L056198	Installed permanen...
L056201	Superseded

1 - 27 of 263 objects

## iSeries Electronic Output

- InfoPrint Server for iSeries
  - ▶ New PDF and e-mail capabilities
- InfoPrint Designer for iSeries
  - ▶ Enhanced graphical output design
- Electronic output with OS/400
  - ▶ PDF output distribution integrated with iSeries Access
  - ▶ Standard API access to PDF and e-mail functions
  - ▶ Internet Print Protocol (IPP)
- Infoprint 85 and 105 printers
  - ▶ Supported with Print Services Facility for OS/400

