



IBM server™ iSeries™

# iSeries Integrated xSeries Solutions

**George Gaylord**  
**iSeries Product Marketing**

IBM & IBM Business Partner Use Only Until Announced

© 2003 IBM Corporation

# iSeries Windows 2000 Server® Integration

## ■ Solutions

- ▶ Extend OS/400 applications with Windows™
- ▶ Consolidate Windows Servers

## ■ Approach

- ▶ Leverage xSeries hardware
- ▶ Use Standard Windows Server software
- ▶ Add value to Windows servers

## ■ Choice of Offerings

- ▶ Server "under the covers" - Integrated xSeries Server
- ▶ Direct Attach xSeries Server - Integrated xSeries Adapter



## Integrated xSeries Server

- Intel® 1.6 GHz Xeon™ Processor
- Integrated 10/100 Mbps Ethernet Adapter
- Virtual disk resources
- Shares iSeries Tape, DVD, CD-ROM
- iSeries Models 270, 8xx
- Windows Server 2003® and  
Windows 2000 Server® support



*[www.ibm.com/eserver/series/windowsintegration](http://www.ibm.com/eserver/series/windowsintegration)*

## Integrated xSeries Adapter

- **Attaches the latest 2, 4, 8-way xSeries Servers\***
  - ▶ x235, x255, x360, x440
- **Virtual disk resources**
- **Shares iSeries Tape, DVD & CD-ROM**
- **iSeries Models 270, 8xx**
- **Windows Server 2003® and Windows 2000 Server® support**

Enterprise **X**-Architecture™



*[www.ibm.com/eserver/series/windowsintegration](http://www.ibm.com/eserver/series/windowsintegration)*

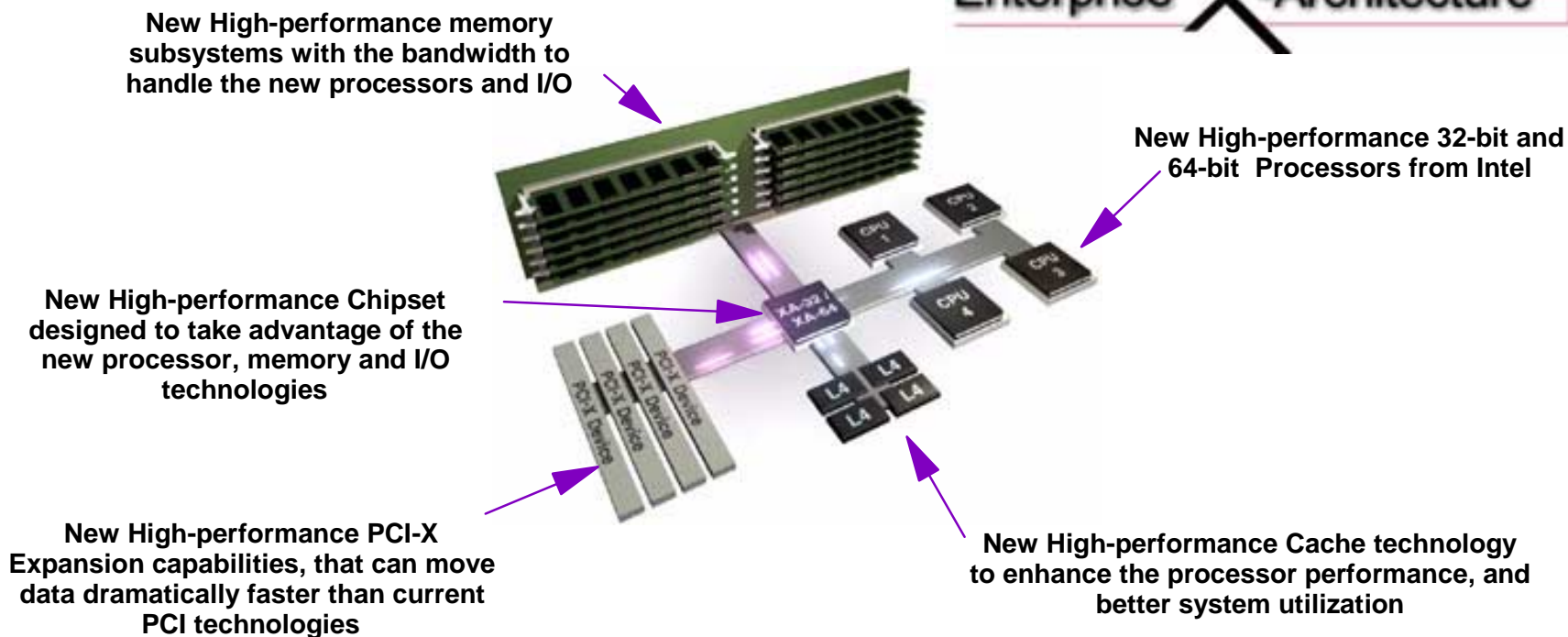
*[www.ibm.com/eserver/xseries](http://www.ibm.com/eserver/xseries)*

\* Selected Open Bay models of x235, x255, x360, and x440

# Matched, High-performance Technologies

**Matching new high-performance 32 and 64-bit processor technology, with new high-performance memory and I/O subsystems.**

Enterprise **X**-Architecture™



***Result: Increased overall performance, system utilization, scalability and availability***

# Increased support for Integrated xSeries Solutions

## Integrated xSeries Server (IXS)

Model	Max IXS	Model	Max IXS
		<b>800</b>	4
<b>270</b>	3	<b>810</b>	13
<b>820</b>	12	<b>825</b>	36
<b>830</b>	28	<b>870</b>	48
<b>840</b>	32	<b>890</b>	48



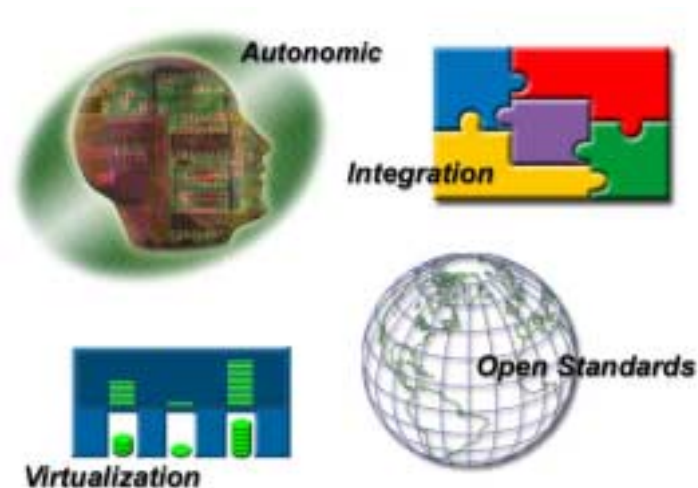
## Integrated xSeries Adapter (IXA)

Model	Max IXA	Model	Max IXA
		<b>800</b>	3
<b>270</b>	2	<b>810</b>	7
<b>820</b>	8	<b>825</b>	18
<b>830</b>	16	<b>870</b>	60
<b>840</b>	32	<b>890</b>	60



# iSeries Integrated xSeries Solutions - on demand

- **Open Standards**
  - ▶ iSeries support of published and "de facto" industry standards
- **Virtualization**
  - ▶ Dynamic Virtual Storage
  - ▶ Virtual Ethernet
- **Integration**
  - ▶ Windows and OS/400 Applications
  - ▶ Server Management
  - ▶ Backup
- **Autonomic Computing**
  - ▶ Enterprise X Architecture
  - ▶ iSeries Single Level Storage
  - ▶ IBM Director



# Server Management

## Problem

- ▶ Multiple interfaces and resources to monitor server infrastructure

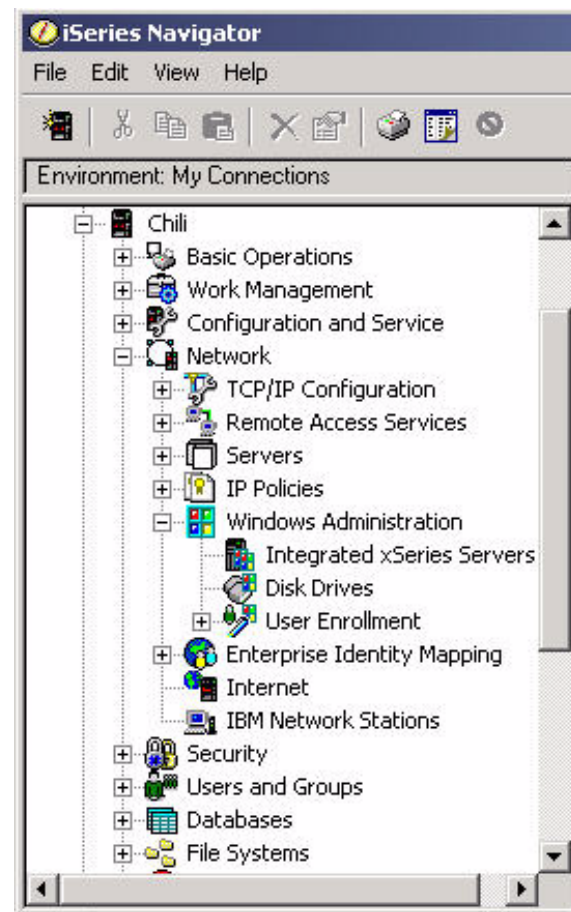
## iSeries Solution

- ▶ Leverage iSeries operations and resources to monitor and manage integrated xSeries servers
- ▶ iSeries Navigator is enabled for Wireless, PDA & Web Browser

## Benefit

- ▶ Can reduce server operations through integrated server management

[www.ibm.com/eserver/series/navigator](http://www.ibm.com/eserver/series/navigator)





# User Administration

## Problem

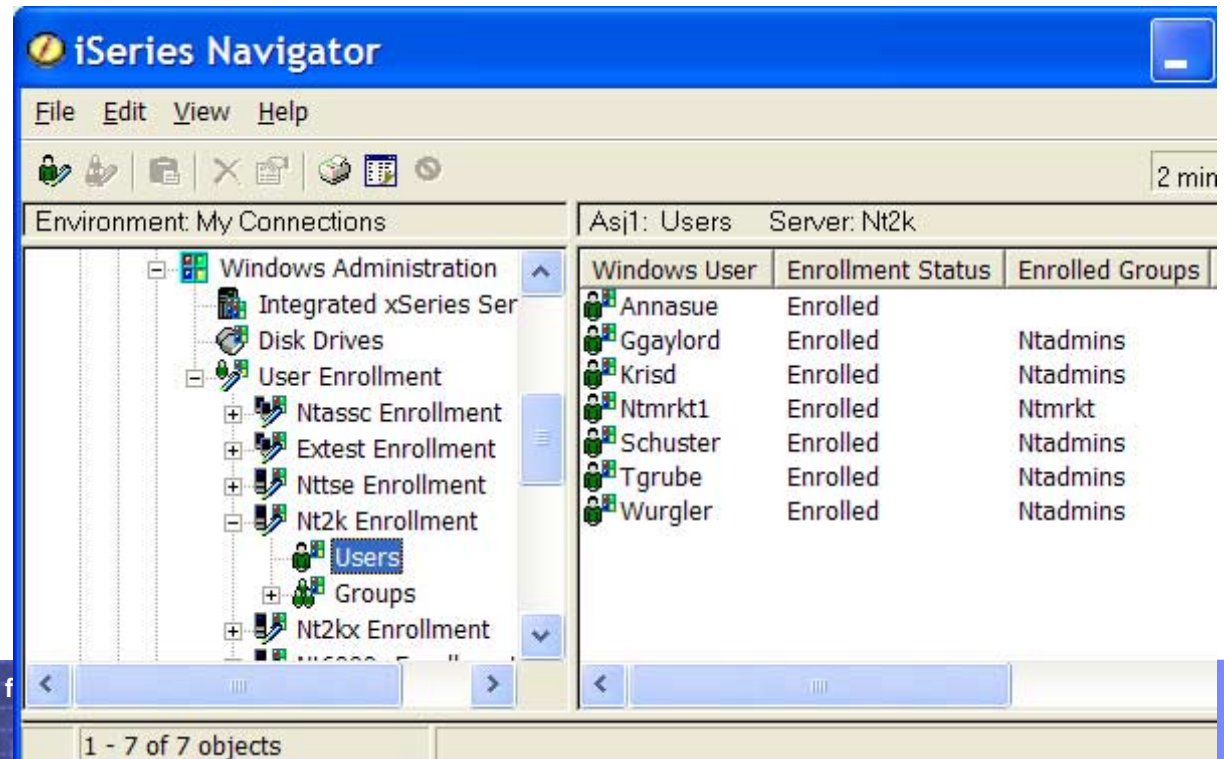
- ▶ Multiple system user management

## iSeries Solution

- ▶ Adding OS/400 Users and Groups to Windows 2000 Server Domains and Synchronizing Passwords

## Benefit

- ▶ Can reduce costs with integrated user management



## E.D. Smith & Sons, Ltd.

- **Background:** E.D. Smith & Sons is a leading manufacturer of quality jams and food products located in Winona, Ontario
- **Objective:** Address scalability and responsiveness demands by giving employees Web-based access to critical business applications while controlling system complexity, administrative requirements and cost
- **Solution:** An IBM eServer iSeries 820 leveraging LPAR to deliver ERP, Lotus Domino & Business Intelligence applications and an xSeries 440 attached to an iSeries via the Integrated xSeries Adapter.



■ **Why IBM?:** “The best investment was to bring user administration back where it belonged—under the guidance of the iSeries. I wanted everything centralized, which would make it much less resource-intensive to manage, and I wanted the iSeries to be in control of all the security and to handle all the backups.”

-- Beverly Russell, IT Director, E.D. Smith & Sons, Ltd.

# Virtual Networking

## Problem

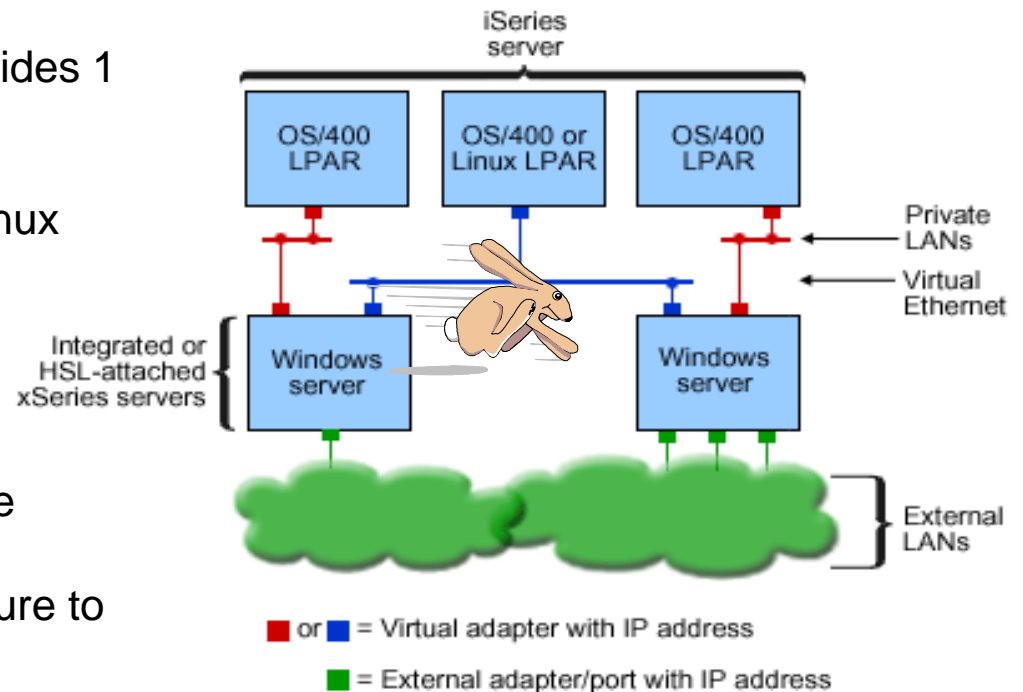
- ▶ Upgrading network infrastructure to support high-speed application communication is expensive in terms of time, resources and equipment

## iSeries Solution

- ▶ Virtual Ethernet at OS/400 V5R2 provides 1 Gb Connections with no LAN Adapters/Switches
- ▶ Windows to Windows to OS/400 to Linux
- ▶ Up to 5 Connections per IXS / IXA

## Benefit

- ▶ Extremely secure and reliable server communication over high-performance connections
- ▶ Can reduce network traffic and exposure to "sniffing"



RZAHQ016-3

# Virtual Storage

## Problem

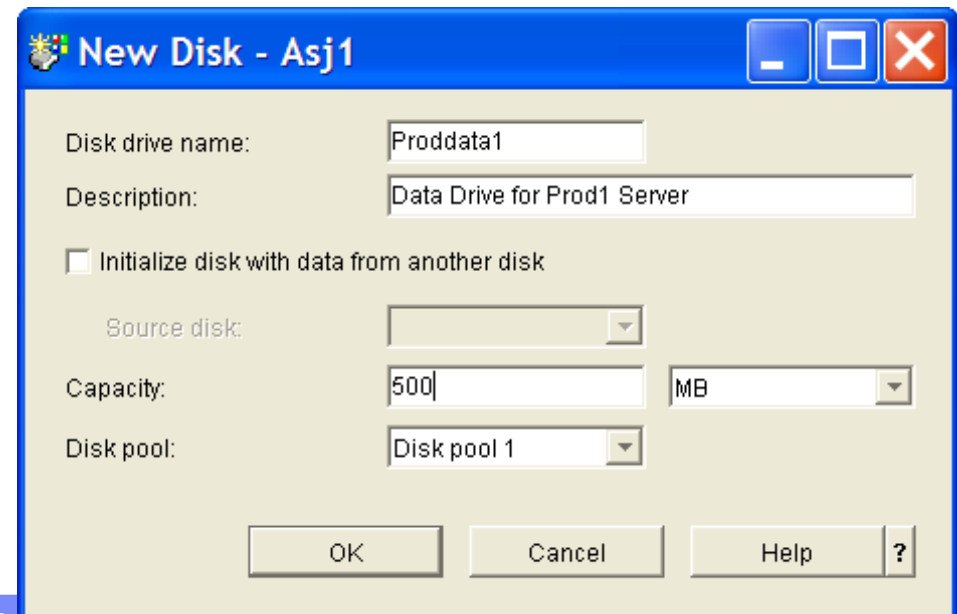
- ▶ Storage management across the server farm

## iSeries Solution

- ▶ Flexible Virtual Disks from 1 MB to 64 GB.
- ▶ Up to 2 TB per Windows server
- ▶ Hot add of iSeries Storage Space to Windows 2000 Server

## Benefit

- ▶ Can reduce costs with flexible, centralized storage management



**New Disk - Asj1**

Disk drive name: Proddata1

Description: Data Drive for Prod1 Server

Initialize disk with data from another disk

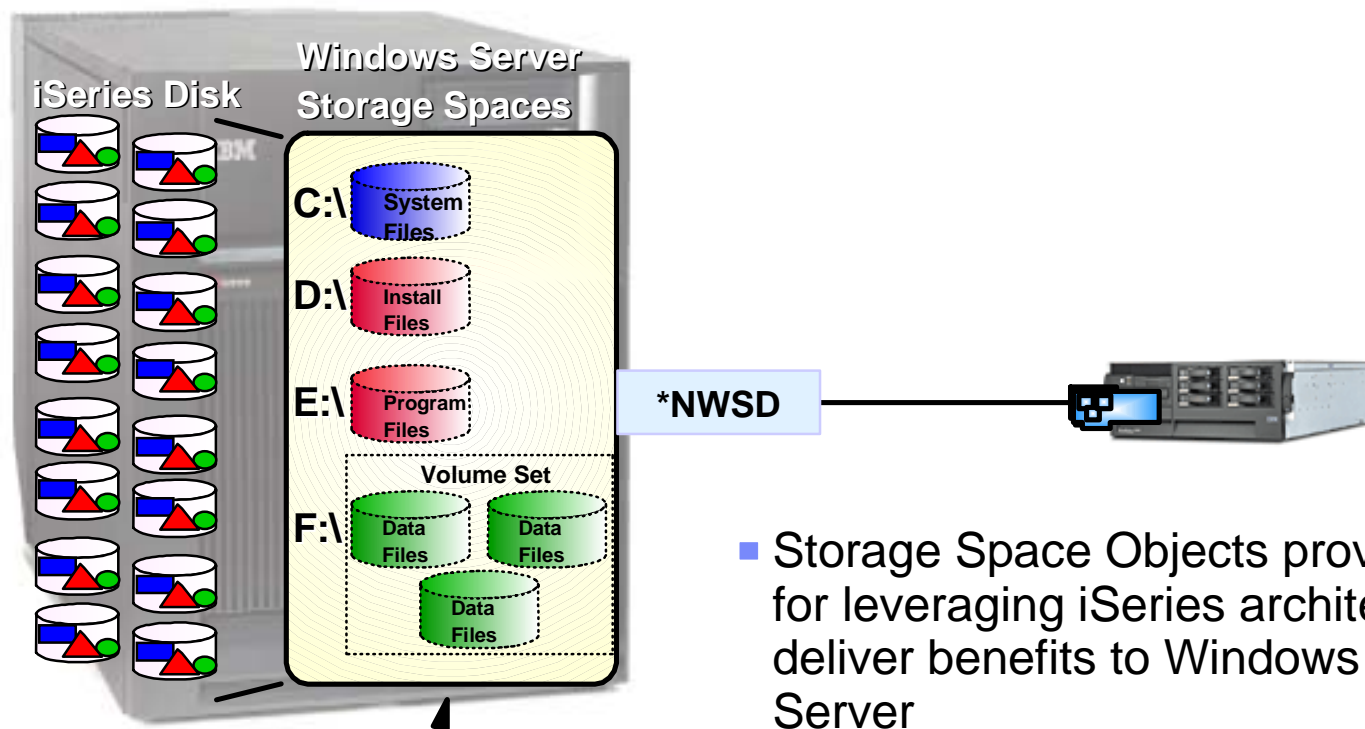
Source disk: [Dropdown]

Capacity: 500 MB

Disk pool: Disk pool 1

OK Cancel Help ?

# iSeries Storage Virtualization for Windows 2000 Server



**Add disk storage to a Windows 2000 Server dynamically**

- Storage Space Objects provide basis for leveraging iSeries architecture to deliver benefits to Windows 2000 Server
  - ▶ Performance
  - ▶ Consolidated Backup
  - ▶ Hot Spare
  - ▶ Testing

# Integrated Backup

## Problem

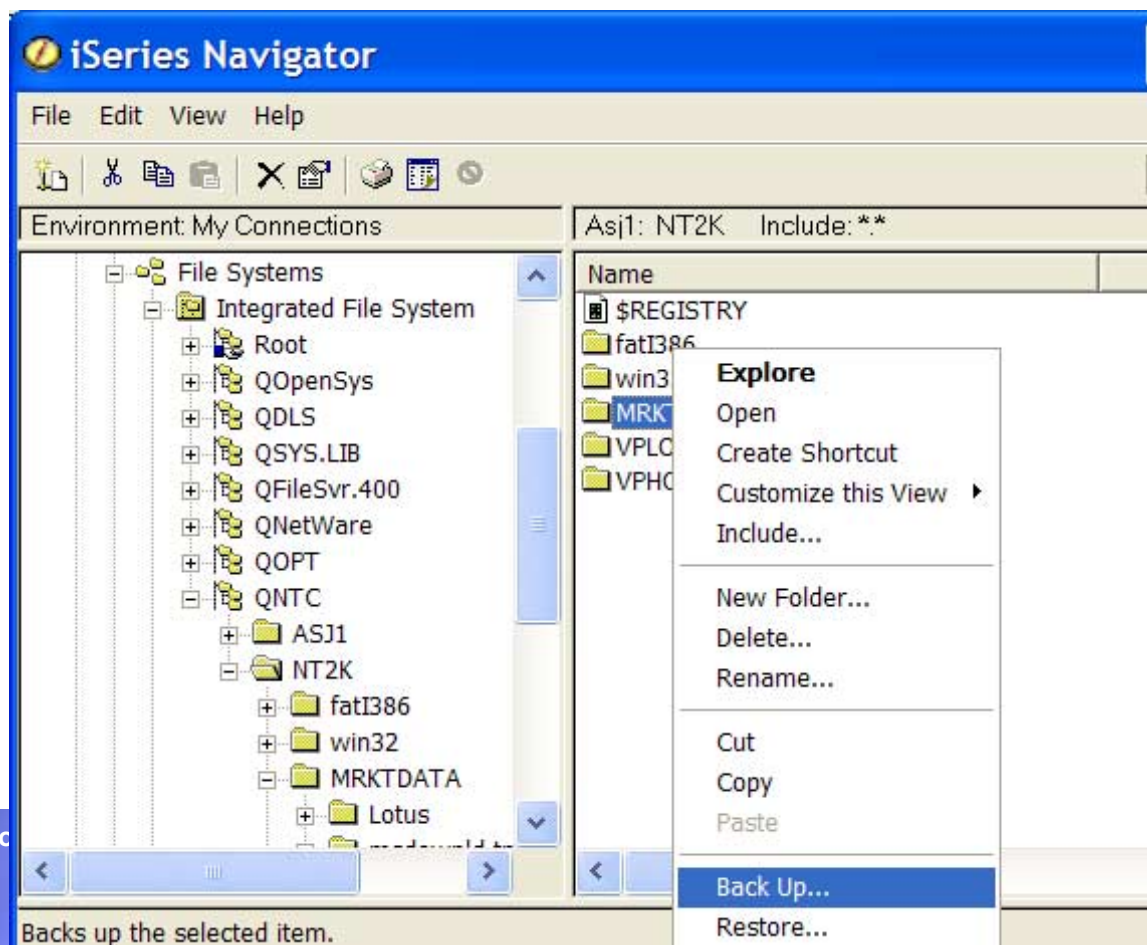
- ▶ Managing and automating heterogeneous backups

## iSeries Solution

- ▶ Save OS/400 and Windows storage spaces to iSeries tape drives

## Benefit

- ▶ Can reduce costs by leveraging iSeries resources and skills



# Testing

## Problem

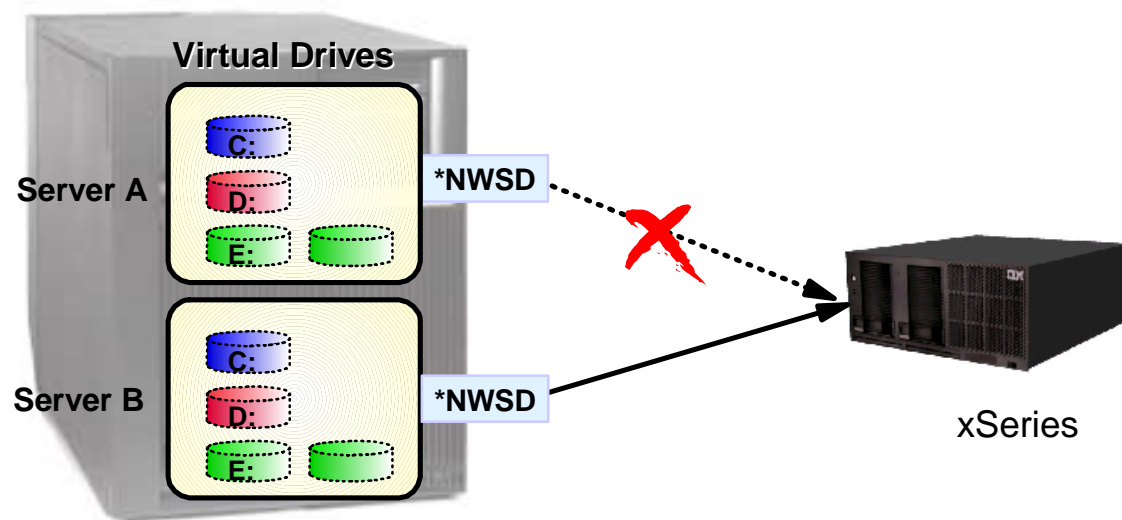
- ▶ Adequately testing Microsoft Service Packs, Application Fixes, device drivers before they are placed in production

## iSeries Solution

- ▶ Logical Servers allows testing with an exact copy of the production image and hardware
- ▶ One test server can support multiple similar production environments

## Benefit

- ▶ Can reduce the outages caused by change



# Availability

## Problem

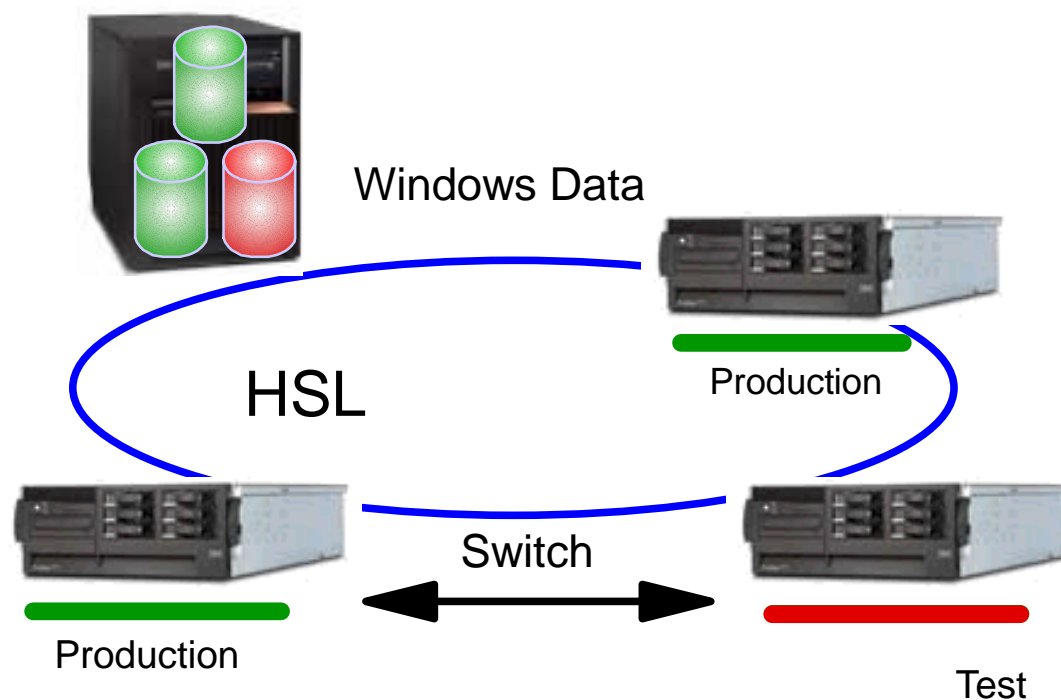
- ▶ Providing an effective and efficient availability solution

## iSeries Solution

- ▶ Hot Spare allows one xSeries server to provide a backup to several production servers

## Benefit

- ▶ Efficient availability solution for planned or unplanned server outages





# Huhtamaki

**Background:** Huhtamaki, in DeSoto, Kansas, manufactures packaging such as molded cartons, paperboard trays and plastic containers for leading food service and consumer brands such as Chinet brand disposable paper plates.

**Objective:** Determine end of lease strategy, consolidate proliferation of Compaq servers, control system complexity, physical space consumption and cost

**Solution:** An integrated IBM eServer iSeries and xSeries infrastructure that enhanced reliability, is easy to manage, and reduced backup time by up to 75 percent



[www.huhtamaki.com](http://www.huhtamaki.com)

*“Before consolidating on the iSeries and xSeries we required at least three dedicated administrators to run our servers...now because of its ease of use, we need only two administrators to run the new system.”*

-- Brendan Carlton,  
Systems Administrator

See Brendan at : [www.ibm.com/servers/library/testimonial.html](http://www.ibm.com/servers/library/testimonial.html)

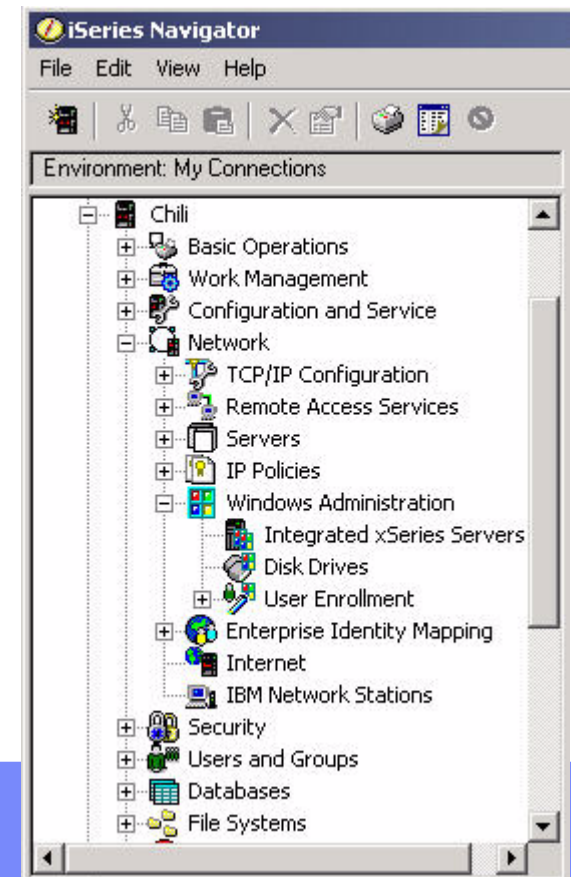
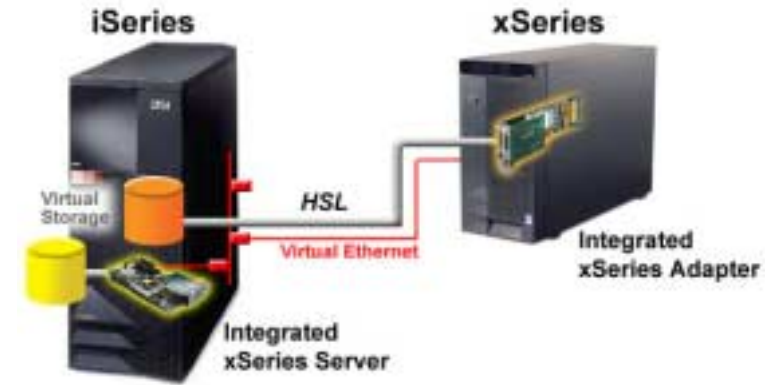
# Amelia Island Plantation

- **Background:** Amelia Island Plantation is Florida's premier AAA-Four Diamond destination island resort overlooking the blue water of the Atlantic
- **Objective:** Deploy new Windows server application requirements, replace aging Intel Server hardware, and introduce reliability to support 24X7 environment
- **Solution:** Consolidated 17 Intel servers to an iSeries Model 820 running JD Edwards, 6 Integrated xSeries Servers and 4 xSeries servers attached to iSeries via Integrated xSeries Adapters
- **Why IBM?:** "Under the new system, everything is simpler. Administration is much easier compared to standalone servers."  
-- Andy Cook, Windows Systems Administrator

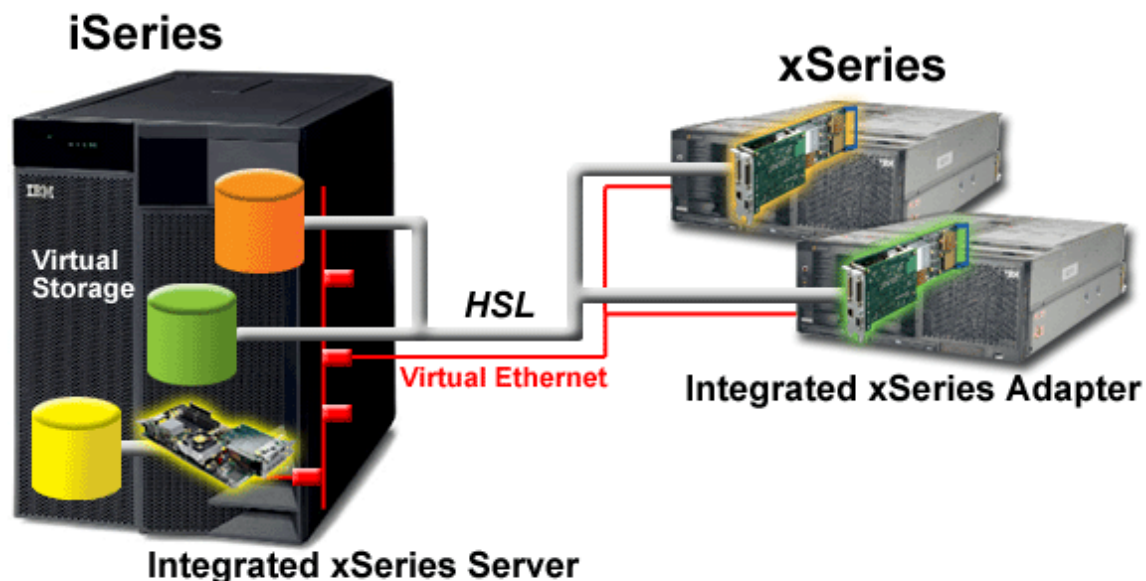


# iSeries Integration Advantages

- **Server Management**
  - ▶ Integrated management of iSeries and xSeries
- **Virtual Ethernet**
  - ▶ Communicate more securely over 1 Gbps Virtual Ethernet connections
- **User Administration**
  - ▶ OS/400 Users, Groups, Passwords Synchronized with Windows
- **Dynamic Virtual Storage**
  - ▶ Up to 2 TB per Windows server
- **Integrated Backups**
  - ▶ Consolidate OS/400 and Windows backup operations
- **Testing**
  - ▶ Logical Servers allow testing with the production image and hardware
- **Hot Spare**
  - ▶ Easily switch production environment to another server



# iSeries Windows Integration Summary



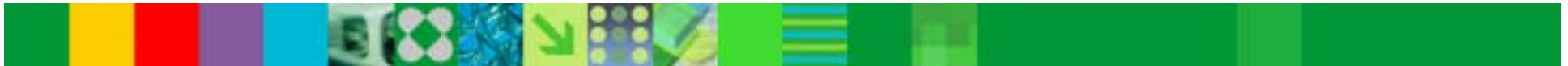
- Integrate server management and user administration
- Leverage investment in iSeries resources and operations
- Simplify server test and deployment using Virtual Storage Spaces
- Communicate securely over 1 Gbps Virtual Ethernet connections



IBM Software Group

# IBM DB2 CommonStore for Lotus Domino Lotus Domino E-mail and Document Archiving

**DB2** Information Management Software



@business on demand software

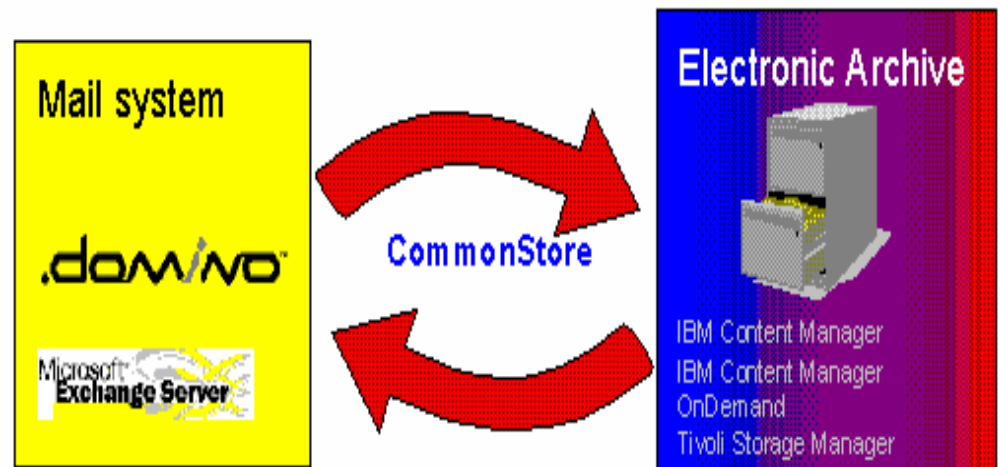
# Managing the Growth of Lotus Domino System

- Mailbox Growth..
  - ▶ Mail box is used for managing business information (customer folder, project folder, ...) as well as communication..
  - ▶ Mixture of important business data, informal communication, even private mails
  - ▶ Retention policy is required.
    - Average mail box size: 120 MB
    - Annual growth: 45 MB
    - Average number of e-mails that are kept: 10 daily per user (going up)
    - Average mail size: 50 KB (growing)
- Growth of Lotus Domino Application Databases in number and size..
- Domino.Doc database growth
- **There is no end to growth!**



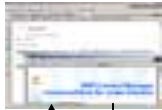
## Relief for your Lotus Domino system with CommonStore

- Efficient and automatic offload
  - ▶ Moves data from personal mail boxes, application databases in expensive production environment to inexpensive storage environment (electronic archive)
  - ▶ Usually without meta data
  - ▶ Usually without format conversion
  
- Storage in electronic archive system (repository)
  - ▶ Significant compression
  - ▶ Storage on tape
  
- Retrieval through the messaging client
  - ▶ Easy
  - ▶ Fully integrated
  - ▶ No education needed

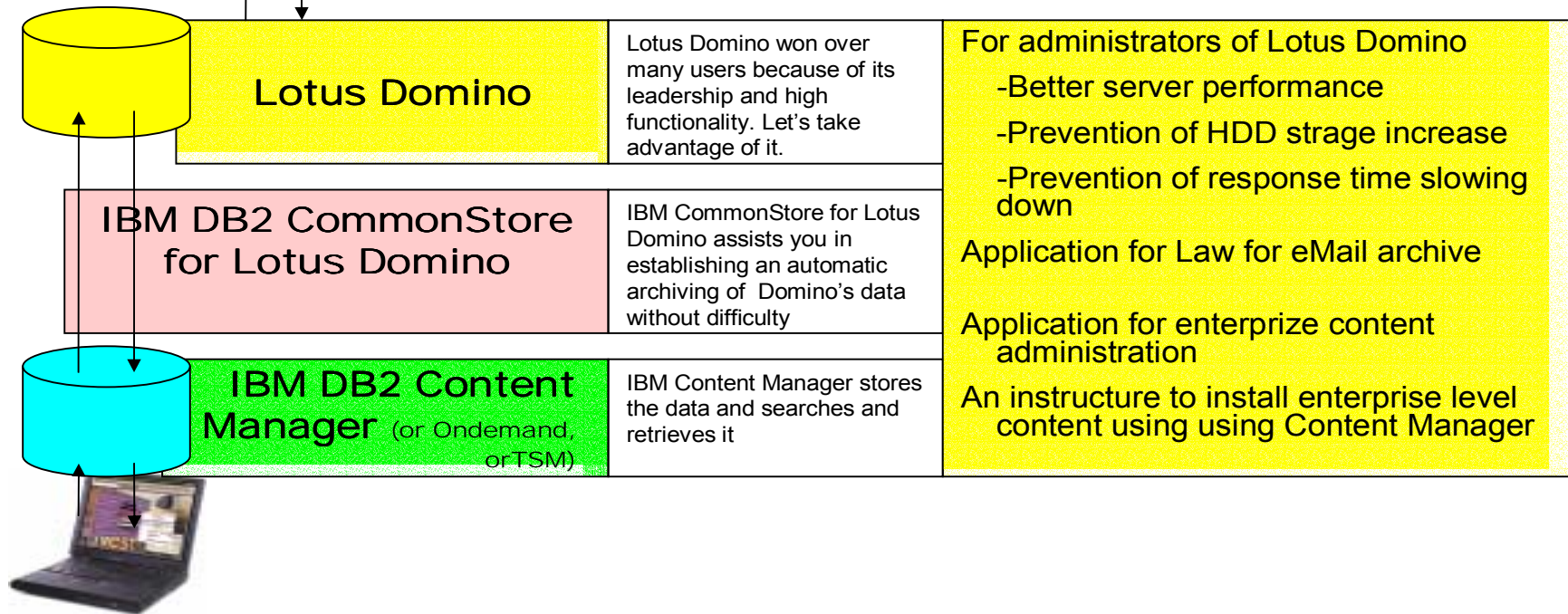


**To those who use Lotus Domino**  
**We would like to propose how you can leverage your current investment**

- Easy to install mail archiving system: mail and attachments are getting bigger every year
- Reduce servers workload/ system cost/ managing cost
- Utilize storage efficiently
- Maintain Lotus Domino high performance



**Why don't you use CommonStore for Lotus Domino to make Lotus Domino's functions more effective and simple?**





# Easy retrieval with Lotus Notes

The screenshot displays the Lotus Notes Mail interface. On the left is a navigation pane with folders like Inbox, Drafts, and Sent. The main area shows a list of messages with columns for Who, Date, Size, and Subject. A yellow box with the number '2' highlights the 'Re: SAP Forum' message. Below the list, an email is open, showing the sender 'Tim Robertson@IBMGB' and the subject 'Our logo for the Content Manag...'. A yellow box with the number '3' highlights the signature block. A yellow box with the number '4' highlights a URL in the email body: <http://localhost:8085/?sGet&DI1eTH1WXw19CRNVAIF5XBj6>. A yellow box with the number '1' highlights the 'Archived Notes' section in the message list.

Who	Date	Size	Subject
<b>Urgent</b>			
Bruno Philippson	29.02.2000	2.009	Re: SAP Forum
<b>Normal</b>			
Catherine Meador	10.03.2000	169.772	Re: IBM/Nestle Osterreich GmbH Success Story - OnDemand
Christof Mayer	08.05.2000	353.759	DocBridge Rasterizer for CommonStore for Lotus Domino
Bruce H Ackley	13.12.2000	192.197	Re: SAP Certification
Germany COMMONSTORE	23.02.2001		
Dennis Dorman	26.02.2001		
<b>Archived Notes</b>			
Rudolf Naschenweng	08.08.2000		
Wolfgang Gogg	01.02.2001		
Tim Robertson	07.03.2001		

CommonStore

From: Tim Robertson@IBMGB To: ...  
Subject: Our logo for the Content Manag... cc: ...  
Hi send you the latest logo of our CSM product

**<<< Attachment 'cmlogo.gif' has been removed >>>**

Kind regards

Tim Robertson  
Worldwide Sales Supp. Manager  
Content Management, EMEA  
IBM Software Group  
Tele: (+44)-208-681 4457 (Int: 34-4457) Fax: ...  
Cell: (+44)-(0)-802-766-064



## E-mail archiving today

- It's relatively new (about 2-3 years).
- More and more companies do it.
- Analysts start writing about it.
- Many different forms and interpretations of one common base.
- It moves from a “point” solution to become an integral piece of enterprise content management (ECM)



## What drives e-mail archiving today?



- Growth of the messaging system
  - ▶ More users
  - ▶ Larger mail boxes
  - ▶ More expensive operation
- Requirement
  - ▶ Reduce the growth of the messaging system
  - ▶ Offload old e-mails from production messaging system
  - ▶ Keep old e-mails in near on-line access



- Legal requirements or industry regulations
  - ▶ All e-mails of a certain user group have to be captured and retained for a certain number of years
  - ▶ Example: Securities Exchange Commission (SEC), regulations for broker and dealers
- Requirement
  - ▶ E-mails treated as business records
  - ▶ Provide e-mails on demand during audit or investigation



## Rule-based, automatic offload with CommonStore

- Step 1
  - ▶ Finding the mails to offload
  - ▶ Going through thousands of mails
  - ▶ Typical criteria for rules
  - ▶ Document age (modification date, access date)
  - ▶ Document size
  - ▶ Mail box size
  - ▶ Can be also customer specific
- Step 2
  - ▶ Offloading through CommonStore for Lotus Domino
  - ▶ Usually timeslot after business hours
  - ▶ Example: 7 PM - 11 PM
- **Very high archiving throughput**
  - ▶ Largest installation with 200.000+ mails per day!
- **Very powerful and fast policy engine**



## Archiving options

- Attachment archiving



- ▶ Mail body remains within Domino
- ▶ Significant offload

- Stub archiving



- ▶ Entire document
- ▶ Leaves the mail header ("stub") in Domino as a placeholder

- Removing the entire document

- ▶ Requires entering a search later

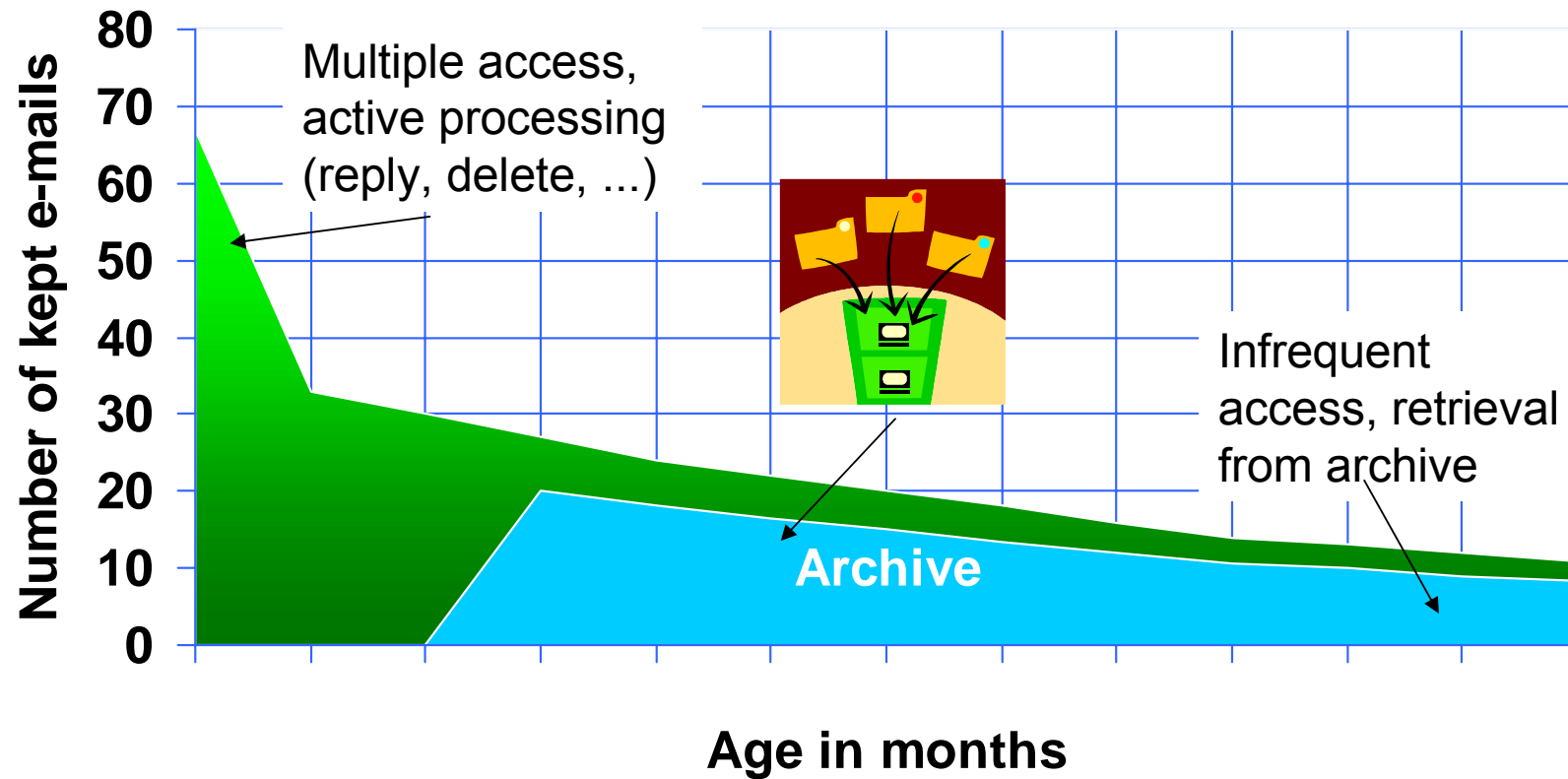
- Archiving by user

- ▶ User selects one or more documents
- ▶ User interaction

- Archive repository

- ▶ Choice of server platform
- ▶ Windows, AIX, Sun, HP-UX, iSeries, zOS (/390)

## Small mail box for operation, large for user!



*Archiving policy (rule): all attachments older than 90 days*



## Benefits



- Server backup
  - ▶ Less time needed
  - ▶ Enough time for other maintenance task
- Network
  - ▶ Less load due to data reduction
  - ▶ Avoids investing in additional bandwidth
- Workstations
  - ▶ No local archives
  - ▶ Data security and maintenance
- Operational costs
  - ▶ Better manageable
- High availability and disaster recovery
  - ▶ Becomes simpler and less expensive
- Performance
  - ▶ System remains performant without additional investment
- Server environment
  - ▶ Less new disks
  - ▶ Less new CPUs
- User satisfaction
  - ▶ Easy access, good performance
  - ▶ Less worries about mail box size/quota

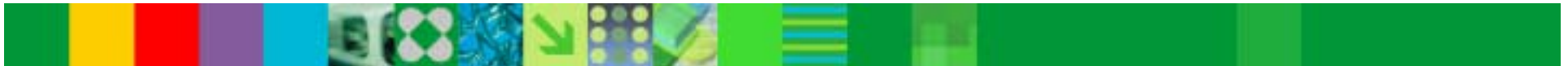




IBM Software Group

# E-mail archiving to meet legal/regulatory requirements (journal mail archiving)

**DB2** Information Management Software



@business on demand software



## Recent news



**“Wall Street Firms Fined for not preserving e-mail”**



**“Wall Street Firms Said to Break Email Rule”**



**“States Prepare Investigation of ...”**



**“... Cooked Books Back in 2000...”**

**“Energy Trader Admits Faking Transactions”**



**“Seeking...Technology to Archive Emails and IMs.”**



## Regulatory compliance in the financial industry

**Regulatory organizations have imposed stringent records retention requirements involving the secure, long-term archival and retrieval of information, including audit trails for retrieval and disposition.**



### **SEC Rule 17a-4**

**Digital Archiving  
Requirements**

**Updated 1997**



**NASD**

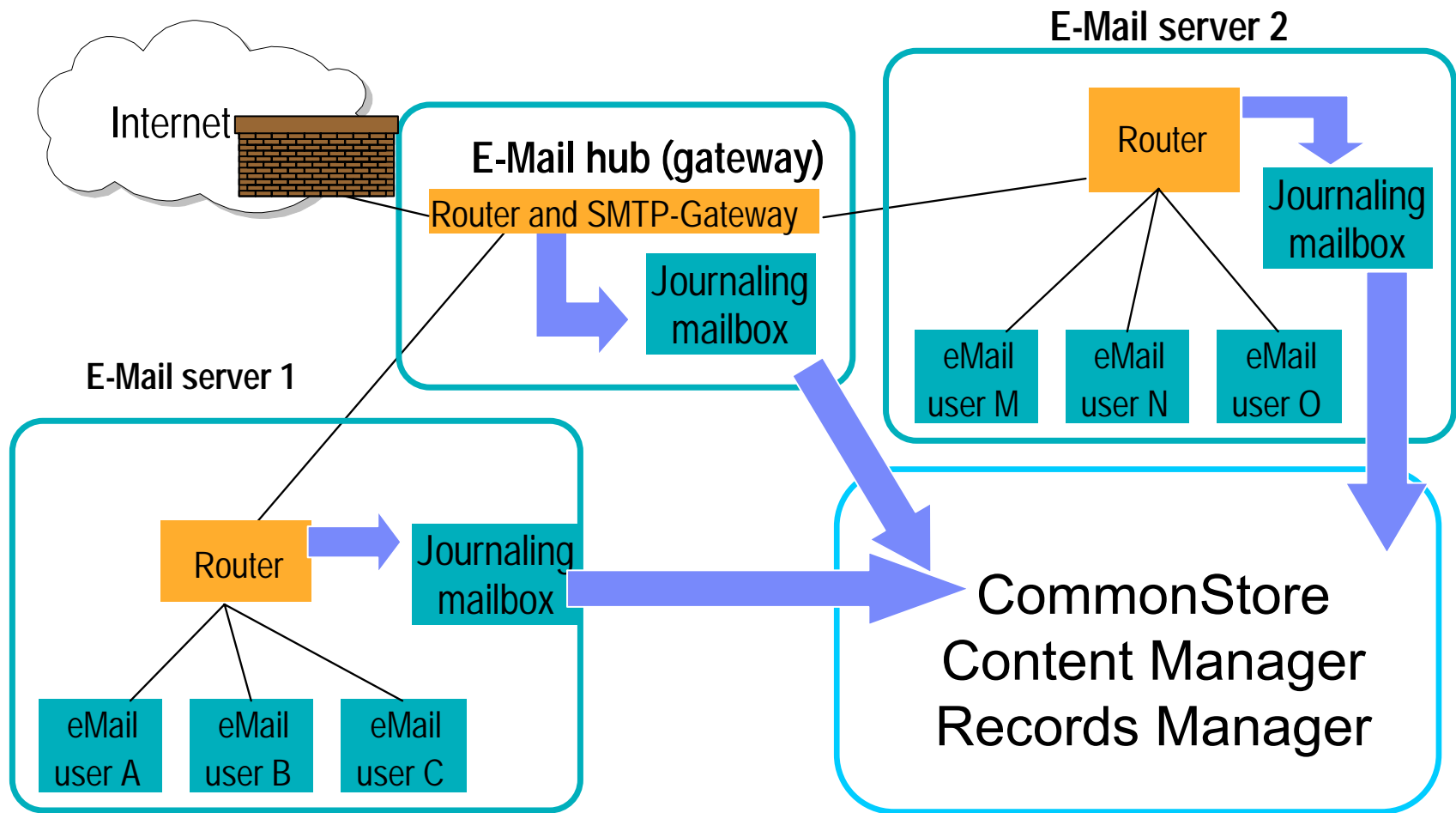
### **NASD Rule 3010 & 3110**

**Supervisory  
Requirements**

**Effective 1999**



# Journal e-mail archiving



## How are SEC / NASD requirements met?

Requirement	Met By
<b>Capture correspondence unmodified</b> [17a-4(f)(3)(v)]	<b>Message journaling for e-mail, transfer of e-mails with CommonStore into IBM Content Manager as archive for e-mail and all other enterprise content</b>
<b>Non-rewritable, non-erasable format</b> [17a-4(f)(2)(ii)(A)]	<b>WORM Optical jukebox or tape (IBM Tivoli Storage Manager on Windows and UNIX, OAM on zOS)</b>
<b>Verify automatically the quality and accuracy of the storage media process</b> [17a-4(f)(2)(ii)(B)]	<b>Logging in CommonStore, Content Manager, IBM Records Manager and Tivoli Storage Manager</b>
<b>Duplicate storage</b> [17a-4(f)(3)(iii)]	<b>Duplicate storage copy pool or two archive servers</b>
<b>Duplicate index</b> [17a-4(f)(3)(iv)(B)]	<b>Mirrored database or two archive servers</b>
<b>Capacity to download indexes and records</b> [17a-4(f)(2)(ii)(D)]	<b>CM Client, e-Client, or Notes DB with Common store for Domino</b>
<b>For ALL internal &amp; external correspondence</b> [17a-4(b)(4)]	<b>Journaling on each router, not just SMTP inbound/outbound router</b>



## Case study



- Insurance company (US)
  - ▶ 50.000 Notes users
  - ▶ Uses CommonStore for SEC compliance since 2000
  - ▶ Reference video on Internet
- Archival
  - ▶ Automatic preprocessing and archival with Notes agent
  - ▶ Index fields: recipient, sender, date, subject
  - ▶ 150.000+ e-mails per day
  - ▶ Currently 150 million mails in archive (approx. 7 TB)
  - ▶ Storage on WORM tape
- Retrieval
  - ▶ Restricted
  - ▶ Authorization process through Domino workflow
  - ▶ Search in archive
  - ▶ All matching documents retrieved to one (separate) Domino database
- Old backup tapes
  - ▶ Back to 1998
  - ▶ Restored them and archived mails with a 2nd CSLD server
- Instant messaging
  - ▶ Have started archiving Sametime chat logs



## E-mails as business records

- Examples of Securities and Exchange Commission and National Association of Securities Dealers mandates
  - ▶ Certain records must be kept for 6 or 3 years respectively
    - Retention of communications
      - Paper documents / hardcopy
      - E- mails
      - Instant messages
      - ...
    - Organizational documents
    - Account record information
    - Special reports
    - Compliance, supervisory and procedure manuals
    - Exception report



# Enterprise content management (ECM)

