



e-business

IBM @serveriSeries

iSeries Developers Road Map



IBM.

Doug Fulmer
 WW Sales Exec,
 e-bus Infrastructure
 iSeries

2337 Hazy Meadows Ln
 Flower Mound, TX 75028

Tel 972-724-0288 (Bus)
 Tel 972-724-1202 (Home)
 Tel 214-507-0859 (Cell)

dfulmer@us.ibm.com

IBM @serveriSeries



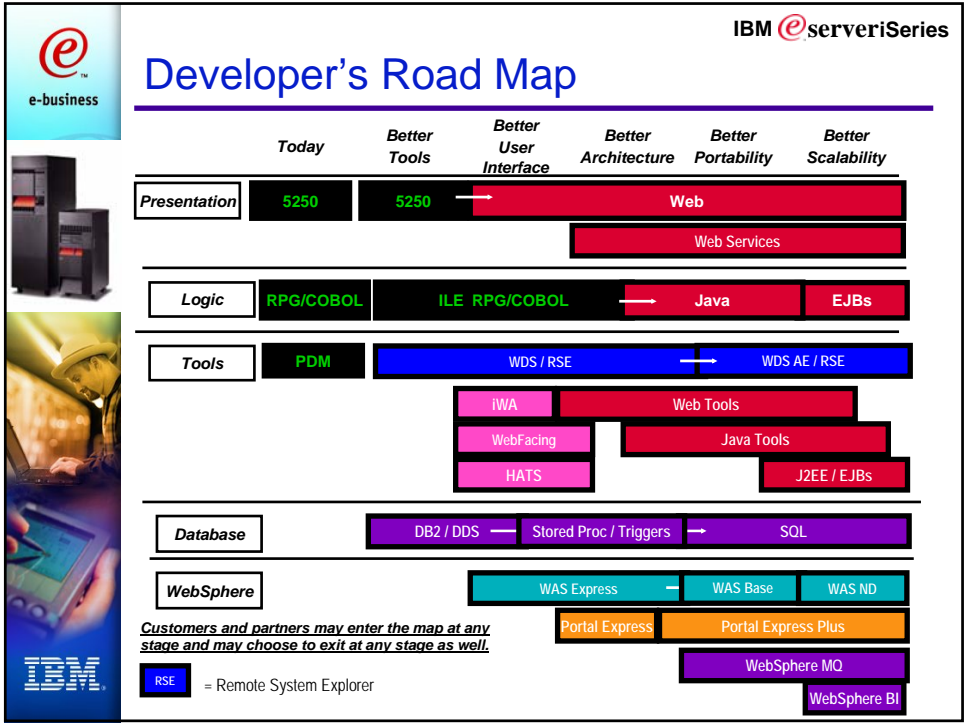
e-business

IBM @serveriSeries

Agenda

- ✓ Prologue
- ✓ Story
- ✓ Epilogue





IBM eServer iSeries

Easiest Way to Get There

United States

Home | Products & services | Support & downloads | My account | Call 1-888-SHOP-IBM

Select a country

Midrange servers

- About iSeries
- Small to Medium Enterprises
- Medium to Large Enterprises

Support

Services

Software

Solutions

Education

Library

Literature

Related links:

- Special offers
- iSeries Nation
- iSeries announcements
- iSeries printing

Midrange servers: iSeries

Take control of IT
Optimize your IT infrastructure with a free consulting offer from IBM
→ Learn more

Featured topics

The IBM eServer iSeries is based on open-standards and built for the on demand world. The iSeries is highly integrated, highly reliable and it runs multiple operating systems and applications simultaneously. Its capacity on demand and workload management capabilities adjusts to the ever-changing needs of your business.

Resources

Related information

- About iSeries Editions
- iSeries Access
- Success Stories
- Capacity on Demand
- Logical partitioning

Hardware

- Servers for small & Medium enterprises
- Servers for medium & large enterprises
- Storage for iSeries

Operating systems

We're here to help
Easy ways to get the answers you need
→ Call me now
→ Request a quote

Legends of iSeries

VANDALS vs. THE SERVER
→ Watch the video Legend

Need directions?

iSeries
→ iSeries Developer roadmap

IBM **@serveriSeries**

Evolution of the Species

Compact Cardless Computing (1969, 1975)

Advanced Architecture (1977, 1980)

Scaleable High Performance Computing (1982, 1988, 2000)

S/3 S/32 S/34 S/38 S/36 AS/400 iSeries

96 Col Card (1969)

Inexpensive Interactive Computing (1977, 1980)

Distributed Computing (1982, 1988)

Server Consolidation New Workloads (2000)

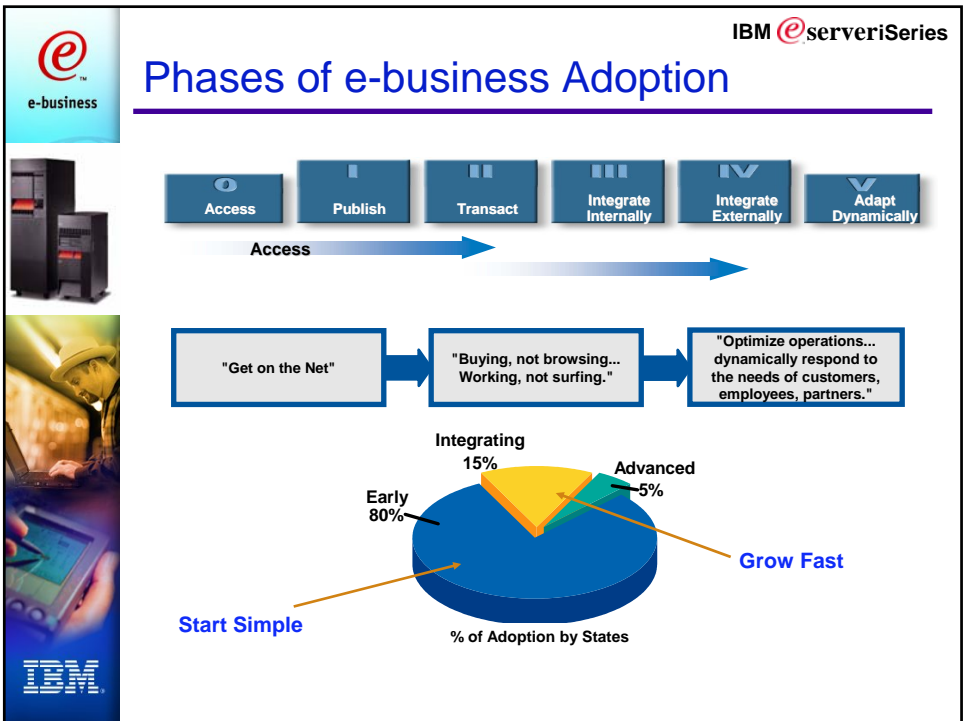
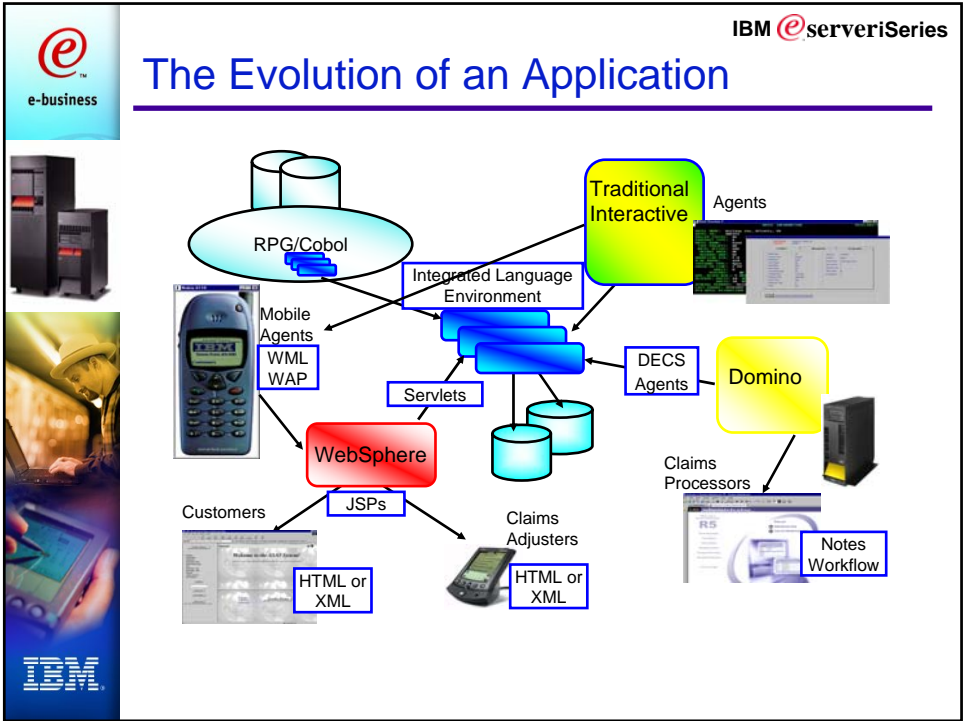
IBM

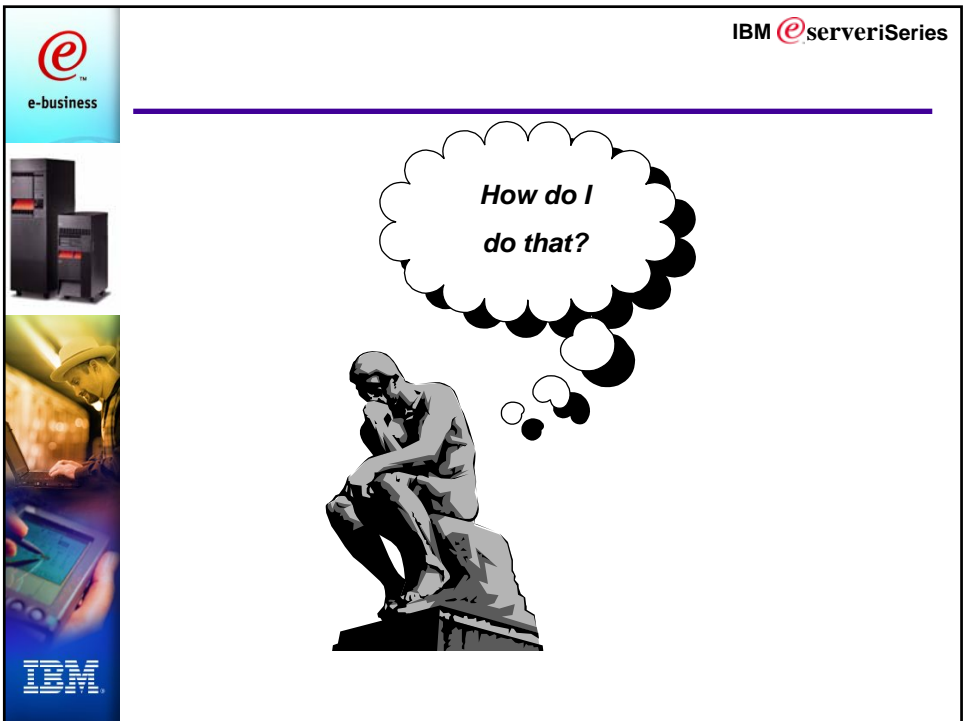
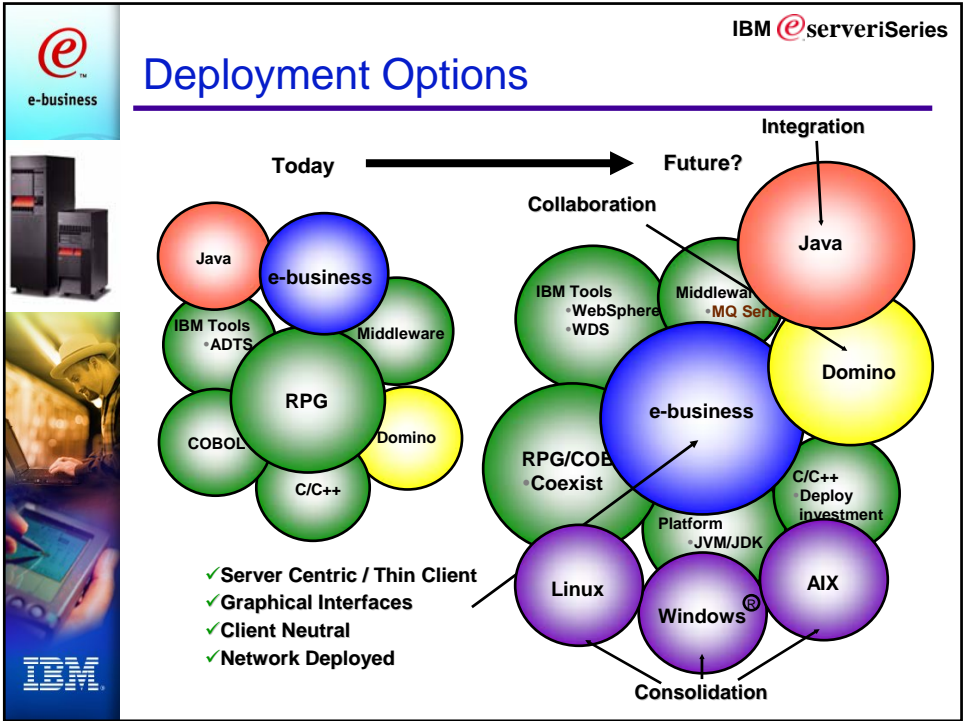
IBM **@serveriSeries**

Devices of the Future / Now

- ✓ Windows Browser
- ✓ Personal Digital Assistants
- ✓ Cell Phones
- ✓ Satellite Dishes on Delivery Vehicles
- ✓ Hand Held Wireless Devices
- ✓ RF ID (Radio Frequency Identification)
- ✓ Virtual Reality Devices
- ✓ Custom Embedded Devices
- ✓ More....

IBM







WebSphere Development Studio client



<p>WebSphere Development Studio Advanced Edition for iSeries WRKSPLF, STRUTS, Build robust J2EE applications with Enterprise JavaBeans</p>
<p>WebSphere Studio Application Developer Build robust J2EE™ applications with Enterprise JavaBean™ (EJB™) Components -- Advanced tools for code generation, performance tuning & best practices -- Relational schema center -- EJB-to-RDB mapping tools</p>
<p>WebSphere Development Studio for iSeries WebFacing -- iSeries extensions to WSSD</p>
<p>WebSphere Studio Site Developer J2EE™ -- Java™ -- Servlets -- JavaServer™ Pages -- XML -- Web Services - Database tools -- Integrated Java Development Environment</p>
<p>WebSphere Studio Homepage Builder WYSIWYG Page editing wizard -- JavaScript™-- Dynamic HTML -- Cascading Style Sheets -- WebVideo Studio -- Advanced image effects</p>
<p>WebSphere Studio Workbench Common User Interface -- Project Management -- Debugging Services -- Plug-in Services & Tools -- Desktop & Help Frameworks -- Local & Team Resource Management</p>



Same Interface – Old



The screenshot shows the 'Remote System Explorer' interface. On the left is a tree view of remote systems, including 'Local', 'TORAS3RM', 'TORAS07M', 'iSeries Objects', 'iSeries Commands', 'iSeries Jobs', 'IFS Files', and '3RM'. The main area is a code editor displaying a table of data with columns for Row, Column, and Replace. The data includes system identifiers like '000100', '000200', '000300', etc., and various system parameters and user information.

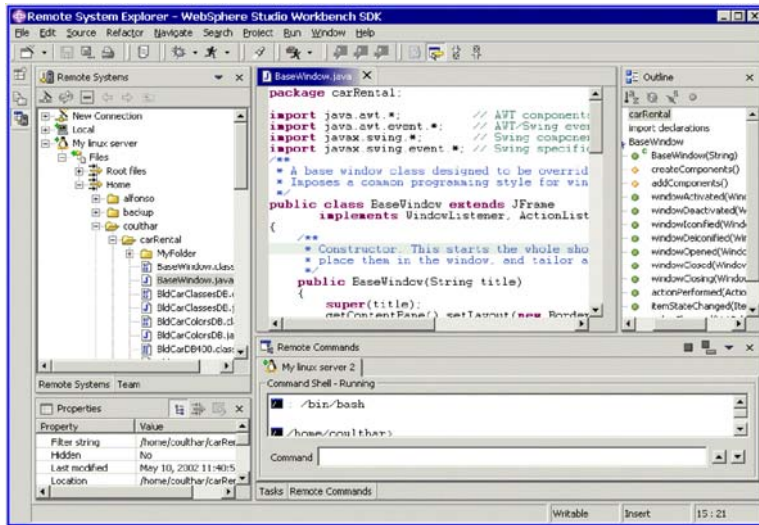
Row	Column	Replace
000100	A=SCTS DD	20001109 162354 QUSER REL-V
000200	A=WRKDC	
000300	A	DSPSIZ(2
000400	A	CF03
000500	A	CF05
000600	A	CF03(03)
000700	A	CF05(05)
000800	A	
000900	A=SCTS SD	20000208 095431 SCHWEYER REL-V
001000	A	1 29 An Exp
001100	A	DSPATRI
001200	A	4 15 Factor
001300	A	4 15 Factor
001400	A	6S ZI 4 25COMP(GT
001500	A	CHKSGIL
001600	A	ZREPL)
001700	A	
001800	A	REPL 1A P
001900	A 06	6S ZI 6 25
002000	A 06	ERRMSG(
	A 06	ERRMSG(

At the bottom, there is a 'Properties' window for the selected folder 'yantzi' with the following details:

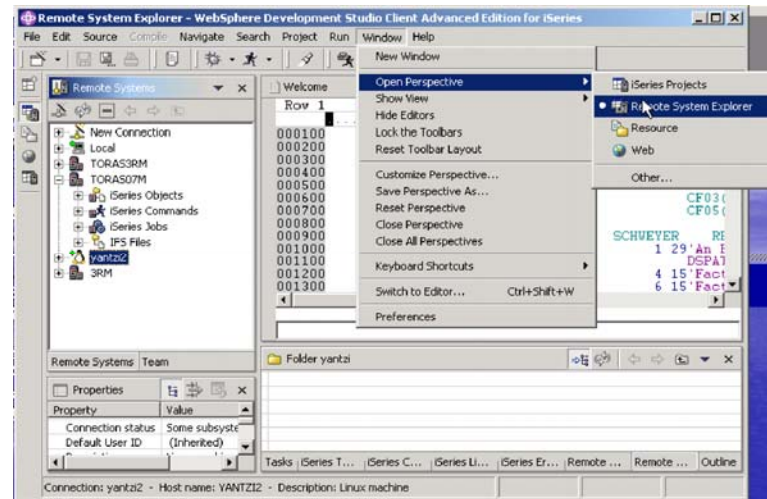
- Property: Connection status, Value: Some subsystem
- Property: Default User ID, Value: (Inherited)
- Property: Description, Value: Linux machine
- Property: Host name, Value: YANTZ12
- Property: Name, Value: yantzi2



Same Interface – or New

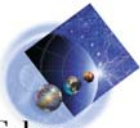




Remote Systems Explorer





IBM e-business **IBM e-serveriSeries**

Bundled Tools Formula


+


=








IBM

IBM e-business **IBM e-serveriSeries**

Path to a Modern User Interface

Original
5250


Innovate

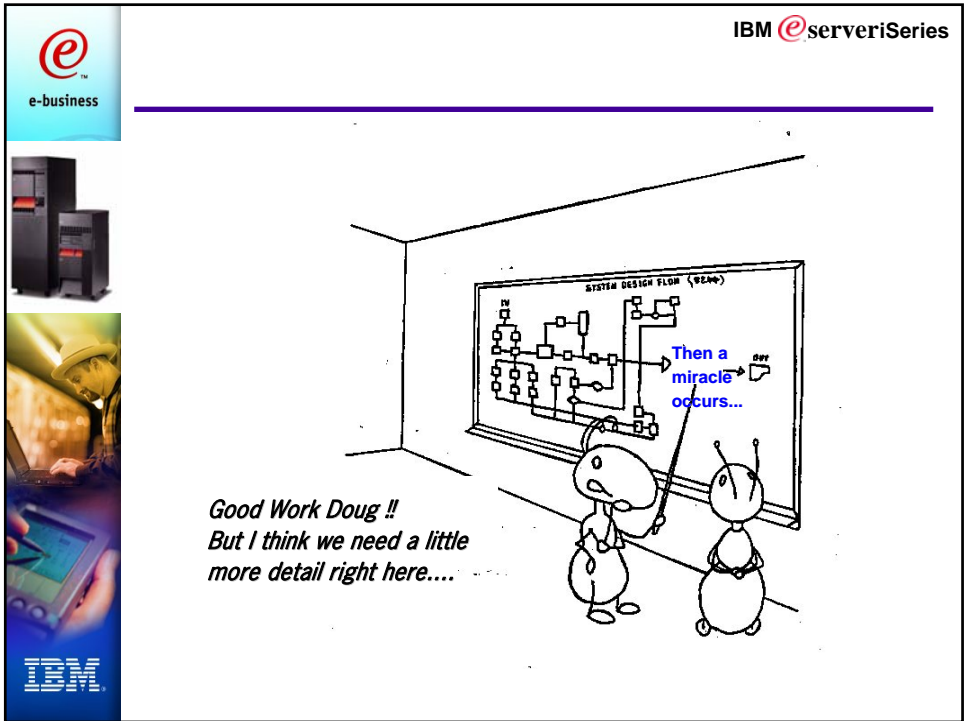
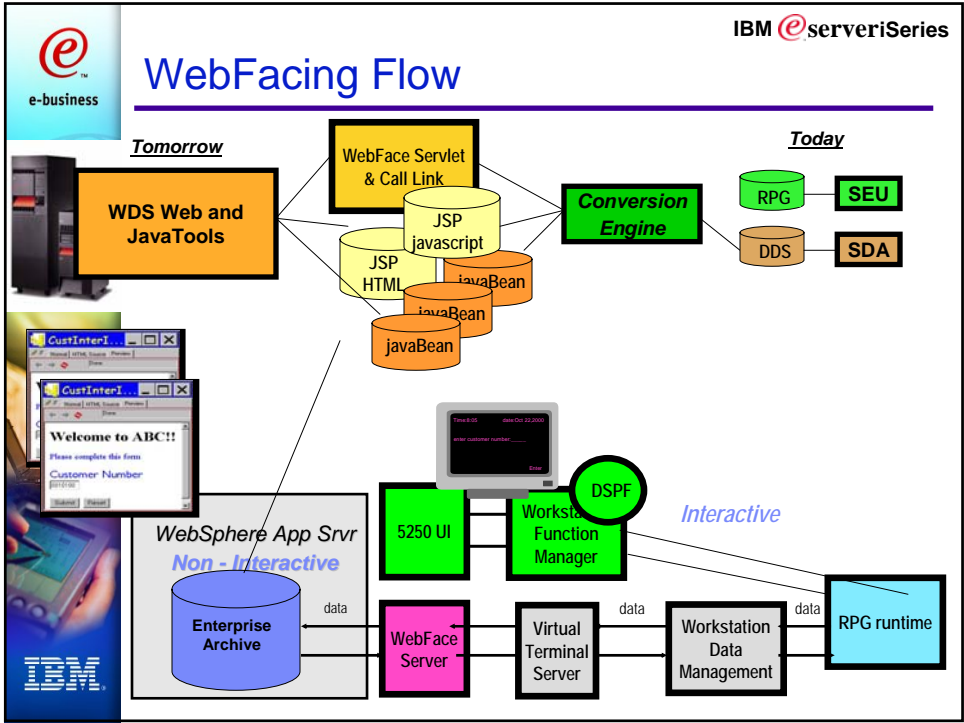
Reface

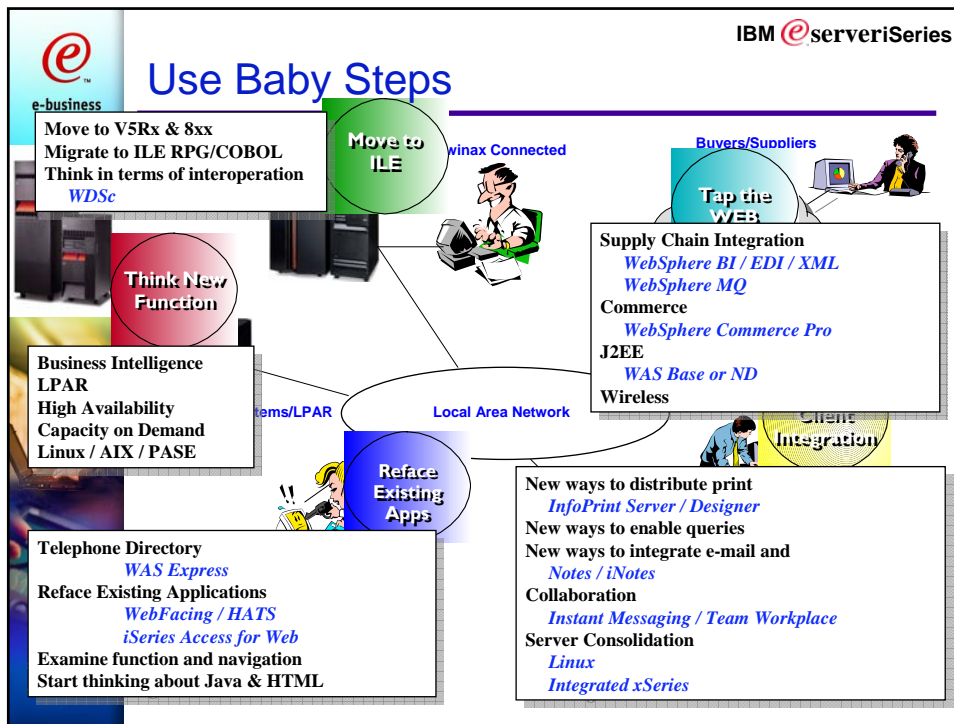
Improve


Integrated



IBM






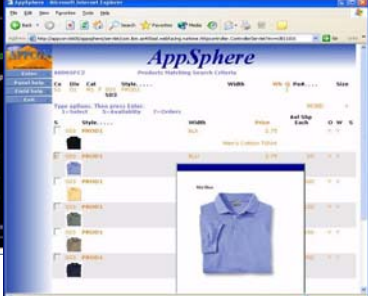



IBM  serverSeries

The WebFacing Tool (WDS)

- Built on WebSphere Application Server
- Part of WebSphere Development Studio for iSeries
- Migrate RPG/5250 applications to GUI
- End-users access applications via browser
- Quick and easy to convert applications
- No interactive workload on NEW systems





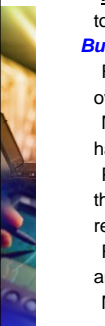
Host Access Transformation Services



- ✓ A Web-to-host HTML emulator...
- ✓ Includes a rules-based transformation engine...
- ✓ Converts green screens to graphical user interfaces (GUIs)...
- ✓ Dynamic conversion....
- ✓ Customer can upgrade to full HATS server from Limited Edition
- ✓ Zero footprint / zero download
- ✓ Supports 3270 & 5250
- ✓ Limited Edition Included in iSeries Access



Portal Integration



Functionality

Browser based - Single point of access

Single Sign On - Global access

Portlets - Windows to all major applications

Access - Secure, filtered access to corporate data

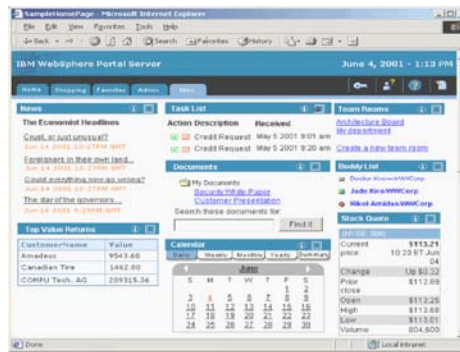
Business Value

Funnel and filter to the overwhelming information
Make better decisions when you have the right information

Provide a common "desktop" with the proper tools that different jobs require

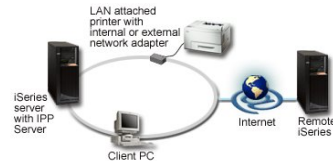
Removing stovepipe applications and departments

More Effective experience



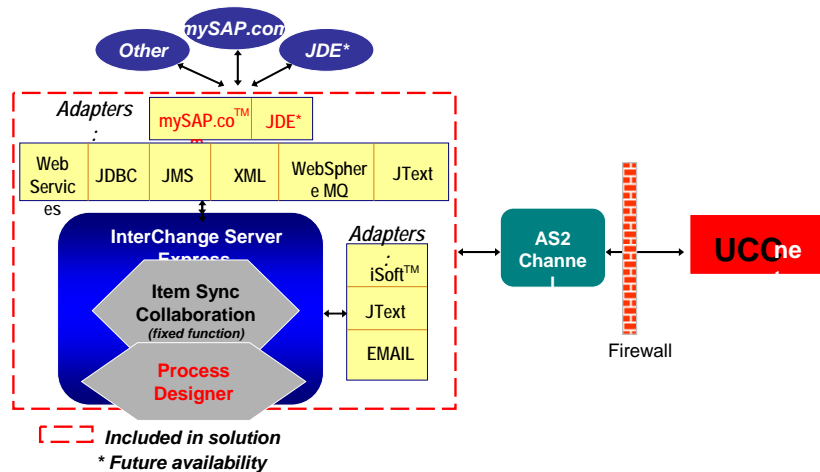
Info Print for iSeries

- ✓ **InfoPrint Server for iSeries**
 - ✓ New PDF and e-mail capabilities
- ✓ **InfoPrint Designer for iSeries**
 - ✓ Enhanced graphical output design
- ✓ **e-Output server in OS/400**
 - ✓ PDF output distribution integrated with iSeries Access
 - ✓ Standard API access to PDF and e-mail functions
 - ✓ Internet Print Protocol (IPP)
- ✓ **Infoprint 85 and 105 printers**
 - ✓ Supported with Print Services Facility for OS/400




WBI Item Sync Overview

Limited Back End Integration




IBM e-business **IBM e serverSeries**


Development Options



iNotes




Optimized for collaboration and workflow



Optimized for distributed transactions and components

Technology-independent messaging infrastructure

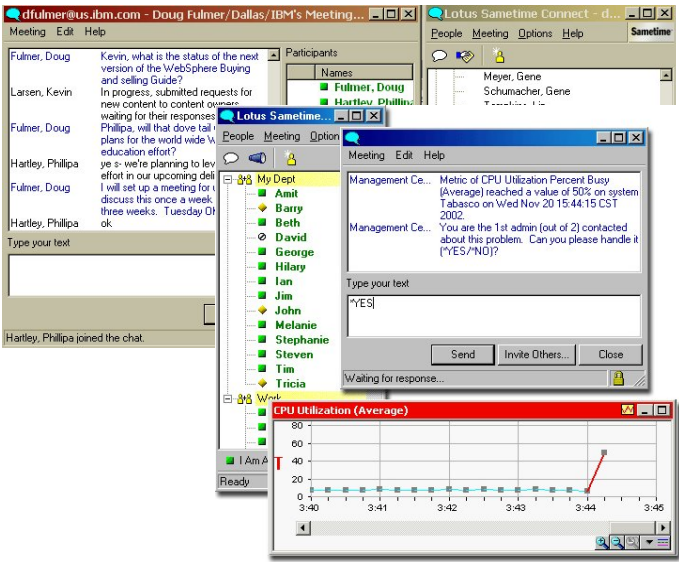
.dowino			
Database	Messaging	Application Development	
Application Integration		Replication	
Manageability	Availability	Security	Scalability
1Series	zSeries	xSeries pSeries	Linux



IBM

IBM e-business **IBM e serverSeries**


Lotus Instant Messaging






The screenshot displays the Lotus Instant Messaging application interface. It includes a chat window with a message from Doug Fulmer: "Kevin, what is the status of the next version of the WebSphere Buying and selling Guide? In progress, submitted requests for new content to content owners waiting for their responses". A participant list shows names like Fulmer, Doug and Hartley, Philippa. A CPU Utilization (Average) graph shows a spike in usage at 3:44. A dialog box is open with the text: "Metric of CPU Utilization Percent Busy (Average) reached a value of 50% on system Tabasco on Wed Nov 20 15:44:15 CST 2002. You are the 1st admin (out of 2) contacted about this problem. Can you please handle it (YES/NO)?".

IBM


IBM @serveriSeries



e-business

*Feeling better...
but is there a
method to the
madness??*



IBM @serveriSeries

Developer's Road Map

	Today	Better Tools	Better User Interface	Better Architecture	Better Portability	Better Scalability
Presentation	5250	5250	Web			
				Web Services		
Logic	RPG/COBOL	ILE RPG/COBOL	Java		EJBs	
Tools	PDM	WDS / RSE		WDS AE / RSE		
		iWA	Web Tools			
		WebFacing	Java Tools			
		HATS	J2EE / EJBs			
Database		DB2 / DDS	Stored Proc / Triggers	SQL		
WebSphere		WAS Express		WAS Base	WAS ND	
		Portal Express		Portal Express Plus		
			WebSphere MQ			
			WebSphere BI			

Customers and partners may enter the map at any stage and may choose to exit at any stage as well.

RSE = Remote System Explorer





Developers Road Map



Home
Products & services
Support & downloads
My account

Select a country
Servers > Midrange servers > iSeries Developer Roadmap >

Midrange servers

- About iSeries
- Small to Medium Enterprises
- Medium to Large Enterprises

Support

- Services
- Software
- Solutions
- Education
- Library

Related links:

- Special offers
- iSeries Nation
- iSeries announcements
- iSeries printing

iSeries Developer Roadmap

Executive overview
Roadmap description
Learning path

Executive overview

Moving from traditional iSeries programming languages (RPG, COBOL, C) to J2EE is a long jump, but does not require a single leap. This chart describes a roadmap-discrete, achievable steps that move developers and applications on the path to an excellently implemented Web future.



click for larger version

The first step in the iSeries Developer Roadmap is moving from RPG development using green screen tools to the latest RPG graphical tools in order to increase productivity. The next step in the roadmap is to extend the application from the traditional 5250 interface to a more modern web user interface. The roadmap also explains many different technologies starting with HTML, JavaScript, and tools like the IBM WebFacing Tool and IBM WebSphere Host Access Transformation Server (HATS). It moves on to Java 2 Standard Edition with Java, servlets, and JavaServer Pages and to integration technologies like XML and Web Services; to full Java 2 Enterprise Edition with Enterprise JavaBeans.

With the new web environment, the WebSphere Application Server is introduced with a WebSphere Application Server - Express version, progressing to WebSphere Application Server and also WebSphere Application Server Network Deployment for advance scalability and higher availability.

iSeries demo

Why iSeries?

- Launch the demo
- Requires the flash plugin
- HTML version

Special report

iSeries: Three in one

See the full details

Legends of iSeries

CATCH THE

<http://www-1.ibm.com/servers/eserver/iseries/roadmap/index.html>





Developers Road Map Drill Down



Home
Products & services
Support & downloads
My account

Select a country
Servers > IBM eServer Solutions Enablement >

IBM eServer Solutions Enablement

Enablement roadmaps & resources

Technical resources

- Education
- News & events
- Marketing resources
- Selling resources
- Feedback

Related links:

- IBM eServer
- IBM PartnerWorld
- developerWorks
- Scenarios for e-business on demand

iSeries Developer Roadmap

Executive overview
Roadmap description
Learning path
Learn more...

Overview

- Today
- Better user interface
- Better portability
- Better tools
- Better architecture
- Better scalability

Next page →

This chart describes a roadmap - discrete, achievable steps that move developers and applications on the path to an excellently implemented Web future.



click for larger version

Starting from the left, this is where most IT shops that use the iSeries platform and Business Partners are today. Typically, day-to-day development tasks still involve building and maintaining green-screen applications via traditional 5250 tools such as Programming Development Manager (PDM), Source Entry Utility (SEU), and Screen Design Aid (SDA).

The first step to Web application enhancement involves embracing modern tools to do the same development work previously accomplished via PDM, SEU, and SDA (see the "Better Tools" column).

about each of these steps via an online course





Developers Road Map Drill Down



Search

[Home](#) | [Products & services](#) | [Support & downloads](#) | [My account](#)

Servers > IBM eServer Solutions Enablement >



IBM eServer Solutions Enablement

Enablement roadmaps & resources

Technical resources

Education

News & events

Marketing resources

Selling resources

Feedback

Related links:

[IBM eServer](#)

[IBM PartnerWorld](#)

[developerWorks](#)

[Scenarios for e-business on demand](#)

iSeries Developer Roadmap

Executive overview
Roadmap description
Learning path
Learn more...

- Overview
- Today
- Better tools


- Better user interface
- Better architecture


- Better portability
- Better scalability

← Previous page | Next page →


- **Create new iSeries e-business solutions**
 - Using Web & Web services tools in WebSphere Development Studio Client
 - IBM i CORREL SDK for business logic
 - Series Web Tools to generate other
- **Value Proposition**
 - Properly architected new Web applications offer:
 - Easier maintenance / reuse of business logic
 - Response to increasing demands
 - Quicker support for multiple interfaces: Web, phone, ...
 - Faster support for B2B via Web services
 - iSeries Web Tools offer:
 - Focus on business logic, not J2EE plumbing
 - Reduce SDK links in Web page development
- **Education Enablement**
 - Introduction to e-business
 - Web application artifacts, architecture, terms
 - Introduction to Struts framework for Web applications
 - Introduction to Web services
 - Tools
 - Series Web, Struts, Web services (including iSeries ProgramCall wizard)
 - WebSphere Application Server education







Learning Path



Search

IBM eServer Solutions Enablement

Enablement roadmaps & resources

Technical resources

Education

News & events

Marketing resources

Selling resources

Feedback

Related links:

[IBM eServer](#)

[IBM PartnerWorld](#)

[developerWorks](#)

[Scenarios for e-business on demand](#)

To learn more about writing modular callable code

Writing Modular Code

Face-to-Face Learning

[Enroll in course S6126](#) - Moving from RPG/400 to iSeries RPG IV (3.0 days)

[Enroll in course S6199](#) - iSeries RPG IV V5 Programming - Advanced (4.0 days)

Documentation, Redbooks, white papers, etc.

[SG24-5402](#) - Who Knew You Could Do That With RPG IV?

[GG24-4358](#) - Moving to Integrated Language Environment

[Return to top of page](#)

To learn more about database

To learn more about database

Face-to-Face Learning

[Enroll in course S6145](#) - DB2 UDB for iSeries (1 day)

[Enroll in course -](#) DB2 Performance workshop

Web-based Learning

[Register for -](#) DB2 UDB for iSeries online courses





Documentation, Redbooks, white papers, etc.

[IBM Solutions Enablement Web site](#) - DB2 UDB for iSeries


[Explore](#) - DB2 UDB for iSeries white papers

IBM *e*serverSeries

e
e-business

AAAHHHH,
better.... How
about non-IBM?









IBM *e*serverSeries

e
e-business

Application Servers

- **BEA WebLogic Server**
• www.bea.com
- **ASF Tomcat**
• www.apache.org
- **JBoss**
• www.jboss.com
- **Proprietary Tool Solution Servers**



e-business

IBM @serveriSeries





Refacing Solutions


- **Seagull Software LegaSuite**
• www.seagullsw.com
- **Jacada Interface Server**
• www.jacada.com
- **Look Software NewLook**
• www.looksoftware.com
- **System Objects JACi400**
• www.systemobjects.com
- **Linoma/Arterial Software aXes**
• www.linomasoftware.com
- **Farabi Technologies Host Front**
• www.farabi.com
- **Advanced BusinessLink**
• www.businesslink.com
- **Better Online Solutions Jadvantage**
• www.bosweb.com












e-business


IBM @serveriSeries









New Development Application

- **Lansa**
• www.LANSA.com
- **mrc**
• www.mrc-productivity.com
- **Business Computer Design**
• www.bcdsoftware.com
- **Magic Software**
• www.magicsoftware.com
- **GeneXus**
• www.genexus.com
- **Computer Associates**
• www.ca.com
- **ASNA**
• www.asna.com












e-business


IBM @serveriSeries


Print Solutions







- **RJS**
• www.rjssoft.com
- **Gumbo**
• www.gumbo.com
- **Symtrax**
• www.symtrax.com
- **Cobwebb**
• www.cobwebb.com
- **BCD**
• www.bcdsoft.com











e-business

IBM @serveriSeries

Domino Solutions






- **Binary Tree**
• www.binarytree.com
- **Blue Notes**
• www.bluenotes.com
- **Inventive Designers**
• www.inventivedesigners.com
- **Trend Micro**
• www.trend.com
- **Help/Systems**
• www.helpsystems.com
- **Showbusiness**
• www.showbusiness.com













