

Not just a 'Webulator': IBM i Access for Web Leveraging Print and Database Capabilities

Session #409136

Wayne Bowers
Software Engineer
wbowers@us.ibm.com



Monday			
8:00am	S. China Sea	OPEN LAB: Test Drive IBM i Access for Web OPEN LAB: Meet the New IBM i Access	420063 580085
9:30am	S. China Sea	OPEN LAB: Test Drive IBM i Access for Web OPEN LAB: Meet the New IBM i Access	420063 580085
2:00pm	Pacifica Ballroom 10	The Next Generation of IBM i Access	580083
5:00pm	Pacifica Ballroom 10	IBM i Access for Web Including 5250 Browser Access	409136
Tuesday			
8:00am	Pacifica Ballroom 1-2	IBM i Mobile Access	590448
2:00pm	Banda Sea 1	IBM i Access 5250 Emulation	590257
3:30pm	Banda Sea 1	Not just a 'Webulator': IBM i Access for Web Leveraging Print and Database Capabilities	580029
Wednesday			
8:00am	Pacifica Ballroom 11	IBM i Access Deployment and Migration	590256
5:00pm	Banda Sea 1	IBM i Access Data Transfer	590258



- Access for Web Overview
- Access for Web Print Capabilities
- Access for Web Database Capabilities
- Controlling Access

Overview



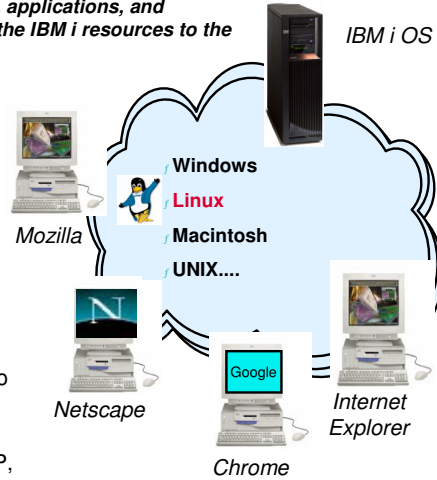
End users can leverage business information, applications, and resources across an enterprise by extending the IBM i resources to the client desktop through a web browser

Provides access to IBM i through a browser

- 5250 access
- Access to database, integrated file system, printers, output queues, jobs
- Can run batch commands and send/receive messages

It has the following advantages:

- Is server based
- Requires only a browser on the client, no configuration required at desktop, no applets installed on desktop
- Uses industry standard protocols - HTTP, HTTPS and HTML



Print

- Printer output
- PDF Printer output
- Printers
- PDF Printers
- Internet Printers
- Internet Printer Shares
- Printer shares
- Output Queues
- AFP to PDF Conversion

5250

- Active Sessions
- Start 5250 Session
- Configured Sessions
- Bypass Sign-on

Files

- Browse Files
- File Shares
- Browse File Share

Scheduling of tasks

Messages

- Display Messages
- Send Messages
- Sametime
- Operator Messages
- Message Queue

Database

- Tables
- My Request
- Run SQL
 - Open Office Formats
 - Wizards supports joins
 - Chart SQL results
- Copy Data to Table
- Import Requests
 - System I Access for Windows
 - Query Manager & Query/400

Commands

- Run commands
- My commands
- Search

My Personal Folder

Jobs

- Active Jobs **(new in r7.2)**
- User Jobs
- Server Jobs

Customize

- Preferences
- Policies
- Settings
- Transfer configuration data

System **(new in r7.2)**

- Installed Products
- List Software Fixes
- System Values
- Extract IBM i data

Single sign-on

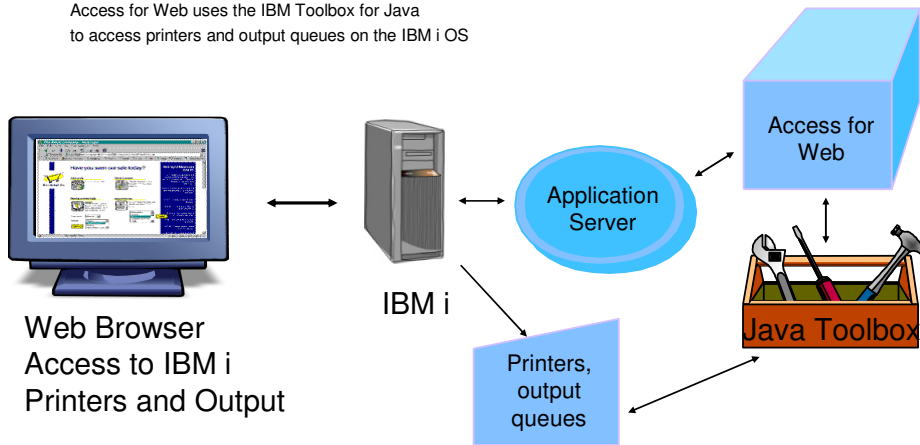
- EIM (WAS authentication)
- Windows domain login (WAS SPNEGO authentication)

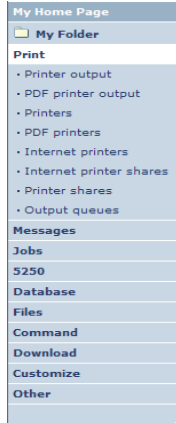
Access for Web Print



Access for Web Print Overview

Access for Web uses the IBM Toolbox for Java to access printers and output queues on the IBM i OS





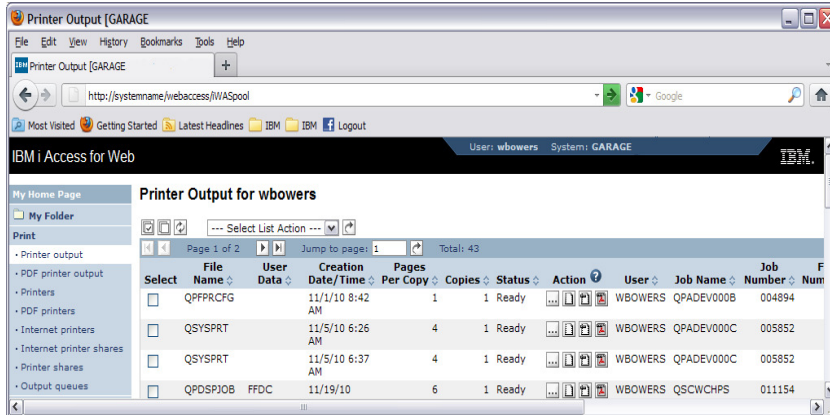
Access for Web has many end user functions for printing and print management.

- Printer output - preview, manage output
- PDF printer output – view, manage PDF printer output
- Printers - view and manage printers and output
- PDF printers – view and manage PDF printers
- Internet printers - list and manage internet printers
- Internet printer shares – list and manage internet printer shares
- Printer shares - view printers and manage output
- Output queues - view and manage queues and output

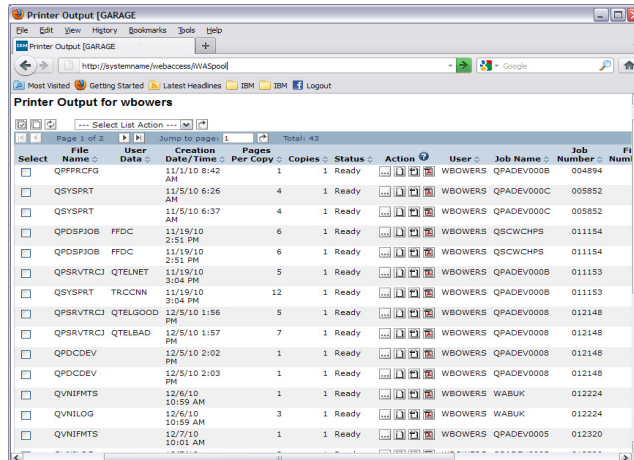
Printer Output

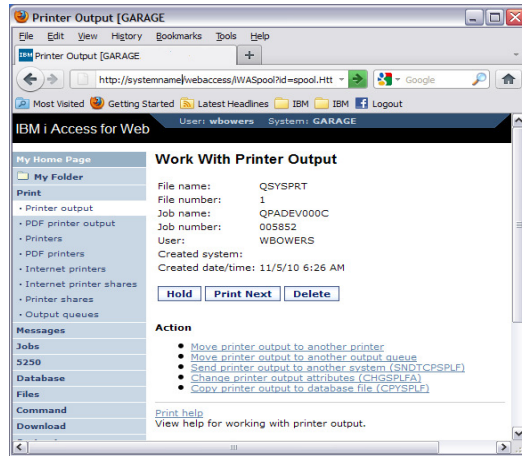


- Display spooled files for the signed on user for all output queues
- Use navigation to navigate list
- List shows spooled file attributes - pages per copy, number of copies



- View status
- Work with printer output
- View printer output
- View as PDF





- Hold/release
- Print next
- Delete
- Move to another printer
- Move to another output queue
- Send output to another server
- Change printer output attributes
- Copy printer output to a database file
- Actions based on current state and writer availability

View SCS and AFP spooled files in several formats:

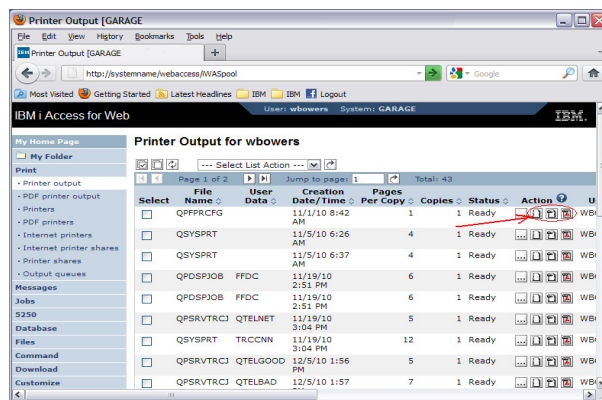
- PNG
- TIFF
- PCL
- AFP
 - AFP Plugin
 - AFP Viewer

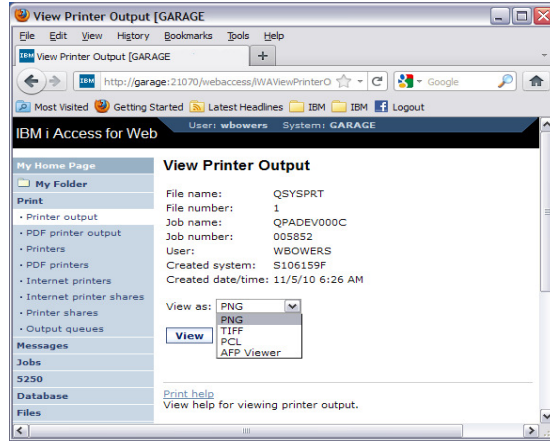
View

- Configure default view in Preferences

View as

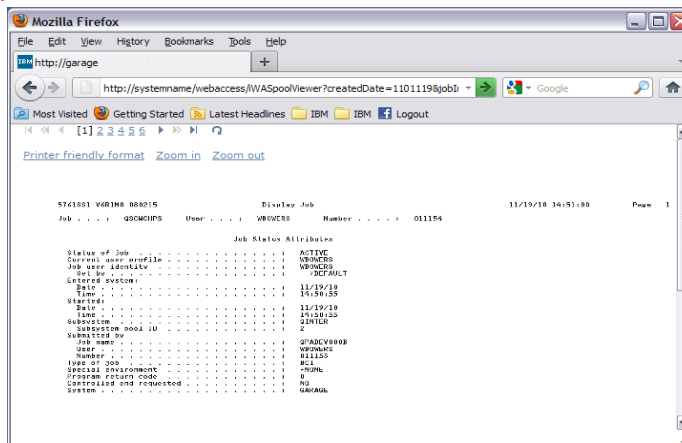
- Select format to view



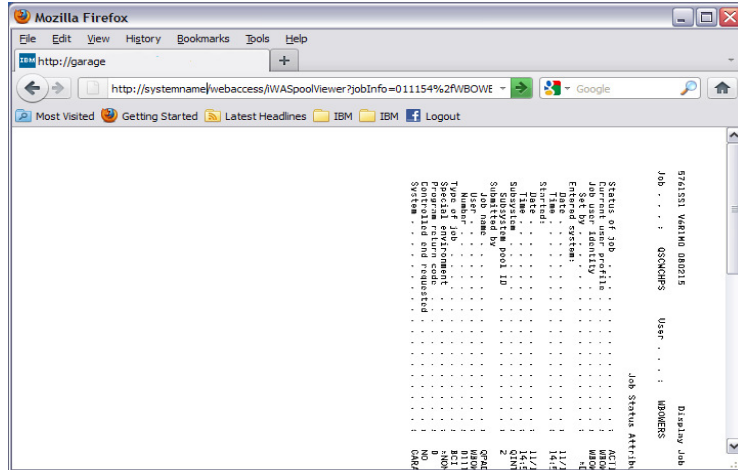


- PNG
- TIFF
- PCL
- AFP viewer
 - AFP Viewer plug-in
 - AFP Viewer

- Rendered as PNG images inside HTML
- Displayed one page at a time
- Use page navigation to navigate between pages
- Zoom in and out

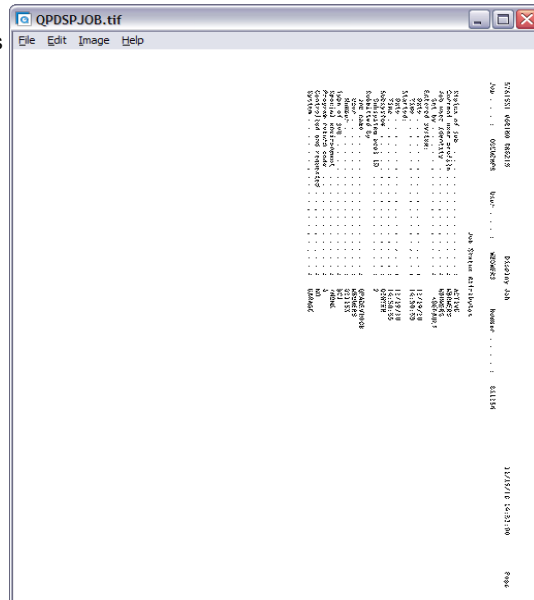


- Rotated to correct orientation for printing
- Removed navigation
- Print from the browser



© 2014 International Business Machines Corporation

- Graphic format
- Supported by external viewers and programs
- Print from viewer



© 2014 International Business Machines Corporation

- View AFP output

The screenshot shows a window titled "Viewer - QPDSPJOB-1.scs" with a menu bar (File, Edit, View, Search, Notes, Options, Help) and a toolbar. The main content area displays the following text:

```

S761551 V6R1M0 080215          Display Job          11/19/10 14:51:00   Page 1
Job . . . . : QSCWCHPS  User . . . . : W80WERS      Number . . . . : 011154

Job Status Attributes
Status of job . . . . . : ACTIVE
Current user profile . . . . . : W80WERS
Job user identity . . . . . : W80WERS
Set by . . . . . : DEFAULT
Entered system:
Date . . . . . : 11/19/10
Time . . . . . : 14:50:55
Started:
Date . . . . . : 11/19/10
Time . . . . . : 14:50:55
Subsystem . . . . . : QINTER
Subsystem pool ID . . . . . : 2
Submitted by
Job name . . . . . : 8RADEV0008
User . . . . . : W80WERS
Number . . . . . : 011153
Type of job . . . . . : BC
Special equipment . . . . . : NONE
Program return code . . . . . : 0
Controlled and requested . . . . . : NO
System . . . . . : GARAGE
  
```

At the bottom of the window, it shows "100% DEFAULT No group is selected".

© 2014 International Business Machines Corporation

- AFP Viewer Plugin
 - Plugin for Internet Explorer and Mozilla web browsers

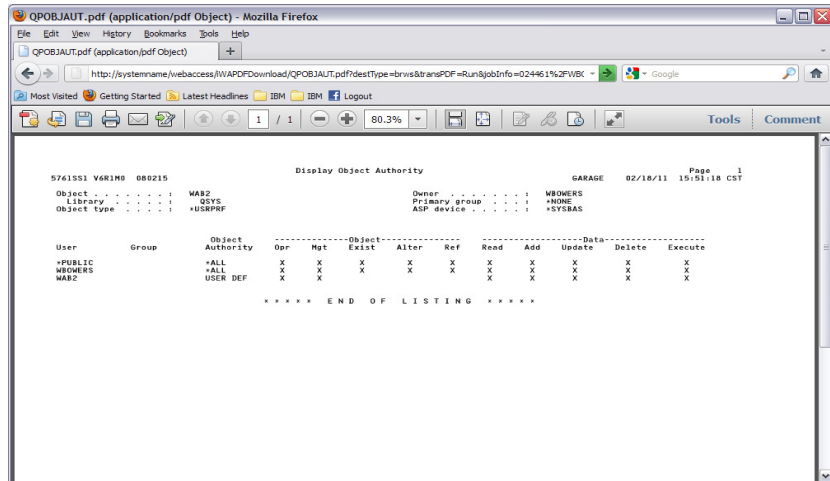
InfoPrint Solutions Version 3.6.0.11 available from

<http://support.rpp.ricoh-usa.com/apps/internet/dcfdata.nsf/vwweb/p4000233>

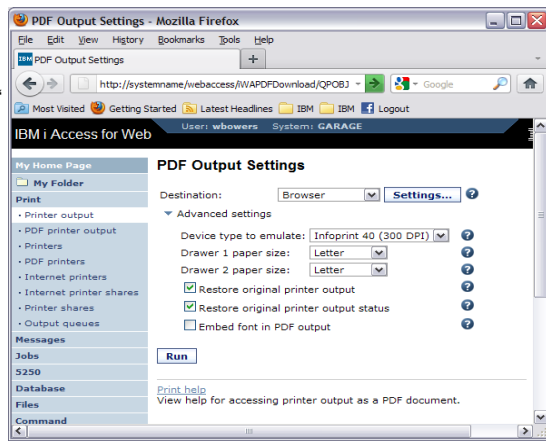
– InfoPrint Solutions was created as a joint venture between IBM and Ricoh and is completely owned by Ricoh

- AFP Workbench Viewer
 - Available to be installed with IBM i Access for Windows
 - Also available with other InfoPrint Solutions products
 - Greater function than the web browser plugin

© 2014 International Business Machines Corporation



- Select device type
- Select paper size
 - default by browser locale
- Select destination
 - browser
 - mail as attachment
 - personal folder
- Output is removed from the output queue if "Restore original printer output" is not checked

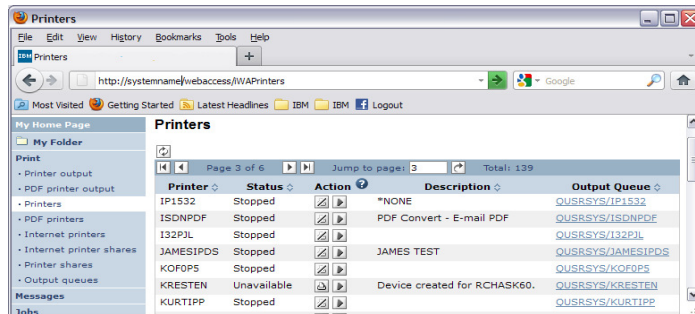


- Utilizes either
 - IBM Infoprint Server (5722-IP1) if installed
 - Can be disabled by Policy or Preference
 - Will fail if not licensed
 - Highest Function of True PDF support
 - IBM Transform Service for i – 5770TS1 Option 1 Transforms – AFP to PDF Transforms
 - Can be disabled by Policy or Preference
 - True PDF document
 - Built in IBM Host Print Transform iText support
 - Generated PTF is image only
- View printer output as PDF
 - Requires PDF viewer such as Adobe Acrobat Reader
- Destination
 - Browser
 - Preview or Save/Print from Browser PDF viewer
 - Mail as Attachment
 - Send PDF result as attachment to a list of email addresses
 - Status sent to own email address
 - Works well with large output files, runs in background
 - Send to personal folder
 - Send to user's own or other users' folders
 - Status sent to user's own folder
 - Works well with large output files, runs in background
- "Restore original printer output" setting
 - Places spooled file back on the output queue after being displayed, deleted if not selected
- "Embed font in PDF output" setting
 - Larger PDF document download size, but ensures font is available when viewing

Printers

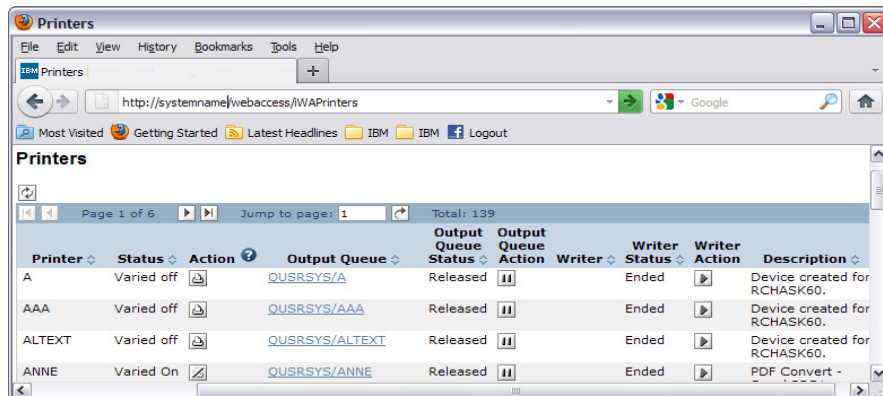


- View system printers
- Check printer status
- Perform Actions
 - Start
 - Stop
 - Make Available
 - Hold
 - Make Unavailable
- Basic and Advanced View



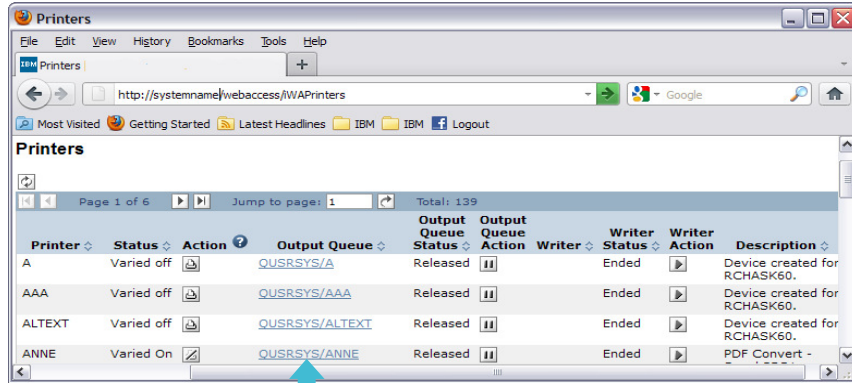
© 2014 International Business Machines Corporation

- More advanced options
- Enabled in preferences
- Work with print writers
- Vary On/Vary Off printers
- View queue status



© 2014 International Business Machines Corporation

List output for a printer

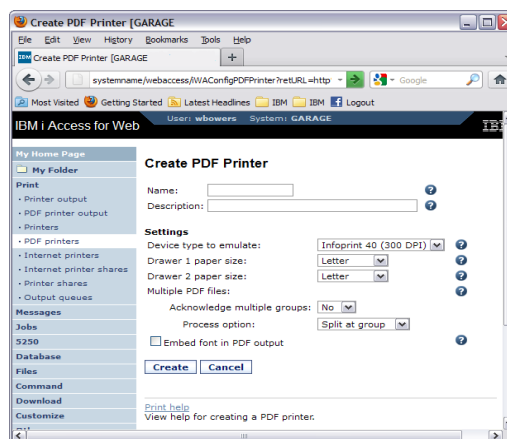


Click on the output queue associated with a printer to list the output in the queue



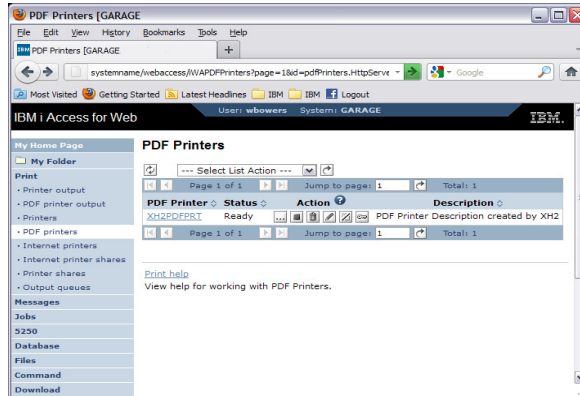
- Requires IBM InfoPrint Server (5722-IP1)
- Appears as an OS/400 printer device and OUTQ
- Printer output sent to printer is automatically converted to PDF
 - Good way to generate PDF documents from 5250 applications

- Enter printer name (required)
- Enter printer description (optional)
- Adjust settings if appropriate
 - Default settings appropriate for most cases



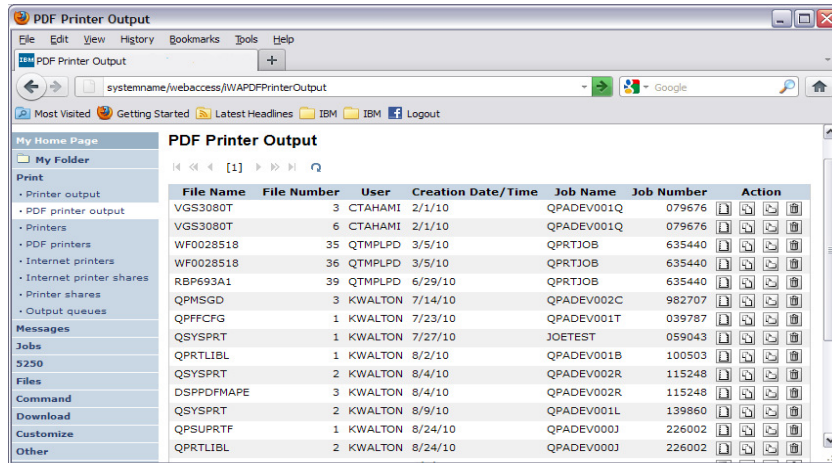
Listing PDF Printers

- View PDF output for printer
- Start/stop printer
- Work with printer
- Delete printer
- Change printer settings



PDF Printer Output





File Name	File Number	User	Creation Date/Time	Job Name	Job Number	Action
VGS3080T	3	CTAHAMI	2/1/10	QPADEV001Q	079676	[View] [Copy] [Delete]
VGS3080T	6	CTAHAMI	2/1/10	QPADEV001Q	079676	[View] [Copy] [Delete]
WF0028518	35	QTMLPLD	3/5/10	QPRTJOB	635440	[View] [Copy] [Delete]
WF0028518	36	QTMLPLD	3/5/10	QPRTJOB	635440	[View] [Copy] [Delete]
RBP693A1	39	QTMLPLD	6/29/10	QPRTJOB	635440	[View] [Copy] [Delete]
QPMSGD	3	KWALTON	7/14/10	QPADEV002C	982707	[View] [Copy] [Delete]
QFFCFG	1	KWALTON	7/23/10	QPADEV001T	039787	[View] [Copy] [Delete]
QSYSVRT	1	KWALTON	7/27/10	JOETEST	059043	[View] [Copy] [Delete]
QRTLIBL	1	KWALTON	8/2/10	QPADEV001B	100503	[View] [Copy] [Delete]
QSYSVRT	2	KWALTON	8/4/10	QPADEV002R	115248	[View] [Copy] [Delete]
DSPDFMAPE	3	KWALTON	8/4/10	QPADEV002R	115248	[View] [Copy] [Delete]
QSYSVRT	2	KWALTON	8/9/10	QPADEV001L	139860	[View] [Copy] [Delete]
QSPUPRTF	1	KWALTON	8/24/10	QPADEV000J	226002	[View] [Copy] [Delete]
QRTLIBL	2	KWALTON	8/24/10	QPADEV000J	226002	[View] [Copy] [Delete]

- Lists PDF printer output produced by PDF printers that the logged on user is authorized for
- Printer output actions
 - View
 - Copy to file
 - Copy to IFS file
 - Copy to folder
 - Copy to personal folder
 - Delete
 - Mail as attachment
- Also places PDF on OUTQ of Printer name created in QUSRIWA2 library that the PDF can be accessed from

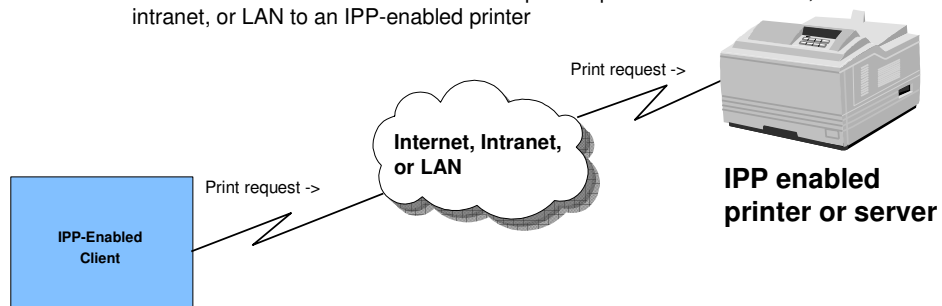
Internet Print Protocol (IPP)



© 2014 International Business Machines Corporation

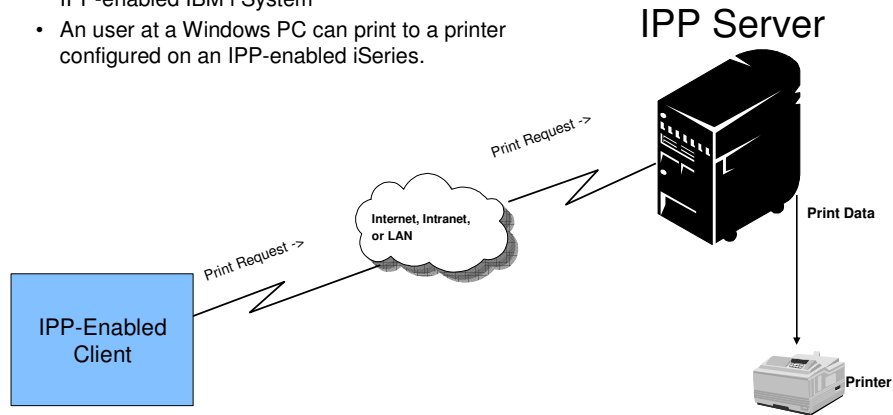
Internet Print Protocol (IPP)

- IPP
 - Client-server protocol
 - Industry standard
 - Allows an IPP-enabled client to submit a print request over the internet, an intranet, or LAN to an IPP-enabled printer

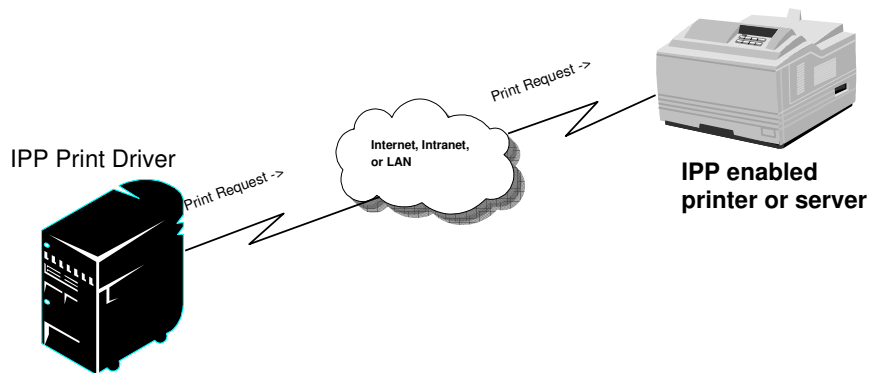


© 2014 International Business Machines Corporation

- An IPP-enabled client is able to submit a print request, over the internet, an intranet or LAN to an IPP-enabled IBM i System
- An user at a Windows PC can print to a printer configured on an IPP-enabled iSeries.



- Printer driver - *IBMIPPDRV
- Print from IBM i System to an IPP printer or server



- Access for Web displays the list of “Internet Printer Shares” defined on the IBM I System (IBM i as IPP server)
 - List output in the queue
 - Control and display printer output
- IBM i printers that are configured to print to an IPP printer (IBM i System as IPP client) are listed with “Internet Printers”
 - Work with Internet Printers
Start/Stop, etc.

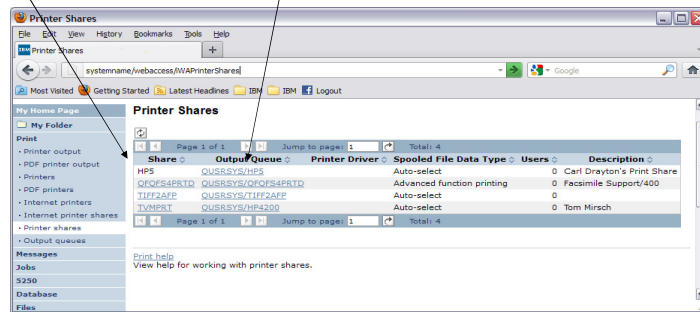
Printer Shares



Netscaler Printer Shares

Click on share name to manage the printer

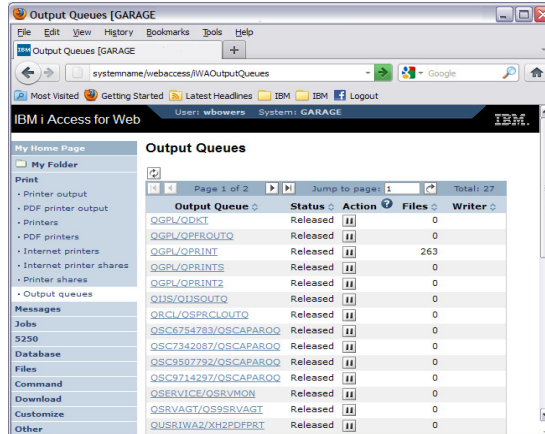
Click on the output queue name to display the printer output



Output Queues



- List output queues for current "filter"
- Click on output queue to display a list of spooled files
- View status
- Change status
- View number of spooled files on the queue
- View associated writer

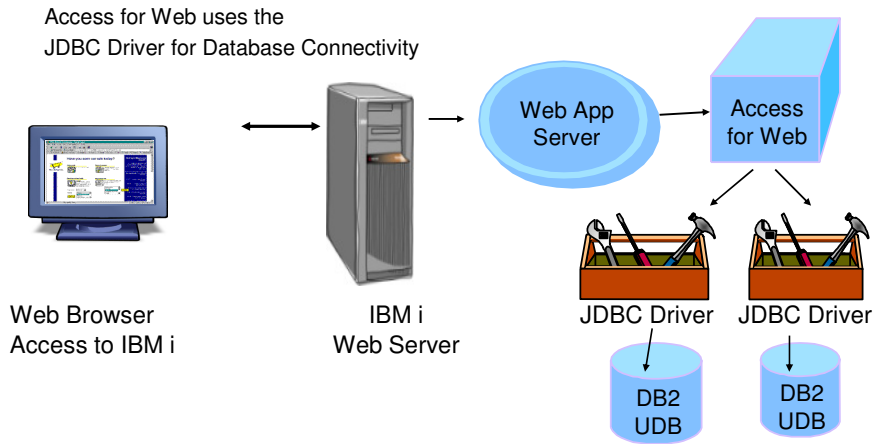


- Access for Web Print:
 - Preview and print output in several formats
 - Manage printers
 - Work with Internet printer shares
 - Work with printer shares
 - Manage output queues

Access for Web Database



- Database Functional Overview
- Copy Data to Table
- Run SQL
- My Requests
- Import Requests and Queries
- Tables



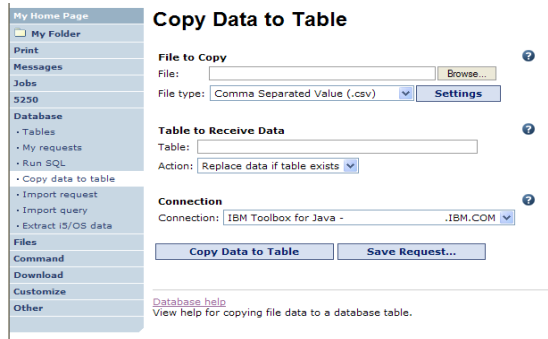
Copy Data to Table



Copy data to table function allows you to copy PC data into a DB2 for IBM i table

Specify:

- **File name**
- **File type**
- **File settings**
- **Table name**
- **Replace or append records to table**
- **Connection**

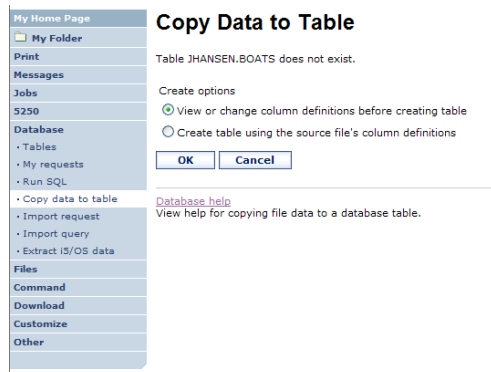


Copy data to table will create a new table if one does not exist

Choose to view or change the table definition

or

To simply create the table using the default definition determined by Access for Web



Verify column definitions for a new table

From this panel you may add a description, change data types, column length, and scale

Click Create Table to create the new table and copy your data to the new table

Table Column Definitions

Verifying column definitions before creating the table is recommended. You can change any of the column definition attributes before clicking Create Table.

Column	Description	Type	Length	Scale	Sample Data
BTYPE		CHAR	1	0	T
BNAME		CHAR	29	0	Mku Mku Original Tug
BFEET		NUMERIC	3	0	126
BYS&L		NUMERIC	6	0	1444
BCOST		NUMERIC	9	0	249000
BNT01		CHAR	71	0	-located in Seattle, WA.
BNT02		CHAR	66	0	"The 'FLORENCE FILBERG' is an all-wood, single deck, raised forward."
BNT03		CHAR	68	0	two of seven 180 class hp with sharp stem, model hull #18
BNT04		CHAR	64	0	elliptical stem. Decks have a pronounced sheer forward and the
BNT05		CHAR	69	0	deckhouse is located amidships with low wind and raised gear
BNT06		CHAR	72	0	60kw generators.
BNT07		CHAR	72	0	- 7/91 survey says,
BNT08		CHAR	70	0	"As a motor yacht, she is massively stronger than any conventional
BNT09		CHAR	70	0	yacht requirements and, therefore, with continued
BNT10		CHAR	63	0	proper maintenance, the vessel should exceed its longevity as a
BNT11		CHAR	70	0	working vessel."
BNT12		CHAR	62	0	
BNT13		CHAR	55	0	
BNT14		CHAR	52	0	
BNT15		CHAR	49	0	
BHTM1		CHAR	12	0	MEKMEK1.jpg
BHTM2		CHAR	0	0	

Create Table Cancel

Run SQL

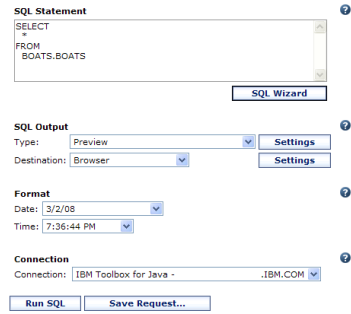


The Run SQL function allows you to type in a free-form SQL Statement

- If you do not know SQL, then use the SQL Wizard to help you generate an SQL SELECT statement
- Select from a variety of output formats, including:

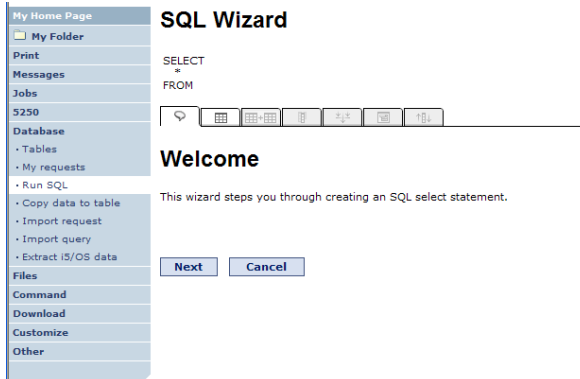
- Preview
- PDF
- .XLS (Excel)
- XML
- SVG
- ...

Run SQL



The SQL Wizard helps you generate a SELECT statement

Includes support for joining tables

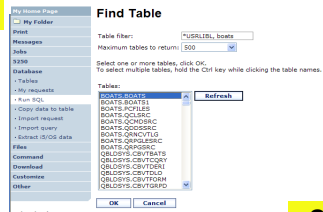
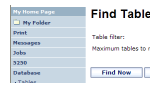
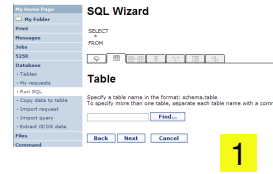


Step 1:

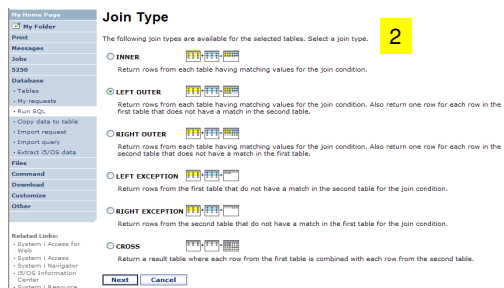
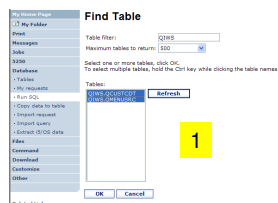
Choose a table

Type in a **table filter** to help narrow your search. Many schemas (libraries) may be specified by putting them in a comma separated list

Select a table and click OK to use it to generate the SELECT statement



- Select multiple tables
- Select the join type
- Optionally add conditions



Step 2:

Choose columns

- Check the boxes next to the columns to include them in the statement

If you check none, you get all columns

- Click the column order button to change the order output

Changed Price from 50 to 05 so it would be first

SQL Wizard

SELECT
FROM
"BOATS","BOATS"

Columns

Select which columns to include. If no columns are selected, all columns are included.

Column	Description	Heading
<input checked="" type="checkbox"/> BTYPE	P=Powered S=Sailing	Column name
<input checked="" type="checkbox"/> BNAME	boat name	Column name
<input checked="" type="checkbox"/> BFEET	Length in feet	Column name
<input checked="" type="checkbox"/> BYEAR	Year built	Column name
<input checked="" type="checkbox"/> BCOST	Price in US\$	Column name
<input type="checkbox"/> BNT01	Note 1	Column name
<input type="checkbox"/> BNT02	Note 2	Column name
<input type="checkbox"/> BNT03	Note 3	Column name
<input type="checkbox"/> BNT04	Note 4	Column name

Column Order

To change the order in which columns are included, change the order values. Columns with smaller order values will be included before columns with larger order values.

Order	Column	Description
10	BTYPE	P=Powered S=Sailing
20	BNAME	boat name
30	BFEET	Length in feet
40	BYEAR	Year built
05	BCOST	Price in US\$

OK Cancel

Step 3:

Adding conditions

- Conditions allow you to select records that meet certain criteria.
- Click Add New Condition to specify a condition.
- Select the column to use in the condition and click Next

SQL Wizard

SELECT
"BCOST", "BTYPE", "BNAME", "BFEET", "BYEAR"
FROM
"BOATS","BOATS"

Condition

To add a condition, click Add New Condition. To continue, click Next.

Add New Condition

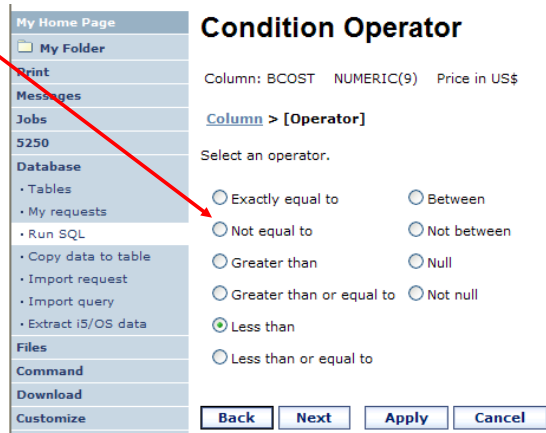
Back Next Finish Cancel

Condition Column

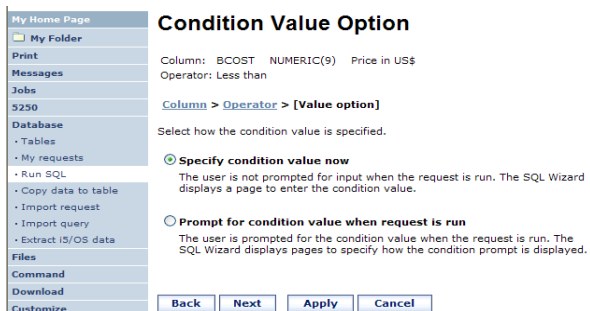
Select a column.

Column	Type	Description
<input type="radio"/> BTYPE	CHAR(1)	P=Powered S=Sailing
<input type="radio"/> BNAME	CHAR(30)	boat name
<input type="radio"/> BFEET	NUMERIC(3)	Length in feet
<input type="radio"/> BYEAR	NUMERIC(4)	Year built
<input type="radio"/> BCOST	NUMERIC(9)	Price in US\$
<input type="radio"/> BNT01	CHAR(72)	Note 1
<input type="radio"/> BNT02	CHAR(72)	Note 2
<input type="radio"/> BNT03	CHAR(72)	Note 3

- The SQL wizard allows you to choose the operator to use in the condition
- The condition shows up both in the SQL statement and in a condition list. You may edit or delete the condition.
- You may also add additional conditions.



- The SQL wizard allows you to choose if the condition value is specified in the request, or is prompted for when the request is run.
- Static or Dynamic



The SQL wizard allows you to specify the value for the condition.

The value can be:

- Constant or
- Other specific function

Can find values in table

- The statement is now complete.
- Click the Finish button (not shown) on the bottom of the SQL Wizard page to return to Run SQL
- The SELECT statement you generated is available for use in Run SQL

After creating a statement (by hand or with the SQL Wizard) you have the option to save it for later use

Can Run it now

Or

Run it later from "My Requests"

Select to prompt for values when the request is run

- Choose a comparison operator just like we did in the static query example

- Select how the user will be prompted for the values

- Setting Initial Value that Boats can cost equal to or less than \$3,000,000

- Adding Text to explain to user what to enter in this column

- User can then change value

- Let's add another condition to this Dynamic SQL Request

My Home Page

My Folder

Print

Messages

Jobs

5250

Database

- Tables
- My requests
- Run SQL
- Copy data to table
- Import request
- Import query
- Extract i5/OS data

Files

Command

Download

Customize

Other

SQL Wizard

```
SELECT
  "BCOST", "BTTYPE", "BNAME", "BFREET", "BYEAR"
FROM
  SOATS.BOATS
WHERE
  ( "BCOST" <= ? )
```

Condition

Action	Condition	Prompt Label	Prompt Text	Prompt Option
<input checked="" type="checkbox"/>	("BCOST" <= ?)	Boat Cost Upper Limit	Enter value	

To add a condition, click Add New Condition. To continue, click Next.

User selects

- Maximum cost of boat
- Type of Boat

My Home Page

My Folder

Print

Messages

Jobs

5250

Database

- Tables
- My requests
- Run SQL
- Copy data to table

Run SQL

Boat Cost Upper Limit

P=Powered S=Sailing exactly equal to:

The SQL Output was set up to show in Descending Order by Boat Cost

My Home Page

My Folder

Print

Messages

Jobs

5250

Database

- Tables
- My requests
- Run SQL
- Copy data to table
- Import request
- Import query
- Extract i5/OS data

Files

Command

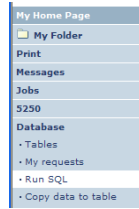
Download

Customize

SQL Output

BCOST	BTTYPE	BNAME	BFREET	BYEAR
450000	S	Merlin's Magic	54	1990
269500	S	Seafinn 411 Motorsailer Ketch	41	1989
179500	S	Fontaine Pajot Antigua	37	1993
179000	S	Nauticat 40	40	1989
159900	S	Shannon 50 ketch	50	1981
149000	S	Brandlmayr 48	48	1985
80000	S	Garden Design Porpoise Ketch	51	1974
69950	S	Corsair 27	27	1994
69000	S	Morgan 382 Race/Cruise Sloop	38	1978
63000	S	Mariner Ketch	40	1979
57900	S	Hunter 33.5	33	1990
27500	S	Bill Garden Schooner	36	1953

- Dynamic queries generated by the wizard can only be modified using the wizard
- If you wish to create your own you will need to manually add parameter markers directly into the SQL statements and create your own web page to prompt for the values



SQL Wizard completed successfully.

Note: Use the SQL wizard to make additional updates to the SQL statement. If updates are made outside the wizard, the SQL wizard can no longer be used with the updated statement. Also, all prompt information is lost and the request might not run successfully.

[Continue](#)



Edit SQL Request

SQL Statement

```
SELECT
  "BCOST", "BTYPE", "BNAME", "BFEET", "BYEAR"
FROM
  BOATS.BOATS
WHERE
  ("BCOST" <= ?) AND
```

[SQL Wizard](#)

SQL Output

Type: [Preview](#) [Settings](#)

Destination: [Browser](#) [Settings](#)

Format

Date: 3/4/08

Time: 1:42:06 PM

Connection

Connection: IBM Toolbox for Java - .IBM.COM

[Run SQL](#) [Save Request...](#)

Choose from 4 different output destinations:

- Browser
- Email
- Personal folder
- Integrated File System

Run SQL

SQL Statement

[SQL Wizard](#)

SQL Output

Type: [Preview](#) [Settings](#)

Destination: [Browser](#) [Settings](#)

Format

Date: 3/4/08

Time: 1:45:38 PM

Connection

Connection: IBM Toolbox for Java - .IBM.COM

[Run SQL](#) [Save Request...](#)

Power Systems IBM

SQL Output - Browser

The SQL statement is built indicating that Output Type is Microsoft Excel.

Run SQL

SQL Statement
SELECT * FROM QIWS.QCUSTCDT

SQL Output
Type: Microsoft Excel 4 (.xls) Settings
Destination: Browser Settings

Format
Date: 3/4/08
Time: 1:45:38 PM

Connection
Connection: IBM Toolbox for Java - .IBM.COM

Run SQL Save Request...

My Home Page
My Folder
Print
Messages
Jobs
5250
Database
Tables
My requests
Run SQL
Copy data to table
Import request
Import query
Extract IS/OS data
Files
Command
Download
Customize
Other

Related Links
System i Access for Web

A1	A	B	C	D	E	F	G	H	I	J	K	L
	CUSNUM	STNAM	INT	STREET	CITY	STATE	ZIPCOD	COTLMT	CHGCCOD	BALDUE	COTDUE	
1												
2	838472	Herring	G K	4859 Elm	Dallas	TX	75217	5000	3	37	0	
3	839283	Jones	B D	249 NW 1	Clay	NY	13641	400	1	100	0	
4	302650	Vine	S S	400 River	Wethers	VT	5646	700	1	439	0	
5	938448	Johnson	J A	3 Alpine	Vi Helen	GA	30545	9999	2	3987	5	33.5
6	393287	Tyson	W E	13 Maple	Hector	NY	14841	1000	1	0	0	
7	389572	Stevens	K L	208 Snow	Denver	CO	80226	400	1	58	75	1.5
8	846203	Alison	J S	787 Lake	Isle	MN	56342	5000	3	10	0	
9	475938	Doer	J W	59 Archer	Sutter	CA	95685	700	2	250	100	
10	893829	Thomas	A N	3 Dove	Ch/Casper	WY	82609	9999	2	0	0	
11	593029	Williams	E D	485 1st	2 Dallas	TX	75218	200	1	25	0	
12	192837	Lee	F L	5963 Oak	Hector	NY	14841	700	2	489	5	0.5
13	883990	Abraham	M T	392 Mill	Stlele	MN	56342	9999	3	500	0	
14												

© 2014 International Business Machines Corporation

Browser sees the .xls format type, starts Excel or viewer, and displays the results

Power Systems IBM

SQL Output – Destination Email

The SQL statement is built indicating that:

- Output Type is PDF
- Destination is Email

Run SQL Request

From: dymie@us.ibm.com

To:

Cc:

Bcc:

Subject:

Attachment: sqlOutput.pdf

Run Cancel

Run SQL

SQL Statement
SELECT * FROM QIWS.QCUSTCDT

SQL Output
Type: Portable Document Format (.pdf) Settings
Destination: Mail as attachment Settings

Format
Date: 3/4/08
Time: 1:45:38 PM

Connection
Connection: IBM Toolbox for Java - .IBM.COM

Run SQL Save Request...

Access for Web converts SQL output to .PDF and attaches it to an email.

Note: my email address has been filled in from properties

© 2014 International Business Machines Corporation

The SQL statement is built indicating that:

- Output Type is HTML
- Destination is My Folder
- Click on My Folder link
- Select SQL Output
- Shown to me in HTML

MYLSTNAM	MYCITY	MYSTATE
Henning	Dallas	TX
Jones	Clay	NY
Vine	Broton	VT
Tyron	Hector	NY
Stevens	Denver	CO
Alison	Isle	MN
Doe	Sutler	CA
Thomas	Casper	WY
Williams	Dallas	TX
Lee	Hector	NY
Abraham	Isle	MN

The SQL statement is built indicating that:

1. Output Type is HTML
2. Destination is Integrated File System
3. Next screen select '/JHANSEN' directory
4. Click on 'Files' tab
5. Open JHANSEN directory
6. Click on file name
7. Results shown in HTML

MYLSTNAM	MYCITY	MYSTATE
Henning	Dallas	TX
Jones	Clay	NY
Vine	Broton	VT
Tyron	Hector	NY
Stevens	Denver	CO
Alison	Isle	MN
Doe	Sutler	CA
Thomas	Casper	WY
Williams	Dallas	TX
Lee	Hector	NY
Abraham	Isle	MN

My Requests



Requests that are saved for an user to run again at any time.

Requests are saved by an user.

Or, an Administrator creates queries or upload requests for end users to run.

- Selected Users are then given access to run these selected data requests. These are called Shortcuts

My Home Page

My Folder

Print

S250

Database

- My requests

Files

Download

Related Links:

- System i Access for Web
- System i Access
- System i Navigator
- i5/OS Information

My Requests

Page 1 of 1 Jump to page: 1 Total: 5

Request	Description	Action	Shortcut	Owner	Access
Shortcut to Boats for Sale	View all available boats		Yes	jhansen	stymie
Shortcut to Find Boat to Buy	Select type and price limites		Yes	jhansen	*PUBLIC
Shortcut to My Customer Mailing	Mail customer list		Yes	jhansen	stymie
Shortcut to My Customer Mailing	Mail customer list		Yes	jhansen	*PUBLIC
Shortcut to Put My Customer List in Folder	Store customer list		Yes	jhansen	stymie

Page 1 of 1 Jump to page: 1 Total: 5

Run a pre-built query or upload

- Example is a Query that is set up to display up to 500 entries

This query could be set up to:

- Be viewed in the browser
- Converted to a spreadsheet format, HTML, plain text....
- Converted to .PDF
- Saved in IFS or Personal Folder

My Home Page

My Folder

Print

Messages

Jobs

5250

Database

Tables

My requests

Run SQL

Copy data to table

Import request

Import query

Extract I5/OS data

Files

Command

Download

Customize

Other

Related Links:

System i Access for Web

System i Access

System i Navigator

I5/OS Information Center

System i Resource Center

SQL Output

Page 1 of 1 Jump to page: 1 Total: 24

BCOST	BYEAR	BTYPE	BNAME	BFEET	BNT01
10000000	1940	A	Hanger	28	
1000000000	2000	A	Spandau1	72	
1000000000	1999	A	MOLSLN1EN	300	
1000000000	1999	A	Spandau	720	
1000000000	1995	P	Katemaran	200	
2973000	1996	P	Merlesey Marine Custom	80	-Located in Stuart, FL
10000000	1979	C	Peple Boat Co Aluminum	80	-Located in S. Diego, CA
4500000	1990	S	Merlin's Magic	54	-Designed by Dutch naval architect Ernst West-Dorbin.
2695000	1989	S	Seafinn 411	41	-Silver anodised spars by Selden of Sweden. Main and
2490000	1944	T	Miki Miki Original Tug	126	-Located in Seattle, WA.
1795000	1993	S	Fountainre Pajot Antique	37	-Fiberglass hull and deck with a vacuum legged core.
1790000	1989	S	Nauticat 40	40	-All hand laminated fiberglass control layers of mat.
1599000	1981	S	Shannon 50 ketch	50	-Walter Shutz design ketch built by Shannon Boat Co. Inc.
1490000	1985	S	Brandimayr 48	48	-An 8" aluminum extrusion, oval mast and 3/8" galvanized.
800000	1974	S	Garden Design Porpoise Ketch	51	-The hull is savel planked teak.
699500	1994	S	Capeaz 27	27	-Equipped for cruising and racing.
69000	1978	S	Morgan 382	38	-Has an Airex hull and slop rudder. Has been read by Lloyd's
63000	1979	S	Mariner Ketch	40	-Full keel and the rudder is keel hung
57900	1990	S	Hunter 33.5	33	-The boat has a large wheel steering & spade rudder.
55000	1985	P	Monk Flybridge/Sedan	34	-Double planked cedar on oak frames.
27500	1953	S	Bill Garden Schooner	36	-The hull is 1/8" carvel oak planked stop 1 1/4" x 1 1/2" oak frames
23900	1978	P	Carver Santa Cruz	28	-Constructed of fiberglass.
13900	1956	P	Monk Bridgdeck	36	-Built of mahogany oak, and cedar.
13000	1989	P	Relic Sportfisher	19	-Located in Anacortes, WA.

Page 1 of 1 Jump to page: 1 Total: 24

Example has conditions the end user can set:

1. Type of boat (Power, Sailing, etc)
2. Price limits (lower / upper)

My Home Page

My Folder

Print

Messages

Jobs

5250

Database

Tables

My requests

Find Boat

Select Boat Type

P
A
C
P
S
T

in US\$ greater than or equal to:

in US\$ less than or equal to:

OK Cancel

Query brings back only database entries meeting conditions

My Home Page

My Folder

Print

Messages

Jobs

5250

Database

Tables

My requests

Run SQL

SQL Output

Page 1 of 1 Jump to page: 1 Total: 2

BCOST	BYEAR	BTYPE	BNAME	BFEET	BNT01
23900	1978	P	Carver Santa Cruz	28	-Constructed of fiberglass.
55000	1985	P	Monk Flybridge/Sedan	34	-Double planked cedar on oak frames.

Page 1 of 1 Jump to page: 1 Total: 2

- Save Access for Web requests to a file
 - Move requests to another system
 - myDBRequests.requests
- Only requests can be exported
 - Shortcuts can not be export
- Connection information is not exported with the request
 - Same connections may not be available when importing

My Requests

Request ID	Description	Action	Shortcut	Owner	Access
Boats for Less Than \$1,000,000	View all available boats	[Icons]	No	Person	Person
Boats for Sale	View all available boats	[Icons]	No	Person	Person
customers	Dynamic query example	[Icons]	No	Person	Person
Find a Boat	Select type and price limits	[Icons]	No	Person	Person
Find Boat to Buy	Select type and price limits	[Icons]	No	Person	Person
My Customer Mailing	Mail customer list	[Icons]	No	Person	Person
Put My Customer List in Folder	Store customer list	[Icons]	No	Person	Person
Shortcut to Find Boat to Buy	Select type and price limits	[Icons]	Yes	Person	*PUBLIC
Shortcut to My Customer Mailing	Mail customer list	[Icons]	Yes	Person	*PUBLIC
SQL PUBLIC	SQL PUBLIC	[Icons]	Yes	Public	*PUBLIC

Related Links:

- System Access for Web
- System Access
- System Navigator
- SQL Information
- System Resource Center

Export Database Requests

Export requests from System Access for Data.

Export Database Requests

Select requests to export.

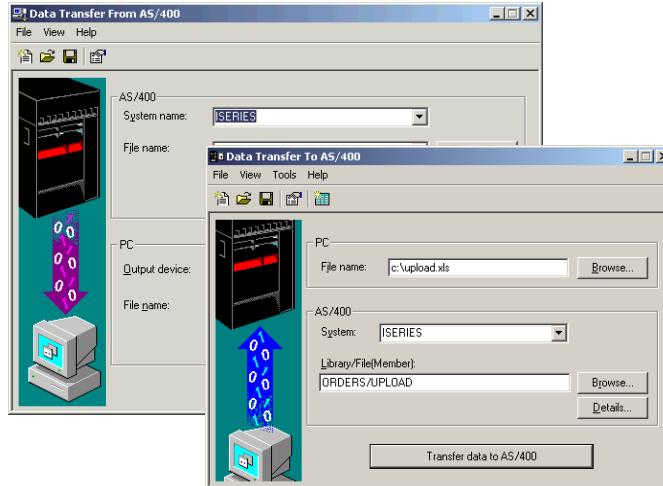
Select	Request	Description
<input checked="" type="checkbox"/>	customers	
<input type="checkbox"/>	Boats for Sale	View all available boats
<input type="checkbox"/>	Find Boat to Buy	Select type and price limits
<input checked="" type="checkbox"/>	My Customer Mailing	Mail customer list
<input checked="" type="checkbox"/>	Put My Customer List in Folder	Store customer list
<input type="checkbox"/>	Boats for Less Than \$1,000,000	
<input type="checkbox"/>	Find a Boat	Dynamic query example

Export Requests Select All Deselect All

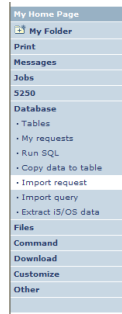
Import Requests & Queries



Import your existing Access for Windows Data Transfer requests into Access for Web!



- Don't lose your investment in existing Data Transfer requests
- **Import** them into Access for Web
- The imported transfer request may be run or saved as an Access for Web request
- Then users can run them from their browsers!
- Data Transfer to IBM i requests are imported into a Copy Data to Table request format
- Data Transfer from IBM i requests are imported into a Run SQL format



Import Client Access Data Transfer Request

Specify the Client Access Data Transfer request you want to import. The request will be converted to an System i Access for Web request.

Note: The converted System i Access for Web request could work differently than the Client Access request. Verifying the converted request is strongly recommended.

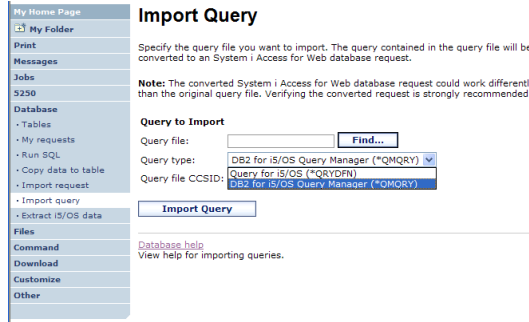
Request to Import

Client Access request:

Character set:

[Database help](#)
View help for importing Data Transfer requests.

- Bring your existing queries to a browser environment
- Use the **Import Query** tool to bring them into Access for Web
 - IBM Query for i5/OS (5761-QU1)
 - DB2 for i5/OS Query Manager (5761-ST1)



****QMQR* and *QRYDFN
are the query file types supported***

Tables



My Home Page
My Folder
Print
Messages
Jobs
5250
Database
Tables
My requests
Run SQL
Copy data to table
Import request
Import query
Extract I5/OS data

Tables
Connection: IBM Toolbox for Java - .IBM.COM
Table filter: *USRLIBL, BOATS

Page 1 of 11 | Jump to page: 1 | Total: 262

Table	Description	Action
BOATS.BOATS	Available BOATS	[Icons]
BOATS.BOATS1	Available boats by length	[Icons]
BOATS.PCFILES	PC files needed by BOATS WSG Demo	[Icons]
BOATS.QCLSRC		[Icons]
BOATS.QCMDSRC		[Icons]

- Insert
- Update
- Quick View
- Find Record
- Run SQL
- Copy Data to Table

Action ?

My Home Page
My Folder
Print
Messages
Jobs
5250
Database
Tables
My requests
Run SQL
Copy data to table
Import request
Import query
Extract I5/OS data
Files
Command
Download
Customize
Other
Related Links:
System i Access for Web
System i Access
System i Navigator
I5/OS Information Center
System i Resource Center

Tables
Connection: IBM Toolbox for Java - .IBM.COM
Table filter: *USRLIBL, BOATS

Page 1 of 11 | Jump to page: 1 | Total: 262

Table	Description	Action
BOATS.BOATS	Available BOATS	[Icons]
BOATS.BOATS1	Available boats by length	[Icons]
BOATS.PCFILES	PC files needed by BOATS WSG Demo	[Icons]
BOATS.QCLSRC		[Icons]
BOATS.QCMDSRC		[Icons]
BOATS.QDDSSRC		[Icons]
BOATS.QRNCVTLG		[Icons]
BOATS.QRPGLESRC		[Icons]
BOATS.QRPGSRC		[Icons]
QBLDSYS.CBVTBATS	BVT test case file	[Icons]
QBLDSYS.CBVTQCRY	BVT test case file	[Icons]
QBLDSYS.CBVTDERI	BVT test case file	[Icons]
QBLDSYS.CBVTDLO	BVT test case file	[Icons]
QBLDSYS.CBVTFORM	BVT test case file	[Icons]
QBLDSYS.CBVTGRPD	BVT test case file	[Icons]
QBLDSYS.CBVTGRPS	BVT test case file	[Icons]
QBLDSYS.CBVTJOB	BVT test case file	[Icons]
QBLDSYS.CBVTJOIN	BVT test case file	[Icons]

Callouts:
- Connection & Table Filter (points to Connection and Table filter text)
- Table Actions (points to the Action column icons)

- If you don't want users 'updating', 'inserting' or 'deleting' records,
- then let them use only the **Find Record** function

My Home Page

My Folder

Print

Messages

Jobs

5250

Database

- Tables
- My requests
- Run SQL
- Copy data to table
- Import request
- Import query
- Extract i5/OS data

Find Record

Page 1 of 1 Jump to page: 1 Total: 2

Action	BTYPE	BNAME	BFEET	BYEAR	BCOST	BNT01	BNT02	BNT03	BNT04
<input type="checkbox"/>	C	Poole Boat Co Aluminum	80	1979	1000000	-Located in S. Diego, CA	-Twin Detroit diesels.	-Commercial combination dinner cruise	and long range fishing boat, sleeps 33.
<input type="checkbox"/>	P	Monterey Marine Custom	80	1996	2975000	-Located in Stuart, FL	-Monthly payment.	-Fuel: Approximately 2000 gallons	-Water: Approximately 300 gallons

Page 1 of 1 Jump to page: 1 Total: 2

My Home Page

My Folder

Print

Messages

Jobs

5250

Database

- Tables
- My requests
- Run SQL
- Copy data to table
- Import request
- Import query
- Extract i5/OS data

Select Records to Update 1

Specify column values, to select which records you want to update.

Column	Type	Value	Description
BTYPE	CHAR (1)	<input type="checkbox"/>	P=Powered S=Sailing
BNAME	CHAR (30)	<input type="text"/>	boat name
BFEET	NUMERIC (3,0)	<input type="text" value="80"/>	Length in feet
BYEAR	NUMERIC (4,0)	<input type="text"/>	Year built
BCOST	NUMERIC (9,0)	<input type="text"/>	Price in US\$

Wildcards may be used in the selection

Records to Update 2

Page 1 of 1 Jump to page: 1 Total: 2

Action	BTYPE	BNAME	BFEET	BYEAR	BCOST	BNT01	BNT02	BNT03	BNT04
<input checked="" type="checkbox"/>	C	Poole Boat Co Aluminum	80	1979	1000000	-Located in S. Diego, CA	-Twin Detroit diesels.	-Commercial combination dinner cruise	and long range fishing boat, sleeps 33.
<input checked="" type="checkbox"/>	P	Monterey Marine Custom	80	1996	2975000	-Located in Stuart, FL	-Monthly payment.	-Fuel: Approximately 2000 gallons	-Water: Approximately 300 gallons

Page 1 of 1 Jump to page: 1 Total: 2


Update Record 3

To update the record, change column values and click Update Record.

Column	Type	Value	Description
BTYPE	CHAR (1)	<input type="text" value="C"/>	P=Powered S=Sailing
BNAME	CHAR (30)	<input type="text" value="Poole Boat Co Aluminum"/>	boat name
BFEET	NUMERIC (3,0)	<input type="text" value="80"/>	Length in feet
BYEAR	NUMERIC (4,0)	<input type="text" value="1979"/>	Year built
BCOST	NUMERIC (9,0)	<input type="text" value="1000000"/>	Price in US\$
BNT01	CHAR (72)	<input type="text" value="-Located in S. Diego, CA"/>	Note 1
BNT02	CHAR (72)	<input type="text" value="-Twin Detroit diesels."/>	Note 2

My Home Page
My Folder
Print
Messages
Jobs
5250
Database
• Tables
• My requests
• Run SQL
• Copy data to table
• Import request
• Import query
• Extract i5/OS data
Files

Insert Record

To insert a record, specify column values and click Insert Record. 

Column	Type	Value	Description
BTYPE	CHAR (1)	<input type="checkbox"/>	P=Powered S=Sailing
BNAME	CHAR (30)	<input type="text"/>	boat name
BFEET	NUMERIC (3,0)	<input type="text" value="0"/>	Length in feet
BYEAR	NUMERIC (4,0)	<input type="text" value="0"/>	Year built
BCOST	NUMERIC (9,0)	<input type="text" value="0"/>	Price in US\$
BNT01	CHAR (72)	<input type="text"/>	Note 1
BNT02	CHAR (72)	<input type="text"/>	Note 2
BNT03	CHAR (72)	<input type="text"/>	Note 3

- Access for Web Database:
 - Copy client data to IBM i Table
 - Run SQL statements
 - Create SQL Query Wizard
 - Import Requests and Queries
 - Work with IBM i Database Tables

Controlling Access: Policies and Preferences

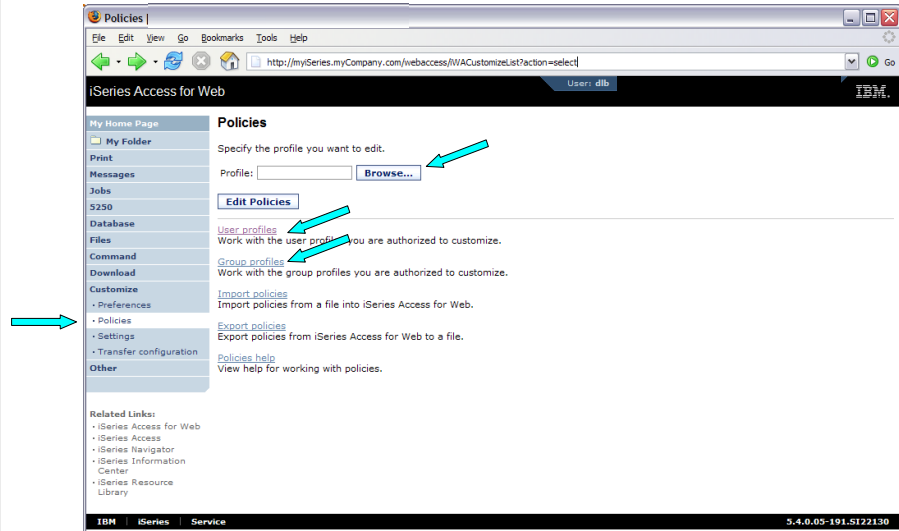


© 2014 International Business Machines Corporation

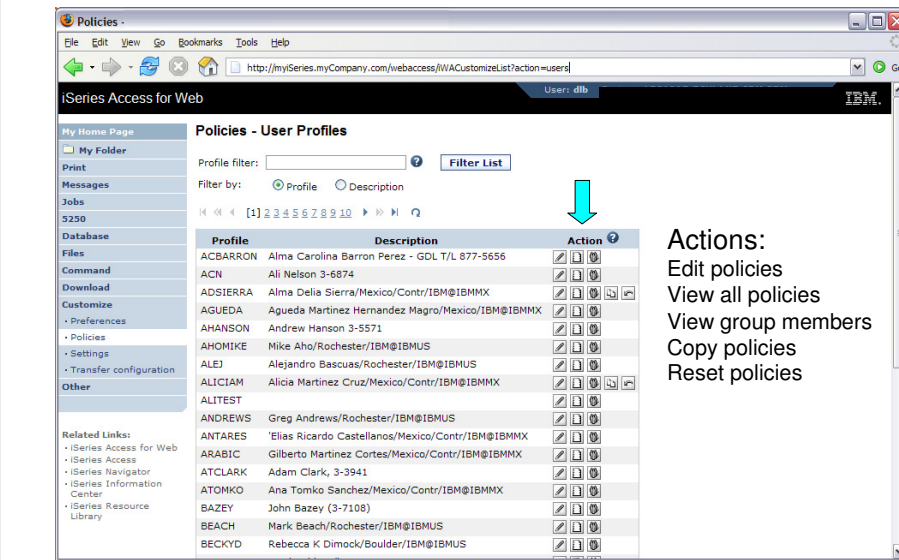
Controlling Access

- The Customize function allows administrators to set policies for users and groups of users.
- These policies control...
 - Functions a user can perform.
 - How certain information is presented to the user.
- When a function is restricted...
 - Its navigation bar content is removed.
 - Access to the servlet is restricted.
 - It takes effect immediately.
- Administrators with *SECADM special authority are automatically authorized to administer settings for users and groups of users to which they have authority.
- These administrators can then grant other user profiles permission to administer IBM i Access for Web functions.
- IBM i Access for Web ships with default policy settings
- Default allows most functions to be available to all users
- Use *PUBLIC to set policies for all users
- Strategy:
 - Grant an administrator profile access to all functions
 - Deny access to all functions to *PUBLIC
 - Then allow specific users/groups access to specific functions

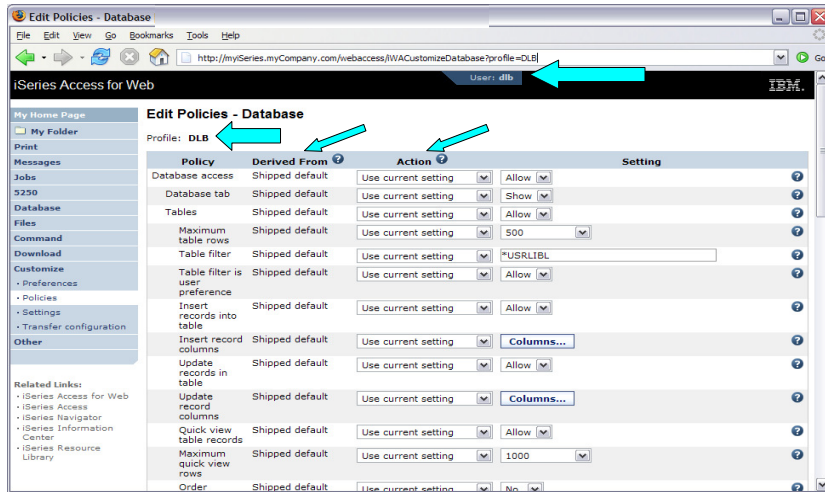
© 2014 International Business Machines Corporation



© 2014 International Business Machines Corporation



© 2014 International Business Machines Corporation



Administrator Action on each policy setting

Action	Description
Use current setting	This is the default action that is pre-selected. If the setting is not modified, no action is performed. If the setting is modified, it will be added to the user or group profile record in the System i Access for Web policies file.
Apply setting to profile	Select this action to add the current setting to the user or group profile record in the IBM i Access for Web policies file. The setting will be written to the user or group profile record, even if it was not modified. You would use this action to ensure the user or group profile gets this setting. This is because a different policy setting may be used based on the user profile being a member of one or more IBM i group profiles.
Reset to default	Select this action to remove the setting from the user or group profile record in the IBM i Access for Web policies file. This option is only available if the user or group profile record currently contains a specific setting for this policy.

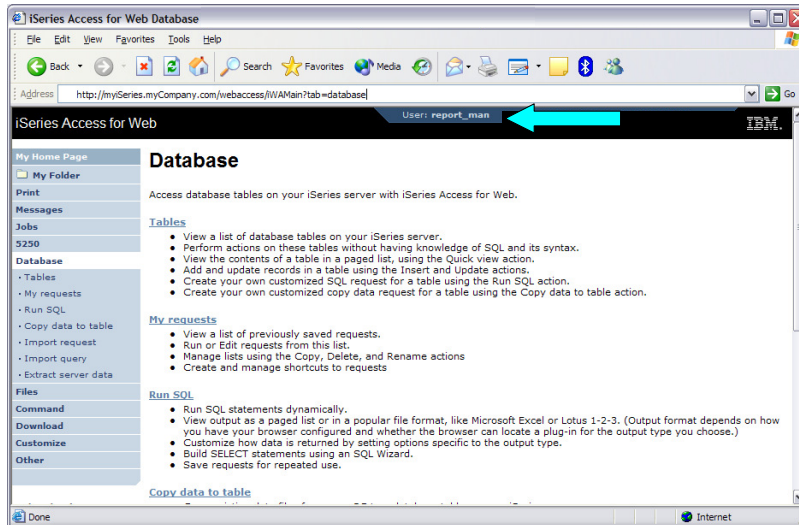
The "Derived From" column indicates where the policy setting that will be used for this user profile was found.

Action	Description
Profile setting	Indicates the setting is currently specific to the profile being customized. The setting had previously been applied to this profile.
Group – (groupName)	Indicates the setting is not specific to the profile being customized, but is being derived from the specified IBM i group profile and the user is a member of this group.
*PUBLIC setting	Indicates the setting is not specific to the profile being customized. No setting was found in any IBM i group profile memberships. The setting is being derived from the *PUBLIC group settings. This is a special group profile available to IBM i Access for Web administrators. All user profiles are automatically members of this special group profile. Administrators can modify this group profile to easily apply settings to all IBM i Access for Web users.
Shipped default	Indicates the setting is not specific to the profile being customized, no setting was found in any IBM i group profile memberships, or the special *PUBLIC group profile. The setting is being derived from a shipped default value.
Parent policy	Indicates the function is a sub-function of a higher level category, and its policy setting is being controlled by a top level policy setting. For example, Tables is a sub-function of Database. If Database is restricted, Tables will be restricted as well and would show its being controlled by a parent policy.

© 2014 International Business Machines Corporation

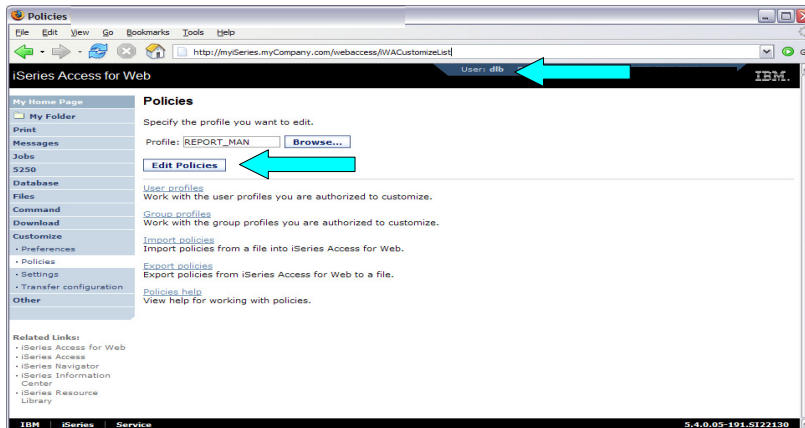
- The following screen shots step through setting the policies so a specific user only has the ability to run preconfigured database queries to generate reports.
- This example shows
 - the "Before" picture of what DB functions a user can perform with no customization of IBM i Access for Web
 - the specific database policies to set to restrict our user named REPORT_MAN
 - what general policies need to be set to restrict use of non-DB related functions by REPORT_MAN
 - The "After" picture of what REPORT_MAN can do
- When the policy is set, it takes effect immediately.

Accessing the Database tab of IBM i Access for Web as user REPORT_MAN



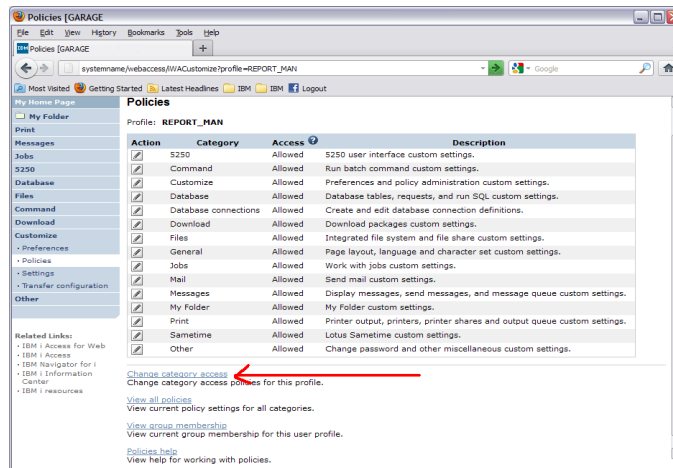
© 2014 International Business Machines Corporation

- Policies - the starting point for customization of a specific user or group.
- This is a new browser session, where we signed on as an administrator.

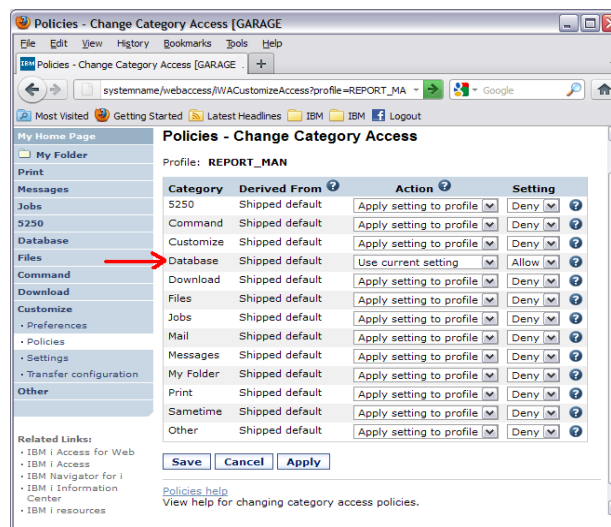


© 2014 International Business Machines Corporation

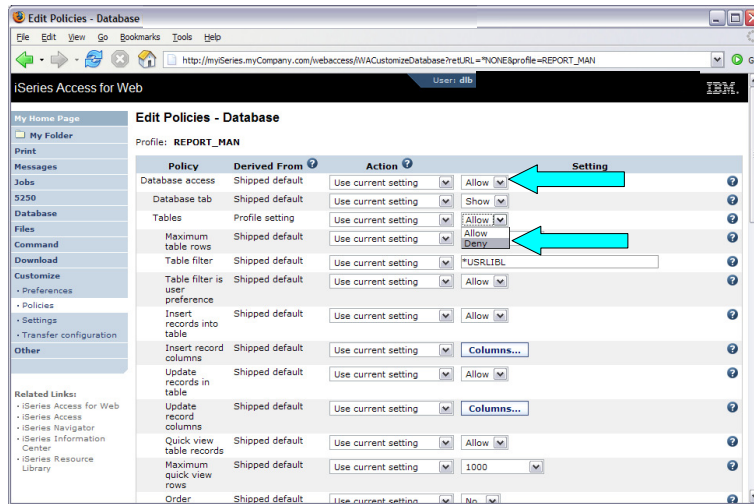
- Change Category Access



- Turn off all non-Database functions by Applying setting of Deny to Profile
- Leave Database to Allow

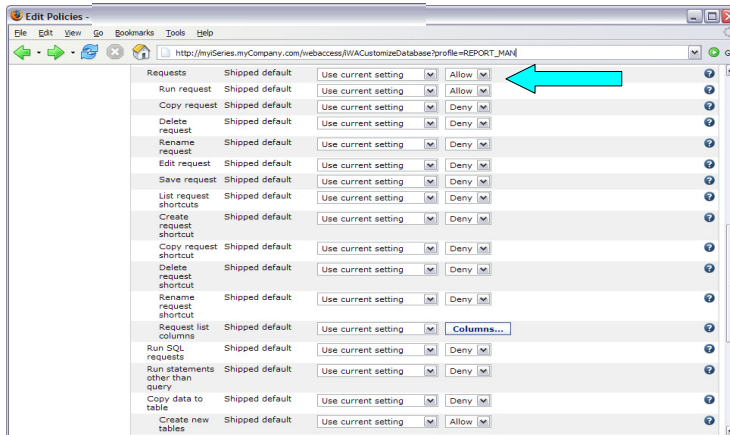


- Allow access to Database function.
- Set Tables policy to Deny.



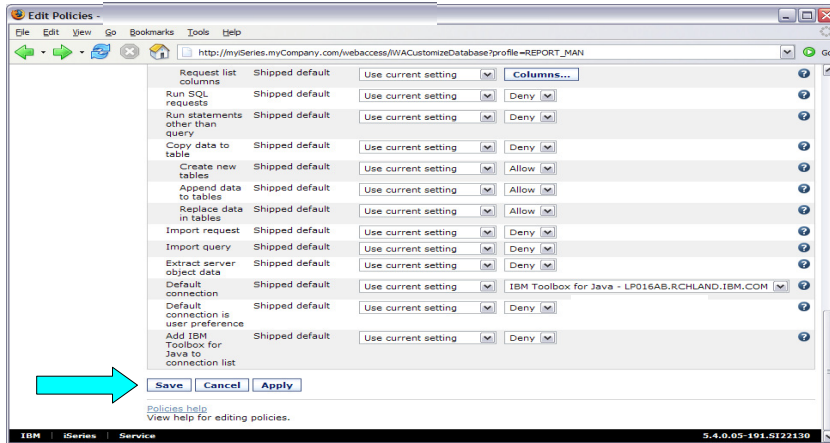
© 2014 International Business Machines Corporation

- Only allow the user the ability to run a saved DB request (Run request)



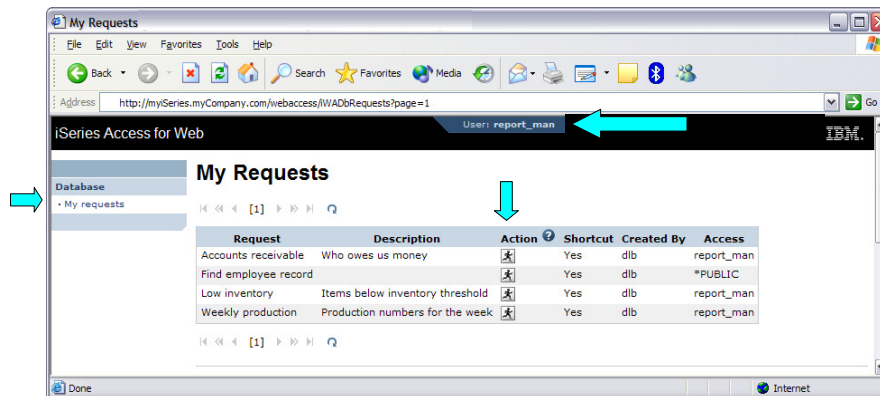
© 2014 International Business Machines Corporation

- Turn off the ability to perform the remaining database functions
- Save the changes



© 2014 International Business Machines Corporation

- The user can now only run the DB queries they have been given.



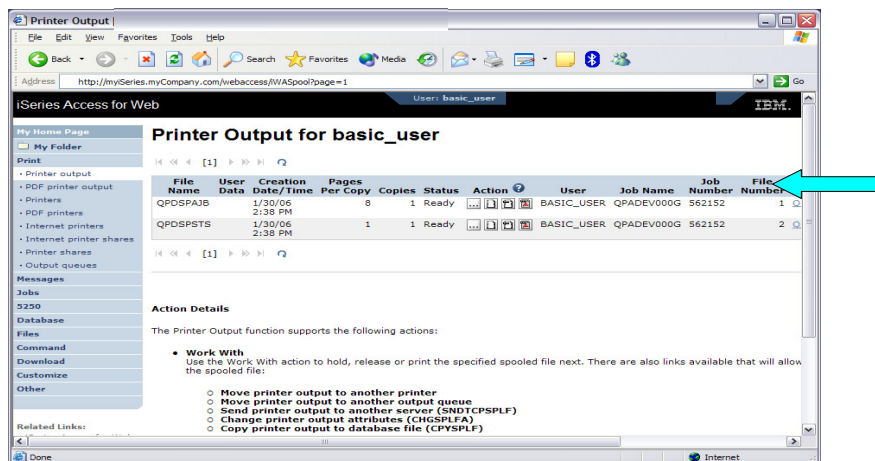
© 2014 International Business Machines Corporation

- The Preferences function allows users to customize IBM i Access for Web settings to meet their needs.
- By default, all users are allowed to modify their preferences.
- Preferences are a subset of the complete list of available policy settings.
- Users can set the following types of preferences
 - Column inclusion and ordering for functions that display output in columns.
 - Number of rows per page to display on output.
 - Show or hide navigation bar tabs.
 - Preferred language and character set.
 - Database table filters and default database connection.
 - Number of commands to save in the run command history.

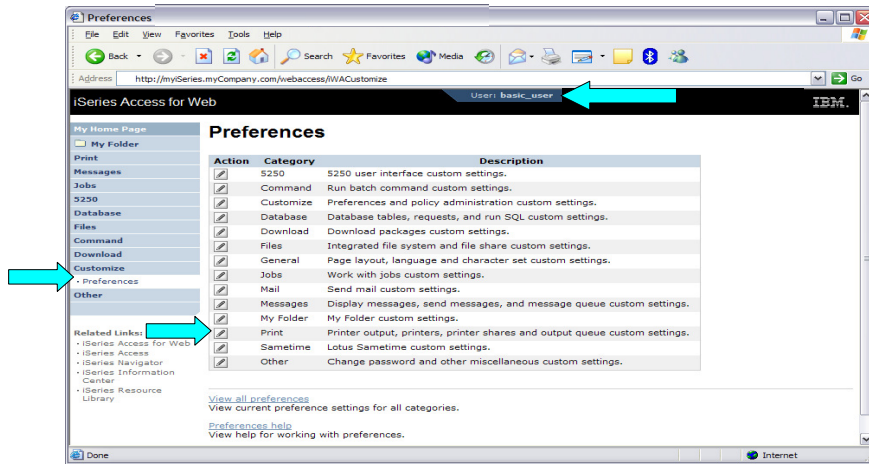
- Restricting access to Preferences
 - Administrators can deny specific users or groups from accessing their preferences.
 - This is controlled by the "Edit preferences" policy.
 - This policy is useful in organizations where administrators want to set up all customization options for users and ensure users are not able to modify any preference settings.

- The following screen shots step through setting a user preference for Printer output.
- This example shows
 - the default printer output page for user BASIC_USER.
 - what settings the user can modify to change the printer output page output.
 - the printer output page after user BASIC_USER modifies the preferences.
- When the preference is set, it takes effect immediately.

- The printer output display defaults with many columns of information.

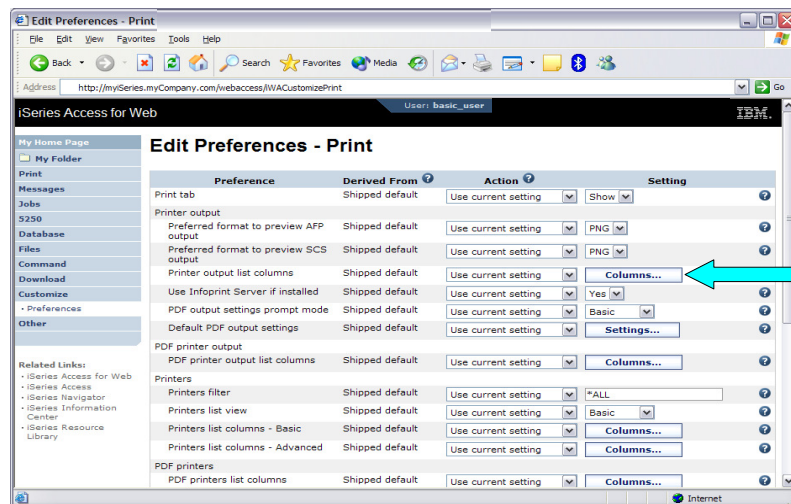


- Click on the Customize tab to work with Preferences.



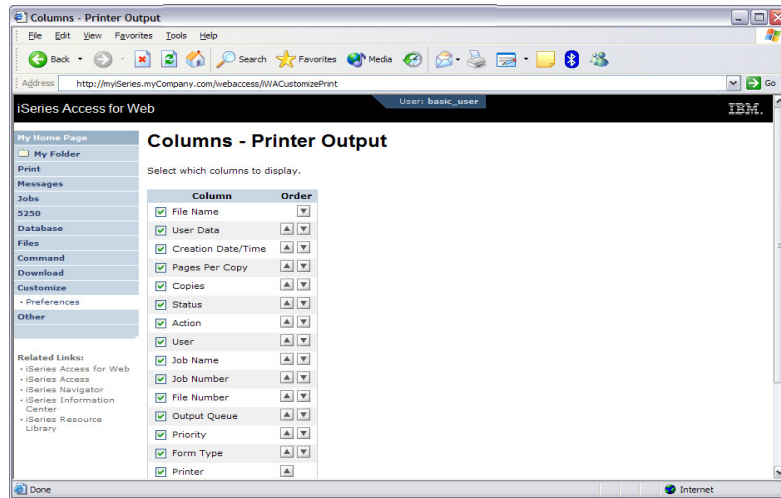
© 2014 International Business Machines Corporation

- Click on the Print category.
- Click on the Columns button for the "Printer output list columns" Preference.



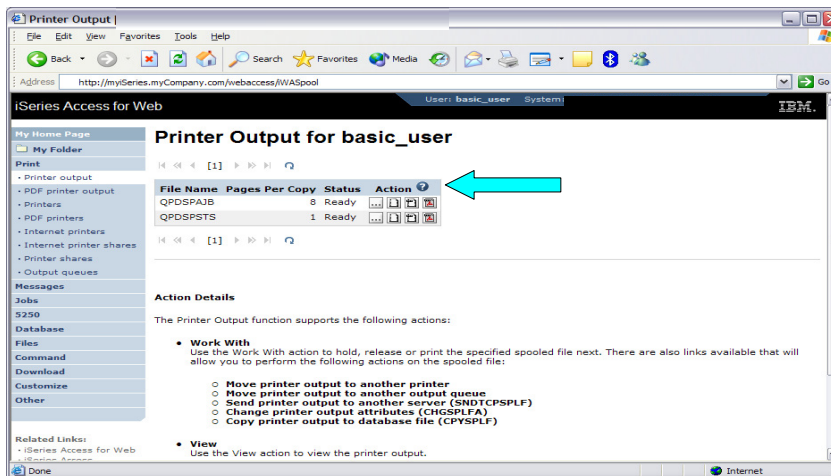
© 2014 International Business Machines Corporation

- The Columns displayed can be toggled off/on by checking the box.
- Click OK and Save buttons to immediately save the changes.



© 2014 International Business Machines Corporation

- The printer output display now only has a few columns.



© 2014 International Business Machines Corporation

Tips

- This example showed that a user can modify their printer output view. An administrator can:
 - Restrict the user's access to the Preferences interface.
 - Perform the same changes by setting policies for the user, or a group of users.
- The Preferences interface that the user has access to is only a subset of all the policy settings an administrator can access for the same function.

- Access for Web Overview
- Access for Web Print Capabilities
- Access for Web Database Capabilities
- Controlling Access

Start your browser and connect to the following web site:
<http://iseriesd.dfw.ibm.com/webaccess/IWAHome> (case sensitive)

<p>User ID = WACUST</p> <p>Password = demo2pwd</p>	<p>This shows the basic look of System i Access for Web as we ship it. You can try various functions -- including working with printer output, creating database requests, etc. Click on the 5250 tab, sign onto the IBM i, then start an RPG application called BOATS and run it.</p>
<p>User ID = BOATADMIN</p> <p>Password = demo2pwd</p>	<p>This is an example of how a customer might design a web page for their use. You will see that an end user could start the same BOATS application by clicking on the 5250 session, or they could have used HATS to run the application. You will also see other links that would let a user work with spoolfile information, work with IFS, run database requests, etc..</p>

Send email to: stymie@us.ibm.com to reset the user profiles on iseriesd.dfw.ibm.com if either one gets disabled.
 © 2014 International Business Machines Corporation

Monday			
8:00am	S. China Sea	OPEN LAB: Test Drive IBM i Access for Web OPEN LAB: Meet the New IBM i Access	420063 580085
9:30am	S. China Sea	OPEN LAB: Test Drive IBM i Access for Web OPEN LAB: Meet the New IBM i Access	420063 580085
2:00pm	Pacifica Ballroom 10	The Next Generation of IBM i Access	580083
5:00pm	Pacifica Ballroom 10	IBM i Access for Web Including 5250 Browser Access	409136
Tuesday			
8:00am	Pacifica Ballroom 1-2	IBM i Mobile Access	590448
2:00pm	Banda Sea 1	IBM i Access 5250 Emulation	590257
3:30pm	Banda Sea 1	Not just a 'Webulator': IBM i Access for Web Leveraging Print and Database Capabilities	580029
Wednesday			
8:00am	Pacifica Ballroom 11	IBM i Access Deployment and Migration	590256
5:00pm	Banda Sea 1	IBM i Access Data Transfer	590258



Special notices

This document was developed for IBM offerings in the United States as of the date of publication. IBM may not make these offerings available in other countries, and the information is subject to change without notice. Consult your local IBM business contact for information on the IBM offerings available in your area.

Information in this document concerning non-IBM products was obtained from the suppliers of these products or other public sources. Questions on the capabilities of non-IBM products should be addressed to the suppliers of those products.

IBM may have patents or pending patent applications covering subject matter in this document. The furnishing of this document does not give you any license to these patents. Send license inquiries, in writing, to IBM Director of Licensing, IBM Corporation, New Castle Drive, Armonk, NY 10504-1785 USA.

All statements regarding IBM future direction and intent are subject to change or withdrawal without notice, and represent goals and objectives only.

The information contained in this document has not been submitted to any formal IBM test and is provided "AS IS" with no warranties or guarantees either expressed or implied.

All examples cited or described in this document are presented as illustrations of the manner in which some IBM products can be used and the results that may be achieved. Actual environmental costs and performance characteristics will vary depending on individual client configurations and conditions.

IBM Global Financing offerings are provided through IBM Credit Corporation in the United States and other IBM subsidiaries and divisions worldwide to qualified commercial and government clients. Rates are based on a client's credit rating, financing terms, offering type, equipment type and options, and may vary by country. Other restrictions may apply. Rates and offerings are subject to change, extension or withdrawal without notice.

IBM is not responsible for printing errors in this document that result in pricing or information inaccuracies.

All prices shown are IBM's United States suggested list prices and are subject to change without notice; reseller prices may vary.

IBM hardware products are manufactured from new parts, or new and serviceable used parts. Regardless, our warranty terms apply.

Any performance data contained in this document was determined in a controlled environment. Actual results may vary significantly and are dependent on many factors including system hardware configuration and software design and configuration. Some measurements quoted in this document may have been made on development-level systems. There is no guarantee these measurements will be the same on generally-available systems. Some measurements quoted in this document may have been estimated through extrapolation. Users of this document should verify the applicable data for their specific environment.

Special notices (cont.)

IBM, the IBM logo, ibm.com AIX, AIX (logo), AIX 6 (logo), AS/400, BladeCenter, Blue Gene, ClusterProven, DB2, ESCON, i5/OS, i5/OS (logo), IBM Business Partner (logo), IntelliStation, LoadLeveler, Lotus, Lotus Notes, Notes, Operating System/400, OS/400, PartnerLink, PartnerWorld, PowerPC, pSeries, Rational, RISC System/6000, RS/6000, THINK, Tivoli, Tivoli (logo), Tivoli Management Environment, WebSphere, xSeries, z/OS, zSeries, AIX 5L, Chiphopper, Chipkill, Cloudscape, DB2 Universal Database, DS4000, DS6000, DS8000, EnergyScale, Enterprise Workload Manager, General Purpose File System, GPFS, HACMP, HACMP/6000, HASM, IBM Systems Director Active Energy Manager, iSeries, Micro-Partitioning, POWER, PowerExecutive, PowerVM, PowerVM (logo), PowerHA, Power Architecture, Power Everywhere, Power Family, POWER Hypervisor, Power Systems, Power Systems (logo), Power Systems Software, Power Systems Software (logo), POWER2, POWER3, POWER4, POWER4+, POWER5, POWER5+, POWER6, POWER6+, System i, System p, System p5, System Storage, System z, Tivoli Enterprise, TME 10, Workload Partitions Manager and X-Architecture are trademarks or registered trademarks of International Business Machines Corporation in the United States, other countries, or both. If these and other IBM trademarked terms are marked on their first occurrence in this information with a trademark symbol (® or ™), these symbols indicate U.S. registered or common law trademarks owned by IBM at the time this information was published. Such trademarks may also be registered or common law trademarks in other countries. A current list of IBM trademarks is available on the Web at "Copyright and trademark information" at www.ibm.com/legal/copytrade.shtml

The Power Architecture and Power.org wordmarks and the Power and Power.org logos and related marks are trademarks and service marks licensed by Power.org.

UNIX is a registered trademark of The Open Group in the United States, other countries or both.

Linux is a registered trademark of Linus Torvalds in the United States, other countries or both.

Microsoft, Windows and the Windows logo are registered trademarks of Microsoft Corporation in the United States, other countries or both.

Intel, Itanium, Pentium are registered trademarks and Xeon is a trademark of Intel Corporation or its subsidiaries in the United States, other countries or both.

AMD Opteron is a trademark of Advanced Micro Devices, Inc.

Java and all Java-based trademarks and logos are trademarks of Sun Microsystems, Inc. in the United States, other countries or both.

TPC-C and TPC-H are trademarks of the Transaction Performance Processing Council (TPPC).

SPECint, SPECip, SPECjbb, SPECweb, SPECAppServer, SPEC OMP, SPECviewperf, SPECcapc, SPECchpc, SPECjvm, SPECmail, SPECimap and SPECsts are trademarks of the Standard Performance Evaluation Corp (SPEC).

NetBench is a registered trademark of Ziff Davis Media in the United States, other countries or both.

Altivec is a trademark of Freescale Semiconductor, Inc.

Cell Broadband Engine is a trademark of Sony Computer Entertainment Inc.

InfiniBand, InfiniBand Trade Association and the InfiniBand design marks are trademarks and/or service marks of the InfiniBand Trade Association.

Other company, product and service names may be trademarks or service marks of others.