



Session: 409160  
Agenda key: 45GH

# @server **iSeries**

## **iSeries Access for Web: Database Access**

Warren Acker    warrena@us.ibm.com  
iSeries Access for Web Development

© Copyright IBM Corporation, 2005. All Rights Reserved.  
This publication may refer to products that are not currently  
available in your country. IBM makes no commitment to make  
available any products referred to herein.



Session title: iSeries Access for Web: Database  
Access

Session ID: 409160

Agenda Key: 45GH

Speaker: Warren Acker

© 2005 IBM Corporation



PAGE 2



## Agenda

- iSeries Access for Web Overview
- Database Overview
- End user/Administrator tasks
- Extract Server Data
- Working with SQL Tables
- Copying data to the iSeries
- Run SQL and the SQL Wizard
- SQL output types and options
- Output destinations
- Importing Client Access Data Transfer requests
- Managing saved requests
- Support for WebSphere Portal Server
- Summary
- Questions

## iSeries Access for Web Overview

iSeries Access for Web is software that runs on the iSeries server. It provides access to various iSeries functions through a browser and provides a user-centric, web-based view of iSeries or AS/400 applications and information. No software required to be installed on the client, other than a web browser.

iSeries Access for Web functions include:

- *Printers* - printer output viewing, printers, shared printers, and output queues
- *Messages* - user messages, message queues, send messages
- *Jobs* - work with jobs and server jobs
- *5250* user interface
- *Database* - run SQL statements, work with tables, upload data, manage frequently run requests, extract server object information
- *Files* - work with files in the iSeries integrated file system or within NetServer file shares, upload files to the integrated file system or a NetServer share.
- *Command* - run iSeries commands from the browser.



## iSeries Access for Web Overview

To get hands on information about iSeries Access for Web functionality, attend or get the materials for:

**Sessions 55LA-56LA:** OPEN LAB:iSeries Access for Web

Or

**Visit the iSeries Access for Web Page.**

<http://www.ibm.com/servers/eserver/iseries/access/web/>

© 2005 IBM Corporation

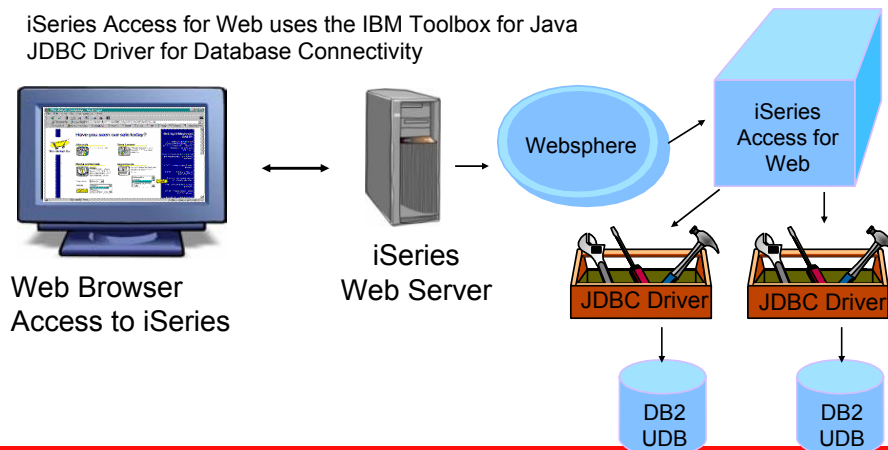


PAGE 5



## Database Overview

iSeries Access for Web uses the IBM Toolbox for Java  
JDBC Driver for Database Connectivity



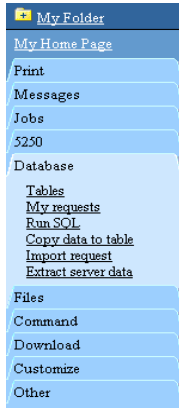
© 2005 IBM Corporation



PAGE 6



## iSeries Access for Web - Database Functions

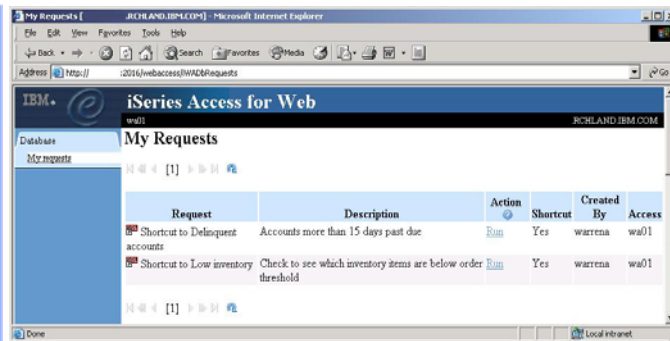


iSeries Access for Web has a very robust set of capabilities for working with DB2 UDB on the iSeries

- Tables - view, update, insert records into, or delete records from SQL tables.
- My Requests - run, copy, delete, rename saved requests, or create and manage shortcuts.
- Run SQL - run a SQL statement. The SQL wizard may be used to help create a SELECT statement.
- Copy data to table - Copy data from a workstation file to a DB2 table on the iSeries.
- Import request - Import an iSeries Access for Windows/Client Access Data Transfer request profile.
- Extract server data – Allows for mining of OS/400 object data

## What an End User Can Do

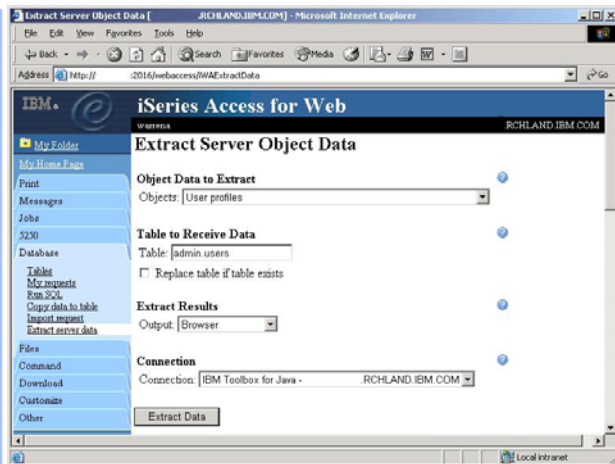
Users can be given only the minimum amount of function necessary to perform their job



## What an Administrator Can Do

## Extract Server Data

Extract OS400 object information into a database table or tables. Then use Tables or Run SQL functions to retrieve relevant data.



## Administration Tasks for Tables

## Working with Tables

The screenshot shows the IBM iSeries Access for Web interface in a Microsoft Internet Explorer browser window. The page title is "Series Access for Web". The main content area displays connection information: "Connection: IBM Toolbox for Java - RCHASD8B.RCHLAND.IBM.COM" and "Table filter: WADEMO". Below this is a table with the following structure:

Table	Description	Action
WADEMO.PARTS		<a href="#">Insert</a> <a href="#">Update</a> <a href="#">Quick view</a> <a href="#">Run SQL</a> <a href="#">Copy data to table</a>

Annotations with blue callouts and arrows point to various elements:

- Connection Info & Table filter**: Points to the connection and table filter text.
- Table actions**: Points to the action links in the table row.
- Database preferences**: Points to the "Database Preferences" link in the left sidebar.

The left sidebar contains a navigation menu with categories: Print, Messages, Jobs, 5250, Database, Tables, My requests, Run SQL, Copy data to table, Import request, Files, Command, Customize, Other, and Related Links.

## Table Filter

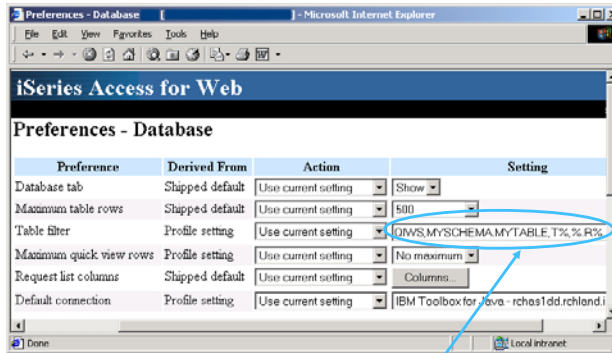
Used to control the tables displayed in the Tables list

Comma-separated list of

- schemas
- schema filters
- tables
- table filters

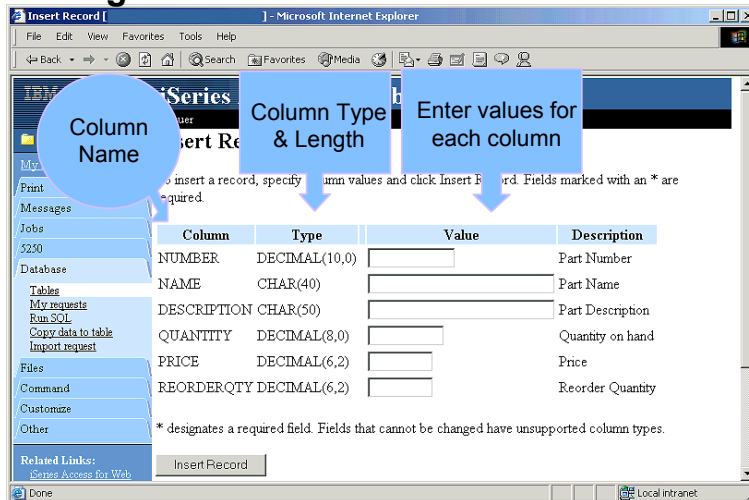
The % character is used as a wild card character.

\*USRLIBL is a special value to identify all tables in the user portion of the library list.



QIWS,MYSCHEMA.MYTABLE,T,%R%  
 All tables in QIWS, the table MYSCHEMA.MYTABLE, all tables in schemas beginning with T, and all tables beginning with R.

## Inserting New Records into A Table



## Updating or Deleting Existing Records

The first step to update or delete records from a table is to select a range of records to update. Wildcards may be used in the selection.

Specify column values, to select which records you want to update. To select all records, do not specify any values and click Select Records

Column	Type	Value	Description
NUMBER	DECIMAL(10,0)	<input type="text"/>	Part Number
NAME	CHAR(40)	<input type="text"/>	Part Name
DESCRIPTION	CHAR(50)	<input type="text"/>	Part Description
QUANTITY	DECIMAL(8,0)	<input type="text"/>	Quantity on hand
PRICE	DECIMAL(6,2)	<input type="text"/>	Price
REORDERQTY	DECIMAL(6,2)	<input type="text"/>	Reorder Quantity

Select Records

Note: For character fields, the % character can be used as a wild card character. For example, specifying a value A% in a column selects all records that have a value beginning with A.

## Update

Select records to update - specific column value

You can enter values for one or more columns to restrict the number of items returned in the list

Only records with matching column values are returned in the list

Action	Part #	Description
<a href="#">Update</a> <a href="#">Delete</a>	0987654321	13.5 x 17 Stainless steel propeller

Column	Type	Value	Description
Part #	CHAR(15)	0987654321	
Description	CHAR(40)	<input type="text"/>	
Current quantity	NUMERIC(5,0)	<input type="text"/>	
Reorder quantity	NUMERIC(5,0)	<input type="text"/>	
Cost per unit	NUMERIC(5,0)	<input type="text"/>	
Supplier name	CHAR(30)	<input type="text"/>	
Supplier website	CHAR(75)	<input type="text"/>	

Select Records

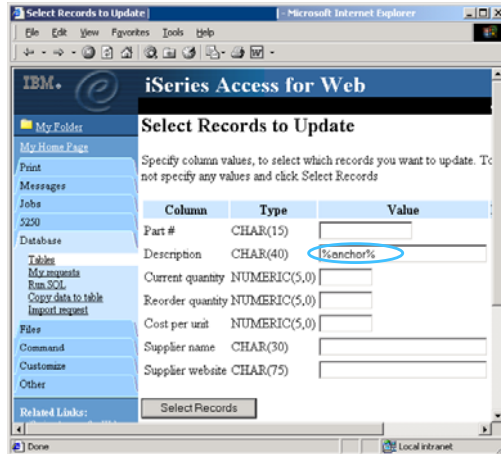


## Update

Select records to update - columns containing text

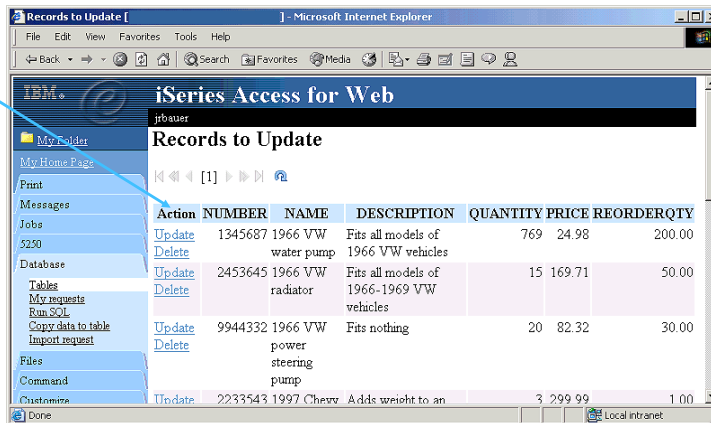
For character fields, % can be used as a wildcard character

- Use A% to find all column values starting with A
- Use %A to find all column values ending with A
- Use %A% to find all column values containing A



## Updating and Deleting Records

The Action links allow you to either update or delete a record



## Updating a Record

With the update function column values for a record may be updated

To update the record, change column values and click **Update Record**. Fields marked with an \* are required.

Column	Type	Value	Description
NUMBER	DECIMAL(10,0)	1345687	Part Number
NAME	CHAR(40)	1966 VW water pump	Part Name
DESCRIPTION	CHAR(50)	Fits all models of 1966 VW vehicles	Part Description
QUANTITY	DECIMAL(8,0)	769	Quantity on hand
PRICE	DECIMAL(6,2)	24.98	Price
REORDERQTY	DECIMAL(6,2)	200.00	Reorder Quantity

\* designates a required field. Fields that cannot be changed have unsupported column types.

## Deleting a Record

The Delete Record function requires you to verify the record you chose to delete

This will delete all records that match these column values.

Table: WADEMO.PARTS

NUMBER	= 1345687
NAME	= 1966 VW water pump
DESCRIPTION	= Fits all models of 1966 VW vehicles
QUANTITY	= 769
PRICE	= 24.98
REORDERQTY	= 200.00

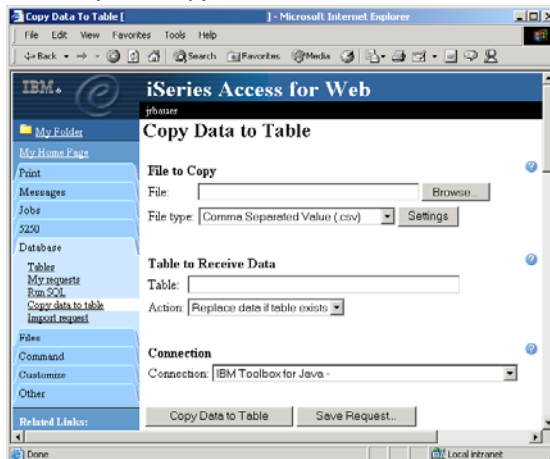
## Copying Data to the iSeries

## Copying Data to the iSeries

*Copy data to table function allows you to copy files to a table*

Specify:

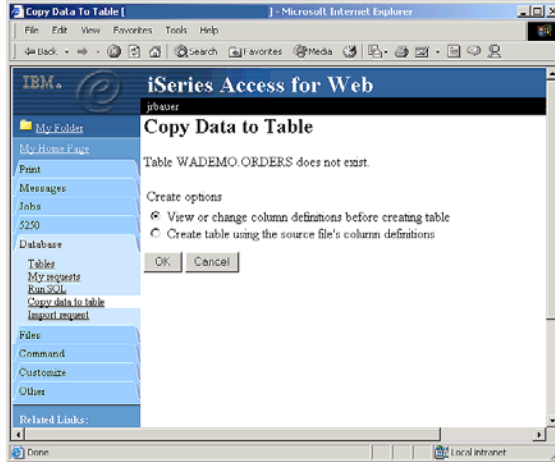
- File name
- File type
- File settings
- Table name
- Replace or append records to table
- Connection



## Copying Data to the iSeries: Creating a new table

Copy data to table will create a new table if one does not exist

Choose to view or change the table definition or to simply create the table using the default definition determined by iSeries Access for Web

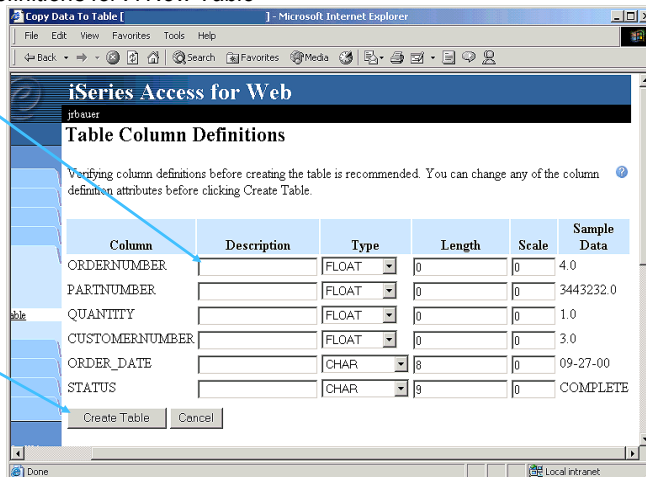


## Copying Data to the iSeries: Creating a new table

Verify Column Definitions for A New Table

From this panel you may add a description, change data types, column length, and scale

Click Create Table to create the new table and copy your data to the new table



## Copy Data to Table

### *Notes and Restrictions*

- Data within a column needs to be the same type. This means a column that contains numeric data should only contain numeric data.
- Only first sheet of data is supported when using Microsoft Excel and Lotus spreadsheets
- Date/Time columns must be in a string format. Excel and Lotus date and time formats are not supported.
- Not all file types supported by Run SQL can be used for Copy Data To Table
- A saved Copy Data To Table request will always ask you to enter the name of the workstation file to copy the data from. This is done for security of your workstation data.

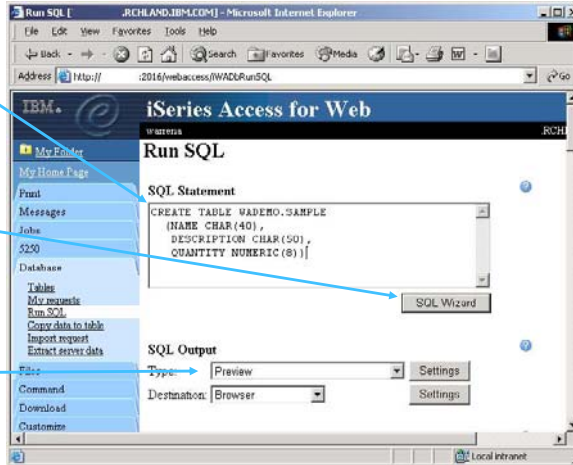
## Run SQL and the SQL Wizard

## Run SQL

The Run SQL function allows you to type in a free form SQL Statement

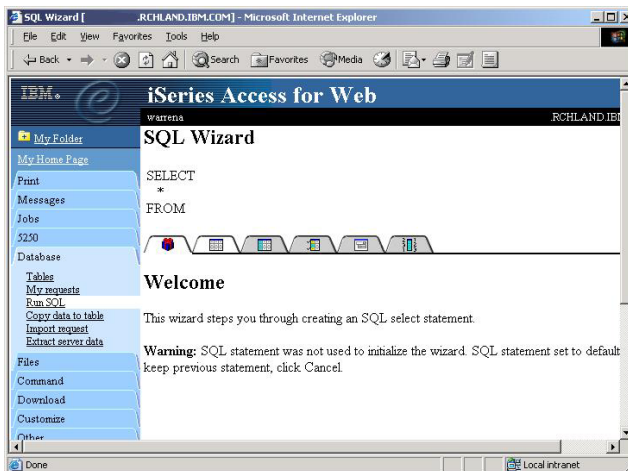
The SQL Wizard can help you generate a SQL SELECT statement

If your statement produces a result set you can select one of many output formats



## The SQL Wizard

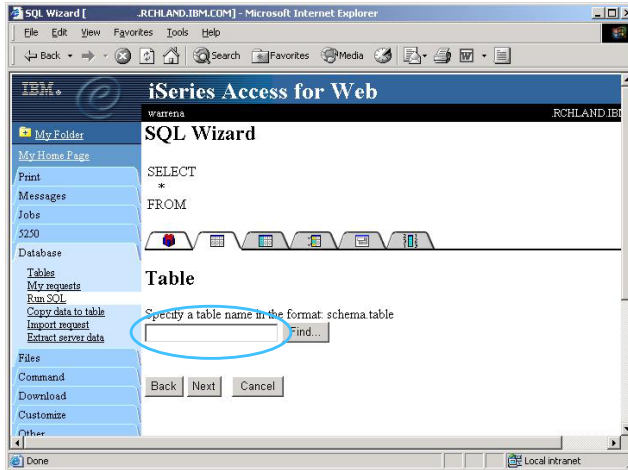
The SQL Wizard helps you generate a single table SELECT statement



## The SQL Wizard: Creating a Select Statement

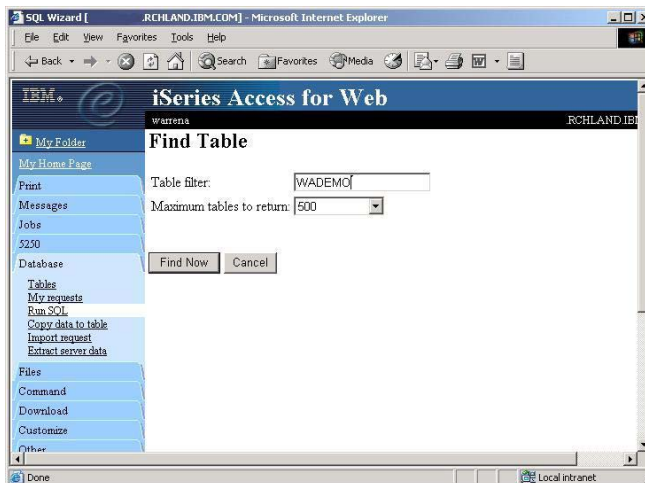
Step 1: Choose a table

Type in or find the table from which to select records



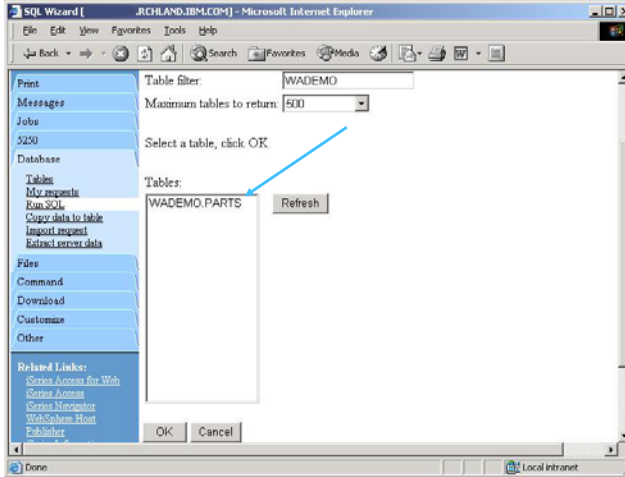
## The SQL Wizard: Specify a table filter

Type in a table filter to help narrow your search. Many schemas (libraries) may be specified by putting them in a comma separated list



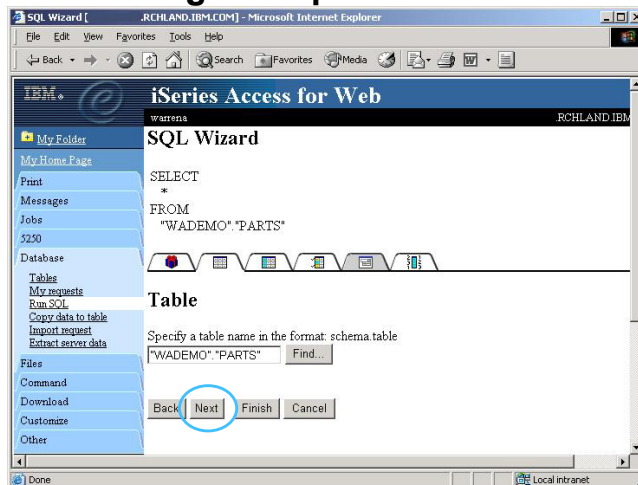
## The SQL Wizard: Select a table from the search

Select a table and click OK to use it to generate the SELECT statement



## The SQL Wizard: Going to step 2

Click **Next** button to select columns or click **Finish** to select all columns from the table



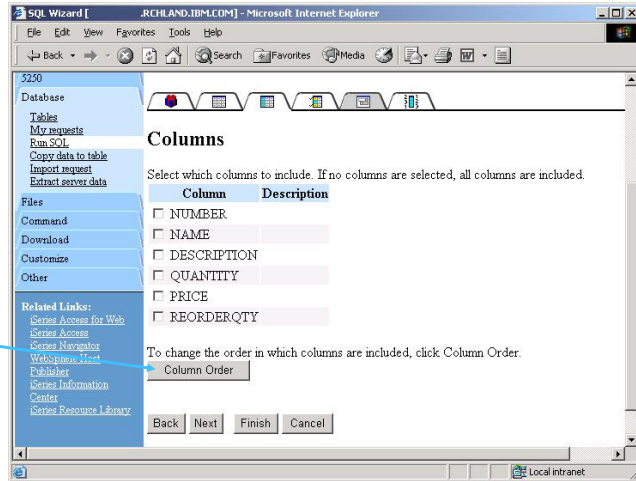


## The SQL Wizard: Choosing columns for output

Step 2: Choosing columns

Check the boxes next to the columns to include them in the statement

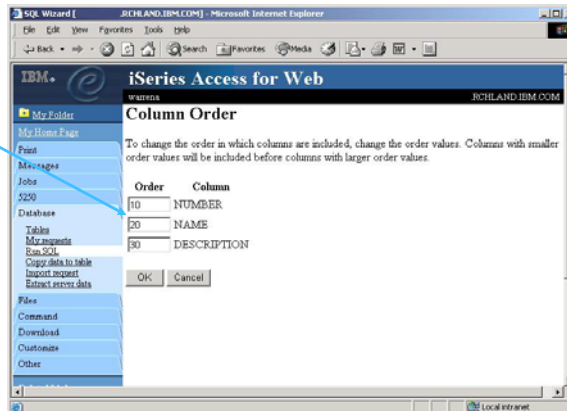
Click the column order button to change the order of columns in the output



## The SQL Wizard: Choosing columns for output

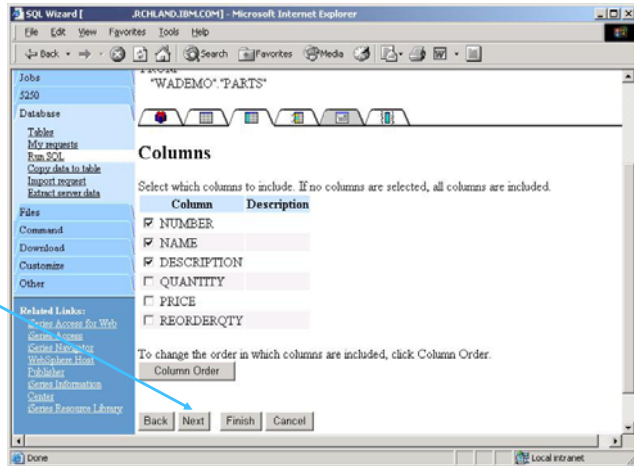
Step 3: Ordering columns

Order columns by specifying a sequence number



## The SQL Wizard: Going to step 4

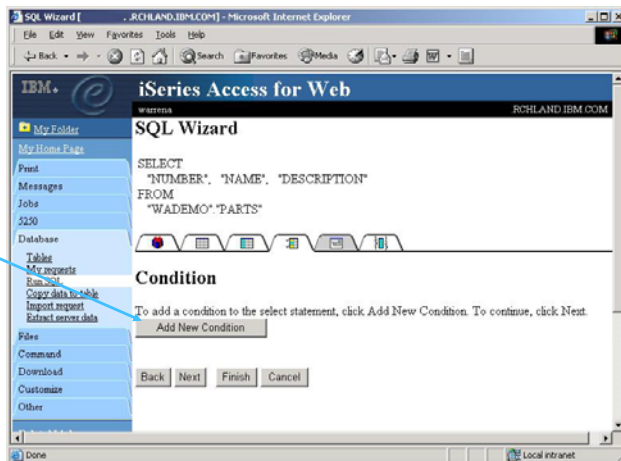
After columns and the column order has been chosen, select **Next** to specify conditions on the columns or **Finish** to return to Run SQL



## The SQL Wizard: Specify Conditions

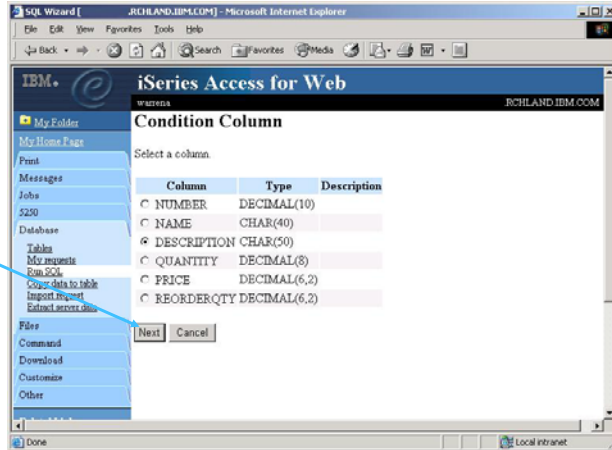
Step 4: Adding conditions

Conditions allow you to select records that meet certain criteria. Click Add New Condition to specify a condition.



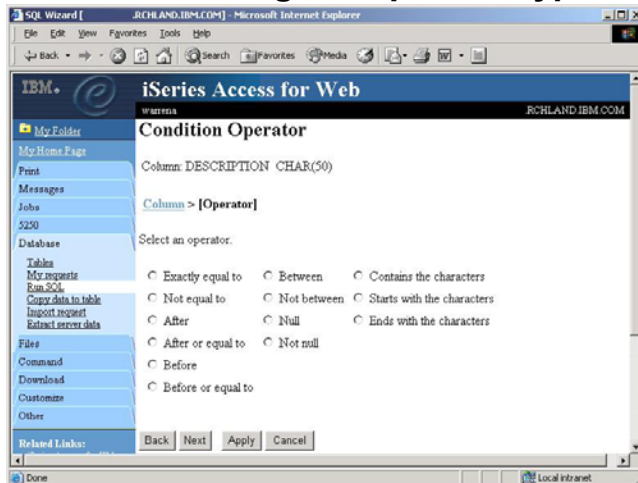
## The SQL Wizard: Specify a conditional column

Select the column to use in the condition and click Next



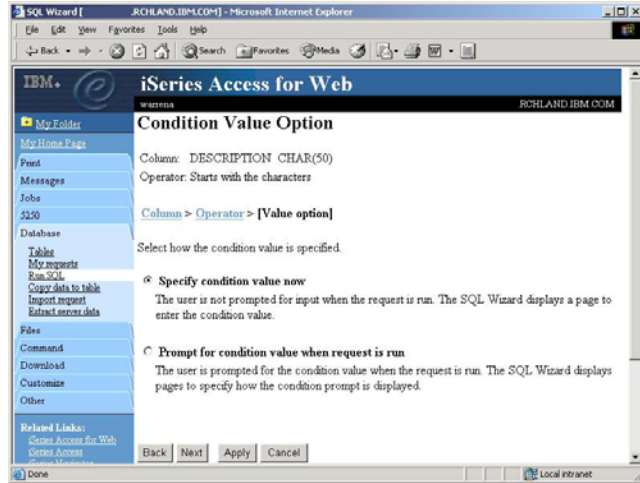
## The SQL Wizard: Choosing the operator type

The SQL wizard allows you to choose the operator to use in the condition



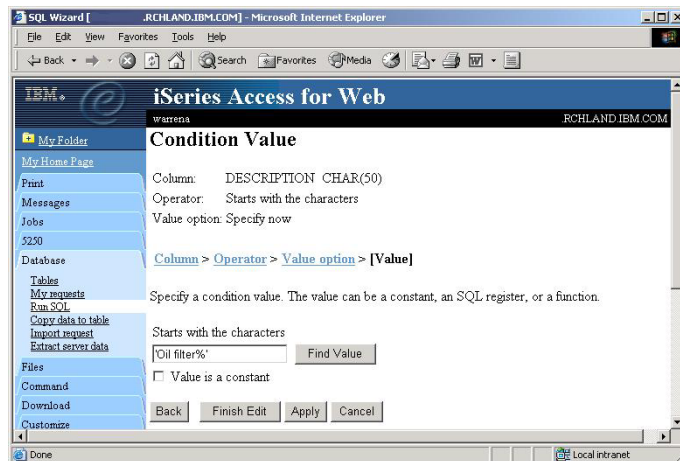
## The SQL Wizard: Choosing static versus dynamic

The SQL wizard allows you to choose the if the condition value is specified in the request, or is prompted for when the request is run.



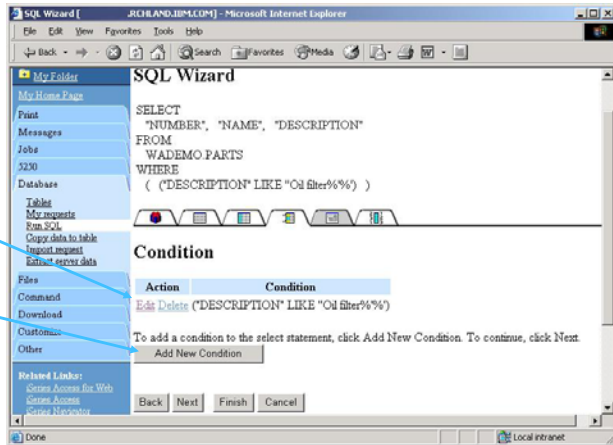
## The SQL Wizard: Specifying a static value

The SQL wizard allows you to specify the value for the condition. The value can be a value, constant or other specific function.



## The SQL Wizard: The condition is created

The condition shows up both in the SQL and in a condition list. You may edit or delete the condition. You may also add additional conditions.

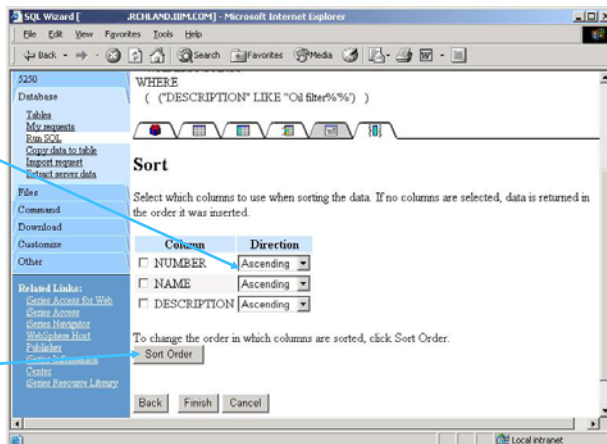


## The SQL Wizard: Creating a Select Statement

### Step 5: Sorting records

Choose the columns to be used in the sort. Also select ascending or descending order

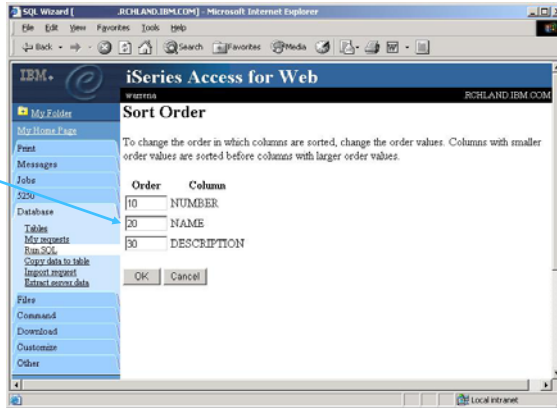
Click the Sort Order button to change the priority of the columns used in the sort



## The SQL Wizard: Specify sort order

Step 6: Choosing the sort order

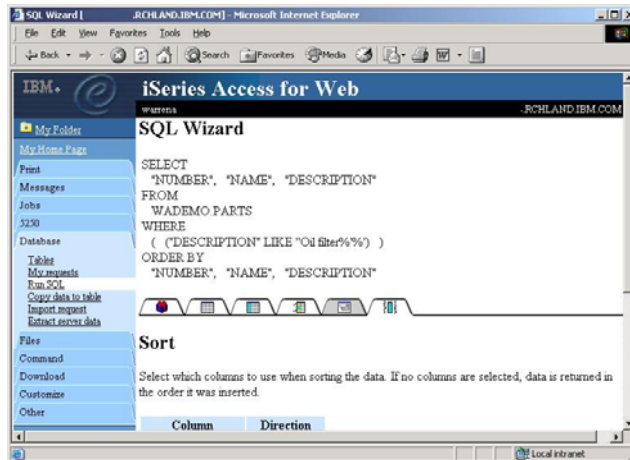
Create a sort order by specifying a sequence number for each column



## The SQL Wizard: The statement is complete!

Step 7: Finishing up

The statement is now complete. Click the Finish button (not shown) on the bottom of the SQL Wizard page to return to Run SQL

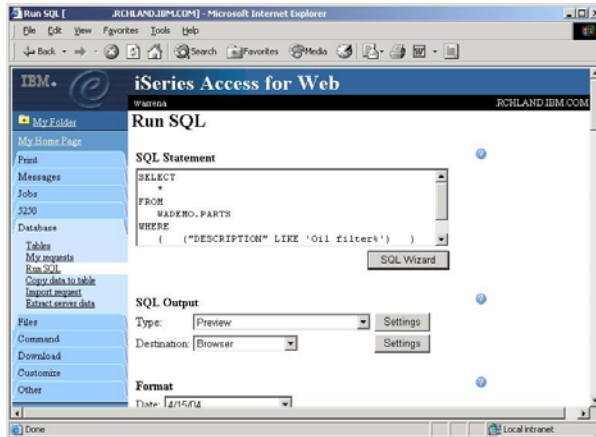


## The SQL Wizard: Creating a Select Statement

Step 8: Returning to Run SQL

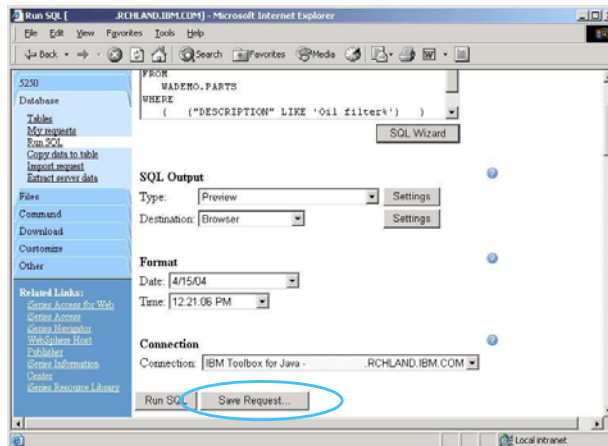
The SELECT statement you generated is available for use in Run SQL

Statements generated by the wizard may be run immediately through Run SQL or saved into a request in My requests for later use.



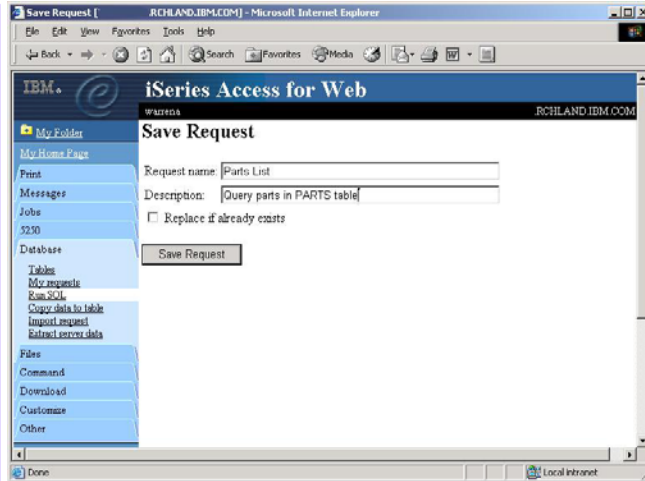
## Run SQL: Saving a SQL Request

After creating a statement, by hand or with the Wizard you also have the option to store the statement for later use



## Run SQL: Saving a SQL Request

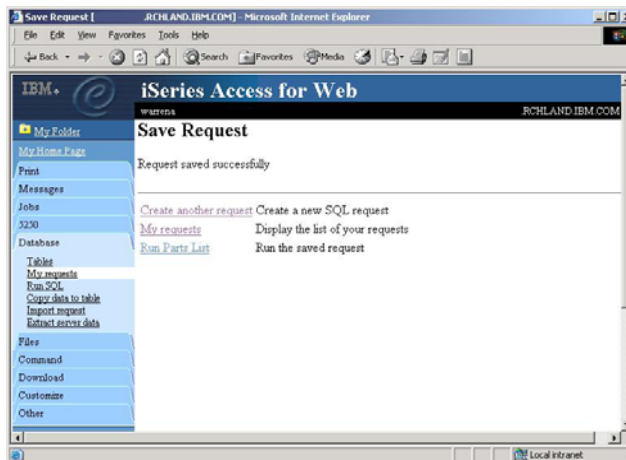
Type in the request name and a description and click 'Save Request' to save the SQL request. Choose 'Replace if already exists' to replace an existing request of the same name



## Run SQL: Saving a SQL Request

Quickly running a saved request

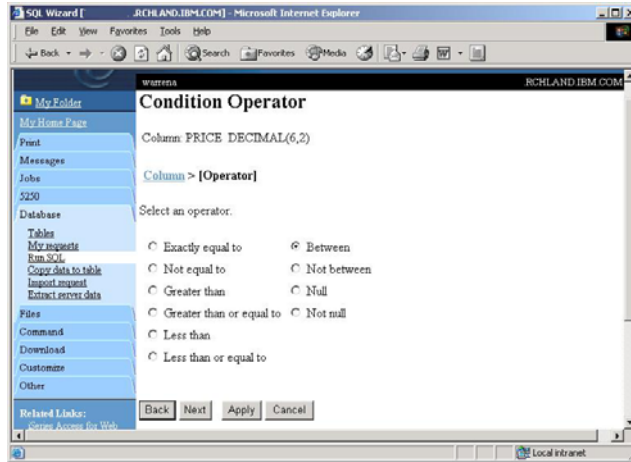
After saving the request you will be given a link to run the request. The request will also show up in your **My Requests** list





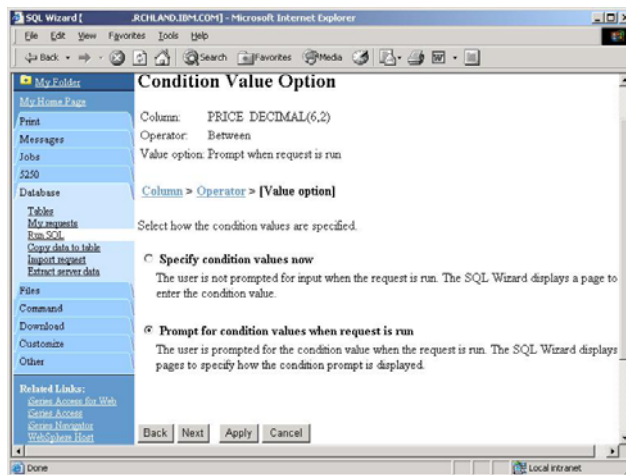
## Going back... The SQL Wizard: Dynamic query

Choose a comparison operator just like we did in the static query example



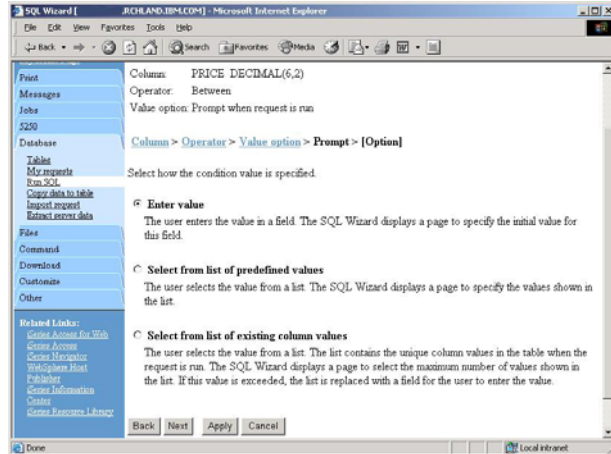
## SQL Wizard: Dynamic query – condition value

Select to prompt for values when the request is run



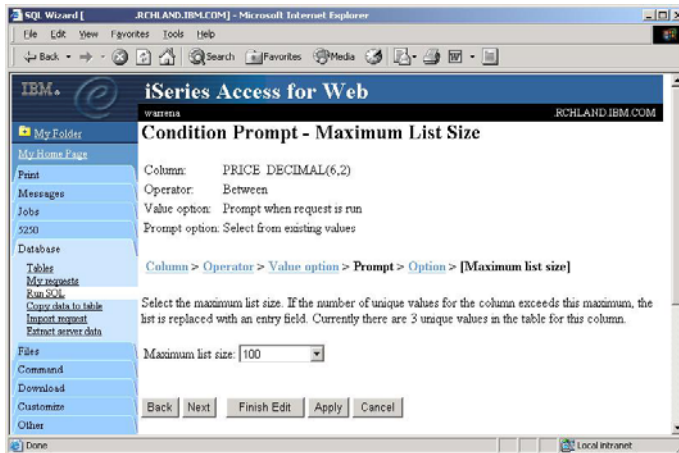
## SQL Wizard: Dynamic query – prompt type

Select how the user will be prompted for the values



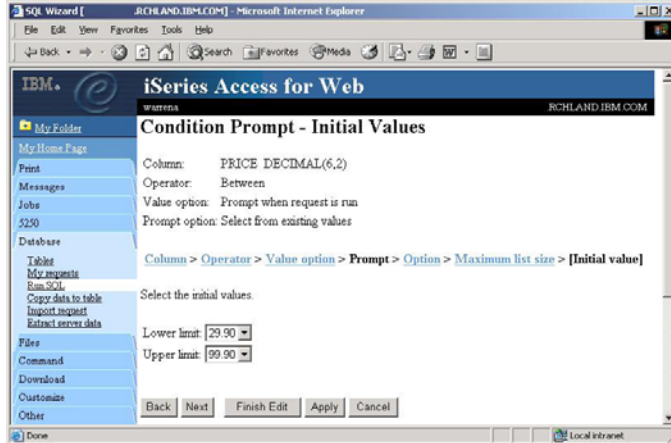
## SQL Wizard: Dynamic query – list size

Choose the maximum number of unique values that are listed when using the existing values option



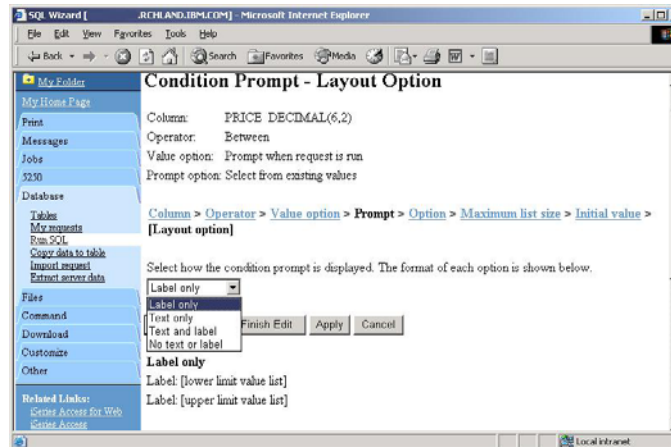
## SQL Wizard: Dynamic query – initial values

Select the initial values to be displayed on the form



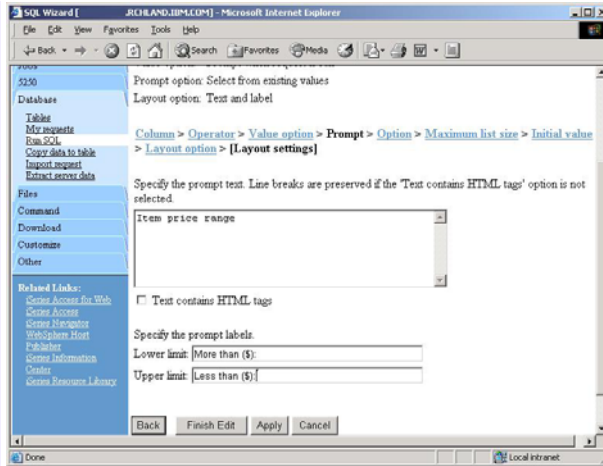
## SQL Wizard: Dynamic query – prompt text layout

Select the layout of the description text used for each condition



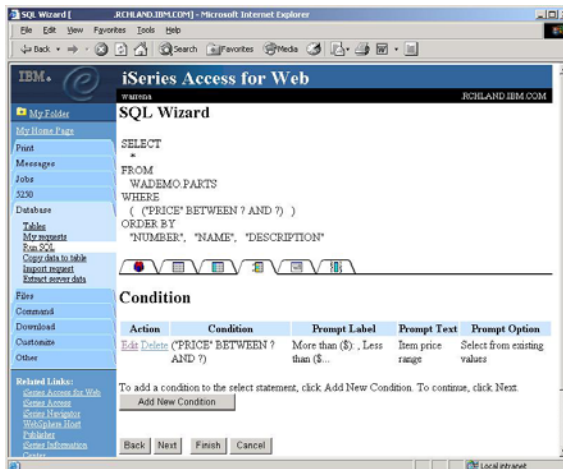
## SQL Wizard: Dynamic query – prompt text

Specify the text description used for each condition



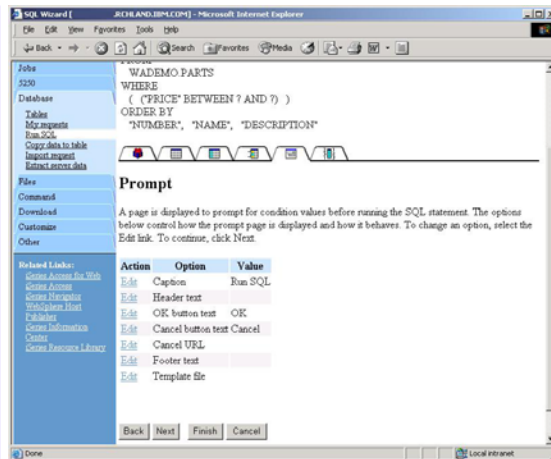
## SQL Wizard: Dynamic query – condition view

Completed a dynamic condition



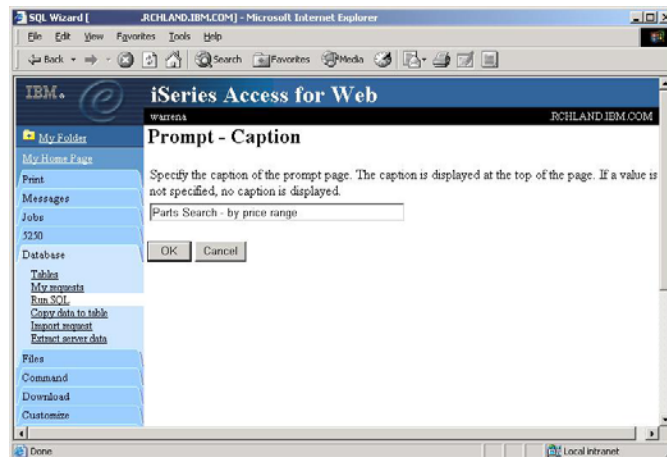
## SQL Wizard: Dynamic query – prompt page

Specify the text to be used for the configurable items displayed on the prompting page



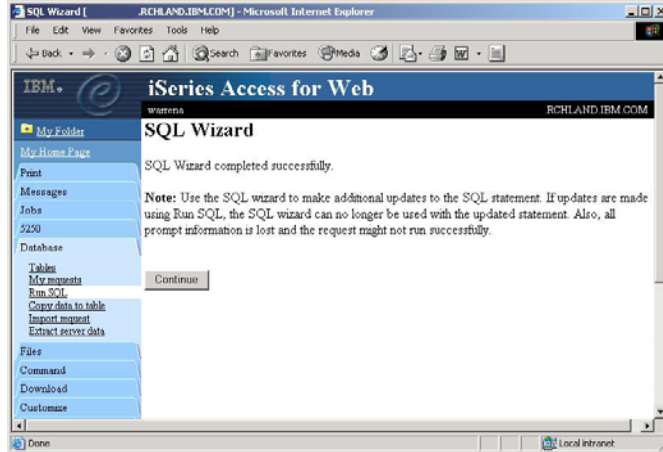
## SQL Wizard: Dynamic query – prompt page caption

Specify the text to be used for the caption of the prompt page

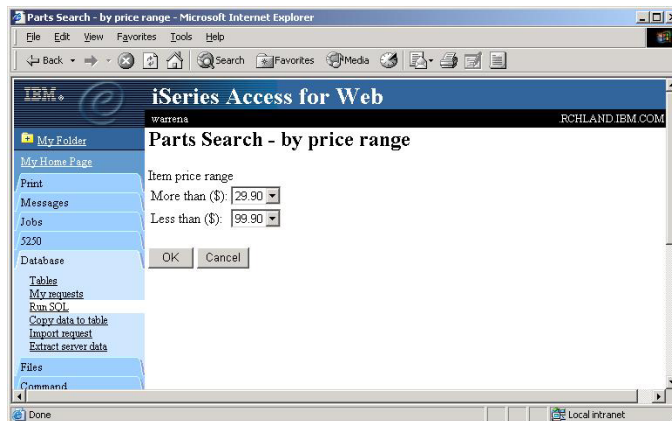


## SQL Wizard: Dynamic query – wizard warning

Dynamic queries generated by the wizard can only be modified using the wizard



## SQL Wizard: Dynamic query example



## SQL Wizard: Dynamic query results

The screenshot shows a web browser window titled "SQL Output" from the URL ".RCHLAND.IBM.COM". The page displays a table with the following data:

NUMBER	NAME	DESCRIPTION	QUANTITY	PRICE	REORDERQTY
1054922	Oil filter-41LM	Filter for McClaren F1 LM	24	99.90	20.00
1054925	Oil filter-41FT	Filter for Ferran Testarosa	18	79.90	20.00
1054928	Oil filter-41CV	Filter for Chevrolet Corvette Z06	5	29.90	20.00

## Dynamic Query

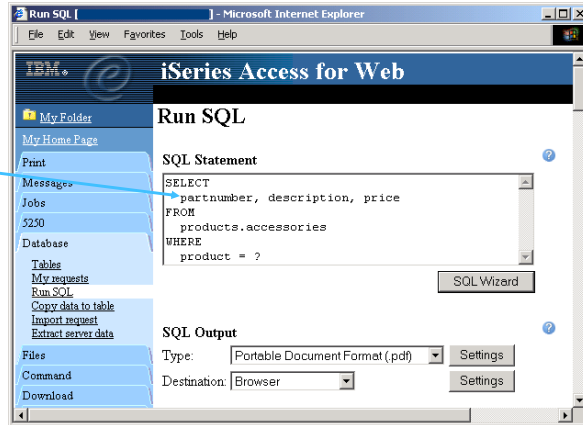
*Advanced support*

- Type prompted statement manually using Run SQL
  - SELECT \* FROM QIWS.QCUSTCDT WHERE LSTNAM = ?
- No SQL wizard support
- Must save the request. Cannot run dynamically using Run SQL.
- Must pass values for each prompt (parameter marker) when request is run. Parameter name for first prompt must be iwaparm\_1, parameter name for second prompt must be iwaparm\_2 ... For example:
  - Form with input form elements named iwaparm\_1, iwaparm\_2, ...
  - Bookmark with URL parameters named iwaparm\_1, iwaparm\_2, ...
- Provides more flexibility on how the prompted values are specified compared to the SQL wizard approach

## Dynamic Query

Enter SQL statement

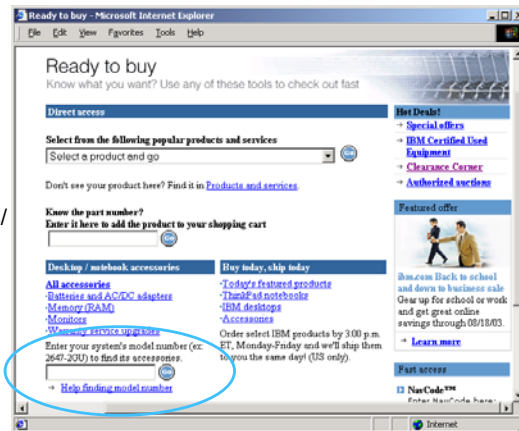
SQL statement with parameter markers entered directly into Run SQL



## Dynamic Query

Form example

- Want to use different button style
- Want button next to prompt control, not underneath it
- Form element:  
`<FORM name=accessories action="http://server/webaccess/iWADbExec" method="get">`
- Hidden element:  
`<input type="hidden" name="request" value="req" />`
- Entry field:  
`<input type="text" name="iwaparm_1" value="" />`

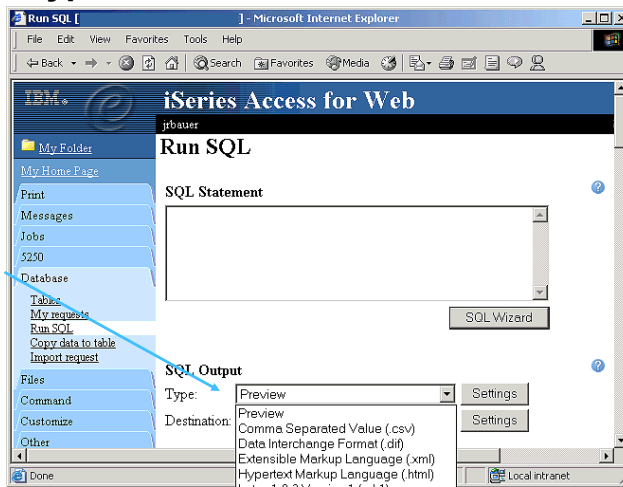




## SQL Output Types and Options

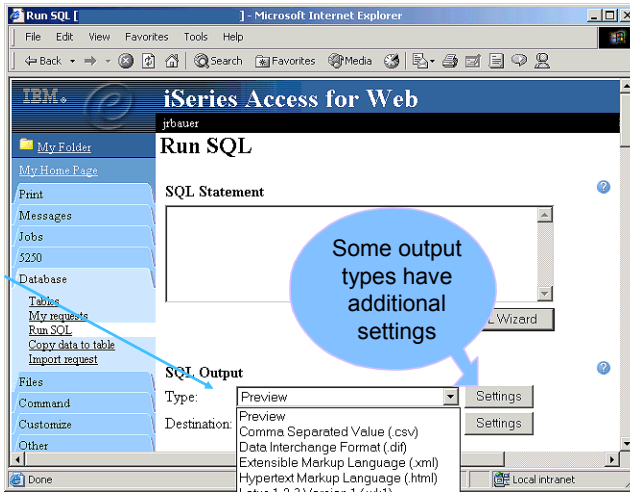
## SQL Output Types

Results generated by statements may be returned directly to the browser page in an HTML format defined by iSeries Access for Web. To do this, select the Preview option.



## SQL Output Types

Results generated by statements may also be returned in many different output file types, including Plain Text, CSV, BIFF3, BIFF 4, Excel XML, DIF, HTML, Tab Delimited Text, WK1, XML, and PDF



## SQL Output Types

Type	Description	Applications	Notes
Preview	HTML paged-table list format	Browser	Cannot mail or send to folder, can limit number or rows returned, *note
Hyper Text Markup Language (*.html)	Format commonly used by internet browsers	Browser	Formatting preserved if import into Excel, *note
Microsoft Excel 3 Microsoft Excel 4 (*.xls)	Binary Interchange File Format	Microsoft Excel 3 and later	Returns up to 16384 rows, can be used with newer versions of Excel
Portable Document Format (*.pdf)	Printer-friendly format	Adobe Acrobat	Preserves all fonts, formatting, graphics, and color, *note
Extensible Markup Language (*.xml)	Universal format for structured documents and data on the Web	XML parsers, newer versions of IE and Netscape browsers	*note

\*note = supports unicode data

## SQL Output Types (cont.)

Type	Description	Applications	Notes
Lotus 1-2-3 Version 1 (*.wk1)	Format used by Lotus 1-2-3 Version 1	Lotus 1-2-3 Version 1 and later	Returns up to 8192 rows, can be used with newer versions of Lotus 1-2-3
Comma Separated Value (*.csv)	Text format where fields are separated by commas	Supported by a wide variety of applications including Excel and 1-2-3	Numbers of rows returned not limited
Data Interchange Format (*.dif)	Format that represents data in rows and columns	Used for data interchange between spreadsheet programs and other applications	The original Lotus 1-2-3 format!
Text - Plain (*.txt)	Plain text format for editing, displaying and printing	Text editors	No separator characters placed between the fields of data

## SQL Output Types (cont.)

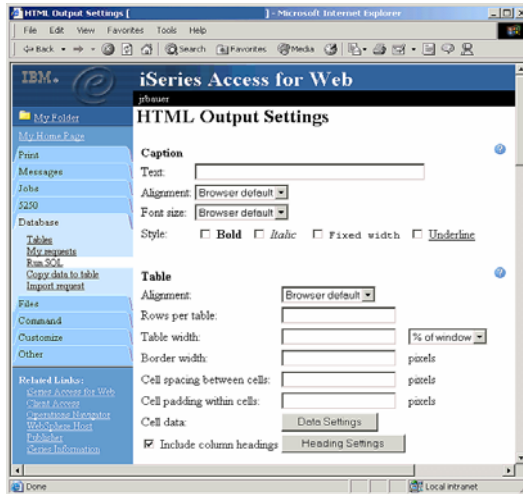
Type	Description	Applications	Notes
Text – Tab Delimited (*.txt)	Text format where fields are separated by tab characters	Any application that processes text.	Alternative to CSV if numeric data contains commas
Microsoft Excel XML	New format supported by MS Office XP and newer	Any Microsoft product that can read MS XML files	Supports multiple sheets of data, with each sheet holding 65535 rows of data.

## SQL Output Types

### HTML Output Settings

Many settings for:

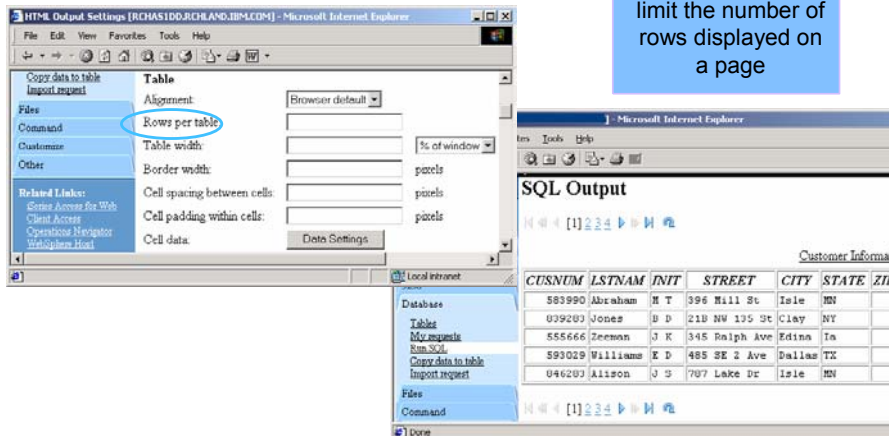
- Caption
- Table
- Cell data



## HTML Output Type

### Displaying output in a paged list

Specify a value for 'Rows per table' to limit the number of rows displayed on a page



## HTML Output Type

Contrasting other layouts

Preview output type displays a limited number of rows per page, but you can't customize how the list is displayed

CUSNUM	LSTNAM	INIT	STREET	CITY	STATE	ZIPCOL
583990	Abraham	M T	396 Mill St	Iste	MN	56342
839283	Jones	B D	21B NW 135 St	Clay	NY	13041
555666	Zeeeman	J K	345 Ralph Ave	Edina	In	45443
593029	Williams	E D	485 SE 2 Ave	Dallas	TX	75218
846283	Alison	J S	787 Lake Dr	Iste	MN	56342
397267	Tyron	W E	13 Myrtle Dr	Hector	NY	14841
593829	Pamas	F N	9 Endle Lan	Salts	UT	76609

If you do not specify a value for 'Rows per table', all results are returned in a single page

CUSNUM	LSTNAM	INIT	STREET	CITY	STATE	ZIP
583990	Abraham	M T	396 Mill St	Iste	MN	
839283	Jones	B D	21B NW 135 St	Clay	NY	
555666	Zeeeman	J K	345 Ralph Ave	Edina	In	
593029	Williams	E D	485 SE 2 Ave	Dallas	TX	
846283	Alison	J S	787 Lake Dr	Iste	MN	

## HTML Output Type

A template file can be used to display custom content before and after the statement results

The template file must exist in the integrated file system on the iSeries server

HTML Output Settings [ Microsoft Internet Explorer ]

File: /boats/homepage/accesswater.html

Tag: %CONTENT%

General

BNAME	BFEET	BYEAR	BOOST	BNT01
Mako Sportfisher	19	1989	13000	-Located in Anacortes, WA.
Monk Bridge-deck Cruiser	36	1956	19900	-Built of mahogany, oak, and cedar.
Carver Santa Cruz	28	1978	23900	-Constructed of fiberglass.

## HTML Output Type

*Example of template file*

```
<HTML>
<BODY>
<table>
<tr><td>
<img SRC="boathead.gif" height=43 width=614>
</td>
<tr>
  <td align="right">
    <a href="/webaccess/iWAHome">Home</a>
  </td>
</tr>
</table>
<br>
%%CONTENT%%
<br>
<BODY>
</HTML>
```

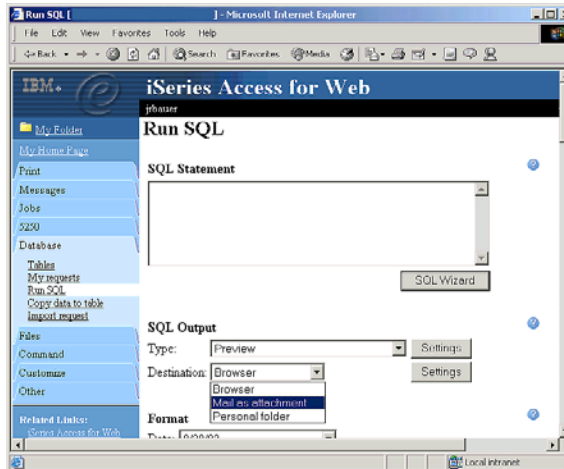
## SQL Output Destinations

## SQL Output Destinations

*Choosing a destination*

Choose from three different output destinations:

- Browser
- Email
- Personal folder



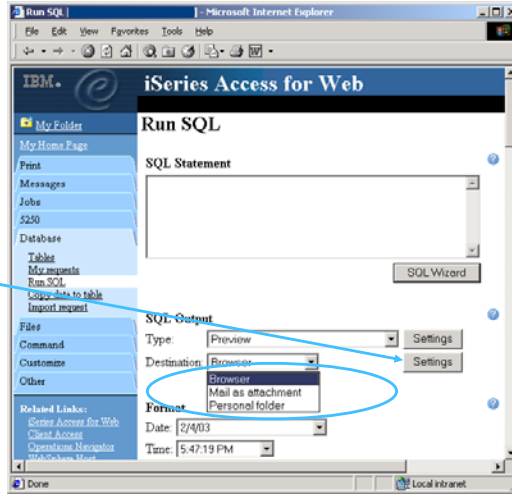
## SQL Output Destinations

*Items to consider when choosing destination type*

- Browser
  - Allows for viewing results immediately after query completes.
  - Ties up browser session until query completes
- Email
  - SQL statement executes in the background, with control being returned to the browser session
  - Can include message text along with the results.
  - Can send results to people that don't have access to the iSeries system
  - Send results to multiple people.
  - User running SQL statement must have email address configured before using this option. This user will receive an email when request completes
- Personal folder
  - SQL statement executes in the background, with control being returned to the browser session
  - Send results of SQL statement to multiple people.
  - Person receiving results must be an iSeries Access for Web user.

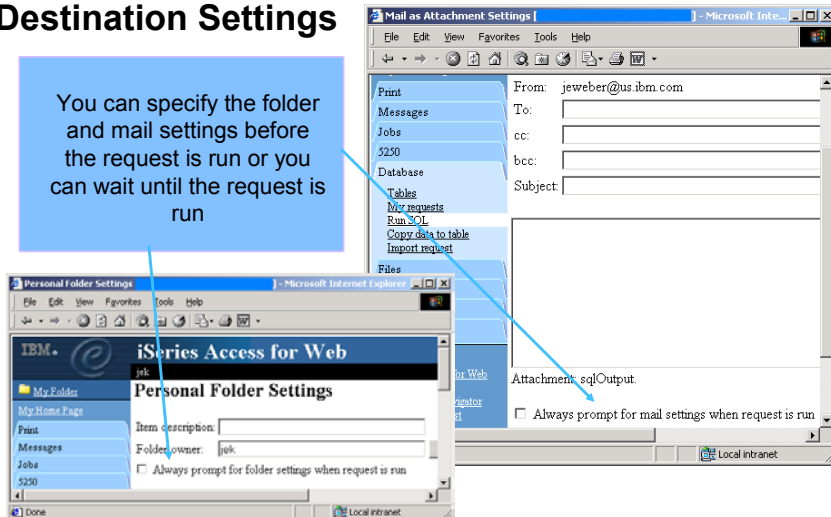
## SQL Output Destinations

Some destination types support type specific settings



## Destination Settings

You can specify the folder and mail settings before the request is run or you can wait until the request is run

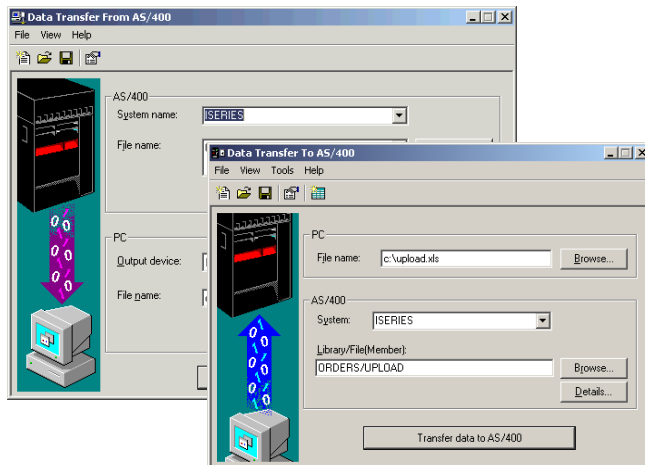




## Importing Data Transfer Requests

## Importing Client Access Data Transfer Requests

Import your existing iSeries Access for Windows and Client Access Data Transfer requests into iSeries Access for Web!



## Importing Data Transfer requests

Client Access, Client Access Express, and iSeries Access for Windows Data Transfer request profiles may be imported into iSeries Access for Web

### Data Transfer From AS/400 / iSeries

- .TTO and .DTF request files supported by iSeries Access for Web
- iSeries Access for Web tries to do a "best fit" match for options in the transfer request file when converting them to a SQL select statement

### Data Transfer To AS/400 / iSeries

- .TFR and .DTT request files supported by iSeries Access for Web
- iSeries Access for Web tries to do a "best fit" match for options in the transfer request when converting them to an upload request

## Importing a Client Access Data Transfer Request

### The Import Function

Browse for or enter in the name of the Client Access Data Transfer upload or download request to import

Click to import the request

## Importing a Client Access Data Transfer Request

*Importing a Data Transfer From AS/400 Request*

The imported transfer request may be run or saved as an iSeries Access for Web request

## Import Request - Restrictions

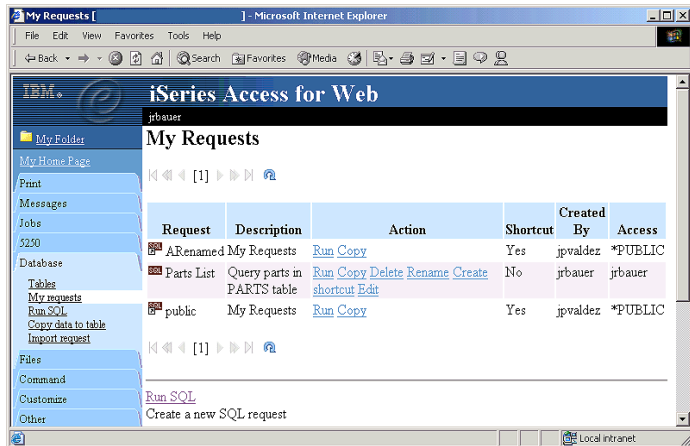
- Some file types supported by Data Transfer are not supported by iSeries Access for Web. In some cases the file type is mapped to a supported type. In the case where a close match for the file type does not exist in iSeries Access for Web, the import will fail.
- Some Data Transfer output options are not supported by iSeries Access for Web. These options are ignored. An example is a Data Transfer request to a printer.
- iSeries Access for Web only provides access to the default member of a file (table).
- iSeries Access for Web does not differentiate between source physical and data physical files. SRCSEQ and SRCDAT columns are never stripped on queries and never added on copies.
- Some Data Transfer download requests cannot be modified by the SQL Wizard. In these cases, you can modify the requests on the Run SQL panel.
- iSeries Access for Web determines the encoding of client files based on the Data Transfer translate option and the client browser settings. If the resulting encoding is not correct, you need to set the value on the Import page.

# Managing Requests

# Managing Requests

*Managing your stored SQL and copy data requests*

From My Requests you can run, copy, delete, rename, or create shortcuts to requests. You may also access shortcuts others have given you



## Notes: Managing Requests

Use My requests to manage saved database requests. Saved requests include requests saved using Run SQL or Copy data to table. Imported Client Access Data Transfer requests, saved in either format, are also included in this list. The My requests function supports the following actions:

- **Run**  
Run the request. If the request is a Run SQL request, it will run the statement. If the request is a Copy data to table request, the Copy data to table panel will display will all the request attributes set.
- **Copy**  
Make a copy of the request.
- **Rename**  
Rename the request.
- **Delete**  
Delete the request.
- **Create Shortcut**  
Create a shortcut to the request. Access to the shortcut can be given to another user, a group of users, or to everyone (\*PUBLIC)

## Shortcuts

*Working with shortcuts*

My Requests allows you to work with shortcuts

Manage shortcuts you created

Request	Description	Action	Shortcut	Created By	Access
ARenamed My Requests		<a href="#">Run</a> <a href="#">Copy</a>	Yes	jpvaldez	*PUBLIC
Parts List	Query parts in PARTS table	<a href="#">Run</a> <a href="#">Copy</a> <a href="#">Delete</a> <a href="#">Rename</a> <a href="#">Create</a> <a href="#">Shortcut</a> <a href="#">Edit</a>	No	jpbauer	jpbauer
public	My Requests	<a href="#">Run</a> <a href="#">Copy</a>	Yes	jpvaldez	*PUBLIC

[Run SQL](#)  
Create a new SQL request

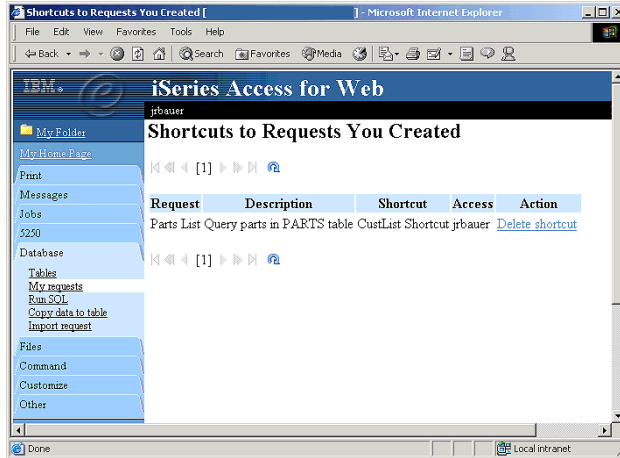
[Copy data to table](#)  
Create a new copy data request

[Shortcuts to requests you created](#)  
Displays a list of shortcuts to requests you created. Shortcuts can be deleted from this list.

## Managing Shortcuts

### Shortcuts to Requests You Created

- Original Request
- Request Description
- Shortcut
- Access - who can use it/see it
- Action - delete the shortcut



## Notes: Working with Shortcuts

Database requests can only be accessed by the iSeries user profile used to create them. A shortcut is a way to share a request with other users. The following topics describe how the request actions apply to shortcuts:

#### Create a shortcut

To create a shortcut, a name and an access value must be specified. The access value identifies who will be able to access the shortcut. The access value can be an existing user profile name on the iSeries server, an existing group profile name, or \*PUBLIC.

#### Run a shortcut

When a shortcut is run, the original request is actually run. If the original request is modified, the shortcut automatically picks up the modified behavior. This is not true for connection information, since the connection information is stored directly with the shortcut. If the connection in the original request is updated, the shortcut will not pick up the new connection. If this is not the desired behavior, the shortcut can be deleted and recreated.

#### Copy a shortcut

Copying a shortcut actually makes a copy of the original request. Like other requests, the access value for a copied request is the user profile used to create the copy. Therefore, any modifications to the copy do not affect the users of the the shortcut.

#### Delete a shortcut

The creator of a shortcut can delete the shortcut. If the shortcut access is a single user profile, the user with access to the shortcut can also delete it. Only the shortcut creator can delete a group or \*PUBLIC shortcut.

#### Rename a shortcut

Only shortcuts with a single user profile access can be renamed. These shortcuts can be renamed by the shortcut creator or by the user with access to the shortcut.

#### Editing shortcuts or creating shortcuts to other shortcuts

Shortcuts cannot be edited and a shortcut cannot be created to another shortcut.

## Request Accessibility

- Database requests can only be accessed by the iSeries user profile used to create them
- A shortcut is a way to share a request with other users on the server.
  - A shortcut is a reference to the original request
- When you create a shortcut to a request you need to specify an "Access" value
  - The access value determines who has access to the shortcut
  - An access value can be
    - a user profile name on the iSeries server
    - a group profile name
    - \*PUBLIC (this gives all users on the server access to the shortcut)
- You cannot create shortcuts to another user's requests
- You cannot create shortcuts to shortcuts
- Only the shortcut creator can delete a \*PUBLIC shortcut

## Shortcut Changes

- The settings of the request referenced by a shortcut cannot be modified by the end user.
- Changes made to the request referenced by the shortcut are automatically reflected when the shortcut is run
  - Note: This is not true for changes to the connection information since the connection information is stored as part of the shortcut

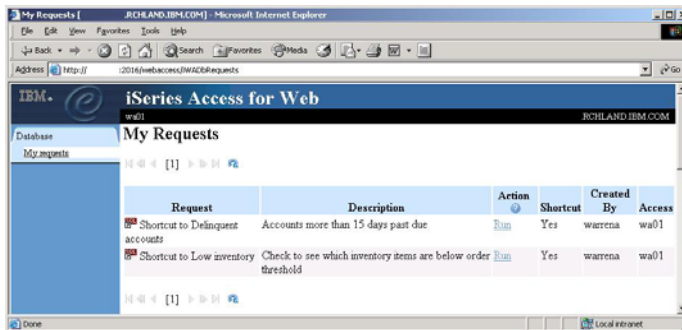
## Shortcut Example

Here is an example of how one company might use shortcuts and customization to manage database usage:

- Use customization to give the database administrator access to all database functions.
- Use customization to deny users, in the \*PUBLIC group, access to all database functions actions other than running shortcuts.
- Create the following three database requests:
  - "Past due accounts"
  - "Low inventory"
  - "New orders"
- Create the following three shortcuts:
  - To "Past due accounts" and give access to the ACCOUNTING group.
  - To "Low inventory" and give access to the PURCHASING group.
  - To "New orders" and give access to the SHIPPING group.

## Shortcut Example (cont.)

- Only the database administrator is allowed to create and modify requests
- Other users are only allowed to run shortcuts
- The shortcuts a user is allowed to run are limited to the shortcuts the administrator decides the user should be able to access.





## Support for WebSphere Portal Server

## Database Table Viewing

Actions	CUSNUM	LSTNAM	INIT	STREET	CITY	STATE	ZIPCOD	CDTLMT	CHGCOD	BALDUE	CDTDUE
	938472	Henning	G K	4859 Elm Ave	Dallas	TX	75217	5000	3	37.00	0.00
	839283	Jones	B D	218 NW 135 St Clay	NY	13041	400	1	100.00	0.00	0.00
	392859	Vine	S S	PO Box 79	Broton	VT	5046	700	1	439.00	0.00
	998485	Johnson	J A	3 Alpine Way	Helen	GA	30545	9999	2	3987.50	33.50
	397267	Tyron	W E	13 Myrtle Dr	Hector	NY	14841	1000	1	0.00	0.00
	389572	Stevens	K L	208 Snow Pass	Denver	CO	80226	400	1	58.75	1.50
	846283	Alison	J S	787 Lake Dr	Isle	MN	56342	5000	3	10.00	0.00
	475938	Doe	J W	59 Archer Rd	Sutter	CA	95685	700	2	250.00	100.00
	693829	Thomas	A N	3 Dove Circle	Casper	WY	82609	9999	2	0.00	0.00
	593029	Williams	E D	485 SE 2 Ave	Dallas	TX	75218	200	1	25.00	0.00

## Database Table – Add Record

IBM WebSphere Portal - Microsoft Internet Explorer

File Edit View Favorites Tools Help

Back Forward Stop Search Favorites Media Print

WebSphere Portal

Welcome My Work My Finances My Newsroom My iSeries My Favorites

5250 iFrame Portlets Files Print Database Command

iSeries Database Table

**Add Record**

CUSTOMER NUMBER FIELD

LAST NAME FIELD

FIRST AND MIDDLE INITIAL FIELD

STREET ADDRESS FIELD

CITY FIELD

STATE ABBREVIATION FIELD

ZIP CODE FIELD

CREDIT LIMIT FIELD

CHARGE CODE FIELD

BALANCE DUE FIELD

CREDIT DUE FIELD

## Database Table – Update Record

IBM WebSphere Portal - Microsoft Internet Explorer

File Edit View Favorites Tools Help

Back Forward Stop Search Favorites Media Print

WebSphere Portal

Welcome My Work My Finances My Newsroom My iSeries My Favorites

5250 iFrame Portlets Files Print Database Command

iSeries Database Table

**Update Record**

CUSTOMER NUMBER FIELD

LAST NAME FIELD

FIRST AND MIDDLE INITIAL FIELD

STREET ADDRESS FIELD

CITY FIELD

STATE ABBREVIATION FIELD

ZIP CODE FIELD

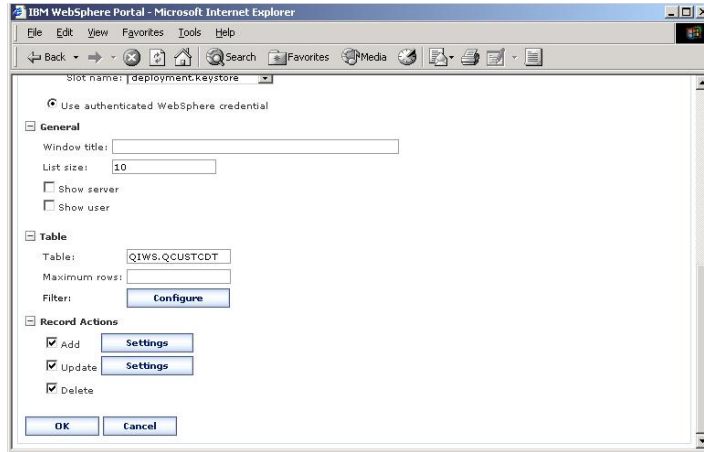
CREDIT LIMIT FIELD

CHARGE CODE FIELD

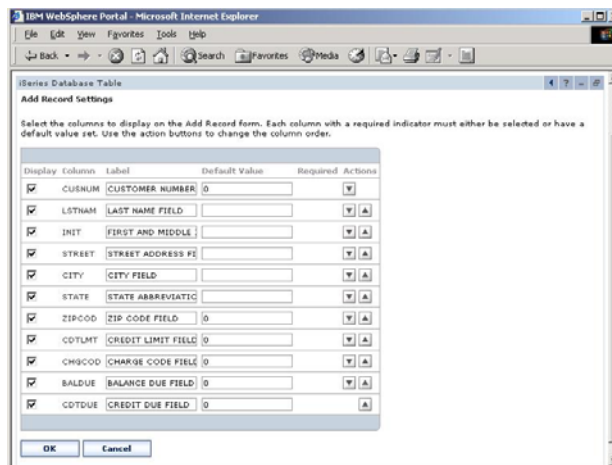
BALANCE DUE FIELD

CREDIT DUE FIELD

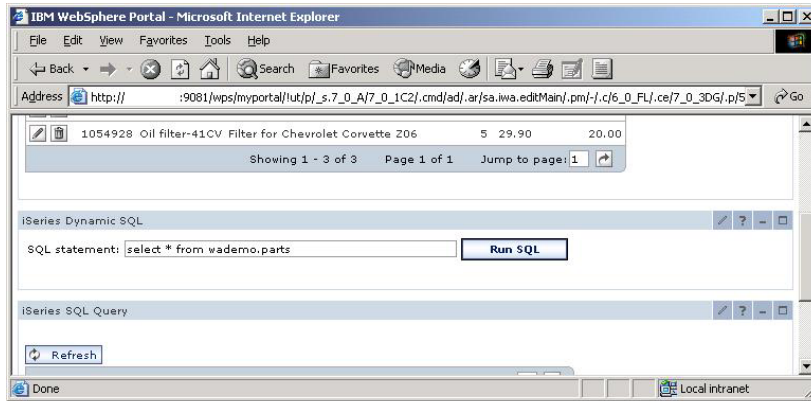
## Database Table – Customizing



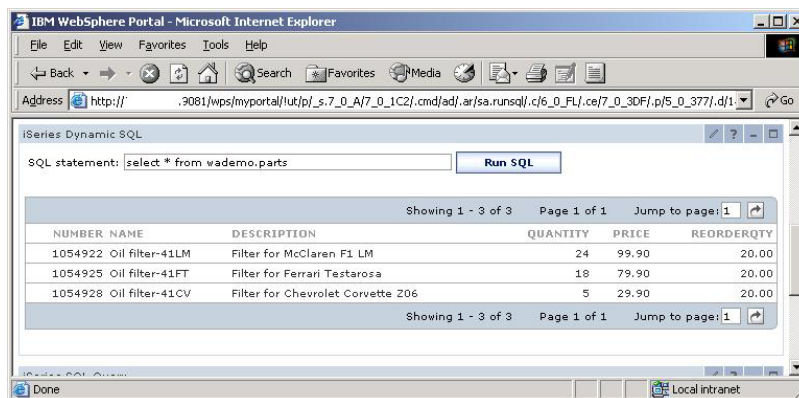
## Database Table – Customizing Add Record



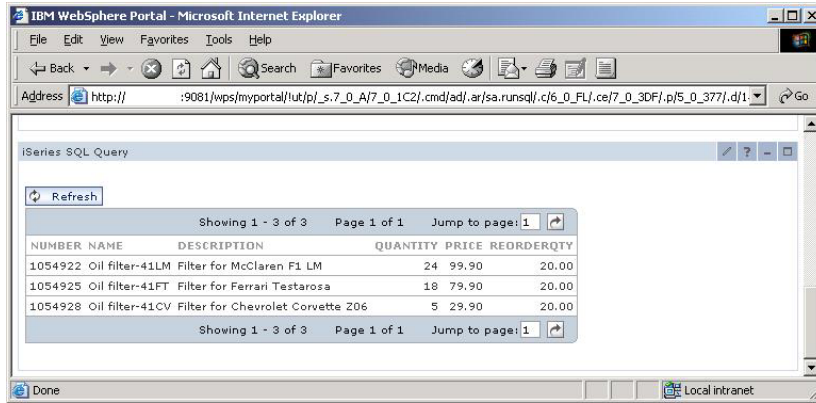
## Dynamic SQL Query



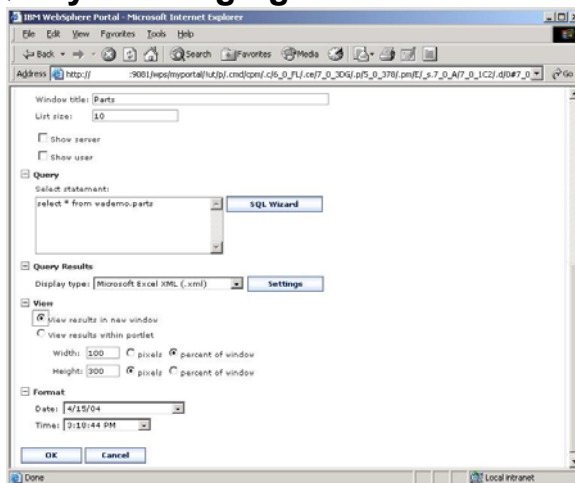
## Dynamic SQL Query - continued



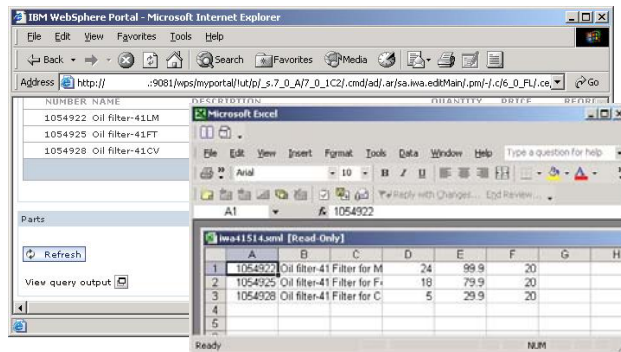
## SQL Query – Default view



## SQL Query – Changing the view



## SQL Query – Tailored view



## Summary

iSeries Access for Web Database:

- Is part of the iSeries Access for Web product
- Runs completely on the iSeries Server
- Can be accessed via a Web Browser
- Uses JDBC for DB2 UDB connectivity
- Allows you to work with SQL Tables. Including inserting, updating, and deleting records. You may also view the entire table.
- Has an interface to run SQL statements
- Has a graphical SQL Wizard to help you build SQL SELECT statements.
- Supports many data formats for displaying and emailing SQL Output
- May be used to copy data to iSeries tables
- Capable of Importing Client Access Data Transfer requests
- Robust interface for managing SQL requests
- Fully Customizable



## Questions?

© 2005 IBM Corporation



PAGE 109



## Trademarks and Disclaimers

© IBM Corporation 1994-2005. All rights reserved.

References in this document to IBM products or services do not imply that IBM intends to make them available in every country.

The following terms are trademarks of International Business Machines Corporation in the United States, other countries, or both:

AS/400	e-business on demand	OS/400
AS/400e	IBM	i5/OS
eServer	IBM (logo)	DB2
@server	iSeries	WebSphere

Rational is a trademark of International Business Machines Corporation and Rational Software Corporation in the United States, other countries, or both. Java and all Java-based trademarks are trademarks of Sun Microsystems, Inc. in the United States, other countries, or both. Microsoft, Windows, Windows NT, and the Windows logo are trademarks of Microsoft Corporation in the United States, other countries, or both. Intel, Intel Inside (logo), MMX and Pentium are trademarks of Intel Corporation in the United States, other countries, or both. UNIX is a registered trademark of The Open Group in the United States and other countries. SET and the SET Logo are trademarks owned by SET Secure Electronic Transaction LLC. Other company, product or service names may be trademarks or service marks of others.

Information is provided "AS IS" without warranty of any kind.

All customer examples described are presented as illustrations of how those customers have used IBM products and the results they may have achieved. Actual environmental costs and performance characteristics may vary by customer.

Information concerning non-IBM products was obtained from a supplier of these products, published announcement material, or other publicly available sources and does not constitute an endorsement of such products by IBM. Sources for non-IBM list prices and performance numbers are taken from publicly available information, including vendor announcements and vendor worldwide homepages. IBM has not tested these products and cannot confirm the accuracy of performance, capability, or any other claims related to non-IBM products. Questions on the capability of non-IBM products should be addressed to the supplier of those products.

All statements regarding IBM future direction and intent are subject to change or withdrawal without notice, and represent goals and objectives only. Contact your local IBM office or IBM authorized reseller for the full text of the specific Statement of Direction.

Some information addresses anticipated future capabilities. Such information is not intended as a definitive statement of a commitment to specific levels of performance, function or delivery schedules with respect to any future products. Such commitments are only made in IBM product announcements. The information is presented here to communicate IBM's current investment and development activities as a good faith effort to help with our customers' future planning.

Performance is based on measurements and projections using standard IBM benchmarks in a controlled environment. The actual throughput or performance that any user will experience will vary depending upon considerations such as the amount of multiprogramming in the user's job stream, the I/O configuration, the storage configuration, and the workload processed. Therefore, no assurance can be given that an individual user will achieve throughput or performance improvements equivalent to the ratios stated here.

Photographs shown are of engineering prototypes. Changes may be incorporated in production models.

© 2005 IBM Corporation



PAGE 110

