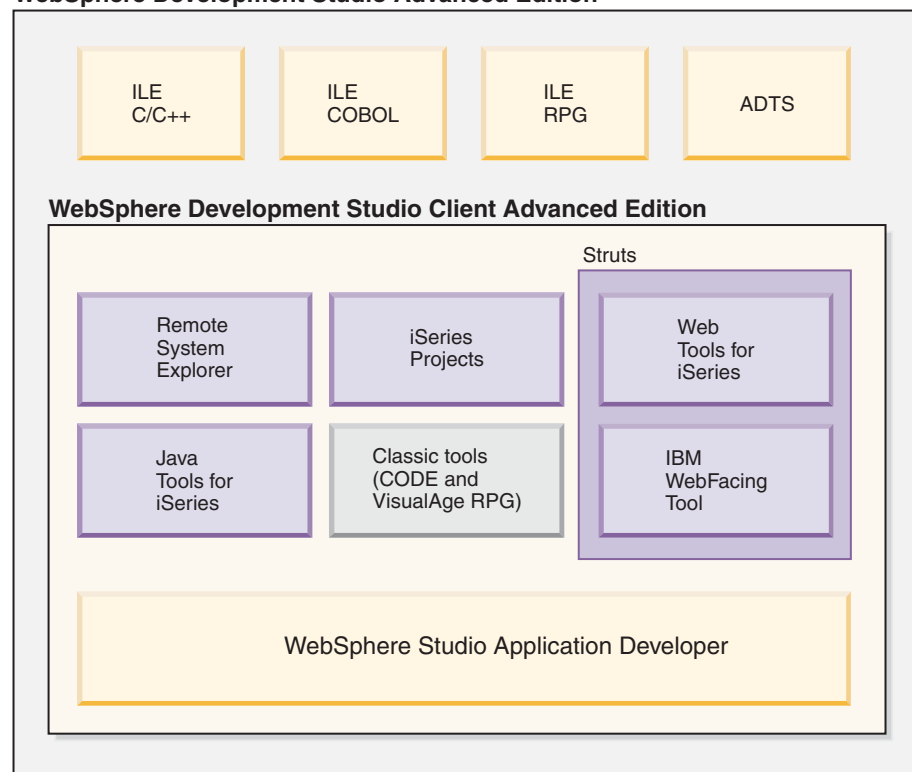


# WebSphere Development Studio Client Advanced Edition for iSeries, Version 5.0

## Highlights

- *Optimize and simplify J2EE™ application development*
- *Develop new Web applications with Java™ technology or RPG and COBOL languages using WebSphere software*
- *Web-enable existing interactive applications quickly and cost effectively with the IBM WebFacing Tool*
- *Full Enterprise JavaBeans™ 2.0 support including EJB Query Language*

### WebSphere Development Studio Advanced Edition



## Takes e-business for iSeries to the next level

WebSphere Development Studio Client Advanced Edition for iSeries leverages the capabilities of WebSphere Studio Application Developer to optimize and simplify J2EE application development. This product features best practices, templates, code generation, and one of the most comprehensive development environments in its class. It includes the iSeries suite of tools for traditional, client/server and e-business development.

# WebSphere Development Studio Client for iSeries

IBM created a comprehensive toolset to help you leverage the iSeries system and take advantage of business opportunities faster. The suite inherits improved Web and Java enterprise development capabilities from WebSphere Studio Application Developer, Version 5.0. You can create, test, deploy, and maintain sophisticated e-business and J2EE applications with little Java, Web, or Web Services programming.

## Use Web Services

As a programmer, you can now take advantage of the pools of resources created by the widespread use of the Internet. Now available to you are Web Services, which are available to you which fulfill some of your fundamental programming tasks, modules exist that can be plugged right into your application development project. You don't have to settle for being a consumer of these services: there are wizards that help you create Web Services yourself, based on the application modules you've created—in Java, RPG, or COBOL.

## Advanced function and enhanced value

### Productive

- Build J2EE applications with HTML, JSP, servlets, and EJBs quickly and easily using wizards and code generators
- Quickly test applications on the fly with the built-in test environment
- Simple remote deployment and testing
- Detect application performance issues early in the development cycle by using the graphical Java Performance Profiling and Tracing tools

### Flexible

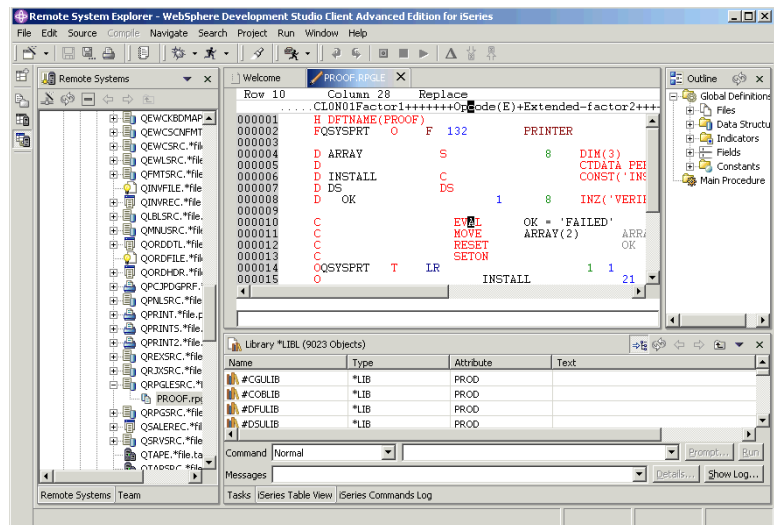
- The Eclipse integrated development environment reduces the learning curve by providing a consistent interface for developing iSeries server applications and e-business applications
- Seamless integration with best-of-breed tools from key IBM and iSeries partners to support end-to-end application development life cycle.

### Comprehensive

- Delivers the most integrated client and server development environment for J2EE and Web services applications so you can focus on application development rather than tools integration
- Consolidates the standard set of application development tools for iSeries server and e-business development into one comprehensive, integrated, and value-priced iSeries product.

### Innovative

- Shorten testing time and quicken development with the unit test environment where you can test on the fly as you develop applications



# What's new this release?

You get:

- The ability to plug in third party tools based on the Eclipse platform to extend the Remote System Explorer and iSeries projects
- Better editing functions in the Remote System Explorer support syntax checking, program verification, F1 support along with many additional PDM functions including library list manipulation and the iSeries Table view
- Straightforward deployment to IBM WebSphere Application Server for iSeries version 5.0 Advanced and Express
- Enhanced style sheets for the IBM WebFacing Tool
- Simplified customization of WebFacing Tool applications with Web development tools for iSeries, including integration with Data and Flow
- Support for the Struts builder and Struts development tools, integrated specifically with the WebFacing Tool and Web tools for iSeries
- A Web services client test environment
- The new iSeries debugger that enables you to detect and diagnose errors in code developed with OS/400 ILE and non-ILE languages (RPG, COBOL, CL, C, and C++)
- The Profiling perspective to trace and determine performance issues for iSeries Java programs
- Updates to Page Designer
- Comprehensive online help that now opens in a separate window, so that you can re-size and reposition the help to appear beside the user interface while you work
- Built-in test environment where, in the Advanced Edition, you can test J2EE artifacts, and configure other local or remote servers for integrated testing and debugging of J2EE applications, providing support for Apache Tomcat, WebSphere Application Server version 4.0 and version 5.0 run-time environments.

Plus, only in the Advanced Edition:

- Support for J2EE version 1.3 - Enterprise Java Beans version 2.0, Servlets version 2.3, and JSP 1.2 specification.
- Concurrent support for WebSphere Application Server Version 4.0 (J2EE 1.2) and WebSphere Application Server Version 5.0 (J2EE 1.3).
- EJB to RDB mapping that provides the model, run-time environment, and interface for editing the mapping between EJBs and relational database tables.
- Support for EJB Query language, CMP 2.0, and Message-driven Java beans.
- Editors for deployment descriptors (ejb-jar.xml and application.xml).
- Built-in test environment where you can test J2EE artifacts, and configure other local or remote servers for integrated testing and debugging of J2EE applications, providing support for Apache Tomcat, WebSphere Application Server version 4.0 and version 5.0 run-time environments.
- A new iFrame portlet that provides an interface to wrap an existing Web application for use on a portal
- Custom tags and run-time extensions for the WebFacing Tool
- Support for viewing and printing spooled files
- Struts-compliant code generated by the WebFacing Tool conversion process

# IBM WebSphere Development Studio Client Advanced Edition for iSeries at a glance

---

## Hardware requirements

---

### Host

- iSeries and AS/400 RISC models (If deploying applications to the WebSphere Application Server, please refer to the WebSphere Application Server documentation for minimum iSeries hardware requirements.)

### Workstation

- Intel Pentium II (Pentium III 500 MHz or faster recommended)
- 512 MB RAM (768 MB RAM recommended)
- 1650 MB free hard drive space (an additional 700 MB hard drive space is temporarily required during installation)
- SVGA display 800 x 600 (1024 x 768 recommended)
- CD-ROM or DVD drive
- Mouse or pointing device
- Support for a communications adapter

---

## Software requirements

---

### Host

- OS/400 V5R1 or later
- All prerequisite Program Temporary Fixes (PTFs). PTF information is available at:  
<http://www.ibm.com/software/ad/series/support/>
- OS/400 is only required if the programming objects are located on the iSeries server or the application contains backend code on the iSeries server

### Workstation

- For Windows NT: Server or Workstation 4.0; Service Pack 6a or higher
- For Windows 2000: Professional, Server, or Advanced Server; Service Pack 1 or higher
- For Windows XP: Professional, Server, or Advanced Server, Service Pack 1 or higher
- Microsoft Internet Explorer 5.5, Service Pack 1 or higher



© Copyright IBM Corporation 2003

IBM Corporation  
Software Group  
8200 Warden Avenue  
Toronto, Ontario, Canada  
L6G 1C7

All Rights Reserved

AS/400, the e-business logo, IBM, the IBM logo, OS/400, VisualAge, and WebSphere are trademarks or registered trademarks of International Business Machines Corporation in the United States, other countries, or both.

Intel and Pentium are trademarks of Intel Corporation in the United States, other countries, or both.

Java and all Java-based trademarks and logos are trademarks of Sun Microsystems, Inc. in the United States, other countries, or both.

Microsoft, Windows, and WindowsNT are trademarks of Microsoft Corporation in the United States, other countries, or both.

UNIX is a registered trademark of The Open Group in the United States, other countries, or both.

Other company, product, and service names may be trademarks or service marks of others.