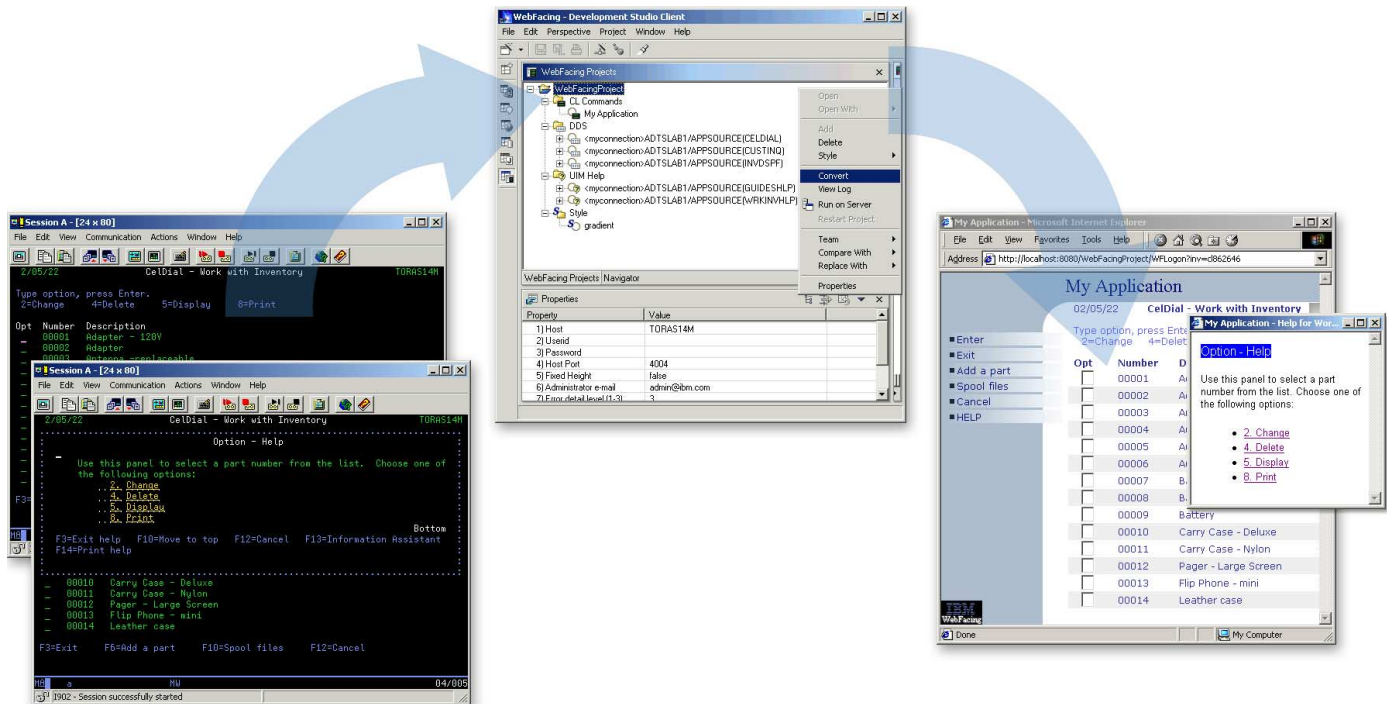


WebSphere Development Studio Client for iSeries, Version 4.0

Highlights

- **Web-enable existing interactive applications quickly and cost-effectively with IBM WebFacing Tool**
- **Generate Java code easily to Web-enable your RPG applications**
- **Work with other integrated Eclipse-based tools**
- **Develop new Web applications with Java technology or RPG and COBOL languages using WebSphere software from IBM**
- **Help developers make a fast transition to e-business application development**



IBM WebSphere Development Studio Client for iSeries is a toolset to help you quickly and easily develop e-business applications while leveraging and extending your current investments.

Leverage IBM @server iSeries system reliability, security and scalability

IBM WebSphere® Development Studio Client for iSeries™ allows rapid development of e-business applications that run on IBM @server iSeries systems. iSeries servers run the proven IBM OS/400® operating system and support RPG and COBOL language business logic. More and more developers are redeploying UNIX® and Microsoft® Windows NT® technology-based e-business applications to iSeries servers to help enable e-commerce security, system dependability and around-the-clock availability for their Web sites.

WebSphere Development Studio Client for iSeries

IBM created a comprehensive toolset to help you leverage the iSeries system and take advantage of e-business opportunities faster. WebSphere Development Studio Client for iSeries is based on IBM WebSphere Studio Site Developer Advanced, Version 4.0.3, which is Eclipse technology-based, and includes:

- *A Java™ development tool*
- *A Web development environment*
- *XML tools*
- *Web services*
- *Database support*

WebSphere Development Studio Client for iSeries features enhancements that improve the development of iSeries host-based applications and extend their functions into the e-business world.

These enhancements are:

- *Remote system explorer*
- *IBM WebFacing Tool*
- *IBM CoOperative Development Environment (CODE)*
- *IBM VisualAge® RPG*

WebSphere Studio Site Developer Advanced, Version 4.0.3

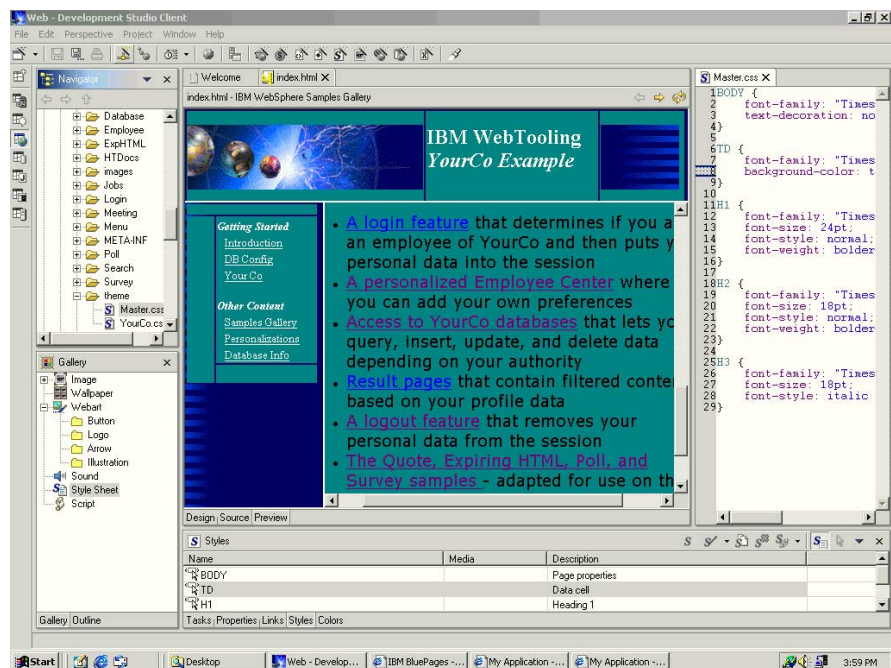
WebSphere Studio Site Developer Advanced, Version 4.0.3 enables Web site development with easy-to-use tools, wizards and templates. You can create JSP components or add them to existing Web sites. Code new HyperText Markup Language (HTML) and Dynamic HyperText Markup Language (DHTML), and create new applets and graphical image format (GIF) animation.

With WebSphere Studio Site Developer Advanced, you get a common look and feel, one set of access methods and a comprehensive set of extensions. WebSphere Studio Site Developer Advanced offers an integrated development environment (IDE). Within an IDE you can create Web development projects and can easily group all of your Web site files into a single project for quick, convenient access and management. You can publish a whole project to your Web server and register virtually any tool for any file type.

The IBM WebSphere Studio page designer component offers what-you-see-is-what-you-get (WYSIWYG) editing of HTML and JSP code. WebSphere page designer component includes a toolbar to convert commonly used HTML and JavaScript code into application code using point-and-click action during application development.

The page designer toolbar features wizards that enable JSP code generation to set Web site attributes. HTML and JavaScript controls, smart entry fields, labels, buttons and subfiles let you quickly add Web functionality to applications.

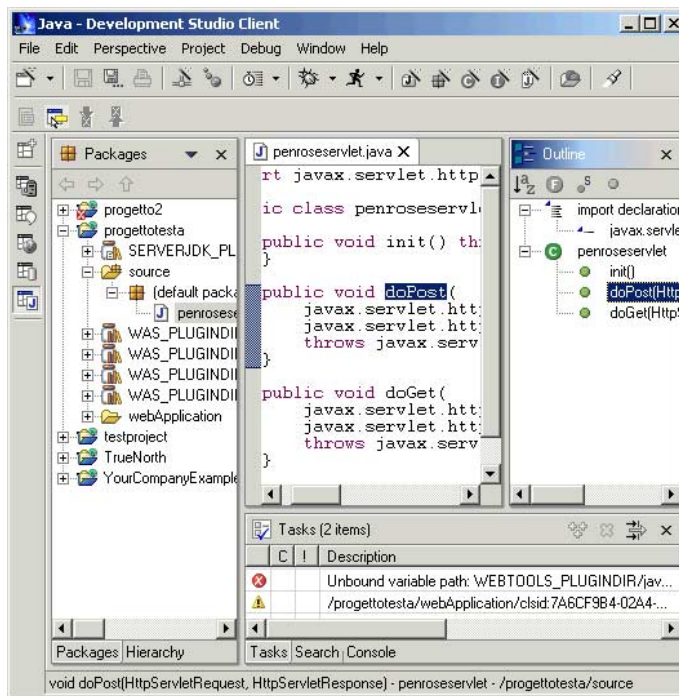
WebSphere Studio Site Developer Advanced provides the essential tools required to build portable, cross-platform, e-business applications. It includes the award-winning Java IDE, wizards and an enhanced toolkit for iSeries systems that help you generate servlets, JSP and HTML prototypes.



The IBM WebSphere Studio page designer component offers WYSIWYG editing of HTML and JSP code.

The comprehensive IDE offers:

- *A workbench*
- *A built-in editor and debugger*
- *An incremental, automatic compiler*
- *Support for Java 2 Platform technology, including classes, JavaBeans components and servlets*
- *Support for third-party source-control management tools*



Java technology-based tools featured in an IDE allow you to build portable, cross-platform, e-business applications, which can access iSeries system data, applications and key functions.

The Java iSeries extension provides access to iSeries system data, applications and key functions. You can use built-in support for remote export, compile, run and debug functions to easily deploy Java applications on iSeries servers. If you're new to Java technology, WebSphere Studio Site Developer Advanced offers scenarios to help you learn how to build solutions by customizing prebuilt applications. With these ready-to-deploy applications you can rapidly build, test and publish e-business applications to an application server.

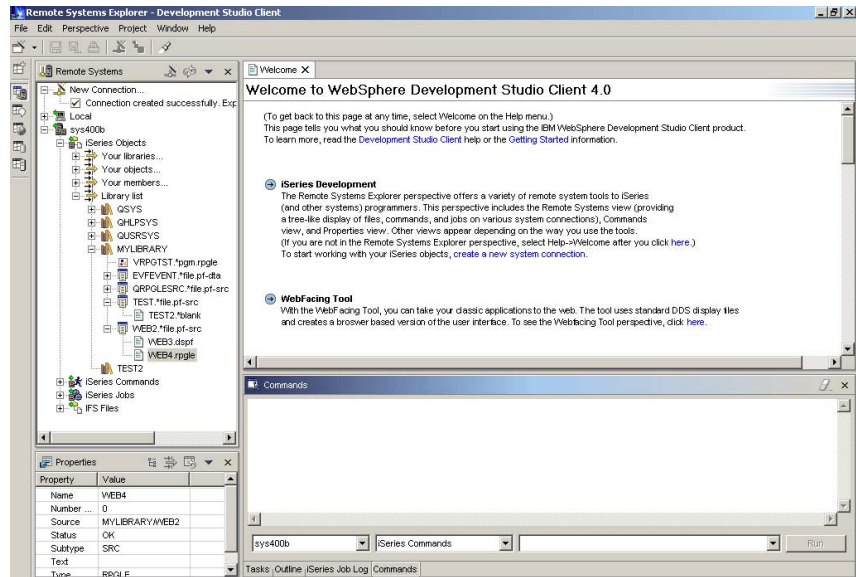
Remote system explorer

WebSphere Development Studio Client for iSeries includes a generic remote systems framework that supports views, tools and tool extensions for working with the iSeries servers to develop host-based applications. The remote systems framework makes it easy to connect to your iSeries servers and the remote system explorer allows you to develop new applications for them.

IBM WebFacing Tool

With the IBM WebFacing Tool component of WebSphere Development Studio Client for iSeries, you can quickly and cost-effectively bring your applications to the Web. And help your business make the transition to an application development strategy that can give you a competitive edge. IBM WebFacing Tool provides an effective way to create Web interfaces for existing 5250 applications. With IBM WebFacing Tool, you can create industry-standard JavaServer Pages (JSP) components and JavaBeans components from the display file data description specification (DDS) source at development time. You can have a simple, cost-effective way to Web-enable many 5250 applications.

The process requires minimal change to the application's business logic, no separate tool costs and no runtime charges. You can rapidly deploy generated JSP components and JavaBeans components to an application server, providing a new Web interface for your application.



IBM WebFacing Tool can quickly and cost-effectively bring your applications to the Web.

With IBM WebFacing Tool, the same application supports both 5250 and Web browser interfaces. At runtime, the system determines whether the 5250 or the Web interface is being used. For instance, an application started from a 5250 display is automatically shown in a 5250 display. When the same application is started in a Web browser, the input and output is rendered in a Web browser using generated JSP and JavaBeans components.

CoOperative Development Environment

CoOperative Development Environment (CODE) is a full-featured development environment for writing host applications for iSeries systems. The comprehensive CODE tool suite features workstation-based editing, syntax checking, program verification, compiling and enhanced, multitiered debugging support for your iSeries applications. CODE supports RPG, COBOL, C, C++, control language (CL), DDS and Java technology.

VisualAge RPG

VisualAge RPG features point-and-click simplicity for RPG programmers at the workstation. Use VisualAge RPG to write RPG applications that run on Microsoft Windows® but access iSeries data and programs nondisruptively. Your new applications can be compiled into Windows executables, Java applications or applets. You can edit, compile, debug and execute RPG through an easy-to-use GUI. VisualAge RPG includes a GUI builder to help you create your own interface layout. Using an integrated editor and debugger—like those used by CODE—you can dynamically write and check RPG code while you visually build your application.

WebSphere software and iSeries servers facilitates e-business development

With WebSphere Development Studio Client for iSeries, including IBM WebFacing Tool, you can rapidly and cost-effectively Web-enable existing applications and create new e-business applications. WebSphere software from IBM capitalizes on the reliability, security and scalability of iSeries servers to produce the premier toolset for e-business application development.

For more information

To learn more about WebSphere Development Studio Client for iSeries, visit **ibm.com/software/ad/wds400**.

IBM WebSphere Development Studio Client for iSeries at a glance

Hardware requirements

Workstation (minimum requirements)

- Intel® Pentium® II, 600MHz processor or faster recommended
- 256MB (512MB recommended)
When using the IBM WebSphere Application Server test environment, a minimum of 512MB required; when using the CODE and VisualAge RPG classic tools, a minimum of 128MB required
- 1.4GB hard drive space
- Additional 500MB of temporary hard drive space needed during product installation
- VGA display 800 x 600 (1024 x 768 recommended), 256 colors
- CD-ROM or DVD drive
- Mouse or pointing device

iSeries system

- iSeries and IBM AS/400® RISC models
If WebSphere Application Server on iSeries is used for applications built with WebSphere Development Studio Client components, refer to the WebSphere Application Server documentation for minimum iSeries hardware requirements.

Software requirements

Workstation

For Microsoft Windows 98, Windows ME or Windows XP

- Microsoft Internet Explorer 5.5 Service Pack 1 or higher

For Windows NT

- Windows NT Server or Workgroup, Version 4.0, Service Pack 6a or higher
- Microsoft Internet Explorer 5.5 Service Pack 1 or higher

For Windows 2000

- Windows 2000 Professional, Server or Advanced Server, Service Pack 1 or higher
- Microsoft Internet Explorer 5.5 Service Pack 1 or higher

iSeries system

- OS/400, Version 5 Release 1 or higher; and if IBM WebFacing Tool and remote system explorer, additional PTFs (PTF information available on ibm.com/software/ad/wds400)
 - OS/400 if programming objects are located on the iSeries server, or applications contain back-end code on the iSeries server
-



© Copyright IBM Corporation 2002

IBM Corporation
Software Group
Route 100
Somers, NY 10589
U.S.A.

Printed in the United States of America
06-02
All Rights Reserved

AS/400, the e-business logo, IBM, the IBM logo, iSeries, OS/400, VisualAge and WebSphere are trademarks or registered trademarks of International Business Machines Corporation in the United States, other countries or both.

Intel and Pentium are trademarks of Intel Corporation in the United States, other countries or both.

Microsoft, Windows and Windows NT are trademarks of Microsoft Corporation in the United States, other countries or both.

Java and all Java-based trademarks and logos are trademarks of Sun Microsystems, Inc. in the United States, other countries or both.

UNIX is a registered trademark of The Open Group in the United States and other countries.

Other company, product and service names may be trademarks or service marks of others.

 Printed in the United States on recycled paper containing 10% recovered post-consumer fiber.

