

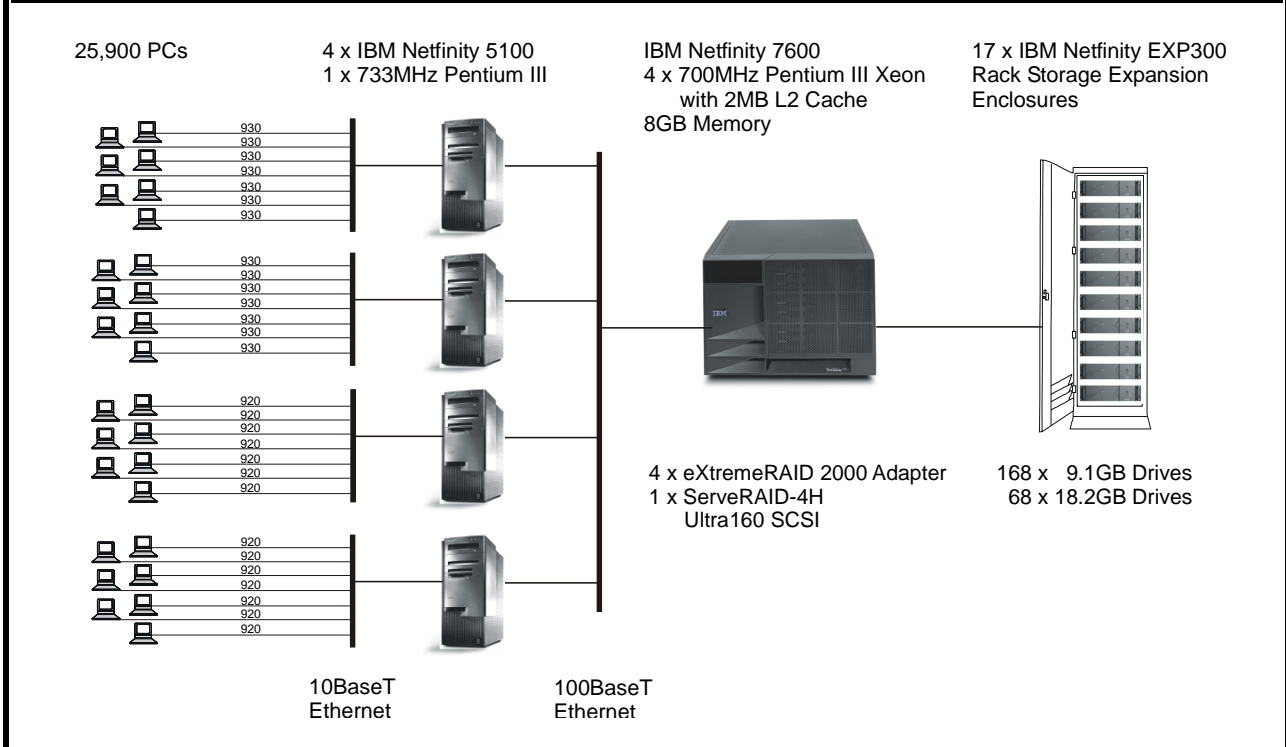
IBM Netfinity 7600 c/s

TPC-C Rev 3.5

Report Date: Oct. 25, 2000

Total System Cost	TPC-C Throughput	Price/Performance	Availability Date
\$443,463	32,377.17 tpmC	\$13.70 /tpmC	Oct. 25, 2000

Processors	Database Manager	Operating System	Other Software	Number of Users
4 Intel Pentium III Xeon 700MHz 2MB L2 Cache	Microsoft SQL Server 2000 Enterprise Edition	Microsoft Windows 2000 Advanced Server	Microsoft Visual C++ 6.0 Win32 Microsoft COM+	25,900



System Component	Qty	Server	Qty	Each of Four Clients
Processors	4	700MHz Pentium III Xeon w/2MB L2 Cache	1	733MHz Pentium III w/256KB L2 Cache
Cache				
Memory	16	512MB	2	128MB
Disk Controllers	4	Mylex eXtremeRAID 2000	1	Ultra160 SCSI Onboard
Disk Drives	1	ServeRAID-4H Ultra160	1	9.1GB Hard Disk
Total Storage	168	9.1GB (10000 rpm)		
Tape Drive	68	18.2GB (10000 rpm)		
	1	2766.4GB 10/20GB SCSI Tape Drive		

IBM Corporation	Netfinity 7600 c/s	TPC-C Revision 3.5
		Report Date: Oct. 25, 2000

Description	Order Number	Third-Party Brand	Pricing	Unit Price	Qty	Ext. Price	5-Yr. Maint.*
Server Hardware							
Netfinity 7600 700MHz/2MB Pentium III Xeon*	86655RY		1	\$9,660	1	\$9,660	\$7,995
700MHz/2MB L2 Cache Processor Upgrade	10K2332		1	3,757	3	11,271	0
512MB ECC SDRAM RDIMM Memory Kit	33L3117		1	1,940	15	29,100	0
Mylex eXtremeRAID 2000 Adapter***	E2000-4-32NB	Mylex	3	1,872	6	11,232	0
Netfinity ServeRAID-4H Ultra160 Adapter	37L6889		1	2,190	1	2,190	0
Netfinity 4.2M Ultra2 SCSI Cable	03K9311		1	113	18	2,034	0
Netfinity 10/100 Ethernet Adapter 2	34L1501		1	93	1	93	0
E54 14" (13.8" Viewable) Color Monitor*	6331B2N		1	179	1	179	270
10/20GB NS Internal SCSI Tape Drive	09N4042		1	398	1	398	0
Netfinity Rack*	9306900		1	1,560	2	3,120	2,520
Side Panel Kit	94G6669		1	185	1	185	0
Storage Hardware							
Netfinity EXP300 Rack Storage Enclosure*	35311RU		1	2,890	17	49,130	12,886
9.1GB 10K-4 Ultra160 SCSI Drive	37L7204		1	349	168	58,632	0
18.2GB 10K-4 Ultra160 SCSI Drive	37L7205		1	549	68	37,332	0
Subtotal						\$214,556	\$23,671
Server Software							
Microsoft SQL Server 2000 Enterprise Edition	810-00846	Microsoft	2	16,541	4	\$66,164	\$0
Microsoft Windows 2000 Advanced Server	C10-00475	Microsoft	2	2,399	1	2,399	0
Five-Year Maintenance for Software		Microsoft	2	10,475	1		10,475
Subtotal						\$68,563	\$10,475
Client Hardware							
IBM Netfinity 5100 / 733MHz/256KB Pentium III*	86582RY		1	2,205	4	\$8,820	\$22,780
9.1GB 10K Ultra160 SCSI Drive	37L7204		1	349	4	1,396	0
128MB 133MHz ECC SDRAM RDIMM	33L3123		1	279	4	1,116	0
Netfinity 10/100 Ethernet PCI Adapter	34L1501		1	93	4	372	0
E54 15" (13.8" Viewable) Color Monitor*	6331B2N		1	179	4	716	1,080
Subtotal						\$12,420	\$23,860
Client Software							
Microsoft Windows 2000 Server with COM+	C11-00821	Microsoft	2	738	4	2,952	0
Microsoft Visual C++ Professional 6.0 Win32	048-00317	Microsoft	2	549	1	549	0
Subtotal						\$3,501	\$0
User Connectivity							
8-Port 10Mbps Hub***	DEH2924	Generic	1	24	3,573	85,752	0
8-Port 10/100Mbps Nway Fast Ethernet Switch***	NX-DSS8	NETLUX	4	95	7	665	0
Subtotal						\$86,417	\$0
Total						\$385,457	\$58,006

Notes: * The standard 3-year warranty and the extended warranty on IBM hardware is for 7x24, 4-hour response time coverage. ** Five-year warranty. *** 10% or minimum 2 spares are added in place of on-site service (products have a 5-year return-to-vendor-warranty)
Pricing: 1 - Software House International; 2 - Microsoft Corp.; 3 - Mylex ; 4 - NETLUX
Audited by Bradley J. Askins of InfoSizing, Inc.

Five-Year Cost of Ownership:	\$443,463
tpmC Rating:	32,377.17
\$ / tpmC:	\$13.70

Prices used in TPC benchmarks reflect the actual prices a customer would pay for a one-time purchase of the stated components. Individually negotiated discounts are not permitted. Special prices based on assumptions about past or future purchases are not permitted. All discounts reflect standard pricing policies for the listed components. For complete details, see the pricing sections of the TPC benchmark specification. If you find that stated prices are not available according to these terms, please inform the TPC at pricing@tpc.org. Thank you.

Numerical Quantities Summary			
MQTh, Computed Maximum Qualified Throughput: % throughput difference, reported and reproducibility runs:			32,377.17 tpmC 0.08%
Response Times (in seconds)	90%	Average	Maximum
New-Order	0.74	0.41	5.11
Payment	0.64	0.32	4.18
Order-Status	0.66	0.34	5.06
Delivery (Interactive)	0.12	0.12	1.20
Delivery (Deferred)	0.40	0.23	0.91
Stock-Level	1.95	1.36	4.68
Menu	0.12	0.12	1.56
Transaction Mix (in percent of total transactions)		Total Occurrences	Percent
New-Order		971,315	44.85
Payment		931,527	43.01
Order-Status		87,600	4.05
Delivery		87,496	4.04
Stock-Level		87,668	4.05
Emulation Delay (in seconds)	Response Time		Menu
New-Order	0.1		0.1
Payment	0.1		0.1
Order-Status	0.1		0.1
Delivery	0.1		0.1
Stock-Level	0.1		0.1
Keying/Think Times (in seconds)	Minimum	Average	Maximum
New-Order	18.00 / 0.00	18.01 / 12.04	18.03 / 120.50
Payment	3.00 / 0.00	3.02 / 12.03	3.03 / 120.50
Order Status	2.00 / 0.00	2.01 / 10.05	2.02 / 100.50
Delivery	2.00 / 0.00	2.01 / 5.06	2.02 / 50.50
Stock-Level	2.00 / 0.00	2.01 / 5.04	2.03 / 50.49
Test Duration			
Ramp-up time			9 minutes
Measurement interval			30 minutes
Number of transactions (all types) completed in measurement interval			2,253,103
Ramp-down time			38 minutes
Number of checkpoints in measurement interval			1
Checkpoint interval			30 minutes