

Bluemix Quick Reference Card

cf commands

cf api

Displays or specifies the URL of the API endpoint of Bluemix.

`cf api` [https://api.stage1.ng.bluemix.net] [--skip-ssl-validation]

cf apps

Lists all applications that are in the current space.

cf bind-service

Binds a service instance to your application.

`cf bind-service` app_name service_instance

cf create-service

Creates a service instance.

`cf create-service` service_name service_plan service_instance

cf delete

Deletes an existing application.

`cf delete` app_name [-f] [-r]

cf events

Displays runtime events that are related to an application.

`cf events` app_name

cf help

Displays help information for all `cf` commands or for a specific `cf` command if the `command_name` parameter is used.

`cf help` [command_name]

cf logs

Displays the STDOUT and STDERR log streams of an application.

`cf logs` app_name [--recent]

cf marketplace

Lists all of the available services that are in the marketplace.

cf login

Logs you in to Bluemix.

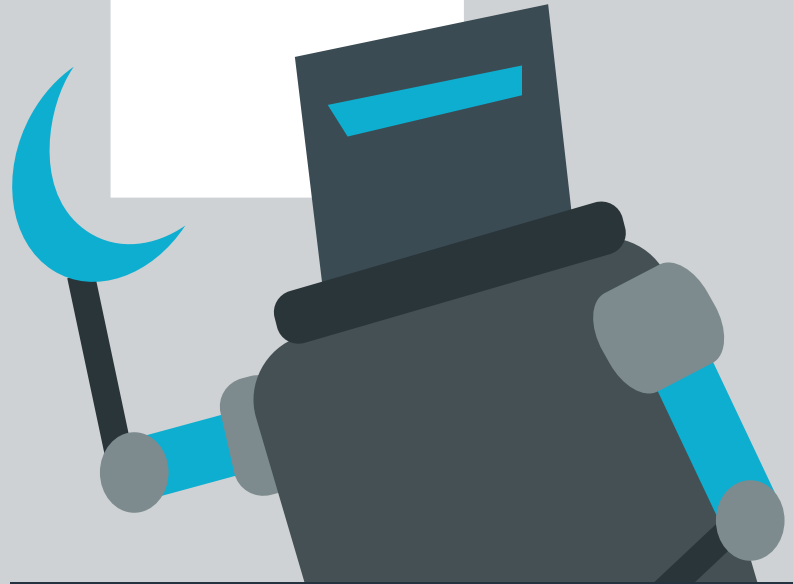
`cf login` [-a https://api.stage1.ng.bluemix.net] [-u user_name] [-p password] [-o organization_name] [-s space_name] [--sso] [--skip-ssl-validation]

Note: If you provide your password in the -p parameter of this command, your password might be recorded in the shell command history file and might be visible to other users of the system.

cf push

Deploys a new application to Bluemix, or updates an existing application in Bluemix.

`cf push` app_name [-b buildpack_name] [-c start_command] [-d domain_name] [-f manifest_path] [-i instance_number] [-k disk_limit] [-m memory_limit] [-n host_name] [-p app_path] [-s stack] [-t timeout] [--no-hostname] [--no-manifest] [--no-route] [--no-start] [--random-route]



cf scale

Displays or changes the instance number, disk space limit, or memory limit of an application.

`cf scale` app_name [-i instance_number] [-k disk_limit] [-m memory_limit] [-f]

cf services

Lists all of the service instances that are in the current space.

cf set-env

Sets an environment variable for an application.

`cf set-env` app_name var_name var_value

cf stop

Stops a running application.

`cf stop` app_name

cf -v

Displays the version of the `cf` command line interface.