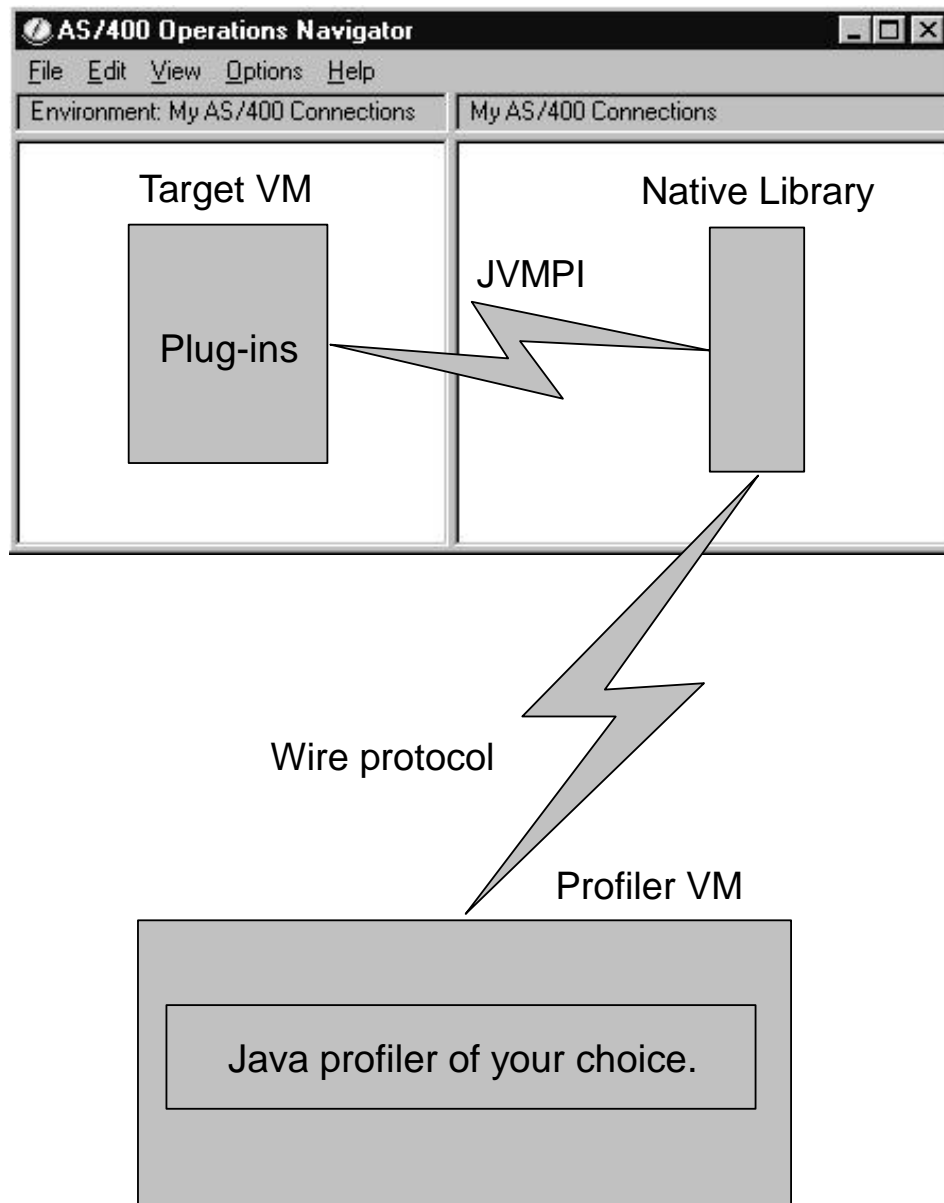


Java Virtual Machine Profiling Interface overview



Third party products include an in-process profiling agent.

Profiling may be performed over TCP sockets.

Profiler runs in it's own virtual machine.

Java Profiler

1. Apply the java profiler registry file



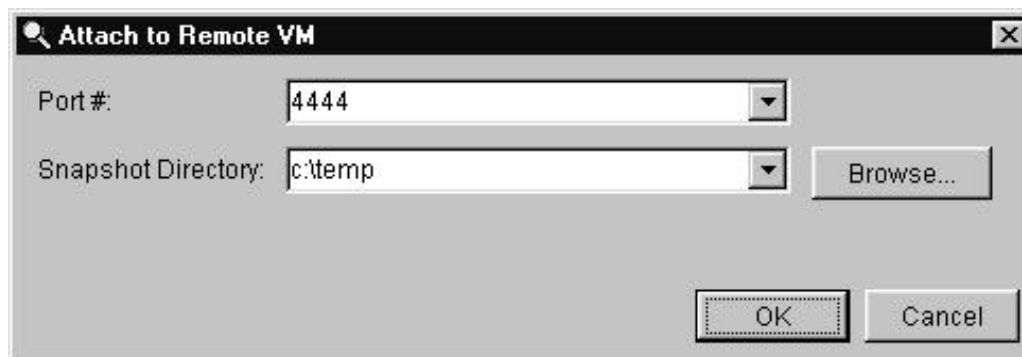
2. Start the IBM AS/400 Operations Navigator



3. Start the profiler



4. Attach the profiler to the server port



OpNav will block until the profiler attaches.

Program->Attach Remote