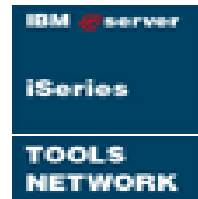


Who is LANSA?



Al Grega

Director Business Development

Al.Grega@lansa.com

(631) 447-7586

Agenda

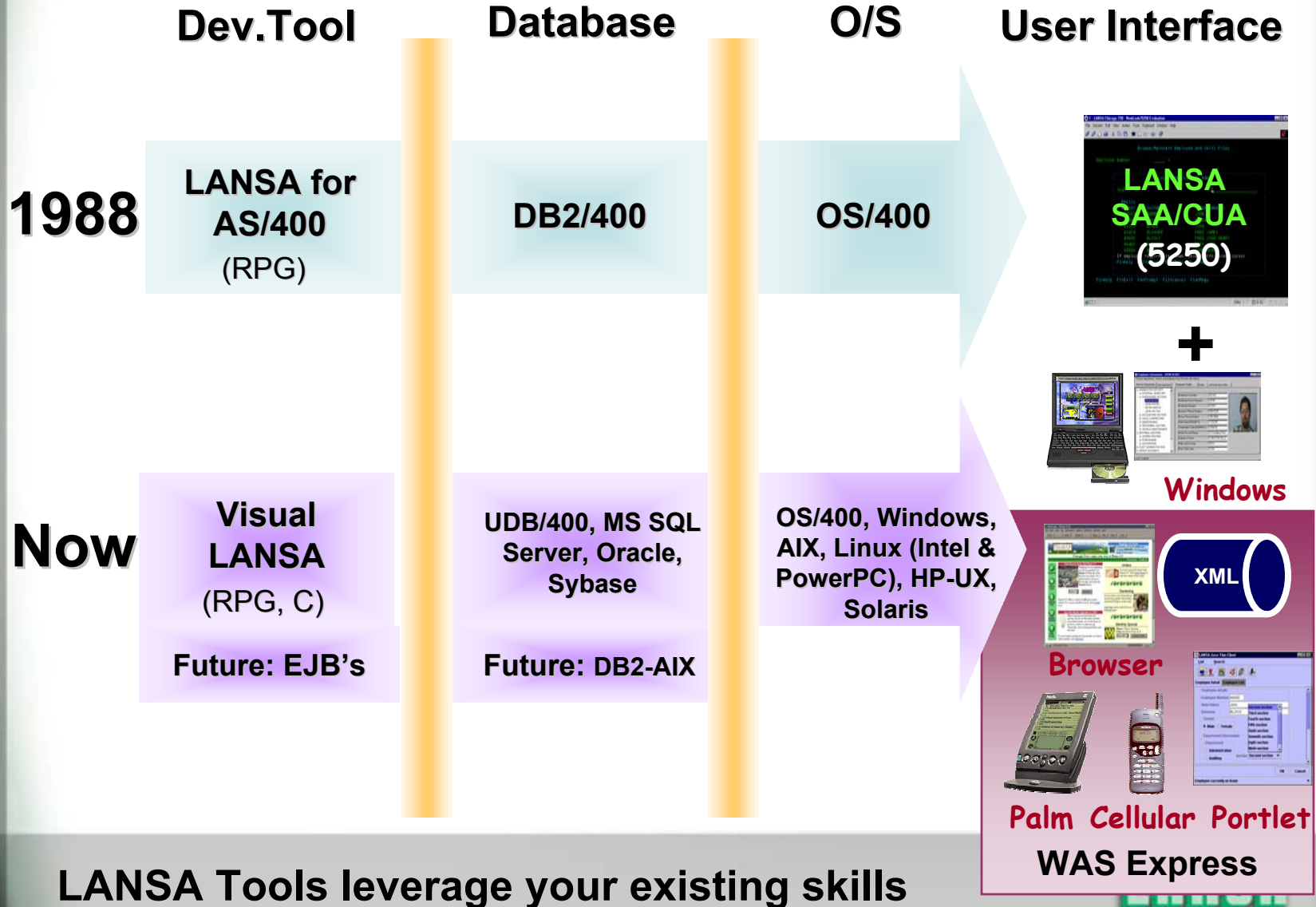
- ❑ Company Overview
- ❑ Evolving Industry Drivers
- ❑ Server Consolidation
- ❑ WebSphere and LANSA
- ❑ Summary

LANSA Company Overview

- In business for over 15 years
- Products: e-business/technology, integration solutions and application development tools
- 6600+ customers worldwide
- Distributed in 68 countries
- IBM Partnerships:
 - Partnerworld for Developers
 - Partnerworld for Software
 - Powered by WebSphere
 - Global Services Subcontractor
 - Global Finance Partner
 - Linux Leader Program
 - ISV Advantage Program
- Quick time to market with a strong ROI!



Perception vs. Reality



LANSA Product Lines



1. eBusiness Solutions:

Complete A2A & B2B Solutions



3. Application Development:

Highly Productive 4GL & Repository Development Tools



2. Technology Integration:

XML, Data Interchange & Java Services

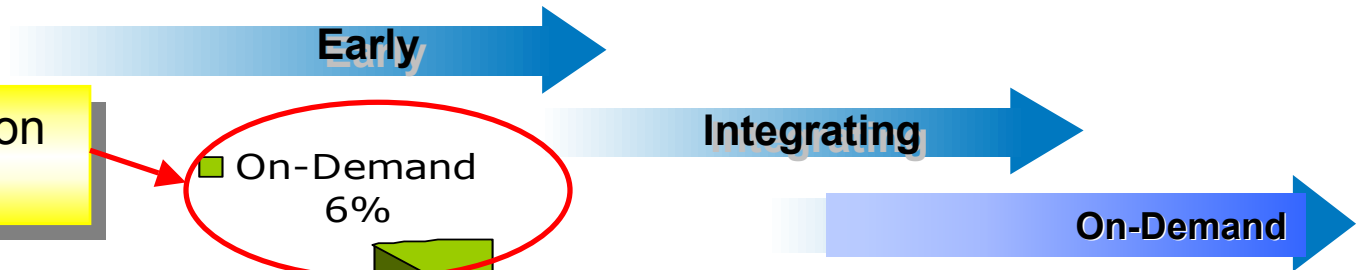


4. Data Access:

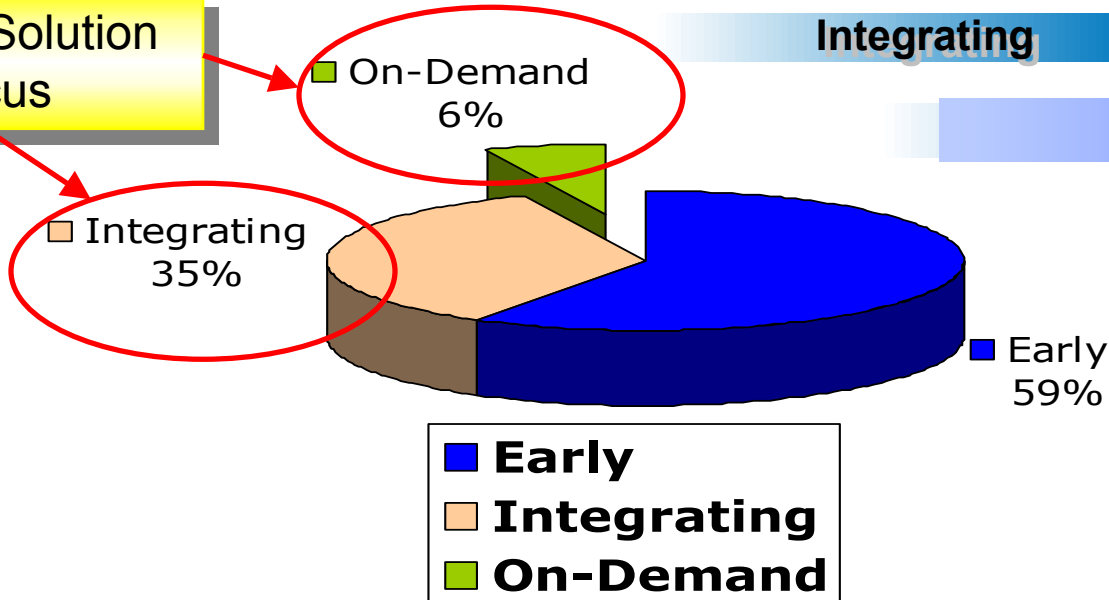
Query & Reporting Tools

Business Integration Opportunity

States of ebusiness adoption



LANSA Solution Focus



Evolving Industry Drivers

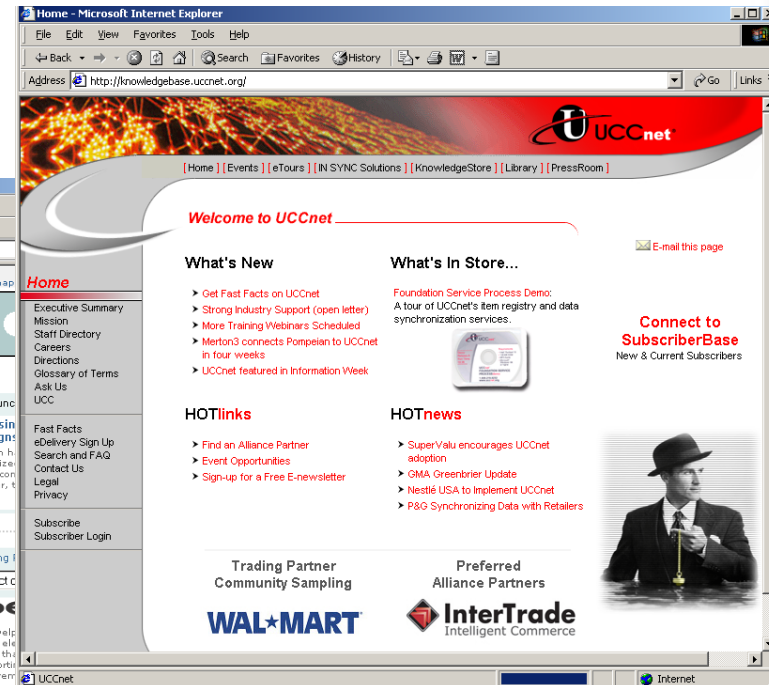
Online Insurance, HIPAA



The screenshot shows the eHealthInsurance.com website in a Microsoft Internet Explorer browser. The page features a navigation menu with options like 'Home', 'About Covisint', 'Covisint Solutions', 'Trading Partners', 'Resources', and 'Help'. A central banner for 'Covisint' is visible, along with a large image of a car wheel. Below this, there are several news items, including 'Covisint Auctions Test Drive' and 'Introducing Covisint Auction 5.0'. The website also includes a 'Who we are' section, 'Our solution suites', and a 'Press room' section.

Covisint

UCCnet & AS2



The screenshot shows the UCCnet website in a Microsoft Internet Explorer browser. The page features a navigation menu with options like 'Home', 'Events', 'eTours', 'IN SYNC Solutions', 'KnowledgeStore', 'Library', and 'PressRoom'. A central banner for 'UCCnet' is visible, along with a large image of a network diagram. Below this, there are several news items, including 'What's New' and 'What's In Store...'. The website also includes a 'Home' section, 'Executive Summary', 'Mission', 'Staff Directory', 'Careers', 'Directions', 'Glossary of Terms', 'Ask Us', 'Fast Facts', 'eDelivery Sign Up', 'Search and FAQ', 'Contact Us', 'Legal', 'Privacy', 'Subscribe', and 'Subscriber Login'.

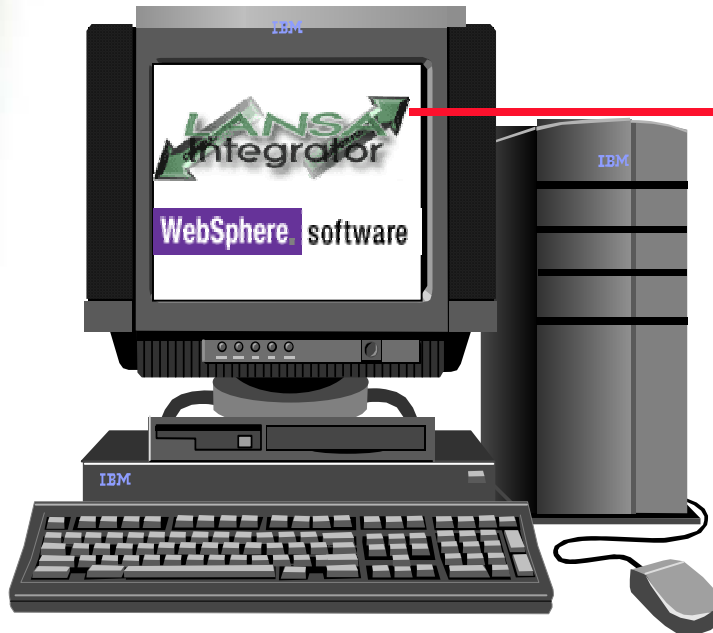
Industry *IS* standardizing on XML & EDI-INT technologies

LANSA

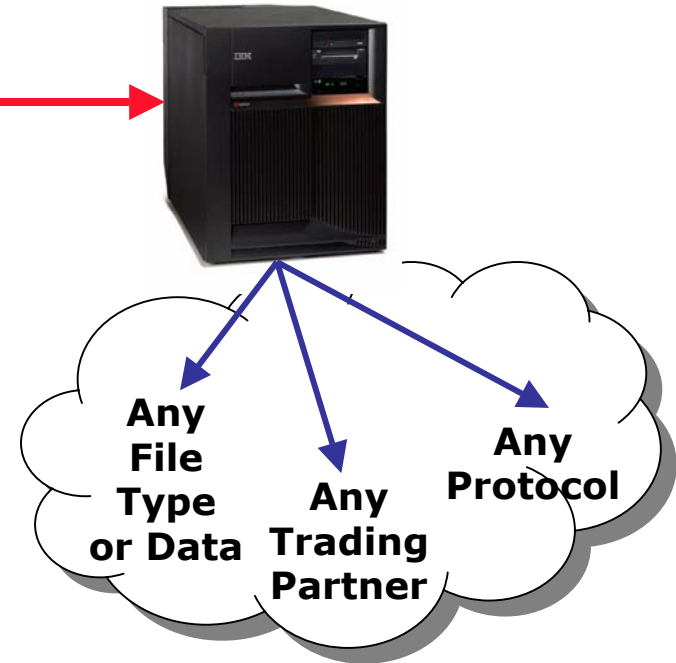
Industry Compliance

Solution	Industry	Install Base	SMB White Space
UCCNet Direct http://www.lansa.com/solutions/uccnet.htm	CPG, Distribution	H/W: iSeries, xSeries, (p-4Q03) S/W: WAS Express Avg Services: 80-160 hours	H/W: iSeries, xSeries, (p-4Q03) S/W: WAS Express Avg Services: 80-160 hours
AS2 Direct http://lansa.com/solutions/as2.htm	Retail Suppliers	H/W: iSeries, xSeries, (p-4Q03) S/W: WAS Express Avg Services: 80 hours	H/W: iSeries, xSeries, (p-4Q03) S/W: WAS Express Avg Services: 80 hours
Sell Side Direct http://www.lansa.com/products/commerceeditiondirect.htm	Mfg, Distribution (M2M Commerce)	H/W: iSeries, xSeries, (p-4Q03) S/W: WAS Express Avg Services: 80 hrs (1ea. tx)	H/W: iSeries, xSeries, (p-4Q03) S/W: WAS Express Avg Services: 80 hrs (1ea. tx)
Buy Side Direct http://www.lansa.com/products/commerceeditiondirect.htm	All (Procurement)	H/W: iSeries, xSeries, (p-4Q03) S/W: WAS Express Avg Services: 80 hrs (1ea. tx)	H/W: iSeries, xSeries, (p-4Q03) S/W: WAS Express Avg Services: 80 hrs (1ea. tx)
HIPAA Direct http://www.lansa.com/solutions/hipaa.htm	Health, Insurance	H/W: iSeries S/W: WAS Express Avg Services: 120-160 hrs	
Covisint (Services Engagement)	Auto Suppliers, Manufacturing	H/W: iSeries S/W: WAS Express Avg Services: 80-160 hrs	
Commerce Self Service http://www.lansa.com/products/commerceedition.htm	Mfg, Distribution	H/W: iSeries, xSeries, (p-4Q03) S/W: WAS Express Avg Services: 80-160 hours	H/W: iSeries, xSeries, (p-4Q03) S/W: WAS Express Avg Services: 80-160 hours

Business Integration Middleware



WebSphere Development Studio Client



LANSA Integrator

- ***100% Java Services***
- ***Integrated w/WebSphere Studio***
- ***Works with WebSphereMQ***
- ***Callable from RPG***

ERP Integration



Spectrum

daly.commerce

Application Plus



frontier



DPS/9000

JD Edwards

MAC-PAC

from TDCI



ASW

Custom Synon



DMAS



Custom RPG

JOBSCOPE software

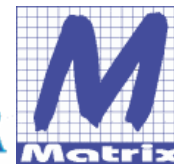


Custom LANSA

NCS



MIS Spirit/2000



Geac
JBA/System21

PRMS™

MODULAR SOFTWARE LTD.

LANSA Solutions have been integrated with over 20
ERP Solutions

LANSA

ERP Mapping

← Back → ↻ 🏠 🔍 Search 📖 Favorites 🌐 Media 🖨️ 📧

Maintain Environment Details

Environment ID: **STGV22SCH - Stage V2.2 Schema**

Map to ERP -- Select ERP--

Map to ERP dropdown options: BPCS 6.x, Custom ERP, Daly.Commerce, HFA Frontier v1.1, JBA System/21, JD Edwards OneWorld, JD Edwards World v7.3, Lawson, MAPICS, PRISM v8.4, SAP for iSeries

	Value
Command ID	<input type="text" value="CMD"/>
Message Id	<input type="text" value="LNSUD"/>
Communication	<input type="text" value="2.2"/>
Transaction	<input type="text" value="TRANS"/>
Document Global Location Number	<input type="text" value="0154789654586"/>
Document Status	<input type="text" value="ORIGINAL"/>
Document Structure Version	<input type="text" value="2.2"/>
Document Unique Creator Identification	<input type="text" value="200"/>
Entity Global Location Number	<input type="text" value="0154789654586"/>
Entity Unique Creator Identification	<input type="text" value="100"/>
Item Global Location Number	<input type="text" value="0154789654586"/>
UCCnet Deployment Platform	<input type="text" value="I"/>
UTAPI Properties file	<input type="text" value="UTAPI22"/>
Representing Party Global Location Number	<input type="text" value="0154789654586"/>
Use ERP Item Master File	<input type="text" value="Y"/>
Connect with User Id	<input type="text" value="rmercerbeta"/>

LANSA UCCnet Direct

Advanced ERP Mapping speeds ROI

LANSA

LANSA Customers



- SAP
- 2,000 GTIN's



- Custom Cobol & Synon
- 12,000 GTIN's

- JDE One World
- lawn sprinklers, irrigation and landscape products



- JDE World Backend
- Electrical Fans



Dean Foods Company

- BPCS, JDE, ROSS, etc.
- 50,000 GTIN's

- Lawson Backend
- Latino Foods
- 3,000 GTIN's



LANSA ISV Partner Solutions

Solution	Industry	Install Base	White Space
Advanced Commerical Banking System (Alltel) www.acbs.com	Finance	H/W: iSeries	H/W: iSeries, pSeries
Distribusmart (CB Software) www.cbsoftware.com	Distribution	H/W: iSeries	H/W: iSeries
EGS (Lyles Data) www.lylesdata.com	Local Government	H/W: iSeries, xSeries	H/W: iSeries, xSeries
Home Healthcare (Dynax) www.dynax.com	Healthcare	H/W: iSeries	H/W: iSeries
IPMS, LMS IV (Rippe & Kingston) www.rippe.com	Legal	H/W: iSeries	H/W: iSeries
LMS ResNet, Showgate (IAD) www.iadusa.com	Travel, Hospitality	H/W: iSeries	H/W: iSeries
Route/Distribution Management (NCS) www.ncssuite.com	Route Trade Distribution	H/W: iSeries	H/W: iSeries, xSeries, pSeries
Strategic Motor Vehicle Systems (SBS) www.sbsusa.com	Auto (Dist. & Service)	H/W: iSeries	H/W: iSeries (xSeries in Development)
Timberline DMS (Timberline) www.timberlineconsulting.com	Fresh Food Distribution	H/W: iSeries	H/W: iSeries
System2000 for the Web (VAI) www.vaihome.com	Wholesale, Mfg, Retail	H/W: iSeries	H/W: iSeries

And many more solutions...

<http://www.lansa.com/solutions/index.htm>



Server Consolidation



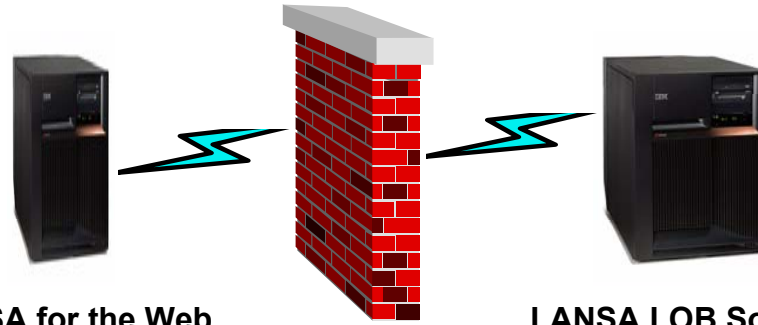
**eServer
iSeries**

Partition 1	Integrated xSeries Card*	Partition 2
Firewall	LANSA On Demand Solution	Any ERP Solution
LINUX	MS Windows	OS/400

*This could also be an xSeries Server attached via the Integrated xSeries Adapter

LANSA and Linux on iSeries

80% of our solutions have been deployed this way

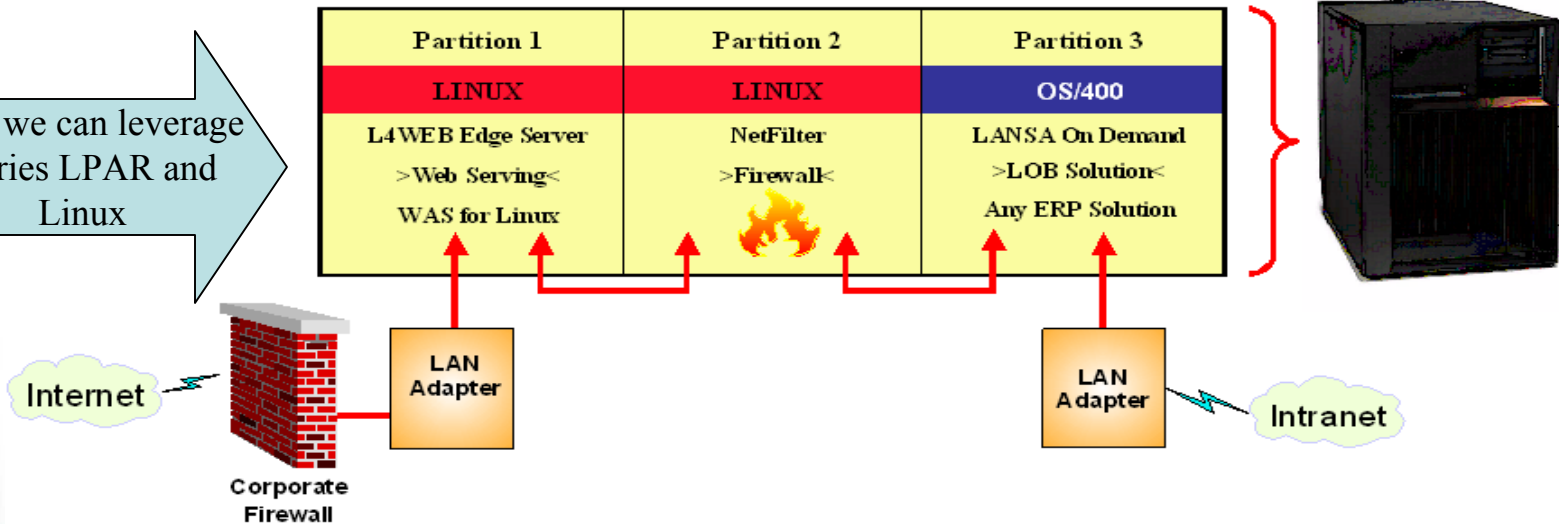


LANSA for the Web
Edge Server

LANSA LOB Solution
Legacy ERP



Now we can leverage iSeries LPAR and Linux



WebSphere and LANSA

LANSA for the Web

- What is it?
 - Serves LANSA apps to Browser and Wireless Interfaces
 - New Linux based Edge Server support
- WebSphere Support: Runs with WAS Express
- SOD: Support WebSphere Portal Express

Visual LANSA

- What is it?
 - Complete IDE that deploys to 5 DB's and 6 Operating Systems (including PowerPC and Intel Linux versions)
- WebSphere Support: SOD Native EJB deployment

LANSA Integrator

- What is it?
 - Complete A2A and B2B Tool, callable from RPG
 - Connects any data anywhere using any protocol
- WebSphere Support: Full Linux Support
- Fully integrated with WebSphere Studio Workbench
 - Leverages WebSphere MQ

To quote Lou Gerstner, “We eat our own cooking”



Learn More about LANSA

Date	Time	Location	Topic	Sponsor
Sept 25	9:00 am – 11:45 am EST	Sheraton Pittsburgh North, Mars PA	UCCnet Integration	IBM
Sept 25	1 pm – 2:30 pm EST	Webinar	LANSA and WebSphere	LANSA
Oct 1	1 pm – 2:30 pm EST	Webinar	Repository and RDML	LANSA
Oct 2	1 pm – 1:45 pm CST	Webinar	UCCnet Integration	LANSA
Oct 2	1:45 pm – 2:00 pm CST	Webinar	AS2 EDI-INT	LANSA
Oct 7	1 pm – 1:45 pm CST	Webinar	UCCnet Integration	LANSA
Oct 7	1:45 pm – 2:00 pm CST	Webinar	AS2 EDI-INT	LANSA
Oct 9	1 pm – 2:30 pm EST	Webinar	Revitalizing your LANSA Legacy Applications	LANSA

<http://www.lansa.com/events/solutionseries.htm>

LANSA

Summary

● Tactical Industry Solutions

- On Demand turn key solutions for Industry Driven Initiatives:
 - UCCNet and AS2 EDI-INT (CPG, Retail)
 - HIPAA (Health)
 - Covisint (Automotive)
- And more including LANSA Business Partner solutions...
- Certified for WebSphere Application Server Express

● Strategic B2B Middleware

- LANSA Integrator:
 - 100% Java services that integrate with any business using any protocol (SOAP-Web Services, AS2, WebSphere MQ Series, XML Parsing, XSL Transformation, FTP, HTTP, HTTPS, SMTP, and POP3) .
 - EDI-INT AS2 Certified (the Drummond group 2/28/03)
- Integrated with WebSphere Studio Workbench (a.k.a Eclipse)

● Rapid Cross Server Development and Application Migration

- Visual LANSA & LANSA for the Web: Develop native applications for 6 Operating Systems (OS/400, Windows, Linux, AIX, HP-UX, Solaris)
- Deploy to any user interface (5250, Browser, Windows, Portal and Wireless)
- Leverage in house skills to develop for multiple platforms, protocols and user interfaces without having to learn them all



IBM Systems Group



^ Solution Connection Server Proven, ToolsNetwork



September 25, 2003



Agenda

- eServer Solution Connection
- Server Proven
- Tools Network
- Contacts

What is Solution Connection?



- A Guide to Solutions
 - ▶ Website of ISV (and SWG) applications that run on IBM eServer hardware

- Integrates
 - ▶ ISV and SWG products to server clothing and differentiation
 - ▶ IBM and solution developer software solutions with valuable, timely and relevant ^ deliverables
 - ▶ ServerProven and Tools Network products with timely offers
 - ▶ With PartnerWorld, Global Solutions Directory, and Business Partner Connections

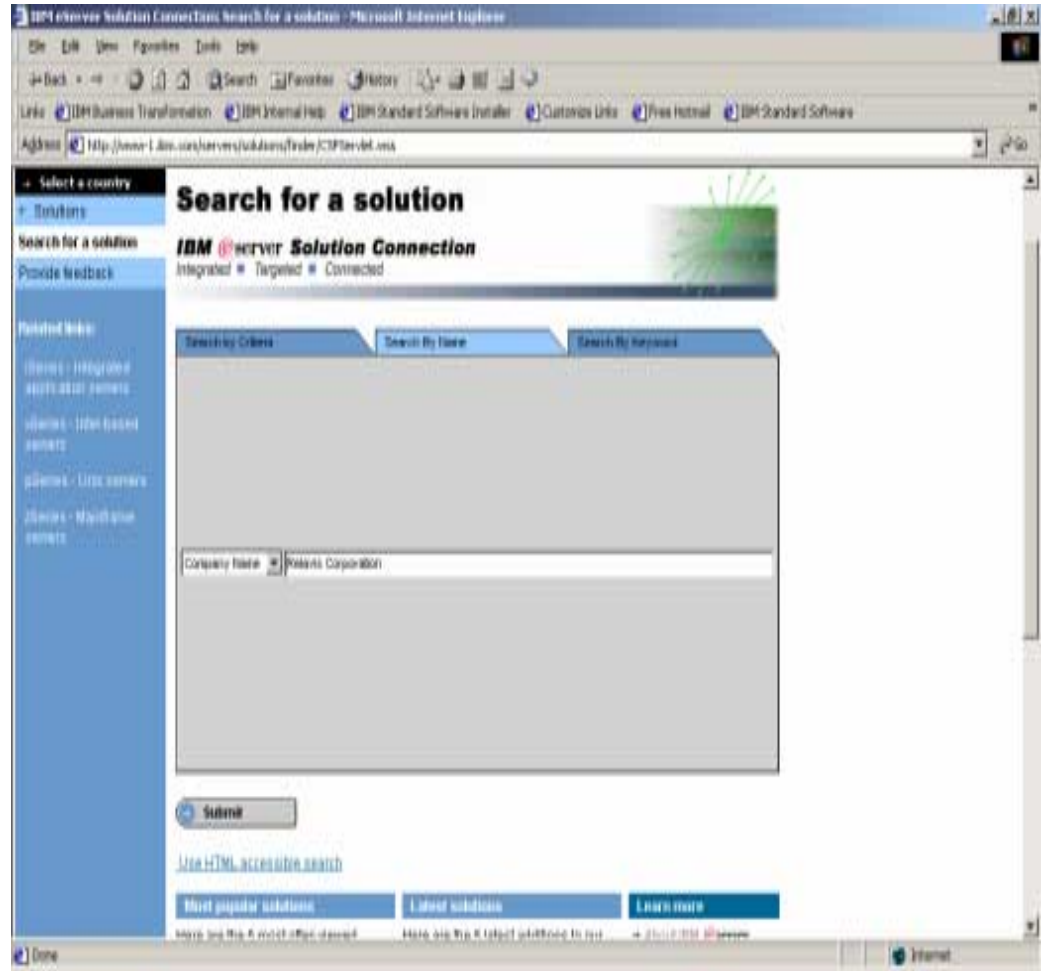
- Used by
 - ▶ Customers
 - ▶ Partners
 - ▶ IBM Sales Teams

eSC Home Page

Find enrolled eSC Solutions via:

<http://www.ibm.com/servers/solutions/finder>

- **Search for solutions by:**
 - Solution Area
 - Technology
 - Geography
 - ServerProven
 - Company or Solution Name
 - Keywords
 - Industry (as of October)
- **IBM and ISV solutions that run on IBM**
^
- **Techniques employed throughout the system to keep information accurate**



On-line Solution Search Results

Sales Linkages

1. Access to ISV and Sales Contacts

Free Customer Opportunities

2. Receive a Comprehensive Report
3. A no fee business assessment
4. Request a series quote

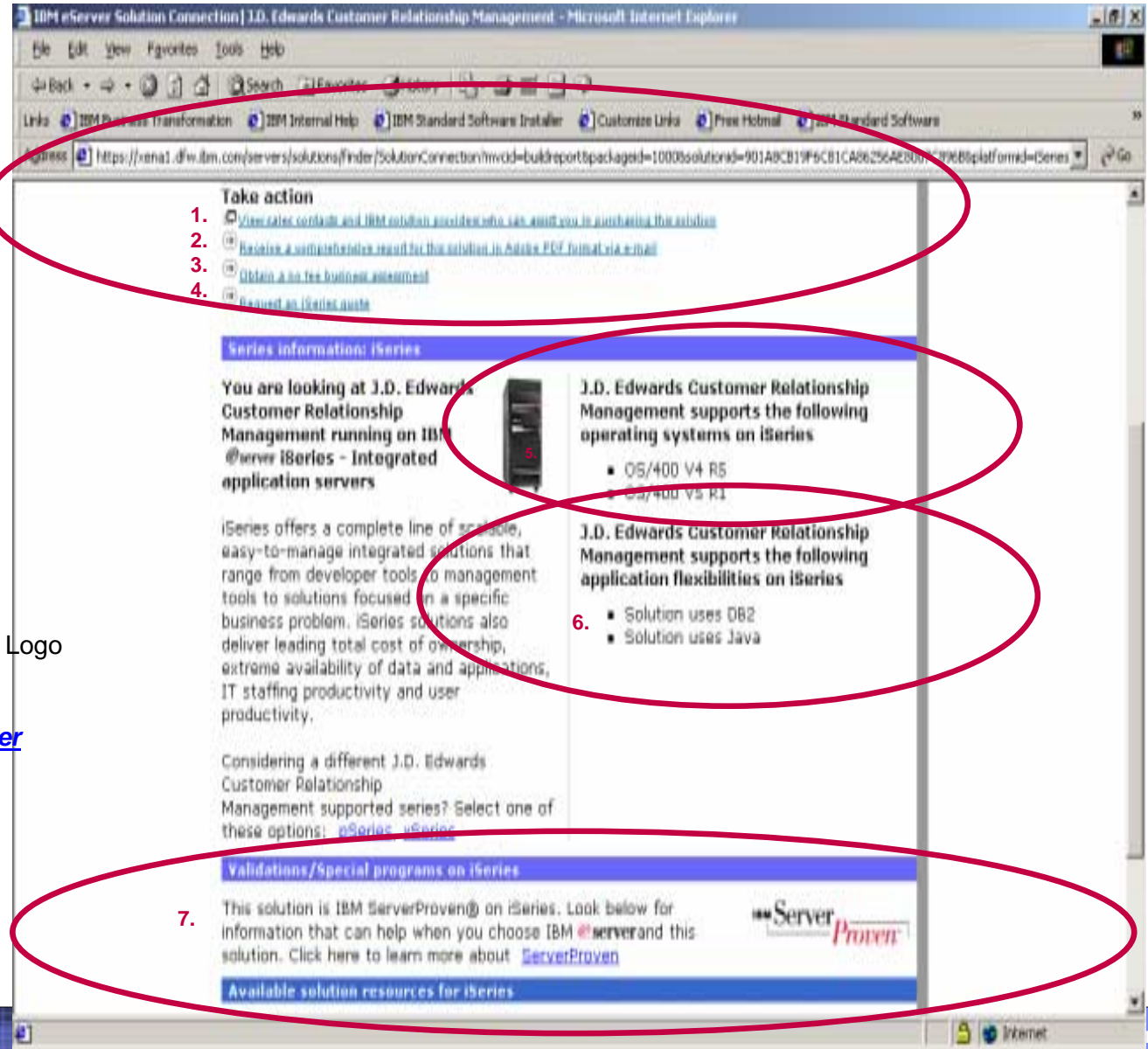
Info captured during eSC enrollment

5. O/S information
6. Application Flexibility information

Special selling offers

7. Validated ServerProven ISV and SP Logo

www.ibm.com/servers/solutions/finder



Benefits of eSC, ServerProven and ToolsNetwork

■ To Customers

- ▶ Access valuable IBM resources through easy-to-find solutions aligned with tailored IBM eServer resources
- ▶ Find software solutions to help solve specific business needs
- ▶ Find qualified solution providers that can help ease implementation
- ▶ Request solution value reports that assist in evaluating solutions and making a more informed solution decision
- ▶ Access to Server Proven offers and TN companion offers
- ▶ Find Server Proven solutions that have been successfully installed and utilized by customers in real-world environments on IBM ^

Providing Customers with Resources....

Allows customers to access different "types" of resources based on:

- **Category**

- Sales Brochures, Sizing guides, Education Classes, Articles, Implementation guides, etc.

- **eServer Series**

- Information about IBM servers that can help enable SW application (e.g. Performance Data, Reports, Quotes)

- **Language:**

- Resources can be created once for multiple languages.

- **Geography / Country**

- NA, EMEA, and AP

* Resources kept current through an automated expiration process

Available solution resources for iSeries

[↓ Benchmarks and Performance \(2\)](#)
 [↓ Education \(8\)](#)
 [↓ Resources to help evaluate this solution \(20\)](#)
[↓ Contacts and Sales Resources \(10\)](#)
 [↓ Offers \(6\)](#)
[↓ Customer Success \(4\)](#)
 [↓ Press and Events \(6\)](#)
 [↓ Services \(6\)](#)
 [↓ Sizing and Planning \(10\)](#)

IBMer - Resources for IBMer use only

Solution - Resources which are specific to this solution

SP - ServerProven resources which can enhance your overall solution implementation

Benchmarks and Performance ↑

Benchmark Solution **IBM eServer iSeries and J.D. Edwards-Xe HTML Reach New Heights** [info](#)

Benchmark demonstrates outstanding scalability of iSeries and OneWorld Xe
 → [Visit this site](#)

ServerProven SP **J.D. Edwards and IBM partner to provide customers with a stable and reliable solution**

→ [View this item](#)

Contacts and Sales Resources ↑

Contact Information Solution IBMer **Contacts: IBM America's Sales teams for J.D. Edwards** [info](#)

the comprehensive list of IBM sales resources
 → [Download this document](#) IBM's Americas Sales Teams for JD Edwards.pdf (81K)

Solution IBMer **J.D. Edwards Alliance contact Information** [info](#)

List of key contacts for IBM and J.D. Edwards alliance
 → [Download this document](#) Contact Information.pdf (203K)

Solution IBMer **J.D. Edwards Contact Information** [info](#)

Worldwide locations to serve you locally!
 → [Visit this site](#)

ServerProven

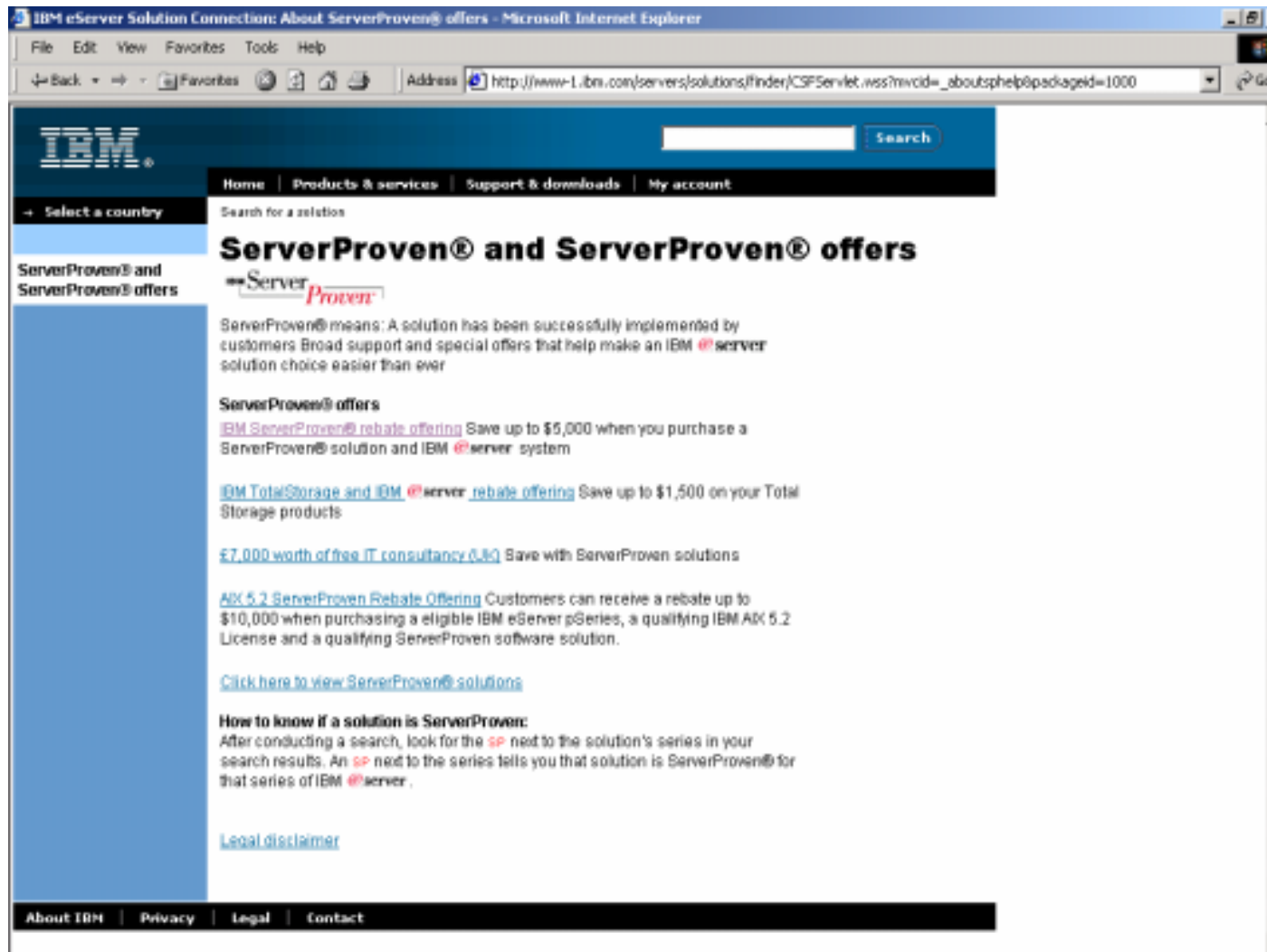


- Logo Program
 - ▶ ServerProven logo program for ISV's to use in their own marketing activities - linking back to eServer Solution Connection

- Proven Solutions
 - ▶ Customer access to mutual success stories (Server Proven Customer Experiences) validated by IBM, highlighting deployment of applications running on IBM eServer platforms

- Targeted Offers
 - ▶ Access to special offers designed to help customers reduce total solution cost, to motivate customer buying decisions and to demonstrate IBM's support for the ISV community when purchasing a Server Proven software solution and an IBM eServer.

ServerProven Offers



IBM eServer Solution Connection: About ServerProven® offers - Microsoft Internet Explorer

File Edit View Favorites Tools Help

Address http://www-1.ibm.com/servers/solutions/finder/CSFServlet.wss?mvid=_aboutsphelp&packageid=1000 Go

IBM Search

Home | Products & services | Support & downloads | My account

Select a country Search for a relation

ServerProven® and ServerProven® offers

ServerProven® means: A solution has been successfully implemented by customers. Broad support and special offers that help make an IBM eServer solution choice easier than ever.

ServerProven® offers

- [IBM ServerProven® rebate offering](#) Save up to \$5,000 when you purchase a ServerProven® solution and IBM eServer system.
- [IBM TotalStorage and IBM eServer rebate offering](#) Save up to \$1,500 on your Total Storage products.
- [\\$7,000 worth of free IT consultancy \(UK\)](#) Save with ServerProven solutions.
- [AIX 5.2 ServerProven Rebate Offering](#) Customers can receive a rebate up to \$10,000 when purchasing a eligible IBM eServer pSeries, a qualifying IBM AIX 5.2 License and a qualifying ServerProven software solution.

[Click here to view ServerProven® solutions](#)

How to know if a solution is ServerProven:

After conducting a search, look for the **SP** next to the solution's series in your search results. An **SP** next to the series tells you that solution is ServerProven® for that series of IBM eServer.

[Legal disclaimer](#)

About IBM | Privacy | Legal | Contact

Tools Network

- Tools Network is a recognized set of application development and systems management tools that are in use today on IBM eServers.
- All tools in Tools Network are Server Proven
- These tools are easy to find by searching for them in eSC
- Tools ISV's can offer special TN Companion Offers to their customers, increasing their sales!
- Currently, 217 ISVs are members of Tools Network: 194 iSeries; 46 pSeries; 47 xSeries, and 28 zSeries.

Contacts

Contact Information

- Denise Chapman
eSC Member Services
chapman@us.ibm.com
- Jonathan Caplan
ServerProven Program Manager
jcaplan@us.ibm.com
- General Program Questions
proven@us.ibm.com
- eSC Home Page
<http://www.ibm.com/servers/solutions/finder>



IBM eServerJ iSeriesJ

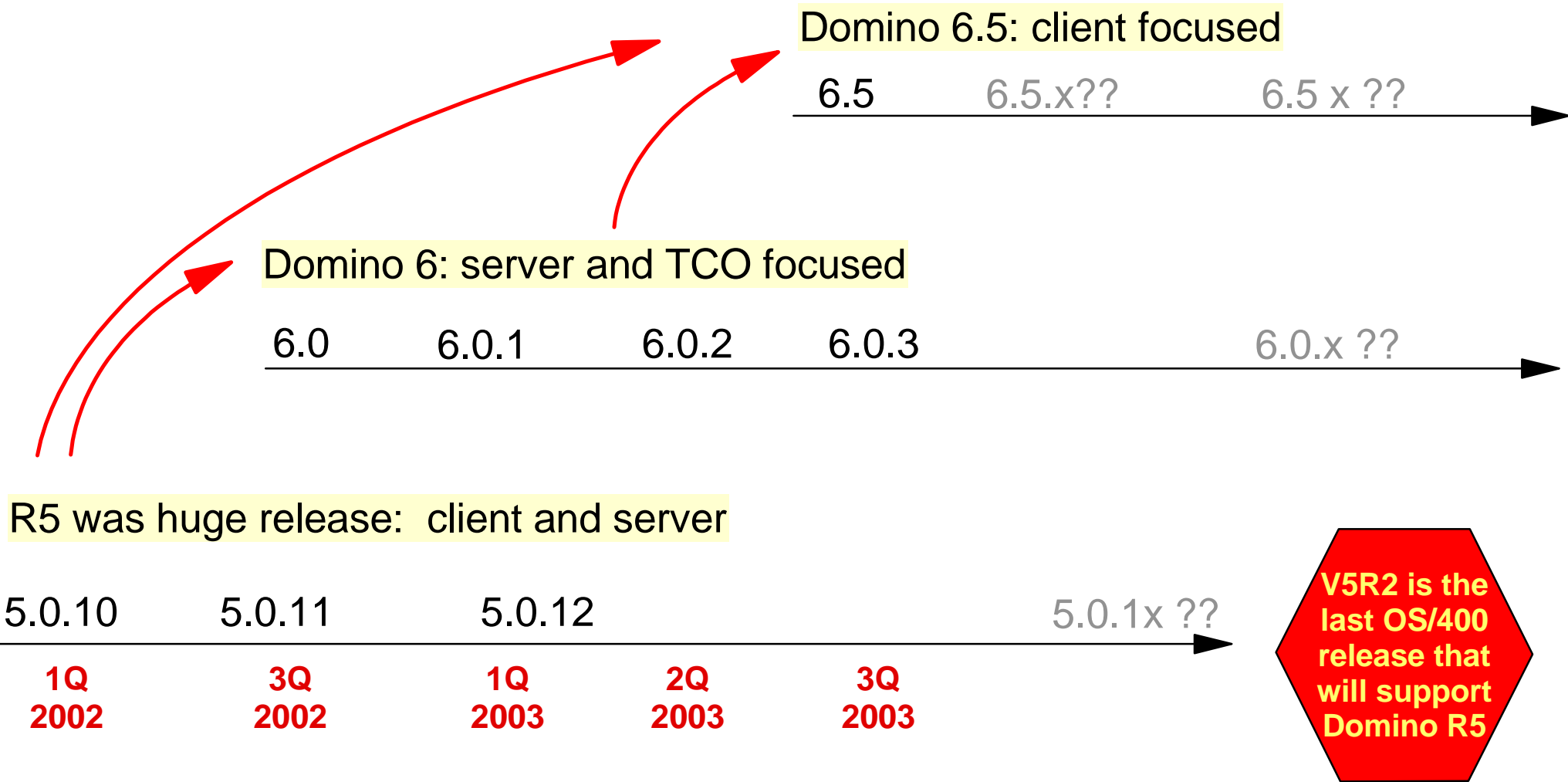
Domino News - September 2003

Jelan Heidelberg, ISG Business Development Manager
for Lotus

jcheidel@us.ibm.com 1-612-397-2593

© Copyright IBM Corporation, 2003. All Rights Reserved.
This publication may refer to products that are not currently
available in your country. IBM makes no commitment to
make available any products referred to herein.

Multiple Options for Lotus Customers Today



All this cool stuff... plus the potential to reduce TCO!!!

- ◆ The productivity enhancements in Domino 6 really do add up

Area of Potential Savings *	Est. savings per month (USD) **
Lower network bandwidth costs	\$8.00
Less administration with server consolidation	\$1.00
Lower end user support costs	\$.90
Reduced future upgrade costs	\$.70
Less downtime with preventive failure monitoring	\$.25
Increased user productivity with UI enhancements	\$2.00
Increased availability by improved fault recovery	\$.50
Total savings per user per month*	\$13.35

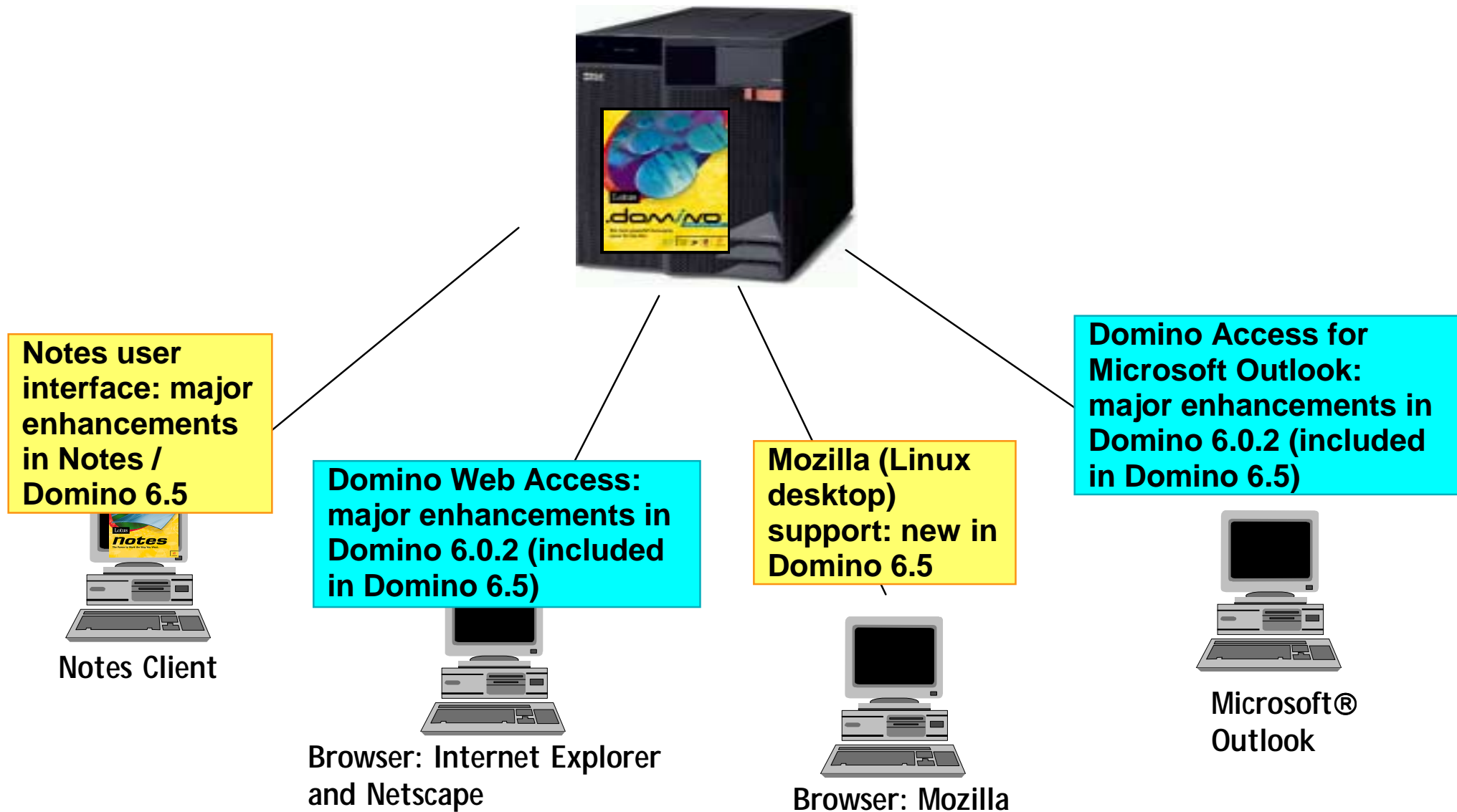
- ◆ The larger the enterprise, the larger the potential savings

Number of Users	Potential Annual Savings (USD)
500	\$80,100
1,000	\$160,200
2,000	\$320,400
5,000	\$801,000
10,000	\$1,602,000
15,000	\$2,403,000
20,000	\$3,204,000

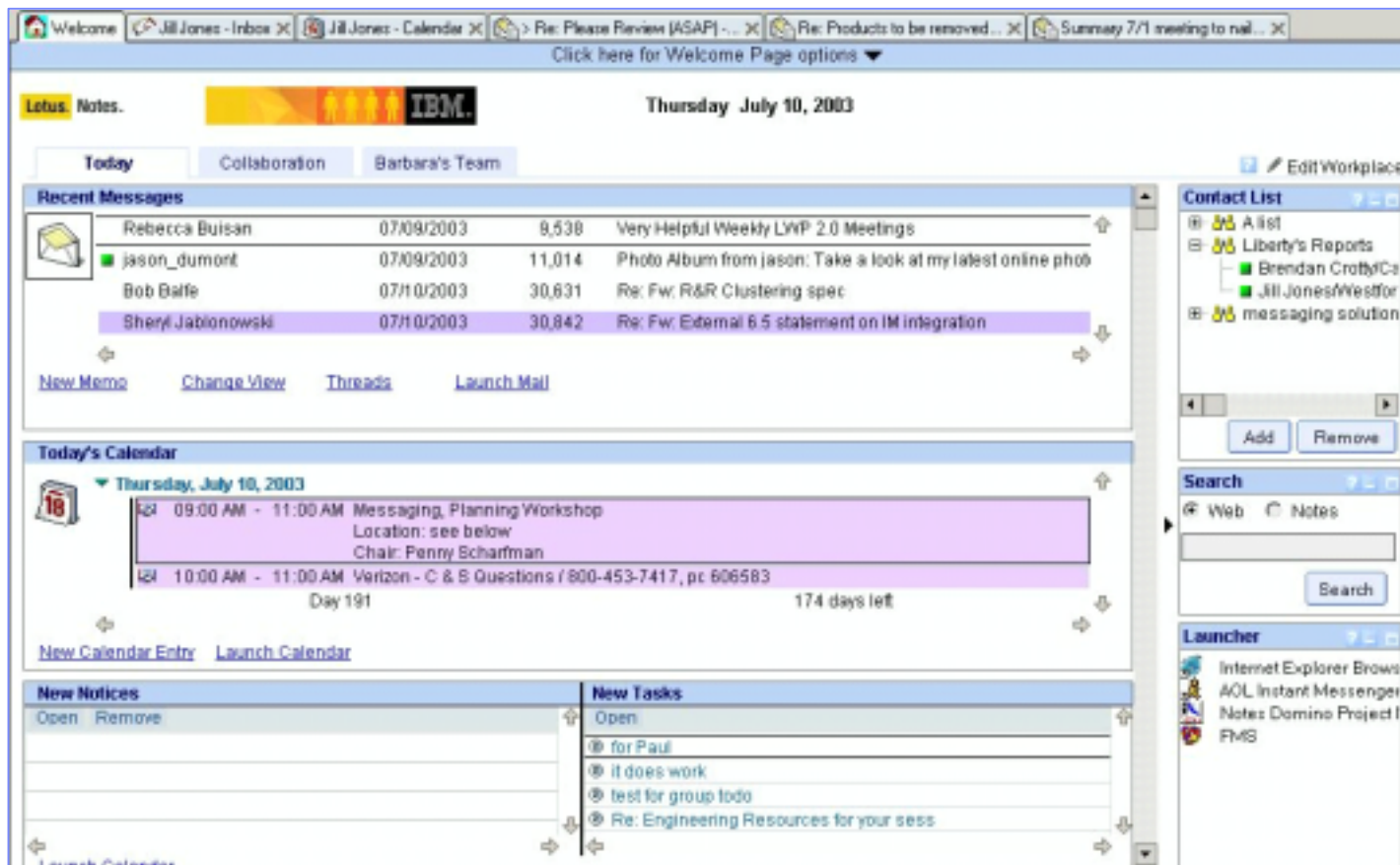
* Source: Ferris Research "The Cost Savings of Upgrading to Notes/Domino 6" Oct 2002 www.ferris.com (password required)

** Note: estimated savings shown here represent middle ground within range of savings described in the report.

Support for multiple clients: flexibility

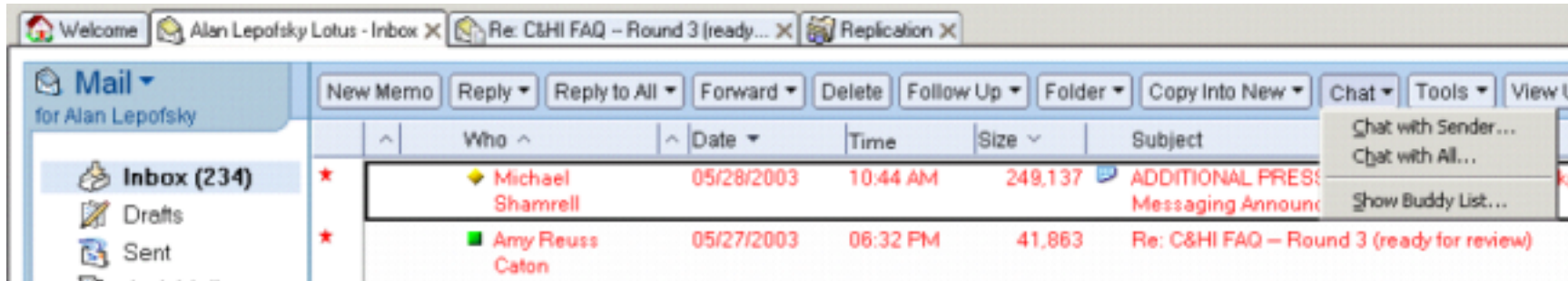


Notes 6.5 Builds on the Success with an Enhanced Interface

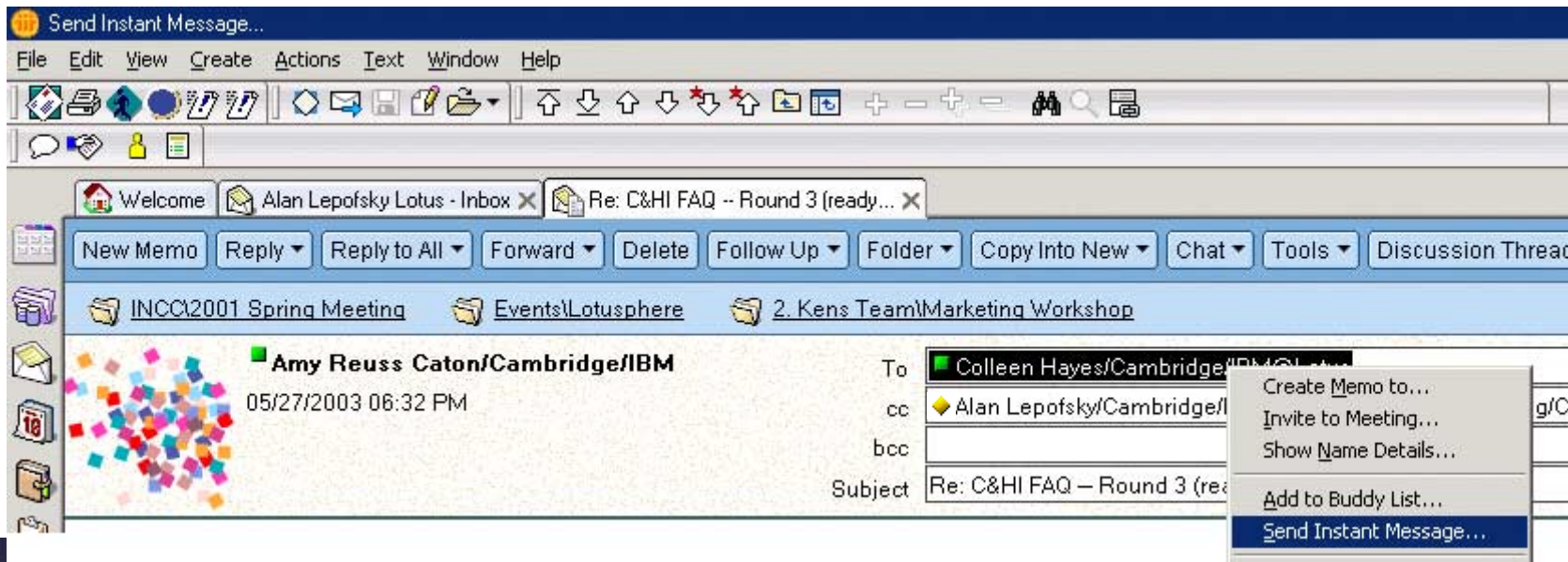


IBM Instant Messaging Integration

Awareness integration at the view / folder level

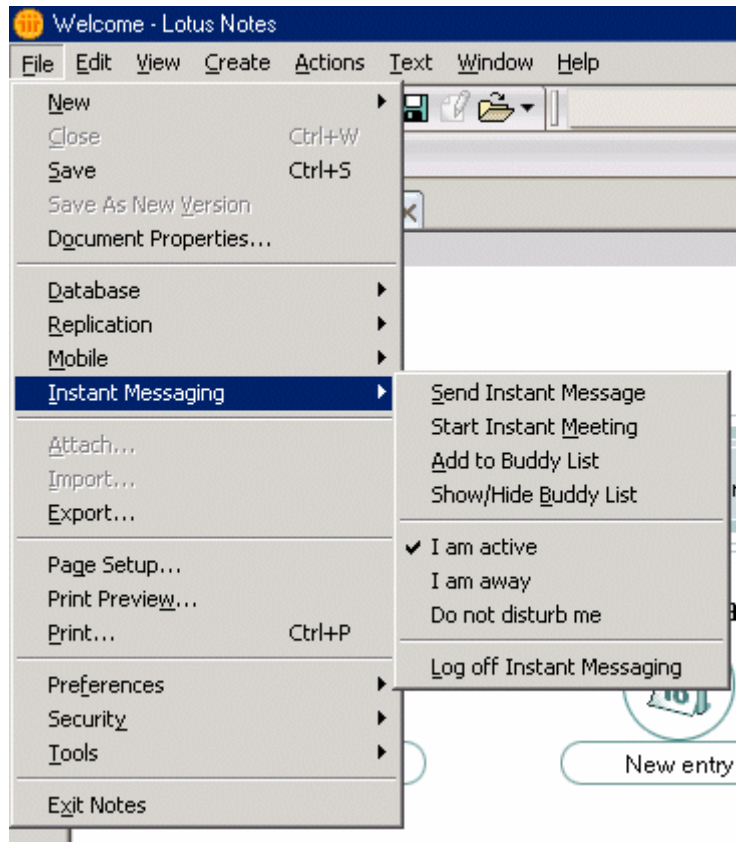


Awareness integration at the form level



IBM Instant Messaging Integration

Instant messaging menus



Instant messaging toolbar



- ◆ Send instant message
- ◆ Start instant meeting
- ◆ Add to buddy list
- ◆ Show or hide buddy list

- ◆ Requires Sametime license
- ◆ Remember, Enterprise Edition includes 100 licenses

Domino 6.5: iSeries Enhancements

Multi-versioning support

- ◆ Single LPAR
- ◆ Supports Domino 6.5 and Domino 6.0.3
- ◆ From these version FORWARD
- ◆ Not retroactive to earlier Domino releases

Access to non-DB2 relational databases

- ◆ Customers have asked for this
- ◆ Oracle, Sybase, etc.
- ◆ Uses normal integration options:
 - ▶ @db commands; LEI; LotusScript
- ◆ Doesn't require JDBC coding

ibm.com/eserver/series/domino

Legal Information

© Copyright International Business Machines Corporation 2002

References in this document to IBM products or services do not imply that IBM intends to make them available in every country.

The following terms are trademarks or registered trademarks of the IBM Corporation in the United States or other countries or both:

AIX	e-business logo	iSeries	xSeries
AS/400	IBM	OS/400	zOS
e(logo)server	IBM Logo	WebSphere	zSeries

cc:Mail, Domino, iNotes, Lotus, Lotus Notes, Lotus Domino, Move2Lotus, Notes, QuickPlace, and Sametime are trademarks or registered trademarks of Lotus Development Corporation and/or IBM.

Microsoft, Windows, NT, and the Windows logos are trademarks or registered trademarks of Microsoft Corporation.

UNIX is a registered trademark in the United States and other countries licensed exclusively through X/Open Company Limited.

Java and all Java-related trademarks or logos are trademarks or registered trademarks of Sun Microsystems, Inc in the United States and other countries.

IBM's VisualAge products and services are not associated with or sponsored by Visual Edge Software, Ltd.

Pentium is a trademark of Intel Corporation.

Tivoli is a registered trademark of Tivoli Systems, Inc.

Linux is a registered trademark of Linus Torvalds.

Other company, product, and service names may be trademarks of their respected providers.

Photographs shown are of engineering prototypes. Changes may be incorporated in production models.

All customer examples described are presented as illustrations of how those customers have used IBM products and the results they may have achieved. Actual environmental costs and performance characteristics may vary by customer.

Information in this presentation concerning non-IBM products was obtained from a supplier of these products, published announcement material, or other publicly available sources. Sources for non-IBM list prices and performance numbers are taken from publicly available information. Including vendor announcements, vendor worldwide homepages. IBM has not tested these products and cannot confirm the accuracy of performance, capability, or any other claims related to non-IBM products. Questions on the capability of non-IBM products should be addressed to the supplier of those products.

All statements regarding IBM future direction and intent are subject to change or withdraw without notice, and represent goals and objectives only. Contact your local IBM office or IBM authorized reseller for the full text of the specific Statement of Direction.

To order LPs use the same LP ID that was used for the AS/400.