



IBM eServer™ iSeries™

The next generation iSeries...
...simplicity in an on demand world

2003 iSeries May Announcement

Extending iSeries simplicity in an on demand world

- **Enhancing iSeries SMB options**
 - New entry i810 delivers flexible growth
 - Cost effective upgrades into i810 added from popular 720 & 820s

- **Growing iSeries on demand leadership**
 - On/Off Capacity on Demand Prepaid Feature

- **Exploiting new high performance storage options**
 - New tape, ESS performance improvements and broader SAN flexibility

- **Increasing new workload solution flexibility**
 - Extending IBM's Linux middleware base with DB2 UDB
 - Windows System 2003 support for IXS/IXA and iSeries Access
 - Migration & performance enhancements for DB2 UDB for iSeries

New Entry i810



- Delivers a lower entry price point to the power and flexibility of the i810
- I/O capabilities equal to other i810 processors

i810	Standard	Enterprise
2,700 CPW	P20	P20
1,450 CPW	P10	P10
1,020 CPW	P10	P10
750 CPW	P10	P10



Announce May 13
 Available May 23

New Upgrade Paths Increase Flexibility



- Expanding upgrade options for Model 720 & i820 customers with new entry i810
- Simpler, direct upgrades to i825 from Models 720, 730, and i820

“The capacity of Coleman Cable’s AS/400 was good, but it just wouldn’t do the partitioning to the extent that the new iSeries servers are designed to deliver. That meant the company couldn’t take advantage of the improved uptime reliability and performance of IBM’s latest product offerings.”

Announce May 13
Available May 23

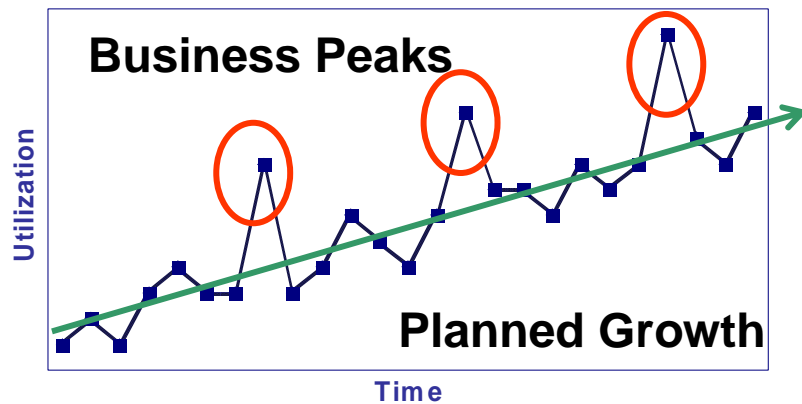
Jane Morgan, President 411 Computers

Upgrade Paths

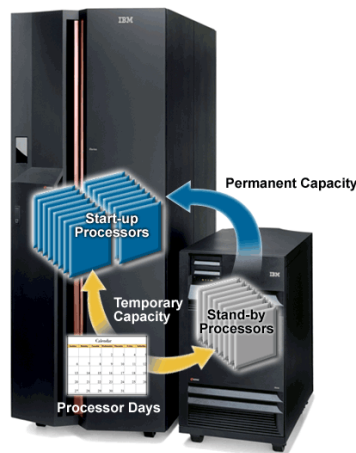
Model		810	810	810	810	825	870
	Proc	2465	2466	2467	2469	2473	2486
720 *	2061	x	x	x		x	
	2062	x	x	x	x	x	
	2063		x	x	x	x	
	2064				x	x	
730 *	2065		x	x	x	x	
	2066			x	x	x	
	2067				x	x	x
	2068					x	x
820	2395	x	x	x	x	x	
	2396			x	x	x	
	2397				x	x	x
	2398					x	x
	2435	x	x	x	x	x	
	2436			x	x	x	
	2437				x	x	x
	2438					x	x

* 720, 730, 740 upgrades orderable through October 7, 2003

Capacity on Demand



- Adjust to unpredictable demand without interrupting operations or applications
- Affordable processor activation price simplifies upgrade procurement
- **Capacity Upgrade on Demand**
 - Planned growth
 - Pay when purchased
- **On / Off Capacity on Demand**
 - Business peaks
 - Pay before or after activation



On/Off Capacity on Demand Prepaid Feature

Announce May 13
Available May 23

- 30 day prepay option increases budgeting flexibility
- 25% lower price per processor day

Exploiting Capacity on Demand

- Business Problem
 - Flexible capacity required to handle retail holiday shopping peaks
- Solution
 - In 15 minutes, dynamically added two reserve processors to i830
- Benefit
 - Customer website response time cut from up to 15 seconds to sub-second



**TOWER
HOBBIES**



“Capacity upgrade on demand allowed our iSeries 830 webserver to handle the excessive glut of internet transactions during the holidays.”

Tim Smith, Hobbico Director of Retail IS

New High Performance Storage Options

- New high performance IBM Ultrium LTO 2 offerings
 - Up to 2 times improvements on cartridge capacity and data transfer rates
 - 3582 & 3583 provide flexible tape libraries for mid-size & large enterprises
- New VXA-2 provides low cost, high capacity integrated entry tape solution
 - An alternative to QIC tape solutions; Ideal for SMB customers
 - Up to 80 GB capacity, up to 160 GB with compression
- Improved IBM Enterprise Storage Server (ESS) performance
- Enhanced SAN connectivity to McDATA switches and directors
 - Includes 4500 & 3232 Fabric Switches & 6064 & 6140 Fabric Directors

VXA-2



3582



4500



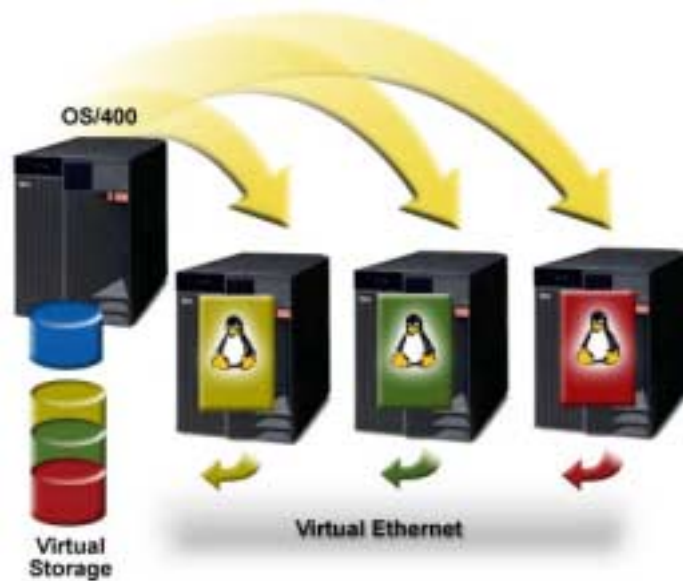
6140



Available June 13

OS/400 Support May 23

Growing Open Middleware on Linux



"I have every confidence in this platform. It's simplicity, reliability and running costs beat an NT server hands down!" I've got all the advantages of both the iSeries and Linux...."

Benoit Roux
IT Manager – Bandai France

- Consolidate with up to 10 Linux instances per processor
- iSeries provides flexible server management with dynamic virtual storage
- DB2 UDB V8 for Linux – planned eGA May 23, 2003
- WAS for Linux – planned for 3Q2003*

New!

New!

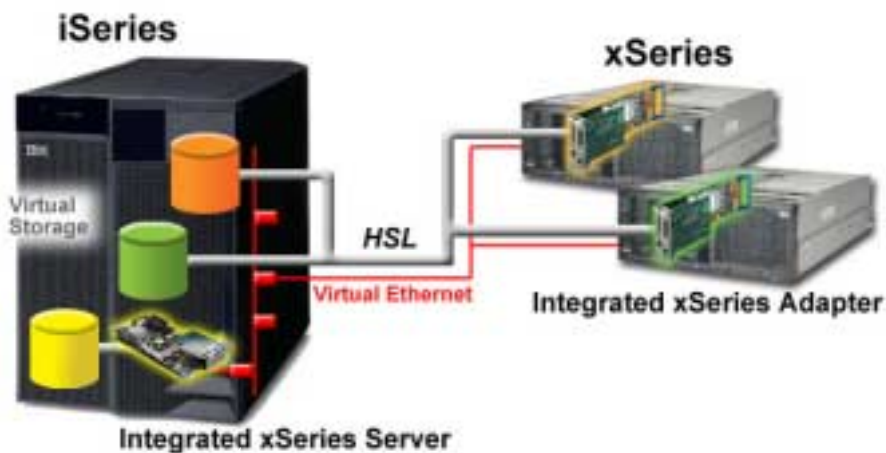
* IBM plans and directions are subject to change without notice.

Supporting Windows Server 2003 Integration

"One of the things I enjoy most about the IBM iSeries and xSeries integration is that I have been able to take a painstaking process of building a brand new Wintel server from scratch and getting it deployed from approximately a 3-4 day procedure down to 20 minutes."

Brendan Carlton

Systems Administrator, Huhtamaki



New!

- Support for Microsoft Windows Server 2003 on IXS and IXA*

New!

- Support for Windows 2003 with iSeries Access
 - Requires service pack SIO7675
 - See www.ibm.com/eserver/iseries/access/supportedos.htm for details

* Product Preview: This presentation contains IBM plans and directions. Such plans are subject to change without notice. Planned availability is one month after Microsoft Windows Server 2003 general availability.

DB2[®] UDB for iSeries

- Reduce DBA costs with extensive automation and integration of database
- Simplify the transition from Oracle with no-charge DB2 UDB Migration Toolkit for Oracle



Available Now

- Automates database schema replication; converts data, stored procedures, SQL calls etc

- Enhanced self-optimizing query environment improves SQL performance

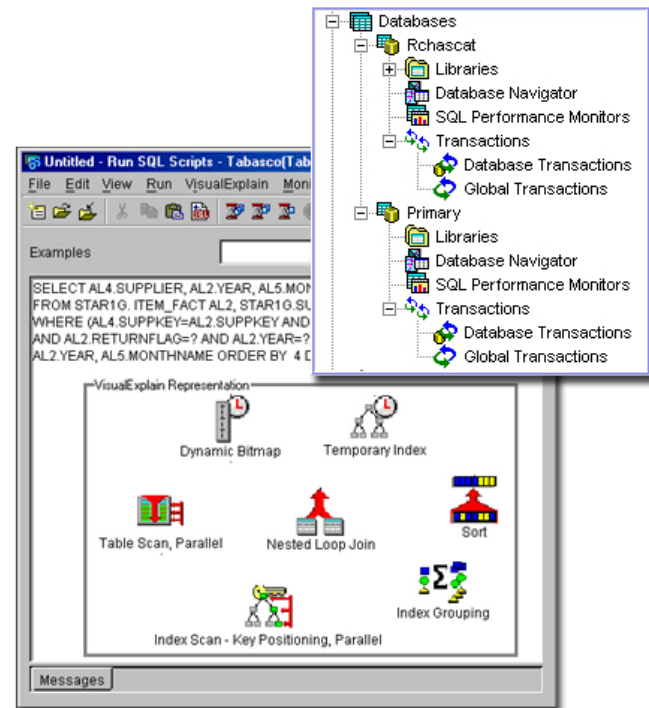
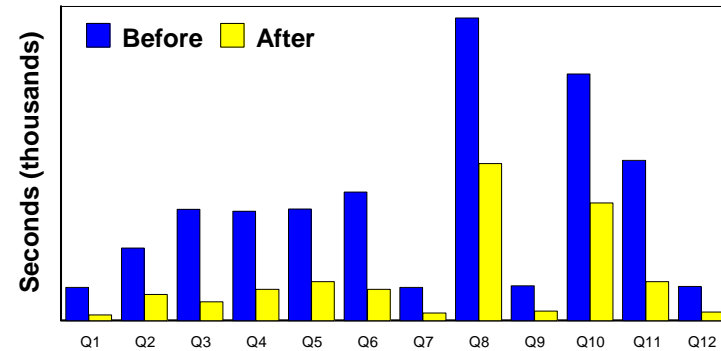


Available May 23

- May provide 2-5 times improvement for read only, complex queries such as Business Intelligence & CRM analytics

Requires V5R2 & latest DB2 PTFs

Complex Queries



The next generation iSeries...



...simplicity in an on demand world

Trademarks and Disclaimers

© IBM Corporation 1994-2003. All rights reserved.

References in this document to IBM products or services do not imply that IBM intends to make them available in every country. The following terms and trademarks or registered trademarks of International Business Machines Corporation in the United States, other countries, or both. This list is not a comprehensive list of all IBM trademarks.

400	ClusterProven	e business(logo)	IBM.COM	PowerPC	System/38
AIX	DataPropogator	e(logo) business	InfoPrint	PR/SM	ThinkPad
AIX/L (logo)	DB2	e-business (logo)	iSeries	pSeries	Tivoli
AIX 5L	DB2 Extenders	e-business Hosting	Magstar	Redbooks	VisualAge
Application System/400	DB2 OLAP Server	e-business on demand	MQSeries	SecureWay	WebSphere
AS/400	DB2 Universal Database	FlashCopy	Operating System/400	SmoothStart	X-Architecture
AS/400e	DRDA	IBM	OS/400	SQL/400	xSeries
Chipkill	e(logo)server	IBM (logo)	Parallel Sysplex	System/36	zSeries

Cc:Mail, Domino.Doc, Domino, Freelance Graphics, iNotes, LearningSpace, Lotus Notes, Lotus, Notes, QuickPlace, Sametime are trademarks owned by IBM-Lotus in the United States, other countries, or both.

C-bus is a trademark of Corollary, Inc. in the United States, other countries or both.

Java and all Java-based trademarks are trademarks of Sun Microsystems, Inc. in the United States, other countries, or both.

Microsoft, Windows, Windows NT, and the Windows logo are trademarks of Microsoft Corporation in the United States, other countries, or both.

ActionMedia, LANDesk, MMX, Pentium and ProShare are trademarks of Intel Corporation in the United States, other countries, or both.

UNIX is a registered trademark of The Open Group in the United States and other countries.

SET and the SET Logo are trademarks owned by SET Secure Electronic Transaction LLC.

Other company, product and service names may be trademarks or service marks of others.

Information is provided "AS IS" without warranty of any kind.

All customer examples described are presented as illustrations of how those customers have used IBM products and the results they may have achieved. Actual environmental costs and performance characteristics may vary by customer.

Information in this presentation concerning non-IBM products was obtained from a supplier of these products, published announcement material, or other publicly available sources and does not constitute an endorsement of such products by IBM. Sources for non-IBM list prices and performance numbers are taken from publicly available information, including vendor announcements and vendor worldwide homepages. IBM has not tested these products and cannot confirm the accuracy of performance, capability, or any other claims related to non-IBM products. Questions on the capability of non-IBM products should be addressed to the supplier of those products.

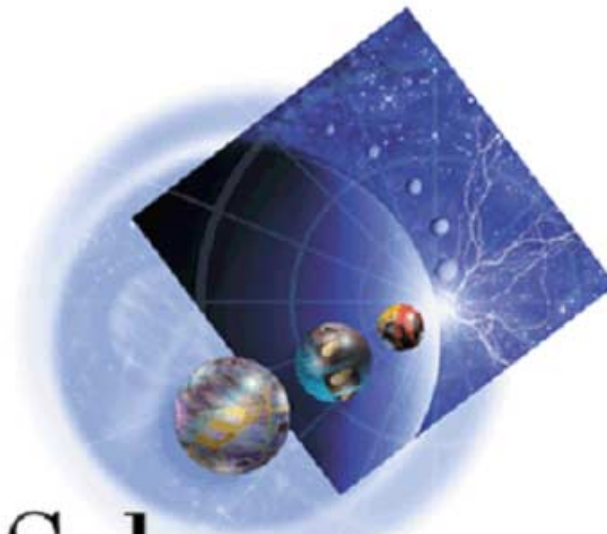
All statements regarding IBM future direction and intent are subject to change or withdrawal without notice, and represent goals and objectives only. Contact your local IBM office or IBM authorized reseller for the full text of the specific Statement of Direction.

Some information in this presentation addresses anticipated future capabilities. Such information is not intended as a definitive statement of a commitment to specific levels of performance, function or delivery schedules with respect to any future products. Such commitments are only made in IBM product announcements. The information is presented here to communicate IBM's current investment and development activities as a good faith effort to help with our customers' future planning.

Performance is based on measurements and projections using standard IBM benchmarks in a controlled environment. The actual throughput or performance that any user will experience may vary depending upon considerations such as the amount of multiprogramming in the user's job stream, the I/O configuration, the storage configuration, and the workload processed. Therefore, no assurance can be given that an individual user will achieve throughput or performance improvements equivalent to the ratios stated here.

Photographs shown are of engineering prototypes or representation of product functions. Changes may be incorporated in production models.

Education evolves into eLearning



WebSphere[®]
Development Studio
for iSeries[™]

David Slater
iSeries AD Market Manager
slater@ca.ibm.com

iSeries AD Objectives



Support the iSeries goal to become a premier e-business and Java server

Requirements

- More e-business applications required - quickly
- Reduced iSeries ebusiness server costs
- Improved e-business technical support

Deliver AD tools to support the rapid expansion of e-business applications for iSeries

- Web-enable 5250 applications
- Build new e-business applications
- Port existing e-business applications from other servers



iSeries AD Report Card



WebSphere Development Studio for iSeries has delivered the AD tools to support the rapid expansion of e-business applications

- WDS is pervasive on the latest releases of OS/400
 - **Over 80,000 copies/refreshes of WDS shipped since 05/2001**
- WebFacing Tool is the quickest, easiest and most cost effective way to create a Web interface to a 5250 application

The rapid expansion of e-business applications has not materialized

- Most customers and partners lack the skills and abilities to effectively leverage the capabilities of our AD tools
- We are not delivering effective educations and training to iSeries developers
 - **Classroom education expensive**
 - ▶ **Course fees**
 - ▶ **Travel costs**
 - **Travel restrictions make classroom labs and lectures un-attendable**
 - **Many companies cannot afford to have key technical resources on course**

WDS education moves to e-business



IBM in partnership with eLearning-Labs is offering cost effective education courses for WebSphere Development Studio for iSeries

- **Courses (lectures and lab exercises) delivered via a virtual classroom over the Web**
 - Students only need a browser and a good Internet connection
 - Course fees are less than IBM classroom offerings
 - No travel costs
 - No time-out-of-territory for key technical resources
 - Courses delivered by practitioners not teachers/educators
 - Lectures are scheduled but labs are flexible
 - ▶ Lectures are taped in case some students can't attend
- **Mentoring and eConsulting services are also available**
 - WebFacing WorkShops helps customers / partners Web-enable their applications in an on-the-job training environment

eLearning moves to eBusiness

“All the benefits of traditional classroom training without the high costs.”

Rick Felt – President
eLearning-Labs, LLC (eLL)
866-531-3031
www.elearning-labs.com
rick.felt@elearning-labs.com

iSeries Education

- ◆ Self learning training products or simple on-line lectures – insufficient for today's needs
- ◆ TOOT (Time out of territory)
- ◆ Corporate travel policy / costs

eLearning-Labs Edge

iSeries education

IBM-authorized courseware

IBM-certified instructors / field developers

Mentored eLabs

Deployment to WAS on iSeries

Browser access to virtual classroom & eLabs

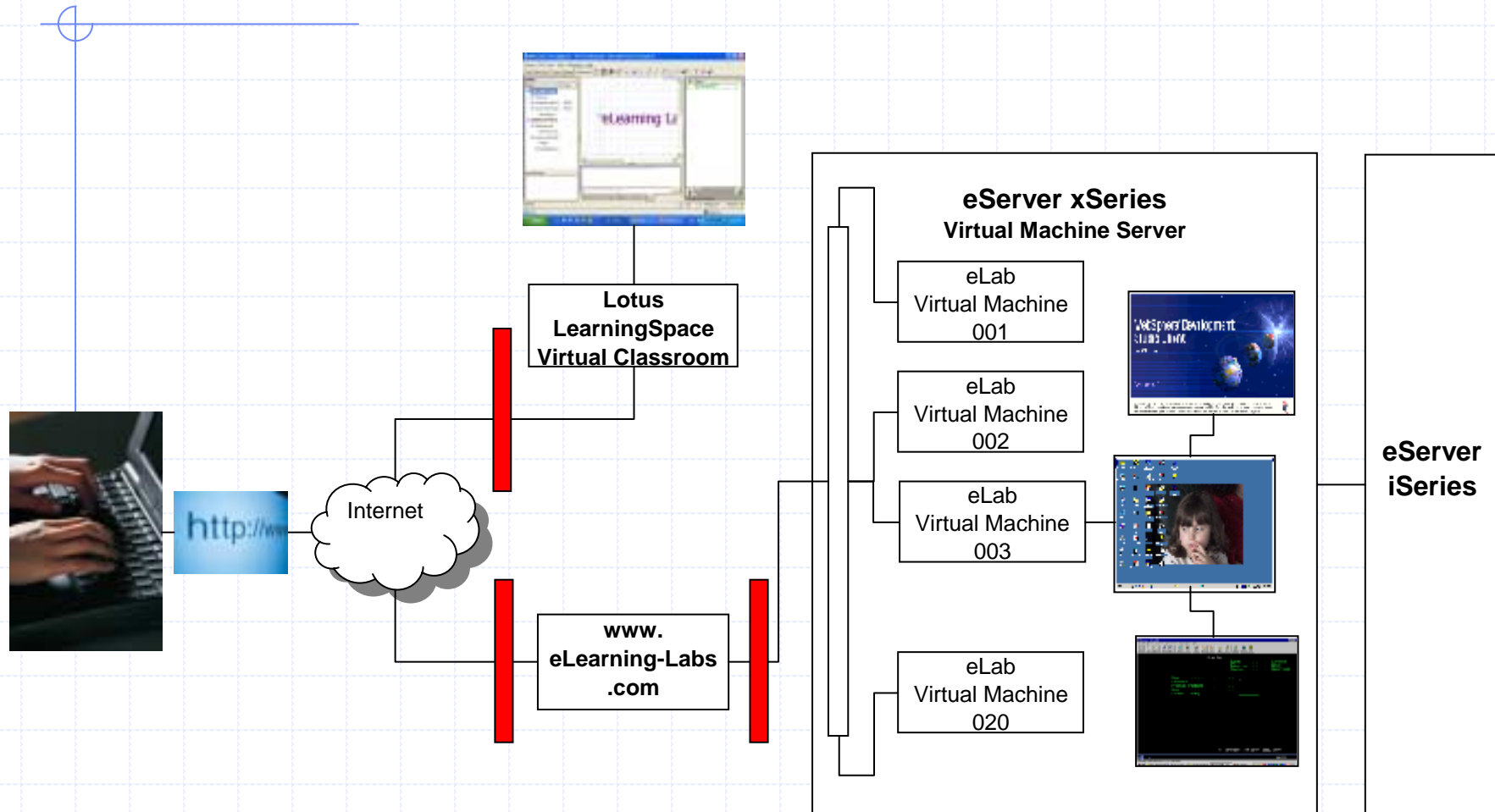
Pre-configured

Recorded lectures

WebFacing Workshop

Live Q&A

eLearning-Labs Environment



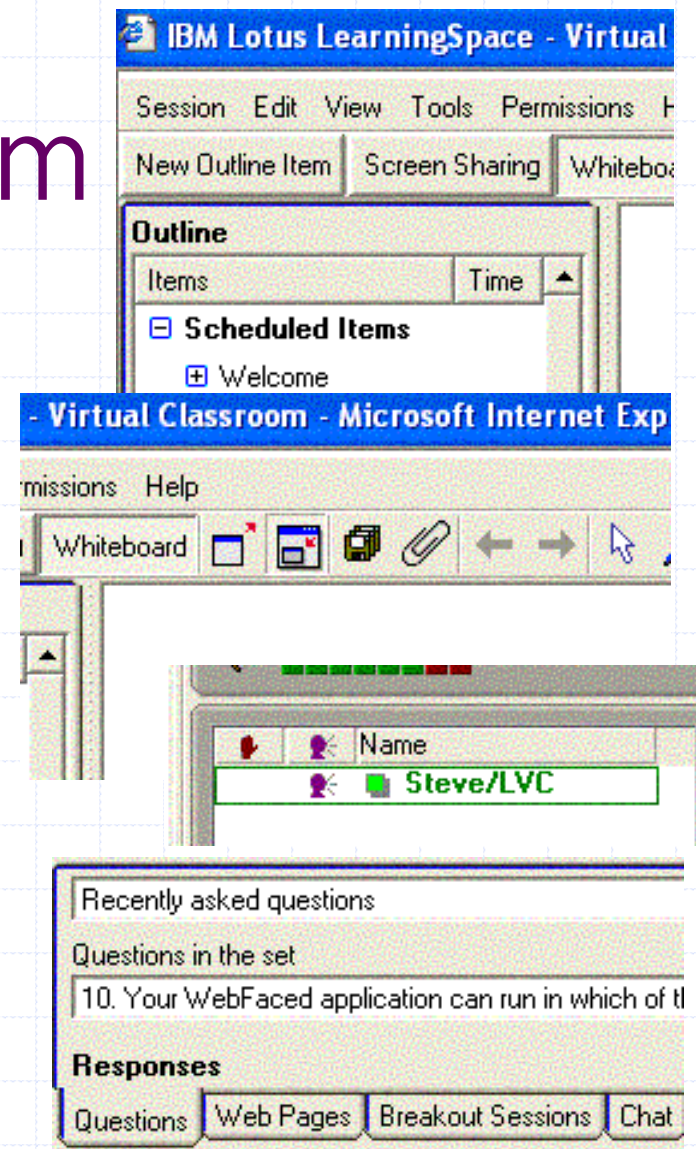
eLearning Classroom

- ◆ eLearning Classroom: provides the environment where instructors and students interact with tools such as:
 - Presentation files
 - Questions & Answers (structured / non-structured)
 - Demonstrations

eLearning classroom

◆ Main features of Lotus Learning Space Virtual Classroom

- Outline panel
- Whiteboard panel
- Participants panel
- Interaction tabs
 - ◆ Questions
 - ◆ Web Pages
 - ◆ Breakout sessions
 - ◆ Chat



Session Edit View Tools Permissions Help

New Outline Item Screen Sharing Whiteboard

Outline

Items	Time
Scheduled Items	
+ Welcome	
+ eLearning Labs O...	28:55
- eLab Tech-Check	05:00
eLab log on	
Additional Materi...	
- Question pool	
Have you ever...	
- Empty presentatio...	
Page 1	
Unscheduled scre...	

eLearning La

Name
Steve/LVC

Speaker Notes

Empty text area for speaker notes.

The text you type appears to all session participants here.

Type your chat message here...

Questions Web Pages Breakout Sessions Chat

You are the instructor.

Ready. 0 1 Participants 00:01:41

Done Internet

eLearning eLabs

- ◆ eLab Server: Where instructors and students have access to fully configured, networked desktops to back-end iSeries servers via a standard Web Browser
- ◆ Launched from Lotus Learning Space Virtual Classroom
- ◆ Login screen
- ◆ Virtual rack containing virtual machine
- ◆ Terminal Server session with the server

Log On to Windows



Microsoft

**Windows 2000
Server**

Built on NT Technology

Microsoft

Copyright © 1985-1999
Microsoft Corporation

User name:

wdsclab01

Password:

|

OK

Cancel

Options >>

Logoff

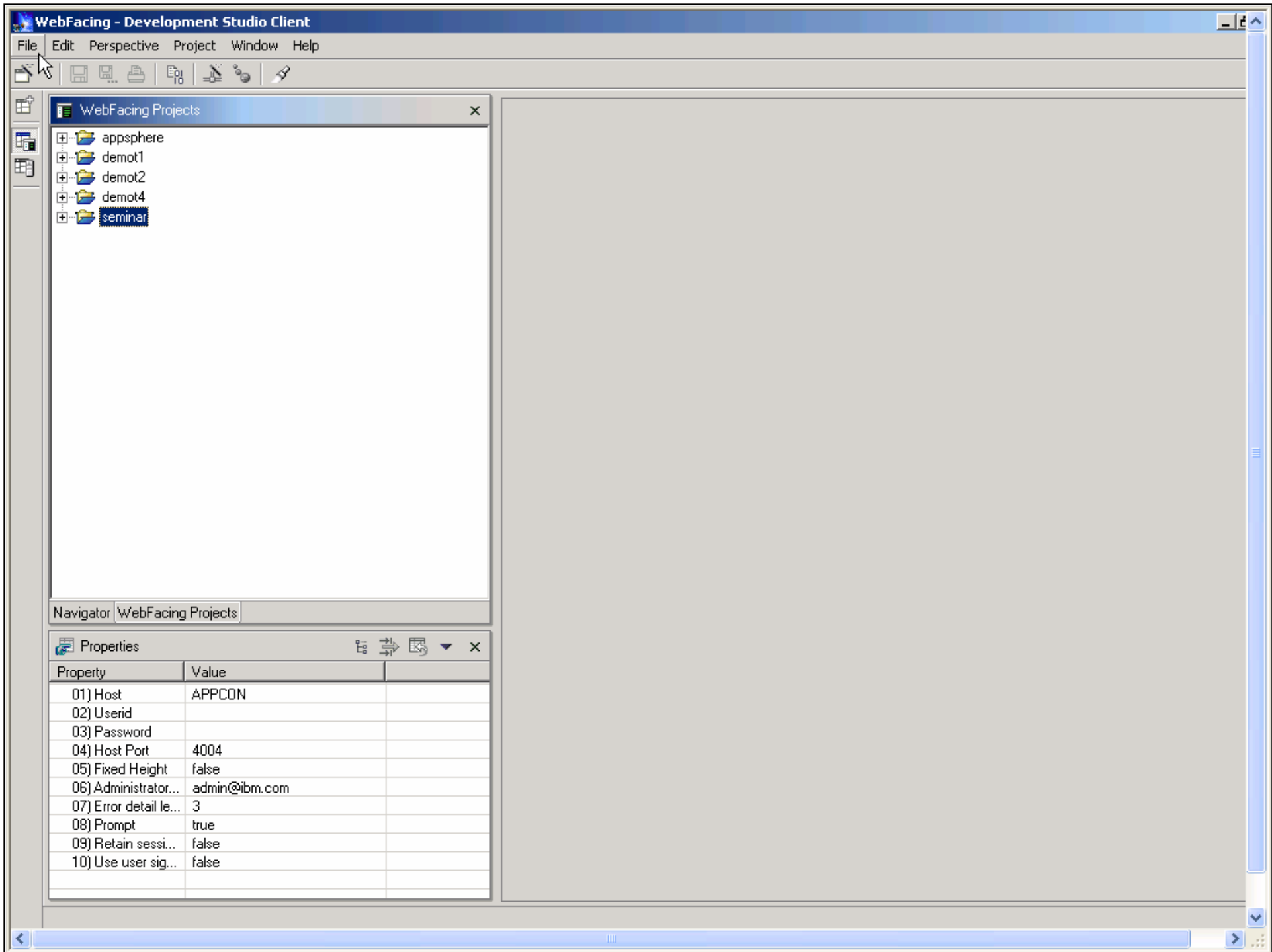
Help

vm01 [216.81.165.211]

eLearning Labs Virtual Desktop

- ◆ Windows Login
- ◆ Windows 2000 Server desktop:
 - Usual desktop icons
 - iSeries Navigator
 - 5250 Client Access Emulation Session
 - IBM WebSphere Studio Site Developer Advanced
 - Command Prompt
 - SW275 Student Exercise Guide





Summary

◆ Overview:

- Learning environment
- Lotus Learning Space Virtual Classroom
- eLearning eLabs
- Web-enabling Workshops

◆ Reusability of eLearning-Labs environment

- Training
- Mentoring
- Proof-of-concepts
- Development
- Hosting

◆ Q&A